



Stepek, Gillian and Lowe, Ann E. and Buttle, David J. and Duce, Ian R. and Behnke, Jerzy M. (2007) In vitro anthelmintic effects of cysteine proteinases from plants against intestinal helminths of rodents. *Journal of Helminthology*, 81 (4). pp. 353-360. ISSN 0022-149X

**Access from the University of Nottingham repository:**

<http://eprints.nottingham.ac.uk/29418/1/Stepek%20et%20al%202007%20JHelm%2081%2C%20353%20Hooks%20and%20tapeworms.pdf>

**Copyright and reuse:**

The Nottingham ePrints service makes this work by researchers of the University of Nottingham available open access under the following conditions.

- Copyright and all moral rights to the version of the paper presented here belong to the individual author(s) and/or other copyright owners.
- To the extent reasonable and practicable the material made available in Nottingham ePrints has been checked for eligibility before being made available.
- Copies of full items can be used for personal research or study, educational, or not-for-profit purposes without prior permission or charge provided that the authors, title and full bibliographic details are credited, a hyperlink and/or URL is given for the original metadata page and the content is not changed in any way.
- Quotations or similar reproductions must be sufficiently acknowledged.

Please see our full end user licence at:

[http://eprints.nottingham.ac.uk/end\\_user\\_agreement.pdf](http://eprints.nottingham.ac.uk/end_user_agreement.pdf)

**A note on versions:**

The version presented here may differ from the published version or from the version of record. If you wish to cite this item you are advised to consult the publisher's version. Please see the repository url above for details on accessing the published version and note that access may require a subscription.

For more information, please contact [eprints@nottingham.ac.uk](mailto:eprints@nottingham.ac.uk)

## ***In vitro* anthelmintic effects of cysteine proteinases from plants against intestinal helminths of rodents**

Gillian Stepek<sup>1†</sup>, Ann E. Lowe<sup>1</sup>, David J. Buttle<sup>2</sup>, Ian R. Duce<sup>1</sup>  
and Jerzy M. Behnke<sup>1\*</sup>

<sup>1</sup>School of Biology, University of Nottingham, NG7 2RD, UK: <sup>2</sup>Academic Unit of Molecular Medicine, University of Sheffield Medical School, S10 2RX, UK

### **Abstract**

Infections with gastrointestinal (GI) nematodes are amongst the most prevalent worldwide, especially in tropical climates. Control of these infections is primarily through treatment with anthelmintic drugs, but the rapid development of resistance to all the currently available classes of anthelmintic means that alternative treatments are urgently required. Cysteine proteinases from plants such as papaya, pineapple and fig are known to be substantially effective against three rodent GI nematodes, *Heligmosomoides polygyrus*, *Trichuris muris* and *Protospirura muricola*, both *in vitro* and *in vivo*. Here, based on *in vitro* motility assays and scanning electron microscopy, we extend these earlier reports, demonstrating the potency of this anthelmintic effect of plant cysteine proteinases against two GI helminths from different taxonomic groups – the canine hookworm, *Ancylostoma ceylanicum*, and the rodent cestode, *Rodentolepis microstoma*. In the case of hookworms, a mechanism of action targeting the surface layers of the cuticle indistinguishable from that reported earlier appears to be involved, and in the case of cestodes, the surface of the tegumental layers was also the principal location of damage. Hence, plant cysteine proteinases have a broad spectrum of activity against intestinal helminths (both nematodes and cestodes), a quality that reinforces their suitability for development as a much-needed novel treatment against GI helminths of humans and livestock.

### **Introduction**

Plant extracts have been used for centuries throughout the world, but particularly in developing countries, as traditional treatments for many illnesses, including parasitic infections (Waller *et al.*, 2001; Giday *et al.*, 2003). The introduction of synthetic chemotherapeutic drugs resulted in less interest being shown in these natural therapies until very recently, when there has been a resurgence in the interest of using natural products as treatments against many parasitic diseases, including

those caused by worms (Hammond *et al.*, 1997; Githiori *et al.*, 2003; Anthony *et al.*, 2005; Hounzangbe-Adote *et al.*, 2005). This renewed interest is largely due to the need for alternative treatments with novel mechanisms of action as a result of the rapid and widespread development of resistance to all three current classes of anthelmintics in many species of parasitic helminths, but particularly those species found throughout the gastrointestinal (GI) tract of livestock (Waller, 1986; Gill & Lacey, 1998; Geerts & Gryseels, 2000; Kaminsky, 2003).

The crude latex of papaya (*Carica papaya*) (Berger & Asenjo, 1940) and fig (*Ficus* species) (Robbins, 1930), and fruit of pineapple (*Ananas comosus*) (Berger & Asenjo, 1939) were shown to digest the cuticle of *Ascaris suum*, and hence kill the nematode, *in vitro*. However, it was not until much later that this mechanism was described in

\*Fax + 44 115 951 3251

E-mail: jerzy.behnke@nottingham.ac.uk

† Current address: Institute of Comparative Medicine, Faculty of Veterinary Medicine, University of Glasgow, G61 1QH, UK

more detail and was shown to be dependent upon the cysteine proteinases found in the latex or fruit of these plants (Stepek *et al.*, 2005, 2006, 2007a). These recent studies have employed three different rodent GI nematodes, *Heligmosomoides polygyrus* (in the small intestine), *Trichuris muris* (in the large intestine or caecum) and *Protospirura muricola* (in the stomach), and we were interested to know more about the extent of the spectrum of activity of these enzymes. To begin to answer this, we examined the *in vitro* anthelmintic effect of cysteine proteinases from papaya, pineapple, fig and kiwi fruit (*Actinidia chinensis*) against the canine hookworm, *Ancylostoma ceylanicum* (found in the small intestine of dogs and humans, but maintained in the laboratory through hamsters), and the rodent cestode, *Rodentolepis microstoma* (found attached in the bile duct in the liver, with the strobila stretching down the bile duct and into the small intestine of mice).

## Materials and methods

### Parasites

The hookworm, *A. ceylanicum*, was maintained in hamsters, as described by Garside & Behnke (1989). In hamsters, the adult worms develop from infective L3 within 17 days of infection. The hamsters were given food and water *ad libitum*, and all animal procedures were carried out in accordance with Home Office Licence number 40/2621, and under the regulations of the Animals (Scientific Procedures) Act, 1986. Infected hamsters were killed by exposure to CO<sub>2</sub>, and the entire small intestine was removed and placed in a Petri dish containing pre-heated (37°C) Hanks' balanced salt solution (HBSS), where it was opened longitudinally with a pair of blunt-ended dissecting scissors and placed at 37°C for 1–2 h. The adult male and female worms were collected separately, counted and washed in HBSS.

The tapeworm, *R. microstoma*, was maintained in BKW mice and flour beetles of the species, *Tribolium confusum*. The mice were given food and water *ad libitum*, and all animal procedures were carried out in accordance with Home Office Licence number 40/2621, and under the regulations of the Animals (Scientific Procedures) Act, 1986. The mice were killed by exposure to CO<sub>2</sub>, and the anterior small intestine, together with the bile duct and associated sections of the liver, were removed, placed in a Petri dish containing pre-heated (37°C) HBSS, and opened with a pair of blunt-ended dissecting scissors. The tissues were placed at 37°C for 1–2 h and then the adult male and female worms were collected separately, counted and washed in HBSS.

### Enzymes

The enzymes used throughout this *in vitro* study were the crude latex from papaya (*C. papaya*; Sigma, UK), the pure enzymes, papain (from the papaya plant, *C. papaya*; Merops (<http://merops.sanger.ac.uk/>) identifier C01.001; Sigma) and ficin (from the fig plant, *Ficus carica*; C01.006; Sigma), and stem bromelain (C01.005) from the stem of the pineapple plant (*A. comosus*; Hong Mao Biochemicals

Company, Thailand). Actinidain (C01.007) was retrieved by acetone precipitation of kiwi fruit (*A. chinensis*) pulp. All the enzyme preparations were standardized by active-site titration with the cysteine proteinase-specific inhibitor, E-64 (Stepek *et al.*, 2005), and all the concentrations described in the text below are for the active enzyme. Immediately prior to use, the enzymes were diluted into HBSS containing 16 mM cysteine base.

### *In vitro* assessment of anthelmintic efficacy of plant cysteine proteinases

Four adult male and female worms of *A. ceylanicum* were incubated in four-well plates (one male and one female worm per well) with the following enzyme concentrations in Hanks' saline with 16 mM L-cysteine: 25 µM papaya latex, 25 µM papain, 9 µM ficin, 22.5 µM stem bromelain and 30 µM actinidain. Four male and female control worms (one male and one female worm per well) were incubated with Hanks' saline with 16 mM L-cysteine or Hanks' saline alone. The worms were incubated at 37°C for 2 h, and their motility was recorded every 15 min using a motility scale from 0 to 5, where 0 is completely immobile and 5 is highly active (Stepek *et al.*, 2005, 2006). In a separate experiment, adult worms were incubated for 2 h with the same active enzyme concentrations as described above. Worms were removed every 30 min and immediately fixed with 2.5% glutaraldehyde in 0.15 M phosphate buffer, pH 7.2 for 1 h. These worms were then prepared for scanning electron microscopy, as described previously (Stepek *et al.*, 2005).

Experiments with mature *R. microstoma* were carried out in a similar way, except that the active enzyme concentrations used were 25 µM papaya latex, 9 µM ficin, 90 µM stem bromelain and 30 µM actinidain.

### Statistical analysis

Changes in motility were analysed by repeated measures ANOVA (general linear model (GLM)) in SPSS (version 12.0.1; SPSS Inc., Chicago, Illinois, USA) on the raw data, with time after introduction of experimental treatments as the within-subject factor, and treatment (papaya latex, Hanks' saline, etc.) as the between-subject factor. The analysis was confined to all the enzyme treatments with cysteine and to Hanks' saline + cysteine, excluding the control Hanks' saline treatment without cysteine. The data for *A. ceylanicum* (fig. 1) met the requirements of sphericity (Mauchly's test of sphericity;  $W = 0.132, P = 0.18$ ), whereas that for *R. microstoma* (fig. 2) did not and, in this case, we used the Huynh–Feldt adjustment to the degrees of freedom to interpret significance on the side of caution. Tukey's HSD test was used to determine homogeneous subsets of treatment.

## Results

### *Effects of plant cysteine proteinases on worm motility*

When *A. ceylanicum* was incubated with all the plant cysteine proteinases detailed above, with the exception of actinidain, there was a rapid decline in the motility of the

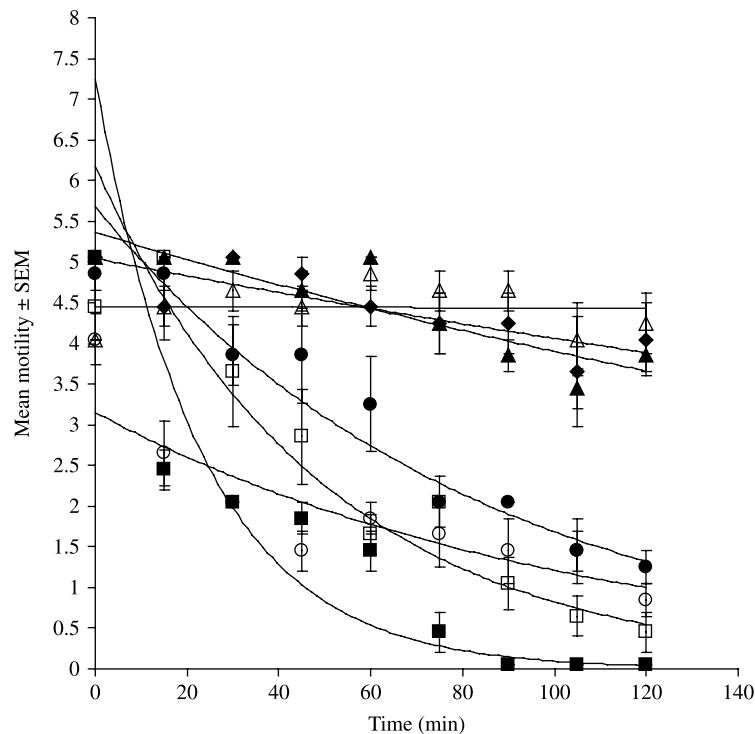


Fig. 1. The motility of *Ancylostoma ceylanicum* adult worms exposed to plant cysteine proteinases *in vitro*. Adult worms of *A. ceylanicum* were incubated with 25  $\mu$ M papaya latex, 25  $\mu$ M papain, 9  $\mu$ M ficin, 22.5  $\mu$ M stem bromelain, 30  $\mu$ M actinidain (all in Hanks' balanced salt solution containing 16 mM L-cysteine) or Hanks' saline with or without 16 mM L-cysteine (as controls). Motility declined rapidly in the presence of all cysteine proteinases examined, except actinidain, while no significant change in activity was evident for the worms incubated in Hanks' saline, with or without cysteine. ■, papaya latex; □, papain; ●, stem bromelain; ○, ficin; ▲, actinidain; △, Hanks' + cysteine; ◆, Hanks'. Error bars represent the standard error of the mean ( $n = 5$ ).

worms (from 15 to 30 min post-incubation), resulting eventually in the death of these worms (fig. 1). The motility declined with time ( $F_{8,192} = 79.9$ ,  $P < 0.001$ ), and there was a highly significant main effect of treatment ( $F_{5,24} = 87.6$ ,  $P < 0.001$ ). This effect differed between the efficacious enzymes (time  $\times$  treatment interaction:  $F_{40,120} = 8.2$ ,  $P < 0.001$ ), in that papaya latex and ficin were indistinguishable, as were papain and ficin, and stem bromelain was distinguishable from papaya latex, papain and ficin (Tukey's *post-hoc* test). These four enzymes all caused a significantly faster decline in motility than actinidain and Hanks' saline + cysteine, the latter treatments being indistinguishable from each other. In fact, the control worms, incubated either in Hanks' saline containing 16 mM cysteine or Hanks' saline alone, showed no significant decline in activity over the 2-h period of observation.

When *R. microstoma* was incubated with the plant cysteine proteinases, there was a rapid decline in the motility of the worms (from 15 to 30 min post-incubation), resulting eventually in the death of these worms (fig. 2). This motility declined with time ( $F_{8,120} = 134.1$ ,  $P < 0.001$ ) and there was a highly significant main effect of treatment ( $F_{4,15} = 375.7$ ,  $P < 0.001$ ). This effect differed between the efficacious enzymes (time  $\times$  treatment

interaction:  $F_{32,120} = 9.4$ ,  $P < 0.001$ ) in that papaya latex and ficin were indistinguishable, but differed from stem bromelain and actinidain (Tukey's *post-hoc* test). Although papaya latex and ficin were more effective than stem bromelain and actinidain, collectively all four enzymes produced a significantly different effect from that produced by both Hanks' saline + cysteine and Hanks' saline alone, the control worms in these latter treatments showing no significant decline in activity over the 2-h period of observation.

#### *Effects of plant cysteine proteinases on the worm surface at the light microscope level*

Papaya latex, papain and stem bromelain also caused damage to the cuticle of the hookworms that was evident at the light microscope level – consisting of blisters which perforated to release the internal structures, leading to the eventual death of the nematode by around 75–90 min after first exposure to the enzyme. This damage increased in intensity with time. Ficin also had this same effect against hookworms, but the damage progressed more slowly, possibly due to the lower enzyme concentration of 9  $\mu$ M instead of  $> 20$   $\mu$ M for the other enzymes. Papaya latex, stem bromelain and ficin

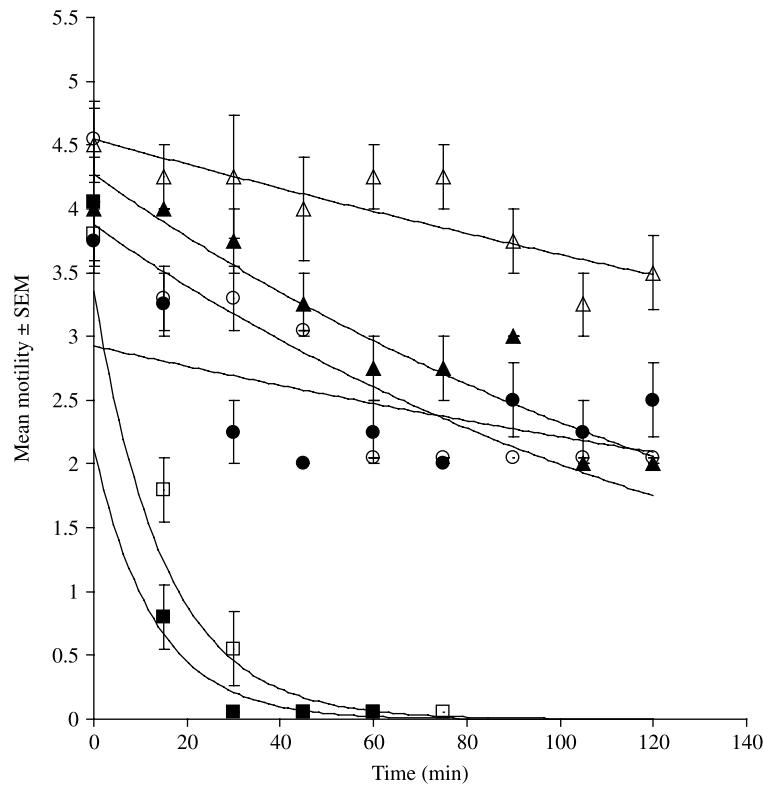


Fig. 2. The motility of *Rodentolepis microstoma* adult worms exposed to plant cysteine proteinases *in vitro*. Adult worms of *R. microstoma* were incubated with 25  $\mu\text{M}$  papaya latex, 9  $\mu\text{M}$  ficin, 90  $\mu\text{M}$  stem bromelain, 30  $\mu\text{M}$  actinidain (all in the presence of 16 mM cysteine) or Hanks' saline with or without 16 mM L-cysteine. Motility declined rapidly in the presence of all cysteine proteinases examined, while no significant change in activity was evident for the worms incubated in Hanks' saline, with or without cysteine. ■, papaya latex; □, ficin; ●, stem bromelain; ○, actinidain; ▲, Hanks' + cysteine; Δ, Hanks'. Error bars represent the standard error of the mean ( $n = 4$ ).

also produced observable surface damage to the cestodes. The edges of the proglottids became blunter and thinner, and stem bromelain produced the formation of blisters at the anterior end of the worm from 75 min onwards. As with the hookworms, this damage increased over time, leading to the eventual death of the tapeworm (results not shown).

#### *Effects of plant cysteine proteinases on the worm surface at the scanning electron microscope level*

Scanning electron microscopy was used to examine the ultrastructural surface damage caused by these enzymes. Cuticular damage to *A. ceylanicum* (fig. 3) was very similar to that described earlier for *H. polygyrus* (Steppek *et al.*, 2005), *T. muris* (Steppek *et al.*, 2006) and *P. muricola* (Steppek *et al.*, 2007a), in that it was progressive, with the initial formation of blisters, which perforated to release the internal structures of the worm, leading to complete digestion of the cuticle by 60 min in the presence of papain (fig. 3A), papaya latex (fig. 3B) or stem bromelain (fig. 3C). At the concentration used, ficin caused substantial digestion of the cuticle by 120 min (fig. 3D), and this was in accordance with the motility results,

which showed that ficin was slower to affect the activity of hookworms than the other three enzymes examined, probably as a result of the lower active enzyme concentration of ficin used in these experiments. In marked contrast, on incubation of the worms with 30  $\mu\text{M}$  actinidain (fig. 3E) and Hanks' saline + 16 mM cysteine (fig. 3F), the cuticle remained intact, with no visible damage whatsoever, even after 2 h.

Cestodes do not have a cuticle but instead possess a tegument, which is a cytoplasmic syncytium limited by a trilaminar lipid membrane, as their external surface, and scanning electron microscopy revealed that the damage caused by the plant cysteine proteinases to *R. microstoma* was qualitatively different from that observed on the nematodes, but still clearly identifiable as a major disruption of the parasite's surface. As observed by scanning electron microscopy, the strobila of the cestode comprises a chain of proglottids which, on incubation with papaya latex or stem bromelain, became smaller and erupted in blisters over the surface (fig. 4). The digestion of the tegumental surface was evident by 30 min when the worms were incubated with 25  $\mu\text{M}$  papaya latex (fig. 4A) and by 60 min when the worms were incubated with 90  $\mu\text{M}$  stem bromelain (fig. 4B). In the presence of papaya

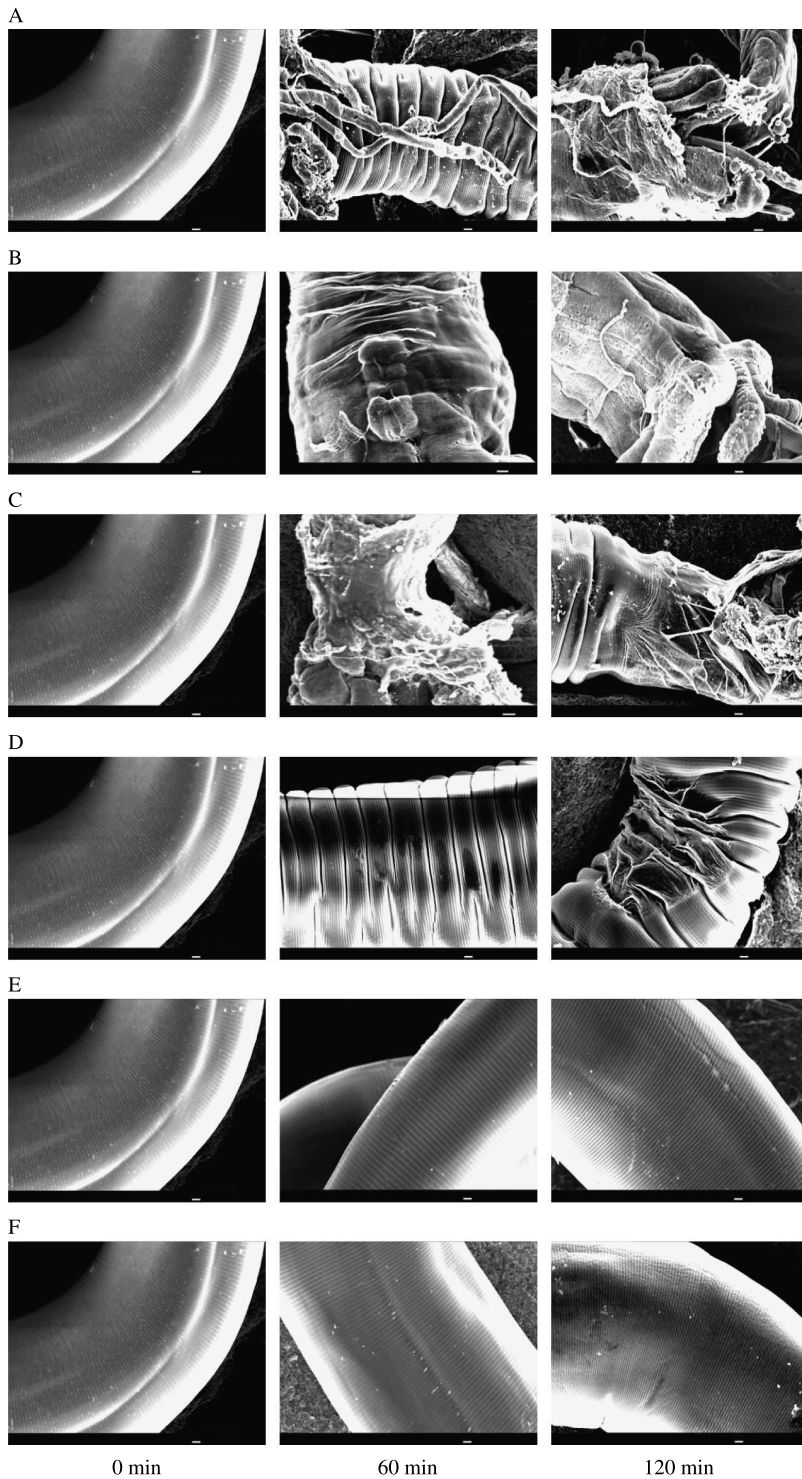


Fig. 3. Scanning electron microscopy of *Ancylostoma ceylanicum* adult worms incubated with or without plant cysteine proteinases *in vitro*. The micrographs were taken at equivalent points along the worm surface, near the mid-point. The digestion of the cuticle to expose the internal structures was evident by 60 min when the worms were incubated with 25  $\mu$ M papain (A), 25  $\mu$ M papaya latex (B) and 22.5  $\mu$ M stem bromelain (C), and by 120 min when the worms were incubated with 9  $\mu$ M ficin (D). The cuticle remained intact, with no visible damage whatsoever, even after 2 h, on incubation of the worms with 30  $\mu$ M actinidain (E) and Hanks' saline + 16 mM cysteine (F). Scale bar = 10  $\mu$ m.

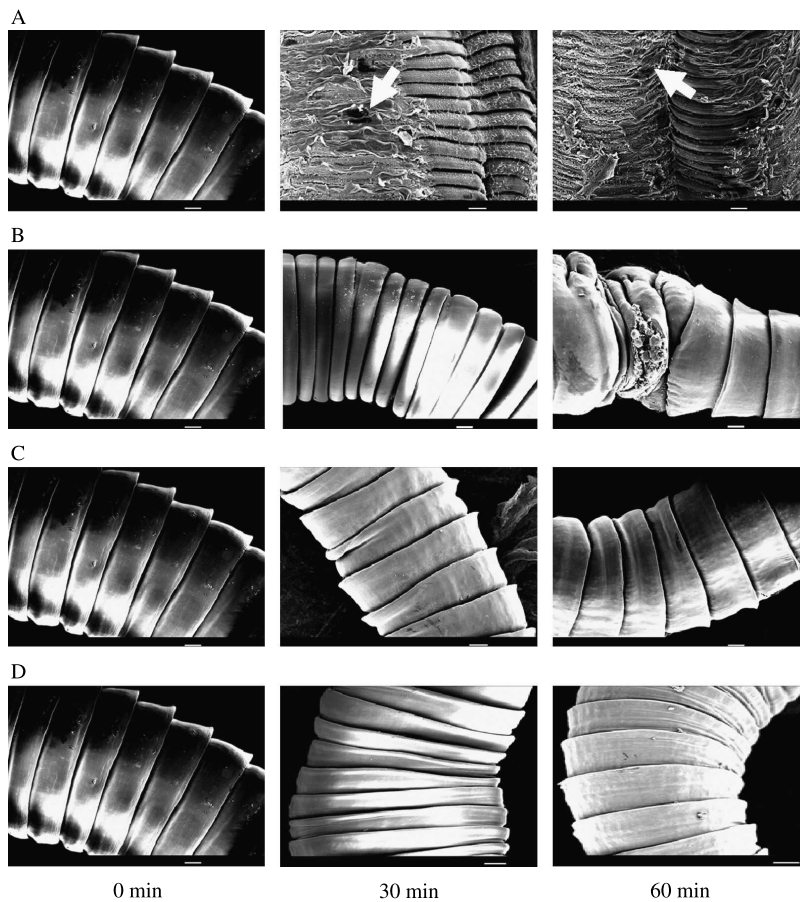


Fig. 4. Scanning electron microscopy of *Rodentolepis microstoma* adult worms incubated with or without plant cysteine proteinases *in vitro*. The micrographs were taken at equivalent points along the worm surface, near the mid-point. The digestion of the tegumental surface was evident by 30 min when the worms were incubated with 25  $\mu\text{M}$  papaya latex (A) and by 60 min when the worms were incubated with 90  $\mu\text{M}$  stem bromelain (B). Later time points (not shown) exhibited similar damage, particularly with papaya latex, as the lesions (arrows in A) seen at 30 and 60 min increased in number by 120 min. The tegument remained intact, with no visible damage, even after 2 h, on incubation with 30  $\mu\text{M}$  actinidain (C) and Hanks' saline + 16 mM cysteine (D). Scale bar = 100  $\mu\text{m}$ .

latex, lesions (arrows in fig. 4A) appeared in the surface of the tegument, developed into deep perforations, and continued increasing in intensity over the 2-h incubation period (later time points not shown). In contrast, on incubation with 30  $\mu\text{M}$  actinidain (fig. 4C) and Hanks' saline containing 16 mM cysteine (fig. 4D), the tegument remained intact, with no visible damage, even after 2 h.

### Discussion

This study showed that, *in vitro*, cysteine proteinases from papaya, pineapple and fig caused substantial damage to the surface of parasitic nematodes (*A. ceylanicum*) and cestodes (*R. microstoma*), which resulted in a significant reduction in the activity of these parasites. This effect was similar to that described previously for *A. suum* (Robbins, 1930; Berger & Asenjo, 1939), *H. polygyrus* (Stepek *et al.*, 2005), *T. muris* (Stepek *et al.*, 2006) and *P. muricola* (Stepek *et al.*, 2007a), indicating that plant cysteine proteinases

have a broad spectrum of activity against parasitic helminths *in vitro*.

It would appear that the mechanism of action of plant cysteine proteinases against nematodes and cestodes is digestion of the parasite surface, releasing the internal structures, and leading to the death of the parasite. As for *H. polygyrus*, *T. muris* and *P. muricola*, actinidain from kiwi fruit was without effect on cuticular/tegumental damage. This is a remarkable finding given the similarity in enzyme structure and activity between actinidain and the other papain-like enzymes (Varughese *et al.*, 1989, 1992) – they are virtually superimposable in the active-centre; however, there is evidence for differences in the characteristics and behaviour of their catalytic sites (Kowlessur *et al.*, 1989). It is likely that the target molecules in the cuticle that are susceptible to attack by all the proteinases tested except actinidain, although undefined, are common components of the adult cuticle of the four species of GI nematode examined and of the adult

tegument of *R. microstoma*. Despite the lack of any apparent effect on the tegumental structure, actinidain possessed some efficacy against the cestode, as shown by its effect on worm motility (fig. 2), perhaps indicating a different mechanism of action. However, in all cases, the enzymes from *C. papaya* latex, pure papain and ficin from *F. carica* latex appeared to have the greatest potency.

Therefore, it is evident that plant cysteine proteinases, with the exception of actinidain from kiwi fruit, have anthelmintic activity *in vitro* against a wide variety of GI helminths that include both nematodes and cestodes. Further analyses of the consequences of exposure to the enzymes on the cuticle and tegument are required to determine precisely the target molecules involved and to verify the selective effect of actinidain on the motility of cestodes. It is important to examine whether these natural enzymes have a detrimental effect against earlier life-cycle stages of cestodes, because earlier work has suggested that plant cysteine proteinases have no effect on the eggs of *H. polygyrus* or the structure and development of the L1 stage, or on the L3 stages of *H. polygyrus*, *T. muris* and *P. muricola* (Stepek *et al.*, unpublished). However, these enzymes do affect the L4 stage of these nematodes *in vitro*, suggesting that there may be a difference between the cuticular structure and molecules of the pre-infective stages (eggs to L3) and the post-infective stages (L4 and adult).

To our knowledge, this is the first time that the anthelmintic effect of plant cysteine proteinases has been demonstrated against adult cestodes. Further investigation is required to determine whether these plant products are also efficacious against these cestodes *in vivo*, as has been shown previously for the GI nematodes, *A. suum* (Satrija *et al.*, 1994), *H. polygyrus* (Satrija *et al.*, 1995; Stepek *et al.*, 2007b), *T. muris* (Stepek *et al.*, 2006) and *P. muricola* (Stepek *et al.*, 2007a). If this does prove to be the case, then cysteine proteinases from plants will have been shown to have a broad spectrum of activity against intestinal helminths, both *in vitro* and *in vivo*, reinforcing their suitability for development as a much-needed novel treatment for the control of GI helminths of humans and livestock.

### Acknowledgements

This work was funded by a research grant from The Leverhulme Trust. We thank Simon Clifford and Tim Smith for excellent technical assistance in parasite maintenance and electron microscopy.

### References

- Anthony, J.-P., Fyfe, L. & Smith, H. (2005) Plant active components – a resource for antiparasitic agents? *Trends in Parasitology* **21**, 462–468.
- Berger, J. & Asenjo, C.F. (1939) Anthelmintic activity of fresh pineapple juice. *Science* **90**, 299–300.
- Berger, J. & Asenjo, C.F. (1940) Anthelmintic activity of crystalline papain. *Science* **91**, 387–388.
- Garside, P. & Behnke, J.M. (1989) *Ancylostoma ceylanicum*: observations on host–parasite relationship during primary infection. *Parasitology* **98**, 283–289.
- Geerts, S. & Gryseels, B. (2000) Drug resistance in human helminths: current situation and lessons from livestock. *Clinical and Microbiological Reviews* **13**, 207–222.
- Giday, M., Asfaw, Z., Elmqvist, T. & Woldu, Z. (2003) An ethnobotanical study of medicinal plants used by the Zay people in Ethiopia. *Journal of Ethnopharmacology* **85**, 43–52.
- Gill, J.H. & Lacey, E. (1998) Avermectin/milbemycin resistance in trichostrongyloid nematodes. *International Journal of Parasitology* **28**, 863–877.
- Githiori, J.B., Höglund, J., Waller, P.J. & Baker, R.L. (2003) Evaluation of anthelmintic properties of extracts from some plants used as livestock dewormers by pastoralist and smallholder farmers in Kenya against *Heligmosomoides polygyrus* infections in mice. *Veterinary Parasitology* **118**, 215–226.
- Hammond, J.A., Fielding, D. & Bishop, S.C. (1997) Prospects for plant anthelmintics in tropical veterinary medicine. *Veterinary Research Communications* **21**, 213–228.
- Hounzangbe-Adote, S., Fouraste, I., Moutairou, K. & Hoste, H. (2005) *In vitro* effects of four tropical plants on the activity and development of the parasitic nematode, *Trichostrongylus colubriformis*. *Journal of Helminthology* **79**, 29–33.
- Kaminsky, R. (2003) Drug resistance in nematodes: a paper tiger or a real problem? *Current Opinion in Infectious Diseases* **16**, 559–564.
- Kowlessur, D., O'Driscoll, M., Topham, M., Templeton, W., Thomas, E.W. & Brocklehurst, K. (1989) The interplay of electrostatic fields and binding interactions determining catalytic-site reactivity in actinidin. *Biochemical Journal* **259**, 443–452.
- Robbins, B.H. (1930) A proteolytic enzyme in ficin, the anthelmintic principle of leche de higueron. *Journal of Biological Chemistry* **87**, 251–257.
- Satrija, F., Nansen, P., Bjorn, H., Murtini, S. & He, S. (1994) Effect of papaya latex against *Ascaris suum* in naturally infected pigs. *Journal of Helminthology* **68**, 343–346.
- Satrija, F., Nansen, P., Murtini, S. & He, S. (1995) Anthelmintic activity of papaya latex against patent *Heligmosomoides polygyrus* infections in mice. *Journal of Ethnopharmacology* **48**, 161–164.
- Stepek, G., Buttle, D.J., Duce, I.R., Lowe, A. & Behnke, J.M. (2005) Assessment of the anthelmintic effect of natural plant cysteine proteinases against the gastrointestinal nematode, *Heligmosomoides polygyrus*, *in vitro*. *Parasitology* **130**, 203–211.
- Stepek, G., Lowe, A.E., Buttle, D.J., Duce, I.R. & Behnke, J.M. (2006) *In vitro* and *in vivo* anthelmintic efficacy of plant cysteine proteinases against the rodent gastrointestinal nematode, *Trichuris muris*. *Parasitology* **132**, 681–689.
- Stepek, G., Lowe, A.E., Buttle, D.J., Duce, I.R. & Behnke, J.M. (2007a) Anthelmintic action of plant cysteine proteinases against the rodent stomach nematode, *Protospirura muricola*, *in vitro* and *in vivo*. *Parasitology* **134**, 103–112.



- Stepek, G., Lowe, A.E., Buttle, D.J., Duce, I.R. & Behnke, J.M.** (2007b) The anthelmintic efficacy of plant-derived cysteine proteinases against the rodent gastrointestinal nematode. *Heligmosomoides Polygyrus*, *in vivo*. *Parasitology* **134**, 1409–1419.
- Varughese, K.I., Ahmed, F.R., Carey, P.R., Hasnain, S., Huber, C.P. & Storer, A.C.** (1989) Crystal structure of a papain–E-64 complex. *Biochemistry* **28**, 1330–1332.
- Varughese, K.I., Su, Y., Cromwell, D., Hasnain, S. & Xuong, N.** (1992) Crystal structure of an actinidin–E-64 complex. *Biochemistry* **31**, 5172–5176.
- Waller, P.J.** (1986) Anthelmintic resistance in nematode parasites of sheep. *Agricultural Zoology Reviews* **1**, 333–373.
- Waller, P.J., Bernes, G., Thamsborg, S.M., Sukura, A., Richter, S.H., Ingebrigtsen, K. & Höglund, J.** (2001) Plants as de-worming agents of livestock in the Nordic countries: historical perspective, popular beliefs and prospects for the future. *Acta Veterinaria Scandinavica* **42**, 31–44.

(Accepted 1 February 2007)

© 2007 Cambridge University Press