

# Stroke Compendium

## *Circulation Research* Compendium on Stroke

Introduction to the Stroke Compendium  
 Global Burden of Stroke  
 Cerebral Vascular Disease and Neurovascular Injury in Ischemic Stroke  
 Stroke Risk Factors, Genetics, and Prevention  
 Stroke Caused by Extracranial Disease  
 Stroke Caused by Atherosclerosis of the Major Intracranial Arteries  
 Cardioembolic Stroke  
 Cryptogenic Stroke: Research and Practice  
 Acute Ischemic Stroke Therapy Overview  
 Heart–Brain Axis: Effects of Neurologic Injury on Cardiovascular Function  
**Vascular Cognitive Impairment**

*Marc Fisher, Costantino Iadecola, and Ralph Sacco, Editors*

## Vascular Cognitive Impairment

Martin Dichgans, Didier Leys

**Abstract:** Cerebrovascular disease typically manifests with stroke, cognitive impairment, or both. Vascular cognitive impairment refers to all forms of cognitive disorder associated with cerebrovascular disease, regardless of the specific mechanisms involved. It encompasses the full range of cognitive deficits from mild cognitive impairment to dementia. In principle, any of the multiple causes of clinical stroke can cause vascular cognitive impairment. Recent work further highlights a role of microinfarcts, microhemorrhages, strategic white matter tracts, loss of microstructural tissue integrity, and secondary neurodegeneration. Vascular brain injury results in loss of structural and functional connectivity and, hence, compromise of functional networks within the brain. Vascular cognitive impairment is common both after stroke and in stroke-free individuals presenting to dementia clinics, and vascular pathology frequently coexists with neurodegenerative pathology, resulting in mixed forms of mild cognitive impairment or dementia. Vascular dementia is now recognized as the second most common form of dementia after Alzheimer's disease, and there is increasing awareness that targeting vascular risk may help to prevent dementia, even of the Alzheimer type. Recent advances in neuroimaging, neuropathology, epidemiology, and genetics have led to a deeper understanding of how vascular disease affects cognition. These new findings provide an opportunity for the present reappraisal of vascular cognitive impairment. We further briefly address current therapeutic concepts. (*Circ Res.* 2017;120:573-591. DOI: 10.1161/CIRCRESAHA.116.308426.)

**Key Words:** cognitive impairment ■ intracranial hemorrhage ■ ischemic stroke ■ magnetic resonance imaging ■ vascular disease

As life span rises, dementia has become a growing public health issue. According to current estimates, almost 36 million people are having dementia worldwide, and this number is expected to reach 66 million by 2030 and 115 million by 2050.<sup>1</sup> In affluent countries, the prevalence of dementia after 65 years is 5% to 10%.<sup>2</sup> Vascular dementia (VaD), the second

most common cause of dementia after Alzheimer's disease (AD), accounts for at least 20% of cases.<sup>3</sup> The prevalence of both VaD and AD rises exponentially with age, with the risk of VaD doubling every 5.3 years.<sup>4,5</sup> There is a decline in incidence rates of dementia in developed countries, which has in part been related to improvements in prevention and treatment

Original received June 22, 2016; revision received July 28, 2016; accepted August 29, 2016.

From the Institute for Stroke and Dementia Research, Klinikum der Universität München, Ludwig-Maximilians-Universität LMU, Munich, Germany (M.D.); German Center for Neurodegenerative Diseases (DZNE), Munich, Germany (M.D.); Munich Cluster for Systems Neurology (SyNergy), Germany (M.D.); and University of Lille, INSERM, CHU Lille, U1171-Degenerative & Vascular Cognitive Disorders, F-59000 Lille, France (D.L.).

Correspondence to Martin Dichgans, MD, Institute for Stroke and Dementia Research, Klinikum der Universität München, Feodor-Lynen-Strasse 17, 81377 Munich, Germany. E-Mail [martin.dichgans@med.uni-muenchen.de](mailto:martin.dichgans@med.uni-muenchen.de)

© 2017 American Heart Association, Inc.

*Circulation Research* is available at <http://circres.ahajournals.org>

DOI: 10.1161/CIRCRESAHA.116.308426

Nonstandard Abbreviations and Acronyms	
<b>A<math>\beta</math></b>	amyloid-A $\beta$
<b>AD</b>	Alzheimer's disease
<b>BP</b>	blood pressure
<b>CAA</b>	cerebral amyloid angiopathy
<b>CMI</b>	cerebral microinfarcts
<b>cSS</b>	cortical superficial siderosis
<b>ePVS</b>	enlarged perivascular space
<b>ICH</b>	intracerebral hemorrhages
<b>MBs</b>	microbleeds
<b>MCI</b>	mild cognitive impairment
<b>MRI</b>	magnetic resonance imaging
<b>PSD</b>	poststroke dementia
<b>SBI</b>	silent brain infarcts
<b>SVD</b>	small-vessel disease
<b>TCI</b>	transient cognitive impairment
<b>VaD</b>	vascular dementia
<b>VCI</b>	vascular cognitive impairment
<b>WMH</b>	white matter hyperintensities
<b>WML</b>	white matter lesions

of vascular diseases.<sup>2,6</sup> Yet, the burden of dementia on patients, families, health care, and long-term care systems is growing, with costs in the United States surpassing those of cancer and heart disease.<sup>7</sup>

The prevalence of vascular cognitive impairment (VCI), which includes milder forms of cognitive impairment, is strongly age related. In subjects aged 65 to 84 years, the prevalence of mild forms of VCI not qualifying for dementia is higher than that of VaD.<sup>8</sup> Rates of conversion to dementia, institutionalization, and mortality are significantly increased in these patients, identifying patients with VCI as an important target population for prevention.<sup>3,8–11</sup>

Recent studies have highlighted the impact of subtle but widespread vascular injury and of ensuing changes in structural and functional connectivity on cognitive function. Also, it is now recognized that vascular injury induces secondary tissue loss in anatomically connected brain regions.<sup>12,13</sup> An improved understanding of the contribution of vascular diseases to cognitive decline further originates from studies combining imaging with autopsy or genetics in deeply phenotyped cohorts. Many of these data have only recently become available. We review current concepts of VCI with an emphasis on mechanisms and on aspects relevant to prevention and treatment.

### Defining VCI: Diagnostic Criteria

The concept of VCI evolved from the concept of VaD, which marks the end of a continuum of clinical manifestations. There have been various efforts to define VaD, including the criteria of the *International Classification of Disease-Tenth Revision*<sup>14</sup> and the *Diagnostic and Statistical Manual of Mental Disorders* (Fourth Edition),<sup>15</sup> the National Institute of Neurological Disorders and Stroke and the Association Internationale pour la Recherche et l'Enseignement en Neurosciences,<sup>16</sup> and the Alzheimer's Disease Diagnostic and Treatment Centers.<sup>17</sup>

These efforts in part reflect changes in the understanding and concept of VaD.<sup>18</sup> Although earlier work emphasized the role of multiple large and small infarcts (multi-infarct dementia),<sup>19</sup> it is now recognized that alterations in small blood vessels take center stage in VaD. These alterations are associated with more widespread injury throughout the brain<sup>20</sup> but most prominently involve subcortical structures. As a consequence, there have been proposals for separate diagnostic criteria for subcortical VaD.<sup>21</sup> A detailed discussion of individual classification systems, including *Diagnostic and Statistical Manual of Mental Disorders* (Fifth Edition), is beyond the scope of this review. However, available diagnostic criteria vary with regard to sensitivity and specificity and are, thus, not interchangeable.<sup>3,18,22–25</sup>

VCI is a broad concept that covers the full spectrum from vascular mild cognitive impairment (vascular MCI) to VaD and includes cases with mixed pathologies, such as mixed vascular and AD-type pathologies.<sup>3,26–28</sup> It refers to all forms of cognitive impairment associated with cerebrovascular diseases, regardless of underlying mechanism (eg, multiple or single territorial or small infarcts, strategic infarcts) and irrespective of the occurrence of stroke symptoms. The key requirements for a diagnosis of VCI are (1) demonstration of a cognitive deficit by neuropsychological testing and (2) presence of cerebrovascular disease. The diagnosis is further classified as probable or possible depending on whether there is conclusive evidence of a causal relationship between the vascular disease and the cognitive syndrome (Table 1).

The pattern of cognitive deficits in VCI is variable, and recent criteria for VCI no longer require the presence of memory impairment, a typical feature of AD.<sup>28–30</sup> Hence, neuropsychological testing should cover at least 4 different cognitive domains. A diagnosis of VaD requires deficits in at least 2 domains, whereas deficits in a single domain are sufficient to diagnose vascular MCI (Table 1). The latter can be classified into 4 subtypes: amnesic, amnesic plus other domains, non-amnesic single domain, and nonamnesic multiple domains. An abnormal test result is usually defined as  $\geq 1$  SD below the mean of a cognitively healthy control population.<sup>31</sup> Some definitions of VCI require a subjective report of a cognitive decline by the patient or an informant.

Diagnosing vascular disease of the brain is usually straightforward, and in some cases, the relationship with the cognitive syndrome is clear; this includes (1) hereditary forms of VCI, particularly when manifesting at an early age, and (ii) cases of poststroke dementia (PSD), when the patient was cognitively normal before the stroke. In many other cases, this relationship remains uncertain, that is, in patients without any clinical history of stroke or in patients who develop progressive cognitive decline months or years after stroke. Aspects that argue for a relationship include extensive (multiple or large) vascular lesions (infarcts, hemorrhages, white matter lesions [WML]), lesions in strategic brain regions, signs of cerebral amyloid angiopathy (CAA) on neuroimaging, and specific clinical features, such as a stepwise decline of cognitive functions or prominent deficits of executive functions and processing speed.<sup>26</sup> However, these aspects have not been operationalized in current diagnostic criteria.<sup>3</sup>

**Table 1. Diagnostic Criteria for Vascular Cognitive Impairment (VCI)\***

VCI refers to all forms of cognitive deficits of vascular origin ranging from MCI to dementia. Diagnosis must be based on cognitive testing involving a minimum of 4 cognitive domains, including executive/attention, memory, language, and visuospatial functions.
Vascular dementia (VaD) requires a decline in cognitive function and a deficit in performance in $\geq 2$ cognitive domains that are of sufficient severity to affect activities of daily living.
Vascular mild cognitive impairment (VaMCI) includes 4 subtypes: amnesic, amnesic plus other domains, nonamnesic single domain, and nonamnesic multiple domain; VaMCI should be based on the assumption of a decline in cognitive function. Activities of daily living may be normal or mildly impaired.
Probable: A diagnosis of probable VaD or VaMCI requires the following:
(1) Imaging evidence of cerebrovascular disease and (a) a clear temporal relationship between a vascular event (eg, stroke) and onset of cognitive deficits or (b) a clear relationship between the severity and pattern of cognitive impairment and the presence of diffuse subcortical vascular pathology;
(2) Absence of a history of gradually progressive cognitive deficits, suggesting the presence of neurodegenerative disease.
Possible: A diagnosis of possible VaD or VaMCI requires imaging evidence of cerebrovascular disease and should be made if there is no clear relationship between vascular disease and cognitive impairment, if the criteria for probable VaD or VaMCI are not fulfilled, if aphasia precludes proper cognitive assessment, or if there is a history of active cancer or psychiatric or metabolic disorders that may affect cognitive function.
Unstable VaMCI: subjects with probable or possible VaMCI whose symptoms revert to normal

MCI indicates mild cognitive impairment.

\*The key distinction between VaD and VaMCI is the degree of the functional deficit. The criteria cannot be used in subjects with delirium or an active diagnosis of substance abuse. Criteria were derived from Gorelick et al.<sup>3</sup>

### Reversibility

Occasionally, patients with VCI may return to normal cognition particularly when cognitive deficits occurred in the context of an acute stroke,<sup>32</sup> depression,<sup>33–35</sup> heart failure,<sup>36</sup> or autoimmune disorders.<sup>37</sup> VCI is reversible in  $\leq 20\%$  of patients after stroke, with the highest rate of recovery seen shortly after stroke.<sup>32</sup> Transient cognitive impairment (TCI) not necessarily returning to normal cognitive function is even more frequent and associated with a 5-fold increased risk of developing severe dementia in the next 5 years.<sup>38,39</sup> However, TCI should not be equated with delirium, one of the causes underlying TCI found in  $\leq 25\%$  of hospitalized stroke patients.<sup>40,41</sup> Both delirium and TCI are associated with worse outcomes.<sup>38,42</sup> Reversal of cognitive impairment is further seen in patients successfully treated for depression.<sup>33,43</sup>

### Mechanisms

In principle, any of the multiple etiologies of stroke (small-vessel disease [SVD], large-artery atherosclerosis, cardioembolism, or other less common etiologies of stroke) can cause VCI.<sup>44</sup> However, neuroimaging and pathological studies have identified typical settings of vascular causes and brain parenchymal lesions that are associated with cognitive impairment (Figure 1). This has provided a framework of mechanistically defined VCI categories.

### Multiple Infarcts (Multi-Infarct Dementia)

The presence of multiple small or large infarcts has for long been recognized as a cause of dementia.<sup>19</sup> Larger infarct volumes and a higher number of territorial or small subcortical infarcts are associated with worse cognitive performances and higher risks of dementia.<sup>19,45–47</sup> There is no clear threshold for an overall volume of brain lesion required for the occurrence of VCI or VaD. This relates to several factors: first, some brain regions are more eloquent with regard to cognitive functions than others. Second, many patients have comorbid conditions, such as AD.<sup>48</sup> Third, there are interindividual variations in the ability to compensate for both vascular and neurodegenerative

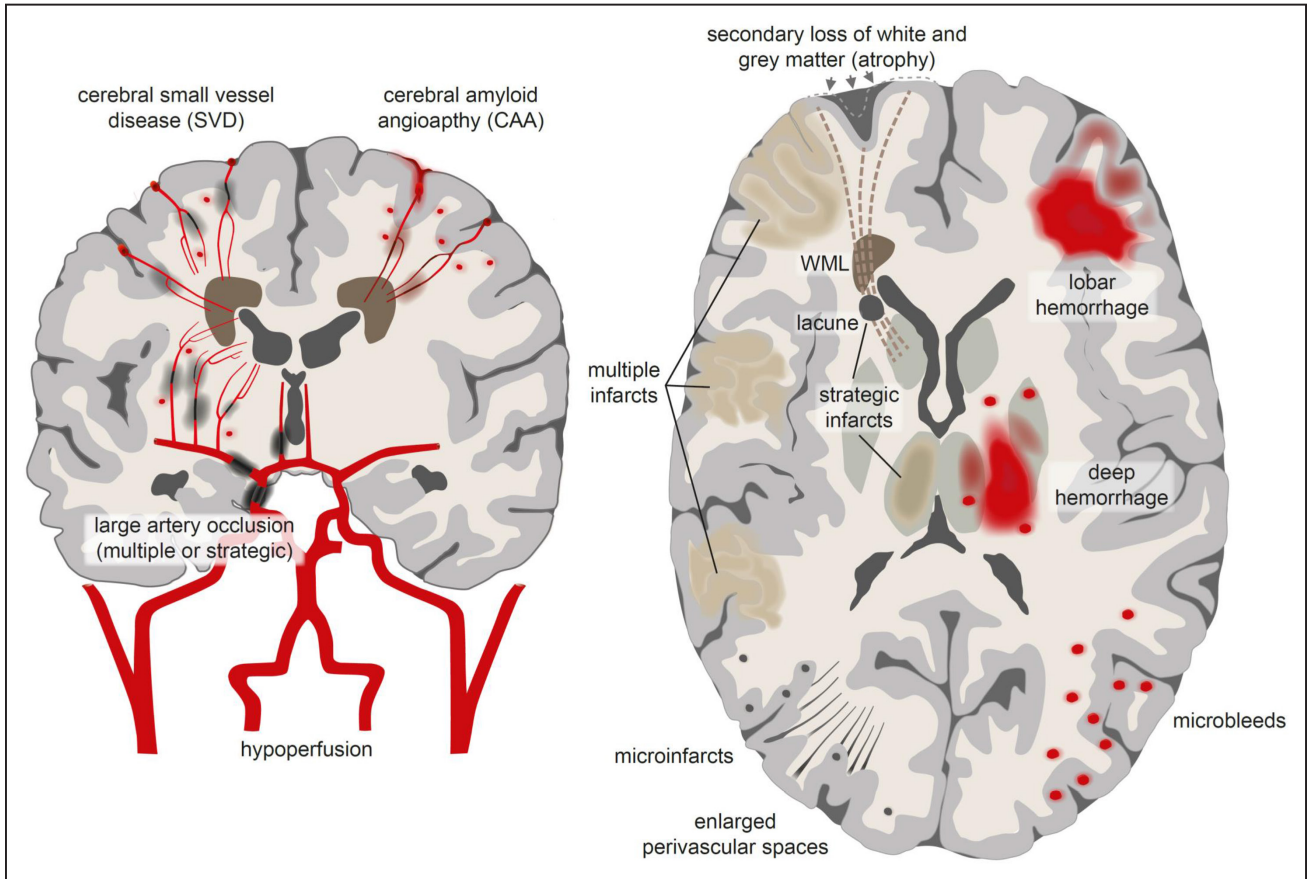
pathologies.<sup>49–51</sup> Nevertheless, multi-infarct dementia remains a valid concept.

### Strategic Infarcts (Strategic Infarct Dementia)

A single small infarct may cause severe cognitive deficits when located in a strategic brain region. Classical anatomic locations for strategic infarcts include the thalamus, angular gyrus, and basal ganglia, including the caudate nucleus and globus pallidus.<sup>52–57</sup> Voxel-based magnetic resonance imaging (MRI) studies have highlighted a key role of specific white matter tracts, in particular the anterior thalamic radiation and forceps minor in VCI.<sup>58–60</sup> This finding matches earlier reports on patients who developed dementia in the context of small infarcts in the internal capsule<sup>54,61</sup> and anterior part of the corpus callosum.<sup>53,62</sup> The available data are still insufficient to draw a complete picture of strategic brain regions and networks relevant to VCI. However, it is now recognized that most strategic locations integrate into larger networks or cortico-subcortical loops with a presumed role in cognition. It has further become clear that the same structures are also vulnerable to WML<sup>58–60</sup> and intracranial hemorrhages.<sup>53</sup>

### WML and Lacunes (Subcortical Ischemic VaD)

By far, the most common cause of VCI is cerebral SVD, which typically manifests with WML and lacunes. MRI shows hyperintense signals on T2-weighted and fluid-attenuated inversion recovery images termed white matter hyperintensities (WMH) and small cystic cavities with a signal behavior identical to cerebrospinal fluid (lacunes; Figure 2). In the general population, prevalence rates for WMH rise from 50% to 95% around 45 and 80 years of age, respectively.<sup>63,64</sup> Small brain infarcts are also common<sup>65</sup> and like WMH have been shown to be associated with cognitive deficits and dementia.<sup>65–67</sup> A correlation between the burden of subcortical ischemic lesions and lower cognitive performances has been documented both in population-based cohorts<sup>68,69</sup> and in hospital-based samples,<sup>67,70</sup> including patients with pure SVD,<sup>71</sup> with some studies suggesting a threshold effect.<sup>68,72,73</sup> However, such



**Figure 1. Major mechanisms underlying vascular cognitive impairment (VCI).** **A**, Vascular causes. **B**, Brain parenchymal lesions associated with VCI. For explanations, see text. WML indicates white matter lesion (graphical realization: Antonia Weingart, Institute for Stroke and Dementia Research).

thresholds are difficult to define given the heterogeneity of lesions and impact of location.

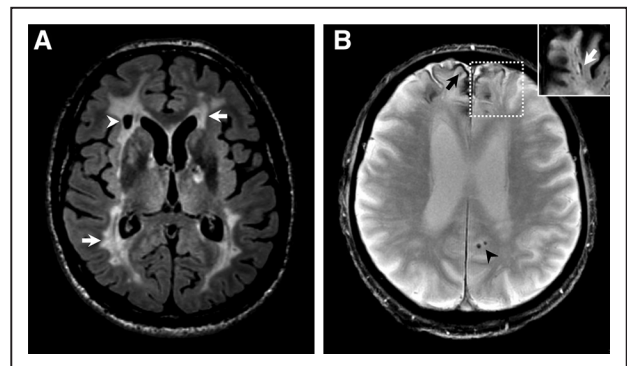
Because of the prominent appearance of WMH and lacunes on MRI, their anatomic location within white and deep gray matter, and a characteristic profile of associated clinical features, investigators have coined the terms subcortical ischemic vascular disease and subcortical ischemic VaD.<sup>20,21,74–76</sup> However, the consequences of SVD may extend into the cortex, manifesting both as microscopic vascular lesions and cortical atrophy.<sup>77–79</sup> Cortical changes are now considered a clinically relevant component of SVD.<sup>13,77,80</sup> Still, WML and lacunes represent the most prominent manifestations of SVD. Pathologically, WML represent variable degrees of axonal loss, demyelination, and gliosis. However, imaging findings should not be equated with specific pathological changes.<sup>81</sup> Also, MRI captures aspects that are usually not in the focus of pathological assessment, such as edema.<sup>82</sup>

**Brain Hemorrhages (Hemorrhagic Dementia)**

Both macroscopic intracerebral hemorrhages (ICH)<sup>83,84</sup> and microbleeds (MBs)<sup>85</sup> have been associated with cognitive decline or dementia, which may manifest before or after ICH.<sup>84,86</sup> The underlying vascular cause in deep ICH typically is hypertensive SVD,<sup>84</sup> whereas lobar ICH is associated with CAA.<sup>84</sup> These conditions will be discussed later.

**Global Hypoperfusion (Hypoperfusion Dementia)**

Global reductions in cerebral perfusion can result in transient or permanent ischemia and, hence, cognitive deficits.



**Figure 2. Magnetic resonance (MR) imaging changes associated with vascular cognitive impairment (VCI).** **A**, Fluid-attenuated inversion recovery (FLAIR) image of a 64-year-old male patient with vascular dementia (VaD) showing extensive white matter hyperintensities (white arrows) and a lacune in the right frontal white matter (white arrowhead). **B**, T2\*-weighted gradient echo scan of a 52-year-old female patient with VCI, demonstrating 2 microbleeds in the left occipital cortex (black arrowhead) as well as superficial siderosis in the frontal cortex predominantly on the right side (black arrowhead); inset: FLAIR image of the left frontal cortex displaying an enlarged perivascular space. In both cases, there is some indication of brain atrophy as reflected by a widening of sulci.

Carotid-artery occlusion or high-grade stenosis may cause cognitive impairment even in the absence of macroscopic brain lesions.<sup>87–89</sup> In the RECON trial (Randomized Evaluation of Carotid Occlusion and Neurocognition), hemodynamic failure (as defined by an increased oxygen extraction fraction measured by positron emission tomography imaging) on the side of carotid-artery occlusion was independently associated with cognitive impairment.<sup>90</sup> Studies on patients with unilateral asymptomatic severe carotid-artery stenosis have demonstrated decrements in structural brain connectivity ipsilateral to the stenosis<sup>88</sup> and an increased risk of cognitive decline.<sup>89</sup> Other causes of cognitive impairment induced by global reductions in cerebral perfusion include cardiac arrest, severe cardiac failure, arrhythmias, and severe hypotension.<sup>91–94</sup> Pathologically, global hypoperfusion has been associated with border zone infarcts, cortical laminar necrosis, and hippocampal sclerosis.<sup>95</sup>

### Mixed Vascular and AD (Mixed Dementia)

Many patients with MCI or dementia have mixed pathologies.<sup>48,49,96,97</sup> This relates to the high prevalence of both vascular and AD pathology in the elderly and to shared risk factors.<sup>11,98,99</sup> In the Religious Orders Study and the Rush Memory and Aging Project, mixed vascular and AD-type pathology was the predominant finding in patients diagnosed with dementia.<sup>48</sup> Individuals with multiple pathologies were 3× more likely to be demented than were those with 1 pathology. In most cases, it is difficult to estimate their relative contribution to cognitive decline. However, vascular brain lesions lower the threshold of AD pathology required to induce dementia.<sup>56,100–102</sup> Conversely, AD pathology increases the risk of dementia after stroke<sup>103</sup> and contributes to cognitive decline in patients with VCI.<sup>104</sup> Earlier studies have suggested a multiplicative effect between vascular and AD-type pathology on cognitive decline,<sup>56</sup> whereas recent studies indicate that the effects are additive.<sup>49,100,105</sup> Yet, the relationship may be more complex. Novel autopsy data show that both large- and small-artery disease are associated with AD dementia independent from infarcts.<sup>106</sup>

### Specific Arteriopathies

Several well-defined arteriopathies, such as hereditary and sporadic forms of CAA<sup>107–109</sup> or hereditary forms of ischemic SVD,<sup>110</sup> typically manifest with cognitive decline or dementia. The most frequent monogenic cause of VCI is cerebral autosomal dominant arteriopathy with subcortical infarcts and leukoencephalopathy, a severe SVD caused by NOTCH3 mutations.<sup>111–113</sup> Cerebral autosomal dominant arteriopathy with subcortical infarcts and leukoencephalopathy represents a pure form of VCI. As such, this condition has greatly contributed to the understanding of VCI mechanisms. Another, less common arteriopathy associated with cognitive decline and dementia is cerebral autosomal recessive arteriopathy with subcortical infarcts and leukoencephalopathy, a condition caused by HTRA1 mutations.<sup>114,115</sup>

### Silent Brain Lesions of Vascular Origin: Impact on Cognition

#### Silent Brain Infarcts

Silent brain infarcts (SBI), that is, infarcts without attributable acute neurological symptoms, are common in elderly people. Their prevalence increases from ≈10% to 40% in subjects aged 65 and 90 years, respectively, and the prevalence is even higher

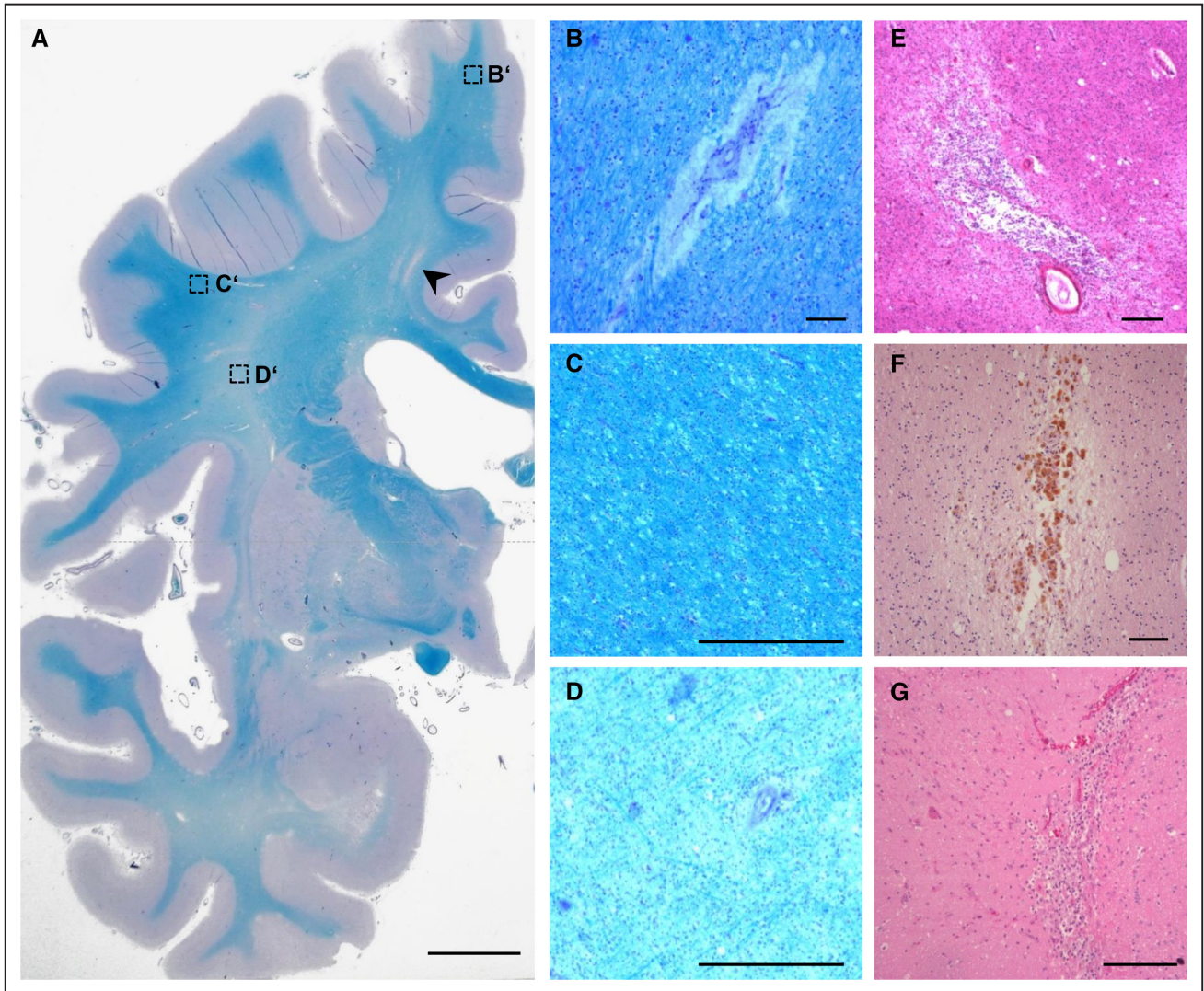
in patients with vascular risk factors.<sup>65</sup> Most SBI are lacunes attributable to SVD. In the Rotterdam scan study, the presence of SBI at baseline doubled the risk of dementia,<sup>66</sup> and similar figures were obtained in the Framingham Offspring study.<sup>116</sup> In Rotterdam, the presence of SBI was further associated with worse performance on cognitive testing and a steeper decline in cognitive function. Thalamic infarcts were associated with a decline in memory performance, whereas non-thalamic infarcts were associated with a decline in psychomotor speed.<sup>66</sup> A strategic role of silent thalamic infarcts is further suggested by an autopsy study in 72 subjects that found silent thalamic and basal ganglia lacunes to be associated with clinical dementia rating scores obtained before death. The impact of SBI on cognition might be lower in younger subjects because there was no association in the PURE study (Prospective Urban Rural Epidemiological), which included subjects aged 40 to 75 years.<sup>117</sup>

#### Microinfarcts: Invisible Lesions

Only recently, investigators have recognized the impact of cerebral microinfarcts (CMI) on cognitive function and risk of dementia. CMI are small ischemic lesions not visible to the naked eye (typically <1 mm) but detected microscopically during pathological examination, where they may be cystic or incomplete<sup>47,79</sup> (Figure 3). These lesions represent the most widespread form of brain infarction and are generally attributed to SVD, although other mechanisms, such as microemboli, cerebral hypoperfusion, or vasoconstriction, are also discussed as potential causes. The presence of 1 or 2 CMI in routine neuropathological specimens implies the presence of hundreds of CMI throughout the brain.<sup>118</sup> CMI may be located in cortical or subcortical regions and are particularly common in patients with VCI. However, they are also frequent in AD patients and in unselected elderly people.<sup>119,120</sup> CMI have been shown to be associated with an increased risk of dementia both in hospital-based studies and in prospective cohorts. In a hospital-based series of 43 autopsy cases with low or intermediate levels of neurofibrillary tangle pathology, CMI explained most of the variance in clinical dementia rating scores even when controlling for other vascular lesions.<sup>121</sup> In accord with this, a recent meta-analysis of data from the Honolulu-Asia Aging Study,<sup>122</sup> Religious Orders Study,<sup>123</sup> and other community-based studies found the prevalence of CMI to be nearly twice as high in people who died with dementia.<sup>79</sup> The profile of cognitive deficits associated with CMI has not been studied in detail, but in one study, they were found to be associated with disturbances in episodic memory, semantic memory, and perceptual speed.<sup>123</sup> Quantifying CMI in vivo remains a challenge: they are best detected on ultrahigh-field MRI at 7 T,<sup>124</sup> but may occasionally be seen on conventional 3T scans.<sup>125,126</sup> MRI is much more sensitive in detecting acute small infarcts detected on diffusion-weighted imaging, and indeed, a recent study suggests that such small diffusion-weighted imaging lesions are indicative of an annual incidence of hundreds of new CMs.<sup>127</sup>

#### Microbleeds and Superficial Siderosis

MBs are small, round, well-defined foci of MRI signal void appearing black on gradient echo T2\*-weighted scans. MBs are detected in 10% to 15% of elderly subjects<sup>128–130</sup> and in ≤80% of patients with VaD.<sup>131</sup> They are generally considered



**Figure 3. Pathological findings associated with vascular cognitive impairment (VCI).** **A**, Hemisphere section of a patient with small-vessel disease and extensive white matter rarefaction (Luxol fast blue periodic acid Schiff-reaction [LFB-PAS] stain, scale bar 1 cm); the arrowhead marks a lacunar infarct; boxes correspond to higher magnifications in **B**, **C**, and **D**. **B**, Enlarged perivascular space (LFB-PAS stain, scale bar 200  $\mu$ m). **C**, Mild white matter rarefaction (pallor; LFB-PAS stain, scale bar 500  $\mu$ m). **D**, Marked white matter rarefaction (pallor; LFB-PAS stain, scale bar 500  $\mu$ m). **E**, Lacunar infarct (hematoxylin and eosin stain, scale bar 500  $\mu$ m). **F**, Microhemorrhage with hemosiderin-loaded macrophages (hematoxylin and eosin stain, scale bar 200  $\mu$ m). **G**, Microinfarct (hematoxylin and eosin stain, scale bar 200  $\mu$ m). Images were kindly provided by Thomas Arzberger and Karl Bise, Institute for Neuropathology and Prion Research, LMU, Munich.

a manifestation of SVD.<sup>132,133</sup> They have been related to focal deposits of iron-positive blood breakdown products, although recent data suggest that the underlying pathology and mechanisms may be more heterogeneous.<sup>134</sup> A growing body of evidence suggests that MBs may affect cognition. A higher number of MBs is associated with lower cognitive scores even when adjusting for vascular risk factors and other markers of SVD.<sup>130</sup> They are also associated with an increased risk of VaD.<sup>128</sup> In patients with vascular risk factors, multiple MBs were associated with incident dementia.<sup>135</sup> An association between presence or number of MBs and cognitive function was further found in patient with transient ischemic attack or stroke,<sup>136</sup> in non-demented elderly patients with SVD,<sup>137</sup> and in patients with symptomatic SVD.<sup>138</sup> The mechanisms by which MBs affect cognition are still debated as is the impact

of MB location on cognitive impairment or dementia.<sup>128–130,135</sup> However, there is some evidence that MBs disrupt structural connectivity and, hence, network function.<sup>139–141</sup>

Cortical superficial siderosis (cSS) represents linear deposits of blood-breakdown products within the subarachnoid space, the leptomeninges, and the superficial cortical layers.<sup>142</sup> cSS is intimately connected to CAA.<sup>143</sup> The correlate on gradient echo T2\*-weighted scans is a characteristic dark (signal void) rim along the cortical surface (Figure 2). The prevalence of cSS in non-demented elderly subjects is around 0.5%,<sup>142,144</sup> whereas the frequency in patients recruited through memory clinics is much higher ranging from 2% to 6%.<sup>145–147</sup> In a study from South Korea,<sup>147</sup> cSS was similarly frequent in patients clinically diagnosed as subcortical VCI and AD-related cognitive impairment, but cSS was exclusively present in patients

who had a positive amyloid–positron emission tomography imaging scan. CSS was associated with other markers of CAA, including a strictly lobar location of MBs and the presence of an apolipoprotein E  $\epsilon$ 2 allele. cSS has further been reported to be associated with the apolipoprotein  $\epsilon$ 4 allele, which is also consistent with the known association between cSS and CAA. Whether cSS contributes to cognitive decline has to date not been studied in detail.

### Subtle Loss of Microstructural Integrity

Among the earliest manifestations of SVD is a subtle loss of microstructural tissue integrity. These early stages are not detected by conventional MRI but are captured by diffusion tensor imaging.<sup>81</sup> Measures of this technique can be quantified across the entire brain or within selected brain regions and are among the markers that correlate best with cognitive function and cognitive decline in regression models, accounting for age, WMH, lacunes, and other disease markers.<sup>148–150</sup> Moreover, the same measures enable identifying individuals at risk for developing cognitive decline even when measured within tissue appearing normal on conventional MRI.<sup>151</sup> This may allow for a completely new treatment perspective because current approaches usually fail when treatment is started in patients with advanced pathology. A valuable addition in this context has been the introduction of novel tools to quantify microstructural tissue damage across major white matter tracts in an automated way.<sup>152</sup>

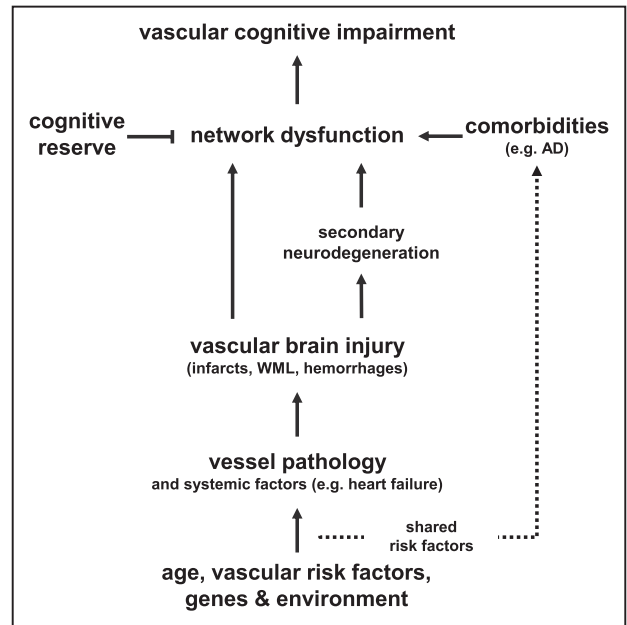
### Enlarged Perivascular Spaces: Disentangling the Influence of Different Pathologies on Cognitive Function

Enlarged perivascular spaces (ePVS) are a frequent MRI finding in elderly people, especially in subjects with vascular risk factors and in patients attending memory clinics<sup>81,153,154</sup> (Figures 1 and 2). ePVS are associated with cognitive function and dementia.<sup>155–157</sup> Typical locations include the centrum semiovale, basal ganglia, hippocampus, and mesencephalon.<sup>153</sup> ePVS are associated with markers of SVD, including WMH, lacunes, and retinal microvascular calibers.<sup>154,157–160</sup> However, they are not specific for SVD but also associated with other conditions, including AD and multiple sclerosis.<sup>153</sup> Proposed mechanisms for enlargement include brain atrophy, hypertension, inflammation, and changes in perivascular flow.<sup>153,161</sup>

Disentangling the influence of different lesions and imaging markers such as ePVS on cognitive function remains difficult because most markers are associated with other markers through shared disease processes (eg, SVD). Also, some markers, such as ePVS, may originate from multiple disease processes that may run in parallel. There are additional factors that influence the consequences of lesions on cognitive function, such as lesion location, the presence of subtle, unrecognized pathology, and cognitive reserve (Figure 4). Finally, some pathologies such as atrophy may in part originate from other pathologies (see next paragraph).

### Secondary Neurodegeneration: The Role of Brain Atrophy

Aside from causing local tissue damage, ischemic infarcts can induce neurodegenerative changes in remote brain regions.<sup>12,13,162</sup>



**Figure 4. Key determinants of vascular cognitive impairment.** For explanations, see text. AD indicates Alzheimer's disease; and WML, white matter lesion.

Secondary neurodegeneration after subcortical ischemic infarcts is mediated by a degeneration of neuronal fiber tracts connecting the initial vascular injury with distant gray matter and resulting in focal or widespread loss of white matter and cortical thinning<sup>13</sup> (Figure 1). The mechanisms underlying secondary gray matter loss are poorly understood but possibly involve trans-synaptic effects<sup>57,163</sup> and inflammatory reactions.<sup>164</sup> Another potential mechanism is retrograde degeneration of cortical neurons projecting to subcortical structures as suggested by the selective loss of pyramidal cell volumes in layers III and V of the dorsolateral prefrontal cortex in patients with PSD.<sup>165</sup> Changes of cortical morphology on MRI include a reduction of cortical thickness,<sup>13,166</sup> as well as alterations in sulcal morphology.<sup>77,80</sup> Interestingly, the spatial patterns of cortical thinning and cognitive trajectories associated with amyloid- $\beta$  ( $A\beta$ ) deposition differ from those associated with lacunes.<sup>167</sup>

Brain atrophy is among the strongest predictors of cognitive impairment in patients with pure vascular disease,<sup>80,168</sup> and a growing body of evidence suggests that the effects of subcortical ischemic lesions on cognitive functioning are mediated by the ensuing loss of cortical gray matter.<sup>169–171</sup> In the Austrian Stroke Prevention Study, associations between changes in WMH load and cognitive functioning were no longer significant when adding change in brain volume to the models.<sup>172</sup> Together, these observations identify secondary neurodegeneration as a target for future therapeutic interventions.<sup>173</sup>

### Structural and Functional Connectivity: Network Dysfunction Takes Center Stage

Cognitive functions emerge from communication between cortical and subcortical brain regions.<sup>174,175</sup> Vascular lesions may disrupt network structure and function by injuring white matter, cortical gray matter (hubs), or subcortical gray matter. Indeed, recent work suggests that the effects of vascular

lesions on cognitive function are mediated through alterations in structural and functional connectivity (Figure 4).

Structural connectivity is assessed by diffusion imaging, whereas there are several ways to measure functional connectivity, including resting state functional MRI and electroencephalography. Several MRI studies have looked at the relationship between vascular lesions, structural connectivity, and cognitive function, with most work done in patients with cerebral SVD. These studies consistently found an association between the burden of SVD-related brain lesions and reduced network efficiency.<sup>140,170,176</sup> Even more important, network efficiency was found to mediate the effects of SVD-related MRI lesions on cognitive function, and similar results were reported for patients with CAA.<sup>141</sup> Some studies have looked at regional connectivity, regional cortical thickness, and executive function. In accord with earlier observations,<sup>169,171</sup> a recent study found reductions in frontal network efficiency to mediate the effects of SVD-related lesions on frontal gray matter loss, as well as on executive dysfunction.<sup>170</sup> The clinical relevance of these observations is highlighted by the observation that lower network efficiency predicts conversion to dementia along with higher age and lower hippocampal volume.<sup>177</sup>

Functional connectivity has been less well explored. However, there is some evidence that the effects of vascular lesions on MCI are in part mediated by altering functional connectivity,<sup>178–180</sup> and this has specifically been shown for frontal brain regions.<sup>181</sup> These findings add to the growing notion that disturbances in large-scale networks take center stage in determining cognitive decline.<sup>182,183</sup>

### Poststroke Dementia

Stroke doubles the risk of dementia, with risk being highest immediately after stroke and remaining high thereafter.<sup>103,184–186</sup> In a large population-based study, incident stroke was associated with an acute decline in cognitive function and both an accelerated and persistent decline of cognitive function within the following years.<sup>187</sup>

PSD refers to all types of dementia after stroke, irrespective of its cause and onset, that is, prior to, parallel with, or after stroke.<sup>103,185,186</sup> Prevalence estimates for prestroke dementia range from 9.1% in population-based studies to 14.4% in hospital-based studies.<sup>103</sup> Estimates for the prevalence of PSD largely vary depending on the setting (eg, population-based versus hospital-based), interval from stroke, and whether patients with recurrent stroke, prestroke dementia, and aphasia are included.<sup>103</sup> In previous hospital-based studies, the pooled prevalence of PSD  $\leq 1$  year after stroke was 20%, when excluding patients with prestroke dementia. However, these patients were mostly recruited in the 90s, and more recent studies have reported lower prevalence rates possibly because of therapeutic improvements and changes in case mix.<sup>188,189</sup> The long-term incidence of dementia starting from 3 months after stroke has been estimated to be 3% to 6% per year,<sup>103,190</sup> with slightly lower rates reported for patients with transient ischemic attack and minor stroke.<sup>191</sup>

Milder deficits of cognitive function in at least 1 cognitive domain (poststroke MCI) are much more common after stroke.<sup>188,192,193</sup> A study from Helsinki found 83% of stroke

survivors to show impairment in at least 1 cognitive domain, with 50% of patients showing deficits in multiple ( $\geq 3$ ) domains when tested 3 months after stroke.<sup>192</sup> Cognitive deficits in the first days after an acute stroke may be transient<sup>32,194</sup> and, in some cases, reflect delirium.<sup>40,41</sup> TCI delirium, and poststroke cognitive impairment all are associated with poor outcome, including institutionalization and mortality.<sup>38,42,195,196</sup>

Risk factors for PSD include increasing age, female sex, prestroke cognitive decline, poststroke cognitive impairment, recurrent stroke, multiple vascular risk factors (in particular, atrial fibrillation, smoking, and diabetes mellitus), depression, early seizures, and low educational status.<sup>103,185,189–191,197,198</sup> The presence of at least 4 vascular risk factors increases the risk of dementia or death by 4-fold in elderly stroke survivors,<sup>190</sup> but the influence of vascular risk factors is probably lower than that of stroke recurrences.<sup>199</sup> Imaging predictors of PSD include WMH, SBI, and medial temporal lobe atrophy.<sup>103,189,198</sup> Interestingly, some of these factors show an even stronger association with prestroke dementia. This particularly applies to temporal lobe atrophy, which is also associated with AD. Still, several observations suggest that the cognitive deficits in PSD and poststroke MCI primarily relate to vascular pathology rather than comorbid age-related pathologies. In an autopsy study on stroke patients prospectively followed until death,  $\geq 75\%$  of demented subjects met current pathological criteria for VaD.<sup>190</sup> Also, in the to date largest study on amyloid positron emission tomography imaging and PSD, the frequency of amyloid positivity in patients who developed incident PSD was 30%, which is similar to the point estimate for healthy subjects from the same age group.<sup>198,200</sup> Of note, however, individuals with amyloid positivity exhibited a more rapid decline of cognitive scores in multiple domains compared with amyloid-negative patients when followed over 3 years.<sup>201</sup>

There are few data on the cognitive profile of PSD and poststroke MCI. Among the early and most pronounced abnormalities are deficits in attention and executive function as would be expected in patients with predominant vascular pathology. However, deficits in other domains such as orientation, memory, and language are also common, particularly in those with more severe cognitive impairment.<sup>30</sup> In light of a decline in mortality rates, long-term consequences of stroke are receiving more and more attention. As a consequence, recent secondary stroke prevention trials included cognitive end points to their study protocols.<sup>202,203</sup>

### Intracerebral Hemorrhage

Because of a lower incidence and higher case-fatality rates of ICH compared with ischemic stroke, there are less data on the relationship between ICH and cognitive decline. A substantial proportion of patients admitted for ICH have preexisting cognitive impairment or dementia. Of 417 patients with ICH who were systematically assessed for preadmission cognitive status by the Information Questionnaire on Cognitive Decline in the Elderly, 14% had cognitive impairment no dementia, and 16% had dementia.<sup>86</sup> Among those with lobar ICH, the prevalence of preexisting dementia was 23%. Factors associated with preexisting dementia in lobar ICH were higher age, lower educational level, and cortical atrophy. Factors associated with preexisting



dementia in deep ICH were old territorial vascular lesions and a higher burden of white matter changes. The majority of patients with preexisting dementia who came to autopsy had lobar ICH. All of them had AD-type and CAA pathology, whereas the single patient with deep ICH had SVD without AD-type pathology.<sup>86</sup> Hence, preexisting dementia is frequent in patients with ICH and may be the consequence of 2 distinct mechanisms: neurodegeneration with AD-type pathology and CAA in lobar ICH versus vascular processes in deep ICH.

The risk of cognitive decline after ICH remains high even years after the ICH.<sup>83,84,204,205</sup> In a cross-sectional study on 78 ICH survivors studied at a mean of 40 months after the event, 23% had developed new-onset dementia. Cognitive impairment without dementia was observed in 77% of patients undergoing detailed testing.<sup>204</sup> Cognitive deficits predominantly involved episodic memory, psychomotor speed, and executive function.<sup>204</sup>

Longitudinal data with long-term follow-up are available from the Lille ICH cohort.<sup>83,84</sup> Among 167 consecutive ICH survivors without preexisting dementia, 37% were found to decline over a median interval of 4 years.<sup>83</sup> Factors associated with cognitive decline were previous stroke or TIA, preexisting cognitive impairment, and cortical atrophy.<sup>83</sup> This suggests that the causes and mechanism underlying cognitive decline after ICH are mostly already present at the time of ICH.<sup>83</sup> In a more recent study on 218 ICH survivors free of dementia 6 months after the acute event and followed for a median interval of 6 years, 29% developed dementia.<sup>84</sup> The incidence rate of dementia was much higher in those with lobar ICH compared with those with deep ICH. Predictors of new-onset dementia were disseminated cSS, cortical atrophy, a higher number of MBs, and higher age, suggesting an important role of CAA. Collectively, these findings suggest that in many ICH patients, dementia is the consequence of a chronic disease process and that avoiding the ICH may not be enough to prevent dementia.<sup>84</sup>

### Cerebral Amyloid Angiopathies

CAA refers to a heterogeneous group of biochemically and genetically distinct conditions that are characterized by amyloid deposition in the walls of leptomeningeal and cortical arteries, arterioles, and less frequently capillaries and veins. By far, the most common form is sporadic CAA with vascular deposition of A $\beta$ .

#### Sporadic A $\beta$ -Related CAA

A $\beta$ -related sporadic CAA is found in normal elderly subjects, in patients with AD, and in Down's syndrome.<sup>206</sup> Estimates for moderate to severe CAA range from  $\approx$ 2% in those aged 65 to 74 years to  $>$ 20% in those aged  $>$ 85 years.<sup>207–209</sup> In patients with concomitant AD, the prevalence of CAA at autopsy is  $>$ 80%.<sup>209,210</sup> In the population-based Honolulu-Asia Aging Study, 44.1% of patients had autopsy-proven CAA in at least 1 neocortical area. CAA was associated with more neurofibrillary tangles, more neuritic plaques, and greater probability to have at least 1 apolipoprotein E  $\epsilon$ 4 allele,<sup>211</sup> reflecting the known overlap with AD.

A $\beta$ -CAA typically manifests with lobar ICH, cognitive impairment, or both.<sup>108,212</sup> Advanced CAA has been shown

to be associated with worse cognitive performance independent of AD pathology in several autopsy studies.<sup>211</sup> In the largest study to date, CAA was associated with an increased rate of decline in global cognition, perceptual speed, episodic memory, and semantic memory.<sup>213</sup> The mechanism by which CAA causes cognitive decline are insufficiently understood but likely include ischemic injury to the white matter,<sup>214</sup> micro- and macrobleeds, and microinfarcts and an ensuing loss of functional and structural network integrity.<sup>141</sup>

A $\beta$ -CAA is usually diagnosed on the basis of clinical and radiological findings. Radiological findings supporting the diagnosis of CAA include multiple lobar hemorrhages,<sup>215</sup> multiple MBs, particularly in the temporal and occipital lobes,<sup>216</sup> and cSS.<sup>142,143</sup> The diagnostic utility of amyloid positron emission tomography imaging<sup>217,218</sup> and measurements of A $\beta$  levels in cerebrospinal fluid<sup>219</sup> seems to be rather limited. This in part relates to limited specificity in distinguishing between CAA and AD.

#### Hereditary Forms

There are several hereditary forms of CAA, which are characterized by specific mutations and an accumulation of specific proteins in cerebral blood vessels (reviewed in Biffi and Greenberg<sup>209</sup>). Clinical presentations differ between conditions but most of them cause dementia. Among the most thoroughly studied conditions is hereditary cerebral hemorrhage with amyloidosis, Dutch type, which is caused by a point mutation in the amyloid precursor protein gene.<sup>220</sup> Dementia is common and has been shown to develop independent of plaques and neurofibrillary tangles.<sup>107</sup> Hence, this condition provides further proof that CAA alone is sufficient to cause dementia.

### Diagnostic Evaluation

#### Overview on Cognitive Domains to be Assessed in VCI

Typical reasons for patient referral include complaint by the patient, a related party, or health professionals. Although extensive neuropsychological assessment by a trained investigator may be optimal, a shorter bedside evaluation with a screening instrument is often more appropriate. Screening tests should cover the following cognitive domains<sup>24</sup>: (1) attention and processing speed; (2) frontal-executive function; (3) learning and memory; (4) language; (5) visuo-construction-perceptual ability; (6) praxis-gnosis-body schema; and (7) social cognition.

Executive function includes various processes necessary for an effective and appropriate behavior, such as initiation, planning, hypothesis generation, cognitive flexibility, decision making, regulation, judgment, feedback utilization, and self-perception.<sup>221</sup> Various aspects of executive functions are assessed in the Montreal Cognitive Assessment battery using tasks adapted from the Trail Making B task, a phonemic fluency task, and a 2-item verbal abstraction task. Verbal memory includes both immediate recall (a measure of attention) and delayed recall. Although delayed recall of logical content is most closely linked to amnesic MCI and AD, delayed recall of word lists and visual content is most closely linked

to vascular brain injury.<sup>222</sup> Care should be taken to standardization and the availability of normative data when choosing specific test batteries.

### Screening Instruments

The Mini-Mental State Examination<sup>223</sup> is the most widely used screening test. However, it was designed for AD and has a strong emphasis on language and memory and not on executive dysfunction, a hallmark of VCI. The Montreal Cognitive Assessment includes an evaluation of executive functions and has, thus, been recommended for use in VCI either in full length<sup>224</sup> or (less optimal) in an abbreviated version. It is sensitive to the cognitive profile of stroke patients, easy to administer, and available in multiple languages.<sup>224,225</sup> The Telephone Interview for Cognitive Status has been validated both in the general population and in patients with stroke with good sensitivity and specificity and with better performance in detecting multiple-domain versus single-domain MCI.<sup>226,227</sup> However, telephone interviews are limited by inability to test visuo-executive items.

### Neuropsychological Assessment

The National Institute of Neurological disorders and Stroke—Canadian Stroke Network Vascular Cognitive Impairment Harmonized battery was developed by a consensus process among experts and is undergoing validation in several languages.<sup>28</sup> This battery aims at maximizing information obtained from relatively few tests with well-validated tasks. It is organized such that multiple measures can be derived from a single and simple test, where one brief test provides insight into different domains. The battery consists of 3 sets of tests that can be applied in 60, 30, or 5 minutes.<sup>28</sup> However, there are alternative test batteries. Key issues include the need to administer a broad range of cognitive tests that capture different aspects of cognitive function and that are normed for language/ethnicity, age, education, and setting.

Given the high frequency of preexisting dementia or cognitive deficits in patients with stroke, there is broad interest in determining premorbid cognitive status. The most widely used scales for this purpose are the Informant Questionnaire for Cognitive Decline in the Elderly<sup>228</sup> and the AD8 Screening Interview,<sup>229</sup> which should be completed by a related party. Cognitive symptoms must be separated from depression.<sup>34</sup> And again, the choice of assessment tools should depend on the setting and severity of cognitive impairment. Widely used tests for depression include the Hamilton Depression Rating Scale<sup>230</sup> and the Center for Epidemiological Studies Depression Scale.<sup>231</sup> The Geriatric Depression Scale<sup>232</sup> is also widely used but contains questions about cognition, which must be considered when interpreting the results. The Cornell Scale for Depression in Dementia<sup>233</sup> shows poor sensitivity to changes over time. The Dementia Mood Assessment Scale has high sensitivity, but relies on the rating of the interviewer.<sup>234</sup>

### Risk Factors

A detailed discussion of risk factors for VCI, which are partly covered in previous sections and below, is beyond the scope of this review. Risk factors broadly overlap with those for stroke. The interested reader is referred to recent topical reviews<sup>3,11</sup> and to references provided in Table 2.

### Prevention

Preventive interventions may have a modest effect at the individual level, but lead to a major reduction in the burden of VCI at the population level. Interventions include lifestyle modifications, the control of vascular risk factors, treatment of concomitant vascular disease, and established strategies for stroke prevention.<sup>3</sup>

### Lifestyle Factors

A lower education level is associated with an increased risk of dementia of any cause (vascular, degenerative, or mixed). However, there is no evidence for a protective influence of education, cognitive training, and any other structured cognitive intervention on the occurrence of vascular or degenerative brain lesions. Available data suggest that education attenuates the impact of brain pathology on clinical expression rather than influencing the occurrence or progression of brain pathology.<sup>11,50</sup> Whether smoking cessation reduces the risk of cognitive decline remains uncertain. However, former smokers show a reduced risk of cognitive decline when compared with current smokers.<sup>11,237</sup>

The most convincing evidence for an influence of diet on VCI risk comes from studies on vitamin E, acting as an antioxidant, fish, n-3 fatty acids, polyunsaturated fats, B12 vitamin, and folates, that is, components found in Mediterranean diet.<sup>249</sup> Several prospective observational studies have shown that adherence to such a diet is associated with a lower risk of AD and cognitive decline. However, there are few specific data for VCI.<sup>11</sup>

Physical activity has beneficial effects on synaptogenesis, neurogenesis, and vascular health and might, therefore, reduce the risk of cognitive impairment. Indeed, observational studies suggest a beneficial influence on risk of cognitive decline, VaD, AD, and dementia in general.<sup>11</sup> A beneficial effect of physical activity on cognitive function is further suggested by randomized trials in patients at risk for AD<sup>250</sup> and by multi-component interventions that included physical activity.<sup>239</sup>

Overweight and obesity are important risk factors for cognitive decline and dementia in general. However, disentangling the specific influence of obesity from the influence of insulin resistance and other components of the metabolic syndrome on cognitive decline is difficult. Also, there is no interventional study that examined the effect of weight reduction on the risk of cognitive decline.<sup>11</sup>

### Vascular Risk Factors and Concomitant Vascular Disease

The efficacy of blood pressure (BP) lowering to prevent cognitive impairment in the elderly beyond stroke prevention is still controversial.<sup>3</sup> This in part relates to methodological limitations shared by BP-lowering trials.<sup>11</sup> However, in light of the documented benefit of BP-lowering therapy on vascular outcomes, it is recommended to treat hypertension in people at risk for VCI.<sup>3</sup>

The level of evidence that treating diabetes mellitus and hyperglycemia reduces the risk of VCI and dementia in general is likewise low,<sup>11,251,252</sup> but the benefit on multiple target organs (heart, eye, and kidney) is important enough to recommend strict glycemic control. Also, glycemic control has been shown to restore deficits in cerebral perfusion in diabetic

**Table 2. Risk Factors for VCI**

Risk Factors	Strength of Evidence*	References
<b>Nonmodifiable</b>		
Age	Strong	Pendlebury and Rothwell <sup>103</sup> , Leys et al <sup>185</sup> , Allan et al <sup>190</sup> , Narasimhalu et al <sup>191</sup> , Yang et al <sup>198</sup> , Kalaria et al <sup>235</sup>
Female sex	Some evidence for PSD	Pendlebury and Rothwell <sup>103</sup>
Genetic factors	Weak (few specific risk genes known)	Haffner et al <sup>110</sup> , Schrijvers et al <sup>236</sup>
<b>Modifiable</b>		
Education	Some evidence	Dichgans and Zietemann <sup>11</sup> , Zieren et al <sup>50</sup> , Kalaria et al <sup>235</sup>
Smoking	Some evidence	Dichgans and Zietemann <sup>11</sup> , Anstey et al <sup>237</sup> , Rusanen et al <sup>238</sup>
Physical activity	Some evidence	Ngandu et al <sup>239</sup> , Aarsland et al <sup>240</sup>
Obesity and body mass index	Some evidence	Gorelick et al <sup>3</sup> , Dichgans and Zietemann <sup>11</sup> , Anstey et al <sup>241</sup>
Hypertension	Strong for hypertension in midlife	Dichgans and Zietemann <sup>11</sup> , Skoog et al <sup>242</sup> , Kivipelto et al <sup>243</sup> , Iadecola et al <sup>244</sup>
Chronic hyperglycemia, diabetes mellitus	Strong	Gorelick et al <sup>3</sup> , Dichgans and Zietemann <sup>11</sup> , Yang et al <sup>198</sup> , Cosentino et al <sup>245</sup> , Panza et al <sup>246</sup> , Zietemann et al <sup>247</sup>
Lipids, dyslipidemia	Some evidence for total cholesterol levels in midlife	Gorelick et al <sup>3</sup> , Dichgans and Zietemann <sup>11</sup> , Solomon et al <sup>248</sup>

PSD indicates poststroke dementia; VaD, vascular dementia; and VCI, vascular cognitive impairment.

\*In some cases, the relationship has been established for VaD but not for VCI in general.

patients.<sup>245</sup> From the 2 statin trials that evaluated cognition as a secondary end point, there is no evidence that statin treatment reduces the risk of cognitive decline or incident dementia. However, these studies were not powered to answer the question, and follow-up may have been too short.<sup>253,254</sup>

Based on observational data, prevention of concomitant vascular disease in particular coronary artery disease, chronic heart failure, or chronic kidney disease is a reasonable strategy to prevent VCI.<sup>3</sup> Yet, there are few data from randomized controlled trials to support this.

### Cerebrovascular Disease

Few trials on primary or secondary stroke prevention provided cognitive end points. The SPS3 trial (Secondary Prevention of Small Subcortical Strokes) had a 2-by-2 factorial design and compared the effect of dual antiplatelet treatment versus single aspirin and intensive BP lowering versus usual targets in patients with small subcortical infarcts. There was no significant treatment effect on cognitive end points with either dual antiplatelet therapy or intensive BP lowering.<sup>203</sup> The PRoFESS trial (Prevention Regimen for Effectively Avoiding Second Strokes), which included patients with ischemic stroke, found no benefit of 25 mg of aspirin plus 200 mg of extended-release dipyridamole twice daily for risk of cognitive decline or dementia compared with 75 mg of clopidogrel once a day.<sup>202</sup> However, follow-up in these trials may have been too short for an effect on cognition. In the PROGRESS trial (Perindopril Protection Against Recurrent Stroke Study), treatment with 4 mg of perindopril daily showed a reduction in the risk of dementia in the subgroup of patients with a prior history of stroke when compared with placebo.<sup>255</sup> Active treatment further stopped or delayed the progression of WMH.<sup>256</sup>

Whether patients with SBI or extensive WMH but without a history of stroke benefit from antiplatelet or BP-lowering therapy is currently unknown, and current guidelines and

expert statements provide no recommendations on how to treat these patients.<sup>3</sup>

### Multicomponent Interventions

Multicomponent interventions take a comprehensive approach by targeting multiple risk factors and domains in parallel. The ASPIS trial (Austrian Polyintervention Study to Prevent Cognitive Decline After Ischemic Stroke)<sup>257</sup> found no benefit of a multicomponent intervention that focused on lifestyle and vascular risk factors, compared with standard care in patients with stroke. However, sample size was small and follow-up was only 2 years. The FINGER trial (Finnish Geriatric Intervention Study to Prevent Cognitive Impairment and Disability)<sup>239</sup> recruited 1260 at-risk individuals aged 60 to 77 years, randomly assigned to either a 2-year course of multidomain intervention (nutritional advice, exercise, cognitive training, and vascular risk monitoring) or general health advice. Subjects randomized to the multidomain intervention had better cognitive outcomes than controls. Additional trials are currently ongoing.

### Treatment

General management principles for VCI are those of MCI and dementia and include the treatment of comorbidities, including psychological and behavioral symptoms, providing information and support to the patient and caregivers and maximizing independence.<sup>3,18</sup> The observed modest effect of symptomatic treatment in patients with AD together with preclinical results and pathological evidence for a cholinergic deficit in VCI<sup>258</sup> has prompted randomized controlled trials with choline esterase inhibitors and memantine in patients with VaD. Two trials with galantamine showed no significant treatment benefit for clinician's global impression of change, activities of daily living, and neuropsychiatric symptoms.<sup>259,260</sup> However, there was a significant benefit for cognition in one of the trials.<sup>260</sup> Among the 3 trials conducted with donepezil, all found a significant

benefit for cognition,<sup>261–263</sup> while only 1 showed a significant global benefit,<sup>262</sup> and only 1 showed a benefit for activities of daily living.<sup>261</sup> Donepezil was further tested in 168 patients with cerebral autosomal dominant arteriopathy with subcortical infarcts and leukoencephalopathy, who had cognitive impairment, and found to have no effect on the primary cognitive end point. However, improvements were noted on several measures of executive function.<sup>264</sup> In the single trial of rivastigmine, there was a significant benefit on the cognition without significant global benefit or benefit on activities of daily living.<sup>265</sup> And the same was seen in 2 studies with the *N*-methyl *D*-aspartate antagonist memantine. Despite the small effect on cognition, some experts recommend considering donepezil for cognitive enhancement in patients with VaD.<sup>3</sup>

### Conclusion

Recent work has led to a substantially improved understanding on how vascular brain injury affects cognition. However, more work is required to disentangle the effects of vascular factors and neurodegenerative disease. Preventing vascular injury remains a promising approach to reduce the global burden of dementia, but additional efforts are needed to define the optimal strategy for prevention and develop efficient symptomatic treatments.

### Sources of Funding

This study was funded by the Vascular Dementia Research Foundation, EU Horizon 2020 programme grant agreements No 666881 (SVDs@target) and No 667375 (CoSTREAM), Fondation Leducq (Transatlantic Network of Excellence on the Pathogenesis of Small Vessel Disease of the Brain); Corona Foundation; and DFG EXC1010 SyNergy, CRC 1123 (B3), and DI722/13-1.

### Disclosures

None.

### References

- Wortmann M. Dementia: a global health priority - highlights from an ADI and World Health Organization report. *Alzheimers Res Ther*. 2012;4:40. doi: 10.1186/alzrt143.
- Wu YT, Fratiglioni L, Matthews FE, Lobo A, Breteler MM, Skoog I, Brayne C. Dementia in western Europe: epidemiological evidence and implications for policy making. *Lancet Neurol*. 2016;15:116–124. doi: 10.1016/S1474-4422(15)00092-7.
- Gorelick PB, Scuteri L, Black SE, et al; American Heart Association Stroke Council, Council on Epidemiology and Prevention, Council on Cardiovascular Nursing, Council on Cardiovascular Radiology and Intervention, and Council on Cardiovascular Surgery and Anesthesia. Vascular contributions to cognitive impairment and dementia: a statement for healthcare professionals from the American Heart Association/American Stroke Association. *Stroke*. 2011;42:2672–2713. doi: 10.1161/STR.0b013e3182299496.
- Lobo A, Launer LJ, Fratiglioni L, Andersen K, Di Carlo A, Breteler MM, Copeland JR, Dartigues JF, Jagger C, Martinez-Lage J, Soininen H, Hofman A. Prevalence of dementia and major subtypes in Europe: A collaborative study of population-based cohorts. Neurologic Diseases in the Elderly Research Group. *Neurology*. 2000;54:S4–S9.
- Ganguli M. Epidemiology of dementia. chap 38. Abou-Saleh, MT Katona, C, Kumar, A. eds. *Principles and Practice of Geriatric Psychiatry*. 3rd ed. Hoboken, NJ: Wiley; 2011.
- Satizabal CL, Beiser AS, Chouraki V, Chêne G, Dufouil C, Seshadri S. Incidence of dementia over three decades in the Framingham Heart Study. *N Engl J Med*. 2016;374:523–532. doi: 10.1056/NEJMoa1504327.
- Yang Z, Lin PJ, Levey A. Monetary costs of dementia in the United States. *N Engl J Med*. 2013;369:489. doi: 10.1056/NEJMc1305541#SA1.
- Rockwood K, Wentzel C, Hachinski V, Hogan DB, MacKnight C, McDowell I. Prevalence and outcomes of vascular cognitive impairment. Vascular Cognitive Impairment Investigators of the Canadian Study of Health and Aging. *Neurology*. 2000;54:447–451.
- Hachinski V. Preventable senility: a call for action against the vascular dementias. *Lancet*. 1992;340:645–648.
- Moorhouse P, Rockwood K. Vascular cognitive impairment: current concepts and clinical developments. *Lancet Neurol*. 2008;7:246–255. doi: 10.1016/S1474-4422(08)70040-1.
- Dichgans M, Zietemann V. Prevention of vascular cognitive impairment. *Stroke*. 2012;43:3137–3146. doi: 10.1161/STROKEAHA.112.651778.
- Duering M, Righart R, Csanadi E, Jouvent E, Hervé D, Chabriat H, Dichgans M. Incident subcortical infarcts induce focal thinning in connected cortical regions. *Neurology*. 2012;79:2025–2028. doi: 10.1212/WNL.0b013e3182749f39.
- Duering M, Righart R, Wollenweber FA, Zietemann V, Gesierich B, Dichgans M. Acute infarcts cause focal thinning in remote cortex via degeneration of connecting fiber tracts. *Neurology*. 2015;84:1685–1692. doi: 10.1212/WNL.0000000000001502.
- World Health Organization. *The ICD-10 Classification of Mental and Behavioral Disorders: Diagnostic Criteria for Research*. Geneva, Switzerland: World Health Organization; 1993.
- American Psychiatric Association. *DSM-IV: Diagnostic and Statistical Manual of Mental Disorders*. 4th ed. Washington, DC: American Psychiatric Association; 1994.
- Román GC, Tatemichi TK, Erkinjuntti T, Cummings JL, Masdeu JC, García JH, Amaducci L, Orgogozo JM, Brun A, Hofman A. Vascular dementia: diagnostic criteria for research studies. Report of the NINDS-AIREN International Workshop. *Neurology*. 1993;43:250–260.
- Chui HC, Victoroff JJ, Margolin D, Jagust W, Shankle R, Katzman R. Criteria for the diagnosis of ischemic vascular dementia proposed by the State of California Alzheimer's Disease Diagnostic and Treatment Centers. *Neurology*. 1992;42:473–480.
- O'Brien JT, Thomas A. Vascular dementia. *Lancet*. 2015;386:1698–1706. doi: 10.1016/S0140-6736(15)00463-8.
- Hachinski VC, Lassen NA, Marshall J. Multi-infarct dementia. A cause of mental deterioration in the elderly. *Lancet*. 1974;2:207–210.
- Román GC, Erkinjuntti T, Wallin A, Pantoni L, Chui HC. Subcortical ischemic vascular dementia. *Lancet Neurol*. 2002;1:426–436.
- Erkinjuntti T, Inzitari D, Pantoni L, Wallin A, Scheltens P, Rockwood K, Roman GC, Chui H, Desmond DW. Research criteria for subcortical vascular dementia in clinical trials. *J Neural Transm Suppl*. 2000;59:23–30.
- Gold G, Bouras C, Canuto A, Bergallo MF, Herrmann FR, Hof PR, Mayor PA, Michel JP, Giannakopoulos P. Clinicopathological validation study of four sets of clinical criteria for vascular dementia. *Am J Psychiatry*. 2002;159:82–87. doi: 10.1176/appi.ajp.159.1.82.
- Lopez OL, Larumbe MR, Becker JT, Rezek D, Rosen J, Klunk W, DeKosky ST. Reliability of NINDS-AIREN clinical criteria for the diagnosis of vascular dementia. *Neurology*. 1994;44:1240–1245.
- Sachdev P, Kalaria R, O'Brien J, et al; International Society for Vascular Behavioral and Cognitive Disorders. Diagnostic criteria for vascular cognitive disorders: a VASCOG statement. *Alzheimer Dis Assoc Disord*. 2014;28:206–218. doi: 10.1097/WAD.0000000000000034.
- Erkinjuntti T, Ostbye T, Steenhuys R, Hachinski V. The effect of different diagnostic criteria on the prevalence of dementia. *N Engl J Med*. 1997;337:1667–1674. doi: 10.1056/NEJM199712043372306.
- O'Brien JT, Erkinjuntti T, Reisberg B, Roman G, Sawada T, Pantoni L, Bowler JV, Ballard C, DeCarli C, Gorelick PB, Rockwood K, Burns A, Gauthier S, DeKosky ST. Vascular cognitive impairment. *Lancet Neurol*. 2003;2:89–98.
- Skrobot OA, Attems J, Esiri M, Hortobágyi T, Ironside JW, Kalaria RN, King A, Lammie GA, Mann D, Neal J, Ben-Shlomo Y, Kehoe PG, Love S. Vascular cognitive impairment neuropathology guidelines (VCING): the contribution of cerebrovascular pathology to cognitive impairment. *Brain*. 2016;139:2957–2969. doi: 10.1093/brain/aww214.
- Hachinski V, Iadecola C, Petersen RC, et al. National Institute of Neurological Disorders and Stroke-Canadian Stroke Network vascular cognitive impairment harmonization standards. *Stroke*. 2006;37:2220–2241. doi: 10.1161/01.STR.0000237236.88823.47.
- Sachdev PS, Brodaty H, Valenzuela MJ, Lorentz L, Looi JC, Wen W, Zagami AS. The neuropsychological profile of vascular cognitive impairment in stroke and TIA patients. *Neurology*. 2004;62:912–919.
- Stephens S, Kenny RA, Rowan E, Allan L, Kalaria RN, Bradbury M, Ballard CG. Neuropsychological characteristics of mild vascular

- cognitive impairment and dementia after stroke. *Int J Geriatr Psychiatry*. 2004;19:1053–1057. doi: 10.1002/gps.1209.
31. Winblad B, Palmer K, Kivipelto M, et al. Mild cognitive impairment—beyond controversies, towards a consensus: report of the International Working Group on Mild Cognitive Impairment. *J Intern Med*. 2004;256:240–246. doi: 10.1111/j.1365-2796.2004.01380.x.
  32. Rasquin SM, Lodder J, Verhey FR. Predictors of reversible mild cognitive impairment after stroke: a 2-year follow-up study. *J Neurol Sci*. 2005;229-230:21–25. doi: 10.1016/j.jns.2004.11.015.
  33. Narushima K, Chan KL, Kosier JT, Robinson RG. Does cognitive recovery after treatment of poststroke depression last? A 2-year follow-up of cognitive function associated with poststroke depression. *Am J Psychiatry*. 2003;160:1157–1162. doi: 10.1176/appi.ajp.160.6.1157.
  34. Steffens DC, Otey E, Alexopoulos GS, et al. Perspectives on depression, mild cognitive impairment, and cognitive decline. *Arch Gen Psychiatry*. 2006;63:130–138. doi: 10.1001/archpsyc.63.2.130.
  35. Rabins PV, Merchant A, Nestadt G. Criteria for diagnosing reversible dementia caused by depression: validation by 2-year follow-up. *Br J Psychiatry*. 1984;144:488–492.
  36. Heckman GA, Patterson CJ, Demers C, St Onge J, Turpie ID, McKelvie RS. Heart failure and cognitive impairment: challenges and opportunities. *Clin Interv Aging*. 2007;2:209–218.
  37. Singh D, Takács A. Primary cerebral lupus as a cause of reversible cognitive impairment. *Aust N Z J Psychiatry*. 2013;47:968–969. doi: 10.1177/0004867413483593.
  38. Pendlebury ST, Wadling S, Silver LE, Mehta Z, Rothwell PM. Transient cognitive impairment in TIA and minor stroke. *Stroke*. 2011;42:3116–3121. doi: 10.1161/STROKEAHA.111.621490.
  39. Sivakumar L, Kate M, Jeerakathil T, Camicioli R, Buck B, Butcher K. Serial Montreal Cognitive Assessments demonstrate reversible cognitive impairment in patients with acute transient ischemic attack and minor stroke. *Stroke*. 2014;45:1709–1715. doi: 10.1161/STROKEAHA.114.004726.
  40. Hénon H, Lebert F, Durieu I, Godefroy O, Lucas C, Pasquier F, Leys D. Confusional state in stroke: relation to preexisting dementia, patient characteristics, and outcome. *Stroke*. 1999;30:773–779.
  41. Oldenbeuving AW, de Kort PL, Jansen BP, Algra A, Kappelle LJ, Roks G. Delirium in the acute phase after stroke: incidence, risk factors, and outcome. *Neurology*. 2011;76:993–999. doi: 10.1212/WNL.0b013e318210411f.
  42. Shi Q, Presutti R, Selchen D, Saposnik G. Delirium in acute stroke: a systematic review and meta-analysis. *Stroke*. 2012;43:645–649. doi: 10.1161/STROKEAHA.111.643726.
  43. Kimura M, Robinson RG, Kosier JT. Treatment of cognitive impairment after poststroke depression: a double-blind treatment trial. *Stroke*. 2000;31:1482–1486.
  44. Iadecola C. The pathobiology of vascular dementia. *Neuron*. 2013;80:844–866. doi: 10.1016/j.neuron.2013.10.008.
  45. Schneider JA, Wilson RS, Cochran EJ, Bienias JL, Arnold SE, Evans DA, Bennett DA. Relation of cerebral infarctions to dementia and cognitive function in older persons. *Neurology*. 2003;60:1082–1088.
  46. White L, Small BJ, Petrovitch H, Ross GW, Masaki K, Abbott RD, Hardman J, Davis D, Nelson J, Markesbery W. Recent clinical-pathologic research on the causes of dementia in late life: update from the Honolulu-Asia Aging Study. *J Geriatr Psychiatry Neurol*. 2005;18:224–227. doi: 10.1177/0891988705281872.
  47. Sonnen JA, Larson EB, Crane PK, Haneuse S, Li G, Schellenberg GD, Craft S, Leverenz JB, Montine TJ. Pathological correlates of dementia in a longitudinal, population-based sample of aging. *Ann Neurol*. 2007;62:406–413. doi: 10.1002/ana.21208.
  48. Schneider JA, Arvanitakis Z, Bang W, Bennett DA. Mixed brain pathologies account for most dementia cases in community-dwelling older persons. *Neurology*. 2007;69:2197–2204. doi: 10.1212/01.wnl.0000271090.28148.24.
  49. Vemuri P, Lesnick TG, Przybelski SA, et al. Vascular and amyloid pathologies are independent predictors of cognitive decline in normal elderly. *Brain*. 2015;138:761–771. doi: 10.1093/brain/awu393.
  50. Zieren N, Duering M, Peters N, Reyes S, Jouvent E, Hervé D, Gschwendtner A, Mewald Y, Opherk C, Chabriat H, Dichgans M. Education modifies the relation of vascular pathology to cognitive function: cognitive reserve in cerebral autosomal dominant arteriopathy with subcortical infarcts and leukoencephalopathy. *Neurobiol Aging*. 2013;34:400–407. doi: 10.1016/j.neurobiolaging.2012.04.019.
  51. Elkins JS, Longstreth WT Jr, Manolio TA, Newman AB, Bhatelia RA, Johnston SC. Education and the cognitive decline associated with MRI-defined brain infarct. *Neurology*. 2006;67:435–440. doi: 10.1212/01.wnl.0000228246.89109.98.
  52. Szirmai I, Vastagh I, Szombathelyi E, Kamondi A. Strategic infarcts of the thalamus in vascular dementia. *J Neurol Sci*. 2002;203-204:91–97.
  53. Auchus AP, Chen CP, Sodagar SN, Thong M, Sng EC. Single stroke dementia: insights from 12 cases in Singapore. *J Neurol Sci*. 2002;203-204:85–89.
  54. Kalashnikova LA, Gulevskaya TS, Kashina EM. Disorders of higher mental function due to single infarctions in the thalamus and in the area of the thalamofrontal tracts. *Neurosci Behav Physiol*. 1999;29:397–403.
  55. Jellinger KA. Morphologic diagnosis of “vascular dementia”—a critical update. *J Neurol Sci*. 2008;270:1–12. doi: 10.1016/j.jns.2008.03.006.
  56. Snowden DA, Greiner LH, Mortimer JA, Riley KP, Greiner PA, Markesbery WR. Brain infarction and the clinical expression of Alzheimer disease. The Nun Study. *JAMA*. 1997;277:813–817.
  57. Vinters HV, Ellis WG, Zarow C, Zaias BW, Jagust WJ, Mack WJ, Chui HC. Neuropathologic substrates of ischemic vascular dementia. *J Neuropathol Exp Neurol*. 2000;59:931–945.
  58. Duering M, Zieren N, Hervé D, Jouvent E, Reyes S, Peters N, Pachai C, Opherk C, Chabriat H, Dichgans M. Strategic role of frontal white matter tracts in vascular cognitive impairment: a voxel-based lesion-symptom mapping study in CADASIL. *Brain*. 2011;134:2366–2375. doi: 10.1093/brain/awr169.
  59. Duering M, Gesierich B, Seiler S, Pirpamer L, Gonik M, Hofer E, Jouvent E, Duchesnay E, Chabriat H, Ropele S, Schmidt R, Dichgans M. Strategic white matter tracts for processing speed deficits in age-related small vessel disease. *Neurology*. 2014;82:1946–1950. doi: 10.1212/WNL.0000000000000475.
  60. Biesbroek JM, Kuijff HJ, van der Graaf Y, Vincken KL, Postma A, Mali WP, Biessels GJ, Geerlings MI; SMART Study Group. Association between subcortical vascular lesion location and cognition: a voxel-based and tract-based lesion-symptom mapping study. The SMART-MR study. *PLoS One*. 2013;8:e60541. doi: 10.1371/journal.pone.0060541.
  61. Tatemichi TK, Desmond DW, Prohovnik I, Cross DT, Gropen TI, Mohr JP, Stern Y. Confusion and memory loss from capsular genu infarction: a thalamocortical disconnection syndrome? *Neurology*. 1992;42:1966–1979.
  62. Tatemichi TK, Desmond DW, Prohovnik I. Strategic infarcts in vascular dementia. A clinical and brain imaging experience. *Arzneimittelforschung*. 1995;45:371–385.
  63. Wen W, Sachdev PS, Li JJ, Chen X, Anstey KJ. White matter hyperintensities in the forties: their prevalence and topography in an epidemiological sample aged 44–48. *Hum Brain Mapp*. 2009;30:1155–1167. doi: 10.1002/hbm.20586.
  64. de Leeuw FE, de Groot JC, Achten E, Oudkerk M, Ramos LM, Heijboer R, Hofman A, Jolles J, van Gijn J, Breteler MM. Prevalence of cerebral white matter lesions in elderly people: a population based magnetic resonance imaging study. The Rotterdam Scan Study. *J Neurol Neurosurg Psychiatry*. 2001;70:9–14.
  65. Vermeer SE, Longstreth WT Jr, Koudstaal PJ. Silent brain infarcts: a systematic review. *Lancet Neurol*. 2007;6:611–619. doi: 10.1016/S1474-4422(07)70170-9.
  66. Vermeer SE, Prins ND, den Heijer T, Hofman A, Koudstaal PJ, Breteler MM. Silent brain infarcts and the risk of dementia and cognitive decline. *N Engl J Med*. 2003;348:1215–1222. doi: 10.1056/NEJMoa022066.
  67. Debette S, Markus HS. The clinical importance of white matter hyperintensities on brain magnetic resonance imaging: systematic review and meta-analysis. *BMJ*. 2010;341:c3666.
  68. Wright CB, Festa JR, Paik MC, Schmiedigen A, Brown TR, Yoshita M, DeCarli C, Sacco R, Stern Y. White matter hyperintensities and subclinical infarction: associations with psychomotor speed and cognitive flexibility. *Stroke*. 2008;39:800–805. doi: 10.1161/STROKEAHA.107.484147.
  69. Au R, Massaro JM, Wolf PA, Young ME, Beiser A, Seshadri S, D’Agostino RB, DeCarli C. Association of white matter hyperintensity volume with decreased cognitive functioning: the Framingham Heart Study. *Arch Neurol*. 2006;63:246–250. doi: 10.1001/archneur.63.2.246.
  70. van Straaten EC, Fazekas F, Rostrup E, Scheltens P, Schmidt R, Pantoni L, Inzitari D, Waldemar G, Erkinjuntti T, Mäntylä R, Wahlund LO, Barkhof F; LADIS Group. Impact of white matter hyperintensities scoring method on correlations with clinical data: the LADIS study. *Stroke*. 2006;37:836–840. doi: 10.1161/01.STR.0000202585.26325.74.
  71. Viswanathan A, Gschwendtner A, Guichard JP, Buffon F, Cumurciuc R, O’Sullivan M, Holtmannspötter M, Pachai C, Bousser MG, Dichgans M, Chabriat H. Lacunar lesions are independently associated with disability and cognitive impairment in CADASIL. *Neurology*. 2007;69:172–179. doi: 10.1212/01.wnl.0000265221.05610.70.

72. Libon DJ, Price CC, Giovannetti T, Swenson R, Bettcher BM, Heilman KM, Pennisi A. Linking MRI hyperintensities with patterns of neuropsychological impairment: evidence for a threshold effect. *Stroke*. 2008;39:806–813. doi: 10.1161/STROKEAHA.107.489997.
73. Boone KB, Miller BL, Lesser JM, Mehringer CM, Hill-Gutierrez E, Goldberg MA, Berman NG. Neuropsychological correlates of white-matter lesions in healthy elderly subjects. A threshold effect. *Arch Neurol*. 1992;49:549–554.
74. Mungas D, Jagust WJ, Reed BR, Kramer JH, Weiner MW, Schuff N, Norman D, Mack WJ, Willis L, Chui HC. MRI predictors of cognition in subcortical ischemic vascular disease and Alzheimer's disease. *Neurology*. 2001;57:2229–2235.
75. Fein G, Di Sclafani V, Tanabe J, Cardenas V, Weiner MW, Jagust WJ, Reed BR, Norman D, Schuff N, Kusdra L, Greenfield T, Chui H. Hippocampal and cortical atrophy predict dementia in subcortical ischemic vascular disease. *Neurology*. 2000;55:1626–1635.
76. Peters N, Holtmannspötter M, Opherck C, Gschwendtner A, Herzog J, Sämann P, Dichgans M. Brain volume changes in CADASIL: a serial MRI study in pure subcortical ischemic vascular disease. *Neurology*. 2006;66:1517–1522. doi: 10.1212/01.wnl.0000216271.96364.50.
77. Peres R, De Guio F, Chabriat H, Jouvent E. Alterations of the cerebral cortex in sporadic small vessel disease: a systematic review of in vivo MRI data. *J Cereb Blood Flow Metab*. 2016;36:681–695. doi: 10.1177/0271678X15625352.
78. Gouw AA, Seewann A, van der Flier WM, Barkhof F, Rozemuller AM, Scheltens P, Geurts JJ. Heterogeneity of small vessel disease: a systematic review of MRI and histopathology correlations. *J Neurol Neurosurg Psychiatry*. 2011;82:126–135. doi: 10.1136/jnnp.2009.204685.
79. Smith EE, Schneider JA, Wardlaw JM, Greenberg SM. Cerebral microinfarcts: the invisible lesions. *Lancet Neurol*. 2012;11:272–282. doi: 10.1016/S1474-4422(11)70307-6.
80. Jouvent E, Mangin JF, Porcher R, Viswanathan A, O'Sullivan M, Guichard JP, Dichgans M, Boussier MG, Chabriat H. Cortical changes in cerebral small vessel diseases: a 3D MRI study of cortical morphology in CADASIL. *Brain*. 2008;131:2201–2208. doi: 10.1093/brain/awn129.
81. Wardlaw JM, Smith EE, Biessels GJ, et al; STRIVE v1). Neuroimaging standards for research into small vessel disease and its contribution to ageing and neurodegeneration. *Lancet Neurol*. 2013;12:822–838. doi: 10.1016/S1474-4422(13)70124-8.
82. Wardlaw JM, Smith C, Dichgans M. Mechanisms of sporadic cerebral small vessel disease: insights from neuroimaging. *Lancet Neurol*. 2013;12:483–497. doi: 10.1016/S1474-4422(13)70060-7.
83. Benedictus MR, Hochart A, Rossi C, Boulouis G, Hénon H, van der Flier WM, Cordonnier C. Prognostic factors for cognitive decline after intracerebral hemorrhage: a prospective cohort study. *Lancet Neurol*. 2016;15:820–829. doi: 10.1016/S1474-4422(16)00130-7.
84. Cordonnier C, Al-Shahi Salman R, Wardlaw J. Spontaneous brain microbleeds: systematic review, subgroup analyses and standards for study design and reporting. *Brain*. 2007;130:1988–2003. doi: 10.1093/brain/aw1387.
85. Cordonnier C, Leys D, Dumont F, Deramecourt V, Bordet R, Pasquier F, Hénon H. What are the causes of pre-existing dementia in patients with intracerebral haemorrhages? *Brain*. 2010;133:3281–3289. doi: 10.1093/brain/awq246.
86. Johnston SC, O'Meara ES, Manolio TA, Lefkowitz D, O'Leary DH, Goldstein S, Carlson MC, Fried LP, Longstreth WT Jr. Cognitive impairment and decline are associated with carotid artery disease in patients without clinically evident cerebrovascular disease. *Ann Intern Med*. 2004;140:237–247.
87. Cheng HL, Lin CJ, Soong BW, Wang PN, Chang FC, Wu YT, Chou KH, Lin CP, Tu PC, Lee IH. Impairments in cognitive function and brain connectivity in severe asymptomatic carotid stenosis. *Stroke*. 2012;43:2567–2573. doi: 10.1161/STROKEAHA.111.645614.
88. Balestrini S, Perozzi C, Altamura C, Vernieri F, Luzzi S, Bartolini M, Provinciali L, Silvestrini M. Severe carotid stenosis and impaired cerebral hemodynamics can influence cognitive deterioration. *Neurology*. 2013;80:2145–2150. doi: 10.1212/WNL.0b013e318295d71a.
89. Marshall RS, Festa JR, Cheung YK, Chen R, Pavol MA, Derdeyn CP, Clarke WR, Videan TO, Grubb RL, Adams HP, Powers WJ, Lazar RM. Cerebral hemodynamics and cognitive impairment: baseline data from the RECON trial. *Neurology*. 2012;78:250–255. doi: 10.1212/WNL.0b013e31824365d3.
90. Justin BN, Turek M, Hakim AM. Heart disease as a risk factor for dementia. *Clin Epidemiol*. 2013;5:135–145. doi: 10.2147/CLEPS30621.
91. Alosco ML, Brickman AM, Spitznagel MB, Garcia SL, Narkhede A, Griffith EY, Raz N, Cohen R, Sweet LH, Colbert LH, Josephson R, Hughes J, Rosneck J, Gunstad J. Cerebral perfusion is associated with white matter hyperintensities in older adults with heart failure. *Congest Heart Fail*. 2013;19:E29–E34. doi: 10.1111/chf.12025.
92. Qiu C, Winblad B, Marengoni A, Klarin I, Fastbom J, Fratiglioni L. Heart failure and risk of dementia and Alzheimer disease: a population-based cohort study. *Arch Intern Med*. 2006;166:1003–1008. doi: 10.1001/archinte.166.9.1003.
93. Stefansdottir H, Arnar DO, Aspelund T, Sigurdsson S, Jonsdottir MK, Hjaltonson H, Launer LJ, Gudnason V. Atrial fibrillation is associated with reduced brain volume and cognitive function independent of cerebral infarcts. *Stroke*. 2013;44:1020–1025. doi: 10.1161/STROKEAHA.12.679381.
94. Jellinger KA. Pathology and pathogenesis of vascular cognitive impairment—a critical update. *Front Aging Neurosci*. 2013;5:17. doi: 10.3389/fnagi.2013.00017.
95. White L. Brain lesions at autopsy in older Japanese-American men as related to cognitive impairment and dementia in the final years of life: a summary report from the Honolulu-Asia aging study. *J Alzheimers Dis*. 2009;18:713–725. doi: 10.3233/JAD-2009-1178.
96. Kalaria RN. Neuropathological diagnosis of vascular cognitive impairment and vascular dementia with implications for Alzheimer's disease. *Acta Neuropathol*. 2016;131:659–685. doi: 10.1007/s00401-016-1571-z.
97. Breteler MM. Vascular risk factors for Alzheimer's disease: an epidemiologic perspective. *Neurobiol Aging*. 2000;21:153–160.
98. Traylor M, Adib-Samii P, Harold D, Dichgans M, Williams J, Lewis CM, Markus HS; Alzheimer's Disease Neuroimaging Initiative, International Stroke Genetics Consortium (ISGC), UK Young Lacunar Stroke DNA resource; METASTROKE; International Genomics of Alzheimer's Project (IGAP), investigators. Shared genetic contribution to Ischaemic Stroke and Alzheimer's Disease. *Ann Neurol*. 2016;79:739–747. doi: 10.1002/ana.24621.
99. Schneider JA, Wilson RS, Bienias JL, Evans DA, Bennett DA. Cerebral infarctions and the likelihood of dementia from Alzheimer disease pathology. *Neurology*. 2004;62:1148–1155.
100. Toledo JB, Arnold SE, Raible K, Bretschneider J, Xie SX, Grossman M, Monsell SE, Kukull WA, Trojanowski JQ. Contribution of cerebrovascular disease in autopsy confirmed neurodegenerative disease cases in the National Alzheimer's Coordinating Centre. *Brain*. 2013;136:2697–2706. doi: 10.1093/brain/awt188.
101. Matthews FE, Brayne C, Lowe J, McKeith I, Wharton SB, Ince P. Epidemiological pathology of dementia: attributable-risks at death in the Medical Research Council Cognitive Function and Ageing Study. *PLoS Med*. 2009;6:e1000180. doi: 10.1371/journal.pmed.1000180.
102. Pendlebury ST, Rothwell PM. Prevalence, incidence, and factors associated with pre-stroke and post-stroke dementia: a systematic review and meta-analysis. *Lancet Neurol*. 2009;8:1006–1018. doi: 10.1016/S1474-4422(09)70236-4.
103. Ye BS, Seo SW, Kim JH, et al. Effects of amyloid and vascular markers on cognitive decline in subcortical vascular dementia. *Neurology*. 2015;85:1687–1693. doi: 10.1212/WNL.0000000000002097.
104. Launer LJ, Hughes TM, White LR. Microinfarcts, brain atrophy, and cognitive function: the Honolulu Asia Aging Study Autopsy Study. *Ann Neurol*. 2011;70:774–780. doi: 10.1002/ana.22520.
105. Arvanitakis Z, Capuano AW, Leurgans SE, Bennett DA, Schneider JA. Relation of cerebral vessel disease to Alzheimer's disease dementia and cognitive function in elderly people: a cross-sectional study. *Lancet Neurol*. 2016;15:934–943. doi: 10.1016/S1474-4422(16)30029-1.
106. Natté R, Maat-Schieman ML, Haan J, Bornebroek M, Roos RA, van Duinen SG. Dementia in hereditary cerebral hemorrhage with amyloidosis-Dutch type is associated with cerebral amyloid angiopathy but is independent of plaques and neurofibrillary tangles. *Ann Neurol*. 2001;50:765–772.
107. Greenberg SM, Gurol ME, Rosand J, Smith EE. Amyloid angiopathy-related vascular cognitive impairment. *Stroke*. 2004;35:2616–2619. doi: 10.1161/01.STR.0000143224.36527.44.
108. Arvanitakis Z, Leurgans SE, Wang Z, Wilson RS, Bennett DA, Schneider JA. Cerebral amyloid angiopathy pathology and cognitive domains in older persons. *Ann Neurol*. 2011;69:320–327. doi: 10.1002/ana.22112.
109. Haffner C, Malik R, Dichgans M. Genetic factors in cerebral small vessel disease and their impact on stroke and dementia. *J Cereb Blood Flow Metab*. 2016;36:158–171. doi: 10.1038/jcbfm.2015.71.

111. Joutel A, Corpechot C, Ducros A, et al. Notch3 mutations in CADASIL, a hereditary adult-onset condition causing stroke and dementia. *Nature*. 1996;383:707–710. doi: 10.1038/383707a0.
112. Peters N, Opherk C, Danek A, Ballard C, Herzog J, Dichgans M. The pattern of cognitive performance in CADASIL: a monogenic condition leading to subcortical ischemic vascular dementia. *Am J Psychiatry*. 2005;162:2078–2085. doi: 10.1176/appi.ajp.162.11.2078.
113. Chabriat H, Joutel A, Dichgans M, Tournier-Lasserre E, Bousset MG. Cadasil. *Lancet Neurol*. 2009;8:643–653. doi: 10.1016/S1474-4422(09)70127-9.
114. Hara K, Shiga A, Fukutake T, et al. Association of HTRA1 mutations and familial ischemic cerebral small-vessel disease. *N Engl J Med*. 2009;360:1729–1739. doi: 10.1056/NEJMoa0801560.
115. Beaufort N, Scharrer E, Kremmer E, Lux V, Ehrmann M, Huber R, Houlden H, Werring D, Haffner C, Dichgans M. Cerebral small vessel disease-related protease HtrA1 processes latent TGF- $\beta$  binding protein 1 and facilitates TGF- $\beta$  signaling. *Proc Natl Acad Sci U S A*. 2014;111:16496–16501. doi: 10.1073/pnas.1418087111.
116. Debette S, Beiser A, DeCarli C, Au R, Himali JJ, Kelly-Hayes M, Romero JR, Kase CS, Wolf PA, Seshadri S. Association of MRI markers of vascular brain injury with incident stroke, mild cognitive impairment, dementia, and mortality: the Framingham Offspring Study. *Stroke*. 2010;41:600–606. doi: 10.1161/STROKEAHA.109.570044.
117. Smith EE, O'Donnell M, Dagenais G, et al; PURE Investigators. Early cerebral small vessel disease and brain volume, cognition, and gait. *Ann Neurol*. 2015;77:251–261. doi: 10.1002/ana.24320.
118. Westover MB, Bianchi MT, Yang C, Schneider JA, Greenberg SM. Estimating cerebral microinfarct burden from autopsy samples. *Neurology*. 2013;80:1365–1369. doi: 10.1212/WNL.0b013e31828c2f52.
119. Brundel M, de Bresser J, van Dillen JJ, Kappelle LJ, Biessels GJ. Cerebral microinfarcts: a systematic review of neuropathological studies. *J Cereb Blood Flow Metab*. 2012;32:425–436. doi: 10.1038/jcbfm.2011.200.
120. van Rooden S, Goos JD, van Opstal AM, Versluis MJ, Webb AG, Blauw GJ, van der Flier WM, Scheltens P, Barkhof F, van Buchem MA, van der Grond J. Increased number of microinfarcts in Alzheimer disease at 7-T MR imaging. *Radiology*. 2014;270:205–211. doi: 10.1148/radiol.13130743.
121. Kövari E, Gold G, Herrmann FR, Canuto A, Hof PR, Bouras C, Giannakopoulos P. Cortical microinfarcts and demyelination affect cognition in cases at high risk for dementia. *Neurology*. 2007;68:927–931. doi: 10.1212/01.wnl.0000257094.10655.9a.
122. White L, Petrovitch H, Hardman J, Nelson J, Davis DG, Ross GW, Masaki K, Launer L, Markesbery WR. Cerebrovascular pathology and dementia in autopsied Honolulu-Asia Aging Study participants. *Ann NY Acad Sci*. 2002;977:9–23.
123. Arvanitakis Z, Leurgans SE, Barnes LL, Bennett DA, Schneider JA. Microinfarct pathology, dementia, and cognitive systems. *Stroke*. 2011;42:722–727. doi: 10.1161/STROKEAHA.110.595082.
124. van Veluw SJ, Zwanenburg JJ, Engelen-Lee J, Spliet WG, Hendrikse J, Luijten PR, Biessels GJ. In vivo detection of cerebral cortical microinfarcts with high-resolution 7T MRI. *J Cereb Blood Flow Metab*. 2013;33:322–329. doi: 10.1038/jcbfm.2012.196.
125. van Veluw SJ, Hilal S, Kuijff HJ, Ikram MK, Xin X, Yeow TB, Venkatasubramanian N, Biessels GJ, Chen C. Cortical microinfarcts on 3T MRI: Clinical correlates in memory-clinic patients. *Alzheimers Dement*. 2015;11:1500–1509. doi: 10.1016/j.jalz.2014.12.010.
126. van Dalen JW, Scuir EE, van Veluw SJ, Caan MW, Nederveen AJ, Biessels GJ, van Gool WA, Richard E. Cortical microinfarcts detected in vivo on 3 Tesla MRI: clinical and radiological correlates. *Stroke*. 2015;46:255–257.
127. Auriel E, Westover MB, Bianchi MT, et al. Estimating total cerebral microinfarct burden from diffusion-weighted imaging. *Stroke*. 2015;46:2129–2135. doi: 10.1161/STROKEAHA.115.009208.
128. Qiu C, Cotch MF, Sigurdsson S, Jonsson PV, Jonsdottir MK, Sveinbjrnsdottir S, Eiriksdottir G, Klein R, Harris TB, van Buchem MA, Gudnason V, Launer LJ. Cerebral microbleeds, retinopathy, and dementia: the AGES-Reykjavik Study. *Neurology*. 2010;75:2221–2228. doi: 10.1212/WNL.0b013e3182020349.
129. Buell JS, Dawson-Hughes B, Scott TM, Weiner DE, Dallal GE, Qui WQ, Bergethon P, Rosenberg IH, Folstein MF, Patz S, Bhadelia RA, Tucker KL. 25-Hydroxyvitamin D, dementia, and cerebrovascular pathology in elders receiving home services. *Neurology*. 2010;74:18–26. doi: 10.1212/WNL.0b013e318181beeb7.
130. Poels MM, Ikram MA, van der Lugt A, Hofman A, Niessen WJ, Krestin GP, Breteler MM, Vernooij MW. Cerebral microbleeds are associated with worse cognitive function: the Rotterdam Scan Study. *Neurology*. 2012;78:326–333. doi: 10.1212/WNL.0b013e3182452928.
131. Seo SW, Hwa Lee B, Kim EJ, Chin J, Sun Cho Y, Yoon U, Na DL. Clinical significance of microbleeds in subcortical vascular dementia. *Stroke*. 2007;38:1949–1951. doi: 10.1161/STROKEAHA.106.477315.
132. Vernooij MW, van der Lugt A, Ikram MA, Wielopolski PA, Niessen WJ, Hofman A, Krestin GP, Breteler MM. Prevalence and risk factors of cerebral microbleeds: the Rotterdam Scan Study. *Neurology*. 2008;70:1208–1214. doi: 10.1212/01.wnl.0000307750.41970.d9.
133. Dichgans M, Holtmannspötter M, Herzog J, Peters N, Bergmann M, Yousry TA. Cerebral microbleeds in CADASIL: a gradient-echo magnetic resonance imaging and autopsy study. *Stroke*. 2002;33:67–71.
134. van Veluw SJ, Biessels GJ, Klijn CJ, Rozemuller AJ. Heterogeneous histopathology of cortical microbleeds in cerebral amyloid angiopathy. *Neurology*. 2016;86:867–871. doi: 10.1212/WNL.0000000000002419.
135. Miwa K, Tanaka M, Okazaki S, Yagita Y, Sakaguchi M, Mochizuki H, Kitagawa K. Multiple or mixed cerebral microbleeds and dementia in patients with vascular risk factors. *Neurology*. 2014;83:646–653. doi: 10.1212/WNL.0000000000000692.
136. Werring DJ, Frazer DW, Coward LJ, Losseff NA, Watt H, Cipolotti L, Brown MM, Jäger HR. Cognitive dysfunction in patients with cerebral microbleeds on T2\*-weighted gradient-echo MRI. *Brain*. 2004;127:2265–2275. doi: 10.1093/brain/awh253.
137. van Norden AG, van den Berg HA, de Laat KF, Gons RA, van Dijk EJ, de Leeuw FE. Frontal and temporal microbleeds are related to cognitive function: the Radboud University Nijmegen Diffusion Tensor and Magnetic Resonance Cohort (RUN DMC) Study. *Stroke*. 2011;42:3382–3386. doi: 10.1161/STROKEAHA.111.629634.
138. Patel B, Lawrence AJ, Chung AW, Rich P, Mackinnon AD, Morris RG, Barrick TR, Markus HS. Cerebral microbleeds and cognition in patients with symptomatic small vessel disease. *Stroke*. 2013;44:356–361. doi: 10.1161/STROKEAHA.112.670216.
139. Heringa SM, Reijmer YD, Leemans A, Koek HL, Kappelle LJ, Biessels GJ; Utrecht Vascular Cognitive Impairment (VCI) Study Group. Multiple microbleeds are related to cerebral network disruptions in patients with early Alzheimer's disease. *J Alzheimers Dis*. 2014;38:211–221. doi: 10.3233/JAD-130542.
140. Tuladhara AM, van Dijk E, Zwiers MP, van Norden AG, de Laat KF, Shumskaya E, Norris DG, de Leeuw FE. Structural network connectivity and cognition in cerebral small vessel disease. *Hum Brain Mapp*. 2016;37:300–310. doi: 10.1002/hbm.23032.
141. Reijmer YD, Fotiadis P, Martinez-Ramirez S, et al. Structural network alterations and neurological dysfunction in cerebral amyloid angiopathy. *Brain*. 2015;138:179–188. doi: 10.1093/brain/awu316.
142. Charidimou A, Linn J, Vernooij MW, Opherk C, Akoudad S, Baron JC, Greenberg SM, Jäger HR, Werring DJ. Cortical superficial siderosis: detection and clinical significance in cerebral amyloid angiopathy and related conditions. *Brain*. 2015;138:2126–2139. doi: 10.1093/brain/awv162.
143. Linn J, Halpin A, Demaerel P, Ruhland J, Giese AD, Dichgans M, van Buchem MA, Bruckmann H, Greenberg SM. Prevalence of superficial siderosis in patients with cerebral amyloid angiopathy. *Neurology*. 2010;74:1346–1350. doi: 10.1212/WNL.0b013e3181dad605.
144. Vernooij MW, Ikram MA, Hofman A, Krestin GP, Breteler MM, van der Lugt A. Superficial siderosis in the general population. *Neurology*. 2009;73:202–205. doi: 10.1212/WNL.0b013e3181ae7c5e.
145. Zonneveld HI, Goos JD, Wattjes MP, Prins ND, Scheltens P, van der Flier WM, Kuijper JP, Muller M, Barkhof F. Prevalence of cortical superficial siderosis in a memory clinic population. *Neurology*. 2014;82:698–704. doi: 10.1212/WNL.0000000000000150.
146. Wollenweber FA, Buerger K, Mueller C, Ertl-Wagner B, Malik R, Dichgans M, Linn J, Opherk C. Prevalence of cortical superficial siderosis in patients with cognitive impairment. *J Neurol*. 2014;261:277–282. doi: 10.1007/s00415-013-7181-y.
147. Na HK, Park JH, Kim JH, Kim ST, Werring DJ, Seo SW, Na DL. Cortical superficial siderosis: a marker of vascular amyloid in patients with cognitive impairment. *Neurology*. 2015;84:849–855. doi: 10.1212/WNL.0000000000001288.
148. Holtmannspötter M, Peters N, Opherk C, Martin D, Herzog J, Brückmann H, Sämann P, Gschwendtner A, Dichgans M. Diffusion magnetic resonance histograms as a surrogate marker and predictor of disease progression in CADASIL: a two-year follow-up study. *Stroke*. 2005;36:2559–2565. doi: 10.1161/01.STR.0000189696.70989.a4.
149. Nitkunan A, Barrick TR, Charlton RA, Clark CA, Markus HS. Multimodal MRI in cerebral small vessel disease: its relationship with cognition and sensitivity to change over time. *Stroke*. 2008;39:1999–2005. doi: 10.1161/STROKEAHA.107.507475.

150. Tuladhar AM, van Norden AG, de Laat KF, Zwiers MP, van Dijk EJ, Norris DG, de Leeuw FE. White matter integrity in small vessel disease is related to cognition. *Neuroimage Clin*. 2015;7:518–524. doi: 10.1016/j.nicl.2015.02.003.
151. J Jokinen H, Schmidt R, Ropele S, Fazekas F, Gouw AA, Barkhof F, Scheltens P, Madureira S, Verdelho A, Ferro JM, Wallin A, Poggesi A, Inzitari D, Pantoni L, Erkinjuntti T. Diffusion changes predict cognitive and functional outcome: the LADIS study. *Ann Neurol*. 2013;73:576–583.
152. Baykara E, Gesierich B, Adam R, et al; Alzheimer's Disease Neuroimaging Initiative. A novel imaging marker for small vessel disease based on skeletonization of white matter tracts and diffusion histograms. *Ann Neurol*. 2016;80:581–592. doi: 10.1002/ana.24758.
153. Adams HH, Hilal S, Schwingenschuh P, et al. A priori collaboration in population imaging: The Uniform Neuro-Imaging of Virchow-Robin Spaces Enlargement consortium. *Alzheimers Dement (Amst)*. 2015;1:513–520. doi: 10.1016/j.dadm.2015.10.004.
154. Martinez-Ramirez S, Pontes-Neto OM, Dumas AP, Auriel E, Halpin A, Quimby M, Guro ME, Greenberg SM, Viswanathan A. Topography of dilated perivascular spaces in subjects from a memory clinic cohort. *Neurology*. 2013;80:1551–1556. doi: 10.1212/WNL.0b013e31828f1876.
155. MacLulich AM, Wardlaw JM, Ferguson KJ, Starr JM, Seckl JR, Deary IJ. Enlarged perivascular spaces are associated with cognitive function in healthy elderly men. *J Neurol Neurosurg Psychiatry*. 2004;75:1519–1523. doi: 10.1136/jnnp.2003.030858.
156. Patankar TF, Mitra D, Varma A, Snowden J, Neary D, Jackson A. Dilatation of the Virchow-Robin space is a sensitive indicator of cerebral microvascular disease: study in elderly patients with dementia. *AJNR Am J Neuroradiol*. 2005;26:1512–1520.
157. Riba-Llena I, Nafria C, Mundet X, López-Rueda A, Fernández-Cortiñas I, Jarca CI, Jiménez-Balado J, Domingo M, Tovar JL, Orfila F, Pujadas F, Álvarez-Sabín J, Maisterra O, Montaner J, Delgado P. Assessment of enlarged perivascular spaces and their relation to target organ damage and mild cognitive impairment in patients with hypertension. *Eur J Neurol*. 2016;23:1044–1050. doi: 10.1111/ene.12979.
158. Potter GM, Doubal FN, Jackson CA, Chappell FM, Sudlow CL, Dennis MS, Wardlaw JM. Enlarged perivascular spaces and cerebral small vessel disease. *Int J Stroke*. 2015;10:376–381. doi: 10.1111/ijs.12054.
159. Charidimou A, Meegahage R, Fox Z, Peeters A, Vandermeeren Y, Laloux P, Baron JC, Jäger HR, Werring DJ. Enlarged perivascular spaces as a marker of underlying arteriopathy in intracerebral haemorrhage: a multi-centre MRI cohort study. *J Neurol Neurosurg Psychiatry*. 2013;84:624–629. doi: 10.1136/jnnp-2012-304434.
160. Mutlu U, Adams HH, Hofman A, Lugt AV, Klaver CC, Vernooij MW, Ikram MK, Ikram MA. Retinal microvascular calibers are associated with enlarged perivascular spaces in the brain. *Stroke*. 2016;47:1374–1376. doi: 10.1161/STROKEAHA.115.012438.
161. Iliff JJ, Wang M, Liao Y, Plogg BA, Peng W, Gundersen GA, Benveniste H, Vates GE, Deane R, Goldman SA, Nagelhus EA, Nedergaard M. A paravascular pathway facilitates CSF flow through the brain parenchyma and the clearance of interstitial solutes, including amyloid  $\beta$ . *Sci Transl Med*. 2012;4:147ra111. doi: 10.1126/scitranslmed.3003748.
162. Ogawa T, Yoshida Y, Okudera T, Noguchi K, Kado H, Uemura K. Secondary thalamic degeneration after cerebral infarction in the middle cerebral artery distribution: evaluation with MR imaging. *Radiology*. 1997;204:255–262. doi: 10.1148/radiology.204.1.9205256.
163. Jindahra P, Petrie A, Plant GT. The time course of retrograde trans-synaptic degeneration following occipital lobe damage in humans. *Brain*. 2012;135:534–541. doi: 10.1093/brain/awr324.
164. Schroeter M, Zickler P, Denhardt DT, Hartung HP, Jander S. Increased thalamic neurodegeneration following ischaemic cortical stroke in osteopontin-deficient mice. *Brain*. 2006;129:1426–1437. doi: 10.1093/brain/awl094.
165. Foster V, Oakley AE, Slade JY, Hall R, Polvikoski TM, Burke M, Thomas AJ, Khundakar A, Allan LM, Kalaria RN. Pyramidal neurons of the prefrontal cortex in post-stroke, vascular and other ageing-related dementias. *Brain*. 2014;137:2509–2521. doi: 10.1093/brain/awu172.
166. Fotiadis P, van Rooden S, van der Grond J, et al. Cortical atrophy in patients with cerebral amyloid angiopathy: a case-control study. *Lancet Neurol*. 2016;15:811–819. doi: 10.1016/S1474-4422(16)30030-8.
167. Kim HJ, Yang JJ, Kwon H, Kim C, Lee JM, Chun P, Kim YJ, Jung NY, Chin J, Kim S, Woo SY, Choe YS, Lee KH, Kim ST, Kim JS, Lee JH. Relative impact of amyloid-beta, lacunes, and downstream imaging markers on cognitive trajectories. *Brain*. 2016;139:2516–2527. doi: 10.1093/brain/aww148.
168. Viswanathan A, Godin O, Jouvent E, O'Sullivan M, Gschwendtner A, Peters N, Duering M, Guichard JP, Holtmannspötter M, Dufouil C, Pachai C, Bousser MG, Dichgans M, Chabriat H. Impact of MRI markers in subcortical vascular dementia: a multi-modal analysis in CADASIL. *Neurobiol Aging*. 2010;31:1629–1636. doi: 10.1016/j.neurobiolaging.2008.09.001.
169. Righart R, Duering M, Gonik M, Jouvent E, Reyes S, Hervé D, Chabriat H, Dichgans M. Impact of regional cortical and subcortical changes on processing speed in cerebral small vessel disease. *Neuroimage Clin*. 2013;2:854–861. doi: 10.1016/j.nicl.2013.06.006.
170. Kim HJ, Im K, Kwon H, Lee JM, Kim C, Kim YJ, Jung NY, Cho H, Ye BS, Noh Y, Kim GH, Ko ED, Kim JS, Choe YS, Lee KH. Clinical effect of white matter network disruption related to amyloid and small vessel disease. *Neurology*. 2015;85:63–70.
171. Tuladhar AM, Reid AT, Shumskaya E, de Laat KF, van Norden AG, van Dijk EJ, Norris DG, de Leeuw FE. Relationship between white matter hyperintensities, cortical thickness, and cognition. *Stroke*. 2015;46:425–432. doi: 10.1161/STROKEAHA.114.007146.
172. Schmidt R, Ropele S, Enzinger C, Petrovic K, Smith S, Schmidt H, Matthews PM, Fazekas F. White matter lesion progression, brain atrophy, and cognitive decline: the Austrian stroke prevention study. *Ann Neurol*. 2005;58:610–616. doi: 10.1002/ana.20630.
173. Zhang J, Zhang Y, Xing S, Liang Z, Zeng J. Secondary neurodegeneration in remote regions after focal cerebral infarction: a new target for stroke management? *Stroke*. 2012;43:1700–1705. doi: 10.1161/STROKEAHA.111.632448.
174. Park HJ, Friston K. Structural and functional brain networks: from connections to cognition. *Science*. 2013;342:1238411. doi: 10.1126/science.1238411.
175. Bressler SL, Menon V. Large-scale brain networks in cognition: emerging methods and principles. *Trends Cogn Sci*. 2010;14:277–290. doi: 10.1016/j.tics.2010.04.004.
176. Lawrence AJ, Chung AW, Morris RG, Markus HS, Barrick TR. Structural network efficiency is associated with cognitive impairment in small-vessel disease. *Neurology*. 2014;83:304–311. doi: 10.1212/WNL.0000000000000612.
177. Tuladhar AM, van Uden IW, Rutten-Jacobs LC, Lawrence A, van der Holst H, van Norden A, de Laat K, van Dijk E, Claassen JA, Kessels RP, Markus HS, Norris DG, de Leeuw FE. Structural network efficiency predicts conversion to dementia. *Neurology*. 2016;86:1112–1119. doi: 10.1212/WNL.0000000000002502.
178. Pappa JM, den Heijer T, de Koning I, Mattace-Raso FU, van der Lugt A, van der Lijn F, van Swieten JC, Koudstaal PJ, Smits M, Prins ND. The influence of cerebral small vessel disease on default mode network deactivation in mild cognitive impairment. *Neuroimage Clin*. 2012;2:33–42. doi: 10.1016/j.nicl.2012.11.005.
179. Sun YW, Qin LD, Zhou Y, Xu Q, Qian LJ, Tao J, Xu JR. Abnormal functional connectivity in patients with vascular cognitive impairment, no dementia: a resting-state functional magnetic resonance imaging study. *Behav Brain Res*. 2011;223:388–394. doi: 10.1016/j.bbr.2011.05.006.
180. Cullen B, Moreton FC, Stringer MS, Krishnadas R, Kalladka D, López-González MR, Santosh C, Schwarzbauer C, Muir KW. Resting state connectivity and cognitive performance in adults with cerebral autosomal-dominant arteriopathy with subcortical infarcts and leukoencephalopathy. *J Cereb Blood Flow Metab*. 2016;36:981–991. doi: 10.1177/0271678X16636395.
181. Kim HJ, Cha J, Lee JM, Shin JS, Jung NY, Kim YJ, Choe YS, Lee KH, Kim ST, Kim JS, Lee JH, Na DL, Seo SW. Distinctive resting state network disruptions among Alzheimer's disease, subcortical vascular dementia, and mixed dementia patients. *J Alzheimers Dis*. 2016;50:709–718. doi: 10.3233/JAD-150637.
182. Buckner RL, Sepulcre J, Talukdar T, Krienen FM, Liu H, Hedden T, Andrews-Hanna JR, Sperling RA, Johnson KA. Cortical hubs revealed by intrinsic functional connectivity: mapping, assessment of stability, and relation to Alzheimer's disease. *J Neurosci*. 2009;29:1860–1873. doi: 10.1523/JNEUROSCI.5062-08.2009.
183. Pievani M, de Haan W, Wu T, Seeley WW, Frisoni GB. Functional network disruption in the degenerative dementias. *Lancet Neurol*. 2011;10:829–843. doi: 10.1016/S1474-4422(11)70158-2.
184. Ivan CS, Seshadri S, Beiser A, Au R, Kase CS, Kelly-Hayes M, Wolf PA. Dementia after stroke: the Framingham Study. *Stroke*. 2004;35:1264–1268. doi: 10.1161/01.STR.0000127810.92616.78.
185. Leys D, Hénon H, Mackowiak-Cordoliani MA, Pasquier F. Poststroke dementia. *Lancet Neurol*. 2005;4:752–759. doi: 10.1016/S1474-4422(05)70221-0.
186. Bacha P, Forte SE, Perper SJ, Trentham DE, Nichols JC. Anti-arthritis effects demonstrated by an interleukin-2 receptor-targeted cytotoxin (DAB486IL-2) in rat adjuvant arthritis. *Eur J Immunol*. 1992;22:1673–1679. doi: 10.1002/eji.1830220702.



187. Levine DA, Galecki AT, Langa KM, Unverzagt FW, Kabeto MU, Giordani B, Wadley VG. Trajectory of cognitive decline after incident stroke. *JAMA*. 2015;314:41–51. doi: 10.1001/jama.2015.6968.
188. Rasquin SM, Lodder J, Ponds RW, Winkens I, Jolles J, Verhey FR. Cognitive functioning after stroke: a one-year follow-up study. *Dement Geriatr Cogn Disord*. 2004;18:138–144. doi: 10.1159/000079193.
189. Mandzia JL, Smith EE, Horton M, Hanly P, Barber PA, Godzwon C, Donaldson E, Asdaghi N, Patel S, Coutts SB. Imaging and baseline predictors of cognitive performance in minor ischemic stroke and patients with transient ischemic attack at 90 days. *Stroke*. 2016;47:726–731. doi: 10.1161/STROKEAHA.115.011507.
190. Allan LM, Rowan EN, Firkbank MJ, Thomas AJ, Parry SW, Polvikoski TM, O'Brien JT, Kalaria RN. Long term incidence of dementia, predictors of mortality and pathological diagnosis in older stroke survivors. *Brain*. 2011;134:3716–3727. doi: 10.1093/brain/awr273.
191. Narasimhalu K, Ang S, De Silva DA, Wong MC, Chang HM, Chia KS, Auchus AP, Chen C. Severity of CIND and MCI predict incidence of dementia in an ischemic stroke cohort. *Neurology*. 2009;73:1866–1872. doi: 10.1212/WNL.0b013e3181c3fcb7.
192. Jokinen H, Melkas S, Ylikoski R, Pohjasvaara T, Kaste M, Erkinjuntti T, Hietanen M. Post-stroke cognitive impairment is common even after successful clinical recovery. *Eur J Neurol*. 2015;22:1288–1294. doi: 10.1111/ene.12743.
193. Qu Y, Zhuo L, Li N, Hu Y, Chen W, Zhou Y, Wang J, Tao Q, Hu J, Nie X, Zhan S. Prevalence of post-stroke cognitive impairment in china: a community-based, cross-sectional study. *PLoS One*. 2015;10:e0122864. doi: 10.1371/journal.pone.0122864.
194. Hanly JG, Walsh NM, Fisk JD, Eastwood B, Hong C, Sherwood G, Jones JV, Jones E, Elkon K. Cognitive impairment and autoantibodies in systemic lupus erythematosus. *Br J Rheumatol*. 1993;32:291–296.
195. Miu DK, Yeung JC. Incidence of post-stroke delirium and 1-year outcome. *Geriatr Gerontol Int*. 2013;13:123–129. doi: 10.1111/j.1447-0594.2012.00871.x.
196. Narasimhalu K, Ang S, De Silva DA, Wong MC, Chang HM, Chia KS, Auchus AP, Chen CP. The prognostic effects of poststroke cognitive impairment no dementia and domain-specific cognitive impairments in nondisabled ischemic stroke patients. *Stroke*. 2011;42:883–888. doi: 10.1161/STROKEAHA.110.594671.
197. Pendlebury ST. Stroke-related dementia: rates, risk factors and implications for future research. *Maturitas*. 2009;64:165–171. doi: 10.1016/j.maturitas.2009.09.010.
198. Yang J, Wong A, Wang Z, et al. Risk factors for incident dementia after stroke and transient ischemic attack. *Alzheimers Dement*. 2015;11:16–23. doi: 10.1016/j.jalz.2014.01.003.
199. Savva GM, Stephan BC; Alzheimer's Society Vascular Dementia Systematic Review Group. Epidemiological studies of the effect of stroke on incident dementia: a systematic review. *Stroke*. 2010;41:e41–e46. doi: 10.1161/STROKEAHA.109.559880.
200. Jansen WJ, Ossenkoppele R, Knol DL, et al; Amyloid Biomarker Study Group. Prevalence of cerebral amyloid pathology in persons without dementia: a meta-analysis. *JAMA*. 2015;313:1924–1938. doi: 10.1001/jama.2015.4668.
201. Liu W, Wong A, Au L, Yang J, Wang Z, Leung EY, Chen S, Ho CL, Mok VC. Influence of amyloid- $\beta$  on cognitive decline after stroke/transient ischemic attack: three-year longitudinal study. *Stroke*. 2015;46:3074–3080. doi: 10.1161/STROKEAHA.115.010449.
202. Diener HC, Sacco RL, Yusuf S, et al; Prevention Regimen for Effectively Avoiding Second Strokes (PROFESS) study group. Effects of aspirin plus extended-release dipyridamole versus clopidogrel and telmisartan on disability and cognitive function after recurrent stroke in patients with ischaemic stroke in the Prevention Regimen for Effectively Avoiding Second Strokes (PROFESS) trial: a double-blind, active and placebo-controlled study. *Lancet Neurol*. 2008;7:875–884. doi: 10.1016/S1474-4422(08)70198-4.
203. Pearce LA, McClure LA, Anderson DC, Jacova C, Sharma M, Hart RG, Benavente OR; SPS3 Investigators. Effects of long-term blood pressure lowering and dual antiplatelet treatment on cognitive function in patients with recent lacunar stroke: a secondary analysis from the SPS3 randomised trial. *Lancet Neurol*. 2014;13:1177–1185. doi: 10.1016/S1474-4422(14)70224-8.
204. Garcia PY, Roussel M, Bugnicourt JM, Lamy C, Canaple S, Peltier J, Loas G, Deramond H, Godfrey O. Cognitive impairment and dementia after intracerebral hemorrhage: a cross-sectional study of a hospital-based series. *J Stroke Cerebrovasc Dis*. 2013;22:80–86. doi: 10.1016/j.jstrokecerebrovasdis.2011.06.013.
205. Tveiten A, Ljøstad U, Mygland Å, Naess H. Functioning of long-term survivors of first-ever intracerebral hemorrhage. *Acta Neurol Scand*. 2014;129:269–275. doi: 10.1111/ane.12185.
206. Vinters HV. Cerebral amyloid angiopathy and Alzheimer's disease: two entities or one? *J Neurol Sci*. 1992;112:1–3.
207. Greenberg SM, Vonsattel JP. Diagnosis of cerebral amyloid angiopathy. Sensitivity and specificity of cortical biopsy. *Stroke*. 1997;28:1418–1422.
208. Neuropathology Group. Medical Research Council Cognitive Function and Aging Study. Pathological correlates of late-onset dementia in a multicentre, community-based population in England and Wales. Neuropathology Group of the Medical Research Council Cognitive Function and Ageing Study (MRC CFAS). *Lancet*. 2001;357:169–175.
209. Biffi A, Greenberg SM. Cerebral amyloid angiopathy: a systematic review. *J Clin Neurol*. 2011;7:1–9. doi: 10.3988/jcn.2011.7.1.1.
210. Jellinger KA. Alzheimer disease and cerebrovascular pathology: an update. *J Neural Transm (Vienna)*. 2002;109:813–836. doi: 10.1007/s007020200068.
211. Pfeifer LA, White LR, Ross GW, Petrovitch H, Launer LJ. Cerebral amyloid angiopathy and cognitive function: the HAAS autopsy study. *Neurology*. 2002;58:1629–1634.
212. Greenberg SM, Vonsattel JP, Stakes JW, Gruber M, Finklestein SP. The clinical spectrum of cerebral amyloid angiopathy: presentations without lobar hemorrhage. *Neurology*. 1993;43:2073–2079.
213. Boyle PA, Yu L, Nag S, Leurgans S, Wilson RS, Bennett DA, Schneider JA. Cerebral amyloid angiopathy and cognitive outcomes in community-based older persons. *Neurology*. 2015;85:1930–1936. doi: 10.1212/WNL.0000000000002175.
214. Smith EE, Guroi ME, Eng JA, Engel CR, Nguyen TN, Rosand J, Greenberg SM. White matter lesions, cognition, and recurrent hemorrhage in lobar intracerebral hemorrhage. *Neurology*. 2004;63:1606–1612.
215. Knudsen KA, Rosand J, Karluk D, Greenberg SM. Clinical diagnosis of cerebral amyloid angiopathy: validation of the Boston criteria. *Neurology*. 2001;56:537–539.
216. Rosand J, Muzikansky A, Kumar A, Wisco JJ, Smith EE, Betensky RA, Greenberg SM. Spatial clustering of hemorrhages in probable cerebral amyloid angiopathy. *Ann Neurol*. 2005;58:459–462. doi: 10.1002/ana.20596.
217. Johnson KA, Gregas M, Becker JA, Kinnecom C, Salat DH, Moran EK, Smith EE, Rosand J, Rentz DM, Klunk WE, Mathis CA, Price JC, Dekosky ST, Fischman AJ, Greenberg SM. Imaging of amyloid burden and distribution in cerebral amyloid angiopathy. *Ann Neurol*. 2007;62:229–234. doi: 10.1002/ana.21164.
218. Ly JV, Donnan GA, Villemagne VL, Zavala JA, Ma H, O'Keefe G, Gong SJ, Gunawan RM, Saunders T, Ackerman U, Tochon-Danguy H, Churilov L, Phan TG, Rowe CC. 11C-PIB binding is increased in patients with cerebral amyloid angiopathy-related hemorrhage. *Neurology*. 2010;74:487–493. doi: 10.1212/WNL.0b013e3181cef7e3.
219. Verbeek MM, Kremer BP, Rikkert MO, Van Domburg PH, Skehan ME, Greenberg SM. Cerebrospinal fluid amyloid beta(40) is decreased in cerebral amyloid angiopathy. *Ann Neurol*. 2009;66:245–249. doi: 10.1002/ana.21694.
220. Van Broeckhoven C, Haan J, Bakker E, Hardy JA, Van Hul W, Wehnert A, Vegter-Van der Vlis M, Roos RA. Amyloid beta protein precursor gene and hereditary cerebral hemorrhage with amyloidosis (Dutch). *Science*. 1990;248:1120–1122.
221. Spreen O, Strauss E. *A Compendium of Neuropsychological Tests*. 2nd ed. New York, NY: Oxford University Press; 1998.
222. Looi JC, Sachdev PS. Differentiation of vascular dementia from AD on neuropsychological tests. *Neurology*. 1999;53:670–678.
223. Folstein MF, Folstein SE, McHugh PR. "Mini-mental state". A practical method for grading the cognitive state of patients for the clinician. *J Psychiatr Res*. 1975;12:189–198.
224. Nasreddine ZS, Phillips NA, Bédirian V, Charbonneau S, Whitehead V, Collin I, Cummings JL, Chertkow H. The Montreal Cognitive Assessment, MoCA: a brief screening tool for mild cognitive impairment. *J Am Geriatr Soc*. 2005;53:695–699. doi: 10.1111/j.1532-5415.2005.53221.x.
225. Pendlebury ST, Mariz J, Bull L, Mehta Z, Rothwell PM. MoCA, ACE-R, and MMSE versus the National Institute of Neurological Disorders and Stroke-Canadian Stroke Network Vascular Cognitive Impairment Harmonization Standards Neuropsychological Battery after TIA and stroke. *Stroke*. 2012;43:464–469. doi: 10.1161/STROKEAHA.111.633586.
226. Barber M, Stott DJ. Validity of the Telephone Interview for Cognitive Status (TICS) in post-stroke subjects. *Int J Geriatr Psychiatry*. 2004;19:75–79. doi: 10.1002/gps.1041.

227. Pendlebury ST, Welch SJ, Cuthbertson FC, Mariz J, Mehta Z, Rothwell PM. Telephone assessment of cognition after transient ischemic attack and stroke: modified telephone interview of cognitive status and telephone Montreal Cognitive Assessment versus face-to-face Montreal Cognitive Assessment and neuropsychological battery. *Stroke*. 2013;44:227–229. doi: 10.1161/STROKEAHA.112.673384.
228. Jorm AF. A short form of the Informant Questionnaire on Cognitive Decline in the Elderly (IQCODE): development and cross-validation. *Psychol Med*. 1994;24:145–153.
229. Koski L, Xie H, Konszowicz S, Tetteh R. French-English cross-linguistic comparison and diagnostic impact of the AD-8 dementia screening questionnaire in a geriatric assessment clinic. *Dement Geriatr Cogn Disord*. 2010;29:265–274. doi: 10.1159/000289815.
230. Hamilton M. A rating scale for depression. *J Neurol Neurosurg Psychiatry*. 1960;23:56–62.
231. Radloff LS. The CES-D scale: a self-report depression scale for research in the general population. *Appl Psychol Measurement*. 1977;1:385–392.
232. Yesavage JA, Brink TL, Rose TL, Lum O, Huang V, Adey M, Leirer VO. Development and validation of a geriatric depression screening scale: a preliminary report. *J Psychiatr Res*. 1982;17:37–49.
233. Alexopoulos GS, Abrams RC, Young RC, Shamoian CA. Use of the Cornell scale in nondemented patients. *J Am Geriatr Soc*. 1988;36:230–236.
234. Sunderland T, Alterman IS, Yount D, Hill JL, Tariot PN, Newhouse PA, Mueller EA, Mellow AM, Cohen RM. A new scale for the assessment of depressed mood in demented patients. *Am J Psychiatry*. 1988;145:955–959. doi: 10.1176/ajp.145.8.955.
235. Kalaria RN, Akinyemi R, Ihara M. Stroke injury, cognitive impairment and vascular dementia. *Biochim Biophys Acta*. 2016;1862:915–925. doi: 10.1016/j.bbdis.2016.01.015.
236. Schrijvers EM, Schürmann B, Koudstaal PJ, et al. Genome-wide association study of vascular dementia. *Stroke*. 2012;43:315–319. doi: 10.1161/STROKEAHA.111.628768.
237. Anstey KJ, von Sanden C, Salim A, O’Kearney R. Smoking as a risk factor for dementia and cognitive decline: a meta-analysis of prospective studies. *Am J Epidemiol*. 2007;166:367–378. doi: 10.1093/aje/kwm116.
238. Rusanen M, Kivipelto M, Quesenberry CP Jr, Zhou J, Whitmer RA. Heavy smoking in midlife and long-term risk of Alzheimer disease and vascular dementia. *Arch Intern Med*. 2011;171:333–339. doi: 10.1001/archinternmed.2010.393.
239. Ngandu T, Lehtisalo J, Solomon A, et al. A 2 year multidomain intervention of diet, exercise, cognitive training, and vascular risk monitoring versus control to prevent cognitive decline in at-risk elderly people (FINGER): a randomised controlled trial. *Lancet*. 2015;385:2255–2263. doi: 10.1016/S0140-6736(15)60461-5.
240. Aarsland D, Sardahaee FS, Anderssen S, Ballard C; Alzheimer’s Society Systematic Review Group. Is physical activity a potential preventive factor for vascular dementia? A systematic review. *Aging Ment Health*. 2010;14:386–395. doi: 10.1080/13607860903586136.
241. Anstey KJ, Cherbuin N, Budge M, Young J. Body mass index in midlife and late-life as a risk factor for dementia: a meta-analysis of prospective studies. *Obes Rev*. 2011;12:e426–e437. doi: 10.1111/j.1467-789X.2010.00825.x.
242. Skoog I, Lernfelt B, Landahl S, Palmertz B, Andreasson LA, Nilsson L, Persson G, Odén A, Svanborg A. 15-year longitudinal study of blood pressure and dementia. *Lancet*. 1996;347:1141–1145.
243. Kivipelto M, Helkala EL, Hänninen T, Laakso MP, Hallikainen M, Alhainen K, Soininen H, Tuomilehto J, Nissinen A. Midlife vascular risk factors and late-life mild cognitive impairment: A population-based study. *Neurology*. 2001;56:1683–1689.
244. Iadecola C, Yaffe K, Biller J, Bratzke LC, Faraci FM, Gorelick PB, Gulati M, Kamel H, Knopman DS, Launer LJ, Saczynski JS, Seshadri S, Zeki Al Hazzouri A; American Heart Association Council on Hypertension; Council on Clinical Cardiology; Council on Cardiovascular Disease in the Young; Council on Cardiovascular and Stroke Nursing; Council on Quality of Care and Outcomes Research; and Stroke Council. Impact of hypertension on cognitive function: a scientific statement from the American Heart Association. *Hypertension*. 2016;68:e67–e94.
245. Cosentino F, Battista R, Scuteri A, De Sensi F, De Sisti L, Di Russo C, Camici GG, Volpe M. Impact of fasting glycemia and regional cerebral perfusion in diabetic subjects: a study with technetium-99m-ethyl cysteinate dimer single photon emission computed tomography. *Stroke*. 2009;40:306–308. doi: 10.1161/STROKEAHA.108.520627.
246. Panza F, Solfrizzi V, Logroscino G, Maggi S, Santamato A, Seripa D, Pilotto A. Current epidemiological approaches to the metabolic-cognitive syndrome. *J Alzheimers Dis*. 2012;30(suppl 2):S31–S75. doi: 10.3233/JAD-2012-111496.
247. Zietemann V, Wollenweber FA, Bayer-Karpinska A, Biessels GJ, Dichgans M. Peripheral glucose levels and cognitive outcome after ischemic stroke—Results from the Munich Stroke Cohort. *Eur Stroke J*. 2016;1:51–60.
248. Solomon A, Kåreholt I, Ngandu T, Wolozin B, Macdonald SW, Winblad B, Nissinen A, Tuomilehto J, Soininen H, Kivipelto M. Serum total cholesterol, statins and cognition in non-demented elderly. *Neurobiol Aging*. 2009;30:1006–1009. doi: 10.1016/j.neurobiolaging.2007.09.012.
249. Scarmeas N, Stern Y, Mayeux R, Manly JJ, Schupf N, Luchsinger JA. Mediterranean diet and mild cognitive impairment. *Arch Neurol*. 2009;66:216–225. doi: 10.1001/archneurol.2008.536.
250. Lautenschlager NT, Cox KL, Flicker L, Foster JK, van Bockxmeer FM, Xiao J, Greenop KR, Almeida OP. Effect of physical activity on cognitive function in older adults at risk for Alzheimer disease: a randomized trial. *JAMA*. 2008;300:1027–1037. doi: 10.1001/jama.300.9.1027.
251. Areosa SA, Grimley EV. Effect of the treatment of Type II diabetes mellitus on the development of cognitive impairment and dementia. *Cochrane Database Syst Rev*. 2002:CD003804.
252. Koekkoek PS, Kappelle LJ, van den Berg E, Rutten GE, Biessels GJ. Cognitive function in patients with diabetes mellitus: guidance for daily care. *Lancet Neurol*. 2015;14:329–340. doi: 10.1016/S1474-4422(14)70249-2.
253. Heart Protection Study Collaborative Group. MRC/BHF Heart Protection Study of cholesterol lowering with simvastatin in 20,536 high-risk individuals: a randomised placebo-controlled trial. *Lancet*. 2002;360:7–22. doi: 10.1016/S0140-6736(02)09327-3.
254. Shepherd J, Blauw GJ, Murphy MB, et al; PROSPER study group. PROSPER Study of Pravastatin in the Elderly at Risk. Pravastatin in elderly individuals at risk of vascular disease (PROSPER): a randomised controlled trial. *Lancet*. 2002;360:1623–1630.
255. PROGRESS Collaborative Group. Randomised trial of a perindopril-based blood-pressure-lowering regimen among 6,105 individuals with previous stroke or transient ischaemic attack. *Lancet*. 2001;358:1033–1041.
256. Dufouil C, Chalmers J, Coskun O, Besançon V, Bousser MG, Guillon P, MacMahon S, Mazoyer B, Neal B, Woodward M, Tzourio-Mazoyer N, Tzourio C; PROGRESS MRI Substudy Investigators. Effects of blood pressure lowering on cerebral white matter hyperintensities in patients with stroke: the PROGRESS (Perindopril Protection Against Recurrent Stroke Study) Magnetic Resonance Imaging Substudy. *Circulation*. 2005;112:1644–1650. doi: 10.1161/CIRCULATIONAHA.104.501163.
257. Matz K, Teuschl Y, Firlinger B, Dachenhausen A, Keindl M, Seyfang L, Tuomilehto J, Brainin M; ASPIS Study Group. Multidomain Lifestyle Interventions for the Prevention of Cognitive Decline After Ischemic Stroke: Randomized Trial. *Stroke*. 2015;46:2874–2880. doi: 10.1161/STROKEAHA.115.009992.
258. Mesulam M, Siddique T, Cohen B. Cholinergic denervation in a pure multi-infarct state: observations on CADASIL. *Neurology*. 2003;60:1183–1185.
259. Erkinjuntti T, Kurz A, Gauthier S, Bullock R, Lilienfeld S, Damaraju CV. Efficacy of galantamine in probable vascular dementia and Alzheimer’s disease combined with cerebrovascular disease: a randomised trial. *Lancet*. 2002;359:1283–1290. doi: 10.1016/S0140-6736(02)08267-3.
260. Auchus AP, Brashear HR, Salloway S, Korczyn AD, De Deyn PP, Gassmann-Mayer C; GAL-INT-26 Study Group. Galantamine treatment of vascular dementia: a randomized trial. *Neurology*. 2007;69:448–458. doi: 10.1212/01.wnl.0000266625.31615.f6.
261. Black S, Román GC, Geldmacher DS, Salloway S, Hecker J, Burns A, Perdomo C, Kumar D, Pratt R; Donepezil 307 Vascular Dementia Study Group. Efficacy and tolerability of donepezil in vascular dementia: positive results of a 24-week, multicenter, international, randomized, placebo-controlled clinical trial. *Stroke*. 2003;34:2323–2330. doi: 10.1161/01.STR.0000091396.95360.E1.
262. Wilkinson D, Doody R, Helme R, Taubman K, Mintzer J, Kertesz A, Pratt RD; Donepezil 308 Study Group. Donepezil in vascular dementia: a randomized, placebo-controlled study. *Neurology*. 2003;61:479–486.
263. Román GC, Salloway S, Black SE, Royall DR, Decarli C, Weiner MW, Moline M, Kumar D, Schindler R, Posner H. Randomized, placebo-controlled, clinical trial of donepezil in vascular dementia: differential effects by hippocampal size. *Stroke*. 2010;41:1213–1221. doi: 10.1161/STROKEAHA.109.570077.

264. Dichgans M, Markus HS, Salloway S, Verkkoniemi A, Moline M, Wang Q, Posner H, Chabriat HS. Donepezil in patients with subcortical vascular cognitive impairment: a randomised double-blind trial in CADASIL. *Lancet Neurol.* 2008;7:310–318. doi: 10.1016/S1474-4422(08)70046-2.
265. Ballard C, Sauter M, Scheltens P, He Y, Barkhof F, van Straaten EC, van der Flier WM, Hsu C, Wu S, Lane R. Efficacy, safety and tolerability of rivastigmine capsules in patients with probable vascular dementia: the VantagE study. *Curr Med Res Opin.* 2008;24:2561–2574. doi: 10.1185/03007990802328142.