

See discussions, stats, and author profiles for this publication at: <https://www.researchgate.net/publication/51213923>

# Salinity induced anatomical and morphological changes in *Chloris gayana* Kunth roots

Article in *BIOCELL* · April 2011

Source: PubMed

## CITATIONS

20

## READS

242

5 authors, including:



**Gabriel Céccoli**

National Scientific and Technical Research Council

10 PUBLICATIONS 78 CITATIONS

[SEE PROFILE](#)



**Leandro Ismael Ortega**

Centro de Investigaciones Agropecuarias (CIAP)-INTA. Córdoba, Argentina.

13 PUBLICATIONS 278 CITATIONS

[SEE PROFILE](#)



**Mariel G. Perreta**

Universidad Nacional del Litoral

43 PUBLICATIONS 209 CITATIONS

[SEE PROFILE](#)

Some of the authors of this publication are also working on these related projects:



Physiological tolerance mechanisms to abiotic stress in oil crops [View project](#)



Modelling the architecture and development of different genotypes of soybean (*Glycine max* (L.) Merrill) under different growth conditions and management practices. [View project](#)

## Salinity induced anatomical and morphological changes in *Chloris gayana* Kunth roots

GABRIEL CÉCCOLI<sup>\*1</sup>, JULIO C. RAMOS, <sup>1</sup>LEANDRO I. ORTEGA<sup>2</sup>, JUAN M. ACOSTA<sup>1</sup>, MARIEL G. PERRETA<sup>1</sup>

1. Cátedra de Morfología Vegetal. Facultad de Ciencias Agrarias. Instituto de Agrobiotecnología del Litoral (CONICET-UNL). Kreder 2805 (S3080HOF). Esperanza. Argentina.
2. Instituto de Fitopatología y Fisiología Vegetal (IFFIVE-INTA). Camino 60 cuadras km. 5.5 (X5020ICA). Córdoba. Argentina.

**Key words:** abiotic stress, tolerance, vascular tissue.

**ABSTRACT:** *Chloris gayana* Kunth is a grass species valuable as forage which was introduced into Argentina to be used as pasture in saline soils of subtropical and warm-temperate zones, given its good adaptability to drought, salinity and mild freezing. However, its tolerance varies according to the cultivar. In tetraploid cultivars, important reductions in yield have been observed. Here, a study of the variations produced on the root and stem system by salinity at different NaCl concentrations (0, 150 y 250 mM) was performed in the Boma cultivar, with the aim of determining the anatomical and morphological alterations produced by the salt excess. Plants cultivated with the highest level of salinity showed, in the whole, significant differences in the measured variables.

A diminution in absolute values of the variables and a major reduction in vascular tissue dimensions were observed, which suggests that the lack of tolerance to salt stress could be related to a deficient adaptation to absorb and transport water and nutrients from the roots.

### Introduction

Environmental factors influence both shoot and root growth. In the first case, they affect both bud activation and growth rate (Bell, 1986; Huber, 1997). Likewise lateral roots quantity, development and function are affected in the radical system (Glinski and Lipiec, 1990; Hauser *et al.*, 1995; Lynch, 1995). As consequence, plant architecture is modified and so, its capacity to explore and acquire resources from the medium (Dong and de Kroon, 1994).

Among abiotic stresses, drought and salinity cause a reduction in hydraulic conductivity in plants (Peyrano *et al.*, 1997; Steudle, 2000). The stress imposed by salts excess is an important restriction for the productive use of lands (Sanderson *et al.*, 1997) as it reduces plant growth and productivity at a soil conductivity over 4.5 dS/m (50 mM) (Muscolo *et al.*, 2003).

High salt content, especially chloride and sodium sulphates, affects plant growth by modifying their morphological, anatomical (Kalaji and Pietkiewicz, 1993; Huang and Redmann, 1995) and physiological traits (Muscolo *et al.*, 2003). Such growth impairment is due to osmotic effects and ionic imbalances affecting plant metabolism (Greenway and Munns, 1980).

It is known that under stressful conditions, root system biomass decreases, however, detailed studies about morphological and anatomical changes of roots challenged to different saline conditions are scarce (Córdoba *et al.*, 2001).

\*Address correspondence to: Gabriel CÉCCOLI.  
Cátedra de Morfología Vegetal. Facultad de Ciencias Agrarias.  
Instituto de Agrobiotecnología del Litoral (CONICET-UNL). Kreder  
2805 (S3080HOF) Esperanza. Argentina.  
E-mail: gabrielcnbj@yahoo.com.ar  
Received: May 21, 2010. Revised version received: February 24,  
2011. Accepted: March 14, 2011.

Salinity reduces root length and diameter (Neumann, 1995). Anatomically, it affects cell division and expansion processes (Kurth *et al.*, 1986; Zidan *et al.*, 1990), reduces the size of apical meristems, cortex and vascular cylinder. Additionally, stimulates exodermis and endodermis suberization (Reinhardt and Rost, 1995; Sanderson *et al.*, 1997; Ramos *et al.*, 2004) or the occurrence of atypical structures such as rhizodermis with phi-thickenings. (Degenhardt and Gimmler, 2000). The most common anatomical response to salinity is related to cell wall modifications. In cotton, an accelerated deposition of suberin in cells of the Casparian strip was observed (Wilson and Peterson, 1983; Reinhardt and Rost, 1995). Zhong and Lauchli (1993) found a rise in uronic acid along with lower cellulose content per unit of dry matter in cell walls of primary roots of cotton as effect of elevated salts levels. These alterations could be the cause of the change observed in the relative proportions of root tissues (Ramos *et al.*, 2004), which modify the shape of the organ and its function (Hauser *et al.*, 1995). At a molecular level it is known that several genes are expressed upon salt exposure and a number of proteins involved in salt-tolerance have been identified (Bohnert and Jensen, 1996).

*Chloris gayana* Kunth is a grass species valuable as forage which was introduced to Argentina to be used as pasture in saline soils of subtropical and warm-temperate zones (Burkart, 1969) given its good adaptability to drought, salinity and mild freezing (Bogdan, 1969; Duke, 1978). One of the known mechanisms of this species to cope with salinity is the presence of bi-cellular salt glands in its leaves which build up and excrete the sodium excess (Amarasinghe and Watson, 1989; Liphshitz and Waisel, 1974).

Due to the biological and agronomical importance of *C. gayana*, the study of its mechanisms of tolerance is of special importance (Kobayashi *et al.*, 2007). In this case, it exist a broad variability in function of cultivars. Significant reductions in the tetraploid cultivars productivities have been observed (Taleisnik *et al.*, 1997; de Luca *et al.*, 2001). Reduced yielding in these cultivars under salinity is manifested as a higher number of senescent leaves, a lower leaf area expansion and a minor number of stolons per plant (de Luca *et al.*, 2001).

Plant roots provide an ideal experimental system to investigate the effects of salinity on growth and other parameters given that, a) growth is restricted to a definite region, the millimetres immediately above the apical meristem, followed by a non-growing zone consisting of mature elongated cells located just some centimetres above the tip (Ishikawa and Evans, 1995);

b) root cells can be directly exposed to different NaCl concentrations by changing the root medium (Hilal *et al.*, 1998). For these reasons, we have chosen this system to deepen the knowledge of the responses of this halophyte growing under salt stress. In addition, there is almost no study addressing this kind of studies from a multivariate analysis perspective which allows correlating and discriminating the relevance of each variable involved.

Anatomical changes could compromise plant ability to conduct water and nutrients in high salinity. Ortega *et al.* (2006) observed a diminution of leaf protoxylem diameter in Rhodes grass leaves. Applying the law of Hagen-Poiseuille which relates water flux to the forth power of the xylem conduits radius, it can be deduced that a small variation in this value would imply a big increase in hydraulic resistance (Lewis and Bosse, 1995). A reduction in root hydraulic conductivity was observed by Peyrano *et al.* (1997) in tomato under salinity. Thus, we hypothesized that a reduction in vascular tissue dimensions more than any reduction in other tissue, would limit growth under salt stress conditions.

Thus, the aims of this work were determining, in tetraploid *C. gayana* roots, the morphological and anatomical alterations produced by salt excess (as NaCl) in the medium and whether they were correlated.

## Materials and Methods

### *Plant material*

Assays were carried out at the Juan Donnet Experimental Field of the Agronomic Sciences College of the Universidad Nacional del Litoral (Province of Santa Fe, Argentina). Seeds of the tetraploid cultivar "Boma" were germinated in a growing chamber at 26°C. After 48 h, plantlets were transferred to 4 L pots filled with perlite-vermiculite (3:1). Plants were watered daily with a half-strength Hoagland solution (Hoagland and Arnon, 1950). For plants subjected to experimental salinization, this solution was supplemented with NaCl in two final concentrations. Thus, three treatments were defined as: no NaCl added (control), 150mM NaCl (low NaCl concentration) and 250 mM NaCl (high NaCl concentration). Salinization began 5 days after seedling emergence watering with a 50mM NaCl supplement. From that time, daily 50mM increments were performed until the desired final NaCl concentration was reached. Salt concentration in the pots was monitored by conductivity measurement in the leaked excess solution.

After 40 days of treatments beginning, plants were harvested for morphological and anatomical studies. Roots were thoroughly washed and immediately immersed in FAA fixative solution (ethanol 50% [v/v], glacial acetic acid 5% [v/v], and formol 10% [v/v]) for 48 h; then they were stored in 70% (v/v) ethanol until use.

Segments from the absorption zone (1.5 cm from the tip) were sampled to perform permanent histological preparations (Berlin and Miksche, 1976). Shoots were oven-dried for 72 h at 90°C to obtain dry matter. After taking samples for morphological and anatomical studies, roots were oven-dried in the same manner.

#### *Morphological parameters*

Direct and derivative morphological variables were determined: shoot and root dry mass, total dry mass, shoot/root ratio, total root length according to Tennant (1975) and specific root length as the ratio between total root length and root dry mass.

#### *Anatomical parameters*

Digital images of the histological preparations were acquired using the Image-Pro Plus 7.0 Software Development Kit (SDK, © Media Cybernetics v. 6, Silver Spring CO., EEUU, 2000). In these, total area of each root cross-section, and areas corresponding to cortical parenchyma and vascular cylinder were measured. From these data, the ratio between vascular cylinder and cortical parenchyma areas was calculated.

#### *Statistical analysis*

An experimental design of completely randomized plots was run using between 9-12 plants per treatment. Four roots per plant were sampled for anatomical studies.

Data were analyzed through ANOVA using the Fisher least significant difference (LSD) test for comparisons of means (Sokal and Rohlf, 1971) using a 5% level of significance. The adjustment of errors to normal distribution was verified through the Shapiro-Wilks test and homoscedasticity was verified through the Levene test.

Given that all variables were measured on the same experimental units, multivariate analysis was applied in order to obtain an appropriate picture of the correlation and relative “weight” of each variable on the final results.

Thus, Principal Components Analysis, Biplot and Minimum Spanning Tree of the parameters were run to get a summary of the effects of salinity on the variables, as a whole.

Principal Components Analysis reduces the multivariate space to only two variables allowing, through these new variables (principal component 1 and 2), to discriminate those which influence the most the statistical results. It is a simplified way to explain the total variability of the set of samples.

Minimum Spanning Tree was plotted in the Biplot to show Principal Component Analysis or dimension reduction accuracy. Lines joining the experimental units

**TABLE 1.**

Effects of NaCl treatments on several growth parameters. Results are mean  $\pm$  SD; *n* was 9-12 per group. Different letters indicate significant differences ( $P < 0.05$ ). Last row indicates the least significant difference (LSD) value determined for each parameter.

Treatment	Shoot dry mass (g)	Root dry mass (g)	Total dry mass (g)	Shoot/root ratio	Total root length (m)	Specific root length (m.g <sup>-1</sup> )
no NaCl added	0.46 $\pm$ 0.15 a	0.14 $\pm$ 0.05 a	0.60 $\pm$ 0.19 a	3.27 $\pm$ 0.58 a	8.18 $\pm$ 2.01 a	60.74 $\pm$ 14.7 a
Low NaCl concentration	0.30 $\pm$ 0.13 b	0.10 $\pm$ 0.04 b	0.40 $\pm$ 0.17 b	3.04 $\pm$ 0.60 a	5.96 $\pm$ 1.80 b	64.29 $\pm$ 16.4 a
High NaCl concentration	0.31 $\pm$ 0.12 b	0.07 $\pm$ 0.03 b	0.38 $\pm$ 0.15 b	4.32 $\pm$ 0.88 b	4.75 $\pm$ 1.15 b	71.31 $\pm$ 18.7 a
LSD	0.12	0.04	0.15	0.64	1.47	0.67

without crossing each other in the Biplot indicate a good dimension reduction, therefore a good explanation of the multivariate reality. Cofenetic correlation coefficient quantifies how good the dimension reduction through Principal Component Analysis was.

Statistical analyses were run using the InfoStat Professional (v. p2, Group InfoStat, 2006) software program.

## Results

### *Morphological parameters*

*C. gayana* 'Boma' biomass accumulation was reduced by salinity as seen from the significant lower values of shoot dry mass, root dry mass and total dry mass in low NaCl concentration and high NaCl concentra-

tion respect to no NaCl added (Table 1).

Total root length was notably reduced upon exposure to salt but, as with shoot dry mass, root dry mass and total dry mass did not show significant differences between low NaCl concentration and high NaCl concentration, despite the lower average value in high NaCl concentration.

When the effects were expressed as percentage of control (no NaCl added) shoot dry mass, root dry mass and total dry mass displayed diminishing values as salinity level increased but without statistical significance (Table 2). On the other side, shoot/root ratio decreased in low NaCl concentration but rose to about a significant 32% in high NaCl concentration reflecting the higher diminution of root dry mass against shoot dry mass upon the highest salinity.

On respect of specific root length, there were no

**TABLE 2.**

Changes induced by salinity in morphological parameters values. Results are expressed as percentages of control plants. Different letters indicate significant differences ( $P < 0.05$ ;  $n = 9-12$ )

Treatment	shoot dry mass	root dry mass	total dry mass	shot/root ratio	total length	specific length
Low NaCl concentration	-34.78 a	-28.57 a	-33.33 a	-7.03 a	-27.14 a	+5.84 a
High NaCl concentration	-32.61 a	-50.00 a	-36.67 a	+32.11 b	-41.93 a	+17.40 a

**TABLE 3.**

Salinity-induced effects cross-sectional total root area, vascular cylinder; cortical parenchyma and vascular cylinder/cortical parenchyma ratio. Results are means  $\pm$  SD;  $n$  was 9-12 per group. Different letters indicate significant differences ( $P < 0.05$ ). Last row indicates the least significant difference (LSD) value determined for each parameter.

Treatment	Total root area (mm <sup>2</sup> )	Vascular cylinder (mm <sup>2</sup> )	Cortical parenchyma (mm <sup>2</sup> )	Vascular cylinder/cortical parenchyma
No NaCl added	0.59 $\pm$ 0.17 a	0.10 $\pm$ 0.03 a	0.42 $\pm$ 0.14 a	0.25 $\pm$ 0.06 a
Low NaCl concentration	0.53 $\pm$ 0.14 b	0.08 $\pm$ 0.02 b	0.39 $\pm$ 0.11 ab	0.20 $\pm$ 0.06 b
High NaCl concentration	0.46 $\pm$ 0.16 b	0.06 $\pm$ 0.02 c	0.34 $\pm$ 0.14 b	0.18 $\pm$ 0.05 b
LSD	0.07	0.01	0.06	0.03

significant differences between treatments; although a mild increase could be observed as salinity level increased (Table 2).

#### *Anatomical parameters*

Root cross-sectional area, sampled on about 1.5 cm from root apex, decreased as salt concentration increased (Table 3, Fig. 1). Although in absolute figures salt treatments were equivalent on this parameter, significant differences were detected between the relative percentages of diminution on respect to no NaCl added.

On the contrary, cross-sectional area of the vascular cylinder showed significant differences between all treatments (Table 3) decreasing from control to high NaCl concentration.

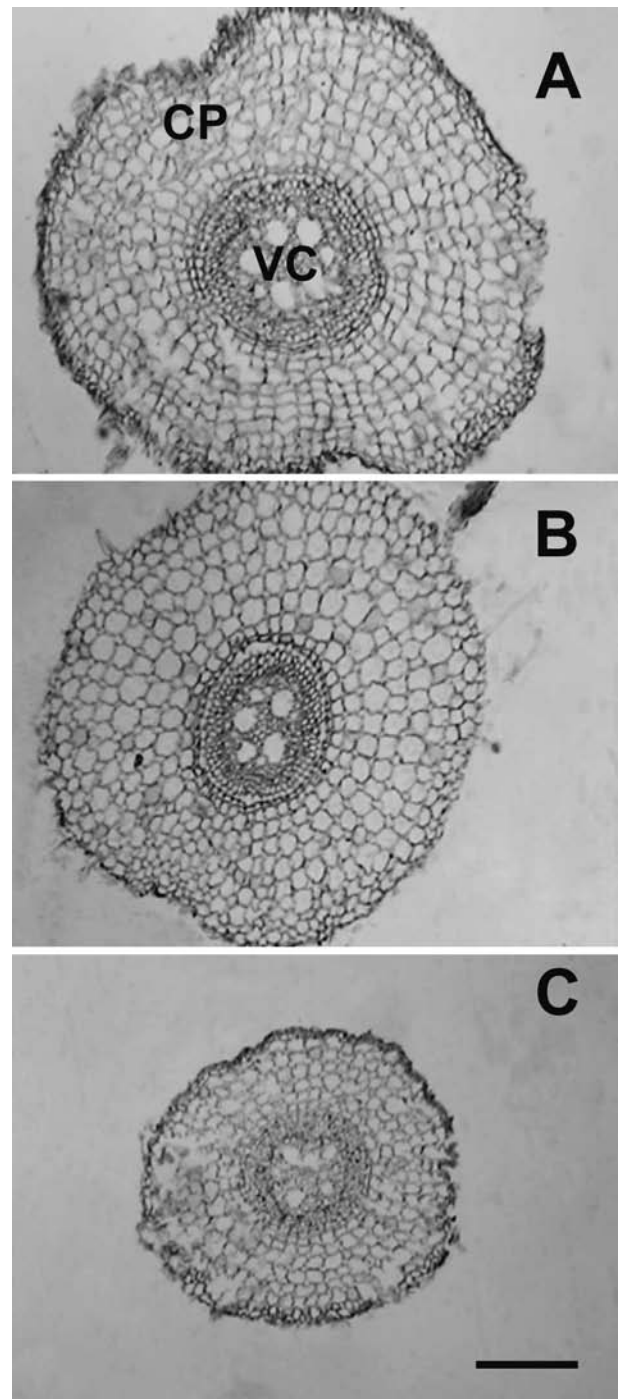
On regard to the parenchyma, only the highest salt level was significantly different to control. Low NaCl concentration was not different to either of the other treatments.

The vascular cylinder/cortical parenchyma ratio was affected by salinity as both levels of NaCl were different from no NaCl added (control plants). However, despite of the decreasing tendency, no differences were detected between salinity levels in absolute values (Table 3). In percentage values, there was a reduction in the vascular cylinder/cortical parenchyma ratio of a 20% and 28% for low NaCl concentration and high NaCl concentration respectively, reflecting the greater reduction for vascular cylinder compared to cortical parenchyma in the same treatments, (Table 4). This would indicate that the reduction in vascular cylinder and cortical parenchyma cross-sectional area are equivalent and proportional as salinity increases, at least at the sensibility of the experimental system of this study.

#### *Multivariate analysis*

A high cofenetic correlation coefficient (0.99) indicated a good projection quality of the observations in the plane of the selected components. The Principal Components explained about 89.4% of the total variation. Principal Component 1 explained a 74.6% of total variation and discriminated plants according to the assayed salinity levels. As it can be seen on Figure 2, control plants tended to cluster to the right, low NaCl concentration ones to the middle and high NaCl concentration to the left of the graph.

Considering Principal Component 1, there was no prevalence of any variable: all of them clustered around an eigenvalue of 2.5. Shoot dry mass and total length



**FIGURE 1.** Effects of salinity on anatomical parameters. Representative cross-sections of permanent microscopic preparations of *Chloris gayana* roots. A: control roots; B: root under 150 mM NaCl (low NaCl concentration); C: root under 250 mM NaCl (high NaCl concentration). VC: vascular cylinder; CP: cortical parenchyma. Bar represents 200  $\mu$ m.

were highly correlated. On the other hand, the same situation was observed between total area and cortical parenchyma (Fig. 2). However, no correlation was detected between the former two and these later ones.

Considering Principal Component 2, shoot dry mass and total area are the variables which weighted the most, however as this Principal Component did not discriminate observations between treatments, and the variability explained is just about 16%, it was not considered for the analysis.

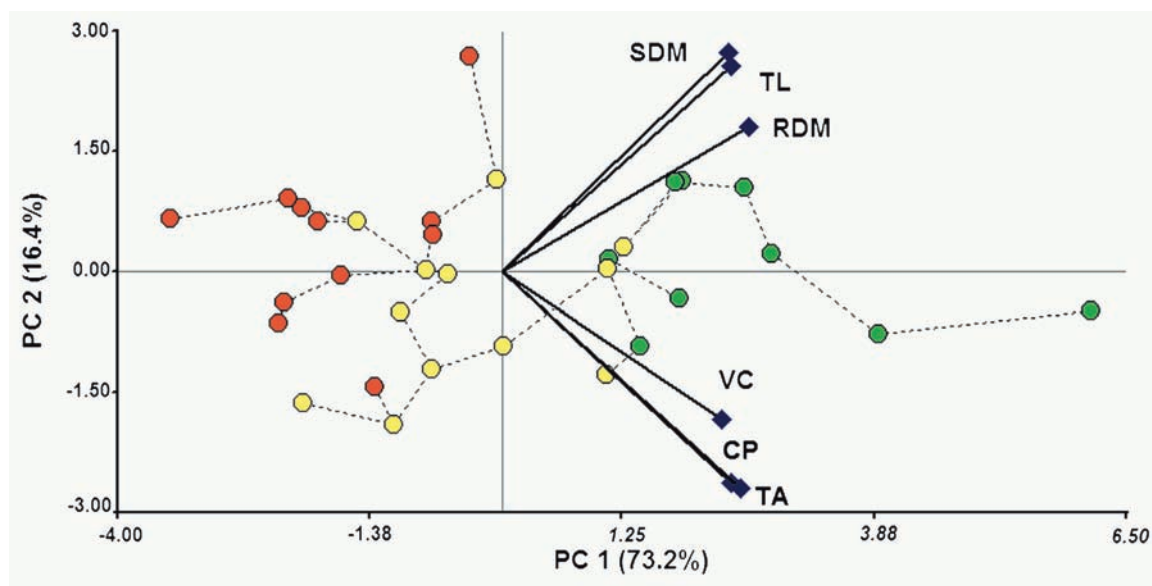
## Discussion

According to their susceptibility to soil salt concentration, plants can be classified as halophytes or glycophytes (Hester *et al.*, 2001). The former are capable of absorbing and accumulating high salt levels in tissues through ion inclusion in vacuoles, synthesis of osmotic compounds (Gorham *et al.*, 1985) which protect against dehydration (Shinozaki and Yamaguchi-Shinozaki, 1999) and the existence of excretory glands

**TABLE 4.**

Changes induced by salinity in anatomical parameters values. Results are expressed as percentages of control plants. Different letters show significant differences ( $P < 0.05$ ;  $n = 9-12$ ).

Treatment	Total root area	Vascular cylinder	Cortical parenchyma	Vascular cylinder/cortical parenchyma
Low NaCl concentration	-10.17 a	-20.00 a	-7.14 a	-20.00 a
High NaCl concentration	-22.03 b	-40.00 b	-19.05 b	-28.00 a



**FIGURE 2.** Principal Components (PC1 and PC2), Biplot graph (variables and observations) and Minimum Spanning Tree of the parameters (broken line between circles). Green circles: no NaCl added plants, yellow: low NaCl concentration plants, red: high NaCl concentration plants. SDM: shot dry mass, TL: total root length, RDM: root dry mass, VC: vascular cylinder area of cross-sectional root, CP: cortical parenchyma area of cross-sectional root, TA: total area of cross-sectional root.

located on the leaf surface (Luna *et al.*, 2002; Kobayashi *et al.*, 2007). On the contrary, glycophytes can not avoid ion entrance to tissues and experience the adverse effects of poisonous ions accumulation (Greenway and Munns, 1980). Only a few can avoid ion intake into tissues by osmotic adjustment, but in both kind of plants, the highest level of salinity tolerated is very low (Yeo, 1983). A gradient of salinity tolerance exists between both plant categories and the morpho-physiologic response depends on the particular species (Alshmmmary *et al.*, 2004).

As it has been seen in this work *C. gayana* biomass accumulation was significantly affected by salinity. Although growth continues even at high salt concentrations, shoot dry mass was significantly reduced (Table 1). Same response was observed by Muscolo *et al.* (2003) in kikuyu grass (*Pennisetum clandestinum* Hochst).

In coincidence with other studies in which root biomass rarely overcome shoot biomass (Agren and Ingestad, 1987; Baxter *et al.*, 1994; Canham *et al.*, 1996; Bolinder *et al.*, 1997; Ryser *et al.*, 1997; McConnaughay and Coleman, 1998), shoot biomass always over passed root biomass, in absolute figures (Table 1). The significantly higher shoot/root ratio at the highest salt level indicated that the accumulated dry mass in roots was more affected than the one in the shoot (Table 2). This reduction in shoot/root ratio would reflect that the mechanisms controlling shoot growth are less affected by salinity than those which control root growth. This pose an interesting trait to study whether this factor is one of the determinants of the higher sensibility to saline stress reported for *C. gayana* tetraploid cultivars (Taleisnik *et al.*, 1997; de Luca *et al.*, 2001; Luna *et al.*, 2002).

On the contrary to tetraploid cultivars, diploid ones possess a major tolerance conferred by resistance mechanisms (Guggenheim and Waisel, 1977; Russell, 1976).

Ortega and Taleisnik (2003) observed a diminution in elongation leaf rates of *C. gayana*, partially compensated with a longer elongation time. Similar effects were observed by Beemster y Masle (1996) in wheat growing in soils with high resistance to penetration. Total lenght decreased sensibly as medium salinity increased as seen before (Neumann, 1995). However, specific lenght was not reduced. In percentage, there was a tendency to a higher specific lenght in high NaCl concentration plants. This would show certain adaptability in this tetraploid cultivar (probably a longer elongation time) which would not be enough to compensate the negative effects of the saline environment. This adaptation (higher specific lenght) was also described by Miller

(1986), who pointed out that in higher plants exist mechanisms to cope with different stressful situations, namely root system slendering and expansion, changes in shoot/root ratio and an additional development of adventitial roots. Similar observations were done by Zwieniecki and Newton (1995), in plant roots growing under mechanical stress.

As some morphological parameters were negatively affected by salinity, some anatomical variables were diminished as well. Cortical parenchyma and vascular cylinder were reduced (Table 3), an effect that was observed in cotton (Reinhardt and Rost, 1995), perennial forages (Sanderson *et al.*, 1997) and *Pappophorum philippianum* Parodi (Ramos *et al.*, 2004). However, in our case the reduction was greater in the transport tissue (Table 4) supporting our hypothesis about the relevance of this effect on the ability of the plant to conduct water and nutrients in high salinity. This effect was previously observed in sorghum (Baum *et al.*, 2000) and rhodesgrass (Ortega *et al.*, 2006) leaves. In the latter, the leaf protoxylem diameter was a 65% lower in salinized plants being a probable limiting factor to hydraulic conductivity and therefore to tissue expansion. Xylem elements diameter and characteristics of the terminal cell walls are the main determinants of xylem hydraulic resistance (Tyree and Sperry, 1989; Davis *et al.*, 1999; Hacke and Sperry, 2001). Peyrano *et al.* (1997) observed a reduction in root hydraulic conductivity in tomato under salinity. However, Principal Component Analysis revealed that anatomical and morphological parameters were not correlated (Fig. 2). In fact, on the contrary to our expectations, the significant reduction in vascular cylinder did not have the same effect either on shoot nor root development (shoot dry mass and total root lenght). The positive correlation between the latter variables was some higher than the one between shoot dry mass and root dry mass (Fig. 2). The apparent "privilege" of shoot dry mass over root dry mass indicated by the higher shoot/root ratio would make soil exploration difficult for salinized plants.

It must be noted that anatomical observations were performed on the absorption zone which is just a small part of the entire root system. The obtained results may not reflect the salt-induced disturbances at organ level.

In conclusion, *C. gayana* Kunth tetraploid cultivar Boma showed a salinity-induced reduction in almost all morphological and anatomical variables recorded in this study. The lower shoot/root ratio would indicate a higher sensibility of root growth machinery against saline stress conditions. The increase in specific root lenght would not be enough to compensate the susceptibility of this cultivar to salinity.



In salinity, vascular cylinder/cortical parenchyma ratio was reduced, evidencing a low tolerance of this tetraploid cultivar to saline environments due to a lower capacity to conduct water and nutrients (vascular tissues were more affected than any other ones). Despite of this, significant differences were not detected in either assayed salinity levels on regard of this variable. Therefore, the existence of tolerance mechanisms to high salinity could not be ruled out.

## Acknowledgements

We acknowledge the support of Universidad Nacional del Litoral through granting G.C. a Research Introduction Scholarship (Cientibeca) and supplying the infrastructure and equipments needed to carry out this work. We would like to thank Dr. Edith Taleisnik for kindly providing *C. gayana* Boma seeds and helpful feedbacks about the manuscript. We also would like to thank Dr. Abelardo Vegetti for support and useful advices to this work.

## References

- Agren GI, Ingestad G (1987). Root: shoot ratio as a balance between nitrogen productivity and photosynthesis. *Plant, Cell and Environment* **10**: 579-586.
- Alshammary SF, Qian YL, Wallner SJ (2004). Growth response of four turf grass species. *Agricultural Water Management* **66**: 97-111.
- Amarasinghe V, Watson L (1989). Variation in salt secretory activity of microhairs in grasses. *Australian Journal of Plant Physiology* **16**: 219-229.
- Baum SF, Tran PN, Silk WK (2000). Effects of salinity on xylem structure and water use in growing leaves of sorghum. *New Phytologist* **146**: 119-127.
- Baxter R, Ashenden TW, Sparks TH, Farar JF (1994). Effects of elevated carbon-dioxide on 3 montane grass species. 1. Grow and dry-matter partitioning. *Journal of Experimental Botany* **45**: 305-315.
- Beemster GTS, Masle J (1996). Effects of soil resistance to root penetration on leaf expansion in wheat (*Triticum estivum* L.): composition, number and size of epidermal cells in mature blades. *Journal of Experimental Botany* **47**: 1651-1662.
- Bell AD (1986). The simulation of branching patterns in modular organisms. *Philosophical Transactions of the Royal Society B* **313**: 143-159.
- Berlyn GP, Micksche P (1976). *Botanical microtechnique and cytochemistry*. Iowa State University Press, Ames, IA.
- Bohnert HJ, Jensen RG (1996). Strategies for engineering water stress tolerance in plants. *Trends in Biotechnology* **14**: 89-97.
- Bolinder MA, Angers DA, Dubuc JP (1997). Estimating shoot to root ratios and annual carbon inputs in soil for cereal crops. *Agriculture, Ecosystems and Environment* **63**: 61-66.
- Bogdan A (1969). Rhodes grass. *Herbage Abstracts* **39**: 1-13.
- Burkart A (1969). Flora ilustrada de Entre Ríos Tomo IV, II: Gramíneas. Ediciones INTA, Buenos Aires.
- Canham CD, Berkowitz AR, Kelly VR, Lovet GM, Ollinger SV, Schnurr J (1996). Biomass allocation and multiple resource limitation in tree seedlings. *Canadian Journal of Forest Research* **26**: 521-1530.
- Córdoba A, García Seffino L, Moreno H, Arias C, Grunberg K, Zenoff A (2001). Characterization of the effect of high salinity on roots of *Chloris gayana* Kunth: carbohydrate and lipid accumulation and growth. *Grass and Forage Science* **56**: 162-168.
- Davis SD, Sperry JS, Hacke UG (1999). The relationship between xylem conduit diameter and cavitation caused by freezing. *American Journal of Botany* **86**: 1367-1372.
- Degenhardt B, Gimmler H (2000). Cell wall adaptations to multiple environment stresses in maize root. *Journal of Experimental Botany* **51**: 595-603.
- de Luca M, García Seffino L, Grunberg K, Salgado M, Córdoba A, Luna C, Ortega L, Rodríguez A, Castagnaro A, Taleisnik E (2001). Physiological causes for decreased productivity under high salinity in Boma, a tetraploid *Chloris gayana* cultivar. *Australian Journal of Agricultural Research* **52**: 903-910.
- Dong M, de Kroon H (1994). Plasticity in morphology and biomass allocation in *Cynodon dactylon*, a grass species forming stolons and rhizomes. *Oikos* **70**: 99-106.
- Duke JA (1978). The quest for tolerant germplasm. In: ASA Special Symposium, vol. 32, p. 1-61. Madison, WI.
- Ginski J, Lipiec J (1990). *Physical condition and plant root*. CRC Press, Florida.
- Gorham J, Wyn Jones RG, McDonnell E (1985). Some mechanisms of salt tolerance in crop plants. *Plant Soil* **89**: 15-40.
- Greenway H, Munns R (1980). Mechanism of salt tolerance in non-halophytes. *Annual Review of Plant Physiology* **31**: 149-190.
- Guggenheim J, Waisel Y (1977). Effects of salinity, temperature and nitrogen fertilization on growth and composition of Rhodes grass (*Chloris gayana* Kunth). *Plant and Soil* **47**: 431-440.
- Hacke UG, Sperry SJS (2001). Functional and ecological xylem anatomy. *Perspectives in Plant Ecology, Evolution and Systematics* **4**: 97-115.
- Hauser MT, Morikami A, Benfey PN (1995). Conditional root expansion mutants of *Arabidopsis*. *Development* **121**: 1237-1252.
- Hester MW, Mendelssohn IA, McKee KL (2001). Species and population variation to salinity stress in *Panicum hemitomon*, *Spartina patens* and *Spartina alterniflora*: morphological and physiological constraints. *Environmental and Experimental Botany* **46**: 277-297.
- Hilal M, Zenoff AM, Ponessa G, Moreno H, Massa EM (1998). Saline stress alters the temporal patterns of xylem differentiation and alternative oxidase expression in developing soybean roots. *Plant Physiology* **117**: 695-701.
- Hoagland DR, Arnon DI (1950). The water-culture method for growing plants without soil. *California Agriculture Experimental Station, Circular* 347.
- Huang J, Redman RE (1995). Response of growth, morphology and anatomy to salinity and calcium supply in cultivated and wild barley. *Canadian Journal of Botany* **73**: 1859-1866.
- Huber H (1997). *Architectural plasticity of stoloniferous and erect herbs in response to light climate*. University of Utrecht Press, Utrecht.
- InfoStat (2006). InfoStat/Profesional version p2. Grupo InfoStat/FCA. Universidad Nacional de Córdoba. Ed. Brujas, Córdoba, Argentina.

- Ishikawa H, Evans ML (1995). Specialized zones of development in roots. *Plant Physiology* **109**: 725-727.
- Kalasi MH, Pietkiewcs S (1993). Salinity effects on plant growth and other physiological processes. *Acta Physiologiae Plantarum* **15**: 89-124.
- Kobayashi H, Masaoka Y, Takahashi Y, Ide Y, Sato S (2007). Ability of salt glands in Rhodes Grass (*Chloris gayana* Kunth) to secrete Na<sup>+</sup> and K<sup>+</sup>. *Soil Science and Plant Nutrition* **53**: 764-771.
- Kurth E, Cramer GR, Láuchli A, Epstein E (1986). Effects of NaCl and CaCl<sub>2</sub> on cell enlargement and cell production in cotton root. *Plant Physiology* **82**: 1102-1106.
- Lewis AM, Boose ER (1995). Estimating volume flow rates through xylem conduits. *American Journal of Botany* **82** : 1112-1116.
- Lipshchitz N, Waisel Y (1974). Existence of salt glands in various genera of the Gramineae. *New Phytologist* **73** : 507-513.
- Luna C, de Luca M, Taleisnik E (2002). Physiological causes for decreased productivity under high salinity in Boma, a tetraploid *Chloris gayana* cultivar. II. Oxidative stress. *Australian Journal Agricultural Research* **53**: 663-669.
- Lynch J (1995). Root architecture and plant productivity. *Plant Physiology* **109**: 7-13.
- McConnaughay KDM, Coleman JS (1998). Can plants track changes in nutrient availability via changes in biomass partitioning? *Plant and Soil* **202**: 201-209.
- Miller D (1986). Root system in relation to stress tolerance. *Hort Science* **21**: 963-970.
- Musco A, Panuccio MR, Sidari M (2003). Effects of salinity on growth, carbohydrate metabolism and nutritive properties of kikuyu grass (*Pennisetum clandestinum* Hochst). *Plant Science* **164**: 1103-1110.
- Neumann P (1995). Inhibition of Root Growth by Salinity Stress: Toxicity or an Adaptive Biophysical Response. In: Structure and function of roots (Baluska F, Ciamporová M, Gasparikova MO, Barlow PW, eds.), p. 299-304. Academic Kluwer Publishers, Dordrecht.
- Ortega L, Taleisnik E (2003). Elongation growth in leaf blades of *Chloris gayana* under saline conditions. *Journal of Plant Physiology* **160**: 517-522.
- Ortega L, Fry SC, Taleisnik, E (2006). Why are *Chloris gayana* leaves shorter in salt-affected plants? Analyses in the elongation zone. *Journal of experimental Botany* **57**: 3945-3952.
- Peyrano G, Taleisnik E, Quiroga M, de Forchetti SM, Tigier H (1997). Salinity effects on hydraulic conductance, lignin and peroxidase activity in tomato roots. *Plant Physiology and Biochemistry* **35**: 387-393.
- Ramos J, Perreta MG, Tivano JC, Vegetti AC (2004). Variaciones anatómicas en la raíz de *Pappophorum philippianum* inducidas por salinidad. *Phyton (USA)*: 103-109.
- Reinhardt DH, Rost TL (1995). Salinity accelerates endodermal development and induces an exodermis in cotton seedlings roots. *Environmental and experimental Botany* **35**: 563-574.
- Russell JS (1976). Comparative salt tolerance of some tropical and temperate legumes and tropical grasses. *Australian Journal of Experimental Agriculture and Animal Husbandry* **16**: 103-109.
- Ryser P, Berduyn B, Lambers H (1997). Phosphorus allocation and utilization in three grass species with contrasting response to N and P supply. *New Phytologist* **137**: 293-302.
- Sanderson M, Stair D, Hussey M (1997). Physiological and morphological responses of perennial forages to stress. *Advances in Agronomy* **59**: 171-224.
- Shinozaki K, Yamaguchi-Shinozaki K (1999). *Molecular responses to cold, drought, heat and salt stress in higher plants*. RG Landes Company, Austin.
- Sokal RR, Rohlf FJ (1971). *Biometry*. 2nd. ed. WH Freeman, San Francisco.
- Stedle E (2000). Water uptake by roots: effects of water deficit. *Journal of Experimental Botany* **51**: 1531-1542.
- Taleisnik E, Peyrano G, Arias C (1997). Response of *Chloris gayana* cultivars to salinity. Germination and early vegetative growth. *Tropical grassland* **31**: 232-240.
- Tennant D (1975). A test modified line intersect method of estimating root length. *Journal of Ecology* **63**: 995-1101.
- Tyree MT, Sperry, JS (1989). Vulnerability of xylem to cavitation and embolism. *Annual Review of Plant Physiology and Plant Molecular Biology* **40**: 19-36.
- Wilson CA, Peterson CA (1983). Chemical composition of the epidermal, hypodermal, endodermal and intervening cortical cell wall of various plant roots. *Annals of Botany* **51**: 759-769.
- Yeo AR (1983). Salinity resistance: physiologies and prices. *Physiologia Plantarum* **58**: 214-222.
- Zidan I, Azaizah H, Neumann PM (1990). Does salinity reduce growth in maize root epidermal cells inhibiting their capacity for cell wall acidification? *Plant Physiology* **93**: 7-11.
- Zhong H, Lauchli, A (1993). Changes of cell wall composition and polymer size in primary roots of cotton seedlings under high salinity. *Journal of experimental botany* **44**: 773-778.
- Zwieniecki M, Newton M (1995). Roots growing in rock fissures: their morphological adaptation. *Plant and Soil* **172**: 181-187.

