

We are IntechOpen, the world's leading publisher of Open Access books Built by scientists, for scientists

5,000

Open access books available

125,000

International authors and editors

140M

Downloads

Our authors are among the

154

Countries delivered to

TOP 1%

most cited scientists

12.2%

Contributors from top 500 universities



WEB OF SCIENCE™

Selection of our books indexed in the Book Citation Index
in Web of Science™ Core Collection (BKCI)

Interested in publishing with us?
Contact book.department@intechopen.com

Numbers displayed above are based on latest data collected.
For more information visit www.intechopen.com



Earth-Rock Dams' Breach Modelling

Qiming Zhong, Yibo Shan and Jiaxin Liu

Abstract

Simulation of dam breach process has significant influence on the evaluation of consequence of dam breach flood. In this study, research progresses on the numerical modeling of earth-rock dams' breach process are summarized, especially the latest research results of the author's research team in recent years. However, there still has a considerable gap in the versatility of computer software and visualization technology of dam breaching process. It is suggested that more efforts should be made in the future to study the detailed physically based numerical model for core dam and concrete face rockfill dam; further, more attention should be paid to the application of visualization technology in dam breach process simulation. Finally, the universal and friendly visualization computer software that can accurately simulate the dam failure process and flood routing for earth-rock dams is sorely needed.

Keywords: earth-rock dam, numerical model, computer software, research progress

1. Introduction

China has nearly 100,000 reservoir dams, of which earth-rock dams account for more than 95% [1, 2]. Most of these reservoir dams were built in the 1950s and 1970s. Due to economic and technical conditions at that time, the problem of dangerous reservoirs in China was outstanding [3]. According to statistics [4], from 1954 to 2018, 3541 reservoir dams broke in China. The "75.8" flood occurred in Henan in 1975, which led to the collapse of 2 large reservoirs in Banqiao and Shimantan (**Figures 1** and **2**), 2 medium-sized reservoirs in Tiangang and Zhugou, and 58 small reservoirs, causing heavy casualties and property losses [5]. In the twenty-first century, with the improvement of the dam safety management level and the comprehensive development of the reservoir's risk elimination and reinforcement, the number of dam breaks has been significantly reduced, but due to the frequent occurrence of extreme weather events, dams' breaching still occur frequently. On July 19, 2018, the Zenglongchang Reservoir in Inner Mongolia and the Sheyuegou Reservoir in Xinjiang on August 1, 2018, successively dams' breaching [4] (**Figures 3** and **4**).

Therefore, it is necessary to establish a mathematical model and numerical calculation method that reasonably simulates the process of overtopping and seepage failure collapse, improves the prediction accuracy of the flood flow process of earth-rock dam collapse, and provides theoretical and technical support for the



Figure 1.
Final breach of Banqiao dam.



Figure 2.
Final breach of Shimantan dam.



Figure 3.
Final breach of Zenglongchang dam.



Figure 4.
Final breach of Sheyuegou dam.

evaluation of the consequences of dam collapse and the preparation of emergency plans. This article will briefly introduce the research progresses on the mechanisms and numerical models of earth-rock dams' breaching, especially the latest research results of the author's research team in recent years, and make suggestions for future research.

2. Study on mathematical model of earth-rock dam break

The mathematical model of earth-rock dams' breaching is generally divided into three categories [6]: The first category is the parameter model. Most of these models are based on statistical analysis of dam-break case data, and empirical formulas are used to calculate and obtain dam-break-related parameters. Although most models cannot consider the erosion characteristics of damming materials, but the parameter model formula is simple and fast to calculate and is also often used for rapid evaluation of the consequences of dams' breaching. The second category is a simplified mathematical model based on the mechanism of failure. It is generally assumed that the shape of the fractured breach (rectangular, inverted trapezoidal, triangular, etc.) remains unchanged during the dams' breaching. The method based on the flow shear stress and the critical shear stress of the dam material or the erosion formula of the dam material is used to calculate the breach development process; the weir flow is used (overtopping dam failure) or pore flow (seepage failure dam breaching) formulas are used to calculate the breach flow. The stability analysis of the breach slope mostly uses the limit equilibrium method; generally, the numerical calculation method based on time step iteration is used to simulate the breach development process and the breach flow process. The advantage of this type of model is that it considers the failure mechanism of earth-rock dams, and the calculation speed is relatively fast, which is the most widely used in the numerical simulation of earth-rock dams dam breaching process. The third category is a detailed mathematical model based on the failure mechanism. In recent years, a series of researches on one-dimensional, average two-dimensional, and three-dimensional mathematical models based on the hydrodynamic dam material erosion equation have made significant progress, which can simulate the dams' breaching process of earth-rock dams in more detail. In order to deal with the diffuse overtopping flow composed of discontinuous mixed flow states, shock wave capturing methods such as approximate Riemann solution method and total variation declining (TVD) method are generally used, and finite volume method, level set method, and smooth particle hydrodynamic method are used to solve the

governing equation. This type of model is a fast-developing simulation method in recent years, but it can only be used for the simulation of the overtopping collapse process of homogeneous dams or landslide dams. It has not been used to simulate the process of seepage and failure of earth-rock dams and the simulation of the process of overtopping failure of other types of earth-rock dams [6].

2.1 Parametric model

In 1977, Kirkpatrick [7] proposed the first empirical formula for predicting peak outflow Q_p , and then scholars from various countries proposed a series of models. With the continuous enrichment of dam failure case investigation data and the deepening of research, the dam failure parameter model has gradually evolved from the single-parameter model to a multi-parameter model, and the output results have increased from the original peak outflow of the breach to the final average width of the breach and the duration of the dam and can consider the shape of the dam body, reservoir capacity, dam material characteristics, etc. The peak outflow rate of breach is very important for the evaluation of the consequences of dam breaching. Therefore, domestic and foreign scholars have studied more. The commonly used parameter model of peak outflow rate is shown in **Table 1**.

In 1988, the US Bureau of Reclamation (USBR) [14] proposed the first empirical formula for predicting the final average width of the breach B_{ave} , and then scholars from various countries put forward a series of models. The commonly used parameter model of the final average width of the breach is shown in **Table 2**.

In 1984, MacDonald and Langridge-Monopolis [42] proposed the first empirical formula for predicting the duration of dam failure, and then scholars from various countries proposed a series of models. Commonly used dam-break duration parameter model is shown in **Table 3**.

Due to the difficulties in obtaining the dam-break duration, the relatively low accuracy of the data, and the small number of samples, the dam-break duration model has a large deviation in the calculation of individual cases.

In order to fully consider the dam type, dam breach mode, reservoir characteristics, and breach characteristics, the reservoir capacity (V_w) is above the bottom of the breach at the dam break, the water depth (h_w) above the bottom of the dam at the dam break (h_d), and the final depth of the rupture (h_b). For other parameters, the method of statistical regression is used to obtain the results of the peak flow of the breach, the final average width of the breach, and the duration of the dam breach. From the above statistics, it can be seen that the parameter model can simulate the dam-break parameters simply and quickly, which is an efficient and rapid evaluation method, but the parameter model cannot provide the dam-break flood flow process line.

2.2 Simplified mathematical model based on failure mechanism

In the 1960s, European and American scholars began to study a simplified mathematical model based on the mechanism of collapse based on hydraulics and sediment transport formulas. This model is also the most widely used mathematical model of earth-rock dams' breaching. In 1965, from the US Bureau of Reclamation, Cristofano [27] established the first mathematical model of homogeneous dam overtopping failure. Afterward, scholars from various countries proposed a series of mathematical models for simulating earth-rock dam collapse [6, 28]. The most widely used is the NWS BREACH model developed by Fread from the National Weather Service [29]. In recent years, the Nanjing Hydraulic Research Institute and China Institute of Water Resources and Hydropower Research have conducted

Model	Case number	Expression
Kirkpatrick (1977) [7]	19	$Q_p = 1.268(h_w + 0.3)^{2.5}$
Soil Conservation Service (1981) [8]	13	$Q_p = 16.6h_w^{1.85}$
Hagen (1982) [9]	6	$Q_p = 0.54(h_d S)^{0.5}$
Singh and Snorrason (1984) [10]	28	$Q_p = 13.4h_d^{1.89}$ or $Q_p = 1.776S^{0.47}$
MacDonald and Langridge-Monopolis (1984) [11]	23	$Q_p = 1.154(V_w h_w)^{0.412}$
Costa (1985) [12]	31	$Q_p = 0.981(h_d S)^{0.42}$
Evans (1986) [13]	29	$Q_p = 0.72V_w^{0.53}$
USBR (1988) [14]	21	$Q_p = 19.1h_w^{1.85}$
Froehlich (1995) [15]	22	$Q_p = 0.607V_w^{0.295}h_w^{1.24}$
Walder and O'Connor (1997) [16]	18	$Q_p = 0.031g^{0.5}V_w^{0.47}h_w^{0.15}h_b^{0.94}$
Xu and Zhang ¹ (2009) [17]	75	$Q_p = 0.175g^{0.5}V_w^{5/6}(h_d/h_r)^{0.199}(V_w^{1/3}/h_w)^{-1.274}e^{B_4}$
Pierce et al. (2010) [18]	87	$Q_p = 0.0176(Vh)^{0.606}$ or $Q_p = 0.038V^{0.475}h^{1.09}$
Thornton et al. (2011) [19]	38	$Q_p = 0.1202L^{1.7856}$ or $Q_p = 0.863V^{0.335}h_d^{1.833}W_{ave}^{-0.663}$ or $Q_p = 0.012V^{0.493}h_d^{1.205}L^{0.226}$
Lorenzo and Macchione (2014) [20]	14	$Q_p = 0.321g^{0.258}(0.07V_w)^{0.485}h_b^{0.802}$ (overtopping) $Q_p = 0.347g^{0.263}(0.07V_w)^{0.474}h_b^{-2.151}h_w^{2.992}$ (seepage failure)
Hooshyaripor et al. (2014) [21]	93	$Q_p = 0.0212V^{0.5429}h^{0.8713}$ or $Q_p = 0.0454V^{0.448}h^{1.156}$
Azimi et al. (2015) [22]	70	$Q_p = 0.0166(gV)^{0.5}h$
Froehlich ² (2016) [23]	41	$Q_p = 0.0175k_M k_H (gV_w h_w h_b^2 / W_{ave})^{0.5}$
Mei Shiang et al. (2018) [24]	154	$Q_p = V_w g^{0.5} h_w^{-0.5} (V_w^{1/3} / h_w)^{-1.58} (h_w / h_b)^{-0.76} (h_d / h_0)^{0.10} e^{-4.55}$ (homogeneous dam) $Q_p = V_w g^{0.5} h_w^{-0.5} (V_w^{1/3} / h_w)^{-1.51} (h_w / h_b)^{-1.09} (h_d / h_0)^{-0.12} e^{-3.61}$ (core-wall dam)

Q_p is the peak outflow of the breach; h_w is the water depth above the bottom of the breach when the dam breaks; h_d is the height of the dam; S is the reservoir capacity; V_w is the reservoir capacity above the bottom of the breach when the dam breaks; g is the gravity acceleration; h_b is the depth of the dam breaks; h_r is the reference dam height, take 15 m; V is the reservoir capacity at dam breaching; h is the water level at dam breaching; L is the length of the dam; W_{ave} is the average width of the dam; k_M and k_H are coefficients.

¹The expression of parameter B_4 is $B_4 = b_3 + b_4 + b_5$, for core-wall dam, concrete face rockfill dam or homogeneous dam, b_3 is taken as -0.503 , 0.591 , or -0.649 , respectively; for overtopping or seepage failure, b_4 is taken as -0.705 or -1.039 , respectively; for dam materials with high, medium, or low erosion rate, b_5 is taken as -0.007 , -0.375 , or -1.362 , respectively.

²For overtopping dam failure, $k_M = 1.85$; for seepage failure dam failure, $k_M = 1$; when $h_b \leq 6.1$ m, $k_H = 1$; when $h_b > 6.1$ m, $k_H = (h_b/6.1)^{1/8}$.

Table 1.
 Parameter model of peak outflow rate.

systematic research work on the mathematical model of earth-rock dams' breaching, establishing NHRI-DB series and DB-IWHR series dam-break mathematical models, respectively. The commonly used simplified mathematical model of earth-rock dam breaching is shown in **Table 4**.

It can be seen from the above analysis that this type of model is mainly aimed at the two failure modes of earth-rock dam overtopping and seepage failure. By

Model	Case number	Expression
USBR (1988) [14]	21	$B_{ave} = 3h_w$
Von Thun and Gillette ¹ (1990) [25]	57	$B_{ave} = 2.5 h_w + C_b$
Froehlich ² (1995) [26]	22	$B_{ave} = 0.1803 K_0 (V_w)^{0.32} (h_b)^{0.19}$
Xu and Zhang ³ (2009) [17]	75	$B_{ave} = 0.787 (h_b) (h_d/h_r)^{0.133} (V_w^{1/3}/h_w)^{0.652} e^{B_3}$
Froehlich ⁴ (2016) [23]	41	$B_{ave} = 0.27 k_M (V_w)^{1/3}$
Mei Shiang et al. (2018) [24]	154	$B_{ave} = h_b (V_w^{1/3}/h_w)^{0.84} (h_w/h_b)^{2.30} (h_d/h_0)^{0.06} e^{-0.90}$ (homogeneous dam) $B_{ave} = h_b (V_w^{1/3}/h_w)^{0.55} (h_w/h_b)^{1.97} (h_d/h_0)^{-0.07} e^{-0.09}$ (core-wall dam)

¹When $S < 1.2335 \times 10^6 m^3$, $C_b = 6.096$; when $1.2335 \times 10^6 m^3 \leq S < 6.1676 \times 10^6 m^3$, $C_b = 18.288$; when $6.1676 \times 10^6 m^3 \leq S < 1.2335 \times 10^7 m^3$, $C_b = 42.672$; when $S \geq 1.2335 \times 10^7 m^3$, $C_b = 54.864$.

²For overtopping dam failure, $K_0 = 1.4$; for seepage failure dam breaching, $K_0 = 1.0$.

³ h_r is the dam height, which is 15 m; the expression of parameter B_3 is $B_3 = b_3 + b_4 + b_5$, for core-wall dam, concrete face rockfill dam or homogeneous dam, b_3 takes -0.041 , 0.026 or 0.226 ; for overtopping or seepage failure, $b_4 = 0.149$ or -0.389 , respectively; for dams with high, medium, or low erosion rate, b_5 is 0.291 , 0.14 , or 0.391 , respectively.

⁴For overtopping dam failure, $k_M = 1.3$; for seepage failure dam breaching, $k_M = 1.0$.

Table 2.
Parameter model of the final average width of the breach.

Model	Case number	Expression
MacDonald and Langridge-Monopolis (1984) [11]	23	$T_f = 0.0179 (0.0261 (V_w h_w)^{0.769})^{0.364}$
USBR (1988) [14]	21	$T_f = 0.011 B_{ave}$
Froehlich (1995) [26]	22	$T_f = 0.00254 (V_w)^{0.53} (h_b)^{-0.9}$
Xu and Zhang ¹ (2009) [17]	75	$T_f = 0.304 T_r (h_d/h_r)^{0.707} (V_w^{1/3}/h_w)^{1.228} e^{B_5}$
Froehlich (2016) [23]	41	$T_f = 63.2 (V_w / (g h_b^2))^{0.5}$
Mei Shiang et al. ² (2018) [24]	154	$T_f = T_0 (V_w^{1/3}/h_w)^{0.56} (h_w/h_b)^{-0.85} (h_d/h_0)^{-0.32} e^{-0.20}$ (homogeneous dam) $T_f = T_0 (V_w^{1/3}/h_w)^{1.52} (h_w/h_b)^{-11.36} (h_d/h_0)^{-0.43} e^{-1.57}$ (core-wall dam)

¹ T_r means the duration of the reference dam break, take 1 h; the expression of parameter B_5 is $B_5 = b_3 + b_4 + b_5$, for core-wall dam, concrete face rockfill dam, or homogeneous dam, b_3 takes -0.327 , -0.674 , or -0.189 ; for overtopping or seepage failure, $b_4 = -0.579$ or -0.611 , respectively; for dam materials with high, medium, or low erosion rate, b_5 is -1.205 , -0.564 , or 0.579 respectively.

² T_0 means unit duration, take 1 h.

Table 3.
Dam-break duration parameter model.

assuming the shape of the breach, different flow calculation formulas and erosion formulas are used to simulate the scouring of the dam material, and different simulation methods are used to analyze the vertical undercut and lateral expansion of the breach. Most of the models use iterative numerical calculation methods based on time steps to simulate the process of dam break and can output the parameters of dam break (such as the flow of the breach, the size of the breach, the water level of the reservoir, etc.) at each time step.

For example, based on the overtopping breach mechanism of the clay-core wall dam, a mathematical model to simulate its breach process is proposed. The model is based on the shape of the dam body and the characteristics of the flood flow to

Model	Shape of breach	The flow of the breach	Erosion formula	Mechanical analysis	Breach mode	Type of dam
Cristofano (1965) [27]	Trapezoid	Wide crest weir formula	Cristofano formula	Breach without lateral collapse	Overtopping	Homogeneous
BRDAM (1981) [30]	Parabolic	Wide crest weir formula, vent flow formula	Schoklitsch formula	Breach without lateral collapse (overtopping), top collapse (seepage)	Overtopping or seepage	Homogeneous
DAMBRK (1984) [31]	Trapezoid or rectangle	Wide crest weir formula	Even flush	Breach without lateral collapse	Overtopping	Homogeneous
BEED (1985) [32]	Trapezoid	Wide crest weir formula	Einstein and Brown formula, Meyer-Peter-Mueller formula	Collapse laterally	Overtopping	Homogeneous
NWS BREACH (1988) [29]	Trapezoid or rectangle	Wide crest weir formula, vent flow formula	Correction Meyer-Peter-Mueller formula	Collapse laterally (overtopping), top collapse (seepage)	Overtopping or seepage	Homogeneous, core wall
HR BREACH (2002, 2009) [33, 34]	Effective stress method	1D stable non-uniform weir flow formula	Sediment transport formula or erosion rate formula	Single (two) side erosion, collapse laterally, stability analysis of core wall	Overtopping or seepage	Homogeneous earth dam, core wall
FIREBIRD (2006) [35]	Trapezoid	Unsteady Saint-Venant equation	Sediment transport formula or erosion rate formula	Collapse laterally	Overtopping	Homogeneous
WinDAM/SIMBA (2005, 2006, 2010) [36–38]	Rectangle	Wide crest weir formula	Erosion rate formula	Breach without lateral collapse	Overtopping	Homogeneous
DLBreach (2013) [40]	Trapezoid	Wide crest weir formula, vent flow formula	Sediment transport formula or erosion rate formula	Single (two) side erosion, collapse laterally, stability analysis of core wall, dam foundation erosion	Overtopping or seepage	Homogeneous, core wall
Hong Kong University of Science and Technology model [39]	Trapezoid	Wide crest weir formula, vent flow formula	Erosion rate formula	Collapse laterally (overtopping), top collapse (seepage)	Overtopping or seepage	Homogeneous, landslide

Model	Shape of breach	The flow of the breach	Erosion formula	Mechanical analysis	Breach mode	Type of dam
DB-IWHR series dam-break mathematical model of China Institute of Water Resources and Hydropower Research [41–43]	Trapezoid	Wide crest weir formula	Erosion rate formula	Collapse laterally	Overtopping	Homogeneous, core wall, landslide dam
NHRI-DB series dam-break mathematical model of Nanjing Hydraulic Research Institute [44–48]	Trapezoid	Wide crest weir formula, vent flow formula	Sediment transport formula or erosion rate formula	Shearing or dumping of the core wall, panel break, collapse laterally (overtopping), top collapse (seepage)	Overtopping or seepage	Homogeneous, core wall, face dam, landslide

Table 4.
Simplified mathematical model of earth-rock dam breaching.

determine the initial scoring position of the downstream slope during erosion. The flow formula of the wide crested weir is used to calculate the rupture flow. The mechanical equilibrium method is used to simulate the tipping and shear failure of the core wall; the model can also consider the erosion of the dam body on one side, the erosion on both sides, and the erosion of the dam foundation and the process of water and soil coupling during dam break.

Based on the mechanism revealed by the model test of the overtopping breach of the homogeneous cohesive earth dam, the author has established a mathematical model that can simulate its collapse process (Figure 5). The specific modules of the model are as follows.

This model is based on the shape of the dam body and the characteristics of the flow at the top of the crater to determine the formation position of the "dark ridge." The traceable erosion formula that can consider the physical and mechanical characteristics of the dam material is used to simulate the movement of the "dark ridge." The collapse of the dam body: choose a reasonable erosion formula of the dam material to simulate the development of the dam crest and the downstream slope failure, and use the limit equilibrium method to simulate the failure of the collapse slope. The model considers incomplete dam failure and erosion of the dam foundation, as well as erosion on one side and both sides of the dam body.

The flow chart of the model calculation process of the collapse process of the homogeneous earth dam is shown in Figure 6.

There are two major highlights of the NHRI-DB concrete-face dam-break mathematical model [47]: the adoption of total-load nonequilibrium transport equation (Eq. (1)) [72] to simulate the erosion process of sand gravels with a wide range of gradation and the establishment of an analogy to simulate the failure process of each concrete-face slab under various loads during the dam breaching process.

$$\frac{\partial(AC_t)}{\partial t} + \frac{\partial(Q_b C_t)}{\partial x} = -\frac{Q_b}{L_s}(C_t - C_{t*}) \quad (1)$$

where t = time; x = longitudinal coordinate; A = cross-sectional flow area in the breach channel; C_t = actual total-load sediment concentration; C_{t*} = sediment concentration at the equilibrium state; and L_s = adaptation length characterizing the adjustment of sediment from a nonequilibrium state to equilibrium state.

In the NHRI-DB core dam-break mathematical model [45], a hydraulic method was used to predict the initial scour position for high dam. A time averaged erosion equation was adopted to simulate the backward erosion of dam's shoulder.

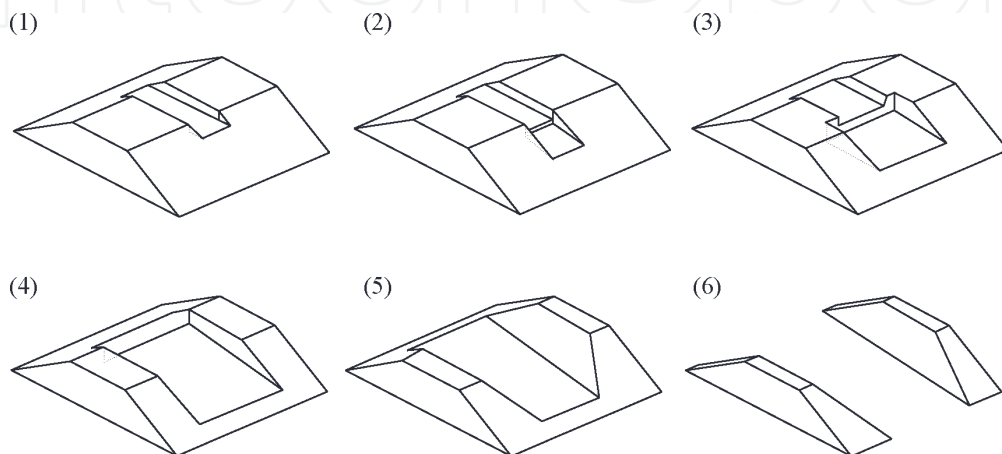


Figure 5. Schematic diagram of the author's model calculation process. (1) Breach formation, (2) Scarp formation, (3) Scarp widen, (4) Headcut scour, (5) Breach widen, (6) Breach fully formed.

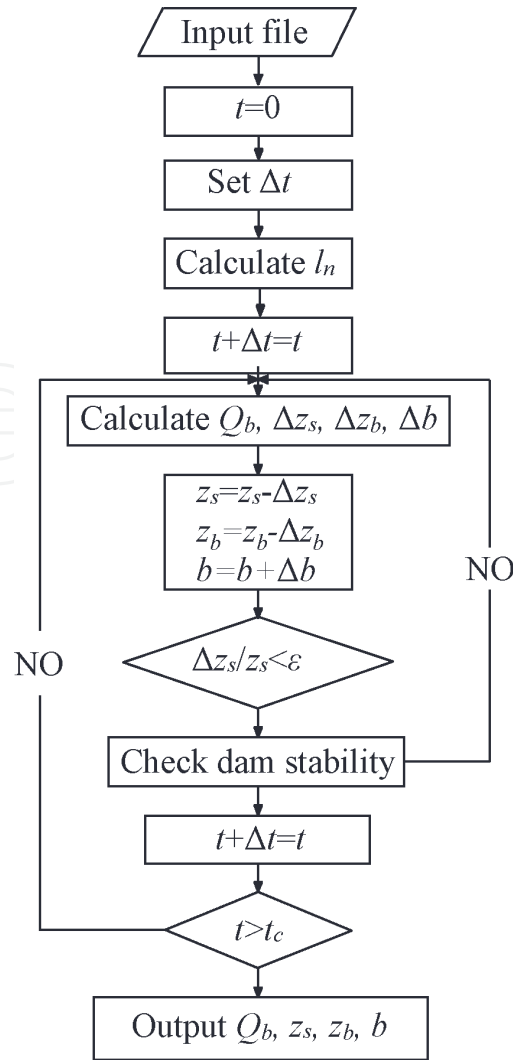


Figure 6. Calculation flow chart of the process of overburden collapse of the homogeneous earth dam.

The broad-crested weir equation (Eqs. (2) and (3)) [73, 74] was adopted to calculate the breach flow discharge. Furthermore, the sliding or overturning failure was adopted as the key mechanism for the core, which was judged based upon numerical analysis. The calculated results show that the proposed model gives reasonable peak outflow, final breach width, and failure time.

$$Q_b = k_{sm} (c_1 B_b H^{1.5} + c_2 m H^{2.5}) \quad (2)$$

where B_b is the bottom width of the breach (m), H represents the difference “ $z_s - z_b$ ” (m), in which z_b is the elevation of the breach bottom (m), m is the side slope (horizontal/vertical) of the breach, c_1 and c_2 are the discharge coefficients with values of 1.7 m^{0.5}/s and 1.3 m^{0.5}/s [73], and k_{sm} is the submergence correction factor for tailwater effects on weir outflow.

$$k_{sm} = \begin{cases} 1.0 & \frac{z_t - z_b}{z_s - z_b} < 0.67 \\ 1.0 - 27.8 \left(\frac{z_t - z_b}{z_s - z_b} - 0.67 \right)^3 & \text{otherwise} \end{cases} \quad (3)$$

where z_t is the tailwater level (m).

The advantage of this type of model is that it can consider the failure mechanism of the earth-rock dam and can use a short calculation time to complete the

Model	Determination method of breach shape	Flow of breach	Dam material erosion	Mechanical analysis	Calculation method
Wang and Bowles (2006) [50]	Scour without sediment motion	Shallow water equations	Erosion rate formula	Three-dimensional collapse laterally	Finite different method
Faeh (2007) [51]	Two-dimensional Exner equations	Shallow water equations	Traction load and suspended load formula	Collapse laterally	Finite volume method
Wu et al. (2007, 2012) [52, 53]	One- and two-dimensional nonequilibrium total sand transport equations	General shallow water equations	Total sand transport formula	Collapse laterally	Finite volume method
Swartenbroekx et al. (2010) [54]	Two-dimensional Exner equations	Shallow water equations	Traction load formula	Collapse laterally	Finite volume method
Li et al. (2011) [55]	Two-dimensional nonequilibrium sediment transport equations (suspended load)	Shallow water equations	Empirical formulas of sediment carrying rate and Sedimentation rate	Breach without lateral collapse	Finite volume method
Cao et al. (2011) [56]	Two-dimensional nonequilibrium total sediment transport equations	General shallow water equations	Traction load formula	Collapse laterally	Finite volume method
Rosatti and Begnudelli (2013) [57, 58]	Two-dimensional mass conservation and energy conservation equations (solid phases)	Shallow water equations (liquid)	Floe concentration formula	Breach without lateral collapse	Finite volume method
Juez et al. (2013, 2014) [59, 60]	One- and two-dimensional Exner equations	Saint-Venant equations and shallow water equations	10 different erosion formulas	Breach without lateral collapse	Finite volume method
Swartenbroekx et al. (2013) [61]	Two-dimensional mass conservation and energy conservation equations (traction load)	Shallow water equations (clean water)	Erosion rate formula	Breach without lateral collapse	Finite volume method
Guan et al. (2014) [62]	Two-dimensional nonequilibrium sediment transport equations (traction load)	Shallow water equations (pure water)	Traction load formula	Collapse laterally	Finite volume method
Kesserwani et al. (2014) [63]	Two-dimensional nonequilibrium sediment transport equations (suspended load)	Shallow water equations	Empirical formulas of sediment carrying rate and	Breach without lateral collapse	Intermittent Galerkin method

Model	Determination method of breach shape	Flow of breach	Dam material erosion	Mechanical analysis	Calculation method
			sedimentation rate		
Razavitoosi et al. (2014) [64]	N-S equations (solid phases, non-Newtonian fluid)	N-S equations (liquid, non-Newtonian fluid)	/	Breach without lateral collapse	Smoothed particle hydrodynamics method
Marsooli and Wu (2015) [65]	Three-dimensional nonequilibrium sediment transport equations	N-S equations	Traction load and suspended load formula	Breach without lateral collapse	Finite volume method and volume of fluid
Abderrezza et al. (2016) [66]	Two-dimensional Exner equations	Shallow water equations	Traction load formula	Collapse laterally	Finite volume method
Cantero-Chinchilla et al. (2016) [67]	One-dimensional nonequilibrium sediment transport equations	Saint-Venant equations, vertical momentum equation	Traction load and suspended load formula	Breach without lateral collapse	Finite volume method
Cristo et al. (2016, 2018) [68, 69]	Two-dimensional mass conservation and energy conservation equations (solid phase)	Shallow water equations (liquid)	Traction load formula	Bed collapse algorithm	Finite volume method
YAN Zhikun et al. (2019) [70]	Two-dimensional nonequilibrium sediment transport equations	General shallow water equations	Total sand transport formula considering bed slope	Bed collapse algorithm	Finite volume method

Table 5.
Detailed mathematical model of earth-rock dams' breaching.

simulation of the dam-break process; however, most models cannot really consider the water-soil coupling effect during the dam-break process.

2.3 Detailed mathematical model based on failure mechanism

In order to fully describe the water-soil coupling effect in the process of dams' breaching, in recent years, with the improvement of computer performance and the development of sediment science and computational fluid dynamics, a series of nonequilibrium dam material transport theory has emerged based on shallow water hypothetical detailed mathematical model for dam failure [49]. The commonly used detailed mathematical model of earth-rock dams' breaching is shown in **Table 5**.

It can be seen from the above statistics that this type of model is mainly based on the continuity equations of water flow (Eq. (4)), momentum equations (Eq. (5)), and energy equations (Eq. (6)), coupled with the sediment movement equation, and the finite volume method and other numerical simulation methods are used to discretely solve the governing equations

$$\frac{\partial \rho}{\partial t} + \frac{\partial(\rho u_x)}{\partial x} + \frac{\partial(\rho u_y)}{\partial y} + \frac{\partial(\rho u_z)}{\partial z} = 0 \quad (4)$$

$$\frac{\partial \vec{v}}{\partial t} + (\vec{v} \cdot \nabla) \vec{v} = -\frac{1}{\rho} \nabla p + \vec{f} + \frac{1}{\rho} \vec{F}_v \quad (5)$$

$$\frac{\partial}{\partial t} \left[\rho \left(e + \frac{v^2}{2} \right) \right] + \nabla \cdot \left[\rho \left(e + \frac{v^2}{2} \right) \vec{v} \right] = \rho \dot{q} - \nabla \cdot (p \vec{v}) + \rho (\vec{f} \cdot \vec{v}) + \dot{Q}_v + \dot{W}_v \quad (6)$$

In Yan Zhikun's model [70], based on the continuity equations of water flow, momentum equations, and nonequilibrium sediment transport equations, a planar two-dimensional mathematical model of dam rupture along the depth average is proposed. The sand capacity and the collapse mechanism of the two-dimensional slope during the dam-break process. The fully coupled method is used to convert the hydrodynamic equation and the nonequilibrium sediment transport equation into a shallow water equation with source terms and is based on the finite volume method under a rectangular grid. Discrete processing, using conservative, non-negative water depth numerical reconstruction format to make the model have second-order accuracy in the space-time direction, using HLLC [71] approximate Riemann solver to calculate grid boundary flux, SGM (Surface Gradient Method) format to calculate water surface gradient source terms, semi-implicit format. For the bottom bed friction term, the explicit gradient calculation of the source term of the concentration gradient is used to numerically solve the control equation.

Such models can achieve detailed simulation of the dam-break process, but the calculation speed is slow, and it can only be used for the numerical simulation of the overtopping dams' breaching. However, this method can fully consider the coupling effect of water-soil coupling in the process of dam failure and can simulate complex boundary conditions, which is the development direction of numerical simulation of earth-rock dams' breaching.

3. Conclusion and suggestions

Earth-rock dams' breaching mechanism and dam-break process simulation are the foundation of dam-break disaster assessment and emergency response. They involve fluid mechanics, sediment kinematics, soil mechanics, and other disciplines. They are complex water-soil coupling problems. After decades of research and exploration, various mathematical models of dams' breaching have been developed and made a series of innovative achievements, which provide theoretical support for improving the accuracy of flood disaster prediction of earth-rock dams. It is suggested that in the future, research efforts should be intensified on the mathematical model of the detailed simulation of the earth-rock dam breaching process, focusing on the application of visualization technology in the simulation of the dam-break process and accelerating the development of a universal and friendly simulation of the earth-rock dams' breaching and the visual calculation of the disaster-causing process software.

IntechOpen

IntechOpen

Author details

Qiming Zhong^{1*}, Yibo Shan¹ and Jiaxin Liu²

1 Nanjing Hydraulic Research Institute, Nanjing, China

2 Hohai University, Nanjing, China

*Address all correspondence to: qmzhong@nhri.cn

IntechOpen

© 2020 The Author(s). Licensee IntechOpen. This chapter is distributed under the terms of the Creative Commons Attribution License (<http://creativecommons.org/licenses/by/3.0>), which permits unrestricted use, distribution, and reproduction in any medium, provided the original work is properly cited. 

References

- [1] Ministry of Water Resources of the People's Republic of China, National Bureau of Statistics of the People's Republic of China. *Bulletin of First National Census for Water*. Beijing: China Waterpower Press; 2013 (in Chinese)
- [2] Ministry of Water Resources of the People's Republic of China. 2017 *Statistic Bulletin on China Water Activities*. Beijing: China Waterpower Press; 2018 (in Chinese)
- [3] Zhang JY, Yang ZH, Jiang JP. An analysis on laws of reservoir dam defects and breaches in China. *Scientia Sinica Technologica*. 2017;**47**:1313-1320 (in Chinese)
- [4] Dam Safety Management Center of The Ministry of Water Resources. *Register of Dam Failures in China*. Nanjing: Dam Safety Management Center of The Ministry of Water Resources; 2019 (in Chinese)
- [5] Ru NH, Niu YG. *Embankment Dam•Incidents and Safety of Large Dams*. China Waterpower Press; 2001 (in Chinese)
- [6] ASCE/EWRI Task Committee on Dam/Levee Breaching. *Earthen embankment breaching*. *Journal of Hydraulic Engineering*. 2011;**137**(12): 1549-1564
- [7] Kirkpatrick GW. *Evaluation guidelines for spillway adequacy*. In: *The Evaluation of Dam Safety*, Engineering Foundation Conf., New York. 1977
- [8] Soil Conservation Service (SCS). *Simplified Dam-breach Routing Procedure*. Washington, DC: US Department of Agriculture; 1981
- [9] Hagen VK. *Re-evaluation of design floods and dam safety*. In: *Proceedings of the 14th Congress of International Communicaton on Large Dams*, Paris. 1982
- [10] Singh KP, Snorrason A. Sensitivity of outflow peaks and flood stages to the selection of dam breach parameters and simulation models. *Journal of Hydrology*. 1984;**68**:295-310
- [11] MacDonald TC, Langridge-Monopolis J. Breaching characteristics of dam failure. *Journal of Hydraulic Engineering*. 1984;**110**(5):567-586
- [12] Costa JE. *Floods from dam failures*. In: *Open-File Rep. No. 85-560*. Denver: USGS; 1985
- [13] Evans SG. The maximum discharge of outburst floods caused by the breaching of man-made and natural dams. *Canadian Geotechnical Journal*. 1986;**23**(3):385-387
- [14] U.S. Bureau of Reclamation (USBR). *Downstream hazard classification guidelines*. In: *ACER Tech. Memorandum No. 11*. Denver: U.S. Department of the Interior; 1988
- [15] Froehlich DC. Peak outflow from breached embankment dam. *Journal of Water Resources Planning and Management*. 1995;**121**(1):90-97
- [16] Walder JS, O'Connor JE. Methods for predicting peak discharge of floods caused by failure of natural and constructed earthen dams. *Water Resources Research*. 1997;**33**(10): 2337-2348
- [17] Xu Y, Zhang LM. Breaching parameters for earth and rockfill dams. *Journal of Geotechnical and Geoenvironmental Engineering*. 2009; **135**(12):1957-1969
- [18] Pierce MW, Thornton CI, Abt SR. *Predicting peak outflow from breached*

- embankment dams. *Journal of Hydrologic Engineering*. 2010;**15**(5): 338-349
- [19] Thornton CI, Pierce MW, Abt SR. Enhanced predictions for peak outflow from breached embankment dams. *Journal of Hydrologic Engineering*. 2011;**16**(1):81-88
- [20] De Lorenzo G, Macchione F. Formulas for the peak discharge from breached earthfill dams. *Journal of Hydraulic Engineering*. 2014;**140**(1): 56-67
- [21] Hooshyaripor F, Tahershamsi A, Golian S. Application of copula method and neural networks for predicting peak outflow from breached embankments. *Journal of Hydro-Environment Research*. 2014;**8**(3):292-303
- [22] Azimi R, Vatankhah AR, Kouchakzadeh S. Predicting peak discharge from breached embankment dams. In: *E-Proc. 36th IAHR World Congress, Hague*. 2015
- [23] Froehlich DC. Predicting peak discharge from gradually breached embankment dam. *Journal of Hydrologic Engineering*. 2016;**21**(11): 04016041
- [24] Mei SA, Chen SS, Zhong QM, et al. Parametric model for breaching analysis of earth-rock dam. *Advanced Engineering Sciences*. 2018;**50**(2):60-66 (in Chinese)
- [25] Von Thun JL, Gillette DR. *Guidance on Breach Parameters*. Denver: Internal Memorandum, Bureau of Reclamation, U.S. Dept. of the Interior; 1990
- [26] Froehlich DC. Embankment dam breach parameters revisited. In: *Proceedings of the 1995 Conference On Water Resources Engineering*, New York. 1995
- [27] Cristofano EA. Method of Computing Erosion Rate for Failure of Earthfill Dams. Denver: US Bureau of Reclamation; 1965
- [28] Zhong QM, Wu WM, Chen SS, et al. Comparison of simplified physically based dam breach models. *Natural Hazards*. 2016;**84**(2):1385-1418
- [29] Fread DL. *BREACH: An Erosion Model for Earthen Dam Failure*. Silver Spring: National Weather Service, National Oceanic and Atmospheric Administration; 1988
- [30] Brown RJ, Rogers DC. *BRDAM Users' Manual*. Denver: U.S. Department of the Interior; 1981
- [31] Fread DL. *DAMBREAK: The NWS dam break flood forecasting model*. In: *National Weather Service (NWS) Rep.* Silver Spring: National Oceanic and Atmospheric Administration (NOAA); 1984
- [32] Singh VP, Scarlatos CA. Breach erosion of earthfill dams and flood routing: BEED model. In: *Res. Rep.* Research Triangle Park: Army Research Office, Battelle; 1985
- [33] Mohamed AAA, Samuels PG, Morris MW, et al. Improving the accuracy of prediction of breach formation through embankment dams and flood embankments. In: *Proceedings of the International Conference on Fluvial Hydraulics (River Flow 2002)*, Louvain-la-Neuve, Belgium. 2002
- [34] Morris MW, Kortenhaus A, Visser PJ. Modelling breach initiation and growth. In: *FLOODsite Report T06-08-02*, FLOODsite Consortium. 2009
- [35] Wang P, Kahawita R, Mokhtari A, et al. Modeling breach formation in embankments due to overtopping. In: *ICOLD Conference*, Barcelona, Spain. 2006
- [36] Temple DM, Hanson GJ, Neilsen ML, et al. Simplified breach

analysis model for homogeneous embankment: Part I, Background and model components. In: Proc. 25th Annual USSD Conference, U.S. Society on Dams, Denver. 2005

[37] Temple DM, Hanson GJ, Neilsen ML. WINDAM—Analysis of overtopped earth embankment dams. In: Proceedings of the ASABE Annual International Meeting, American Society of Agricultural and Biological Engineers, St. Joseph. 2006

[38] Hanson GJ, Tejral RD, Hunt SL, et al. Internal erosion and impact of erosion resistance. In: Proc., 30th U.S. Society on Dams Annual Meeting and Conference (CD-ROM), USSD, Sacramento. 2010

[39] Chang DS, Zhang LM. Simulation of the erosion process of landslide dams due to overtopping considering variations in soil erodibility along depth. *Natural Hazards and Earth System Sciences*. 2010;**10**(4):933-946

[40] Wu WM. Simplified physically based model of earthen embankment breaching. *Journal of Hydraulic Engineering*. 2013;**139**(8):837-851

[41] Chen ZY, Ma LQ, Yu S, et al. Back analysis of the draining process of the Tangjiashan barrier lake. *Journal of Hydraulic Engineering*. 2015;**141**(4):05014011

[42] Wang L, Chen ZY, Wang NX, et al. Modeling lateral enlargement in dam breaches using slope stability analysis based on circular slip mode. *Engineering Geology*. 2016;**209**:70-81

[43] Chen ZY, Ping ZY, Wang NX, et al. An approach to quick and easy evaluation of the dam breach flood. *Science China: Technological Sciences*. 2019;**62**. DOI: 10.1007/s11431-018-9367-4

[44] Chen SS, Zhong QM, Cao W. Breach mechanism and numerical

simulation for seepage failure of earth-rock dams. *Science China: Technological Sciences*. 2012;**55**(6):1757-1764

[45] Zhong QM, Chen SS, Deng Z. A simplified physically-based model for core dam overtopping breach. *Engineering Failure Analysis*. 2018;**90**:141-155

[46] Zhong QM, Chen SS, Mei SA, et al. Numerical simulation of landslide dam breaching due to overtopping. *Landslides*. 2018;**16**(6):1183-1192

[47] Zhong QM, Chen SS, Fu ZZ. Failure of concrete face sand-gravel dam due to water flow overtops. *ASCE's Journal of Performance of Constructed Facilities*. 2019;**33**(2):04019007

[48] Zhong QM, Chen SS, Deng Z, et al. Prediction of overtopping-induced breach process of cohesive dams. *ASCE's Journal of Geotechnical and Geoenvironmental Engineering*. 2019;**145**(5):04019012

[49] Kesserwani G, Shamkhalchian A, Zadeh MJ. Fully coupled discontinuous Galerkin modeling of dam-break flows over movable bed with sediment transport. *Journal of Hydraulic Engineering*. 2014;**140**(4):06014006

[50] Wang Z, Bowles DS. Three-dimensional non-cohesive earthen dam breach model. Part 1: Theory and methodology. *Advances in Water Resources*. 2006;**29**(10):1528-1545

[51] Faeh R. Numerical modeling of breach erosion of river embankments. *Journal of Hydraulic Engineering*. 2007;**133**(9):1000-1009

[52] Wu WM, Wang SS. One-dimensional modeling of dam-break flow over movable beds. *Journal of Hydraulic Engineering*. 2007;**133**(1):48-58

[53] Wu WM, Marsooli R, He ZG. Depth-averaged two-dimensional model

- of unsteady flow and sediment transport due to noncohesive embankment break/breaching. *Journal of Hydraulic Engineering*. 2012;**138**(6):503-516
- [54] Swartenbroekx C, Soares-Fraza S, Staquet R, et al. Two-dimensional operator for bank failures induced by water-level rise in dam-break flows. *Journal of Hydraulic Research*. 2010;**48**(3):302-314
- [55] Li SC, Duffy CJ. Fully coupled approach to modeling shallow water flow, sediment transport, and bed evolution in rivers. *Water Resources Research*. 2011;**47**(3):1-20
- [56] Cao ZX, Yue ZY, Pender G. Landslide dam failure and flood hydraulics. Part II: Coupled mathematical modelling. *Natural Hazards*. 2011;**59**(2):1021-1045
- [57] Rosatti G, Begnudelli L. A closure-independent generalized roe solver for free-surface, two-phase flows over mobile bed. *Journal of Computational Physics*. 2013;**255**:362-383
- [58] Rosatti G, Begnudelli L. Two-dimensional simulation of debris flows over mobile bed: Enhancing the TRENT2D model by using a well-balanced generalized roe-type solver. *Computers and Fluids*. 2013;**71**:179-195
- [59] Juez C, Murillo J, Garcia-Navarro P. Numerical assessment of bed-load discharge formulations for transient flow in 1D and 2D situations. *Journal of Hydroinformatics*. 2013;**15**(4):1234-1257
- [60] Juez C, Murillo J, Garcia-Navarro P. A 2D weakly-coupled and efficient numerical model for transient shallow flow and movable bed. *Advances in Water Resources*. 2014;**71**:93-109
- [61] Swartenbroekx C, Zech Y, Soares-Fraza S. Two-dimensional two-layer shallow water model for dam break flows with significant bed load transport. *International Journal for Numerical Methods in Fluids*. 2013;**73**(5):477-508
- [62] Guan M, Wright NG, Sleigh PA. 2D process-based morphodynamic model for flooding by noncohesive dyke breach. *Journal of Hydraulic Engineering*. 2014;**140**(7):04014022
- [63] Kesserwani G, Shamkhalchian A, Zadeh MJ. Fully coupled discontinuous Galerkin modeling of dam-break flows over movable bed with sediment transport. *Journal of Hydraulic Engineering*. 2014;**140**(4):06014006
- [64] Razavitoosi SL, Ayyoubzadeh SA, Valizadeh A. Two-phase SPH modelling of waves caused by dam break over a movable bed. *International Journal of Sediment Research*. 2014;**29**(3):344-356
- [65] Marsooli R, Wu WM. Three-dimensional numerical modeling of dam-break flows with sediment transport over movable beds. *Journal of Hydraulic Engineering*. 2015;**141**(1):04014066
- [66] Abderrezzak KEK, Moran AD, Tassi P, et al. Modelling river bank erosion using a 2D depth-averaged numerical model of flow and non-cohesive, non-uniform sediment transport. *Advances in Water Resources*. 2016;**93**:75-88
- [67] Cantero-Chinchilla FN, Castro-Orgaz O, Dey S, et al. Nonhydrostatic dam break flows. II: One-dimensional depth-averaged modeling for movable bed flows. *Journal of Hydraulic Engineering*. 2016;**142**(12):04016069
- [68] Cristo CD, Greco M, Iervolino M, et al. Two-dimensional two-phase depth-integrated model for transients over mobile bed. *Journal of Hydraulic Engineering*. 2016;**142**(2):04015043
- [69] Cristo CD, Evangelista S, Greco M, et al. Dam-break waves over an erodible

embankment: Experiments and simulations. *Journal of Hydraulic Research*. 2018;**56**(2):196-210

[70] Yan ZK. Research on Mechanism and Numerical Model of Tailing Dam Break due to Overtopping. Nanjing: Nanjing Hydraulic Research Institute; 2019 (in Chinese)

[71] Balsara DS. A two-dimensional HLLC Riemann solver for conservation laws: Application to Euler and magnetohydrodynamic flows. *Journal of Computational Physics*. 2012;**231**(22): 7476-7503

[72] Wu WM. *Computational River Dynamics*. London: Taylor & Francis; 2007

[73] Singh VP. *Dam Breach Modeling Technology*. Dordrecht, Netherland: Kluwer Academic; 1996

[74] Fread DL. *DAMBREAK: The NWS Dam Break Flood Forecasting Model*. Silver Spring: National Oceanic and Atmospheric Administration, National Weather Service; 1984