

Optimal scheduling of smart microgrids considering electric vehicle battery swapping stations

J. Garcia-Guarin¹, W. Infante², J. Ma³, D. Alvarez⁴, S. Rivera⁵

^{1,4,5}Department of Electrical Engineering, Faculty of Engineering, Universidad Nacional de Colombia, Colombia

^{2,3}Department of Electrical Engineering, Faculty of Engineering, University of Sydney, Australia

Article Info

Article history:

Received Mar 22, 2020

Revised Apr 24, 2020

Accepted May 3, 2020

Keywords:

Electric vehicle
Microgrids
Optimization
Scheduling
Swapping stations

ABSTRACT

Smart microgrids belong to a set of networks that operate independently. These networks have technologies such as electric vehicle battery swapping stations that aim to economic welfare with own resources. Improper handling of electric vehicles services represents overload, congestion or surplus energy. This study addresses both management and support of electric vehiculos battery swapping stations. The formulation of a decision matrix examines economically viable alternatives that contributes to scheduling battery swapping stations. The decision matrix is implemented to manage the swapping, charging and discharging of electric vehicles. In addition, the smart microgrid model evaluates operation issues. The smart microgrid model used extends with considerations of demand response, generators with renewable energies, the wholesale market, local market and electricity spot price for electric vehicles. Additionally, uncertainty issues related to the planning for the infrastructure of the electric vehicle battery swapping station, variability of electricity prices, weather conditions and load forecasting are used. Mentioned stakeholders must maximize their economic benefits optimizing their uncertain day-ahead resources. The proposed hybrid optimization algorithm supports aggregator decision making. This algorithm achieves a 72% reduction in total cost. This percentage of feasible reduction is obtained by calculating the random solution with respect to the suboptimal solution.

Copyright © 2020 Institute of Advanced Engineering and Science.
All rights reserved.

Corresponding Author:

Sergio Rivera,
Department of Electrical Engineering,
Universidad Nacional de Colombia,
Carrera 30 Número 45-03, Bogotá, Colombia.
Email: srriverar@unal.edu.co

NOMENCLATURE

f	Time zero for EV batteries
i	Distributed generation (DG) units
j	PV units
k	External suppliers
E	Energy storage systems
P_{DG}	Active power generation (kW)
P_{ext}	External supplied power (kW)

Indexes:

L	Loads
M	Markets
S	Scenarios
t	Periods

Variables:

P_{ESS^-}	Discharge power of ESS (kW)
P_{EV^-}	Discharge power of EV (kW)

P_{ESS^+}	Charge power of ESS (kW)	N_{fc}	Number of fully-charged batteries
P_{EV^+}	Charge power of EV (kW)	N_c	Number of batteries to charge
P_{curt}	Power reduction of load (kW)	N_d	Number of batteries to discharge
P_{imb-}	Unsatisfied power for load (kW)	N_{sw}	Number of batteries to swap
P_{imb^+}	Exceeded power of DG unit (kW)	N_i	Number of initial batteries in the station
P_{buy}	Power bought to the market (kW)	N_D	Initial EV station visits (EV demand)
P_{sell}	Power sold to the market (kW)	N_{ev}	Number of EVs
P_{PV}	Photovoltaic generation (kW)	J	Demand welfare
Parameters			
δ	Full charging battery interval	C_{buy}	Cost for buying energy (m.u./kWh)
ζ	Full discharging battery interval	C_{sell}	Cost for selling energy (m.u./kWh)
N_{DG}	Number of DG	$\pi(s)$	Probability of scenario s
N_k	Number of external suppliers	P_{PV}	Photovoltaic generation (kW)
N_e	Number of ESSs	P_{load}	Forecasted load (kW)
N_L	Number of loads	MP	Market price in wholesale and local markets (m.u./kWh)
N_m	Number of markets	P_{sw}	Price for swapping a batterie (m.u.)
N_s	Number of scenarios	P_m	Price for missing a battery (m.u.)
T	Number of periods	MP_e	EVs market price (m.u.)
C_{DG}	Generation cost of DG (m.u./kWh)	η^d	Efficiency for discharging
C_{ext}	Cost of external supplier (m.u./kWh)	η^c	
C_{PV}	Cost of PV generation (m.u./kWh)	ν^β	
C_{ESS}	Cost of ESS (m.u./kWh)	ν^α	Charger rate of the on-board EV (kW)
C_{load}	Cost of load (m.u./kWh)	ν^γ	Charger rate from the charger level specification (kW)
C_{imb}	Grid imbalance cost (m.u./kWh)	ev	Type of EV

1. INTRODUCTION

Electric vehicles (EVs) have shown additional benefits compared with their fossil fuel vehicle counterparts [1]. They produce fewer emissions even when considering their whole process of energy production, independently of their energy source [1]. In addition to lower emissions, EVs may also use renewables energies as a source of power [1]. However, one of the greatest deficiencies of EVs is that conventional vehicles can easily be refueled, while EVs require long charging times that need planning. This is combined with the difficulties in setting up an infrastructure with specialized equipment to facilitate the use of EVs [1]. Given these scenarios, the sustainable EV operation must rely on the efficient EV scheduling, among others.

There are still challenges in the deployment of EV charging infrastructure. First, EVs increase the power demand on the grid [2]. Second, when distributed generation is available, uncertainty over the photovoltaic and wind generation, electricity prices, load forecasting, and swapping demand can influence the operation of the electrical network [3]. Furthermore, demand management considers strategies for flattening the demand of EV's and load with demand response (DR), such as moving the peak load to valley hours [3]. Third, time role is crucial to schedule events, such as swapping, charging, and discharging of EVs batteries [4]. Fourth, the longevity of battery life is a concern for end users given the level of charging and discharging that users must undergo [4]. Fifth, consumers may have range anxiety on whether EVs batteries can last all their trips. These barriers can also represent restrictions to the proper use of the microgrid with EVs. As an illustration, if the customers distrust both EV technology and the associated infrastructure.

This risky behaviour may result in the overuse of charging stations [4]. Finally, the overall inherent uncertainties that the aggregator must manage when implementing the smart microgrid (SMG) is significant. In fact, SMG is defined as a group of loads with DR and energy storage systems (ESSs), as much as they act as a unified entity. SMG operates in both connected and isolated modes [5]. However, demand of users, market prices, and uncertain renewable energy production may lead to barriers in creating efficient charging station infrastructures [6]. To countermeasure these challenges, an aggregator can be formulated [6, 7].

Energy aggregators can be made by integrating EVs and ESSs. Furthermore, battery swapping stations (BSSs) have more competitive visit times of EVs in comparison with traditional stations, which only have the option of charging batteries [6]. Regarding the schedule, public transport would prefer swapping the battery instead of charging batteries due to the critical operating time [6, 7]. In SMGs, a forecasting issue is the prediction of EVs visits [6]. An aggregator may deal with this problem, as it manages components such as photovoltaic panels, loads with DR, ESSs, and EVs [8]. The last two can both discharge (or charge) power and buy (or sell) energy in SMGs [9]. The aggregator coordinates the service reliability among the stakeholders, EVs scheduling, hours of load shifting, or valley filling of EVs. Aggregators should also consider uncertainties such as EVs trips planning, forecasting load, electricity prices, and generation with renewable energies [10]. Finally, the increase in SMG profits has been addressed with metaheuristic optimization tools, producing outstanding solutions in acceptable times [9].

Under this context, the proposed SMG model introduces an aggregator, who optimizes EV BSS. Equally notable, this approach is formulated using a decision matrix, which aims to simulate operating conditions such as charging (or discharging) times, stochastic visits, and batteries swapping of EVs. Without overlooking other elements, this study formulates the programming of traditional and renewable energies, ESSs, electricity markets, and loads with DR. The main contributions of this paper are described below:

The SMG model introduces stochastic scheduling due to the EV station visits based on the K-means clustering approach, and price variability in electricity markets. Both aspects are formulated according to the operation approach of EV BSS. To be more comprehensive, the SMG model includes uncertainty conditions, such as weather forecast, load prediction, and wholesale and local markets.

A decision matrix to EV BSS is scheduled introducing significant elements in EVs, such as state of charge (SOC) of EVs, type of vehicle, probability of EVs visiting the BSS, state of the battery (swap or do nothing) and idle spaces (per hour). The idle spaces are generated when the charge of a battery must be mandatory, to exemplify a reserve of batteries that guarantees a good service in the case of unexpected visits of EVs in the BSS. The proposed SMG model has continuous and discrete variables, as well as a decision matrix that introduces a new problem related to integer numbers, sequence of numbers and idle spaces. Therefore, the optimization algorithm "variable neighbourhood search-differential evolutionary particle swarm" (VNS-DEEPSO) is implemented in order to reduce the cost in SMGs with uncertainty environments.

This document is organized as follows: section 2 presents the state of the art of SMG models that include EV BSS. Section 3 formulates the SMG model and emphasizes the constraint of the SMG with EV BSSs. In section 4, the uncertainty sources are highlighted and the EV BSS matrix with uncertainty is presented, showing the operational strategy. In section 5, the case study and results are discussed. Finally, section 6 outlines the conclusions.

2. STATE OF THE ART

SMGs have challenges related to the planning of the day-ahead operation of EVs. At the same time, other elements (load with demand response - DR, generation - Gen and ESSs) must be coordinated [7]. Six elements are tackled as main contribution of this study: (1) load with DR, (2) Gen, (3) ESSs, (4) EV-prosumer (EVP), (5) BSS, and (6) uncertainty of EV BSS, Gen, loads with DR and energy markets. Hereinafter, the six terms are called uncertainty sources. According to the information collected, Table 1 organizes SMG models from 1 to 10, based on their main characteristics.

SMG model 1 schedules the day ahead, where the optimization problem is solved by assembling the genetic algorithm with the feasible solution region [3]. Therefore, an economical operation of BSS is proposed when it chooses the level of tolerable risk. This BSS model operates as an isolated network, that is, it does not integrate other elements of the grid and eliminates the discharged function of EVs batteries [3].

SMG model 2 coordinates the charging, discharging, and swapping of batteries. When EVs can buy/sell energy to the grid, this role is called EVP. The swapping prices and charging intervals are compared with traditional strategies. Then, the results demonstrate that the profit of BSS coordination is acceptable in comparison with other strategies. Nevertheless, the associated cost does not take into account other elements of the grid [6].

SMG model 3 includes other elements such as EV operation, photovoltaic (PV) generation, electricity market pricing, and DR. In this case, the EV model has no comprehensive description of scenarios

and constraints [9]. SMG model 4 proposes the dispatch of energy for EVs, wind and photovoltaic power generation. In fact, this EV model associates EVs with each node and only the load power varies. Therefore, the model lacks an approach of discharging, swapping batteries, and constraints [11].

BSS model 5 gathers the EVs in programs of DR. The case study demonstrates that ignoring the uncertainty of EVs traffic and PV generation leads to an inappropriate planning. Furthermore, BSS model 5 assumes simplifications without considering other elements of the grid and the uncertainty of the market prices [12]. The model 6 for battery charging stations considers the uncertainty over charging EVs. EV uncertainties are modeled through a Gaussian distribution model. In addition, the EVs are connected to the grid, PV generation, and battery-ESSs. In spite of this, the last variables have uncontrolled stochastic uncertainties, since there are no details about these uncertainty models [13].

BSS model 7 forecasts wind-power generation and uses real time prices to plan in short time. However, the EV model takes into account the uncertainty over charging EVs [14]. BSS model 8 considers the stochasticity in energy markets and demand management of batteries. Nevertheless, model 8 simplifies the interaction between stakeholders and EV BSS [15].

BSS model 9 purchases power in an upstream network and maximizes the day-ahead incomes. This bi-level model is divided into lower and upper levels. This model has access to the mechanism of real-time prices. The BSS model includes a micro-turbine, PV and wind generation. The uncertainty of the last two is considered together with the uncertainty of the load demand and the arrival time of EV. However, this model includes neither the ESS nor the load shedding restrictions [16]. A framework is proposed to restrict the load shedding in [17]. Other research also considers the uncertainty of PV and wind generation and introduces an index of probability of islanding operation [18].

BSS model 10 is formulated in this paper and integrates constraints to EVs through BSS, where BSS uncertainty is simulated by means of a K-means clustering approach. Moreover, it integrates SMG with uncertainty elements such as PV generation, electricity markets, and loads with DR. SMG planning is performed by the aggregator, which tries to increase the profits of the SMG. Then, the aggregator minimizes the operational cost while increasing the incomes. Indeed, the transactions in electricity markets generate profit. Besides, the aggregator has assets, such as EVs BSSs and ESSs, which become prosumers as they can either buy or sell energy.

Table 1. Review of microgrids with EVs BSS

No	DR	Gen	ESS	EVP	BSS	Uncertainty sources
1	No	Yes	No	No	Yes	EVs and PV generation [3]
2	No	No	No	Yes	Yes	EVs and electricity markets [6]
3	Yes	Yes	Yes	Yes	No	EVs, PV generation, electricity markets, and loads with DR [9]
4	Yes	No	No	No	No	EVs, wind-power, and PV generation [11]
5	Yes	Yes	No	No	Yes	EVs and PV generation [12]
6	No	Yes	Yes	No	No	EVs [13]
7	No	Yes	No	No	Yes	Electricity markets and wind-power generation [14]
8	No	Yes	No	Yes	Yes	Battery demand and electricity markets [15]
9	No	Yes	No	Yes	Yes	PV and wind-power generation, load demand and EVs [16]
10	Yes	Yes	Yes	Yes	Yes	EVs, PV generation, electricity markets, and loads with DR (This SMG model is formulated in this paper)

The BSS model formulation can be applied for DR programs [19]. The load is usually involved in DR programs [9]. In the BSS model, the aggregator negotiates energy in the electricity spot price. In the BSS, one available asset is the battery bank in the BSS that can be encoded with a EVs BSS matrix. The aggregator deals with the uncertainty in the arrival time of EVs and the volatility of market prices. For both, the uncertain scenarios are estimated with the K-means grouping method. In the case study, vehicle driving patterns are forecast based on NWS traffic [6]. Load management for EVs should tackle congestion times and relieve the scarcity of energy [20]. The SOC eases the scheduling the batteries charge or discharge as indicator [20].

In this way, SMG model 10 is the most comprehensive, taking into account the previous revision in Table 1. Satisfactory solutions of vital importance are inspected, through the formulation of heuristic methods [9, 21]. These methods have been widely studied, however, there are still development gaps related to yields, and exploration and exploitation methods [21]. A vast majority of metaheuristics proposes a sequential combination of heuristics to be more successful [21]. For example, a hierarchy analysis is set out among several algorithms such as enhanced velocity differential evolutionary particle swarm optimization algorithm. In Figure 1, the main algorithms reported in the literature are organized according to the hierarchy of a better suboptimal solution [9, 22]. In summary, VNS-DEEPSO algorithm turns out to have a greater

hierarchy regarding the SMG models proposed in [9, 22] and it is described in two (VNS and DEEPSO) main components below. VNS-DEEPSO is widely tested in a robust optimization approach [9]. This research finds out a robust solution with low sensibility to some uncertainty parameters, such as PV power forecast, load prediction, EVs planning, and wholesale and local markets [9].

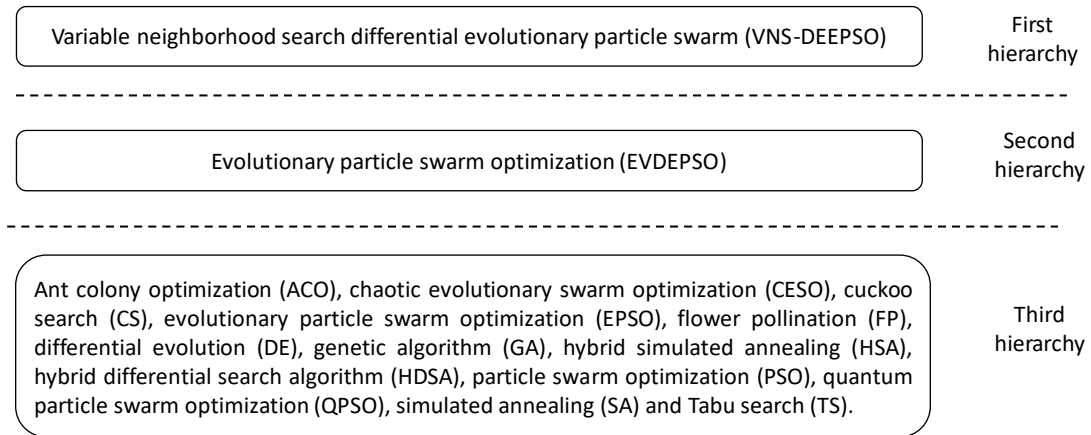


Figure 1. Hierarchy of the best suboptimal solutions based on [9, 22]

2.1. Variable neighborhood search-VNS

VNS is used in nonlinear optimization, as it can find a local optimum with quality solutions [23]. The algorithm makes automatic neighborhood changes and aims to extend the local search. The VNS algorithm is defined in two main stages: initialization and repetition. The initialization stage consists in defining the neighborhood structures. In the repetition is carried out in three steps. First step, the initial solution is found in the neighborhood. Second step, the search method looks for an initial solution called local optimum. In the third step, the local optimum is stored. Afterward, when the new solution improves the local optimum solution, then the local optimum solution will be updated. Two cases can happen: first, the new solution found in the process is worse than the local optimum or second, the new solution found is the same as the local optimum. In both cases, the search continues for the next neighborhood structure. These steps are repeated until the last neighborhood structure [23, 24].

2.2. Differential evolutionary particle swarm optimization-DEEPSO

DEEPSO algorithm was developed based on three metaheuristics: differential evolution (DE), evolutionary algorithm (EA) and particle swarm optimization (PSO). These methods try to find the global correct direction and jointly search for a robust solution [25]. EA algorithm uses biological operators such as reproduction, mutation, recombination, and selection. Therefore, the population evolves through biological techniques. Furthermore, the fitness determines the solution quality [26].

PSO algorithm is a set of candidate solutions as swarm particles. They flow in tracks of the search space. The search motivation is the best performance of them and their neighbors [27]. DE algorithm has three or four operational parameters and in roughly 20 lines, it includes a simple and adaptable mutation operator [26]. Finally, DEEPSO algorithm was introduced as a metaheuristic technique and is a hybrid among EA, PSO, and DE. It has best outcomes than other techniques, however, it does not provide a deductive demonstration [25].

3. SMART MICROGRID MODEL

This section presents the main assumptions in the BSS model 10 of SMG that represents the profits (including operation costs and incomes). Figure 2 represents the main elements of the SMG (ESS, EV BSS, load with DR, day-ahead markets, PV generation and DG). The arrows mean buy or sell energy: selling is symbolized by the line entering to the aggregator and buying by the line coming out from the aggregator. The red line highlights the elements with uncertainty. The SMG model is obtained by codifying a black box model of SMG from [28] and a decision matrix is developed by collecting available data from [29, 30], together with the EV uncertainty model based on the methodology from [6]. The main SMG assumptions are listed below.

- SMGs is a component of the smart grid, but also SMGs operate independently and self-sufficiently. By the same token, SMGs consist of a set of loads and generators operating as a unique system [31]. In this context, SMGs have aggregators that try to increase the SMG profits.
- SMGs are flexible in connecting distributed generation (DG) and PV generation [32].
- Two electricity markets are considered wholesale and local, and the EV prices are estimated with the Australian Market Operator from January 2016 to June 2019. Prices from electricity markets lead to revenues for selling or expenses for buying energy [28].
- A realistic approach of SMG includes energy resources with uncertainty. The uncertainty sources come from (a) PV renewable generation, (b) load profiles, (c) visit of EVs to BSSs, and (d) electricity market prices for wholesale, local, and electricity spot for EVs [6, 28].
- The aggregator uses ESS and BSS as their own assets and supports the programming of energy resources of SMG. Indeed, ESS has constraints related to the state of the battery, while EVs have constraints related to stochastic visits to BSS, brand, and plug type of EV.
- The improvement of SMG profits is formulated with a heuristic optimization algorithm. Specifically, the VNS-DEEPSO algorithm is a recently studied technique that has demonstrated good performance for these types of problems [21].

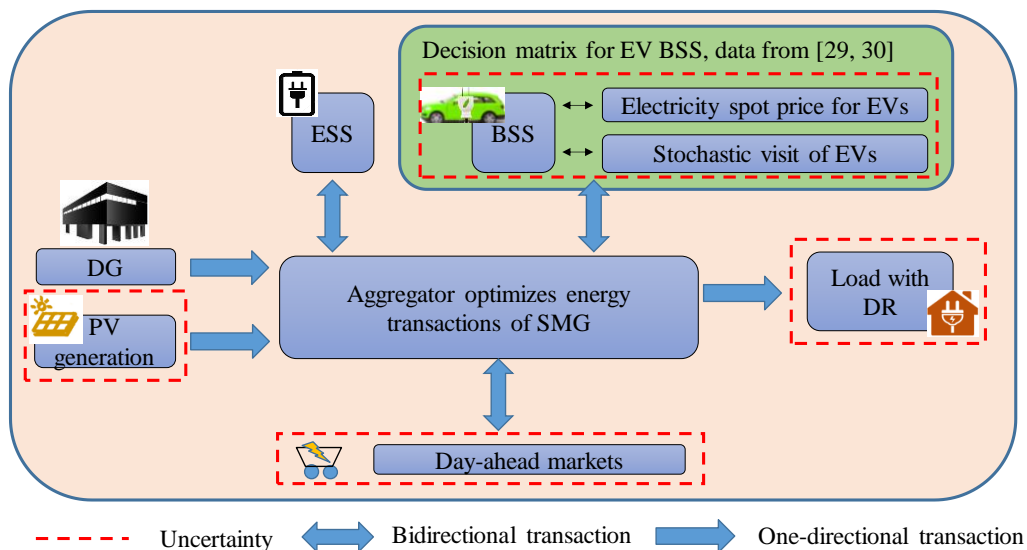


Figure 2. Depiction of energy transactions in SMG

According to the main aspects in the SMG operation, the objective function aims to minimize Z , that is, the negative of the profits (1), which means that profits are maximized. It is defined as the addition and subtraction of six terms. The first term introduces the value of buying energy to load with DR. The second term, Gen can be negative when the energy of DGs and PV generation are sold. The third, fourth and fifth terms are the prosumers, represented by the ESS, BSS of EVs, and market transactions (MTs). These costs or revenues are quantified based on the type of transfer. In the first place, the incomes are represented with a negative value and, in the second place, costs are estimated with a positive value. The sixth term of (1) is penalties (Pen), which are defined for an imbalance, when the demand is not satisfied or the generation is exceeded [28]. Fixed costs are related to the purchase of batteries, degradation of components, and maintenance. As in math, the derivative of a constant is zero. Fixed costs are also constant (they do not vary regardless of the decision variables), therefore, they are not included in the objective function, because their change rate is zero (1) [6]. For explanations purposes, the six terms on the right side of (1) are formulated from (2) to (7).

Equation (2) represents the prices (P) per capacity (C) of loads with DR and the scenarios (s) have a probability ($\pi(s)$). In (3), the total generation is denoted as the sum of DGs, external supplier, and PV generation. Equation (4) details the operation of the ESS. In (5), BSS revenue is calculated from allocating a swapped battery N_{sw} per price P_s . If EVs visit the station, but there is no battery to swap, then BSS owners will receive penalties. The penalty is calculated based on the subtraction of an assigned battery N_{sw} from EVs battery demand N_D [15]. In (5), the efficiencies (η^d and η^c) refer to charging and discharging of batteries,

while N_c and N_d represent the number of batteries that are charged and discharged in the electricity spot price for EVs (MP_e). In (6), MTs represent the sale (C_{buy}) and purchase (C_{sell}) of energy. Finally, the penalizations (Pen) are made such that the demand is not satisfied, or the generation is exceeded as shown in (7). This model is structured with mixed-integer linear programming. However, in (9) the constraint for demand with DR is nonlinear, so it can be classified as mixed-integer nonlinear programming.

$$\text{minimize } Z = DR - Gen + ESS + BSS + MT + Pen \quad (1)$$

$$DR = \sum_{s=1}^{N_s} \sum_{t=1}^{T=24} \sum_{l=1}^{N_l} P_{load(l,t,s)} \cdot C_{load(l,t)} \cdot \pi(s) \quad (2)$$

$$Gen = \sum_{t=1}^{T=24} \sum_{i=1}^{N_{DG}} P_{DG(i,t)} \cdot C_{DG(i,t)} + \sum_{t=1}^{T=24} \sum_{k=1}^{N_k} P_{ext(k,t)} \cdot C_{ext(k,t)} + \sum_{s=1}^{N_s} \sum_{t=1}^{T=24} \sum_{l=1}^{N_{PV}} P_{PV(j,t,s)} \cdot C_{PV(j,t)} \cdot \pi(s) \quad (3)$$

$$ESS = \sum_{s=1}^{N_s} \sum_{t=1}^{T=24} \sum_{e=1}^{N_e} P_{ESS(j,t,s)} \cdot C_{ESS(j,t)} \cdot \pi(s) \quad (4)$$

$$BSS = \sum_{s=1}^{N_s} \sum_{t=1}^{T=24} \left(\begin{array}{c} -N_{sw(t,s)} \cdot P_{sw(t)} \\ +P_{m(t)} \left(N_{D(t,s)} - N_{sw(t,s)} \right) \\ -MP_{e(t,s)} \left(\eta^d N_{d(t,s)} - \frac{N_{c(t,s)}}{\eta^c} \right) \end{array} \right) \cdot \pi(s) \quad (5)$$

$$MT = \sum_{s=1}^{N_s} \sum_{t=1}^{T=24} \left(\sum_{m=1}^{N_m} (C_{buy(m,t)} - C_{sell(m,t)}) \right) \cdot MP_{(m,t,s)} \cdot \pi(s) \quad (6)$$

$$Pen = \sum_{s=1}^{N_s} \sum_{t=1}^{T=24} \left(\begin{array}{c} \sum_{l=1}^{N_l} P_{imb^-(j,t,s)} \cdot C_{imb^-(t)} \\ + \sum_{i=1}^{N_{DG}} P_{imb^+(j,t,s)} \cdot C_{imb^+(t)} \end{array} \right) \cdot \pi(s) \quad (7)$$

The energy balance has constraints shown in (8). The conservative balance should be zero. The energy balance is composed of the total generation (DG, an external supplier, and PV), ESS, load with DR, transfer in the market, and imbalance in the generation of energy [28]. EVs BSS has another analysis equal to the energy balance shown from (10) to (17). This model also considers that EVs and loads are involved in DR programs. Equation (9) formulates a constraint for the load DR that they should be different from zero and the demand welfare J represents at least 10 % of the total energy being supplied for all periods [32]. Equation (1) is subject to (8) and (9). EVs encompass the DR program and schedule the BSS arrival time with the following assumptions. The amount of visits of EVs is expected to be fixed [6]. However, visiting hours are estimated with the K-means clustering method [6]. Therefore, the visiting hours of EVs is uncertain [16]. The priority in the BSS is that the swapping batteries must be charged. Once the batteries are charged, the aggregator decides whether to discharge or swap them. This option is only possible when one or more EVs eventually demand to swap a battery.

$$\sum_{i=1}^{N_{DG}} P_{DG(i,t)} + \sum_{k=1}^{N_k} P_{ext(k,t)} + \sum_{j=1}^{N_{PV-DG}} P_{PV(j,t,s)} + \sum_{e=1}^{N_e} (P_{ESS^-(e,t,s)} - P_{ESS^+(e,t,s)}) \quad \forall t \in T, \forall s \in S \quad (8)$$

$$+ \sum_{l=1}^{N_L} (P_{curt(l,t,s)} - P_{load(l,t,s)}) + \sum_{m=1}^{N_m} (P_{buy(m,t,s)} - P_{sell(m,t,s)})$$

$$+ \sum_{i=1}^{N_{DG}} P_{imb^+(i,t,s)} + \sum_{l=1}^{N_L} P_{imb^-(l,t,s)} = 0$$

$$J \leq 1 - e^{-\frac{10 \sum_{t=1}^T \sum_{l=1}^{N_L} P_{load(l,t,s)} \cdot C_{load(l,t,s)}}{\max(\sum_{t=1}^T \sum_{l=1}^{N_L} P_{load(l,t,s)} \cdot C_{load(l,t,s)})}} \quad \forall t \in T, \forall s \in S \quad (9)$$

Fully charged batteries are available per hour. At least one fully charged battery is guaranteed every period in the BSS. In the event that electric vehicles visit the substation, two cases may occur. In the first case, the battery is not swapped because the aggregator does not consider it compelling or there are no batteries available. These assumptions contemplate that the aggregator is penalized, so these situations are undesirable [15]. In the second case, the battery is swapped. The day begins with a fully charged battery bank. EVs arriving at the BSS have completely depleted batteries [6]. The charging / discharging capacity of EVs batteries is constant. This is estimated with the average charging time according to the type of charger and the EV brand [6]. The battery swapping time is considered negligible [16].

The substation has a constant number of batteries [33]. However, the SOC depends on factors, such as the visits of EVs and the decisions of the aggregator [16]. Battery degradation is estimated as a fixed cost. In other words, the variability of costs for battery degradation is assumed negligible for day-ahead planning [33]. The aggregator can swap several batteries at the same time [33]. In accordance with the aforementioned considerations, the restrictions for the programming of EVs are formulated.

In (10), fully-charged batteries (N_{fc}) include the previous fully-charged batteries in each period, new batteries that are fully-charged (N_c) and depleted batteries that are swapped for fully-charged batteries (N_{sw}). An additional function of EV batteries consists in supplying the SMG demand. In (11), the waiting time for charging or discharging is represented by the interval charging time (δ) or interval discharging time (ζ). δ is calculated as the ratio between the vehicle battery capacity (v^β) and the minimum between the power of the on-board EV (v^α) and the allowed power from the charger level specification (v^γ).

The acceptance rate is limited by the EV technology for charging or discharging in BSS. EV charging levels are frequently grouped into three categories as shown in Table 2 [34]. Level 1 chargers are required either at home or in overnight process. Level 2 chargers have two uses in public or private facilities. Level 3 chargers are developed with technology that allows a quick charge in a short time; however, these advances are at a premature phase yet [34].

The next EV restriction (12) establishes the initial batteries in the station (N_i). Fully-charged batteries (N_{fc}) should maintain this limit. Furthermore, discharging (N_d) and swapping (N_{sw}) batteries are allowed without surpassing the number of initial batteries (13). In addition, EV customers demand (N_D) should be higher than the batteries being swapped (14).

The batteries to be charged (N_c) depend ($N_i - N_{fc(t,s)}$) on the battery availability and the allocated batteries to swap N_{sw} in the actual period (15). In (16), the SOC is represented by the succession of the charge ($\sum_{f=0}^{\delta-1} N_{c(t-f,s)}$) and discharge ($\sum_{f=0}^{\zeta-1} N_{d(t-f,s)}$) periods. The sum of these two terms cannot exceed the initial number of batteries. In (17), decision variables are greater than or equal to zero.

Equation (1) is then subject to

$$N_{fc(t-1,s)} + N_{c(t-\delta,s)} - N_{d(t-\zeta,s)} - N_{sw(t,s)} = N_{fc(t,s)} \quad \forall t \in T, \forall s \in S \quad (10)$$

$$\delta \text{ or } \zeta = \frac{v^\beta}{\min(v^\alpha, v^\gamma)} \quad (11)$$

$$0 \leq N_{fc(t,s)} \leq N_i \quad \forall t \in T, \forall s \in S \quad (12)$$

$$N_{d(t,s)} + N_{sw(t,s)} \leq N_i \quad \forall t \in T, \forall s \in S \quad (13)$$

$$N_{sw(t,s)} \leq N_{D(t,s)} \quad \forall t \in T, \forall s \in S \quad (14)$$

$$N_{c(t,s)} \leq N_i - N_{fc(t,s)} + N_{sw(t,s)} \quad \forall t \in T, \forall s \in S \quad (15)$$

$$\sum_{f=0}^{\delta-1} N_{c(t-f,s)} + \sum_{f=0}^{\zeta-1} N_{d(t-f,s)} \leq N_i \quad \forall t \in T, \forall s \in S \quad (16)$$

$$N_i, N_{sw(t,s)}, N_{c(t,s)}, N_{d(t,s)} \geq 0 \quad \forall t \in T, \forall s \in S \quad (17)$$

$$N_i, N_{sw(t,s)}, N_{c(t,s)}, N_{d(t,s)} \in \mathbb{Z}$$

Table 2. Specifications of the charger power level [34]

Power Level	Typical use	Charger rate (v^r)	Variant
Level 1	Charging at home or office	1.4 kW (12 A)	A
		1.9 kW (20 A)	B
Level 2	Charging at private or public outlets	7.7 kW (32 A)	A
		19.2 kW (80 A)	B
Level 3	Commercial	Up to 50 kW	A
		Up to 100 kW	B

4. UNCERTAINTY SOURCES

The uncertainty is represented in the three groups presented below.

4.1. Uncertainty of PV generation, electricity markets, and loads with DR

The case study is created by using 5000 scenarios based on [28]. This research looks for robust solutions to the uncertainty parameters, such as PV power forecast, load prediction, and wholesale and local markets [28]. The PV power generation, the loads with DR and the variations of energy markets (wholesale and local) have forecast errors of 15%, 10% and 20% respectively. In (18), the Monte Carlo method generates the scenarios. A normal distribution function is used to forecast the error ($x^{error,s}$) through historical data. The forecast errors ($x^{forecast}$) with uncertainty are represented by a normal distribution function. In the second step, 5000 scenarios are reduced to 100 using a reduction technique based on low probabilities [35].

$$X_s(t) = x^{forecast}(t) + x^{error,s}(t) \quad (18)$$

4.2. Uncertainty of driven pattern and electricity spot price for EVs

Data on EV trips and electricity spot prices for EVs use the transportation and electricity sources from New South Wales (NSW) [30]. The data on electricity spot prices is obtained from January 2016 to June 2019. They are estimated with the Australian Energy Market Operator. The time resolution is per hour and the K-means clustering is employed to forecast electricity spot prices from hour 1 to hour 24 [6]. Electricity spot prices for EVs are grouped into 10 clusters together with their probability percentages, as shown in Figure 3. The percentages represent the probability of occurrence. A similar feature is called a scenario and the prices are normalized so that the sum is unity for each day [6].

The cluster dataset identifies the EV expected visits in a specified region [6]. It is illustrated in Figure 4, EVs are group by arrival time. Then, the traffic data includes the amount of cars for a 24-hour time interval. The number of vehicles and market prices have been normalized with a value of 0.1. Cars passing in southbound and northbound areas are separated. The scenarios are produced through probability of occurrence, where each cluster has some associated feature sets. In addition, the probability of occurrence depends on the number of characteristic patterns [6].

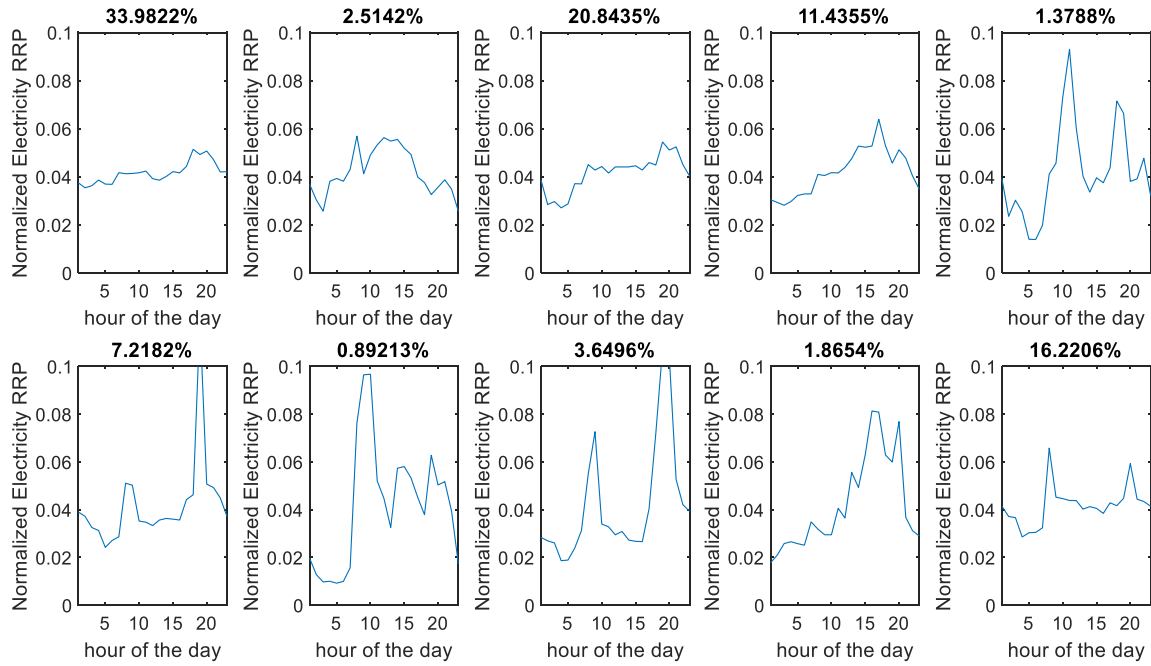


Figure 3. Clustering of scenarios to EV market

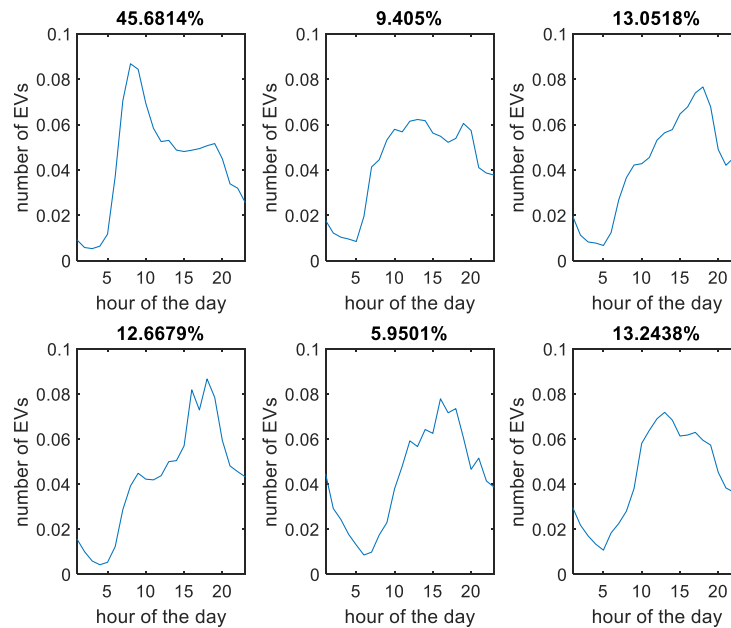


Figure 4. Clustering of scenarios for the driven pattern of EV

4.3. EVs BSS matrix with uncertainty

Scenarios of EVs arrival time from January 2016 to June 2019 in NSW are modeled and reduced to 100 stochastic scenarios. For example, the EV BSS matrix illustrates a stochastic scenario and a feasible solution. Table 3 shows the encoding for a random scenario. The charging (δ) and discharging (ζ) time are computed with Table 2. The time for charging and discharging are 8, 12, and 9 hours for Toyota, Nissan, and Mitsubishi at levels 1 A, 1 B, and 2 A, respectively. To emphasize, the decision matrix is formulated to quantify the number of fully charged batteries (Nfc), the number of batteries to charge (Nc), the number of batteries to discharge (Nd) and the number of batteries to swap (Ns). Fully charged batteries are estimated for the current (t) and previous (t-1) instant.

Table 3. Sample of EVs BSS matrix

		State of charge of 15 EVs Batteries															EVs Batteries counter					
		1	2	3	4	5	6	7	8	9	10	11	12	13	14	15	Nd	Nc	Ns	Nfc (t-1)	Nfc (t1)	Ni-Nfc (t-1)-Ns
Planning day - ahead	1	1	2	2	2	2	2	2	2	2	2	2	2	2	2	2	14	0	0	0	1	15
	2	1	2	1	1	3	3	3	3	3	3	3	3	3	3	3	11	2	0	2	3	13
	3	8	1	1	1	2	4	4	4	4	4	4	4	4	4	4	10	2	1	2	3	12
	4	7	8	9	1	1	3	3	3	3	3	5	5	5	5	5	5	7	2	1	2	12
	5	6	7	8	1	1	2	2	2	2	2	4	4	4	6	6	2	11	0	2	2	13
	6	5	6	7	8	1	1	1	1	1	1	3	3	3	5	5	0	13	1	1	6	13
	7	4	5	6	7	8	9	8	8	9	1	2	2	2	4	4	0	9	5	1	1	9
	8	3	4	5	6	7	8	7	7	8	8	1	1	1	3	3	0	14	1	0	3	14
	9	2	3	4	5	6	7	6	6	7	7	8	9	1	2	2	0	12	2	1	1	12
	10	1	2	3	4	5	6	5	5	6	6	7	8	1	1	1	0	14	0	1	4	14
	11	2	1	2	3	4	5	4	4	5	5	6	7	8	12	1	1	11	2	1	2	12
	12	1	1	1	2	3	4	3	3	4	4	5	6	7	11	9	0	13	1	1	3	13
	13	8	8	1	1	2	3	2	2	3	3	4	5	6	10	8	0	12	2	1	2	12
	14	7	7	9	1	1	2	1	1	2	2	3	4	5	9	7	0	13	1	1	4	13
	15	6	6	8	8	2	1	1	1	1	1	2	3	4	8	6	1	11	1	2	5	12
	16	5	5	7	7	1	2	2	2	2	2	1	2	3	7	5	5	10	0	0	2	15
	17	4	4	6	6	1	1	1	1	3	3	2	1	2	6	4	3	11	0	1	5	14
	18	3	3	5	5	9	1	1	1	2	2	3	2	1	5	3	2	9	1	3	4	11
	19	2	2	4	4	8	12	8	8	1	1	2	1	2	4	2	1	11	3	0	3	12
	20	1	1	3	3	7	11	7	7	9	8	1	1	1	3	1	0	12	2	1	6	12
	21	2	2	2	2	6	10	6	6	8	7	8	9	8	2	1	2	9	3	1	1	11
	22	3	3	1	1	5	9	5	5	7	6	7	8	7	1	12	2	12	1	0	3	14
	23	2	2	2	2	4	8	4	4	6	5	6	7	6	1	11	2	12	0	1	1	14
	24	1	1	1	1	3	7	3	3	5	4	5	6	5	9	10	0	14	1	0	4	14

Free spots: Swapping batteries: Penalties: 4 Total swapping: 30
 Nomenclature
 Nd: Number of batteries to discharge Nc Number of batteries to change
 Nfc Number of fully changed batteries Ns Number of batteries to swap

The SOC is calculated each hour for 24 hours with 15 batteries to swap. Vehicles such as Toyota, Nissan, and Mitsubishi use the services of BSS. The countdown decreases from 8, 12, and 9 hours (battery completely discharged) to 1 hour (battery fully charged). Regarding the charging of EV batteries, it is assumed that when the battery is swapped in BSS, it will be connected to the BSS charging point. Swapping batteries are represented by the red spots, while the free spots (blue spots) can make any decision: charging, discharging, or nothing. Regarding swapping, the aggregator does not know when the EV visits the BSS, because it depends on a random scenario. However, it can decide if it accepts or not the swapping battery. This BSS model assumes that vehicles arrive with depleted batteries. Nevertheless, the EV BSS matrix can also quantify different SOC. For example, for the Toyota brand that requires 8 hours of charge, the SOC can be replaced by a different value between one and seven for the remaining hours. The arrival of vehicles with different SOC into the BSS- can be further explored in future research.

5. RESULTS AND DISCUSSION

This section develops the case study and the results are discussed after its formulation.

5.1. Development of the case study

The structure of the problem is based on the modified case study proposed in the IEEE-CEC/GECCO 2019 competition [28]. This case study is carried out in Matlab 2016. Figure 5 shows the SMG components. Therefore, a 26-bus SMG has 5 DGs, 1 external supplier, 1 PV generation, 15 swapping batteries for EVs, 34 EVs, 90 loads with DR, and 2 ESSs. Moreover, the wholesale and local markets, and electricity spot price for EVs are considered. The capacity of energy resources is represented in Table 4. Prices of the wholesale and local markets are taken from [28], while the prices for EVs are taken from the New South Wales (NSW) electricity market given in monetary units (m.u.) per kWh [30].

The capacity of energy resources is represented in Table 4. Prices of the wholesale and local markets are taken from [28], while the prices of the EVs market are taken from the New South Wales (NSW) electricity market given in monetary units (m.u.) per kWh [30]. EVs are selected based on the market reach of top EV manufacturers. Under this context, three types of vehicles are chosen: Toyota, Nissan, and Mitsubishi. In Table 5, surveys of EVs sales allow to compute the probability of EV transit [29]. Additionally, the battery characteristics are provided in [36].

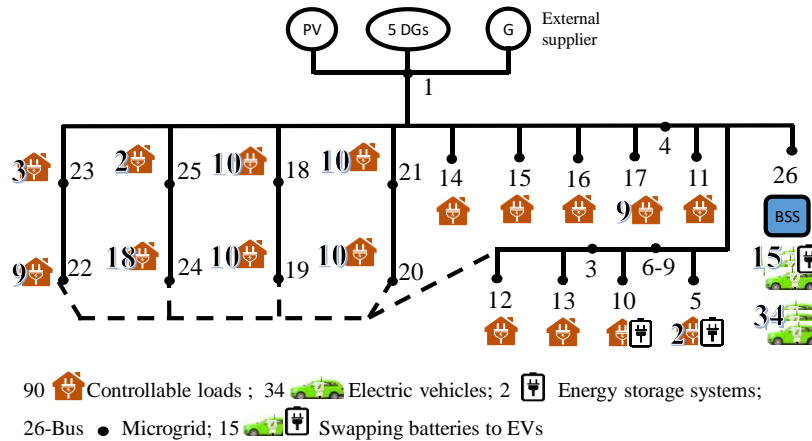


Figure 5. Representation of a 26-bus SMG

Table 4. Energy resources [28]

Energy resources	Prices (m.u.*kWh)	Capacity (kW)	Units
Dispatchable DGs	0.07-0.11	10-100	5
External suppliers	0.074-0.16	0-150	1
ESS: Charge	-	0-16.6	
Discharge	0.03	0-16.6	2
Loads with DR	0.0375	4.06-8.95	90
		Forecast (kW)	
Photovoltaic	-	0-106.81	1
Load	-	35.82-83.39	90
		Limits (kW)	
Market 1 (WS)	0.021-0.039	0-100	1
Market 2 (LM)	0.021-0.039	0-10	1
Electricity spot price (EVs)	0.014-0.119	0.0476-4.076	1

* Monetary units (m.u)

Table 5. Characteristic and transiting probability

	Price sales [29]	Percentage (%)	Cars	Battery capacity (v^{β}) (kWh) [36]	Charger rate (v^{α}) (kW)
Toyota	27,595	59	20	10	1.25
Nissan	14,715	32	11	23 [34]	3
Mitsubishi	4,166	9	3	16	1.78
Total	46,476	100	34		

5.2. Discussion of case study results

In this study case, the SMGs are optimized through the VNS-DEEPSO algorithm with 100 probabilistic scenarios. The cost is reduced by 72 % in the overall cost, which is obtained by calculating the reduction percentage of the random solution with respect to the suboptimal solution. Additionally, according to [9], the VNS algorithm is selected (simple version) and the DEEPSO algorithm is formed by the following parameters: the mutation rate, the communication probability, the population and the local DEEPSO search probability as 0.8, 0.8, 2 and 0.1, respectively. The number of evaluations is restricted to a maximum of 50,000 [28].

Results are summarized in Figure 6, where the generation is presented for a period of 24 hours (in day-ahead markets). For this period, the maximum generation is supplied by the external supplier. DG 5 has relevant participation followed by PV generation. The other generators (DG 1, DG 2, DG 3, and DG 4) have a lower participation rate. To summarize, the generation presents a stochastic generation. Load with DR is calculated by using a coefficient 10 from (9), as suggested by [32]. However, it is adjusted to 20 to avoid consumption equal to zero. The peak consumption in Figure 7 is 0.0722 kW at midday. Other peaks are found at 10 a.m., 7 p.m., and 9 p.m. with consumption of 0.0147 kW, 0.0198 kW, and 0.0117 kW, respectively. In [9], they report that the load is reduced because it is more convenient for the aggregator to carry out load shedding.

EV batteries have events such as swapping, charging, and discharging as shown in Figure 8. A BSS of EVs has 15 EV batteries and it has scheduled visits of 34 EVs at any given time. The EV batteries can be partially charged. Figure 8 shows a smooth increase in the number of battery discharge at 2 a.m. and the number of discharging batteries decreases close to zero at 9 a.m. Afterward, from 2 p.m. the number of discharging batteries increases smoothly until 11 p.m. and ends steadily.

The number of swapping batteries have stochastic behavior. It depends on the EVs visit and the EVs batteries that are accepted. The number of charging EVs batteries increases from 2 a.m. to 5 a.m. as shown in Figure 8. Then, it remains steady until 7 a.m. and decreases close to zero at 1 p.m. ESS 1 as shown in Figure 9 has a discharging peak with 0.1986 kW at 4 a.m. and a charging peak with 0.3144 kW at 9 p.m. ESS 2 has lower participation, presumably due to the use of EVs. In addition, [22] reports ESS 2 with a suboptimal solution of 0.87 kW. Transfer power in electricity spot price for EVs is computed as result of EVs matrix per average charger rate (19). This equation takes into account the average type of electric vehicle and type of charger rate.

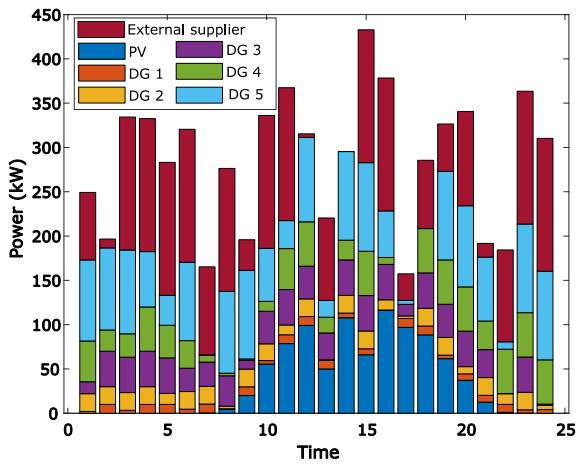


Figure 6. Power generated for 24 hours

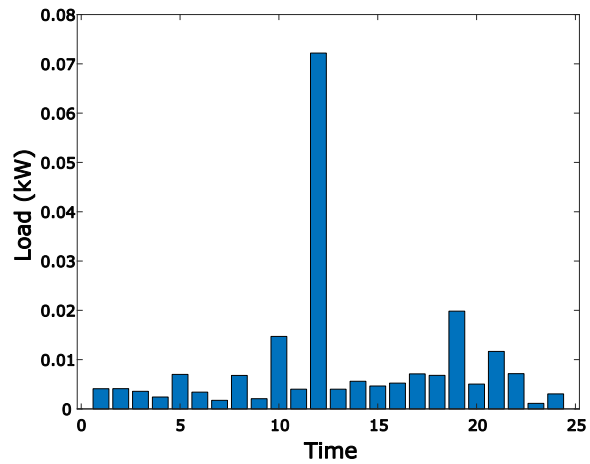


Figure 7. Consumption time of load with DR

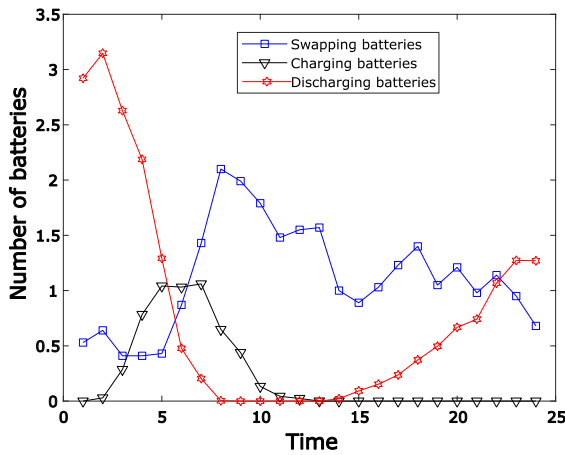


Figure 8. EV battery event programming for an average of 100 scenarios

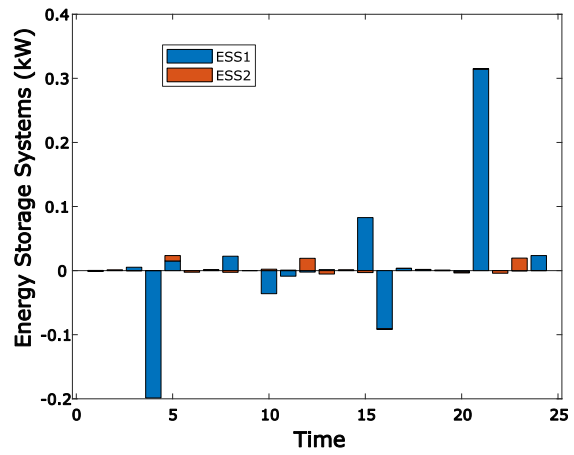


Figure 9. Planning of the energy storage system for one day

$$Average\ charger\ rate = \frac{\sum_{ev=1}^{N_s} \min(v^\alpha, v^\gamma) * ev}{N_{ev}} \tag{19}$$

Electricity markets in Figure 10 show a tendency to sell and not to buy energy for higher profits. The wholesale market has the higher participation with transactions close to 85 kW and some fluctuations. The lowest energy sale takes place at 12 p.m. Sales in the local market have fluctuations around 36 kW. The electricity spot price for EVs carries out a small percentage of transactions per day. In the ESS, this is

highlighted when there are batteries charging and discharging. The transfer power is not carried out in the EVs market, but it is performed between the same batteries of the BSS. Therefore, the energy transaction of electricity spot price for EVs shown in Figure 10 is lower.

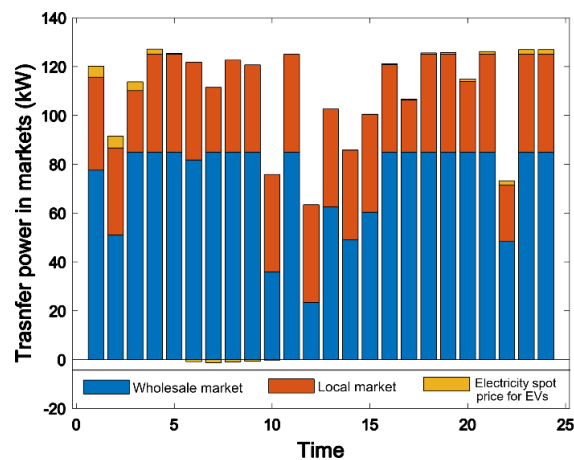


Figure 10. Electricity markets

6. CONCLUSIONS

The optimization of EVs in SMG with uncertain scenarios has not been fully explored, thus this study proposes a new methodology that involves uncertainty decisions in battery swapping stations. In the proposed method, a decision matrix is formulated to schedule EVs BSS. Furthermore, the stochastic visit is based on the K-means clustering approach. Once the visit schedule to EV BSS has been generated, idle spaces appear in the probabilistic scenarios within a decision matrix. This means that the idle spaces are generated when the charge of a battery must be mandatory.

As a result, optimization is only allowed for free spaces, that is, charging, discharging, or no action. In addition, other elements of the SMG are included in the model, such as DG, PV generation, ESS, loads with DR, and day-ahead markets. Finally, the best schedule of charging, discharging, and swapping for EVs batteries in BSS, and the transfer of power in the market are identified satisfactorily. The generation, loads with DR, and ESS are stochastic, however, the patterns are recognized of the main generators, peak hours in loads with DR (at midday), and ESS participation.

APPENDIX

Supplementary Materials

- The SMG is available online at: <http://www.gecad.isep.ipp.pt/WCCI2018-SG-COMPETITION/> and <http://www.gecad.isep.ipp.pt/ERM2019-Competition/>
- EV brands are available online at: <https://evadoption.com/ev-sales/evs-percent-of-vehicle-sales-by-brand/>. Electricity spot price for EVs is available online at: <https://www.aemo.com.au/Electricity/National-Electricity-Market-NEM/Data-dashboard>

REFERENCES

- [1] H.-Y. Mak, Y. Rong, and Z.-J. M. Shen, "Infrastructure Planning for Electric Vehicles with Battery Swapping," *Manage. Sci.*, vol. 59, no. 7, pp. 1557-1575, Jul. 2013.
- [2] L. Zhang, S. Zhou, J. An, Q. K.-I., "Demand-Side Management Optimization in Electric Vehicles Battery Swapping Service," *IEEE Access*, vol. 7, pp. 95224-95232, 2019.
- [3] H. Liu, Y. Zhang, S. Ge, C. Gu, and F. Li, "Day-Ahead Scheduling for an Electric Vehicle PV-Based Battery Swapping Station Considering the Dual Uncertainties," *IEEE Access*, vol. 7, pp. 115625-115636, 2019.
- [4] J. Yang, F. Guo, and M. Zhang, "Optimal planning of swapping/charging station network with customer satisfaction," *Transp. Res. Part E Logist. Transp. Rev.*, vol. 103, pp. 174-197, 2017.
- [5] A. Valibeygi, et al., "Robust Power Scheduling for Microgrids with Uncertainty in Renewable Energy Generation," *2019 IEEE Power Energy Soc. Innov. Smart Grid Technol. Conf.*, pp. 1-5, Feb. 2019.
- [6] W. Infante, J. Ma, X. Han, and A. Liebman, "Optimal Recourse Strategy for Battery Swapping Stations Considering Electric Vehicle Uncertainty," *IEEE Trans. Intell. Transp. Syst.*, pp. 1-11, 2019.

- [7] B. Sun, X. Sun, D. Tsang, and W. Whitt, "Optimal Battery Purchasing and Charging Strategy at Electric Vehicle Battery Swap Stations," *Eur. J. Oper. Res.*, vol. 279, no. 2, pp. 524-539, 2019.
- [8] J. Garcia-Guarin, S. Rivera, and H. Rodriguez, "Smart grid review: Reality in Colombia and expectations," *IOP Conf. Series: J. Phys. Conf. Ser.*, vol. 1257, 012011, pp. 1-7, Jun. 2019.
- [9] J. Garcia-Guarin *et al.*, "Smart Microgrids Operation Considering a Variable Neighborhood Search: The Differential Evolutionary Particle Swarm Optimization Algorithm," *Energies*, vol. 12, no. 16, pp. 1-13, Aug. 2019.
- [10] J. Garcia Guarin, F. Lezama, J. Soares, and S. Rivera, "Operation scheduling of smart grids considering stochastic uncertainty modelling," *Far East J. Math. Sci.*, vol. 115, no. 1, pp. 77-98, 2019.
- [11] J. Arévalo, F. Santos, and S. Rivera, "Uncertainty cost functions for solar photovoltaic generation, wind energy generation, and plug-in electric vehicles: mathematical expected value and verification by Monte Carlo simulation," *Int. J. Power and Energy Convers.*, vol. 10, no. 2, pp. 171-207, 2019.
- [12] Y. Cheng and C. Zhang, "Configuration and operation combined optimization for EV battery swapping station considering PV consumption bundling," *Prot. Control Mod. Power Syst.*, vol. 2, pp. 1-18, Dec. 2017.
- [13] T. Li *et al.*, "An optimal design and analysis of a hybrid power charging station for electric vehicles considering uncertainties," in *Proceedings: IECON 2018 - 44th Annual Conference of the IEEE Industrial Electronics Society*, pp. 5147-5152, 2018.
- [14] J. Li, X. Tan, and B. Sun, "Optimal Power Dispatch of a Centralized Electric Vehicle Battery Charging Station with Renewables," *IET Communications*, vol. 12, no. 5, pp. 579-585, 2018.
- [15] M. R. Sarker, H. Pandžić, and M. A. Ortega-Vazquez, "Optimal operation and services scheduling for an electric vehicle battery swapping station," *IEEE Trans. Power Syst.*, vol. 30, no. 2, pp. 901-910, Mar. 2015.
- [16] M. Hemmati, M. Abapour, B. Mohammadi-ivatloo, "Optimal scheduling of smart Microgrid in presence of battery swapping station of electrical vehicles," *Electric Vehicles in Energy Systems*, Springer, pp. 249-267, 2020.
- [17] M. Hemmati, S. Ghasemzadeh, and B. Mohammadi-Ivatloo, "Optimal scheduling of smart reconfigurable neighbour micro-grids," *IET Gener. Transm. Distrib.*, vol. 13, no. 3, pp. 380-389, Feb. 2019.
- [18] M. Hemmati, B. M.-Ivatloo, M. Abapour, and A. Anvari-Moghaddam, "Optimal chance-constrained scheduling of reconfigurable microgrids considering islanding operation constraints," *IEEE Systems Journal*, pp. 1-10, 2020.
- [19] F. Moaidi and M. A. Golkar, "Demand response application of battery swap station using a stochastic model," in *2019 IEEE Milan PowerTech, PowerTech 2019*, pp. 1-6, 2019.
- [20] W. Sutopo *et al.*, "A technical review of BMS performance standard for electric vehicle applications in Indonesia," *TELKOMNIKA (Telecommunication, Computing, Electronics and Control)*, vol. 16, no. 2, pp. 544-549, 2018.
- [21] P. J. García-Guarín, *et al.*, "Implementación del algoritmo VNS-DEEPSO para el despacho de energía en redes distribuidas inteligentes - Implementation of the VNS-DEEPSO algorithm for energy dispatch in intelligent distributed networks (in English)," *INGE CUC*, vol. 15, no. 1, pp. 142-154, 2019.
- [22] D. Dabhi and K. Pandya, "Enhanced velocity differential evolutionary particle swarm optimization for optimal scheduling of a distributed energy resources with uncertain scenarios," *IEEE access*, vol. 8, pp. 27001-27017, 2020.
- [23] E. de V. Fortes, *et al.*, "A VNS algorithm for the design of supplementary damping controllers for small-signal stability analysis," *Int. J. Electr. Power Energy Syst.*, vol. 94, pp. 41-56, 2018.
- [24] P. Hansen and N. Mladenović, "Variable neighborhood search: Principles and applications," *Eur. J. Oper. Res.*, vol. 130, no. 3, pp. 449-467, May 2001.
- [25] V. Miranda and R. Alves, "Differential evolutionary particle swarm optimization (deepso): A successful hybrid," *IEEE BRICS Congr. Comput. Intell. 11th Brazilian Congr. Comput. Intell.*, pp. 368-374, 2013.
- [26] D. G. Mayer, B. P. Kinghorn, and A. A. Archer, "Differential evolution – an easy and efficient evolutionary algorithm for model optimisation," *Agric. Syst.*, vol. 83, no. 3, pp. 315-328, Mar. 2005.
- [27] F. Marini and B. Walczak, "Particle swarm optimization (PSO): A tutorial," *Chemom. Intell. Lab. Syst.*, vol. 149, pp. 153-165, Dec. 2015.
- [28] F. Lezama, J. Soares, Z. Vale, and J. Rueda, "Evolutionary computation in uncertain environments: a smart grid application," *IEEE World Congress on Computational Intelligence 2018 – WCCI 2018*, 2018.
- [29] Automaker, "EVAoption," *Analyzing key factors that will drive mass adoption of electric vehicles*, 2019. Accessed: 29 Dec 2019. [Online]. Available: <https://evadoption.com/ev-sales/evs-percent-of-vehicle-sales-by-brand/>.
- [30] AEMO, "Electricity price and demand," *Australian Energy Market Operator*-, 2019. Accessed: 29 Dec 2019. [Online]. Available: <https://www.aemo.com.au/Electricity/National-Electricity-Market-NEM/Data-dashboard>.
- [31] J. P. Fossati, "Revisión bibliográfica sobre micro redes inteligentes," *Lit. Rev. microgrids*, vol. 9, pp. 13-20, 2011.
- [32] J. Garcia-Guarin, S. Rivera, and L. Trigos, "Multiobjective optimization of smart grids considering market power," *J. Phys. Conf. Ser.*, vol. 1409, 012006, Nov. 2019.
- [33] M. Mahoor, Z. Hosseini, A. K., "Least-cost operation of a battery swapping station with random customer requests," *Energi, Elsevier*, vol. 172, pp. 913-921, Apr. 2019.
- [34] M. Yilmaz and P.T. Krein, "Review of battery charger topologies, charging power levels, and infrastructure for plug-in electric and hybrid vehicles," *IEEE Transactions on Power Electr.*, vol. 28, no. 5, pp. 2151-2169, 2013.
- [35] J. Soares, *et al.*, "Two-Stage Stochastic Model Using Benders' Decomposition for Large-Scale Energy Resource Management in Smart Grids," *IEEE Trans. Ind. Appl.*, vol. 53, no. 6, pp. 5905-5914, Nov. 2017.
- [36] J. Ferreira, "Mobi-System: towards an information system to support sustainable mobility with electric vehicle integration," Doctoral Thesis, University of Minho, Portugal, 2013.