

Identifying Thresholds for Distance Design-based Direct Class Cohesion (D3C2) Metrics

Denny Sagita¹, Fajar Pradana², Bayu Priyambadha³

^{1,3} Informatic Engineering, Faculty of Computer Science, Brawijaya University, Indonesia

² Information System, Faculty of Computer Science, Brawijaya University, Indonesia

Article Info

Article history:

Received Mar 3, 2018

Revised Jul 20, 2018

Accepted Jul 22, 2018

Keyword:

Cohesion

Metric

Quality

Software System

Threshold

ABSTRACT

In the several phases of activity in developing a software system, there is design phase. This phase has a purpose to determine and ensure that a software requirement can be realized in accordance with customer needs. The quality of design must be a guarantee at this phase. One of an indicator of quality design is cohesion. Cohesion is the level of relatedness between elements in one component. A Higher value of cohesion can indicate that a component are more modular, has own resources, and less dependent on another component. More independent, components are easy to maintenance. There are many metrics to count how many values of cohesion in a component. One of metric is The Distance Design-Based Direct Class Cohesion (D3C2). But, many practitioners are unable to apply them. Because there is no threshold that can categories the value of cohesion. This study aims to determine the threshold of cohesion metric based on the class diagram. The result showed that the threshold of D3C2 metric is 0.41. 0.41 is the value that has the highest level of agreement with the design expert.

Copyright © 2016 Institute of Advanced Engineering and Science.
All rights reserved.

Corresponding Author:

Fajar Pradana,
Informatic Engineering,
Brawijaya University,
8 Veteran Road, 65145, Malang, Indonesia.
Email: fajar.p@ub.ac.id

1. INTRODUCTION

Software engineering offers a way to develop the qualified software. There are several phases of activity we have to do with an orderly manner. The design system is the second phase that needs to be passed in the software development process. The design phase is an important to determine and ensure that a software requirement can be realized in accordance with customer needs. The good design can be measured from the cohesiveness of the elements in the one component [1]–[3]. High cohesion can increase the stickiness of the elements in one module or component. More sticky between elements can make a component hard to be separated [2]. High cohesion can produce an individual component that has individual resources. The effort that needed in modification or maintenance of component is low, because of the low of the impact of the component to the other component. With higher cohesion, a component is more understandable, modifiable, and maintainable [2], [3]. Another side, cohesion is evenly used as an indicator of the vulnerability of the system [4].

Because of the importance of the value of cohesion, there are many researchers that have proposed a method for measuring the value of cohesion using many perspectives and purposes [2]–[8]. Several researcher works on object-oriented approach [2], [3], [5]. Class as a component in the system has a possibility to have strong or weak dependency with other class. The dependency with other class can influence the value of cohesion in the system. And, it also can influence the degree of understandability, modifiability, and maintainability of the system.

Talking about class, the class diagram is created in the design phase. The quality of the software should be guaranteed from the very first phase of the software development process. There is a metric that can be used in the design phase to guaranty the quality of design. The metric is based on the class diagram. This metric is used to find out the value of cohesion between classes in the system. The metric is The Distance Design-Based Direct Class Cohesion (D3C2) that measure the quality attributes of object-oriented design that has the purpose to level where the class member are related [2].

But, in the reality, the existence of the theory of cohesion measurement are rarely used in the real software development process. Although metrics are very useful, they have not been however, widely employed in industries[9]. Because there is no threshold of cohesion that can differ the good and bad design. There is no information about the metrics threshold that can be used by IT practitioners [11]. Software metrics can be used to control and monitor the project execution [12].

The presence study aims to determine the threshold of metric D3C2 in order to the IT practitioners are able to implement the metric in the process of development software system. The study produces the framework to find out the value of cohesions threshold. The study is done using some example of a class diagram. To find the value of the threshold, expert of class design will be involved.

2. THE DISTANCE DESIGN-BASED DIRECT CLASS COHESION (D₃C₂) METRIC

Cohesion metric is a measure of the quality attributes of object-oriented design and refers to the level where class members are related. The purpose of measurement cohesion class is to get the value of the quality of class design where a highly cohesive class is a good design [5].

Jehad [2] define a class cohesion metric called The Distance Design-Based Direct Class Cohesion (D3C2). The D3C2 metric uses the Direct Attribute Type (DAT) matrix to measures the interaction caused by sharing attribute type between method, interaction caused by the expected use of attribute within method and interaction between attribute and method [2]. There are three different type of cohesion caused by three type of interaction : Method-Method through Attribute Cohesion (MMAC), Attribute-Attribute Cohesion (AAC), and Attribute-Method Cohesion (AMC). D3C2 metrics weighting from final calculation of MMAC, AAC, and AMC. Tables and Figures are presented center, as shown below and cited in the manuscript.

2.1. Method-Method through Attributes Cohesion (MMAC) Metrics

MMAC is a process of calculating the data were taken from the direct matrix attribute type. This method can produce an average value of cohesion in the program is based on a couple of methods. and it is calculated as follows

$$MAC = \begin{cases} 0 & \text{if } k = 0 \text{ or } l = 0, \\ 1 & k = 1, \\ \sum_{i=1}^l \frac{x_i(x_i-1)}{l_k(k-1)} & \text{otherwise.} \end{cases} \quad (1)$$

Where x is a number of value 1 in the column, j number of the method in the matrix, and l number of the attribute.

2.2. An Attribute-Attribute Cohesion (AAC)

AAC is a process of calculating the data were taken from the attribute matrix type. This method can produce an average value of cohesion in the program based on the pair attributes and it is calculated as follows

$$AC = \begin{cases} 0 & \text{if } k = 0 \text{ or } l = 0, \\ 1 & k = 1, \\ \sum_{i=1}^k \sum_{j=i}^l \frac{y_i(y_i-1)}{k_l(l-1)} & \text{otherwise.} \end{cases} \quad (2)$$

x is a number of value 1 in rows, j number of the method in the matrix, and l number of the class attribute.

2.3. Attribute-Method Cohesion (AMC)

A process of calculating the data was taken from the attribute matrix type. This method can produce an average value of cohesion in the program based on the interaction of attributes and methods. It is calculated as follows.

$$AMC = \begin{cases} 0 & \text{if } k = 0 \text{ or } l = 0 \\ \frac{\sum_{i=1}^k \sum_{j=1}^l m_{ij}}{kl} & \text{otherwise.} \end{cases} \quad (3)$$

Where I number of rows in the matrix, j number of columns in the matrix, k number of the method in the matrix l number Attribute to the matrix

2.4. The Distance Design-Based Direct Class Cohesion (D3C2) Metric

The D3C2 metric is defined as the weighted summation of the MMAC, AAC, and AMC metrics [5]. The D3C2 is defined as follows:

$$D_3C_2 = \begin{cases} 0 & \text{if } k = 0 \text{ and } l = 1, \\ 1 & \text{if } k = 0 \text{ and } l = 0, \\ \frac{k(k-D)MMAC + l(l-1)AAC + 2lkAMC}{k(k-D) + l(l-1) + 2lk} & \text{otherwise.} \end{cases} \quad (4)$$

where MP is the number of method pairs, and AP is the a number of distinct attribute-types pairs

3. COHEN'S KAPPA COEFFICIENT

Cohen's kappa coefficient proposed by Jacob Cohen in 1960 are coefficients to evaluate the agreement between the two assessors or assessment methods. Cohens's kappas measure the degree of agreement and takes into account the correct classification that may have been obtained by chance by weighting the measured accuracies [13]. Cohen's Kappa is a method of measuring the correctness of the data [14]. Cohen's kappa coefficient defined formally as follows:

$$K = \frac{P_o - P_c}{1 - P_c} \quad (5)$$

Where Po the proportion of the similarity of observation and Pc is the proportion expected by chance. Then, the data obtained from observations of two observers described counted to get the Kappa coefficient. Then, the result can be interpreted as describe in Table 1.

Table 1. Interpretation Table of Kappa Coefficient [15]

Kappa	Portion of Agreement
< 0	less than chance agreement
0.01 – 0.20	slight agreement
0.21 – 0.40	fair agreement
0.41 – 0.60	moderate agreement
0.61 – 0.80	substansial agreement
0.81 – 1	almost perfect agreement

4. METHODOLOGY

The determination of cohesion threshold is done in the iterative process. The aim is to get the threshold of the metric value of D3C2. The value of D3C2 metric is between 0-1. We have to find out where is the value that is a boundary between good or bad design. The expert is involved in the process of determining the threshold. The flow of the process is described in figure 1.

To do all of the processes, we have to collect several codes that have been counted the value of D3C2 metric. All of the codes has been labeled as a good or bad code by the expert. Then the flow that described on Figure 1 is applied.

First is to specify the value of the temporary threshold. Based on the threshold, every code will be labeled as good or bad. Then match the labeled code with the result from the expert. Kappa coefficients are counted to aim the degree of agreement between labeled code and the result from an expert.

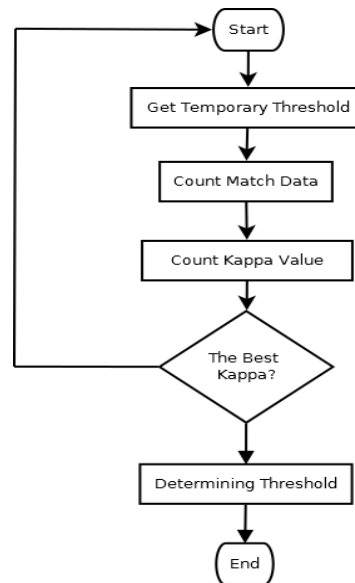


Figure 1. The Flow of Determining Threshold

The process is done iteratively until the best score of Kappa coefficient is obtained. After the best Kappa is found, the final process is determining the threshold. The best Kappa means that in that's point of threshold, the degree of agreement between system and expert is highest. A lot of data has conformance result with the expert

5. DATASET AND TESTING SCENARIO

The data used in this study are 50 classes downloaded from varying source from the internet. The following is a list of websites that become a source: creately.com, ibm.com, code-project.com, kuwatalab.com, javaworld.com, and javacodegeeks.com. Every class has a variety of method and attribute. This sample class is generated to the XML format with Visual Paradigm Software. There are two scenarios to identify the threshold, first scenario, we will test 50 class using a software application call Cohesion Application Meter shown as Figure 2 to calculate the value of cohesion. This software is implemented D3C2 metric to evaluate data class sample from XML format based on java platform.

The second scenario is we ask for an expert software designer to test the same data class and determine whether each class tested had good or bad cohesion. The main purpose of this test is to determine the similarity between cohesion measurements carried out by experts and tested by using the system.

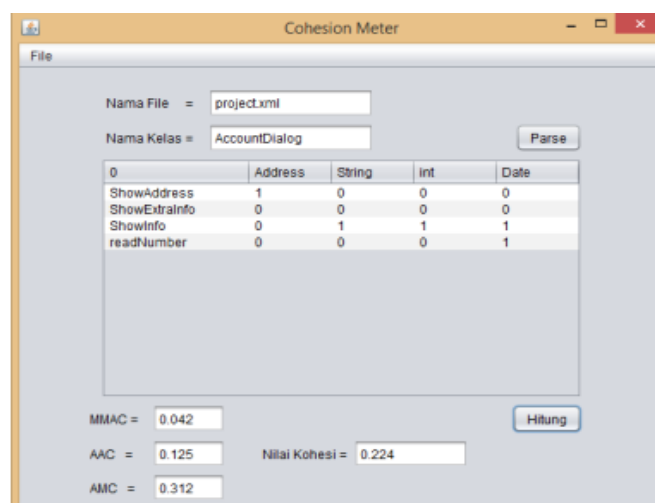


Figure 2. Cohesion Meter Application

6. RESULT AND ANALYSIS

6.1. First Scenario Result

In the first scenario, we perform by calculating 50 data set class diagrams to the Cohesion Meter Application. We collect data set from varying source from internet. All class diagram is redraw by using Computer Aided Software Engineering (CASE) called Visual Paradigm for getting class diagram in XML Format. Cohesion Meter Application is java based software for calculate cohesion value from class digram in XML Format. We implement the D3C2 metrics for calculate the cohesion value. In identifying the attributes and operations, we used xpath function taken from javax.xml.xpath library. XPath, where this function is used to parse the contents of files of type xml to configure the tag you want to read, both attributes, operations and relationships between the two. So that the process of identifying the attributes and operations can be easily read by the application.

Figure 3 shows the results of calculation of the value of the cohesion generate from cohesion meter application. The cohesion value produced has a minimum scale of 0 to value the maximum is 1. In this test there are 17 data test that has value cohesion 0, which means the method on 17 data test has no parameters and return type at all.

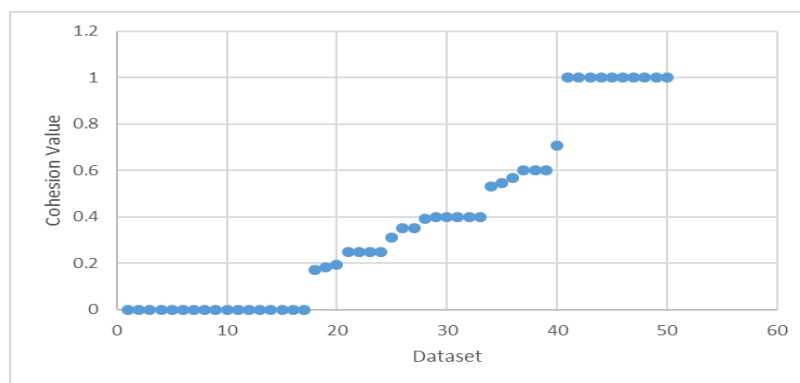


Figure 3. Results of calculation from cohesion meter

6.2. First Scenario Result

In the second scenario we involved expert to ensure a cohesion value of the class that is used as a data sample in the test application has a high degree of cohesiveness or not. Experts will examine one by one sample class without notice or see the test results from the application of cohesion meters.

Table 2. Kohens Kappa

KOHENS KAPPA			
Expert			
System	Good	Bad	Total
Good	12	5	17
Bad	15	18	33
Total	27	23	50

Based on measurements taken by the experts shown in Table 2, there are 27 class has a good level of cohesiveness and the 23 class has a poor level of cohesiveness. From the results of the first and second scenarios test, can be taken a scenario analysis results that the class of 50 samples tested by experts and there are 12 classes of applications that agreed to have high cohesion value and 18 class agreed with a low cohesion value. While there are 20 classes that identified produce different grades cohesion between applications and experts.

6.3. Determining Threshold Values

The value of cohesion that has been defined by Dallal is a range of 0.1 - 1. Cohesion value closes to 1, the better, and vice versa. This value range is used as a temporary threshold. The iteration process is done ten times according to the value range of 0.1-1. Each became a limit values of cohesion calculation result of each class is good or not good. The amount of data is good and not good will be adjusted to the results of

expert analysis. The amount of data is good and not good will be the basis for calculating Kappa coefficient. Figure 4. Shows the correlation between temporary threshold and Kappa coefficient calculation results.

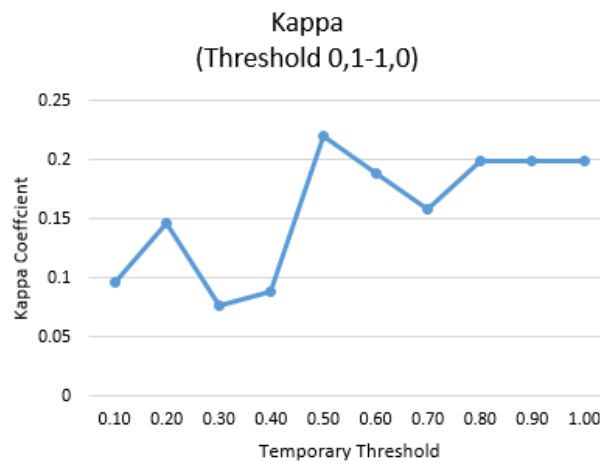


Figure 4. Kappa Experiment 1

The calculation results of kappa coefficient value from range 0.1 to 1 indicate different values. The threshold value of 0.5 has the highest kappa coefficient, 0.22. At 0.5, the degree of agreement between the expert system and is the highest.

The calculation is performed again at a more detailed level. The threshold used is a range between 0.41 to 0.55. In this second iteration, is done to see or look for a more detailed threshold value. The process is performed similarly to the first iteration. The results of the second iteration depicted in Figure 5.



Figure 5. Kappa Experiment 2

In the Figure 5, looks value of 0.41 to 0.53 has the same values as high as 0.219. On the threshold of 0.54 kappa values began to decrease. From the picture concluded that, the value of 0.41 was determined to be a threshold value of a class cohesion.

7. DISCUSSION

Threshold calculation is done by looking to the highest level of agreement between the system and expert. The results of this experiment is to determine the threshold of 0.41, was the coefficient value that have the highest Kappa. It can be concluded that under the cohesion value of 0.41 means that a class has classified cohesion level is not good, and, cohesion value above or equal to 0.41 means that the level of cohesion of the class is good enough.

The threshold value of 0.41 has a Kappa coefficient of 0.22. These values can be interpreted that the agreement between the system and the expert is enough (Fair Agreement). This value is not a good enough

value when seen from Kappa value mapping. There is a difference of 0.78 to make so a perfect score. Some things can be captured as a cause of disagreement between the system and the expert.

Expert assess the level of cohesion of a class based on experience. The level of cohesion of a class is the degree of closeness between the elements in the class. These elements are the attributes and methods of a class. If the closeness between the attributes and methods of a class higher then it can be said that a high level of class cohesion. If all the attributes are managed by the whole method which is owned by the class, it can be concluded that the closeness between the method and attributes is high. D3C2 Metrics only look at the data type of the parameter from a method. If the data type of a method is the same as the data type of the attributes of the class, then it is assumed that the method to manage these attributes.

However, experts are not as simple as that in assessing the proximity between the methods and attributes. Clearer information needed, whether it is true that an attribute is managed by a method. Not only on the basis of similarity type it. Because the type parameter of a method can be a source of other data that is not an attribute of a class. The certainty whether the method really manage attributes can be seen from the source code of the method. However, a limitation of this study is the level design in which the determination is based on the cohesion of the class diagram only. In this case, there should be a more in-depth information that can be extracted from the class diagram, which shows that a method is definitely manage an attribute.

In the process of analyzing a class, an expert view of some things. In addition to the same parameter types with attribute types, experts also see from the naming attributes and methods. Naming similarity or similarity of meaning between the same naming attributes and methods can be assumed that the methods to manage these attributes. As well as some of the features provided by the Java language programming tools, which users can perform automatic code generation based on attributes that have been defined. Generation of getters and setters are often used by developers to make it easier to define methods. Naming method customized with the name of the generation of the attributes that have been defined. There is a mismatch between the matrix cohesion perspective used by the expert perspective in analyzing the class in the level design. In future work, needs to be add some aspect like the similarity meaning from attribute and method for calculating cohesion.

8. CONCLUSION

Based on research that has been done it can be concluded as follows:

1. In identifying the attributes and operations, we used xpath function taken from javax.xml.xpath library. XPath, where this function is used to parse the contents of files of type xml to configure the tag you want to read, both attributes, operations and relationships between the two. So that the process of identifying the attributes and operations can be easily read by the application
2. Determining successful or unsuccessful on the testing of test data determined on cohesion values obtained from the calculation Cohesion Application Meter is > 0.00 . Analysis of 66% of the 50 test data indicate the success calculation that generates a value of cohesion. Meanwhile, 34% of the 50 test data shows there is no relation to the cohesion of the class diagram.
3. In order to determine a measurable criterion in ensuring the cohesion values in a class, we determined the threshold using the approach Cohens's Kappa and can be drawn a conclusion that the value of 0.41 is the best threshold value for predicting a value of cohesion

ACKNOWLEDGEMENTS

The authors gratefully acknowledge the Laboratory team of Software Engineering in Faculty of Computer Science. This work was supported in part by the State Budget - Operational Assistance Universities Scheme (Grant no.: 2201.1 I/UN I0.36/PG/2015)

REFERENCES

- [1] R. S. Pressman, *Software Engineering : A Practitioner's Approach*, Seventh Ed. McGraw-Hill, 2015.
- [2] J. Al Dallal, "A design-based cohesion metric for object-oriented classes," *Int. J. Comput. Sci.*, vol. 1, no. 3, pp. 195–200, 2007.
- [3] J. Al Dallal and L. C. Briand, "An object-oriented high-level design-based class cohesion metric," *Inf. Softw. Technol.*, vol. 52, no. 12, pp. 1346–1361, 2010.
- [4] I. Chowdhury and M. Zulkernine, "Using complexity, coupling, and cohesion metrics as early indicators of vulnerabilities," *J. Syst. Archit.*, vol. 57, no. 3, pp. 294–313, 2011.
- [5] J. Al Dallal, "Measuring the discriminative power of object-oriented class cohesion metrics," *IEEE Trans. Softw. Eng.*, vol. 37, no. 6, pp. 788–804, 2011.
- [6] Z. Chen, Y. Zhou, B. Xu, J. Zhao, and H. Yang, "A Novel Approach to Measuring Class Cohesion Based on Dependence Analysis," *Int. Conf. Softw. Maint.*, pp. 377–384, 2002.

- [7] B. Silva, C. Sant'anna, N. Rocha, and C. Chavez, "The effect of automatic concern mapping strategies on conceptual cohesion measurement," *Inf. Softw. Technol.*, vol. 75, pp. 56–70, 2016.
- [8] Y. Yang, Y. Zhao, C. Liu, H. Lu, Y. Zhou, and B. Xu, "An empirical investigation into the effect of slice types on slice-based cohesion metrics," *Inf. Softw. Technol.*, vol. 75, pp. 90–104, 2016.
- [9] M. A. Torkamani, "Metric Suite to Evaluate Reusability of Software Product Line", *International Journal of Electrical and Computer Engineering (IJECE)*, Vol 4, No.2, pp 285-294. 2014
- [10] K. A. M. Ferreira, M. A. S. Bigonha, R. S. Bigonha, L. F. O. Mendes, and H. C. Almeida, "Identifying thresholds for object-oriented software metrics," *J. Syst. Softw.*, vol. 85, no. 2, pp. 244–257, 2012.
- [12] M. Bhardwaj and A. Rana, "Key Software Metrics and its Impact on each other for Software Development Projects", *International Journal of Electrical and Computer Engineering (IJECE)*, Vol 6, No.1, pp 242-248. 2016
- [13] Prasad, S, Savithri S, Krishna "Comparison of Accuracy Measures for RS Image Classification using SVM and ANN Classifiers" , *International Journal of Electrical and Computer Engineering (IJECE)*, Vol 7, No.3, pp 1180-1187. 2017.
- [14] J. Sim and C. C. Wright, "The Kappa Statistic in Reliability Studies: Use, Interpretation, and Sample Size Requirements," *Phys. Ther.*, vol. 85, no. 3, pp. 257–68, Mar. 2005.
- [15] J. R. Landis and G. G. Koch, "The Measurement of Observer Agreement for Categorical Data," *Int. Biometric Soc.*, vol. 33, no. 1, pp. 159–174, 1977.

BIBLIOGRAPHIES OF AUTHORS



Denny Sagita Rusdianto, has received his Bachelor of Computer from Brawijaya University. He also has got Master of Computer from 10 November Institute of Technology Surabaya. He is currently a member of Software Engineering Research Group (SERG) in Faculty of Computer Science, Brawijaya University. His current research interest is Software Engineering, Requirement Engineering, Software Testing, Software Design, Game & Simulation Development.



Fajar Pradana, has received his Bachelor of Applied Science from Electronics Engineering Polytechnic Institute of Surabaya. He also has got Master of Engineering from Electro Engineering from Gadjahmada University Jogjakarta. He is currently a member of Software Engineering Research Group (SERG) in Faculty of Computer Science, Brawijaya University. His current research interest is Software Engineering, Requirement Engineering, Software Design, Software Testing, and Software Maintenance



Bayu Priyambadha, has received his Bachelor of Computer from 10 November Institute of Technology Surabaya. He also has got Master of Computer from 10 November Institute of Technology Surabaya. He is currently a member of Software Engineering Research Group (SERG) in Faculty of Computer Science, Brawijaya University. His current research interest is Software Engineering, Requirement Engineering, Software Design, Software Testing, Software Maintenance, Software Evolution.