

*International Journal of Advances in Pharmaceutical Analysis*

IJAPA Vol. 2 Issue 1 (2012) 19-23

Journal Home Page <http://www.ssijournals.com/index.php/ijapa>**SIMULTANEOUS ESTIMATION OF SIMVASTATIN AND SITAGLIPTIN BY USING DIFFERENT ANALYTICAL METHODS****D. Phaneendra\***, V. Venkatesh, Ramarao N.*Chalapathi institute of pharmaceutical sciences, Lam, Guntur, India***Abstract**

Simple accurate and precise Spectrophotometric methods have been developed for simultaneous estimation of Simvastatin (SIM) and Sitagliptin (SITA) by employing three methods. Method A was simultaneous equation method; the method involves formation and solving the simultaneous equation using 238 nm and 267 nm as two wavelengths for SIM and SITA respectively. Method B was first order derivative spectrophotometry. The first order derivative absorption at 230 nm (zero crossing point of SITA) was used for SIM and 275nm (zero crossing point of SIM) was used for SITA. Method C involved Q-absorption analysis based on the measurement of absorbance at two wave lengths that is the  $\lambda_{max}$  of SITA 267 nm and isoabsorptive point of both drugs at 250 nm. The three methods obeyed the Beer's law in the concentration range of 3-15  $\mu\text{g/ml}$  for SIM and 50-150  $\mu\text{g/ml}$  for SITA. The methods were validated statistically and recovery studies were carried out to confirm the accuracy of the method.

**Keywords:** Simvastatin, Sitagliptin, Simultaneous Equation Method, First Derivative Spectrophotometry, Q-Absorption Analysis

**1. Introduction**

**1.1. Sitagliptin:** SITA is the first of a new class of drugs for the treatment of type two diabetes, chemically it is known as (R) -4-oxo - 4- [3-(trifluoromethyl) -5,6- dihydro [1,2,4]triazolo [4,3-a]pyridine -7(8H)-yl ]-1-(2,4,5-trifluoro phenyl )butan-2-amine. It reduces blood glucose concentrations by enhancing the effect of incretins. Incretins are hormones (chemicals) which are produced by the (bowel) in response to food. These drugs are therefore also known as incretin enhancers. SITA can be estimated by different analytical and bio-analytical techniques, they are first order derivative<sup>1</sup>, simultaneous estimation<sup>2</sup>, UPLC<sup>3</sup>, Spectrophotometry<sup>4,5</sup>, bio-analytical<sup>6</sup>, mass spectrometry<sup>7</sup>, spectrofluorimetry<sup>8</sup>.

**1.2. Simvastatin:** SIM belongs to a class of drugs called HMG-coA reductase inhibitors commonly called statins. It is chemically known as (1S, 3R, 7S, 8S, 8aR)-8-{2-[(2r, 4r)-4-hydroxy-6-oxotetrahydro-2H-pyran-2yl] ethyl}-3, 7-dimethyl-1, 2, 3, 7, 8,8a-hexahydronaphthalen-1-yl]2, 2-dimethyl butanoate. All statins act by inhibiting 3-hydroxy-3-methylglutaryl coenzyme A HMG-CoA reductase, the rate limiting enzyme of the HMG-CoA reductase path way, the metabolic path way responsible for the endogenous production of cholesterol mainly used for the treatment of dislipidimia and the prevention of cardiovascular diseases. SIM can be estimated

by different analytical techniques, they are RP-HPLC<sup>9,10,11,12</sup>, derivative Spectrophotometry<sup>13</sup>, spectrophotometry<sup>14,15</sup>, second order derivative<sup>16</sup>, LC-MS/MS<sup>17</sup>.

**2. Experimental**

**2.1. Materials (Instrumentation):** LABINDIA UV 3092 UV- Visible double beam spectrophotometer with a fixed slit width 1 nm and 1 cm matched quartz cells was used for all the spectral measurements

**2.2. Reagents:** Analytical grade Alcohol, distilled water.

**2.3. Preparation of standard stock solutions:** A standard SIM stock solution (100 $\mu\text{g/ml}$ ): Standard SIM (10 mg) was dissolved in 10 ml of alcohol. The solution was further diluted with water to obtain 100  $\mu\text{g/ml}$ .

Standard stock solution SITA solution (100 $\mu\text{g/ml}$ ): Standard SITA 10 mg was sonicated in 10 ml of alcohol. The solution was diluted with water to obtain 100 $\mu\text{g/ml}$ .

**2.4. Sample preparation:** 10 tablets were taken and accurately weighed and weight equalent to 10 mg of SIM was taken and dissolved in 10 ml of alcohol.

**2.5. Method A**

**Simultaneous Equation Method:** For selection of analytical wavelength for Simultaneous Equation Method; standard solutions of SIM (100  $\mu\text{g/ml}$ ) and SITA (100  $\mu\text{g/ml}$ ) were scanned in the range of 220 to 400 nm. Fig C

represents the overlain spectrum of both drugs. Wavelengths 238 and 267 nm i.e. the  $\lambda_{max}$  of SIM and SITA respectively for the simultaneous equation (fig A & B). All the solutions were measured at both the wavelengths 238 and 267nm respectively. Absorptivities at each wavelength for SIM and SITA were determined and used to form the equation, the absorbance and the absorptivities values at particular wavelengths were submitted in the following equation to obtain the concentration.

$$C_x = (A_2a_{y1} - A_1a_{y2}) / (a_{x2}a_{y1} - a_{x1}a_{y2})$$

$$C_y = (A_1a_{x2} - A_2a_{x1}) / (a_{x2}a_{y1} - a_{x1}a_{y2})$$

CX = concentration of SIM

CY = concentration of SITA

A1=absorbance of samples at 238 nm.

A2= absorbance of samples at 267 nm.

ax1 is the absorptivity of SIM at 238nm.

ax2 is the absorptivity of SIM at 267 nm.

ay1 is the absorptivity of SITA at 238 nm.

ay2 is the absorptivity of SITA at 267 nm.

**2.6. Method B:** Standard stock solutions (100  $\mu\text{g/ml}$ ) of SIM and SITA were prepared separately with water to obtain concentration range of 3-15 $\mu\text{g/ml}$  for SIM and 50-150 $\mu\text{g/ml}$  for SITA. For all solutions the derivative spectra were obtained over 220-400 nm range. From the overlain spectrum of both the drugs (Fig.1) wavelengths were selected. At 230 nm there were well developed first order derivative absorption spectra for varying concentrations of SIM for its determinations (fig.2) and no interference was observed by SITA as  $D_1=0$  (fig.2a) so any change in SITA concentration has no effect on quantitative determination of SIM.

To determine SITA the first order derivative spectra were used by making measurement at 275 nm (fig3) at which  $D_1=0$  for SIM. NO SIM interference was found even at different concentrations (fig3a) for quantitative determination of SITA. The calibration curves were constructed by plotting drug concentration versus absorbance values of first derivative spectrum ( $D_1$ ) 230 nm for SIM and 275 nm for SITA. Statistical data for calibration curve is depicted in (Table 1). The concentration of individual drugs present in the mixture (Fig 4) was determined from the calibration curve in quantization method.

**2.7. Method C: Absorbance Ratio method:** The working standard stock solutions of SIM and SITA were scanned in the range of 220-400 nm against water as blank. Isoabsorptivity point was found at 250 nm (Fig C) and another

wavelength used was 267 nm which is  $\lambda_{max}$  of SITA calibration curve was plotted over a concentration range of 3-15 $\mu\text{g/ml}$  for SIM and 50-150  $\mu\text{g/ml}$  for SITA. The absorbance of each solution was measured at both the wavelengths 250nm and 267 nm. Concentrations of SIM and SITA were determined using the following simultaneous equation.

$$CX = (QM-QY)*A1 / (QX-QY)*aX1$$

$$CY = A1/ax1 - CX$$

Where A1 and A2 are absorbance's of the mixture at 250 nm and 267 nm respectively; ax1 and ay1 are absorptivities of SIM and SITA respectively at 250 nm and ax2 and ay2 are absorptivities of SIM and SITA respectively at 267 nm ;

$$QM = A2/A1, \quad QX = AX2/AX1 \quad \text{AND} \\ QY = AY2/AY1.$$

### 3. Results and Discussion

#### 3.1. Validation:

**3.1. A. Linearity range:** Calibration curves constructed were linear over the selected range of 3-15  $\mu\text{g/ml}$  and 50-150 $\mu\text{g/ml}$  for SIM and SITA respectively. Each concentration was repeated three times. The assays were performed according to experimental conditions and the linearity of the calibration graphs were validated by the high value of the correlation coefficient and the intercept value.

**3.1. B. Accuracy:** Accuracy of the methods was assured by standard addition technique involving analysis of samples to which certain amounts of authentic drugs were added. The resulting mixtures were assayed and compared with those expected. Recovery studies were given in (Table 2).

**3.1. C. Precision:** For evaluations of precision repeatability of the results were evaluated by 6 replicate determinations. The coefficient of variations (%CV) values at these concentration levels were calculated.

**3.1. D. Limit of Detection & Limit of Quantification:** Limit of detection for SIM and SITA were found to be 0.121 $\mu\text{g/ml}$ , 0.213 $\mu\text{g/ml}$  and 0.314 $\mu\text{g/ml}$ . Limit of quantification for SIM and SITA were found to be 0.265 $\mu\text{g/ml}$ , 0.456 $\mu\text{g/ml}$ , 0.654 $\mu\text{g/ml}$ .

**3.1. E. Application to the pharmaceutical dosage form:** The proposed methods were validated successfully to determine SIM and SITA in tablets. No interference of excipients were made, therefore the proposed methods were employed for simultaneous estimation of SIM and SITA.

### Conclusion

The proposed methods are simple accurate and precise to determine the quantitative estimation of SIM and SITA.

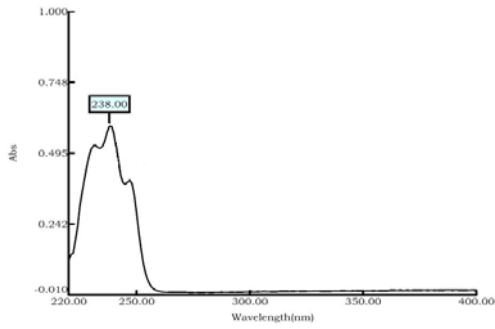
### Acknowledgements

The authors are thankful to Cipla Pharmaceuticals Pvt.Ltd. The authors are grateful to the management of Chalapathi Institute of Pharmaceutical Sciences, Guntur.

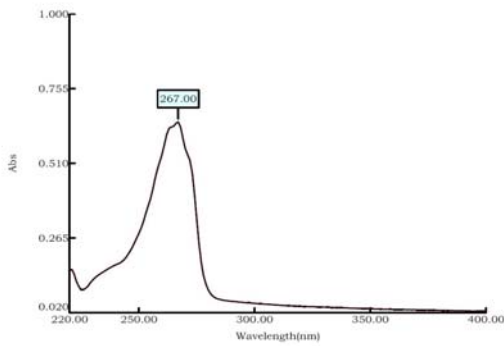
### References

- Jain Pritam, Chaudhari Amar, Desai Bhargav, Patel Shani, Patel Santsaran, Shimpi Hiren. Development and validation of first order derivative UV-Spectrophotometric method for determination of Sitagliptin in bulk and in Formulation. *Int. J. Drug Dev. & Res.* 2011; 3(4):194-199.
- Ghazala Khan, Dinesh Sahu, Y. P. Agrawal, Neetu Sabarwal, Avnish Jain and A. K. Gupta. Simultaneous Estimation of Metformin and Sitagliptin in Tablet Dosage Form. *Asian Journal of Biochemical and Pharmaceutical Research* .2011; 2 (1):352-358.
- Chellu S. N, Malleswararao, Mulukutla V. Suryanarayana. Simultaneous Determination of Sitagliptin Phosphate Monohydrate and Metformin Hydrochloride in Tablets by a validated UPLC Method. *Sci pharm.* 201 xs; 8x: xxx-xxx, 2011; 1-14.
- Bala Sekaran. C, Prameela Rani A. Development and validation of Spectrophotometric Method for the Determination of DPP4 Inhibitor Sitagliptin, In Its Pharmaceutical Dosage Forms. *Int J Pharm Pharm Sci.* 2010; 2(4): 138-142.
- Parag Pathade, Md Imran1, Vinod Bairagi and Yogesh Ahire. Development and Validation of Stability indicating UV Spectrophotometric method for the estimation of Sitagliptin phosphate in bulk and tablet dosage form. *Journal of Pharmacy Research* .2011; 4(3): 871-873.
- Wei Zeng, Donald G. Musson1, Alison L. Fisher, Li Chen, Michael S. Schwartz, Eric J. Woolf, Amy Qiu Wang *et al.* Determination of Sitagliptin in Human Urine and Hemodialysate Using Turbulent Flow Online Extraction and Tandem Mass Spectrometry. *Journal of Pharmaceutical and Biomedical Analysis.* 2008; 46:534-542.
- John g. Swales, Richard T. Gallagher, Mark Denn, Raimund M. Peter. Simultaneous Quantitation of Metformin and Sitagliptin from Mouse and Human Dried Blood Spots Using Laser Diode Thermal Desorption Tandem Mass Spectrometry. *Journal of Pharmaceutical and Biomedical Analysis.* 2011; 55:544-551.
- Ramzia I. El-Bagary, Ehab F. Elkady, Bassam M. Ayoub. Spectrofluorometric and Spectrophotometric methods for the determination of Sitagliptin in Binary mixture with Metformin and Ternary mixture with Metformin and Sitagliptin Alkaline Degradation Product. *International journal of biomedical science.* 2011; 7(1):62-69.
- P Bonde, S Sharma, N Kourav, AM Attar. Development and validated UV spectrophotometric and RP-HPLC methods for the estimation of simvastatin and ezetimibe in combined pharmaceutical dosage form. *Inter J Curr Trends Sci Tech.* 2010 ; 1(3): 135-142.
- D. Anantha Kumar, D. P. Sujana, V. Vijayasree and J. V. L. N. Seshagiri rao. Simultaneous Determination of Simvastatin and Ezetimibe in Tablets by HPLC. *E-Journal of Chemistry.* 2009;6(2):541-544.
- Hazem Ali, Sami Nazzal. Development And Validation of a Reversed-Phase HPLC Method for the Simultaneous Analysis of Simvastatin and Tocotrienols in combined dosage forms. *Journal of Pharmaceutical and Biomedical Analysis.* 2009; 950-956.
- Mohamed Hefnawy, Mohammed Al-Omar, Saeed Julkhuf. Rapid And Sensitive Simultaneous Determination of Ezetimibe and Simvastatin from their combination Drug Products by Monolithic Silica High-Performance Liquid Chromatographic Column. *Journal of Pharmaceutical and Biomedical Analysis.* 2009; 50: 527-534.
- Effat Soury, Masoud Amanlou. Development and Validation of a Derivative Spectrophotometric Method for Simultaneous Determination of Simvastatin and Ezetimibe. *E-Journal of Chemistry.* 2010; 7(S1): S197-S202,
- Nilesh Jain, Ruchi jain, Hemant swami, Sharad Pandey and Deepak Kumar Jain. Spectrophotometric Method for Simultaneous Estimation of Simvastatin and Ezetimibe in Bulk Drug and its combined dosage form. *International journal of pharmacy and pharmaceutical sciences,* july-sep. 2009; 1 (1): 170-175.
- S balaji and A sunitha. Development and Validation of Spectrophotometric method for Simultaneous Determination of Simvastatin and Ezetimibe in Tablet Formulations. *Pak. J. Pharm. Sci.,* 2010; 23(4): 375-378.
- Lei Wang, Mandana Asgharnejad. Second-Derivative UV Spectrometric Determination of Simvastatin in Its Tablet Dosage Form. *Journal of Pharmaceutical and Biomedical Analysis.* 2000; 21:1243-1248.
- Mohammed Jemal, Zheng Ouyang, Mark L. Powell. Direct-Injection LC-MS-MS Method for High-Throughput Simultaneous Quantitation of Simvastatin and Simvastatin Acid in Human Plasma. *Journal of Pharmaceutical and Biomedical Analysis.* 2000; 23: 323-340

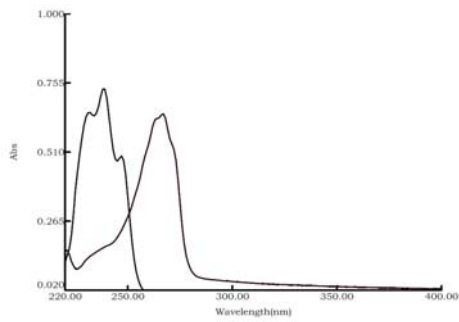
**Fig A. spectrum of SIM at 238 nm.**



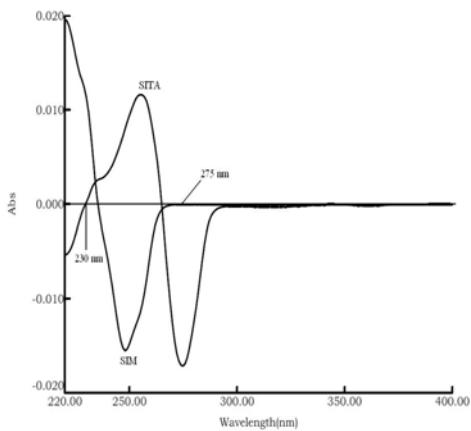
**Fig B. spectrum of SITA at 267 nm**



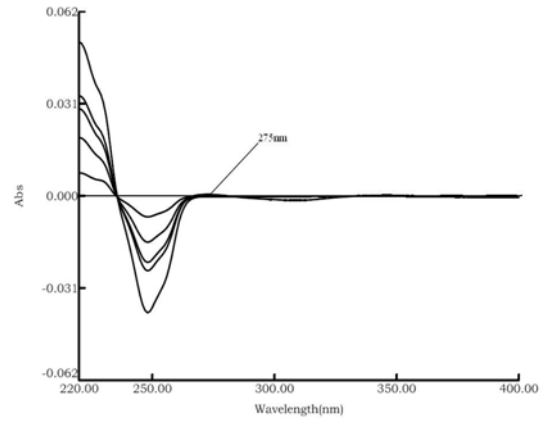
**Fig C: overlain spectra of SIM and SITA showing iso-absorptive point at 275 nm**



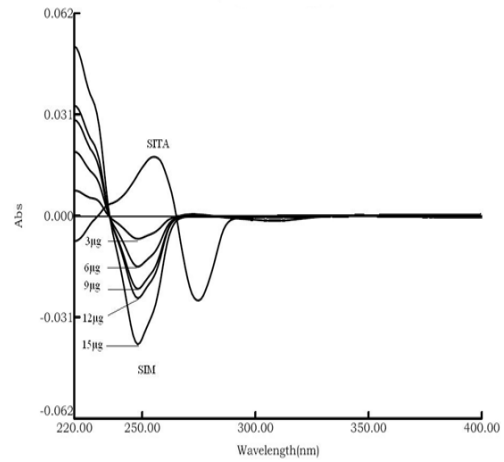
**Fig 1: First order derivative overlain spectra of SIM (SIM, 6 µg/ml) and SITA (SITA 75 µg/ml)**



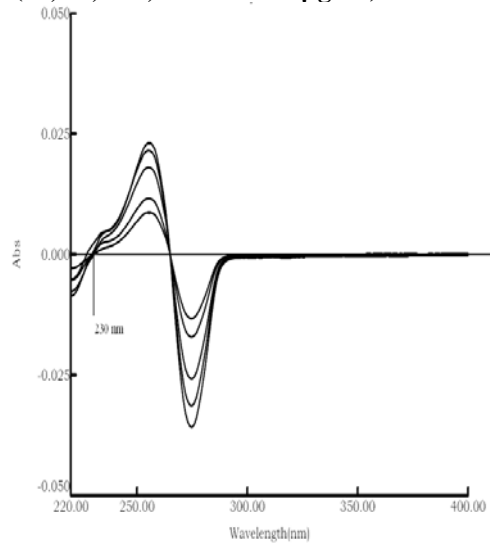
**Fig 2: First order derivative spectra for SIM (3, 6, 9, 12 and 15 µg/ml) at 275 nm**



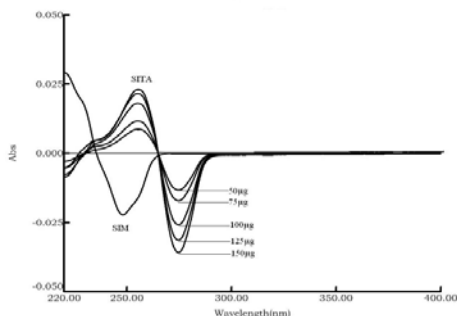
**Fig 2a: First order derivative spectra for SITA (75 µg/ml) and SIM (3, 6, 9, 12 and 15 µg/ml)**



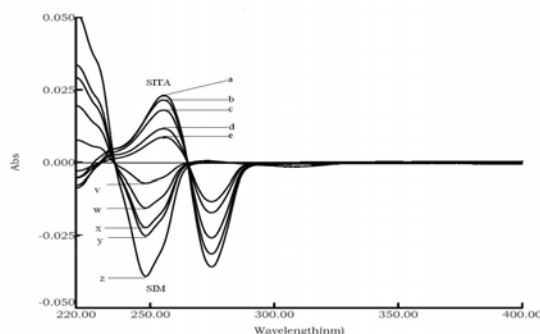
**Fig 3: First order derivative spectra for SITA (50, 75, 100, 125 and 150µg/ml) at 230 nm**



**Fig 3b:** First order derivative spectra for SIM (6 µg/ml) and SITA (50, 75, 100, 125 and 150µg/ml)



**Fig 4:** First order derivative spectra of (a) 50, (b) 75, (c) 100, (d) 125 and (e) 150 µg/ml solution of SITA and (v) 3, (w) 6, (x)9, (y) 12, and (z)15 µg/ml solution of SIM



**Table 1:** optical and regression characteristics and validation parameters of SIM and SITA

Parameters	SIM				SITA			
	Method A		Method B	Method C	Method A		Method B	Method C
	238	267			238	267		
Beers law limit (µg/ml)	3-15	3-15	3-15	3-15	3-15	3-15	3-15	3-15
Regression equation (y=mx)	y=0.048x	y=0.001x	y=0.002x	y=0.023x	y=0.004x	y=0.001x	y=-0.002x	y=0.001x
Slope (m)	0.048	0.001	0.002	0.023	0.004	0.001	-0.002	0.001
Correlation coefficient(R <sup>2</sup> )	0.997	0.996	0.994	0.998	0.996	0.999	0.996	0.996
Relative standard deviation(%RSD)	0.412	0.514	0.513	0.613	0.313	0.368	1.20	1.41
Precision								
Intraday(n=5) (%CV)	0.121	0.132	0.714	1.120	0.214	0.141	0.821	0.912
Interday(n=5) (%CV)	0.241	0.262	0.825	0.320	0.514	0.331	1.12	1.32

**Table 2.**Results of recovery studies

Recovery level (%)	Amount spiked (µg/ml)		Amount recovered (µg/ml)		% Mean	
	SIM	SITA	SIM	SITA	SIM	SITA
Method A	80	7.2	7.19	80.10	99.86	100.125
	100	9	9.09	100.05	101	100.05
	120	10.8	10.807	119.90	100.60	99.91
Method B	80	7.2	7.205	79.59	100.06	99.48
	100	9	8.98	100.50	99.77	100.50
	120	10.8	10.79	120.05	99.90	100.04
Method C	80	7.2	7.18	79.89	99.72	99.86
	100	9	8.96	99.89	99.55	99.89
	120	10.8	10.76	120.20	99.62	100.16