

Manuscript version: Author's Accepted Manuscript

The version presented in WRAP is the author's accepted manuscript and may differ from the published version or Version of Record.

Persistent WRAP URL:

<http://wrap.warwick.ac.uk/142886>

How to cite:

Please refer to published version for the most recent bibliographic citation information. If a published version is known of, the repository item page linked to above, will contain details on accessing it.

Copyright and reuse:

The Warwick Research Archive Portal (WRAP) makes this work by researchers of the University of Warwick available open access under the following conditions.

Copyright © and all moral rights to the version of the paper presented here belong to the individual author(s) and/or other copyright owners. To the extent reasonable and practicable the material made available in WRAP has been checked for eligibility before being made available.

Copies of full items can be used for personal research or study, educational, or not-for-profit purposes without prior permission or charge. Provided that the authors, title and full bibliographic details are credited, a hyperlink and/or URL is given for the original metadata page and the content is not changed in any way.

Publisher's statement:

Please refer to the repository item page, publisher's statement section, for further information.

For more information, please contact the WRAP Team at: wrap@warwick.ac.uk.

Detecting CO₂-sensitive hemichannels in neurons in acute brain slices

Emily Hill,^{1,2,3*} Nicholas Dale,¹ and Mark J. Wall^{1,**}

¹School of Life Sciences, University of Warwick, Coventry, CV4 9YH, United Kingdom

²Technical Contact

³Lead Contact

*Correspondence: E.hill.2@warwick.ac.uk

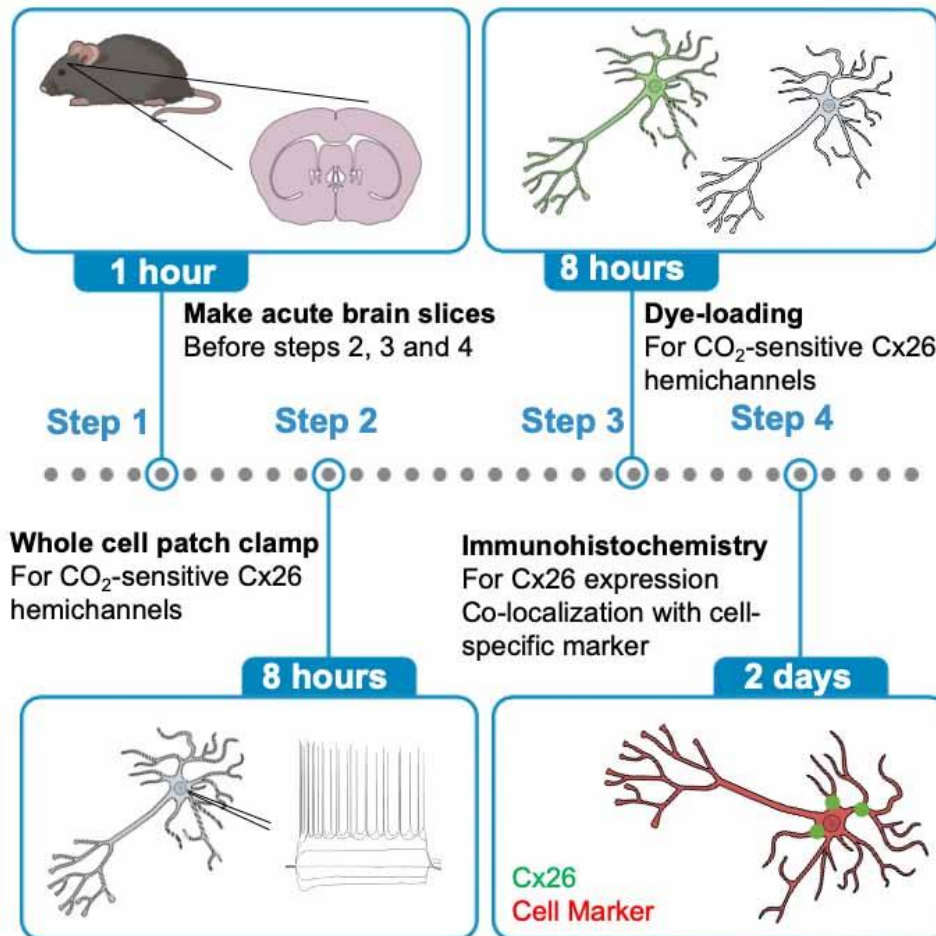
**Correspondence: Mark.wall@warwick.ac.uk

Summary

This protocol provides two independent methods to functionally detect the neuronal expression of CO₂-sensitive hemichannels. These hemichannels (consisting of connexins 26 or 30) are directly gated by CO₂, independent of pH changes and until recently were thought to be only expressed by glia. This protocol outlines a method to change the concentration of CO₂ without changing pH, using isohydric solutions and then utilize this to detect opening and closing of functional hemichannels using whole-cell patch clamp recording and dye loading.

For complete details on the use and execution of this protocol, please refer to Hill et al. (2020).

Graphic Abstract



Before you Begin

Note: We use the following abbreviations in this protocol:

Cx26	Connexin 26
SIV	Standard IV (I- current; V- voltage)
DIV	Dynamic IV (I- current; V- voltage)
CBF	Carboxyfluorescein
IHC	Immunohistochemistry

Electrophysiology set-up

Timing: [1.0 -1.5 hours]

1. The researcher will need access to a whole cell patch clamp electrophysiology recording rig to be able to record from the neurons of interest in acute brain slices. For the dye loading experiments, there is an additional requirement for fluorescent illumination which could be part of a patch clamp or calcium imaging rig. The fluorescence needs to be ~488 nm with a total magnification of at least x400 (x40 objective and x10 camera magnification) with the facility to record images
2. Acute brain slices containing the relevant brain area (recommendation of 300-350 μM thickness) first have to be prepared and can then be stored at 34 °C in 35 mm Hg CO₂ buffer (see recipes below). Slices can be stored for up to 6-8 hours post-slicing.

Note: Standard slice preparation protocols will generate brain slices that can be stored and used between 1 to 8 hours post slicing. This time will differ depending on the age of the animal and the region of interest. Always allow the slices a minimum of 1 hour for recovery after slicing before experiments.

Note: This protocol can be applied to both mouse and rat brain slices. It can be used with any region of interest and any age of animal as required by your study. We have tested dopaminergic neurons in the substantia nigra pars compacta and GABAergic neurons in the ventral tegmental area using two different ages of mice (P7-10 and P17-21) and showed CO₂ sensitivity. As a control, we also demonstrated that there was no CO₂ sensitivity in the CA1 region of the hippocampus using both dye loading and electrophysiology. See Hill et al (2020) for more details.

3. The researcher will need a 95 % O₂ and 5 % CO₂ supply, an 100 % CO₂ supply, and an 100 % O₂ supply. The researcher will need mixer valves so the gases can be mixed to produce the correct levels of CO₂ for the experiments (see below for details) and a pH meter and electrode.

CRITICAL: It is vital to correctly use the mixer valves to ensure a constant pH across the two solutions (20 and 55 mm Hg CO₂) as this protocol requires isohydric (constant pH) conditions in order to isolate pH-independent CO₂-mediated effects. Always monitor the pH of the solutions throughout the day, to ensure that the pH does not drift over time. Although the mixer valves take

more time and monitoring than pre-bought gases, they allow for much greater experimental flexibility so that bespoke mixtures can be created as required.

Note: The midpoint for connexin 26 hemichannel opening is around 35 mm Hg CO₂. Therefore, if cells are sensitive, then fluctuations above this (to 50 mm Hg CO₂) and below this (to 20 mm Hg CO₂) would be expected to alter the open probability of the channels and thus the cells would display a conductance phenotype.

Note: For the electrophysiology, we carry out two different experiments: firstly, we change from 35 to 55 mm Hg CO₂ buffer to increase the opening of the hemichannels and in separate experiments we change from 35 to 20 mm Hg CO₂ buffer to increase the closing of the hemichannels.

Isohydric solution preparation

Timing: [30 minutes]

Note: The baseline solution (buffer) is always 35 mm Hg CO₂ buffer. Depending on experiment, either 55 mm Hg or 20 mm Hg CO₂ buffer will also need to be prepared. These buffers differ in their concentrations of NaCl and NaHCO₃ (see materials and equipment for further details).

Note: Before starting, ensure that you have the mixers set up correctly (see Fig 1). There are a number of suppliers for mixers, we use PLATON Variable-area flow meters. If you would rather buy bespoke pre-made CO₂/O₂ mixtures to avoid having to mix your own, you can do this at an extra cost.

Note: For 20 mm Hg CO₂ buffer you will need 2 x 0-10 cc/MIN AIR x 100 (6831), one for the 100 % O₂ line and one for the 95% O₂/5% CO₂ line to mix the two gases in a roughly 1:1 proportion.

Note: For 55 mm Hg CO₂ buffer, you will need 1 x 0-250 cc/MIN AIR x 100 (6831) for the 95% O₂/5% CO₂ line and 1 x 0-10 cc/min AIR (6387) for the 100 % CO₂ line, to mix the gases in a roughly 0.96 to 0.04 proportion.

Note: All buffers should have an osmolarity of 300 mOsm. This can be a good step for troubleshooting.

4. Generation of isohydric solutions to vary CO₂ levels without changing the extracellular pH.
 - a. Prepare the 35 mm Hg CO₂ buffer and either the 55 mm Hg or 20 mm Hg CO₂ buffer depending on whether you want to open or close the hemichannels. Use the table in “Materials and Equipment” for the buffer recipes (solutions based on Huckstepp et al (2010))
5. Generating correct gas mixtures and correcting for pH differences
 - a. The 35 mm Hg CO₂ buffer is bubbled with standard 95% O₂ 5% CO₂. The pH for this solution does not need to be altered but should be checked each day to ensure that it is ~7.4. Test this first before beginning the mixer preparation for (b) and (c). If the solution is not ~pH 7.4, then remake to ensure no errors have been made.
 - b. The 55 mm Hg CO₂ buffer is saturated with 9% CO₂ (with the balance being O₂) with pH matched to control (35 mm Hg CO₂ buffer). This is achieved by mixing the 95% O₂ 5% CO₂ with the 100 % CO₂ using the mixer valves.

- i. Place the pH electrode into the 55 mm Hg CO₂ buffer solution. Make small adjustments to the levels of the 95% O₂ 5% CO₂ and 100 % CO₂ by turning the black dials at the bottom of the mixer. Allow 5-10 minutes for equilibration and then read the pH from the meter.
- ii. Continue this process until the pH matches that of the 35 mm Hg CO₂ buffer solution.
- iii. Periodically check throughout the day that the pH has not altered
- c. The 20 mm Hg CO₂ buffer is saturated with 2% CO₂ (with the balance being O₂), with pH matched to control (35 mm Hg CO₂ buffer). This is achieved by mixing the 95% O₂ 5% CO₂ with 100 % O₂ using one of the mixer valves.
 - i. Place the pH electrode into the 20 mm Hg buffer solution. Make small adjustments to the levels of the 95% O₂ 5% CO₂ and 100 % O₂ by turning the black dials at the bottom of the mixer. Allow 5-10 minutes for equilibration and then read the pH from the meter.
 - ii. Continue this process until the pH matches that of the 35 mm Hg CO₂ buffer solution.
 - iii. Periodically check throughout the day that the pH has not altered

Note: Setting up and calibrating the mixers will take some time on the first day of experiments, but if the mixer dials are left at the end of the experiments, then only minor adjustments will be needed for subsequent experiments.

Preparation of solutions for dye loading experiments

Timing: [10 mins]

6. Generate isohydric solutions as outlined above (35 mm Hg CO₂ and 55 mm Hg CO₂).
 - a. To 200 ml of the 35 mm Hg CO₂ buffer and 55 mm Hg CO₂ buffer add 15 mg of the dye carboxyfluorescein and mix thoroughly.
 - b. Bubble as normal in the water bath until use

Key Resources Table

REAGENT or RESOURCE	SOURCE	IDENTIFIER
Antibodies		
Mouse monoclonal anti-Connexin 26	Invitrogen	138100
Donkey anti-mouse 594	Invitrogen	A21203
Chemicals, Peptides, and Recombinant Proteins		
Carbenoxolone disodium salt	Sigma Aldrich	C4790-1G
(6)-Carboxy-fluorescein (CBF)	Novabiochem	8.51082.001
NaCl	Fisher	S/3160/65
NaHCO ₃	Alfa Aesar	A17005
NaH ₂ PO ₄	Fisher	P/4800/53
KCl	Fisher	P/4280/53
D-Glucose	Fisher	G/0500/53
MgSO ₄	Fisher	M/1050/53

CaCl ₂ (1 mM stock)	In-house	NA
Triton 100x	Fisher	T/3751/08
BSA	G-Biosciences	224B-B
Vectasheild	Vector Labs	H-1000
HEPES	Sigma	H4034
Potassium D-Gluconate	Sigma	G4500
EGTA	Sigma	E3889
Mg-ATP	Sigma	A9187
GTP	Sigma	G9002
Phosphocreatine	Sigma	P7936
Software and Algorithms		
pClamp suite (version 10)	http://www.moleculardevices.com/products/software/pclamp.html	RRID:SCR_011323
IC Capture Version 2.4.642.2631	Imaging source	NA
Zen Black	http://www.zeiss.com/microscopy/en_us/products/microscope-software/zen.html#introduction	RRID:SCR_013672
Experimental Models: Organisms/Strains		
C57/Blk6 wild-type mice 2-3 weeks old	Bred in-house Other strains can be used as required	NA
Other		
Microm microslicer	Thermoscientific	HM 650V
Gibbs slice Preincubation chamber	In-house (Warner supply a version)	64-125/65-0076
Anti-vibration table	TMC vibration control	Clean bench (cat depends on size)
Faraday cage	In-house (TMC supply a version)	TMC 81-334*
Temperature controller	Scientifica in-line Peltier heater	SM-4600*
Fixed-stage upright microscope with infrared and fluorescence filters	Scientifica	Olympus BX151W or SliceScope*
Fluorescence microscopy illumination system	CoolLED	PE-4000-L-SYS*
CCD camera	Hitachi	KP-F1AP*
Motorized Manipulators	Scientifica	PatchStar or MicroStar*
Patch clamp amplifier	Molecular Devices, USA	Axon Multiclamp 700B*
Low-noise digitizer	Molecular Devices, USA	Digidata 1440A*
Perfusion pump	Watson Marlow	120S/DV*
Water baths x2	Clifton	FL28D*
100 % O ₂ Line	BOC Medical oxygen	PL0735/5000*
100 % CO ₂ Line	In-house	NA
95 % O ₂ / 5% CO ₂ line	In-house	NA

Microelectrode puller	Sutter	P97
Patch pipettes (5–10 MΩ resistance)	Manufactured from thick walled glass (Multichannel systems)	300057
PLATON Variable-area flow meters	2 x 0-10 cc/MIN AIR x 100 and 1x 1 x 0 -10 cc/min AIR Originally purchased from Roxspur	6831 6837

*There are many good options for electrophysiology rig components. Here we have listed the components of our rig, but this can be altered to any standardized patch clamp rig.

Materials and Equipment

Solution recipes for isohydric buffers

	35 mm Hg CO ₂ buffer (control)		55 mm Hg CO ₂ buffer (hypercapnic)		20 mM Hg CO ₂ buffer (hypocapnic)	
Reagent	Final Conc (mM)	Amount (g)	Final Conc (mM)	Amount (g)	Final Conc (mM)	Amount (g)
NaCl	124	7.2466	100	5.8440	140	8.1816
NaHCO ₃	26	2.1843	50	4.2001	10	0.8401
NaH ₂ PO ₄	1.25	0.1950	1.25	0.1950	1.25	0.1950
KCl	3	0.2237	3	0.2237	3	0.2237
Glucose	10	1.8016	10	1.8016	10	1.8016
MgSO ₄	1	0.2465	1	0.2465	1	0.2465
CaCl ₂ (1 mM stock)	2	2 ml	2	2 ml	2	2 ml
dH ₂ O	n/a	To 500 ml	n/a	To 500 ml	n/a	To 500 ml
Bubbled with:	95% O ₂ 5% CO ₂ with a final pH of ~7.4.		9% CO ₂ (with the balance being O ₂) with pH maintained to match control (35 mm Hg).		2% CO ₂ (with the balance being O ₂), with pH maintained to match control (35 mm Hg).	

Note: A 10x stock can be made including NaCl, NaHCO₃, NaH₂PO₄ and KCl and stored at 4 °C until the day of use. Glucose and CaCl₂ must be added on the morning of each experiment.

Note: The buffers were originally confirmed to be either 35, 20 or 55 mm Hg CO₂ using a blood gas analyzer. Each of the solutions was tested in triplicate. They have since been used routinely in the lab. If you wanted to use a new level of CO₂, then you would need to alter the buffer recipe accordingly and measure the level of CO₂ (mm Hg) with an appropriate method (such as gas analyzer or CO₂ electrode). We found that the composition of the buffer required to give the desired pCO₂ cannot be predicted using the Henderson Hasselbalch equation, which we think is due to the presence of other ions in the buffers.

CRITICAL: When making the solutions, add all reagents except CaCl₂ and 50 ml of dH₂O. Bubble this solution for 10 minutes with 95% O₂ /5% CO₂, then add CaCl₂ and top up with the remaining dH₂O to avoid any precipitation.

Step-by-Step Method Details

Electrophysiological detection of hemichannels in neurons in acute brain slices

Timing: [5-6 hours]

This protocol provides a method for testing using electrophysiology whether changes in CO₂ levels can modulate neuronal excitability.

1. Making recordings from identified neurons in acute brain slices
 - a. Perfuse the recording bath (2-3 ml/min⁻¹) with the 35 mm Hg CO₂ buffer (bubbled with 95% O₂ and 5% CO₂) and allow to reach recording temperature (~30 °C).
 - b. Place brain slice in the bath (hold in place using a slice hold down for example, Multichannel systems #64-1418) and allow to equilibrate for 10-15 minutes
 - c. Make patch clamp recording in current clamp mode from neuron(s) of interest. See Figure 2 for details of the process or refer to the axon guide (Molecular Devices, 2020) for a more thorough overview of the patch clamp technique.

Note: Any standard patch clamp electrophysiology rig can be used for this protocol. There are many possible options for rig set up, but for clarity our slices were visualized using IR-DIC optics with an Olympus BX151W microscope (Scientifica, Bedford UK) and a CCD camera (Hitachi). Voltage recordings were made using an Axon Multiclamp 700B amplifier (Molecular Devices, USA) and digitized at 20 KHz (Digidata 1440A; Molecular devices, USA). Data acquisition and analysis were performed using pClamp 10 (Molecular Devices, USA).

Note: Patch pipettes (5–10 MΩ) were manufactured from thick walled glass (Multichannel systems).

Note: Use any standard intracellular patch solution for making recordings. We use and would recommend the following composition: 135 mM potassium gluconate, 7 mM NaCl, 10 mM HEPES, 0.5 mM EGTA, 10 mM phosphocreatine, 2 mM MgATP, and 0.3 mM NaGTP (293 mOsm, pH 7.2).

Note: Always ensure intracellular solution is filtered directly before use.

- i. Carry out the standard IV protocol (Fig 3B) to check the health of the neuron, seal stability and identity (resting membrane potential, firing pattern) and allow cell to equilibrate for 5 minutes. Can also inject naturalistic current to measure firing rate (Fig 3C).

CRITICAL: Monitor the bridge balance/ series resistance across recordings to ensure stability. Any recordings where this diverges by more than 20 % over the period of recording should be disregarded.

- ii. Begin running current steps (50 pA hyperpolarizing step, 1s interval; Fig 3A) so you can monitor the input resistance of recorded neuron.
 - iii. Generate a baseline of current steps over 10-15 minutes.
 2. Changing the level of CO₂ to open or close hemichannels
 - a. Change perfusion of the slice from 35 mm Hg CO₂ buffer to either 55 mm Hg CO₂ buffer (to open hemichannels) or to 20 mm Hg CO₂ buffer (to close hemichannels)
 - i. Continue running current steps for at least 10-15 minutes
 - ii. Once stable, carry out standard IV and inject naturalistic current injections to measure firing rate.
 - b. Optional: Change perfusion of slice back to 35 mm Hg CO₂ buffer to attempt reversal of the effect. Note that this can be quite challenging.
 - i. Run current steps for a further 10-15 minutes

Note: Ensure that you save all SIV, firing rate traces and sweep files of the current steps for analysis. A measure of the size of the voltage response can be taken from each step. Steps can be averaged easily in time-bins if required in Clampfit. SIV measurements can be used to measure resting membrane potential and input resistance and the voltage response to the naturalistic current injection can give a measure of the cells firing.

Note: In our study we chose to record in current clamp (recording the cell's membrane potential) as this allowed us to run the SIV protocol to validate cell type at the start of recording and also inject naturalistic current to look at firing. This protocol could also be used to record the current directly (in voltage clamp), although additional stimulation protocols will need to be used.

Dye loading of neurons through hemichannel opening

Timing: [5-6 hours]

This protocol outlines the fluorescent imaging of neurons that express CO₂ sensitive hemichannels by trapping a cell impermeant dye (which can move through open hemichannels). The protocol is simplified in figure 4.

3. Preparing a slice for the dye loading of neurons
 - a. Perfuse recording bath with the 35 mm Hg CO₂ (control) buffer (bubbled with 95% O₂ and 5% CO₂) and allow to reach recording temperature.
 - b. Place brain slice in the bath and allow to equilibrate for at least 15 minutes. Researcher could make initial recordings from neurons or use landmarks to ensure that they are imaging the correct region of the slice.

Note: If performing dye-loading experiments following electrophysiology, you could potentially include in your pipette solution a different membrane impermeable dye so that you could identify with dye loading the neurons you recorded from and found to be sensitive to CO₂ changes.

4. Opening hemichannels
 - a. The control buffer is exchanged for 55 mmHg CO₂ aCSF buffer (hypercapnic) containing 5(6)-carboxy-fluorescein (CBF, 100 μM) for 20 minutes to allow the CO₂ sensitive-hemichannels to open.
5. Closing hemichannels and trapping dye
 - a. Solution is exchanged for 35 mmHg CO₂ buffer containing CBF (100 μM) for 5 minutes to allow the hemichannels to close, trapping the dye inside.
 - b. Solution is exchanged to 35 mmHg CO₂ aCSF without the dye for at least for 3 hours to reduce the background staining before imaging.
6. Imaging of filled cells
 - a. Images are taken using a CCD camera with 488 nm fluorescence (CoolLED). As CBF rapidly bleaches, images need to be quickly acquired from regions of interest. CBF cannot be fixed using PFA (as it lacks the required groups for cross-linking).

CRITICAL: Do all the dye loading without the microscope light on to avoid bleaching. Prolonged washing of the dye is required for brain slices compared to use of cultured cells or cell lines due to the thickness of the tissue. The dye rapidly bleaches so it is important to take the images rapidly.

Note: A suitable control is to not change the buffer from 35 mm Hg CO₂ and show neurons do not dye load. It is also possible to block dye loading with carbenoxolone (100 μM; an indiscriminate hemichannel blocker) to further show that the effects are hemichannel mediated.

Note: We use CBF as we know it passes through connexin 26 hemichannels. It is not fixable with PFA as it lacks the required groups for cross-linking. There may be other dyes that can pass through the hemichannels and can be fixed. A trial and error approach would have to be used to discover such dyes.

Immunohistochemistry to confirm connexin expression profile

This protocol outlines how to confirm the connexin expression profile of your region of interest, as further evidence of the observed effects being mediated by CO₂-sensitive hemichannels (in this case Cx26).

Note: For the best results with immunohistochemistry, mice/ rats should be cardiac perfused 4 % PFA and then post-fixed overnight at 4 °C (18 - 24 hours).

7. The slices are then washed 5 times in PBS
8. They are then blocked for an hour (1% BSA, 0.4% Triton 100X in PBS, 400 μl per slice)
9. The slices are washed 5 times in PBS
10. The primary antibodies: a marker for your cell of interest (at required concentration; Green 488) and an antibody against connexin 26 (1:200, Mouse; Red 594) are added to the slices (400 μl per slice) for an hour at room temperature (20-22 °C) on a shaker and then kept at 4-8 °C overnight (12-16 hours) static in the fridge.
11. Slices are washed 5 times for 5 minutes with PBS

12. The corresponding secondary antibodies are then added (400 μ l per slice) for 4 hours at room temperature (20-22 $^{\circ}$ C).

Note: Cover the plate in foil after addition of the secondary antibodies to avoid contact with light. Maintain all further steps in as little light as possible.

13. The slices are washed 5 times with PBS
14. Slices are mounted on glass slides with Vectashield (Vector laboratories, Peterborough UK) and stored in foil at 4 $^{\circ}$ C until imaging.

Note: The earlier the imaging can be done following mounting the better. All our imaging was completed within 2 weeks of the initial immunohistochemistry to ensure the best staining.

Note: Any standardized protocol for imaging can be used. The immunohistochemistry protocol will need to be optimized for the antibodies that you are using and the cells of interest. We image with a Leica 880 confocal microscope and perform image acquisition and processing in the Zen black software suite.

Expected Outcomes

This protocol describes a way in which you can look for a CO₂-sensitivity phenotype amongst a specific group of neurons of interest across different areas of the brain. Electrophysiology provides the first evidence of a neuronal response to changing the level of CO₂ and as the solutions are kept at a constant pH (isohydric), the changes are completely independent of pH. Connexin 26 and 30 are known to be directly CO₂ sensitive and open in response to raised levels of CO₂ (Huckstepp et al, 2010; Meigh et al, 2013). If they are expressed and form functional hemichannels in the cells of interest, then an increase of the CO₂ level would be expected to increase the opening probability of hemichannels and thus cause an increase in conductance (decrease in input resistance), which can be measured by whole cell patch clamp. The firing rate of the neuron is also a good measure of change, as a drop in input resistance should lead to a decrease in excitability.

Figure 6 outlines what the researcher would observe in two cases: firstly, where CO₂ sensitive hemichannels are present (Fig 6; top) and secondly where CO₂ sensitive hemichannels are not present (Fig 6; bottom). In the case of presence, there is a steady reduction in the size of the response to a 50 pA (100 ms) hyperpolarizing current step over time. The full time course can be seen on the left and examples before and after raised CO₂ of the voltage response to the step and SIV injection in the middle. This tells you that the neurons are responding to CO₂. In the case of no CO₂ sensitive hemichannels present, there is no significant change to conductance or excitability over time.

Note: Always perform the relevant controls, suggestions of appropriate controls are detailed next. First, repeat the experiments but with no change in the level of CO₂ (just by switching solutions) to ensure it is not an artifact of this. Secondly, repeat the experiments with carbenoxolone (100 μ M; an indiscriminate hemichannel blocker), if the effect is real and through hemichannels then it will be abolished in this case. Finally, as a control try a different unrelated region of the brain (that has not previously been shown to be CO₂-insensitive). In our study we used the CA1 region of the hippocampus and showed no electrophysiological phenotype or dye loading.

Dye loading experiments can then take you a step further to confirming that the changes are mediated by connexin 26. Here, you will use (6)-Carboxy-fluorescein (CBF), as it is known to dye-load through connexin 26 in raised CO₂. If the cells in your field of view have functional hemichannels then they will load with CBF (Fig 6; top right). If they do not, then no dye loading will be observed (Fig 6; bottom left).

Finally, immunohistochemistry can be performed to look for co-localisation between the expression of CO₂ sensitive connexins (26 and 30) with your neuron / cell of interest by looking for co-localisation.

Quantification and Statistical Analysis

All data processing and analysis can be performed in Clampfit which is available with the pClamp suite of software. All imaging was carried with confocal microscopy (Leica 710 and Zen Black for image acquisition and processing). Appropriate statistical tests were chosen based on sample size, whether there were repeated measures and whether the populations were paired or unpaired (Wilcoxon rank sum and Mann Whitney tests respectively). For tests of more than two variables, Kruskal-Wallis ANOVAs were run with Dunn's post hoc multiple comparisons. All tests were run to find significance at the level $p < 0.05$ and were performed on raw (non-normalized) data.

Limitations

This protocol provides a way to test for the presence of functional (pH independent) CO₂-sensitive hemichannels in different cell populations. The combination of electrophysiology with dye loading and immunohistochemistry can provide you with a strong foundation of understanding of expression and functional consequence of CO₂-sensitivity within your cells. There are three main limitations to the study, the first is that it does not provide a behavioral correlate to the sensitivity, as this was outside of the scope of this preliminary study. The second being the use of immunohistochemistry to study the co-localisation of connexin 26 with the marker for your cell of interest. This is a qualitative rather than quantitative method and perhaps a method like FISH could also be used in order to give a more accurate measure of expression. The third limitation comes from the use of electrophysiology as a means of measurement. When recording for prolonged periods (>30 minutes), cells can sometimes be susceptible to run down. To address this, we performed our recordings within a relatively short time period of time. The changes in CO₂ level that we use are subtle (physiological) and should not therefore cause any cell swelling or lasting distress. However, it can be difficult to routinely get full recovery (Hill et al, 2020). To ensure this partial recovery was not an effect of the initial CO₂ change, our experiments have been performed in both directions – from 35 mm Hg CO₂ to 55 mm Hg CO₂, and a small number starting in 55 mm Hg CO₂ and changing back to 35 mm Hg CO₂. If raising the CO₂ was opening for example a KATP channel or resulting in cell swelling and this was responsible for the change in input resistance, then the reverse experiments would not have worked.

Note: Before starting our study, there was already a publication (Vandecasteele et al, 2006) highlighting the expression of connexin 26 in our region of interest using single cell PCR. If this data is not available for your region of your interest then you could consider running single cell PCR, western

blot or preliminary IHC to check for connexin expression profiles before undertaking the study to avoid wasting time.

Troubleshooting

Problem:

Over the period of recording, the flow of gases may change and hence lead to small changes in pH. It is vital that the experiments are isohydric so that any observed changes can be attributed to the shift in CO₂ concentration. If expected responses are not observed, the first thing to check is the pH of the solutions.

Potential Solution:

Two strategies are available for this problem, the first is to regularly monitor the pH of the solutions throughout the day to ensure they remain the same. It is also possible to purchase pre-mixed gases for these experiments, although this is a more expensive option and limits the flexibility that you have in testing various different concentrations that is granted by mixing your own gases.

Resource Availability

Lead Contact

Further information and requests for resources and reagents should be directed to and will be fulfilled by the Lead Contact, Emily Hill, E.Hill.2@warwick.ac.uk

Materials Availability

No new mouse lines or reagents were generated for this study

Data and Code Availability

This study did not generate new code or structural datasets

Acknowledgments

This work was supported by a Biotechnology and Biological Sciences Research Council-funded doctoral fellowship (E.H.)

Author Contributions

Conceptualization and methodology, E.H., N.D., and M.J.W; Investigation and formal analysis, E.H.; Writing – Original draft, E.H.; Writing – Review and Editing, E.H., N.D., and M.J.W.

Declaration of Interests

The authors declare that there are no conflicts of interest.

References

Badel L., Lefort S., Brette., Petersen C.C.H., Gerstner W., Richardson M.J.E. (2008). Dynamic I-V Curves Are Reliable Predictors of Naturalistic Pyramidal-Neuron Voltage Traces. *Journal of Neurophysiology*, 99, 656-666.

Harrison PM, Badel L, Wall MJ and Richardson MJE (2015) Experimentally verified parameter sets for modelling heterogeneous neocortical pyramidal-cell populations *PLOS Computational Biology* 11: e1004165

Hill, E., Karikari, T., Moffat, K., Richardson, M. and Wall, M. (2019). Introduction of Tau Oligomers into Cortical Neurons Alters Action Potential Dynamics and Disrupts Synaptic Transmission and Plasticity. *eNeuro*, 6(5), pp. eNEURO.0166-19.2019.

Hill, E., Dale, N. and Wall, M., (2020). Moderate Changes in CO₂ Modulate the Firing of Neurons in the VTA and Substantia Nigra. *iScience*, 23(7), p.101343.

Huckstepp RT, Eason R, Sachdev A, Dale N. (2010). CO₂-dependent opening of connexin 26 and related beta connexins. *J Physiol* 588:3921-31.

Meigh L, Greenhalgh SA, Rodgers TL, Cann MJ, Roper DI, Dale N. (2013) CO₂ directly modulates connexin 26 by formation of carbamate bridges between subunits. *Elife* 2:e01213.

Molecular Devices. 2020. *THE AXON GUIDE*. [online] Available at: <https://www.moleculardevices.com/en/assets/ebook/dd/cns/axon-guide-to-electrophysiology-and-biophysics-laboratory-techniques#gref> [Accessed 26 August 2020].

Vandecasteele, M., Glowinski, J., and Venance, L. (2006). Connexin mRNA expression in single dopaminergic neurons of substantia nigra pars compacta. *Neurosci. Res.* 56, 419–426.

Figure Legends

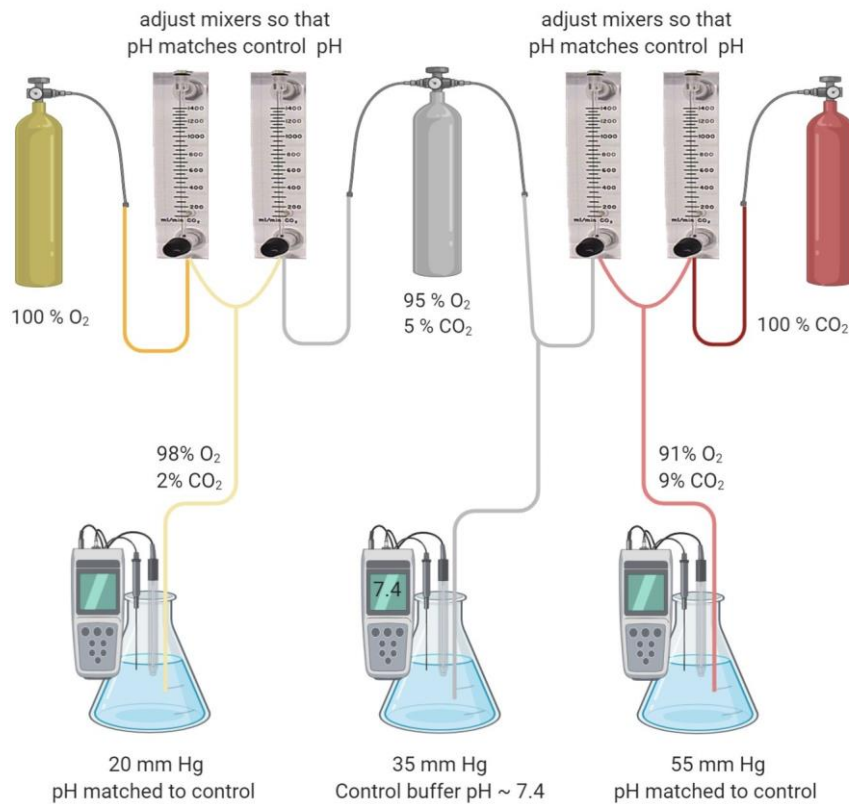


Figure 1. Mixer set up to enable smooth isohydric CO₂ level change. The 35 mm Hg CO₂ buffer is bubbled with 95% O₂/ 5% CO₂. The pH of this buffer should not need to be altered and should be ~7.4. The 55 mm Hg CO₂ buffer is saturated with 9% CO₂ (with the balance being O₂) with pH maintained to match control (35 mm Hg CO₂). This is achieved by mixing the 95% O₂ 5% CO₂ line with a 100 % CO₂ line (adjustments are made using the mixer dials). The 20 mm Hg CO₂ buffer is saturated with 2% CO₂ (with the balance being O₂), with pH maintained to match control (35 mm Hg CO₂). This is achieved by mixing the 95% O₂ 5% CO₂ line with a 100 % O₂ line (adjustments are made using the mixer dials). Created with BioRender.com

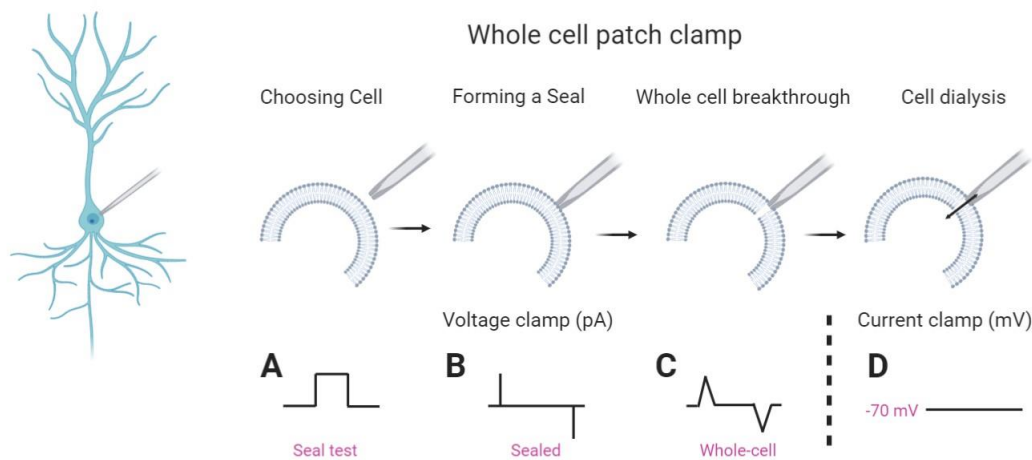


Figure 2. Simplified schematic of the whole cell patch clamp protocol. Firstly, identify the neuron of interest using the brightfield image. Then using a glass pipette (5–7 M Ω resistance) approach the cell with positive pressure on the pipette. We monitor and control the pressure with our mouths, but it is also possible to use a syringe to apply pressure (but there is less control). Upon making contact with the target cell you should see a dimple form on the cell at the end of the pipette (as a result of the positive pressure). To monitor the resistance of the pipette and sealing, a square step voltage of 5–10 mV (at 1 Hz, as shown in A) is applied. The amplitude of the current response gives a measure of the resistance (B). Once the dimple is observed, release the pressure and this will allow a high resistance seal to form between the end of the pipette and the cell membrane (some negative pressure may also need to be applied). Since $I = V/R$ (Ohms law) as the resistance of the pipette goes up (as the pipette seals to the membrane), the current response will get smaller until the trace appears flat with only the pipette capacitance transients remaining (B). The seal resistance needs to be at least 1 G Ω but hopefully higher for a good recording (if the seal is poor then a new recording has to be made from a new cell). The pipette transients can be zeroed off at this point. Increasing negative pressure is slowly applied to the pipette in order to rupture the cell membrane under the pipette and this allows breakthrough into whole-cell. At this point the capacitance transients for the cell are detected (C). At this stage we would then move from voltage clamp into current clamp mode (the resting potential for a good recording will be \sim -60 to -70 mV depending on cell type) (D). The contents of the patch pipette will start to dialyse into the cell and it is good to wait for 5–10 minutes for equilibration before starting recording. See figure 3 for suggested recording protocols. Created in part with BioRender.com

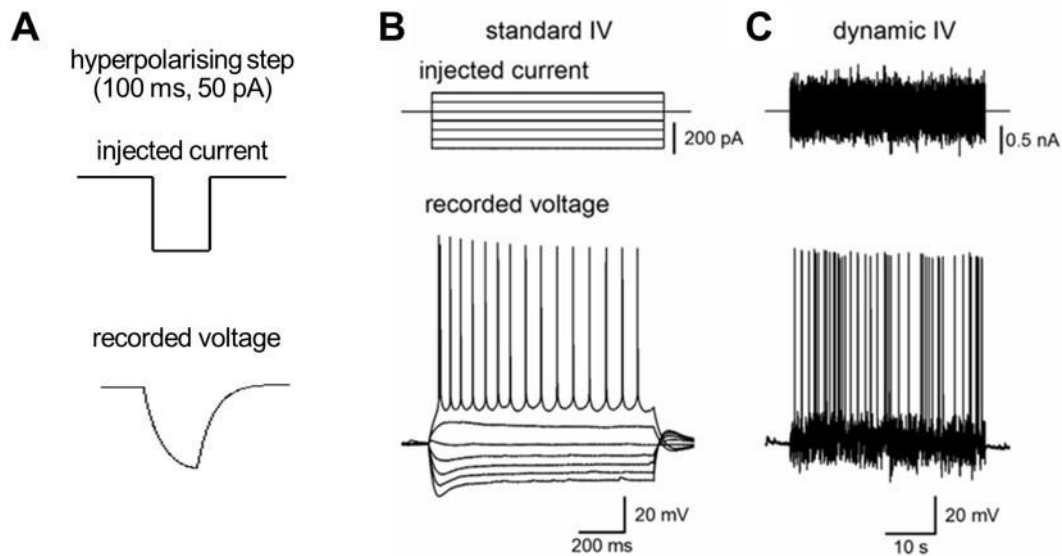


Figure 3. Suggested stimulation protocols. In our experiments we run three different current input protocols in order to fully assess the effects of the CO₂ sensitivity on neural function. (A) The first is a repeated hyperpolarizing step of -50 pA, for 100 ms, delivered every second. This is given continuously and can therefore provide a measure of the voltage response and input resistance over time. (B) The second is a standard stepwise current voltage (IV) protocol, often referred to as a SIV protocol. The current steps to use and the voltage response will depend on the cell type that you are recording from. Here is an example from a CA1 hippocampal pyramidal neuron, where current steps from -300 pA increasing by 50 pA have been introduced. The protocol should be run until a regular firing pattern is induced. This can be used to assess cell identity and health and to measure resting membrane potential and input resistance (from the current steps around the membrane potential). (C) The third current injection protocol (as used to produce a dynamic IV) injects a naturalistic current into the cell (top panel) and the voltage recorded (bottom panel) can be used to extract to determine the firing rate under a naturalistic state (for more detail, see Badel et al, 2008, Harrison et al, 2015; used in the DIV protocol). Figure reproduced in part using content previously published in Hill et al. (2019); eNeuro on a CC-BY 4.0 license.

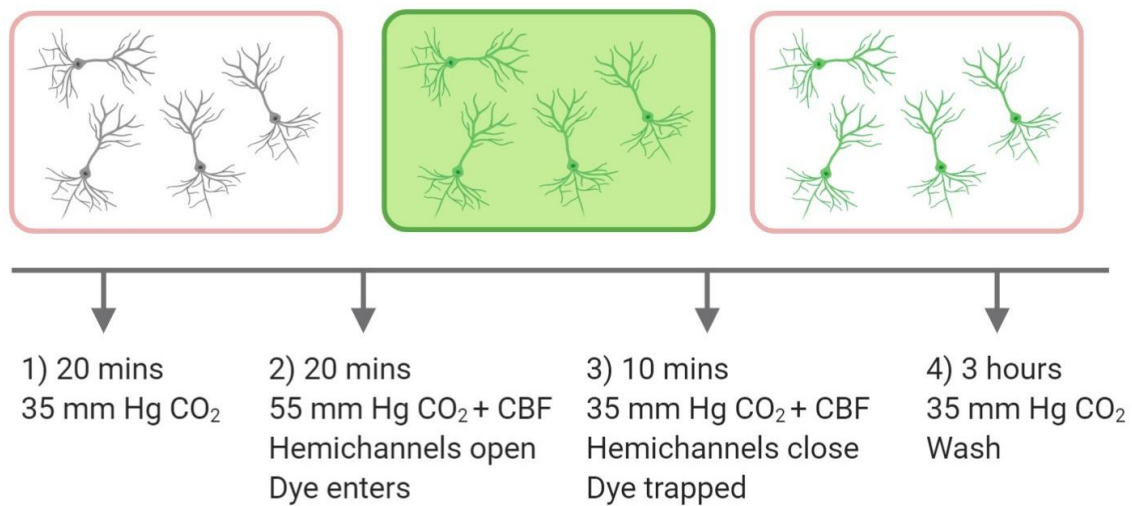


Figure 4. Simplified schematic of the dye loading protocol. A slice is transferred to the recording chamber, submerged, and perfused with control aCSF (35 mmHg CO₂) at 30 °C. Whole-cell patch clamp recordings can be used to confirm the identity of the target region of cells. Slices were then allowed to equilibrate for 20 minutes. The control aCSF was then exchanged for 55 mm Hg CO₂ aCSF (hypercapnic) containing 5(6)-carboxy-fluorescein (CBF, 100 μM) for 20 mins to allow the CO₂ sensitive-hemichannels to open. The solution was then exchanged for 35 mmHg CO₂ aCSF containing CBF (100 μM) for 5 minutes to allow the hemichannels to close. Finally, the slice was washed with 35 mmHg CO₂ aCSF for 3 hours to reduce the background staining before imaging. The dye loading method is based on that described in Huckstepp et al (2010). Created with BioRender.com

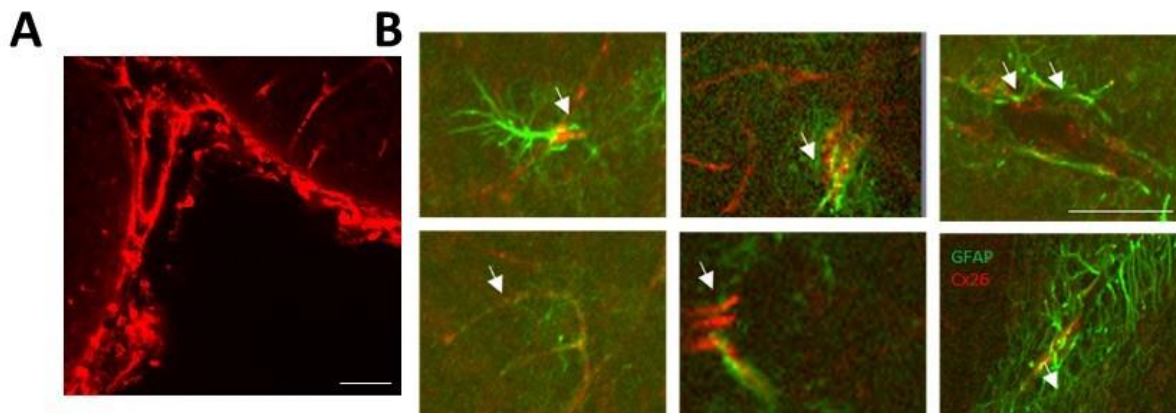


Figure 5. Representative examples of co-localisation imaging for Connexin 26 with a cell group of interest. **A.** A positive control for successful connexin 26 staining (leptomeninges). **B.** Co-localisation staining of connexin 26 (red; 594) with glial cells (GFAP; green; 488). Images were acquired on a Leica 880 confocal and processed using Zen Black software following the above immunohistochemistry

protocol detailed above. Scale bars = 50 μ M. Figure reproduced in part using content previously published in Hill et al. (2020); iScience on a CC-BY 4.0 license.

CO₂-sensitive hemichannels (increase CO₂): increase in conductance, decrease in excitability, successful dye loading

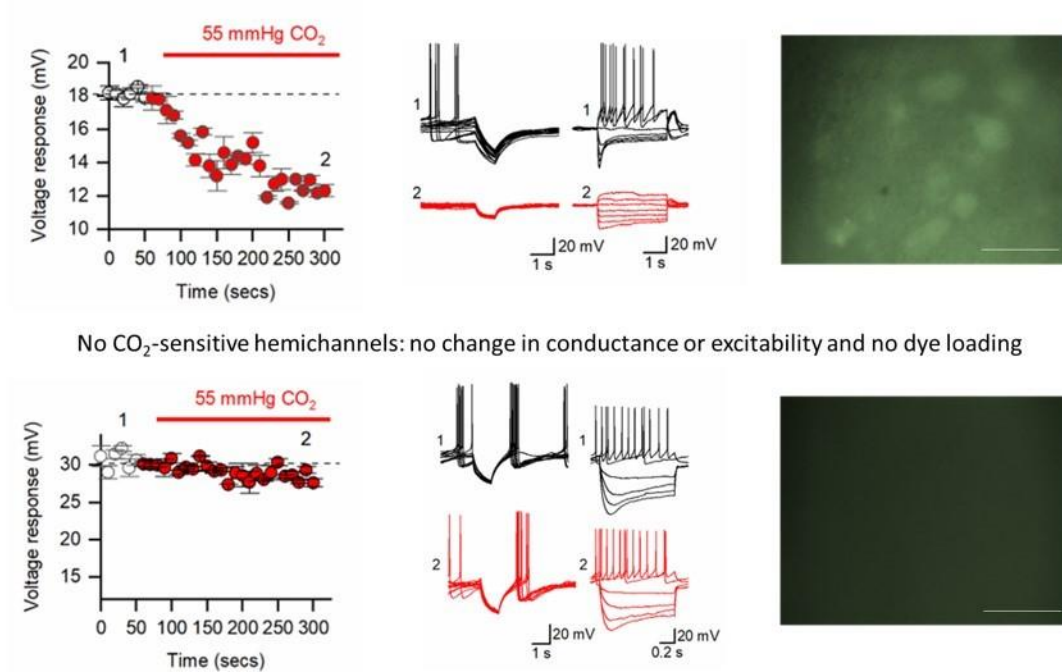


Figure 6. Expected outcomes for electrophysiology and dye loading experiments. The top row represents results from a group of neurons that do express Cx26 as functional hemichannels. (Left) Voltage time-course when switching from 35 mm Hg CO₂ to 55 mm Hg CO₂ buffer. A reduction in amplitude can be observed which is characteristic of a decrease in input resistance (increase in conductance, suggesting the opening of a membrane channel). (Middle) Step and SIV responses in 35 (Black) and 55 (Red) mm Hg CO₂ from a representative cell, displaying the decrease in input resistance and excitability upon hemichannel opening. (Right) Successful dye loading will appear as green filled neurons. The bottom row represents results from a group of neurons that do not express Cx26 as functional hemichannels. Here, there is no change to conductance or excitability and no successful dye loading. Confirming that there is no presence of functional CO₂-sensitive hemichannels in these neurons. Reproduced in part using content previously published in Hill et al. (2020); iScience on a CC-BY 4.0 license. Scale bars = 50 μ M. Data is represented as mean \pm SEM.