



THE UNIVERSITY *of* EDINBURGH

Edinburgh Research Explorer

Inner ear sensory system changes as extinct crocodylomorphs transitioned from land to water

Citation for published version:

Schwab, J, Young, M, Neenan, JM, Walsh, S, Witmer, LM, Herrera, Y, Allain, R, Brochu, CA, Choiniere, JN, Clark, JM, Dollman, KN, Etches, S, Fritsch, G, Gignac, PM, Ruebenstahl, A, Sachs, S, Turner, AH, Vignaud, P, Wilberg, EW, Xu, X, Zanno, LE & Brusatte, S 2020, 'Inner ear sensory system changes as extinct crocodylomorphs transitioned from land to water', *Proceedings of the National Academy of Sciences (PNAS)*. <https://doi.org/10.1073/pnas.2002146117>

Digital Object Identifier (DOI):

[10.1073/pnas.2002146117](https://doi.org/10.1073/pnas.2002146117)

Link:

[Link to publication record in Edinburgh Research Explorer](#)

Document Version:

Publisher's PDF, also known as Version of record

Published In:

Proceedings of the National Academy of Sciences (PNAS)

Publisher Rights Statement:

© 2020 Published under the PNAS license.

General rights

Copyright for the publications made accessible via the Edinburgh Research Explorer is retained by the author(s) and / or other copyright owners and it is a condition of accessing these publications that users recognise and abide by the legal requirements associated with these rights.

Take down policy

The University of Edinburgh has made every reasonable effort to ensure that Edinburgh Research Explorer content complies with UK legislation. If you believe that the public display of this file breaches copyright please contact openaccess@ed.ac.uk providing details, and we will remove access to the work immediately and investigate your claim.





Inner ear sensory system changes as extinct crocodylomorphs transitioned from land to water

Julia A. Schwab^{a,1}, Mark T. Young^a, James M. Neenan^b, Stig A. Walsh^{a,c}, Lawrence M. Witmer^d, Yanina Herrera^e, Ronan Allain^f, Christopher A. Brochu^g, Jonah N. Choiniere^h, James M. Clarkⁱ, Kathleen N. Dollman^{h,j}, Steve Etches^k, Guido Fritsch^l, Paul M. Gignac^m, Alexander Ruebenstahlⁿ, Sven Sachs^o, Alan H. Turner^p, Patrick Vignaud^q, Eric W. Wilberg^r, Xing Xu^r, Lindsay E. Zanno^{s,t}, and Stephen L. Brusatte^{a,c}

^aSchool of GeoSciences, Grant Institute, University of Edinburgh, EH9 3FE Edinburgh, United Kingdom; ^bOxford University Museum of Natural History, OX1 3PW Oxford, United Kingdom; ^cDepartment of Natural Sciences, National Museum of Scotland, EH1 1JF Edinburgh, United Kingdom; ^dDepartment of Biomedical Sciences, Heritage College of Osteopathic Medicine, Ohio University, Athens, OH 45701; ^eConsejo Nacional de Investigaciones Científicas y Técnicas, División Paleontología Vertebrados, Museo de La Plata, Facultad de Ciencias Naturales y Museo, National University of La Plata, B1900 La Plata, Buenos Aires, Argentina; ^fCentre de Recherche sur la Paléobiodiversité et les Paléoenvironnements, Muséum National d'Histoire Naturelle, 75005 Paris, France; ^gDepartment of Earth and Environmental Sciences, University of Iowa, Iowa City, IA 52242; ^hEvolutionary Studies Institute, University of the Witwatersrand, 2000 Johannesburg, South Africa; ⁱDepartment of Biological Sciences, George Washington University, Washington, DC 20052; ^jSchool of Geosciences, University of the Witwatersrand, 2000 Johannesburg, South Africa; ^kMuseum of Jurassic Marine Life, BH20 5PE Kimmeridge, United Kingdom; ^lDepartment of Reproduction Management, Leibniz Institute for Zoo and Wildlife Research, 10315 Berlin, Germany; ^mDepartment of Anatomy and Cell Biology, Oklahoma State University Center for Health Sciences, Tulsa, OK 74107; ⁿDepartment of Geology and Geophysics, Yale University, New Haven, CT 06511; ^oAbteilung Geowissenschaften, Naturkunde-Museum Bielefeld, Abteilung Geowissenschaften, 33602 Bielefeld, Germany; ^pDepartment of Anatomical Sciences, Stony Brook University, Stony Brook, NY 11794; ^qLaboratoire de Paléontologie, Evolution, Paléocécosystèmes et Paléoprimatologie, CNRS UMR 7262, Department of Geosciences, University of Poitiers, 86073 Poitiers Cedex 9, France; ^rKey Laboratory of Vertebrate Evolution and Human Origins, Institute of Vertebrate Paleontology and Paleoanthropology, Center for Excellence in Life and Palaeoenvironment, Chinese Academy of Sciences, 100044 Beijing, China; ^sPaleontology, North Carolina Museum of Natural Sciences, Raleigh, NC 27601; and ^tDepartment of Biological Sciences, North Carolina State University, Raleigh, NC 27695

Edited by Neil H. Shubin, University of Chicago, Chicago, IL, and approved March 10, 2020 (received for review February 4, 2020)

Major evolutionary transitions, in which animals develop new body plans and adapt to dramatically new habitats and lifestyles, have punctuated the history of life. The origin of cetaceans from land-living mammals is among the most famous of these events. Much earlier, during the Mesozoic Era, many reptile groups also moved from land to water, but these transitions are more poorly understood. We use computed tomography to study changes in the inner ear vestibular system, involved in sensing balance and equilibrium, as one of these groups, extinct crocodile relatives called thalattosuchians, transitioned from terrestrial ancestors into pelagic (open ocean) swimmers. We find that the morphology of the vestibular system corresponds to habitat, with pelagic thalattosuchians exhibiting a more compact labyrinth with wider semi-circular canal diameters and an enlarged vestibule, reminiscent of modified and miniaturized labyrinths of other marine reptiles and cetaceans. Pelagic thalattosuchians with modified inner ears were the culmination of an evolutionary trend with a long semiaquatic phase, and their pelagic vestibular systems appeared after the first changes to the postcranial skeleton that enhanced their ability to swim. This is strikingly different from cetaceans, which miniaturized their labyrinths soon after entering the water, without a prolonged semiaquatic stage. Thus, thalattosuchians and cetaceans became secondarily aquatic in different ways and at different paces, showing that there are different routes for the same type of transition.

bony labyrinth | vestibular system | morphology | thalattosuchia | CT scanning

Throughout the history of life, there have been occasional major evolutionary transitions, in which animals developed a restyled body capable of new behaviors and adapted to new habitats. A classic example is cetaceans (whales and dolphins), which evolved from land-living mammalian ancestors into pelagic (open-ocean, sea, or shelf environment) swimmers (1). In making this shift, cetaceans followed several groups of reptiles that became secondarily aquatic much earlier, during the Mesozoic Era (2). These marine reptiles—which include plesiosauroids, pliosaurids, ichthyosaurs, mosasaurs, and extinct relatives of crocodiles and turtles—filled many of the same niches cetaceans do today (3). While the land-to-sea transition in cetaceans is captured by a sequence of fossils, whose skeletal features (4, 5) and biological and

sensory abilities (6–8) have been studied in detail, far less is known about how Mesozoic reptiles moved into the water (9). This makes it difficult to address a key question: did evolution follow a similar path in modifying different groups of secondarily aquatic tetrapods for life in the open oceans?

Thalattosuchians, ancient relatives of modern crocodylians, lived during the Jurassic and Cretaceous (ca. 182–125 Ma). They are the only members of the archosaur clade—the hyperdiverse group that originated ca. 250 mya and includes birds, dinosaurs, and crocodiles—to develop fully pelagic swimming lifestyles.

Significance

During major evolutionary transitions, groups acquire a new body plan that allows them to colonize new habitats and behave in new ways. The evolution of swimming cetaceans from land-living mammals is a prime example. We document changes to the inner ear sensory system, involved in balance and equilibrium, as extinct crocodile relatives called thalattosuchians underwent a similar transition in the Mesozoic (ca. 182–125 mya). We find that open-ocean thalattosuchians developed strikingly compact and thickened bony labyrinth after a long semiaquatic phase and after modifying their skeleton to become better swimmers. This differs from cetaceans, which miniaturized their bony labyrinths soon after entering the water. Therefore, thalattosuchians and cetaceans took different evolutionary paths from land to water.

Author contributions: J.A.S., M.T.Y., S.W., L.M.W., Y.H., and S.L.B. designed research; J.A.S. performed research; R.A., C.A.B., J.N.C., J.M.C., K.N.D., S.E., G.F., P.M.G., A.R., S.S., A.H.T., P.V., E.W.W., X.X., and L.E.Z. contributed new reagents/analytic tools; J.A.S., M.T.Y., J.M.N., S.W., L.M.W., Y.H., and S.L.B. analyzed data; and J.A.S. and S.L.B. wrote the paper.

The authors declare no competing interest.

This article is a PNAS Direct Submission.

Published under the PNAS license.

Data deposition: The data for all 32 endosseous labyrinth models has been uploaded to Morphosource and can be accessed at https://www.morphosource.org/Detail/ProjectDetail/Show/project_id/952.

¹To whom correspondence may be addressed. Email: julia.schwab@ed.ac.uk.

This article contains supporting information online at <https://www.pnas.org/lookup/suppl/doi:10.1073/pnas.2002146117/-DCSupplemental>.

First published April 20, 2020.

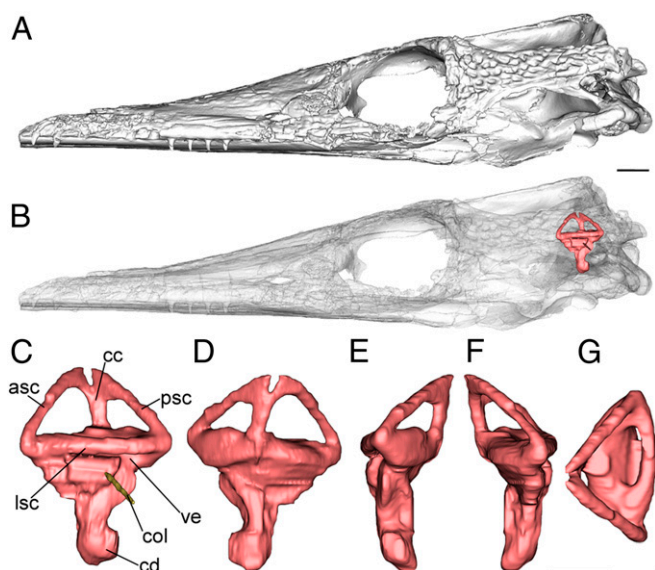


Fig. 1. Left bony labyrinth of the extinct thalattosuchian crocodylomorph *Pelagosaurus typus* (NHMUK PV OR 32599) based on CT data; (A) lateral view of the skull. (B) Transparent skull showing the position of the endosseous (bony) labyrinth; (C) lateral view; (D) medial view; (E) posterior view; (F) anterior view; and (G) dorsal view of the bony labyrinth. Abbreviations: asc, anterior semicircular canal; cc, crus commune; cd, cochlear duct; col, columella; lsc, lateral semicircular canal; psc, posterior semicircular canal; ve, vestibule. (Scale bars equal 1 cm.)

Thalattosuchians evolved from terrestrial ancestors (10), and include two main subgroups whose habitats are known from anatomical and geological evidence: semiaquatic nearshore teleosauroids, which resembled extant gharials (11), and fast-swimming open-ocean metriorhynchids, whose flippers, tail flukes, and streamlined bodies are often compared to cetaceans (3, 12, 13). Thalattosuchians are unique among marine reptiles in having their evolutionary transition documented by a series of well-preserved fossils with well-understood phylogenetic relationships, and having close living relatives (crocodylians) whose anatomy and biology can be directly observed. Thus, thalattosuchians can give critical insight into how reptiles became pelagic, and whether they underwent a similar evolutionary transformation as cetaceans.

We here study evolutionary trends in one of the most important vertebrate sensory systems—the inner ear—as thalattosuchians relocated from land to water, using high-resolution computed tomography (CT) scanning of 18 extinct species and 14 modern relatives for comparison. We focus on the endosseous labyrinth of the inner ear (Fig. 1), the bony cavity that housed the membranous sensory system. It is comprised of the vestibular system including the three semicircular ducts that detect angular acceleration and the vestibule (containing the saccule, utricle, and otolith organs) that detects linear acceleration and gravity (14). As a crucial component of the system of balance and equilibrium, bony labyrinth morphology is regularly used to reveal insights into ancient animal behavior and lifestyles (e.g., refs. 15–17). Because of the physical differences between air and water, this system should—and does—differ in terrestrial and aquatic species (18). In cetaceans, the labyrinth became highly reduced soon after they entered the water, without a long intermediate semiaquatic phase (6). One marine reptile group, pliosauroids, developed slightly smaller but more bulbous labyrinths as they changed from nearshore bottom walkers to pelagic swimmers (9). It is unclear whether other marine reptiles followed these or other evolutionary routes, which if so might speak to more general "rules" of how tetrapods become secondarily aquatic. Thalattosuchians provide a test.

Results

Crocodylomorph semicircular canal and vestibular shape reflects ecomorphology and habitat, which are independently known for all species based on osteological and environmental evidence (Fig. 2 and *SI Appendix, Table S2*). Terrestrial species have a dorsoventrally tall labyrinth, with a particularly high anterior semicircular canal. The canal cross-sections are slender, the crus commune is narrow, and the vestibule is elongate mediolaterally. In contrast, pelagic metriorhynchids have a dorsoventrally short (compact) labyrinth. The anterior canal is only slightly higher than the posterior one, and both the crus commune and the canals have thick cross-sectional diameters. Semiaquatic teleosauroids and extant crocodylians have an intermediate labyrinth morphology, with dorsoventrally taller semicircular canals than the pelagic forms but a more compact labyrinth than the terrestrial species. These bony labyrinth shape differences between habitat groups are corroborated by numerical analyses.

Principal component analysis (PCA) of three-dimensional (3D) geometric morphometric landmarks on the semicircular canals ordinated species into a morphospace in which the first three axes describe 53.50% of overall variance (Fig. 3). The first principal component axis (PC1), explaining 22.67% of variance, represents the dorsoventral depth of the labyrinth and canal cross-sectional thickness, and segregates species by habitat. The three derived pelagic metriorhynchids (*Cricosaurus araucanensis*, *C. schroederi*, and *Torvoneustes coryphaeus*) have the most positive PC1 scores, due to their dorsoventrally compressed labyrinths and thick canals. The three terrestrial taxa (*Junggarsuchus sloani*, *Protosuchus haughtoni*, and a "sphenosuchian") have the most negative PC1 scores, because of their tall labyrinths and thin canals. Various semiaquatic taxa, including extinct teleosauroids and extant crocodylians, occupy an intermediate region between these extremes. Habitat differences are reflected to a lesser extent on PCs 2 and 3 (18.44% and 12.39% of variance, respectively).

A statistical test of morphospace occupation (PERMANOVA) upholds the observation that habitat groups form clusters, in which terrestrial, semiaquatic, and pelagic species are each significantly

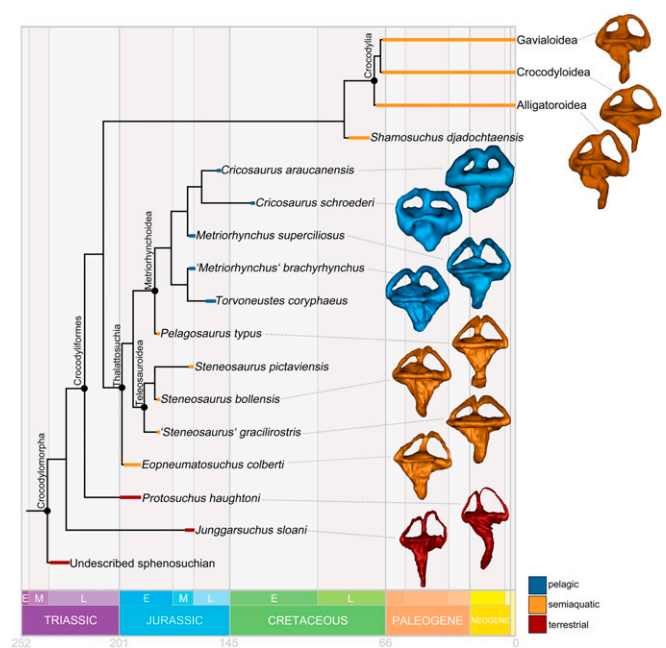


Fig. 2. Simplified time-scaled phylogeny showing right bony labyrinth shapes of key extinct and extant crocodylomorphs of different habitats. Labyrinths are not to scale.

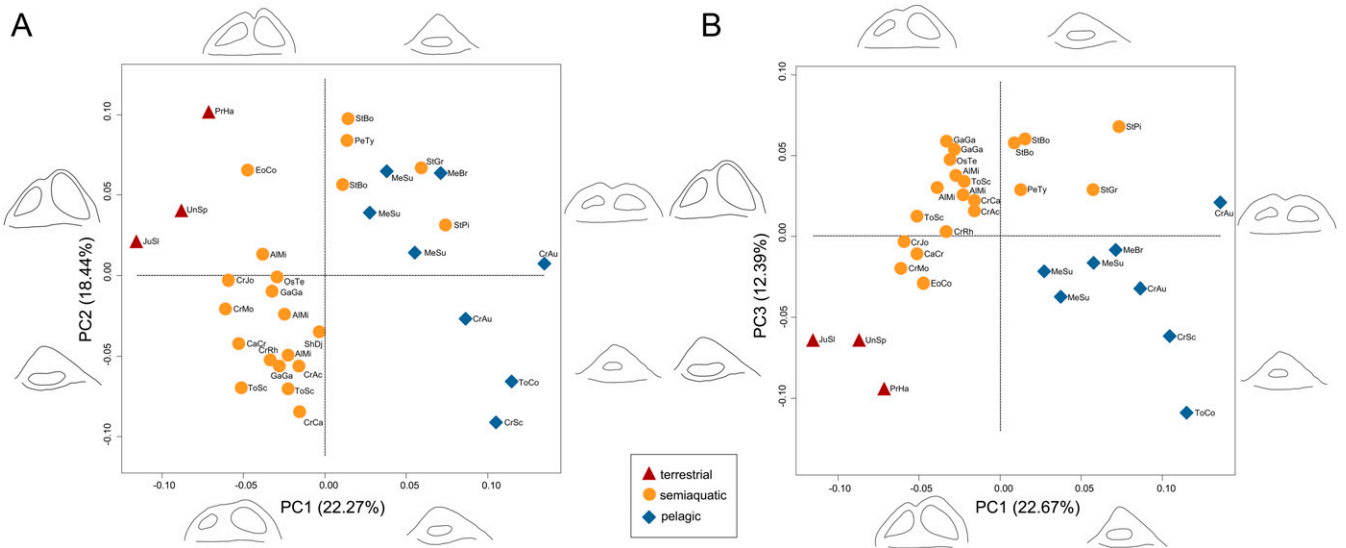


Fig. 3. Bony labyrinth shape morphospaces, showing the distribution of extinct and extant crocodylomorphs of different habitats, based on principal component analysis of 3D landmarks. (A) PC1 vs. PC2; (B) PC1 vs. PC3. Labyrinth outline diagrams correspond to morphological extremes at the ends of PC axes, in lateral and dorsal views. For taxa abbreviations see *SI Appendix, Table S1*.

separated from one another (P value < 0.005 ; *SI Appendix, Table S5*).

A canonical variate analysis (CVA) of the PC scores demonstrates that bony labyrinth shape predicts habitat. When all crocodylomorphs are placed into habitat groupings predetermined from osteological and environmental evidence, and individual taxa are then iteratively treated as having an unknown habitat, the CVA classifies them into the correct habitat 100% of the time (Fig. 4 and *SI Appendix, Table S6*).

Because the relationship between bony labyrinth shape and habitat may be confounded by phylogeny and labyrinth size, we further explored the relationships between these variables using phylogenetic comparative methods. Pagel's lambda shows that there is a strong and significant phylogenetic signal on PC1 and PC3, whereas PC2 has a weaker but still significant signal (*SI*

Appendix, Table S7). Thus, we employed phylogenetic regressions (pGLS), which found that PC1 is significantly correlated with habitat even when phylogeny is accounted for, whereas PC2 and 3 are not. PC1 remains significantly correlated with habitat in a second phylogenetic regression on size-corrected residuals, necessitated because of the significant relationship between PC1 and labyrinth size (centroid size). This is strong evidence that, regardless of phylogeny and size, the shape of the bony labyrinth is strongly correlated with habitat.

A trend is apparent when PC1—the axis most strongly correlated with habitat—is optimized onto crocodylomorph phylogeny (Fig. 5). Terrestrial species with negative PC1 scores occupy basal positions, as outgroups to the clade of thalattosuchians and extant crocodylians. On the thalattosuchian line toward pelagic metriorhynchids, the early-diverging *Eopneumatosuchus colberti*,

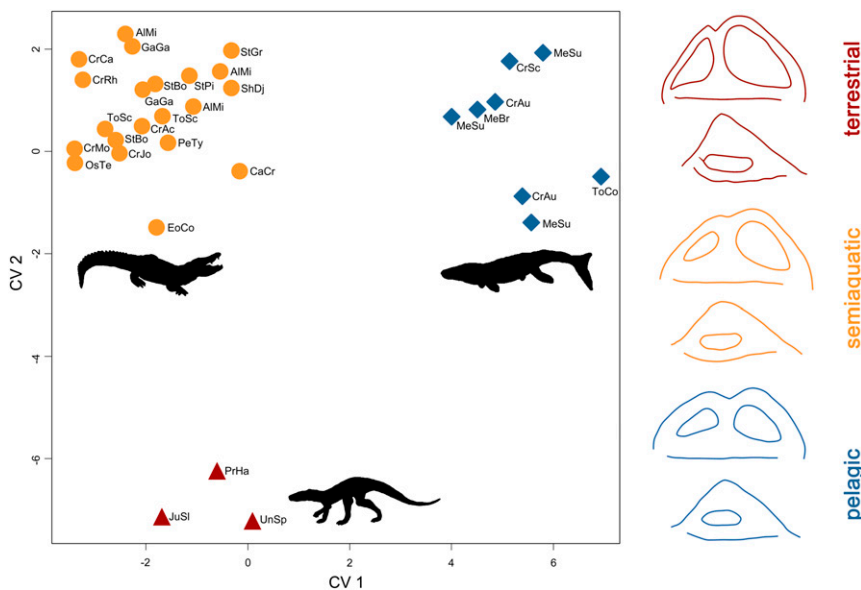


Fig. 4. Bony labyrinth shape morphospace, showing the distribution of extinct and extant crocodylomorphs of different habitats, based on canonical variate analysis of PC scores (Fig. 3), with mean labyrinth shapes for each habitat group, in lateral (*Top*) and dorsal (*Bottom*) views.

teleosauroids, and the basal metriorhynchoid *Pelagosaurus typus* form a grade of semiaquatic taxa with intermediate PC1 scores. PC1 scores become progressively more positive along this grade, culminating in the high PC1 scores of metriorhynchids. The most extreme labyrinth shapes, denoted by the highest PC1 scores, appear independently in two pelagic metriorhynchid subgroups: Geosaurinae (with *T. coryphaeus*) and Metriorhynchinae (with *C. schroederi* and *C. araucanensis*). Modern crocodylians exhibit a similar semiaquatic morphology as teleosauroids.

When we fit five standard models of trait evolution to PC1 scores across phylogeny, we found that an early burst model was best supported for the entire tree of extinct and extant crocodylomorphs, whereas a Brownian motion with directional trend model best fit the tree with extinct species only (SI Appendix, Table S10). Furthermore, when the phylogeny is plotted such that the *x* axis is scaled to time and the *y* axis to PC1 score, metriorhynchids/thalattosuchians are found to have higher rates of PC1 evolution than other crocodylomorphs (SI Appendix, Fig. S7). These results support the hypothesis that there was an evolutionary trend of increasingly specialized labyrinth shape in pelagic thalattosuchians, which involved relatively rapid rates of change compared to the background.

The cochlear duct is more challenging to characterize with landmarks than the semicircular canals, but a linear regression shows that minimum cochlear duct length correlates positively with labyrinth length. Pelagic metriorhynchids fall below the regression line, indicating that they had shorter cochlear ducts than other crocodylomorphs even when labyrinth length is held

constant, which may indicate reduced hearing frequency ranges (ref. 19 and SI Appendix, Fig. S8).

Discussion

We find that the shape of the crocodylomorph vestibular system corresponds to habitat, in extinct and extant species spanning more than 200 million years of evolution. There are distinct terrestrial, semiaquatic, and pelagic clusters in endosseous labyrinth morphospace, and transitions between these labyrinth types on the phylogeny. Fully pelagic Mesozoic metriorhynchids have the most transformed vestibular systems, relative to their immediate extinct semiaquatic kin, extant semiaquatic crocodylians, and terrestrial antecedents near the base of the phylogeny. In particular, metriorhynchids have a reduced, dorsoventrally shortened labyrinth with thickened semicircular canal diameters and an enlarged vestibule.

The metriorhynchid condition is reminiscent of modifications to labyrinth size and shape in other aquatic tetrapods that evolved from terrestrial ancestors. Swimming sauropterygian reptiles have smaller labyrinths than their nearshore bottom-walking relatives, and the most pelagic, fastest-swimming species (such as plesiosaurs) have compact and bulbous labyrinths with wide semicircular canal diameters, comparable to metriorhynchids like *Cricosaurus* and *Torvoneustes* (9, 20) and also sea turtles (18, 21). Cetaceans have miniaturized labyrinths, approximately 3 times smaller than terrestrial mammals of equivalent body size, although not drastically different in shape (6, 22). Aquatic mammals, like sirenians and seals, also reduced

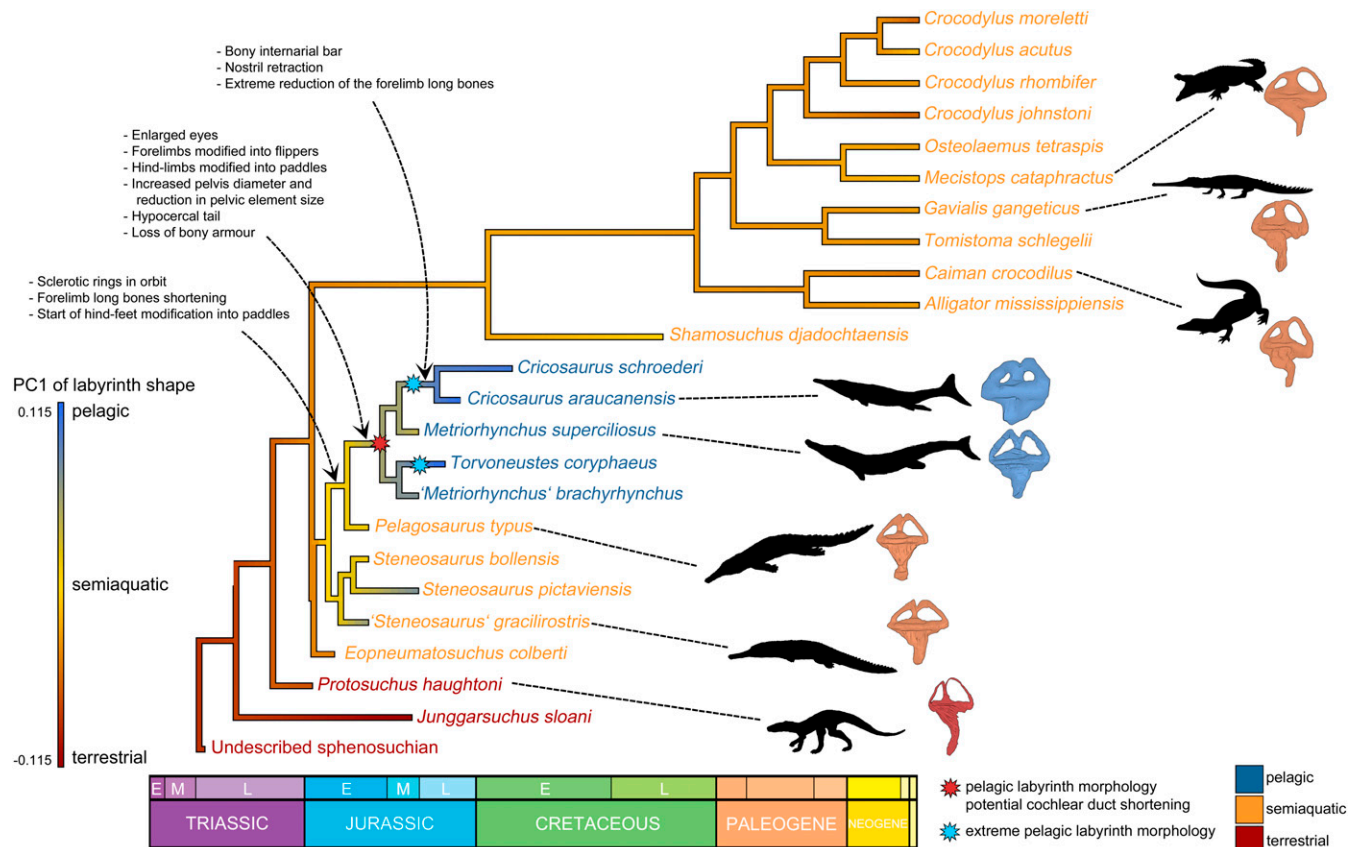


Fig. 5. Pelagic adaptations plotted on a time-scaled crocodylomorph phylogeny. PC1 scores of labyrinth shape, which are correlated with habitat (Figs. 3 and 4), are optimized on the phylogeny to predict ancestral states for the major clades, demonstrating a trend of increasing PC1 scores (increasingly pelagic-shaped ears) in thalattosuchians. Key cranial and postcranial features related to aquatic lifestyles are listed next to the nodes at which they appeared, based on optimizations (43). This demonstrates that thalattosuchians first developed features permitting aquatic locomotion before they developed a modified pelagic labyrinth morphology.

their canals to a lesser degree (22–24). Thus, distantly related radiations of marine reptiles independently evolved similar compact, robust, but not extremely atrophied cetaceanlike labyrinths, suggesting a general manner in which reptile vestibular sensory systems are altered for a pelagic lifestyle. More broadly, despite differences between labyrinths of pelagic reptiles and cetaceans, both exhibit labyrinth size reductions and shape modifications. This appears to be a common theme for secondarily aquatic tetrapods, transcending phylogenetic distance, tens of millions of years of time, and vastly different swimming styles (slower lateral tail undulation of reptiles vs. faster dorsoventral movements of cetaceans; ref. 25).

Similarities in labyrinth morphology indicate common physical constraints acting on agile, swimming tetrapods in the open water, but interpreting the functional significance of labyrinth size and shape changes is challenging. Longer and more arching semicircular canals are more sensitive to rotations in space (6, 26). The reduced canals of cetaceans may prevent overstimulation during exaggerated head movements associated with swimming and diving, which cannot easily be stabilized by their shortened necks (6). However, experimental evidence that extant cetaceans experience similar head accelerations as terrestrial mammals is inconsistent with this hypothesis (27). That said, it is notable that metriorhynchids, like some sauropterygians and cetaceans, have shorter necks than their close relatives (five instead of seven postaxial cervical vertebrae; refs. 11, 28), hinting that neck length may be a factor in labyrinth modifications. Perhaps the shorter neck made the head more integrated with the torso, resulting in a larger and more drag-prone head–body unit that made vestibular sensitivity less important. Alternatively, because the vestibular system is also involved in head and gaze stabilization, its reduction may reflect lesser reliance on terrestrial-style vision (compared to other senses) in pelagic species (29). Less clear is why the semicircular canals and vestibule are expanded in cross-section in metriorhynchids and other pelagic marine reptiles (9). The expansive vestibule may have housed a larger otolith, a calcium carbonate structure that is involved in perceiving linear acceleration and gravity. Large otoliths are seen in aquatic mammals such as cetaceans, sirenians, and pinnipeds (7, 22, 30), but otoliths are not visible in any of our fossil CT scans. Future work is needed to understand how bony labyrinth shape corresponds to the enclosed structures involved in sensory processing (membranous labyrinth and otoliths), and engineering techniques like computational fluid dynamics may be particularly fruitful for testing functional hypotheses (31).

The rich record of thalattosuchian fossils spanning the land-to-sea transition makes them an exemplar for illuminating evolutionary trends in secondarily aquatic reptiles, and for comparing to the well-known transitional sequence of early cetaceans. Thalattosuchians developed fully pelagic species after a long semiaquatic phase on the phylogeny, represented by the grade of close thalattosuchian outgroups, teleosauroids, and basal metriorhynchoids on the line to pelagic metriorhynchids like *Cricosaurus* and *Torvoneustes* (Fig. 5). Ancestral character state reconstructions demonstrate that this grade maintained semiaquatic labyrinth shapes along a lengthy series of internal branches, before the signature compact and bulbous pelagic labyrinths evolved in derived metriorhynchids. Pelagic labyrinths appeared after the first changes to the postcranial skeleton that allowed thalattosuchians to locomote in the water, such as shortening of the forelimbs and the modification of hindlimbs into paddles. Thus, changes to the vestibular system apparently did not lead the transition, but likely were a response to changing sensory requirements as metriorhynchids moved into deeper, more open waters. Furthermore, after the transition occurred, semiaquatic teleosauroids persisted alongside pelagic metriorhynchids for tens of millions of years (32).

Cetaceans, on the other hand, did not have such a prolonged semiaquatic phase, and the labyrinth became miniaturized rapidly as early cetaceans entered marine environments, followed by gradual changes to the postcranial skeleton associated with powerful swimming (6). The basal cetaceans that we consider most skeletally analogous to semiaquatic thalattosuchians—the nearshore remingtonocetids, which had teleosauroidlike elongate snouts, comparatively long necks, forelimbs and hindlimbs used in swimming, and robust pelvis (1, 33)—had miniaturized pelagic-style labyrinths, and flourished for only a few million years. It may be that cetaceans were able to adapt more quickly to fully pelagic lifestyles, because they evolved from terrestrial ancestors that were already endothermic and gave live birth, whereas metriorhynchids had to develop these attributes after entering the water (34, 35).

Thalattosuchian crocodylomorphs are a prime example of a major evolutionary transition, and their vestibular sensory systems changed as they left the land and adapted to the water. It was a phylogenetically lengthy transition with a long semiaquatic stage, seemingly led by changes in the skeleton, related to locomotion, that allowed thalattosuchians to move in the water, followed by modifications to at least one sensory system. Key open questions, to test with future fossil discoveries and CT analyses, are how fast (in temporal terms) metriorhynchids developed a pelagic labyrinth after splitting from their semiaquatic ancestors, and how other sensory systems changed during this transition. Thalattosuchians (and other marine reptiles), like cetaceans, dramatically altered their labyrinths when becoming secondarily aquatic, but they did so in different ways and at different paces. Evolutionary transitions can start and finish in the same places, but take different routes depending on the organisms involved.

Methods

Dataset. We compiled a dataset of extinct and extant crocodylomorph endosseous labyrinths, using computed-tomography scanning. Our extinct (fossil) sample (18 specimens) includes all thalattosuchians with well-preserved skulls that were accessible to us (13 specimens, including 4 teleosauroids, the basal metriorhynchoid *Pelagosaurus typus*, and 8 metriorhynchids), two basal "sphenosuchian"-grade taxa, *Protosuchus haughtoni*, *Eopneumatosuchus colberti*, and the neosuchian *Shamosuchus djadochtaensis*. These taxa span much of the evolutionary history of crocodylomorphs, from the Late Triassic to Early Cretaceous, and include a series of fossil outgroups that polarize the primitive conditions for Thalattosuchia, our main clade of interest (Fig. 2). To this dataset, we added 14 extant crocodylians for comparative purposes, including members of the 3 major extant lineages (Alligatoroidea, Crocodyloidea, and Gavialoidea) (*SI Appendix, Table S1*). Our dataset includes only adult and subadult specimens. For specimen details, see *SI Appendix*.

Ecological Categories. Our dataset includes species belonging to three ecomorphological or habitat groups: terrestrial, semiaquatic, and pelagic (i.e., fully aquatic). All extant crocodylians are semiaquatic, as extensive observational data show that they move between the land and nearshore aquatic habitats (36). The habitats of extinct species were assigned based on a combination of osteological and geological (environmental) data (*SI Appendix, Table S2*).

Data Assembly. Skulls were CT scanned at various facilities, so the scanners and scanning parameters vary (*SI Appendix, Table S1*). Some scans were sourced from the online databases Morphosource (<https://www.morphosource.org/>) and Digimorph (<http://digimorph.org/>). Bony labyrinths were segmented from the scans using Materialise Mimics 19.0 and 20.0, using the livewire and lasso tools. We segmented right labyrinths and retained them for the numerical analyses (see below); if these were not preserved, then the left labyrinth was segmented and mirrored. A recent study found no significant bilateral variation in the inner ears of wild turkeys (37), justifying this procedure. We also show that left–right asymmetry is minimal in extant crocodylians (*SI Appendix, Figs. S9 and S10*).

Geometric Morphometric Analysis. For each 3D rendered endosseous labyrinth model, we placed two series of semilandmarks along each of the semicircular canals, one on the internal surface and one on the external surface (*SI Appendix, Fig. S1*), using the IDAV Landmark software (38). The landmarks were digitalized using the `digit.curves()` function in the `geomorph` 3.1.2 package (39) in RStudio (40) to evenly spaced semilandmarks, 11 on the internal surface and 12 on the external surface. Landmarks on the internal surface of the canals were treated as closed structures, and those on the external surface as open structures. Subsequently, we applied Procrustes superimposition to minimize the effects of size and orientation.

Multivariate Analyses. We subjected the Procrustes-corrected geometric morphometric landmark dataset to principal component analysis in `geomorph` 3.1.2, which assimilates data from all landmarks and reduces them to a set of PC scores that summarize the labyrinth shape of each species, and allow the species to be plotted in a morphospace. We used PERMANOVA to test whether different habitat groups (terrestrial, semiaquatic, pelagic) are significantly separated from each other in the PCA morphospace using the `pairwiseAdonis()` function in `vegan` 2.5–3 (41). We calculated the mean shape for each habitat group in morphospace, along with the extreme shapes on the ends of each PC axis. We also performed a canonical variate analysis in `Morpho` 2.6 (42) to test the ability of the PC scores to assign individuals to known ecological categories.

Phylogenetic Comparative Methods. For the following phylogenetic methods, we utilized a consensus phylogeny of Crocodylomorpha based on the latest iteration of the Crocodylomorph SuperMatrix Project (43–45). The relationships of the species in our dataset are generally well resolved, but a few taxa are labile in recent phylogenetic analyses. Thus, as a sensitivity analysis, we repeated phylogenetic methods on a set of alternative phylogenies. The results were generally identical to the results gleaned from our consensus phylogeny, and we report the details in the *SI Appendix*. In all phylogenetic comparative analyses, the trees were time scaled using `strap` 1.4 (46) and zero-length branches were extended using the "equal" method (47).

We tested for phylogenetic signal in the PC scores with Pagel's lambda (λ), using `phytools` 0.6 in R (48). A λ value close to 1.0 indicates strong phylogenetic signal, with correlation between species equal to the Brownian motion expectation that phylogeny alone can explain trait changes (49), whereas values close to zero indicate no such phylogenetic correlation between species. The λ values are associated with a P value, denoting significance or nonsignificance.

We tested the correlations of labyrinth shape, labyrinth size, and habitat, using phylogenetic generalized least square regression in the R package `nlme` 3.1 (50), which accounts for the nonindependence of species due to phylogenetic relationships (51, 52). We performed three series of pGLS. First, we tested for correlations between raw PC scores and labyrinth size, as denoted by centroid size. Second, we tested for correlations between raw PC scores and habitat. Third, because the first pGLS found a significant relationship between labyrinth shape and size, we calculated residuals of raw PC scores vs. size, and then used the residuals in a further pGLS to test the relationship between size-corrected PC scores and habitat. We experimented with allowing the strength of phylogenetic signal (λ) to vary as a free parameter, but set $\lambda = 1.0$ (equivalent to pGLS assuming Brownian motion) because Pagel's lambda indicated a strong phylogenetic signal (see above and *SI Appendix, Table S7*).

We optimized PC scores as a continuous variable onto the phylogeny, in order to predict ancestral states for major clades and assess evolutionary trends (Fig. 5). Optimizations were performed using maximum likelihood using the `fastAnc()` function in `phytools` 0.6 (*SI Appendix, Figs. S2–S4*).

We fitted five standard models of trait evolution to the PC scores on the phylogeny: Brownian motion, Ornstein–Uhlenbeck (OU), early burst, Brownian motion with directional trend, and Lambda (Pagel). The fit of each model was assessed with maximum likelihood and the best supported model was determined by the lowest AICc score, using the R package `geiger` 2.0.6.2 (53). Further information on the mathematical properties of each model can be found in refs. 54–59. We recognize that interpretation of OU models can be complex and sometimes mimic other models (60), but include them here for completeness.

Testing whether certain portions of the phylogeny have variable rates of labyrinth shape evolution is challenging, because PC scores and continuous data present problems compared to discrete characters (61). To visualize rates of evolution, we used `phytools` to plot a phylogeny in which the x axis is scaled to time and the y axis to PC1 value. The slopes of individual branches give an indication of which parts of the tree underwent faster or slower rates of shape evolution. We emphasize that this is a visual method and not a statistical test.

Cochlear Duct Measurements. We did not use 3D landmarks to quantify the shape of the cochlear duct, because the distal end is difficult to discern in CT scans, as is often not enclosed by bone. This issue also characterizes other reptile groups (21). Given these uncertainties, we favored a straightforward approach of measuring minimum cochlear duct length and using pGLS to test for correlation with specimen size. Developing a proxy for specimen size is challenging. Most of the specimens we CT scanned are skulls (often partial skulls) not associated with the postcranial bones needed to robustly estimate body mass or length. Other authors (9) have used skull length as a proxy for head size (either as a proxy for body size or to directly examine the relationship between labyrinth shape and head size), but this too is difficult for crocodylomorphs because snout length and skull proportions vary drastically within the group (62). Thus, in our cochlear duct length regression, we used the distance between the vestibules of the right and left labyrinths as a measure of specimen size, as head width is highly correlated with measures of body size in extant species (63). We realize, however, that this is a nuanced measure of specimen size, which is why we did not use it more extensively to represent specimen/head/body size to test for relationships with labyrinth size, shape, and linear measurements, as other authors have done (e.g., refs. 6 and 9).

Data Availability. The data for all 32 endosseous labyrinth models has been uploaded to Morphosource (<https://www.morphosource.org>) and can be accessed here: https://www.morphosource.org/Detail/ProjectDetail/Show/project_id/952.

ACKNOWLEDGMENTS. We thank two anonymous reviewers for helpful suggestions; Olivier Lambert and Travis Park for discussion of cetaceans; Graeme Lloyd and Manabu Sakamoto for methodological advice; and Davide Foffa for statistical support. We are grateful to Susannah Maidment (Natural History Museum, London), Orestis Katsamenis (University of Southampton) and Philipp Koch (Mindener Museum, Germany) for access to their specimens. This project is supported by a Leverhulme Trust Research Project grant (RPG-2017-167) to PI S.L.B., which funds J.A.S. and M.T.Y. J.A.S. was supported by the Carl Gans Fund to attend the ICVM-19 meeting. J.M.N. is funded by a Leverhulme Trust Early Career Fellowship (ECF-2017-360). Y.H. was supported by a Humboldt Research Fellowship from the Alexander von Humboldt Foundation and the ANPCyT (PICTs 2016-0267, 2016-1039). P.M.G. was supported by a National Science Foundation grant (DEB 1754659). A.H.T. and E.W.W. were supported by a National Science Foundation grant (DEB 1754596). X.X. was supported by a National Natural Science Foundation of China grant (41688103).

1. J. Gatesy *et al.*, A phylogenetic blueprint for a modern whale. *Mol. Phylogenet. Evol.* **66**, 479–506 (2013).
2. R. Motani, The evolution of marine reptiles. *Evol. Educ. Outreach* **2**, 224–235 (2009).
3. D. Foffa, M. T. Young, T. L. Stubbs, K. G. Dexter, S. L. Brusatte, The long-term ecology and evolution of marine reptiles in a Jurassic seaway. *Nat. Ecol. Evol.* **2**, 1548–1555 (2018).
4. P. D. Gingerich, S. M. Raza, M. Arlf, M. Anwar, X. Zhou, New whale from the Eocene of Pakistan and the origin of cetacean swimming. *Nature* **368**, 844–847 (1994).
5. J. G. M. Thewissen, E. M. Williams, L. J. Roe, S. T. Hussain, Skeletons of terrestrial cetaceans and the relationship of whales to artiodactyls. *Nature* **413**, 277–281 (2001).
6. F. Spoor, S. Bajpai, S. T. Hussain, K. Kumar, J. G. M. Thewissen, Vestibular evidence for the evolution of aquatic behaviour in early cetaceans. *Nature* **417**, 163–166 (2002).
7. F. Spoor, J. G. M. Thewissen, "Comparative and functional anatomy of balance in aquatic mammals" in *Sensory Evolution on the Threshold: Adaptations in Secondarily Aquatic Vertebrates*, J. G. M. Thewissen, S. Nummela, Eds. (University of California Press, 2008), pp. 257–286.
8. E. G. Eklade, "The ear of mammals: From monotremes to humans" in *Evolution of the Vertebrate Ear*, J. A. Clack, R. R. Fay, A. N. Popper, Eds. (Springer International Publishing, 2016), pp. 175–206.
9. J. M. Neenan *et al.*, Evolution of the sauropterygian labyrinth with increasingly pelagic lifestyles. *Curr. Biol.* **27**, 3852–3858.e3 (2017).
10. R. B. Irmis, S. J. Nesbitt, H. Sues, Early Crocodylomorpha. *Geol. Soc. Lond. Spec. Publ.* **379**, 275–302 (2013).
11. C. W. Andrews, *Descriptive Catalogue of the Marine Reptiles of the Oxford Clay: Part II* (British Museum, Natural History, London, 1913).
12. M. T. Young, S. L. Brusatte, M. Ruta, M. B. Andrade, The evolution of Metriorhynchoidea (Mesoeucrocodylia, Thalattosuchia): An integrated approach using geometric morphometrics, analysis of disparity and biomechanics. *Zool. J. Linn. Soc.* **158**, 801–859 (2010).
13. M. T. Young, S. L. Brusatte, B. L. Beatty, M. B. De Andrade, J. B. Desojo, Tooth-on-tooth interlocking occlusion suggests macrophagy in the mesozoic marine crocodylomorph dakosaurus. *Anat. Rec. (Hoboken)* **295**, 1147–1158 (2012).

14. H. M. de Buriel, "Vergleichende anatomie des stato-akustischen organs [in German]" in *Handbuch der vergleichende Anatomie der Wirbeltiere* (Urban and Schwarzenberg, Berlin, 1934), vol. 2, pp. 1293–1432.
15. C. Pfaff, T. Martin, I. Ruf, Bony labyrinth morphometry indicates locomotor adaptations in the squirrel-related clade (Rodentia, Mammalia). *Proc. Biol. Sci.* **282**, 20150744 (2015).
16. A. Palci, M. N. Hutchinson, M. W. Caldwell, M. S. Y. Lee, The morphology of the inner ear of squamate reptiles and its bearing on the origin of snakes. *R. Soc. Open Sci.* **4**, 170685 (2017).
17. J. A. Schwab, G. W. Weber, C. Pfaff, Carnivoran hunting style and phylogeny reflected in bony labyrinth morphometry. *Sci. Rep.* **9**, 70 (2019).
18. J. A. Georgi, J. S. Sipla, "Comparative and functional anatomy of balance in aquatic reptiles and birds" in *Sensory Evolution on the Threshold: Adaptations in Secondarily Aquatic Vertebrates*, J. G. M. Thewissen, S. Nummela, Eds. (University of California Press, 2008), pp. 233–256.
19. S. A. Walsh, P. M. Barrett, A. C. Milner, G. Manley, L. M. Witmer, Inner ear anatomy is a proxy for deducing auditory capability and behaviour in reptiles and birds. *Proc. Biol. Sci.* **276**, 1355–1360 (2009).
20. J. M. Neenan, T. M. Scheyer, The braincase and inner ear of *Placodus gigas* (Sauriapterygia, Placodontia)—A new reconstruction based on micro-computed tomography data. *J. Vertebr. Paleontol.* **32**, 1350–1357 (2012).
21. S. Evers *et al.*, Neurovascular anatomy of the protostegid turtle *Rhinoclypeus pulchripes* and comparisons of membranous and endosseous labyrinth shape in an extant turtle. *Zool. J. Linn. Soc.* **20**, 1–29 (2019).
22. J. Hyrtl, *Comparative-Anatomical Studies on the Internal Auditory Organ of Humans and Mammals* [in German] (Ehrlich, Prague, 1845).
23. E. G. Ekdale, Comparative anatomy of the bony labyrinth (inner ear) of placental mammals. *PLoS One* **8**, e66624 (2013).
24. C. M. Loza, A. E. Latimer, M. R. Sánchez-Villagra, A. A. Carlini, Sensory anatomy of the most aquatic of carnivorans: The Antarctic Ross seal, and convergences with other mammals. *Biol. Lett.* **13**, 20170489 (2017).
25. J. A. Massare, Swimming capabilities of Mesozoic marine reptiles: Implications for method of predation. *Paleobiology* **12**, 187–205 (1988).
26. E. G. Ekdale, Form and function of the mammalian inner ear. *J. Anat.* **228**, 324–337 (2016).
27. B. M. Kandel, T. E. Hullar, The relationship of head movements to semicircular canal size in cetaceans. *J. Exp. Biol.* **213**, 1175–1181 (2010).
28. M. T. Young, M. B. Andrade, What is *Geosaurus*? Redescription of *Geosaurus giganteus* (Thalattosuchia: Metriorhynchidae) from the Upper Jurassic of Bayern, Germany. *Zool. J. Linn. Soc.* **157**, 551–585 (2009).
29. P. G. Cox, N. Jeffery, Morphology of the mammalian vestibulo-ocular reflex: The spatial arrangement of the human fetal semicircular canals and extraocular muscles. *J. Morphol.* **268**, 878–890 (2007).
30. A. A. Gray, "The labyrinth of the Carnivora" in *The Labyrinth of Animals: Including Mammals, Birds, Reptiles and Amphibians 1* (J. A. Churchill, London, 1907).
31. I. A. Rahman, Computational fluid dynamics as a tool for testing functional and ecological hypotheses in fossil taxa. *Paleontology* **60**, 451–459 (2017).
32. M. T. Young, S. Sachs, Evidence of thalattosuchian crocodylomorphs in the Portland Stone Formation (Late Jurassic) of England, and a discussion on Cretaceous teleosauroids. *Hist. Biol.*, 10.1080/08912963.2019.1709453 (2020).
33. R. M. Bebej, I. S. Zalmout, A. A. Abed El-Aziz, M. S. M. Antar, P. D. Gingerich, First remingtonocetid archaeocete (Mammalia, Cetacea) from the middle Eocene of Egypt with implications for biogeography and locomotion in early cetacean evolution. *J. Paleontol.* **89**, 882–893 (2015).
34. Y. Herrera *et al.*, Morphology of the sacral region and reproductive strategies of Metriorhynchidae: A counter-inductive approach. *Earth Environ. Sci. Trans. R. Soc. Edinb.* **106**, 247–255 (2017).
35. N. Séon *et al.*, Thermophysiology of Jurassic marine crocodylomorphs inferred from the oxygen isotope composition of their tooth apatite. *Philos. Trans. R. Soc. Lond. B Biol. Sci.* **375**, 20190139 (2020).
36. G. Grigg, D. Kirshner, *Biology and Evolution of Crocodylians* (CSIRO and Cornell University Press, 2015).
37. D. G. Cerio, L. M. Witmer, Intraspecific variation and symmetry of the inner-ear labyrinth in a population of wild turkeys: Implications for paleontological reconstructions. *PeerJ* **7**, e7355 (2019).
38. D. F. Wiley *et al.*, *Evolutionary Morphing* (IEEE, Washington, DC, 2005), pp. 431–438.
39. D. Adams, M. Collyer, A. Kalliontzopoulou, Geomorph: Software for Geometric Morphometric Analyses. R Package Version 3.1.0. <https://CRAN.R-project.org/package=geomorph>. Accessed 1 April 2020.
40. R Core Team, *R: A Language and Environment for Statistical Computing*, (R Foundation for Statistical Computing, Vienna, Austria, 2018).
41. J. Oksanen, R. Kindt, B. O'Hara, vegan: Community Ecology Package. R Package Version 2.5-3. <https://CRAN.R-project.org/package=vegan>.
42. S. Schlager, "Morpho and Rvcg-shape analysis in R" in *Statistical Shape and Deformation Analysis*, G. Zheng, S. Li, G. Székely, Eds. (Academic Press, 2017), pp. 217–256.
43. A. Ósi, M. T. Young, A. Galácz, M. Rabi, A new large-bodied thalattosuchian crocodyliform from the Lower Jurassic (Toarcian) of Hungary, with further evidence of the mosaic acquisition of marine adaptations in Metriorhynchoidea. *PeerJ* **6**, e4668 (2018).
44. M. M. Johnson, M. T. Young, S. L. Brusatte, Re-description of two contemporaneous mesorostrine teleosauroids (Crocodylomorpha, Thalattosuchia) from the Bathonian of England, and insights into the early evolution of Machimosaurini. *Zoo. J. Linn. Soc.*, 10.1093/zoolinnean/zl037 (2019).
45. M. T. Young *et al.*, Convergent evolution and possible constraint in the posterodorsal retraction of the external nares in pelagic crocodylomorphs. *Zool. J. Linn. Soc.*, in press.
46. M. A. Bell, G. T. Lloyd, Strap: Stratigraphic Tree Analysis for Palaeontology. R Package Version 1.4. <https://CRAN.R-project.org/package=strap>. Accessed 1 April 2020.
47. S. L. Brusatte, M. J. Benton, M. Ruta, G. T. Lloyd, Superiority, competition, and opportunism in the evolutionary radiation of dinosaurs. *Science* **321**, 1485–1488 (2008).
48. L. J. Revell, Phytools: An R package for phylogenetic comparative biology (and other things). *Methods Ecol. Evol.* **3**, 217–223 (2012).
49. M. Pagel, Inferring the historical patterns of biological evolution. *Nature* **401**, 877–884 (1999).
50. J. Pinheiro, D. Bates, S. DebRoy, D. Sarkar, R Core Team, nlme: Linear and Nonlinear Mixed Effects Models. R Package Version 3.1-141. <https://CRAN.R-project.org/package=nlme>. Accessed 1 April 2020.
51. A. Grafen, The phylogenetic regression. *Philos. Trans. R. Soc. Lond. B Biol. Sci.* **326**, 119–157 (1989).
52. F. J. Rohlf, Comparative methods for the analysis of continuous variables: Geometric interpretations. *Evolution* **55**, 2143–2160 (2001).
53. L. J. Harmon, J. T. Weir, C. D. Brock, R. E. Glor, W. Challenger, GEIGER: Investigating evolutionary radiations. *Bioinformatics* **24**, 129–131 (2008).
54. T. F. Hansen, Stabilizing selection and the comparative analysis of adaptation. *Evolution* **51**, 1341–1351 (1997).
55. B. C. O'Meara, C. Ané, M. J. Sanderson, P. C. Wainwright, Testing for different rates of continuous trait evolution using likelihood. *Evolution* **60**, 922–933 (2006).
56. G. Hunt, Measuring rates of phenotypic evolution and the inseparability of tempo and mode. *Paleobiology* **38**, 351–373 (2012).
57. G. J. Slater, L. J. Harmon, M. E. Alfaro, Integrating fossils with molecular phylogenies improves inference of trait evolution. *Evolution* **66**, 3931–3944 (2012).
58. G. J. Slater, Phylogenetic evidence for a shift in the mode of mammalian body size evolution at the Cretaceous-Palaeogene boundary. *Methods Ecol. Evol.* **4**, 734–744 (2013).
59. R. B. J. Benson, E. Starmer-Jones, R. A. Close, S. A. Walsh, Comparative analysis of vestibular ecomorphology in birds. *J. Anat.* **231**, 990–1018 (2017).
60. N. Cooper, G. H. Thomas, C. Venditti, A. Meade, R. P. Freckleton, A cautionary note on the use of Ornstein Uhlenbeck models in macroevolutionary studies. *Biol. J. Linn. Soc. Lond.* **118**, 64–77 (2016).
61. G. T. Lloyd, S. C. Wang, S. L. Brusatte, Identifying heterogeneity in rates of morphological evolution: Discrete character change in the evolution of lungfish (Sarcopterygii; Dipnoi). *Evolution* **66**, 330–348 (2012).
62. E. W. Wilberg, Investigating patterns of crocodyliform cranial disparity through the Mesozoic and Cenozoic. *Zool. J. Linn. Soc.* **181**, 189–208 (2017).
63. H. D. O'Brien *et al.*, Crocodylian head width allometry and phylogenetic prediction of body size in extinct Crocodyliforms. *Integr. Organismal Biol.* **1**, 1–15 (2019).