

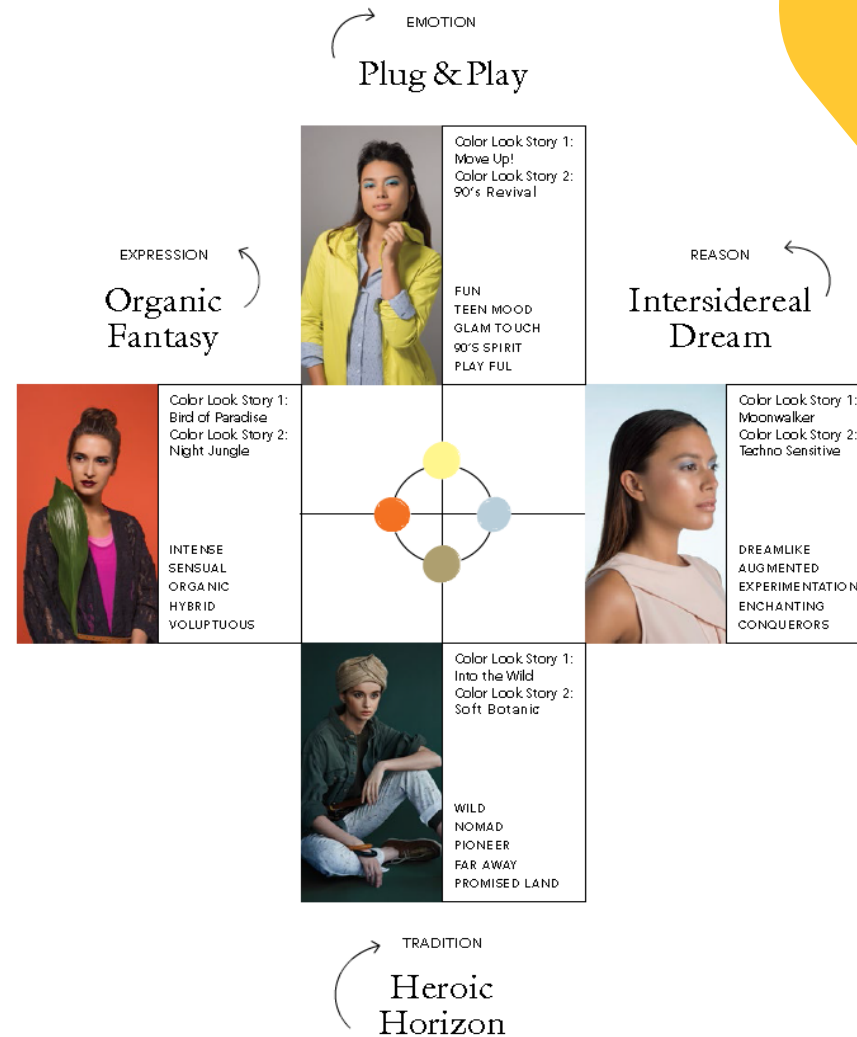


COLOR FORECAST SPRING-SUMMER 2017

March 2016

MERCK

Color Forecast Spring-Summer 2017 Overview

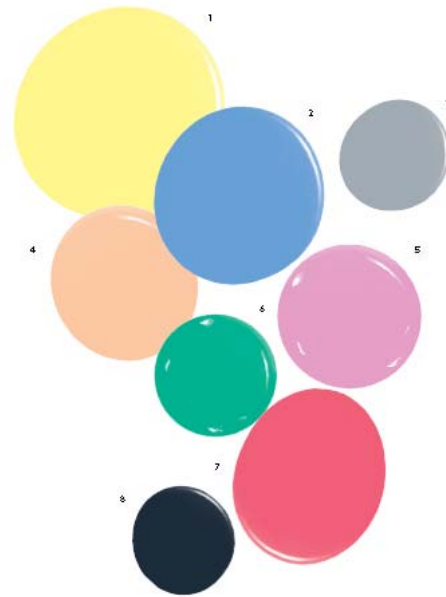
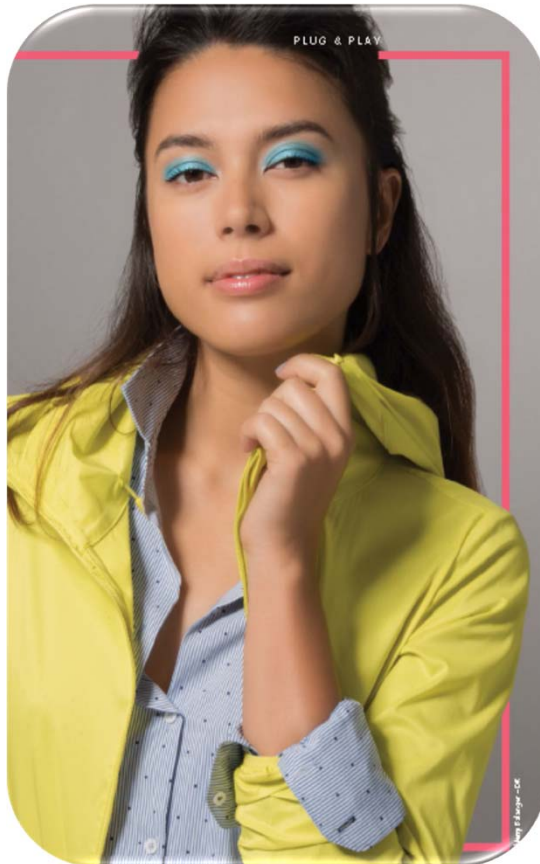




plug & play

Color Forecast Spring-Summer 2017

1/ Plug & Play



Main Color Range

- | | |
|---------------------|-------------------|
| 1 Lemonade Yellow | 5 Malabar Pink |
| 2 Lollipop Pastel | 6 Celadon Candy |
| 3 Hopscotch Grey | 7 Royal Raspberry |
| 4 Marshmallow Fever | 8 Acid Licorice |

EMOTION

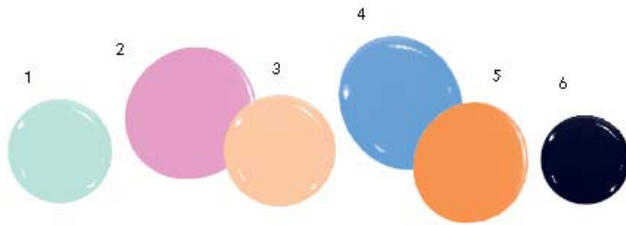
FUN
TEEN MOOD
GLAM TOUCH
90'S SPIRIT
PLAYFUL

Color Forecast Spring-Summer 2017

1/ Plug & Play: Look 1 – Move Up!

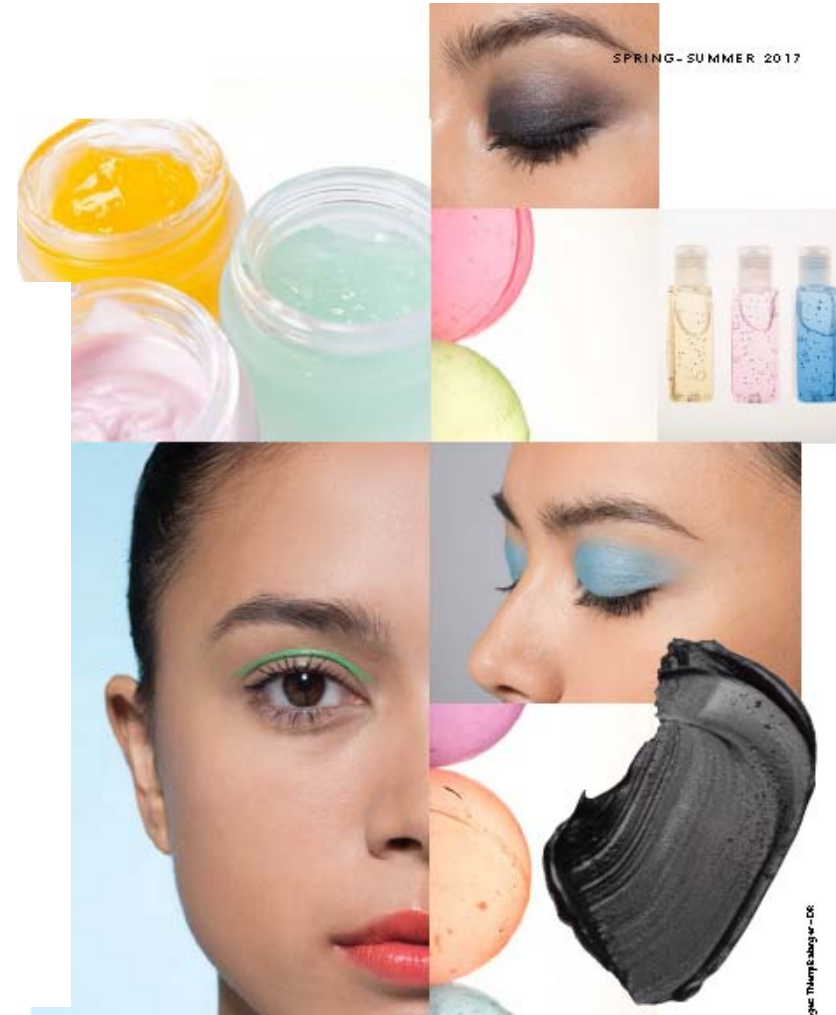


EYES 50%
LIPS 30%
NAILS 20%



- 1 Yoga Blue
- 2 Cheeky Pink
- 3 Malabar Bubble
- 4 Perfect Sky
- 5 Sweet Orangeade
- 6 Sparkling Facets

A fresh, radical, modern-retro palette. Acidic/pastel accents and cool tones. Summer's tried and true values, pinks and blues. A flamboyant orange is added to complete this graphic, architected base. Sparkling black for a touch of sophistication.



Color Forecast Spring-Summer 2017

1/ Plug & Play: Pigment blend S17-1

S 17-1 Move up!

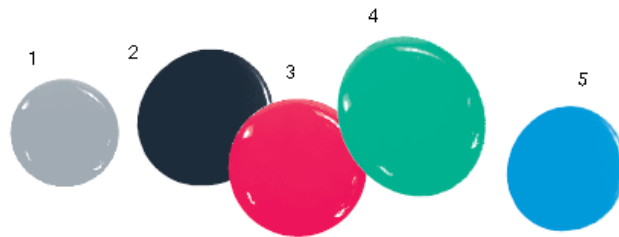
1.17478	Timiron® Splendid Copper	75 %
1.17089	Colorona® Tangerine Orange	25 %



Sweet Orangeade

Color Forecast Spring-Summer 2017

1/ Plug & Play: Look 2 – 90's Revival



- 1 Soft Grey
- 2 Asphalt Touch
- 3 Gourmand Lips
- 4 Balcony Green
- 5 Essential Blue

A range "back to basics" and gently neutral. Sophisticated greys to combine with fresh tones. The neutrals structure, stabilize and construct this range associated with the soft, peaceful rainbow colors. A city ambiance evoking a minimalist aesthetic.



Color Forecast Spring-Summer 2017

1/ Plug & Play: S17-11 Mascara „Bleached Black“

A	Ronastar® Diamond Black IQ	1.17790	(1)	CI 77499, ALUMINA, SILICA	10.00
	RonaFlair® Boroneige® SF-3	1.17774	(1)	BORON NITRIDE	2.00
	RonaCare® Biotin Plus	1.30221	(1)	UREA, DISODIUM PHOSPHATE, BIOTIN, CITRIC ACID	0.50
	1.3-Butanediol	8.01964	(1)	BUTYLENE GLYCOL	1.00
	AMP Ultra PC 1000		(2)	AMINOMETHYL PROPANOL	1.25
	Water, demineralized			AQUA	60.75
B	all-rac-alpha-Tocopheryl acetate	5.00952	(1)	TOCOPHERYL ACETATE	0.50
	Parteck® LUB STA 50	1.00661	(1)	STEARIC ACID	5.00
	Syncrowax HRC		(3)	TRIBEHENIN	3.50
	Tegin M		(4)	GLYCERYL STEARATE	3.50
	Wax white	1.11544	(1)	CERA ALBA	3.00

Notes

A combination of Ronastar® Diamond Black IQ and RonaFlair® Boroneige® SF-3 results in this attractive, glossy bleached black Mascara. RonaCare® Biotin Plus offers options to enhance the quality of the lashes.



Asphalt Touch



Color Forecast Spring-Summer 2017

1/ Plug & Play: S17-12 Lipstick „Bouncing Berry“

A Colorona® SynBerry Pink	1.17782 (1)	SYNTHETIC FLUORPHLOGOPITE, CI 77891, CI 75470, TIN OXIDE	12.50
Xirona® Le Rouge	1.17728 (1)	CI 77491, SILICA	2.50
Covapate Unired LC 3779	(2)	RICINUS COMMUNIS (CASTOR) SEED OIL, CI 15850	2.00
B Oxynex® K liquid	1.08324 (1)	PEG-8, TOCOPHEROL, ASCORBYL PALMITATE, ASCORBIC ACID, CITRIC ACID	0.05
Sensiva® PA20	(3)	PHENETHYL ALCOHOL, ETHYLHEXYL GLYCERIN	1.00
Paraffin viscous	1.07160 (1)	PARAFFINUM LIQUIDUM	2.10

Notes

Colorona® SynBerry Pink and Xirona® Le Rouge in combination with an organic red color dispersion are responsible for this strong pink color shade, very young and fresh. Oxynex® K liquid acts as an antioxidant for oils with low Tocopherol content.



Gourmand Lips



Color Forecast Spring-Summer 2017

1/ Plug & Play: S 17-13 Nail Polish „Urban Grey“

RonaFlair® Extender W	1.17311 (1)	MICA, CI 77891	3.60
Colorona® Mica Black	1.17260 (1)	CI 77499, MICA, CI 77891	0.40
Nail lacquer Base 12897	(2)	ETHYL ACETATE, BUTYL ACETATE, NITROCELLULOSE, PHTHALIC ANHYDRIDE/TRIMELLITIC ANHYDRIDE/GLYCOLS COPOLYMER, ACETYL TRIBUTYL CITRATE, ISOPROPYL ALCOHOL, STEARALKONIUM HECTORITE, ADIPIC ACID/ NEOPENTYL GLYCOL/TRIMELLITIC ANHYDRIDE COPOLYMER	96.00

Notes

A stunning and very interesting effect is shown in this light grey Nail Polish. Rona-Flair® Extender W together with Colorona® Mica Black make up this light grey color shade interspersed with subtle little black dots for a trendy new look.



Soft Grey





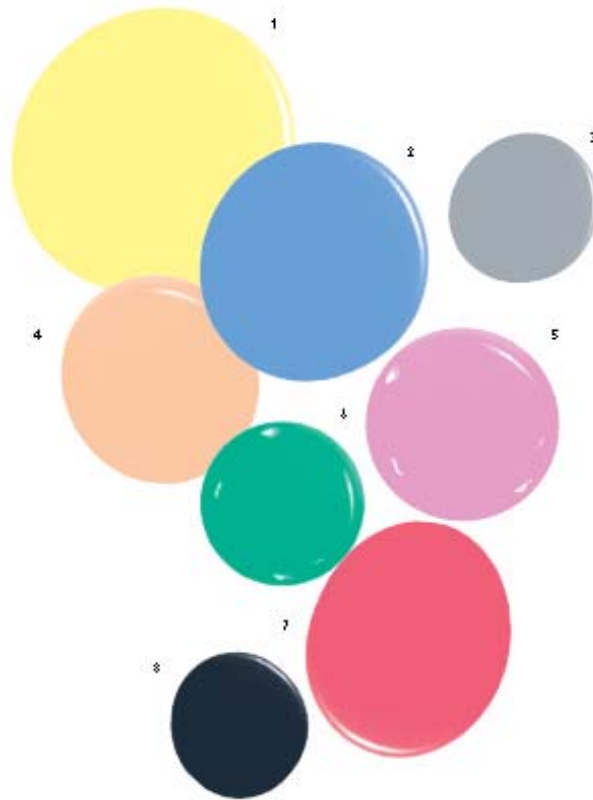
01

**packaging
inspiration
plug & play**

MERCK

Color Forecast Spring-Summer 2017

Packaging Inspirations



Link to season's main color range: beauty oriented, but also valid for lifestyle, design & fashion sectors

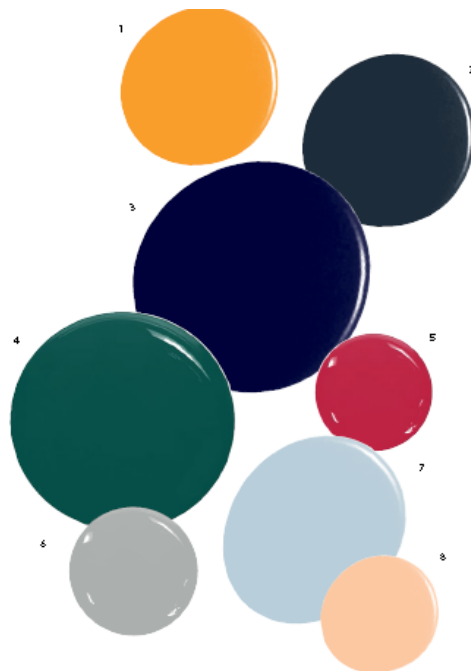
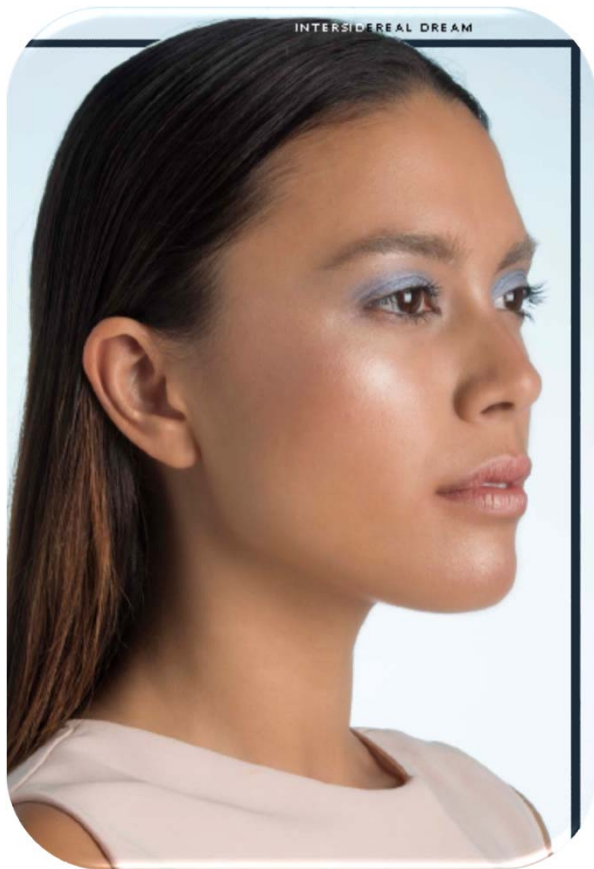


02 intersidereal
DREAM

MERCK

Color Forecast Spring-Summer 2017

2/ Intersidereal Dream



Main Color Range

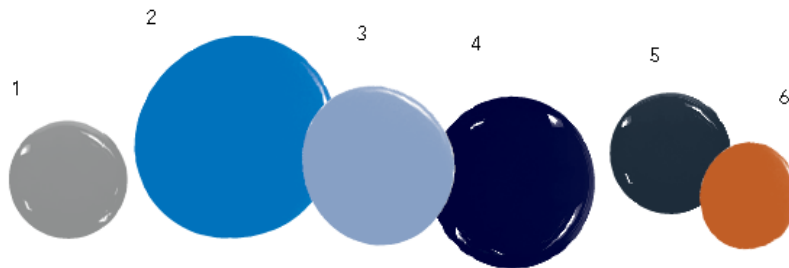
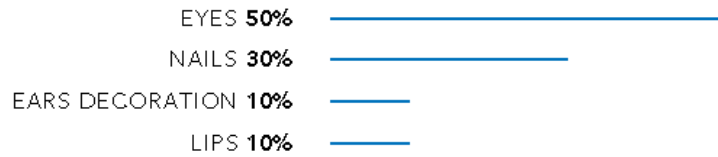
- | | |
|----------------------|---------------------|
| 1 Neon Orange | 5 Infra Red |
| 2 Misty Grey | 6 Meteorite Nugget |
| 3 Ozone Borealis | 7 Optical Cloud |
| 4 Interstellar Green | 8 Electronic Breeze |

REASON

DREAMLIKE
AUGMENTED
EXPERIMENTATION
ENCHANTING
CONQUERORS

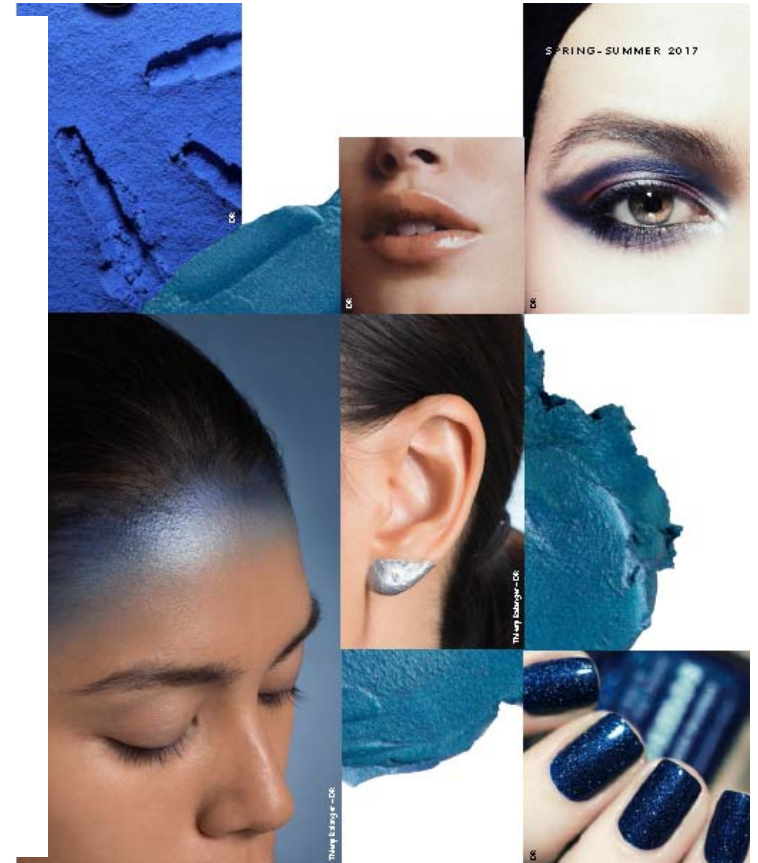
Color Forecast Spring-Summer 2017

2/ Intersidereal Dream: Look 1 - Moonwalker



- 1 Lunar Grey
- 2 Dreamy Azur
- 3 Misty Helium
- 4 Astral Violet
- 5 Lunar Asteroid
- 6 Galactic Terracotta

The moonwalker palette combines shades of sensual futurist greys with evanescent and dynamic blues perturbed by a sharp violet. A boldly contemporary ode to a glamorous astronaut.



Color Forecast Spring-Summer 2017

2/ Intersidereal Dream: S 17-21 Eyeshadow „Blue Vision“



A Timiron® Super Violet	1.17359 (1)	CI 77891, MICA, TIN OXIDE	20.00
Colorona® Dark Blue	1.17324 (1)	MICA, CI 77891, CI 77510	12.50
Colorona® Magenta	1.17389 (1)	MICA, CI 77891, CI 75470	5.00
RonaFlair® Boroneige® SF-3	1.17774 (1)	BORON NITRIDE	5.00
Parteck® LUB Talc	1.08070 (1)	TALC	42.80
Parteck® LUB MST	1.00663 (1)	MAGNESIUM STEARATE	2.05
Maisita Natural 9083	(2)	ZEA MAYS	3.05

B Oxyhex® ST Liquid	1.30217 (1)	DIETHYLHEXYL SYRINGYLIDENE MALONATE, CAPRYLIC/CAPRIC TRIGLYCERIDE	0.10
----------------------------	-------------	--	------



Misty Helium

Notes

The blue color of this powder Eyeshadow is based on Colorona® Dark Blue, while Colorona® Magenta and Timiron® Super Violet give a reddish touch to the base. RonaFlair® Boroneige® SF-3 makes the color more pastel-like and gives the formula a powdery soft touch feeling. The addition of Oxyhex® ST Liquid improves the light stability of the carmine coated Colorona® Magenta.

Color Forecast Spring-Summer 2017

2/ Intersidereal Dream: S 17-22 Eyebrow Color „Spotlight“



A Timiron® Supersheen MP-1001	1.17201 (1)	MICA, CI 77891	11.00
Ronastar® Silver	1.17713 (1)	CALCIUM ALUMINUM BOROSILICATE, SILICA, CI 77891, TIN OXIDE	5.00
RonaFlair® White Sapphire	1.17751 (1)	SYNTHETIC SAPPHIRE	3.30
Ronastar® Diamond Black IQ	1.17790 (1)	CI 77499, ALUMINA, SILICA	0.70
RonaCare® Biotin Plus	1.30221 (1)	UREA, DISODIUM PHOSPHATE, BIOTIN, CITRIC ACID	1.00
RonaCare® Allantoin	1.01015 (1)	ALLANTOIN	0.20
Carbopol® Ultrez10	(2)	CARBOMER	0.30
Water, demineralized		AQUA	32.30



Lunar Grey

Notes: This metallic silvery Eyebrow Color is created by a mixture of RonaFlair® White Sapphire, Timiron® Supersheen MP-1001, Ronastar® Silver and Ronastar® Diamond Black IQ. RonaFlair® White Sapphire supports a good spreading and a pleasant skin feeling. RonaCare® Biotin Plus offers options to enhance the quality of the brows. This trendy product can be applied with the brush or with the finger tips. Try also new application fields like the lower earlobe to be in style!

Color Forecast Spring-Summer 2017

2/ Intersidereal Dream: S 17-23 Caring Lip balm „Galactica“



A	Colorona® Tangerine Orange	1.17089 (1)	MICA, CI 77491, CI 77891	4.00
	Colorona® Bordeaux	1.17405 (1)	CI 77491, MICA	0.50
B	Eusolex® 2292	1.05382 (1)	ETHYLHEXYL METHOXYCINNAMATE, BHT	4.00
	Eusolex® 4360	1.05376 (1)	BENZOPHENONE-3	2.00
	RonaCare® AP	1.30163 (1)	BIS-ETHYLHEXYL HYDROXYDIMETHOXY BENZYL MALONATE	0.40
	RonaCare® Bisabolol	1.30170 (1)	BISABOLOL	0.40
	Oxyhex® K liquid	1.08324 (1)	PEG-8, TOCOPHEROL, ASCORBYL PALMITATE, ASCORBIC ACID, CITRIC ACID	0.05

Galactic Terracotta



Notes

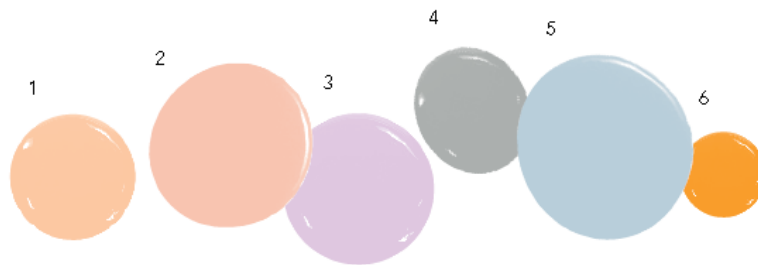
A combination of Colorona® Tangerine Orange and Colorona® Bordeaux results in this strong terracotta color shade. Because of the low pigment concentration, the Lipbalm is very transparent and gives just a touch of color to the lips. The combination of UV-A/B filter Eusolex® 4360 and UV-B filter Eusolex® 2292 provides a good sun protection for the skin. RonaCare® AP generates antioxidant power by combining stable activity with active stability while it provides sebum control and efficient prevention of impure skin. RonaCare® Bisabolol acts as a soothing agent from natural source and Oxyhex® K liquid as an antioxidant for oils with low Tocopherol content.

Color Forecast Spring-Summer 2017

2/ Intersidereal Dream: Look 2 – Techno Sensitive



COMPLEXION **50%** 
 LIPS **30%** 
 NAILS **10%** 
 EYES **10%** 



- 1 Diaphaneous Beige
- 2 Powder Plum
- 3 Delicate Parma
- 4 Glacier Blue
- 5 Celadon Breeze
- 6 Sunny Orange

A soft elegant base of romantic neutrals joined by tender, fresh pastels. This refined diaphaneous range is perturbed by a luminous orange, comet among timeless ethereteal tones.



Color Forecast Spring-Summer 2017

2/ Intersidereal Dream: Pigment blend S 17-2


Celadon Breeze



S 17-2 Techno Sensitive

1.17476	Timiron® Splendid Blue	60 %
1.17201	Timiron® Supersheen MP-1001	30 %
1.17324	Colorona® Dark Blue	10 %

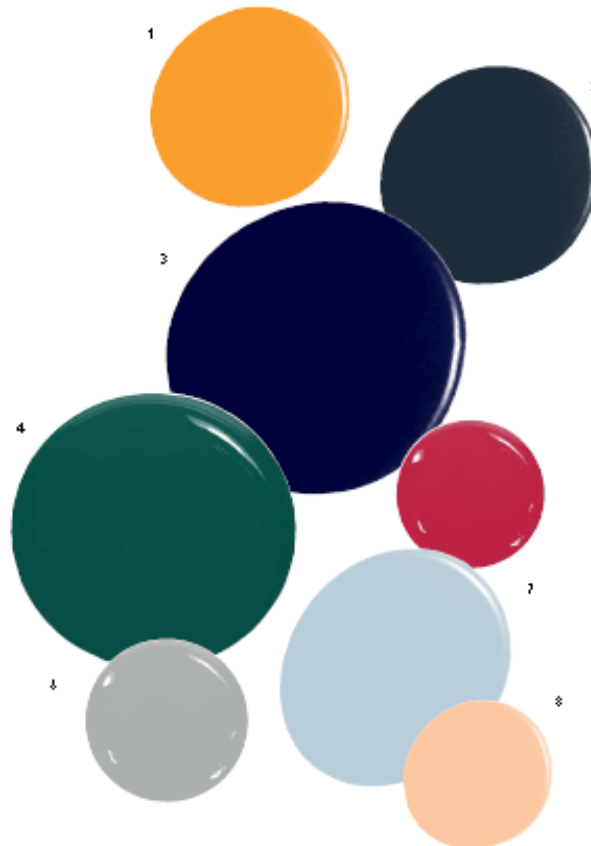
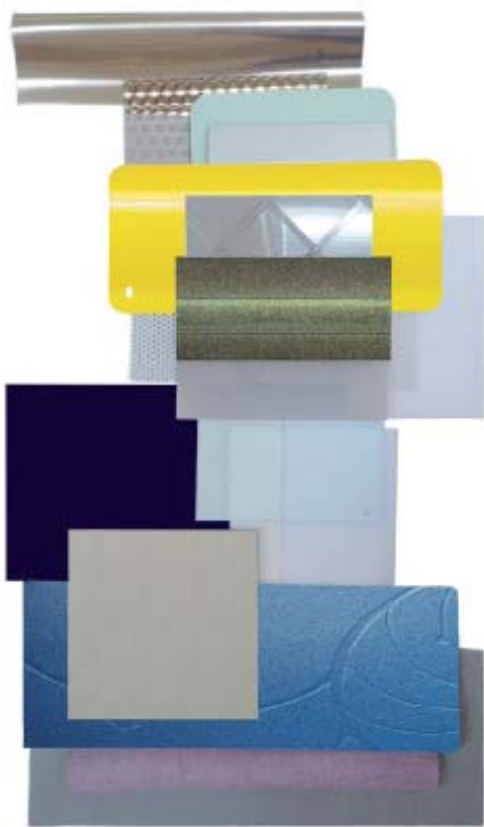




02 packaging
inspiration
intersidereal
DREAM

MERCK

Color Forecast Spring-Summer 2017 Packaging Inspirations



Link to season's
main color range:
beauty oriented,
but also valid for
lifestyle, design &
fashion sectors

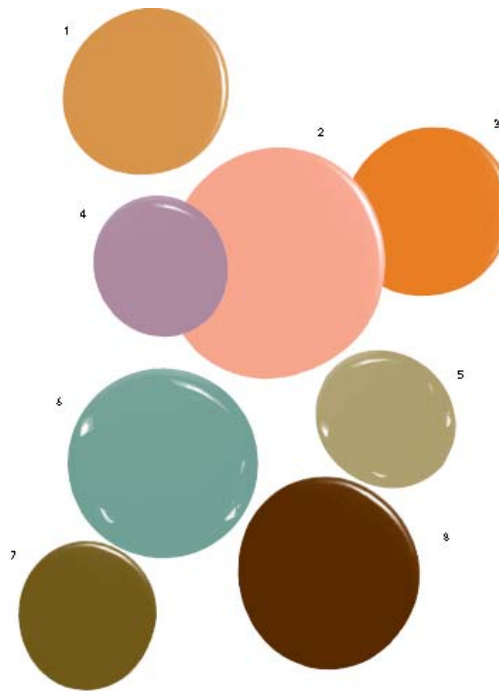


03 HEROIC HORIZON

MERCK

Color Forecast Spring-Summer 2017

3/ Heroic Horizon



Main Color Range

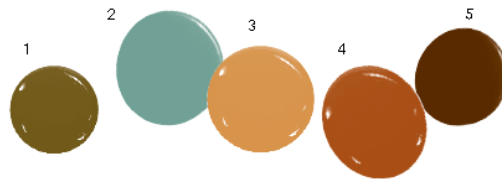
- | | |
|-------------------|-----------------|
| 1 Pioneer beige | 5 Khaki Clay |
| 2 Sandy pink | 6 Slate blue |
| 3 Orangey Ochre | 7 Argil |
| 4 Manganèse Parma | 8 Caravan brown |

TRADITION

WILD
NOMAD
PIONEER
FAR AWAY
PROMISED LAND

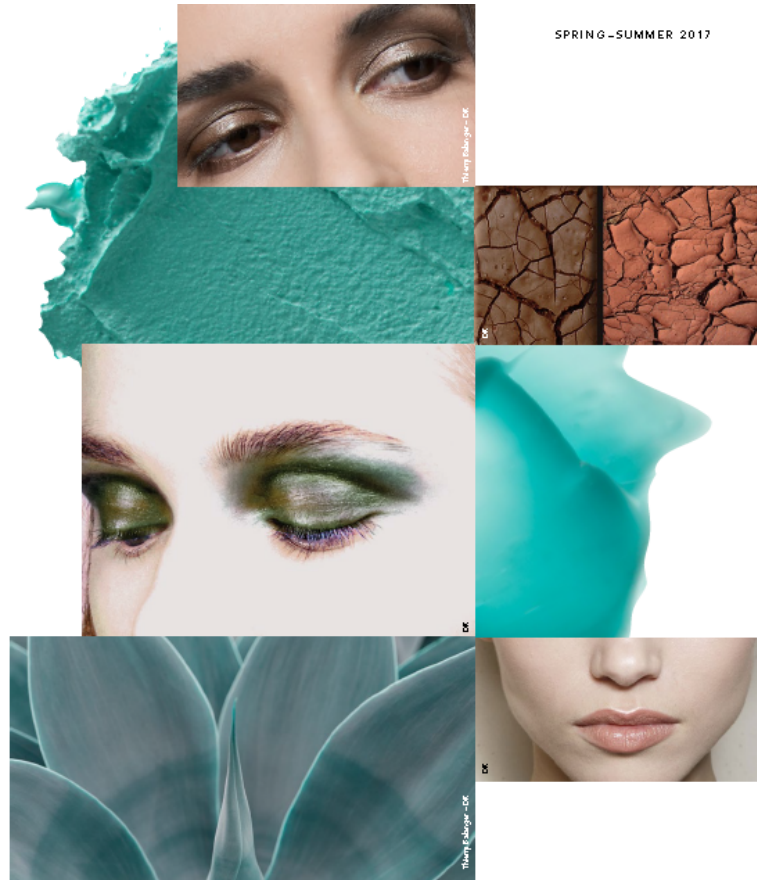
Color Forecast Spring-Summer 2017

3/ Heroic Horizon: Look 1 – Into the Wild



- 1 Camouflage Khaki
- 2 Verdigris Foliage
- 3 Savanna Land
- 4 Scorched Earth
- 5 Baobab Bark

References to earthy pigments and tones in this dry, powdery range where shades come together in harmony. A geological trek. Tones to combine with an equally dry vegetal base evoking the military camouflage of pioneer adventurers, and illuminated by an essential warm, coppery accent.



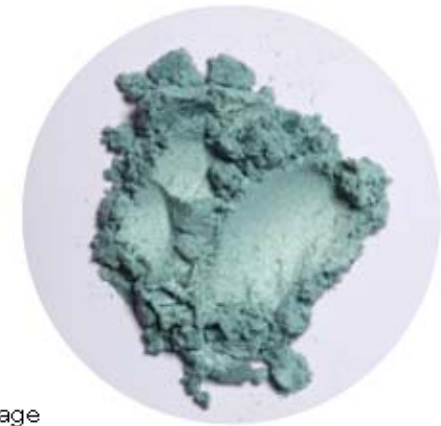
SPRING-SUMMER 2017

Color Forecast Spring-Summer 2017

3/ Heroic Horizon: Pigment blend S 17-3

S 17-3 Into the Wild

1.17499	Xirona® Golden Sky	60 %
1.17190	Colorona® Majestic Green	32 %
1.17324	Colorona® Dark Blue	8 %

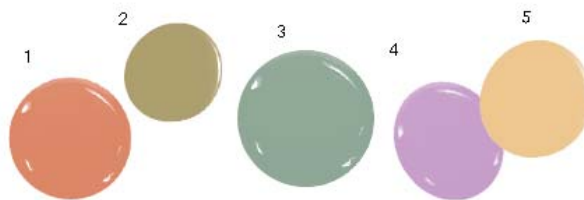
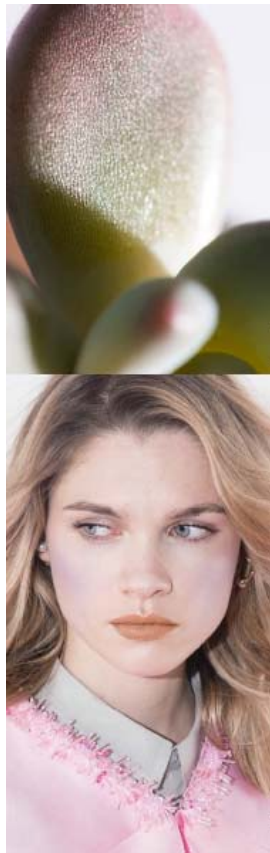


Verdigris Foliage



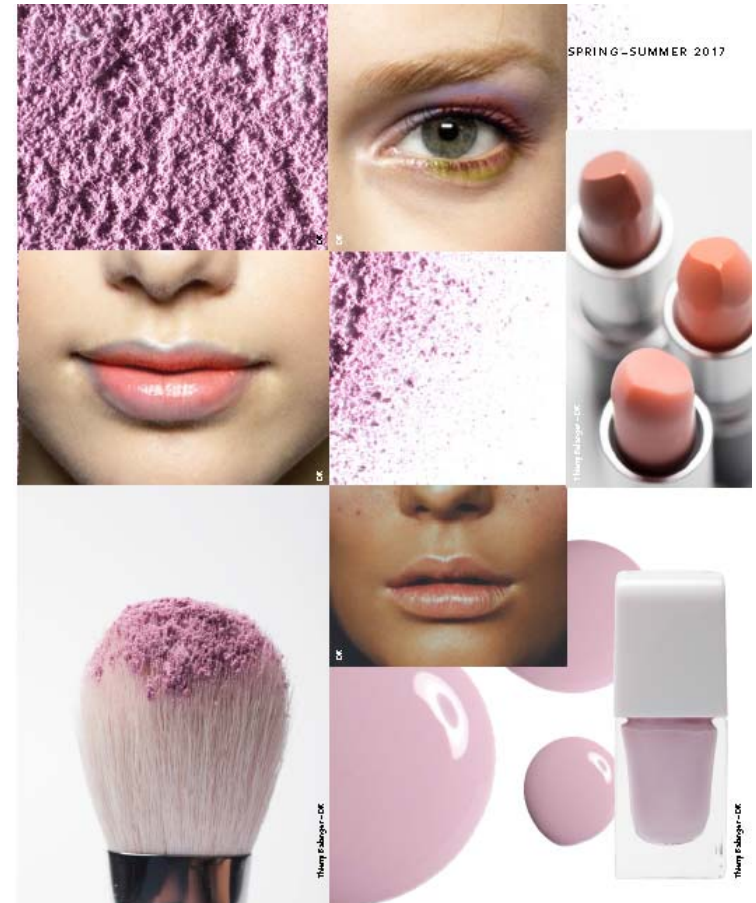
Color Forecast Spring-Summer 2017

3/ Heroic Horizon: Look 2 – Soft Botanic



- 1 Orange Sap
- 2 Aloe Vera
- 3 Yucca Green
- 4 Succulent Parma
- 5 Neutral Pistil

Light shades of greens and parma share the spotlight to create a natural, flora base. A duo of delightfully powdery, delicate orangey and beige. Tendre patinated neutrality blended with luminous, very romantic florals.



Color Forecast Spring-Summer 2017

3/ Heroic Horizon: S 17-31 Lipstick „Timeless Elegance“

A	Timiron® Super Copper	1.17358 (1)	MICA, CI 77891, TIN OXIDE	10.00
	Timiron® Starluster MP-115	1.17200 (1)	MICA, CI 77891	2.40
	Colorona® Bordeaux	1.17405 (1)	CI 77491, MICA	2.00
	Colorona® Red Gold	1.17320 (1)	MICA, CI 77891, CI 77491	0.60
B	Oxynex® K liquid	1.08324 (1)	PEG-8, TOCOPHEROL, ASCORBYL PALMITATE, ASCORBIC ACID, CITRIC ACID	0.05
	Sensiva® PA20	(2)	PHENETHYL ALCOHOL, ETHYLHEXYL GLYCERIN	1.00
	Paraffin viscous	1.07160 (1)	PARAFFINUM LIQUIDUM	2.10

Notes

Responsible for this timeless light terracotta color is a mixture of a number of pearlescent pigments without any additional color dispersion. Colorona® Bordeaux, Colorona® Red Gold and Timiron® Splendid Copper are building the color base of this shade, while Timiron® Starluster MP-115 is lightening up the color. The result is a very elegant golden coppery shade.

Orangey Sap



Color Forecast Spring-Summer 2017

3/ Heroic Horizon: S 17-32 Blush „Romantic Touch“

A	Colorona® Magenta	1.17389 (1)	MICA, CI 77891, CI 75470	12.50
	Timiron® Super Violet	1.17359 (1)	CI 77891, MICA, TIN OXIDE	2.50
	RonaFlair® White Sapphire	1.17751 (1)	SYNTHETIC SAPPHIRE	12.50
	Parteck® LUB Talc	1.08070 (1)	TALC	59.90
	Parteck® LUB MST	1.00663 (1)	MAGNESIUM STEARATE	2.85
	Maisita Natural 9083	(2)	ZEA MAYS	4.25
B	Oxynex® ST Liquid	1.30217 (1)	DIETHYLHEXYL SYRINGYLIDENE MALONATE, CAPRYLIC/ CAPRIC TRIGLYCERIDE	0.10

Notes

For this pinkish-mauve pastel colored Blush a combination of Colorona® Magenta and Timiron® Super Violet is used. RonaFlair® White Sapphire gives a velvety touch to the texture. Apply it on the cheeks - just with the finger tips or a brush for a fresh new look.

Succulent Parma



Color Forecast Spring-Summer 2017

3/ Heroic Horizon: S 17-33 Nail Polish „Magic Mystery“

Xirona® Nordic Sunset	1.17112 (1)	SILICA, CI 77891, TIN OXIDE	3.00
RonaFlair® White Sapphire	1.17751 (1)	SYNTHETIC SAPPHIRE	1.00
Colorona® Mica Black	1.17260 (1)	CI 77499, MICA, CI 77891	0.06
Red 8664	(2)	ETHYL ACETATE, BUTYL ACETATE, NITROCELLULOSE, PHTHALIC ANHYDRIDE/TRIMELLITIC ANHYDRIDE/GLYCOLS COPOLYMER, CI 15880, ACETYL TRIBUTYL CITRATE, ISOPROPYL ALCOHOL, ACRYLATES COPOLYMER	0.03
Nail lacquer Base 12897	(2)	ETHYL ACETATE, BUTYL ACETATE, NITROCELLULOSE, PHTHALIC ANHYDRIDE/TRIMELLITIC ANHYDRIDE/GLYCOLS COPOLYMER, ACETYL TRIBUTYL CITRATE, ISOPROPYL ALCOHOL, STEARALKONIUM HECTORITE, ADIPIC ACID/ NEOPENTYL GLYCOL/TRIMELLITIC ANHYDRIDE COPOLYMER	95.91

Notes

This Nail Polish with its color travel effect is definitely an eye-catcher. Xirona® Nordic Sunset - green/red/gold color travel pigment - is supported by a hint of Colorona® Mica Black and a red color dispersion as background color. RonaFlair® White Sapphire adds a subtle white effect and supports the luster.

Succulent Parma

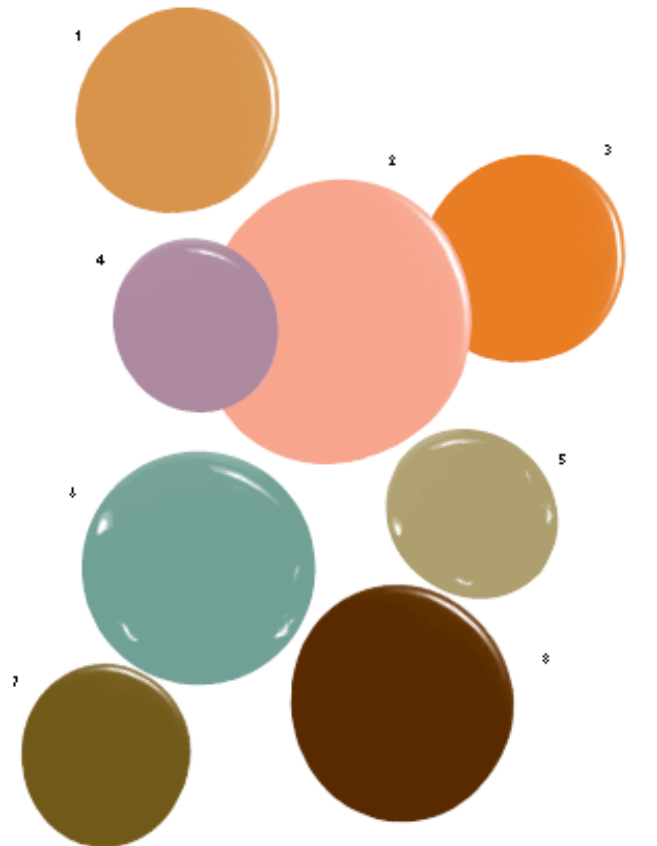




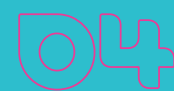
03 packaging
inspiration
HEROIC HORIZON

MERCK

Color Forecast Spring-Summer 2017 Packaging Inspirations



Link to season's main color range: beauty oriented, but also valid for lifestyle, design & fashion sectors

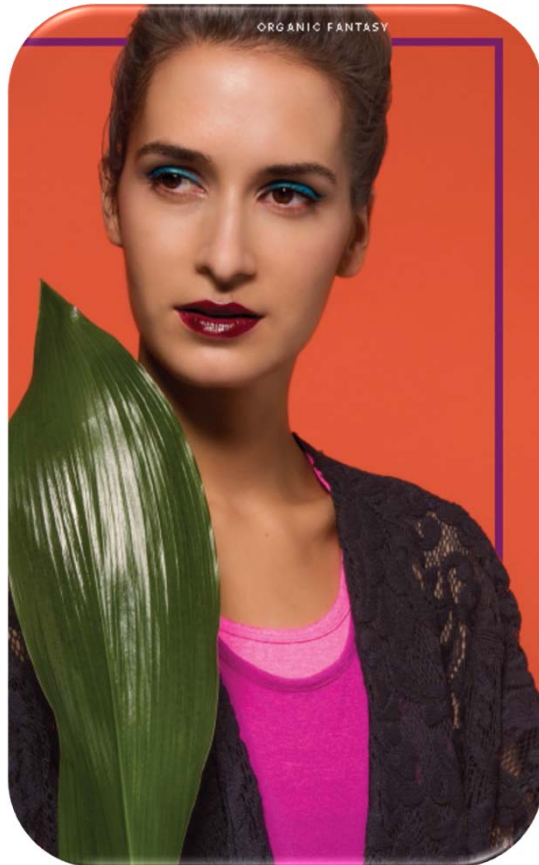


organic fantasy

Merck

Color Forecast Spring-Summer 2017

4/ Organic Fantasy



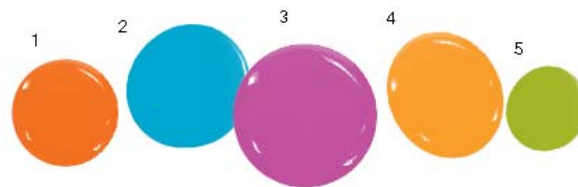
Main Color Range

- | | |
|--------------------|---------------------|
| 1 Anthurium Orange | 5 Nepenthes Crimson |
| 2 Sugar Cane | 6 Pau Brasil |
| 3 Fuschia Orchid | 7 Lacquered Palm |
| 4 Hevea Milk | 8 Imperial Blue |



Color Forecast Spring-Summer 2017

4/ Organic Fantasy: Look 1 - Bird of Paradise



- 1 Orangey Feathers
- 2 Deep Turquoise
- 3 Lacquered Pourpre
- 4 Vibrant Yellow
- 5 Exotic Weaves

A tropical ambiance emanates from this palette based on acidic vegetal notes that renew the ever-successful turquoise. Around this iconic, best-selling shade, orangey, pourpre tints and sunny blossomed colors architect the ensemble.



Color Forecast Spring-Summer 2017

4/ Organic Fantasy: S 17-41 Eyeshadow „Tropical Orange“



Orangey Feathers



A Colorona® Bright Gold	1.17321	(1)	MICA, CI 77891, CI 77491	12.00
Colorona® Tangerine Orange	1.17089	(1)	MICA, CI 77491, CI 77891	9.00
Colorona® Imperial Citrine	1.17762	(1)	MICA, CI 77163, CI 77492	9.00
Parteck® LUB Talc	1.08070	(1)	TALC	59.00
Parteck® LUB MST	1.00663	(1)	MAGNESIUM STEARATE	2.80
Maisita Natural 9083		(2)	ZEA MAYS	4.20

Notes

The warm orange shade of this Eyeshadow is created by a mixture of Colorona® Tangerine Orange and Colorona® Imperial Citrine. Colorona® Bright Gold brightens up the shade and gives a slightly golden touch to the powder - a perfect shade for a golden summer!

Color Forecast Spring-Summer 2017

4/ Organic Fantasy: S 17-42 Eyeshadow „Pink Paradise“



A Colorona® SynBerry Pink	1.17782 (1)	SYNTHETIC FLUORPHLOGOPITE, CI 77891, CI 75470, TIN OXIDE	30.00
Colorona® RB	1.17191 (1)	MICA, CI 77891, CI 75470	5.00
Parteck® LUB Talc	1.08070 (1)	TALC	51.20
RonaFlair® White Sapphire	1.17751 (1)	SYNTHETIC SAPPHIRE	1.50
Parteck® LUB MST	1.00663 (1)	MAGNESIUM STEARATE	2.40
Maisita Natural 9083	(2)	ZEA MAYS	3.65
B Oxyhex® ST Liquid	1.30217 (1)	DIETHYLHEXYL SYRINGYLIDENE MALONATE, CAPRYLIC/CAPRIC TRIGLYCERIDE	0.10

Lacquered Pourpre



Notes

This pink color shade is based on Colorona® SynBerry Pink with the addition of Colorona® RB, moving the tone towards more bluish. RonaFlair® White Sapphire improves the texture. Applying the Eyeshadow with a wet sponge intensifies the color even more. The addition of Oxyhex® ST Liquid improves the light stability of both carmine coated Colorona® pigments.

Color Forecast Spring-Summer 2017

4/ Organic Fantasy: S 17-43 Liquid Eyeliner „Turquoise Thunder“



A	Ronastar® Aqua Sparks	1.17076	(1)	CALCIUM ALUMINUM BOROSILICATE, CI 77891, SILICA, TIN OXIDE	7.00
	Timiron® Splendid Green	1.17477	(1)	CI 77891, MICA, SILICA	4.40
	Colorona® Mica Black	1.17260	(1)	CI 77499, MICA, CI 77891	0.60
	Unipure Blue LC 686		(2)	CI 77007	2.50
	Keltrol® CG-SFT		(3)	XANTHAN GUM	0.80
	Water, demineralized			AQUA	60.20
B	1,2-Propanediol	1.07478	(1)	PROPYLENE GLYCOL	2.00
	Dehydol LS 3 Deo		(4)	LAURETH-3	1.00

Deep Turquoise



Notes:

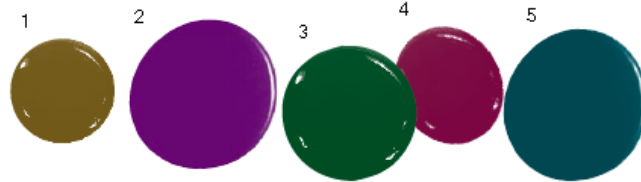
The exotic turquoise color of the Liquid Eyeliner can be achieved by the use of Ronastar® Aqua Sparks, Timiron® Splendid Green, Colorona® Mica Black and an additional color dispersion Unipure Blue LC 686. The formulation itself leaves a comfortable smudge-proof film on skin and allows to play with new graphic designs. A real eye-catcher for hot summerlooks!

Color Forecast Spring-Summer 2017

4/ Organic Fantasy: Look 2 – Night Jungle



EYES 50% 
 CHEEKS 30% 
 LIPS 20% 



- 1 Philodendron Green
- 2 Crimson Padouk
- 3 Tall Grass
- 4 Bougainvillea Violet
- 5 Poisonous Flower

The captivating mystery of floral and vegetal exotic notes consorts with vibrant, sophisticated purple. Evocations a tropical jungle with urban connotations. Deep warm and cool tones, ideal for summer dreaming of exoticism and Elsewhere.



Color Forecast Spring-Summer 2017

4/ Organic Fantasy: Pigment blend S 17-4




S 17-4 Night Jungle

1.17790	Ronastar® Diamond Black IQ	60 %
1.17782	Colorona® SynBerry Pink	30 %
1.17075	Ronastar® Purple Sparks	10 %

Crimson Padouk



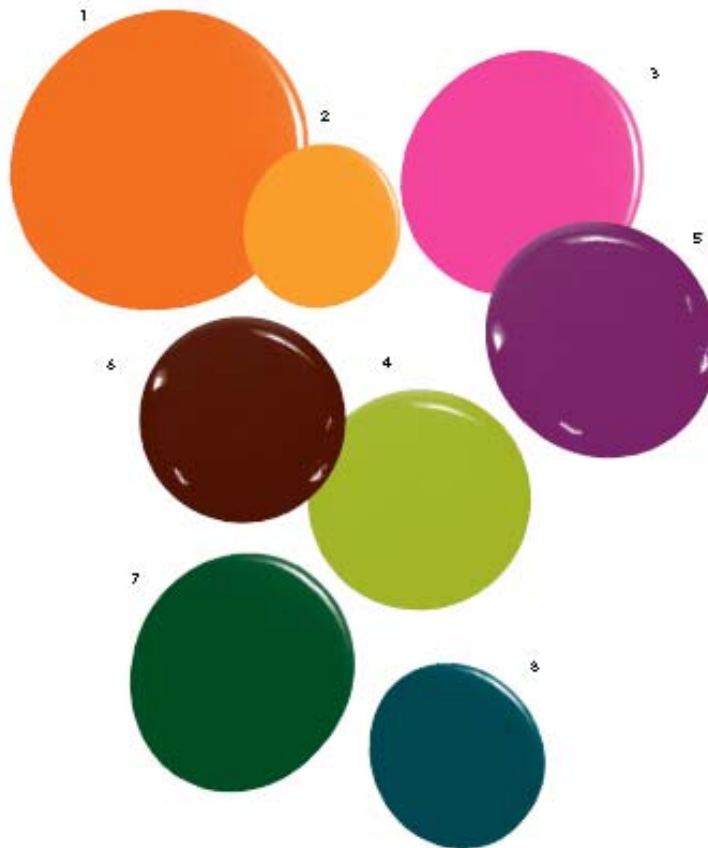


04

**packaging
inspiration
organic
fantasy**

Merck

Color Forecast Spring-Summer 2017 Packaging Inspirations



Link to season's
main color range:
beauty oriented,
but also valid for
lifestyle, design &
fashion sectors

Color Forecast Spring-Summer 2017

Color overview

PASTELS

Pastels are fresh but almost dusty. An invitation to play with gradations and subtles tones.



- 1 Yoga Blue
- 2 Balcony Green
- 3 Cheeky Pink
- 4 Succulent Parma
- 5 Powder Plum

NEO GREYS

A neutral base capitalizing on greyish variations from the brightest to the deepest. Fake blacks and anthracites with a blueish sparkle.



- 1 Soft Grey
- 2 Lunar Grey
- 3 Lunar Asteroid
- 4 Asphalt Touch
- 5 Sparkling Facets

EARTHY TONES

Go green beiges, khaki and bright yellows. In a dry mood, browns and terracotta for a wild environment.



- 1 Verdigris Foliage
- 2 Exotic Weaves
- 3 Philodendron Green
- 4 Savanna Land
- 5 Baobab Bark

SUMMER DARKS

A deep range of exotic green, purple and strong bordeaux. Bold colors for a vivid summer.



- 1 Tall Grass
- 2 Poisonous Flower
- 3 Gourmand Lips
- 4 Crimson Padouk
- 5 Bougainvillea Violet

SUMMER BRIGHTS

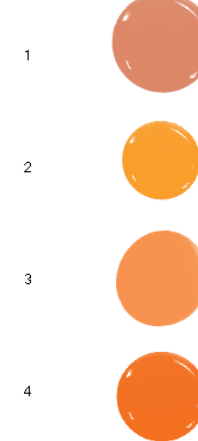
Light and vivid tones, rather cold. A primary range of simple colors awaken by dynamic accents.



- 1 Vibrant Yellow
- 2 Exotic Weaves
- 3 Deep Turquoise
- 4 Essential Blue
- 5 Lacquered Pourpre

ORANGE POWER

Focus on orange gradations this season. Terracotta balm, mandarin and energetic neon.



- 1 Orangey Sap
- 2 Sunny Orange
- 3 Sweet Orangeade
- 4 Orangey Feathers

Color Forecast Spring-Summer 2017

YOUR SKIN – YOUR COLOR



VERY FAIR

A soft look in a neo-nude spirit. Eyes slightly outlined with pale tones. Soft lips, natural and pinkish, parma for a party look. **Reference Color Look Story: Intersidereal Dream/Techno Sensitive**



FAIR

Gradation of blacks to sublimate the eyes. Fresh and vitamin colors for lips and cheeks. An icy red for a night time look. **Reference Color Look Story: Plug & Play/Move up!**



MEDIUM

A sophisticated and refined look. Soft khaki for the eyes. Nails and cheeks are enhanced with a dash of parmapink. A terracotta balm for the lips. **Reference Color Look Story: Heroic Horizon/Soft Botanic**



DARK

A colorful and expressive look. Fushia, yellows or turquoise pigments for the eyes. Softer lips with orangey tones. Colors are contrasted. **Reference Color Look Story: Organic Fantasy/Bird of Paradise**



VERY DARK

Dark shades of summer for a sexy look. A purplish eye. A deep Bordeaux on lacquered lips. **Reference Color Look Story: Organic Fantasy/Night Jungle**



YELLOW UNDERTONES

A natural but wild atmosphere. Jade green or deep khaki for a new smoky eye. Cheeks and lips on a terra cotta mood. **Reference Color Look Story: Heroic Horizon/Into the Wild**



EYES + NAILS
Lunar Grey Caladon Breeze

LIPS + NAILS
Powder Plum



BLUSH + NAILS
Delicate Parma



EYES
Sparkling Facets

LIPS + NAILS + CHEEKS
Malabar Bubble



LIPS + NAILS
Sweet Orangeade



LIPS + NAILS
Gourmand Lips



EYES
Aloe Vera Yucca Green

LIPS + NAILS + CHEEKS
Succulent Parma



LIPS
Orangey Sap



EYES + LIPS + NAILS
Orangey Feathers Laquered Pourpre

EYES
Exotic Weaves



EYES
Deep Turquoise



CHEEKS
Scorched Earth



EYES + NAILS
Sugar Cane

EYES + NAILS
Dreamy Azur



LIPS + CHEEKS
Bougainvillea Violet



LIPS + CHEEKS
Galactic Terracotta



EYES + NAILS
Camouflage Khaki Verdigris Foliage

EYES
Baobab Bark



LIPS + NAILS + CHEEKS
Scorched Earth





05 packaging
inspiration
CFC BOX

MERCK

Color Forecast Spring-Summer 2017 Packaging inspiration

Refinement

The slipcase is refined with VE3D effect and represents **THE KEY COLOR** of the season for lifestyle



The box is refined with elegant silver-white pearl effect



Color Forecast Spring-Summer 2017

Packaging inspiration

Refinement

The inner lining is refined with VE3D effect



Color Forecast Spring-Summer 2017

Packaging inspiration

Component	Refinement	Details
Trend book	none	Printed by Trend Agency
Sample slipcase	VE3D, using Iriodin® 6123 Icy White Satin	Printed by Günter Thomas (Germany)
Sample box	Fedrigoni Sirio Pearl Ice White 125 g/m ²	Printed by Fedrigoni
Sample box (inner lining)	VE3D, using Iriodin® 6123 Icy White Satin	Printed by Cardbox Packaging (Austria)
Packaging	None in this edition (planned for next editions)	Evaluation of suitable plastic components of cosmetic packs (jars, containers etc.). To be included in the upcoming editions.

Color Forecast Spring-Summer 2017

DISCLAIMER

We provide information and advice on application technologies and relevant regulations based upon our current knowledge and opinion. WE MAKE NO REPRESENTATION OR WARRANTY OF ANY KIND, EXPRESS OR IMPLIED, INCLUDING MERCHANTABILITY OR FITNESS FOR A PARTICULAR USE, WITH RESPECT TO SUCH INFORMATION OR ITS APPLICATION. Customers must independently determine the suitability of our products for the customer's intended product, use or process. Customer is responsible for observing all laws and regulations relevant to such products, uses or processes. The foregoing information and suggestions are also provided without warranty of non-infringement as to intellectual property rights of third parties and shall not be construed as any inducement to infringe the rights of third parties. Customer shall be responsible for obtaining any applicable third party intellectual property licenses. Any reference from our literature requires prior written consent and in any reference the source shall be stated. Merck, the Merck-Logo, Colorona, Timiron Xirona, RonaFlair, Ronastar, Candurin, Eusolex, Parteck, Oxynex, RonaCare, IR3535, UV-Pearls, ASCIII, Luremin and Emblica are registered trademarks of Merck KGaA, Darmstadt, Germany. BORONEIGE is a trademark of 3M Technical Ceramics GmbH & Co. KG, Kempten, Germany. All other trademarks belong to third parties and are used merely to indicate the composition or other characteristics of the products.

Products are warranted to meet the specifications set forth on their label/packaging and/or certificate of analysis at the time of shipment or for the expressly stated duration. MERCK MAKES NO REPRESENTATION OR WARRANTY OF ANY KIND, EXPRESS OR IMPLIED, INCLUDING MERCHANTABILITY OR FITNESS FOR A PARTICULAR USE REGARDING OUR PRODUCTS OR ANY INFORMATION PROVIDED IN CONNECTION THEREWITH. Merck shall not in any event be liable for incidental; consequential; indirect; exemplary or special damages of any kind resulting from any use or failure of the products: All sales are subject to Merck's complete Terms and Conditions of Sale. Prices are subject to change without notice. Merck reserves the right to discontinue products without prior notice.