

ORIGINAL RESEARCH

Dose-dependent increases in p70S6K phosphorylation and intramuscular branched-chain amino acids in older men following resistance exercise and protein intake

Randall F. D'Souza¹, James F. Markworth¹, Vandre C. Figueiredo¹, Paul A. Della Gatta², Aaron C. Petersen³, Cameron J. Mitchell¹ & David Cameron-Smith¹

¹ Liggins Institute, University of Auckland, Auckland, New Zealand

² Centre for Physical Activity and Nutrition, School of Exercise and Nutrition Sciences, Deakin University, Victoria, Australia

³ Institute of Sport, Exercise and Active Living (ISEAL), Victoria University, Melbourne, Victoria, Australia

Keywords

Leucine, mammalian target of rapamycin, mass spectrometry, muscle mass, protein synthesis, sarcopenia.

Correspondence

David Cameron-Smith, Faculty of Medical and Science Health, The Liggins Institute, University of Auckland, 85 Park Road, Grafton, Private Bag 92019, Auckland 1023, New Zealand.

Tel: +64 (0) 9 923 1336

Fax: (+64 9) 373 7039

E-mail: d.cameron-smith@auckland.ac.nz

Funding Information

The authors gratefully acknowledge funding from The National Dairy Council/DMI (Australia), Deakin University and the Liggins Institute.

Received: 28 May 2014; Revised: 14 July 2014; Accepted: 16 July 2014

doi: 10.14814/phy2.12112

Physiol Rep, 2 (8), 2014, e12112,

doi: 10.14814/phy2.12112

Abstract

Resistance exercise and whey protein supplementation are effective strategies to activate muscle cell anabolic signaling and ultimately promote increases in muscle mass and strength. In the current study, 46 healthy older men aged 60–75 (69.0 ± 0.55 years, 85.9 ± 1.8 kg, 176.8 ± 1.0 cm) performed a single bout of unaccustomed lower body resistance exercise immediately followed by ingestion of a noncaloric placebo beverage or supplement containing 10, 20, 30, or 40 g of whey protein concentrate (WPC). Intramuscular amino acid levels in muscle biopsy samples were measured by Gas Chromatography–Mass Spectrometry (GC-MS) at baseline (before exercise and WPC supplementation) plus at 2 h and 4 h post exercise. Additionally, the extent of p70S6K phosphorylation at Thr389 in muscle biopsy homogenates was assessed by western blot. Resistance exercise alone reduced intramuscular branch chain amino acid (BCAA; leucine, isoleucine, and valine) content. Supplementation with increasing doses of whey protein prevented this fall in muscle BCAAs during postexercise recovery and larger doses (30 g and 40 g) significantly augmented postexercise muscle BCAA content above that observed following placebo ingestion. Additionally, the fold change in the phosphorylation of p70S6K (Thr389) at 2 h post exercise was correlated with the dose of whey protein consumed ($r = 0.51$, $P < 0.01$) and was found to be significantly correlated with intramuscular leucine content ($r = 0.32$, $P = 0.026$). Intramuscular BCAAs, and leucine in particular, appear to be important regulators of anabolic signaling in aged human muscle during postexercise recovery via reversal of exercise-induced declines in intramuscular BCAAs.

Introduction

Skeletal muscle mass is tightly regulated by the balance between rates of muscle protein synthesis (MPS) and muscle protein breakdown (MPB). Increases in MPS induced by both resistance exercise and protein feeding are thought to be mediated primarily through the mammalian target of rapamycin (mTOR) pathway. p70S6

kinase (p70S6K) is a major downstream component of the mTOR pathway which is responsible for the initiation of protein translation and is thus often used as a proxy measure for MPS (Drummond et al. 2009). Amino acids (AAs), and leucine in particular, have been proposed to be the primary nutritional regulators of the mTOR signaling pathway culminating in increases in MPS (Smith et al. 1992; Atherton et al. 2010). MPS appears to be much

more tightly regulated when compared to MPB, and for this reason, MPS and associated anabolic signaling often serve as the primary measures in relation to the influence of protein feeding and resistance exercise on muscle protein turnover (Glynn et al. 2010). In many cases, acute p70S6K phosphorylation correlates with long-term changes in muscle size (Baar and Esser 1999; Terzis et al. 2008; Mayhew et al. 2009; Mitchell et al. 2013). However, there are also reports of a lack of correlation between acute MPS or p70S6K and hypertrophy responses within the same subject, suggesting that additional mechanisms may be involved (Mitchell et al. 2012, 2014). Nevertheless, multiple studies which have tested the acute (MPS and p70S6K phosphorylation) and chronic (hypertrophic) effects of the same exercise or nutritional manipulation in different subjects do tend to show very similar patterns of group changes (Hartman et al. 2007; Wilkinson et al. 2007; West et al. 2009a,b; Burd et al. 2010a,b; Mitchell et al. 2012, 2013).

The ingestion of graded amounts of high-quality protein such as whey after resistance exercise has been shown to increase MPS in a dose-dependent manner. In young men (20–30 years), there appears to be a ceiling above which no further augmentation of MPS occurs in response to protein ingestion. For example, a plateau in MPS occurs following ingestion of 20 g of either egg (Moore et al. 2009) or whey (Witard et al. 2014) protein in young male subjects, with no greater MPS response observed in response to surplus ingestion of 40 g protein. However, multiple studies have shown that older adults (>60 years) exhibit a lower anabolic signaling and MPS response to protein feeding, resistance exercise, and the combination of feeding and exercise when compared to young men (Cuthbertson et al. 2005; Fry et al. 2011; Burd et al. 2013). This phenomenon termed “anabolic resistance” is exemplified by a recent study by Yang et al. (2012b) which showed that MPS in older men following resistance exercise increased to a greater extent after the ingestion of 40 g of whey protein when compared to the response elicited by 20 g whey protein (Yang et al. 2012b). Nevertheless, the magnitude of the MPS response to feeding 40 g of protein was slightly less in older men than that which was observed in young men who were fed a maximally effective 20 g dose of protein (Yang et al. 2012a; Churchward-Venne et al. 2013b). It appears that deficits in feeding-induced p70S6K phosphorylation may at least partially underpin anabolic resistance in aged skeletal muscle (Cuthbertson et al. 2005). Much less is known about the effect of graded whey protein ingestion on p70S6K phosphorylation in older human subjects, which is the putative mechanism underlying nutrient-induced increase in MPS.

It is well established that ingestion of amino acids (AA) or intact protein leads to dose-dependent increases in

circulating plasma essential amino acids (EAAs; Bohe et al. 2003; Moore et al. 2009; Yang et al. 2012b; Witard et al. 2014). On the other hand, much less is known about the effect of resistance exercise and protein feeding on the concentrations of AAs within the muscle tissue itself. A classic study by Bohé et al. showed a stronger relationship between plasma EAAs and MPS when compared to intramuscular EAA concentrations (Bohe et al. 2003). However, the concentrations of the individual EAAs were not reported independently in this study (Bohe et al. 2003). The authors hypothesized that MPS was primarily regulated by extracellular rather than intracellular EAA availability. However, it has since been demonstrated that among the EAAs, leucine one of the three Branched-Chain Amino Acids (BCAAs), appears to be the primary trigger of amino acid-induced anabolic signaling and MPS (Atherton et al. 2010). Moreover, recent mechanistic work suggests that the activation of mTOR in response to leucine is sensed through intracellular proteins such as the leucyl-tRNA synthetase (Han et al. 2012) and/or the regulator (Zoncu et al. 2011). Consistently, recent work has also suggested that the pattern of change in BCAAs in response to resistance exercise and protein feeding may be different when compared with the other EAAs (Drummond et al. 2010, 2011; Churchward-Venne et al. 2012, 2014).

The purpose of the present study was to characterize the changes in intramuscular levels of EAAs and BCAAs in response to resistance exercise and graded ingestion of whey protein in older men. A secondary aim was to determine the effects of graded intakes of whey protein on the extent of exercise-induced phosphorylation of p70S6K at Thr389 as a marker of mTOR pathway activation in the muscle of older men and to examine the relationship between intramuscular EAA/branch chain amino acid (BCAA) levels and growth signal transduction via the mTOR pathway.

Methods

Subjects and ethical approval

Forty six healthy elderly untrained men (60–75 years of age) volunteered to participate in this study, subject characteristics are reported in Table 1. Individuals participating in any regular resistance exercise training program (two or more days per week) and/or with preexisting metabolic or cardiovascular diseases were excluded. Individuals who engaged in aerobic exercise up to three times per week and/or were taking anticoagulation or antihypertensive medication were not excluded from participation, however, those on aspirin/fish oil supplements were requested to abstain from these medications throughout the experimental trial. Prior to any experimental procedures, subjects were

Table 1. Subject characteristics. Means \pm SD.

	Placebo	10 g Whey	20 g Whey	30 g Whey	40 g Whey
<i>n</i>	15	7	7	7	10
Age (years)	67.8 \pm 3.9	71.1 \pm 4.9	69.3 \pm 3.6	70.0 \pm 3.3	68.1 \pm 4.1
Body mass (kg)	89.6 \pm 14.0	82.8 \pm 8.3	90.5 \pm 19.5	79.6 \pm 9.0	84.7 \pm 11.8
Height (m)	1.80 \pm 0.04	1.74 \pm 0.04	1.78 \pm 0.10	1.72 \pm 0.06	1.78 \pm 0.10
BMI (kg/m ²)	27.5 \pm 4.6	27.4 \pm 3.3	28.6 \pm 5.4	27.4 \pm 3.0	26.5 \pm 3.3
1-RM Squat (kg)	84.1 \pm 33.0	59.6 \pm 11.3	81.0 \pm 26.9	67.9 \pm 19.6	90.8 \pm 39.9
1-RM Leg press (kg)	177.7 \pm 73.5	175.9 \pm 28.2	211.9 \pm 111.6	183.4 \pm 32.9	205.4 \pm 66.4
1-RM Leg Ext. (kg)	53.01 \pm 21.9	52.6 \pm 10.6	49.9 \pm 29.9	56.0 \pm 10.2	68.7 \pm 21.1

provided with oral and written information regarding the experimental protocols and potential risks involved and written consent to participate was obtained. Randomization to place immediately after consent was obtained. All experimental procedures employed by this study were carried out in coherence with the Helsinki declaration and were formally approved by the Deakin University Human Research Ethics Committee.

Study design

Approximately 1 week prior to the experimental trial day, participants performed a familiarization session during which one-repetition maximum (1RM) strength testing was also performed to determine the experimental exercise load (80% of 1RM). The maximal weight that subjects could lift for 3–6 repetitions (3–6 RM) on the bilateral barbell squat, leg press, and leg extension exercises was determined and participants 1RM was estimated using the Brzycki equation ($1RM = 100 \times \text{load rep} / (102.78 - 2.78 \times \text{reps completed})$; Reynolds *et al.* 2006). Participants were instructed to abstain from any vigorous physical activity in the week between the familiarization and the experimental trial day. The evening before the trial, participants ingested a standard evening meal (2103 kJ, 54% carbohydrate, 29% fat, 17% protein) before 10 pm and were instructed to eat nothing afterward. The following morning, the subjects arrived at (~7 am) in a fasted state. Participants were randomly allocated into one of five treatment groups; noncaloric placebo ($n = 15$), 10 g whey ($n = 7$), 20 g whey ($n = 7$), 30 g whey ($n = 7$), and 40 g whey ($n = 10$).

Resistance exercise and supplementation trial

Upon arrival at the laboratory, individuals rested in a supine position for ~30 min prior to collection of resting muscle biopsy samples (see below section). Participants then rested supine following collection of resting muscle

biopsy for approximately 10–15 min after which time the exercise protocol commenced. The exercise protocol began with a 10-min warm-up involving light cycling on a bicycle ergometer and a single low load warm-up set for each of the three resistance exercises. Participants then completed three sets of 8–10 repetitions of bilateral barbell smith rack squat, 45° leg press, and seated knee extensions at 80% of their predetermined 1RM. The exercises were performed in a circuit manner with 1 min rest between each exercise and 3 min rest between subsequent sets, the exercise protocol took approximately 20 min to complete. Following completion of the exercise protocol, subjects were immediately provided with a fixed-volume (350 mL) beverage, containing a flavored noncaloric placebo, or one of the four doses of whey protein concentrate (10 g, 20 g, 30 g, or 40 g). Subjects were instructed to ingest the beverage within 2 min and were required to ingest the total volume provided. Following consumption of the supplements, subjects rested in a supine position throughout the 4 h of postexercise recovery with additional muscle biopsy samples collected at 2 and 4 h post exercise.

Muscle biopsies

Muscle biopsies (~100 mg) were collected from the vastus lateralis muscle under local anesthesia (1% Xylocaine) using a Bergstrom needle modification of manual suction. All three biopsies were collected from the same limb starting distally and moving proximally. A gap of at least 2–3 cm between sequential biopsies was maintained in order to avoid any potential confounding effects caused by repeated sampling for the same location. Biopsies were quickly frozen in liquid nitrogen and stored at -80°C until further analyses.

Western blotting

Muscle tissue (~50 mg) was homogenized in ice-cold RIPA lysis buffer (50 mmol/L Tris-HCl, pH 7.4, 150 mmol/L NaCl, 0.25% deoxycholic acid, 1% NP-40,

1 mmol/L EDTA supplemented with a cocktail of protease and phosphatase inhibitors including 1 mmol/L PMSF, 1 $\mu\text{g}/\text{mL}$ aprotinin, 1 $\mu\text{g}/\text{mL}$ leupeptin, 1 mmol/L Na_3VO_4 , and 1 mmol/L NaF). The resulting homogenates were agitated for 1 h at 4°C, centrifuged for 15 min at 13,000 g, and the protein content of the supernatant was determined using a BCA-protein assay kit (Pierce, Rockford, IL) following the manufacturer's instructions. Aliquots of protein homogenate containing 50 μg of total protein were prepared, mixed with Laemmli buffer, boiled, and subjected to SDS/PAGE. Proteins were separated on an 8% gel and wet-transferred to a polyvinylidene difluoride (PVDF) membrane. Following transfer, membranes were blocked in 5% bovine serum albumin (BSA)/Tris Buffer Saline/0.1% Tween 20 (TBST) for 1 h, followed by overnight incubation at 4°C with primary antibody against p-p70S6K (Thr389; 1:1000, Cell Signalling, Danvers, MA). The following morning, membranes were washed for 30 min with TBST and probed with a goat anti-rabbit IgG conjugated to horseradish peroxidase (HRP) secondary antibody (1:2000) for 1 h at room temperature. Membranes were then washed for 30 min in TBST and protein bands were visualized using Western Lighting-enhanced chemiluminescence reagent (Perkin-Elmer Life Sciences, Boston, MA). Signals were captured using a Kodak Digital Science Image Station 440CF (Eastman Kodak Company, Rochester, NY), and densitometry band analysis undertaken with Kodak Molecular Imaging Software (Version 4.0.5; Eastman Kodak Company). Phospho-p70S6K (Thr389) probed membranes were stripped and re probed for Total p70S6K (1:1000, Cell Signalling) using Restore Western Blot Stripping Buffer (Pierce). Due to large changes observed in the electrophoretic mobility of the Total p70S6K protein in highly phosphorylated postexercise and supplementation muscle samples it was difficult to accurately quantify total p70S6K. This large magnitude mobility shift in total p70S6K in samples with large degrees of p70S6K phosphorylation has been previously described (Karlsson et al. 2004). Total ERK2 (ERK1/2 Cell Signalling, 1:1000) was thus used as a loading control because it did not change in any condition. Loading normalized western blot data was calculated as fold change against subjects respective baseline sample which was always ran in contiguous lanes on the same gel.

Metabolomics

Muscle tissue (~50 mg) was homogenized in 500 μL of ice-cold 50% methanol spiked with 20 μL of 10 mmol/L D-4 Alanine (as an internal standard) using 2.8 mm ceramic beads and a bead mill homogenizer (OMNI RUP-TOR 24, 5.65 m/sec, 30 sec). The muscle homogenate

was transferred to a new tube, vortexed vigorously for 1 min, and frozen rapidly on dry ice. This process was repeated through two more freeze-thaw cycles. Samples were then centrifuged at 3000 g for 10 min, the supernatant was collected in a 15 mL falcon tube and placed on dry ice. The remaining tissue pellets were resuspended in 500 μL of 80% methanol and vigorously vortexed for a further 1 min. The suspension was centrifuged at 8000 g for 10 min and the resulting supernatant was pooled with that from the first centrifugation and the remaining pellet was discarded. The volume of the pooled supernatant was increased to ~5–6 mL using milli-Q water, thoroughly mixed, and were frozen at -80°C . Frozen samples were evaporated to dryness overnight using an SC250 Express SpeedVac Concentrator and RVT4104 Refrigerated Vapor Trap (Thermo Scientific Savant, San Jose, CA). Dried sample extracts were stored at -80°C until subsequent derivatization in preparation for GC-MS analysis.

Methyl chloroformate (MCF) derivatization

Methyl chloroformate derivatization was based on the previously optimized protocol (Smart et al. 2010). Freeze-dried samples were resuspended in 200 μL of 1 mol/L NaOH. Resuspended samples were transferred to silanized reaction tubes to which 167 μL of methanol and 34 μL of pyridine and 20 μL of MCF were then added. Samples were vortexed for exactly 30 sec, and this process was repeated once. To separate the MCF derivatives from the reactive mixture, 400 μL of chloroform was added to the mixture and vortexed for 10 sec. Thereafter, 400 μL of 50 mmol/L NaHCO_3 was added and vortexed for 10 sec. The upper aqueous phase was removed with a glass Pasteur pipette and 100 mg of anhydrous Na_2SO_4 was added to dry the organic solution. Once dried, the remaining chloroform solution was transferred to a Gas Chromatography–Mass Spectrometry (GC-MS) vial.

GC-MS analysis and metabolites identification

Gas Chromatography–Mass Spectrometry (GC-MS) instrument parameters were based on those reported by [Smart et al. (2010)]. The instrument used was an Agilent 7890A gas chromatograph coupled to an MSD-5975C inert mass spectrometer with a split/splitless inlet. Using a CTC PAL autosampler, 1 μL of sample was injected into a glass split/splitless 4 mm ID straight inlet liner packed with deactivated glass wool (Supelco). The inlet was set to 290°C , pulsed splitless at 180 kPa for 1 min, pressure of 56.76 kPa, and column flow of 1.0 mL/min, which gave a calculated average initial linear velocity of 35 cm/sec. 1.1 min after injection, the purge flow was set

to 25 mL/min. The capillary column used was ZB1701 (Zebron, Phenomenex, North Shore City, New Zealand) with $30\text{ m} \times 250\ \mu\text{m} \times 0.15\ \mu\text{m}$ film thickness. (86% dimethylpolysiloxane, 14% cyanopropylphenyl, Phenomenex). Carrier gas was ultra-high-purity grade helium (99.9999%, BOC). GC oven temperature programming started isothermally at 45°C for 2 min, increased $9^\circ\text{C}/\text{min}$ to 180°C , held 5 min; increased $40^\circ\text{C}/\text{min}$ to 220°C , held 5 min; increased $40^\circ\text{C}/\text{min}$ to 240°C , held 11.5 min; increased $40^\circ\text{C}/\text{min}$ to 280°C , and held 2 min. The transfer line to the MSD was maintained at 250°C , the source at 230°C and quadrupole at 150°C . 5.5 min into the run, the detector was turned on and ran in positive-ion, electron-impact ionization mode, at 70 eV electron energy, with electron multiplier set with no additional voltage relative to the autotune value. To monitor instrument carry-over, N-hexane blanks were run for every 10–12 samples. Identification of compounds was carried out using mass spectra acquired in scan mode from 38 to 550 amu, with detection threshold of 100 ion counts (Smart et al. 2010). The raw values from the GC-MS were corrected to the spiked internal standard (D-4 Alanine) and the wet mass of the tissue samples. Values are expressed as a fold change from the rested and fasted values because internal standards of each amino acid were not used and it was not possible to calculate absolute concentrations of AAs.

Data analysis

Data are presented as mean \pm standard error of the mean (SEM). Outliers were removed using automated stringent outlier testing (ROUTs 0.1%) in GraphPad Prism6 soft-

ware (GraphPad Software, Inc., La Jolla, CA) (Motulsky and Brown 2006). Cleaned data were analyzed using a two-way analyses of variance (ANOVA; treatment \times time) with repeated measures over time. Following significant main or interaction effects, Holm–Sidak post hoc tests were used for pairwise comparison between time points and supplement groups. In addition to quantitative statistical analysis, a heat map of the data showing percentage change in various amino acids from fasting levels was generated using the R program gplots package (heatmap.2 function) to identify patterns of relative changes in amino acids over time in each supplementation group. Pearson product moment coefficients were calculated to assess the relationships between variables; a linear regression was used to determine the relationship between whey protein dose and P70S6k phosphorylation. ANOVAs and correlations were calculated using SigmaPlot 12.5 (Systat Software Inc., San Jose, CA) Statistical significance was set at $P < 0.05$ level.

Results

Intramuscular amino acids

Figure 1 displays a heat map of the changes in intramuscular amino acids in response to resistance exercise and whey protein ingestion which we were able to resolve by GC-MS. Significant changes in the EAAs were limited to histidine and the three BCAAs; leucine, isoleucine and valine. Intramuscular leucine decreased below fasting levels at 4 h post exercise in the placebo group ($P < 0.05$), with a strong trend toward a decrease at the 2 h time

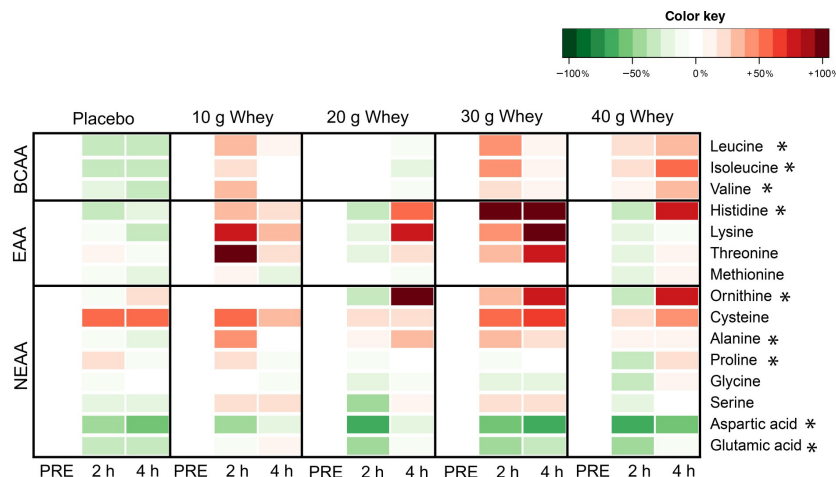


Figure 1. Intramuscular amino acids. This figure is a heat map which shows groups means fold changes from the resting fasted condition. Green represents a decrease in amino acid content, white represents no change, and red represents an increase in amino acid content. *significant effect revealed by ANOVA $P < 0.05$. Specific pairwise differences are omitted for clarity but are reported in the results section.

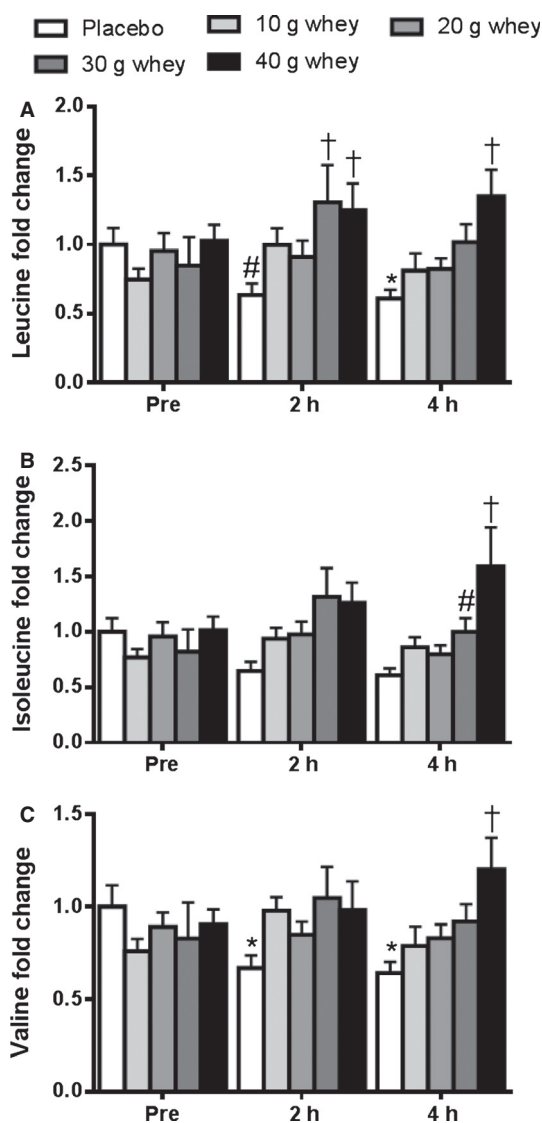


Figure 2. Intramuscular branch chain amino acids. Fold changes in (A) leucine, (B) isoleucine, and (C) valine at rest, 2 h, and 4 h post resistance exercise. *significantly different from pre-exercise within the same treatment $P < 0.05$. #trend toward difference from pre-exercise within the same treatment. †significantly different from placebo condition within the same time point.

point ($P = 0.06$) as well (Fig. 2A). The significant drop in muscle leucine during postexercise recovery was not observed in the protein supplemented groups, and leucine levels were elevated intramuscularly in the 30 g and 40 g protein supplemented groups when compared to the placebo group at 2 h post exercise ($P < 0.05$), as well as for the 40 g group only at 4 h post exercise ($P < 0.001$). Similarly, intramuscular isoleucine levels (Fig. 2B) were elevated in the 40 g whey group compared to the placebo group at 4 h post exercise ($P < 0.001$), with similar trend

observed for the 30 g whey condition ($P = 0.06$). In the placebo group, there was a drop in intramuscular valine below fasting levels at both 2 and 4 h post exercise (Fig. 2C). The decline in intramuscular valine during postexercise recovery was reversed by graded protein intake and achieved levels greater than the placebo group at the 4 h post exercise time point for those receiving in the 40 g whey supplementation group ($P < 0.001$).

Small but significant changes were observed for the NEAAs ornithine, alanine, and proline. There was significant main effect ($P = 0.024$) for greater ornithine concentrations at 4 h after exercise compared with 2 h. Elevated proline intramuscular levels were observed within the 40 g whey group at 4 h compared to 2 h post exercise ($P = 0.002$). Similarly, proline showed significantly greater levels in the 40 g whey group compared to the placebo at the 4 h post exercise time point ($P = 0.006$). At 4 h post exercise, intramuscular alanine levels were greater in the 20 g whey group compared with the placebo ($P = 0.003$) or the 10 g whey ($P = 0.014$) groups. At 4 h post exercise, intramuscular alanine levels were greater in the 20 g whey group compared with the placebo ($P = 0.003$) or the 10 g whey ($P = 0.014$) groups. There was also a decrease in intramuscular glutamic acid at 2 h ($P < 0.001$) post exercise regardless of the supplement condition (Fig. 3A). Similarly, resistance exercise alone induced a decrease in intramuscular aspartic acid at both 2 and 4 h post exercise ($P < 0.001$) in all the supplement conditions (Fig. 3B). 4-Methyl-2-oxopentanoic acid (or α -ketoisocaproic acid, α -KIC) was unchanged with the exception of lower intramuscular levels at 2 h post exercise in the 10 g whey group only (data not shown). The heat map (Fig. 1) also shows that the mean concentrations of some AAs did also tend to increase in whey supplemented groups during postexercise recovery as indicated by a red color, however, if not noted above these changes did not achieve statistical significance ($P > 0.05$).

Strong correlations were observed among intramuscular levels of the BCAAs in response to resistance exercise and whey protein supplementation. At the 2 h postexercise time point, significant linear correlations were observed between intramuscular leucine and isoleucine ($r = 0.98$, $P < 0.0001$) leucine and valine ($r = 0.95$, $P < 0.0001$), and between isoleucine and valine ($r = 0.93$, $P < 0.0001$). These correlations indicate that the BCAAs display similar kinetics and are metabolized in a similar manner.

p70S6K Thr389 phosphorylation

Figure 4 displays the fold change in p70S6K Thr389 phosphorylation during postexercise recovery in response to graded intakes of whey protein. There was a significant

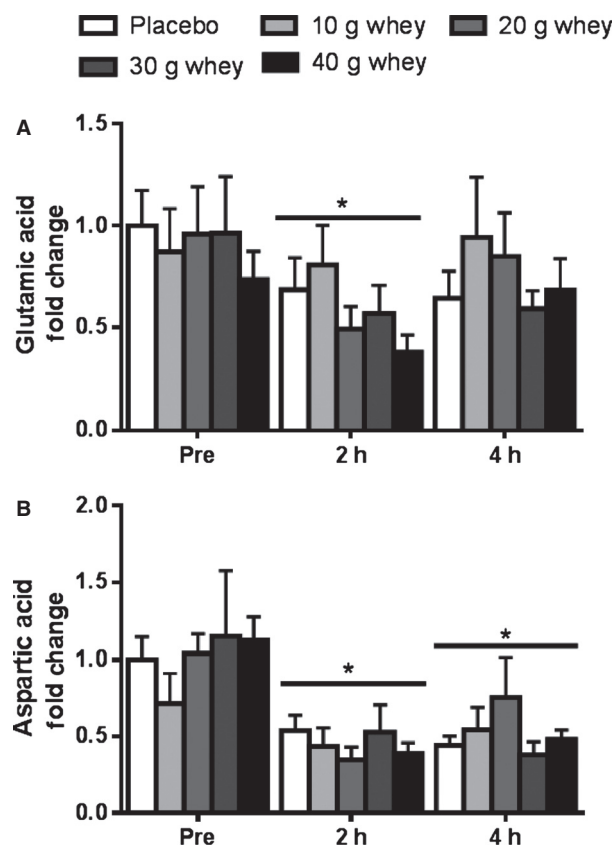


Figure 3. Intramuscular glutamic and aspartic acids. Fold changes in (A) glutamic acid and (B) aspartic acid. *main effect for time, significantly different from the pre-exercise fasted condition $P < 0.05$.

time \times group interaction; post hoc testing revealed that p70S6K phosphorylation was significantly elevated above fasting levels at 2 h post exercise only for groups receiving ≥ 20 g of whey protein supplementation. The fold change from baseline in p70S6K Thr389 phosphorylation was additionally significantly greater at 2 h post exercise in response to 40 g whey intake when compared to either the placebo or 10 g whey groups ($P < 0.05$). Furthermore, ingestion of 30 g of whey protein was found to result in significantly greater p70S6K Thr389 phosphorylation when compared to the placebo condition only ($P < 0.05$). Overall, linear regression analysis revealed a significant dose-dependent relationship at 2 h post exercise between whey protein dose ingested and the extent of p70S6K Thr389 phosphorylation ($r = 0.51$, $P < 0.001$).

Intramuscular levels of leucine at 2 h post exercise were found to be significantly and positively correlated with the extent of p70S6K Thr389 phosphorylation ($r = 0.32$, $P = 0.026$; Fig. 5) at 2 h of recovery. Similarly, this relationship was found to be significant for isoleucine

($P = 0.017$, $r = 0.33$, data not shown), and exhibit a trend toward significance for valine ($P = 0.063$, $r = 0.27$ data not shown).

Discussion

This study shows that the dose-response relationship between whey protein intake and p70S6K phosphorylation in the muscle of older men during exercise recovery follows a similar pattern to that of the previously reported between whey protein intake and MPS (Yang et al. 2012b). Furthermore, the present study is the first to characterize the changes that occur in intramuscular BCAA concentration following resistance exercise with or without graded intakes of whey protein. The results show that an acute bout of resistance exercise results in a decrease in intramuscular BCAA concentration in older men during postexercise recovery and that the whey protein supplementation can reverse this decline.

The reduction in intramuscular BCAA content after resistance exercise observed in the present study may be explained by three different, but not mutually exclusive, fates: (1) utilization for protein synthesis; (2) conversion to their respective branched-chain α -keto acids and subsequent release into the bloodstream; or (3) oxidation for energy. (Shimomura et al. 2004; Brosnan and Brosnan 2006). In a murine model, high-resistance muscular contractions performed in the fasted state have been shown to promote an influx of BCAAs, especially leucine, into the muscle (MacKenzie et al. 2009). Conversely, we found that the resistance exercise performed by older men in the fasted state in the absence of postexercise protein provision results in a decrease in intramuscular BCAA levels. The lack of change observed in intramuscular 4-Methyl-2-oxopentanoic acid (or α -ketoisocaproic acid, α -KIC) might indicate that BCAAs were being used for protein synthesis. However, it is also possible that BCAA metabolites were released from the muscle or were oxidized locally at a similar rate to which they were produced. Indeed, at the whole body level, protein supplementation has been shown to increase leucine oxidation during postexercise recovery (Yang et al. 2012b). Because we did not measure α -KIC in other tissue pools or leucine oxidation in the current study, we cannot make definitive claims about the final metabolic fate of the elevated intramuscular BCAAs.

There has been a considerable interest into the optimal dose of protein ingestion required to maximize muscle anabolism during postexercise recovery (Moore et al. 2009; Yang et al. 2012b; Witard et al. 2014). We found that as little as 10 g of whey protein was able to prevent the significant decline in intramuscular BCAA levels during postexercise recovery. However, only the larger doses

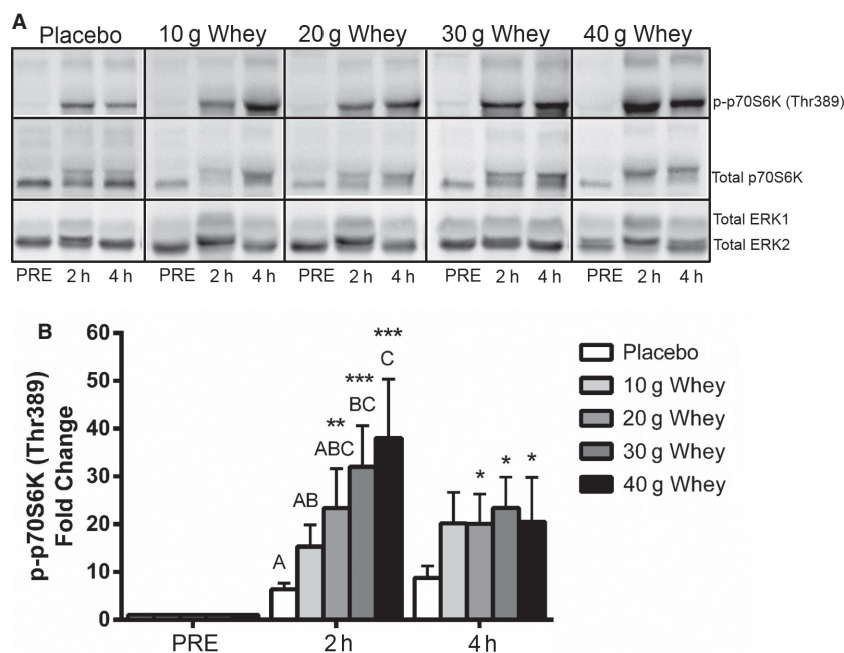


Figure 4. p70S6K kinase phosphorylation. Panel (A) shows representative western blots for p- p70S6K (Thr38), total p70S6K, and total ERK1 and 2 because of the large mobility shift in total p70S6K associated with phosphorylation total ERK2 was used as a loading control. Panel (B) shows fold change in p70S6K phosphorylation from the pre-exercise fasted condition. *Significantly different from pre in the same condition $P < 0.05$. **Significantly different from pre in the same condition $P < 0.01$. ***Significantly different from pre in the same condition $P < 0.001$ Within the 2 h post exercise condition treatments are significantly different from those with a different letter $P < 0.05$.

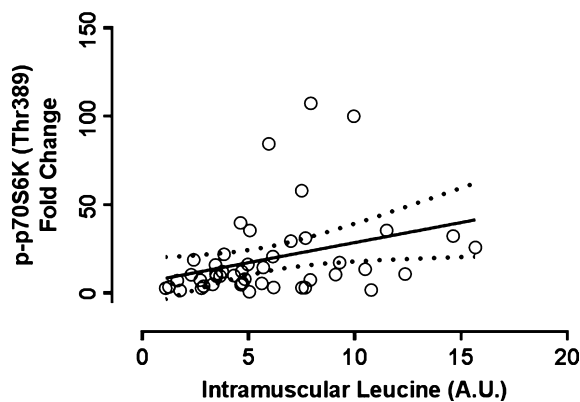


Figure 5. Relationship between p70S6K Kinase Phosphorylation and Intramuscular Leucine. Fold change from rest of p70S6K phosphorylation at 2 h post exercise was significantly correlated with intramuscular leucine content at 2 h post exercise $r = 0.32$, $P = 0.026$. The solid line represents the line of best fit as determined by linear regression and the dotted lines represent 95% confidence intervals.

of whey (30 and 40 g) were able to increase BCAA levels significantly above that seen in the placebo condition. Wijekoon et al. (Wijekoon et al. 2004) have shown a strong correlation among the concentrations of all three

BCAAs in plasma of rats. We extend this finding by showing a similarly strong correlation between the levels of the individual BCAAs in human muscle tissue, suggesting that they share similar kinetics.

We found that whey protein supplementation also increased the phosphorylation of p70S6k at Thr389 in a dose-dependent manner. Although not statistically significant, there was ~15% greater p70S6K phosphorylation after the ingestion of 40 g of whey compared to 30 g suggesting that a plateau may not have been reached. Additionally, the dose-dependent relationship beyond a 40 g dose was supported by the overall significant linear relationship between p70S6K Thr389 phosphorylation and whey dose ingested. The linear relationship between whey protein dose and muscle p70S6K phosphorylation is in agreement with the previously reported MPS data showing an increasing anabolic response up to 40 g of whey protein after resistance exercise in older men (Yang et al. 2012b). These data are in contrast to postexercise whey supplementation data in young men showing an apparent plateau in MPS response after the ingestion of whey protein dose in surplus of 20 g (Witard et al. 2014).

Among the BCAAs, leucine is thought to be the primary trigger of mTORC1 signaling (Drummond et al. 2009). Indeed, phosphorylation of p70S6k at Thr389 was

found to significantly correlate with intramuscular leucine content in the present study. This correlation is in line with mechanistic data showing that intracellular leucine sensors are obligatory for mTOR pathway activation (Zoncu *et al.* 2011; Han *et al.* 2012). Muscle protein synthesis has previously been correlated to plasma leucine concentration following protein ingestion in previous studies (Pennings *et al.* 2011). To our knowledge, this is the first study to report a correlation of p70S6K with intramuscular leucine levels in humans. Interesting however, p70S6K phosphorylation tended to be increased during postexercise recovery in the placebo group, despite a significant reduction in muscle leucine content, suggesting that resistance exercise alone in the fasted state is capable of stimulating this pathway through a leucine independent mechanism (West and Baar 2013). Nevertheless, the replenishment of intramuscular leucine during postexercise recovery appeared to promote an even greater activation of mTORC1 pathway as evidenced by heightened p70S6K phosphorylation. While p70S6K phosphorylation has been found to correlate with changes to MPS in young adults, evidence suggests some disconnect in the muscle of older subjects (Kumar *et al.* 2009; Fry *et al.* 2011). Therefore, anabolic resistance within senescent muscle may be related both to the ability of leucine to activate p70S6K (Cuthbertson *et al.* 2005) as well as disconnect between mTOR pathway activation and the resulting MPS response. The impairment of MPS in the muscle of elderly subjects in response to feeding and contraction has been controversial, with different studies reporting opposing findings (Fry *et al.* 2011; Burd *et al.* 2013; Kiskini *et al.* 2013). This heterogeneity in study findings may be due to a number of lifestyle factors such as long-term diet and physical activity patterns which may promote dissociation between chronological age and anabolic sensitivity (Churchward-Venne *et al.* 2013a).

While the plasma amino acid response to protein feeding, with or without resistance exercise, has been routinely measured, intramuscular amino acid responses have received much less attention. Bohé *et al.* (Bohe *et al.* 2003) concluded that at rest the infusion of amino acids led to a large rise in plasma EAA content, but a decrease in the levels of EAA locally within the skeletal muscle tissue. These results were extrapolated to hypothesize that extracellular, rather than intracellular EAA content, are the primary regulators of the anabolic response to protein feeding. Nevertheless, Bohé *et al.* measured only aggregate EAA responses and did not report changes in individual AAs or BCAAs (Bohe *et al.* 2003). This study also shows greater intracellular EAA concentration compared with plasma EAA levels suggesting that EAAs must travel up a concentration gradient to enter the muscle cell. More recent studies have replicated the finding of greater EAA

concentration intramuscularly compared to in circulation but have found that BCAAs, and in particular leucine, are found at higher concentrations in the plasma when compared with the muscle sarcoplasm (Churchward-Venne *et al.* 2012, 2014). Taken together, these results suggest that BCAAs are regulated in a different manner than the other EAAs. On this basis, it is important to consider the concentration of the BCAA independent from other EAAs.

Previous studies have shown that in young and older men, (Drummond *et al.* 2011) resistance exercise in the fasted state reduces intramuscular leucine content. Furthermore, in young men the provision of protein containing leucine after resistance exercise has been reported to result in the maintenance of intramuscular leucine content during postexercise recovery (Churchward-Venne *et al.* 2012, 2014). The present study expands on these findings by showing that in older men the provision of whey protein reverses the drop in intramuscular leucine and other BCAAs caused by resistance exercise. Intramuscular leucine did not increase in a clear linear fashion with increasing doses of whey protein, but did appear to explain ~10% of the variance in p70S6K phosphorylation. There are two likely explanations for the relatively low proportion of the variance explained in p70S6K phosphorylation by intramuscular leucine levels. Firstly, recent work suggests that the lumen of the lysosomes may be the cellular location where amino acids (primarily leucine) are sensed, so the direct measurement of this subcellular concentration might yield a stronger correlation with anabolic response (Zoncu *et al.* 2011). Secondly, while aging results in an anabolic resistance to feeding, it is likely that related decreases in physical activity and increased inflammation mediate this anabolic resistance rather than the chronological age per se (Churchward-Venne *et al.* 2013b). This assertion is partially supported by the relationship between intramuscular leucine and p70S6K phosphorylation (Fig. 5) observed in the present study, which appeared to show that some subjects (those falling above the trend line) appear to possess a higher anabolic sensitivity and are able to mount a larger p70S6K phosphorylation response to smaller changes in intramuscular leucine levels. On the other hand, there was a subset of subjects (below the trend line) who exhibited more modest augmentation of the p70S6K response in the presence of a high intramuscular leucine levels.

Only very minor changes were observed in most of the nonessential amino acids measured in human muscle in the present study. However, both aspartic acid and glutamic acid were found to be reduced intramuscularly following resistance exercise, even following the ingestion of the maximally tested 40 g dose of whey protein. This is a somewhat surprising result given that glutamic acid and aspartic acid are two of the most abundant amino acids in

whey protein. The unresponsiveness of intramuscular aspartic and glutamic acid to protein supplementation may be explained by the fact that most of dietary aspartic acid and glutamic acid are retained and utilized by the gastrointestinal tissues such that they may not be available to the muscle in large amounts following feeding (Stoll and Burrin 2006). Nevertheless, despite low intramuscular aspartic acid and glutamic acid availability, subjects were still able to mount a robust anabolic response as assessed by p70S6K activation suggesting a disconnect between these particular NEAAs and muscle anabolic signaling during postexercise recovery.

Conclusion

This study shows that in older men resistance exercise in the fasted state results in a decrease in intramuscular BCAA content, but does not appear to influence the local levels of the remaining EAAs. As little as 10 g of whey protein supplementation was able to prevent the decrease in intramuscular BCAAs that occurred when resistance exercise was performed in the fasted state. While our results suggest that larger doses 30–40 g of whey protein were required to significantly increase intramuscular BCAA levels above those seen with only placebo ingestion, p70S6K phosphorylation was increased in a dose-dependent manner by ingestion of up to 40 g of whey protein. This result is in agreement with recently reported MPS data which show that in contrast to young men, older subjects may require more than the 20 g of high-quality protein in order to maximize the muscle anabolic response during the postexercise recovery.

Acknowledgments

The authors would like to thank the study volunteers. The authors are also exceptionally grateful for the medical support supplied by A. Garnham, who undertook all muscle biopsy procedures and M. Frankish who assisted with the clinical study.

Conflict of Interest

None declared.

References

- Atherton, P. J., K. Smith, T. Etheridge, D. Rankin, and M. J. Rennie. 2010. Distinct anabolic signalling responses to amino acids in C2C12 skeletal muscle cells. *Amino Acids* 38:1533–1539.
- Baar, K., and K. Esser. 1999. Phosphorylation of p70(S6k) correlates with increased skeletal muscle mass following resistance exercise. *Am. J. Physiol.* 276:C120–C127.
- Bohe, J., A. Low, R. R. Wolfe, and M. J. Rennie. 2003. Human muscle protein synthesis is modulated by extracellular, not intramuscular amino acid availability: a dose-response study. *J. Physiol.* 552:315–324.
- Brosnan, J. T., and M. E. Brosnan. 2006. Branched-chain amino acids: enzyme and substrate regulation. *J. Nutr.* 136:207S–211S.
- Burd, N. A., A. M. Holwerda, K. C. Selby, D. W. West, A. W. Staples, N. E. Cain, et al. 2010a. Resistance exercise volume affects myofibrillar protein synthesis and anabolic signalling molecule phosphorylation in young men. *J. Physiol.* 588:3119–3130.
- Burd, N. A., D. W. West, A. W. Staples, P. J. Atherton, J. M. Baker, D. R. Moore, et al. 2010b. Low-load high volume resistance exercise stimulates muscle protein synthesis more than high-load low volume resistance exercise in young men. *PLoS ONE* 5:e12033.
- Burd, N. A., S. H. Gorissen, and L. J. van Loon. 2013. Anabolic resistance of muscle protein synthesis with aging. *Exerc. Sport Sci. Rev.* 41:169–173.
- Churchward-Venne, T. A., N. A. Burd, C. J. Mitchell, D. W. West, A. Philp, G. R. Marcotte, et al. 2012. Supplementation of a suboptimal protein dose with leucine or essential amino acids: effects on myofibrillar protein synthesis at rest and following resistance exercise in men. *J. Physiol.* 590:2751–2765.
- Churchward-Venne, T. A., L. Breen, and S. M. Phillips. 2013a. Alterations in human muscle protein metabolism with aging: protein and exercise as countermeasures to offset sarcopenia. *BioFactors* 40:199–205.
- Churchward-Venne, T. A., C. H. Murphy, T. M. Longland, and S. M. Phillips. 2013b. Role of protein and amino acids in promoting lean mass accretion with resistance exercise and attenuating lean mass loss during energy deficit in humans. *Amino Acids* 45:231–240.
- Churchward-Venne, T. A., L. Breen, D. M. Di Donato, A. J. Hector, C. J. Mitchell, D. R. Moore, et al. 2014. Leucine supplementation of a low-protein mixed macronutrient beverage enhances myofibrillar protein synthesis in young men: a double-blind, randomized trial. *Am. J. Clin. Nutr.* 99:276–286.
- Cuthbertson, D., K. Smith, J. Babraj, G. Leese, T. Waddell, P. Atherton, et al. 2005. Anabolic signaling deficits underlie amino acid resistance of wasting, aging muscle. *FASEB J.* 19:422–424.
- Drummond, M. J., H. C. Dreyer, C. S. Fry, E. L. Glynn, and B. B. Rasmussen. 2009. Nutritional and contractile regulation of human skeletal muscle protein synthesis and mTORC1 signaling. *J. Appl. Physiol.* 106:1374–1384.
- Drummond, M. J., E. L. Glynn, C. S. Fry, K. L. Timmerman, E. Volpi, and B. B. Rasmussen. 2010. An increase in essential amino acid availability upregulates amino acid transporter expression in human skeletal muscle. *Am. J. Physiol. Endocrinol. Metab.* 298:E1011–E1018.

- Drummond, M. J., C. S. Fry, E. L. Glynn, K. L. Timmerman, J. M. Dickinson, D. K. Walker, et al. 2011. Skeletal muscle amino acid transporter expression is increased in young and older adults following resistance exercise. *J. Appl. Physiol.* (1985) 111:135–142.
- Fry, C. S., M. J. Drummond, E. L. Glynn, J. M. Dickinson, D. M. Gundersen, K. L. Timmerman, et al. 2011. Aging impairs contraction-induced human skeletal muscle mTORC1 signaling and protein synthesis. *Skelet. Muscle* 1:11.
- Glynn, E. L., C. S. Fry, M. J. Drummond, H. C. Dreyer, S. Dhanani, E. Volpi, et al. 2010. Muscle protein breakdown has a minor role in the protein anabolic response to essential amino acid and carbohydrate intake following resistance exercise. *Am. J. Physiol. Regul. Integr. Comp. Physiol.* 299:R533–R540.
- Han, J. M., S. J. Jeong, M. C. Park, G. Kim, N. H. Kwon, H. K. Kim, et al. 2012. Leucyl-tRNA synthetase is an intracellular leucine sensor for the mTORC1-signaling pathway. *Cell* 149:410–424.
- Hartman, J. W., J. E. Tang, S. B. Wilkinson, M. A. Tarnopolsky, R. L. Lawrence, A. V. Fullerton, et al. 2007. Consumption of fat-free fluid milk after resistance exercise promotes greater lean mass accretion than does consumption of soy or carbohydrate in young, novice, male weightlifters. *Am. J. Clin. Nutr.* 86:373–381.
- Karlsson, H. K., P. A. Nilsson, J. Nilsson, A. V. Chibalin, J. R. Zierath, and E. Blomstrand. 2004. Branched-chain amino acids increase p70S6k phosphorylation in human skeletal muscle after resistance exercise. *Am. J. Physiol. Endocrinol. Metab.* 287:E1–E7.
- Kiskini, A., H. M. Hamer, B. T. Wall, B. B. Groen, A. de Lange, J. A. Bakker, et al. 2013. The muscle protein synthetic response to the combined ingestion of protein and carbohydrate is not impaired in healthy older men. *Age (Dordr)* 35:2389–2398.
- Kumar, V., A. Selby, D. Rankin, R. Patel, P. Atherton, W. Hildebrandt, et al. 2009. Age-related differences in the dose-response relationship of muscle protein synthesis to resistance exercise in young and old men. *J. Physiol.* 587:211–217.
- MacKenzie, M. G., D. L. Hamilton, J. T. Murray, P. M. Taylor, and K. Baar. 2009. mVps34 is activated following high-resistance contractions. *J. Physiol.* 587:253–260.
- Mayhew, D. L., J. S. Kim, J. M. Cross, A. A. Ferrando, and M. M. Bamman. 2009. Translational signaling responses preceding resistance training-mediated myofiber hypertrophy in young and old humans. *J. Appl. Physiol.* 107:1655–1662.
- Mitchell, C. J., T. A. Churchward-Venne, D. W. West, N. A. Burd, L. Breen, S. K. Baker, et al. 2012. Resistance exercise load does not determine training-mediated hypertrophic gains in young men. *J. Appl. Physiol.* 113:71–77.
- Mitchell, C. J., T. A. Churchward-Venne, L. Bellamy, G. Parise, S. K. Baker, and S. M. Phillips. 2013. Muscular and Systemic Correlates of Resistance Training-Induced Muscle Hypertrophy. *PLoS ONE* 8:e78636.
- Mitchell, C. J., T. A. Churchward-Venne, G. Parise, L. Bellamy, S. K. Baker, K. Smith, et al. 2014. Acute post-exercise myofibrillar protein synthesis is not correlated with resistance training-induced muscle hypertrophy in young men. *PLoS ONE* 9:e89431.
- Moore, D. R., M. J. Robinson, J. L. Fry, J. E. Tang, E. I. Glover, S. B. Wilkinson, et al. 2009. Ingested protein dose response of muscle and albumin protein synthesis after resistance exercise in young men. *Am. J. Clin. Nutr.* 89:161–168.
- Motulsky, H. J., and R. E. Brown. 2006. Detecting outliers when fitting data with nonlinear regression – a new method based on robust nonlinear regression and the false discovery rate. *BMC Bioinformatics* 7:123.
- Pennings, B., Y. Boirie, J. M. Senden, A. P. Gijzen, H. Kuipers, and L. J. van Loon. 2011. Whey protein stimulates postprandial muscle protein accretion more effectively than do casein and casein hydrolysate in older men. *Am. J. Clin. Nutr.* 93:997–1005.
- Reynolds, J. M., T. J. Gordon, and R. A. Robergs. 2006. Prediction of one repetition maximum strength from multiple repetition maximum testing and anthropometry. *J. Strength Cond. Res.* 20:584–592.
- Shimomura, Y., T. Murakami, N. Nakai, M. Nagasaki, and R. A. Harris. 2004. Exercise promotes BCAA catabolism: effects of BCAA supplementation on skeletal muscle during exercise. *J. Nutr.* 134:1583S–1587S.
- Smart, K. F., R. B. Aggio, J. R. Van Houtte, and S. G. Villas-Boas. 2010. Analytical platform for metabolome analysis of microbial cells using methyl chloroformate derivatization followed by gas chromatography-mass spectrometry. *Nat. Protoc.* 5:1709–1729.
- Smith, K., J. M. Barua, P. W. Watt, C. M. Scrimgeour, and M. J. Rennie. 1992. Flooding with L-[1-13C] leucine stimulates human muscle protein incorporation of continuously infused L-[1-13C] valine. *Am. J. Physiol.* 262: E372–E376.
- Stoll, B., and D. G. Burrin. 2006. Measuring splanchnic amino acid metabolism in vivo using stable isotopic tracers. *J. Anim. Sci.* 84(Suppl):E60–E72.
- Terzis, G., G. Georgiadis, G. Stratakos, I. Vogiatzis, S. Kavouras, P. Manta, et al. 2008. Resistance exercise-induced increase in muscle mass correlates with p70S6 kinase phosphorylation in human subjects. *Eur. J. Appl. Physiol.* 102:145–152.
- West, D. W., and K. Baar. 2013. May the Force move you: TSC-ing the mechanical activation of mTOR. *J. Physiol.* 591:4369–4370.
- West, D. W., N. A. Burd, J. E. Tang, D. R. Moore, A. W. Staples, A. M. Holwerda, et al. 2009a. Elevations in ostensibly anabolic hormones with resistance exercise enhance neither training-induced muscle hypertrophy nor strength of the elbow flexors. *J. Appl. Physiol.* 108:60–67.

- West, D. W., G. W. Kujbida, D. R. Moore, P. Atherton, N. A. Burd, J. P. Padzik, et al. 2009b. Resistance exercise-induced increases in putative anabolic hormones do not enhance muscle protein synthesis or intracellular signalling in young men. *J. Physiol.* 587:5239–5247.
- Wijekoon, E. P., C. Skinner, M. E. Brosnan, and J. T. Brosnan. 2004. Amino acid metabolism in the Zucker diabetic fatty rat: effects of insulin resistance and of type 2 diabetes. *Can. J. Physiol. Pharmacol.* 82:506–514.
- Wilkinson, S. B., M. A. Tarnopolsky, M. J. MacDonald, J. R. MacDonald, D. Armstrong, and S. M. Phillips. 2007. Consumption of fluid skim milk promotes greater muscle protein accretion after resistance exercise than does consumption of an isonitrogenous and isoenergetic soy-protein beverage. *Am. J. Clin. Nutr.* 85:1031–1040.
- Witard, O. C., S. R. Jackman, L. Breen, K. Smith, A. Selby, and K. D. Tipton. 2014. Myofibrillar muscle protein synthesis rates subsequent to a meal in response to increasing doses of whey protein at rest and after resistance exercise. *Am. J. Clin. Nutr.* 99:86–95.
- Yang, Y., L. Breen, N. A. Burd, A. J. Hector, T. A. Churchward-Venne, A. R. Josse, et al. 2012a. Resistance exercise enhances myofibrillar protein synthesis with graded intakes of whey protein in older men. *Br. J. Nutr.* 108:1780–1788.
- Yang, Y., T. A. Churchward-Venne, N. A. Burd, L. Breen, M. A. Tarnopolsky, and S. M. Phillips. 2012b. Myofibrillar protein synthesis following ingestion of soy protein isolate at rest and after resistance exercise in elderly men. *Nutr. Metab.* 9:57.
- Zoncu, R., L. Bar-Peled, A. Efeyan, S. Wang, Y. Sancak, and D. M. Sabatini. 2011. mTORC1 senses lysosomal amino acids through an inside-out mechanism that requires the vacuolar H(+)-ATPase. *Science* 334:678–683.