



THE UNIVERSITY *of* EDINBURGH

Edinburgh Research Explorer

## The Erythroblastic Island Niche: Modelling in Health, Stress and Disease.

**Citation for published version:**

May, A & Forrester, LM 2020, 'The Erythroblastic Island Niche: Modelling in Health, Stress and Disease.', *Experimental Hematology*. <https://doi.org/10.1016/j.exphem.2020.09.185>

**Digital Object Identifier (DOI):**

[10.1016/j.exphem.2020.09.185](https://doi.org/10.1016/j.exphem.2020.09.185)

**Link:**

[Link to publication record in Edinburgh Research Explorer](#)

**Document Version:**

Peer reviewed version

**Published In:**

Experimental Hematology

**General rights**

Copyright for the publications made accessible via the Edinburgh Research Explorer is retained by the author(s) and / or other copyright owners and it is a condition of accessing these publications that users recognise and abide by the legal requirements associated with these rights.

**Take down policy**

The University of Edinburgh has made every reasonable effort to ensure that Edinburgh Research Explorer content complies with UK legislation. If you believe that the public display of this file breaches copyright please contact [openaccess@ed.ac.uk](mailto:openaccess@ed.ac.uk) providing details, and we will remove access to the work immediately and investigate your claim.



# Experimental Hematology

## The Erythroblastic island niche: modelling in health, stress and disease

--Manuscript Draft--

<b>Manuscript Number:</b>	20-179R1
<b>Article Type:</b>	Review Article
<b>Keywords:</b>	erythroblastic island; erythropoiesis; in vitro modelling
<b>Corresponding Author:</b>	Lesley M Forrester University of Edinburgh Edinburgh, Scotland UNITED KINGDOM
<b>First Author:</b>	Alisha May, MSc
<b>Order of Authors:</b>	Alisha May, MSc Lesley M Forrester
<b>Abstract:</b>	<p>Erythropoiesis is one of the most demanding processes in the body, with over two million red blood cells produced every second. Multiple hereditary and acquired red blood cell disorders arise from this complex system, with existing treatments effective in managing some of these conditions but few offering a long-term cure. Finding new treatments relies on the full understanding of the cellular and molecular interactions associated with the production and maturation of red blood cells, which takes place within the erythroblastic island niche. The elucidation of processes associated within the erythroblastic island niche in health and during stress erythropoiesis has relied on in vivo modelling in mice, with complexities dissected using simple in vitro systems. Recent progress using state of the art stem cell technology and gene editing has enabled a more detailed study of the human niche. Here, we review these different models and describe how they have been used to identify and characterise the cellular and molecular pathways associated with red blood cell production and maturation. We speculate that these systems could be applied to modelling red blood cell diseases and finding new druggable targets, which would prove especially useful for patients resistant to existing treatments. These models could also aid in research into the manufacturing of red blood cells in vitro to replace donor blood transfusions, which is the most common treatment of blood disorders.</p>



THE UNIVERSITY of EDINBURGH  
Institute for Regeneration and Repair

---

## Centre for Regenerative Medicine

### Centre for Regenerative Medicine

Institute for Regeneration and Repair  
The University of Edinburgh  
Edinburgh BioQuarter  
5 Little France Drive  
Edinburgh  
EH16 4UU

**Tel:** +44 (0) 131 651 9500

**Fax:** +44 (0) 131 651 9501

[regenerative-medicine@ed.ac.uk](mailto:regenerative-medicine@ed.ac.uk)

[www.ed.ac.uk/regenerative-medicine](http://www.ed.ac.uk/regenerative-medicine)

[www.ed.ac.uk/regeneration-repair](http://www.ed.ac.uk/regeneration-repair)

1<sup>st</sup> September 2020

Dear Connie,

Ms. No. 20-179

Thank you for your positive response to our Review manuscript on The Erythroblastic Island Niche: Modelling in Health, Stress and Disease.

We now submit a revised version of the manuscript where we have addressed all the comments of the reviewers and highlighted the key changes in red font. We include a detailed response to the reviewers' comments where we have outlined the key changes we have made and refer to the page and line numbers on the revised manuscript where appropriate. We have made minor alterations to the Figure and Table in response to the comments and now include a Graphical abstract. The reviewers' comments have been really helpful and have certainly served to improve the quality of our manuscript.

Please let me know if you require any further changes.

Yours sincerely

A handwritten signature in black ink that reads 'Lesley Forrester'.

Lesley Forrester  
Professor of Stem Cell Differentiation

This piece of the submission is being sent via mail.

This piece of the submission is being sent via mail.

Title: The Erythroblastic Island Niche: Modelling in Health, Stress and Disease.

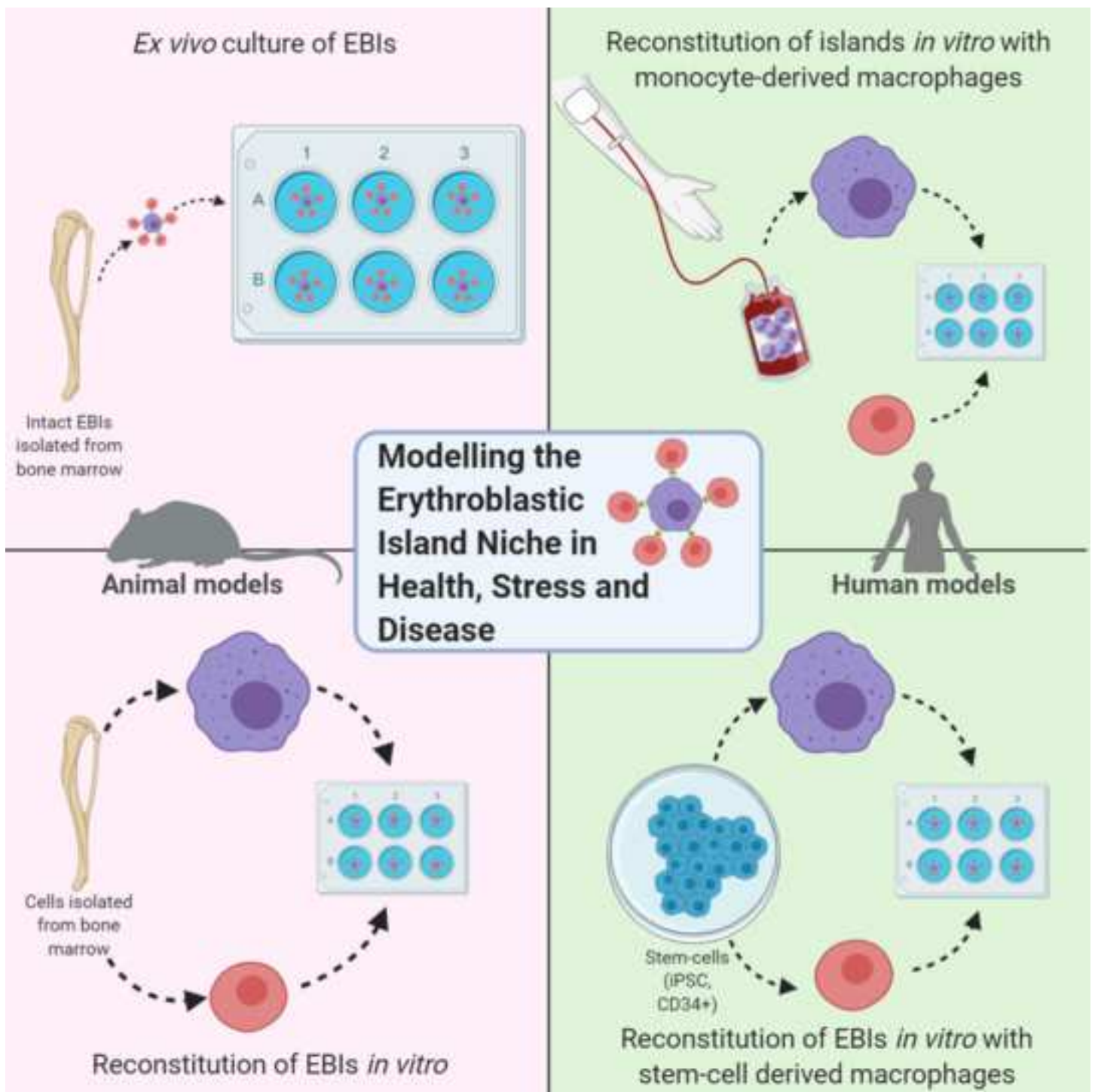
Authors: Alisha May<sup>1</sup> and Lesley M. Forrester<sup>1\*</sup>

1. Centre for Regenerative Medicine, Institute for Regeneration and Repair, University of Edinburgh, 5 Little France Drive, Edinburgh EH16 4UU, Scotland, UK

\*Corresponding author: Professor Lesley Forrester PhD ([L.Forrester@ed.ac.uk](mailto:L.Forrester@ed.ac.uk)) (telephone +44 131 6519553 or +44 7762909415)

Alisha May: [a.may-1@sms.ed.ac.uk](mailto:a.may-1@sms.ed.ac.uk)

Word count: 4743



## Highlights

- Erythroid cells mature in association with macrophages within erythroblastic islands.
- Molecular interactions within the erythroblastic island niche are poorly understood.
- *In vivo* genetic models and *in vitro* co-culture systems have been used to gain insight.
- We reviews these different model systems and highlight the key findings to date.



## The Erythroblastic Island Niche: Modelling in Health, Stress and Disease.

Alisha May and Lesley M Forrester.

- Centre for Regenerative Medicine, Institute for Regeneration and Repair, University of Edinburgh, 5 Little France Drive, Edinburgh EH16 4UU.

### Abstract

Erythropoiesis is one of the most demanding processes in the body, with over two million red blood cells produced every second. Multiple hereditary and acquired red blood cell disorders arise from this complex system, with existing treatments effective in managing some of these conditions but few offering a long-term cure. Finding new treatments relies on the full understanding of the cellular and molecular interactions associated with the production and maturation of red blood cells, which takes place within the erythroblastic island niche. The elucidation of processes associated within the erythroblastic island niche in health and during stress erythropoiesis has relied on *in vivo* modelling in mice, with complexities dissected using simple *in vitro* systems. Recent progress using state of the art stem cell technology and gene editing has enabled a more detailed study of the human niche. Here, we review these different models and describe how they have been used to identify and characterise the cellular and molecular pathways associated with red blood cell production and maturation. We speculate that these systems could be applied to modelling red blood cell diseases and finding new druggable targets, which would prove especially useful for patients resistant to existing treatments. These models could also aid in research into the manufacturing of red blood cells *in vitro* to replace donor blood transfusions, which is the most common treatment of blood disorders.

## 1 1. Introduction

2 The erythroblastic island, first visualised by Marcel Bessis in 1958, is the site of erythropoiesis in  
3 mammals (1). Erythroblastic islands are predominately situated in the bone marrow during steady-  
4 state erythropoiesis, but expand in the fetal liver and adult spleen during stress erythropoiesis when  
5 there is a rapid production of erythrocytes in response to inflammation and anemia (1-4). The island  
6 consists of a central macrophage (erythroblastic island [EBI] macrophage), surrounded by developing  
7 erythroblasts, which was hypothesised to supply ferritin to the developing erythroblasts for  
8 hemoglobin synthesis (5, 6). Additional functions of the central macrophage have since been  
9 elucidated, confirming its role as a supportive 'nurse' cell during erythropoiesis. EBI macrophages  
10 support erythroblast differentiation through cell-cell contact and secreted supportive factors,  
11 promoting the maturation and enucleation of erythroid cells and the phagocytosis of their expelled  
12 nuclei (7-10).

13 While there have been extensive studies into the hematopoietic stem cell (HSC) bone marrow niche  
14 microenvironment, the erythroblastic island niche (EBI niche) has been the focus of a relatively small  
15 number of research groups (11-13). In contrast to the vast array of cell types implicated in the HSC  
16 niche, the EBI niche appears to be relatively simple with no other cell type being implicated to work  
17 in concert with EBI macrophages (14). This offers the EBI as a unique and streamlined niche to study  
18 red blood cell (RBC) development in health and disease and the development of model systems is  
19 relatively straightforward.

20 Anemia represents the most prevalent RBC disorder and is crudely defined as a condition in patients  
21 who lack adequate numbers of healthy RBCs and diagnosed by a low blood hemoglobin (Hb)  
22 concentration (15). Anemia affects approximately 1.62 billion people worldwide, accounting for  
23 8.8% of the total worldwide disease burden (16, 17). RBC disorders represent a broad spectrum of  
24 conditions, spanning inherited disorders such as thalassemia and sickle cell anemia, to acquired  
25 disorders such as polycythemia vera and paroxysmal nocturnal hemoglobinuria (PNH), with mild to  
26 fatal clinical outcomes (18-22).

27 Current treatments for RBC disorders include blood transfusions and iron chelation therapy to  
28 counteract iron accumulation in patients requiring repeated transfusion, or iron supplements for  
29 iron-deficiency anemia (23, 24). Several drugs that stimulate erythropoiesis have been approved,  
30 such as erythropoietin (EPO) that is used routinely to treat anemias associated with chronic kidney  
31 disease and cancer (25-27). Rarer RBC disorders, such as PNH, have fewer effective treatment  
32 options and these are often prohibitively expensive. Eculizumab, for example, is a monoclonal  
33 antibody against terminal complement protein C5 that is used to reduce hemolysis and stabilise  
34 hemoglobin levels. Not only is it widely reported as one of the world's most expensive drugs at a  
35 cost of around \$400,000 per year of treatment, but only 20% of patients reach normal hemoglobin  
36 values and 40% remain anemic (28, 29). Some RBC disorders, including PNH and acquired aplastic  
37 anemia, can be effectively cured by bone marrow transplantation (30, 31) but this procedure is  
38 associated with significant morbidity and mortality rates due to the requirement for preconditioning  
39 **which ablates the haematopoiesis of the host** (31, 32). There is a clear clinical need for the  
40 development of new therapies to treat RBC disorders.

41 A full understanding of the cellular and molecular pathways involved in the EBI niche and how these  
42 contribute to stress erythropoiesis and disease would allow for the development of new therapies to  
43 treat RBC disorders. Early models of the EBI niche provided insights into its structure and  
44 organisation, later followed by more sophisticated genetic models that demonstrated the roles of  
45 individual genes in the niche in both animal models and humans. Here, we review the *in vivo* and *in*

1 *vitro* models that have been used to study the EBI niche. We discuss the advantages and  
2 disadvantages of each (Table 1) and summarise some of the key advances that have been made  
3 using these models in our understanding of steady-state, stress and disease erythropoiesis (Figure  
4 1).

## 5 **2. Erythropoiesis and the EBI**

6 In the first stage of RBC production, HSCs sequentially differentiate to common myeloid progenitor,  
7 megakaryocyte-erythroid progenitor, burst-forming unit-erythroid (BFU-E), and colony-forming unit-  
8 erythroid (CFU-E) progenitor cells (33-36). In the second stage, CFU-E progenitor cells differentiate  
9 through the morphologically distinct nucleated precursors proerythroblast, basophilic erythroblast,  
10 polychromatic erythroblast and orthochromatic erythroblast (37). As the differentiating erythroid  
11 cells mature nuclear chromatin is condensed and cytoskeletal remodelling occurs in preparation for  
12 nuclear expulsion (38, 39).

13 The proerythroblast to orthochromatic stages of differentiation occur within the EBI. Macrophage-  
14 erythroblast adhesion molecules function to promote erythroblast proliferation and are highly  
15 expressed in proerythroblasts, with expression progressively lost by the orthochromatic erythroblast  
16 stage (40-42). The central macrophage secretes cytokines that promote the enucleation of  
17 erythroblasts, and provides iron for heme synthesis (6, 8, 43, 44). The composition of EBIs varies  
18 slightly across species, with rat EBIs containing consistently around 10 erythroblasts per island  
19 compared to much more variable human EBIs, where 5 to 30 erythroblasts can be found surrounding  
20 the central macrophage (45, 46).

21 At the final terminal differentiation stage, the nucleus is expelled from the orthochromatic  
22 erythroblast and phagocytosed by the EBI macrophage (47). The resulting reticulocyte expels any  
23 remaining organelles and enters circulation (38). Considerable membrane remodelling then takes  
24 place to generate fully mature, biconcave erythrocytes (48, 49).

## 25 **3. Modelling the EBI Niche using Animal Models**

### 26 **3.1. Isolation of intact EBIs**

27 Early investigations into the structure and organisation of EBIs involved careful isolation and study of  
28 rodent bone marrow using various types of microscopy (50). The first image of an EBI, obtained by  
29 Bessis in 1958, was achieved by examining bone marrow preparations using phase-contrast  
30 microscopy (1). Light and electron microscopy were later used to construct three-dimensional  
31 reconstructions of rat bone marrow, showing distinct *in situ* EBIs in which erythroblasts underwent  
32 maturation in close association with macrophages (2). After these initial morphological assessments  
33 of the central mononuclear cells present in EBIs as macrophages, F4/80 antibody staining confirmed  
34 that resident macrophages in mouse bone marrow formed the EBIs (51). Light and electron  
35 microscopy has also been used to demonstrate that EBIs are not spatially restricted within the bone  
36 marrow and their composition is altered depending on their location. For example, EBIs adjacent to  
37 sinusoids are enriched for orthochromatophilic erythroblasts, while nonadjacent EBIs are enriched in  
38 proerythroblasts, suggesting a mechanism **in which islands migrate to sinusoids as erythroid**  
39 **differentiation progresses (52). Although the information gleaned from microscopy studies tends to**  
40 **present EBIs as static structures, the fact that they migrate indicates that they are actually quite**  
41 **dynamic and it is likely that the cell-cell interactions change over time.** In tandem with microscopy  
42 studies, isolated EBIs were further characterised via antibody staining (53). EBIs were found to range  
43 from 5-100 cells, and the majority of isolated islands contained at least one F4/80<sup>+</sup> central  
44 macrophage (53). Isolation of intact EBIs from different hematopoietic tissues and subsequent

1 analysis of known EBI macrophage cell surface markers revealed them to be a heterogeneous  
2 macrophage population (54-56). Mouse and rat EBIs heterogeneously express VCAM-1, F4/80 and  
3 CD169, while CD163 was only expressed by rat macrophages (54). The study of intact EBIs provided  
4 visual data for the composition of islands and is useful for characterising the component phenotypes  
5 of the EBI niche *in vivo* but it has limitations. **It is a static system and cannot be used to dissect the**  
6 **molecular mechanisms associated with its function (Table 1).**

### 7 **3.2. *In vitro* reconstitution of EBIs**

8 As well as *ex vivo* culture of EBIs harvested from rodents, the reconstitution of EBIs *in vitro* through  
9 the co-culture of erythroblasts and macrophages was first proposed in 1979, and is now a method  
10 widely employed (9, 42, 57-60). Through studies using reconstituted EBIs it was observed that  
11 macrophages support erythroid differentiation through their direct contact with erythroblasts via an  
12 EPO-independent mechanism, with cultured erythroblasts proliferating 3-fold more when in contact  
13 with macrophages (41, 42).

14 Studies employing reconstituted EBIs have been used to elucidate proteins involved in erythroblast  
15 and macrophage interactions. Erythroblast-macrophage attachments within the EBI niche are  
16 important in promoting erythropoiesis, and the adhesion proteins that facilitate these attachments  
17 are critical for island integrity. One of the first proteins identified to be involved in erythroblast-  
18 macrophage attachment was  $\alpha 4\beta 1$  integrin on erythroblasts that binds VCAM-1 on macrophages  
19 (55). Blocking monoclonal antibodies against  $\alpha 4\beta 1$  integrin and VCAM-1 significantly impaired  
20 erythroblast-macrophage attachment, demonstrating that this interaction is critical for island  
21 integrity (55). Reconstitution of EBIs *in vitro* has been a powerful model to observe the dynamic  
22 relationship between cell types, **but the strategy is limited by culture conditions and does not allow**  
23 **for investigation of the possible interactions of other cell types in the bone marrow. Furthermore, it**  
24 **is unclear how this relates to the *in vivo* situation and how transferable it would be to the human**  
25 **EBI. (Table 1).**

### 26 **3.3. Macrophage depletion models**

#### 27 **3.3.1. Macrophage depletion models in stress erythropoiesis**

28 Macrophage depletion has been a particularly useful model to investigate the role of the  
29 macrophage compartment of the EBI niche *in vivo*. Macrophages can be depleted by administering  
30 clodronate-encapsulated liposomes which are phagocytosed and induce apoptosis (61-63) or using  
31 the CD169-DTR mouse strain which expresses the human diphtheria toxin receptor (DTR) under the  
32 control of the endogenous *Siglec-1* (CD169) promoter (64). **Macrophage depletion is relatively easy**  
33 **to achieve, and can be applied to the different genetic models (Table 1).**

34 **Macrophage depletion models have been used to study the contribution of EBI macrophages to**  
35 **stress erythropoiesis in addition to the contribution of microenvironmental cells, for example splenic**  
36 **endothelial cells secrete SCF that mediates stress erythropoiesis in response to myeloablation,**  
37 **bleeding and pregnancy (65).** Macrophage depletion has been shown to severely compromise stress  
38 erythropoiesis, impairing recovery from anemia, acute blood loss and myeloablation. In a study in  
39 which macrophages were depleted using clodronate there was a significant reduction in  
40 reticulocytes and erythroid precursors in both the bone marrow (BM) and spleen (62, 63). Depletion  
41 of CD169<sup>+</sup> macrophages using the CD169-DTR mouse model impaired recovery from hemolytic  
42 anemia and acute blood loss, and this was associated with a reduced number of EBIs and  
43 erythroblasts in bone marrow (66). In two models of acute RBC reduction, phenylhydrazine induced  
44 anemia and acute blood loss, a delay in hematocrit recovery was observed. There was also a delay in

1 the recovery of erythroblast numbers in myeloablation following BM transplant and following  
2 challenge with the myeloablative agent 5-fluorouracil (66).

3 One hallmark of stress erythropoiesis is the shift from erythropoiesis in the BM to extramedullary  
4 sites such as **the liver and spleen**, and the generation of stress erythroid progenitors (SEPs)(4, 67-69).  
5 During recovery from anemic stress, CCL2 production recruits monocytes to the spleen, where they  
6 associate with SEPs and differentiate into red pulp macrophages (RPM) creating new EBIs (70). In  
7 steady state conditions RPMs, a population of tissue resident macrophages, contribute to  
8 maintaining erythroid homeostasis by phagocytosing senescent erythrocytes, recycling iron and  
9 degrading heme (71). These RPMs have also been observed to form EBIs following transplantation  
10 and myeloablation (72). Splenic RPMs secrete BMP4 which is essential for the recovery of erythroid  
11 cells following a bone marrow transplant induced model of myeloablation (66). Splenic CD169<sup>+</sup>  
12 macrophage-depleted mice, which had impaired erythroblast recovery, expressed significantly less  
13 BMP4 and reciprocal transplantation studies identified splenic RPM as the source of this BMP4 (66).

### 14 **3.3.2. Macrophage depletion models in disease**

15 Macrophage depletion models have been used to implicate the macrophage compartment of the EBI  
16 niche in various RBC diseases. In a murine model of polycythemia vera (PCV), a disease in which  
17 there is excessive production of erythroid cells as a result of a point mutation in JAK2 (JAK2<sup>V617F</sup>),  
18 blood hematocrit was normalised following depletion of CD169<sup>+</sup> macrophages (66, 73, 74). Using the  
19 *Jak2*<sup>V617F/+</sup> murine model of PCV, researchers demonstrated that clodronate-mediated macrophage  
20 depletion also normalised RBC numbers (63, 75). **JAK2 is a component of the EpoR signalling  
21 cascade, and the results of these macrophage depletion studies imply that the hyperactive EpoR  
22 signalling caused by the JAK2<sup>V617F</sup> mutant protein within the macrophage compartment contributes  
23 to the disease phenotype in this model of PCV (74). The fact that the number of macrophages  
24 increase in response to EPO administration in control mice confirms that EpoR signalling is indeed  
25 active in macrophages as well as erythroid cells within the EBI (76) and this is further supported by  
26 the expansion of both erythrocytes and macrophages in mouse models of erythrocytosis (76).**

27 Macrophage depletion also improved the phenotype of a mouse model of  $\beta$ -thalassemia, with mice  
28 treated with clodronate exhibiting increased hemoglobin and RBC numbers (63, 77). Therefore,  
29 macrophages have been demonstrated to **influence** disease phenotypes by both increasing and  
30 decreasing RBC numbers.

31 **While macrophage depletion has been an effective method to elucidate the role of EBI macrophages  
32 in stress and disease erythropoiesis, having been demonstrated to deplete CD169<sup>+</sup> VCAM<sup>+</sup> EBI  
33 macrophages, EBI macrophages are not exclusively depleted (Table 1). It is unclear what  
34 contribution, if any, the depletion of other macrophage subsets has on erythropoiesis. Further  
35 studies to isolate and deplete only EBI macrophages are needed to fully elucidate their contribution  
36 to disease.**

### 37 **3.4. Genetically modified mouse models**

38 With the advent of gene editing technology, the role of specific genes in the EBI niche could be  
39 assessed *in vivo* using genetically modified mice (Table 1). Targeted deletion of genes hypothesised  
40 to have an important role in EBIs was used to strengthen observations made in previous *in vitro*  
41 studies. For example, antibody inhibition studies *in vitro* identified that ICAM-4, a member of the  
42 intercellular adhesion molecule family expressed in erythroid cells, binds to  $\alpha 4 \beta 1$  integrin and  $\alpha$   
43 integrins (78). The subsequent production of ICAM-4- null mice confirmed that its interaction with  
44  $\alpha$  integrins on macrophages is involved in maintaining EBI integrity (58). Islands were harvested

1 intact from ICAM-4-null mice or reconstituted *in vitro* and a significant decrease in reconstituted  
2 islands was observed in isolates from ICAM-4 null compared to WT mice, supporting the functional  
3 role of  $\alpha v$  integrin in EBI macrophages (58).

4 Targeted gene inactivation using a gene trapping approach confirmed the *in vivo* function of Emp  
5 (erythroblast-macrophage protein), which had been previously implicated as an important mediator  
6 of erythroblast-macrophage attachment *in vitro* (41, 79). Emp null embryos die shortly after birth  
7 and present with an increased number of nucleated, immature erythrocytes in their peripheral  
8 blood (80). The phenotype is especially stark in the fetal liver, where almost no EBIs were observed.  
9 Interestingly, control, wild type macrophages were still able to bind Emp-deficient erythroblasts but  
10 these erythroblasts failed to enucleate. Further insight into macrophage/erythroid interactions via  
11 Emp was gleaned from a macrophage-specific conditional gene deletion of *Emp* (*Maea*) that resulted  
12 in severely impaired EBI formation, whereas deletion in the erythroid lineage had no detrimental  
13 effect (81). Together, these studies indicate that Emp regulates the maintenance of macrophages  
14 and that Emp-mediated adhesion to erythroblasts must involve another currently unidentified  
15 receptor on erythroid cells (81).

16 Gene targeting studies in mice have also addressed the role of EBI macrophages in promoting  
17 enucleation via cell-cell attachments and in its function to phagocytose nuclei extruded from the  
18 erythroblasts. **Nuclei are extruded as 'pyrenocytes', small, nucleated cells with a cytoplasmic ring**  
19 **(9). Pyrenocytes** externalise phosphatidylserine providing a signal to macrophages for engulfment  
20 (47). The endonuclease DNaseII (Dnase2) in EBI macrophages destroys the nucleus expelled from  
21 erythroblasts as demonstrated in DNaseII-deficient mice, where undegraded DNA stimulates EBI  
22 macrophages to express IFN- $\beta$ , therefore inhibiting erythropoiesis (82). It was particularly  
23 interesting to note that expression of *Dnase2a* in EBI macrophages is regulated by KLF1 (7, 83), a  
24 transcription factor that was first identified as a master regulator within the erythroid lineage, **with**  
25 **an important role in regulating the later stages of RBC production including** globin switching to the  
26 activation of erythroid-specific genes (84-87). Adding to its critical intrinsic role, an extrinsic role for  
27 KLF1 in the macrophage compartment of the erythroblastic island niche was first implicated using a  
28 KLF1-eGFP reporter mouse strain where GFP was detected in EBI macrophages and genes associated  
29 with island integrity such as VCAM1 expressed at a higher in KLF1-GFP<sup>+</sup> macrophages (8, 88, 89).

30 Stress erythropoiesis has been shown to be particularly sensitive to modifications in the EBI niche,  
31 and mouse genetic models have also been used to assess the role of specific genes in that process  
32 (4). Steady state and stress erythropoiesis are thought to be regulated by different mechanisms with  
33 EBI macrophages being more strongly implicated under stress conditions. Growth-differentiation  
34 factor 15 (Gdf15), for example, is an essential regulator of stress, but not steady-state,  
35 erythropoiesis in both mice and humans (90, 91). *Gdf15*<sup>-/-</sup> mice exhibit a reduced expansion of the  
36 splenic stress erythroid niche from monocyte recruitment, resulting in an impaired proliferation of  
37 stress erythroid progenitors (SEPs)(91). It was demonstrated that Gdf15 signalling modulates Hif2 $\alpha$ -  
38 dependent expression of BMP4 in macrophages through Vhl inhibition, which in turn regulates SEP  
39 proliferation (91).

40 Characterisation of the Epo-eGFP knockin reporter mouse demonstrated that the majority of EBI  
41 macrophages express the Epo receptor, implying that Epo can act on both macrophages and  
42 erythroid cells (56). It was recently shown that Epo/Stat signalling in splenic EBI macrophages  
43 represses the Wnt signalling that promotes SEP proliferation so the end result of macrophage Epo  
44 signalling is the differentiation of SEPs into functionally mature RBCs (92).



1 Stress erythropoiesis can also be induced during inflammation, where bone marrow hematopoiesis  
2 favours the production of innate immune effector cells at the expense of RBC production (93).  
3 Inflammation induced anemia is common in patients with chronic inflammation, and several pro-  
4 inflammatory cytokines, such as TNF- $\alpha$  and IFN- $\gamma$ , have been shown to inhibit steady-state  
5 erythropoiesis (94-97). A recent study using a mouse model of sterile inflammation, demonstrated  
6 this inhibition is compensated by an increase in stress erythropoiesis. Signalling through Toll-like  
7 receptors (TLRs) stimulated the phagocytosis of erythrocytes by splenic macrophages, facilitating  
8 heme-dependent expression of the transcription factor SPI-C which in turn promoted the expression  
9 of both *Gdf15* and *Bmp4* that act to increase the proliferation of SEPs (98).

10 Could changes in the EBI niche contribute to RBC disorders as well as stress erythropoiesis, and if so,  
11 could modulation of the EBI niche be exploited to treat these RBC conditions? Experimental  
12 evidence in mouse models suggests that modulation of the EBI niche could be effective in treating  
13 RBC disorders. EPO, a hormone widely used to stimulate erythroblast production and maturation, is  
14 not always effective, with many anemic patients unresponsive to treatment (99, 100). Growth  
15 arrest-specific factor 6 (*Gas6*), a protein secreted by erythroblasts in response to EPO, enhances EPO  
16 signalling directly by activating the Akt survival pathway in erythroblasts, and indirectly by reducing  
17 the release of erythroid-inhibitory factors from macrophages in the EBI niche (101). In a *Gas6*<sup>-/-</sup>  
18 mouse model there is an increase in the expression of various cytokines known to inhibit  
19 erythropoiesis, for example IL-10, IL-13, and TNF- $\alpha$  (101). Thus, *Gas6* could be targeted as a  
20 potential therapeutic option that would act on both erythroblasts and EBI macrophages to promote  
21 erythropoiesis.

22 One major advantage of using genetic models is that, unlike *in vitro* models of the EBI niche, genetic  
23 models in mice has allowed for the dissection of the role of specific genes *in vivo*. However, they are  
24 much more expensive and complex than *in vitro* studies, and still may not accurately reflect the  
25 human system (Table 1).

#### 26 4. Modelling the Human EBI Niche

27 The mouse models described have all contributed significantly to our understanding but how closely  
28 this resembles the human EBI niche is unclear. Work so far has focussed on the EBI macrophage, a  
29 key cell type in promoting erythropoiesis, but this has not allowed for the investigation into the  
30 involvement of other cell types (Table 1). Human EBIs can be isolated from bone specimens resected  
31 during surgery, for example ribs during thoracic surgery, or from sectioned bone marrow (45).  
32 Sourcing this tissue however is extremely difficult. Thus, the majority of studies into the human EBI  
33 niche have relied on *in vitro* modelling, mainly using cells sourced from peripheral blood. Recently,  
34 components of the EBI niche have been derived from either pluripotent stem cells or CD34<sup>+</sup>  
35 hematopoietic progenitors and used to further characterise the human EBI niche (8).

#### 36 4.1. Hematopoietic progenitor cell-derived macrophages

37 Modelling of the human EBI niche has been possible using CD34<sup>+</sup>-hematopoietic stem and  
38 progenitor cells (HSPCs) that can differentiate into macrophages and erythroid cells. An *Mpl*-based  
39 Cell Growth Switch system was shown to drive macrophage-associated erythropoiesis and the  
40 macrophages produced in this system developed a phenotype similar to EBI macrophages; they  
41 expressed EMP, ICAM-4, CD163, DNASE2 and supported the maturation of erythroid cells to  
42 orthochromatic stage (102, 103).

43 The addition of the synthetic glucocorticoid, dexamethasone to differentiating CD34<sup>+</sup> HPCs has been  
44 particularly useful in modelling human stress erythropoiesis *in vitro* (104). As erythroid

1 differentiation is inhibited by dexamethasone, the consequential expansion of pro-erythroblasts  
2 mimics the stressed situation. Interestingly the small population of macrophages that are generated  
3 under these conditions (3% of total culture) interact with the expanding erythroblasts to form EBIs.  
4 The presence of dexamethasone promoted the maturation of CD169<sup>+</sup> macrophages (104), the cell  
5 phenotype that is known to promote erythropoiesis under stress conditions in murine models (66).  
6 Taken together, evidence suggests that the EBI macrophages involved in stress erythropoiesis are  
7 likely to be distinct from those in the steady state.

#### 8 **4.2. Monocyte-derived macrophages**

9 Peripheral blood mononuclear cells (PBMCs) have been used to demonstrate that macrophages can  
10 function as a ferritin iron source for cultured human erythroblasts to synthesise hemoglobin, a long-  
11 suspected role of EBI macrophages (44). *In vitro* modelling of the human EBI niche has been  
12 consistent with findings obtained in the murine system demonstrating that contact with  
13 macrophages promotes erythroblast proliferation. Co-culture of CD14<sup>+</sup> PBMC-derived intermediate  
14 monocytes/macrophages with CD34<sup>+</sup> progenitors enhanced erythropoiesis by supporting progenitor  
15 cell survival (105) and the addition of glucocorticoids induced the differentiation of monocytes to  
16 macrophages with an EBI-macrophage phenotype (106).

17 Not only does this modelling rely on the availability of monocyte-derived macrophages, it is  
18 important to note that different effects have been reported on maturation and enucleation (63,  
19 105). Furthermore, monocyte-derived macrophages may not accurately reflect the developmental  
20 ontogeny of EBI macrophages (107-110). To improve modelling of the human EBI *in vitro*,  
21 macrophages were derived from induced pluripotent stem cells (iPSCs) that can provide a limitless  
22 resource. iPSC-derived macrophages can be harvested repeatedly from cultures which greatly  
23 increases the yield of available macrophages compared to monocyte-derived (109, 111).  
24 Furthermore, iPSC-derived macrophages have been demonstrated to share ontogeny with *MYB*-  
25 independent tissue-resident macrophages, and while the exact developmental origins of EBI  
26 macrophages have not been determined, it is thought that they arise from yolk sac-derived EMPs,  
27 therefore sharing ontogeny with tissue-resident macrophages (108).

#### 28 **4.3. iPSC-derived macrophages**

29 iPSC-derived macrophages were shown to promote the maturation and enucleation of RBCs  
30 differentiating from CD34<sup>+</sup> hematopoietic progenitor cells in an *in vitro* model of the human EBI  
31 niche (8). A tamoxifen-ER<sup>T2</sup> expression system was used whereby the transcription factor KLF1 was  
32 expressed under the control of the constitutive CAG promoter and translocated to the nucleus upon  
33 addition of tamoxifen. Nuclear translocation and thus activation of KLF1 during the differentiation  
34 of iPSC-derived macrophages lead to the production of macrophages with an 'EBI macrophage' like  
35 phenotype. Macrophages expressing higher levels of KLF1 were better able to promote erythroblast  
36 maturation, resulting in an increase in enucleated RBCs in the culture (8). The use of this KLF1  
37 expression system therefore supported previous findings of an extrinsic role for KLF1 in EBI  
38 macrophages (8, 89).

39 The use of this unique *in vitro* model of the human EBI enabled the identification of KLF1-regulated  
40 genes encoding secreted factor including IL-33, SERPINB2, ANGPTL7, that were shown to be  
41 important for promoting erythropoiesis (8). Addition of all three of these cytokines to differentiating  
42 CD34<sup>+</sup> haematopoietic stem and progenitor cell cultures significantly increased the absolute number  
43 of mature, enucleated cells, with removal of individual cytokines resulting in an overall reduction in  
44 the number of mature enucleated cells. Removal of IL-33 resulted in the most significant reduction



1 in mature cells, but IL-33 alone did not improve maturation implying that it acts in synergy with the  
2 other factors (8). This study demonstrated that *in vitro* modelling of the EBI niche using iPSC-derived  
3 macrophages provides a powerful tool to identify and characterise novel factors and the key  
4 signalling and regulatory pathways involved in erythropoiesis. It will be possible to use this *in vitro*  
5 model in future to assess the effects of these novel factors as therapeutic options for patients with  
6 RBC disorders. For example, cytokines such as IL-33 could be investigated for their ability to promote  
7 RBC proliferation and maturation in anemic patients who do not respond to EPO treatment and  
8 small molecules to activate or block key signalling pathways could be tested as potential therapies  
9 (99, 100).

10 The ability to genetically engineer iPSCs and thus differentiated macrophages presents a promising  
11 approach to dissect the role of individual genes within the human EBI niche (112, 113). The wide  
12 array of genetic tools also allows for controlled temporal activation and knockout of specific genetic  
13 pathways. The tamoxifen-ER<sup>T2</sup> is particularly useful as it appears to recapitulate endogenous gene  
14 expression levels, avoiding very high, non-physiological expression levels often seen in standard  
15 transgenic or viral expression systems (8). The human iPSC-derived macrophage strategy also holds  
16 great potential in the context of RBC disorders, where pathogenic gene mutations can be introduced  
17 into EBI-like macrophages, to investigate whether genetic deficiencies in niche contribute to disease  
18 pathology.

19 *In vitro* modelling of the human EBI could also be used for patient-specific drug testing. This is  
20 especially useful for diseases in which animal models do not exactly recapitulate the disease. For  
21 example, the neonatal anemia, *nan* mouse carries a mutation (KLF1-E339D) homologous to the KLF1-  
22 E325K mutation that is observed in patients with type IV congenital dyserythropoietic anemia (CDA),  
23 but the phenotype is quite different (114, 115). Macrophages and RBCs differentiated from patient-  
24 derived iPSCs would allow for the *in vitro* modelling of EBIs in disease and could prove especially  
25 useful for dissecting the contributions of each cell type to disease pathology. Using an iPSC line  
26 derived from a CDA patient, it was shown that the KLF1-E325K mutation induces cell cycle arrest in  
27 differentiated erythroid cells (116). This was comparable to data derived from erythroid cells  
28 differentiated from patient-derived CD34+ progenitors where RNA-sequencing revealed the  
29 dysregulation of cell cycle genes (117). In future, the production of macrophages from this patient-  
30 derived iPSC line will elucidate whether the presence of the KLF1-E325K mutant protein in the EBI  
31 niche contributes to the pathology of the disease and will determine whether targeting the niche  
32 might be a therapeutic option.

## 33 5. Conclusion

34 The concept of the EBI has greatly progressed since it was first described by Bessis in 1958 with  
35 central macrophage functions, such as the role of cell-contact in promoting erythropoiesis, now well  
36 defined. *In vitro* models of the human and murine EBI, both intact and reconstituted, are relatively  
37 cheap and simple systems that have allowed for visual examination of the niche. Their simplicity  
38 however does not allow for dissection of the roles of individual genes, and in the human system  
39 sourcing primary tissue can be difficult (Table 1). While not possible in the human system,  
40 macrophage depletion and genetic models have been incredibly useful for understanding the role of  
41 individual genes within the mouse EBI niche. These genes are now beginning to be investigated in  
42 the human EBI niche, in which modelling using iPSC-derived macrophages now allows for the kinds  
43 of genetic manipulation employed to study the mouse system (Table 1).

44 The advances that have been made in modelling murine and human EBIs both *in vivo* and *in vitro*  
45 have great potential to be utilised to further examine the role of the EBI niche during stress

1 erythropoiesis and RBC disorders, especially by elucidating molecular mechanisms that could be  
2 targeted in their treatment. To recreate the EBI niche during stress erythropoiesis it will be  
3 interesting to assess whether iPSC-derived macrophages display the characteristics of splenic RPMs  
4 and if not, to devise culture conditions or genetic strategies to mimic their phenotype. The  
5 knowledge gained from the various models of the EBI niche could also aid in research to improve the  
6 production of functional RBCs from iPSC *in vitro* for clinical use. Blood transfusions, the most  
7 common treatment for RBC disorders, is reliant on donor supply and compatibility, and has side  
8 effects such as iron overload if patients require regular transfusions (118). Therefore, there is world-  
9 wide interest in the development of a donor-free supply of RBCs from a renewable source such as  
10 iPSCs. While significant progress has been made in this area, the strategy has not been successful in  
11 providing a stable source of enucleated RBCs that can be scaled up for therapeutic uses (119-123).

## 12 **Acknowledgements.**

13 Work in the author's laboratory is funded by the Medical Research Council (LF) and the Wellcome  
14 Trust (AM). We thank Niamh B McNamara for help with the graphics and Shyam Sushama and  
15 Antonella Fianza for critical comments on the manuscript. Figure 1 was created with  
16 BioRender.com

17

1 **Figure Legends**

2 **Figure 1. The role of EBI macrophages in erythropoiesis**

3

4 In healthy steady-state erythropoiesis, erythroblastic island macrophages support and promote  
5 erythropoiesis via membrane protein interactions, the secretion of factors, and by providing iron for  
6 heme synthesis. During terminal differentiation, EBI macrophages phagocytose nuclei extruded from  
7 differentiating erythroid cells with **DNase11 associated with its degradation**. In models of stress  
8 erythropoiesis, macrophage depletion led to the phagocytosis of mature RBCs by splenic red pulp  
9 macrophages, which increased expression of SPI-C, Gdf15 and Bmp4, resulting in an increase in the  
10 proliferation of stress erythroid progenitors. Macrophage depletion led to the normalisation of RBC  
11 numbers in disease models of polycythemia vera and  $\beta$ -thalassemia by decreasing and increasing red  
12 blood cells, respectively. **Macrophages associated with the EBI in the steady state (purple) are likely  
13 to be different from those in stress and diseased conditions (blue).**

14 (EBI, erythroblastic island; RBC, red blood cells; RPM, red pulp macrophages; SEPs, stress erythroid  
15 progenitors).

16

17 **Table 1. Model systems used to study the erythroblastic island niche**

18 Summary of the different mouse and human model systems used to study the erythroblastic island  
19 niche in erythropoiesis and their advantages and disadvantages. (EBI, erythroblastic island; **HSPC,**  
20 **hematopoietic stem/progenitor cells**; iPSC, induced pluripotent stem cells)

21

22

## 7. References

1. Bessis M. [Erythroblastic island, functional unity of bone marrow]. *Rev Hematol.* 1958;13(1):8-11.
2. Mohandas N, Prenant M. Three-dimensional model of bone marrow. *Blood.* 1978;51(4):633-43.
3. Sonoda Y, Sasaki K. Hepatic extramedullary hematopoiesis and macrophages in the adult mouse: histometrical and immunohistochemical studies. *Cells Tissues Organs.* 2012;196(6):555-64.
4. Paulson RF, Hariharan S, Little J. Stress erythropoiesis: definitions and models for its study. *Exp Hematol.* 2020.
5. Berman I. The ultrastructure of erythroblastic islands and reticular cells in mouse bone marrow. *J Ultrastruct Res.* 1967;17(3):291-313.
6. Bessis MC, Breton-Gorius J. Iron metabolism in the bone marrow as seen by electron microscopy: a critical review. *Blood.* 1962;19:635-63.
7. Porcu S, Manchinu MF, Marongiu MF, Sogos V, Poddie D, Asunis I, et al. Klf1 affects DNase II- $\alpha$  expression in the central macrophage of a fetal liver erythroblastic island: a non-cell-autonomous role in definitive erythropoiesis. *Mol Cell Biol.* 2011;31(19):4144-54.
8. Lopez-Yrigoyen M, Yang CT, Fidanza A, Cassetta L, Taylor AH, McCahill A, et al. Genetic programming of macrophages generates an in vitro model for the human erythroid island niche. *Nat Commun.* 2019;10(1):881.
9. McGrath KE, Kingsley PD, Koniski AD, Porter RL, Bushnell TP, Palis J. Eucleation of primitive erythroid cells generates a transient population of "pyrenocytes" in the mammalian fetus. *Blood.* 2008;111(4):2409-17.
10. Policard A, Bessis M. Micropinocytosis and rhopheocytosis. *Nature.* 1962;194:110-1.
11. Lo Celso C, Fleming HE, Wu JW, Zhao CX, Miake-Lye S, Fujisaki J, et al. Live-animal tracking of individual haematopoietic stem/progenitor cells in their niche. *Nature.* 2009;457(7225):92-6.
12. Sugiyama T, Kohara H, Noda M, Nagasawa T. Maintenance of the hematopoietic stem cell pool by CXCL12-CXCR4 chemokine signaling in bone marrow stromal cell niches. *Immunity.* 2006;25(6):977-88.
13. Kiel MJ, Yilmaz OH, Iwashita T, Terhorst C, Morrison SJ. SLAM family receptors distinguish hematopoietic stem and progenitor cells and reveal endothelial niches for stem cells. *Cell.* 2005;121(7):1109-21.
14. Morrison SJ, Scadden DT. The bone marrow niche for haematopoietic stem cells. *Nature.* 2014;505(7483):327-34.
15. Buttarello M. Laboratory diagnosis of anemia: are the old and new red cell parameters useful in classification and treatment, how? *Int J Lab Hematol.* 2016;38 Suppl 1:123-32.
16. McLean E, Cogswell M, Egli I, Wojdyla D, de Benoist B. Worldwide prevalence of anaemia, WHO Vitamin and Mineral Nutrition Information System, 1993-2005. *Public Health Nutr.* 2009;12(4):444-54.
17. Kassebaum NJ, Jasrasaria R, Naghavi M, Wulf SK, Johns N, Lozano R, et al. A systematic analysis of global anemia burden from 1990 to 2010. *Blood.* 2014;123(5):615-24.
18. Tefferi A, Barbui T. Polycythemia vera and essential thrombocythemia: 2019 update on diagnosis, risk-stratification and management. *Am J Hematol.* 2019;94(1):133-43.
19. Beutler E. Genetic disorders of human red blood cells. *Jama.* 1975;233(11):1184-8.
20. Socie G, Mary JY, de Gramont A, Rio B, Leporrier M, Rose C, et al. Paroxysmal nocturnal haemoglobinuria: long-term follow-up and prognostic factors. *French Society of Haematology. Lancet.* 1996;348(9027):573-7.
21. Muncie HL, Jr., Campbell J. Alpha and beta thalassemia. *Am Fam Physician.* 2009;80(4):339-44.
22. Williams TN, Thein SL. Sickle Cell Anemia and Its Phenotypes. *Annu Rev Genomics Hum Genet.* 2018;19:113-47.

- 1 23. Fibach E, Rachmilewitz EA. Pathophysiology and treatment of patients with beta-thalassemia  
2 - an update. *F1000Res*. 2017;6:2156.
- 3 24. Jimenez K, Kulnigg-Dabsch S, Gasche C. Management of Iron Deficiency Anemia.  
4 *Gastroenterol Hepatol (N Y)*. 2015;11(4):241-50.
- 5 25. Eschbach JW, Egrie JC, Downing MR, Browne JK, Adamson JW. Correction of the anemia of  
6 end-stage renal disease with recombinant human erythropoietin. Results of a combined phase I and  
7 II clinical trial. *N Engl J Med*. 1987;316(2):73-8.
- 8 26. Debeljak N, Sytkowski AJ. Erythropoietin and erythropoiesis stimulating agents. *Drug Test*  
9 *Anal*. 2012;4(11):805-12.
- 10 27. Glaspy J, Bukowski R, Steinberg D, Taylor C, Tchekmedyian S, Vadhan-Raj S. Impact of  
11 therapy with epoetin alfa on clinical outcomes in patients with nonmyeloid malignancies during  
12 cancer chemotherapy in community oncology practice. Procrit Study Group. *J Clin Oncol*.  
13 1997;15(3):1218-34.
- 14 28. Hillmen P, Young NS, Schubert J, Brodsky RA, Socie G, Muus P, et al. The complement  
15 inhibitor eculizumab in paroxysmal nocturnal hemoglobinuria. *N Engl J Med*. 2006;355(12):1233-43.
- 16 29. Debureaux P-E, Cacace F, Silva BGP, Barone F, Calado RT, Fontbrune FSd, et al.  
17 Hematological Response to Eculizumab in Paroxysmal Nocturnal Hemoglobinuria: Application of a  
18 Novel Classification to Identify Unmet Clinical Needs and Future Clinical Goals. *Blood*; 2019.
- 19 30. Saso R, Marsh J, Cevreska L, Szer J, Gale RP, Rowlings PA, et al. Bone marrow transplants for  
20 paroxysmal nocturnal haemoglobinuria. *Br J Haematol*. 1999;104(2):392-6.
- 21 31. Locasciulli A, Oneto R, Bacigalupo A, Socie G, Korthof E, Bekassy A, et al. Outcome of patients  
22 with acquired aplastic anemia given first line bone marrow transplantation or immunosuppressive  
23 treatment in the last decade: a report from the European Group for Blood and Marrow  
24 Transplantation (EBMT). *Haematologica*. 2007;92(1):11-8.
- 25 32. Mohty M, Apperley JF. Long-term physiological side effects after allogeneic bone marrow  
26 transplantation. *Hematology Am Soc Hematol Educ Program*. 2010;2010:229-36.
- 27 33. Edvardsson L, Dykes J, Olofsson T. Isolation and characterization of human myeloid  
28 progenitor populations--TpoR as discriminator between common myeloid and  
29 megakaryocyte/erythroid progenitors. *Exp Hematol*. 2006;34(5):599-609.
- 30 34. Akashi K, Traver D, Miyamoto T, Weissman IL. A clonogenic common myeloid progenitor that  
31 gives rise to all myeloid lineages. *Nature*. 2000;404(6774):193-7.
- 32 35. Gregory CJ, Eaves AC. Three stages of erythropoietic progenitor cell differentiation  
33 distinguished by a number of physical and biologic properties. *Blood*. 1978;51(3):527-37.
- 34 36. Gregory CJ, Eaves AC. Human marrow cells capable of erythropoietic differentiation in vitro:  
35 definition of three erythroid colony responses. *Blood*. 1977;49(6):855-64.
- 36 37. Granick S, Levere RD. HEME SYNTHESIS IN ERYTHROID CELLS. *Prog Hematol*. 1964;4:1-47.
- 37 38. Yeo JH, Lam YW, Fraser ST. Cellular dynamics of mammalian red blood cell production in the  
38 erythroblastic island niche. *Biophys Rev*. 2019;11(6):873-94.
- 39 39. Chasis JA, Prenant M, Leung A, Mohandas N. Membrane assembly and remodeling during  
40 reticulocyte maturation. *Blood*. 1989;74(3):1112-20.
- 41 40. Chen K, Liu J, Heck S, Chasis JA, An X, Mohandas N. Resolving the distinct stages in erythroid  
42 differentiation based on dynamic changes in membrane protein expression during erythropoiesis.  
43 *Proc Natl Acad Sci U S A*. 2009;106(41):17413-8.
- 44 41. Hanspal M, Hanspal JS. The association of erythroblasts with macrophages promotes  
45 erythroid proliferation and maturation: a 30-kD heparin-binding protein is involved in this contact.  
46 *Blood*. 1994;84(10):3494-504.
- 47 42. Rhodes MM, Kopsombut P, Bondurant MC, Price JO, Koury MJ. Adherence to macrophages  
48 in erythroblastic islands enhances erythroblast proliferation and increases erythrocyte production by  
49 a different mechanism than erythropoietin. *Blood*. 2008;111(3):1700-8.
- 50 43. Allen TD, Dexter TM. Ultrastructural aspects of erythropoietic differentiation in long-term  
51 bone marrow culture. *Differentiation*. 1982;21(2):86-94.

- 1 44. Leimberg MJ, Prus E, Konijn AM, Fibach E. Macrophages function as a ferritin iron source for  
2 cultured human erythroid precursors. *J Cell Biochem.* 2008;103(4):1211-8.
- 3 45. Lee SH, Crocker PR, Westaby S, Key N, Mason DY, Gordon S, et al. Isolation and  
4 immunocytochemical characterization of human bone marrow stromal macrophages in hemopoietic  
5 clusters. *J Exp Med.* 1988;168(3):1193-8.
- 6 46. Yokoyama T, Kitagawa H, Takeuchi T, Tsukahara S, Kannan Y. No apoptotic cell death of  
7 erythroid cells of erythroblastic islands in bone marrow of healthy rats. *J Vet Med Sci.*  
8 2002;64(10):913-9.
- 9 47. Yoshida H, Kawane K, Koike M, Mori Y, Uchiyama Y, Nagata S. Phosphatidylserine-dependent  
10 engulfment by macrophages of nuclei from erythroid precursor cells. *Nature.* 2005;437(7059):754-8.
- 11 48. Ganzoni A, Hillman RS, Finch CA. Maturation of the macroreticulocyte. *Br J Haematol.*  
12 1969;16(1):119-35.
- 13 49. Gronowicz G, Swift H, Steck TL. Maturation of the reticulocyte in vitro. *J Cell Sci.*  
14 1984;71:177-97.
- 15 50. Le Charpentier Y, Prenant M. [Isolation of erythroblastic islands. Study by optical and  
16 scanning electron microscopy (author's transl)]. *Nouv Rev Fr Hematol.* 1975;15(1):119-40.
- 17 51. Hume DA, Robinson AP, MacPherson GG, Gordon S. The mononuclear phagocyte system of  
18 the mouse defined by immunohistochemical localization of antigen F4/80. Relationship between  
19 macrophages, Langerhans cells, reticular cells, and dendritic cells in lymphoid and hematopoietic  
20 organs. *J Exp Med.* 1983;158(5):1522-36.
- 21 52. Yokoyama T, Etoh T, Kitagawa H, Tsukahara S, Kannan Y. Migration of erythroblastic islands  
22 toward the sinusoid as erythroid maturation proceeds in rat bone marrow. *J Vet Med Sci.*  
23 2003;65(4):449-52.
- 24 53. Crocker PR, Gordon S. Isolation and characterization of resident stromal macrophages and  
25 hematopoietic cell clusters from mouse bone marrow. *J Exp Med.* 1985;162(3):993-1014.
- 26 54. Seu KG, Papoin J, Fessler R, Hom J, Huang G, Mohandas N, et al. Unraveling Macrophage  
27 Heterogeneity in Erythroblastic Islands. *Front Immunol.* 2017;8:1140.
- 28 55. Sadahira Y, Yoshino T, Monobe Y. Very late activation antigen 4-vascular cell adhesion  
29 molecule 1 interaction is involved in the formation of erythroblastic islands. *J Exp Med.*  
30 1995;181(1):411-5.
- 31 56. Li W, Wang Y, Zhao H, Zhang H, Xu Y, Wang S, et al. Identification and transcriptome analysis  
32 of erythroblastic island macrophages. *Blood.* 2019;134(5):480-91.
- 33 57. Breton-Gorius J, Guichard J, Vainchenker W. Absence of erythroblastic islands in plasma clot  
34 culture and their possible reconstitution after clot lysis. *Blood Cells.* 1979;5(3):461-9.
- 35 58. Lee G, Lo A, Short SA, Mankelov TJ, Spring F, Parsons SF, et al. Targeted gene deletion  
36 demonstrates that the cell adhesion molecule ICAM-4 is critical for erythroblastic island formation.  
37 *Blood.* 2006;108(6):2064-71.
- 38 59. Liu XS, Li XH, Wang Y, Shu RZ, Wang L, Lu SY, et al. Disruption of palladin leads to defects in  
39 definitive erythropoiesis by interfering with erythroblastic island formation in mouse fetal liver.  
40 *Blood.* 2007;110(3):870-6.
- 41 60. Wang L, Yu H, Cheng H, He K, Fang Z, Ge L, et al. Deletion of Stk40 impairs definitive  
42 erythropoiesis in the mouse fetal liver. *Cell Death Dis.* 2017;8(3):e2722.
- 43 61. Weisser SB, van Rooijen N, Sly LM. Depletion and reconstitution of macrophages in mice. *J*  
44 *Vis Exp.* 2012(66):4105.
- 45 62. Van Rooijen N, Sanders A. Liposome mediated depletion of macrophages: mechanism of  
46 action, preparation of liposomes and applications. *J Immunol Methods.* 1994;174(1-2):83-93.
- 47 63. Ramos P, Casu C, Gardenghi S, Breda L, Crielaard BJ, Guy E, et al. Macrophages support  
48 pathological erythropoiesis in polycythemia vera and beta-thalassemia. *Nat Med.* 2013;19(4):437-45.
- 49 64. Miyake Y, Asano K, Kaise H, Uemura M, Nakayama M, Tanaka M. Critical role of  
50 macrophages in the marginal zone in the suppression of immune responses to apoptotic cell-  
51 associated antigens. *J Clin Invest.* 2007;117(8):2268-78.

- 1 65. Inra CN, Zhou BO, Acar M, Murphy MM, Richardson J, Zhao Z, et al. A perisinusoidal niche for  
2 extramedullary haematopoiesis in the spleen. *Nature*. 2015;527(7579):466-71.
- 3 66. Chow A, Huggins M, Ahmed J, Hashimoto D, Lucas D, Kunisaki Y, et al. CD169(+)  
4 macrophages provide a niche promoting erythropoiesis under homeostasis and stress. *Nat Med*.  
5 2013;19(4):429-36.
- 6 67. Harandi OF, Hedge S, Wu DC, McKeone D, Paulson RF. Murine erythroid short-term  
7 radioprotection requires a BMP4-dependent, self-renewing population of stress erythroid  
8 progenitors. *J Clin Invest*. 2010;120(12):4507-19.
- 9 68. Lenox LE, Perry JM, Paulson RF. Extramedullary Erythropoiesis in the Adult Liver Requires  
10 BMP-4/Smad5-dependent Signaling. *Blood*. 2005;105(7):2741-8.
- 11 69. Porayette P, Paulson RF. BMP4/Smad5 dependent stress erythropoiesis is required for the  
12 expansion of erythroid progenitors during fetal development. *Dev Biol*. 2008;317(1):24-35.
- 13 70. Liao C, Prabhu KS, Paulson RF. Monocyte-derived macrophages expand the murine stress  
14 erythropoietic niche during the recovery from anemia. *Blood*. 2018;132(24):2580-93.
- 15 71. Hentze MW, Muckenthaler MU, Andrews NC. Balancing acts: molecular control of  
16 mammalian iron metabolism. *Cell*. 2004;117(3):285-97.
- 17 72. Sadahira Y, Mori M, Kimoto T. Participation of radioresistant Forssman antigen-bearing  
18 macrophages in the formation of stromal elements of erythroid spleen colonies. *Br J Haematol*.  
19 1989;71(4):469-74.
- 20 73. Zhan H, Spivak JL. The diagnosis and management of polycythemia vera, essential  
21 thrombocythemia, and primary myelofibrosis in the JAK2 V617F era. *Clin Adv Hematol Oncol*.  
22 2009;7(5):334-42.
- 23 74. Zhao R, Xing S, Li Z, Fu X, Li Q, Krantz SB, et al. Identification of an acquired JAK2 mutation in  
24 polycythemia vera. *J Biol Chem*. 2005;280(24):22788-92.
- 25 75. Mullally A, Lane SW, Ball B, Megerdichian C, Okabe R, Al-Shahrour F, et al. Physiological  
26 Jak2V617F expression causes a lethal myeloproliferative neoplasm with differential effects on  
27 hematopoietic stem and progenitor cells. *Cancer Cell*. 2010;17(6):584-96.
- 28 76. Wang J, Hayashi Y, Yokota A, Xu Z, Zhang Y, Huang R, et al. Expansion of EPOR-negative  
29 macrophages besides erythroblasts by elevated EPOR signaling in erythrocytosis mouse models.  
30 *Haematologica*. 2018;103(1):40-50.
- 31 77. Ciavatta DJ, Ryan TM, Farmer SC, Townes TM. Mouse model of human beta zero  
32 thalassemia: targeted deletion of the mouse beta maj- and beta min-globin genes in embryonic stem  
33 cells. *Proc Natl Acad Sci U S A*. 1995;92(20):9259-63.
- 34 78. Spring FA, Parsons SF, Orltepp S, Olsson ML, Sessions R, Brady RL, et al. Intercellular  
35 adhesion molecule-4 binds alpha(4)beta(1) and alpha(V)-family integrins through novel integrin-  
36 binding mechanisms. *Blood*. 2001;98(2):458-66.
- 37 79. Hanspal M, Smockova Y, Uong Q. Molecular identification and functional characterization of  
38 a novel protein that mediates the attachment of erythroblasts to macrophages. *Blood*.  
39 1998;92(8):2940-50.
- 40 80. Soni S, Bala S, Gwynn B, Sahr KE, Peters LL, Hanspal M. Absence of erythroblast macrophage  
41 protein (Emp) leads to failure of erythroblast nuclear extrusion. *J Biol Chem*. 2006;281(29):20181-9.
- 42 81. Wei Q, Boulais PE, Zhang D, Pinho S, Tanaka M, Frenette PS. Maa expressed by  
43 macrophages, but not erythroblasts, maintains postnatal murine bone marrow erythroblastic  
44 islands. *Blood*. 2019;133(11):1222-32.
- 45 82. Yoshida H, Okabe Y, Kawane K, Fukuyama H, Nagata S. Lethal anemia caused by interferon-  
46 beta produced in mouse embryos carrying undigested DNA. *Nat Immunol*. 2005;6(1):49-56.
- 47 83. Kawane K, Fukuyama H, Kondoh G, Takeda J, Ohsawa Y, Uchiyama Y, et al. Requirement of  
48 DNase II for definitive erythropoiesis in the mouse fetal liver. *Science*. 2001;292(5521):1546-9.
- 49 84. Miller IJ, Bieker JJ. A novel, erythroid cell-specific murine transcription factor that binds to  
50 the CACCC element and is related to the Kruppel family of nuclear proteins. *Mol Cell Biol*.  
51 1993;13(5):2776-86.

- 1 85. Funnell AP, Maloney CA, Thompson LJ, Keys J, Tallack M, Perkins AC, et al. Erythroid Kruppel-  
2 like factor directly activates the basic Kruppel-like factor gene in erythroid cells. *Mol Cell Biol.*  
3 2007;27(7):2777-90.
- 4 86. Chen X, Bieker JJ. Erythroid Kruppel-like factor (EKLF) contains a multifunctional  
5 transcriptional activation domain important for inter- and intramolecular interactions. *Embo j.*  
6 1996;15(21):5888-96.
- 7 87. Tallack MR, Whittington T, Yuen WS, Wainwright EN, Keys JR, Gardiner BB, et al. A global role  
8 for KLF1 in erythropoiesis revealed by ChIP-seq in primary erythroid cells. *Genome Res.*  
9 2010;20(8):1052-63.
- 10 88. Siatecka M, Bieker JJ. The multifunctional role of EKLF/KLF1 during erythropoiesis. *Blood.*  
11 2011;118(8):2044-54.
- 12 89. Xue L, Galdass M, Gnanapragasam MN, Manwani D, Bieker JJ. Extrinsic and intrinsic control  
13 by EKLF (KLF1) within a specialized erythroid niche. *Development.* 2014;141(11):2245-54.
- 14 90. Xiang J, Wu DC, Chen Y, Paulson RF. In vitro culture of stress erythroid progenitors identifies  
15 distinct progenitor populations and analogous human progenitors. *Blood.* 2015;125(11):1803-12.
- 16 91. Hao S, Xiang J, Wu DC, Fraser JW, Ruan B, Cai J, et al. Gdf15 regulates murine stress  
17 erythroid progenitor proliferation and the development of the stress erythropoiesis niche. *Blood*  
18 *Adv.* 2019;3(14):2205-17.
- 19 92. Chen Y, Xiang J, Qian F, Diwakar BT, Ruan B, Hao S, et al. Epo receptor signaling in  
20 macrophages alters the splenic niche to promote erythroid differentiation. *Blood.* 2020;136(2):235-  
21 46.
- 22 93. Jurado RL. Iron, infections, and anemia of inflammation. *Clin Infect Dis.* 1997;25(4):888-95.
- 23 94. Nemeth E, Ganz T. Anemia of inflammation. *Hematol Oncol Clin North Am.* 2014;28(4):671-  
24 81, vi.
- 25 95. Libregts SF, Gutiérrez L, de Bruin AM, Wensveen FM, Papadopoulos P, van Ijcken W, et al.  
26 Chronic IFN- $\gamma$  production in mice induces anemia by reducing erythrocyte life span and inhibiting  
27 erythropoiesis through an IRF-1/PU.1 axis. *Blood.* 2011;118(9):2578-88.
- 28 96. Rusten LS, Jacobsen SE. Tumor necrosis factor (TNF)-alpha directly inhibits human  
29 erythropoiesis in vitro: role of p55 and p75 TNF receptors. *Blood.* 1995;85(4):989-96.
- 30 97. Schooley JC, Kullgren B, Allison AC. Inhibition by interleukin-1 of the action of erythropoietin  
31 on erythroid precursors and its possible role in the pathogenesis of hypoplastic anaemias. *Br J*  
32 *Haematol.* 1987;67(1):11-7.
- 33 98. Bennett LF, Liao C, Quickel MD, Yeoh BS, Vijay-Kumar M, Hankey-Giblin P, et al.  
34 Inflammation induces stress erythropoiesis through heme-dependent activation of SPI-C. *Sci Signal.*  
35 2019;12(598).
- 36 99. Richmond TD, Chohan M, Barber DL. Turning cells red: signal transduction mediated by  
37 erythropoietin. *Trends Cell Biol.* 2005;15(3):146-55.
- 38 100. Lacombe C. Resistance to erythropoietin. *N Engl J Med.* 1996;334(10):660-2.
- 39 101. Angelillo-Scherrer A, Burnier L, Lambrechts D, Fish RJ, Tjwa M, Plaisance S, et al. Role of Gas6  
40 in erythropoiesis and anemia in mice. *J Clin Invest.* 2008;118(2):583-96.
- 41 102. Belay E, Hayes BJ, Blau CA, Torok-Storb B. Human Cord Blood and Bone Marrow CD34+ Cells  
42 Generate Macrophages That Support Erythroid Islands. *PLoS One.* 2017;12(1):e0171096.
- 43 103. Belay E, Miller CP, Kortum AN, Torok-Storb B, Blau CA, Emery DW. A hyperactive Mpl-based  
44 cell growth switch drives macrophage-associated erythropoiesis through an erythroid-  
45 megakaryocytic precursor. *Blood.* 2015;125(6):1025-33.
- 46 104. Falchi M, Varricchio L, Martelli F, Masiello F, Federici G, Zingariello M, et al. Dexamethasone  
47 targeted directly to macrophages induces macrophage niches that promote erythroid expansion.  
48 *Haematologica.* 2015;100(2):178-87.
- 49 105. Heideveld E, Masiello F, Marra M, Esteghamat F, Yagci N, von Lindern M, et al. CD14+ cells  
50 from peripheral blood positively regulate hematopoietic stem and progenitor cell survival resulting  
51 in increased erythroid yield. *Haematologica.* 2015;100(11):1396-406.



- 1 106. Heideveld E, Hampton-O'Neil LA, Cross SJ, van Alphen FPJ, van den Biggelaar M, Toye AM, et al. Glucocorticoids induce differentiation of monocytes towards macrophages that share functional  
2 and phenotypical aspects with erythroblastic island macrophages. *Haematologica*. 2018;103(3):395-  
3 405.
- 4 107. Alasoo K, Martinez FO, Hale C, Gordon S, Powrie F, Dougan G, et al. Transcriptional profiling  
5 of macrophages derived from monocytes and iPS cells identifies a conserved response to LPS and  
6 novel alternative transcription. *Sci Rep*. 2015;5:12524.
- 7 108. Buchrieser J, James W, Moore MD. Human Induced Pluripotent Stem Cell-Derived  
8 Macrophages Share Ontogeny with MYB-Independent Tissue-Resident Macrophages. *Stem Cell*  
9 *Reports*. 2017;8(2):334-45.
- 10 109. Haideri SS, McKinnon AC, Taylor AH, Kirkwood P, Starkey Lewis PJ, O'Duibhir E, et al.  
11 Injection of embryonic stem cell derived macrophages ameliorates fibrosis in a murine model of liver  
12 injury. *NPJ Regen Med*. 2017;2:14.
- 13 110. Heideveld E, van den Akker E. Digesting the role of bone marrow macrophages on  
14 hematopoiesis. *Immunobiology*. 2017;222(6):814-22.
- 15 111. Lopez-Yrigoyen M, Fidanza A, Cassetta L, Axton RA, Taylor AH, Meseguer-Ripolles J, et al. A  
16 human iPSC line capable of differentiating into functional macrophages expressing ZsGreen: a tool  
17 for the study and in vivo tracking of therapeutic cells. *Philos Trans R Soc Lond B Biol Sci*.  
18 2018;373(1750).
- 19 112. Hockmeyer D, Jaenisch R. Induced Pluripotent Stem Cells Meet Genome Editing. *Cell Stem*  
20 *Cell*. 2016;18(5):573-86.
- 21 113. Chang CY, Ting HC, Su HL, Jeng JR. Combining Induced Pluripotent Stem Cells and Genome  
22 Editing Technologies for Clinical Applications. *Cell Transplant*. 2018;27(3):379-92.
- 23 114. Siatecka M, Sahr KE, Andersen SG, Mezei M, Bieker JJ, Peters LL. Severe anemia in the Nan  
24 mutant mouse caused by sequence-selective disruption of erythroid Kruppel-like factor. *Proc Natl*  
25 *Acad Sci U S A*. 2010;107(34):15151-6.
- 26 115. Arnaud L, Saison C, Helias V, Lucien N, Steschenko D, Giarratana MC, et al. A dominant  
27 mutation in the gene encoding the erythroid transcription factor KLF1 causes a congenital  
28 dyserythropoietic anemia. *Am J Hum Genet*. 2010;87(5):721-7.
- 29 116. Kohara H, Utsugisawa T, Sakamoto C, Hirose L, Ogawa Y, Ogura H, et al. KLF1 mutation  
30 E325K induces cell cycle arrest in erythroid cells differentiated from congenital dyserythropoietic  
31 anemia patient-specific induced pluripotent stem cells. *Exp Hematol*. 2019;73:25-37.e8.
- 32 117. Varricchio L, Planutis A, Manwani D, Jaffray J, Mitchell WB, Migliaccio AR, et al. Genetic  
33 disarray follows mutant KLF1-E325K expression in a congenital dyserythropoietic anemia patient.  
34 *Haematologica*. 2019;104(12):2372-80.
- 35 118. Mercuriali F, Inghilleri G. Transfusion risks and limitations. *Minerva Anestesiol*.  
36 1999;65(5):286-92.
- 37 119. Jackson M, Ma R, Taylor AH, Axton RA, Easterbrook J, Kydonaki M, et al. Enforced Expression  
38 of HOXB4 in Human Embryonic Stem Cells Enhances the Production of Hematopoietic Progenitors  
39 but Has No Effect on the Maturation of Red Blood Cells. *Stem Cells Transl Med*. 2016;5(8):981-90.
- 40 120. Lapillonne H, Kobari L, Mazurier C, Tropel P, Giarratana MC, Zanella-Cleon I, et al. Red blood  
41 cell generation from human induced pluripotent stem cells: perspectives for transfusion medicine.  
42 *Haematologica*. 2010;95(10):1651-9.
- 43 121. Qiu C, Hanson E, Olivier E, Inada M, Kaufman DS, Gupta S, et al. Differentiation of human  
44 embryonic stem cells into hematopoietic cells by coculture with human fetal liver cells recapitulates  
45 the globin switch that occurs early in development. *Exp Hematol*. 2005;33(12):1450-8.
- 46 122. Kobari L, Yates F, Oudrhiri N, Francina A, Kiger L, Mazurier C, et al. Human induced  
47 pluripotent stem cells can reach complete terminal maturation: in vivo and in vitro evidence in the  
48 erythropoietic differentiation model. *Haematologica*. 2012;97(12):1795-803.
- 49

1 123. Yang CT, French A, Goh PA, Pagnamenta A, Mettananda S, Taylor J, et al. Human induced  
2 pluripotent stem cell derived erythroblasts can undergo definitive erythropoiesis and co-express  
3 gamma and beta globins. *Br J Haematol.* 2014;166(3):435-48.

4

May & Forrester (Ms. No. 20-179): Response to Reviewers

Reviewer #1:

1. Information by microscopy or even by FACS analyses of in vitro reconstituted islands are static and give the wrong impression that the island represents a stably associated structure. Macrophages, however, are very motile cells and in vitro time laps studies indicate that instead the island may be a dynamic structure possibly involving with time different cell populations. This dynamism may explain why some investigators are really skeptic that the island even exist.

***We had included a reference that describes the migration of EIs (ref 52) but to emphasise this point we have now added a sentence to make it clear that the EBI is dynamic (Page 3, lines 38-41).***

2. The review gives the impression that the same macrophages are involved in the formation of the erythroblast islands in steady state and in stress erythropoiesis. This may not be true. The macrophage that support CD34 survival derives from monocytes differentiated in culture. By contrast, the macrophages generated in cultures stimulated with dexamethasone that promote erythroblast proliferation likely derive from the stress erythroid progenitor cells which are generated in response to this hormone. These macrophages are likely to be stress specific because are not generated in cultures which do not contain dexamethasone (see Falchi et al, Haematologica. 2015 Feb;100(2):178-87. This paper inspired refs, 102). The fact that stress macrophages derive from the stress-specific erythroid progenitors explain their unique dependence on KLF1.

***We have now added a separate section (Section 4.1) on CD34+ HPC-derived macrophages and the effect of glucocorticoids on their phenotype, citing the Falchi et al paper (ref 104) (Pages 7-8, lines 37-44 and 1-7). We have added a clear statement that EBI macrophages involved in stress erythropoiesis are likely to be distinct from those in the steady state. (Page 8, lines 6-7).***

3. The Figure is good and clearly summarize the main concepts of the review. I suggest to modify the Figure to avoid the impression that the macrophage contained in the erythroblastic island under steady state and stress/disease conditions is the same, which is probably not true. The niche involved in stress erythropoiesis is induced by glucocorticoids. In addition, I would spell out some of the factors that mediate the interaction between the macrophages and the erythroid cells in the various niches.

***We have changed the colour of macrophages in Figure 1 to reflect the fact that macrophages in EI islands under steady state and stress/disease are likely to be different and modified the figure legend accordingly. We have added a new section on CD34+ HPC-derived macrophages where the addition of glucocorticoids mimicked stress conditions and make it clear that that EBI in steady state and stress conditions are different (Pages 7-8, lines 37-44 and 1-7). We have altered Figure 2 to include some of the specific membrane proteins that likely mediate the interaction between macrophages and erythroid cells under steady state conditions and we had added DNaseII within the macrophage which is involved in the degradation of the extruded nuclei (modified Figure 1).***

Minor comments

***We apologise for not including page and line numbers in the original manuscript. These are now included and we use these in our response for ease of referral.***

- "completely ablates the hematopoietic system". Please change the sentence into "ablates the hematopoiesis of the host". After preconditioning, the resident macrophages in the bone marrow remain those of the host (Awaya et al Exp Hematol. 2002 Aug;30(8):937-42. doi: 10.1016/s0301-472x(02)00821-4).

***We have altered the wording (Page 2, line 39)***

- "such as the fetal liver and spleen". Since the authors talk about stress erythropoiesis in adult animals, they probably mean "such as the liver and spleen".

***This mistake is corrected (Page 5, line 4).***

- How an enhanced EPO receptor signaling via JAK2 may expand macrophages in polycythemia vera is not immediately clear. Do we know whether the resident macrophages in the bone marrow derive from the PV stem cell clone? This part needs to be clarified.

***We have reworded this section to hopefully clarify the fact that hyperactivity of the EpoR signalling within the macrophage compartment is thought to contribute to the disease phenotype (Page 5, lines 20-26)***

- The role of KLF1 in erythropoiesis should be better detailed/ made more precise. It is the last phase of terminal maturation (membrane-specific genes, nuclear condensation, etc) that is uniquely KLF1-dependent. The first part is mostly GATA1-dependent.

***We have reworded this sentence to address the reviewer's point to "KLF1....with an important role in regulating the later stages of RBC production" (Page 6, line 24/25)***

- "Prenocytes" should be pyrenocytes, In addition, this section requires some modification. Pyrenocytes are not naked nuclei extruded by the cell but real cells with a cytoplasmic rim generated by the last asymmetric division of terminal maturation. Since terminal maturation destroys the cellular cytoskeleton linking the nuclear and the plasma membrane and the mitosis motors, the two daughter cells must rely on physical contacts established by the pyrenocyte with the macrophage to provide the polarity force necessary to trigger their separation.

***We apologise for the spelling error and have corrected this to pyrenocytes, we have added a description to clarify what they are and added a reference (9). (Page 6, lines 18/19)***

- Reference 4 (Paulson of 2011) should be replaced by the most recent review published by Paulson in Experimental Hematology in the last few months.

***We thank the reviewer for alerting us to this reference and we have replaced ref 4 with this more recent review.***

- Reference 18 is a review on PV by Tefferi of 2003. This reference should also be replaced by anyone of the more recent reviews on the subject.

***We have replaced ref 18 with an updated 2019 review by the same author.***

- Reference 112. Whether results published by Kohara with patient-derived iPSC are similar to those published by Varricchio et al using patient-specific erythroblasts differentiated in vitro should be discussed (Haematologica. 2019 Dec;104(12):2372-2380).

***We have now included and cited the data described by Varricchio et al and note the similarities in the data generated from iPSC-derived erythroid cells and the patient CD34+ progenitor-derived cells described in that paper (Page 9, lines 27-29).***

- For completeness, it is suggested to mention the contribution to the field of the Torok-Storb laboratory (Belay E et al PLoS One. 2017 Jan 30;12(1):e0171096, Pillai et al Exp Hematol. 2009 Dec;37(12):1387-92 and Belay et al Blood. 2015 Feb 5;125(6):1025-33.

***We have now included and cited the work from this group (refs 102 and 103)(Page 7, lines 37-42). This is now included as part of a separate section on the generation of EBI macrophages from CD34+ hematopoietic progenitor cells and we have added this as a separate model in Table 1.***

Reviewer #2:

1) The concept of EBI has greatly evolved since its inception several decades ago. Although the phagocytic activity of macrophages for processing the effete RBCs, or the pyrenocytes and supplying iron to the developing Erythroid cells were well accepted, other functions attributed to macrophages, i.e. on the proliferation, on survival and terminal differentiation of erythroid cells were ill defined. In vitro experiments suggested contact dependent functions and these findings were supported by the results of antibody treatments. In vivo experiments addressed the dominant contribution of macrophages to stress responses, through Clodronate use (= a bomb with a lot of collateral damage), whereas the exact surface phenotype was constantly under revision. Along the way there were conflicting results, especially for some prior important players, i.e. Spi-C, or VCAM-1 or newer deletions of EMP in only erythroid cells or only in macrophages. Further, recently contact-independent functions of macrophages were emphasized through several secreted proteins. The current review cites all the authors prior conclusions, but needs a more critical evaluation of the findings.

***We have now added text to the end of each section that includes a more critical evaluation of the models that are discussed (Page 4, lines 22-25; Page 5, lines 33-36) and included a section at the start of our conclusions (Page 7, lines 22-25).***

2) The contribution, especially to stress erythropoiesis, of microenvironmental (ME) cells other than macrophages, i.e. endothelial cells, perivascular cells (secretion of SCF), dendritic cells, or the erythroid cells themselves, is insufficiently acknowledged. Upon high Epo stimulation erythroid cells release several molecules (Gas 6, VEGF, PlGF, GDF11) with paracrine effects on macrophages. Epo also elicits responses from macrophages, as indicated recently (the presence of Epo mRNA in macrophages was first reported in 1988!). So macrophages participate in a well coordinated response by many other cell types. Please add this.

***We have added a sentence at the beginning of the macrophage depletion models in stress erythropoiesis section that addresses this point (Page 4 lines 34-37)***

3) The review is subdivided into too many subchapters; i.e Clodronate use in normal in one and clodronate use in PV or Thal mice in another. Also on human EBIs, the monocyte-derived or iPSC-derived do not deserve a separate subchapter.

***As our review is focussing on the different model systems that have been used to study the EBI, we believe it is important to define each model in a separately titled section.***

Minor:

Ref #91 is incomplete and includes a wrong composition of authors.

***Apologies, this reference is now complete***

Species	Model	Advantages	Disadvantages	References
Mouse	Imaging and isolation of intact EBIs	<ul style="list-style-type: none"> <li>• Visual</li> </ul>	<ul style="list-style-type: none"> <li>• Static system</li> </ul>	1, 2, 50
Mouse	Reconstitution of islands <i>in vitro</i>	<ul style="list-style-type: none"> <li>• Allows the study of direct cell-cell interactions in a dynamic manner.</li> <li>• Cheap and simple</li> </ul>	<ul style="list-style-type: none"> <li>• not possible to investigate possible interactions with other cell types</li> </ul>	42, 55, 57, 58, 59, 60
Mouse	Macrophage depletion <i>in vivo</i> (eg. clodronate)	<ul style="list-style-type: none"> <li>• Easy to administer</li> <li>• Can be performed on different genetic models</li> </ul>	<ul style="list-style-type: none"> <li>• Broad macrophage depletion</li> </ul>	63, 65
Mouse	Genetic models (eg lineage-specific knockout and depletion)	<ul style="list-style-type: none"> <li>• Allows for dissection of the role of specific cell populations and genes <i>in vivo</i>.</li> </ul>	<ul style="list-style-type: none"> <li>• Costly</li> <li>• Complex</li> </ul>	56, 58, 74, 77, 79, 80, 81, 83, 90, 100
Human	Imaging and isolation of intact EBIs	<ul style="list-style-type: none"> <li>• Visual</li> </ul>	<ul style="list-style-type: none"> <li>• Static system</li> <li>• Difficult to obtain primary tissue</li> </ul>	45
Human	Reconstitution of EBIs <i>in vitro</i> using HSPC-derived cells.	<ul style="list-style-type: none"> <li>• Macrophage/erythroid interactions can be studied.</li> <li>• Relatively cheap and simple system</li> <li>• Macrophages and erythroid cells differentiate in concert</li> </ul>	<ul style="list-style-type: none"> <li>• Reliant on repeated donations</li> <li>• Does not investigate involvement of other cell types.</li> </ul>	102,103,104
Human	Reconstitution of EBIs <i>in vitro</i> using monocyte-derived macrophages	<ul style="list-style-type: none"> <li>• Macrophage/erythroid interactions can be studied.</li> <li>• Relatively cheap and simple system</li> </ul>	<ul style="list-style-type: none"> <li>• Not conducive to genetic manipulation</li> <li>• Reliant on repeated donations</li> </ul>	44, 105, 106
Human	Reconstitution of EBIs <i>in vitro</i> using iPSCs-derived macrophages	<ul style="list-style-type: none"> <li>• Macrophage/erythroid interactions can be studied</li> <li>• Relatively cheap and simple</li> <li>• Limitless resource</li> <li>• Genetically manipulatable</li> <li>• Disease-specific modelling possible</li> </ul>	<ul style="list-style-type: none"> <li>• May not completely recapitulate <i>in vivo</i> EBIs</li> </ul>	8

**Table 1. Model systems used to study the erythroblastic island niche**

Summary of the different mouse and human model systems used to study the erythroblastic island niche in erythropoiesis and their advantages and disadvantages. (EBI, erythroblastic island; HSPC, hematopoietic stem/progenitor cells; iPSC, induced pluripotent stem cells)

