



THE UNIVERSITY *of* EDINBURGH

Edinburgh Research Explorer

Risk prediction of late-onset Alzheimer's disease implies an oligogenic architecture

Citation for published version:

Zhang, Q, Sidorenko, J, Couvy-Duchesne, B, Marioni, RE, Wright, MJ, Goate, AM, Marcora, E, Huang, K, Porter, T, Laws, S, Sachdev, PS, Mather, KA, Armstrong, NJ, Thalamuthu, A, Brodaty, H, Yengo, L, Yang, J, Wray, NR, Mcrae, AF & Visscher, PM 2020, 'Risk prediction of late-onset Alzheimer's disease implies an oligogenic architecture', *Nature Communications*. <https://doi.org/10.1038/s41467-020-18534-1>

Digital Object Identifier (DOI):

[10.1038/s41467-020-18534-1](https://doi.org/10.1038/s41467-020-18534-1)

Link:

[Link to publication record in Edinburgh Research Explorer](#)

Document Version:

Publisher's PDF, also known as Version of record

Published In:

Nature Communications

Publisher Rights Statement:

Open Access This article is licensed under a Creative Commons Attribution 4.0 International License, which permits use, sharing, adaptation, distribution and reproduction in any medium or format, as long as you give appropriate credit to the original author(s) and the source, provide a link to the Creative Commons license, and indicate if changes were made. The images or other third party material in this article are included in the article's Creative Commons license, unless indicated otherwise in a credit line to the material. If material is not included in the article's Creative Commons license and your intended use is not permitted by statutory regulation or exceeds the permitted use, you will need to obtain permission directly from the copyright holder. To view a copy of this license, visit <http://creativecommons.org/licenses/by/4.0/>.

General rights












Copyright for the publications made accessible via the Edinburgh Research Explorer is retained by the author(s) and / or other copyright owners and it is a condition of accessing these publications that users recognise and abide by the legal requirements associated with these rights.

Take down policy

The University of Edinburgh has made every reasonable effort to ensure that Edinburgh Research Explorer content complies with UK legislation. If you believe that the public display of this file breaches copyright please contact openaccess@ed.ac.uk providing details, and we will remove access to the work immediately and investigate your claim.



Risk prediction of late-onset Alzheimer's disease implies an oligogenic architecture

Qian Zhang¹, Julia Sidorenko ¹, Baptiste Couvy-Duchesne¹, Riccardo E. Marioni², Margaret J. Wright ^{3,4}, Alison M. Goate ^{5,6}, Edoardo Marcora ^{5,6}, Kuan-lin Huang ^{5,6}, Tenielle Porter⁷, Simon M. Laws ^{7,8}, & Australian Imaging Biomarkers and Lifestyle (AIBL) Study*, Perminder S. Sachdev ^{9,10}, Karen A. Mather^{9,11}, Nicola J. Armstrong¹², Anbupalam Thalamuthu^{9,11}, Henry Brodaty ^{9,13}, Loic Yengo¹, Jian Yang ¹, Naomi R. Wray ^{1,3}, Allan F. McRae¹ & Peter M. Visscher ¹✉

Genetic association studies have identified 44 common genome-wide significant risk loci for late-onset Alzheimer's disease (LOAD). However, LOAD genetic architecture and prediction are unclear. Here we estimate the optimal P -threshold (P_{optimal}) of a genetic risk score (GRS) for prediction of LOAD in three independent datasets comprising 676 cases and 35,675 family history proxy cases. We show that the discriminative ability of GRS in LOAD prediction is maximised when selecting a small number of SNPs. Both simulation results and direct estimation indicate that the number of causal common SNPs for LOAD may be less than 100, suggesting LOAD is more oligogenic than polygenic. The best GRS explains approximately 75% of SNP-heritability, and individuals in the top decile of GRS have ten-fold increased odds when compared to those in the bottom decile. In addition, 14 variants are identified that contribute to both LOAD risk and age at onset of LOAD.

¹Institute for Molecular Bioscience, The University of Queensland, Brisbane, QLD 4072, Australia. ²Centre for Genomic and Experimental Medicine, Institute of Genetics and Molecular Medicine, University of Edinburgh, Edinburgh EH4 2XU, UK. ³Queensland Brain Institute, The University of Queensland, St Lucia, QLD 4072, Australia. ⁴Centre for Advanced Imaging, The University of Queensland, St Lucia, QLD 4072, Australia. ⁵Department of Neuroscience, Icahn School of Medicine at Mount Sinai, New York, NY 10029, USA. ⁶Department of Genetics and Genomic Sciences, Icahn School of Medicine at Mount Sinai, New York, NY 10029, USA. ⁷Collaborative Genomics Group, Centre of Excellence for Alzheimer's Disease Research and Care, School of Medical and Health Sciences, Edith Cowan University, Joondalup, WA, Australia. ⁸School of Pharmacy and Biomedical Sciences, Faculty of Health Sciences, Curtin Health Innovation Research Institute, Curtin University, Bentley, WA, Australia. ⁹Centre for Healthy Brain Ageing, School of Psychiatry, University of New South Wales, Sydney, NSW, Australia. ¹⁰Neuropsychiatric Institute, Prince of Wales Hospital, Sydney, NSW, Australia. ¹¹Neuroscience Research Australia, Sydney, NSW, Australia. ¹²Department of Mathematics and Statistics, Murdoch University, Perth, WA, Australia. ¹³Dementia Centre for Research Collaboration, University of New South Wales, Sydney, NSW, Australia. *A list of authors and their affiliations appears at the end of the paper. ✉email: peter.visscher@uq.edu.au

Alzheimer's disease (AD) is the most common form of dementia. The majority (~90–95%) of AD cases are sporadic and occur after 65 years of age (late-onset Alzheimer's disease, LOAD)¹. The reported heritability of LOAD liability is 58.0% (95% CI 19.0–87.0%) from twin studies², and its estimated common single nucleotide polymorphism (SNP) based heritability on the liability scale ($h^2_{\text{SNP}(l)}$) ranges from 0.13 to 0.33^{3–5}. *APOE* alleles ($\epsilon 2$, $\epsilon 3$ and $\epsilon 4$, determined by two coding variants, rs7412 and rs429358 from chromosome 19), especially *APOE* $\epsilon 4$, explain around a quarter of the total heritability^{6,7}, and can be regarded as a proxy monogenic mutation.

In addition to *APOE* alleles, genome-wide association studies (GWASs) have identified over 40 LOAD-associated risk loci^{8–15}. Similar to other brain-related diseases (e.g., schizophrenia^{16,17}, major depression¹⁸ and Parkinson's disease¹⁹), LOAD has been described as polygenic²⁰. A genetic risk score (GRS) derived from 13,959 cases and 35,600 controls based on a large number of SNPs (i.e., SNPs with $P_{\text{GWAS}} \leq 0.5$) was reported to have better prediction accuracy than using SNPs selected with a more stringent P_{GWAS} . However, a recent study¹⁴ with 24,087 AD cases, 47,793 family history proxy cases, 55,058 controls and 328,320 proxy controls showed that the optimal P -threshold (P_{optimal}) for prediction was achieved with a stringent threshold of $\sim 10^{-5}$, which implies that using more SNPs at lower stringency does not improve prediction accuracy. The P_{optimal} of GRS on diseases (e.g., schizophrenia) was previously reported to be related to the discovery sample size²¹. Nevertheless, it was observed that the best fitting P -value for GRS prediction of schizophrenia changed little from 0.2 with 2615 cases and 3338 controls to 0.1 with 32,838 cases and 44,357 controls¹⁶. The reasons for this inconsistency in P_{optimal} for LOAD (from 0.5 to $\sim 10^{-5}$) across studies is unclear, in particular whether it may be solely due to the increase of discovery sample size. These conflicting reports on the number of common risk variants associated with LOAD led us to investigate the genetic architecture of the disease, and to compare the prediction accuracy between a multiple SNP genetic predictor of LOAD (including or excluding *APOE*) versus *APOE* alone.

For LOAD, age at onset (AAO) is also heritable. Its heritability is reported to be 0.42 (s.e. = 0.04)²² and can be predicted genetically using a genetic hazard score (GHS)²³. The effect size of each SNP in GHS is usually estimated based on Cox proportional hazards regression (survival analysis)²⁴. Previous studies have identified four genomic regions (*APOE*, *BINI*, *MS4A* and *PICALM*) with SNPs genome-wide significantly ($P < 5 \times 10^{-8}$) associated with LOAD AAO, all of these being LOAD risk loci^{13,25–28}. A direct comparison of LOAD risk and AAO on the same data may provide new insight into the genetics of LOAD.

In the present study, we investigate the prediction pattern of GRS to estimate the optimal P -value cut-off, and thereby quantify the genetic architecture of LOAD. To ensure the robustness of our results, we use four sets of (overlapping) GWAS summary statistics to calculate the GRS (with or without SNPs from chromosome 19) and examine their prediction patterns in three independent datasets (out-of-sample prediction). The results suggest that LOAD is oligogenic compared to other disorders of the brain, since only a small number of common SNPs are conditionally associated with LOAD. Furthermore, we compare the prediction performance of GRS against *APOE* and find that individuals in the upper decile of GRS have higher disease risk than those who are *APOE* $\epsilon 4$ heterozygous carriers. Finally, risk of LOAD and AAO of LOAD are found to be genetically similar.

Results

Current GWAS summary statistics on late-onset Alzheimer's disease. To date, eight studies^{8–15} have reported a total of 44

common loci (minor allele frequency > 0.01) that are associated with LOAD at a genome-wide significant level ($P < 5 \times 10^{-8}$) (Supplementary Fig. 1). As expected, the number of reported loci increased with effective sample size (Fig. 1) (Supplementary methods).

We collected four sets of GWAS summary statistics from the public domain to calculate GRS^{12–14}. They are based on samples from stage 1 in Lambert et al.¹², samples from UK Biobank (UKB) parents (a meta-analysis between GWASs on maternal and paternal LOAD), a meta-analysis between summary statistics from Lambert et al.¹² and UKB parents in Marioni et al.¹³, and a recent meta-analysis from Jansen et al.¹⁴. These summary statistics are from samples with partial overlap and some of them are independent (i.e., samples from Lambert et al.¹² and UKB parents). Genetic correlations between these summary statistics estimated by LDscore regression (LDSC)²⁹ were all close to unity (Supplementary Table 1). Among them, two estimates (genetic correlations between Lambert et al. (stage 1)¹²/Marioni et al. (UKB)¹³ and Marioni et al. (meta)¹³) were significantly ($P < 0.05$) different from one (Supplementary Table 1). This discrepancy was not expected since they were all GWAS results on the same trait and had overlapping samples. LDSC assumes that the effect sizes of SNPs follow a normal distribution, we therefore removed all SNPs from chromosome 19 to avoid the potential effect of *APOE* when estimating the genetic correlation. We also re-calculated the sample size for each SNP based on the standard error of its effect size ("Methods"). We used the flag "--intercept-gencov" to constrain the intercept by our calculated value while computing the genetic correlation. We found that the estimated genetic correlation between Marioni et al. (UKB)¹³ and Marioni et al. (meta)¹³ was 1.06 (s.e. = 0.11), and the genetic correlation between Lambert et al. (stage 1)¹² and Marioni et al. (meta)¹³ was 1.14 (s.e. = 0.11), both not significantly ($P > 0.05$) different from unity. We noted that the sample size and therefore the weights used in the meta-analysis of Jansen et al.¹⁴ were not optimal and show that the effective sample size (sample size under balanced design) should be used (Supplementary methods).

Genetic risk score in late-onset Alzheimer's disease. We used 1,056,156 SNPs (1,056,154 HapMap3 SNPs and two *APOE* SNPs: rs429358 and rs7412) shared between all four sets of summary statistics to calculate the GRS (GRS_{full}). We retained HapMap3 SNPs in our study since they are common (minor allele frequency > 0.01), well-imputed and available across all GWASs. For each set of summary statistics, we chose different P -value thresholds (1×10^{-8} , 1×10^{-7} , 1×10^{-6} , 1×10^{-5} , 3×10^{-5} , 1×10^{-4} , 3×10^{-4} , 1×10^{-3} , 3×10^{-3} , 0.01, 0.03, 0.1, 0.3, 1) and performed LD clumping ($R^2 = 0.01$, window size = 1 Mbp) to select near-independent SNPs using PLINK³⁰. Based on the selected SNPs, we calculated the weighted sum of the SNP dosage and used it as the GRS for each individual²¹. We evaluated the performance of GRS_{full} using samples from the Australian Imaging, Biomarker & Lifestyle Study (AIBL, 216 cases and 631 controls), the Sydney Memory and Ageing study (Sydney MAS, 77 cases and 588 controls) and the UKB (383 cases and 1915 controls) (Table 1). We found that the prediction accuracy (R^2) on the liability scale (Fig. 2a) ("Methods") increased when lowering the P -value threshold. Since the prediction pattern could be affected by the SNPs with major effects (e.g., *APOE* $\epsilon 4$ and $\epsilon 2$) (Supplementary Fig. 2) ("Methods"), we removed SNPs from chromosome 19 and re-calculated the GRS based on the remaining 1,037,804 SNPs (termed GRS_{no19}). Although the R^2 reduced compared to that from GRS_{full}, the optimal P -value threshold remained small (Fig. 2b). The P -value thresholds that maximised out-of-sample

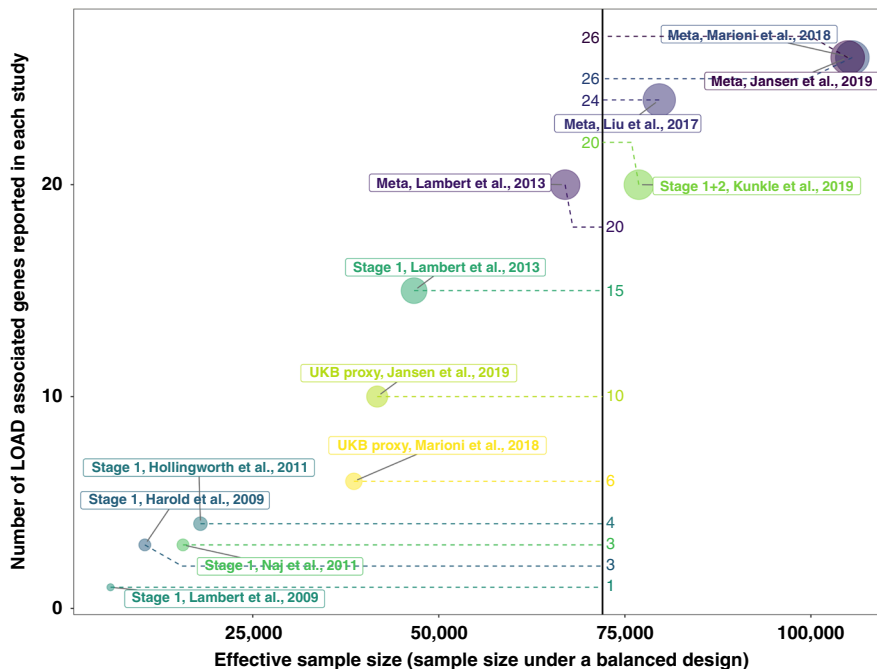


Fig. 1 The relationship between sample size and number of identified genes. Sample size is calculated as the total number of cases and controls under a balanced design (50% cases and 50% controls). Genes associated with LOAD were collected from different studies. They are the closest genes to SNPs (minor allele frequency >0.01) genome-wide significantly ($P < 5 \times 10^{-8}$) associated with LOAD. “Stage 1” means summary statistics based on the samples from stage 1 in that study and “Meta” means summary statistics from the meta-analysis from that study.

Table 1 Description of late-onset Alzheimer’s disease cases and controls from different cohorts.

	$N_{(\text{proxy})}$ case	$N_{(\text{proxy})}$ control	Age ^a (sd) (proxy) case	Age ^a (sd) (proxy) control	Female
AIBL ^b	216	631	77.6 (7.6)	72.2 (6.4)	45.3%
Sydney MAS ^c	77	588	86.8 (4.6)	84.7 (4.5)	55.6%
UKB	383	1915	64.4 (4.5)	64.5 (2.6)	53.0%
UKB mother	22,557	231,767	83.7 (6.8)	78.1 (8.4)	100%
UKB father	13,118	241,206	81.8 (6.9)	76.2 (8.1)	0%

^aFor the UKB mother and father samples, age of parental case was used as a proxy for age at onset.
^bThe Australian Imaging Biomarkers and Lifestyle Study.
^cThe Sydney Memory and Ageing Study.

prediction (R^2) in AIBL were 1×10^{-8} (Lambert et al., stage 1¹²), 1×10^{-7} (Jansen et al., meta¹⁴), 1×10^{-8} (Marioni et al., meta¹³) and 3×10^{-4} (Marioni et al., UKB¹³). Samples from UKB were only evaluated based on summary statistics from Lambert et al. (stage 1)¹² to avoid the sample overlap. Results based on Sydney MAS were highly variable (Fig. 2b) since the number of cases is small, yielding limited power compared to the other two cohorts (Fig. 2b). We found that the odds ratio between individuals in the top 50% of GRS_{no19} and those in the bottom 50% (Supplementary Fig. 3) also increased with a decrease in P -value threshold. We further explored the GRS_{no19} prediction performance of Lambert et al. (stage 1)¹² on the UKB parental LOAD (Table 1). Although the prediction accuracy is small, its pattern is consistent with that from other cohorts (Fig. 2b). Furthermore, we used less stringent R^2 (0.2) to perform LD clumping so that more SNPs could be included in GRS_{no19} . We found no improvement in prediction accuracy or change in the pattern (Supplementary Fig. 4). In addition, we estimated the optimal fraction of causal SNPs for prediction using LDpred³¹ (on SNPs outside of chromosome 19) (“Methods”) (Supplementary Fig. 5), and found the optimal proportion of SNPs was lower than 0.3% in most situations.

Given the LD between SNPs, the number of effective independent markers would be even lower.

The highest prediction accuracy of GRS_{full} (based on 22 SNPs, Supplementary Table 2) was 19.1% (95% bootstrap CI 13.1–26.9%, 1000 replications) of variance explained on the liability scale (“Methods”), with *APOE* (rs429358 and rs7412) contributing the majority (17.4%, 95% bootstrap CI 11.3–25.0%, 1000 replications). We compared this prediction accuracy with the transformed common SNP-based heritability on the liability scale ($h^2_{SNP(l)}$) reported in previous studies (ranges from 8.9 to 31.2% across studies)^{3–5} (Supplementary Table 3 and Supplementary Fig. 6) (“Methods”). The SNP-heritability was estimated by different methods and our simulations (“Methods”) suggested that when most of the SNP-based heritability was explained by a single variant, the estimated value from LDSC was lower than the simulated heritability, but the result from genome-based restricted maximum likelihood (GREML) was unbiased (Supplementary Fig. 7). Therefore, only $h^2_{SNP(l)}$ based on GREML is considered here. We found that the prediction accuracy achieved could account for around three quarters of inverse-variance

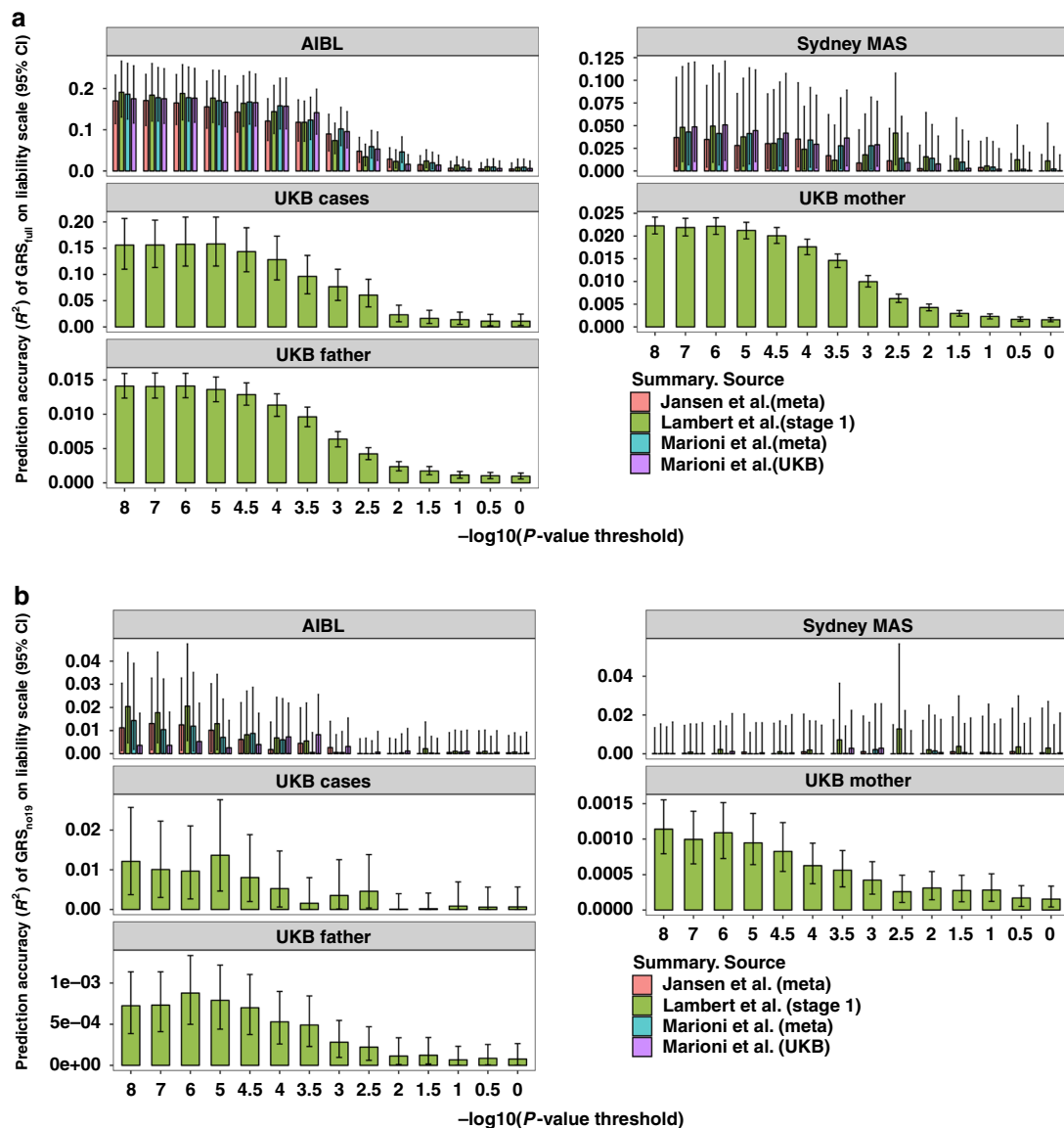


Fig. 2 The prediction performance of genetic risk score (GRS) in different datasets. **a** The prediction accuracy of GRS_{full} based on SNPs selected using different P -value thresholds. GRS_{full} was calculated based on 1,056,154 HapMap3 SNPs and two *APOE* SNPs. **b** The prediction accuracy of GRS_{no19} based on SNPs selected using different P -value thresholds. GRS_{no19} is calculated based on HapMap3 SNPs excluding SNPs from chromosome 19, to avoid contamination with *APOE*. Prediction results on samples from UKB cases and UKB parents are based on summary statistics from Lambert et al.¹² (stage 1) only. The error bars represent 95% confidence interval, and the confidence interval was calculated based on 1000 bootstrap replications⁵⁹.

weighted average of $h^2_{SNP(1)}$ (26.2%, 95% CI 22.7–29.7%), suggesting that the best GRS_{full} could explain most of the SNP-heritability. Besides, the best GRS_{full} accounts for one-third of the reported total heritability (58.0%, 95% CI 19.0–87.0%) from twin studies² (Supplementary Fig. 8). However, the differences between the prediction accuracy of *APOE*, GRS_{full} , $h^2_{SNP(1)}$, and total heritability are not statistically significant ($P > 0.05$).

Genetic architecture and optimal threshold in GRS. The prediction pattern of GRS on LOAD is different from that of polygenic traits like BMI³², height³², schizophrenia¹⁶ and major depression¹⁸. Our simulation study suggests that this difference is related to their distinct genetic architectures, and that LOAD is much less polygenic compared to these other complex traits. In our simulations, we randomly selected 100,000 unrelated individuals from the UKB and simulated traits with an SNP-heritability of 9% (close to the reported SNP-heritability of LOAD excluding

the effect of *APOE*), varying the number of causal variants (“Methods”)²¹. We selected 10,000 individuals as a (hold-out) test set and chose different number of individuals (from 10,000 to 90,000) as a training set. We ran GWAS on the training set and examined the prediction pattern of the GRS on the test set. We observed an increase in the optimal P -value threshold of GRS as the number of causal SNPs increases (from 16 to 131,072) (Fig. 3 and Supplementary Fig. 9). The pattern of GRS on LOAD was consistent with simulations on fewer than 256 causal SNPs ($P_{optimal} < 1 \times 10^{-5}$). In addition, we used a recently developed Bayesian regression method (SBayesR³³) that estimates the number of SNPs with non-zero effect size from GWAS summary statistics. We only used the Marioni et al. (meta)¹³ summary statistics, since these are based on the largest effective sample size (“Methods”). We estimated the number of SNPs with non-zero effects on LOAD to be 99 (s.e. = 6), which represents only ~0.01% of HapMap3 SNPs. This number decreased to 56 (s.e. = 6), if SNPs from chromosome 19 are removed before the

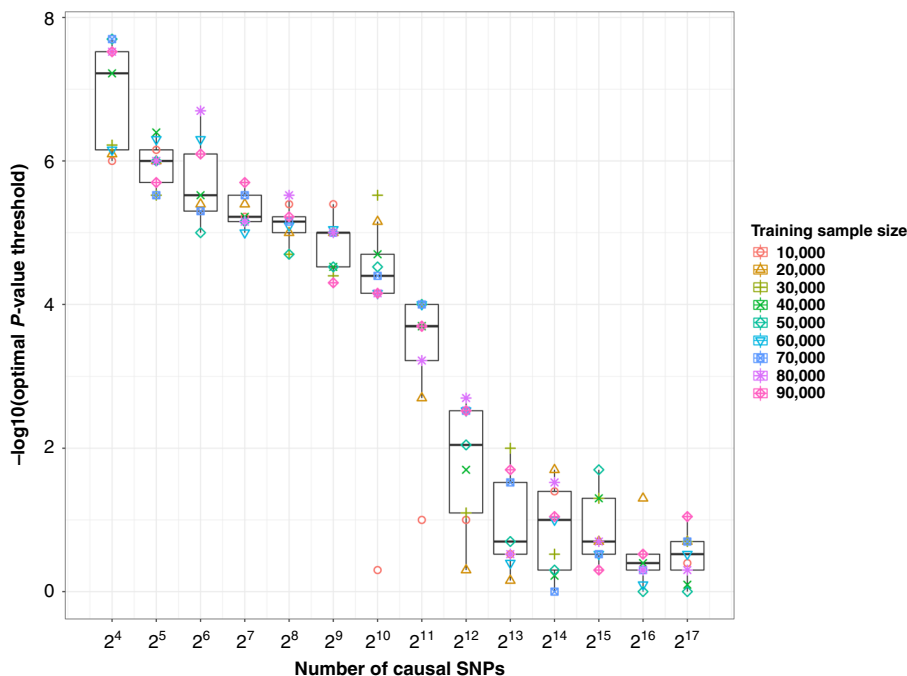


Fig. 3 The relationship between optimal GRS P -value threshold and number of causal SNPs. Causal SNPs were selected from 1,037,804 HapMap3 SNPs. For each scenario, we generated a phenotype of 100,000 individuals based on a specified number of causal SNPs (e.g., 128) with heritability 0.09. We randomly selected 10,000 individuals as the test set. Based on the unselected individuals, we randomly chose 10,000, 20,000, 30,000, 40,000, 50,000, 60,000, 70,000, 80,000 and 90,000 individuals separately as training sets and used them to perform GWAS. We examined the performance of genetic risk score (based on LD clumping with 80 separate P -value thresholds) on the test set ($N_{\text{test}} = 10,000$) and selected the optimal P -value threshold. Box plot shows the median (centre line), the interquartile range (box) and whiskers (± 1.5 times interquartile range).

analysis. For context, these estimates are much lower than those of other common diseases such as Parkinson’s disease (33,728, s.e. = 11,968), schizophrenia (184,879, s.e. = 25,250) and major depression (172,735, s.e. = 43,219) (“Methods”).

Comparison of prediction performance between GRS and $APOE$. For coronary artery disease, GRS could identify individuals with risk equivalent to monogenic mutations³⁴. Here, we compared the prediction performance of $APOE$ with GRS (based on the most stringent P -value threshold: 1×10^{-8}). In AIBL, individuals who are $APOE \epsilon 4$ heterozygous carriers were found to have a higher disease risk (43.6%) than those in the highest decile of a GRS_{no19} (35.7%). Using both $APOE$ SNPs and variants on other chromosomes, the disease risk of individuals in the top decile of the GRS_{full} was 57.1% (Fig. 4a). The odds ratio was 10.0 (95% CI 4.5–22.0) compared to individuals in the bottom decile (Fig. 4b). This disease risk is larger than the individuals who are $APOE \epsilon 4$ heterozygous carriers (43.6%), but smaller than individuals who are homozygous for $APOE \epsilon 4$ (59.6%). Nevertheless, individuals in the last percentile of GRS_{full} have larger disease risk (75.0%) than individuals who are homozygous for $APOE \epsilon 4$. We observed the same pattern in the Sydney MAS and UKB samples (Fig. 4a). Across the different target datasets, around 1% improvement of the area under the ROC curve (AUC) could be achieved by a GRS_{full} (ranges from 57.1 to 73.2%) compared to $APOE$. Ignoring SNPs from chromosome 19, the AUC based on GRS_{no19} ranges from 51.8% (95% CI 51.4–52.3%) to 59.0% (95% CI 54.2–63.1%), all of them are significantly different (P -value < 0.05) from 50% (Supplementary Fig. 10).

Genetic similarity between LOAD risk and AAO. To explore whether there are more genomic loci associated with both LOAD risk and AAO, we tried to detect new AAO loci and investigate

whether they have been identified to be associated with LOAD risk. We used the parental AAO of LOAD as reported in UKB as a proxy of AAO and performed genome-wide survival analysis (GWSA) on maternal and paternal AAO of LOAD separately (“Methods”). Six independent (pairwise $R^2 < 0.01$) genome-wide significant ($P < 5 \times 10^{-8}$) SNPs were identified after meta-analysing the parental AAO results (Supplementary Fig. 11a). Furthermore, we meta-analysed the UKB results with previously reported AAO GWSA summary statistics²⁸, and identified 16 genomic loci with SNPs showing genome-wide significant ($P < 5 \times 10^{-8}$) association with LOAD AAO (Table 2) (Supplementary Fig. 11b). Among these, 14 loci were genome-wide significantly associated ($P < 5 \times 10^{-8}$) with LOAD risk, the remaining two SNPs also have P -values $< 5 \times 10^{-5}$. The correlation between the effect sizes of the 16 SNPs on disease risk and AAO was 1.00 (s.e. = 0.02), suggesting the risk alleles of LOAD also decrease the AAO of LOAD.

Discussion

In this study, we investigated the predictive performance of GRS on LOAD using four sets of summary statistics and applied them to three independent datasets. We found a clear pattern in that prediction performance of GRS increases with the use of a more stringent P -value threshold for SNP selection and therefore with fewer SNPs in the model. Consistent with simulations and direct estimation (SBayesR), we conclude that a relatively small number (in the hundreds) of common variants contribute to LOAD risk. $APOE$ was responsible for most of the prediction accuracy of LOAD, but other variants also show significant prediction accuracy (maximum R^2 on liability scale = 2.0%, 95% bootstrap CI 0.5–4.5%, 1000 replications). Genetic variants that contribute to the risk of disease are also associated with an earlier AAO.

Taking all of our results together, we conclude that the empirical data are consistent with an oligogenic common variant

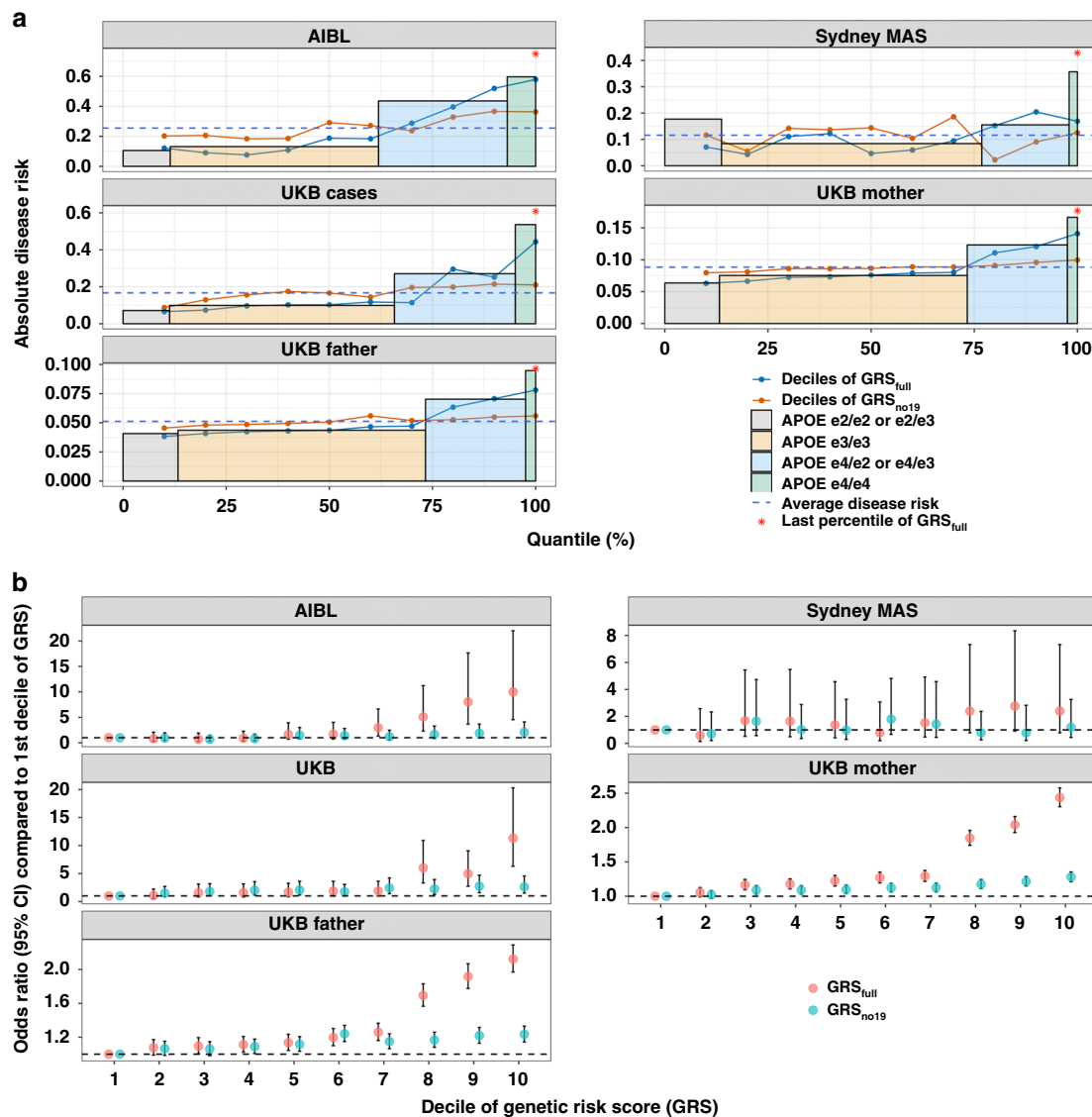


Fig. 4 The comparison of LOAD prediction performance between GRS and APOE. **a** The disease risk of late-onset Alzheimer’s disease of individuals in different deciles of GRS (both GRS_{full} and GRS_{no19}), last percentile of GRS_{full} and in individuals with $APOE \epsilon 2/\epsilon 2$ or $\epsilon 2/\epsilon 3$, $APOE \epsilon 3$ homozygotes ($\epsilon 3/\epsilon 3$), $APOE \epsilon 4$ heterozygotes ($\epsilon 4/\epsilon 3$ or $\epsilon 4/\epsilon 2$) and $APOE \epsilon 4$ homozygotes ($\epsilon 4/\epsilon 4$). Samples from AIBL, Sydney MAS, UKB cases, UKB mother and UKB father were examined. **b** Odds ratio between individuals in the other deciles and first decile of GRS. GRS_{full} was calculated based on 1,056,154 HapMap3 SNPs and two $APOE$ SNPs. GRS_{no19} was calculated based on HapMap3 SNPs but excluding SNPs from chromosome 19. Only independent ($R^2 < 0.01$) SNPs with $P < 1 \times 10^{-8}$ were used to calculate the GRS. The error bars in **b** represent 95% confidence interval.

architecture of LOAD (~0.01% of SNPs with MAF > 1% have non-zero effects on LOAD). This is smaller than the polygenicity estimate of 0.26% (s.e. = 0.19%) reported in a previous study³⁵. However, considering the standard error of that estimate, it is not significantly ($P > 0.05$) different from our estimate of 0.01% (s.e. = 0.0006%). Besides, this architecture contrasts with many other common diseases and disorders which are highly polygenic. For comparison, we applied the SBayesR method³³ to GWAS summary statistics for schizophrenia^{16,17}, major depression¹⁸ and Parkinson’s disease¹⁹, and estimated the proportion of HapMap3 SNPs with non-zero effects size as 17.5% (s.e. = 2.4%), 3.2% (s.e. = 0.8%) and 16.4% (s.e. = 5.8%), respectively. In addition, their optimal P -value thresholds of GRS for these diseases were all ≥ 0.05 ^{16,18,19}. LOAD was previously labelled as polygenic by Escott-Price et al.²⁰, who reported a best fitting P -value threshold of 0.5. However, most of the control samples (~6000 out of 7277) in their test dataset (Genetic and Environmental Risk in

Alzheimer’s Disease consortium) were younger than 60 years old when their disease status was reported, and the ages of most cases were over 75 years¹². Treating these samples as controls might bias prediction results, since the typical AAO of LOAD is above 65 years. In addition, sample overlap between training and test sets would also lead to a large optimal P -value threshold. In Jansen et al.¹⁴, the best fitting P -value threshold was 1.69×10^{-5} when the test set was independent of the training set. For a test set that overlaps with the training set (accounting ~3% of training set³⁶), the optimal P -value threshold was 0.5. Our simulations show that when the test set is part of a training set, the best P -value threshold is close to 1 (Supplementary Fig. 12) (“Methods”), even if the proportion is small (e.g., only 1%), consistent with theory³⁷. Therefore, taken together, we conclude that the previous report of LOAD being polygenic is likely biased by sample overlap and/or the ascertainment of controls that may go on to develop LOAD at a later stage.

Table 2 Genome-wide significant SNPs associated with age at onset (AAO) of late-onset Alzheimer's disease.

CHR	BP	SNP	A1	Closest Gene ^a	BETA_AAO	P_AAO	BETA_RISK ^b	P_RISK ^b
1	207786289	rs6701713 ^c	A	<i>CR1</i>	0.079	3.5E – 12	0.132	1.6E – 28
2	127891427	rs4663105 ^c	A	<i>LOC105373605</i>	–0.139	1.8E – 28	–0.162	7.3E – 49
6	32573415	rs601945 ^c	A	<i>HLA-DRB1</i>	0.070	4.2E – 08	0.106	1.2E – 14
6	47432637	rs9381563 ^c	T	.	–0.066	1.2E – 08	–0.075	5.8E – 14
7	99990364	rs34995835 ^c	T	<i>PILRA</i>	–0.066	1.3E – 10	–0.094	1.1E – 18
8	27464929	rs4236673 ^c	A	<i>CLU</i>	–0.074	1.9E – 10	–0.110	1.1E – 28
11	85867875	rs10792832 ^c	A	<i>PICALM</i>	–0.088	2.9E – 20	–0.124	5.1E – 36
11	121435587	rs11218343 ^c	T	<i>SORL1</i>	0.171	6.1E – 12	0.213	4.8E – 17
11	60021948	rs1582763 ^c	A	<i>MS4A</i>	–0.084	2.5E – 18	–0.088	1.0E – 18
14	92937293	rs4904929 ^c	T	<i>SLC24A4</i>	–0.068	6.0E – 09	–0.075	1.1E – 10
15	59022615	rs442495 ^c	T	<i>ADAM10</i>	0.058	5.3E – 09	0.067	5.5E – 11
17	5139808	rs58124010 ^c	T	<i>SCIMP</i>	0.078	2.6E – 08	0.108	2.0E – 10
19	45412955	rs1081105 ^c	A	<i>APOE</i>	–0.783	5.1E – 216	–0.941	6.5E – 199
19	1039444	rs3795065 ^c	T	<i>ABCA7, CNN2</i>	–0.076	1.2E – 08	–0.077	3.7E – 10
1	161151844	rs11265563 ^d	A	<i>B4GALT3</i>	0.078	8.9E – 09	0.049	4.4E – 05
4	11027619	rs4351014 ^d	T	.	0.057	2.3E – 08	0.060	3.4E – 07

^aClosest gene from variant effect predictor (VEP v98)⁶⁰.
^bBETA and P-value from GWAS on LOAD from Marioni et al.¹³. A1 is the effect allele.
^cSNPs genome-wide significantly associated with both LOAD AAO and LOAD risk.
^dSNPs genome-wide significantly associated with LOAD AAO only.

There is a wide range of LOAD SNP-heritability reported across studies, ranging from 8.9 to 31.2% (Supplementary Table 3). Except for the difference due to the estimation methods, such differences could also be caused by differences in age distributions between datasets (Supplementary Fig. 8), since the genetic effect on LOAD was reported to be age-dependent³⁸. Based on the same method, the estimated heritability in datasets with younger individuals was found to be larger than that using older individuals (Supplementary Table 3). Another potential reason could be heterogeneity between datasets, for example with respect to diagnostic criteria. For the summary statistics based on meta-analysis in particular, this heterogeneity would attenuate heritability estimates⁵.

There are a number of limitations in this study: (1) We focused on the additive effect of common variants, and did not explore non-additive genetic or gene by environment effects; (2) our analysis was based on summary statistics from a meta-analysis of a number of datasets. Heterogeneity (e.g., based on different diagnostic criteria) and measurement error (e.g., proxy cases from UKB are self-reported) in these datasets (and those used in this study) might have affected our result. The estimated number of conditionally associated SNPs could be smaller than reported if there is heterogeneity and/or measurement error; (3) the sample sizes of the datasets with real cases and controls used in this study are small, a larger dataset would be required to test the significance of the difference in prediction accuracy (R^2) between GRSs based on optimal P -value and other P -value thresholds; (4) rare variants were not considered. There are several genes with rare mutations with large effects on LOAD^{39–41}. Those mutations contribute little to heritability and to prediction accuracy in population samples because of their low frequency. Larger GWAS samples should allow identification of the remaining undiscovered common SNPs associated with LOAD but also offer the opportunity to identify rarer SNPs (e.g., MAF in 0.001–0.1) in order to refine and improve the GRS.

Methods

Study populations. *AIBL*: we selected 216 cases and 631 controls (participants with mild cognitive impairment were regarded as controls) with genotype information from the Australian Imaging, Biomarker & Lifestyle Flagship Study (Table 1). We removed SNPs with minor allele frequency smaller than 0.01, SNP

missingness rate larger than 0.05, and not passing Hardy–Weinberg equilibrium test ($P < 5 \times 10^{-6}$). Genotypes were imputed to the sequencing data from the Haplotype Reference Consortium (r1.1) using the Sanger Imputation Service (<https://imputation.sanger.ac.uk>). A total of 6,972,431 SNPs with info score larger than 0.8 were selected after imputation. Data were collected by the AIBL study group. AIBL study methodology and acquisition of genetic data have been reported previously^{42,43}. Ethics approval for the AIBL study and all experimental protocols were provided by the ethics committees of Austin Health, St Vincent’s Health, Hollywood Private Hospital and Edith Cowan University. Informed consent was obtained from all participants.

Sydney MAS: we selected 77 cases and 588 controls (including participants with mild cognitive impairment) with genotype information from the Sydney Memory and Ageing Study⁴⁴ (Table 1). We applied the same quality control steps and imputation as in that in AIBL. In total, 4,303,719 SNPs with info score larger than 0.8 were selected after imputation. Acquisition of genetic data has been described previously⁴⁵. Informed consent was obtained from all participants, and Sydney MAS was approved by the Human Research Ethics Committee of the University of New South Wales (# HC14327).

UKB family history: UKB data (<http://www.ukbiobank.ac.uk>) were collected on over 500,000 individuals aged between 37 and 73 years from across Great Britain (England, Wales and Scotland) at the study baseline (2006–2010), including health, cognitive and genetic data. Family history of AD was ascertained via self-report. Participants were asked “Has/did your father ever suffer from Alzheimer’s disease/dementia?” (Data-Field: 20107) and “Has/did your mother ever suffer from Alzheimer’s disease/dementia?” (Data-Field: 20110). Self-report data from the initial assessment visit (2006–2010), the first repeat assessment visit (2012–2013) and the imaging visit (2014+) were aggregated. We only included participants with parents older than 60 years or whose parents died after 60 years of age. Only genetically unrelated individuals (genetic relationship correlation <0.05) with European ancestry were selected. In total, 22,557/13,118 individuals with maternal/paternal LOAD were selected as proxy case samples, 231,767/241,206 individuals without maternal/paternal LOAD were selected as proxy control samples. Imputation and QC steps on SNPs have been detailed elsewhere⁴⁶, 8,545,378 SNPs left after QC.

UKB: additional information on LOAD was obtained for participants themselves from UKB. Briefly, 383 participants with a diagnosis of “Alzheimer’s disease” (ICD10 code: G30.1 and G30.9) or “Dementia in Alzheimer’s disease” (ICD10 code: F00.1 and F00.9) or “dementia/Alzheimer’s/cognitive impairment” (UKB Data-Coding 6: 1263) were selected. We randomly selected 1915 participants (with age at baseline greater than 60) from the remaining samples as controls. These samples were used as a test set. Informed consent was obtained by UKB from all participants, and the ethics approval for the UKB study was obtained from the North West Centre for Research Ethics Committee (11/NW/0382).

The estimation of intercept for LDSC. An inaccurately estimated intercept in LDSC could affect the precision of the estimate of the genetic correlation²⁹. We therefore calculated the intercept directly other than estimating it in LDSC. The intercept was calculated as $\frac{N_1}{\sqrt{N_1 N_2}}$, N_1 and N_2 are the average per SNP sample size in each study, N_3 is the number of overlapping samples between studies. The intercept

between Marioni et al. (UKB)¹³ and Marioni et al. (meta)¹³ was estimated to be 0.75 (it was 0.77 from LDSC), and the intercept between Lambert et al. (stage 1)¹² and Marioni et al. (meta)¹³ was 0.67 (it was 0.68 from LDSC).

Heritability and prediction accuracy on liability scale. The heritability on liability scale ($h_{SNP(l)}^2$) can be transformed from heritability on observed scale (h_o^2 , treating case/control as 1/0)⁴⁷:

$$h_l^2 = h_o^2 \frac{K(1-K)K(1-K)}{z^2 P(1-P)}, \tag{1}$$

where K is the population disease prevalence, P is the proportion of cases in the ascertained sample and z is the height of the standard normal probability density function at the truncation threshold t which corresponds to probability K . z can be calculated using the R functions $qnorm()$ and $dnorm()$: $t = qnorm(1 - K)$ and $z = dnorm(t)$. The formula is more complicated for transforming prediction accuracy on the observed scale (R_o^2) to the liability scale (R_l^2)⁴⁸:

$$R_l^2 = \frac{R_o^2 C}{1 + \theta R_o^2 C}, \tag{2}$$

where C is $\frac{K(1-K)K(1-K)}{z^2 P(1-P)}$ and θ is $\frac{z(P-K)}{K(1-K)} \frac{z(P-K)}{K(1-K)} - t$. We used 5% as the population disease lifetime prevalence in this study⁴⁹.

The following equation was used to transform $h_{SNP(K_1)}^2$ estimated using population prevalence K_1 to $h_{SNP(K_2)}^2$ using population prevalence K_2 :

$$h_{SNP(K_2)}^2 = h_{SNP(K_1)}^2 \times \left(\frac{z_{K_1} K_2 (1 - K_2)}{z_{K_2} K_1 (1 - K_1)} \right)^2, \tag{3}$$

where z_{K_1} and z_{K_2} are the values of the standard normal probability density function at the truncation threshold z -score, which corresponds to probabilities K_1 and K_2 .

Genetic correlation. The genetic correlation between two sets of summary statistics was estimated using LDSC⁵⁰. To avoid the potential effect of *APOE* in determining the genetic correlation, we used the flag “--two-step 30” to remove SNPs with a chi-square test statistic larger than 30 (corresponds to a genome-wide significant P -value of 5×10^{-8}) in either study. Note that this is the default option for univariate LDSC analyses.

Simulation of a trait with different number causal SNPs (one of the SNPs is a major mutation). We randomly selected 100,000 unrelated individuals from UKB. We simulated a trait with heritability 0.2 using different number of causal SNPs ($2^4, 2^5, 2^6, 2^7, 2^8, 2^9, 2^{10}, 2^{11}, 2^{12}, 2^{13}, 2^{14}$) randomly selected from 1,056,156 SNPs. We chose one of the selected SNPs as a major mutation, and assumed that it explained 20, 50 and 80% of the heritability. For each simulated trait with a certain number of causal SNPs, we selected 10,000 individuals as a test set and chose 10,000–90,000 individuals from the remaining individuals as a training set. We performed a GWAS on the training set and examined the prediction performance of GRS on the test set. GRS were calculated based on near-independent SNPs selected from 80 different P -value thresholds (from 1×10^{-8} to 1) and LD clumping ($R^2 = 0.01$, region = 1 Mbp). The optimal value was selected as the P -value threshold that maximised the prediction accuracy.

Simulation of a trait with different number causal SNPs (no major mutation). We randomly selected 100,000 unrelated individuals from UKB. We simulated a trait with heritability 0.06 using different number of causal SNPs ($2^4, 2^5, 2^6, 2^7, 2^8, 2^9, 2^{10}, 2^{11}, 2^{12}, 2^{13}, 2^{14}, 2^{15}, 2^{16}, 2^{17}$) randomly selected from 1,037,804 SNPs. For each simulated trait with a certain number of causal SNPs, we selected 10,000 individuals as a test set and chose 10,000–90,000 individuals from the remaining individuals as a training set. We performed a GWAS on the training set and examined the prediction performance of the GRS on the test set. GRS were calculated based on near-independent SNPs selected from 80 different P -value thresholds (from 1×10^{-8} to 1) and LD clumping ($R^2 = 0.01$, region = 1 Mbp).

Estimating the number of SNPs with non-zero effect on LOAD. We used SBayesR³³ (implemented in GCTB⁵¹) to estimate the number of SNPs with a non-zero effect on LOAD. We used the GWAS summary statistics based on the meta-analysis from Marioni et al.¹³ (the sum of the number of participants in IGAP1 and IGAP2 and 25% of the number of maternal and paternal samples was used as the sample size). Summary statistics from Jansen et al.¹⁴ was not utilised since the weights used to generate these summary statistics (in the meta-analysis) were not optimal. The model did not converge while using summary statistics from Lambert et al.¹². The estimated number of SNPs (excluding SNPs from chromosome 19) with non-zero effect based on summary statistics from Marioni et al. (UKB)¹³ was 325 (s.e. = 69). The number was larger than that from Marioni et al. (meta)¹³ since the disease status in UKB was reported but not diagnosed. Therefore, SNPs associated with other diseases might also be detected. The LD matrix was calculated based on 1,056,156 SNPs (1,056,154 HapMap3 SNPs and two *APOE* SNPs: rs429358 and rs7412) using a random sample of 10,000 unrelated (genetic

relatedness <0.05) individuals in the UKB. We set the starting values (π) for each mixture component to 0.95, 0.03, 0.01 and 0.01, respectively, and their corresponding gamma values to 0, 0.01, 0.1 and 1. π are probabilities of the SNP in the mixture classes and the gamma coefficients constrain how the common marker effect variance scale in each class. The total number of iterations for the MCMC chain was set to 50,000. We used the same parameters for the GWAS summary statistics of the other disorders considered: Parkinson’s disease⁵², major depression⁵³ and schizophrenia¹⁷. In addition, we removed SNPs from chromosome 19 and performed the analysis with the same parameters on the remaining 1,037,804 SNPs.

Genetic risk score based on LDpred. We randomly selected 10,000 unrelated (genetic relatedness <0.05) individuals from UKB as the LD reference of 1,037,804 SNPs (all HapMap3 SNPs excluding SNPs from chromosome 19). We examined the prediction accuracy of GRSs by assigning 14 proportions of causal SNPs: 1×10^{-8} , 1×10^{-7} , 1×10^{-6} , 1×10^{-5} , 3×10^{-5} , 1×10^{-4} , 3×10^{-4} , 1×10^{-3} , 3×10^{-3} , 0.01, 0.03, 0.1, 0.3, 1.

Genome-wide survival analysis on AAO of LOAD. Two types of parental age were used in the GWSA as parental proxy AAO of LOAD: parental age at death and parental age at measurement. We performed GWSA on maternal and paternal AAO of LOAD separately. Specifically, we used Cox proportional hazard models²⁴ implemented in the “survival” R package⁵⁴ to identify SNPs associated with parental AAO of LOAD across the genome. Compared to normal GWSA that detect the SNP effect on AAO of individuals themselves, we expect the effect size from GWSA on parental AAO to be halved²⁵. The Cox model is defined as:

$$h(t) = h_0(t) \exp(\beta_0 SNP + \beta COV), \tag{4}$$

where $h(t)$ is the hazard rate of developing LOAD at age t , t is the proxy parental AAO for cases and parental age at last assessment for controls. $h_0(t)$ is the baseline hazard of developing LOAD, which is not estimated in Cox regression. β_0 is the effect of a SNP on the hazard ratio (HR) and β are effects of covariates (COV), including assessment centre, genotype chip array, age of participants, 20 genetic principal components (PCs), and whether the parent is alive or not.

Based on GWSA results on maternal AAO and paternal AAO, we carried out an inverse-variance meta-analysis using METAL⁵⁵ and identified six independent (pairwise LD < 0.01) genome-wide significant ($P < 5 \times 10^{-8}$) loci (Supplementary Fig. 11a).

The effect size log(HR) and standard error of each SNP in our survival analysis on parental AAO of LOAD were multiplied by 2, so that it can be on the same scale as a traditional design (i.e., survival analysis on AAO of LOAD using individual-level data)^{13,25,56}. After meta-analysis with these summary statistics, we identified SNPs in 16 loci that were genome-wide significantly ($P < 5 \times 10^{-8}$) associated with LOAD AAO (Table 2 and Supplementary Fig. 11b).

The Cox model assumes proportional hazards. We examined whether the assumption was violated in the 16 genome-wide SNPs by investigating the association between Schoenfeld residuals from the model and age⁵⁷. The significant association suggests a non-constant HR. The SNP effects on both maternal and paternal AAO of AD were tested. We used the `cox.zph` function in the R “survival” package⁵⁴ to calculate the significance of this association. rs1081105 (*APOE*) based on maternal AD AAO was found to be significant ($P < 0.05/32$), suggesting the HR of this SNP is not constant with time (Supplementary Fig. 13), there is SNP by age effect. Given that the HR of this SNP was extremely large (HR = 2.6) and significant ($P = 4.0 \times 10^{-106}$, Cox proportional hazards model), we retained this SNP in the model.

Effect of major mutation on the estimation of SNP-based heritability. We randomly selected 40,000 unrelated individuals from the UKB. We simulated a trait with heritability 0.2 and 100 causal SNPs randomly selected from 1,056,156 SNPs (1,056,154 HapMap3 SNPs and two *APOE* SNPs: rs429358 and rs7412). One of the randomly chosen SNPs was set to be a major mutation. The proportion of heritability explained by this SNP varied from 0 to 100%. For each proportion (e.g., 50%), we iterated the following steps 100 times: (1) select 100 SNPs and choose one as the major SNP; (2) generate a continuous trait with heritability 0.2 using the standardised dosage of the 100 SNPs (with effect sizes of 99 SNPs sampled from a standard normal distribution and the effect size of the major variant calculated to make sure it explained a specific proportion (e.g., 50%) of SNP-based heritability); (3) perform GWAS on the simulated trait with 20 genetic PCs as covariates; (4) use LDSC to estimate the heritability based on the GWAS summary statistics. Both default setting (SNPs with $\chi^2 > 30$ are removed) and using all SNPs (SNPs with $\chi^2 > 20,000$ are removed) were examined; (5) use GCTA-GREML to estimate the heritability based on the individual-level data with 20 PCs as covariates.

Estimating per SNP sample size. In logistic regression, the sample size of each SNP (x) can be estimated based on the standard error (s.e.) of log(odds ratio)⁵⁸:

$$N \approx \frac{\text{var}(y)}{\text{s.e.}^2 \text{var}(x)} \approx \frac{1}{2Np(1-p)P(1-P)}, \tag{5}$$

where P is the proportion of cases, p is the minor allele frequency and y is the disease (1 for case and 0 for control). We define P as 0.5 so that it is the sample size for a balanced design.

Relationship between sample overlap and prediction pattern. We randomly selected 90,000 unrelated individuals from UKB to simulate a trait with heritability 0.2 and 128 causal SNPs (close to the estimated number SNPs with non-zero effect on LOAD) selected from 1,056,156 SNPs (1,056,154 HapMap3 SNPs and two *APOE* SNPs: rs429358 and rs7412). We chose one of the selected SNPs as a major mutation, and assumed that it explained 20, 50 and 80% of the heritability. We performed GWAS on these individuals (training dataset) to get the summary statistics. We randomly selected a proportion of individuals from the training dataset (fraction ranges from 1 to 20%) as a test set and examined the prediction pattern of GRS (based on the GWAS summary statistics) on this test set.

Reporting summary. Further information on research design is available in the Nature Research Reporting Summary linked to this article.

Data availability

The genotype data used in this work were obtained from the UK Biobank, the Australian Imaging, Biomarker & Lifestyle Flagship Study and the Sydney Memory and Ageing Study. GWAS summary statistics on late-onset Alzheimer's disease (LOAD) are available at Marioni et al.¹³ [<https://cnsgenomics.com/content/data>], Lambert et al.¹² [http://web.pasteur-lille.fr/en/recherche/u744/igap/igap_download.php] and Jansen et al.¹⁴ [https://ctg.cncr.nl/software/summary_statistics]. Survival GWAS summary statistics on age at onset of LOAD are available at Huang et al.²⁸ [<https://www.niagads.org/datasets/ng00058>]. Summary statistics from the meta-analysis on LOAD AAO are available at [<https://cnsgenomics.com/content/data>]. The data that support the findings of this study are available from UK Biobank (<http://www.ukbiobank.ac.uk/about-biobank-uk/>). Restrictions apply to the availability of these data, which were used under license for the current study (Project ID: 12505). Data are available for bona fide researchers upon application to the UK Biobank. All other data are contained in the article and its Supplementary information, or are available on request.

Received: 6 May 2020; Accepted: 25 August 2020;

Published online: 23 September 2020

References

- Harman, D. Alzheimer's disease pathogenesis: role of aging. *Ann. N.Y. Acad. Sci.* **1067**, 454–460 (2006).
- Gatz, M. et al. Role of genes and environments for explaining Alzheimer disease. *Arch. Gen. Psychiatry* **63**, 168–174 (2006).
- Lee, S. H. et al. Estimation and partitioning of polygenic variation captured by common SNPs for Alzheimer's disease, multiple sclerosis and endometriosis. *Hum. Mol. Genet.* **22**, 832–841 (2013).
- Ridge, P. G., Mukherjee, S., Crane, P. K. & Kauwe, J. S. Alzheimer's Disease Genetics Consortium. Alzheimer's disease: analyzing the missing heritability. *PLoS ONE* **8**, e79771 (2013).
- Brainstorm Consortium et al. Analysis of shared heritability in common disorders of the brain. *Science* **360**, eaap8757 (2018).
- Van Cauwenberghe, C., Van Broeckhoven, C. & Sleegers, K. The genetic landscape of Alzheimer disease: clinical implications and perspectives. *Genet. Med.* **18**, 421–430 (2016).
- Escott-Price, V., Shoai, M., Pither, R., Williams, J. & Hardy, J. Polygenic score prediction captures nearly all common genetic risk for Alzheimer's disease. *Neurobiol. Aging* **49**, 214.e7–214.e11 (2017).
- Harold, D. et al. Erratum: genome-wide association study identifies variants at CLU and PICCALM associated with Alzheimer's disease. *Nat. Genet.* **41**, 1156–1156 (2009).
- Lambert, J. C. et al. Genome-wide association study identifies variants at CLU and CR1 associated with Alzheimer's disease. *Nat. Genet.* **41**, 1094–1099 (2009).
- Hollingworth, P. et al. Common variants at ABCA7, MS4A6A/MS4A4E, EPHA1, CD33 and CD2AP are associated with Alzheimer's disease. *Nat. Genet.* **43**, 429–435 (2011).
- Naj, A. C. et al. Common variants at MS4A4/MS4A6E, CD2AP, CD33 and EPHA1 are associated with late-onset Alzheimer's disease. *Nat. Genet.* **43**, 436–441 (2011).
- Lambert, J. C. et al. Meta-analysis of 74,046 individuals identifies 11 new susceptibility loci for Alzheimer's disease. *Nat. Genet.* **45**, 1452–1458 (2013).
- Marioni, R. E. et al. GWAS on family history of Alzheimer's disease. *Transl. Psychiatry* **8**, 99 (2018).
- Jansen, I. E. et al. Genome-wide meta-analysis identifies new loci and functional pathways influencing Alzheimer's disease risk. *Nat. Genet.* **51**, 404–413 (2019).
- Kunkle, B. W. et al. Genetic meta-analysis of diagnosed Alzheimer's disease identifies new risk loci and implicates Abeta, tau, immunity and lipid processing. *Nat. Genet.* **51**, 414–430 (2019).
- Schizophrenia Working Group of the Psychiatric Genomics Consortium. Biological insights from 108 schizophrenia-associated genetic loci. *Nature* **511**, 421–427 (2014).
- Bipolar Disorder and Schizophrenia Working Group of the Psychiatric Genomics Consortium. Genomic dissection of bipolar disorder and schizophrenia, including 28 subphenotypes. *Cell* **173**, 1705–1715.e16 (2018).
- Howard, D. M. et al. Genome-wide meta-analysis of depression identifies 102 independent variants and highlights the importance of the prefrontal brain regions. *Nat. Neurosci.* **22**, 343–352 (2019).
- Nalls, M. A. et al. Identification of novel risk loci, causal insights, and heritable risk for Parkinson's disease: a meta-analysis of genome-wide association studies. *Lancet Neurol.* **18**, 1091–1102 (2019).
- Escott-Price, V. et al. Common polygenic variation enhances risk prediction for Alzheimer's disease. *Brain* **138**, 3673–3684 (2015).
- International Schizophrenia Consortium et al. Common polygenic variation contributes to risk of schizophrenia and bipolar disorder. *Nature* **460**, 748–752 (2009).
- Li, Y. J. et al. Age at onset in two common neurodegenerative diseases is genetically controlled. *Am. J. Hum. Genet.* **70**, 985–993 (2002).
- Desikan, R. S. et al. Genetic assessment of age-associated Alzheimer disease risk: development and validation of a polygenic hazard score. *PLoS Med.* **14**, e1002258 (2017).
- Cox, D. R. Regression models and life-tables. *J. R. Stat. Soc. Ser. B-Stat. Methodol.* **34**, 187–202 (1972).
- Liu, J. Z., Erlich, Y. & Pickrell, J. K. Case-control association mapping by proxy using family history of disease. *Nat. Genet.* **49**, 325–331 (2017).
- Kamboh, M. I. et al. Genome-wide association analysis of age-at-onset in Alzheimer's disease. *Mol. Psychiatry* **17**, 1340–1346 (2012).
- Naj, A. C. et al. Effects of multiple genetic loci on age at onset in late-onset Alzheimer disease: a genome-wide association study. *JAMA Neurol.* **71**, 1394–1404 (2014).
- Huang, K. L. et al. A common haplotype lowers PU.1 expression in myeloid cells and delays onset of Alzheimer's disease. *Nat. Neurosci.* **20**, 1052–1061 (2017).
- Bulik-Sullivan, B. et al. An atlas of genetic correlations across human diseases and traits. *Nat. Genet.* **47**, 1236–1241 (2015).
- Purcell, S. et al. PLINK: a tool set for whole-genome association and population-based linkage analyses. *Am. J. Hum. Genet.* **81**, 559–575 (2007).
- Vilhjalmsson, B. J. et al. Modeling linkage disequilibrium increases accuracy of polygenic risk scores. *Am. J. Hum. Genet.* **97**, 576–592 (2015).
- Yengo, L. et al. Meta-analysis of genome-wide association studies for height and body mass index in approximately 700,000 individuals of European ancestry. *Hum. Mol. Genet.* **27**, 3641–3649 (2018).
- Lloyd-Jones, L. R. et al. Improved polygenic prediction by Bayesian multiple regression on summary statistics. *Nat. Commun.* **10**, 5086 (2019).
- Khera, A. V. et al. Genome-wide polygenic scores for common diseases identify individuals with risk equivalent to monogenic mutations. *Nat. Genet.* **50**, 1219–1224 (2018).
- Zhang, Y., Qi, G., Park, J. H. & Chatterjee, N. Estimation of complex effect-size distributions using summary-level statistics from genome-wide association studies across 32 complex traits. *Nat. Genet.* **50**, 1318–1326 (2018).
- Escott-Price, V., Myers, A. J., Huentelman, M. & Hardy, J. Polygenic risk score analysis of pathologically confirmed Alzheimer disease. *Ann. Neurol.* **82**, 311–314 (2017).
- Wray, N. R. et al. Pitfalls of predicting complex traits from SNPs. *Nat. Rev. Genet.* **14**, 507–515 (2013).
- Lo, M. T. et al. Identification of genetic heterogeneity of Alzheimer's disease across age. *Neurobiol. Aging* **84**, e243.e1–243.e9 (2019).
- Sims, R. et al. Rare coding variants in PLCG2, ABI3, and TREM2 implicate microglial-mediated innate immunity in Alzheimer's disease. *Nat. Genet.* **49**, 1373–1384 (2017).
- Cruchaga, C. et al. Rare variants in APP, PSEN1 and PSEN2 increase risk for AD in late-onset Alzheimer's disease families. *PLoS ONE* **7**, e31039 (2012).
- Jonsson, T. et al. Variant of TREM2 associated with the risk of Alzheimer's disease. *N. Engl. J. Med.* **368**, 107–116 (2013).
- Ellis, K. A. et al. The Australian Imaging, Biomarkers and Lifestyle (AIBL) study of aging: methodology and baseline characteristics of 1112 individuals recruited for a longitudinal study of Alzheimer's disease. *Int. Psychogeriatr.* **21**, 672–687 (2009).
- Porter, T. et al. A polygenic risk score derived from episodic memory weighted genetic variants is associated with cognitive decline in preclinical Alzheimer's disease. *Front. Aging Neurosci.* **10**, 423 (2018).

44. Sachdev, P. S. et al. The Sydney Memory and Ageing Study (MAS): methodology and baseline medical and neuropsychiatric characteristics of an elderly epidemiological non-demented cohort of Australians aged 70–90 years. *Int. Psychogeriatr.* **22**, 1248–1264 (2010).
45. Mather, K. A. et al. Genome-wide significant results identified for plasma apolipoprotein H levels in middle-aged and older adults. *Sci. Rep.* **6**, 23675 (2016).
46. Yengo, L. et al. Imprint of assortative mating on the human genome. *Nat. Hum. Behav.* **2**, 948–954 (2018).
47. Lee, S. H., Wray, N. R., Goddard, M. E. & Visscher, P. M. Estimating missing heritability for disease from genome-wide association studies. *Am. J. Hum. Genet.* **88**, 294–305 (2011).
48. Lee, S. H., Goddard, M. E., Wray, N. R. & Visscher, P. M. A better coefficient of determination for genetic profile analysis. *Genet. Epidemiol.* **36**, 214–224 (2012).
49. Niu, H., Alvarez-Alvarez, I., Guillen-Grima, F. & Aguinaga-Ontoso, I. Prevalence and incidence of Alzheimer's disease in Europe: a meta-analysis. *Neurologia* **32**, 523–532 (2017).
50. Bulik-Sullivan, B. K. et al. LD score regression distinguishes confounding from polygenicity in genome-wide association studies. *Nat. Genet.* **47**, 291–295 (2015).
51. Zeng, J. et al. Signatures of negative selection in the genetic architecture of human complex traits. *Nat. Genet.* **50**, 746–753 (2018).
52. Chang, D. et al. A meta-analysis of genome-wide association studies identifies 17 new Parkinson's disease risk loci. *Nat. Genet.* **49**, 1511–1516 (2017).
53. Wray, N. R. et al. Genome-wide association analyses identify 44 risk variants and refine the genetic architecture of major depression. *Nat. Genet.* **50**, 668–681 (2018).
54. Therneau, T. M. & Lumley, T. A Package for Survival Analysis in R. at <https://cran.r-project.org/package=survival> (2015).
55. Willer, C. J., Li, Y. & Abecasis, G. R. METAL: fast and efficient meta-analysis of genomewide association scans. *Bioinformatics* **26**, 2190–2191 (2010).
56. Joshi, P. K. et al. Variants near CHRNA3/5 and APOE have age- and sex-related effects on human lifespan. *Nat. Commun.* **7**, 11174 (2016).
57. Grambsch, P. M. & Therneau, T. M. Proportional hazards tests and diagnostics based on weighted residuals. *Biometrika* **81**, 515–526 (1994).
58. Fahrmeir, L. & Kaufmann, H. Consistency and asymptotic normality of the maximum likelihood estimator in generalized linear models. *Ann. Stat.* **13**, 342–368 (1985).
59. Canty, A. & Ripley, B. D. boot: Bootstrap R (S-Plus) Functions. (2020).
60. McLaren, W. et al. The ensembl variant effect predictor. *Genome Biol.* **17**, 122 (2016).

Acknowledgements

R.E.M. is supported by Alzheimer's Research UK grant ARUK-PG2017B-10. We thank all those who took part as a participant in the AIBL study for their commitment and dedication to helping advance research into the early detection and causation of AD. Funding for the AIBL study was provided in part by the study partners (Commonwealth Scientific Industrial and research Organization (CSIRO), Edith Cowan University (ECU), Mental Health Research institute (MHRI), National Ageing Research Institute (NARI), Austin Health and CogState Ltd). The AIBL study has also received support from the National Health and Medical Research Council (NHMRC) and the Dementia Collaborative Research Centres program (DCRC2), as well as funding from the Science and

Industry Endowment Fund (SIEF) and the Cooperative Research Centre (CRC) for Mental Health—funded through the CRC Program (Grant ID:20100104), an Australian Government Initiative. We acknowledge and thank the Sydney MAS participants, their supporters, and the Sydney MAS Research Team (current and former staff and students) for their contributions. Funding was awarded from the Australian National Health and Medical Research Council (NHMRC) Program Grants (350833, 568969, 109308). The authors from the University of Queensland are supported by the Australian National Health and Medical Research Council (1078037, 1078901, 1161356 and 1113400) and the Australian Research Council (FT180100186 and FL180100072). E.M. and A.M.G. are supported by NIH (U01AG058635 and U01AG052411).

Author contributions

P.M.V., A.F.M. and Q.Z. conceived and designed the study. Q.Z. performed simulations and statistical analyses under the assistance and guidance from J.S., R.E.M., L.Y., J.Y., N.R.W., A.F.M. and P.M.V. Q.Z., A.F.M. and P.M.V. wrote the manuscript with the participation of all authors. B.C.-D., M.J.W., A.M.G., E.M., K.-L.H., T.P., S.M.L., P.S.S., K.A.M., N.J.A., A.T. and H.B. contributed the data. Unless otherwise stated, AIBL consortium authors contributed but did not participate in analysis or writing of this report. All other authors reviewed and approved the final manuscript.

Competing interests

The authors declare no competing interests.

Additional information

Supplementary information is available for this paper at <https://doi.org/10.1038/s41467-020-18534-1>.

Correspondence and requests for materials should be addressed to P.M.V.

Peer review information *Nature Communications* thanks the anonymous reviewers for their contributions to the peer review of this work. Peer review reports are available.

Reprints and permission information is available at <http://www.nature.com/reprints>

Publisher's note Springer Nature remains neutral with regard to jurisdictional claims in published maps and institutional affiliations.



Open Access This article is licensed under a Creative Commons Attribution 4.0 International License, which permits use, sharing, adaptation, distribution and reproduction in any medium or format, as long as you give appropriate credit to the original author(s) and the source, provide a link to the Creative Commons license, and indicate if changes were made. The images or other third party material in this article are included in the article's Creative Commons license, unless indicated otherwise in a credit line to the material. If material is not included in the article's Creative Commons license and your intended use is not permitted by statutory regulation or exceeds the permitted use, you will need to obtain permission directly from the copyright holder. To view a copy of this license, visit <http://creativecommons.org/licenses/by/4.0/>.

© The Author(s) 2020

Australian Imaging Biomarkers and Lifestyle (AIBL) Study

Colin L. Masters¹⁴, Ashley I. Bush¹⁴, Christopher Fowler¹⁴, David Darby¹⁴, Kelly Pertile¹⁴, Carolina Restrepo¹⁴, Blaine Roberts¹⁴, Jo Robertson¹⁴, Rebecca Rumble¹⁴, Tim Ryan¹⁴, Steven Collins¹⁴, Christine Thai¹⁴, Brett Trounson¹⁴, Kate Lennon¹⁴, Qiao-Xin Li¹⁴, Fernanda Yevenes Ugarte¹⁴, Irene Volitakis¹⁴, Michael Vovos¹⁴, Rob Williams¹⁴, Jenalle Baker¹⁴, Alyce Russell⁷, Madeline Peretti⁷, Lidija Milicic⁷, Lucy Lim¹⁵, Mark Rodrigues¹⁵, Kevin Taddei¹⁵, Tania Taddei¹⁵, Eugene Hone¹⁵, Florence Lim¹⁵, Shane Fernandez¹⁵, Stephanie Rainey-Smith¹⁵, Steve Pedrini¹⁵, Ralph Martins¹⁵, James Doecke¹⁶, Pierrick Bourgeat¹⁶, Jurgen Frapp¹⁶, Simon Gibson¹⁶, Hugo Leroux¹⁶, David Hanson¹⁶, Vincent Dore¹⁷, Ping Zhang¹⁷, Samantha Burnham¹⁷, Christopher C. Rowe¹⁸,

Victor L. Villemagne¹⁸, Paul Yates¹⁸, Sveltana Bozin Pejoska¹⁸, Gareth Jones¹⁸, David Ames¹⁹, Elizabeth Cyarto¹⁹, Nicola Lautenschlager¹⁹, Kevin Barnham²⁰, Lesley Cheng²⁰, Andy Hill²⁰, Neil Killeen²¹, Paul Maruff²², Brendan Silbert²³, Belinda Brown²⁴, Harmid Sohrabi²⁴, Greg Savage²⁵ & Michael Vacher²⁶

¹⁴The Florey Institute, The University of Melbourne, Parkville, VIC 3052, Australia. ¹⁵School of Medical and Health Sciences, Edith Cowan University, Joondalup, WA, Australia. ¹⁶CSIRO, Herston, QLD 4029, Australia. ¹⁷CSIRO, Melbourne, VIC, Australia. ¹⁸Department of Molecular Imaging, Austin Health, Heidelberg, VIC 3084, Australia. ¹⁹National Ageing Research Institute, Parkville, VIC 3052, Australia. ²⁰Bio21 Institute of Molecular Science and Biotechnology, The University of Melbourne, Parkville, VIC 3052, Australia. ²¹The University of Melbourne, Parkville, VIC 3052, Australia. ²²Cogstate Ltd., Melbourne, VIC, Australia. ²³St. Vincent Hospital, Fitzroy, VIC 3065, Australia. ²⁴Department of Exercise Science, College of Science, Health, Engineering and Education, Murdoch University, Murdoch, WA, Australia. ²⁵Department of Psychology, Macquarie University, Sydney, NSW 2109, Australia. ²⁶CSIRO, Floreat, WA, Australia.