



University of Dundee

Reducing Glut2 throughout the body does not result in cognitive behaviour differences in aged male mice

Morrice, Nicola; van Aalten, Lidy; McNeilly, Alison; McCrimmon, Rory J.; Pearson, Ewan R.; Langston, Rosamund

Published in:
BMC Research Notes

DOI:
[10.1186/s13104-020-05276-y](https://doi.org/10.1186/s13104-020-05276-y)

Publication date:
2020

Document Version
Publisher's PDF, also known as Version of record

[Link to publication in Discovery Research Portal](#)

Citation for published version (APA):

Morrice, N., van Aalten, L., McNeilly, A., McCrimmon, R. J., Pearson, E. R., Langston, R., & Sutherland, C. (2020). Reducing Glut2 throughout the body does not result in cognitive behaviour differences in aged male mice. *BMC Research Notes*, 13, [438]. <https://doi.org/10.1186/s13104-020-05276-y>

General rights

Copyright and moral rights for the publications made accessible in Discovery Research Portal are retained by the authors and/or other copyright owners and it is a condition of accessing publications that users recognise and abide by the legal requirements associated with these rights.

- Users may download and print one copy of any publication from Discovery Research Portal for the purpose of private study or research.
- You may not further distribute the material or use it for any profit-making activity or commercial gain.
- You may freely distribute the URL identifying the publication in the public portal.

Take down policy

If you believe that this document breaches copyright please contact us providing details, and we will remove access to the work immediately and investigate your claim.

RESEARCH NOTE

Open Access



Reducing Glut2 throughout the body does not result in cognitive behaviour differences in aged male mice

Nicola Morrice¹, Lidy van Aalten¹, Alison McNeilly², Rory J. McCrimmon², Ewan R. Pearson³, Rosamund Langston² and Calum Sutherland^{1*}

Abstract

Objectives: GLUT2 is a major facilitative glucose transporter, expressed from the *SLC2A2* gene, with essential roles in the liver. Recent work in mice has shown that preventing Glut2 production in specific neuronal populations increases sugar-seeking behaviour, highlighting the importance of *Slc2a2* gene expression in the brain. It implies that reduced GLUT2 in the brain, due to genetic polymorphisms or disease, impacts health through behaviour change. Defects in glucose transport in the brain are observed in conditions including type-2 diabetes and dementia. Few studies have directly examined the effect of modulating neuronal glucose transporter expression on cognitive function. The aim of this study was to investigate whether inactivating one *Slc2a2* allele throughout the body had major effects on cognition. Cognitive tests to assess recognition memory, spatial working memory and anxiety were performed in *Slc2a2* whole-body heterozygous mice (i.e. reduced Glut2 mRNA and protein), alongside littermates expressing normal levels of the transporter.

Results: No significant effects on neurological functions and cognitive capabilities were observed in mice lacking one *Slc2a2* allele when fed a chow diet. This suggests that the minor variations in GLUT2 levels that occur in the human population are unlikely to influence behaviour and basic cognition.

Keyword: Glucose, GWAS, Diabetes, GLUT2, Neuronal function

Introduction

Maintenance of glucose homeostasis is essential for survival and this is dependent on the action of cellular glucose transporters [1–5]. A major class of glucose transporters are the GLUT (glucose transporter) family, which transport glucose across the plasma membrane via facilitative diffusion [6]. GLUT2, a low affinity, high occupancy family member, is the major glucose transporter in the liver, where it is required for appropriate glucose uptake by hepatocytes, while in mice Glut2 also has an

essential role in glucose-stimulated insulin secretion in the pancreas [6, 7].

Mutations in the human *SLC2A2* gene (which encodes for GLUT2 protein) cause Fanconi-Bickel syndrome (hepatomegaly and renal disease) and have been rarely found as a cause of neonatal diabetes. Genome-wide association studies indicate that *SLC2A2* sequence variation associates with risk of fasting hyperglycaemia, progression to type 2 diabetes, hypercholesterolaemia and cardiovascular diseases. We previously showed that single nucleotide polymorphisms (SNPs) found at the *SLC2A2* locus, that result in reduced *SLC2A2* gene expression, are associated with increased glycaemic response to the major diabetes therapeutic, metformin [8]. The importance of this transporter is illustrated by

*Correspondence: c.d.sutherland@dundee.ac.uk

¹ Division of Cellular Medicine, School of Medicine, University of Dundee, Ninewells Hospital and Medical School, James Arnott Drive, Dundee DD1 9SY, UK

Full list of author information is available at the end of the article



the fact that *Glut2* null mice are not viable [6], while deletion of *Slc2a2* expression in neurons of the paraventricular nucleus results in increased sucrose-seeking behaviour in mice [9]. This latter finding suggests that *Glut2* levels have a major influence on neuronal function. While most glucose transport in the brain is mediated through GLUT1 and GLUT3, there is intriguing evidence that specific neuronal populations have a reliance on *Glut2* that makes them more vulnerable to pathogenic mechanisms underlying Alzheimer's disease [10, 11]. In addition, defective glucose transport is observed in Alzheimer's disease [12]. However, there has been limited investigation into how altered glucose transporter expression in the brain directly impacts upon behaviour and cognition. The aim of the study presented here was to examine the effects of reducing *Glut2* production in the brain on behaviour and basic cognition in mice. We generated a mouse with a whole-body reduction in *Glut2* (*Slc2a2*^{+/-}), which models the changes in GLUT2 expression caused by common SNPs found within the human gene.

Main text

Animal procedures

All animal care protocols and experimental procedures were performed in accordance with the UK Home Office Animal Scientific Procedures Act (1986), the European Directive of the Protection of Animals used for Scientific Purposes 2010/ 63/ E, and with the approval of the University of Dundee Animal Ethics Committee. All personnel performing procedures are holders of UK Home Office personal licences. Work was performed under Home Office licence PE82c1898.

Slc2a2^{+/-} cryopreserved mouse sperm (C57BL/6 N-*Slc2a2*<tm1b(KOMP)Wtsi>/B08, Riken reference number RBRC06334) was purchased from the Riken BioResource Center (Tsukuba, Ibaraki, Japan) and used to generate pups via in vitro- fertilisation (IVF) using C57BL/6 wild-type (WT) females (C57BL/6J, JAXTM, strain code 632, bred and maintained from the original JAX strain code 000,664; this strain was introduced to Charles River Laboratories France in 1981 and UK in 2004. Breeding is in accordance with The Jackson Laboratory genetic management system. Breeding pairs were purchased from Charles River, Elphinstone, Tranent, Scotland, UK, and a colony maintained within the University of Dundee Resource Unit). Resultant *Slc2a2*^{+/-} animals were crossed with this same C57BL/6J WT strain to obtain *Slc2a2*^{+/+} (littermate controls) and *Slc2a2*^{+/-} pups.

For experimental procedures male *Slc2a2*^{+/+} (n=8) and *Slc2a2*^{+/-} (n=13) littermates were group housed (max 4 per cage- mixed genotype housing) and

maintained at 21 °C with 12-h light/ dark cycle and had ad libitum access to water and standard chow diet (SDS Ltd, Witham, Essex, UK). Animals were weighed regularly from age 10 weeks. Behavioural tests were performed as per schematic in Additional file 1: Figure S1 in the morning of test days (before 12 pm). At week 48, animals were killed by exposure to a rising concentration of CO₂ followed by cervical dislocation, following a 5 h fast. Fasted trunk blood sample was collected, after culling, into a lithium-heparin blood tube (BD, Wokingham, Basingstoke, England, UK), incubated at room temperature for 30 min and spun at 4 °C at 7500 rpm for 15 min. Collected blood serum was used to determine fasted insulin levels by enzyme-linked immunosorbent assay (ELISA; Crystal Chem, Elk Grove Village, IL, USA) to manufacturers' instructions. Fasting insulin resistance index (FIRI) was calculated as standard ((fasting insulin × fasting glucose)/25) [13]. Behavioural data was captured using a Handycam HDR-CX405 camcorder (Sony, Minato City, Tokyo, Japan) and with Anymaze 6.4 software (Stoelting Co., Wood Dale, IL, USA). Data was analysed using Prism 8 (Graphpad) and are presented as mean ± SEM and compared as indicated in relevant figure legends.

There are no physiological differences between *Slc2a2*^{+/+} and *Slc2a2*^{+/-} animals maintained on chow diet

Animals were maintained on chow diet up to 48 weeks of age. No significant differences were noted in body mass between *Slc2a2*^{+/+} and *Slc2a2*^{+/-} groups (Additional file 1: Figures S2A and B), although there was a trend for increased weight gain in *Slc2a2*^{+/-} animals (Additional file 1: Fig. S2C; p=0.0597, t=2.003, df=19). There were no significant differences between the mean fasting blood glucose (FBG) levels (Additional file 1: Figure 2D), circulating insulin levels (Additional file 1: Figure S2E) or FIRI (Additional file 1: Figure S2F) of the *Slc2a2*^{+/-} and *Slc2a2*^{+/+} animals at 48 weeks of age. These results show that inactivating an allele of *Slc2a2* does not affect body mass or glucose homeostasis in animals receiving chow diet.

Inactivating one allele of *Slc2a2* does not affect spatial working memory in male mice

To examine effects on spatial working memory, animals were tested using the T-Maze spontaneous alternation task at 18 weeks (Additional file 1: Figure S1A). Animals were allowed to spontaneously explore the maze for 15 individual trials (returning to start at the end of each test of each trial by themselves). No significant differences were observed between the two groups in the percentage alternation (Fig. 1a), which both groups performed above the level of chance (50%, as indicated by blue

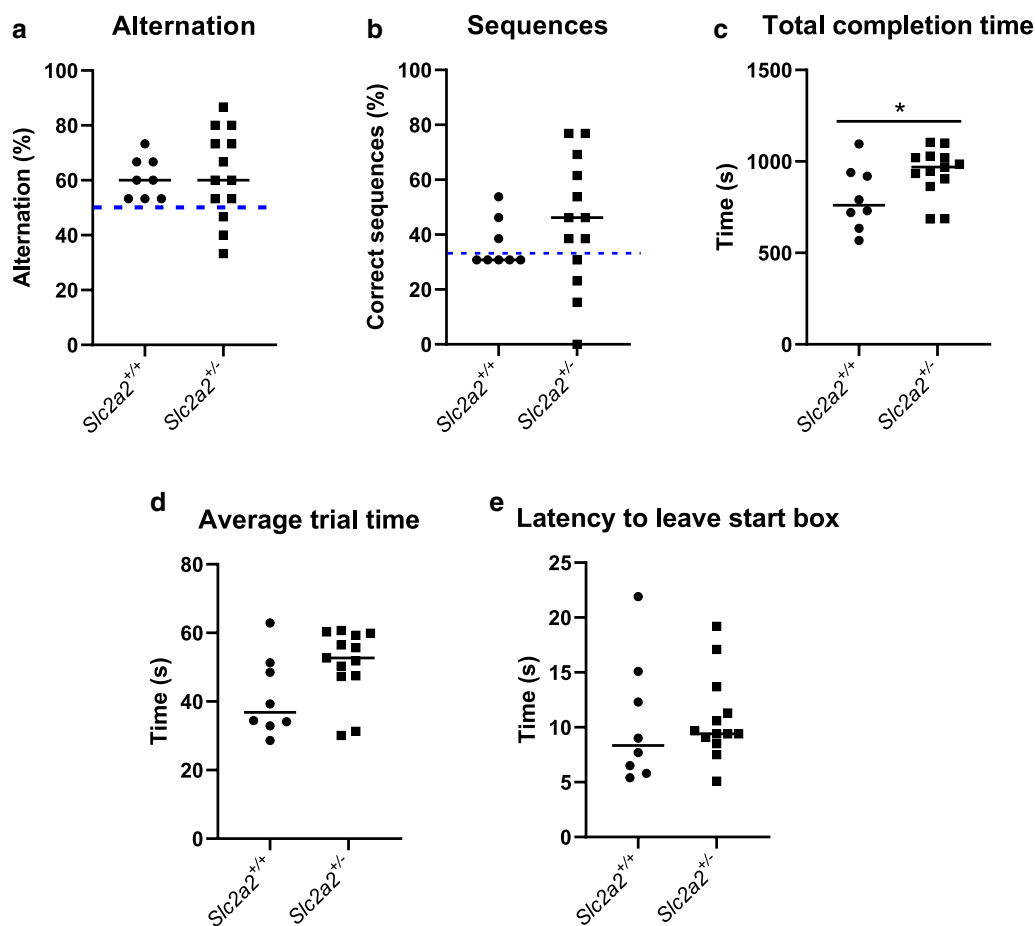


Fig. 1 Inactivating one allele of *Slc2a2* does not affect spatial working memory in male mice. **a** Percentage alternations per group. Test performed at week 18. Blue dashed line indicates level of chance (50%). Both groups performed above level of chance: *Slc2a2*^{+/+} $p=0.0047$, $t=4.071$, $df=7$ and *Slc2a2*^{+/-} $p=0.0214$, $t=2.645$, $df=12$ (1 sample t-test). **b** Percentage LRL/RLR sequences per group. Blue dashed line indicated level of chance (33%). Neither group performed above level of chance: *Slc2a2*^{+/+} $p=0.3365$, $t=1.033$, $df=7$ and *Slc2a2*^{+/-} $p=0.1150$, $t=1.700$, $df=12$ (1 sample t-test). **c** Total time to complete 15 trials of the test: $p=0.0472$, $t=2.122$, $df=19$. **d** Average time per trial. **e** Average latency to leave start box

dashed line). Both groups performed poorly in the number of Left–Right–Left or Right–Left–Right sequences performed (Fig. 1b), which were not performed above the level of chance (33%, indicated by blue dashed line). *Slc2a2*^{+/-} animals took a significantly longer amount of time to complete 15 trials of the test (Fig. 1c), with longer mean trial time (Fig. 1d) but no differences in the latency to leave the start box during each of the 15 trials before they explored the rest of the maze (Fig. 1e). Overall, these results suggest that inactivating one allele of *Slc2a2* has no effects on spatial working memory in mice.

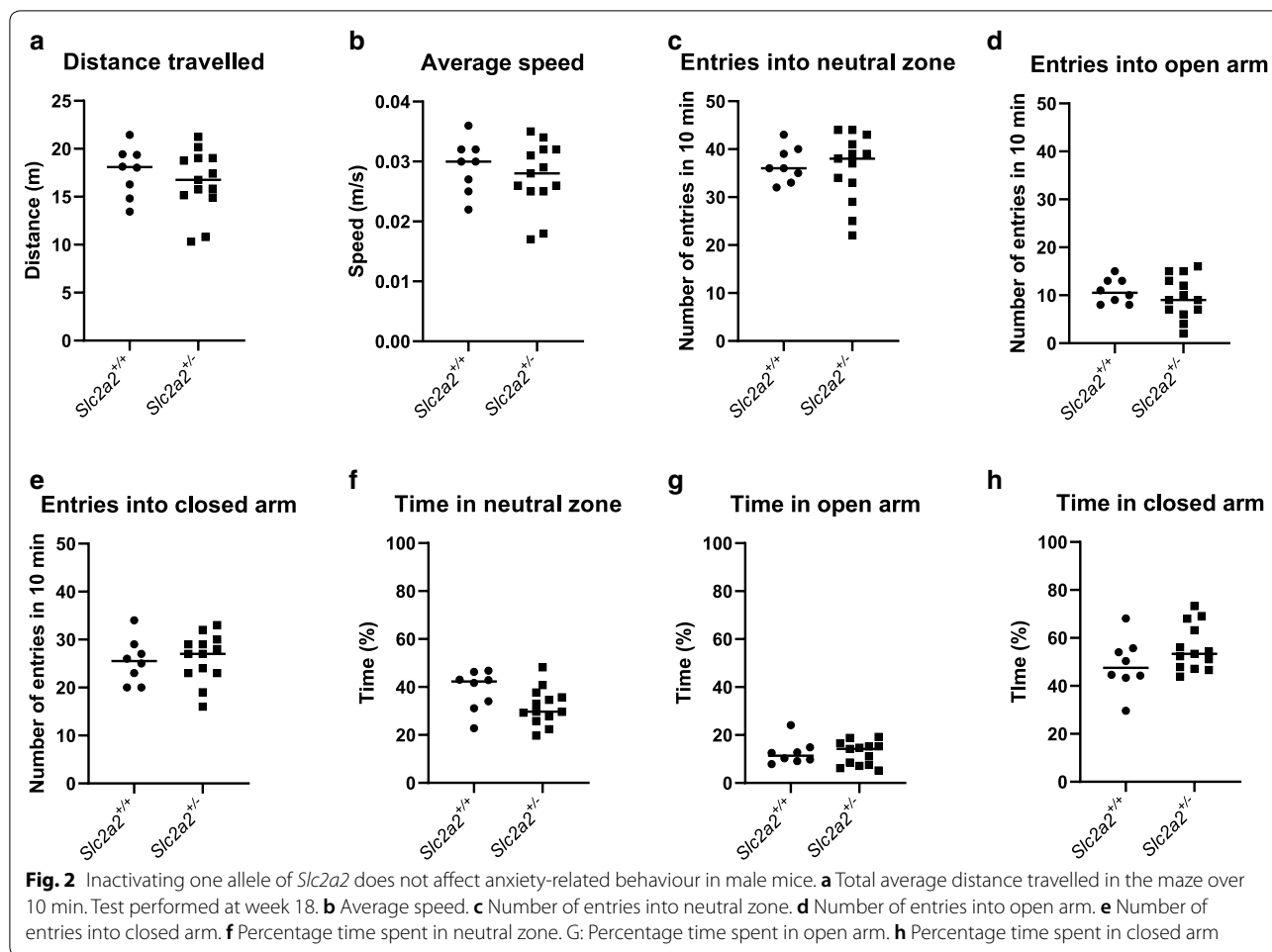
Inactivating one allele of *Slc2a2* does not affect anxiety behaviour in male mice

To further investigate potential behaviour differences between the two groups, animals were tested with the elevated plus maze at the age of 18 weeks (Additional

file 1: Figure S1B) to assess anxiety-related behaviours. No differences were observed between the two groups in any of the elevated plus maze measurements: distance travelled (Fig. 2a), average speed (Fig. 2b), number of entries into the different areas of the maze: neutral zone (Fig. 2c), open arm (Fig. 2d) and closed arm (Fig. 2e) or the percentage time spent within each zone (Fig. 2f–h). This suggests that inactivating one allele of *Slc2a2* has no effects on anxiety-related behaviours.

Inactivating one allele of *Slc2a2* does not affect recognition memory in male mice

The novel object recognition (NOR) test is an established procedure to assess recognition memory [14]. Animals were assessed using both a 2 min and a 24 h NOR (as per Additional file 1: Figure S1C). No significant differences were observed during the 2 min NOR conducted

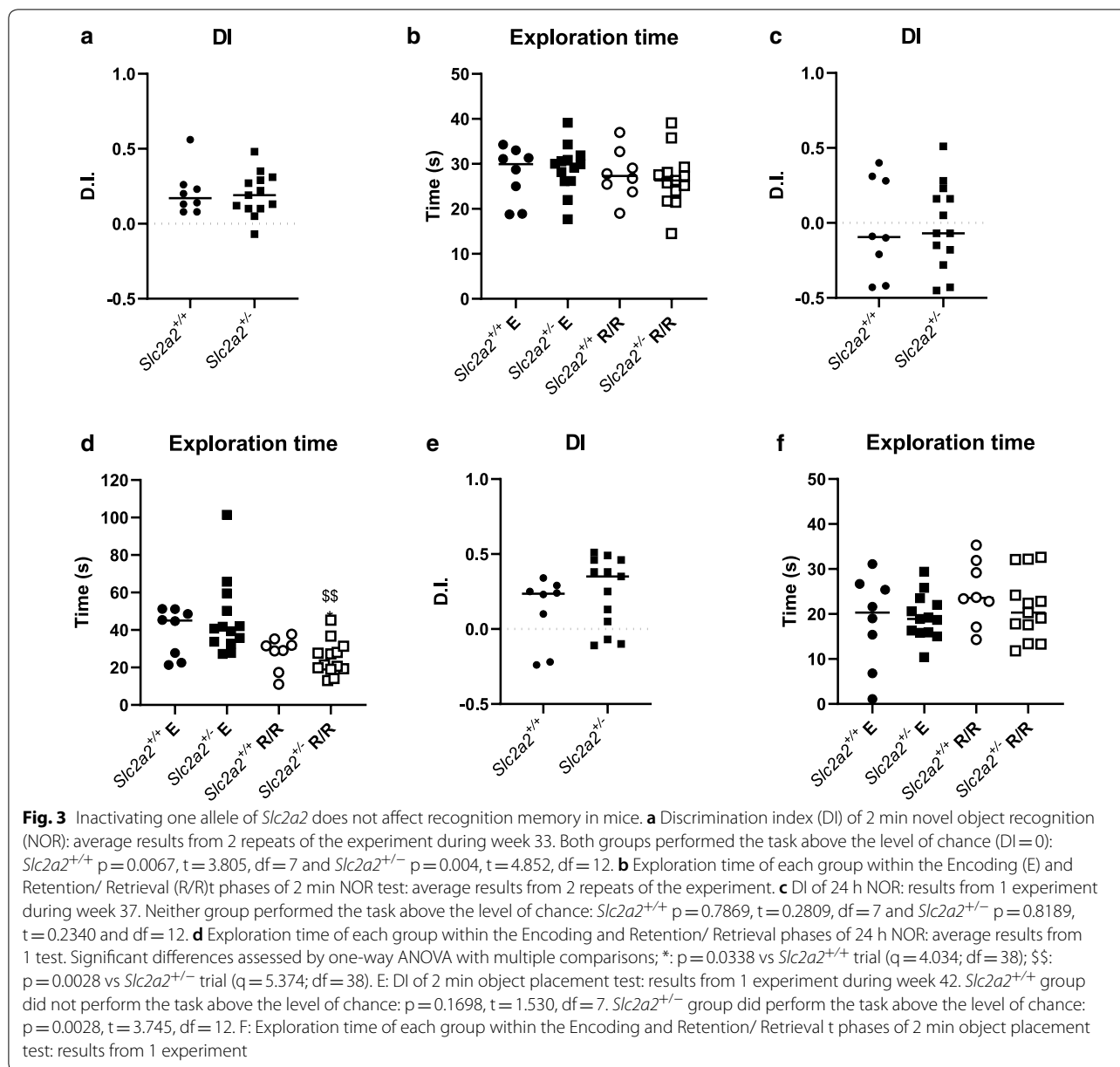


at 33 weeks between *Slc2a2*^{+/+} and *Slc2a2*^{+/-} groups in the discrimination index (the difference in time spent exploring novel and familiar objects; DI- Fig. 3a) or in the total time spent exploring the objects in either the encoding or retention/ retrieval phases of the tests (Fig. 3b). Both groups performed the task above the level of chance (DI of 0, meaning animals spent equal amounts of time exploring objects in the retention/ retrieval phase of the task). However, both groups performed equally poorly in discriminating between objects during the 24 h NOR conducted at 37 weeks (Fig. 3c; neither group performed above the level of chance). *Slc2a2*^{+/-} animals, though, did spend less total time exploring the objects during the 10 min retention/retrieval phase of this task compared to the encoding phases (Fig. 3d). To revisit the spatial memory domain in the animals (as explored during the T-maze task), the object location test was also performed at 42 weeks (Additional file 1: Figure S1D). Again, no differences were observed between the two groups in either DI (Fig. 3e) or total exploration time measurements (Fig. 3f), however, the *Slc2a2*^{+/+} group did not perform

the task above the level of chance and so it is difficult to draw clear conclusions from this task. Overall, these results show that inactivating one allele of *Slc2a2* has no effect on non-spatial recognition memory in mice.

Conclusions

Most human diseases, especially chronic, age-related disease, present with minor changes in molecular pathways, which make an individual more vulnerable to environmental insults. This can be due to SNPs in key genes, that have a minor effect on the expression or function of that gene product. We have previously reported that SNPs in the GLUT2 gene (*Slc2a2*) influence response to the main drug for type 2 diabetes. Our results presented here show that minor alterations in Glut2 expression, such as those associated with specific SNPs within the human gene, are unlikely to influence “spontaneous memory and anxiety behaviours”. However, to establish the influence on response to



challenges, such as poor nutrition, disease or infection, will require additional studies.

Limitations

There are a number of limitations to the work presented in this study. Firstly, the tests were performed only on male animals [15]. Also, the animals in this study were on a regular chow diet and it is possible that effects of reduced Glut2 on cognition may be more pronounced in animals with perturbed glucose homeostasis. Future studies should include diet-induced obese animals, or animals with diabetes, to further investigate such

influences. This study was designed to model the effects of common SNPs within the human population, which result in altered levels of GLUT2 expression. In this study, the removal of only one *Slc2a2* allele resulted in an approximately 30% reduction in *Slc2a2* mRNA expression (data not shown), similar to some changes in mRNA seen with specific SNPs in the human population. In contrast, the neuron-specific studies performed by Labouebe and colleagues, which resulted in changes to sucrose-seeking behaviour were performed with complete lack of Glut2 in those cells [9]. It is therefore possible that any influence of this transporter on behaviour only becomes

apparent when the receptor is more dramatically perturbed. Equally, the group sizes in our study are relatively small and not powered to detect small changes. Finally, the behaviour tasks used in the Labouebe study were reward-based operant conditioning tasks, compared to the spontaneous behaviour tasks used within the study presented here, which make direct comparisons more difficult. Any future work would benefit from establishing sucrose preference to test the effects of Glut2 deficiency within hypothalamic circuits but differentiating from hippocampal circuitry by maintaining separation between food motivation and cognitive testing [16]. Glut2 expression in the brain is predominantly in the astrocytes, with only limited expression within specific neuronal populations [17]. A more comprehensive analysis of the effect of neuronal Glut2 deletion on glucose uptake and metabolism across the brain would inform a more targeted approach to dissect the role of this transporter in behaviour and cognition.

Supplementary information

Supplementary information accompanies this paper at <https://doi.org/10.1186/s13104-020-05276-y>.

Additional file 1. Additional figures.

Abbreviations

DI: Discrimination index; ELISA: Enzyme-linked immunosorbent assay; FBG: Fasting blood glucose; FIRI: Fasting insulin resistance index; IVF: *In-vitro* Fertilisation; GLUT: Glucose transporter; NOR: Novel object recognition; SNP: Single nucleotide polymorphism.

Acknowledgements

The authors would like to thank Professor Bernard Thorens (University of Lausanne, Lausanne, Switzerland) for advice and supply of reagents.

Authors' contributions

NM, RL and CS planned experiments. NM conducted experiments with assistance from AM and LvA. NM, RL and CS drafted the manuscript and analysed the data. EP, RM and CS lead the study and all authors provided input on the manuscript. All authors read and approved the final manuscript.

Funding

This study was supported by Diabetes UK project Grant 16/0005487 to CS, RM and EP, and an ARUK Scotland Network small grant to NM, RS and CS.

Availability of data and materials

The raw data for this project is available upon request through the corresponding author.

Ethics approval and consent to participate

All animal care protocols and experimental procedures were performed in accordance with the UK Home Office Animal Scientific Procedures Act (1986), the European Directive of the Protection of Animals used for Scientific Purposes 2010/63/E, and with the approval of the University of Dundee Animal Ethics Committee. All personnel performing procedures are holders of UK Home Office personal licences.

Consent for publication

Not applicable.

Competing interests

The authors declare that they have no competing interests.

Author details

¹ Division of Cellular Medicine, School of Medicine, University of Dundee, Ninewells Hospital and Medical School, James Arnott Drive, Dundee DD1 9SY, UK. ² Division of Systems Medicine, School of Medicine, University of Dundee, Ninewells Hospital and Medical School, James Arnott Drive, Dundee DD1 9SY, UK. ³ Division of Population Health and Genomics, School of Medicine, University of Dundee, Ninewells Hospital and Medical School, James Arnott Drive, Dundee DD1 9SY, UK.

Received: 25 June 2020 Accepted: 9 September 2020

Published online: 16 September 2020

References

- Saltiel AR, Kahn CR. Insulin signalling and the regulation of glucose and lipid metabolism. *Nature*. 2001;414(6865):799–806.
- Wasserman DH, Ayala JE. Interaction of physiological mechanisms in control of muscle glucose uptake. *Clin Exp Pharmacol Physiol*. 2005;32(4):319–23.
- Moore MC, Coate KC, Winnick JJ, An Z, Cherrington AD. Regulation of hepatic glucose uptake and storage in vivo. *Adv Nutr*. 2012;3(3):286–94.
- Roder PV, Wu B, Liu Y, Han W. Pancreatic regulation of glucose homeostasis. *Exp Mol Med*. 2016;48:e219.
- Tups A, Benzler J, Sergi D, Ladyman SR, Williams LM. Central Regulation of Glucose Homeostasis. *Compr Physiol*. 2017;7(2):741–64.
- Thorens B, Mueckler M. Glucose transporters in the 21st Century. *Am J Physiol Endocrinol Metab*. 2010;298(2):E141–145.
- Thorens B. GLUT2, glucose sensing and glucose homeostasis. *Diabetologia*. 2015;58(2):221–32.
- Zhou K, Yee SW, Seiser EL, van Leeuwen N, et al. Variation in the glucose transporter gene SLC2A2 is associated with glycemic response to metformin. *Nat Genet*. 2016;48(9):1055–9.
- Labouebe G, Boutrel B, Tarussio D, Thorens B. Glucose-responsive neurons of the paraventricular thalamus control sucrose-seeking behavior. *Nat Neurosci*. 2016;19(8):999–1002.
- Plaschke K, Kopitz J, Siegelin M, Schliebs R, et al. Insulin-resistant brain state after intracerebroventricular streptozotocin injection exacerbates Alzheimer-like changes in Tg2576 AbetaPP-overexpressing mice. *J Alzheimers Dis*. 2010;19(2):691–704.
- Knezovic A, Loncar A, Homolak J, Smailovic U, et al. Rat brain glucose transporter-2, insulin receptor and glial expression are acute targets of intracerebroventricular streptozotocin: risk factors for sporadic Alzheimer's disease? *J Neural Transm (Vienna)*. 2017;124(6):695–708.
- Wijesekara N, Goncalves RA, De Felice FG, Fraser PE. Impaired peripheral glucose homeostasis and Alzheimer's disease. *Neuropharmacology*. 2018;136(Pt B):172–81.
- Duncan MH, Singh BM, Wise PH, Carter G, Alagband-Zadeh J. A simple measure of insulin resistance. *Lancet*. 1995;346(8967):120–1.
- Lueptow LM. Novel Object Recognition Test for the Investigation of Learning and Memory in Mice. *J Vis Exp* 2017(126).
- Mauvais-Jarvis F. Gender differences in glucose homeostasis and diabetes. *Physiol Behav*. 2018;187:20–3.
- Serchov T, van Calker D, Biber K. Sucrose preference test to measure anhedonic behaviour in mice. *Bio-Protocol*. 2016;6:19.
- Leloup C, Arluison M, Lepetit N, Cartier N, et al. Glucose transporter 2 (GLUT 2): expression in specific brain nuclei. *Brain Res*. 1994;638(1–2):221–6.

Publisher's Note

Springer Nature remains neutral with regard to jurisdictional claims in published maps and institutional affiliations.