

SCIENTIFIC REPORTS

OPEN

Iodine source apportionment in the Malawian diet

M. J. Watts¹, E. J. M. Joy^{1,2}, S. D. Young², M. R. Broadley², A. D. C. Chilimba³, R. S. Gibson⁴, E. W. P. Siyame⁵, A. A. Kalimbira⁵, B. Chilima⁶ & E. L. Ander¹

Received: 19 May 2015

Accepted: 04 September 2015

Published: 27 October 2015

The aim of this study was to characterise nutritional-I status in Malawi. Dietary-I intakes were assessed using new datasets of crop, fish, salt and water-I concentrations, while I status was assessed for 60 women living on each of calcareous and non-calcareous soils as defined by urinary iodine concentration (UIC). Iodine concentration in staple foods was low, with median concentrations of 0.01 mg kg⁻¹ in maize grain, 0.008 mg kg⁻¹ in roots and tubers, but 0.155 mg kg⁻¹ in leafy vegetables. Freshwater fish is a good source of dietary-I with a median concentration of 0.51 mg kg⁻¹. Mean Malawian dietary-iodine intake from food, excluding salt, was just 7.8 µg d⁻¹ compared to an adult requirement of 150 µg d⁻¹. Despite low dietary-I intake from food, median UICs were 203 µg L⁻¹ with only 12% defined as I deficient whilst 21% exhibited excessive I intake. Iodised salt is likely to be the main source of dietary I intake in Malawi; thus, I nutrition mainly depends on the usage and concentration of I in iodised salt. Drinking water could be a significant source of I in some areas, providing up to 108 µg d⁻¹ based on consumption of 2 L d⁻¹.

Approximately 2 billion people are estimated to be at risk of iodine deficiency disorders (IDD) worldwide, including 240 million school aged children (SAC)¹. Whilst I deficiency can affect any age group through impaired thyroid metabolism, the most severe consequences occur during foetal and early childhood development. IDDs can manifest as goitre and impaired cognitive development, with I deficiency during pregnancy and lactation the leading cause of mental retardation in infants²⁻⁵. The Recommended Nutrient Intake (RNI) is the dietary intake of a micronutrient that is likely to be adequate for 97.5% of individuals in an age- and sex-specific group and has been set at 120, 150 and 200 µg capita⁻¹ d⁻¹ for children, adults and pregnant women, respectively⁶. When studying the adequacy of nutrient supply at population levels, the Estimated Average Requirement (EAR) is preferred, i.e. 64, 107 and 143 µg capita⁻¹ d⁻¹, for children, adults and pregnant women, respectively^{6,7}. Excessive intake of I may cause hyper- or hypo-thyroidism, euthyroid goitre or thyroid autoimmunity^{8,9}. The Tolerable Upper Limit (TUL) is the level of dietary intake at which no evidence of toxicity is demonstrable¹⁰ and has been set for adults at 600 and 1,100 µg capita⁻¹ d⁻¹ in the EU and USA, respectively^{3,11} while it is recommended that those consuming supplements should avoid a dietary intake > 500 µg d⁻¹ of I¹¹.

The I status of populations can be quantified based on prevalence of goitres and, by this measure, the global incidence of IDD increased by 32% between 1993 and 2003^{2,6}. Alternatively, a population's I status may be quantified based on urinary I concentration (UIC). Over 90% of ingested I rapidly appears in the urine, thus urine provides a reliable biomarker of recent I intake and is a common method for assessment of individual status owing to ease and cost effectiveness of collection¹². A population's I status is defined as 'inadequate' if the median UIC is < 100 µg L⁻¹¹³. Since 2003, the World Health Organisation (WHO), International Council Control Iodine Deficiency Disorders (ICCIDD) and United Nations Children

¹Inorganic Geochemistry, Centre for Environmental Geochemistry, British Geological Survey, Nottingham, NG12 5GG, UK. ²School of Biosciences, University of Nottingham, Sutton Bonington Campus, Loughborough, LE12 5RD, UK. ³Ministry of Agriculture, Irrigation and Water Development, Lunyangwa Research Station, PO Box 59, Malawi. ⁴University of Otago, PO Box 56, Dunedin, New Zealand. ⁵Department of Home Economics and Human Nutrition, Bunda College, Lilongwe University of Agriculture and Natural Resources, PO Box 219, Lilongwe, Malawi. ⁶Community Health Sciences Unit, Ministry of Health, Private Bag 65, Lilongwe, Malawi. Correspondence and requests for materials should be addressed to M.J.W. (email: mwatts@bgs.ac.uk)

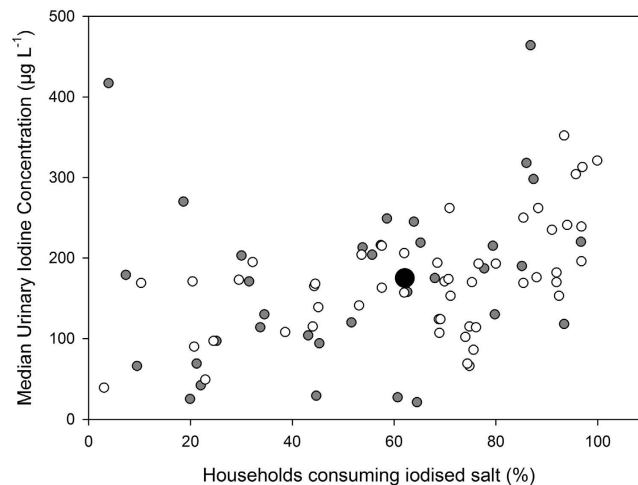


Figure 1. Median UIC as a function of the proportion (%) of households consuming adequately iodised salt. Country data is from the Global Iodine Scorecard 2014. Red squares indicate countries in Africa, black dots are other continents.

Fund (UNICEF) have used the median UIC of SAC to update nationally representative data on the I status of the general population as SAC are convenient to reach through school based surveys¹³. A decrease in I-deficient countries from 110 in 1993 to 32 in 2012 has been reported, due mainly to the use of iodised salt¹⁴. Andersson *et al.* (2012)¹ calculated 241 million SAC to be at risk of IDD in 2011, which extrapolates to 1.88 billion people globally and this represents a decrease of 6.4% since 2007.

The greatest prevalence, of I deficiency among SAC is 39.3% (58 million) in Africa. In Malawi, 35% of the national population, using extrapolation of UIC among SAC to update previous survey data, still present a UIC of $<100\mu\text{gL}^{-1}$ ¹⁵, whilst the 2010 Malawi Demographic and Health Survey¹⁶ reported that 62% of households were consuming adequately iodised salt, defined as I concentration $>15\text{mgkg}^{-1}$. Often the success of a salt iodisation strategy is limited by cultural and economic factors, where there is a lack of consistent and sustained monitoring of iodised salt¹. Another complication is that up to 90% of I in iodised salt is lost from production to cooking¹⁷. This might partly explain why there is only a weak correlation between the use of iodised salt and prevalence of UIC $<100\mu\text{gL}^{-1}$ for all countries listed in the Global Scorecard¹ ($R^2 = 0.13$; Fig. 1). However, when I is assimilated into foodstuffs, its bioavailability can be up to 99%¹⁸.

Iodine deficiency can occur in populations who depend on locally sourced food from regions of low soil-I concentration owing to the parent material and poor retention of I in soil influenced by soil pH, redox potential, texture, soil organic matter (OM), oxides of iron (Fe) and aluminium (Al), clay content and mineralogy¹⁹. Most soil I is derived from methylated forms which are volatilised from seawater and transferred to the soil-plant system via rainfall or dust deposition²⁰. The fixation of I in soil has a major role in controlling I availability to plants^{19,21}. Transformation of inorganic to organic forms of I plays an important role in I immobilisation, especially in the soil-water system²². Anionic/oxyanionic I species (e.g. I^- , IO_3^-) are likely to be fixed rapidly into inert humus-bound forms and/or inorganic colloids (e.g. Fe/Al hydrous oxides), in addition to losses through leaching or volatilisation^{23–25}. Loss of I from the soil solution as iodide is more rapid (minutes-hours) than iodate (hours-days)²¹. Whitehead (1984)²⁶ reported that only a small proportion of soil-I in humid temperate regions is soluble in water. The relative importance of these processes has not yet been studied directly in tropical soils. The proportion of soil-I that is water soluble and therefore mobile and available for plant uptake varies greatly depending on soil type, e.g. 2% in soils from Pakistan²⁷, 10% in soils from the UK and Morocco^{28,29} and up to 42% in soils from Argentina³⁰. Worldwide, the mean total I concentration in soils is 3.0mgkg^{-1} and most locally grown foods from areas other than coastal regions will not contain sufficient I to meet dietary requirements^{31,32}. Resolving I fixation rates in tropical soils would inform management strategies for optimising the supply of these elements to crops and livestock, for example, via irrigation^{33–38}, breeding³⁹ or livestock salt licks⁴⁰.

Adequacy of dietary element supplies for small population groups can be quantified through direct analysis of composite diets or by matching food consumption data from dietary recall with composition data^{41–43}. For larger population groups, food consumption data can be derived from household surveys or Food Agriculture Organisation (FAO) Food Balance Sheets (FBSs)^{44–49}. Provided that there are accurate and locally-relevant food composition data, quantifying dietary I intakes at the national level can support the monitoring of population I status and inform public health policies to address deficiency.

Locally generated food composition I data are not available for many countries worldwide, including Malawi. Compared to elements such as Fe, with concentrations in the parts-per-million (mg kg^{-1}) range which can be analysed by atomic absorption spectrometry, the I content in food matrices is typically present in the parts-per-billion ($\mu\text{g kg}^{-1}$) range and requires more sophisticated and expensive techniques such as Inductively-Coupled Plasma Mass Spectrometry (ICP-MS)⁵⁰. Also, sample preparative factors such as drying temperature and extraction procedure are more critical for I than for most elements owing to the volatility of I and its instability in acid matrices⁵¹. In this study, the I concentrations of commonly consumed food crops from a range of soil types in Malawi were determined to create a national composition database. Composition data were matched to FBS items to quantify the national average dietary I supply. This approach was compared to other metrics for estimating I status at a population level, including UIC and salt iodisation measurements. In addition, the effects of food-based and agricultural interventions on dietary I supply were modelled. An evaluation of the prevalence of I deficiency in Malawi using these different approaches and possible intervention strategies are discussed.

Results

All data are reported as median (Q1, Q3), unless stated otherwise. Crop and fish data are presented as dry weight (DW). Soil and plant samples were collected across a range of soil types in Malawi with calcareous and non-calcareous characteristics⁴⁸ (Table 1; Fig. 2).

Soil iodine concentrations. Total soil-I concentration was 2.06 mg kg^{-1} (1.18, 3.35; $n = 92$), while total I concentrations were similar in calcareous and non-calcareous soils and were, respectively: 1.95 mg kg^{-1} (1.28, 2.65; $n = 41$) and 2.45 mg kg^{-1} (1.11, 5.07; $n = 49$; Supplementary Table 1). Concentrations of water-extractable I (with deionised water) were similar between soil types: 0.027 mg kg^{-1} (0.014, 0.042; $n = 26$) and 0.022 (0.011, 0.032; $n = 32$) for calcareous and non-calcareous soils, respectively. Total soil-I concentration showed a negative correlation with pH ($R^2 = -0.27$) but a positive correlation with organic matter (OM; $R^2 = 0.57$). Water-extractable I showed no correlation with pH while the correlation with OM was weaker than for total I ($R^2 = 0.16$). Iodine and Se exhibited a positive correlation ($R^2 = 0.73$) which may suggest either a common source or simply a reliance on similar soil characteristics for adsorption and retention.

Food crop and fish iodine concentrations. Maize is the principal staple crop in Malawi supplying >60% of dietary energy intake⁵⁵; the median concentration of I in maize grain was just 0.01 mg kg^{-1} (<0.005 , 0.009; $n = 82$, Supplementary Table 2). The median I concentration was also low in the food group 'Roots and tubers', 0.008 mg kg^{-1} (<0.005 , 0.015; $n = 27$) but was greater in leafy vegetables, 0.155 mg kg^{-1} (0.087, 0.250; $n = 151$). The ranges of I concentrations in the plant tissues analysed were <0.005 –1.82, <0.005 –0.165, 0.01–0.11, <0.005 –0.13, <0.005 –0.21, <0.005 –0.039, for leaves, grains, pods, seeds, fruits and roots, respectively. Paired soil and plant samples demonstrated no correlation between the I concentration of soil and crops (Table 2; Supplementary Table 3). Fish data from 12 samples had a median I concentration of 0.51 mg kg^{-1} (0.37, 0.87; Supplementary Table 4), despite being sourced from freshwater in Lake Malawi and the Shire River. The greatest concentration of I was found in coconut flesh (5 mg kg^{-1} ; $n = 1$).

Influence of soil factors on food crop iodine concentrations. Previous studies have reported an influence of soil type on elemental concentrations in maize grain and diet composites in Malawi, including Se, Fe and Zn^{41,43,48,52}. However, no relationship was observed in this study for paired soil-plant samples between key soil chemical parameters or soil type and plant-I concentration using analysis of variance. For the paired soil-plant samples, soil pH ranged from 4.8 to 8.5, with OM (% LOI) 0.7 to 12.9 (median 2.8; Supplementary Table 3). Water extractable (mobile) soil-I expressed as a percentage of total soil-I (0.2–4.7%) showed no link when correlated with overall plant-I concentrations ($R^2 = 0.018$). Soil OM (% LOI) provided a similarly poor relationship with water extractable soil-I ($R^2 = 0.043$), whilst soil pH provided a stronger correlation ($R^2 = 0.5476$) with a positive, albeit weak soil-I (total) relationship with water extractable soil-I ($R^2 = 0.249$). These observations are supported by Bowley (2013)²¹ who reported little uptake of I into grass from soil or from I-129 labelled rainwater (simulated) via the roots, but most likely an increase in plant-I concentrations *via* surface deposition. Weng *et al.* (2009)⁵³ reported that soil can provide a low but stable level of mobile soil-I to plants, with enrichment factors in plant tissues increasing from root through to the leaf, demonstrated using I-125.

Dietary iodine supplies from foods. Food crop and fish I concentrations were matched to mean national dietary supplies of 92 edible food items in 2011⁵⁴. Thus, national mean dietary I supply from foods other than salt was just $7.8 \mu\text{g capita}^{-1} \text{ d}^{-1}$. Mean supply of I from the food groups 'Cereals', 'Animal products', 'Roots and tubers', 'Fruits and vegetables' and 'Pulses and beans' were 3.1, 2.6, 1.1, 0.6 and $0.3 \mu\text{g capita}^{-1} \text{ d}^{-1}$, respectively (Supplementary Table 5). 'Cereals', 'Animal products' and 'Roots and tubers' supplied 40, 33 and 14% of mean national dietary I supplies from foods other than salt, compared to 54, 4 and 18% of mean national dietary energy supplies, respectively⁵⁵.

Plant Tissue		Own data						Literature data			
								UK DoH, 2013 ⁹⁵	Eckoff, 1997 ⁵⁸	Stadlmayr, 2010 ⁹⁶	FSA, 2002 ⁹⁷
		Calcareous		Non-calcareous		Leptosols		UK	Tanzania	West Africa	UK
		n	Img kg ⁻¹	n	Img kg ⁻¹	n	Img kg ⁻¹	Img kg ⁻¹	Img kg ⁻¹	Img kg ⁻¹	Img kg ⁻¹
Onion	Bulb		–	1	0.01		–	0.02	–	0.02	0.03
Maize	Flour	1	0.01	2	0.01	16	0.01	–	–	–	–
Pearl millet	Flour	1	0.03		–		–	–	–	–	–
African gum	Fruit		–	1	0.02		–	–	–	–	–
Banana	Fruit	1	0.01	2	0.01	1	0.01	0.03	–	0.02	0.08
Blackberry	Fruit	1	0.06		–		–	–	–	–	–
Chilli	Fruit		–	1	0.02		–	–	–	–	–
Guava	Fruit		–	1	0.01		–	–	–	–	–
Lime	Fruit		–	1	0.01		–	–	–	–	–
Mango	Fruit	4	0.01	6	0.01	1	0.02	–	–	0.02	–
Masau	Fruit		–	2	0.02		–	–	–	–	–
Masuku	Fruit		–	2	0.01		–	–	–	–	–
Okra	Fruit	1	0.21	1	0.11		–	–	–	–	–
Papaya	Fruit	3	0.02		–	1	0.02	–	–	–	–
Pumpkin	Fruit		–	1	0.01		–	–	–	–	–
Tomato	Fruit	3	0.08	4	0.03		–	0.02	–	0.01	0.02
Finger millet	Grain		–	1	0.01	7	0.03	–	–	–	–
Maize	Grain	21	0.01	24	0.01	16	0.01	<0.007	<0.016–0.03	0.01	–
Pearl millet	Grain	37	0.01		–		–	–	–	–	–
Rice	Grain	6	0.01	1	0.01	1	0.01	–	–	0.08	0.014
Sorghum	Grain	40	0.01	5	0.02		–	–	–	–	–
Amaranth	Leaf	2	0.16	3	0.07		–	–	–	–	–
Bay	Leaf		–	1	0.17		–	–	–	–	–
Bean	Leaf	3	0.20		–		–	–	–	–	–
Black jack	Leaf		–	2	0.07	5	0.35	–	–	–	–
Cabbage	Leaf		–	2	0.08	2	0.26	0.02	–	–	0.02
Cassava	Leaf	7	0.30	9	0.19	4	0.23	–	–	–	–
Cauliflower	Leaf		–	1	0.05		–	–	–	–	–
Courgette	Leaf	1	0.22		–		–	–	–	–	–
Cowpea	Leaf	6	0.20	1	0.09		–	–	–	–	–
Hibiscus	Leaf	1	0.12		–		–	–	–	–	–
Jews mallow	Leaf	2	0.12	2	0.02		–	–	–	–	–
Kala Kola	Leaf	1	0.21		–		–	–	–	–	–
Luni	Leaf		–	1	0.09		–	–	–	–	–
Moringa	Leaf	12	0.12	4	0.05		–	–	–	–	–
Mustard	Leaf	1	0.09	1	0.10		–	–	–	–	–
Okra	Leaf	3	0.02	2	0.02	2	0.05	–	–	–	–
Pumpkin	Leaf	5	0.25	7	0.05		–	–	–	–	–
Rape	Leaf		–	1	0.05	5	0.15	–	–	–	–
Sweet potato	Leaf	4	0.46	3	0.08	4	0.64	–	–	–	–
Swiss chard	Leaf	1	0.16		–		–	–	–	–	–
Tove	Leaf	20	0.19		–		–	–	–	–	–
Cowpea	Pod		–	1	0.03		–	–	–	–	–
Moringa	Pod	1	0.11		–		–	–	–	–	–

Continued

Plant Tissue		Own data						Literature data			
		Calcareous		Non-calcareous		Leptosols		UK DoH, 2013 ⁹⁵	Eckoff, 1997 ⁵⁸	Stadlmayr, 2010 ⁹⁶	FSA, 2002 ⁹⁷
		n	I mg kg ⁻¹	n	I mg kg ⁻¹	n	I mg kg ⁻¹	UK	Tanzania	West Africa	UK
								I mg kg ⁻¹	I mg kg ⁻¹	I mg kg ⁻¹	I mg kg ⁻¹
Pigeon pea	Pod	2	0.01	1	0.01		–	–	–	–	–
Cassava	Root	2	0.01	8	0.01		–	–	<0.016–0.027	–	–
Bambara nut	Seed		–	1	0.04	8	0.01	–	–	–	–
Bean	Seed	2	0.01	1	0.01	3	0.07	0.02	<0.016	–	–
Common bean	Seed	2	0.01	3	0.01		–	–	–	0.03	–
Cowpea	Seed	13	0.01	4	0.01		–	–	–	–	–
Dorica bean	Seed	1	0.01		–	1	0.01	–	–	–	–
Groundnut	Seed	2	0.01	6	0.01	2	0.01	–	–	0.2	–
Moringa	Seed		–	2	0.02		–	–	–	–	–
Mucuna	Seed	1	0.02		–		–	–	–	–	–
Pea	Seed		–		–	2	0.04	–	<0.016	–	0.02
Pigeon pea	Seed	2	0.01	5	0.01		–	–	–	–	–
Pumpkin	Seed		–		–	1	0.13	–	–	–	–
Soya	Seed		–	2	0.01	7	0.03	–	–	–	–
Sunflower	Seed		–	1	0.01		–	–	–	–	–
Sugarcane	Stem		–	1	0.01		–	–	–	–	–
Sweet potato	Tuber	2	0.01	1	0.01		–	–	–	0.02	0.02

Table 1. Summary iodine concentrations for paired soil and plants, by plant type and soil classification, compared with available literature data (mg kg⁻¹, dry-weight, edible portion).

Other sources of iodine intake. Salt can be the major source of I intake where iodised salt is consumed. However, water can also provide a significant source of I intake. Iodine data for table/cooking salt samples are limited in the present study (n = 5) with a median I concentration of 53.1 mg kg⁻¹ (20.8, 107.1; Supplementary Table 6). In addition, a small number of drinking water samples were collected from hand-dug wells or boreholes, with a median I concentration of 12.6 µg L⁻¹ (1.9, 20.9; n = 19; Supplementary Table 7), ranging from 1.0 to 54.2 µg L⁻¹.

Urinary Iodine Concentrations. Urinary Iodine Concentrations (UIC) were measured in a sample of volunteers described in Hurst *et al.* (2013)⁴¹ in six villages in the Zombwe and Mikalango Extension Planning Areas (EPA). Creatinine-adjusted UIC (µg g⁻¹ creatinine) exhibited a median for all 118 volunteers of 203 µg L⁻¹ (127, 278 µg L⁻¹; n = 118), while median uncorrected UIC was 222 µg L⁻¹ (141, 344 µg L⁻¹; n = 118; Supplementary Table 8). Table 3 summarises the proportion of individuals that fall into each category of I status from severe deficiency through to severe excess^{12,56}.

Discussion

Soil iodine composition. The median soil-I concentration of 2.06 mg kg⁻¹ is below the worldwide mean for regions >50 km from the coastal region of 2.6 mg kg⁻¹ reported by Johnson *et al.* (2003a,b)^{31,32}. Typically, <25% of soil-I is in a soluble form²⁰ and in the present study, the median proportion of total soil I that was water-extractable was 1.3% (0.7, 2.0). Soil OM provides a major function in retaining soil-I with humus content influencing the adsorption rate of added iodide and iodate¹⁹; in the present study, there was a positive correlation between total soil I concentration and OM. In addition, iodide is transformed to organic forms more quickly than iodate⁵⁷; in the present study, there was a negative correlation between total soil I concentration and pH. Subsequently, soils were grouped as 'high pH, high OM', 'high pH, low OM', 'low-pH, high OM' or 'low-pH, low OM' where 'high' and 'low' were defined relative to median pH and OM values, respectively. Using this classification, the greatest concentration of total soil I was in the 'low pH, high OM' group with a median value of 5.52 mg kg⁻¹ (2.82, 8.12) while the lowest concentration was in the 'high pH, low OM' group with a median value of 0.95 mg kg⁻¹ (0.53, 1.47). Further work is required on I fixation rates as influenced by transformation to organic forms of I and the bacterial role in methylation of I in soil and transfer to the biosphere^{24,25}. Despite the proportion of water extractable soil-I being greater at soil pH > 8 (3 to 4.7%) than at soil pH < 5 (0.1 to 1%) in this

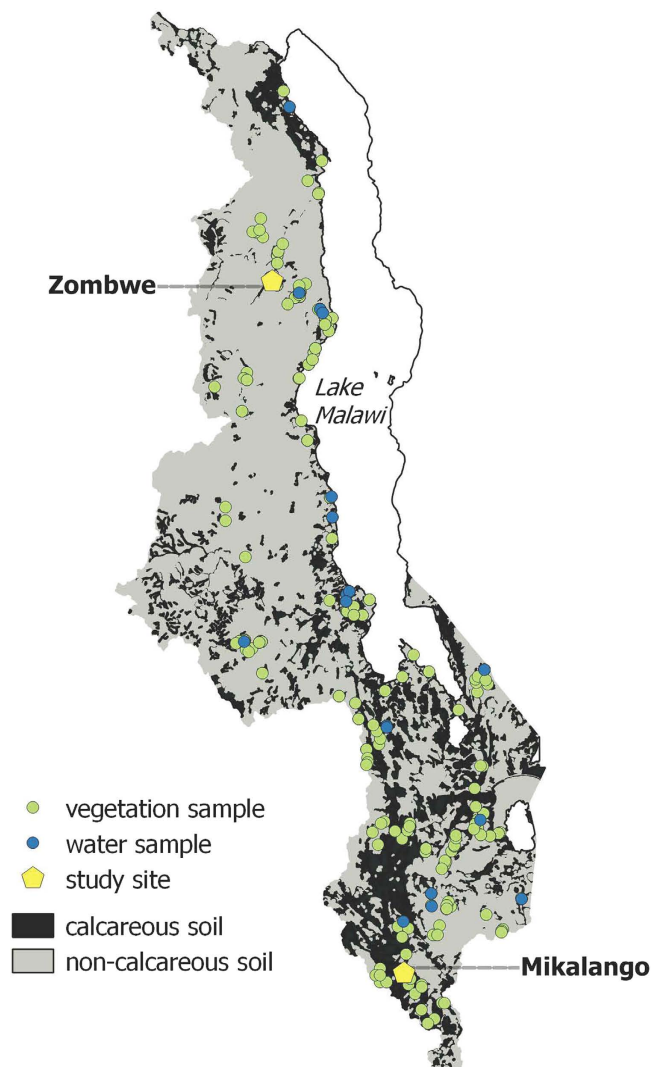


Figure 2. A map of Malawi showing crop and water sampling locations and the two study sites where urine samples were collected (QGIS Geographic Information System v.2.10.1. Open Source Geospatial Foundation. <http://qgis.osgeo.org>)

Plant group	Median iodine concentration (mg kg^{-1})	SD	Correlation R^2
Fruit	0.02	0.02	0.0110
Grain	0.01	0.03	0.0008
Leafy vegetables	0.17	0.24	0.0194
Pods	0.02	0.05	0.0031
Root	0.01	0.01	0.1704
Seeds	0.01	0.03	0.0045

Table 2. Correlation for paired soil and plant iodine concentrations (dry weight – DW).

study, calcareous soils have been reported to fix iodate rather than increase bioavailable I for uptake by plants⁵⁸, whereas iodide is a more mobile form of I, favoured by acidic and anaerobic conditions²¹.

Food crop and fish iodine concentrations. Iodine concentrations in this study were comparable to the limited I data available in the literature for maize grain, fruits and vegetables for Tanzania, West Africa and the UK (Table 1). The data confirm that the majority of fruit, grains and vegetables provide

Iodine status	UIC	Zombwe		Mikalango		Combined	
	$\mu\text{g L}^{-1}$	Corrected	Uncorr.	Corrected	Uncorr.	Corrected	Uncorr.
deficient	<100	19	29	5	2	12	15
sufficient	100–200	37	34	39	22	38	28
moderate excess	200–300	24	17	34	31	29	24
severe excess	>300	20	20	22	46	21	33

Table 3. Proportion (%) of volunteers from Zombwe (n = 59) and Mikalango (n = 59) villages within each sub-group for iodine status as defined by urinary iodine concentrations (UIC) either corrected or uncorrected for creatinine.

little input to dietary I intake, including from staple foods such as maize. Concentrations of I were greater in fish and leafy vegetables while one sample of coconut flesh had a concentration of 5 mg kg^{-1} (DW); however, coconuts are not widely consumed in Malawi.

No direct correlation was observed between paired soil and plant-I concentrations. Only a weak correlation between water-extractable (mobile) soil-I and plant-I was observed (R^2 0.018). The median water-extractable soil-I as a proportion of total soil-I was 1.3%, which was comparable to Pakistani soils (2%)²⁷ and significantly lower than 10 and 42% reported for Morocco and Argentina, respectively^{29,30}.

The limited fish data from the Shire River and Lake Malawi had a median I concentration of 0.51 mg kg^{-1} . Thus, a portion of 50 g DW of fish would supply $\sim 25 \mu\text{g}$ of I to the diet, compared to the adult RNI of $150 \mu\text{g d}^{-1}$. Iodine concentrations of fish in this study are comparable with the literature. Eckhoff and Maage (1997)⁵⁹ reported wet weight I concentrations 5 to 10 times higher in salt water fish (0.92 mg kg^{-1}), compared to fresh water fish in Tanzania, and Haldimann *et al.* (2005)⁶⁰ reported median I concentrations of 1.44 mg kg^{-1} and 0.21 mg kg^{-1} DW in marine and freshwater fish, respectively. Fish and other seafood is recognised as a good source of I and other micronutrients⁶¹. For example, Maage *et al.* (2008)⁶² demonstrated the use of traditional foods supplemented with marine fish powder to alleviate I deficiency in a cohort of Ghanaian schoolchildren within 14 days.

Iodine supply from salt. The 2010 Malawi Demographic and Health Survey¹⁶ reported that 62% of households were using salt iodised at the recommended concentration of $\geq 15 \text{ mg kg}^{-1}$. The median I concentration from the five salt samples collected from a range of grocery stores in the present study was 53.1 mg kg^{-1} . However, one sample of packaged salt and one sample of market-bought rock salt had an I concentration $> 100 \text{ mg kg}^{-1}$ with consumption of 5 g d^{-1} providing $> 500 \mu\text{g d}^{-1}$ to dietary supplies, risking excessive intake. This finding complements previous studies that question the monitoring of the salt iodisation campaign in Malawi. Kenji *et al.* (2003)⁶³ reported I concentrations in supermarket-bought iodised salt well above the recommended range with a mean of 101.6 mg kg^{-1} and in open market vendors a mean of 68.1 mg kg^{-1} and as low as 17.6 mg kg^{-1} . The Malawi Micronutrient Survey (2001)⁶⁴ found that only 36% of households were using salt at greater than the recommended concentration of I, whilst the Malawi Demographic and Health Survey⁶⁵ reported successful coverage of 62% of households. Weng *et al.* (2014)⁶⁶ found that 15% of total I was lost during the cooking of biofortified celery, compared to 69% of total I when celery was cooked with iodised salt. A comparison of food preparation processes would be of further interest to study the influence on a range of micronutrients, including I.

Iodine supply from water. Water-I concentration and water intake are important considerations for assessing overall I intake. For example, in Argentina, a large proportion of drinking water samples from groundwater sources was found to have I concentration $> 100 \mu\text{g L}^{-1}$, with potential for significant dietary intake³⁰. Consumption of 2 L d^{-1} is often assumed for adults⁶⁷, therefore at the median water-I concentration of $12.6 \mu\text{g L}^{-1}$ in this study, water may contribute up to $25 \mu\text{g d}^{-1}$ to daily I intake. The maximum I concentration in drinking water was $54.2 \mu\text{g L}^{-1}$, potentially contributing up to $108 \mu\text{g d}^{-1}$ of I. Reimann *et al.* (2003)⁶⁸ reported a wide range of I concentrations in water samples from spring, well and river sources taken along the Rift Valley in Ethiopia (0.31 – $961 \mu\text{g L}^{-1}$, $n = 138$), with a similar median concentration ($11 \mu\text{g L}^{-1}$) to the present study and there is likely to be a wide range of I concentrations in drinking water in Malawi considering the variable surface and groundwater supplies used. Barikmo *et al.* (2011)⁶⁹ reported a median water-I concentration of $108 \mu\text{g L}^{-1}$ (55 – $545 \mu\text{g L}^{-1}$) and a significant positive correlation with UIC measured in Algerian refugee camps. The authors considered the high water-I to be of the cause of goitres following excessive I intake from water.

Urinary Iodine Concentrations. Iodine deficiency as defined by UIC^{12,56} was present in 12% (creatinine corrected) of all volunteers from both villages (Table 3). Whilst this sounds promising, it is not an entirely clear picture with greater prevalence of deficiency in Zombwe than Mikalango EPAs. Furthermore, 29% of individuals exhibited moderate excess and 21% severe excess intake of I according to UIC. In addition, a greater proportion of volunteers were I deficient in Zombwe (19%) than Mikalango (5%) which may be due to differences in I consumed from foods, water or salt. Similarly high UIC

concentrations in excess of $300\mu\text{g L}^{-1}$ were reported in Sudan⁷⁰ and Tanzania⁷¹ where the consumption of dried fish preserved with salt and consumption of iodised salt occurred together. Out of 47 mainland African countries reported in the 2014 Iodine Global Scorecard^{72,73}, 14 were classed as having 'more than adequate' I and three as 'excessive' on the basis of UIC in SAC. Iodine status was defined as 'insufficient' in just 10 countries.

Dietary iodine supplies and deficiencies in Malawi. Data from the range of plant and fish samples in the present study suggest a minimal input of food sources to dietary intake (i.e. $<10\mu\text{g capita}^{-1}\text{d}^{-1}$). Previously, Joy *et al.* (2014)⁵⁵ estimated mean national dietary I supplies from foods other than salt to be $36\mu\text{g capita}^{-1}\text{d}^{-1}$ on the basis of FBSs and published composition data. The lower estimate in the present study is due to the use of locally-generated food crop and fish composition data. An individual consuming the mean national I supply from foods, 5g d^{-1} of salt with I concentration of 53.1mg kg^{-1} and 2L d^{-1} of water with I concentration of $12.6\mu\text{g L}^{-1}$ would have a total dietary I intake of $\sim 300\mu\text{g d}^{-1}$. However, $265\mu\text{g}$ of that total intake would be from salt and inadequate dietary I would be extremely likely without consumption of iodised salt.

Policy implications. Inadequate I supply from foods and variable I supply from water reaffirm the value of the national salt iodisation strategy to alleviating dietary I deficiency. Economic costing can provide impetus to the maintenance of national programmes and the development of cost-effective strategies. Salt iodisation is likely to be highly cost-effective at addressing widespread I deficiency with cost per disability-adjusted life year saved $\sim\text{US\$ }35$ ⁷⁴ while the economic benefit-cost ratio is likely to be 30:1⁷⁵. Salt iodisation has been effective in reducing I deficiency at a global scale with countries assigned as I-deficient falling from 110 to 32 between 1993 and 2012^{1,76}.

In Malawi, salt iodisation is likely to have improved the I status of the population since its inception in 1995⁷⁷. However, there are challenges remaining. Firstly, coverage of iodised salt is incomplete, with 38% of households not consuming adequately iodised salt in 2010⁶⁵. Secondly, promotion of iodised salt consumption presents a potential conflict with WHO measures to target maximum individual salt intake of 5g d^{-1} by 2025 to reduce risk of chronic diseases arising from high blood pressure⁷⁸. Mean salt consumption is currently likely to be $>5\text{g capita}^{-1}\text{d}^{-1}$ in many countries in Africa and Joy *et al.* (2014)⁵⁵ calculated that the risk of dietary I deficiency would increase from 19 to 35% of the population of Africa if there was universal consumption of $5\text{g capita}^{-1}\text{d}^{-1}$ of salt. Integration of both strategies to reduce overall salt intake and optimise the level of salt iodisation is essential. Thus, the recommended level of salt iodisation may need to increase by 59% to account for the proposed reduction in salt intake⁷². However, this amplifies the third challenge, being the risk of excessive I intakes, which in Malawi was supported in the present study with I concentration $>100\text{mg kg}^{-1}$ in two of five salt samples and UIC $>300\mu\text{g L}^{-1}$ in 21% of adult women from two villages on contrasting soils. Thus, greater monitoring of iodised salt manufacture, packaging, distribution and usage is required. In a similar scenario, Sebotsa *et al.* (2005)⁷⁹ reported that salt iodisation had eliminated IDD in Lesotho, but a high median UIC of women in lowlands led to a possible I-induced hypothyroidism in vulnerable people.

The present study demonstrates the importance of locally-relevant and accurate composition data for estimating dietary I supplies. Such information can improve the design or adaptation of I intervention strategies appropriate to the region and cultural habits, such as biofortification, salt iodisation or dietary diversification. In addition, simulation models can be improved to predict anticipated effects of food fortification or changes in dietary habits including consumption of salt^{50,80,81}. Combined monitoring of all sources of I intake is required to provide a better prediction of deficiency whilst avoiding excess I intake. Clearly, the risk-benefit is in favour of the fortification of salt with I, but careful monitoring of intake is required to avoid those with the greatest I intakes exceeding the Tolerable Upper Levels⁸.

Caveats. Creatinine adjustment of UIC has been questioned for use in developing countries because its use may be compromised by the varying intake of protein and water in the diet in these countries, the existence of malnutrition, and through differing rates of hydration^{82,83}. Correction of UIC can have a considerable influence on values reported, as shown in Table 3. Other methods such as specific gravity⁸⁴ or osmolality⁸⁵ are worthy of further study to ensure reliable dilution correction of UIC to allow for variations in dietary intake, particularly as such importance is placed on UIC measurements to define the success of national campaigns to alleviate IDD. Ninety percent of dietary I is excreted in the urine and is therefore useful to accurately measure recent I intake. Use of analysis boundaries is of most interest, for example, just below or above the $100\mu\text{g L}^{-1}$ ($\mu\text{g g}^{-1}$ creatinine) boundary to define sufficiency, therefore accurate I measurements and corrections for dietary intake or rates of hydration are essential to categorise UIC study groups with confidence. Another limitation of UIC for consideration in the present study is the recommendation by the WHO for the collection of ≥ 300 casual urine samples from any given population to identify IDD. In addition, prevalence estimates are based on a single urine sample per person, which do not take into account within-subject variation in UIC. Increasingly, investigators are recommending the collection of a second casual sample on at least a subset of the population so that the within-subject variation can be estimated and the distribution of observed UIC adjusted to usual UICs⁸⁶.

Iodine status can easily change between UIC analysis boundaries indicating sufficiency or deficiency of I intake depending on nutrient-nutrient interactions^{50,87} and the presence of goitrogens⁵⁶. In order to

measure these influences other key micronutrients, such as Se should be measured to correctly assess the risk of thyroid dysfunction affected by nutrient-nutrient interactions⁵⁰, for example, combined deficiencies of I + Se⁸⁸ or Fe + I, Se + I and vitamin A + I⁸⁷. In addition, the complex interaction from inhibiting compounds in foods, such as goitrogens for I, need further investigation.

An additional consideration for the water-I concentrations could include methods of food preparation. For example, partial fermentation by immersion in water is used for processing cassava to remove the goitrogen, linamarin, a cyanoglucoside as well as refined maize flour (65% extraction) known in Malawi as white ufa. After soaking, the cassava and maize flour are dried via exposure to the sun. Both the practices of soaking and drying may impact negatively on the I concentrations of these processed foods. The quantification of goitrogens, such as thiocyanates, flavonoids or pyridines in key foodstuffs, including cassava, is essential to understand the utilisation of I in the thyroid. Goitrogens in drinking water are an important consideration, for example, bacterial contamination can inhibit the degradation of organic pollutants, high concentrations of calcium (Ca) or magnesium (Mg) salts have been implicated, as well as polyaromatic hydrocarbons and other organic compounds often associated with effluent from coal fields⁸⁹.

The low supply of I from foods other than salt (i.e. $<10\mu\text{g capita}^{-1}\text{d}^{-1}$) was estimated from FBS food supply data matched with locally-generated composition data. However, there are inherent weaknesses in FBS data which have been discussed extensively elsewhere^{55,90}. Compared to FBS data, mean national fish consumption was ~7-fold greater in the 2010–2011 Third Integrated Household Survey of Malawi¹⁶. Thus, I supply from fish may be under-estimated in the present study.

Methods

Sample collection and analysis. Plant and soil samples were collected from farmers' fields and markets from 2012 to 2014, generally at harvest time (May to July). Plant samples were brushed and washed with distilled water to remove soil and dust particles before being oven-dried at $<40^\circ\text{C}$. Where possible, soil samples were collected close to where the plant samples were collected, although this could not be done for plant samples bought at markets. Soil samples were air-dried, crushed and sieved to 2 mm. Both plant and soil samples were further ground to $<40\mu\text{m}$ in an agate ball mill. Fish samples were obtained from markets, representative of typical consumption for the localities. The fish samples were typically fresh water fish from Lake Malawi or the Shire River, often dried prior to purchase and then deboned. Salt samples labelled as iodised salt were collected from a variety of small grocery stores across Malawi. Plant and fish samples were passed through a food blender prior to milling, as appropriate. The analysis of I in soil, plant and fish materials follows the method employed in Watts and Mitchell (2009)⁹¹ and Watts *et al.* (2010)³⁰ for 0.25 g of soil, for which soil-I was extracted using 5% tetramethylammonium hydroxide (TMAH) at 70°C in a drying oven. Plant and fish samples required a more robust extraction procedure, using microwave heating (MARS Xpress, CEM), which combined heating and pressure to improve the extraction of I within a closed vessel system. Salt samples were dissolved in 1% TMAH, with subsequent analysis of I for all samples carried out by inductively coupled plasma mass spectrometry (ICP-MS; Agilent 7500cx), with the collision cell in no-gas mode. An ASXpress sample introduction loop (CETAC) was used to minimise the volume of sample ($500\mu\text{L}$) presented to the ICP-MS and therefore improve on the washout time compared to previously reported iodine analyses by the author⁹¹ to a limit of detection (LOD) of $0.25\mu\text{g L}^{-1}$ (3SD blanks), or 0.01mg kg^{-1} in the solid. Measurements below the LOD were attributed a concentration of half the LOD. Reference material values for a range of soil and vegetation matrices were comparable with values reported in Watts and Mitchell (2009)⁹¹.

Soil pH was measured in water using 10 g soil and 25 mL water. Organic matter content was determined as loss on ignition (LOI) at 450°C for 1 g of soil. Multi-elemental composition data (other than iodine) for maize samples collected in 2011 have been previously reported⁹² and for all other crops collected between 2011 and 2014 in Joy *et al.* (2015)⁴⁸. Urine samples were collected as described by Hurst *et al.* (2013)⁴¹. Group sizes were sufficiently large enough (>30) to assess UIC status on a median UIC, rather than on a single individual. Group data of >30 people allows for considerable day-to-day variation in urinary I excretion, often effected by varying degrees of hydration, malnutrition or diverse dietary intake^{8,13,93}. Frozen urine samples were thawed at room temperature and shaken gently to homogenise before three $\times 1\text{ mL}$ aliquots were dispensed for creatinine adjustment, I analysis in a TMAH matrix by ICP-MS (Thermo X-Series 2, ThermoFisher) using a ^{185}Re internal standard and multi-element analysis in 2% nitric acid, with the latter reported in Hurst *et al.* (2013)⁴¹. Certified Reference Material, Seronorm™ provided an accuracy of 85% ($n = 8; 260 \pm 3\mu\text{g L}^{-1}$).

Assessing the influence of soil factors on the mineral composition of plants. Previous studies have demonstrated the potential influence of soil type on maize grain and diet composite Se, Fe and Zn concentrations⁵². Therefore, plant and soil sample locations were matched to FAO soil classifications available at a national scale⁹⁴ using the 'spatial join' function in ArcGIS (v. 9.3, ESRI, Redlands, CA, USA). The FAO soil classes were assigned to two groups: 'calcareous' (Calcaric and Eutric classes) and 'non-calcareous' (all other classes). Leptosols were not assigned because they cannot be classified on this basis. Using this classification, 69% of the total land area in Malawi is non-calcareous, 26% is calcareous and the remainder is unassigned. The validity of the calcareous/non-calcareous groupings was tested by comparing their soil Ca concentrations and pH, which confirmed that the term 'calcareous' indicated

the presence of calcium carbonate in the soil and $\text{pH} > 6.5^{48}$. Soil type and sampling locations are shown in Fig. 2.

Availability of food composition I data in Africa for comparison of this dataset was limited. Therefore, additional datasets were used to supplement the African surveys, comprising: food-iodine composition data from the UK Department of Health⁹⁵, a specific study in Tanzania⁵⁸, broad survey of West Africa⁹⁶ and a UK Food Standards Agency survey⁹⁷.

The influence of calcareous/non-calcareous soil types on maize grain and 'leafy vegetables' I concentrations was assessed using Analysis of Variance (ANOVA, GenStat v.16, VSN International, Hemel Hempstead, UK). A \log_{10} transformation was used to reduce skew in the data. The influence of soil type was assessed for maize grain and leafy vegetable as these categories had adequate sample numbers and represent different plant tissues.

References

- Andersson, M., Karumbunathan, V. & Zimmermann, M. B. Global iodine status in 2011 and trends over the past decade. *J. Nutr.* **142**, 744–750 (2012).
- Benoist, B., Andersson, M., Takkouche, B. & Egli, I. Prevalence of iodine deficiency worldwide. *Lancet* **362**, 1859–1860 (2003).
- Zimmermann, M. B., Jooste, P. L., & Pandav, P. S. Iodine deficiency disorders. *Lancet* **372**, 1251–1262 (2008).
- Caldwell, K. I., Makhmudov, A., Ely, E. Jones, R. L. & Wang, R. Y. Iodine status of the U.S. population, National Health and Nutrition Examination Survey, 2005–2006 and 2007–2008. *Thyroid* **21**, 419–427 (2011).
- Obican, S. G., Jahnke, G. D., Soldin, O. P. & Scialli, A. R. Teratology Public Affairs Committee Position Paper: Iodine Deficiency in Pregnancy, *Birth Defects Research (Part A)* **94**, 677–682 (2012).
- WHO (World Health Organization). *Iodine status worldwide*, World Health Organization Global Database on Iodine Deficiency, Geneva (2004).
- Allen, L., de Benoist, B., Dary, O. & Hurrell, R. Guidelines on food fortification with micronutrients. United Nations World Health Organization and Food and Agriculture Organization, ISBN 92 4 159401 2 (2006).
- Burgi, H. Iodine excess, *Best Practice & Res. Clin. Endo. & Met.* **24**, 107–115 (2010).
- Pearce, E. N., Andersson, M. & Zimmermann, M. B. Global iodine nutrition: where do we stand in 2013? *Thyroid* **23**, 523–528 (2013).
- SCF, Opinion of the Scientific Committee on Food on the Tolerable Upper Intake Level of Iodine (Expressed on 26 September 2002). European Commission, Health and Consumer Protection Directorate General (2002).
- Leung, A. M. *et al.* Potential risks of excess iodine ingestion and exposure: statement by the American Thyroid Association Public Health Committee, *Thyroid* **25**, 145–146 (2015).
- WHO (World Health Organization). Urinary iodine concentrations for determining iodine status in populations, WHO/NMH/NHD/EPG/13.1 (2013).
- WHO/UNICEF/ICCIDD (World Health Organization/United Nations Children's Fund/International Council for Control of Iodine Deficiency Disorders). *Assessment of the iodine deficiency disorders and monitoring their elimination: A guide for programme managers*, 3rd ed. Geneva: World Health Organization, WHO/NDH/01.1 (2007).
- Zimmermann, M. B. & Andersson, M. Update on iodine status worldwide, *Curr. Opin. Endocrinol. Diabetes Obes.* **19**, 382–387 (2012).
- Zimmerman, M. B. & Anderson, M. Assessment of iodine nutrition in populations: past, present, and future, *Nutr. Rev.* **70**, 553–570 (2012).
- NSO (National Statistics Office of the Republic of Malawi) (2012) Malawi Third Integrated Household Survey (IHS3). NSO, Zomba, Malawi and World Bank Living Standards and Measurements Surveys. Available online: <http://www.worldbank.org/en/research> [accessed September 2013].
- Chi, X. Z. *Trace element and body health*, Chemical Industry Press, Beijing (1993).
- Zheng, B. S., Wang, B. B., Zhu, G. W. & Yu, X. Y. Environmental geochemistry of iodine in atmosphere and plant-review and a hypothesis, *Earth Sci. Frontiers* **8**, 359–365 (2001).
- Shetaya, W. H., Young, S. D., Watts, M. J., Ander, E. L. & Bailey, E. H. Iodine dynamics in soils, *Geochim. Cosmo. Acta* **77**, 457–473 (2012).
- Fuge, R. Chapter 16. Soils and iodine deficiency. In: Selinus (Ed), *Essentials of Medical Geology: Impacts of the Natural Environment on Public Health*, Elsevier, London, UK. ISBN: 0-12-636341-2 (2005).
- Bowley, H. E. Iodine dynamics in the terrestrial environment, PhD thesis University of Nottingham (2013).
- Shimamoto, Y. S., Takahasi, Y. & Terada, Y. Formation of organic iodine supplied as iodide in a soil-water system in Chiba, Japan, *Env. Sci. Technol.* **45**, 2086–2092 (2011).
- Sheppard, M. I., Thibault, D. H., Smith, P. A. & Hawkins, J. L. Volatilisation: a soil degassing coefficient for iodine, *J. Environ. Radio.* **25**, 189–203 (1994).
- Amachi, S. *et al.* Microbial participation in iodine volatilisation from soils. *Environ. Sci. Technol.* **37**, 3885–3890 (2003).
- Amachi, S. Microbial contribution to global iodine cycling: volatilisation, accumulation, reduction, oxidation, and sorption of iodine. *Microbes Environ.* **23**, 269–276 (2008).
- Whitehead, D. C. The distribution and transformations of iodine in the environment, *Environ. Int.* **10**, 321–339 (1984).
- Zia, M., Watts, M. J., Gardner, A. & Chenery, S. R. Iodine status of soils, grain crops, and irrigation waters in Pakistan, *Environ. Earth Sci.* doi: 10.1007/s12665-014-3952-8 (2014).
- Johnson, C. C. The geochemistry of iodine and a preliminary investigation into its potential use as a pathfinder element in geochemical exploration. Dissertation, University College of Wales (1980).
- Johnson, C. C., Strutt, M. H., Hmeurras, M. & Mounir, M. Iodine in the environment of the High Atlas Mountains, Morocco, British Geological Survey Commissioned Report, CR/02/196N (2002).
- Watts, M. J. *et al.* A snapshot of environmental iodine and selenium in La Pampa and San Juan provinces of Argentina, *J. Geochem. Explor.* **107**, 87–93 (2010).
- Johnson, C. C. Database of the iodine content of soils populated with data from published literature, British Geological Survey Commissioned Report, CR/03/004N (2003a).
- Johnson, C. C. The geochemistry of iodine and its application to environmental strategies for reducing risks from iodine deficiency disorders, British Geological Survey Commissioned Report, CR/03/057N (2003b).
- Blasco, B. *et al.* Iodine biofortification and antioxidant capacity of lettuce: potential benefits for cultivation and human health, *Ann. Appl. Biol.* **152**, 289–299 (2008).
- Jiang, X. M. *et al.* Dynamics of environmental supplementation of iodine: four years' experience of iodination of irrigation water in Hotien, Xinjiang, China, *Arch. Environ. Health* **52**, 399–408 (1997).

35. Ren, Q., Fan, J., Zhang, Z., Zheng, X. & DeLong, G. R. An environmental approach to correcting iodine deficiency: supplementing iodine in soil by iodination of irrigation water in remote areas. *J. Trace. Elem. Med. Bio.* **22**, 1–8 (2008).
36. Cao, X. Y. *et al.* Iodination of irrigation water as a method of supplying iodine to a severely iodine-deficient population in Xinjiang, China, *Lancet* **344**, 107–110 (1994).
37. Tonacherra, M. *et al.* Iodine fortification of vegetables improves human iodine nutrition: *in vivo* evidence for a new model of iodine prophylaxis, *J. Clin. Endocrin. Metab.* **98**, 1–4 (2013).
38. Weng, H.-X. *et al.* Increment of iodine content in vegetable plants by applying iodised fertiliser and the residual characteristics of iodine in soil, *Biol. Trace Elem. Res.* **123**, 218–229 (2008).
39. White, P. J. & Broadley, M. R., Biofortification of crops with seven mineral elements often lacking in human diets – iron, zinc, copper, calcium, magnesium, selenium and iodine. *New Phytol.* **182**, 49–84 (2009).
40. Philips, D. I. W. Iodine, milk, and the elimination of endemic goitre in Britain: the story of an accidental public health triumph, *J. Epidem. Comm. Health* **51**, 391–393 (1997).
41. Hurst, R. *et al.* Soil-type influences human selenium status and underlies widespread selenium deficiency risks in Malawi, *Sci. Rep.* **3**, 1425 (2013).
42. Siyame, E. W. P. *et al.* High prevalence of zinc-but not iron-deficiency among women in rural Malawi: a cross sectional study, *Int. J. Vitam. Nutr. Res.* **83**, 176–187 (2013).
43. Dickinson, N. *et al.* Evaluating environmental and social influences on iron and zinc status of pregnant subsistence farmers in two geographically contrasting regions of Southern Malawi, *Sci. Tot. Environ.* **500-501C**, 199–210 (2014).
44. Ecker, O. & Qaim, M. Analysing nutritional impacts of policies: an empirical study for Malawi. *World Dev.* **39**, 412–428 (2011).
45. Wessels, K. R., Singh, G. M. & Brown, K. H. Estimating the Global Prevalance of inadequate Zinc intake from National Food Balance Sheets: Effects of Methodological Assumptions, *Plos One*, **7(11)** (2012).
46. Fiedler J. L. Towards overcoming the food consumption information gap: Strengthening household consumption and expenditures surveys for food and nutrition policymaking. *Global Food Secur.* **2**, 56–63 (2013).
47. Verduzco-Gallo, I., Ecker, O. & Pauw, K. *Changes in food and nutrition security in Malawi: Analysis of recent survey evidence, Working Paper 06.* International Food Policy Research Institute, Washington DC, USA (2014).
48. Joy, E. J. M. *et al.* Soil type influences crop mineral composition in Malawi, *Sci. Total Environ.* **505**, 587–595 (2015).
49. Kumssa, D. B. *et al.* Dietary calcium and zinc deficiency risks are decreasing but remain prevalent, *Sci. Rep.* **5**, 10974 (2015).
50. Rohner, F. *et al.* Biomarkers of nutrition for development – iodine review, *J. Nutr.* **144**, 1322S–1342S (2014).
51. Tagami, K., Uchida, S., Hirai, I., Tsukada, H. & Takeda, H. Determination of chlorine, bromine and iodine in plant samples by inductively coupled plasma-mass spectrometry after leaching with tetramethyl ammonium hydroxide under a mild temperature condition. *Anal. Chim. Acta* **570**, 88–92, (2006).
52. Chilimba, A. D. C. *et al.* Agronomic biofortification of maize with selenium (Se) in Malawi. *Field Crops Res.* **125**, 118–128 (2012).
53. Weng, H.-X. *et al.* Biogeochemical transfer and dynamics of iodine in a soil-plant system, *Environ. Geochem. Health* **31**, 401–411 (2009).
54. FAO (Food and Agriculture Organization) FBS Data. Available at <http://faostat.fao.org> (accessed February 2015) (2011).
55. Joy, E. J. M. *et al.* Dietary mineral supplies in Africa, *Physiol. Plant.* **151**, 208–229 (2014).
56. Laurberg, P. *et al.* Iodine intake as a determinant of thyroid disorders in populations, *Best Pract. Res. Clin. Endoc. Metab.* **24**, 13–27 (2010).
57. Yamaguchi, N., Nakano, M., Takamatsu, R. & Tanida, H. Inorganic iodine incorporation into soil organic matter: Evidence from iodine k-edge absorption near-edge structure, *J. Environ. Radioact.* **101**, 451–457 (2010).
58. Fuge, R. & Ander, E. L. Geochemical barriers and the distribution of iodine in the secondary environment: implications for radio-iodine. In: Nicholson, K. (ed) *Energy and the environment: geochemistry of fossil, nuclear and renewable resources*, MacGregor Science, Aberdeen, pp 163–170 (1998).
59. Eckhoff, K. M. & Maage, A. Iodine content in fish and other food products from East Africa analysed by ICP-MS, *J. Food Comp. Anal.* **10**, 270–282 (1997).
60. Haldimann, M., Alt, A. Blanc, A. & Blondeau, K. Iodine content of food groups, *J. Food Comp. Anal.* **18**, 461–471 (2005).
61. Bene, C. & Heck, S. Fish and Food Security in Africa, *AGA WorldFish Centre Quarterly* **28**, 8–13 (2005).
62. Maage, A., Toppe, J., Steiner-Asiedu, M., Asibey-Berko, E. & Lied, E. Inclusion of marine fish in traditional meals improved iodine status of children in an iodine deficient area, *Afric. J. Food Sci.* **2**, 045–053 (2008).
63. Kenji, G. M., Nyirenda, K. K. & Kabwe, G. C. Iodine levels in edible salt sold in Malawi, Kenya and Zambia, *African Journals Online* **3**, 1–9 (2003).
64. Malawi Micronutrient Survey, accessed online 18th March 2015, http://www.micronutrient.org/nutritiontoolkit/ModuleFolders/12_Data_entry_analysis_and_%20report_writing/Examples/Report_of_survey_in_Malawi.pdf (2001).
65. NSO (National Statistics Office of the Republic of Malawi) (2011) Malawi Demographic and Health Survey 2010. NSO, Zomba, Malawi. Available online: <http://dhsprogram.com/pubs/pdf/FR247/FR247.pdf> [accessed December 2013].
66. Weng, H.-X. *et al.* An innovative approach for iodine supplementation using iodine-rich phytogetic food, *Environ. Geochem. Health* **36**, 815–828 (2014).
67. O'Reilly, J., Watts, M. J., Shaw, R. A., Marcilla, A. L. & Ward, N. I. Arsenic contamination of natural waters in San Juan and La Pampa, Argentina, *Environ. Geochem. Health* **32**, 491–515 (2010).
68. Reimann, C. *et al.* Drinking water quality in the Ethiopian section of the East African Rift Valley I—data and health aspects. *Sci. Total Environ.* **311**, 65–80 (2003).
69. Barikmo, I., Henjum, S., Dahl, L., Oshaug, A. & Torheim, L. E. Environmental implication of iodine in water, milk and other foods used in Saharawi refugee camps in Tindouf, Algeria, *J. Food Comp. Anal.* **24**, 637–641 (2011).
70. Hussein, I. S., Min, Y., Ghebremeskel, K. & Gaffar, A. M. Iodine status and fish intake of Sudanese schoolchildren living in the Red Sea and White Nile regions, *Public Health Nutr.* **15**, 2265–2271 (2012).
71. Assey, V. D. *et al.* Tanzania national survey on iodine deficiency: impact after twelve years of salt iodation, *BMC Public Health* **9**, 319 (2009).
72. IDD Newsletter. Introducing salt reduction strategies without jeopardising salt iodisation: a WHO workshop in South-East Asia, February, 5–9 (2015).
73. Iodine Global Network (IGN; 2014) Global Iodine Nutrition Scorecard for 2014. Available online: <http://www.ign.org/> [accessed December 2014].
74. Caulfield, L. E., Richard, S. A., Rivera, J. A., Musgrove, P. & Black, R. E. Stunting, wasting, and micronutrient deficiency disorders. In: Jamison, D. T., Breman, J. G., Measham, A. R., Alleyne, G., Claeson, M., Evans, D. B., Jha, P., Mills, A. & Musgrove, P. Editors. *Disease control priorities in developing countries*. 2nd edition ed. Washington, DC: World Bank, 551–567 (2006).
75. Alderman, H. The economic cost of a poor start to life. *J. Develop. Orig. Health Dis.* **1**, 19–25 (2010).
76. Charlton, K. & Skeaff, S. Iodine fortification: why, when, what, how, and who? *Curr. Opin. Clin. Nutr. Metab. Care* **14**, 618–624 (2011).
77. Kalimira, A. A., Chilima, D. M., Mtumuni, B. M. & Mvula, N. Knowledge and practices related to use of iodised salt among rural Malawian households, *J. Agric. Environ. Sci. Technol.* **3**, 73–82 (2005).

78. WHO (World Health Organization). Reducing salt intake in populations: Report of a WHO technical meeting, 5-7 October 2007, Paris, France, WHO, Geneva (2007).
79. Sebotsa, M. L. D., Dannhauser, A., Jooste, P. L. & Joubert, G. Iodine status as determined by urinary iodine excretion in Lesotho two years after introducing legislation on universal salt iodisation, *Nutr.* **21**, 20–24 (2005).
80. Verkaik-Kloosterman, J., van't Veer, P. & Ocke, M. C. Reduction of salt: will iodine intake remain adequate in the Netherlands? *Br. J. Nutr.* **104**, 1712–1718 (2010).
81. Verkaik-Kloosterman, J., van't Veer, P. & Ocke, M. C. Simulation model accurately estimates total dietary iodine intake, *J. Nutr.*, **139**, 1419–1425 (2009).
82. Jooste, P. L. & Strydom, E. S. Methods for determination of iodine in urine and salt, *Best Pract. Res. Clin. Endo. Metab.* **24**, 77–88 (2010).
83. Knudsen, N. *et al.* Age- and sex-adjusted iodine/creatinine ratio. A new standard in comparison to 24 h values, *Eur. J. Clin. Nutr.* **54**, 361–363 (2000).
84. Nermell, B. *et al.* Urinary arsenic concentration adjustment factors and malnutrition, *Environ. Res.* **106**, 212–218 (2008).
85. Frederiksen, H. *et al.* Temporal variability in urinary phthalate metabolite excretion based on spot, morning, and 24-h urine samples: considerations for epidemiological studies, *Environ. Sci. Technol.* **47**, 958–967.
86. Charlton, K. E., Batterham, M. J., Buchanan, L. M. & Mackerras, D. Intraindividual variation in urinary iodine concentrations: effect of adjustment on population distribution using two and three repeated spot urine collections, *BMJ* **4**, 1–5 (2014).
87. Hess, S. Y. The impact of micronutrient deficiencies on iodine and thyroid metabolism: the evidence from human studies, *Best Practice & Res. Clin. Endo. & Met.* **24**, 117–132 (2010).
88. Zimmermann, M. B. & Kohrle, J. The impact of iron and selenium deficiencies on iodine and thyroid metabolism: biochemistry and relevance to public health, *Thyroid* **12**, 103–115 (2002).
89. Gaitan, E. Goitrogens in food and water, *Annu. Rev. Nutr.* **10**, 21–39 (1990).
90. de Haen, H., Klasen, S. & Qaim, M. What do we really know? Metrics for food insecurity and undernutrition. *Food Policy* **36**, 760–769 (2011).
91. Watts, M. J. & Mitchell, C. J. A pilot study on iodine in soils of Greater Kabul and Nangahar provinces of Afghanistan, *Environ. Geochem. Health* **31**, 503–509 (2009).
92. Chilimba, A. D. C. *et al.* Maize grain and soil surveys reveal suboptimal dietary selenium intake is widespread in Malawi, *Sci. Rep.* **1**, 72 (2011).
93. Rasmussen, L. B., Ovesen, L. & Christansen, J. G. Day-to-day and within day variation in urinary iodine excretion, *Europ. J. Clin. Nutr.* **53**, 401–407 (1999).
94. Green, R. & Nanthambwe S. Land Resources Appraisal of the Agricultural Development Divisions. Field Document No. 32. Lilongwe, Malawi, (1992).
95. DoH, *Nutrient analysis of fruit and vegetables*, Department of Health, UK, 1–29 (2013).
96. Stadlmayer, B. *et al.* *Composition of selected foods from West Africa*. (Food and Agriculture Organisation of the United Nations, Rome (2010).
97. Food Standards Agency. *McCance and Widdowson's The Composition of Foods, Sixth summary Edition*. (Royal Society of Chemistry, Cambridge, 2002).

Acknowledgements

Author contributions to this study were funded from multiple sources; a Partnership and Project Development Award (NE/1003347/1) from the UK Natural Environment Research Council (NERC), the UK Department for International Development (DFID) and the Economic and Social Research Council (ESRC) under the Ecosystems Services for Poverty Alleviation (ESPA) scheme; a Network Award from the Royal Society and DFID Africa capacity building initiative. Additional funding was provided from the University of Nottingham and British Geological Survey (BGS), primarily through the Centre for Environmental Geochemistry and BGS Global.

Author Contributions

The study was conceived by M.J.W., M.B., E.J.M.J., R.S.G. and E.L.A.; and largely managed and executed by E.J.M.J. and M.J.W., with data output overseen by M.J.W. and S.D.Y. A.D.C.C. provided logistical assistance in conducting the field sampling activities. E.L.A. assisted in the set-up of the project database architecture. R.S.G., A.A.K., B.C. and E.W.P.S. coordinated public health communication activities. All authors contributed to the design of the study and to writing and/or review of the paper.

Additional Information

Supplementary information accompanies this paper at <http://www.nature.com/srep>

Competing financial interests: The authors declare no competing financial interests.

How to cite this article: Watts, M. J. *et al.* Iodine source apportionment in the Malawian diet. *Sci. Rep.* **5**, 15251; doi: 10.1038/srep15251 (2015).



This work is licensed under a Creative Commons Attribution 4.0 International License. The images or other third party material in this article are included in the article's Creative Commons license, unless indicated otherwise in the credit line; if the material is not included under the Creative Commons license, users will need to obtain permission from the license holder to reproduce the material. To view a copy of this license, visit <http://creativecommons.org/licenses/by/4.0/>