

From ice to penguins: the role of mathematics in Antarctic research

José C. Xavier^{1,2}, S.L. Hill², M. Belchier², T. J. Bracegirdle², E. J. Murphy² & J. Lopes-Dias³

1- Institute of Marine Research (IMAR-CMA), Department of Life Sciences, University of Coimbra, 3001-401 Coimbra, Portugal

2- British Antarctic Survey (BAS), Natural Environment Research Council, High Cross, Madingley Road, Cambridge, CB3 0ET, UK

3- Lisbon School of Economics and Management (ISEG), Technical University of Lisbon, Rua do Quelhas, 6, 1200-781 Lisbon, Portugal

Abstract

Mathematics underpins all modern Antarctic science as illustrated by numerous activities carried out during the international year “Mathematics for Planet Earth”. Here, we provide examples of some ongoing applications of mathematics in a wide range of Antarctic science disciplines: 1. Feeding and foraging of marine predators; 2. Fisheries management and ecosystem modeling; and 3. Climate change research. Mathematics has allowed the development of diverse models of physical and ecological processes in the Antarctic. It has provided insights into the past dynamics of these systems and allows projections of potential future conditions, which are essential for understanding and managing the effects of fishing and climate change. Highly specific methods and models have been developed to address particular questions in each discipline, from the detailed analyses of remote-sensed predator tracking data to the assessment of the outputs from multiple global climate models. A key issue, that is common to all disciplines, is how to deal with the inherent uncertainty that arises from limited data availability and the assumptions or simplifications that are necessary in the analysis and modeling of interacting processes. With the continued rapid development of satellite-based and remote observation systems (e.g. ocean drifters and automatic weather stations), and of new methods for genetic analyses of biological systems, a step-change is occurring in the

1 magnitude of data available on all components of Antarctic systems. These changes
2 in data availability have already led to the development of new methods and
3 algorithms for their efficient collection, validation, storage and analysis. Further
4 progress will require the development of a wide range of new and innovative
5 mathematical approaches, continuing the trend of world science becoming
6 increasingly international and interdisciplinary.

11 **Introduction**

12 The Polar Regions are the cornerstones of the global ecosystem, barometers of
13 the health of the planet, and messengers of global processes (IPCC 2007; Krupnik et
14 al. 2011). Because it strongly influences the global climate and harbours unique and
15 diverse biological communities, the Antarctic plays a distinct and critical role in both
16 the physical Earth system and the ecosystem that it supports (Constable et al. in press;
17 Kennicutt et al. in press-a; Kennicutt et al. in press-b). Antarctica is renowned as
18 being the highest (i.e. on average the height of the continent is approx. 2 300 meters
19 height), driest, windiest and coldest continent, boasting the lowest recorded
20 temperature on Earth, -93.2°C, on the East Antarctic Plateau
21 ([http://www.nasa.gov/press/2013/december/nasa-usgs-landsat-8-satellite-pinpoints-
22 coldest-spots-on-earth/#.UqndqvwoYt](http://www.nasa.gov/press/2013/december/nasa-usgs-landsat-8-satellite-pinpoints-coldest-spots-on-earth/#.UqndqvwoYt), accessed 12/12/13), but it is surrounded by
23 the Southern Ocean (described here as waters south of the Antarctic Polar front;
24 Figure 2) which, in contrast, is very thermally stable (with some locations varying as
25 little as 0.2°C over a year) (Convey et al. 2012).

26 Some of the key science on globally important issues is conducted in the
27 Antarctic, often coordinated by the Scientific Committee on Antarctic Research and
28 various the bodies that administer the Antarctic Treaty System. These issues include
29 sea level rise, climate change, ocean acidification, biodiversity change, the ozone hole
30 and global ocean circulation (Sarmiento et al. 2004; Orr et al. 2005; Smetacek, Nicol
31 2005; Anisimov et al. 2007; Rignot et al. 2008; Turner et al. 2009; Krupnik et al.
32 2011; Convey et al. 2012; Turner et al. 2013a).

33 Furthermore, the Antarctic continues to spark the curiosity and imagination of
34 people around the world. It appeals to the sense of adventure and fear of the unknown.
35 These are perfect ingredients for education and outreach (Kaiser et al. 2010; Walton

1 2013; Walton et al. 2013; Xavier et al. 2013a), providing an excellent way to transmit
2 basic concepts about a wide range of Science, Technology, Engineering and
3 Mathematics (STEM) disciplines.

4 During the international year “Mathematics for Planet Earth”, numerous
5 activities related to mathematics were carried out throughout the world, including the
6 International Conference and Advanced School Planet Earth, Mathematics of Energy
7 and Climate Change, held in Lisbon (Portugal), in 21-28 March 2013. Here, we
8 follow discussions at that conference with a selective review of how mathematics is
9 applied in a wide range of Antarctic science disciplines.

11 **The scope of mathematical analyses in Antarctic science**

12 Mathematics plays an essential role in all modern Antarctic science. It is
13 central to of the data collection process, for example in generating efficient algorithms
14 to allow data storage and transfer, and for the calibration and validation of data from
15 *in-situ* and remote instrumentation (e.g. automatic weather stations and satellite-based
16 instruments). Mathematics is used in analyses and modeling of all aspects of
17 Antarctic science including weather and climate, ice sheet and sea ice dynamics,
18 ocean circulation, biogeochemical cycles and ecosystem processes. A key challenge
19 at present is in determining the impacts of climate change on, in particular, ecosystem
20 dynamics or glaciological change. To make progress there will need to be
21 improvements in climate modeling of sub-regions of Antarctica, in particular the
22 algorithms that are used to represent clouds, ocean/ice dynamics and ecosystem-
23 climate interactions. Improvements will require both updated mathematical models
24 and, possibly equally importantly, observations with which to calibrate models. A key
25 example is the Antarctic Peninsula, where the steep mountains are difficult to
26 represent in climate models with clear implications for assessing wider impacts of
27 climate change in the region. The range and complexity of applications is wide, from
28 simple analyses of small scale experiments to high resolution satellite-based studies
29 that provide circumpolar views, and from simple theoretical to fully coupled
30 atmosphere-ocean-ice models. Here, we illustrate the development and application of
31 mathematical analyses by considering three major areas of Antarctic science: 1.
32 Feeding and foraging of marine top predators; 2. Fisheries management and
33 ecosystem modeling; and 3. Climate change research. These sections provide
34 illustrations in three distinct types of scientific activity. Studies of the feeding and

1 foraging of marine top predators are strongly field based and require extensive sample
2 collection and analysis and careful design of sampling methods. With the advent of
3 satellite instrumentation, remote tracking now provides high resolution information
4 on position and movement, which has revolutionized analyses of predator foraging.
5 This has been associated with the development of a range of other remote devices,
6 and has generated a step-change in the size of datasets available. The second area,
7 fisheries management and ecosystem modeling, provides an illustration of the use of
8 mathematical methods in an applied arena to generate robust policy advice. The final
9 area, climate change, illustrates the challenge of developing projections of the impacts
10 of future change that can only be addressed through mathematical analysis and
11 modeling.

12

13

14

15 **The application of mathematics in the study of feeding and foraging ecology of** 16 **marine top predators**

17

18 In order to understand how the Southern Ocean food web operates, it is
19 essential to understand what animals eat and where they feed. To obtain reliable
20 estimates from the available data requires a wide range of mathematical (particularly
21 statistical and modeling) tools. The most common source of feeding data is the
22 stomach contents of sampled predators. To characterize the diet of top predators, such
23 as penguins (Figure 1) or albatrosses, prey in these stomach contents are generally
24 quantified by their frequency of occurrence, or the number or mass of each prey
25 species (Xavier et al. 2003a; Ratcliffe, Trathan 2011). To identify the prey (generally
26 fish, cephalopods such as squid and octopods, and crustaceans), scientists often have
27 to use hard structures that are not destroyed by digestion. These structures include the
28 sagittae otoliths (colloquially the “ear bones”) of fish. Otoliths are calcium carbonate
29 structures located directly behind the brain of teleost (bony) fish. For crustaceans,
30 scientists use their carapaces and for cephalopods their beaks. Cephalopod beaks are
31 chitinous structures, whose function is similar to that of teeth in carnivorous
32 mammals: to grasp, kill and dismember their prey.

33 Allometric regression equations can be derived to describe the relationship
34 between the mass and length of complete individuals of known species and the size of
35 their otoliths, carapaces or beaks. When applied to hard structures found in stomach

1 contents these equations provide a valuable mathematical tool for reconstructing what
2 a predator has been consuming (Hecht 1987; Reid 1996; Boltovskoy 1999;
3 Xavier,Cherel 2009). However, allometric equations are not available for numerous
4 species because they are still poorly known” (therefore scientists must rely on
5 equations from closely related species) and many of the available allometric equations
6 are based on a limited number and size range of specimens. Therefore, future work
7 must focus on obtaining more complete fish, crustaceans and cephalopods to improve
8 allometric equations, and on characterizing the uncertainty that is inherent in the
9 application of such methods (Xavier et al. 2003a; Xavier et al. 2005; Xavier et al.
10 2007; Xavier et al. 2011; Xavier et al. 2013b; Xavier et al. in press).

11 One of the key issues that marine ecologists need to address, when assessing
12 the diet and feeding ecology of a predator, is how many samples are needed. This
13 issue is particularly important as some predators can cover great distances, feed in
14 different regions (e.g. Wandering albatrosses *Diomedea exulans* can forage in
15 Antarctic, sub-Antarctic and subtropical waters during their breeding period, while
16 grey-headed albatrosses *Thalassarche chrysostoma* can go around the Antarctic
17 continent during their non breeding period) at different times of the year (Xavier et al.
18 2003b; Xavier et al. 2004; Croxall et al. 2005; Xavier et al. 2006). Therefore, it is
19 essential to characterize their diet correctly, and so to provide fundamental data for
20 food web studies, particularly modeling the present ecosystem status and predicting
21 future changes. Mathematically, this is an interesting challenge. A randomization
22 technique was used to estimate the number of stomach samples from albatrosses
23 needed to reach two saturation points: (1) the maximum cumulative number of
24 species; and (2) where each of the five most important species (i.e. >5% of the diet,
25 by mass) was present in at least one sample (Xavier et al. 2005). For each sampling
26 event, the program randomly selected one of the samples and checked the species
27 present. If one or more of the required species were absent, the program randomly
28 selected another sample that had not yet been selected, and the process was repeated
29 until one of the two saturation points was reached. The entire process was repeated
30 100 times. This study also compared different ways of collecting samples (i.e. using
31 stomach contents or voluntary regurgitations, named boluses) which permitted the
32 investigation of biases associated with each sampling method (Xavier et al. 2005).

33 Other techniques for analyzing diet use tissues from stomach samples to
34 identify prey species, or from predators (e.g. flesh, feathers, blood) to identify their

1 habitat or trophic level (e.g. DNA analyses, stable isotopes, fatty acids, trace
2 elements, chemical pollutants) with considerable success (Cherel,Hobson 2005;
3 Deagle et al. 2007; Karnovsky et al. 2012; Ramos,Gonzalez-Solis 2012; Tavares et al.
4 2013). Each of these techniques involves its own unique analytical challenges.

5 Mixed data sources (e.g. diet data obtained from stomach contents and data on
6 the stable isotope signatures from predators and prey) can be compared to calibrate
7 different methods. A Bayesian multisource stable isotope mixing model (SIAR:
8 Stable Isotope Analyses in the statistical package R) has been used to estimate the
9 probable contributions of each prey to the diet of each individual and hence the
10 predator's level of specialization on particular prey items (Parnell et al. 2010). This
11 method indicated that for wandering albatrosses *Diomedea exulans* fish was the main
12 component (56.4 %) of the diet, followed by cephalopods (43.6 %). These proportions
13 were similar to those from analysis of stomach contents, showing the usefulness of
14 these models for future research (Ceia et al. 2012).

15 Advances in micro-technology (and the decreasing of the size of tracking
16 devices) in the last two decades have revolutionized our understanding of the foraging
17 behavior of predators (Phillips et al. 2003; Phillips et al. 2008; Block et al. 2011;
18 Hazen et al. 2013). Seabirds can travel great distances (hundreds to thousands of
19 kilometres) and exhibit a number of unique physiological adaptations for such highly
20 pelagic lifestyles (Egevang et al. 2010). Albatrosses and petrels spend the great
21 majority of their lives at sea, and the use of tracking technology is the most effective
22 and, in many respects the only, means for gaining detailed insights into their foraging
23 behaviour (Parmelee et al. 1985; Jouventin,Weimerskirch 1990; Prince et al. 1992).

24 Satellite sensors, combined with 'ground truth' data from *in situ* surveys, are
25 contributing to a better understanding of ocean systems by providing large scale and
26 long-term data on biological bulk parameters such as chlorophyll, and on ecologically
27 relevant physical parameters, such as sea surface temperature or ice cover (Turner et
28 al. 2009). These data, combined with tracking technology can be used to answer
29 scientific questions about foraging behavior and how animals use their ocean habitat.
30 For example, satellite-tracking on animals in the late 1990s involved the deployment
31 of a Platform Terminal Transmitter (PTT) that sends a short radio signal typically
32 every 90 s to polar-orbiting NOAA satellites. The precision of the location estimate
33 can vary from meters to hundred of meters, depending on the number of satellites in
34 view at that place and time, the design and power of the transmitter, and the speed of

1 the animal (Wilson et al. 2002). More recently, Global Positioning System (GPS)
2 loggers have been widely used, mostly because of their higher precision (within 10 m)
3 (Weimerskirch et al. 2002) and ability to record positions at various time intervals,
4 from minutes to days (depending on the amount of time the device is on) (Nevitt et al.
5 2008). However, if scientists are more interested in knowing where animals are for a
6 longer period of time (e.g. large migration studies), geolocators or Global Location
7 Sensing (GLS) loggers are extremely useful (Phillips et al. 2004; Croxall et al. 2005).
8 GLS loggers record ambient light. This allows the estimation of sunset and sunrise
9 times from curve thresholds. These times in turn allow the estimation of latitude from
10 day length, following standard astronomical algorithms, and longitude from the time
11 of local mid-day with respect to GMT and Julian day. The disadvantages are that the
12 animal must be recaptured (as with most GPS loggers), only two locations can be
13 calculated per day, latitude estimation is impossible for variable periods around the
14 equinoxes, and the precision is relatively low, with an average error of 186 km
15 estimated for free-ranging albatrosses (Phillips et al. 2004).

16 These examples demonstrate that the reliable estimation of animal location,
17 and its associated error, is a fundamental part of modern animal ecology. There are
18 many existing techniques for handling location error, but these are often *ad hoc* or are
19 used in isolation from each other. There is a Bayesian framework for determining
20 location that uses all the data available, is flexible enough to be used with all tagging
21 techniques, and provides location estimates with built-in measures of uncertainty
22 (Sumner et al. 2009). Bayesian methods allow the contributions of multiple data
23 sources to be decomposed into manageable components. Sumner et al. (2009) showed
24 that many of the problems with uncertainty in archival tag and satellite tracking data
25 can be reduced and quantified using readily available tools.

26 With these mathematical tools applied to the feeding and foraging of top
27 predators, it has been possible to model potential areas where poorly known
28 organisms may be distributed. Indeed, the distribution of many cephalopod,
29 crustacean and fish species in the Southern Ocean, and adjacent waters, is poorly
30 known, particularly during times of the year when research surveys are rare (Xavier et
31 al. 1999; Brandt et al. 2007; Griffiths 2010; Rodhouse et al. in press). Analysing the
32 stomach samples of satellite-tracked higher predators has been advocated as a
33 potential method by which such gaps in knowledge can be filled. This approach
34 showed that wandering albatrosses, *Diomedea exulans*, foraged in up to three

1 different water-masses, the Antarctic zone (AZ), the sub-Antarctic zone (SAZ) and
2 the sub-Tropical zone (STZ) (Xavier et al. 2006). A probabilistic mathematical model
3 was applied to the tracking and diet data collected from wandering albatrosses to
4 construct a large scale map of where various prey were captured. Furthermore,
5 robustness and sensitivity analyses were used to test model assumptions about the
6 time spent foraging and relative catch efficiencies and to evaluate potential biases
7 associated with the model. The analysts were able to predict the distributions of a
8 multiple cephalopod, crustacean and fish species (Xavier et al. 2006). This method is
9 likely to be used in the future to predict the distributions of poorly known species,
10 such as large oceanic cephalopods, that are not effectively sampled using nets (Xavier
11 2003; Xavier et al. 2007; Xavier et al. in press).

12 In summary, mathematical methods are critically important to studies in
13 marine ecology, including those related to the feeding and foraging ecology of top
14 predators. The many examples range from producing mathematical mixed models to
15 quantify the consumption of prey to providing the algorithms that allow the tracking
16 of top predators in the Southern Ocean.

17 18 **The application of mathematics in fisheries management and ecosystem** 19 **modeling**

20 21 *Management of Southern Ocean fisheries*

22 Fishing is one of the main economic activities in the Southern Ocean,
23 alongside science and tourism (Grant et al. 2013b). The responsible management of
24 these fisheries is therefore an important applied ecology problem, which has led to
25 innovative approaches that make extensive use of mathematics and modeling. This
26 section discusses some of these approaches.

27 Fishing removes animals from an ecosystem. These animals would otherwise
28 continue feeding, growing, reproducing and being fed upon. Such removals can
29 reduce the ability of fished populations to replace themselves and they can have wider
30 impacts on other populations by changing the balance of predators and prey. The
31 Southern Ocean ecosystem has already experienced considerable perturbation as a
32 result of past harvesting which started in the late 1770s and led to localized
33 extinctions of Antarctic fur seals and the commercial extinction of many baleen whale
34 species which had previously consumed an estimated 175 m t yr^{-1} of Antarctic krill
35 *Euphausia superba* (Laws 1977).

1 Antarctic krill is a swarming shrimp-like animal that grows to a maximum of
2 about 6 cm, and is now the target of an expanding fishery (Nicol et al. 2012; Hill
3 2013b). There is also commercial harvesting of various fish species including the
4 high-value Antarctic toothfish, *Dissostichus mawsoni*, and Patagonian toothfish,
5 *Dissostichus eleginoides* (Grant et al. 2013b). Fish products are generally sold for
6 direct human consumption while krill is usually processed to produce fishmeal for
7 aquaculture, and oil which is sold as a health supplement (Nicol et al. 2012; Hill
8 2013b). These fisheries are managed by the Commission for the Conservation of
9 Antarctic Marine Living Resources (CCAMLR), which was established in 1982.
10 CCAMLR is responsible for ensuring that fisheries do not cause long-term damage to
11 fished populations or the wider ecosystem. Consequently fisheries management draws
12 on a much broader research effort which aims to understand the dynamics and
13 structure of Southern Ocean ecosystems.

14 One of the key challenges faced by the scientists who advise CCAMLR is
15 uncertainty. Assessments of the state of fished populations are affected by sometimes
16 considerable estimation error and there are no failsafe models to indicate how these
17 populations change in response to fishing, environmental variability and changes in
18 other populations. The uncertainty about how fishing will affect complex ecosystems
19 is even greater. Thus many of the major uses of mathematics in Southern Ocean
20 fisheries management and related research address uncertainty in some form. These
21 uses include producing useful estimates of the state of fished stocks from limited
22 observations (e.g. Agnew et al. 2009), identifying safe catch levels (Hillary et al.
23 2006), understanding ecosystem structure and dynamics (e.g. Hill et al 2012) and
24 evaluating potential risks to the wider ecosystem (e.g. Watters et al. 2013), each of
25 which is discussed in more detail below.

26 CCAMLR uses the precautionary approach to identify catch levels for
27 Southern Ocean fisheries. Hill (2013b), paraphrasing Garcia (1996), states that the
28 precautionary approach aims to “reduce the probability of occurrence of bad events
29 within acceptable limits when the potential for these events is plausible, but not
30 necessarily demonstrated, and the potential costs are significant.” Hill (2013b) also
31 suggests that the precautionary approach should reduce the risk of harm to the
32 ecosystem by setting low catch limits and protecting areas from fishing until there is
33 evidence that the risks associated with more intensive fishing are acceptable.

34

1 *Analyses and models for the management of fin fish stocks*

2 In order to provide robust management advice to CCAMLR on sustainable
3 catch limits that are consistent with the precautionary approach, fisheries scientists
4 undertake regular (annual or biennial) assessments of exploited fin fish stocks. In
5 common with fisheries management elsewhere, these stock assessments use a vast
6 array of fishery-dependent (e.g. catch rates) and fishery-independent (e.g. local
7 biomass estimates from scientific fishing) data to describe the past and current status
8 of a stock and to project the potential response of the stock to current and future
9 management options (e.g. catch limits). Mathematical techniques lie at the heart of all
10 stock assessments and are used in the construction of assessment models for each
11 fished stock. These models are generally based on population dynamics models that
12 can have varying degrees of complexity. The choice of stock assessment model will
13 depend both on the quality and availability of data on catch and fishing effort and
14 knowledge and availability of information on stock size, geographical stock
15 boundaries, and species-specific life history traits such as growth, natural mortality
16 and sexual maturity. Our understanding of these processes is usually summarized in
17 formal mathematical models (e.g. the von Bertalanffy growth equation) (Candy et al.
18 2007).

19 The two species of toothfish mentioned above are exploited by deepwater
20 demersal longline fisheries in various locations throughout the Southern Ocean (Grant
21 et al. 2013a). Several of these fisheries have taken place for over two decades and
22 consequently assessments can draw on a large amount of fishery-dependent and
23 ecological data. These ‘established’ fisheries, that include those carried out within the
24 Ross Sea and at a number of sub-Antarctic islands (i.e. South Georgia (Hillary et al.
25 2006) and the Heard and McDonald islands (Candy, Constable 2008)) are assessed
26 using age - structured, Bayesian ‘integrated’ stock assessment methods. The input
27 data for these assessments include trawl survey estimates of recruitment, commercial
28 catch at length or age data, standardised catch rate data, mark-recapture data from
29 multi-year tagging programmes, and estimates of natural mortality, growth, the
30 length-weight relationship and maturity data. Given the integrated nature of these
31 assessments in which many datasets are used concurrently to estimate parameters,
32 much attention is given to the statistical weighting of each dataset. Bayesian methods
33 are frequently used in the estimation procedure and uncertainty in the dynamics is

1 evaluated using Markov Chain Monte Carlo (MCMC) methods (Link,Barker 2010;
2 Magnusson et al. 2012).

3 A number of smaller fisheries for the two toothfish species exist in the high
4 seas areas of the Southern Ocean, in particular on the seamounts of the Indian Ocean
5 sector for which data on stock size and biological parameters is far more sparse
6 (Agnew et al. 2009). In these new, exploratory and research fishery areas, biomass
7 estimates of the local toothfish population are usually derived from mark recapture
8 data and calculated using the Lincoln –Peterson equation which estimates population
9 size as the product of the numbers of animals captured in each of two events divided
10 by the number that were captured twice (i.e. in both events) (Lincoln 1930). This
11 biomass estimate allows suitable catch limits to be obtained by the application of a
12 conservative exploitation rate. The scientific purpose of these fisheries, which are
13 considered ‘data poor’, is the collection of high quality data on abundance and the
14 biological characteristics of the stock with the aim of developing fully integrated
15 stock assessments in the near future. As more abundant and robust data become
16 available for these fisheries, more complex population dynamics models are
17 developed and tested in the transition towards a fully integrated assessment.

18 As with all biological systems there are varying degrees of uncertainty
19 associated with the data used within the stock assessment models. A suite of
20 mathematical procedures has been developed to address this uncertainty in order to
21 improve model fits within the stock assessments of Southern Ocean fin fish
22 populations. These procedures are part of an integrated approach which aims to
23 reduce the uncertainty in the projections used to evaluate management options. The
24 areas of greatest uncertainty have included the estimation of levels of illegal fishing
25 (Agnew,Kirkwood 2005), tagging (Ziegler 2013), cetacean depredation (Clark,Agnew
26 2010), unaccounted fishing mortality (Webber,Parker 2012), appropriate model
27 weighting for catch-at-age data, catch (Candy 2004) and natural mortality (Candy et
28 al. 2007), among others.

29

30 *Analyses and models for the management of Antarctic krill stocks*

31 Antarctic krill is a highly abundant species. Atkinson et al. (2009) used
32 various statistical models to estimate the gross growth potential, the amount of new
33 biomass that would be produced by growth each year if all animals survived. These
34 estimates ranged from 342 to 536 Mt yr⁻¹ depending on the model used. For

1 comparison, total global marine fisheries landings are approximately 80 Mt yr⁻¹ (FAO
2 2012). Of course, Antarctic krill do not achieve their full growth potential because
3 many of them do not survive the year. The vast population of Antarctic krill is
4 continually grazed by an array of predators including pelagic and demersal fish,
5 penguins and other seabirds, whales, seals and even benthic invertebrates. Many of
6 these predators rely on Antarctic krill as their main source of food (Laws 1977;
7 Xavier et al. 2003a; Waluda et al. 2012). For this reason the precautionary approach
8 for Antarctic krill has to consider the indirect effects of fishing on predators since it
9 effectively removes part of their food supply (Grant et al. 2013b). Management which
10 includes such considerations is sometimes known as Ecosystem Based Management
11 (McLeod,Leslie 2009).

12 In a logistic biomass growth model, the per-capita rate of increase is highest at
13 half of the asymptotic biomass. This leads to the hypothesis that fished populations
14 are most productive if reduced to half of their pre-fishing biomass (Punt,Smith 2001).
15 However, the requirement to explicitly manage potential impacts on Antarctic krill
16 predators led to a more precautionary objective: to ensure that, in the long-term,
17 fishing does not reduce the Antarctic krill population by more than 25% on average
18 (Constable et al. 2000; Hill et al. 2006). Scientists use a stochastic population
19 projection model to identify catch levels that meet this criterion. The model runs
20 multiple simulations with random deviates in various population parameters (e.g.
21 recruitment, natural mortality, age at maturity) and a range of different catch levels,
22 until it finds the correct level. During this process catch levels are also assessed
23 against another criterion: that the risk of the breeding population falling below 20% of
24 its initial biomass is no more than 10%. The highest catch level that meets both
25 criteria is selected to manage the fishery (Constable et al. 2000).

26 Smith et al. (2011) used nine ecosystem dynamics models (that is models of
27 the interacting dynamics of multiple species) to assess the potential impacts of fishing
28 on the rest of the ecosystem. This study considered fisheries for lower trophic level
29 species, such as capelin (*Mallotus villosus*), herring (*Clupea* spp.) and anchovies (e.g.
30 *Engraulis* spp.) in other oceans and did not directly consider the Antarctic krill
31 fishery. Nonetheless it found that allowing a fishery to deplete the biomass of the
32 fished population by no more than 25% provided reasonable catch levels while
33 achieving “much lower impacts on marine ecosystems” than the higher depletion rates
34 allowed by many fisheries management regimes (Smith et al. 2011). This suggests

1 that the general approach used for setting Antarctic krill catch limits might be
2 appropriately precautionary. However, a recent study shows that the catch limits
3 selected using this approach are sensitive to assumed levels of recruitment variability
4 and that recruitment variability in real krill stocks might be higher than that assumed
5 in model projections (Kinzey et al. 2013).

6 The ecosystem impacts of fishing depend not just on how much biomass of the
7 fished species it removes, but also where it removes biomass from. Although
8 Antarctic krill is widely distributed throughout the Southern Ocean, the vast majority
9 of the catch (83% of all reported catch to date) (Hill 2013b) is taken from the Scotia
10 Sea and southern Drake Passage (Figure 2) and is in fact concentrated in just 26% of
11 this area (Grant et al. 2013a). Specifically, fishing occurs in and close to the shallow
12 waters that surround the many islands in this area. Fishing does not generally occur in
13 the more hostile waters of the open ocean where Antarctic krill is still abundant but
14 much less likely to occur in the dense aggregations that the fishery targets (Hill et al.
15 2009). Scientists have used ecosystem dynamics models to assess the risk that such
16 spatially restricted fishing poses to Antarctic krill predators (Plagányi, Butterworth
17 2012; Watters et al. 2013). These models are spatially resolved to distinguish the
18 various shallow water and open ocean areas and they represent the interactions
19 between Antarctic krill, the fishery, and several groups of competing predators. The
20 exact nature of these interactions is uncertain and there is very little information about
21 past dynamics from which to infer the interactions. Consequently, the modelers did
22 not attempt to devise a single best model to project the consequences of future fishing.
23 Instead they attempted to evaluate the uncertainty in such projections and they
24 translated this uncertainty into estimates of the risks associated with candidate
25 management options (Figure 3).

26 The approach to this uncertainty about the true nature of the modeled
27 interactions was to use multiple plausible “scenarios” or plausible representations of
28 the system (Hill et al. 2007b). The word “scenario” here means a model and its data
29 (*sensu* Rademeyer et al. (2007)). The scenarios were based on two different model
30 structures, described in Plagányi and Butterworth (2012) and Watters et al. (2013) and
31 several alternative parameterizations of each model structure. These alternative
32 parameterizations were chosen specifically to bracket key uncertainties. For example,
33 the speed at which Antarctic krill are transported on ocean currents is not known, but
34 the actual speed is likely to lie between a minimum of zero and a maximum of the

1 speed of passive particles drifting with the currents, which can be deduced from ocean
2 circulation models (Hill et al. 2007a). Watters et al. (2013) developed four
3 parameterizations, each of which combined one of these extreme values for plausible
4 transport speeds with an extreme plausible value for a second key uncertainty
5 affecting the functional relationship between prey availability and the proportion of
6 the predator population that is able to breed.

7 Another important innovation recognized the impossibility of predicting with
8 accuracy the future state of the system when it is influenced by multiple interacting
9 drivers including climate variability and change (Kennicutt et al. in press-b), and
10 recovery from historic over-harvesting of whales (Croxall 1992). The modelers
11 therefore assessed the marginal effects of Antarctic krill fishing in their projections by
12 comparing them to otherwise identical projections without fishing.

13 The modelers performed 1001 stochastic projections with each scenario for
14 each evaluated management option (consisting of a catch limit and its spatial
15 distribution amongst modeled spatial units). One of the risks evaluated was the
16 probability of each modeled predator population falling below 75% of its size in
17 comparable projections without fishing. The models generated several thousand
18 projections per management option with which to calculate this probability. The
19 analysts presented results in the format shown in Figure 3, which shows the coherent
20 accumulation of risk with increasing catch limit, and identifies the least risky spatial
21 distribution (where the catch limit in each spatial unit is proportional to the total
22 predator demand for Antarctic krill in the same unit, labeled “B” in the figure). Hill
23 (2013a) demonstrated that this distribution remains the least risky even if a different
24 reference level (other than 75%) or scheme for aggregating modeled predator
25 populations is used.

26 Because managers need to consider the implications of management options
27 for the fished stock, the fishery and predators in multiple areas, the models assessed
28 each of these risks. One important consideration is that various model outputs (e.g.
29 the biomass of the fished stock versus the biomass of one of its predators) have
30 different levels of sensitivity to perturbations in model parameters, suggesting that
31 uncertainties in these parameters could bias comparisons of different risks
32 (Hill, Matthews 2013).

33 Scientists advising CCAMLR are attempting to develop a feedback
34 management approach for the Antarctic krill fishery that will modify spatially

1 resolved catch limits in response to information about the local and larger-scale state
2 of the ecosystem. Such an approach is difficult to design and implement when there
3 are multiple objectives for multiple connected areas, and when the system's dynamics
4 are complex and uncertain. Hill and Cannon (2013) used a branch of control theory
5 called model predictive control (MPC) to show that such an approach is feasible in
6 principle and more likely than the current fixed catch limit to simultaneously achieve
7 objectives for the state of the Antarctic krill stock, the state of multiple predator
8 populations and the state of fishery catches (Figure 4). Their study applied MPC to a
9 relatively simple ecosystem dynamics model consisting of two connected areas, each
10 containing a single prey population and a single predator population. Their study also
11 clarified the information requirements of such an approach, which include regular
12 estimates of each of the relevant state variables or, at least, reliable ways of inferring
13 these from the other state estimates and, critically, a clear set of quantitative
14 objectives for each relevant state. Defining such objectives is a major challenge facing
15 CCAMLR and other organizations around the world which seek to implement
16 Ecosystem Based Management (Link et al. 2012; Hill 2013a).

17

18 *Ecosystem modelling*

19 Models exploring the interactions between different populations in the
20 ecosystem are useful for devising and assessing Ecosystem Based Management
21 approaches. Some pioneering models of this type were developed for the Southern
22 Ocean ecosystem in the 1980s (Beddington, May 1980, 1982) and the modeling effort
23 that continued to develop since then was the subject of a detailed review by Hill et al
24 (2006). More recent developments include the ecosystem dynamics models described
25 above and a suite of Ecopath-type food web models (Cornejo-Donoso, Antezana 2008;
26 Pinkerton et al. 2010; Hill et al. 2012; Ballerini et al. 2014). Ecopath-type models
27 compile available data on the diet, biomass, and production and consumption rates of
28 the numerous organisms in a particular food web (Polovina 1984). Modelers generally
29 aggregate these organisms in so-called functional groups to reduce the number of
30 model parameters. The modelers then adjust the parameters to satisfy the “mass
31 balance” constraint that the rate of biomass production by any prey group cannot
32 exceed the rate of consumption of that prey biomass by its predators.

33 One use of Ecopath-type food web models is to identify which functional
34 groups are likely to be strongly affected by changes in the abundance of fished

1 species (Ulanowicz,Puccia 1990). A related use is to explore the potential responses
2 to a plausible change in one part of the food web. For example, Ballerini et al (2014)
3 converted their model of the winter food web in Marguerite Bay into a bottom-up
4 model, in which consumer biomass increases or decreases with the availability of
5 prey. They increased the modeled biomass of small phytoplankton relative to large
6 phytoplankton while maintaining a constant total phytoplankton biomass. This change
7 is a consistent with recently observed effects (Montes-Hugo et al. 2009). The model
8 predicted reduced production of krill and its predators as a result of this change. Hill
9 et al (2012) reduced krill biomass by 80% in their model of the South Georgia shelf
10 food web and readjusted the parameters to achieve mass balance. They found that,
11 without compensating effects, this produced a similar decline in the biomass of
12 Antarctic krill predators (fish, seals, penguins and other seabirds). However, a
13 combination of compensating effects (an increase in grazing zooplankton called
14 copepods and a shift in predator diets to take advantage of this increased copepod
15 biomass) could minimize the impacts on Antarctic krill predators. This illustrates the
16 wide range of outcomes that are possible within the current uncertainties on
17 ecological knowledge. Future model development and data collection should aim to
18 better characterize these uncertainties so that it is possible to assess which outcomes
19 are most likely.

20 The existing suite of food web models for the Southern Ocean provide a
21 valuable resource for comparing the structure and operation of the different regional
22 food-webs (Murphy et al. 2012; Murphy et al. 2013). However, each of the existing
23 regional models was developed by a different modeling team, using patchy and
24 uncertain data, and each model was designed and analyzed to address a unique set of
25 research questions. The differences between the models therefore include real
26 underlying ecological differences, differences due to sampling error in the available
27 data, and differences in the assumptions and subjective decisions made by the various
28 modeling groups. The challenge of distinguishing real ecological differences from
29 these sources of uncertainty is likely to be a major theme in future food web
30 modeling.

31 In summary, mathematics and modeling are critical to understanding
32 ecosystem structure and dynamics, assessing potential responses to change and
33 developing appropriate fisheries management approaches. CCAMLR's commitment
34 to Ecosystem Based Management and the relative paucity of ecological data for the

1 Southern Ocean produce some interesting challenges that have led to innovative
2 ecological modeling and analysis. It is practically impossible to identify definitive
3 models of ecosystem structure or dynamics and consequently much of this innovation
4 and many of the ongoing challenges concern the appropriate treatment of uncertainty.
5

6 **The application of mathematics in Antarctic climate change research**

7 The analysis and projection of climate change using mathematical modeling
8 currently receives much attention from scientists, politicians, the media and the
9 general public. Due to the increased rates of environmental change in the Antarctic,
10 considerable research effort has been devoted to modeling the Antarctic atmosphere
11 and the Southern Ocean, and to quantifying physical and biological aspects of change.
12 Most global climate models suggest that regional temperature increases will be
13 greatest and most rapid at higher latitudes (IPCC 2007; Turner et al. 2013a). Rapid
14 increases are already evident over the Antarctic Peninsula where, in the last half
15 century, air temperatures have risen by 2 to 3°C. To the west of the Antarctic
16 Peninsula sea ice has also declined and ocean temperatures have increased by 1°C
17 over 5 decades (Meredith, King 2005; Turner et al. 2013b). Although climate models
18 have successfully helped to build a broad picture of the causes of recent regional
19 change, there are still many gaps in knowledge which affect the ability of climate
20 models to reliably represent the Antarctic climate and the behavior of its ice caps and
21 sea ice. A recent study by Turner and colleagues (2013c) examined the annual cycle
22 and trends in Antarctic sea ice extent (SIE) for 18 climate models. Many of the
23 models have an annual SIE cycle that differs markedly from that observed over the
24 last 30 years. In contrast to the satellite data, which exhibit a slight increase in SIE,
25 the mean SIE of the models over 1979–2005 shows a decrease in each month (Turner
26 et al. 2013c). The models have very large differences in SIE over 1860–2005. The
27 negative SIE trends in most of the model runs over 1979–2005 are a continuation of
28 an earlier decline. There are two major gaps in knowledge that hamper the
29 understanding of the observed increase. Possibly the most important is the limited
30 observational record, in which reliable Antarctic-wide estimates of SIE are only
31 available after approximately 1979. It is therefore very difficult to estimate the size of
32 natural fluctuations in ice extent, which may have contributed to the recent changes.
33 Related to this, the other major gap is in understanding the processes for change that
34 need to be mathematically represented in climate models. At present it seems that the

1 processes responsible for the observed SIE increase over the last 30 years are not
2 being simulated correctly (Turner et al. 2013c).

3 Another important prediction of climate change models is changing patterns of
4 precipitation, altering the water input to terrestrial ecosystems. Spatially detailed
5 predictions are not yet available for Antarctica, although water is possibly the single
6 most important factor limiting the distribution of Antarctic terrestrial biota (Convey et
7 al. 2012). In some Antarctic terrestrial systems local environmental changes result in
8 greater energy input and warming, which may be accompanied by a lengthening of
9 the season in which liquid water is available. There is evidence that such changes
10 might increase production, biomass, population size, community complexity and the
11 rate of colonization by previously absent organisms (Bokhorst et al. 2011; Convey et
12 al. 2012). However, at fine scales a decrease or total loss of water input could lead to
13 local extinctions and drastic changes in local ecosystem structure (Convey 2013).

14 Increases in primary biological productivity are already being seen at the
15 margins of the Antarctic continent. These occur in areas of sea-ice loss where recent
16 ice shelf retreat has occurred (Peck et al. 2010). However, Antarctic marine species
17 are generally amongst the least capable of adapting to environmental change. There
18 are three main reasons (Peck 2005): 1- The geographical range over which they can
19 live or disperse is restricted; 2- they have evolved to live in a very specific
20 environment and tolerate only a narrow range of environmental conditions; and 3-
21 they have long life histories and consequently slow rates of adaptation. Statistical
22 analysis of experimental research provides evidence that the shallow mega- and
23 macrobenthos are also very sensitive to temperature change (stenothermal). Being
24 warmed by about 5°C over periods greater than one month kills most species tested to
25 date, but even smaller temperature rises (2 or 3°C above normal) drastically hinder
26 their ability to perform critical functions, such as avoiding predators (Barnes, Peck
27 2008). In pelagic waters, changes to key pelagic species have also been notable.
28 Regression analysis indicates a statistically significant relationship between Antarctic
29 krill abundance and winter SIE in the western Scotia Sea, and there were apparent
30 declines in both between the 1970s and 1980s (Atkinson et al. 2004; Turner et al.
31 2013b). Further SEI declines would likely lead to more changes in the distribution
32 and abundance of Antarctic krill.

33 Some studies have combined climate projections from global climate models
34 with statistical models linking ecological processes to environmental variables (e.g.

1 (Hill et al. 2013; Kawaguchi et al. 2013). For example, Hill et al. (2013) used sea
2 surface temperature projections from sixteen climate models with a statistical model
3 linking Antarctic krill growth (Atkinson et al. 2006) to sea surface temperature. They
4 found that plausible future warming is likely to lead to substantial reductions in the
5 ability of Antarctic krill to produce new biomass throughout the northern Scotia Sea
6 (Figure 5). This is where large populations of Antarctic fur seals, *Arctocephalus*
7 *gazella*, penguins and flying seabirds feed on Antarctic krill during the summer
8 breeding season. A reduction in Antarctic krill biomass could result in greater
9 predation on alternative prey and therefore negative impacts on some fish species
10 (Anisimov et al. 2007). As mentioned in the previous section, food web models have
11 been used to assess how such changes could propagate through the food web (Hill et
12 al. 2012; Ballerini et al. 2014). A key issue taken into account by Hill et al. (2013) is
13 that different climate models give different projections, contributing to uncertainty in
14 estimates of future change. Assessing and quantifying this uncertainty is an important
15 mathematical challenge in itself and an active area of research is in developing
16 statistical approaches to combining information from different climate models (Stock
17 et al. 2011; Bracegirdle, Stephenson 2012).

18 The effects of climate change in populations of top predators, such as
19 penguins, have also been considered (Barbraud, Heimerskirch 2001). Even apparently
20 straightforward tasks, like obtaining an estimate of the total number of penguins, are
21 not easy and require plenty of mathematical tools. As an example, a recent study
22 aimed to estimate the population of emperor penguins, *Aptenodytes fosteri*, using a
23 single synoptic survey in 2009 (Fretwell et al. 2012). The analysts examined the
24 whole continental coastline of Antarctica using a combination of medium resolution
25 and very high resolution satellite imagery to identify emperor penguin colonies and
26 the area occupied by penguins in each. They obtained actual counts of penguins from
27 eleven ground truthing sites and used robust regression to model the relationship
28 between the number of adult penguins and the area they occupy. They then used the
29 model to estimate of the number of adult penguins at every colony. Finally they
30 scaled this number up to estimate the total population of adults, including those that
31 were absent at the time of the survey, using information about rates of participation in
32 breeding and breeding success (Figure 6). The final estimate of 238,000 adults
33 present, out of a total population of 595,000 compares with the previously published
34 estimate of 135,000–175,000 breeding pairs (Martinez 1992). The revised,

1 comprehensive estimate of the total breeding population can be used in population
2 models and will provide a baseline for long-term research (Fretwell et al. 2012) which
3 is necessary because global and regional emperor penguin populations are likely to be
4 strongly affected by climate change (Barbraud,Heimerskirch 2001; Jenouvrier et al.
5 2012; Turner et al. 2013a).

6 In summary, climate research has always depended upon mathematics to build
7 models and implement analyses. These models and analyses have increased our
8 understanding of the past, and are now being used to project future climate conditions.
9 This is particularly important in the Antarctic where recent changes in some areas are
10 amongst the most extreme on earth. Ecological models are now being linked to
11 climate projections from global climate models, providing a new era of research and
12 bringing disciplines together. Future Antarctic climate research will include foci on
13 characterizing and reducing the uncertainty in model outputs (e.g. by collecting
14 further data and by improving the precision on the variables collected), on improving
15 understanding and representation of climate processes (to improve model
16 performance and the reliability of projections) and on working together with other
17 science disciplines to provide robust evidence on the range of climate impacts, from
18 sea level changes to biodiversity effects, that will inform policy decisions.

19

20 **Final considerations**

21

22 Mathematical analyses are crucial in all areas of Antarctic science and central
23 to addressing issues of global importance. In each scientific area highly specific
24 methods and models have been developed to address particular questions, from the
25 detailed analyses of remotely sensed predator tracking data to the assessment of the
26 outputs from multiple climate models to determine the potential impacts of future
27 global climate change.

28 A key issue, that is common to all scientific disciplines, is how to deal with
29 the inherent uncertainty associated with the analysis of process interactions in
30 Antarctic systems. Major uncertainties are often the result of limited data availability,
31 due to the difficulties of operating in remote Antarctic systems. However, over the
32 last decade a series of long-term sampling programmes and large-scale international
33 integrated projects (such as Census of Antarctic Marine Life (<http://www.caml.aq/>),
34 ANDRILL (<http://www.andrill.org>), GLOBEC (<http://www.globec.org/>)), and a rapid

1 increase in the volume of remotely sensed information available, have changed the
2 scale of the data available for analysing these systems. This increase in data
3 availability has led to the development of new methods and algorithms for their
4 efficient collection, validation, storage and analyses. With the continued rapid
5 development of satellite-based and remote observation systems (e.g. ocean drifters
6 and automatic weather stations), and of new methods for genetic analyses of
7 biological systems, a step-change is occurring in the magnitude of data available on
8 all components of Antarctic subsystems. Dealing with these data will require a similar
9 step-change in the use of mathematics in all aspects of Antarctic science.

10 Many of the issues of global importance in Antarctic science are at the
11 interfaces between traditional disciplines (e.g. biology and physics or oceans and the
12 cryosphere). In many of these areas new methodological and analytical approaches
13 and models are required. For example, addressing questions about how climate
14 change and direct human impacts (such as fishing) will affect ecosystems requires
15 integrated studies that link knowledge of biogeochemical cycles, species and food
16 webs (Murphy et al. 2012; Murphy et al. 2013). This requires integrated whole
17 ecosystem (also termed “end-to-end”) analyses at local (10s to 100km), regional
18 (100s to 100km) and circumpolar scales (10000s km) (Murphy et al. 2012;
19 Murphy,Hofmann 2013). Such whole system integration has become a central focus
20 of international activities in many areas of Antarctic science, and particularly in
21 Southern Ocean studies aimed at linking climate and ecosystem processes
22 (Murphy,Hofmann 2013). There are major theoretical and analytical challenges in
23 developing such integrated analyses and models. These include questions about how
24 different physical, chemical and biological processes link across a range of scales
25 (Murphy et al. 1988), how different model structures can be coupled together to
26 ensure appropriate feedbacks and system behaviour (Murphy et al. 2012) and how to
27 control and characterize the uncertainty that often multiplies as models integrate more
28 processes (Hill et al. 2007b). This will require the development of a wide range of
29 new and innovative mathematical approaches.

30 31 32 33 **Acknowledgements**

34 We thank Alberto Pinto and his team for organizing such an excellent
35 conference in bringing scientists from a wide range of research disciplines during the

1 year on “Mathematics for Planet Earth”. We also thank Janet Silk and Peter Fretwell
2 for preparing Figures 2 and 6 respectively. This work has the support of the Ministry
3 of Science and Higher Education in Portugal (Fundação para a Ciência e a
4 Tecnologia) and the research programs CEPH, SCAR AnT-ERA, PROPOLAR and
5 ICED. It is a contribution to the British Antarctic Survey programmes Ecosystems
6 and Climate which are funded by the Natural Environment Research Council.

7
8
9

10 References

11

- 12 Agnew, D.J., Edwards, C., Hillary, R., Mitchell, R., Lopez Abellan, L.J.: Status of the
13 coastal stocks of *dissostichus* spp. in east Antarctica (Divisions 58.4.1 and
14 58.4.2) CCAMLR Science **16**, 71-100 (2009)
- 15 Agnew, D.J., Kirkwood, G.P.: A statistical method for estimating the level of IUU
16 fishing: Application to CCAMLR subarea 48.3 CCAMLR Science **12** 119-141
17 (2005)
- 18 Anisimov, O.A., Vaughan, D.G., Callaghan, T.V., Furgal, C., Marchant, H., Prowse,
19 T.D., Vilhjálmsson, H., Walsh, J.E.: Polar regions (Arctic and Antarctic). In:
20 Parry, M.L., Canziani, O.F., Palutikof, J.P., van der Linden, P.J., Hanson, C.E.
21 (eds.) *Climate Change 2007: Impacts, Adaptation and Vulnerability*.
22 Contribution of Working Group II to the Fourth Assessment Report of the
23 Intergovernmental Panel on Climate Change. pp. 653-685. Cambridge
24 University Press, Cambridge (2007)
- 25 Atkinson, A., Shreeve, R.S., Hirst, A.G., Rothery, P., Tarling, G.A., Pond, D.W.,
26 Korb, R., Murphy, E.J., Watkins, J.L.: Natural growth rates of Antarctic krill
27 (*Euphausia superba*): II. Predictive models based on food, temperature, body
28 length, sex, and maturity stage. *Limnol. Oceanogr.* **51**, 973–987 (2006)
- 29 Atkinson, A., Siegel, V., Pakhomov, E.A., Jessopp, M.J., Loeb, V.: A re-appraisal of
30 the total biomass and annual production of Antarctic krill. *Deep Sea Research*
31 Part I: Oceanographic Research Papers **56**, 727-740 (2009)
- 32 Atkinson, A., Siegel, V., Pakhomov, E.A., Rothery, P.: Long-term decline in krill
33 stock and increase in salps within the Southern Ocean. *Nature* **432**, 100-103
34 (2004)
- 35 Ballerini, T., Hofmann, E.E., Ainley, D.G., Daly, K., Marrari, M., Ribic, C.A., Smith,
36 W.O., Steele, J.H.: Productivity and linkages of the food web of the southern
37 region of the Western Antarctic Peninsula continental shelf. *Progress in*
38 *Oceanography* **122**, 10-29 (2014)
- 39 Barbraud, C., Heimerskirch, H.: Emperor penguins and climate change. *Nature* **411**,
40 183-186 (2001)
- 41 Barnes, D.K.A., Peck, L.S.: Vulnerability of Antarctic shelf biodiversity to predicted
42 regional warming. *Climate Research* **37**, 149-163 (2008)
- 43 Beddington, J.R., May, R.M.: Maximum sustainable yields in systems subject to
44 harvesting at more than one trophic level. *Mathematical Biosciences* **51**, 261-
45 281 (1980)
- 46 Beddington, J.R., May, R.M.: The harvesting of interacting species in a natural
47 ecosystem. *Scientific American* **247**, 42-50 (1982)

- 1 Block, B.A., Jonsen, I.D., Jorgensen, S.J., Winship, A.J., Shaffer, S.A., Bograd, S.J.,
2 Hazen, E.L., Foley, D.G., Breed, G.A., Harrison, A.L., Ganong, J.E.,
3 Swithenbank, A., Castleton, M., Dewar, H., Mate, B.R., Shillinger, G.L.,
4 Schaefer, K.M., Benson, S.R., Weise, M.J., Henry, R.W., Costa, D.P.:
5 Tracking apex marine predator movements in a dynamic ocean. *Nature*
6 **475**(7354), 86-90 (2011). doi:10.1038/nature10082
- 7 Bokhorst, S., Huiskes, A., Convey, P., Sinclair, B.J., Lebouvier, M., Van de Vijver,
8 B., Wall, D.H.: Microclimate impacts of passive warming methods in
9 Antarctica: implications for climate change studies. *Polar Biology* **34**, 1421–
10 1435 (2011)
- 11 Boltovskoy, D.: South Atlantic zooplankton. Backhuys Publishers, Leiden,
12 Netherlands (1999)
- 13 Bracegirdle, T.J., Stephenson, D.B.: Higher precision estimates of regional polar
14 warming by ensemble regression of climate model projections. *Climate*
15 *Dynamics* **39**, 2805-2821 (2012)
- 16 Brandt, A., Gooday, A.J., Brandao, S.N., Brix, S., Brokeland, W., Cedhagen, T.,
17 Choudhury, M., Cornelius, N., Danis, B., De Mesel, I., Diaz, R.J., Gillan,
18 D.C., Ebbe, B., Howe, J.A., Janussen, D., Kaiser, S., Linse, K., Maljutina, M.,
19 Pawlowski, J., Raupach, M., Vanreusel, A.: First insights into the biodiversity
20 and biogeography of the Southern Ocean deep sea. *Nature* **447**(7142), 307-311
21 (2007)
- 22 Candy, S.G.: Modelling catch and effort data using generalised linear models, the
23 tweedie distribution, random vessel effects and random stratum-by-year
24 effects. *CCAMLR Science* **11**, 59-80 (2004)
- 25 Candy, S.G., Constable, A.J.: An integrated stock assessment for the Patagonian
26 toothfish (*Dissostichus eleginoides*) for the Heard and McDonald islands using
27 CASAL. *CCAMLR Science* **15**, 1-34 (2008)
- 28 Candy, S.G., Constable, A.J., Lamb, T., Williams, R.: A von Bertalanffy growth
29 model for toothfish at heard island fitted to length-at-age data and compared to
30 observed growth from mark-recapture studies. *CCAMLR Science* **14**, 43-66
31 (2007)
- 32 Ceia, F.R., Phillips, R.A., Ramos, J.A., Cherel, Y., Vieira, R.P., Richard, P., Xavier,
33 J.C.: Short- and long-term consistency in the foraging niche of wandering
34 albatrosses. *Marine Biology* **159**, 1581-1591 (2012)
- 35 Cherel, Y., Hobson, K.: Stable isotopes, beaks and predators: a new tool to study the
36 trophic ecology of cephalopods, including giant and colossal squids. *Proc R*
37 *Soc Lond B* **272**, 1601-1607 (2005)
- 38 Clark, J.M., Agnew, D.J.: Estimating the impact of depredation by killer whales and
39 sperm whales on longline fishing for toothfish (*Dissostichus eleginoides*)
40 around South Georgia. *CCAMLR Science* **17**, 163-178 (2010)
- 41 Constable, A.J., De la mare, W.K., Agnew, D.J., Everson, I., Miller, D.: Managing
42 fisheries to conserve the Antarctic marine ecosystem: practical
43 implementation of the Convention on the Conservation of Antarctic Marine
44 Living Resources (CCAMLR). *ICES Journal of Marine Science* **57**, 778-791
45 (2000)
- 46 Constable, A.J., Melbourne-Thomas, J., Corney, S.P., Arrigo, K., Barbraud, C.,
47 Barnes, D., Bindoff, N., Boyd, P., Brandt, A., Costa, D.P., Davidson, A.,
48 Ducklow, H., Emmerson, L., Fukuchi, M., Gutt, J., Hindell, M.A., Hofmann,
49 E.E., Hosie, G., Iida, T., Jacob, S., Johnston, N.M., Kawaguchi, S., Koubbi,
50 P., Lea, M.-A., Makhado, A., Massom, R., Meiners, K., Meredith, M.,

- 1 Murphy, E., Nicol, S., Richerson, K., Riddle, M.J., Rintoul, S.R., Walker
2 Smith Jr., W., Southwell, C., Stark, J.S., Sumner, M., Swadling, K.,
3 Takahashi, K., Trathan, P.N., Welsford, D., Weimerskirch, H., Westwood, K.,
4 Wienecke, B., Wolf-Gladrow, D., Wright, S., Xavier, J.C., Ziegler, P.: Change
5 in Southern Ocean ecosystems I: How changes in physical habitats directly
6 affect marine biota. *Global change biology* (in press)
- 7 Convey, P.: Antarctic ecosystems. In: Levin, S.A. (ed.) *Encyclopedia of Biodiversity*.
8 pp. 179-188. Waltham, MA, Academic Press, (2013)
- 9 Convey, P., Aitken, S., di Prisco, G., Gill, M.J., Coulson, S.J., Barry, T., Jónsdóttir,
10 I.S., Dang, P.T., Hik, D., Kulkarni, T., Lewis, G.: The impacts of climate
11 change on circumpolar biodiversity. *Biodiversity* **13**, 134-143 (2012)
- 12 Cornejo-Donoso, J., Antezana, T.: Preliminary trophic model of the Antarctic
13 Peninsula Ecosystem (Sub-area CCAMLR 48.1). *Ecological modelling* **218**, 1-
14 17 (2008)
- 15 Croxall, J.P.: Southern-Ocean Environmental-Changes - Effects on Seabird, Seal and
16 Whale Populations. *Philos. Trans. R. Soc. Lond. Ser. B-Biol. Sci.* **338**(1285),
17 319-328 (1992)
- 18 Croxall, J.P., Silk, J.R.D., Phillips, R.A., Afanasyev, V., Briggs, D.R.: Global
19 circumnavigations: tracking year-round ranges of nonbreeding albatrosses.
20 *Science* **307**, 249-250 (2005)
- 21 Deagle, B.E., Gales, N.J., Evans, K., Jarman, S.N., Robinson, S., Trebilco, R.,
22 Hindell, M.A.: Studying seabird diet through genetic analysis of faeces: a case
23 study on macaroni penguins (*Eudyptes chrysolophus*). *PLoS ONE* **2**, e831
24 (2007)
- 25 Egevang, C., Stenhouse, I.J., Phillips, R.A., Petersen, A., Fox, J.W., Silk, J.R.D.:
26 Tracking of Arctic terns *Sterna paradisaea* reveals longest animal migration.
27 *Proceedings of the National Academy of Sciences* (2010)
- 28 FAO: The state of world fisheries and aquaculture. Part 1. World review of fisheries
29 and aquaculture. Food and Agriculture Organization of the United Nations,
30 Rome (2012)
- 31 Fretwell, P.T., LaRue, M.A., Morin, P., Kooyman, G.L., Wienecke, B., Ratcliffe, N.,
32 Fox, A.J., Fleming, A.H., Porter, C., Trathan, P.N.: An emperor penguin
33 population estimate: the first global, synoptic survey of a species from space.
34 *PLoS ONE* **7**, e33751 (2012)
- 35 Garcia, S.M.: The precautionary approach to fisheries and its implications for fishery
36 research, technology and management: an updated review. . In: FAO.
37 Precautionary approach to fisheries. Part 2: scientific papers, vol. 350 Part 2.
38 p. 210. FAO Fisheries Technical Paper Rome (1996)
- 39 Grant, S.M., Hill, S.L., Fretwell, P.: Spatial distribution of management measures,
40 Antarctic krill catch and Southern Ocean bioregions: implications for
41 conservation planning. *CCAMLR Science* **20**, 1-20 (2013a)
- 42 Grant, S.M., Hill, S.L., Trathan, P.N., Murphy, E.J.: Ecosystem services of the
43 Southern Ocean: trade-offs in decision-making. *Antarctic Science* **25**, 603-617
44 (2013b)
- 45 Griffiths, H.J.: Antarctic Marine Biodiversity: What Do We Know About the
46 Distribution of Life in the Southern Ocean? *PLoS ONE* **5**(8), e11683 (2010)
- 47 Hazen, E.L., Jorgensen, S., Rykaczewski, R.R., Bograd, S.J., Foley, D.G., Jonsen,
48 I.D., Shaffer, S.A., Dunne, J.P., Costa, D.P., Crowder, L.B., Block, B.A.:
49 Predicted habitat shifts of Pacific top predators in a changing climate. *Nature*
50 *Clim. Change* **3**(3), 234-238 (2013)

- 1 Hecht, T.: A guide to the otoliths of Southern Ocean fishes. South African Journal of
2 Antarctic Research **17**, 2-87 (1987)
- 3 Hill, S.L.: From strategic ambiguity to technical reference points in the Antarctic krill
4 fishery: the worst journey in the world? Environmental Conservation **40**, 394-
5 405 (2013a)
- 6 Hill, S.L.: Prospects for a sustainable increase in the availability of long chain omega
7 3s: Lessons from the Antarctic krill fishery. In: De Meester, F., Watson, R.R.,
8 Zibadi, S. (eds.) Omega 6/3 Fatty Acids Functions, Sustainability Strategies
9 and Perspectives pp. 267-296. Humana Press, New York (2013b)
- 10 Hill, S.L., Cannon, M.: A potential feedback approach to Ecosystem Based
11 Management: Model Predictive Control of the Antarctic krill fishery.
12 CCAMLR Science **20**, 119-138 (2013)
- 13 Hill, S.L., Keeble, K., Atkinson, A., Murphy, E.J.: A food web model to explore
14 uncertainties in the South Georgia shelf pelagic ecosystem. Deep-Sea Res. II
15 **59-60**, 237-252 (2012)
- 16 Hill, S.L., Matthews, J.: The sensitivity of multiple output statistics to input
17 parameters in a krill-predator- fishery ecosystem dynamics model. CCAMLR
18 Science **20**, 97-118 (2013)
- 19 Hill, S.L., Murphy, E.J., Reid, K., Trathan, P.N., Constable, A.: Modelling Southern
20 Ocean ecosystems: krill, the food-web, and the impacts of fishing. Biological
21 Reviews **81**, 581-608 (2006)
- 22 Hill, S.L., Phillips, T., Atkinson, A.: Potential Climate Change Effects on the Habitat
23 of Antarctic Krill in the Weddell Quadrant of the Southern Ocean. PLoS ONE
24 **8**, e72246 (2013)
- 25 Hill, S.L., Reid, K., Thorpe, S.E., Hinke, J., Watters, G.M.: A compilation of
26 parameters for ecosystem dynamics models of the Scotia Sea- Antarctic
27 Peninsula region. CCAMLR Science **14**, 1-25 (2007a)
- 28 Hill, S.L., Trathan, P.N., Agnew, D.J.: The risk to fishery performance associated
29 with spatially resolved management of Antarctic krill (*Euphausia superba*)
30 harvesting. ICES Journal of Marine Science **66**, 2148–2154 (2009)
- 31 Hill, S.L., Watters, G.M., Punt, A.E., McAllister, M.K., Le Quere, C., Turner, J.:
32 Model uncertainty in the ecosystem approach to fisheries. Fish and Fisheries
33 **8**, 315-333 (2007b)
- 34 Hillary, R.M., Kirkwood, G.P., Agnew, D.J.: An assessment of toothfish in Subarea
35 48.3 using CASAL. CCAMLR Science **13**, 65-95 (2006)
- 36 IPCC: Climate Change 2007: Synthesis report. . Contribution of Working Groups I, II
37 and III to the Fourth Assessment Report of the Intergovernmental Panel on
38 Climate Change. IPCC, Geneva, Switzerland, (2007)
- 39 Jenouvrier, S., Holland, M., Stroeve, J., Barbraud, C., Weimerskirch, H., Serreze, M.,
40 Caswell, H.: Effects of climate change on an emperor penguin population:
41 analysis of coupled demographic and climate models. Global Change Biology
42 **18**(9), 2756-2770 (2012)
- 43 Jouventin, P., Weimerskirch, H.: Satellite tracking of wandering albatrosses. Nature
44 **343**, 746-748 (1990)
- 45 Kaiser, B., Zicus, S., Allen, B.: Polar Science and Global Climate: An International
46 Resource for Education & Outreach. Pearson Custom Publishing (2010)
- 47 Karnovsky, N.J., Hobson, K.A., Iverson, S.J.: From lavage to lipids: estimating diets
48 of seabirds. Mar. Ecol.-Prog. Ser. **451**, 263-284 (2012)

- 1 Kawaguchi, S., Ishida, A., King, R., Raymond, B., Waller, N., Constable, A., Nicol,
2 S., Wakita, M., Ishimatsu, A.: Risk maps for Antarctic krill under projected
3 Southern Ocean acidification. *Nature Clim. Change* **3**(9), 843-847 (2013)
- 4 Kennicutt, M.C., Chown, S.L., Cassano, J., Liggett, D., Peck, L.S., Massom, R.,
5 Rintoul, S.R., Storey, J., Vaughan, D.G., Wilson, T.J., Allison, I., Ayton, J.,
6 Badhe, R., Baeseman, J., Barrett, P.J., Bell, R.E., Bertler, N., Bo, S., Brandt,
7 A., Bromwich, D., Cary, C., Clark, M.S., Convey, P., Costa, E.S., Cowan, D.,
8 Deconto, R., Dunbar, R., Elfring, C., Escutia, C., Francis, J., Fricker, H.A.,
9 Fukuchi, M., Gilbert, N., Gutt, J., Havermans, C., Hik, D., Hosie, G., Jones,
10 C., Kim, Y.D., Le Maho, Y., Lee, S.H., Leppe, M., Leitchenkov, G.,
11 Lipenkov, X.L.V., Lochte, K., López-Martínez, J., Lüdecke, C., Lyons, W.,
12 Marensi, S., Miller, H., Morozova, P., Naish, T., Nayak, S., Ravindra, R.,
13 Retamales, J., Ricci, C.A., Rogan-Finnemore, M., Ropert-Coudert, Y., Samah,
14 A.A., Sanson, L., Scambos, T., Schloss, I., Shiraishi, K., Siegert, M.J.,
15 Simões, J., Sparrow, M.D., Storey, B., Wall, D., Walsh, J.C., Wilson, G.,
16 Winther, J.G., Xavier, J.C., Yang, H., Sutherland, W.J.: Future directions in
17 Antarctic and Southern Ocean science: 1st SCAR Horizon Scan. *Antarctic*
18 *Science* (in press-a)
- 19 Kennicutt, M.C.I., Chown, S.L., Cassano, J., Liggett, D., Massom, R., Peck, L.,
20 Rintoul, S.R., Storey, J., Vaughan, D.G., Wilson, T., Sutherland, W.J.:
21 Antarctic and Southern Ocean Science in the 21st Century. *Nature* (in press-b)
- 22 Kinzey, D., Watters, G., Reiss, C.S.: Effects of recruitment variability and natural
23 mortality on generalised yield model projections and the CCAMLR decision
24 rules for Antarctic krill. *CCAMLR Science* **20**, 81-96 (2013)
- 25 Krupnik, I., Allison, I., Bell, R., Cutler, P., Hik, D., López-Martínez, J., Rachold, V.,
26 Sarukhanian, E., Summerhayes, C.: Understanding earth's polar challenges :
27 International Polar Year 2007-2008, vol. no. 1. University of the Arctic,
28 Rovaniemi, Finland/CCI Press (2011)
- 29 Laws, R.M.: Seals and Whales of the Southern Ocean. *Phil.Trans.R.Soc.Lond.B* **279**,
30 81-96 (1977)
- 31 Lincoln, F.C.: Calculating waterfowl abundance on the basis of banding returns, vol.
32 118. Cir. U.S. Department of Agriculture, (1930)
- 33 Link, J.S., Ihde, T.F., Harvey, C.J., Gaichas, S.K., Field, J.C., Brodziak, J.K.T.,
34 Townsend, H.M., Peterman, R.M.: Dealing with uncertainty in ecosystem
35 models: The paradox of use for living resources. *Progress in Oceanography*
36 **102**, 102-114 (2012)
- 37 Link, W.A., Barker, R.J.: Bayesian Inference with Ecological Applications. Academic
38 Press, London (2010)
- 39 Magnusson, A., Punt, A., Hilborn, R.: Measuring uncertainty in fisheries stock
40 assessment: the delta method, bootstrap, and MCMC. *Fish and Fisheries* **14**(3)
41 (2012)
- 42 Martínez, I.: Emperor penguin In *Handbook of the Birds of the World* vol. 1. Lynx
43 Edicions, Barcelona (1992)
- 44 McLeod, K.L., Leslie, H.M.: Why ecosystem-based management? In: McLeod, K.,
45 Leslie, H. (eds.) *Ecosystem-based management for the oceans*. pp. 3-12.
46 Island Press, Washington DC (2009)
- 47 Meredith, M.P., King, J.C.: Rapid climate change in the ocean west of the Antarctic
48 Peninsula during the second half of the 20th century. *Geophys. Res. Lett.* **32**,
49 L19604 (2005)

- 1 Montes-Hugo, M., Doney, S.C., Ducklow, H.W., Fraser, W., Martinson, D.,
2 Stammerjohn, S.E., Schofield, O.: Recent changes in phytoplankton
3 communities associated with rapid regional climate change along the Western
4 Antarctic Peninsula. *Science* **323**, 1470-1473 (2009)
- 5 Murphy, E.J., Cavanagh, R.D., Hofmann, E.E., Hill, S.L., Constable, A.J., Costa,
6 D.P., Pinkerton, M.H., Johnston, N.M., Trathan, P.N., Klinck, J.M., Wolf-
7 Gladrow, D.A., Daly, K.L., Maury, O., Doney, S.C.: Developing integrated
8 models of Southern Ocean food webs: including ecological complexity,
9 accounting for uncertainty and the importance of scale. *Progress in*
10 *Oceanography* **102**, 74-92 (2012)
- 11 Murphy, E.J., Hofmann, E.E.: End-to-end in Southern Ocean ecosystems. *Current*
12 *opinion in Environmental Sustainability* (2013)
- 13 Murphy, E.J., Hofmann, E.E., Watkins, J.L., Johnston, N.M., Piñones, A., Ballerini,
14 T., Hill, S.L., Trathan, P.N., Tarling, G.A., Cavanagh, R.A., Young, E.F.,
15 Thorpe, S.E., Fretwell, P.: Comparison of the structure and function of
16 Southern Ocean regional ecosystems: The Antarctic Peninsula and South
17 Georgia. *Journal of Marine Systems* **109-110**(0), 22-42 (2013)
- 18 Murphy, E.J., Morris, D.J., Watkins, J.L., Priddle, J.: Scales of Interaction Between
19 Antarctic Krill and the Environment. In: Sahrhage, D. (ed.) *Antarctic Ocean*
20 *and Resources Variability*. pp. 120-130. Springer Berlin Heidelberg, (1988)
- 21 Nevitt, G.A., Losekoot, M., Weimerskirch, H.: Evidence for olfactory search in
22 wandering albatross, *Diomedea exulans*. *Proc. Nat. Acad. Sci. USA* **105**,
23 4576-4581 (2008)
- 24 Nicol, S., Foster, J., S., K.: The fishery for Antarctic krill—recent developments. *Fish*
25 *and Fisheries* **13**, 30-40 (2012)
- 26 Orr, J.C., Fabry, V.J., Aumont, O., Bopp, L., Doney, S.C., Feely, R.A., Gnanadesikan,
27 A., Gruber, N., Ishida, A., Joos, F., Key, R.M., Lindsay, K., Maier-Reimer, E.,
28 Matear, R., Monfray, P., Mouchet, A., Najjar, R.G., Plattner, G.-K., Rodgers,
29 K.B., Sabine, C.L., Sarmiento, J.L., Schlitzer, R., Slater, R.D., Totterdell, I.J.,
30 Weirig, M.-F., Yamanaka, Y., Yool, A.: Anthropogenic ocean acidification
31 over the twenty-first century and its impact on calcifying organisms. *Nature*
32 **437**(7059), 681-686 (2005)
- 33 Parmelee, D.F., Parmelee, J.M., Fuller, M.R.: Ornithological investigations and
34 Palmer Station: the first long-distance tracking of seabirds by satellites.
35 *Antarctic Journal of the United States* **20**, 162–163 (1985)
- 36 Parnell, A.C., Inger, R., Bearhop, S., Jackson, A.L.: Source partitioning using stable
37 isotopes: coping with too much variation. *PLoS ONE* **5**, e9672 (2010)
- 38 Peck, L.S.: Prospects for surviving climate change in Antarctic aquatic species. .
39 *Frontiers in Zoology* **2**, 2-9 (2005)
- 40 Peck, L.S., Barnes, D.K.A., Cook, A.J., Fleming, A.H., Clarke, A.: Negative feedback
41 in the cold: ice retreat produces new carbon sinks in Antarctica. *Global*
42 *Change Biology* **16**(9), 2614-2623 (2010). doi:10.1111/j.1365-
43 2486.2009.02071.x
- 44 Phillips, R.A., Croxall, J.P., Silk, J.R.D., Briggs, D.R.: Foraging ecology of
45 albatrosses and petrels from South Georgia: two decades of insights from
46 tracking technologies. *Aquatic Conservation: Marine and Freshwater*
47 *Ecosystems* **17**, S6-S21 (2008)
- 48 Phillips, R.A., Silk, J.R.D., Croxall, J.P., Afanasyev, V., Briggs, D.R.: Accuracy of
49 geolocation estimates for flying seabirds. *Marine Ecology Progress Series* **266**,
50 265-272 (2004)

- 1 Phillips, R.A., Xavier, J.C., Croxall, J.P.: Effects of satellite transmitters on
2 albatrosses and petrels. *The Auk* **120**(4), 1082-1090 (2003)
- 3 Pinkerton, M.H., Bradford-Grieve, J.M., Hanchet, S.M.: A balanced model of the
4 food web of the Ross Sea, Antarctica. *CCAMLR Science* **17**, 1-31 (2010)
- 5 Plagányi, É.E., Butterworth, D.S.: The Scotia Sea krill fishery and its possible impacts
6 on dependent predators: modeling localized depletion of prey. *Ecological*
7 *Applications* **22**, 748-761 (2012)
- 8 Polovina, J.J.: Model of a coral reef ecosystem I. The ECOPATH model and its
9 application to French Frigate Shoals. *Coral Reefs* **3**, 1-11 (1984)
- 10 Prince, P.A., Wood, A.G., Barton, T.R., Croxall, J.P.: Satellite-tracking wandering
11 albatrosses *Diomedea exulans* in the South Atlantic. *Antarctic Science* **4**, 31-
12 36 (1992)
- 13 Punt, A.E., Smith, A.D.M.: The gospel of maximum sustainable yield in fisheries
14 management: birth, crucifixion and reincarnation. In: Reynolds, J.D., Mace,
15 G.M., Redford, K.H., Robinson, J.G. (eds.) *Conservation of exploited species*.
16 pp. 41-66. Cambridge University Press, Cambridge (2001)
- 17 Rademeyer, R.A., Plagányi, É.E., Butterworth, D.S.: Tips and tricks in designing
18 management procedures. *ICES Journal of Marine Science* **64**, 618–625 (2007)
- 19 Ramos, R., Gonzalez-Solis, J.: Trace me if you can: the use of intrinsic
20 biogeochemical markers in marine top predators. *Frontiers in Ecology and the*
21 *Environment* **10**(5), 258-266 (2012)
- 22 Ratcliffe, N., Trathan, P.N.: A review of the diet and foraging movements of penguins
23 breeding within the CCAMLR area. In. BAS, Cambridge unpubl. data, (2011)
- 24 Reid, K.: A guide to the use of otoliths in the study of predators at South Georgia.
25 British Antarctic Survey, Cambridge (1996)
- 26 Rignot, E., Bamber, J.L., Van Den Broeke, M.R., Davis, C., Li, Y.H., Van De Berg,
27 W.J., Van Meijgaard, E.: Recent Antarctic ice mass loss from radar
28 interferometry and regional climate modelling. *Nature Geoscience* **1**, 106-110
29 (2008)
- 30 Rodhouse, P.G., Xavier, J.C., Griffiths, H.: Southern Ocean squid. In: De Broyer, C.,
31 Koubbi, P., Griffiths, H., Danis, B., David, B., Grant, S., Gutt, J., Held, C.,
32 Hosie, G., Huettmann, F., Post, A., Raymond, B., Ropert-Coudert, Y., van de
33 Putte, A. (eds.) *The CAML / SCAR-MarBIN Biogeographic Atlas of the*
34 *Southern Ocean*. p. 400. Scientific Committee on Antarctic Research,
35 Cambridge (in press)
- 36 Sarmiento, J.L., Gruber, N., Brzezinski, M.A., Dunne, J.P.: High-latitude controls of
37 thermocline nutrients and low latitude biological productivity. *Nature*
38 **427**(6969), 56-60 (2004)
- 39 Smetacek, V., Nicol, S.: Polar ocean ecosystems in a changing world. *Nature* **437**,
40 362-368 (2005)
- 41 Smith, A.D., Brown, C.J., Bulman, C.M., Fulton, E.A., Johnson, P., Kaplan, I.C.,
42 Lozano-Montes, H., Mackinson, S., Marzloff, M., Shannon, L.J., Shin, Y.J.,
43 Tam, J.: Impacts of fishing low-trophic level species on marine ecosystems.
44 *Science* **333**, 1147-1150 (2011)
- 45 Stock, C.A., Alexander, M.A., Bond, N.A., Brander, K.M., Cheung, W.W.: On the
46 use of IPCC-class models to assess the impact of climate on living marine
47 resources. *Progress in Oceanography* **88**, 1-27 (2011)
- 48 Sumner, M.D., Wotherspoon, S.J., Hindell, M.A.: Bayesian estimation of animal
49 movement from archival and satellite tags. *PLoS ONE* **4**, e7324 (2009)

- 1 Tavares, S., Xavier, J.C., Phillips, R.P., Pereira, M.E., Pardal, M.A.: Influence of age,
2 sex and breeding status on mercury accumulation patterns in wandering
3 albatrosses *Diomedea exulans*. *Environmental pollution* **181**, 315-320 (2013)
- 4 Turner, J., Barrand, N.E., Bracegirdle, T.J., Convey, P., Hodgson, D.A., Jarvis, M.,
5 Jenkins, A., Marshall, G., Meredith, M.P., Roscoe, H., Shanklin, J., French, J.,
6 Goose, H., Guglielmin, M., Gutt, J., Jacobs, S., Kennicutt, M.C.I., Masson-
7 Delmotte, V., Mayewski, P., Navarro, F., Robinson, S., Scambos, T., Sparrow,
8 M., Summerhayes, C., Speer, K., Klepikov, A.: Antarctic climate change and
9 the environment: an update. *Polar Record* **FirstView**, 1-23 (2013a)
- 10 Turner, J., Bindschadler, R., Convey, P., di Prisco, G., Fahrbach, E., Gutt, J.,
11 Hodgson, D., Mayewski, P., Summerhayes, C.: Antarctic climate change and
12 the environment. Scientific Committee for Antarctic Research, Cambridge,
13 UK, (2009)
- 14 Turner, J., Maksym, T., Phillips, T., Marshall, G.J., Meredith, M.P.: The impact of
15 changes in sea ice advance on the large winter warming on the western
16 Antarctic Peninsula. *International Journal of Climatology* **33**(4), 852-861
17 (2013b)
- 18 Turner, J., Thomas, J.B., Phillips, T., Marshall, G.J., Hosking, J.S.: An initial
19 assessment of antarctic sea ice extent in the cmip5 models. *J. Climate* **26**,
20 1473–1484 (2013c)
- 21 Ulanowicz, R.E., Puccia, C.J.: Mixed trophic impacts in ecosystems. *Coenoses* **5**, 7-
22 16 (1990)
- 23 Walton, D.: Antarctica: Global science from a frozen continent. Cambridge
24 University Press, (2013)
- 25 Walton, D., Xavier, J.C., May, I., Huffman, L.: Polar Educators International – a new
26 initiative for schools. *Antarctic Science* **25**, 473 (2013)
- 27 Waluda, C.M., Hill, S.L., Peat, H.J., Trathan, P.N.: Diet variability and reproductive
28 performance of macaroni penguins (*Eudyptes chrysolophus*) at Bird Island,
29 South Georgia. *Marine Ecology Progress Series* **466**, 261-274 (2012)
- 30 Watters, G.M., Hill, S.L., Hinke, J., Matthews, J., Reid, K.: Decision making for
31 ecosystem based management: evaluating options for a krill fishery with an
32 ecosystem dynamics model. *Ecological Applications* **23**, 710-725 (2013)
- 33 Webber, D.N., Parker, S.J.: Estimating unaccounted fishing mortality in the Ross sea
34 region and Amundsen sea (CCAMLR subareas 88.1 and 88.2) bottom longline
35 fisheries targeting Antarctic toothfish. *CCAMLR Science* **19**, 17-30 (2012)
- 36 Weimerskirch, H., Bonadonna, F., Bailleul, F., Mabile, G., Dell'Omo, G., Lipp, H.-
37 P.: GPS tracking of foraging albatrosses. *Science* **295**, 1259-1259 (2002)
- 38 Wilson, R.P., Grémillet, D., Syder, J., Kierspel, M.A.M., Garthe, S., Weimerskirch,
39 H., Schafer-Neth, C., Scolaro, J.A., Bost, C.-A., Plotz, J., Nel, D.C.: Remote-
40 sensing systems and seabirds: their use, abuse and potential for measuring
41 marine environmental variables. *Marine Ecology Progress Series* **228**, 241–
42 261 (2002)
- 43 Xavier, J.C.: Predator-prey interactions between albatrosses and cephalopods at South
44 Georgia. University of Cambridge (2003)
- 45 Xavier, J.C., Allcock, L., Chérel, Y., Lipinski, M.R., Gomes-Pereira, J.N., Pierce, G.,
46 Rodhouse, P.G.K., Rosa, R., Shea, L., Strugnell, J., Vidal, E., Villanueva, R.,
47 Ziegler, A.: Future challenges in cephalopod research. *Journal of the Marine*
48 *Biological Association of the UK* (in press)
- 49 Xavier, J.C., Barbosa, A., Agustí, S., Alonso-Sáez, L., Alvito, P., Ameneiro, J., Avila,
50 C., Baeta, A., Canário, A., Carmona, R., Catry, P., Ceia, F., Clark, M.S.,

- 1 Cristobo, F.J., Cruz, B., Duarte, C.M., Figuerola, B., Gili, J.-M., Gonçalves,
2 A.R., Gordillo, F.J.L., Granadeiro, J.P., Guerreiro, M., Isla, E., Jiménez, C.,
3 López-González, P.J., Lourenço, S., Marques, J.C., Moreira, E., Mota, A.M.,
4 Nogueira, M., Núñez-Pons, L., Orejas, C., Paiva, V.H., Palanques, A.,
5 Pearson, G.A., Pedrós-Alió, C., Peña Cantero, A.L., Power, D.M., Ramos,
6 J.A., Rossi, S., Seco, J., Sañe, E., Serrão, E.A., Taboada, S., Tavares, S.,
7 Teixidó, N., Vaqué, D., Valente, T., Vázquez, E., Vieira, R., B., V.: Polar
8 marine biology science in Portugal and Spain: Recent advances and future
9 perspectives. *Journal of Sea Research* **83**, 9-29 (2013a)
- 10 Xavier, J.C., Cherel, Y.: Cephalopod beak guide for the Southern Ocean. British
11 Antarctic Survey, (2009)
- 12 Xavier, J.C., Cherel, Y., Roberts, J., Piatkowski, U.: How do cephalopods become
13 available to seabirds: can fish gut contents from tuna fishing vessels be a
14 major food source of deep-dwelling cephalopods? *ICES J. of Marine Science*
15 **70**, 46-49 (2013b)
- 16 Xavier, J.C., Clarke, M.R., Magalhães, M.C., Stowasser, G., Blanco, C., Cherel, Y.:
17 Current status of using beaks to identify cephalopods: III international
18 workshop and training course on cephalopod beaks, Faial Island, Azores,
19 April 2007. *Arquipélago - Life and Marine Sciences* **24**, 41-48 (2007)
- 20 Xavier, J.C., Croxall, J.P., Cresswell, K.A.: Boluses: an effective method to assess the
21 proportions of cephalopods in the diet of albatrosses. *Auk* **122**, 1182-1190
22 (2005)
- 23 Xavier, J.C., Croxall, J.P., Reid, K.: Inter-annual variation in the diet of two albatross
24 species breeding at South Georgia: implications for breeding performance.
25 *Ibis* **145**, 593-610 (2003a)
- 26 Xavier, J.C., Croxall, J.P., Trathan, P.N., Rodhouse, P.G.: Inter-annual variation in
27 the cephalopod component of the diet of wandering albatrosses *Diomedea*
28 *exulans* breeding at Bird Island, South Georgia. *Marine Biology* **142**, 611-622
29 (2003b)
- 30 Xavier, J.C., Geraint, G.A., Croxall, J.P.: Determining large scale distribution of
31 pelagic cephalopods, fish and crustaceans in the South Atlantic from
32 wandering albatross (*Diomedea exulans*) foraging data. *Ecography* **29**, 260-
33 272 (2006)
- 34 Xavier, J.C., Phillips, R.A., Cherel, Y.: Cephalopods in marine predator diet
35 assessments: why identifying upper and lower beaks is important. *ICES J. of*
36 *Marine Science* **68**, 1857-1864 (2011)
- 37 Xavier, J.C., Rodhouse, P.G., Trathan, P.N., Wood, A.G.: A Geographical
38 Information System (GIS) atlas of cephalopod distribution in the Southern
39 Ocean. *Antarctic Science* **11**(1), 61-62 (1999)
- 40 Xavier, J.C., Trathan, P.N., Croxall, J.P., Wood, A.G., Podestá, G.P., Rodhouse, P.G.:
41 Foraging ecology and interactions with fisheries of wandering albatrosses at
42 South Georgia. *Fisheries Oceanography* **13**, 324-344 (2004)
- 43 Ziegler, P.E.: Influence of data quality and quantity from a multiyear tagging program
44 on an integrated fish stock assessment. *Canadian Journal of Fisheries and*
45 *Aquatic Sciences* **70**, 1031-1045 (2013)
- 46
47
48
49
50

1
2
3
4
5
6
7
8
9
10
11
12
13
14
15
16
17
18
19
20
21
22
23
24
25
26
27
28
29
30
31
32
33
34
35
36
37
38
39
40
41
42
43
44
45
46
47
48
49
50

Figures

Figure 1. Penguins, such as macaroni penguins, are important components of the Southern Ocean ecosystem and are difficult to directly observe because of the remote and hostile conditions in which they live and the considerable distances that they travel. Nonetheless Antarctic scientists have used mathematical tools to develop ways to study their behavior and ecology in the wild, including their feeding and foraging ecology (photo by José Xavier).

Figure 2. The Antarctic continent and the Southern Ocean which surrounds it. The Polar Front is the approximate northern limit of the Southern Ocean ecosystem. Antarctic krill is a major component of this ecosystem, the main prey item for a diverse suite of predators and the focus of a developing fishery. Although Antarctic krill fishing is permitted in much of the Southern Ocean, the vast majority of the catch to date has been taken in the Scotia Sea and southern Drake Passage region ((Nicol et al. 2012; Hill 2013b). Antarctic krill abundance in this region is correlated with September sea ice extent (Atkinson et al. 2004), the average position of which (1979-2004) is shown.

Figure 3. An assessment of risk based on the results of model projections with intentionally high levels of uncertainty (Watters et al. 2013, Hill 2013a). The model represents multiple populations of each type of predator (whales, seals, fish and penguins), which are shown as colour-coded lines in the figure. Population sizes above a threshold level (in this case, 75% of its size in projections with no fishing) indicate that the ecosystem is healthy. “Risk to ecosystem health” is the proportion of simulations in which the projected predator population size was below the threshold. The figure shows how this risk increases with catch level (“proportion of regional catch limit”) and varies between three alternative spatial distributions of the catch limit (labeled A to C). The purpose of this risk assessment was to advise policy-makers on the potential effects of the three alternative spatial distributions of two different catch limits (vertical dotted lines).

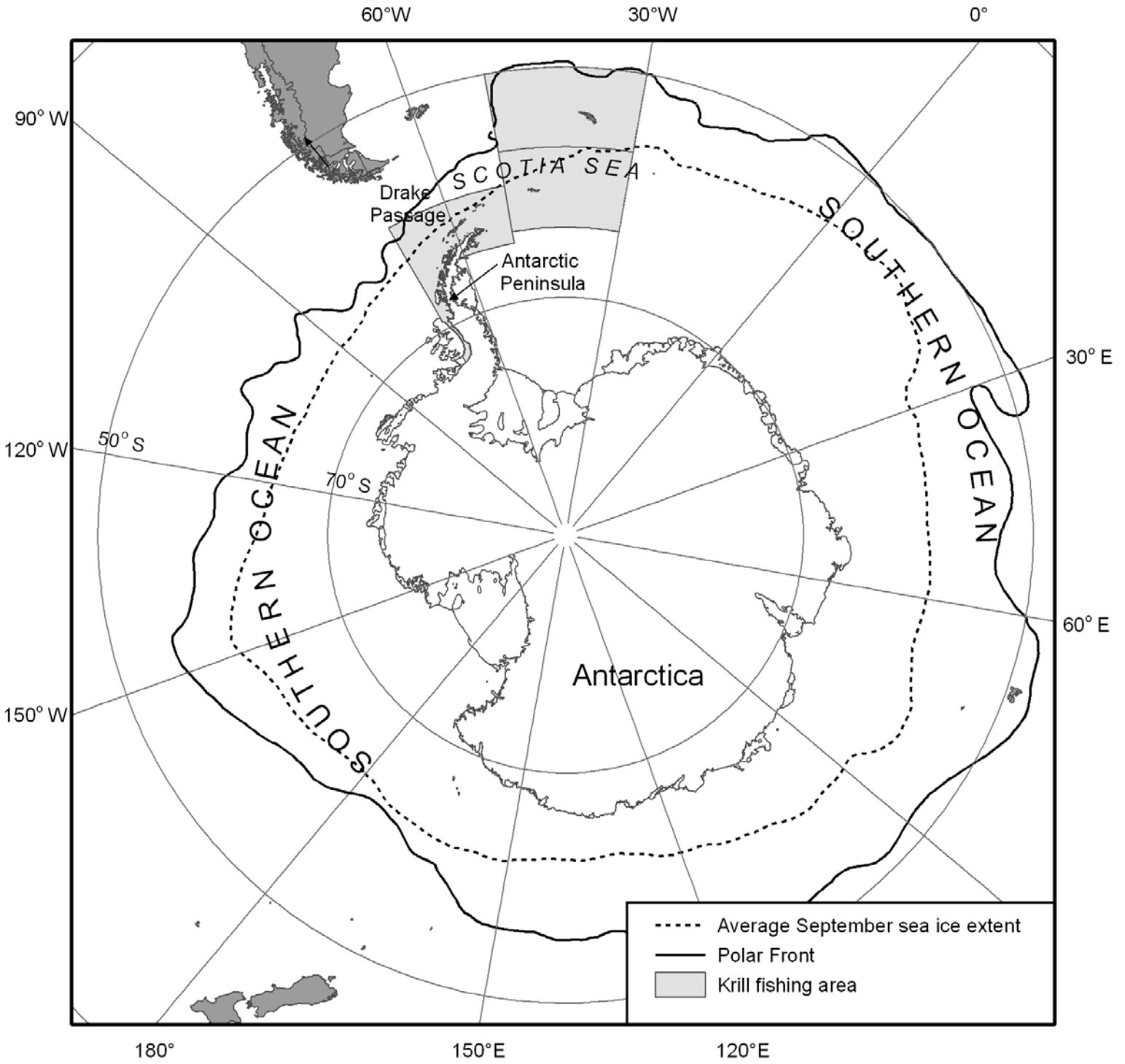
Figure 4. The biomass of a modeled krill-like species in 500 stochastic simulations using two different harvest control strategies: (A) a fixed catch limit, as is currently used to manage the Antarctic krill fishery, and (B) a feedback method which uses model predictive control (MPC) to adjust catch limits in response to information

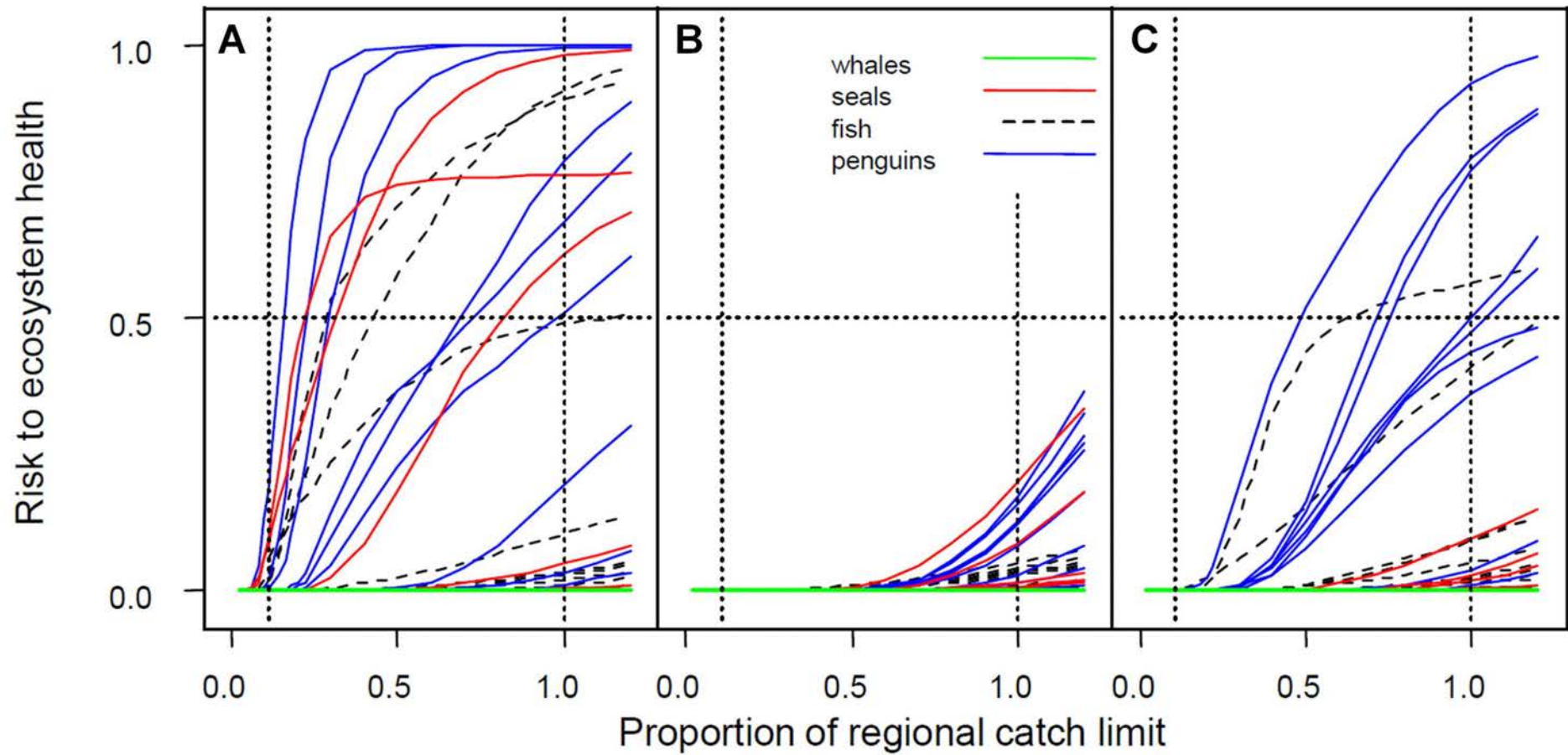
1 about the harvested stock and its predators (Hill and Cannon 2013). The green line
2 highlights a single simulation. The strategies aim to achieve a state indicated by the
3 solid horizontal line (known as the “target reference point”) and to avoid states below
4 the dashed horizontal line (known as the “limit reference point”).
5

6 **Figure 5.** The results of a study which used projections from multiple climate models
7 to drive a statistical model of Antarctic krill growth (Hill et al. 2013). The figure
8 shows the spatial pattern of projected change in gross growth potential (GGP), an
9 indicator of new biomass production, from 1997-2011 to 2070-2099. The growth
10 model represents the influence of both temperature and food availability. The panels
11 are arranged from top to bottom in order of increasing projected warming from three
12 different representative control pathways (RCPs, which control the radiative forcing
13 and hence warming in climate models). The figures are arranged from left to right in
14 order of increasing final food availability indicated by chlorophyll concentration,
15 including a 50% decrease and a 50% increase from current (observed) concentrations.
16 Additionally, the central column shows the degree of agreement between climate
17 models: Cells where 50% or more of the models project significant GGP change are
18 highlighted with stippling if 90% or more of models agree on the sign of the change,
19 and are highlighted with hatched lines if fewer than 90% agree.
20

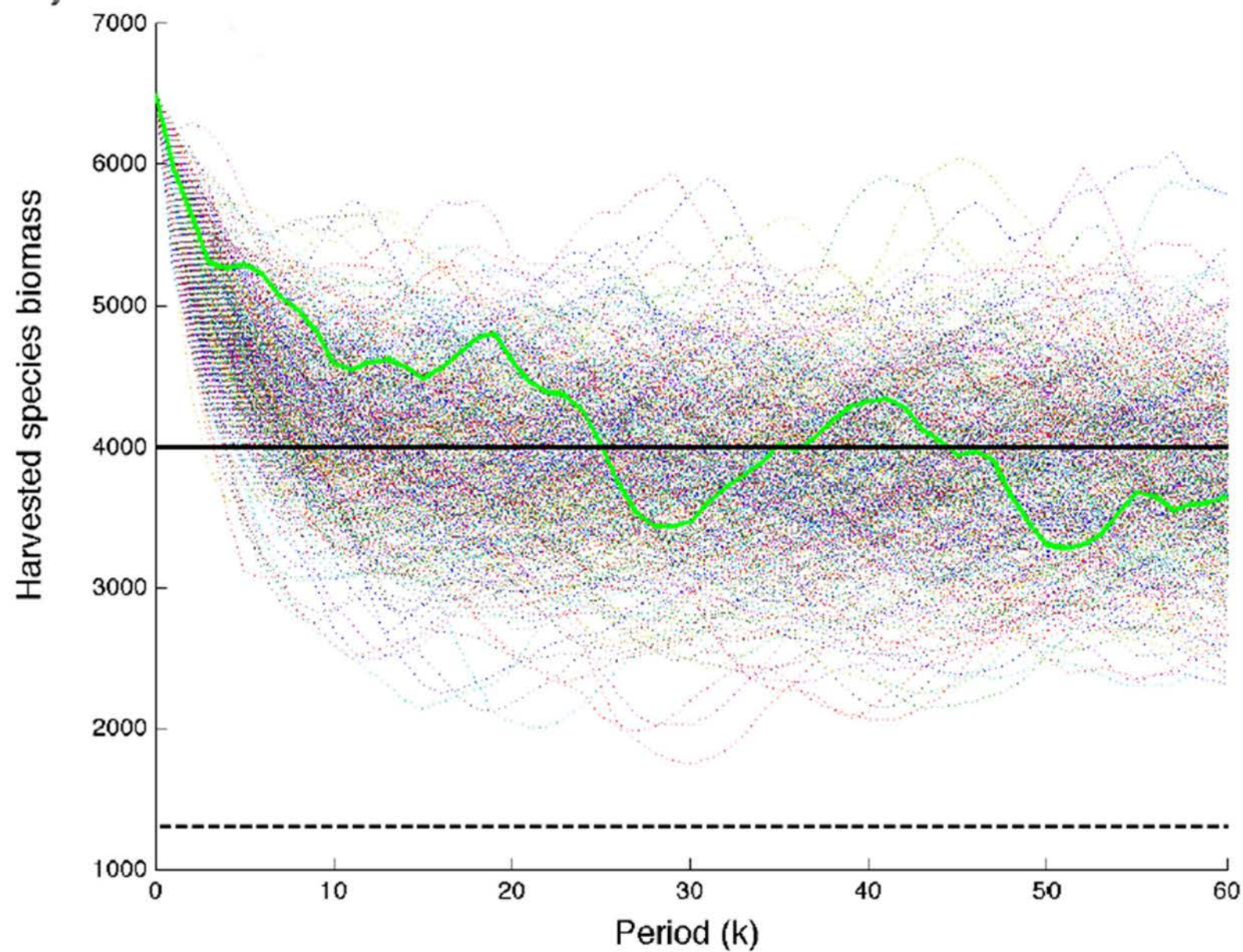
21 **Figure 6.** The location of all known emperor penguin colonies in Antarctica and the
22 estimated number of adults present in each at the time of a 2009 satellite survey
23 (Fretwell et al. 2012).

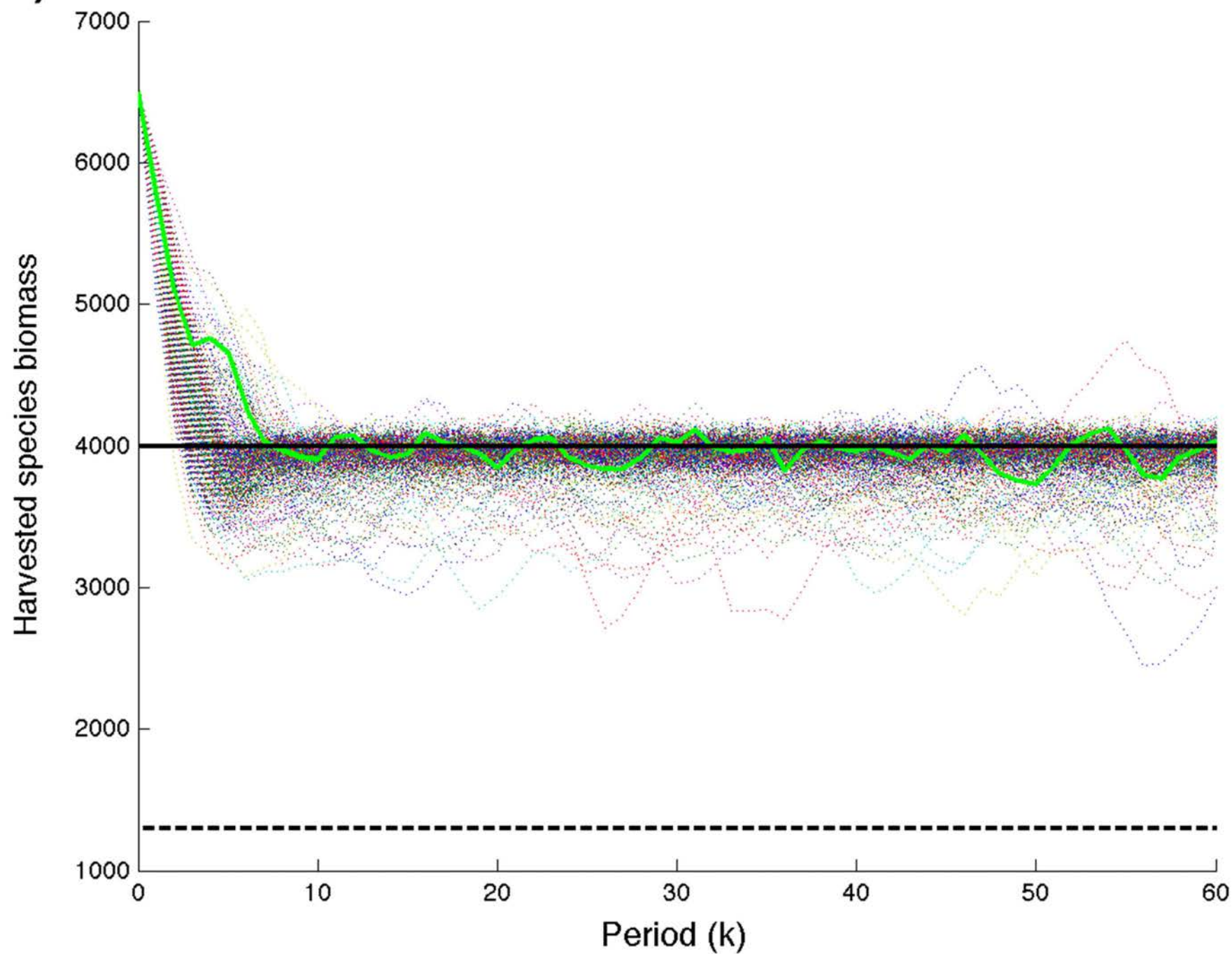






(A)



(B)

observed chlorophyll - 50%

observed chlorophyll-a

observed chlorophyll + 50%

