

# Bilateral segmental lung transplantation for children: Transplantation using split adult living-donor lower lobe

Takahiro Oto, MD,<sup>a,b</sup> Yukiko Hikasa, MD,<sup>c,d</sup> Akikazu Hagiwara, PT,<sup>e</sup> and Motomu Kobayashi, MD,<sup>c</sup>  
Okayama, Hyogo, and Tokyo, Japan

From the <sup>a</sup>Transplant Center, Okayama University Hospital, Okayama; <sup>b</sup>Thoracic Surgery, Himeji Daiichi Hospital, Hyogo; <sup>c</sup>Anesthesiology and Resuscitology, Okayama University Hospital, Okayama; <sup>d</sup>Anesthesiology, National Cancer Center, Tokyo; and <sup>e</sup>Physical Medicine and Rehabilitation, Okayama University Hospital, Okayama, Japan.

Disclosures: The authors reported no conflicts of interest.

The *Journal* policy requires editors and reviewers to disclose conflicts of interest and to decline handling or reviewing manuscripts for which they may have a conflict of interest. The editors and reviewers of this article have no conflicts of interest.

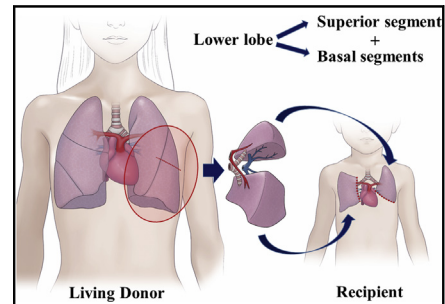
Received for publication June 3, 2020; revisions received June 3, 2020; accepted for publication June 17, 2020. Address for reprints: Takahiro Oto, MD, 2-5-1, Shikata-cho, Kita-ku, Okayama 700-8558, Japan (E-mail: [yellowpeachoto@hotmail.com](mailto:yellowpeachoto@hotmail.com)).

JTCVS Techniques 2020; ■:1-4

2666-2507

Copyright © 2020 The Authors. Published by Elsevier Inc. on behalf of The American Association for Thoracic Surgery. This is an open access article under the CC BY-NC-ND license (<http://creativecommons.org/licenses/by-nc-nd/4.0/>).

<https://doi.org/10.1016/j.xjtc.2020.06.022>



A wide communication can be seen between the right side of the aorta and the right lung.

## CENTRAL MESSAGE

In this case report, we had the chance to revisit syphilitic aortitis in the modern antibiotic era. Despite its rarity, cases of syphilitic aortitis have been increasingly reported recently.

See Commentary on page XXX.

▶ Video clip is available online.

The shortage of pediatric brain-dead donors is a significant limiting factor for lung transplantations in small children.<sup>1,2</sup> In Japan, living-donor lobar lung transplantation is a widely used alternative procedure, accounting for 33% of lung transplantations in children.<sup>3</sup> However, even lower lobe grafts might be too large to fit into a small child's chest cavity.<sup>2,4,5</sup> A bilateral segmental lung transplantation using an adult living-donor lower lobe was performed on 3 children who were considered unlikely to survive until a suitable pediatric brain-dead donor was allocated to them.

## CLINICAL SUMMARY

Between August 2014 and December 2018, 3 children age 1, 2, and 4 years with idiopathic pulmonary fibrosis underwent bilateral segmental transplantation. All 3 children were mechanically ventilated with 80% to 100% oxygen concentration before transplantation (Figure 1). Characteristics of the children and their donors are shown listed in Table 1. The children's parents provided informed consent.

The donor operation commenced before the recipient operation. Splitting of the lower lobe into superior and basal segments was completed in vivo using electrocautery (Figure 2). The intersegmental veins were identified and preserved during division of the lung parenchyma (Video 1). The segmental grafts were reinflated, and hemostasis and sealing of air leaks from the dissected surface of the graft were secured.

The recipient operation began with hilum dissection and the initiation of cardiopulmonary bypass. The donor was then heparinized, and the bronchus and pulmonary vasculature was cut at the level of the lower lobe branches. Antegrade followed by retrograde pulmonary arterial flushing was performed on a back table. The donor graft was then divided into superior and basal segments by cutting the pulmonary artery, vein, and bronchus.

In each case, the superior and basal segments were transplanted into the recipient's left and right chest cavities, respectively. The superior segment was transplanted without changing its direction, and the segmental vein was anastomosed to the recipient's lower pulmonary vein. The basal segments were rotated 180 degrees horizontally and 90 degrees vertically, and then the segmental vein was attached to the recipient's upper pulmonary vein. Two patients required delayed chest closure due to size mismatch between the graft and the recipient's chest cavity (Table 1). The chest X-rays in acute and chronic phase are shown in Figure 1. Two patients recovered without requiring oxygen inhalation; however, 1 patient died due to legionellosis at 3 months after transplantation. The pulmonary arterial pressure of patient 2 gradually increased

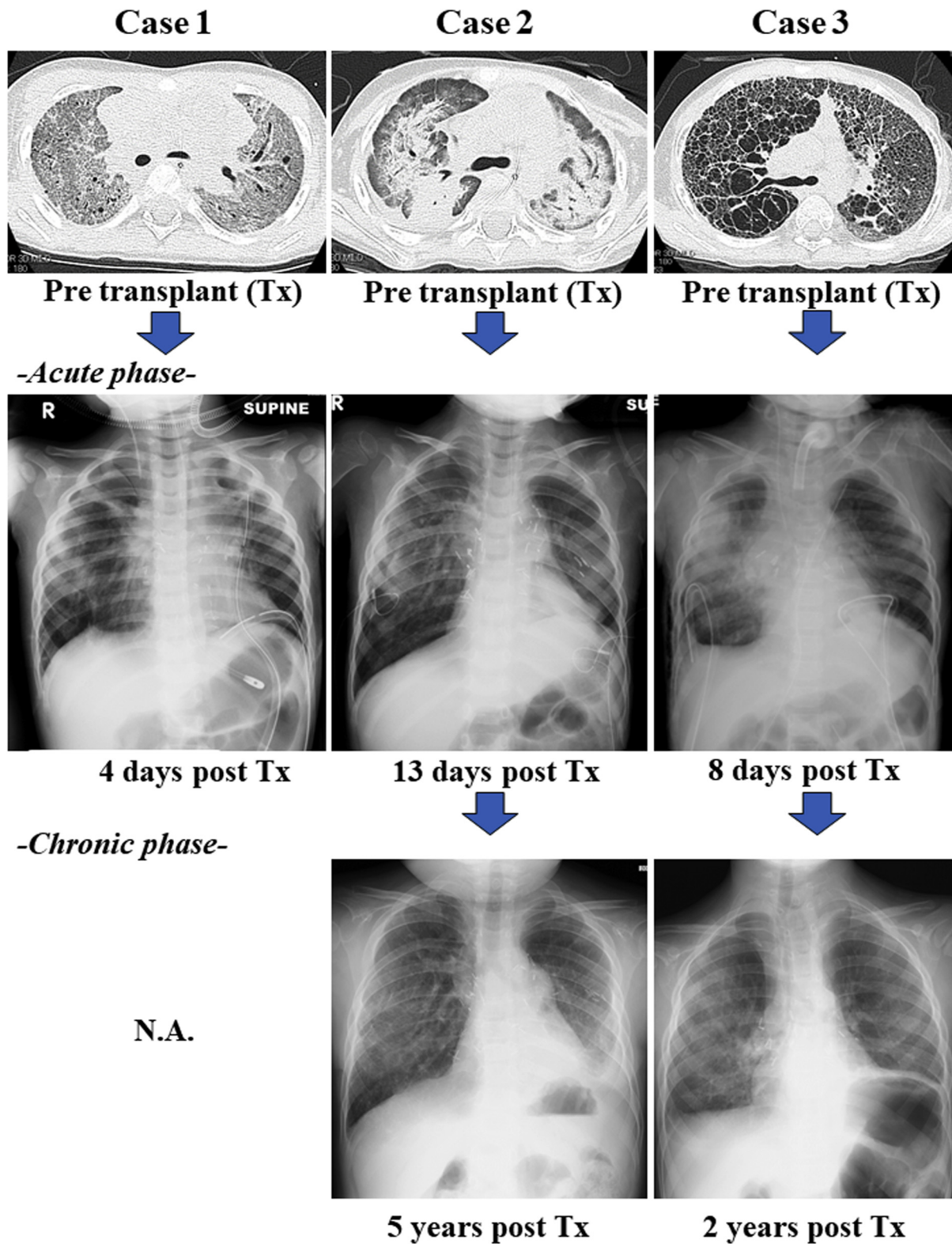


FIGURE 1. Acute and chronic phases of computed tomography scan and chest X-ray. Tx, Transplant; N.A., not applicable.

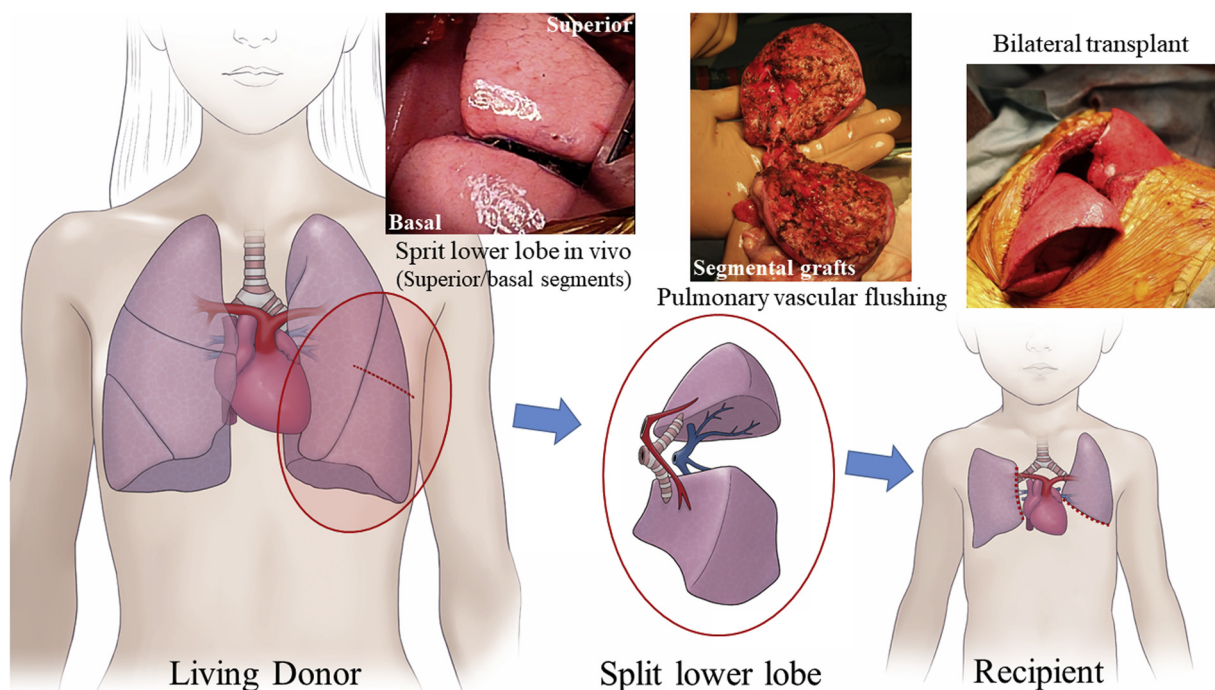
**TABLE 1. Characteristics of recipients and donors and outcomes of segmental transplant**

Characteristic	Patient 1	Patient 2	Patient 3
Recipient age, y	1	2	4
Height/weight	79 cm/10 kg	92 cm/12 kg	79 cm/8.8 kg
Preoperative pathology	NA	NSIP with DAD	UIP
Genetic abnormality	SFTPC <sup>L73T</sup> hetero	No	No
Donor	Mother	Mother	Father
Donor genetic abnormality	No	NA	NA
Donor graft	Right lower lobe	Left lower lobe	Right lower lobe
Graft implanted	Right: basal/left: superior	Right: basal/left: superior	Right: basal/left: superior
Donor/recipient size matching by CT volumetry, %	213.5	200.6	188.6
Immunosuppression	Tac + MMF + steroid	Tac + MMF + steroid	Tac + MMF + steroid
Extubation, d	4	13	8*
Follow-up period, mo	3	68	29
Growth of patient, cm	NA	105.8 (+13.8)	80.5 (+1.5)
Current status	Died	Alive	Alive
Cause of death	Legionellosis	NA	NA

NA, Not applicable; NSIP, non-specific interstitial pneumonia; DAD, diffuse alveolar damage; UIP, usual interstitial pneumonia; SFTPC, surfactant protein C; CT, computed tomography; Tac, tacrolimus; MMF, mycophenolate mofetil. \*Patient weaned from mechanical ventilation 8 days after transplantation and retained spontaneous breathing through a tracheostomy created during the preoperative period.

(right, 64/35/46/14 mm Hg; left, 77/38/52/16 mm Hg; systolic/diastolic/mean/mean pulmonary capillary wedge pressure, respectively) with a normal cardiac index

(4.17), pulmonary vascular resistance (8.82 mm Hg/L/min), left ventricular end-diastolic pressure (15 mm Hg), and mean aortic pressure (56 mm Hg), 68 months after



**FIGURE 2.** The donor's lower lobe was split into 2 segmental grafts in vivo, and graft preservation, including cold flushing, was performed ex vivo. The divided basal segments were rotated at 180 degrees vertically and 90 degrees horizontally and then placed into the recipient's right chest cavity. The recipient's left lower and right upper pulmonary veins were used for venous anastomosis.



**VIDEO 1.** Donor and recipient operations. Video available at: [https://www.jtcvs.org/article/S2666-2507\(20\)30300-X/fulltext](https://www.jtcvs.org/article/S2666-2507(20)30300-X/fulltext).

transplantation. Therefore, the patient is now being considered for a retransplantation.

## DISCUSSION

A previous report described living-donor middle lobe transplantation in toddlers, stating that the “middle lobe should have single arterial, venous, and bronchial branches; otherwise, the requirement for a patch repair might increase the potential surgical risks of the donor operation.”<sup>4</sup> In the 3 current cases, middle lobe transplants were considered; however, anatomic problems, including 2 middle lobe arteries, were discovered in 2 donors, and 2 middle lobe veins were discovered in 1 donor during the evaluation process. We consider a size mismatch between the pediatric recipient’s chest cavity and the adult donor graft of <250% to

be acceptable in a bilateral transplantation<sup>2,4,5</sup>; however, the indication may change depending on the stiffness of the recipient’s chest.

Although urgent transplantation using an adult living donor is possible, the patient is not likely to survive until a pediatric brain-dead donor is allocated. Bilateral transplantation is possible using a living-donor lower lobe.

The procedure does have some limitations. Retransplantation may be required in the near future as the recipient grows. In addition, a segmental graft carries a greater risk of bleeding and air leak compared with a whole lung or lobe.

Our experience with these cases demonstrates that bilateral segmental lung transplantation using a split adult living-donor lower lobe could bridge these children to suitable pediatric brain-dead transplants.

## References

1. Sato M, Okada Y, Oto T, Minami M, Shiraishi T, Nagayasu T, et al. Registry of the Japanese Society of Lung and Heart-Lung Transplantation: official Japanese lung transplantation report, 2014. *Gen Thorac Cardiovasc Surg.* 2014;62:594-601.
2. Oto T. Living donor lobar lung transplantation. Kirklín J, ISHLT monograph series, Pediatric Lung Transplantation. Volume 7, Birmingham, AL: University of Alabama at Birmingham Printing; 2013:220-7.
3. The Japanese Society of Lung and Heart-Lung Transplantation. Registry Report of Japanese Lung Transplantation -2019. *Jpn J Transplant.* 2019; 54:105-10.
4. Oto T, Miyoshi K, Sugimoto S, Yamane M. Living related donor middle lobe lung transplant in a pediatric patient. *J Thorac Cardiovasc Surg.* 2015;149:42-4.
5. Oto T, Date H, Hayama M, Ando A, Shimizu N. Peripheral lung volume reduction improved early graft function in severe size mismatched living donor lobar lung transplantation. *Transplant Proc.* 2005;37:4515-21.