

1 **Fire as a selective agent for both serotiny and nonserotiny over**
2 **space and time**

3
4 Byron B. Lamont^{1*}, Juli G. Pausas², Tianhua He^{1,3}, Ed T.F. Witkowski⁴ and Mick E.
5 Hanley⁵

6
7 ¹*Ecology Section, School of Molecular and Life Sciences, Curtin University, Perth, WA 6845,*
8 *Australia*

9 ²*Centro de Investigaciones sobre Desertificación (CIDE-CSIC), 46113 Montcada, Valencia, Spain*

10 ³*College of Science, Health, Engineering and Education, Murdoch University, Murdoch, WA,*
11 *Australia*

12 ⁴*School of Animal, Plant and Environmental Sciences, University of the Witwatersrand,*
13 *Johannesburg, South Africa*

14 ⁵*School of Biological and Marine Sciences, University of Plymouth, Drake Circus, Plymouth PL4*
15 *8AA, United Kingdom*

16
17
18 *Correspondence: B.Lamont@Curtin.edu.au

19
20
21
22
23 Running head: Fire and serotiny

24 *Abstract.* Serotiny is the prolonged storage of seeds in closed supporting structures retained within
25 the plant crown. The list of known serotinous species in fireprone regions of Australia, South Africa,
26 Mediterranean Basin, North America and Asia now stands at 1345, many of which dominate their
27 ecosystems. Length of storage varies from a few years (weak serotiny) to more than 10 years (strong
28 serotiny). Serotiny is the storage part of a reproductive syndrome that includes rapid seed release in
29 response to an environmental cue, usually fire. Strong serotiny is promoted when recruitment of
30 postfire seedlings is favoured over interfire seedlings with the net effect that the ‘gene support for
31 serotiny’ builds up rapidly in successive generations. Nonserotiny is favored when interfire seedlings
32 are more likely to survive either because the habitat is non-fireprone or because fire may occur
33 annually but adult plants survive. Propensity for serotiny shows remarkable trait diversity within
34 clades, some covering the full range of possible fire-regimes (*Pinus*, *Protea*, *Banksia*, *Hakea*). Co-
35 occurring congeners may possess contrasting levels of serotiny under moderately frequent, intense
36 fires. We list 23 traits associated with the serotiny/nonserotiny syndromes that are subject to both
37 environmental and phylogenetic constraints; all are coordinated for maximum fitness but a trade-off
38 between serotiny and resprouting is not apparent. Some traits are only indirectly related to selection by
39 fire, such as protection from granivores, that may interact with the fire regime. Both serotiny and
40 nonserotiny have a long history among woody plants that can be traced from the Triassic, escalating in
41 the Cenozoic and peaking over the last 5 million years. A marked drop in serotinous-lineage
42 proliferation occurred in the cold 40–30-million-year period. Some species in all clades have returned
43 to the nonserotinous state of their ancestors as fire frequency has either increased markedly or they
44 migrated to fire-free habitats. Progress on determining the heritability of serotiny could be enhanced
45 by using temporally based measures of serotiny. The (epi)genetic/morphological/physiological basis
46 for early or late release of seeds from cones/fruits remains unknown. Anthropogenic influences are
47 having a profound effect on the conservation status and evolutionary trajectory of serotinous species.

48
49 *Key words:* *Banksia*, *canopy seed storage*, *fire ecology*, *flammability*, *Hakea*, *interfire*, *mediterranean*,
50 *Pinus*, *postfire recruitment*, *Protea*, *resprouters*, *savanna*, *seedlings*, *seed storage*, *woody fruits*

51
52

53 SEROTINY VS NONSEROTINY

54
55 Serotiny refers to prolonged on-plant storage of seeds and is part of a major reproductive syndrome
56 among woody plants (Box 1) that can be distinguished from seed release at maturity (nonserotiny) and
57 soil storage (geospory). The ecology and evolution of serotiny has been widely studied in North
58 America, Mediterranean Basin, Australia and South Africa where it is recognized as a key adaptive
59 trait to fire (Lamont and Enright, 2000; Keeley et al., 2011; Treunicht et al., 2016) with an
60 evolutionary history that extends back to the Triassic (He et al., 2016a; Lamont, He and Yan, 2019a).
61 The adaptive advantages of serotiny among woody plants center on its ability to increase seed
62 availability above the minimum required for postfire population recovery (Enright et al., 1998a). The
63 relative benefits of different levels of serotiny revolve around the opportunities for interfire
64 recruitment compared with postfire recruitment (Cowling and Lamont, 1985a; Enright et al., 1998a).
65 Adaptive changes in the level of serotiny are expected when a) a species attempts to invade an area
66 whose fire regime is different from the current one, or b) the fire regime changes in its native habitat

67 (Ne'eman, Goubitz and Nathan, 2004; Lamont, He and Downes, 2013). Thus, nonserotiny can be
68 expected in non-fireprone habitats where postfire germination is not an option (Lamont, He and Yan,
69 2019b). Less well-known is the fact that high fire frequency may also induce nonserotiny, or more
70 generally, nonstorage (Buma et al., 2013; Lamont, He and Pausas, 2017a). When fire is likely in most
71 years, as in (sub)tropical savannas, there is little opportunity for, nor benefit in, the accumulation of
72 seeds, and, in fact, flames may not reach the crown of trees anyway. Thus, the extremes of fire
73 frequency both promote nonserotiny, and the processes responsible are discussed here.

74 The purpose of this review is to explore the environmental factors associated with fire (or its
75 absence) that promote or inhibit the evolution of serotiny spatially (different fire regimes and growing
76 conditions), at different levels of organization (within and between populations, species, genera and
77 broader clades), and at different temporal scales [currently (microevolution) and over geological time
78 (macroevolution)]. We begin by describing the serotinous structures that protect their stored seeds and
79 their taxonomic and geographic distribution. Consideration of the syndrome of traits associated with
80 on-plant seed storage, seed release and seedling recruitment follows. What is the genetic basis for
81 these fire-adapted traits? The relevant genes and alleles arise from somatic or meiotic mutations
82 (Benca, Duijnste and Looy, 2018; He and Lamont, 2018) and we assume that they already exist at
83 low frequencies among some genotypes. Prior adaptive responses to other survival hazards, such as
84 herbivory, seasonal drought or other disturbances/stresses (in this review, x/y means “x and/or y”) may
85 play some role but fire usually precedes them as a selective agent (Lamont, He and Yan, 2019b). We
86 concentrate on the selection process because little is known about the initiation of genetic mutations
87 while the role of fire as a selective agent is well established (Castellanos et al., 2015). Next considered
88 are impact of the population dynamics of interfire and postfire recruitment and phenotypic selection,
89 followed by the possible genetic mechanisms that increase or decrease the gene ‘support’ for
90 serotinous traits. We then review actual examples of the outcome of the selection processes described
91 above, first at the intraspecific scale and then at the interspecific, intrageneric and intracladal scales.
92 These highlight different responses between populations and taxa to different constraints, and different
93 responses to the same constraints by different taxa. We then document changes in the occurrence of
94 serotiny and nonserotiny through geological time. Issues for conservation and priorities for future
95 research are noted at the end.

96 97 MORPHOLOGY, TAXONOMY AND DISTRIBUTION OF SEROTINOUS STRUCTURES

98 (Figs. 1, 2)

99 There is a great diversity of serotinous structures (Fig. 1) among the 1345 species, distributed across
100 55 genera in 12 families (Fig. 2), documented in this review. All seed-bearing structures, but two
101 types with fleshy sepals, are dry and variously woody, and all are dehiscent at the level of the cone
102 (that releases seeds or indehiscent fruits) or fruit (that releases seeds) (Table S1). The data for species
103 yet to be examined indicate that the total listed here is a little more than half of the likely total number
104 (~2500). Seven genera are currently recorded with ≥ 50 serotinous species (*Eucalyptus* to *Callistemon*
105 in Fig. 2). Within serotinous genera, 21 (38%) also contain nonserotinous species, especially among
106 the largest genera, while 53% are solely serotinous. Regionally, 87.5% of records are for Australia
107 (taking into account estimated underestimates of the numbers in Eastern Australia), with 75% of these
108 in SW Australia (that occupies 4% area of the continent). South Africa accounts for 10.5% of species,
109 with 1.5% in North America and 0.5% in the Mediterranean Basin, and two species in Asia (*Pinus*

110 *yunnanensis*, *Larix gemilini*). Regarding serotinous structures, 43% are isolated or loosely clustered
111 fruits (terminal), 30% are cones (terminal) with indehiscent fruits, 25% are aggregated fruits (axillary,
112 except for *Syncarpia*) and 4% are cones with seeds (terminal), all pictured in Fig. 1 and described in
113 Table S1. Homology exists within the fruit type (follicle, capsule, achene) and within conflorescence
114 type (solitary, umbel, capitulum, cyme) but not between them (homoplasy). Pinaceae, Casuarinaceae
115 and the two major subfamilies of Proteaceae (Proteoideae, *Banksia* in Grevilleoideae) have quite
116 different cone types structurally. The first stores naked seeds supported by fused scales (bracteoles),
117 the second has fruits immersed between two woody scales, the Proteoideae has one woody scale
118 pressing the fruit against the rachis, whereas *Banksia* has protruding fruits immersed in a mantle of
119 fibrous bracts per two florets each with its own fibrous bracteole (George 1981). As for the dispersal
120 units, 70% are air buoyant with 51% having winged seeds, 19% with winged, hairy or otherwise
121 buoyant fruits, 29% with small (< 2 mm long), wingless seeds, and 1.5% with wingless fruits
122 (*Leucadendron*). All these structures appear to have evolved independently although subjected to the
123 same forces of selection (discussed later).
124

125 TRAITS THAT CONTROL SEROTINY, SEED RELEASE AND RECRUITMENT

126 (Fig. 3, Table 1)

127 If we are to consider fire as a selective agent for the evolution of serotiny/pyriscence or their reverse,
128 then we need to know on what traits fire must act for adaptive change to occur. The first three of six
129 stages are common to plants in general (Fig. 3). Species possess a syndrome of traits that are adapted
130 to three constraint dimensions – the prevailing abiotic environment (climate, soils, topography), the
131 prevailing biotic environment (pollinators, herbivores, granivores, pathogens, dispersers) and
132 disturbance, principally fire (Pausas and Lamont, 2018; Lamont, He and Yan, 2019b). Thus, the pre-
133 existence of adaptations (genetically based traits selected for over time) to the abiotic and biotic
134 environments and fire regime occupied are prerequisites. Serotiny (*vs* nonserotiny) are the initial
135 components of two reproductive syndromes that consist of a) build up of an aerial seed bank (*vs*
136 release at maturity), b) release of seeds in response to fire heat (*vs* release in the absence of fire), and
137 c) germination and recruitment of seedlings *en masse* postfire (*vs* continuous recruitment in the
138 absence of fire) (Fig. 3). Analysis of one component without reference to the other two will underplay
139 the ecological significance of serotiny. Thus, prolonged storage traits are promoted in an ultimate
140 sense because a) annual seed production is inadequate for self-replacement should a fire occur in that
141 year, b) optimal recruitment conditions only exist immediately post release as a result of fire, and c)
142 seeds released interfire are no longer available to contribute to the next generation (Lamont et al.,
143 1991; Enright et al., 1998a,b). On-plant storage also gives extra time for seed mass and nutrient
144 content to build up, of particular value for seedling recruitment in nutrient-impooverished, seasonally
145 dry soils where the incidence of serotiny reaches its peak abundance (Lamont and Groom, 2013) so is
146 related to point (a) above. This solution to the need for nutrient-enriched seeds would still not favor
147 selection for serotiny were it not tied to fire-stimulated seed release under superior conditions for
148 recruitment afforded by the postfire habitat.

149 We now discuss 23 traits identified from the literature and associated with these three
150 components that are under genetic control and environmental selection, tempered by phylogenetic
151 constraints (Table 1). Several processes are related directly to storage: propensity to produce enclosure
152 sealants, a vascular system that prevents premature drying out of the storage tissues, and seed viability

153 that matches the length of storage. Equally, for non-storage, an efficient abscission mechanism is
154 required that may involve rapid occlusion of the xylem once maturity is reached (Moya et al. 2008).
155 Effective serotiny entails a) protection of seeds from the ‘elements’ over some years in the absence of
156 fire and b) corresponding survival of the protected seeds. However, the supporting structures
157 invariably stay closed for longer than their seeds remain viable. Thus, 85% of 10–12-year-old follicles
158 and seeds of *Banksia cuneata* remain intact, but seed viability is < 35% compared with 85% for one-y-
159 old cones (Lamont, Connell and Bergl, 1991). Death of embryos can be due to postzygotic-acting
160 deleterious alleles, consumption by insect larvae, granivorous birds or rodents, the action of
161 pathogenic fungi or bacteria, desiccation, waterlogging or gradual senescence. Some pine cones have
162 tough, spiny apophyses apparently directed at squirrels or corvids (Elliott, 1974; Benkman et al., 2003;
163 Siepielski and Benkman, 2004); some banksias have a dense mantle of persistent florets that not only
164 increase flammability and ensure seed release (Enright and Lamont, 1989) but also serve to conceal
165 the fruits from granivores; some hakeas have elaborate woody rims over the thinnest, weakest part of
166 the fruit (suture line) deterring granivores, especially cockatoos and ovipositing insects, from reaching
167 the seeds (Midgley, Cowling and Lamont, 1991; Groom and Lamont, 2015; Fig. 3). All these
168 protective mechanisms will have different genetic bases that vary greatly between different plant taxa.

169 As seed release is essentially a desiccation phenomenon, any drying out of the seed-supporting
170 structures can lead to seed release (dos Santos et al., 2015). Only fire heat causes *en masse* release at
171 the population scale, known as pyriscence (Lamont, 1991). Interfire dehiscence can be the result of
172 plant death or local necrosis of the supporting branches or even of individual fruits or cones
173 (necriscence), usually through failure of the vascular system to maintain water supply to the maternal
174 tissues (Cramer and Midgley, 2009). Direct insolation (soliscence), hot weather and dry air
175 (desiscence – after desiccation, Lamont 1991, Nathan et al., 1999) can also lead to weakening of the
176 binding resins and desiccation, while these effects can occur simply with the passage of time. Weakly
177 serotinous cones/fruits open at lower temperatures than strongly serotinous structures (Enright and
178 Lamont, 1989; Huss et al., 2018) so that they are more likely to release their seeds between fires.

179 That serotiny is usually terminated by fire heat has implications for the selection of a number
180 of traits (Table 1). Paramount is insulation of seeds from fire heat that requires the genetic propensity
181 to synthesise non-flammable, woody/corky tissues. As it turns out, many species are ‘overadapted’ for
182 fire resistance as protection from granivores requires even thicker and denser tissues. Further, seeds of
183 many species have high heat tolerances (up to 170°C for 2 min), equivalent to those of soil-stored,
184 ‘hard’ seeds, while the germination of some others is optimized by temperature pretreatments not
185 expected in the absence of fire (60–80°C), showing that fire has acted as a selective agent even at the
186 pre-release stage. Nevertheless, old, partly open cones (Lamont and Barker, 1988) or dry cones/fruits
187 on dead plants (Lamont and Groom, 1998) are more likely to be incinerated even where viable seeds
188 remain stored on dead branches or plants. Thus, some traits are directed at storage as an end in itself
189 unrelated to the inevitability of fire events, some protect against heat as well as granivores
190 (multifunctional), while others control the heat-induced, seed-release mechanism. All of these will be
191 under separate genetic control.

192 The cueing of seed release by fire involves a complex mechanism, which must be controlled
193 by numerous genes and alleles, that may include a) the presence and melting of binding resins at the
194 suture line, then b) the presence of specialized tissues that cause reflexing of the enclosures as they

195 desiccate, sometimes aided by wet-dry cycles. The mechanism is particularly elaborate among
196 banksias and dryandras where a winged central plate gradually pulls the two seeds out of the follicle –
197 it seems that this ‘separator’ also serves to deter granivorous birds, which descend on the cones as
198 soon as the fire passes, from accessing the seeds (Cowling and Lamont, 1987). If this is the result of
199 selection then its current morphology must be relatively recent as cockatoos only arose ~20 Ma
200 whereas this clade emerged > 60 Ma (He, Lamont and Downes, 2011). At about the same time, other
201 traits arose that enhance the flammability of the region around the cones/fruits and ensure the critical
202 temperature for resin melting is reached – retention of dead florets, leaves and twigs. Serotiny in pines
203 is tied to retention of dead branches that enable propagation of flames from the ground to the crown
204 (the ‘ladder’ effect) where the closed cones are located (Schwilk and Ackerly, 2001; Pausas, 2015).

205 Where nonserotiny is beneficial, all that is required in the absence of fire is an efficient
206 dehiscence mechanism of the cones/fruits that is cued once they reach maturity. Note that nonserotiny
207 does not necessarily imply absence of fire adaptations. For example, it is coupled with thick bark
208 (trees, Pausas, 2015) and/or resprouting (shrubs – subshrub geoxyles) among plants in low vegetation
209 where fire is very frequent (savannas) (Lamont, He and Pausas, 2017a).

210 Selection will also occur at the seedling phase: young nonserotinous taxa should thrive
211 interfire, and serotinous taxa should thrive postfire (Table 1, Fig. 3). Selected traits linked to serotiny
212 include heat-stimulated germination, tolerance of high pH (ash), charates and soil/litter burial (as a
213 result of postfire shifting of seeds and debris by wind and rain), high light and intra/inter-specific-
214 competition tolerance (Table 1). Weakly or nonserotinous taxa display the reverse traits. Rarely, the
215 germination of seeds of some species is promoted by smoke (Brown and Botha 2004) that coincides
216 with the postfire environment, though it is usually confined to soil-stored seeds. The abundance of
217 postfire litter microsites packed with seeds and seedlings is a two-edged sword: they both attract and
218 satiate granivores and herbivores so that the effect on net recruitment needs to be considered.
219 Nevertheless, recruitment in the burnt sites always exceeds that in the unburnt (Cowling and Lamont,
220 1987; Hanley and Lamont, 2000; Causley et al., 2016). Many serotinous seeds are black, brown,
221 mottled or pale that implies a mimicry function against the postfire ash and/or charcoal-filled litter
222 beds (Fig. 1H). Postfire released seeds can merge with the soil surface background to potentially deter
223 vertebrate granivores from consuming the seeds (Saracino, D’Alessandro and Borghetti, 2004; Lev-
224 Yadun and Ne’eman, 2013; Midgley et al., in press). To what extent these colours and patterns differ
225 from nonserotinous seeds in the same taxon (Lev-Yadun and Ne’eman, 2013) or in different taxa, or
226 are more effective at reducing granivory, awaits detailed study.

227

228 GENETIC ASPECTS

229 *Genetic control of serotiny*

230 (Figs. S1, 4)

231 There are two issues to consider in understanding the genetic basis for serotiny: a) that it is a
232 heritable trait (or syndrome of traits), and b) how the selection process works at the gene level. There
233 is much interest in the heritability (versus environmental control) of serotiny with the results so far
234 varying from strongly to weakly heritable (Parchman et al., 2012; Budde et al., 2014; Vincenzi and
235 Piotti, 2014; Castellanos, González-Martínez and Pausas, 2015; Feduck et al., 2015). Part of the
236 explanation for the variable results is that serotiny is gauged in most of these studies as the
237 percentage of cones that are closed, which clearly has an age/size/growing-condition component.

238 Thus, younger/faster-growing plants will have a greater fraction of young cones and register a higher
239 level of serotiny unrelated to its genetic basis. Equally, old plants may predominantly possess open
240 fruits/cones and thus their serotiny level is underestimated. This problem is overcome by using the
241 slope measure of serotiny that is unaffected by annual crop size and ignores years once they are fully
242 open (Cowling and Lamont, 1985a) – this distinguishes the ‘apparent’ level of serotiny (the fraction
243 of cones/fruits that is closed) from the ‘true’ level of serotiny (the rate at which cones/fruits open).

244 Common-garden trials are an alternative approach with much to commend them as they
245 dispense with confounding due to environmental effects (though the more common-garden locations
246 used the better). Harris (2002) assessed the current crop of capsules in 2.5-y-old shrubs of
247 *Leptospermum scoparium* (Myrtaceae), grown in an experimental garden at Canterbury, New
248 Zealand, that had split to release their seeds. Populations varied in the level of splitting on a
249 proportionate score by up to ten times, confirming that serotiny has a strong genetic basis and
250 implying rapid adaptive responses to different fire regimes within a species. Heritability could not be
251 determined as within-population variability was not assessed. Ideally, the assessment would be
252 applied over a number of years in such trials to reduce seasonal variability effects.

253 The best study to date is that of Hernández-Serrano et al. (2014) that showed a 17 times
254 difference in closed to total cones for 29 provenances of *Pinus halepensis*. This could be related to
255 the level of summer drought as a surrogate for fire intensity (likelihood of fire reaching crowns of the
256 trees). Care was taken to omit the youngest cones as these are immature while the trees were at an
257 active stage of growth having produced cones for 10–14 y. Since cones can remain closed for 15 y
258 the problem of fully open crops was avoided. Heritability (h^2) was moderate at 0.20. Since total or
259 annual cone production were not used as covariates, the possibility that differences among these
260 attributes accounted for some of the variation in serotiny remains. Using single nucleotide
261 polymorphisms (SNP) markers for estimating relatedness among individuals in wild populations of
262 this species, Castellanos et al. (2015) obtained a lower h^2 of 0.10, which confirms that this measure of
263 serotiny responds to both environmental and genetic effects.

264 Further support for the strong genetic basis of serotiny has come from a genome-wide
265 association studies for the variably serotinous shrub/tree, *Banksia attenuata*. Among the 382,287
266 genome-wide single nucleotide polymorphisms SNPs obtained, 220 were associated with the level of
267 serotiny ($p < 0.010$, corrected for multiple tests) (Fig. S1), possibly representing 20–30 genes. It is
268 not clear what genes are involved in controlling serotiny in *B. attenuata*, as the *Banksia* reference
269 genome has not yet been annotated. The detection of such a large number of SNPs associated with
270 serotiny indicates that on-plant seed storage is genetically controlled, and therefore strongly heritable
271 in this species.

272 Individual trees of some *Pinus* species may be serotinous or nonserotinous (Teich, 1970,
273 Givnish, 1981; Talluto and Benkman, 2013) indicating that this trait may be under simple Mendelian
274 control. However, for the great majority of serotinous species, including most pines, serotiny is a
275 question of degree, depending on thickness and density of the protective tissues, constitution of the
276 binding resins, and the like (Fig. 1). This implies many genes control the different traits described
277 above and many alleles for the same trait (Budde et al., 2014; Parchman et al., 2012; Hernández-
278 Serrano et al., 2014). The effects will be additive or synergistic, including heterosis and epistasis. As
279 alleles controlling serotiny/pyriscence (seed store and the fire cue for seed release) accumulate, so

280 serotiny will strengthen and seed release will increasingly be tied to fire events. A consideration of
281 how these two options become expressed through successive generations now follows using worked
282 examples:

283 1. *One gene control of serotiny*. If A is the new dominant allele for serotiny and the plants are self-
284 compatible then 50% of seeds produced will be phenotypically serotinous. If aa (nonserotinous) are
285 the only ones released interfire (Hernández-Serrano et al., 2013, 2014) and these perish as recruitment
286 or maturation are now only possible if seeds germinate postfire, then 75% of seeds produced by the
287 replacement population will be serotinous. Similarly, 88.9% of seeds produced in the next postfire
288 generation will be serotinous (AA:2Aa × AA:2Aa). By the next generation, it will be 97.5% of seeds.
289 Note that aa is never completely lost and can enable the population to recover nonserotiny if interfire
290 recruitment or weak serotiny become favored. While current research indicates that this simple
291 mechanism is unlikely since serotiny/pyriscence clearly involve multiple, coordinated
292 traits, the same principle of progressive dilution of certain alleles via selection can be applied to
293 multigene, quantitative allelic systems.

294 2. *Multiple gene control of serotiny*. To illustrate likely outcomes when serotiny is favoured, we
295 estimated annual seed production, release and viability of retained seeds for a representative tree or
296 shrub over 10 y since it reached maturity based on empirical trends for banksias (Lamont et al., 1994a;
297 Lamont and Enright, 2000). The level of serotiny is controlled by the type of alleles present at a
298 number of gene loci that we refer to as the ‘gene support for serotiny’, S, representing the fraction of
299 the genome devoted to supporting serotiny that is ‘saturated’ (Fig. 4). Two initial gene supports for
300 serotiny were used, 0.3 (30% of genes for serotiny are in a homozygous state) and 0.5. Two degrees of
301 serotiny were used, 4.0 (seeds held for up to 4 y) and 12.0 (seeds held for up to 12 y), based on $100/b$
302 where b is the linear slope of fraction of seeds retained or fruits/cones closed per year (Cowling and
303 Lamont 1985a, Lamont 1991). Progressive seed store, $H = \sum_i^x (\text{seeds produced} \times \text{fraction of seeds}$
304 $\text{retained} \times \text{viability})$ where x is the number of years prior to, but including, the current year, and
305 progressive total gene support, $G = \sum_i^x (\text{seeds produced} \times S \times \text{viability})$. It is assumed that seeds
306 released are genetically nonserotinous (Hernández-Serrano et al. 2013, 2014) so that G gets
307 reallocated to the retained seeds. The exceptions are when the fraction of seeds retained (R) is less
308 than S when the genetic support is reduced to the value of R as some of S would have been lost in the
309 released seeds. Mean S_x per seed = G/H over the nominated time period x . An example of the
310 procedure and outcomes is given in Table S2. The process was repeated for three successive postfire
311 generations burnt bearing a 10-y crop (strongly serotinous) to obtain new estimates of S_x .

312 Results show that serotinous phenotypes possess 4.5 to 6.2 times as many seeds as
313 the current season’s at the time of fire if retained for up to 10 y and 1.9 to 2.1 times as many if held for
314 up to 4 y, depending on whether seed production is increasing, decreasing or steady (Fig. 4). If
315 recruitment is a weighted lottery process (Lamont and Witkowski, 1995), then there would be 2.4 to
316 2.9 as many strongly serotinous recruits as weakly serotinous. Assuming that the seeds released
317 interfire are genetically nonserotinous (and fail to contribute to the next generation following fire),
318 then the gene support for serotiny gradually increases in the seeds retained so that S of the stored seeds
319 is greater than the current season’s crop (Table S2, Fig. 4). S increases per seed by 1.21 to 1.29
320 times for the strongly serotinous plants and 1.33 to 1.36 times for the weakly serotinous plants. The
321 reason that the weakly serotinous have a slightly higher S than the strongly serotinous is because the

322 greater rate of interfire seed release means that the seeds remaining are more likely to be
323 phenotypically serotinous, even though the rate among old seeds may be so high that even some
324 serotinous structures release their seeds. While this mean rate of increase does not appear high, it
325 escalates with each postfire generation so that only four generations are required for S to pass from 0.5
326 to 1.0 (when in theory the species is completely serotinous at least for that trait). Thus, once a
327 serotinous mutant appears and serotiny is adaptive, then that allele is rapidly incorporated into each
328 successive postfire generation. Here, selection essentially operates at the interfire stage, where already
329 released seeds are ‘wasted’, not at the postfire stage that ensures the phenotypes present, which are
330 increasingly serotinous, contribute to the new generation as a function of their contribution to the gene
331 support. The reverse arguments hold for environments where serotiny is nonadaptive, such as fire-free
332 habitats and frequently burnt savannas (Lamont, He and Yan, 2019b).

334 *Fire-induced selection for or against serotiny*

335 (Figs. 5, 6, 8, Table 2)

336 We assume from the outset that the fire return interval (FRI) exceeds the age to maturity. If the mean
337 FRI exceeds age to reach maturity then both seed set and serotiny are possible (Fig. 5A); if it is
338 otherwise (immaturity risk), then the species is non-viable under those conditions (it cannot reproduce)
339 and serotiny becomes irrelevant. Where the typical FRI is shorter than individual longevity, then
340 serotiny is a viable option; if it is the reverse (senescence risk), then interfire recruitment is the only
341 option, so that serotiny will not evolve. Thus, serotiny is promoted when fire is at moderate intervals
342 relative to the timing of life-history traits of a species (Fig. 5B), bearing in mind that nonsprouting
343 shrubs usually complete their life cycle within < 50 y and often < 15 y, conifers and resprouting
344 eucalypts may survive for >500 y, while clonal species may survive indefinitely (Lamont and Wiens,
345 2003). Where there are extreme FRI fluctuations about the mean in space or time, this may provide an
346 opportunity for resprouters to establish even though the mean FRI is less than their age to maturity;
347 these species will be nonserotinous. Within this time frame, whether serotiny or nonserotiny is
348 favoured depends on a) whether or not the species can release its seeds in response to fire, b) the ratio
349 of successful interfire to postfire recruits, and c) whether serotiny is required to build up the numbers
350 of seeds sufficiently to ensure population viability in response to fire.

351 Three scenarios (sets of conditions and population dynamics) can be identified that promote
352 strong or weak serotiny or the loss/absence of serotiny in the presence of fire (Table 2). These revolve
353 around fire frequency (mean and variability of fire intervals) compared with plant lifespan, and the
354 relative contribution of seeds released interfire vs postfire to the next generation (Fig. 5). The selection
355 process begins with the release of the less serotinous seeds interfire. The pattern of interfire seed
356 release can operate at three scales (Box 1): a) individuals within a population are not uniformly
357 serotinous, with some releasing their seeds early (Givnish, 1981; Gauthier et al., 1996; Hernández-
358 Serrano et al., 2013), b) the level of serotiny varies between whole cones or fruits within individual
359 plants such that some open early (Goubitz et al., 2003; Lovreglio et al., 2007), and c) individual seeds
360 are released at different rates within a given cone that collectively open at the same rate (Cowling and
361 Lamont, 1985). Whole-plant differences in level of serotiny have an obvious genetic basis
362 (Hernández-Serrano et al., 2014) and must constitute the dominant effect. Within-plant and within-
363 cone differences seem much less likely to have a genetic basis: somatic mutations are only a remote
364 possibility among old plants (Lamont and Wiens, 2003). Maternal control that might involve

365 recognition of the offspring genotype is possible, although this mechanism has received little direct
366 study (Hudson, Ayre and Ooi, 2015). Epigenetic effects that might be related to position or production
367 sequence aspects are also possible where late seed release might imply a more serotinous genotype via
368 epigenetic inheritance (Lind and Spagopoulou 2018). Altogether, the many findings that the postfire
369 population is more serotinous than the prefire population imply rapid genetic change between
370 generations (Goubitz et al., 2004; Raffaele et al., 2016), even though little is known about the genetic
371 mechanisms.

372 If recruitment conditions are poor through lack of vegetation gaps then these seeds are wasted
373 (Causley et al., 2016). If the recruits survive they will be depauperate, as they are poor competitors for
374 scarce resources, vulnerable to herbivores and often beneath adult plants, so rarely contribute seeds to
375 the next generation (Hanley and Lamont, 2001; Fig. 9). Besides, they will be younger than the parents
376 when fire does occur so that their seed store will be minimal or they may not even have reached
377 maturity by then. Strongly serotinous seeds are retained on the plant and are thus more likely survive
378 fire, and contribute more seeds to the next generation under the superior postfire recruitment and
379 growing conditions (Goubitz et al., 2003; Causley et al., 2016). Increased serotiny in the new stand is
380 thus due to the fact that a) seeds from less serotinous cones/fruits/individuals are released interfire so
381 are not available to establish in the postfire microsites, and b) seeds released postfire from the more
382 serotinous cones/fruits/individuals are more likely to lead to fecund recruits. Thus, the new cohort will
383 be more serotinous than its parents.

384 When fire is rare, most seeds in serotinous cones/fruits are retained by their parent plants so
385 that they will not be available to germinate interfire, whereas seeds released from nonserotinous
386 structures will be available to germinate (even if seedling recruitment is low). Selection may be
387 towards such traits as seeds that can penetrate litter, germinate quicker or have greater heat tolerances
388 that facilitate establishment in vegetation gaps or shade (Susko, and Lovett-Doust, 2000; Hanley and
389 Lamont, 2001; Calvo et al., 2016). These populations will trend towards weak serotiny. Where fire is
390 expected every 1–5 years among fire-tolerant resprouters (Fig. 5), there is little difference in
391 germination and recruitment conditions between years, and the optimum may even shift from postfire
392 to those years of, say, above average rainfall, independent of the fire event. Here, serotiny is
393 nonadaptive, and may even be maladaptive if it involves physiological and antigranivory costs
394 (Lamont and Enright, 2000; Cramer and Midgley, 2009; Tonnabel et al., 2012, Talluto and Benkman,
395 2013). Individuals that only release seeds postfire will be selected against while selection will be
396 towards seed release at maturity, rapid germination (no dormancy) and fast growth rates, including
397 rapid development of below-ground, bud-storing structures (Pausas et al., 2018). Thus, with ongoing
398 population turnover, strongly serotinous individuals are replaced by (genetically) nonserotinous
399 individuals. By understanding the fire regime, life-history traits and relative interfire/postfire
400 recruitment conditions, we can see how fire may select for either serotiny or nonserotiny under
401 different circumstances (Fig. 5).

402 These processes are modelled in Fig. 6 in terms of the contribution of interfire recruits to the
403 total population just before fire (from 0 to 100%). At 50%, there are as many interfire recruits as
404 postfire and there is no selection for or against serotiny (Fig. 5C). This might be viewed as the initial
405 state of the population. The level of serotiny is controlled by the type of alleles present at a number of
406 gene loci (gene support for serotiny) and at this point the support is moderate. The key step is the

407 fraction of interfire to total individuals. Essential are the presence of crown fire at low frequency (but
408 within the plant lifespan), superior recruitment conditions postfire, and the relevant genes and alleles
409 for on-plant seed storage, protection and fire-cued release (though not yet in a homozygous state). The
410 contribution of interfire recruits then falls and the gene support for serotiny escalates with each
411 successive generation. The rapidity of this change depends on the rate of generation turnover. The
412 converse involves the presence of frequent fires, fire tolerance or avoidance by the incumbent plants,
413 optimal recruitment conditions not necessarily immediately postfire, and the relevant genes and alleles
414 for seed release at maturity. The contribution of interfire recruits then increases and the gene support
415 for serotiny decelerates with each successive generation. Under opposing selection conditions, the
416 traits move in opposite directions as they gradually attain a homozygous condition until a new
417 equilibrium with the selective environment is reached or the gene support is saturated in the absence of
418 further beneficial mutations. Note that the changes in gene support did not need to involve further
419 beneficial mutations (though this would hasten the process) – it is essentially a case of phenotypic
420 selection.

421 Fig. 7 summarizes the sequence of steps and associated selective forces operating at each step
422 over the life cycle of a given species. Note how the traits listed in Table 1 are integrated here to
423 produce an adaptive reproductive syndrome centered on serotiny or nonserotiny. The cycle can be
424 repeated when interfire recruitment is favored and followed by strong interfire seed production and
425 release in the absence of fire that eventually leads to nonserotiny. Alternatively, seeds are released
426 both postfire and interfire and depending on the ratio of postfire/interfire success rate of individuals in
427 each phase so the trend is towards strong serotiny (high ratio) or weak serotiny (moderate ratio) or
428 nonserotiny (low ratio). With each cycle, the genetic support for serotiny or nonserotiny and
429 associated traits build up (Fig. 6) until an equilibrium is reached for those particular growing
430 conditions and fire regime, where the relevant loci are in a homozygous condition and no further
431 mutants are available for genetic change and fixation. The rate of change depends on the alleles
432 available for fixation and the rate of generation turnover. Thus, Ne'eman, Goubitz and Nathan (2004)
433 argued that, even if fires were rare prior to occupation of the Mediterranean Basin by modern humans
434 6,000 y ago, this was more than enough time for *Pinus halepensis*, at 125-y life cycles, to develop the
435 fire adaptive traits, such as moderate serotiny, that it displays today.

436 The extra protection associated with serotiny indicates that there may be physiological, and
437 thus ultimately fitness, 'costs' that need to be taken into account when assessing the level of serotiny
438 that eventuates from selection by fire (Lamont and Enright, 2000). These involve extra water,
439 carbohydrates and mineral nutrients but the increased demand has been shown to be minor or non-
440 limiting (Cramer and Midgley, 2009). More generally, the costs of alternative options, such as soil
441 storage, are unknown, the supporting structures may be multifunctional, e.g., woody fruits can
442 photosynthesise when young and they are a source of mineral nutrients for the developing seeds
443 (Groom and Lamont, 2010) so that their net cost is unclear, and the identity of the limiting resource
444 that needs to be measured as a cost is unknown (Lamont et al., 2016a). One approach would be to
445 determine experimentally the number of seeds sacrificed to achieve a certain level of serotiny, since
446 increasing seed availability is the ultimate function of serotiny. This has only been undertaken at the
447 simulation modelling level so far (Enright et al., 1998a, Tonnabel et al., 2012). The apparent costs of
448 serotiny pale by comparison with the resources 'wasted' through failure of seeds released interfire to

449 contribute to the next generation or the gradual attrition of postfire individuals through adverse
450 growing conditions. Thus, it may take up to 200 fire-released seeds to replace a prefire adult *Banksia*
451 *hookeriana* at 15 years (Lamont, Marsula, Enright and Witkowski, 2001).

452 SPATIAL ASPECTS

453 *Intraspecific variation in serotiny*

454 (Table 3, Fig. 8)

455 We now consider actual examples of the outcome of the selection processes described above, first at
456 the intraspecific scale and then at the interspecific, intrageneric, intracladal and finally, global,
457 scales. Geographic location effects on intraspecific serotiny are highlighted in Table 3. Here, size of
458 two *Banksia* species varies greatly between mesic sites, where most trees are tall and open and often
459 escape ignition from ground fires, and xeric sites, where plants are shrubbier and dense and their
460 crowns are invariably burnt by all fires. Plants at the xeric sites produce and store many more seeds
461 and their degrees of serotiny are 50% greater. This is a genetic (ultimate) response resulting from a
462 long history of selection, consistent with the reduced likelihood of successful interfire recruitment in
463 the drier region and greater chance of fire-caused death of adults. In each region, when growing at
464 the edge of roadways, where water and nutrient availabilities are higher, their size and seed stores
465 are similarly greater than those deep in the undisturbed parts of the reserve. This is a physiological
466 (proximate) response without selection that results in more seeds available for recruitment in both
467 regions. However, serotiny levels (based on $100/b$) are unaffected by these differences in growing
468 conditions, attesting to the stability of the index and genetic basis of the level of serotiny there. Note
469 that seeds stored as a fraction of seeds produced are greater under the better growing conditions
470 because seed production is increasing at a faster rate such that younger (more serotinous) seeds
471 contribute more to the total crop. Similarly, two species of pine at the mesic and xeric extremes of
472 their climatic range have different levels of serotiny (Table 3). Here, age of the oldest closed cone is
473 used as the index, with serotiny at the warmer coastal sites subject to more frequent crown fires
474 twice that at the more elevated, cooler sites.

475 Biotic as well as abiotic interactions may affect the level of serotiny at the intraspecific
476 level. For example, the red squirrel, *Tamiasciurus hudsonicus*, impacts on the level of serotiny
477 among disparate stands of *Pinus contorta* subsp. *latifolia* (Fig. 8). The squirrels are most attracted to
478 serotinous cones as they are always available; they remove the cones and store them intact
479 preventing their seed release and dispersal in response to fire (Talluto and Benkman, 2013). Thus,
480 selection pressure is against the expression of serotiny and this pressure increases with greater
481 abundance of the squirrel. Relatively young trees are more likely to produce serotinous cones, so
482 that 50% of trees can be serotinous in the absence of this granivore but < 10% when it is abundant.
483 Old trees have little propensity to produce serotinous cones (or, alternatively, most of their cones
484 will have released their seeds) so that their inherent level of serotiny is low and squirrels have only a
485 minor impact on this level. Assuming that the genetic mechanism operates at the individual tree
486 scale (it requires trees recorded as nonserotinous did not in fact result from earlier removal of all
487 serotinous cones by squirrels), then there is support for an adaptive response by this pine towards
488 weaker serotiny and the early release of seeds, reducing the opportunities for hoarding and
489 consumption of seeds by this major granivore. Weak serotiny will be adaptive here as substantial
490

491 interfire recruitment is possible. Where it is not, then local extinction of heavily predated
492 populations becomes a risk.

493
494 *Interspecific variation in serotiny*

495 (Fig. 8, Table 4)

496 We have demonstrated site effects (differing fire regimes and levels of granivory) on selection for
497 serotiny within a species. The differential response of individual species to the same level of
498 selection is even more marked. Thus, the root-suckering *Banksia elegans*, whose follicles almost
499 never open even when removed from the parent plant (Lamont, 1988), co-occurs with the fire-killed
500 *B. prionotes* that forms a multi-aged woodland at Lake Indoon, SW Australia (>85 times difference
501 in degree of serotiny based on the slope index; Enright and Lamont, 1989). This involves inherent
502 disparities between spontaneous interfire seed release (both show complete follicle opening in the
503 presence of fire heat), and interfire recruitment patterns. Thus, weakly serotinous species show
504 almost annual recruitment [with the peak age classes varying markedly between species and sites
505 (Fig. 9), possibly representing differential responses to wetter and drier years, especially summer
506 rainfall (Enright and Lamont, 1992)]. This is a function of both the greater availability of seeds
507 annually compared with the strongly serotinous species and biological differences such as smaller
508 seeds able to penetrate the litter and greater drought tolerances (Hanley and Lamont, 2001). Even so,
509 interfire recruits remain subordinate to postfire recruits in this system and contribute few seeds to
510 the postfire generation that is compensated for by the fact that annual production by the postfire
511 plants is high. Weak serotiny is only an effective ‘bet-hedging’ strategy when some fires occur at
512 intervals exceeding the lifespan of the species (Enright et al., 1998a). Alternatively, some seeds can
513 deposit in unvegetated gaps through spatial heterogeneity of the plant cover that assists their
514 recruitment. This remains much more likely after fire (Lamont, Witkowski and Enright, 1993) as
515 most interfire seeds disperse around their parents and compete directly with them (personal
516 observations).

517 Various habitat-vegetation types dictate the fire frequency, fire type, interfire and postfire
518 recruitment opportunities and maximum plant lifespan that are possible (Table 2). Thus, particular
519 species are constrained to specific habitat types. When fire frequency is ranked from nil to high, the
520 level of serotiny increases to a maximum at low-moderate frequency and then diminishes. Different
521 species, often within the same genus, will only be adapted to a few, often just one, of these fire-
522 regime/environmental combinations, depending on their life-history traits (maturity age and plant
523 longevity, Fig. 5). Either the species responds genetically to all of these agents of selection or they are
524 excluded. Note how nil/weak serotiny can exist in contrasting habitat/fire classes, but that strong
525 serotiny is more environmentally constrained. It is remarkable that often there is sufficient genetic
526 diversity within a single clade for different congeners to occupy all five fire-frequency classes
527 recognized here, given sufficient time to adapt.

528
529 *Intracladal variation in serotiny*

530 (Table 5)

531 We have noted how serotiny may vary greatly within (Table 3, Fig. 8) and between (Table 4, Fig. 9)
532 species living in different fire-related habitats. We now consider how levels of serotiny are distributed
533 within five clades (where at least some of their members are serotinous) in relation to fire type and

534 whole-plant fire response (killed or survives). Is selection for serotiny always tied to fire type (no fire,
535 surface or crown fire) or coupled with the type of fire response? If serotiny is a fire-related
536 phenomenon, then, if the habitat is non-fireprone or only subject to ground fires (trees whose
537 reproductive structures cannot be reached by fire), then serotiny should be absent; and this is what we
538 find when we look at five key clades with serotinous species (Table 5). [That insufficient flame height
539 is not the full explanation is indicated by many subshrub geoxyles in grasslands whose crowns are
540 burnt every time there is a fire.] This is consistent with chronogram analyses that show the presence
541 of fire is a pre- or co-requisite for the evolution of serotiny (Lamont and He, 2017; Lamont, He and
542 Yan, 2019b). Serotiny will be confined to crown-fire habitats but not necessarily all species within a
543 clade as a) some have adequate annual production for self-replacement upon death should a fire occur,
544 or b) the probability of fire occurring between maturity age and longevity of the species is too small to
545 guarantee seed release by fire in that time (Enright et al., 1998a; Keeley and Zedler, 1998; Fig. 5).
546 Again, this is what we find (Table 5).

547 Since resprouters, and other fire-resilient species, do not rely on seeds for persistence in the
548 postfire stand, one might predict that serotiny is a relaxed condition in these species: this is not what
549 we find. In the long-term, fitness and genetic diversity of resprouters is just as dependent on seeds as
550 nonsprouters and their levels of serotiny may be similar (Enright et al., 1998b). This might be
551 exacerbated by their typically low annual seed set compared with nonsprouters (Lamont and Wiens,
552 2004; Pausas et al., 2004. Thus, selection tends to favor serotiny among resprouters almost as much as
553 among nonsprouters (Yate's χ^2 test for global figures: $P = 0.0344$ for hypothesis that nonsprouters >
554 resprouters, $P = 0.0688$ for hypothesis that there is no difference).

556 TEMPORAL ASPECTS

557 *Evolution of serotiny and nonserotiny among genera*

558 (Figs. 10, 11)

559 We now consider the evolutionary history of serotiny and nonserotiny among three well-studied
560 clades: *Hakea* (Australia), *Pinus* (Northern Hemisphere) and *Protea* (Africa). The onset of serotiny in
561 *Hakea* is associated with departure of the ancestral parent from rainforest into fire-prone sclerophyll
562 woodland, 18–20 million years ago (Ma) (Fig. 10). Diversification of moderately serotinous species
563 escalated in the mid-late Miocene, possibly associated with the advent of a mediterranean climate in
564 SW Australia (Lamont and He 2017) with its intense, moderately frequent, summer-autumn fires. The
565 appearance of much woodier and more strongly serotinous fruits 5 million years (My) after origin of
566 the clade can be attributed to selective pressure from the increasingly abundant granivorous black
567 cockatoos (*Calyptorhynchus*) (White et al., 2011) in the face of the increasing advantages of serotiny
568 for seedling recruitment as the climate became drier and more seasonal (Lamont et al., 2016a). Weak
569 serotiny originated at much the same time but diversified more slowly at first then escalated from 7
570 Ma with smaller fruits that tended to stay green, mimicking the leaves and branchlets and remained
571 embedded among the spiny leaves. This, in turn, was an adaptive consequence of the large fruits
572 arising from exposed, bird-pollinated flowers, such that mimicry and crypsis, available to insect-
573 pollinated flowers concealed within foliage, were not options (Hanley, Lamont and Armbruster, 2009).
574 Some lineages were successful at interfire recruitment (Hanley and Lamont, 2001) while others by
575 now had spread into sparse vegetation (arid or saline) or summer-rainfall savannas (Lamont et al.,
576 2016b) where flames were unlikely to reach the crown, both promoting weak/nonserotiny. The only

577 species to complete the evolutionary cycle by occupying non-fireprone rock outcrops and becoming
578 nonserotinous is *Hakea clavata* that arose about 6.5 Ma.

579 Serotiny arose in *Pinus* ~113 Ma from nonserotinous congeneric ancestors subject to surface
580 fires over the previous 25 My, and coincided with the advent of crown fires that could now reach the
581 cones and stimulate seed release (Fig. 11). Diversification of the serotinous lineage (subgenus *Pinus*)
582 did not occur until 50–45-Ma or else speciation was balanced by extinction up until then. As
583 diversification of non-fireprone, nonserotinous lineages escalated from the mid-Paleogene and into the
584 Neogene-Quaternary, peaking over the last 5 My, so too did the fireprone, serotinous lineages but at a
585 lower rate. Six species lost serotiny on entering fire-free habitats over the last 25 My. While a
586 nonserotinous lineage (subgenus *Strobus*) developed wingless seeds 50–45-Ma (Fig. 11),
587 diversification only began 30–25 Ma, increasing linearly at a low rate until the present associated with
588 dispersal by granivorous birds (Corvids) and squirrels. Since winged seeds are part of the serotinous
589 syndrome (He et al., 2016a), a return to serotiny remains possible for most of the currently non-
590 fireprone pines should the fire regime change, but this becomes less likely for these species as
591 wingless nutlets are now entrenched in their genome.

592 *Protea* was serotinous from the time of its separation from nonserotinous relatives 28 Ma in
593 the SW Cape of South Africa, and diversification escalated there from 20–15 Ma (Fig. 11) possibly
594 coinciding with the advent of a predominantly winter-rainfall climate and summer-autumn fires at
595 moderate intervals (Lamont and He, 2017). As the clade migrated north and east to the summer-
596 rainfall zone in the 15–10-My period, one lineage adopted both resprouting in response to fire and loss
597 of serotiny and could now enter this zone where it diversified strongly. Resprouting is required to
598 survive the frequent (often annual) winter-spring fires and serotiny is redundant or even maladaptive if
599 it involves a fitness cost. Thus, serotiny has gone in opposite directions in the same genus as
600 determined by the contrasting fire regimes in different regions. A general picture emerges among these
601 three clades of a) nonserotinous ancestors in non-fireprone habitats (or surface fires in the case of
602 pines), b) initiation and proliferation of serotiny with the introduction of crown fires, and c) loss of
603 serotiny with migration to (almost) fire-free habitats or greatly expanded summer-rainfall
604 grasslands/savannas with frequent fire, but diversifying at a much lower rate than the serotinous
605 lineages.

606
607 *Evolution of serotiny and nonserotiny among families*

608 (Figs. 12, 13)

609 Moving from the genus to family scale shows how serotinous and nonserotinous genera can
610 arise independently numerous times within the same parent clade (Fig. 12). Each of the ten
611 serotinous lineages in Proteaceae commences in a fireprone environment but not all fireprone
612 environments lead to serotiny. Soil storage (geospority) is diagnostic for 17 lineages that requires heat
613 or smoke to break dormancy. Why one fire-response type is selected for rather than the other is
614 unclear, but it must involve possible differences in the selective fire regime and postfire recruitment
615 conditions as well as phylogenetic constraints. One lineage (*Faurea*) lacks any storage and occurs in
616 savanna (highly fireprone) or rainforest (non-fireprone). In addition, the serotinous structures are
617 matched (same ontogeny) at the fruit level within each subfamily (homologous) but the fruit types are

618 quite different between subfamilies (analogous – homoplasious). Thus, the Proteoideae has
619 indehiscent achenes while the Grevilleoideae has dehiscent follicles.

620 Further, the infructescence types are non-homologous within each subfamily. Thus, *Protea* has
621 a capitulum plus an involucre of bracts that wrap around the entire head of fruits, while in *Aulax* and
622 *Petrophile* each fruit has its own scale attached to a rachis (multiple rachises in the case of *Aulax*).
623 Among the five fireprone, Grevilleoid lineages, *Banksia-Dryandra* alone has a compound fruit with
624 persistent bracteoles. In addition, its follicles rarely open on severance of the cone from its vascular
625 supply but the serotinous structures of all other lineages release their seeds when their vascular supply
626 ceases. Further, the various serotinous structures originate at quite different times (Lamont and He,
627 2012). Thus, the serotinous cones of *Aulax/Petrophile* arose at least 75 Ma while those of
628 *Leucadendron* appeared 50 Ma, assuming that the cones were serotinous then based on ancestral trait
629 assignment techniques (Lamont, He and Yan 2019a). *Banksia* was serotinous from its beginnings > 60
630 Ma while the serotinous follicles of *Hakea* can be dated to 20 Ma (although the node is set where it
631 separated from *Grevillea*, and the complex is at least 35 Ma so it may be older). The issue of the origin
632 of particular serotinous structures therefore cannot be separated from the reasons for the origin of
633 particular lineages in geological time that is steeped in their fire history (Lamont, He and Yan, 2019a).

634 At an even broader global scale, serotiny has arisen independently among 12 families
635 throughout the phylogeny for seed-bearing plants (Fig. 13). This covers a time span of almost 150
636 million years, coincident with the history of fireprone floras over that period, with serotiny arising
637 well before, or coincidentally with, the onset of fireproneness (Lamont and He, 2017). Beginning with
638 two conifer families (Taxodiaceae is embedded in Cupressaceae in this phylogeny), then proceeding to
639 the monocots (two families – Lyginiaceae is embedded in Restionaceae in this phylogeny). This is
640 followed by two ‘old’ Eudicot families, Proteaceae and Myrtaceae, then a moderately old family,
641 Casuarinaceae, and finally the modern Eudicot families, Ericaceae, Bruniaceae and Asteraceae. Each
642 of the ten families begins with nonserotiny and serotiny arrives later, sometimes early (Anarthriaceae,
643 Bruniaceae) and sometimes only recently (Ericaceae). Note that hundreds of other clades are fireprone
644 apart from the serotinous ones but they have quite different adaptations for fire survival.

646 *Overall evolutionary history of serotiny*

647 (Fig. 14, Table S3)

648 Collating the 31 records available for the ancestral condition of serotiny shows that it has arisen in
649 every 10-My interval over the last 110 My (Fig. 14). Three peaks may be identified: a small peak
650 towards the close of the Cretaceous corresponding to the origin of many extant families and their
651 early radiation, and two larger peaks in the Cenozoic: the Paleocene–mid-Eocene and
652 Oligocene–Early Miocene. The drop in trait diversification and proliferation rates in the 80–70
653 and 40–30-Ma periods corresponds to local depressions in charcoal deposition, temperature and
654 atmospheric O₂ (He and Lamont, 2017). Of particular note is the sharp drop of 4°C at 34 Ma
655 corresponding to the completion of the Antarctic circumpolar current at that time (as Australia
656 finally broke away) that correlates with the dip in O₂ levels and no doubt decreasing incidence of
657 fire as a selective force. The peaks at 60–40 and 30–0 Ma cannot easily be attributed to any
658 increase in charcoal deposits but they do correspond to the Early Eocene Thermal Optimum

659 (55–45 Ma) and Mid-Miocene Thermal Optimum (17–14 Ma) with their expected positive effect
660 on fire activity and the evolution of fire-adapted traits. Clearly, seasonality began to take control
661 of the fire patterns as O₂ levels started to fall from 30 Ma. Conversely, since evolution of
662 serotiny/pyriscence requires fireprone conditions, these patterns of speciation can be used to imply
663 the prevailing levels of fire activity as experienced by these clades through time, independent of
664 charcoal data that will always be an inadequate and biased record of the occurrence of fire beyond
665 wetlands where fossils are best preserved (He et al., 2012).

666 It is noteworthy that a recent independent analysis of the subfamily Callitroideae,
667 Cupressaceae, produced much the same pattern with geological time (Crisp et al., 2019; Fig. 14).
668 The exception was the marked diversification of nonserotinous taxa over the last 10 My that can
669 be attributed to both diversification of non-fireprone species and entry into savanna-type habitats.
670 Novel fire-adapted traits may appear in response to the imposition of an initial fire regime (the
671 outcome of primary directional selection) and be replaced later by a change in the fire regime
672 (secondary directional selection) or be retained in the daughter lineage while non-fire-related traits
673 arise in response to other agents of selection (stabilisation) (Lamont, He and Yan, 2019a). Overall,
674 the initiation/(loss) of serotiny coincided with the simultaneous origin of the genera or clade and
675 advent of fire-proneness in 31% of cases, millions of years later due to a change in the fire regime
676 in 29% of cases, and serotiny was retained (stabilized) as continuing to be adaptive in 32% of
677 cases. The evolution of serotiny is associated with the historical occurrence of fire from non-
678 fireprone ancestors, and its occasional absence in serotinous clades has been the result of more
679 recent changes in the fire regime. The loss of serotiny completes the evolutionary cycle but under
680 quite different environments than originally – there are few records so far of lineages returning to
681 the everwet forests of their ancestors. Leptospermoid Myrtaceae may provide one exception,
682 where trees with vestigial (blind) epicormic buds may be present in non-fireprone rainforest
683 (Clarke et al., 2012) and these are also nonserotinous.

684 Over geological time, the only way to gauge the incidence and net rate of trait change is
685 via speciation. The four well-studied clades already considered here (Figs. 9, 10, 13) are now
686 collated (Table S3) to show enormous variation in the rates over the Cenozoic with a tendency for
687 both serotiny and nonserotiny to peak over the last 5 million y (My) in three clades, but over the
688 last 15–5 My in *Hakea*. The three clades whose ancestral state is serotiny have tended to favor
689 serotiny over evolutionary time, and vice versa, consistent with their preferred habitats.

690 Callitroideae is fascinating for the fluctuating dominance of serotiny and nonserotiny over
691 evolutionary time: the immediate ancestors of Cupressaceae were probably nonserotinous
692 immediately followed by serotiny in Callitroideae then nonserotiny with a general decline in the
693 speciation rate coinciding with the world drops in temperature and O₂ (and a likely decrease in the
694 incidence of fire) peaking at 34 Ma (Fig. 14). This was followed by a marked increase in serotinous
695 species in the Oligocene-Miocene, followed by greater nonserotinous speciation over the last 10 My.
696 The greatest net rate for the evolution of serotiny over the last 5 My is 14 species/My among
697 temperate shrubland proteas followed by 5 species/My among pines. At the same time, pines yielded
698 18 nonserotinous species/My and savanna grassland proteas 3.5 species/My but the reasons differ:
699 pines migrated strongly into fire-free habitats, e.g., alpine (as did Callitroids), or frequently
700 (understory) burnt savanna woodlands/forests, while proteas migrated into frequently burnt, savanna

701 shrubby grasslands only (Table 4). *Hakea* is of particular interest for speciation of the serotinous
702 lineage far outstrips that of the nonserotinous in the Upper Miocene (contributing to this as the only
703 time in which serotiny exceeds nonserotiny overall for the four clades) with a few species moving
704 into non-fire-prone habitats and summer-rainfall savannas in the late Miocene.

705

706 CONSERVATION ISSUES

707

708 Understanding how anthropogenic climate change influences plant reproductive ecology is
709 fundamental to understanding how climate variation will affect plant communities in the future
710 (Parmesan & Hanley 2015). As we have shown, the expression of serotiny depends on the interplay
711 of fire-regime and a number of post-fire environmental conditions that dictate germination and
712 seedling recruitment success. Despite an expectation that fire frequency and intensity will increase in
713 Mediterranean-climate regions (at least until decreasing rainfall has a significant effect on reducing
714 fuel loads), the magnitude of shifts in fire regime remain uncertain (Pausas, 2004; IPCC, 2014). The
715 level of serotiny was higher among two Mediterranean pine species (*P. pinaster* and *P. halepensis*) in
716 populations from areas affected by more frequent fires over the last 30 y (Hernández-Serrano et al.,
717 2013; see also Vincenzi, & Piotti, 2014). Added to this, declining and more unpredictable interfire
718 precipitation regimes in Mediterranean-climate regions, especially during the key winter seedling
719 recruitment period (IPCC, 2014), will add further stress on fire-following plants with the serotinous
720 habit in particular at serious risk of local extinction (Lamont et al., 2007; Enright et al., 2014) and
721 possible selection for earlier reproductive maturity and increased serotiny (Vincenzi and Piotti,
722 2014). On the other hand, invasion by serotinous pines, with their greater seed stores, is now
723 occurring in regions where endemic levels of serotiny are negligible (Rafaele et al., 2016).

724 Habitat fragmentation may also have an effect on fire regimes, with any impact on fire
725 frequencies depending on proximity to human activity (e.g. arson) and local land-use type (Keeley et
726 al., 1999; Syphard et al., 2007; Regan et al., 2010). Moreover, despite a considerable amount of work
727 on the separate effects of altered fire frequencies and fragmentation on plant populations, few if any
728 studies have considered the two factors in combination (Regan et al., 2010). Habitat fragmentation
729 also affects serotinous species in other ways. Many of the serotinous Proteaceae characteristic of
730 southwestern Australia and the Cape of South Africa, for instance, are bird-pollinated and effective
731 cross-pollination (in the case of *Banksia hookeriana*) often involves the movement of bird pollinators
732 over considerable distances (Krauss et al., 2009). Although by no means unique to serotinous species,
733 disruption of plant mating systems in fragmented landscapes represents a further problem for the
734 many bird-pollinated species that also tend to be strongly serotinous (Lamont, Klinkamer and
735 Witkowski, 1993). When faced with shifts in land-use, weakly serotinous or nonserotinous species
736 may take advantage of increased disturbance. Hanley & Lamont (2001) not only showed how weakly
737 serotinous Western Australian Proteaceae exhibited much greater interfire recruitment than their
738 strongly serotinous conspecifics, but at least two weakly serotinous species (*Dryandra sessilis* and
739 *Hakea trifurcata*) are common invasives in disturbed areas near roadways and tracks through
740 reserves (M. E. Hanley, personal observations). Thus, it seems likely that increased anthropogenic
741 creation of bare areas will favour non- or weakly serotinous species over strongly serotinous species.

742 Serotinous species in South Africa and Australia are highly favored in the wildflower trade
743 (Rebelo and Holmes, 1988; Lamont et al., 2007; van Deventer et al., 2016). Harvesting is usually

744 undertaken from wild populations but plantation sources are increasing (Blokker, Bek and Binns,
745 2015). Thus, 34.0% of produce exported among 170 species in Western Australia are from serotinous
746 species (Anonymous, 2018), even though they only contribute 13.8% of the total flora. Of the 41
747 species harvested in the wildflower trade in the Agulhas Plain, 76% are serotinous (van Deventer,
748 Bek and Ashwell, 2016), even though serotinous species only account for 2% of the Cape flora. The
749 conservation status of many of these species is considered threatened or vulnerable. Bloom
750 harvesting greatly reduces the subsequent size of the canopy-stored seed bank, especially when levels
751 of harvesting rise above 30% (Lamont et al., 2001; Treurnicht et al., 2017). This is especially so for
752 the fire-killed nonsprouters, which account for 80% of the harvested species (Deventer, Bek and
753 Ashwell, 2016), as this group is entirely dependent of seedlings for postfire recovery. This
754 exacerbates the likelihood of local extinction among serotinous nonsprouters that are already the
755 most vulnerable to decreasing rainfall and increasing fire frequency/intensity associated with climate
756 change (Enright et al., 2014). High levels of harvesting can also substantially increase plant
757 mortality, e.g., mortality in commercially exploited *Brunia albiflora* populations ranged 8–33%
758 compared with only 1–3% natural mortality (Rebello and Holmes, 1988). Many serotinous species are
759 also highly susceptible to the root-rot fungus, *Phytophthora cinnamomi* (Lamont et al., 2007).

760

761 RESEARCH CHALLENGES

762

763 Much has been learned about the processes controlling the biology of serotiny since the publication
764 of a major review on its ecological significance 30 years ago (Lamont et al., 1991). Lamont and
765 Enright (2000) listed worthwhile research topics that remained, some of which have been achieved
766 and others that have not. Enright et al. (2007) stands alone as an overt comparison of the relative
767 taxonomic and spatial distribution of geospory and serotiny in an entire fireprone system, concluding
768 that 95% of species exhibited some sort of storage. That serotiny might enhance genetic diversity
769 equivalent to that of the multiple generations represented by soil storage has been examined only
770 once and shown to occur surprisingly fast in a postfire population of *Banksia hookeriana* (Barrett et
771 al., 2005). It was noted then that demographic models would be greatly improved if there was a
772 sounder knowledge of plant longevity – this has received little overt monitoring since but it continues
773 to be important and there have been attempts at estimating longevity among long-lived species
774 (Merwin et al., 2012, Martin-Sanz et al., 2016). The early indications that the germination of some
775 serotinous seeds could benefit from heat pulses or survive extraordinarily high temperatures, both
776 akin to the responses of geosporous species, has been confirmed (Hanley and Lamont 2001, Tangney
777 et al. 2019). This suggests that selection for insulation from fire heat may not be the prime or only
778 function of protective structures.

779

780 Once it is recognized that seed serotiny is only part of a vital reproductive syndrome for
781 hundreds of species, it opens the way to examine how selective forces shape a wide array of traits,
782 not just those that control the rate of cone/fruit opening. We list 23 that appear relevant here (Table
783 1): the operating mechanism of only one is beginning to be understood in any detail (Huss et al.,
784 2018, 2019) and the genetic basis of any one of them is only understood at a crude correlative level.
785 Having identified what traits are involved in the serotiny/nonserotiny syndromes this opens the way
786 for intensive study of their genetic basis and what genes control their expression. With increasing
interest in the heritability of serotiny (Parchman et al., 2012, Budde et al., 2014, Vincenzi and Piotti,

787 2014, Castellanos, González-Martínez and Pausas, 2015, Feduck et al., 2015), it is essential that the
788 index reflects the extent to which viable seeds remain stored on the plant over time and is not
789 confounded by plant age, fecundity or growing conditions. The most stable index in this regard is the
790 slope measure of serotiny but our literature survey shows that it has only been adopted as the
791 standard measure in Australia. Indices of serotiny are most meaningful when calculated on a viable
792 seed basis but this is almost never done. A critical look at what exactly the indices of serotiny
793 currently available measure, and how they can be improved, is required.

794 A particular challenge is identifying the morphological, environmental or genetic basis for
795 why some seeds are released early and others late (in the absence of fire) within the same population,
796 plant or cone (Salvatore et al. 2010). Huss et al. (2017) have done an excellent job in elucidating the
797 anatomical (but not yet chemical) basis of the differences in level of serotiny along a climatic gradient.
798 Fruits or cones exposed to direct sunlight appear to open early (soliscence, Lamont 1991) that has yet
799 to be formally documented, but this only occurs under special circumstances. We have assumed that
800 the seeds released in the absence of fire are genetically nonserotinous in our models (Figs. 4, 6). What
801 is the actual gene store for serotiny (S) among individuals in a population at increasing times since
802 fire? One puzzle is, if they are (epi)genetically distinct, how weakly/non-serotinous and serotinous
803 seeds are recognized by the mother plant such that the former are released early and the latter later or
804 never? Are there within-plant/cone spatial, temporal, morphological or physiological aspects that
805 control early or late release of seeds? This may well involve epigenetic inheritance (Lind and
806 Spagopoulou 2018); maternal control has received insightful recent study in some species (Li et al.
807 2017) but has yet to be tackled in the context of serotiny (Hudson et al. 2015).

808 REFERENCES

- 809
810
811 Anonymous. 2018. Management of Commercial Harvesting of Protected Flora in Western Australia,
812 1 July 2018- 30 June 2023. Department of Biodiversity, Conservation and Attractions, Perth.
- 813 Barrett L.G., T. He, B. B. Lamont, and S. L. Krauss. 2005. Temporal patterns of genetic variation
814 across a 9-year-old aerial seed bank of the shrub *Banksia hookeriana* (Proteaceae). *Molecular*
815 *Ecology* 14:4169–4179.
- 816 Battersby, P. F., J. M. Wilmshurst, T. J. Curran, M. S. McGlone, and G. L. Perry. 2017. Exploring fire
817 adaptation in a land with little fire: serotiny in *Leptospermum scoparium* (Myrtaceae). *Journal of*
818 *Biogeography* 44:1306–1318.
- 819 Benca, J. P., I. A. Duijnste, and C. V. Looy. 2018. UV-B–induced forest sterility: Implications of
820 ozone shield failure in Earth’s largest extinction. *Science Advances* 4:e1700618.
- 821 Benkman, C.W., T. L. Parchman, A. Favis, and A. M. Siepielski. 2003. Reciprocal selection causes a
822 coevolutionary arms race between crossbills and lodgepole pine. *American Naturalist* 162:182–
823 194.
- 824 Bergman, N. M., T. M. Lenton, and A. J. Watson 2004. COPSE: a new model of biogeochemical
825 cycling over Phanerozoic time. *American Journal of Science* 304:397–437.
- 826 Blokker T., D. Bek, T. Binns 2015. Wildflower harvesting on the Agulhas Plain, South Africa:
827 challenges in a fragmented industry. *South African Journal of Science* 111(11/12).
- 828 Borger, C. P. D., M. Walsh, J. K. Scott, and S. B. Powles. 2007. Tumbleweeds in the Western
829 Australian cropping system: seed dispersal characteristics of *Salsola australis*. *Weed Research*

830 47:406–414.

831 Budde, K. B., M. Heuertz, A. Hernández-Serrano, J. G. Pausas, G. G. Vendramin, M. Verdú, and S.C.
832 González-Martínez. 2014. *In situ* genetic association for serotiny, a fire-related trait, in
833 Mediterranean maritime pine (*Pinus pinaster*). *New Phytologist* 201:230-241.

834 Buma, B., C. D. Brown, D. C. Donato, J. B. Fontaine, and J. F. Johnstone. 2013. The impacts of
835 changing disturbance regimes on serotinous plant populations and communities. *BioScience*
836 63:866–876.

837 Calvo, L., V. Hernández, L. Valbuena, and A. Taboada. 2016. Provenance and seed mass determine
838 seed tolerance to high temperatures associated to forest fires in *Pinus pinaster*. *Annals of Forest*
839 *Science* 73:381–391.

840 Castellanos, M.C., S. C. González-Martínez, and J. G. Pausas. 2015. Field heritability of a plant
841 adaptation to fire in heterogeneous landscapes. *Molecular Ecology* 24:5633-5642.

842 Causley, C. L., W. M. Fowler, B. B. Lamont and T. He. 2016. Fitness benefits of serotiny in fire- and
843 drought-prone environments. *Plant Ecology* 217:773–779.

844 Clarke, P. J., M. J. Lawes, J. J. Midgley, B. B. Lamont, F. Ojeda, G. E. Burrows, N. J. Enright, and K.
845 J. E. Knox. 2012. Resprouting as a key functional trait: how buds, protection and reserves drive
846 persistence after fire. *New Phytologist* 197:19–35.

847 Cowling, R. M. and B. B. Lamont. 1987. Post-fire recruitment of four co-occurring *Banksia* species.
848 *Journal of Applied Ecology* 24:645-658.

849 Cowling, R. M., and B. Lamont. 1985a. Variation in serotiny of three *Banksia* spp. along a climatic
850 gradient. *Australian Journal of Ecology* 10:345-350.

851 Cowling, R. M., and B. Lamont. 1985b. Seed release in *Banksia*: the role of wet-dry cycles.
852 *Australian Journal of Ecology* 10:169–171.

853 Cramer, M. D., and J. J. Midgley. 2009. Maintenance costs of serotiny do not explain weak serotiny.
854 *Austral Ecology* 34:653–662.

855 Crawford, A. D., J. A. Plummer, R. J. Probert, R.J. and K. J. Steadman. 2010. The influence of cone
856 age on the relative longevity of *Banksia* seeds. *Annals of Botany* 107:303-309.

857 Crisp, M. D., L. G. Cook, D. M. Bowman, M. Cosgrove, Y. Isagi, and S. Sakaguchi. 2019. Turnover
858 of southern cypresses in the post-Gondwanan world: extinction, transoceanic dispersal, adaptation
859 and rediversification. *New Phytologist* 221:2308–2319.

860 dos Santos, P., H. Matias, E. Deus, A. Águas, and J. S. Silva. 2015. Fire effects on capsules and
861 encapsulated seeds from *Eucalyptus globulus* in Portugal. *Plant Ecology* 216:1611–1621.

862 Elliott, P. F. 1974. Evolutionary responses of plants to seed-eaters: pine squirrel predation on
863 Lodgepole pine. *Evolution* 28:221–231.

864 Enright, N. J. and B. B. Lamont. 1992. Recruitment variability in the resprouting shrub *Banksia*
865 *attenuata* and non-sprouting congeners in the northern sandplain heaths of south-western Australia.
866 *Acta Oecologica* 13:727–741.

867 Enright, N. J., and B. B. Lamont. 1989. Fire temperatures and follicle-opening requirements in ten
868 *Banksia* species. *Australian Journal of Ecology* 14:107–113.

869 Enright, N. J., E. Mosner, B. P. Miller, N. Johnson, and B. B. Lamont. 2007. Soil vs. canopy seed
870 storage and plant species coexistence in species-rich Australian shrublands. *Ecology* 88:2292–
871 2304.

872 Enright, N. J., J. B. Fontaine, B. B. Lamont, B. P. Miller, and V. C. Westcott. 2014. Resistance and
873 resilience to changing climate and fire regime depend on plant functional traits. *Journal of Ecology*
874 102:1572–1581.

875 Enright, N. J., R. Marsula, B. B. Lamont, and C. Wissel. 1998a. The ecological significance of canopy
876 seed storage in fire-prone environments: a model for nonsprouting shrubs. *Journal of Ecology*
877 86:946–959.

878 Enright, N. J., R. Marsula, B. B. Lamont, and C. Wissel. 1998b. The ecological significance of
879 canopy seed storage in fire-prone environments: a model for resprouting shrubs. *Journal of*
880 *Ecology* 86:960–973.

881 Feduck, M., P. Henry, R. Winder, D. Dunn, R. I. Alfaro, and B. Hawkes. (2015). The genetic basis of
882 cone serotiny in *Pinus contorta* as a function of mixed-severity and stand-replacement fire
883 regimes. *BioRxiv*, 023267.

884 Gauthier, S., Y. Bergeron, and J. P. Simon. 1996. Effects of fire regime on the serotiny level of jack
885 pine. *Journal of Ecology* 84:539–548.

886 George, A. S. (1981). The genus *Banksia* L.f. (Proteaceae). *Nuytsia* 3:239–473.

887 Gill, A. M., and A. McMahon. 1986. A post-fire chronosequence of cone, follicle and seed production
888 in *Banksia ornata*. *Australian Journal of Botany* 34:425–433.

889 Givnish, T. J. 1981. Serotiny, geography, and fire in the pine barrens of New Jersey. *Evolution*
890 35:101–123.

891 Goubitz, S., R. Nathan, R. Roitemberg, A. Shmida, and G. Ne'eman. 2004. Canopy seed bank
892 structure in relation to: fire, tree size and density. *Plant Ecology* 173:191–201.

893 Goubitz, S., M. J. A. Werger, and G. Ne'eman. 2003. Germination response to fire-related factors of
894 seeds from nonserotinous and serotinous cones. *Plant Ecology* 169:195–204.

895 Groom, P. K., and B. B. Lamont. 1997. Fruit-seed relations in *Hakea*: serotinous species invest more
896 dry matter in predispersal seed protection. *Australian Journal of Ecology* 22:352–355.

897 Groom, P. K., and B. B. Lamont. 2010. Phosphorus accumulation in Proteaceae seeds: a synthesis.
898 *Plant and Soil* 334:61–72.

899 Groom, P. K., and B. B. Lamont. 2011. Regional and local effects on reproductive allocation in
900 epicormic and lignotuberous populations of *Banksia menziesii*. *Plant Ecology* 212:2003–2011.

901 Groom, P. K., and Lamont, B.B. 2015. *Plant Life of Southwestern Australia: Adaptations for Survival*.
902 De Gruyter Open, Warsaw, Poland.

903 Habrouk, A., J. Retana, and J. M. Espelta. 1999. Role of heat tolerance and cone protection of seeds
904 in the response of three pine species to wildfires. *Plant Ecology* 145:91–99.

905 Hanley, M. E. and B. B. Lamont. 2001. Herbivory, serotiny and seedling defence in Western Australian
906 Proteaceae. *Oecologia* 126:409–417.

907 Hanley, M. E., and B. B. Lamont. 2000. Heat pre-treatment and the germination of soil- and canopy-
908 stored seeds of Western Australian species. *Acta Oecologica* 21:315–321.

909 Hanley, M. E., B. B. Lamont, and S. W. Armbruster. 2009. Pollination and plant-defence traits co-
910 vary in Western Australian *Hakeas*. *New Phytologist* 182:251–260.

911 Harris, W., 2002. Variation of inherent seed capsule splitting in populations of *Leptospermum*
912 *scoparium* (Myrtaceae) in New Zealand. *New Zealand Journal of Botany* 40:405–417.

913 He T., B. B. Lamont, and K. S. Downes. 2011. *Banksia* born to burn. *New Phytologist* 191:184–196.

914 He T., B. B. Lamont, N. J. Enright, H. D'Agui, and W. D. Stock 2019. Environmental drivers and
915 genomic architecture of trait differentiation in fire-adapted *Banksia attenuata* ecotypes. Journal of
916 Integrative Plant Biology 61:417–432

917 He T., H. D'Agui, S. L. Lim, N. J. Enright and Y. Q. Luo. 2016b. Evolutionary potential and
918 adaptation of *Banksia attenuata* (Proteaceae) to climate and fire regime in southwestern Australia,
919 a global biodiversity hotspot. Scientific Reports 6: 26315.

920 He, T., and B. B. Lamont. 2018. Fire as a potent mutagenic agent among plants. Critical Reviews in
921 Plant Sciences 37:1–14.

922 He, T., C. M. Belcher, B. B. Lamont, and S. L. Lim. 2016a. A 350-million-year legacy of fire
923 adaptation among conifers. Journal of Ecology 104:352–363.

924 He, T., J. G. Pausas, C. M. Belcher, D. W. Schwilk, and B. B. Lamont. 2012. Fire-adapted traits of
925 *Pinus* arose in the fiery Cretaceous. New Phytologist 194:751–759.

926 Heinselman, M. L. 1981. Fire and succession in the conifer forests of northern North America. in D.
927 C. West, H.H. Shugart, and D. B. Botkin (eds) Forest succession (pp. 374-405). Springer, New
928 York, NY.

929 Hernández-Serrano, A., M. Verdú, S.C. González-Martínez, and J.G. Pausas. 2013. Fire structures
930 pine serotiny at different scales. American Journal of Botany 100:2349–2356.

931 Hernández-Serrano, A., M. Verdú, L.Santos-Del-Blanco, J. Climent, S. C. González-Martínez, and J.
932 G. Pausas. 2014. Heritability and quantitative genetic divergence of serotiny, a fire-persistence
933 plant trait. Annals of Botany 114:571–577.

934 Hudson, A. R., D. J. Ayre, and M.K. Ooi. 2015. Physical dormancy in a changing climate. Seed
935 Science Research 25:66–81.

936 Huss, J. C., P. Fratzl, J. W. Dunlop, D. J. Merritt, B. P. Miller, and M. Eder. 2019. Protecting
937 offspring against fire: Lessons from *Banksia* seed pods. Frontiers in Plant Science 10:283.

938 Huss, J. C., V., Schoeppler, D. J. Merritt, C. Best, E. Maire, J. Adrien, O. Speaker, N. Janssen, J.
939 Gladisch, N. Gierlinger, and B. P. Miller. 2018. Climate-dependent heat-triggered opening
940 mechanism of *Banksia* seed pods. Advanced Science 5:1700572.

941 IPCC, 2014: Climate Change 2014: Synthesis Report. Contribution of Working Groups I, II and III to
942 the Fifth Assessment Report of the Intergovernmental Panel on Climate Change [Core Writing
943 Team, R.K. Pachauri and L.A. Meyer (editors)]. IPCC, Geneva, Switzerland, 151 pp.

944 Jaureguiberry, P., and S. Díaz. 2015. Post-burning regeneration of the Chaco seasonally dry forest:
945 germination response of dominant species to experimental heat shock. Oecologia 177:689–699.

946 Judd, T. 1994. Do small myrtaceous seed-capsules displayspecialized insulating characteristics which
947 protect seed during fire? Annals of Botany 73:33–38.

948 Keeley J. E., C. J. Fotheringham, and M. Morais. 1999. Reexamining fire suppression impacts on
949 brushland fire regimes. Science 284:1829–1832.

950 Keeley, J. E. and P. H. Zedler. 1998. Evolution of life histories in *Pinus*. Pages 219–250 in Ecology
951 and Biogeography of *Pinus*, D. M. Richardson (ed). Cambridge University Press, , UK.

952 Keeley, J. E., J. G. Pausas, P. W. Rundel, W. J. Bond, W. J. and R. A. Bradshaw. 2011. Fire as an
953 evolutionary pressure shaping plant traits. Trends in Plant Science 16:406–411.

954 Krauss S. L., T. He, L. G. Barrett, B. B. Lamont, N. J. Enright, B. P. Miller, and M. E. Hanley. 2009.
955 Contrasting impacts of pollen and seed dispersal on spatial genetic structure in the bird-pollinated
956 *Banksia hookeriana*. *Heredity* 102:274–285.

957 Ladd, P. G., J. J. Midgley, and A. P. Nield, 2013. Serotiny in southern hemisphere conifers.
958 *Australian Journal of Botany* 61:486–496.

959 Lamont, B.B. 1988. Sexual versus vegetative reproduction in *Banksia elegans*. *Botanical Gazette*
960 149:370–375.

961 Lamont, B. B. 1991. Canopy seed storage and release: what's in a name? *Oikos* 60:266-268.

962 Lamont, B. B. and N. J. Enright. 2000. Adaptive advantages of aerial seed supports. *Plant Species*
963 *Biology* 15:157–166.

964 Lamont B. B., N. J. Enright, E. T. F. Witkowski, and J. Groeneveld. 2007. Conservation biology of
965 banksias: insights from natural history to simulation modelling. *Australian Journal of Botany* 55:
966 280–292.

967 Lamont, B. B. and T. He. 2017. When did a Mediterranean-type climate originate in southwestern
968 Australia? *Global and Planetary Change* 156:46–58.

969 Lamont, B. B., and D. Wiens, D. 2003. Are seed set and speciation always low among species that
970 resprout after fire, and why? *Evolutionary Ecology* 17:277–292.

971 Lamont, B. B., and D. Wiens. 2003. Are seed set and speciation always low among species that
972 resprout after fire, and why? *Evolutionary Ecology* 17:277–292.

973 Lamont, B. B., and E. T. F. Witkowski, 1995. A test for lottery recruitment among four *Banksia*
974 species based on their demography and biological attributes. *Oecologia* 101:299-308.

975 Lamont, B. B., and M. J. Barker. 1988. Seed bank dynamics of a serotinous, fire-sensitive *Banksia*
976 species. *Australian Journal of Botany* 36:193–203.

977 Lamont, B.B., P. G. Klinkhamer, and E. T. F. Witkowski. 1993. Population fragmentation may reduce
978 fertility to zero in *Banksia goodii* – a demonstration of the Allee effect. *Oecologia* 94:446-450.

979 Lamont, B. B., and P. K. Groom. 1998. Seed and seedling biology of the woody-fruited Proteaceae.
980 *Australian Journal of Botany* 46:387–406.

981 Lamont, B. B., and P. K. Groom 2013. Seeds as a source of carbon, nitrogen, and phosphorus for
982 seedling establishment in temperate regions: a synthesis. *American Journal of Plant Sciences* 4:30–
983 40. DOI: 10.4236/ajps.2013.45A005

984 Lamont, B. B., and R. M. Cowling. 1984. Flammable infructescences in *Banksia*: a fruit-opening
985 mechanism. *Australian Journal of Ecology* 9:295–296.

986 Lamont, B. B., and T. He. 2012. Fire-adapted Gondwanan Angiosperm floras arose in the Cretaceous.
987 *BMC Evolutionary Biology* 12:223.

988 Lamont, B. B., D. Le Maitre, R. M. Cowling, and N. J. Enright. 1991. Canopy seed storage in woody
989 plants. *The Botanical Review* 57:277–317.

990 Lamont, B. B., E. T. F. Witkowski, and N. J. Enright. 1993. Post-fire litter microsites: safe for seeds,
991 unsafe for seedlings. *Ecology* 74:501–512.

992 Lamont, B. B., R. Marsula, N. J. Enright, and E. T. F. Witkowski. 2001. Conservation requirements
993 of an exploited wildflower: modelling the effects of growing conditions, plant age and picking
994 intensity. *Biological Conservation* 99:157–168.

995 Lamont, B. B., R. Rees, E. T. F. Witkowski, and V. Whitten. 1994a. Comparative size, fecundity and
996 ecophysiology of roadside plants of *Banksia hookeriana*. *Journal of Applied Ecology* 31:137–144.

997 Lamont, B. B., S. Connell, and S. M. Bergl. 1991. Seed support and population dynamics of *Banksia*
998 *cuneata*: the role of time, fire and moisture. *Botanical Gazette* 152:114–122.

999 Lamont, B. B., S. M. El-Ahmir, S. L. Lim, P. K. Groom, and T. He. 2017b. Contribution of transition
1000 and stabilization processes to speciation is a function of the ancestral trait state and selective
1001 environment in *Hakea*. *BioRxiv* doi: org/10.1101/207373.

1002 Lamont, B.B., M. E. Hanley, P. K. Groom, and T. He. 2016a. Bird pollinators, seed storage and
1003 cockatoo granivores explain large woody fruits as best seed defence in *Hakea*. *Perspectives in Plant*
1004 *Ecology, Evolution and Systematics* 21:55–77.

1005 Lamont, B. B., T. He, and K. S. Downes. 2013. Adaptive responses to directional trait selection in the
1006 Miocene enabled Cape proteas to colonize the savanna grasslands. *Evolutionary Ecology* 27:1099–
1007 1115.

1008 Lamont, B. B., T. He, and Z. Yan. 2019a. Evolutionary history of fire-stimulated resprouting,
1009 flowering, seed release and germination. *Biological Reviews* 94:903–928.

1010 Lamont, B. B., T. He, and Z. Yan. 2019b. Fire as a pre-emptive evolutionary trigger among seed
1011 plants. *Perspectives in Plant Ecology, Evolution and Systematics* 36:13–23.

1012 Lamont, B. B., T. He, T and J. G. Pausas. 2017a. African geoxyles evolved in response to fire, frost
1013 came later. *Evolutionary Ecology* 31:306–617.

1014 Lamont, B. B., T. He, T and S. L. Lim. 2016b. *Hakea*, the world’s most sclerophyllous genus, arose
1015 in southwest Australian heathland and diversified throughout Australia over the last 12 million
1016 years. *Australian Journal of Botany* 64:77–88.

1017 Lamont, B. B., V. Whitten, E. T. F., Witkowski, R. Rees, and N. J. Enright. 1994b. Regional and local
1018 (road verge) effects on size and fecundity in *Banksia menziesii*. *Australian Journal of Ecology*
1019 19:197–205.

1020 Ledig, F. T., and S. Little. 1979. Pitch pine (*Pinus rigida* Mill.): ecology, physiology, and genetics.
1021 Pages 347-371 in R. T. Forman, editor. *Pine Barrens: Ecosystems and Landscape*. Academic Press,
1022 New York.

1023 Lev-Yadun, S., & G. Ne’eman. 2013. Bimodal colour pattern of individual *Pinus halepensis* Mill.
1024 seeds: a new type of crypsis. *Biological Journal of the Linnean Society* 109:271–278.

1025 Li, R., L. Chen, Y. Wu, R. Zhang, C. C. Baskin, J. M. Baskin, and X. Hu 2017. Effects of cultivar and
1026 maternal environment on seed quality in *Vicia sativa*. *Frontiers in Plant Science* 8:1411.

1027 Lind, M. I., and F. Spagopoulou. 2018. Evolutionary consequences of epigenetic inheritance. *Heredity*
1028 121:205–209.

1029 Lippert, C., J. Listgarten, Y. Liu, C. M. Kadie, R. I. Davidson, and D. Heckerman 2011. FaST linear
1030 mixed models for genome-wide association studies. *Nature Methods* 8:833–835.

1031 Long, R. L., M. J. Gorecki, M. Renton, J. K. Scott, L. Colville, D. E. Goggin...and Finch- Savage, W.
1032 E. 2015. The ecophysiology of seed persistence: a mechanistic view of the journey to germination
1033 or demise. *Biological Reviews* 90:31–59.

1034 Lovreglio R., R. Salvatore, P. Giaquinto, and V. Leone. 2007. Thermal treatments and germination
1035 response over time of seeds from serotinous and non serotinous cones of *Pinus halepensis* Mill.
1036 Pages 155–166 in V. Leone, and R. Lovreglio, editors. *Proceedings of the international workshop*

- 1037 MEDPINE 3: conservation, regeneration and restoration of Mediterranean pines and their
1038 ecosystems. CIHEAM Bari, Valenzano, Italy.
- 1039 Lowe, G. D. 2013/4. Geologic History of the Giant Sequoia and the Coast Redwood. NARG Special
1040 Publication No. 1 (Second printing, revised.) North America Research Group (Paleontology),
1041 Beaverton, Oregon.
- 1042 Martín-Sanz, R.C., L. Santos-del-Blanco, E. Notivol, M. R. Chambel, R. San-Martín, and J. Climent.
1043 2016. Disentangling plasticity of serotiny, a key adaptive trait in a Mediterranean conifer.
1044 American Journal of Botany 103:1582-1591.
- 1045 Martínez-Berdeja A., E. Ezcurra, and M. Torres. 2015. Morphological variability in propagules of a
1046 desert annual as a function of rainfall patterns at different temporal and spatial scales. Functional
1047 Ecology 29:1260–1267.
- 1048 Merwin, L., T. He, B. B. Lamont, N. J. Enright, and S. L. Krauss 2012. Low rate of between-
1049 population seed dispersal restricts genetic connectivity and metapopulation dynamics in a clonal
1050 shrub. PLoS ONE 7:e50974.
- 1051 Midgley J. J., et al. in press. Cryptic serotinous Proteaceae seeds reduce detection by avian predators
1052 on post-fire soils. Functional Ecology
- 1053 Midgley J. J., R. M. Cowling, and B. B. Lamont. 1991. Relationship of follicle size and seed size in
1054 *Hakea* (Proteaceae); isometry, allometry and adaptation. South African Journal of Botany 57:107–
1055 110.
- 1056 Moya, D., J. Espelta, F. Lopez-Serrano, M. Eugenio, and J. De las Heras. 2008. Natural post-fire
1057 dynamics and serotiny in 10-year-old *Pinus halepensis* Mill. stands along a geographic gradient.
1058 International Journal of Wildland Fire 17:287–292.
- 1059 Nathan, R., U. N. Safriel, I. Noy-Meir, and G. Schiller. 1999. Seed release without fire in *Pinus*
1060 *halepensis*, a Mediterranean serotinous wind-dispersed tree. Journal of Ecology 87:659–669.
- 1061 Ne'eman, G., S. Goubitz, and R. Nathan. 2004. Reproductive traits of *Pinus halepensis* in the light of
1062 fire – a critical review. Plant Ecology 171:69–79.
- 1063 Pannell, J. R., and P. J. Myerscough. 1993. Canopy-stored seed supports of *Allocasuarina distyla* and
1064 *A. nana* in relation to time since fire. Australian Journal of Botany 41:1–9.
- 1065 Parchman T. L., Z. Gompertz, J. Mudge, F. D. Schilkey, C. W. Benkman, and C. A. Buerkle. 2012.
1066 Genome-wide association genetics of an adaptive trait in lodgepole pine. Molecular Ecology
1067 21:2991–3005.
- 1068 Parmesan, C. and M. E. Hanley. 2015. Plants and climate change: complexities and surprises. Annals
1069 of Botany 115:849–864.
- 1070 Pausas J. G., and B. B. Lamont. 2018. Ecology and biogeography in 3D: the case of the Australian
1071 Proteaceae. Journal of Biogeography 45:1469–1477.
- 1072 Pausas J. G., B. B. Lamont, S. Paula, B. Appezzato-da-Glória, and A. Fidelis. 2018. Unearthing
1073 belowground bud supports in fire-prone ecosystems. New Phytologist 217:1435–1448.
- 1074 Pausas J.G., and J. E. Keeley. 2014. Evolutionary ecology of resprouting and seeding in fire-prone
1075 ecosystems. New Phytologist 204:55–65.
- 1076 Pausas, J. G. 2004. Changes in fire and climate in the Eastern Iberian Peninsula (Mediterranean
1077 Basin). Climate Change 63:337–350.
- 1078 Pausas, J. G. 2015. Bark thickness and fire regime. Functional Ecology 29:317–327.

- 1079 Pausas, J. G., R. A., Bradstock, D. A. Keith, and J. E. Keeley. 2004. Plant functional traits in relation
1080 to fire in crown-fire ecosystems. *Ecology* 85:1085–1100.
- 1081 Raffaele, E., M. A. Nuñez, J. Eneström, and M. Blackhall. 2016. Fire as mediator of pine invasion:
1082 evidence from Patagonia, Argentina. *Biological Invasions* 18:597–601.
- 1083 Rebelo, T. 2001. *Proteas: a field guide to the proteas of Southern Africa*, 2nd edn. Fernwood Press,
1084 Cape Town.
- 1085 Rebelo, G., and P. M. Holmes. 1988. Commercial exploitation of *Brunia albiflora* (Brunaceae) in
1086 South Africa. *Biological Conservation* 45:195–207.
- 1087 Regan H. M., J. B. Crookston, R. Swab, J. Franklin, D. M. Lawson. 2010. Habitat fragmentation and
1088 altered fire regime create trade-offs for an obligate seeding shrub. *Ecology* 91:1114–1123.
- 1089 Salvatore R., D. Moya, L. Pulido, R. Lovreglio, F. R. López-Serrano, J. De las Heras, and V. Leone.
1090 2010. Advances on anatomy and morphology of Aleppo pine serotinous seeds. *New Forests*
1091 39:329–341.
- 1092 Santini, B. A., and C. Martorell. 2013. Does retained–seed priming drive the evolution of serotiny in
1093 drylands? An assessment using the cactus *Mammillaria hernandezii*. *American Journal of Botany*
1094 100:365–373.
- 1095 Saracino, A., C. M. D’Alessandro, & M. Borghetti. 2004. Seed colour and post-fire bird predation in
1096 a Mediterranean pine forest. *Acta Oecologica* 26:191–196.
- 1097 Saracino, A., R. Pacella, V. Leone, and M. Borghetti. 1997. Seed dispersal and changing seed
1098 characteristics in a *Pinus halepensis* Mill. forest after fire. *Plant Ecology* 130:13–19.
- 1099 Schwilk, D. W., and D. D. Ackerly. 2001. Flammability and serotiny as strategies: correlated
1100 evolution in pines. *Oikos* 94:326–336.
- 1101 Siepielski, A. M., and C. W. Benkman. 2004. Interactions among moths, crossbills, squirrels, and
1102 Lodgepole pine in a geographic selection mosaic. *Evolution* 58:95–101.
- 1103 Silva, G. H., A. C. José, J. M. R. Faria, and W. V. S. Pereira. 2017. Aspects of *Peltophorum dubium*
1104 Sprengel (Taubert) seeds in an aerial seed bank. *Journal of Seed Science* 39:32–40.
- 1105 Susko, D. J, and L. Lovett-Doust. 2000. Patterns of seed mass variation and their effects on seedling
1106 traits in *Alliaria petiolata*. *American Journal of Botany* 87:56–66.
- 1107 Syphard A.D., K. C. Clarke, and J. Franklin. 2007. Simulating fire frequency and urban growth in
1108 southern California coastal shrublands, USA. *Landscape Ecology* 22:431– 445.
- 1109 Talluto, M. V., and C. W. Benkman. 2013. Landscape-scale eco-evolutionary dynamics: Selection by
1110 seed predators and fire determine a major reproductive strategy. *Ecology* 94:1307–1316.
- 1111 Talluto, M. V., and C. W. Benkman. 2014. Conflicting selection from fire and seed predation drives
1112 fine-scaled phenotypic variation in a widespread North American conifer. *Proceedings of the*
1113 *National Academy of Sciences* 111:9543–9548.
- 1114 Tangney, R., D. J. Merritt, J. B. Fontaine, and B. P. Miller. 2019. Seed moisture content as a primary
1115 trait regulating the lethal temperature thresholds of seeds. *Journal of Ecology* 107:1093–1105.
- 1116 Tapias, R., L. Gil, P. Fuentes-Utrilla, J. A. Pardos. 2001. Canopy seed banks in Mediterranean pines
1117 of southeastern Spain: a comparison between *Pinus halepensis* Mill., *P. pinaster* Ait., *P. nigra*
1118 Arn. and *P. pinea* L. *Journal of Ecology* 89:629–638.
- 1119 Teich, A.H., 1970. Cone serotiny and inbreeding in natural populations of *Pinus Banksiana* and *Pinus*
1120 *contorta*. *Canadian Journal of Botany* 48:1805–1809.

- 1121 Tonnabel, J., T. J. Van Dooren, J. Midgley, P. Haccou, A. Mignot, O. Ronce, and I. Olivieri. 2012.
1122 Optimal resource allocation in a serotinous non-resprouting plant species under different fire
1123 regimes. *Journal of Ecology* 100:1464–1474.
- 1124 Treurnicht, M. 2017. Spatial variation in sensitivity of serotinous Proteaceae to wildflower harvesting
1125 inferred from large-scale demographic data in the Cape Floristic Region. *Proceedings Fynbos*
1126 *Forum*, University of Cape Town, S Africa.
- 1127 Treurnicht, M., J. Pagel, K. J. Esler, A. Schutte-Vlok, H. Nottebrock, T. Kraai. and F. M. Schurr,
1128 F. M. 2016. Environmental drivers of demographic variation across the global geographical range
1129 of 26 plant species. *Journal of Ecology* 104:331–342.
- 1130 Van Deventer, G., D. Bek, and A. Ashwell. 2016. *Field Guide for Wild Flower Harvesting*. Coventry
1131 University Press, Coventry. Doi:10.13140/RG.2.1.4654.4248.
- 1132 Vincenzi, S., and A. Piotti. 2014. Evolution of serotiny in maritime pine (*Pinus pinaster*) in the light
1133 of increasing frequency of fires. *Plant Ecology* 215:689–701.
- 1134 White, N. E., M. J. Phillips, M. T. P. Gilbert, A. Alfaro-Núñez, E. Eske Willerslev, P. R. Mawson, P.
1135 B. S. Spencer, and M. Bunce. 2011. The evolutionary history of cockatoos (Aves: Psittaciformes:
1136 *Cacatuidae*). *Molecular Phylogenetics and Evolution* 59:615–622.
- 1137 Zachos, J. C., G. R. Dickens and Zeebe, R. E. 2008. An early Cenozoic perspective on greenhouse
1138 warming and carbon-cycle dynamics. *Nature* 451:279–283.
- 1139 Zanne A. E., D. C. Tank, W. K. Cornwell, J. M. Eastman, S. A. Smith. 2014. Three keys to the
1140 radiation of angiosperms into freezing environments. *Nature* 506:89–92.

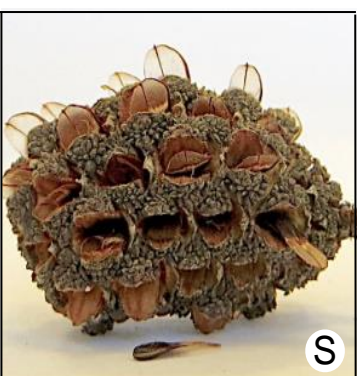
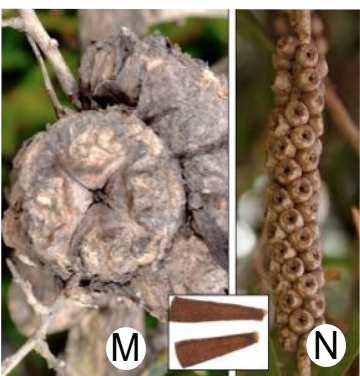
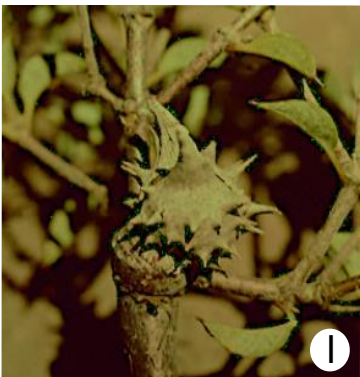
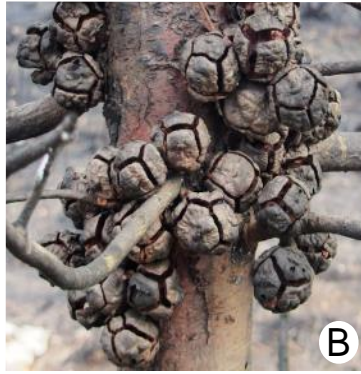
Box 1

THE CONCEPT OF SEROTINY

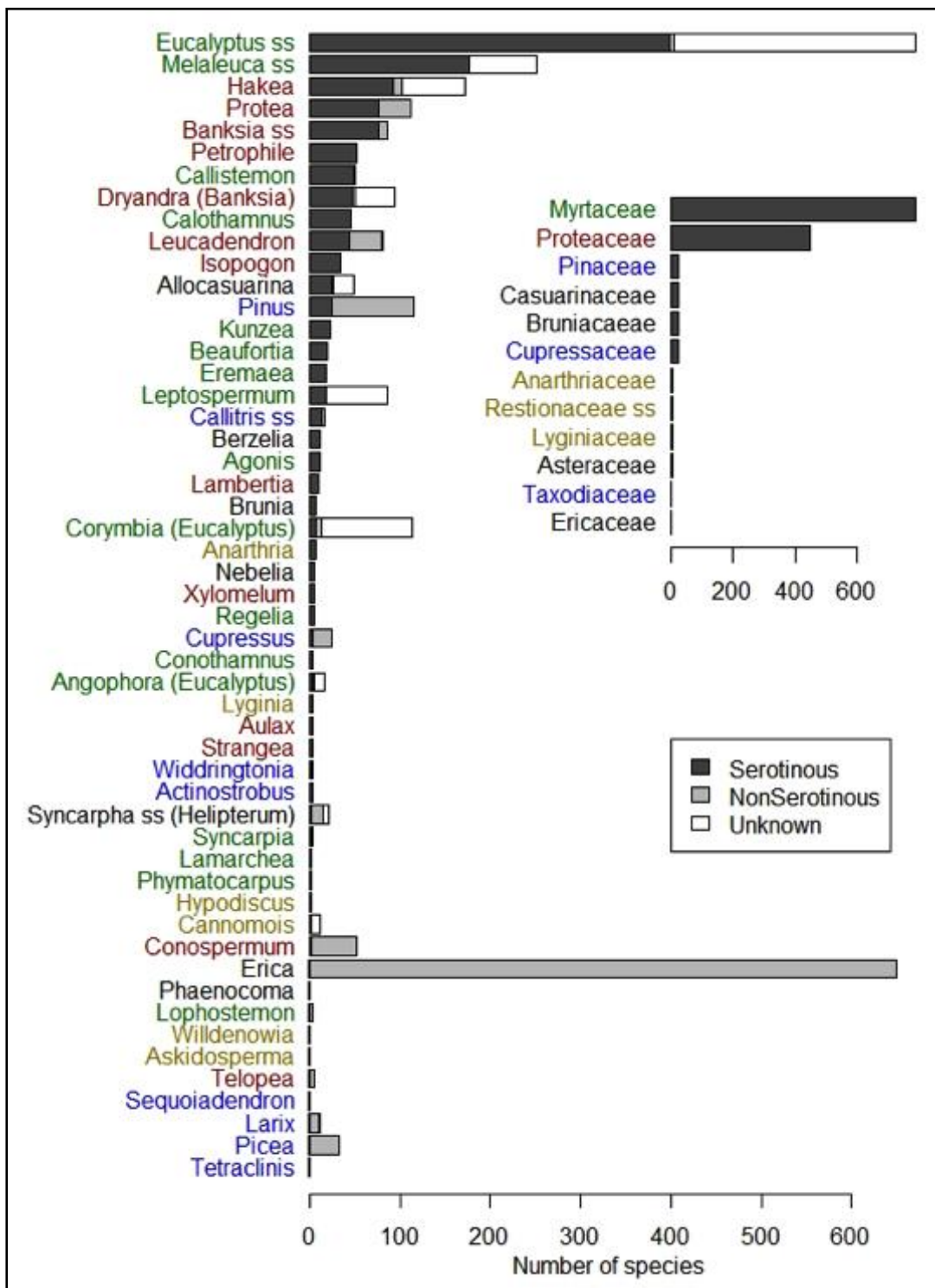
The origin of the term serotiny is quite general in meaning: delayed occurrence of an event (Lamont, 1991). Thus, strictly one should refer to serotinous fruits or cones (delayed opening in release of seeds) or serotinous seeds (prolonged retention on the plant). However, this rider is hardly ever used, and reference to serotinous individuals and species is taken to imply the prolonged retention of seeds on the mother plant. “Prolonged” is usually interpreted as retention of some seeds in the presence of at least the next crop of mature seeds (Lamont and Enright, 2000). Cones/fruits, individuals, populations or species can be described as i) nonserotinous (seeds released at maturity), ii) weakly serotinous (seeds retained for 1–4 y), moderately serotinous (5–9 y), or iv) strongly serotinous (10+ y). Individual plants within a population may be assigned to any of these four categories – this may have a temporal or growing condition component (e.g., most cones/fruits might be open in moribund plants, all cones/fruits might be closed with only 1–2 y crops on them, vigorously growing plants will mostly comprise young, closed cones/fruits). Among pines and proteas, cones are usually either closed (immature, green; older, brown – some may open) or open (old, grey). This also applies to species with solitary woody fruits, such as hakeas, with similar colour changes apparent. For other clades, with clusters of fruits (eucalypts) or cones (banksias), the fraction of open fruits per cluster/cone may vary in any year’s crop (Lamont et al. 1994a).

In all cases, the supporting structures gradually open and release their seeds over time, but at different rates. As the structures age, so the threshold cue required to stimulate opening becomes less intense, e.g., lower temperatures are needed (Enright and Lamont 1989), and they begin to open spontaneously. It is the rate at which this occurs, independent of crop size, that determines the ‘true’ level of serotiny (Cowling and Lamont 1985a). The fraction of all cones/fruits closed on a plant at a given time is an estimate of ‘apparent’ serotiny as any differences in annual crop size (with their different levels of opening) are not taken into account. Nevertheless, even the ‘slope’ measure of serotiny will be susceptible to say, increases in mean temperatures due to climate change, so that it is not possible to identify ‘absolute’ (genetically based) levels of serotiny – it will always have an environmental component (Hernández-Serrano et al. 2014).

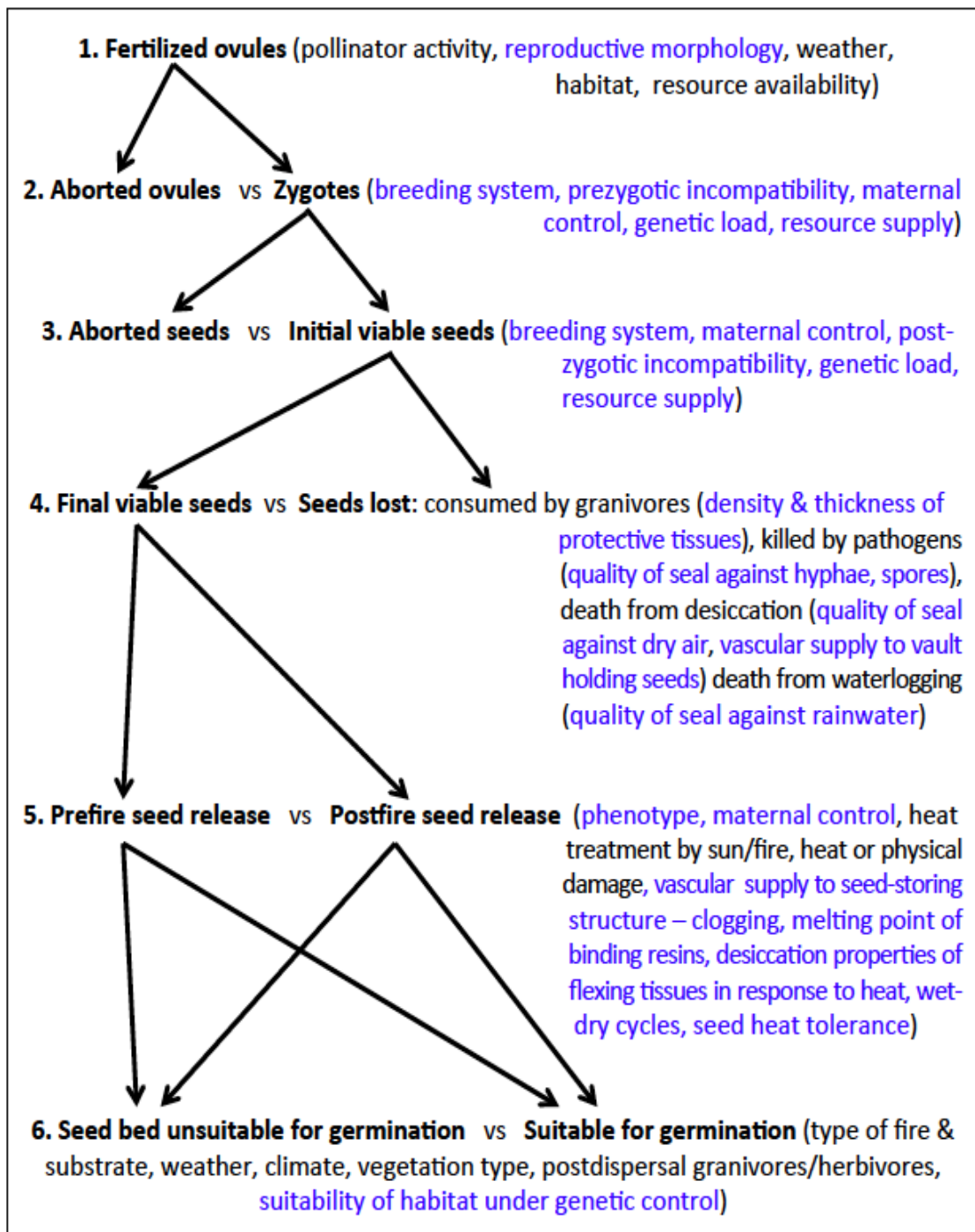
In other contexts, the concept of serotiny has been widened to include seeds retained i) on a dead ephemeral plant where seed dispersal relies on dislodgement during highly stochastic rainfall events in desert environments (Martínez-Berdeja, Ezcurra and Torres, 2015) or physical dislodgement during movement as a wind-blown ‘tumbleweed’ (Borger et al., 2007; Long et al. 2015), ii) within the cladode of certain cacti (*Mammillaria*) that ensures the seeds become ‘primed’ before dislodgement by rain (Santini and Martorell, 2013), and iii) on a living plant for up to nine months beyond the point of reaching maturity with retention of heat-tolerant proteins during that time without any obvious environmental cue for release has been recorded in a few hard-seeded legumes (*Peltophorum*) (Silva et al. 2017). All these examples lack the three attributes that characterize the many hundreds of species that are the subject of this monograph: a) on-plant storage of most mature seeds for at least a year, b) retention of seeds within woody supporting structures, and c) seed release in response to fire that may have a direct or indirect role in seed release (e.g., melting of binding resins, death of the supporting branch with associated desiccation processes).



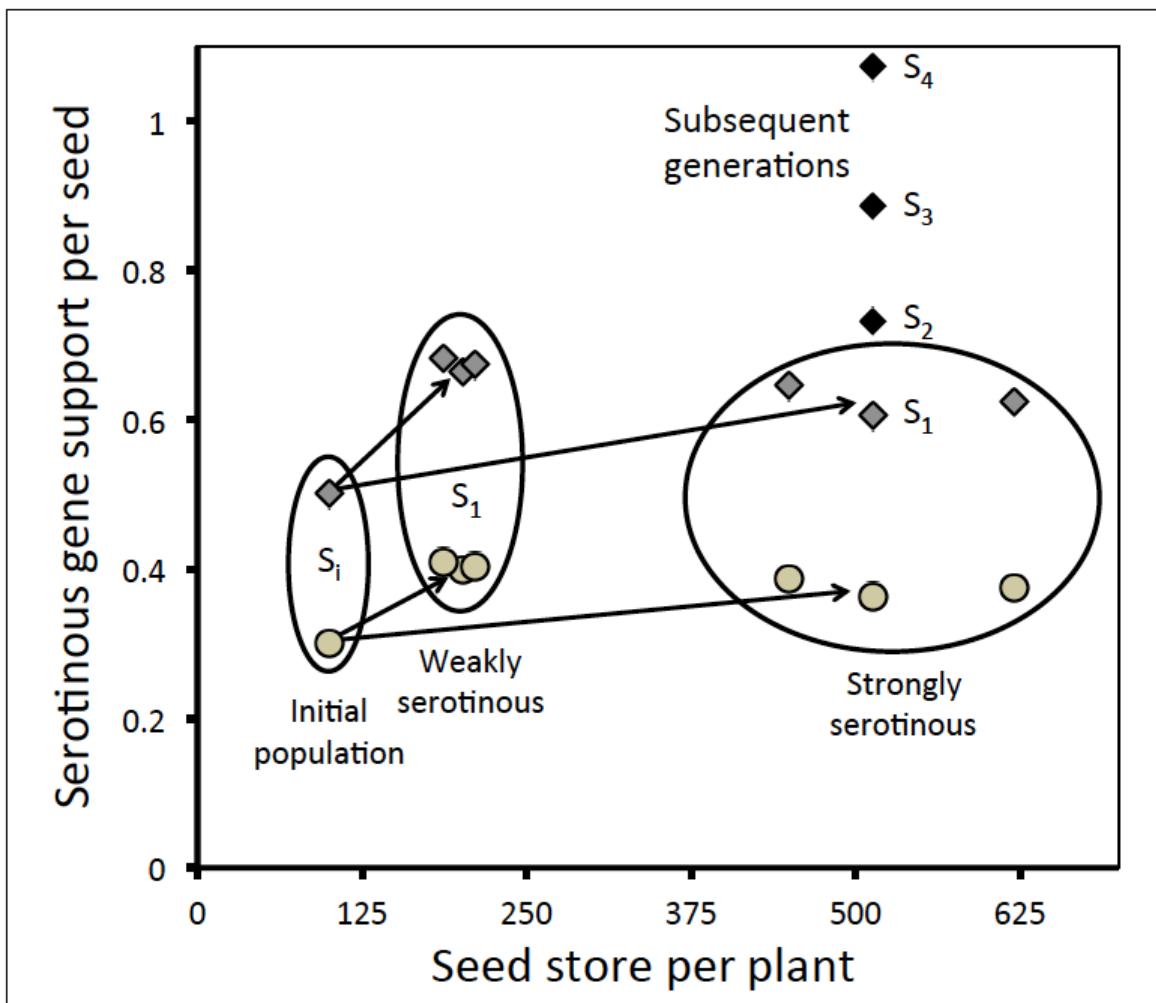
1143 Fig. 1. Selection of serotinous structures and their association with postfire seed release and seedling
 1144 establishment. (from left to right, top to bottom). A) Pyramidal cones (strobili) of *Callitris*
 1145 (*Actinostrobus*) *pyramidalis* (Cupressaceae) (15 mm long); B) Postfire globular cones of *Cupressus*
 1146 *sempervirens* (Cupressaceae) (30 mm diameter) in Spain with scale complexes beginning to separate
 1147 in order to release seeds; C) Ovoid cone of *Pinus patula* (13 cm long) in Mexico, note fibrous bark
 1148 and retention of foliage that would enhance flammability around the cone; D) Postfire ovoid cones
 1149 of *P. radiata* (10 cm long) from California, with reflexed scales that have allowed the release of
 1150 their seeds, note how the annual clustering of cones enables their age to be determined; E) Two
 1151 follicles, 40 mm long, of *Hakea cyclocarpa* (Proteaceae), whose recurving prevents the ovipositor of
 1152 insect granivores from penetrating the thinnest part of the fruit; F) *Hakea stenocarpa* follicle (35
 1153 mm long) mimicking branchlet (warts and all!); G) three follicles of *H. platysperma* (65 mm long),
 1154 the largest fruits of all 170 *Hakea* species, whose size and globular shape resist penetration by the
 1155 main granivore of hakeas, the black cockatoo (reconstructed head on left); H) *Xylomelum*
 1156 *angustifolium* (Proteaceae) follicle, the heaviest among all species with woody fruits, with one of its
 1157 two seeds showing mottling that might serve a cryptic function postfire; I) *Lambertia echinata*
 1158 (Proteaceae) follicle (15 mm wide) with sharp spines not unlike surrounding foliage; J) Globular
 1159 cone of *Banksia lemanniana* (Proteaceae) with 12 follicles (35 mm wide) showing among persistent
 1160 dead florets and leaves that enhance flammability; K) *B. hookeriana* (2 m tall) alight, showing
 1161 scores of floret-covered cones alight but which survive the heat; L) Postfire *B. leptophylla* cone (85
 1162 mm diameter) showing split separator pulling two winged seeds out of a ruptured follicle; M)
 1163 Cluster of corky, cup-shaped capsules (20 mm wide) of *Leptospermum spinescens* (Myrtaceae),
 1164 Inset: two seeds of *Callistemon (Melaleuca) teretifolius* (1 mm long) [South Australian Seed
 1165 Conservation Centre]; N) Elongated, spiral-arranged cluster of sessile capsules of *Callistemon*
 1166 *citrinus* (Myrtaceae) (80 mm long) in NSW, Victoria [Fir0002/Flagstaffotos, GFDL v1.2]; O) Five
 1167 woody capsules of *Eucalyptus tottiana* (Myrtaceae) that have released their contents on drying out
 1168 postfire, three fertile seeds on the left and six aborted seeds on the right, Inset: capsules of
 1169 *Angophora hispida* (Myrtaceae), 8 mm wide, already released their seeds even though subtended by
 1170 current season's leaves (nonserotinous), in NSW [http://www.friendsoflanecovenationalpark.org.au/Angophora_hispida.htm]; P) 5 spikes of *Connomois parviflora* (Restionaceae) (12 mm long) each
 1172 bearing one nutlet in W Cape, [Tony Rebelo, <https://www.inaturalist.org/photos/15419835>]; Q)
 1173 *Protea burchellii* (Proteaceae) in W Cape with loose cone of dry bracts and florets (100 mm long)
 1174 that burn off when ignited [Elana Mostert, iSpot]; R) fruits of *Protea burchellii*, with tuft of brown
 1175 hairs (15 mm diameter), released onto an ashbed after fire; S) Cone of *Allocasuarina torulosus*
 1176 (Casuarinaceae) (30 mm long) with scores of samaras emerging from pairs of woody valves when
 1177 left to dry out on a bench [Ian T. Riley, with permission]; T) Globular-ovoid cone of *Isopogon*
 1178 *trilobus* (Proteaceae) (35 mm long) with 150 tightly bound scales (bracteoles) with only a few
 1179 bearing flattened, fertile nuts; U) Loosely clustered, ovoid cones of *Petrophile brevifolia* (20 mm
 1180 long), sparsely scaled and bearing few nuts V) Seedlings (5–12 cm tall) from serotinous *H.*
 1181 *polyanthema*, *B. attenuata* and *B. hookeriana* in litter microsite (see Lamont et al. 1993). Plants
 1182 native to SW Australia unless otherwise indicated. E–I, L, N, O photographed by B. Lamont; B–D
 1183 by J. Pausas; A, J, M, T, U by T. He.



1184
 1185 Fig. 2. Taxonomic distribution of serotiny (dark grey), and nonserotiny (light grey) in clades
 1186 that include serotinous species, plus numbers of species yet to be examined in the clade (white).
 1187 The large graph is at genus level and the inset is at family level. Conifers are given in blue,
 1188 monocots in gold, and the rest are dicots: Myrtaceae is given in green, Proteaceae in red, and the
 1189 smaller groups in black. See Table S1 for details on their geography, morphology, habitats and
 1190 supporting references.

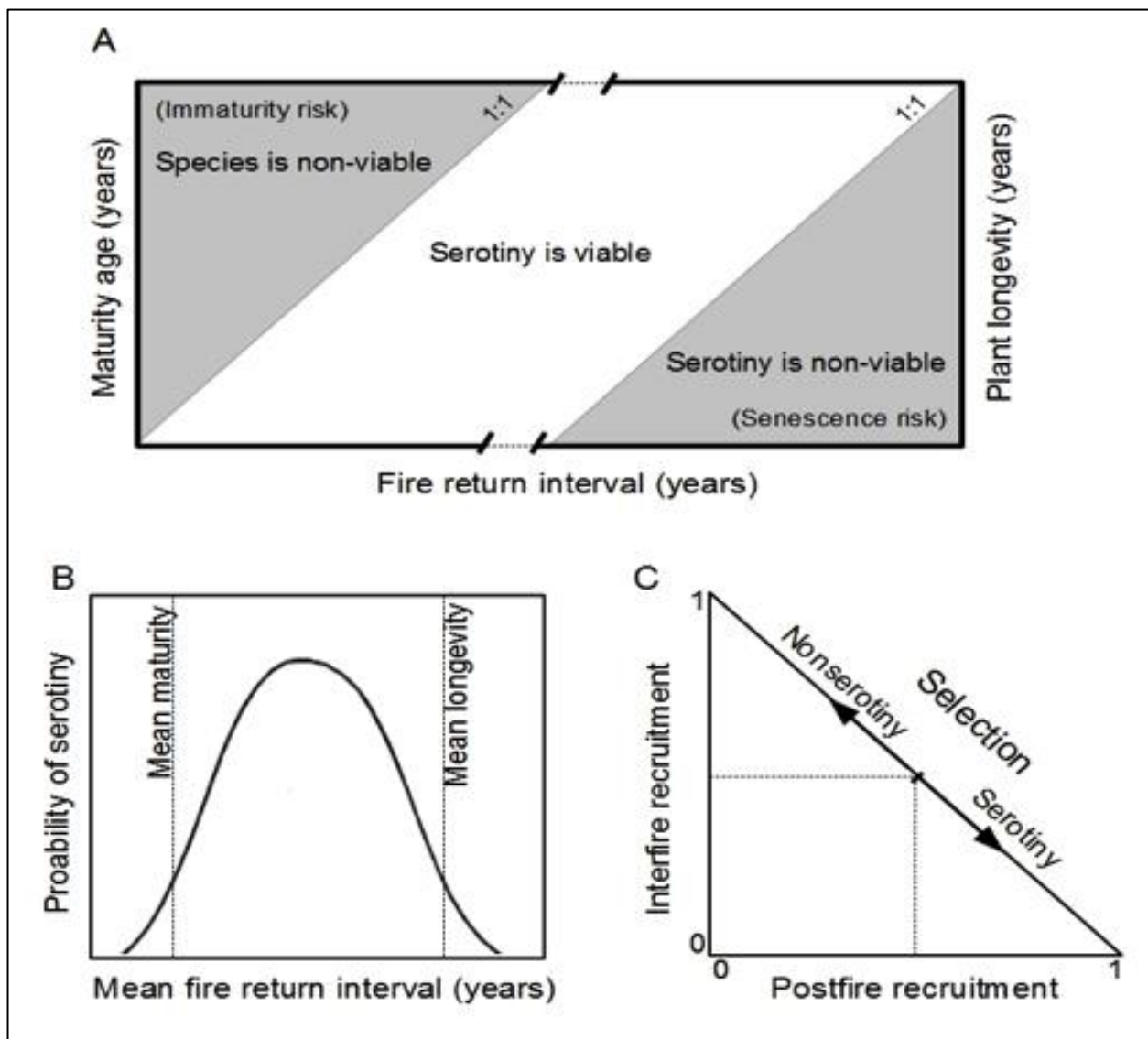


1191
 1192 Fig. 3. Sequence of events involved in the success or otherwise of on-plant seed storage and
 1193 release with the options at each step highlighted in bold. The constraints at each step are given in
 1194 parentheses and those subject to genetic control are highlighted in blue. Support obtained from
 1195 Ledig and Little (1979), Lamont et al. (1994a, b), Groom and Lamont (1997), Lamont and Enright
 1196 (2000), Lamont and Wiens (2002), Cramer and Midgley (2009), Parchman et al. (2012),
 1197 Hernández-Serrano et al. (2013), Talluto and Benkman (2013), Budde et al. (2014), Causley et al.
 1198 (2016), Huss et al. (2018, 2019), Tangney et al. (2019).

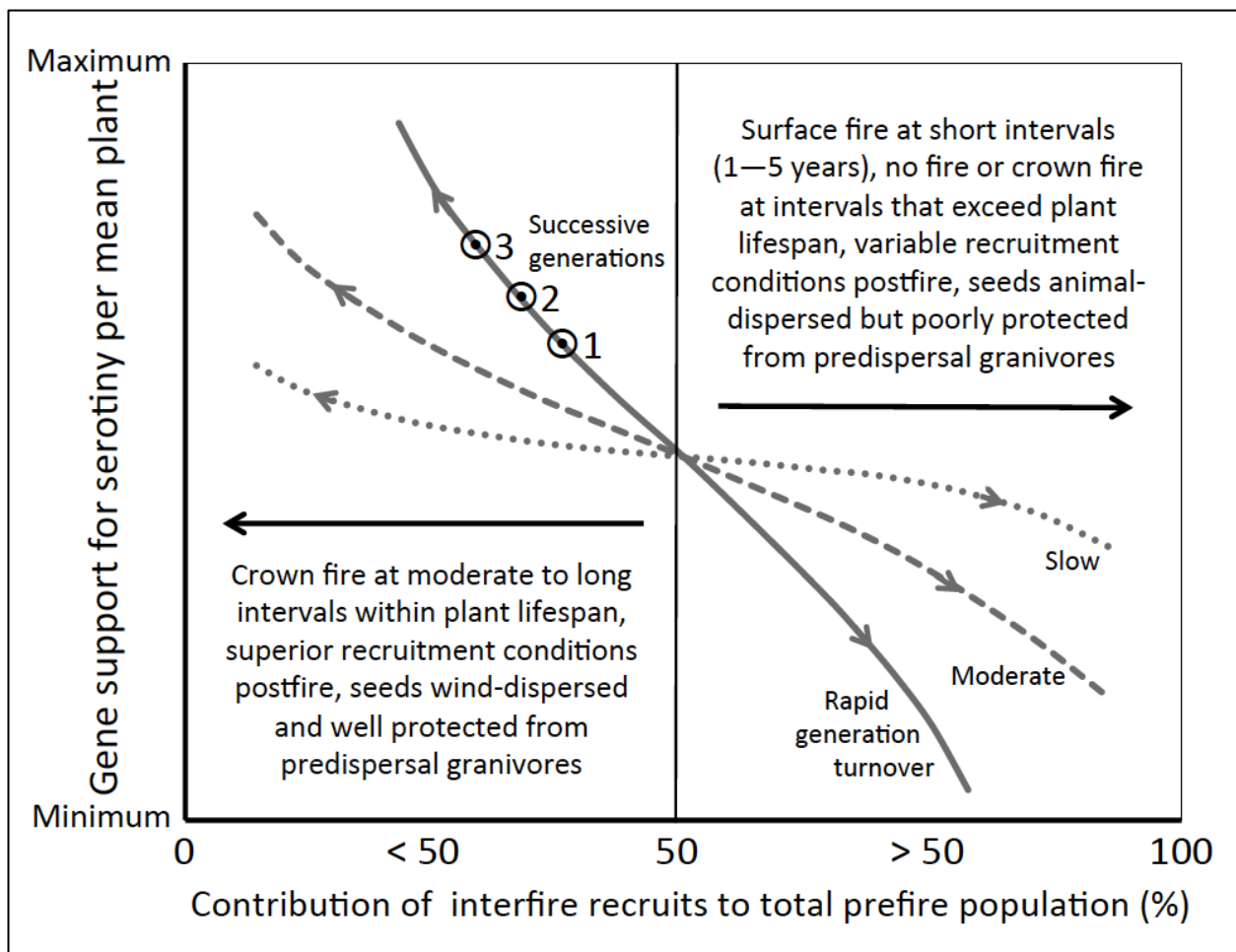


1199
1200

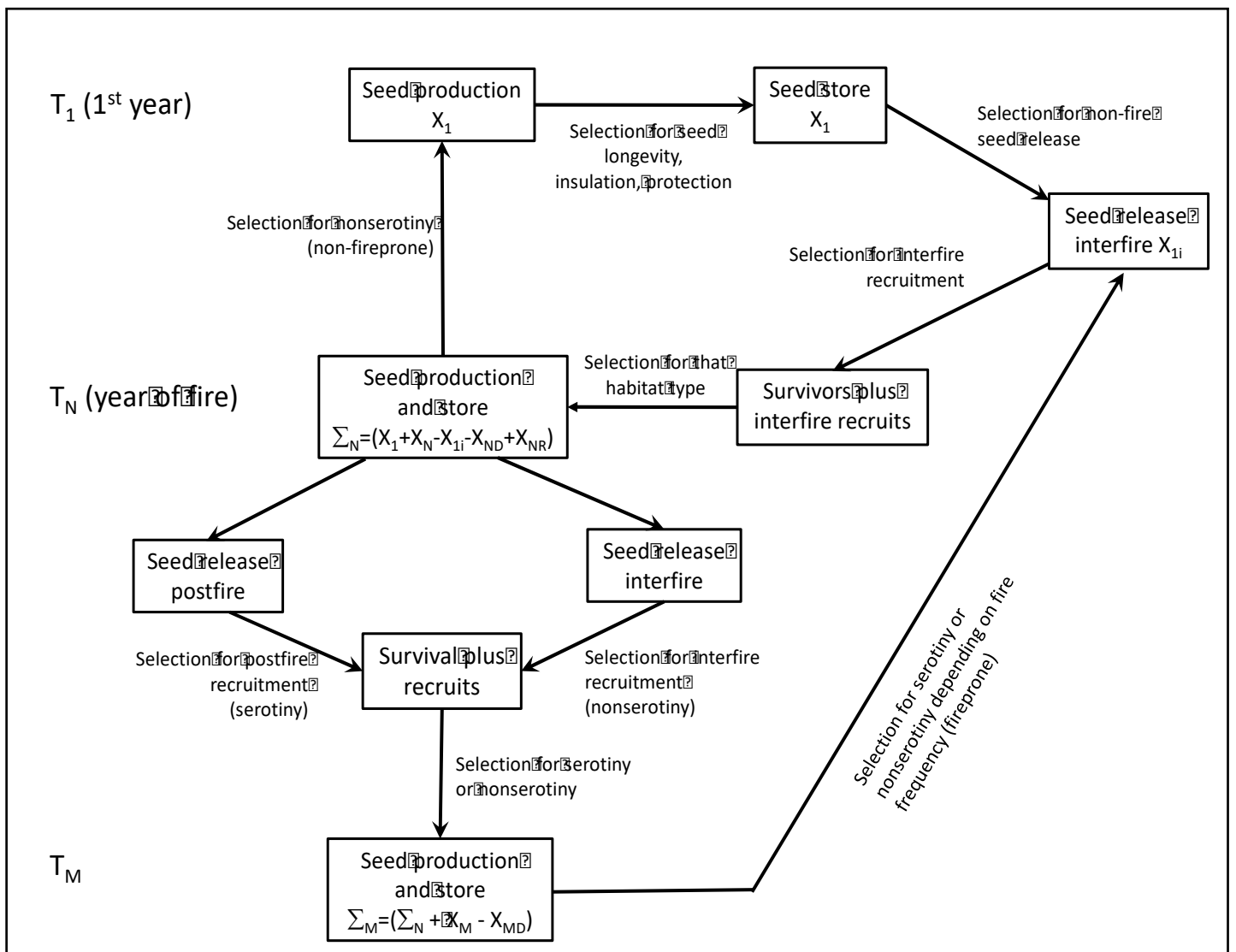
1201 Fig. 4. Model outcomes for the impact of initial level of serotiny and increasing gene support for
 1202 serotiny per seed (S) at two initial levels [$S_i = 0.3$ (circles), 0.5 (diamonds)] on seed storage and
 1203 gene support for the next postfire generation. The hypothetical plant produces 100 seeds in the
 1204 initial season and may store seeds for up to 4 y (weak serotiny) or 12 y (strong serotiny) with
 1205 seeds released at a steady rate from zero at y 1 (the slope measure of serotiny, Cowling and
 1206 Lamont 1985). Three scenarios are modelled: decreasing (left hand values), increasing (right
 1207 hand) or constant (middle) annual seed production over the ensuing 10 y. The arrows show how
 1208 both sets of S_1 values (circled) increase when genetically nonserotinous seeds are released by
 1209 individuals preferentially interfire. Note that S increases in each postfire population that replaces
 1210 the prefire population (S_1 to S_4) – illustrated here for the strongly serotinous population with
 1211 increasing seed production up to the current year, but the same trend applies to all scenarios.



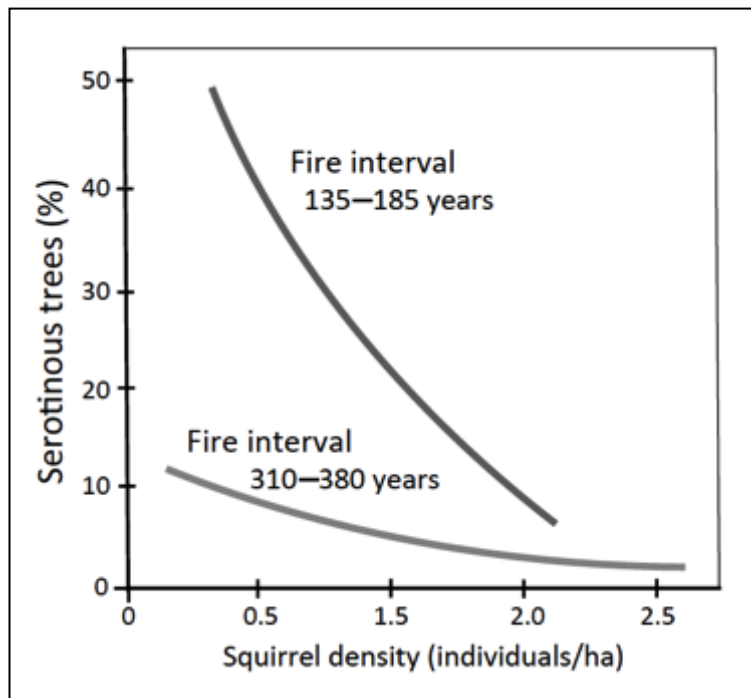
1212
 1213 Fig. 5. Models of the effects of varying fire return intervals (FRI) and ratio of postfire to interfire
 1214 recruitment success on serotiny as a viable option. A) Species and serotiny viability for FRI
 1215 relative to time to reach plant maturity and plant longevity (model based on Pausas and Keeley,
 1216 2014). B) Selection for serotiny is suppressed as mean FRI approaches or is less than mean age to
 1217 maturity and approaches or is greater than mean plant longevity. C) The ratio of successful
 1218 postfire to interfire seedling recruitment determines whether serotiny or nonserotiny are selected
 1219 for (expanded in Fig. 6).



1220
 1221 Fig. 6. Idealized relationship between gene support for serotiny per mean plant (S) and
 1222 contribution of interfire (inter) recruits to the total, interfire + postfire (post), population at three
 1223 rates of population turnover (R), slow, moderate or rapid. $S = R \times (S_i \pm S_i \times \text{inter/post})$. Prefire
 1224 conditions are either less (left of the 50% line) or more (right of the line) favorable for recruitment
 1225 over postfire. Thus, postfire-released seeds carry greater gene support for serotiny than those
 1226 released prefire. Equally, prefire released seeds carry greater gene support for nonserotiny. With
 1227 each successive generation, the level of serotiny will accelerate ($+ S_i \times \text{post/inter ratio}$) or
 1228 decelerate ($- S_i \times \text{inter/post ratio}$) depending on the rate of generation turnover until an optimum
 1229 is reached. Modelled on data in Givnish (1981), Cowling and Lamont (1985a), Lamont et al.
 1230 (1991), Gauthier, Bergeron and Simon (1996), Enright et al. (1998a, 1998b), Lamont and Enright
 1231 (2000), Goubitz, Ne'eman and Nathan (2003), Parchman et al. (2012), Talluto and Benkman
 1232 (2013), Hernández-Serrano et al. (2013,2014), Budde et al. (2014), Calvo et al. (2016), Battersby
 1233 et al. (2017), Table 3.



1235 Fig. 7. Flow chart of the steps (boxed) and types of selection occurring between these stages
 1236 (arrowed) involved in accounting for the evolution of particular levels of serotiny, or nonserotiny,
 1237 at the population scale. The single interfire/fire cycle given here is repeated many times [T_M (year
 1238 M) back to T_1] until an adaptive equilibrium is reached. X = number of seeds, i = interfire, Σ =
 1239 total seed store, D = nonviable (dead) seeds, R = recruits. The fire occurs in year N – seed release
 1240 interfire includes seeds released up to the time of the fire. Depending on their relative survival and
 1241 fecundity in relation to the fire regime, strongly or weakly serotinous or nonserotinous individuals
 1242 build up in the population. Summarized from Tables 1 and 2, and Figs 3, 5 and 6.



1243

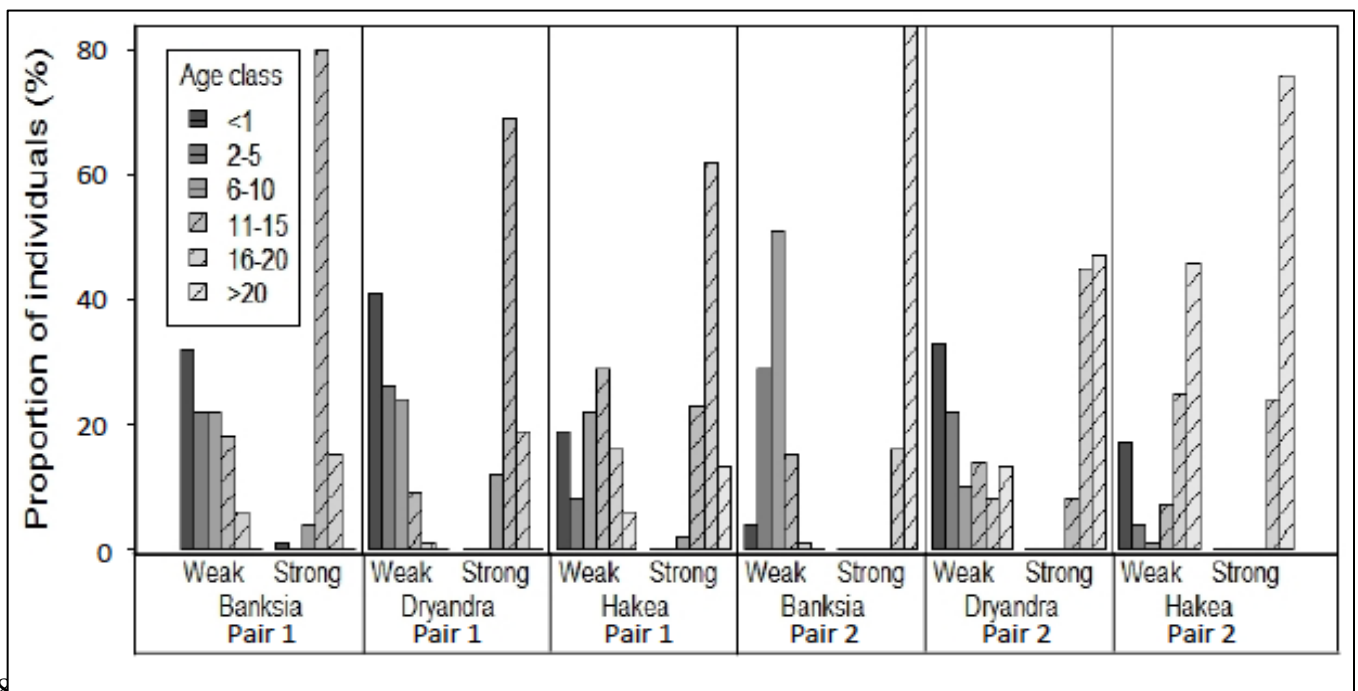
1244

1245

1246

1247

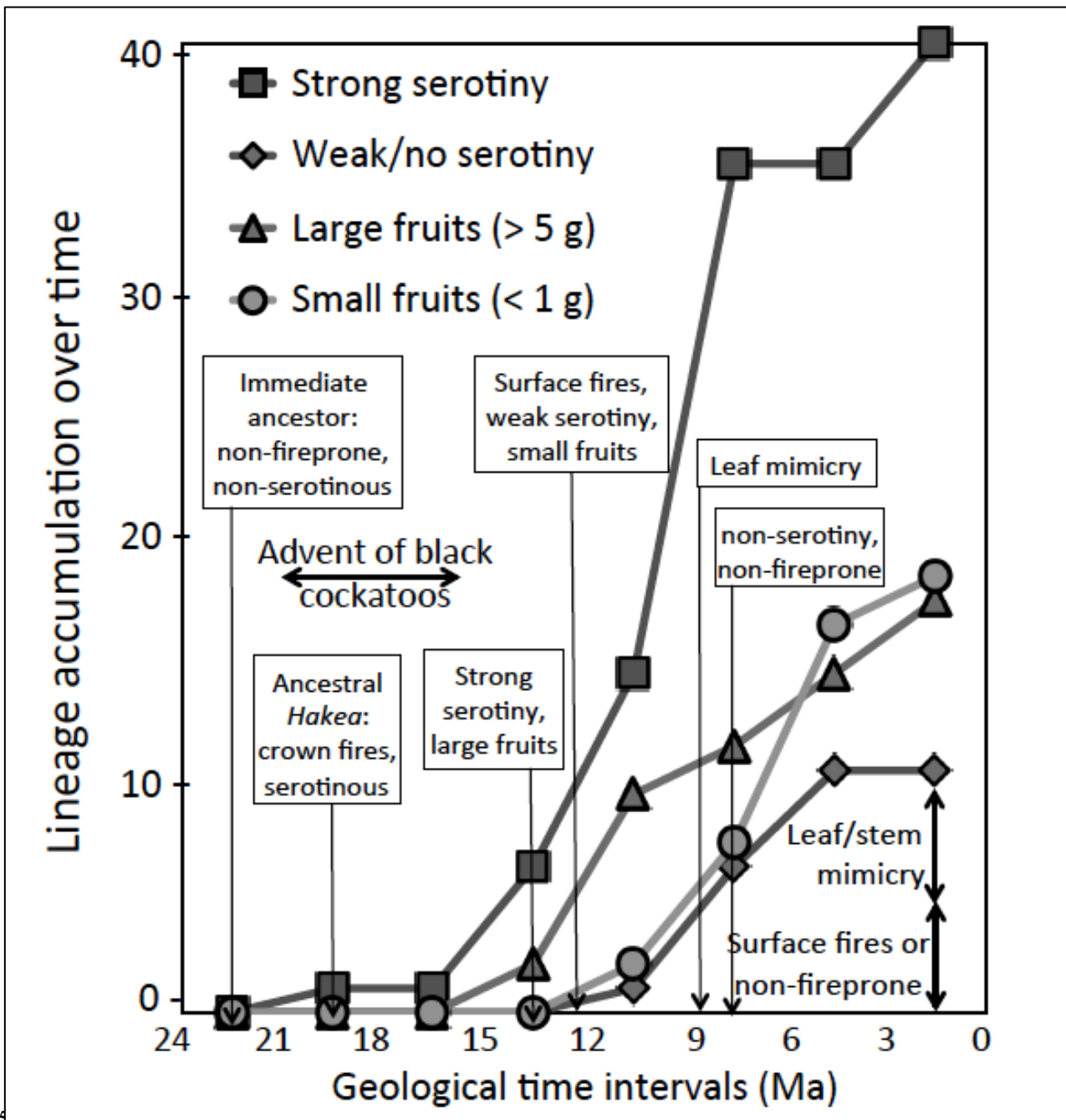
Fig. 8. Relationship between squirrel abundance (as an index of seed granivory) and level of serotiny (best fit lines to frequency of serotinous trees) among *Pinus contorta* subsp. *latifolia* stands at two mean fire intervals. Simplified and redrawn from Talluto and Benkman (2014).



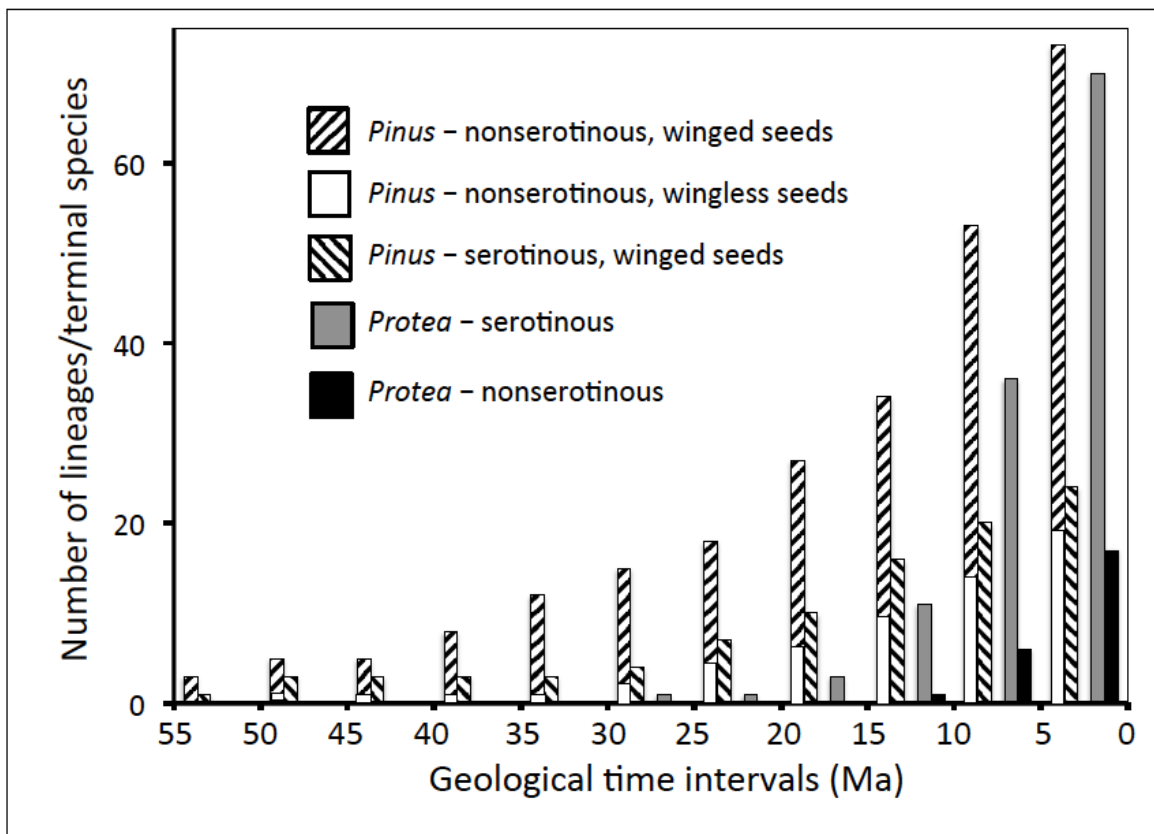
1248

1249

1250 Fig. 9. Distribution of age classes among 12 species of woody shrubs in the Proteaceae (2
 1251 *Banksia*, 2 *Dryandra*, 2 *Hakea* species pairs) in scrub-heath vegetation of SW Australia. Within
 1252 each genus, Pair 1 is separated from Pair 2 by 700 km and one of the pair is weakly serotinous
 1253 (recruits spread over many years) and the other is strongly serotinous (recruits restricted to the
 1254 year or so after fire). If a fire occurred at this time and assuming interfire plants < 10 years old
 1255 make little contribution to seed availability (hatched bars), then 36% of weakly serotinous,
 1256 prefire plants on average would contribute seeds to the next generation while 97% of strongly
 1257 serotinous plants would. Drawn from data in Hanley and Lamont (2001).

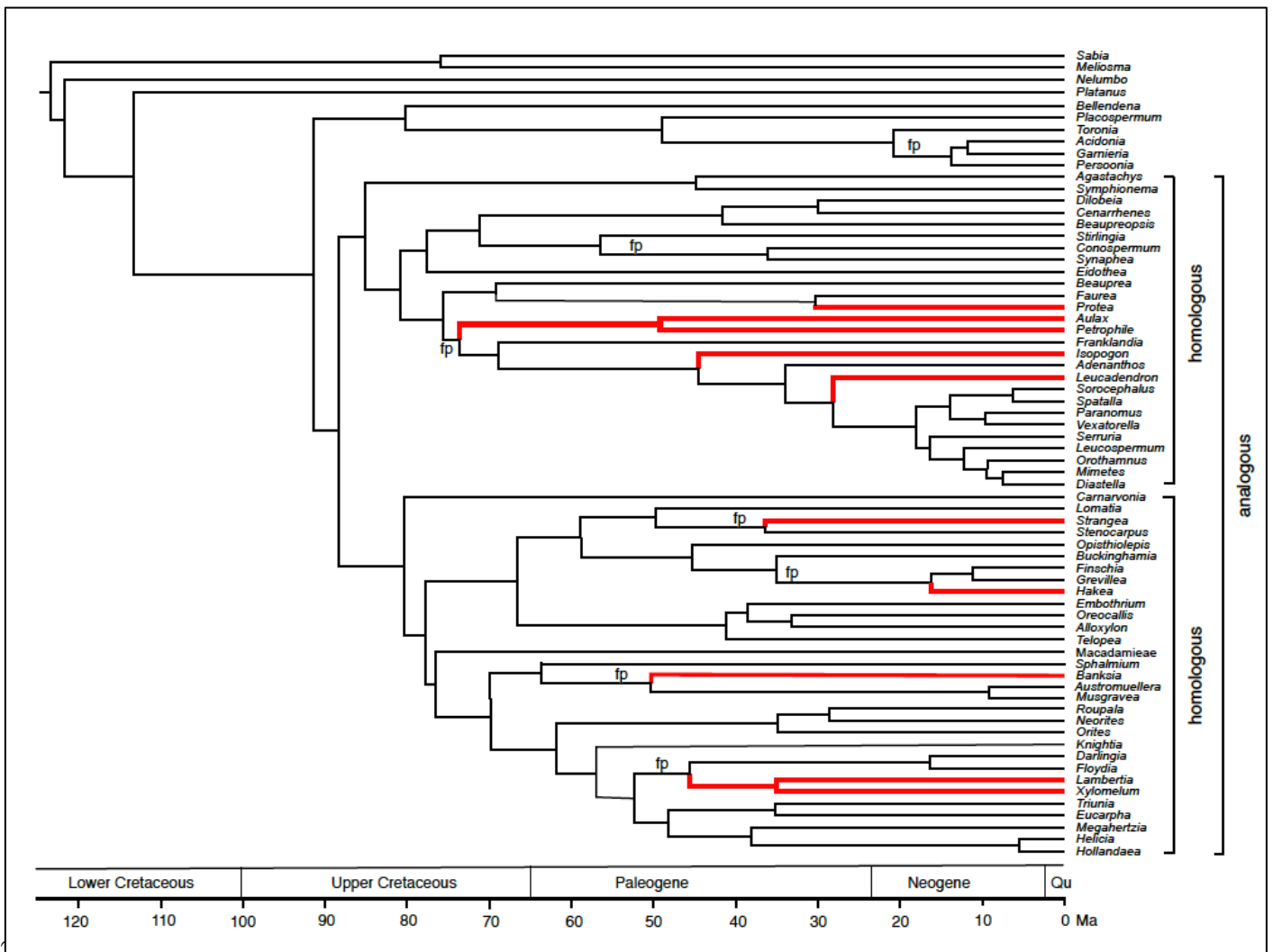


1258
 1259
 1260 Fig. 10. Evolutionary history of serotiny and nonserotiny in the world's most sclerophyllous
 1261 genus, *Hakea* (Proteaceae), in Australia based on ancestral trait assignment and molecular clock
 1262 techniques (the subclade that possesses only strong serotiny has been omitted from this analysis).
 1263 Arrows refer to the earliest evidence for the presence of certain traits or fire regimes. Note the few
 1264 species with intermediate-sized serotinous fruits (1–5 g) are not plotted separately but are
 1265 included in the total numbers under strong serotiny. Figure collated from Lamont et al. (2016a,b;
 1266 2017b).

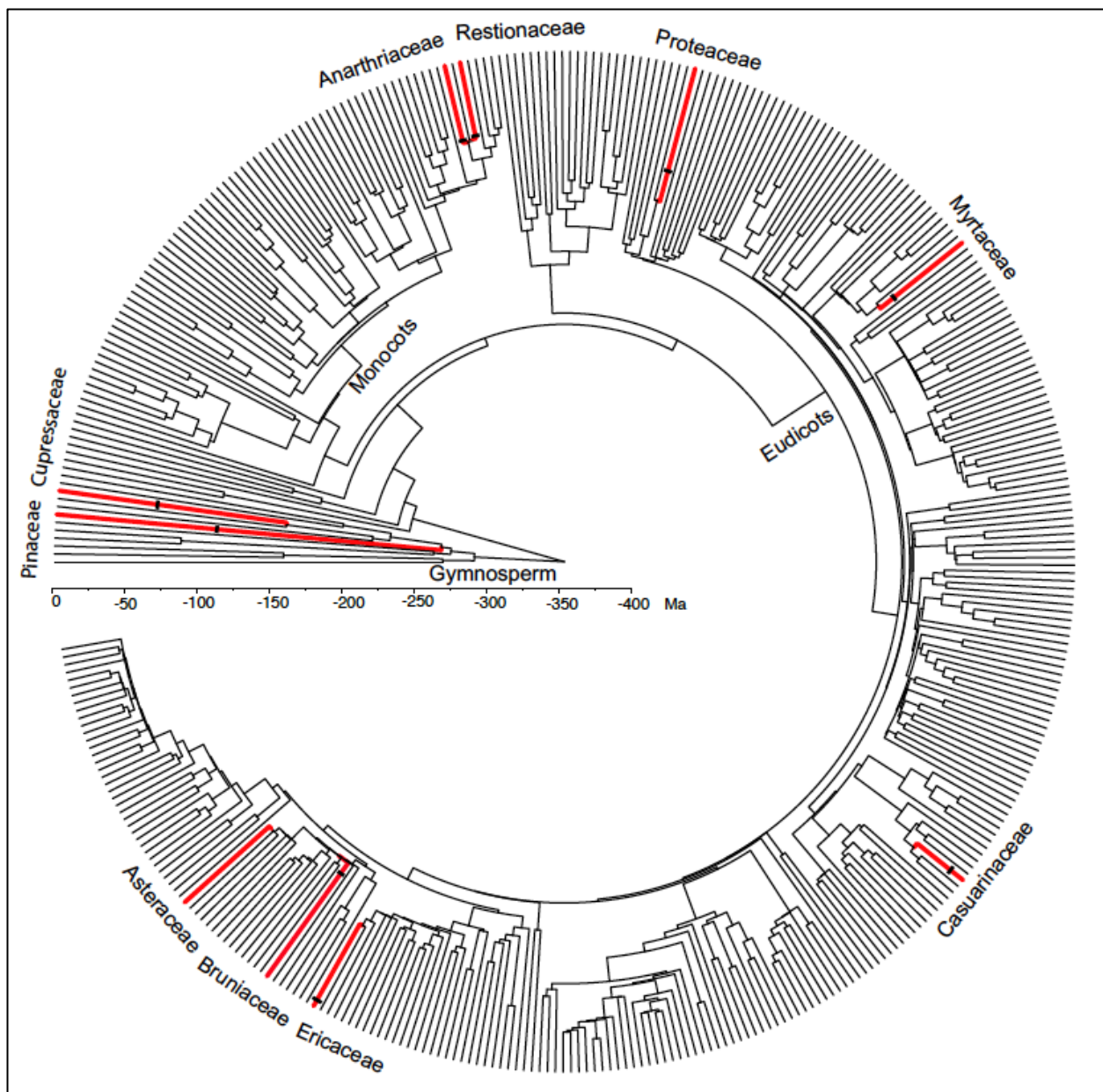


1267
1268

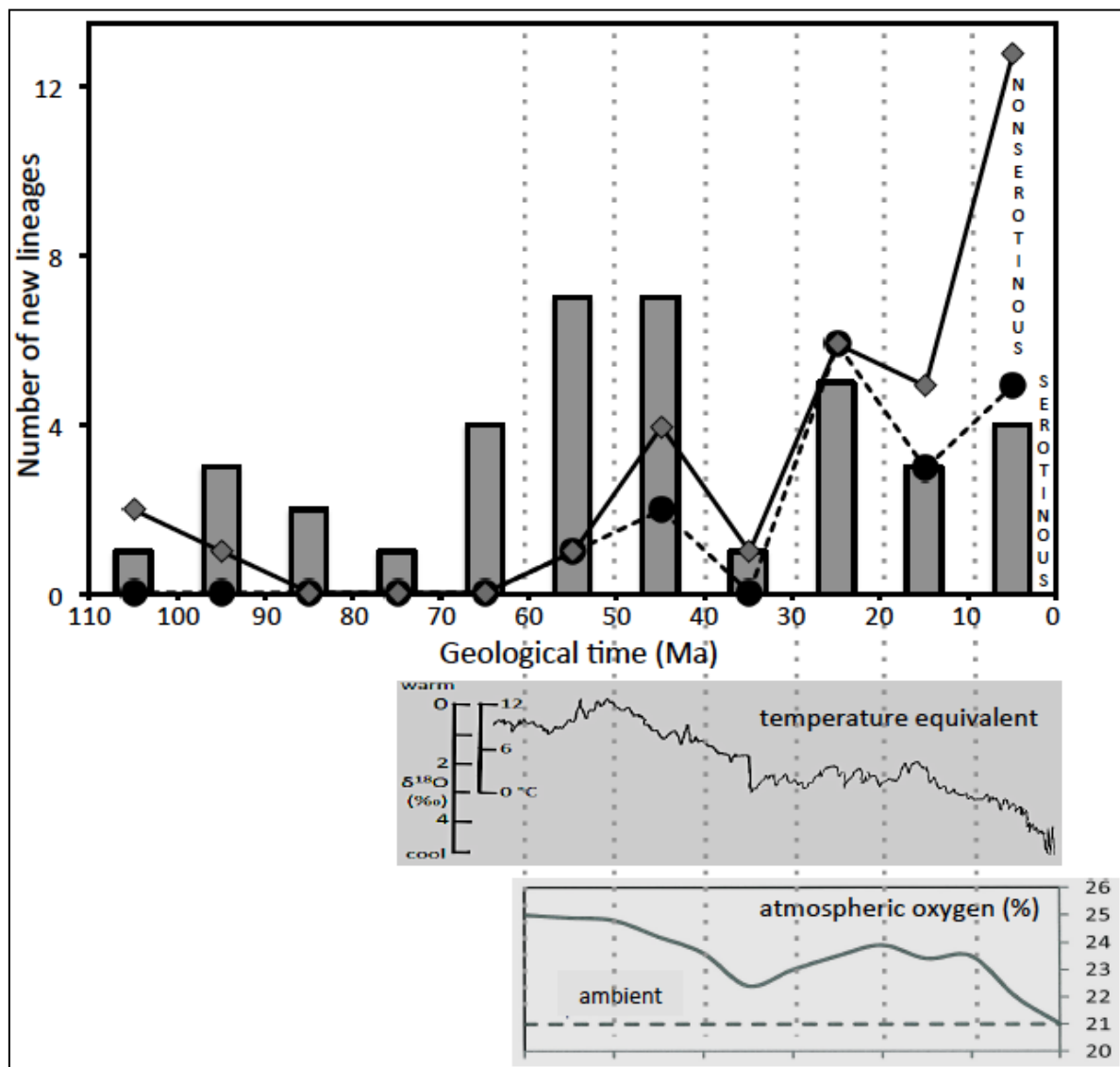
1269 Fig. 11. Net total diversification of serotiny over geological time for *Pinus* and *Protea*,
 1270 including the conversion of winged to wingless seeds among nonserotinous lineages in *Pinus*
 1271 and loss of serotiny among resprouters in *Protea*. Data obtained from chronograms presented in
 1272 He et al. (2012), Lamont, He and Downes (2013), Lamont, He and Pausas (2017a) and Lamont,
 1273 He and Yan (2019b).



1275 Fig. 12. Chronogram for the family Proteaceae showing the geological history of serotinous
 1276 lineages (in red) vs non-serotinous lineages. Note how each of the 10 serotinous lineages
 1277 commences in a fireprone (fp) environment but not all fp environments lead to serotiny.
 1278 Homology exists at the fruit level within subfamilies but not between them (analogy, homoplasy).
 1279 Adapted from Lamont and He (2017) and supplementary material in Lamont and He (2012).



1280
 1281
 1282 Fig. 13. Dated phylogeny for the world's seed-plant clades to which have been added lineages
 1283 possessing serotinous species at the rank of family – in red. The approximate time that the lineage
 1284 first displayed serotiny is indicated by a cross-bar. Note that in all cases the lineage would have
 1285 been fireprone before, or at least coincident with, the onset of serotiny (Lamont and He 2017).
 1286 *Sequoiadendron* is embedded in Cupressaceae at about 20 Ma though it could be up to 45 Ma
 1287 (Lowe, 2013/4). Backbone of the phylogeny was adapted from Zane et al. (2014).



1288
 1289 Fig. 14. Number of new lineages (bars) possessing serotinous cones/fruits (recorded using
 1290 Bayesian probability trait reconstruction techniques) arising at 10 million-year (Ma) intervals
 1291 since 110 Ma. Collated from data for 31 clades in the families Casuarinaceae, Cupressaceae,
 1292 Myrtaceae, Pinaceae and Restionaceae in the Supplementary Material, Lamont and He (2017).
 1293 Included are $\delta^{18}\text{O}$ values (as a surrogate for temperature, redrawn from Zachos, Dickens and
 1294 Zeebe, 2008) and estimated atmospheric O_2 values (from Bergman, Lenton and Watson, 2004).
 1295 Adapted from Lamont, He and Yan (2019a). Added are equivalent new data for the subfamily
 1296 Callitroideae, Cupressaceae showing total new lineages (diamonds) and those with serotiny (filled
 1297 circles) collated from supplementary data in Crisp et al. (2019). The difference between these two
 1298 values is the number of nonserotinous lineages.

1299 **Table 1.** Traits within the serotiny syndrome (seed storage, pyriscence, postfire recruitment) or nonserotiny syndrome (seed release at maturity, interfire
 1300 recruitment) and how these are affected by environmental and phylogenetic constraints, and whether the effect of the trait on each of the three
 1301 components is positive or negative, direct or indirect, with generic examples and supporting references.
 1302

Component (alternatives)	Trait subject to selection	Environmental constraint	Phylogenetic constraint	Effect on component	Generic examples	References
1. On-plant seed storage vs non-storage	Seed/fruit completely enclosed within a sealed supporting structure but has zone of weakness for enabling dehiscence	Growing conditions sufficient to ensure complete development of seed storage complex	Ability of surrounding structures to support and wrap around seed/fruit yet be dehiscent; propensity to produce enclosure sealants (resins) vs physical resistance limits of potentially flexing tissues	Direct	<i>Banksia</i>	Enright and Lamont, 1989; Huss et al., 2018, 2019
	Cone/fruit maintained in closed condition	Water and nutrient availability – rainfall, seasonal drought	Ability of vascular system to resist clogging, embolism	Direct	<i>Aulax, Hakea, Leucadendron</i>	Cramer and Midgley, 2009
	Decline in seed longevity matches rate of cone/fruit opening	Invasion by pathogens, granivores, rainwater, dry air	Propensity of enclosure to remain closed over time, inherent dormancy limits	Direct	<i>Eucalyptus, Melaleuca, Banksia</i>	Pannell and Myerscough, 1993; Lamont and Enright, 2000; Crawford et al., 2011; Fig. 1
	Insulation of seeds from heat (unrelated to fire)/cold – even if nonserotinous	Exposure to sunlight, hot/cold air currents, snow	Metabolic and anatomical properties of supporting structure	Indirect (insulation from the ‘elements’)	<i>Pinus, Banksia, Hakea</i>	Personal observations of fruits opening on sunny side of plant; see Table 3
	Fruit thick, woody, corky	Granivore pressure (ovipositing insects; parrots – cockatoos)	Metabolic and morphological properties of leaves (to supply carbohydrates) and supporting enclosure	Indirect (granivory)	<i>Hakea</i>	Groom and Lamont, 1997; Lamont et al., 2016a

	Cone scale complex thick, woody, spiny	Granivore pressure (crossbill corvids, squirrels)	Metabolic and morphological properties of leaves and supporting enclosure, propensity to develop spines	Indirect (granivory)	<i>Pinus</i>	Elliott, 1974; Moya et al., 2008
	Enclosure sealed off from atmosphere, water repellent	Exposure to water held in crevices, pathogens, dry air, air pollutants	Metabolic and anatomical properties of supporting enclosure	Indirect (waterlogging, pathogenesis, desiccation, pollutants)	<i>Banksia</i>	Lamont et al., 1991; Moya et al., 2008
	Accumulation by seed of nutrients vital for seedling recruitment in impoverished soils	Soil nutrient availability	Metabolic and vascular limits to supply nutrients to embryo over an extended period	Indirect*	<i>Hakea</i>	Lamont and Groom, 2013
	Propensity of cone to open at maturity (nonserotinous)	(Sub)tropical grassland/savanna, frequent fire, summer rainfall	Efficiency of dehiscence mechanism	Indirect (flame not reach crown)	<i>Banksia (dentata), Protea, Pinus, Larix, Hakea</i>	See Tables 4, 5, Fig. 6
	Propensity of cone to open at maturity	Habitat non-fireprone	Efficiency of dehiscence mechanism	Direct	<i>Banksia, Protea, Pinus, Hakea</i>	See Tables 4, 5
2. Pyriscence vs seed release at maturity	Fire-sourced heat able to stimulate operation of seed release mechanism directly or via death of supporting stem and thus supporting structure	Flammability of surrounding foliage and litter (fire of sufficient intensity)	Location of crown in relation to heat source (inherent plant growth rate), e.g., tree crown may escape heat from grass fires but prostrate plants will be burnt	Direct	<i>Banksia, Pinus, Eucalyptus</i>	Cowling and Lamont, 1985; Enright and Lamont, 1989; Habrouk, Retana and Espelta, 1999; Lamont and Enright, 2000, dos Santos et al. 2015

Insulation of seed from fire heat	Intensity of fires	Insulation and non-flammability properties of supporting tissues	Direct	<i>Pinus</i> , <i>Banksia</i> , leptospermoid Myrtaceae	Judd, 1994; Habrouk, Retana and Espelta, 1999; Lovreglio et al 2007; Moya et al., 2008; Salvatore et al; 2010; Lamont et al., 1994b
Tolerance of seed to fire heat	Intensity of fires	Heat-tolerant limits of dormant seed	Direct	<i>Calothamnus</i> , <i>Banksia</i> , <i>Hakea</i> , <i>Pinus</i> , <i>Dryandra</i> , <i>Allocasuarina</i> , <i>Eucalyptus</i> , <i>Melaleuca</i>	Habrouk, Retana and Espelta, 1999; Hanley and Lamont, 2000; Goubitz, Werger and Ne'eman, 2003; Lovreglio et al., 2007; Tangney et al., 2019
High melting point of binding resins (opening mechanism)	Intensity of fires	Propensity for terpenoid synthesis	Direct	<i>Banksia</i> , <i>Pinus</i>	Enright and Lamont, 1989; Tapias et al., 2001
Fruit/scale/bract reflexation (opening mechanism)	Intensity of fires	Tissue arrangement, secondary metabolism and anatomy relative to flexing requirements	Direct	<i>Banksia</i> , <i>Pinus</i>	Moya et al., 2008; Huss et al., 2018, 2019
Central plate pulls seeds out of enclosure (seed release mechanism)	Intensity of fires	Propensity to produce a central plate (decipium) that can grasp seeds and reflex to pull seed out of fruit	Direct	<i>Banksia</i> , <i>Dryandra</i>	Cowling and Lamont, 1985b
Wet-dry cycles required to ease seeds out of the supporting structure	Intensity of fires (redundant if flame temperature is high enough), postfire weather	Tissue arrangement, secondary metabolism and anatomy relative to flexing requirements	Direct	<i>Banksia</i> , <i>Dryandra</i>	Cowling and Lamont, 1985b; Lamont and Barker, 1988; Lamont and Enright, 2000

	Mantle of dead florets (high flammability)	Flame source	Ability to retard abscission layer development at base of florets	Direct	<i>Banksia</i>	Lamont and Cowling, 1984
	Dead leaf retention (high flammability)	Flame source	Ability to retard abscission layer development at base of leaves	Direct	<i>Banksia</i>	He, Lamont and Downes, 2011
	Dead branch retention (transports flames to crown)	Flame source	Ability to retain dead branches that serve to propagate flames	Direct	<i>Pinus</i>	Schwilk and Ackerly, 2001; He et al., 2012
	Heat not required to stimulate seed release mechanism (occurs at maturity or in response to other cues or gradual desiccation)	Interfire release (absence of fire)	Efficiency of dehiscence mechanism on reaching maturity	Direct	Species in otherwise serotinous genera can be nonserotinous	Lamont, He and Yan, 2019b
	Predispersal granivore avoidance	Interfire release (absence of fire)	Efficiency of dehiscence mechanism on reaching maturity	Direct	<i>Pinus</i>	Talluto and Benkman, 2013
3. Recruitment – postfire vs interfire	Heat-stimulated (predispersal) germination	Postfire release (fire occurrence)	Physiological limits of seeds to high-temperature tolerance	Direct	<i>Pinus, Allocasuarina</i>	Habrouk, Retana and Espelta, 1999; Hanley and Lamont, 2000; Lovreglio et al., 2007
	Postdispersal seed ash/charcoal/burial tolerance	Postfire release (fire occurrence)	Physiological/morphological limits of seeds re alkali/burial tolerance	Direct (minor)	<i>Banksia, Hakea, Pinus, Petrophile</i>	Lamont, Witkowski and Enright, 1993; Goubitz, Werger and Ne’eman, 2003
	Postdispersal seed tolerance of alkaline soil	Interfire release (absence of fire)	Physiological limits of seeds re alkali tolerance	Inverse (minor)	<i>Pinus</i>	Goubitz, Werger and Ne’eman, 2003
	Postdispersal seed high-temperature tolerance	Postfire release (fire occurrence)	Physiological limits of seeds re high temperature tolerance	Inverse (minor)	<i>Pinus</i>	Moya et al., 2013
	Postdispersal seed high-temperature tolerance	Interfire release (absence of fire)	Physiological limits of seeds re high temperature tolerance	Direct (minor)	<i>Pinus</i>	Moya et al., 2013

Smoke-stimulated germination	Fire occurrence	If released interfire, ability to survive soil storage and fire required	Direct (minor)	<i>Leucadendron</i>	Brown and Botha, 2004
Full-sun-tolerant seedlings	Postfire release (fire occurrence)	Drought/full-sun/heat tolerance of seedlings	Inverse	<i>Banksia,</i> <i>Hakea,</i> <i>Dryandra</i>	Causley et al., 2016
Drought/shade-tolerant seedlings	Interfire release (absence of fire)	Drought/shade tolerance of seedlings, e.g., via large seeds	Direct	<i>Banksia,</i> <i>Dryandra,</i> <i>Hakea, Pinus</i>	Hanley and Lamont, 2001
Postdispersal granivory minimization by synchronized seed release [#] , mimicry	Postfire release (fire occurrence)	Limit to number and size of seeds that can be produced to satiate granivores	Direct	<i>Banksia,</i> <i>Pinus</i>	Lamont et al., 1991; Saracino et al., 1997
Postdispersal herbivory minimization by synchronized seedling emergence [#]	Postfire release (fire occurrence)	Limit to number and size of seedlings that can be produced to satiate herbivores	Direct	<i>Banksia</i>	Lamont, Witkowski and Enright, 1993
Strong heterospecific-competition tolerance	Postfire release (fire occurrence)	Limit to number and size of seedlings that can be produced	Direct	<i>Banksia,</i> <i>Hakea,</i> <i>Petrophile</i>	Lamont, Witkowski and Enright, 1993
Strong conspecific-competition tolerance	Interfire release (absence of fire)	Limit to number and size of seedlings that can be produced	Direct	<i>Banksia,</i> <i>Dryandra,</i> <i>Hakea</i>	Hanley and Lamont, 2001

1303 *Needs strong root system for recruitment

1304 #Trait may be ineffective as burnt sites with abundant seeds and seedlings also attract granivores and herbivore

1305 **Table 2.** Three scenarios of varying fire regimes and contrasting interfire/postfire conditions
 1306 ,leading to three contrasting levels of serotiny through differential selection of the serotinous and
 1307 nonserotinous phenotypes. See Fig. 7 for supporting references.
 1308

Fire-related trait	Interfire events	Postfire events	Long-term outcome
Strong serotiny (moderate fire frequency, poor interfire recruitment conditions)	Minor nonserotinous seed release, little seedling establishment, recruits rare and their fecundity low, massive serotinous seed buildup (nonserotinous phenotypes selected against as they do not contribute to the next generation)	Fire-caused death of at least some parents and interfire recruits, <i>en masse</i> release of serotinous seeds and seedling establishment, extensive seedling/juvenile death but many recruits still reach adulthood (fire promotes selection of serotinous phenotypes)	Buildup of increasingly serotinous adults with negligible interfire recruitment (of less serotinous adults), with increasingly even-aged stands (unless resprouts) (serotinous phenotypes much fitter than nonserotinous phenotypes)
Weak serotiny (low/highly variable fire frequency, interfire recruitment conditions almost as good as postfire)	Continuous release of nonserotinous seeds with weak buildup of serotinous seed store, pulses of recruitment, with different age classes contributing most to population size, many recruits reach maturity as vegetation gaps available for colonization and possess seeds at time of fire (serotinous phenotypes selected against as do not recruit interfire)	Fire-caused death of at least some parents and interfire recruits, <i>en masse</i> release of both seed types and seedling establishment, extensive seedling/ juvenile death but many recruits still reach adulthood, more than interfire (fire promotes selection of both phenotypes)	Buildup of both serotinous and nonserotinous adults with interfire recruits contributing substantially to successive generations with increasingly multi-aged stands (including resprouts) (serotinous phenotypes only marginally fitter than nonserotinous phenotypes)
No serotiny (high fire frequency, interfire recruitment conditions as good as, or better than, postfire)	Nonserotinous seed release, recruits rare but quickly attain resprouting capacity, insufficient time and resources for serotinous seed buildup (serotinous phenotypes selected against as cannot recruit interfire)	Fire survival of parents and older recruits, or survival in non-fireprone pockets, no more seeds released than annually interfire, recruitment no more likely than interfire if say a dry year (fire does not promote selection of either phenotype)	Buildup of nonserotinous, resprouting adults with interfire recruits contributing most to successive generations with increasingly multi-aged stands (nonserotinous phenotypes fitter than serotinous phenotypes)

1309
1310

1311 **Table 3.** Mean effect of regional location (mesic vs xeric) and growing conditions (good vs
1312 poor) on plant size, fecundity, nutrient content, level of serotiny and fire-caused mortality
1313 among populations of two *Banksia* species in SW Australia and two *Pinus* species in Spain,
1314 both with Mediterranean-type climates. Statistical error terms are given in original papers. Note
1315 *Pinus pinaster* (on infertile siliceous substrates) and *P. halepensis* (mostly on more fertile
1316 calcareous substrates) are placed under poor and good growing conditions [sp(ecies) effect] to
1317 assist comparisons. NS: $P > 0.05$, **: $P = 0.001-0.01$, ***: $P < 0.001$. NS in bold highlights
1318 the lack of effect of growing conditions on the level of serotiny in contrast to regional effects.
1319 Data for banksias from Cowling and Lamont (1985a), Lamont et al. (1994a,b), Groom and
1320 Lamont (2011) and for pines from Hernández-Serrano et al. (2013), including their Table S2.
1321

Species	Attribute	Mesic sites, low crown fire frequency (surface fire)		Xeric sites, moderate crown fire frequency		Statistical tests		
		Poor	Good	Poor	Good	Site (S)	Growth (G)	S × G
	Growing conditions							
<i>Banksia menziesii</i>	Length growing season (months)	6.2	>6.2	4.2	>4.2	-	-	-
	Height (m)	4.2	4.8	2.9	3.6	***	**	NS
	Crown size (m ³)	14.6	35.4	7.8	20.0	**	***	NS
	Shoot N (mg/g)	4.6	8.0	5.1	10.9	NS	*	NS
	Shoot P (mg/g)	0.2	0.5	0.3	0.6	NS	**	NS
	Shoot K (mg/g)	2.6	5.4	3.5	7.6	**	**	NS
	Seeds retained (%)	16.8	38.0	53.8	63.9	***	***	NS
	Seeds stored / plant	6.4	22.7	54.3	202.2	***	***	NS
	Serotiny (100/b)	6.6	5.6	9.4	8.3	**	NS	NS
	Fire-caused mortality (%)	5.5	-	21.3	-	**	-	-
<i>Banksia hookeriana</i>	Height (m)	-	-	1.54	2.02	-	***	-
	Crown size (m ³)	-	-	2.92	6.83	-	***	-
	Seeds stored / plant	-	-	952	3483	-	***	-
	Serotiny (100/b)	-	-	18.3	19.2	-	NS	-
	Fire-caused mortality (%)	-	-	100 [#]	100 [#]	-	-	-
<i>Pinus pinaster</i> (infertile soils), <i>P. halepensis</i> (fertile soils)	Mean annual temperature (°C)	12.4	13.0	14.7	15.3	-	-	-
	DBH (cm)	31.5	28.2	25.8	27.5	NS	NS	NS
	Closed cones (%)	11.3	26.5	32.6	45.5	***	*** (sp)	*
	Serotiny (max. age closed cones, y)	3.47	3.87	8.27	6.73	***	*** (sp)	***
	Fire-caused mortality (%)	?? ^{\$}	?? ^{\$}	100 [#]	100 [#]	-	-	-

1322 # Observations at numerous sites

1323 \$ Surface fires do not reach the crown to cause death

1324 **Table 4.** Levels of serotiny associated with type of habitat-vegetation type, fire regime, relative interfire/postfire recruitment conditions and plant
 1325 lifespan, with specific examples to show the wide variation that may occur even in the same genus. Supporting references: Heinselman (1981),
 1326 Rebelo (2001), He, Lamont and Downes (2011), He et al. (2012), Lamont et al. (2017b), Lamont, He and Yan (2019b).

Habitat-vegetation type	Fire frequency (relative to plant lifespan)	Fire type	Interfire (I) recruitment conditions*	Postfire recruitment conditions	Plant lifespan	Serotiny	Examples
Rainforest, rock outcrop, desert, deciduous forest, wetlands, alpine	■ nil	not apply	variable	not apply	variable	■ nil	<i>Hakea clavata</i> , <i>Banksia integrifolia</i> , <i>Protea glabra</i> , <i>Pinus edulis</i> , <i>Larix decidua</i>
Wet/boreal/mixed forest, wetland margins, subalpine	■■ low	crown	good	good (> I)	long	■■ weak	<i>H. lasiantha</i> , <i>B. littoralis</i> , <i>Protea rubropilosa</i> , <i>Pinus serotina</i> , <i>L. gemelinii</i>
Dry forest, woodland, scrub, heath	■■■ low-moderate	crown	poor	good	variable	■■■ strong	<i>H. cucullata</i> , <i>B. serrata</i> , <i>Protea neriifolia</i> , <i>Pinus contorta</i>
Woodland, scrub, heath, savanna	■■■■ moderate	crown-surface	good	good (> I)	limited (not dominants)	■■ weak	<i>H. trifurcata</i> , <i>B. prionotes</i> , <i>Protea scabra</i> , <i>Pinus halepensis</i>
Savanna, (sub)tropical grassland with subshrub geoxyles	■■■■■ high	surface	variable	variable	long	■ nil	<i>H. lorea</i> , <i>B. dentata</i> , <i>Protea caffra</i> , <i>Pinus cubensis</i> , <i>L. occidentalis</i>

1327 The squares indicate in a semiquantitative way how the levels of serotiny rise and fall with increasing fire frequency.

1328 *as perceived by the species (see Fi

1329 **Table 5.** Number of serotinous species/total number of species in relation to fire response and fire regime, for five clades: *Pinus* (Pinaceae; He et al.
 1330 2012), *Banksia* (Proteaceae; He et al., 2011), Callitroideae (Cupressaceae; Ladd et al., 2013; Crisp et al., 2019), *Protea* (Proteaceae; Lamont et al., 2013,
 1331 2017a), and *Hakea* (Lamont et al., 2017b; Fig. 5). Clades are listed in increasing time since their origin of serotiny (in brackets).
 1332

Clade	Fire response	Fire regime		
		No fire	Surface fire	Crown fire
<i>Pinus</i> (113 Ma)	Fire-killed	0/165	0/0	17/17
	Fire-survivor	0/0	0/11	11/11
<i>Banksia</i> (62 Ma)	Fire-killed	0/0	0/0	43/45
	Fire-survivor	0/0	0/1	33/39
Callitroideae (58, 48 Ma)	Fire-killed	0/14	0/0	17/17
	Fire-survivor	0/0	0/3	2/2
<i>Protea</i> (28 Ma)	Fire-killed	0/0	0/0	51/51
	Fire-survivor	0/0	0/23	20/22
<i>Hakea</i> (20 Ma)	Fire-killed	0/0	0/2	41/44
	Fire-survivor	0/1*	0/2	31/33
Overall	Fire-killed	0/179	0/2	169/175
	Fire-survivor	0/1*	0/40	97/107

1333 *Lignotuberous

1334

1335 **Supplementary Material**

1336

1337 **Table S1.** Genera with serotinous seeds/fruits, including their geographic distribution, morphology of serotinous structures and seeds, number of
 1338 serotinous species of those examined and total in genus, their habitat and that of any species lacking serotiny, and supporting references. We accept the
 1339 view of *Udovicic and Spencer* (2012) on the taxonomy of Melaleuceae. Weak serotiny: at least some seeds held 1–4 y, moderate: 5–9 y, strong: 10+ y.
 1340 Observations build on those given in Table 1 of Lamont et al. (1991) with new genera indicated by *. NA = not apply.

1341

Family/ subfamily	Genus	Distribution	Species serotinous/ examined/total in genus	Serotinous structure (all release seeds/fruits in response to fire and, to a lesser extent, the passage of time)	Dispersal unit, non-dormant unless indicated	Habitat serotinous (all fireprone)	Non- serotinous species	Habitat non- serotinous (variably fireprone)	References
Cupressaceae ss	<i>Cupressus</i> ss	N Hemisphere	4/25 /25	Globular cone, 8–40 mm diameter, often warty with 4 scale complexes, and several seeds per scale	Weakly winged seeds (cones dehiscent)	Dry mountain forests	Yes,	Temperate, boreal forests or alpine uplands (non- fireprone)	Dallimore and Jackson 1966, Crisp et al. 2019
Cupressaceae ss	<i>Callitris</i> ss	Oceania, essentially Australia marginally to N Caledonia	13/16/16	Globular cone, 10–30 mm diameter, moderately serotinous	Weakly winged seeds (cones dehiscent)	Sclerophyll heath to thickets of <i>Callitris</i> small trees	Yes	Grassland savannas, desert	Crisp et al. 2019
Cupressaceae ss	<i>Actinostrobus</i>	SW Australia	3/3/3	Pyramidal cone, 15 mm long, with scale complexes and extra bracts, and a few seeds per scale, moderately serotinous	Weakly winged seeds (cones dehiscent)		No	NA	Crisp et al. 2019
Cupressaceae ss	<i>Widdringtonia</i>	S Africa	3/4/4	Globular cone, 20–30 mm diameter, moderately serotinous	Weakly winged seeds (cones dehiscent)	fynbos, grasslands	Yes	woodlands, grasslands, fire- protected microsites	Crisp et al. 2019
Cupressaceae ss	<i>Tetraclinis</i>	W Mediterranean Basin	1/1/1	Globular cone with 4 scale complexes, weakly serotinous	Weakly winged seeds (cones dehiscent)	Sclerophyll shrubland	No	NA	Dallimore and Jackson 1966
Pinaceae	<i>Pinus</i>	N Hemisphere	24/115/115?	Conic to ovoid cone, 30–600 mm long, with scores of scale complexes arranged in a spiral pattern decreasing in size towards the tip of the	Strongly apically winged seeds (cones dehiscent)	Mediterranean shrublands to forests,	Yes	Temperate, boreal forests or alpine uplands (non-	Table 6, He et al. 2012

				cone, sometimes with sharp appendages attached to the apophyses, weakly to strongly serotinous (the oldest recorded may be partly embedded in supporting branch)		temperate to subtropical woodlands and forests		fireprone) to or savanna woodlands (fireprone)	
Pinaceae	<i>Picea</i>	N America, N Europe	1/32/32	Pine-like, ovoid to cylindrical cone with spiralling loose scale complexes, weakly serotinous	Winged seeds (cones dehiscent)	Boreal forests	Yes (most)	Temperate, boreal forests	Safford 1974, He et al. 2012
Pinaceae	<i>Larix</i>	Temperate-cold zones of N Hemisphere	1/10/11	Cone with loose, petal-like, chartaceous scales varying greatly in size, with many seeds though often sterile, weakly serotinous. <i>L. gmelinii</i> is the only species to retain its cones after maturation	Winged seeds (cones dehiscent)	Temperate uplands to northern boreal lowlands	Yes (most)	Temperate, boreal forests or savanna woodlands	Table 3, He et al. 2012
Taxodiaceae ss	<i>Sequoiadendron</i>	California	1/1/1	Small, pine-like cone with thick apophyses, strongly serotinous (up to 20 years)	Lateral winged seeds (cones dehiscent)	Tall redwood forest in mountains	No	NA	https://en.wikipedia.org/wiki/Sequoiadendron_giganteum (6 Jan 2020)
Proteaceae/Grevillioideae	<i>Banksia</i> ss	Australia, marginally to Papua New Guinea	76/86/86	Scattered, woody, rounded follicles, bearing two winged seeds and central winged plate, surrounded by mantle of fibrous bracts/bracteoles/(and sometimes persistent florets) attached to rachis to form a 'cone' (Fig. 1), weakly to strongly serotinous	Apically winged seeds (dehiscent fruits)	Sclerophyll low heath to forest	Yes (rare, nonstored)	Wetland, rock outcrop, savanna	George 1981, He et al. 2011
Proteaceae/Grevillioideae	<i>Banksia</i> series <i>Dryandra</i>	SW Australia	48/50/94	Capitulum of thin, woody follicles, bearing two seeds and central winged plate, involucre bracts at base (and sometimes terminal foliage) wrap around fruits and are burnt off by fire, florets and bracts often deciduous, persistent style rarely modified into spine (<i>B. mimica</i>), weakly to strongly serotinous	Apically winged seeds (dehiscent fruits)	Sclerophyll low heath to forest	Yes (rare, nonstored)	Sclerophyll forest	B. Lamont, pers. observ.
Proteaceae/Grevillioideae	<i>Hakea</i>	Australia	92/102/172	Solitary, or sometimes loosely clustered, extremely woody, axillary follicles bearing two winged seeds, classifiable into three groups: cryptic fruits < 1 g within spiny foliage, tend to mimic leaves/stems, remain green and be weakly serotinous, and exposed fruits > 5 g on	Apically, rarely annular, winged seeds (dehiscent fruits)	Sclerophyll low heath to forest	Yes (rare, nonstored)	Wetland, rock outcrop, saline soils, savanna grasslands, sparsely vegetated desert sands	Lamont et al. 2016a,b, 2017b, P.K. Groom, pers. comm.

				stout stems that resist bird granivory, turn grey/brown and be strongly serotinous, or are intermediate between these two extremes (Fig. 1)					
Proteaceae/Grevill eoideae	<i>Strangea</i>	SW, E Australia	3/3/3	Solitary semiwoody follicle supporting one winged seed, weakly serotinous	Annular or bi- apically winged seeds (dehiscent fruits)	Sclerophyll wet/dry heath to open forest	No	NA	Hnatiuk 1995a
Proteaceae/Grevill eoideae	<i>Lambertia</i>	SW, E Australia	10/10/10	Solitary, woody, thin follicle supporting two flat seeds fitting into similar categories as for <i>Hakea</i> except all fruits < 1 g and tend to be cryptic, most are highly ornamented (Fig. 1), weakly serotinous	Narrowly winged or wingless flat seeds (dehiscent fruits)	Sclerophyll heath (mainly), mallee to forest	No	NA	Hnatiuk 1995b
Proteaceae/Grevill eoideae	<i>Xylomelum</i>	E, SW Australia	6/6/6	Solitary, extremely woody, pear-shaped follicle, 60–90 mm long, with velvety surface, bearing two winged seeds (Fig. 1), strongly serotinous	Apically winged seeds (dehiscent fruits)	Scrub-heath to dry sclerophyll forest	No	NA	Foreman 1995a
Proteaceae/Grevill eoideae	<i>Telopea</i> *	SE Australia	1/5/5	Scattered, elongated, leathery follicles, 1–8, containing up to 20 winged seeds, some of which may persist in open follicles into the second year	Apically winged seeds (dehiscent fruits)	Sclerophyll forest	Yes (all)	Heath to temperate rainforest	Crisp and Weston 1995, pers. observ.
Proteaceae/Proteoi deae	<i>Protea</i>	Africa, tropical to temperate	77/112/112	Capitulum of spindle-shaped achenes with persistent florets supported by tightly or loosely wrapped involucre of bracts (Fig. 1), weakly to moderately serotinous	Hairy-based achenes with persistent style sometimes burnt off (indehiscent fruits)	Sclerophyll low heath to tall shrubland	Yes (derived, widespre ad lineage, nonstored)	Savanna, (sub)tropical grassland	Lamont et al. 2013
Proteaceae/Proteoi deae	<i>Aulax</i>	S Africa	3/3/3	Semiwoody cupule with reduced racemes (variously empty, leaf-like bracteoles on rachises of vestigial cones) around a short central rachis (cone) supporting four or more achenes subtended by bracteoles	Hairy-based achenes with persistent style (indehiscent fruits)	Sclerophyll heath	No	NA	Rourke 1998, Lamont and He 2012

Proteaceae/Proteoidae	<i>Leucadendron</i>	S Africa	44/81/82	Solitary terminal cone of tightly packed scales (bracteoles) many subtending achenes, usually surrounded by a loose involucre of conspicuous, colorful bracts, weakly to moderately serotinous	Achenes either variously winged or wingless nutlets rarely retaining the parachute-like perianth (indehiscent)	Sclerophyll low heath to tall shrubland with emergent trees (<i>L. argenteum</i>)	Yes (common, soil-stored nutlets)	Sclerophyll low heath to tall shrubland	Williams 1972, Tonnabel et al. 2017,
Proteaceae/Proteoidae	<i>Petrophile</i>	Australia, mostly SWA	53/53/53	Solitary, rarely clustered, terminal or axillary cones of woody scales (bracteoles) each supporting compressed nuts with conspicuous tufts of hairs or wings (or sterile) wrapped loosely around a rachis, sometimes with involucre bracts at base (Fig. 1), weakly to moderately serotinous	Hairy or winged nuts (indehiscent fruits)	Sclerophyll low heath to forest	No	NA	Foreman 1995b
Proteaceae/Proteoidae	<i>Isopogon</i>	Australia, mostly SWA	35/35/35	Solitary, rarely clustered, terminal cones (drumsticks) of multiple spiralling woody scales (bracteoles) each supporting nuts with conspicuous tufts of hairs (or sterile) wrapped tightly around a rachis (Fig. 1), weakly to moderately serotinous	Hairy nuts (indehiscent fruits)	Sclerophyll low heath, wet/dry scrub-heath to mallee to forest	No	NA	Foreman 1995c, Pausas and Lamont 2018
Proteaceae/Proteoidae	<i>Conospermum</i> *	Australia, mostly SWA	2/53/53	Compound infructescence with swollen, moist branched peduncle whose tips engulf ovoid fruits in groups of three, moderately serotinous	Fruits with ring of hairs (indehiscent fruits)	Sclerophyll low heath to forest	Yes (most, geosporous)	Sclerophyll low heath to forest	Zhao and Ladd 2015
Casuarinaceae	<i>Allocasuarina</i>	Australia, half SWA	26/27/49 (E Australian spp not examined)	Solitary, woody, globular/cylindrical cones on short axillary peduncles, loosely clustered along branches, each bearing tightly clustered pairs of multiple spiralling valves (bracteoles, sometimes with sharp apices or appendages), subtended by an inconspicuous bract, almost all supporting single samaras, weakly to strongly serotinous (Fig. 1)	Samaras with hyaline, apical wings with midribs (indehiscent fruits)	Sclerophyll low heath to forest, sometimes forming thickets	No	NA	Grieve 1988, Wilson and Johnson 1989, Paczkowska and Chapman 2000
Lyginiaceae (Restionaceae)	<i>Lyginia</i> *	SW Australia	3/3/3	Terminal, compressed globose, woody, trilocular capsule with persistent style, surrounded by chartaceous bracts, laterally	Wingless rounded seed with spinules	Sclerophyll low heath to	No	NA	Meney and Pate 1999a, Briggs and Johnson 2000

				dehiscent with one seed per chamber, weakly serotinous	and medial flange (dehiscent fruits)	Banksia woodland			
Anarthriaceae (Restionaceae)	<i>Anarthria</i> *	SW Australia	7/7/7	Terminal or subterminal, globose, woody, trilocular capsule with persistent styles, surrounded by persistent chartaceous perianth, laterally dehiscent with one seed per chamber, weakly serotinous	Wingless rounded seed, < 1 mm diameter (dehiscent)	Wet/dry heath to sclerophyll woodland	No	NA	Meney and Pate 1999b, Briggs and Johnson 2000
Restionaceae	<i>Askidosperma</i> *	S Africa	1/1/	weakly serotinous	Nut, germination benefits from smoke	Sclerophyll low heath to scrub-heath	?		Brown, Jamieson and Botha 1994
Restionaceae	<i>Cannomois</i> *	S Africa	2/2/12	Short spike with six of so chitinous bracteoles subtended by inconspicuous bracts enclosing a single nut, weakly serotinous (Fig. 1)	Hard nut with aril (eliasome), germination may benefit from smoke	Sclerophyll low heath to scrub-heath	?		Brown, Jamieson and Botha 1994
Restionaceae	<i>Hypodiscus</i> *	S Africa	2/2	weakly serotinous	Nut, germination requirements unknown	Sclerophyll low heath to scrub-heath	?		Brown, Jamieson and Botha 1994
Restionaceae	<i>Willdenowia</i> *	S Africa	1/1	weakly serotinous	Nut, germination requirements unknown	Sclerophyll low heath to scrub-heath	?		Brown, Jamieson and Botha 1994
Myrtaceae/Leptospermoideae	<i>Eucalyptus</i> ss	Australia, marginally to New Guinea and SE Asia	399/403/~671 (SWA, Yalgoo, Coolgardie + few N-Central spp examined)	Solitary (large) to umbels with 3 to many (semi)woody globose, cup- to urn-shaped capsules, sessile (globular cluster) or pedicellate, with inserted or exerted valves and often ribbed, warty or other ornamentations on the hypanthial cup, with each of 3–8 chambers bearing 1 or more fertile seeds and many aborted seeds (Fig. 1), weakly to moderately serotinous	Angular to ellipsoid winged seeds (dehiscent fruits)	Sclerophyll heath to mallee to tall closed forest	Yes, poorly known (nonstore d)	Grassy savannas, isolated on bare uplands – single trunk with remote crown	Grieve 1980a (excluding <i>Corymbia</i> , including hybrids), Paczkowska and Chapman 2000, Euclid 2006
Myrtaceae/Leptospermoideae	<i>Corymbia</i> (<i>Eucalyptus</i> sl)*	Australia	7/14/~113 (SWA, Yalgoo, Coolgardie + few N-Central spp examined)	Clusters of urn-shaped, woody capsules with valves inserted below a distinct rim, with pedicels of varying lengths to form a flat-faced corymb, weakly to moderately serotinous	Flat, wingless, angular seeds (dehiscent fruits)	Sclerophyll woodland to tall forest	Yes, poorly recorded, common in N-	Grassy savannas, isolated on bare uplands – single trunk with remote crown	Grieve 1980a (<i>Corymbia</i> sunk in <i>Eucalyptus</i>), Paczkowska and

							Central Australia, Fig. 1 (nonstored)		Chapman 2000, Euclid 2006
Myrtaceae/Leptospermoideae	<i>Angophora (Eucalyptus sl)*</i>	E Australia	3/6/16	(Compound) umbels of wineglass-shaped, semiwoody capsules with persistent sepals, ribbed hypanthium and sometimes hispid indumentum, weakly serotinous	Flat, to ellipsoid winged seeds (dehiscent fruits)	mallee to sclerophyll forest	Yes, poorly recorded but appears common (nonstored)	Sclerophyll woodland to forest	Chippendale, 1988, Euclid 2006
Myrtaceae/Leptospermoideae	<i>Melaleuca</i> ss (excluding all other Melaleuceae listed here)	Australia, marginally to Lord Howe Isl, New Caledonia and Asia, as far W as Myanmar	177/177/~251 (only SWA spp + Yalgoo, Coolgardie regions examined)	Loose, cylindrical to tight, globular clusters of a few to scores of woody, cup- to urn-shaped capsules ~5 mm long, at first axillary, terminal or subterminal (rarely cauliflorous) then located at intervals along the bare supporting branches, hypanthium smooth rarely ribbed, valves inserted, 3-5 chambers with many seeds (Fig. 1), weakly to strongly serotinous	Tiny, elongated, angular seeds (dehiscent fruits) (Fig. 1)	Sclerophyll wet/dry heath to forest, often dominant small trees fringing water bodies	? (poorly recorded but must be common in N Australia, nonstored)	? Grassy savannas in N Australia	Grieve 1980b, Paczkowska and Chapman 2000
Myrtaceae/Leptospermoideae	<i>Agonis</i> , includes <i>Taxandria</i> and <i>Paragonis</i>	SW Australia	12/12/16	Axillary, semiglobular clusters of < 10 woody capsules, < 10 mm long, with deciduous bracteoles and 2-5 chambers with inserted valves, weakly serotinous	Wingless, angular seeds (dehiscent fruits)	Fringing swamp vegetation, scrub-heath to forest	No	NA	Grieve 1980c, Paczkowska and Chapman 2000; Wheeler and Marchant 2007
Myrtaceae/Leptospermoideae	<i>Beaufortia</i>	SW Australia	20/20/20	Tight, globular clusters of < 20 woody, cup-shaped capsules ~5 mm long, initially terminal or subterminal then located along the supporting woody branches, weakly to moderately serotinous	Wingless, angular seeds (dehiscent fruits)	Wet/dry low heath to scrub-heath	No	NA	Grieve 1980d, Paczkowska and Chapman 2000
Myrtaceae/Leptospermoideae	<i>Callistemon</i>	Australia, mainly E temperate,	50/51/51	Tight, cylindrical clusters of woody, cup-shaped capsules ~5 mm long, initially subterminal then located at intervals along the bare supporting	Tiny, elongated, angular seeds	Fringing swamp vegetation,	Possibly <i>C. nervosus</i>	Lignotuberous mallee-like in grassland savanna	Grieve 1980e, https://en.wikipedi

		marginally to N Caledonia		branches (Fig. 1), moderately to strongly serotinous	(dehiscent fruits) (Fig. 1)	scrub-heath to forest		with interfire recruits evident	a.org/wiki/Callistemon (4 Jan 2020)
Myrtaceae/ Leptospermoideae	<i>Kunzea</i>	Mainly SW Australia, marginally NZ	22/24/25	Subterminal, or terminal on short axillary branchlets, globular clusters of <10, semiwoody capsules, with thin deciduous bracts and bracteoles, sepals sometimes persistent, 2–5 chambers with numerous small seeds, weakly or nonserotinous	Tiny, wingless angular seeds (dehiscent fruits)	Fringing wetland vegetation to rock outcrops, scrub-heath	Yes	Non-fireprone vegetation in NZ	Burrell 1965, Grieve 1980f, Paczkowska and Chapman 2000
Myrtaceae/ Leptospermoideae	<i>Calothamnus</i>	SW Australia	45/45/45	Globose to cup-shaped capsules crowded in loose clusters on one side of branch at intervals, sometimes partly embedded in branches, with inserted valves, inflexed woody sepals, smooth or warty hypanthium, 3–5 chambers with numerous small seeds, moderately serotinous	Wingless, rounded seeds (dehiscent fruits)	Sclerophyll low heath to open forest	No	NA	Grieve 1980g, Paczkowska and Chapman 2000
Myrtaceae/ Leptospermoideae	<i>Leptospermum</i>	Australia, marginally to SE Asia, New Zealand	18/18/86 (only SWA ad NZ spp examined)	Solitary, semiwoody to woody, cup-shaped capsules, < 10 mm long, with 3–10 chambers with inserted valves and bearing numerous small seeds, <i>L. spinescens</i> corky (Fig. 1), weakly to moderately serotinous	Tiny, elongated, wingless, angular seeds (dehiscent fruits)	swamp vegetation sometimes forming thickets, scrub-heath to forest	Yes (nonserotinous spp and populations are known)	Alpine and other non-fireprone vegetation	Grieve 1980h, Paczkowska and Chapman 2000, Battersby et al. 2017
Myrtaceae/ Leptospermoideae	<i>Conothamnus</i>	SW Australia	3/3/3	Globular clusters of globose capsules < 5 mm long on bare branches, with remnants of involucre bracts in <i>C. trinervis</i> , weakly serotinous	Tiny, wingless, angular seeds (dehiscent fruits)	Wet/dry low heath to scrub-heath	No	NA	Grieve 1980i, Paczkowska and Chapman 2000
Myrtaceae/ Leptospermoideae	<i>Eremaea</i>	SW Australia	19/19/19	Solitary, woody, globose to cup-shaped capsules, < 10 mm long, sessile on old stems, sepals rarely retained, with 3–10 chambers with inserted or humped valves, and bearing numerous small seeds, weakly to moderately serotinous	Tiny, wingless, angular seeds (dehiscent fruits)	Sclerophyllous low heath to woodland	No	NA	Grieve 1980j, Paczkowska and Chapman 2000
Myrtaceae/ Leptospermoideae	<i>Phymatocarpos</i>	SW Australia	2/2/2	Globular to cylindrical clusters of < 15, globose capsules on bare branches with inserted valves, weakly to moderately serotinous	Tiny, wingless, angular seeds (dehiscent fruits)	Wet/dry heath	No	NA	Grieve 1980k, Paczkowska and Chapman 2000

Myrtaceae/ Leptospermoideae	<i>Regelia</i>	SW Australia	5/5/5	Globular clusters of 3–20, globose to cup-shaped capsules with inserted valves to three chambers with many seeds, weakly to moderately serotinous	Tiny, wingless, angular seeds (dehiscent fruits)	Scrub-heath	No	NA	Grieve 1980L, Paczkowska and Chapman 2000
Myrtaceae/ Leptospermoideae	<i>Lamarchea</i> *	SW Australia	2/2/2	Solitary, axillary, globular, woody capsule with inserted valves to two chambers with numerous seeds, weakly to moderately serotinous	Wingless, angular seeds (dehiscent fruits)	Emergent in sclerophyll scrub-heath	No	NA	Grieve 1980m, Paczkowska and Chapman 2000
Myrtaceae/ Leptospermoideae	<i>Tristania</i> (different sp assessed in Lamont et al. 1991)	E Australia	0/1/1	(Umbels of leathery capsules similar in form to <i>Angophora</i>)	Wingless, angular, linear seeds (dehiscent fruits)	NA	Yes	Edge of waterways in sclerophyll forest	http://www.flickr.com/photos/tony_rodd/549359766
Myrtaceae/ Leptospermoideae	<i>Lophostemon</i> *	E Australia, marginally to New Guinea	1/4/4	(Compound) umbels of wineglass-shaped, semiwoody capsules with deciduous sepals, weakly serotinous	Wingless, angular, linear seeds (dehiscent fruits)	Sclerophyll woodland to tall forest	Yes	Rainforest margins to sclerophyll forest	Wilson and Waterhouse 1982
Myrtaceae/ Leptospermoideae	<i>Xanthostemon</i>	N Australia to Malesia, mostly New Caledonia	0/24/51	(Cymes of semiwoody, globose capsules with persistent calyx)	Flat to angular, orbicular seeds (dehiscent fruits)	Savanna woodland	Yes (almost all)	Rainforest and creek margins to sclerophyll forest	Wilson 1990, B. Lamont, pers. observ. in New Caledonia
Myrtaceae/ Leptospermoideae	<i>Syncarpia</i> *	E Australia	2/2/3	Globular woody capsules fused at base to form compound fruit with persistent calyx and inserted valves with many seeds, weakly serotinous	Linear, angular seeds (dehiscent fruits)	Sclerophyll forest	?	Non-fireprone forest?	Bean 1995
Myrtaceae/ Leptospermoideae	<i>Tristaniopsis</i>	Australia, mostly SE Asia, New Caledonia	0/2/30	No serotinous species located	NA	NA	Yes (all?)	Edge of waterways in sclerophyll forest to rainforest	Wilson and Waterhouse 1982
Asteraceae	<i>Syncarpia</i> ss* (<i>Helipterum</i>)	Cape, S Africa	2/15/21	Capitulum of many cypselas with pappuses held in place by papery involucre bracts wrapped around them, reflexing on death of plant, usually from fire, weakly serotinous	Cypselas with a pappus of bristles varying from smooth to plumose and fused basally into a ring	Sclerophyll heath	yes	Sclerophyll heath	Bond 1985, Bergh, Haiden and Verboom 2015

Asteraceae	<i>Phaenocoma</i>	Cape, S Africa	1/1/1	Capitulum of many cypselas with pappuses held in place by papery involucre bracts wrapped around them, reflexing on death of plant, usually from fire, weakly serotinous	Cypselas with a pappus	Sclerophyll low heath	No	NA	Bond 1985
Bruniaceae	<i>Berzelia</i>	Cape, S Africa	13/13/16	Subglobular, few-fruited raceme of dry nutlets with red, fleshy sepals in some species to form a compound structure of berry-like fruits that gradually dry out to release nutlets	Single-seeded dry nutlets (indehiscent)	Sclerophyll low heath to scrub-heath	No?	?	Lamont et al. 1991, Classen-Bockhoff 2016
Bruniaceae	<i>Brunia</i>	Cape, S Africa	12/12/37	Globular, many-fruited raceme of dry nutlets (indehiscent) or woody capsules (dehiscent)	Wingless seeds or single-seeded nutlets	Sclerophyll low heath to scrub-heath	?	?	Lamont et al. 1991, Classen-Bockhoff 2016
Bruniaceae	<i>Audouinia</i>	Cape, S Africa	1/5?/5	Subglobular, few-fruited raceme of sclerified capsules that dehisce laterally to release seeds after fire	Wingless seeds (dehiscent)	Sclerophyll low heath to scrub-heath	Yes	Sclerophyll low heath to scrub-heath	Classen-Bockhoff 2016
Bruniaceae	<i>Staavia</i>	Cape, S Africa	3/3/11	Solitary, smooth, semiglobose, woody capsules (dehiscent)	Wingless seeds, arillate	Sclerophyll low heath to scrub-heath	?	Sclerophyll low heath to scrub-heath	Classen-Bockhoff 2016, B. Lamont observations from web images
Bruniaceae	<i>Thamnia</i>	Cape, S Africa	1/1/9	Solitary, smooth, semiglobose, woody capsules (dehiscent)	Wingless seeds	Sclerophyll low heath to scrub-heath	?	Sclerophyll low heath to scrub-heath	Classen-Bockhoff 2016, B. Lamont observations from web images
Ericaceae	<i>Erica</i>	Africa and Europe	1/859?/860	<i>E. sessiliflora</i> : subglobular, many-fruited spike of dry nutlets with red, fleshy sepals to form a compound structure of berry-like fruits at intervals along stem	Single-seeded dry nutlets (indehiscent)	Sclerophyll low heath to scrub-heath	Yes	Sclerophyll low heath to forest in Europe	Oliver and Oliver 2002

1342

1343 **References cited**

1344

- 1345 Battersby, P.F., Wilmshurst, J.M., Curran, T.J., McGlone, M.S. and Perry, G.L., 2017. Exploring fire adaptation in a land with little fire: serotiny in
1346 *Leptospermum scoparium* (Myrtaceae). *Journal of Biogeography*, 44(6), 1306-1318.
1347 Bean, A.R. (1995). A revision of *Syncarpia* Ten. (Myrtaceae). *Austrobaileya* 4:337-344.

- 1348 Bergh, N.G., Haiden, S.A. and Verboom, G.A., 2015. Molecular phylogeny of the ‘Cape snow’ genus *Syncarpha* (Asteraceae: Gnaphalieae) reveals a
1349 need for generic re-delimitation. *South African Journal of Botany*, 100, 219-227.
- 1350 Bond, W.J. (1985). Canopy-stored seed reserves (serotiny) in Cape Proteaceae. *South African Journal of Botany* 651, 181-186.
- 1351 Briggs, B. G. & Johnson, L. A. S. (2000). Hopkinsiaceae and Lyginiaceae, two new families of Poales in Western Australia, with revisions of *Hopkinsia*
1352 and *Lyginia*. *Telopea* 8, 477–502.
- 1353 Brown, N. A. C., Jamieson, H. & Botha, P. A. (1994). Stimulation of seed germination in South African species of Restionaceae by plant-derived smoke.
1354 *Plant Growth Regulation* 15, 93–100.
- 1355 Burrell, J. 1965: Ecology of *Leptospermum* in Otago. *New Zealand Journal of Botany* 3: 3-16.
- 1356 Claßen-Bockhoff R. (2016) *Bruniaceae*. In: Kadereit J., Bittrich V. (eds) *Flowering Plants. Eudicots. The Families and Genera of Vascular Plants*, vol
1357 14. Springer, Cham. pp. 108-115.
- 1358 Crisp, M.D., Cook, L.G., Bowman, D.M., Cosgrove, M., Isagi, Y. and Sakaguchi, S., 2019. Turnover of southern cypresses in the post-Gondwanan
1359 world: extinction, transoceanic dispersal, adaptation and rediversification. *New Phytologist*, 221(4), 2308-2319.
- 1360 Dallimore, W. and Jackson, A.B. (1966). *A Handbook of the Coniferae and Ginkgoaceae*. 4th Ed., revised by S.G. Harrison. St Martin’s Press, New
1361 York.
- 1362 dos Santos, P., Matias, H., Deus, E., Águas, A., & Silva, J. S. (2015). Fire effects on capsules and encapsulated seeds from *Eucalyptus globulus* in
1363 Portugal. *Plant ecology*, 216(12), 1611-1621.
- 1364 Euclid – Eucalypts of Australia. 2006. CSIRO, Canberra (online , 5 Jan 2020)
- 1365 Foreman, D.B. (1995a) 32. XYLOMELUM. *Flora of Australia* 16, 399-403.
- 1366 Foreman, D.B. (1995b) 10. PETROPHILE. *Flora of Australia* 16, 149-193.
- 1367 Foreman, D.B. (1995c) 11. ISOPOGON. *Flora of Australia* 16, 194-223.
- 1368 George, A.S. (1981). The genus *Banksia* L.f. (*Proteaceae*). 3, 239-473.
- 1369 Grieve, B.J. (1980a). How to Know Western Australian Wildflowers. Part 111A. Myrtaceae. *Eucalyptus*. University of WA Press. pp. 155-225.
- 1370 Grieve, B.J. (1980b). How to Know Western Australian Wildflowers. Part 111A. Myrtaceae. *Melaleuca*. University of WA Press. pp. 103-134.
- 1371 Grieve, B.J. (1980c). How to Know Western Australian Wildflowers. Part 111A. Myrtaceae. *Agonis*. University of WA Press. pp. 92-94.
- 1372 Grieve, B.J. (1980d). How to Know Western Australian Wildflowers. Part 111A. Myrtaceae. *Beaufortia*. University of WA Press. pp. 135-141.
- 1373 Grieve, B.J. (1980e). How to Know Western Australian Wildflowers. Part 111A. Myrtaceae. *Callistemon*. University of WA Press. pp. 101-102.
- 1374 Grieve, B.J. (1980f). How to Know Western Australian Wildflowers. Part 111A. Myrtaceae. *Kunzea*. University of WA Press. pp. 97-101.
- 1375 Grieve, B.J. (1980g). How to Know Western Australian Wildflowers. Part 111A. Myrtaceae. *Calothamnus*. University of WA Press. pp. 146-155.
- 1376 Grieve, B.J. (1980h). How to Know Western Australian Wildflowers. Part 111A. Myrtaceae. *Leptospermum*. University of WA Press. pp. 94-97.

- 1377 Grieve, B.J. (1980i). How to Know Western Australian Wildflowers. Part 111A. Myrtaceae. Conothamnus University of WA Press. pp. 134-135.
- 1378 Grieve, B.J. (1980j). How to Know Western Australian Wildflowers. Part 111A. Myrtaceae. Eremaea. University of WA Press. pp. 143-145.
- 1379 Grieve, B.J. (1980k). How to Know Western Australian Wildflowers. Part 111A. Myrtaceae. Phymatocarpus. University of WA Press. p. 141.
- 1380 Grieve, B.J. (1980L). How to Know Western Australian Wildflowers. Part 111A. Myrtaceae. Regelia. University of WA Press. pp. 141-143.
- 1381 Grieve, B.J. (1980m). How to Know Western Australian Wildflowers. Part 111A. Myrtaceae. Lamarchea. University of WA Press. p. 102.
- 1382 Grieve, B.J. (1988). How to Know Western Australian Wildflowers. Part 1. Dicotyledons. Casuarinaceae. University of WA Press. pp. 47-55.
- 1383 Hnatiuk, R.J. (1995a) 23. STRANGEA. Flora of Australia 16, 360-363.
- 1384 Hnatiuk, R.J. (1995b) 40. LAMBERTIA. Flora of Australia 16, 425-436.
- 1385 Lamont, B.B., Le Maitre, D. Cowling, R.M. and Enright, N.J. 1991. Canopy seed storage in woody plants. Botanical Review 57, 277-317.
- 1386 Meney, K.A. and Pate, J.S. (1999a). Australian Rushes. Lyginia. University of WA Press. pp. 400-405.
- 1387 Meney, K.A. and Pate, J.S. (1999b). Australian Rushes. Anarthria. University of WA Press. pp. 172-185.
- 1388 Oliver, E. and Oliver, I. (2002). The genus Erica (Ericaceae) in southern Africa: taxonomic notes 1. Bothalia, 32(1), 37-61.
- 1389 Paczkowska, G. and Chapman, A.R. (2000). The Western Australian Flora – a descriptive catalogue. Wildflower Society of Western Australia,
1390 Nedlands.
- 1391 Rourke, J.P. (1998) A review of the systematics and phylogeny of the African Proteaceae. Australian Journal of Botany 11, 267-285.
- 1392 Tierney, D. A., & Wardle, G. M. (2005). Differential seed ecology in the shrubs *Kunzea rupestris*, *K. capitata* and associated hybrids (Myrtaceae): the
1393 function of thin-walled fruit in a fire-prone vegetation. *Australian Journal of Botany*, 53(4), 313-321.
- 1394 Tonnabel, J., Schurr, F.M., Boucher, F., Thuiller, W., Renaud, J., Douzery, E.J. and Ronce, O., 2018. Life-history traits evolved jointly with climatic
1395 niche and disturbance regime in the genus *Leucadendron* (Proteaceae). The American Naturalist, 191(2), 220-234.
- 1396 Safford (1974) cited in Lamont et al. (1991)
- 1397 *Udovicic, Frank and Spencer, Roger David (2012). New combinations in *Callistemon* (Myrtaceae). *Muelleria*. 30 (1): 23–25.*
- 1398 Wheeler, J.R. and Marchant, N.G. (2007). A revision of the Western Australian genus *Agonis* (Myrtaceae) and two new segregate genera *Taxandria* and
1399 *Paragonis*. *Nuytsia* 16, 393-433.
- 1400 Williams, I.J. 1972. A revision of the genus *Leucadendron* (Proteaceae). Contributions of the Bolus Herbarium. Vol. 3.
- 1401 Wilson, K.L. and L.A.S.Johnson (1989) Casuarinaceae. In A.S. George (ed.) Flora of Australia 3, 100-174.
- 1402 Wilson, P.G. (1990). A revision of the genus *Xanthostemon* (Myrtaceae) in Australia. *Telopea* 3:451-476.
- 1403 Wilson, P.G. and Waterhouse, J.T. (1982). A review of the genus *Tristania* R.Br. (Myrtaceae): a heterogeneous assemblage of five genera. Australian
1404 Journal of Botany 30:413-446.

1405 Zhao, X. and Ladd, P.G., 2015. Seed germination and unusual serotiny in two species of *Conospermum* from fire-prone vegetation in Western Australia.
1406 Australian journal of botany, 62(6), 511-517.

1407 Table S2. Typical values used and results obtained in a model to show the effect of serotiny on
 1408 number of seeds stored per plant and gene support for serotiny available postfire over 10 y since
 1409 reaching maturity. Note the progressive build up of the gene support and seeds stored with
 1410 increasing retention of seeds with time. Thus, if some seeds were held for 6 y, the total gene
 1411 support would be 232 units (50 for the current crop) and seed store 413 (100 for current crop)
 1412 with a mean gene support for serotiny (S_6) of 0.605 per seed (0.500 initial crop).
 1413

Year	Seeds produced	Fraction of seeds retained	Viability of seeds retained	Progressive total gene support G ($S_1 = 0.5$)	Progressive seed store H	Mean gene support per seed S_x (G/H)
1 (current)	100	1.00	1.00	50	100	0.500
2	95	0.95	0.95	95	186	0.512
3	90	0.90	0.90	136	259	0.524
4	85	0.85	0.85	172	320	0.537
5	80	0.80	0.80	204	371	0.549
6	75	0.75	0.75	232	413	0.561
7	70	0.70	0.70	256	448	0.573
8	65	0.65	0.65	278	475	0.584
9	60	0.60	0.60	296	497	0.595
10	55	0.55	0.55	311	513	0.605

1414

Table S3. Number of new lineages/species per 5-million-year intervals that are either serotinous (S) or nonserotinous (N) for *Pinus* (Pinaceae – Northern Hemisphere), Callitroideae (Cupressaceae – Southern Hemisphere), *Protea* (Proteaceae – Africa) and *Hakea* (Proteaceae – Australia) based on Bayesian ancestral trait reconstruction techniques (Lamont, He and Yan 2019a). 0 to the left of all other variables means lineages with that trait yet to evolve in that interval while 0 among other values means there was no trait proliferation in that interval. – means the clade did not exist at that time. S means rate of proliferation of S > N, N means rate of proliferation of N > S, = mean rates are the same. Values within the table in bold are the highest rate recorded for that trait and clade. When a 10-My interval from a previous analysis was converted to a 5-My interval with the margins at X and (X + 1) this was given as the mean, (X + 0.5).

Clade	Trait	Million years ago at 5-million-y intervals												Source
		60-55	55-50	50-45	45-40	40-35	35-30	30-25	25-20	20-15	15-10	10-5	5-0	
<i>Pinus</i>	Serotinous	0	1	3	3	3	3	4	7	10	16	20	24	Fig. 10
	Nonserotinous	1	3	6	6	9	13	17	22	33	43	66	91	Fig. 10
		N	N	N	N	N	N	N	N	N	N	N	N	N
Callitroideae	Serotinous	0.5	1	1.5	2	1	0	4	6	4	3	4	5	Fig. 12
	Nonserotinous	0	0	1	2	1.5	1	0.5	0	1.5	2	5	8	Fig. 12
		S	S	S	=	N	N	S	S	S	S	N	N	
<i>Protea</i>	Serotinous	–	–	–	–	–	–	1	1	3	11	36	70	Fig. 10
	Nonserotinous	–	–	–	–	–	–	0	0	0	1	6	17	Fig. 10
		–	–	–	–	–	–	S	S	S	S	S	S	
<i>Hakea</i>	Serotinous - strong	–	–	–	–	–	–	–	1	2	18	15	4	Fig. 11
	Serotinous - weak	–	–	–	–	–	–	–	0	0	0	4	0	Fig. 11*
	Nonserotinous	–	–	–	–	–	–	–	0	0	1	4	1	Fig. 11*
		–	–	–	–	–	–	–	S	S	S	S	S	
Global	Serotinous	–	–	–	–	–	–	–	15	19	48	75	103	As above
	Nonserotinous	–	–	–	–	–	–	–	22	34.5	47	81	117	As above
		–	–	–	–	–	–	–	N	N	S	N	N	

* plus Lamont et al. (2017b)

Figures

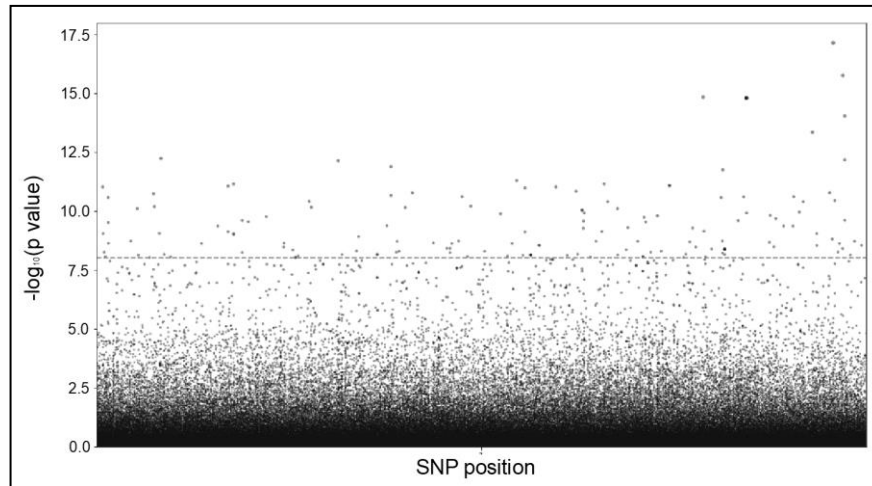


Fig. S1. Genome-wide association study showing the large number of single nucleotide polymorphisms (SNPs) associated with the level of serotiny in *Banksia attenuata*. The dotted line indicates the P -value threshold ($P = 2.62 \times 10^{-8}$, equivalent to $P = 0.010$ with Bonferroni correction for multiple tests). Leaves of this species were collected at nine locations along a rainfall gradient from the semi-arid region of Kalbarri to the high-rainfall *Cape Naturaliste* of SW Australia. He et al. (2016b, 2019) generated a genome-wide (SNP) profile. We determined the level of serotiny at each location by calculating the percentage of closed follicles per cone for two representative one-y-old cones from five plants per location. The level of serotiny varied from non- to weak serotiny (0–5% closed follicles) at the mesic sites with low frequency of crown fires to strong serotiny (>90% closed follicles) at the xeric sites with moderately frequent crown fires, consistent with a shorter gradient assessed by Cowling and Lamont (1985a) who used the slope measure of serotiny. Following a linear mixed model implemented in the software FaST-LMM (Lippert et al., 2011), a genome-wide association study analysis was used to determine what SNPs are associated with the level of serotiny.