










RESEARCH ARTICLE

High SARS-CoV-2 seroprevalence in health care workers but relatively low numbers of deaths in urban Malawi [version 1; peer review: awaiting peer review]

Marah G. Chibwana ^{1*}, Khuzwayo C. Jere ^{1,2*}, Raphael Kamng'ona¹, Jonathan Mandolo¹, Vincent Katunga-Phiri¹, Dumizulu Tembo¹, Ndaona Mitole¹, Samantha Musasa³, Simon Sichone¹, Agness Lakudzala¹, Lusako Sibale¹, Prisca Matambo¹, Innocent Kadwala¹, Rachel L. Byrne ⁴, Alice Mbewe¹, Marc Y. R. Henrion ^{1,4}, Ben Morton ^{1,4}, Chimota Phiri⁵, Jane Mallewa³, Henry C. Mwandumba^{1,4}, Emily R. Adams⁴, Stephen B. Gordon ^{1,4*}, Kondwani C. Jambo ^{1,4*}

¹Malawi-Liverpool-Wellcome Trust Clinical Research Programme, Blantyre, Malawi

²Centre for Global Vaccine Research, Institute of Infection, Veterinary Ecological Sciences, University of Liverpool, Liverpool, UK

³Department of Medicine, College of Medicine, University of Malawi, Blantyre, Malawi

⁴Liverpool School of Tropical Medicine, Liverpool, L3 5QA, UK

⁵Ministry of Health, Queen Elizabeth Central Hospital, Blantyre, Malawi

* Equal contributors

V1 First published: 25 Aug 2020, 5:199
<https://doi.org/10.12688/wellcomeopenres.16188.1>

Latest published: 25 Aug 2020, 5:199
<https://doi.org/10.12688/wellcomeopenres.16188.1>

Abstract

Background: In low-income countries, like Malawi, important public health measures including social distancing or a lockdown have been challenging to implement owing to socioeconomic constraints, leading to predictions that the COVID-19 pandemic would progress rapidly. However, due to limited capacity to test for severe acute respiratory syndrome coronavirus 2 (SARS-CoV-2) infection, there are no reliable estimates of the true burden of infection and death. We, therefore, conducted a SARS-CoV-2 serosurvey amongst health care workers (HCWs) in Blantyre city to estimate the cumulative incidence of SARS-CoV-2 infection in urban Malawi.

Methods: We recruited 500 otherwise asymptomatic HCWs from Blantyre City (Malawi) from 22nd May 2020 to 19th June 2020 and serum samples were collected from all participants. A commercial ELISA was used to measure SARS-CoV-2 IgG antibodies in serum.

Results: A total of 84 participants tested positive for SARS-CoV-2 antibodies. The HCWs with positive SARS-CoV-2 antibody results came from different parts of the city. The adjusted seroprevalence of SARS-CoV-2 antibodies was 12.3% [CI 8.2 - 16.5]. Using age-stratified

Open Peer Review

Reviewer Status AWAITING PEER REVIEW

Any reports and responses or comments on the article can be found at the end of the article.

infection fatality estimates reported from elsewhere, we found that at the observed adjusted seroprevalence, the number of predicted deaths was eight times the number of reported deaths.

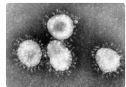
Conclusions: The high seroprevalence of SARS-CoV-2 antibodies among HCWs and the discrepancy in the predicted versus reported deaths suggests that there was early exposure but slow progression of COVID-19 epidemic in urban Malawi. This highlights the urgent need for development of locally parameterised mathematical models to more accurately predict the trajectory of the epidemic in sub-Saharan Africa for better evidence-based policy decisions and public health response planning.

Keywords

SARS-CoV-2, COVID-19, Malawi, Seroprevalence, IgG



This article is included in the [Malawi-Liverpool Wellcome Trust Clinical Research Programme gateway](#).



This article is included in the [Coronavirus \(COVID-19\)](#) collection.

Corresponding author: Kondwani C. Jambo (Kondwani.jambo@lstmed.ac.uk)

Author roles: **Chibwana MG:** Conceptualization, Data Curation, Formal Analysis, Funding Acquisition, Investigation, Methodology, Project Administration, Supervision, Writing – Original Draft Preparation, Writing – Review & Editing; **Jere KC:** Conceptualization, Data Curation, Formal Analysis, Funding Acquisition, Investigation, Methodology, Project Administration, Supervision, Writing – Original Draft Preparation, Writing – Review & Editing; **Kamng'ona R:** Investigation, Methodology, Project Administration, Writing – Original Draft Preparation, Writing – Review & Editing; **Mandolo J:** Formal Analysis, Investigation, Methodology, Writing – Original Draft Preparation, Writing – Review & Editing; **Katunga-Phiri V:** Data Curation, Methodology, Writing – Original Draft Preparation, Writing – Review & Editing; **Tembo D:** Investigation, Methodology, Supervision, Validation, Writing – Original Draft Preparation, Writing – Review & Editing; **Mitole N:** Investigation, Project Administration, Writing – Original Draft Preparation, Writing – Review & Editing; **Musasa S:** Investigation, Methodology, Supervision, Writing – Original Draft Preparation, Writing – Review & Editing; **Sichone S:** Investigation, Writing – Original Draft Preparation, Writing – Review & Editing; **Lakudzala A:** Investigation, Writing – Original Draft Preparation, Writing – Review & Editing; **Sibale L:** Investigation, Writing – Original Draft Preparation, Writing – Review & Editing; **Matambo P:** Investigation, Writing – Original Draft Preparation, Writing – Review & Editing; **Kadwala I:** Investigation, Writing – Original Draft Preparation, Writing – Review & Editing; **Byrne RL:** Resources, Writing – Original Draft Preparation, Writing – Review & Editing; **Mbewe A:** Conceptualization, Funding Acquisition, Methodology, Resources, Writing – Original Draft Preparation, Writing – Review & Editing; **Henrion MYR:** Data Curation, Formal Analysis, Writing – Review & Editing; **Morton B:** Conceptualization, Writing – Original Draft Preparation, Writing – Review & Editing; **Phiri C:** Conceptualization, Writing – Original Draft Preparation, Writing – Review & Editing; **Mallewa J:** Conceptualization, Writing – Original Draft Preparation, Writing – Review & Editing; **Mwandumba HC:** Conceptualization, Investigation, Methodology, Writing – Original Draft Preparation, Writing – Review & Editing; **Adams ER:** Methodology, Resources, Writing – Original Draft Preparation, Writing – Review & Editing; **Gordon SB:** Conceptualization, Funding Acquisition, Investigation, Methodology, Resources, Writing – Original Draft Preparation, Writing – Review & Editing; **Jambo KC:** Conceptualization, Data Curation, Formal Analysis, Funding Acquisition, Investigation, Methodology, Project Administration, Resources, Supervision, Validation, Visualization, Writing – Original Draft Preparation, Writing – Review & Editing

Competing interests: E.R.A. and R.L.B. worked with Mologic (UK) to independently validate the SARS-CoV-2 ELISA at the Liverpool School of Tropical Medicine (LSTM). All other authors report no potential conflicts.

Grant information: This work was funded by the Wellcome Trust through a Wellcome Training Fellowship [201945; to K.C.]; the Wellcome Trust/DFID Joint Initiative for Research in Epidemic Preparedness and Response [220764; to E.R.A.]; and the Malawi-Liverpool-Wellcome Trust Clinical Research Programme [MLW] was supported by a strategic award from the Wellcome Trust awarded to S.B.G. K.C.J was also supported by the NIHR and MRC through grant numbers 3477609 and MR/T008822/1, respectively. M.G.C. is supported by NIH through grant number U01AI131348. E.R.A is also supported by the NIHR HPRU [200907] in Emerging and Zoonotic Infection. Disclaimer: The funders had no role in the study design, data collection and interpretation, or the decision to submit the work for publication. Mologic (UK) was provided the opportunity to review a preliminary version of this manuscript for factual accuracy but the authors are solely responsible for final content and interpretation. The authors received no financial support or other form of compensation related to the development of the manuscript. The findings and conclusions in this report are those of the authors. *The funders had no role in study design, data collection and analysis, decision to publish, or preparation of the manuscript.*

Copyright: © 2020 Chibwana MG *et al.* This is an open access article distributed under the terms of the [Creative Commons Attribution License](https://creativecommons.org/licenses/by/4.0/), which permits unrestricted use, distribution, and reproduction in any medium, provided the original work is properly cited.

How to cite this article: Chibwana MG, Jere KC, Kamng'ona R *et al.* **High SARS-CoV-2 seroprevalence in health care workers but relatively low numbers of deaths in urban Malawi [version 1; peer review: awaiting peer review]** Wellcome Open Research 2020, 5 :199 <https://doi.org/10.12688/wellcomeopenres.16188.1>

First published: 25 Aug 2020, 5:199 <https://doi.org/10.12688/wellcomeopenres.16188.1>

Introduction

Coronavirus disease 2019 (COVID-19) has had a dramatic impact worldwide, with high mortality in Asia, Europe and the Americas¹. Africa reported its first COVID-19 case on 14th February 2020². Due to poor socio-economic conditions, high HIV prevalence, an increase in non-communicable diseases and challenged health system infrastructure, it was predicted that the African pandemic would progress rapidly. As of 16th July 2020, however, the number of COVID-19 cases was 665,522 and deaths 14,434^{1,2}, much lower than predicted by mathematical models³.

In low-income countries, like Malawi, important public health measures like social distancing or a lockdown are difficult to implement owing to socioeconomic constraints. Furthermore, the limited capacity to test for severe acute respiratory syndrome coronavirus 2 (SARS-CoV-2) infection impedes effective public health response planning. Initial testing in Malawi focused on case identification in patients with COVID-19-like symptoms, contacts of index patients and inbound travellers. The first COVID-19 case in Malawi was reported on 2nd April and as of 16th July 2020 there were 2716 cases with only 51 deaths reported^{2,4}. Given the sampling strategy, the true burden is certainly much greater than the reported cases, but there are no reliable estimates of the true burden of infection and death. Up to now, health services have reported only small number of cases and have not been overwhelmed as predicted³.

The unrestricted nature of the COVID-19 epidemic in Malawi provides an opportunity to compare its trajectory in a low-income setting with what has been reported in high income settings. It has been shown that the rate of asymptomatic SARS-CoV-2 infection among health care workers (HCWs) reflects general community transmission rather than in-hospital exposure⁵. We, therefore, conducted a SARS-CoV-2 serosurvey amongst HCWs in Blantyre city to estimate the cumulative incidence of SARS-CoV-2 infection in urban Malawi.

Methods

Ethical statement

Ethical approval was provided by the College of Medicine Research and Ethics Committee (COMREC, Malawi) (P.05/20/3045) and Liverpool School of Tropical Medicine (LSTM, UK) (20-043). All participants gave informed written consent for participation in the study, publication of the data and storage/usage of collected samples.

Study setting and participants

Participant recruitment was done at the Malawi-Liverpool-Wellcome Trust Clinical Research programme (MLW) in Blantyre, Malawi, as part of an ongoing longitudinal study that seeks to investigate markers of SARS-CoV-2 exposure and immunological protection in Malawian adults. The study site is within the compound of the Queen Elizabeth Central Hospital (QECH), the largest tertiary teaching hospital in Malawi. It is easily accessible from most parts of the city. Participants were HCWs from Blantyre City, both clinical and non-clinical. We used a convenience sampling approach, whereby the study

was advertised electronically and by word of mouth. The sample size was calculated based on the study primary objective, which was to compare the SARS CoV-2 neutralising antibody titers in recovered COVID-19 patients compared to SARS CoV-2 antibody positive (asymptomatic/mild) individuals. Inclusion criteria for the study included being an HCW resident in Blantyre, aged between 18 and 65 years old, and otherwise asymptomatic. The exclusion criterion was withholding consent. Electronic case report forms (eCRFs) were used to collect demographic data including age, gender, place of residence, common mode of transportation, occupation and involvement in COVID-19 work. The samples used for this manuscript are from the baseline recruitment arm of the asymptomatic group in the main study.

Sample collection, processing and experimental setup

Peripheral blood (10ml), 7ml in Sodium Heparin tubes and 3ml in serum separation tubes (SST) (All BD Biosciences), was collected from all study participants using venesection by the study clinical team at the study site (MLW) between 22nd May 2020 and 19th June 2020. Serum was collected from the SSTs by centrifugation at 500g for 8 mins and stored at -80°C. To measure SARS-CoV-2 antibodies, we used a commercial enzyme linked-immunosorbent assay (ELISA) targeting Spike (S2) and Nucleoprotein (N) from SARS-CoV-2 (Omega diagnostics, UK; ODL 150/10; Lot #103183). The assay was performed as per the manufacturer's instructions. In brief, participant serum was diluted (1:200) in sample diluent (150mM Tris-buffered saline, pH 7.2 with antimicrobial agent). The diluted samples, diluent alone (negative control), manufacturer's cut-off control and positive control were added at 100µl per well. The plate was incubated at room temperature for 30 mins. After incubation, the plate was washed three times with wash buffer (100mM Tris-buffered saline with detergent, pH 7.2) using a plate washer (Asys Atlantis, Biochrom Ltd, UK). Human IgG conjugated to horseradish peroxidase was then added to each well at 100µl and incubated for 30 minutes at room temperature. After incubation, the plate was washed four times with wash buffer, and 100µl of TMB (3,3',5,5'-Tetramethylbenzidine) Substrate (aqueous solution of TMB and hydrogen peroxide) was added. The plate was incubated for 10 minutes at room temperature, before addition of 100µl of Stop Solution (0.25M sulphuric acid). The optical density (OD) of each well was read at 450nm in a microplate reader (BioTek ELx808, UK) within 10 minutes. The assay interpretation was as follows; positive result (OD 0.6), indeterminate result (OD 0.55 to < 0.6) and negative (OD < 0.55) This assay has undergone rigorous independent validation at the Liverpool School of Tropical Medicine (UK) and St George's University of London (UK)⁶.

Statistical analysis

Graphical presentation was performed using GraphPad Prism 8 (GraphPad Software, USA). To integrate uncertainty arising from test sensitivity and specificity, we used a method published by Reiczigel *et al.*, 2010⁷. The geospatial data was plotted in R (v4.0.0) using ggmap (v3.0.0)⁸ and ggplot2 (v3.3.1)⁹.

Results

Demographics of study participants

We recruited 500 asymptomatic HCWs with a median age of 31 (range 20–64 years)¹⁰. The average household size for the participants was four [confidence interval (CI) 3–5]. Of the 500, 331 were clinical HCWs and 169 non-clinical HCWs (Table 1). The clinical HCWs included nurses, medical doctors and clinical officers, while the non-clinical HCWs included clerical/administration, field workers and laboratory scientists. The primary workstation for the HCWs included primary healthcare facilities (35/500), secondary healthcare facilities (291/500), and clinical research facilities (174/500). The majority of the participants were nurses (57%), 41% of all participants were involved in clinical work related to COVID-19 and 73% of the total participants used public transport or walking as their main means of transport. The main characteristics of the participants are summarised in Table 1.

Table 1. Study participant demographics.

Characteristics	Number of participants	Proportion
Gender		
Male	236	47%
Female	264	53%
Age		
20–29	209	42%
30–39	170	34%
40–49	86	17%
50–59	28	6%
60+	7	1%
Occupation		
Clinical HCW	331	66%
Non-clinical HCW	169	34%
COVID-19 work		
Clinical	205	41%
Non-clinical	43	9%
None	252	50%
Transport		
Public + walking	363	73%
Private	137	27%

COVID-19, coronavirus diseases 2019; HCW, health care workers.

Seroprevalence of SARS CoV-2 antibodies and geospatial location of the antibody positive individuals

84 participants tested positive for SARS-CoV-2 antibodies (Figure 1). After adjusting for test sensitivity and specificity^{6,7}, the overall seroprevalence of SARS-CoV-2 antibodies was 12.3% [CI 8.2 - 16.5]. This suggests that local transmission was high and that SARS-CoV-2 may have been circulating for some time in Blantyre City.

To estimate the potential geographical spread of SARS-CoV-2, we plotted the geographical coordinates of place of residence for the individuals with a positive antibody result on the map of Blantyre City. We found that the HCWs with a positive SARS-CoV-2 antibody result came from different parts of the city (Figure 2). This suggests that SARS-CoV-2 local transmission was likely widespread across the city.

Crude projections of mortality based on seroprevalence estimates

Using estimates of infection fatality rates from Verity *et al.*¹¹ and the Malawi population census¹², we estimated the number of deaths that could have occurred at the observed seroprevalence of SARS-CoV-2 antibodies (Table 2). We adjusted the population estimates by inflating them to take into account population annual population growth rate of 2% from 2018 to 2020¹². We assumed that there was a uniform risk of infection at all age groups and that the seroprevalence was similar to the general population.

The crude estimates suggest that there should have been at least 138 deaths by 19th June 2020. However, four weeks following the serosurvey, only 17 COVID-confirmed deaths in Blantyre have been reported by the Public Health Institute of Malawi⁴, which is approximately eight times below the predicted deaths. When the seroprevalence is extrapolated to the entire Malawi, it predicts approximately 5,295 COVID-19 deaths, but only 51 deaths have been reported as of 16th July 2020. These crude estimates highlight a discrepancy between the predicted deaths using infection fatality rates from elsewhere and the actual number of reported COVID-19 deaths in Malawi.

Conclusions

To our knowledge, this seroprevalence study is the first to report estimates of SARS-CoV-2 exposure among HCWs in an African urban low-income setting. It provides insights into the potentially unique trajectory of the COVID-19 epidemic in sub-Saharan Africa (SSA), using data from urban Malawi. We observe a high seroprevalence of SARS-CoV-2 antibodies amongst HCWs. It has been reported elsewhere that HCWs accounted for a high proportion of cases early in the SARS-CoV-2 outbreak when transmission was increasing sharply and personal protective equipment (PPE) provision was patchy^{13–15}. Our data could suggest that Malawi is relatively early in the epidemic and that COVID-19 cases are likely to continue

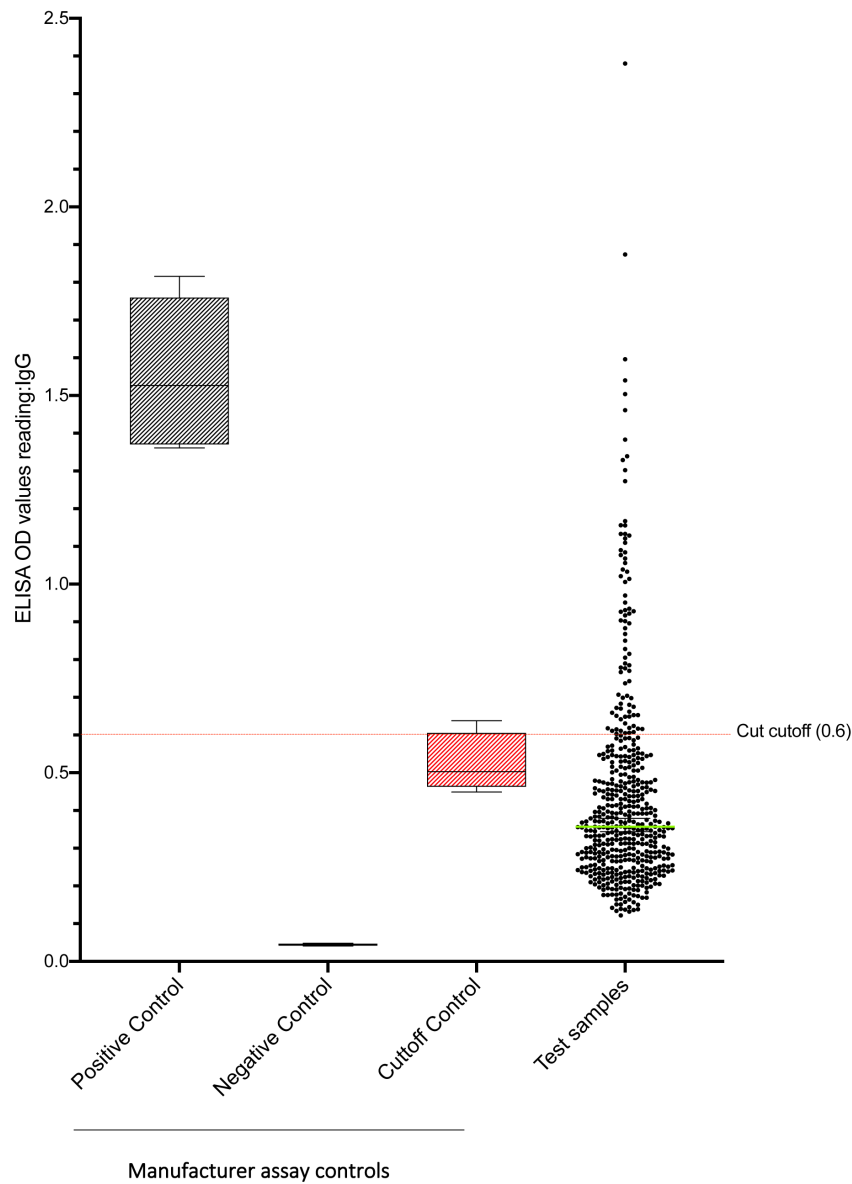


Figure 1. SARS-CoV-2 serological results from asymptomatic health care workers. We used a commercial ELISA to measure SARS-CoV-2 antibodies against Spike (S2) and Nucleoprotein (N). OD, optical density.

to rise sharply in the coming weeks, but the serology also suggests that large numbers of cases must be either asymptomatic or only show mild disease.

The discrepancy between the predicted compared to reported mortality at the observed seroprevalence estimate may also suggest that there are large numbers of underreported or misclassified deaths in Malawi. However, even in countries like South Africa with relatively abundant testing capacity and strong health systems, there is relatively low mortality with a case fatality

ratio of 1.5¹⁶. This may imply that the impact of SARS-CoV-2 in Africa is potentially much less severe or is following a different trajectory than that experienced in China, Americas and Europe, where case fatality ratios were commonly above five¹. This warrants further investigation.

However, the reasons behind the discrepancy in the COVID-19 pandemic trajectory between SSA and elsewhere might include population demography, climate and prior cross-reactive immunity¹⁷. In Malawi, for example, the population is younger

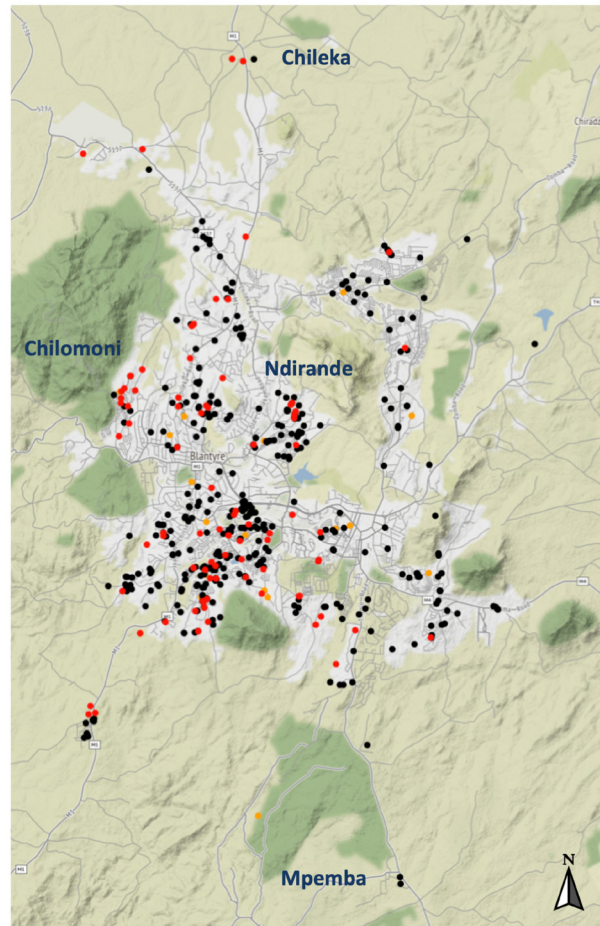


Figure 2. Map of Blantyre showing geospatial distribution of seropositive results. We collected geocoordinate data for the place of residence of all study participants at recruitment. The geocoordinates were combined with the ELISA assay results and plotted on the map of Blantyre using R. Black dot, seronegative; Orange dot, indeterminate; Red dot, seropositive.

Table 2. Crude estimates of predicted mortality at the observed seroprevalence.

Age	Population* (Blantyre)	Population* (Malawi)	Infection fatality rate	Number of Infections		Deaths	
				Blantyre	Malawi	Blantyre	Malawi
0–9 yrs	207,002	5,394,769	0.00%	24,840	663,557	0	11
10–19 yrs	199,915	4,753,846	0.01%	23,990	584,723	2	41
20–29 yrs	176,360	2,997,379	0.03%	21,163	368,678	7	114
30–39 yrs	130,362	2,160,103	0.08%	15,643	265,693	13	224
40–49 yrs	67,618	1,316,593	0.16%	8,114	161,941	13	261
50–59 yrs	28,397	722,800	0.60%	3,408	88,904	20	529
60–69 yrs	15,225	494,678	1.93%	1,827	60,845	35	1,174
70–79 yrs	5,715	280,394	4.28%	686	34,488	29	1,476
80+ yrs	2,001	152,762	7.80%	240	18,790	19	1,466
Total	832,595	18,273,324		99,911	2,247,619	138	5,295

*Source: 2018 Population and Housing Census. Estimates derived from Verity, R. *et al.* (2020). The total number of reported COVID-19 deaths on 16th July in Blantyre was 17 and in Malawi was 51.

(median age 17 years old)¹², and the elderly who mostly experience worse outcomes in other settings¹¹, are 5.1% of the population¹², largely residing in rural areas. If the prevalence of SARS-CoV-2 is very low in rural areas, this may explain the low number of deaths, and would strengthen the call to shield the elderly¹⁸.

This study has some limitations. First, selection bias is likely due to the convenience sampling approach; however, targeting HCW for regular serosurveys could help predict local transmission outbreaks. Second, this serosurvey focused on an urban population where Malawi has reported the highest concentration of COVID-19 cases. The seroprevalence in the rural population remains unknown, but if high, may prompt other explanations for the African/Malawi situation. Third, current SARS-CoV-2 ELISAs are still undergoing rigorous validation and verification in the African settings, hence seroprevalence estimates could change with new information on the accuracy of the test kits.

In conclusion, our findings indicate a major discrepancy between predicted COVID-19 mortality at the observed SARS-CoV-2 seroprevalence in HCWs with reported COVID-19 deaths in urban Malawi. The high seroprevalence estimate implies earlier exposure of SARS-CoV-2 than that reported but with slow progression of the COVID-19 epidemic. Development of locally parameterised mathematical models should be prioritised to more accurately predict the trajectory of the epidemic in SSA.

This will allow better evidence-based policy decision-making and public health response planning.

Data availability

Figshare: High SARS-CoV-2 seroprevalence in Health Care Workers but relatively low numbers of deaths in urban Malawi. <https://doi.org/10.6084/m9.figshare.12745214.v3>¹⁰

This project contains the following underlying data:

- PROTECT_FigShare Part 1 31072020.csv
- PROTECT_screening_enrolment_data_dictionary Figshare 31072020.pdf

Data are available under the terms of the [Creative Commons Attribution 4.0 International license](#) (CC-BY 4.0).

Acknowledgements

We acknowledge the PROTECT Study Team at the Malawi-Liverpool-Wellcome Trust Clinical Research Programme, namely Alice Kalilani, Gift Sagawa, Martha Moyo, Orpha Kumwenda, Sharon Nthala, Chisomo Jassi, Neema Nyakuleha and Tayamika Banda.

We thank Dr Joe Fitchett at Mologic (UK) for providing the SARS-CoV-2 ELISA kits and Dr Peter McPherson (MLW/ LSTM) for the epidemiological support.

References

1. JHU: **COVID-19 Case Tracker**. 2020. [Reference Source](#)
2. Africa CDC: **Latest updates on the COVID-19 crisis from Africa CDC**. 2020; [cited 2020 15.07.2020]. [Reference Source](#)
3. Walker PGT, Whittaker C, Watson OJ, et al.: **The impact of COVID-19 and strategies for mitigation and suppression in low- and middle-income countries**. *Science*. 2020; **369**(6502): 413–422. [PubMed Abstract](#) | [Publisher Full Text](#) | [Free Full Text](#)
4. PHIM: **Daily COVID-19 Situation Report**. Lilongwe: Public Health Institute of Malawi, Ministry of Health; 2020. [Reference Source](#)
5. Treibel TA, Manisty C, Burton M, et al.: **COVID-19: PCR screening of asymptomatic health-care workers at London hospital**. *Lancet*. 2020; **395**(10237): 1608–10. [PubMed Abstract](#) | [Publisher Full Text](#) | [Free Full Text](#)
6. Adams ER, Augustin Y, Byrne RL, et al.: **Rapid development of COVID-19 rapid diagnostics for low resource settings: accelerating delivery through transparency, responsiveness, and open collaboration**. *medRxiv*. 2020. [Publisher Full Text](#)
7. Reiczigel J, Földi J, Ozsvári L: **Exact confidence limits for prevalence of a disease with an imperfect diagnostic test**. *Epidemiol Infect*. 2010; **138**(11): 1674–8. [PubMed Abstract](#) | [Publisher Full Text](#)
8. Kahle D, Wickham H: **ggmap: Spatial Visualization with ggplot2**. *R J*. 2013; **5**(1): 144–61. [Publisher Full Text](#)
9. Wickham H: **ggplot2: Elegant Graphics for Data Analysis**. Springer-Verlag New York; 2016. [Publisher Full Text](#)
10. Jambo K: **High SARS-CoV-2 seroprevalence in Health Care Workers but relatively low numbers of deaths in urban Malawi**. *figshare*. Dataset. 2020. <http://www.doi.org/10.6084/m9.figshare.12745214.v3>
11. Verity R, Okell LC, Dorigatti I, et al.: **Estimates of the severity of coronavirus disease 2019: a model-based analysis**. *Lancet Infect Dis*. 2020; **20**(6): 669–77. [PubMed Abstract](#) | [Publisher Full Text](#) | [Free Full Text](#)
12. NSO: **2018 Malawi Population and Housing**. Zomba: National Statistical Office, Government of Malawi; 2019. [Reference Source](#)
13. Lai X, Wang M, Qin C, et al.: **Coronavirus Disease 2019 (COVID-19) Infection Among Health Care Workers and Implications for Prevention Measures in a Tertiary Hospital in Wuhan, China**. *JAMA Netw Open*. 2020; **3**(5): e209666. [PubMed Abstract](#) | [Publisher Full Text](#) | [Free Full Text](#)
14. Kluytmans-van den Bergh MFQ, Buiting AGM, Pas SD, et al.: **Prevalence and Clinical Presentation of Health Care Workers With Symptoms of Coronavirus Disease 2019 in 2 Dutch Hospitals During an Early Phase of the Pandemic**. *JAMA Netw Open*. 2020; **3**(5): e209673. [PubMed Abstract](#) | [Publisher Full Text](#) | [Free Full Text](#)
15. Cheng VC, Wong SC, Yuen KY: **Estimating Coronavirus Disease 2019 Infection Risk in Health Care Workers**. *JAMA Netw Open*. 2020; **3**(5): e209687. [PubMed Abstract](#) | [Publisher Full Text](#)
16. South African Government: **Update on Covid-19**. 2020. [Reference Source](#)
17. Njenga MK, Dawa J, Nanyingi M, et al.: **Why is There Low Morbidity and Mortality of COVID-19 in Africa? Am J Trop Med Hyg**. 2020; **103**(2): 564–569. [PubMed Abstract](#) | [Publisher Full Text](#) | [Free Full Text](#)
18. Divala T, Burke RM, Ndeketa L, et al.: **Africa faces difficult choices in responding to COVID-19**. *Lancet*. 2020; **395**(10237): 1611. [PubMed Abstract](#) | [Publisher Full Text](#) | [Free Full Text](#)