



## Fetal programming of semen quality (Fepos) cohort – a dnbc male-offspring cohort

Hærvig, Katia Keglberg; Bonde, Jens Peter; Ramlau-Hansen, Cecilia Høst; Toft, Gunnar; Hougaard, Karin Sørig; Specht, Ina Olmer; Giwercman, Aleksander; Andersen, Anne Marie Nybo; Olsen, Jørn; Lindh, Christian; Høyer, Birgit Bjerre; Tøttenbo, Sandra Søgaard

*Published in:*  
Clinical Epidemiology

*DOI:*  
[10.2147/CLEP.S242631](https://doi.org/10.2147/CLEP.S242631)

*Publication date:*  
2020

*Document version*  
Publisher's PDF, also known as Version of record

*Document license:*  
[CC BY](#)

*Citation for published version (APA):*  
Hærvig, K. K., Bonde, J. P., Ramlau-Hansen, C. H., Toft, G., Hougaard, K. S., Specht, I. O., ... Tøttenbo, S. S. (2020). Fetal programming of semen quality (Fepos) cohort – a dnbc male-offspring cohort. *Clinical Epidemiology*, 12, 757-770. <https://doi.org/10.2147/CLEP.S242631>

# Fetal Programming of Semen Quality (FEPOS) Cohort – A DNBC Male-Offspring Cohort

This article was published in the following Dove Press journal:  
*Clinical Epidemiology*

Katia Keglberg Hærvig<sup>1,2</sup>  
Jens Peter Bonde<sup>1,2</sup>  
Cecilia Høst Ramlau-Hansen<sup>3</sup>  
Gunnar Toft<sup>4</sup>  
Karin Sørig Hougaard<sup>5</sup>  
Ina Olmer Specht<sup>6</sup>  
Aleksander Giwercman<sup>7</sup>  
Anne-Marie Nybo Andersen<sup>2</sup>  
Jørn Olsen<sup>3</sup>  
Christian Lindh<sup>8</sup>  
Birgit Bjerre Høyer<sup>1,\*</sup>  
Sandra Søgaard Tøttenborg<sup>1,\*</sup>

<sup>1</sup>Department of Occupational and Environmental Medicine, Bispebjerg & Frederiksberg Hospital, Copenhagen, Denmark; <sup>2</sup>Department of Public Health, The Faculty of Health Sciences, University of Copenhagen, Copenhagen, Denmark; <sup>3</sup>Department of Public Health, Research Unit for Epidemiology, Aarhus University, Aarhus, Denmark; <sup>4</sup>Department of Clinical Epidemiology, Aarhus University Hospital, Aarhus, Denmark; <sup>5</sup>National Research Centre for the Working Environment, Copenhagen, Denmark; <sup>6</sup>The Parker Institute, Research Unit for Dietary Studies, Bispebjerg & Frederiksberg Hospital, Copenhagen, Denmark; <sup>7</sup>Molecular Reproductive Medicine, Department of Translational Medicine, Lund University, Lund, Sweden; <sup>8</sup>Division of Occupational and Environmental Medicine, Department of Laboratory Medicine, Lund University, Lund, Sweden

\*These authors contributed equally to this work

**Background:** Prenatal exposures may contribute to male infertility in adult life, but large-scale epidemiological evidence is still lacking. The Fetal Programming of Semen quality (FEPOS) cohort was founded to provide means to examine if fetal exposures can interfere with fetal reproductive development and ultimately lead to reduced semen quality and reproductive hormone imbalances in young adult men.

**Methods:** Young adult men at least 18 years and 9 months of age born to women in the Danish National Birth Cohort living in relative proximity to Copenhagen or Aarhus and for whom a maternal blood sample and two maternal interviews during pregnancy were available were invited to FEPOS. Recruitment began in March 2017 and ended in December 2019. The participants answered a comprehensive questionnaire and underwent a physical examination where they delivered a semen, urine, and hair sample, measured their own testicular volume, and had blood drawn.

**Results:** In total 21,623 sons fulfilled eligibility criteria of whom 5697 were invited and 1058 participated making the response rate 19%. Semen characteristics did not differ between sons from the Copenhagen and Aarhus clinics. When comparing the FEPOS semen parameters to similar cohorts, the median across all semen characteristics was slightly lower for FEPOS participants, although with smaller variation.

**Conclusion:** With its 1058 young adult men, the FEPOS cohort is the largest population-based male-offspring cohort worldwide specifically designed to investigate prenatal determinants of semen quality. Wide-ranging information on maternal health, lifestyle, socioeconomic status, occupation, and serum concentrations of potential reproductive toxicants during pregnancy combined with biological markers of fertility in their sons collected after puberty allow for in-depth investigations of the ‘fetal origins of adult disease hypothesis’.

**Keywords:** male infertility, prenatal exposure, fetal exposure, maternal-fetal exchange, semen quality, semen analysis

## Introduction

Infertility is the most common chronic disease among people of reproductive age, and affects up to 15–25% of all couples trying to achieve a pregnancy.<sup>1–3</sup> Male factor infertility is a contributing factor in up to half of these cases.<sup>4</sup> Around 40% of Danish men have a semen concentration below 40 million/mL, from where the probability for conception gradually decreases.<sup>5</sup> Several factors in adult life have been linked to reduced semen quality, including lifestyle such as smoking, chronic alcohol use, obesity, sleep, and nutrition<sup>6–12</sup> and occupational and environmental exposures such as sedentary work, radiation, air pollution, bisphenol A, parabens, organophosphate pesticides, pyrethroids, and phthalates.<sup>13–17</sup> Still, subfertility

Correspondence: Sandra Søgaard Tøttenborg  
Department of Occupational and Environmental Medicine, Bispebjerg & Frederiksberg Hospital, Bispebjerg Bakke 23F, Entrance 20F, 1st Floor, Copenhagen 2400, NV, Denmark  
Tel +45 23 35 58 85  
Email sandra.soegaard.toettenborg@regionh.dk

remains unexplained for many, and the underlying causes are far from understood. According to the ‘fetal origins of adult disease hypothesis’ suggested by Barker and Osmond in 1986, the environment encountered during fetal life is strongly related to the risk of developing non-communicable diseases later in life.<sup>18</sup> This was supported by Sharpe and Skakkebaek,<sup>19</sup> who subsequently proposed that hypospadias, cryptorchidism, poor semen quality, and testicular cancer are symptoms of one underlying entity with a common fetal origin.<sup>20,21</sup> Although an increasing number of studies of maternal lifestyle and health during pregnancy, such as maternal diet, alcohol consumption, smoking, medication use, and obesity support this fetal programming hypothesis,<sup>22–27</sup> large-scale epidemiological evidence is still lacking – especially regarding maternal exposure to endocrine disrupting chemicals at home and at work.<sup>28</sup> The limited body of evidence is likely explained by the complex logistics and high costs of establishing long-term longitudinal population-based studies of male reproductive function, with information on exposures during early life, such as the need for detailed maternal information and bio-specimens stored for decades before follow-up.

The Fetal Programming of Semen quality (FEPOS) cohort is nested within the Danish National Birth Cohort (DNBC)<sup>29,30</sup> and was founded to provide means to examine if fetal exposures can interfere with fetal reproductive development and ultimately lead to reduced semen quality and reproductive hormone imbalances in young adult men.

## Methods

### Study Population

In March 2017, FEPOS was established as a male-offspring sub-cohort within the DNBC. In total, 49,653 sons were born into the DNBC cohort. A full flow chart of the sampling strategy is depicted in [Figure 1](#). Sons eligible to participate in FEPOS should still be enrolled in the DNBC (N=46,911) with mothers having participated in the two maternal computer-assisted telephone interviews conducted around gestational week 16 and 31 (N=41,518) and with a stored gestational blood sample in the DNBC biobank (N=39,725).<sup>30</sup> Further, the FEPOS participants had to be at least 18 years and 9 months of age within the study period (N=24,024) (this arbitrary age cut off was due to an 18-year follow-up in the original DNBC cohort), not dead or emigrated (N=23,425) and live in Zealand (N=8817) or Jutland (N=12,806) in relative proximity to

the FEPOS clinics in Copenhagen or Aarhus. Thus, the total number of young men eligible for invitation was 21,623.

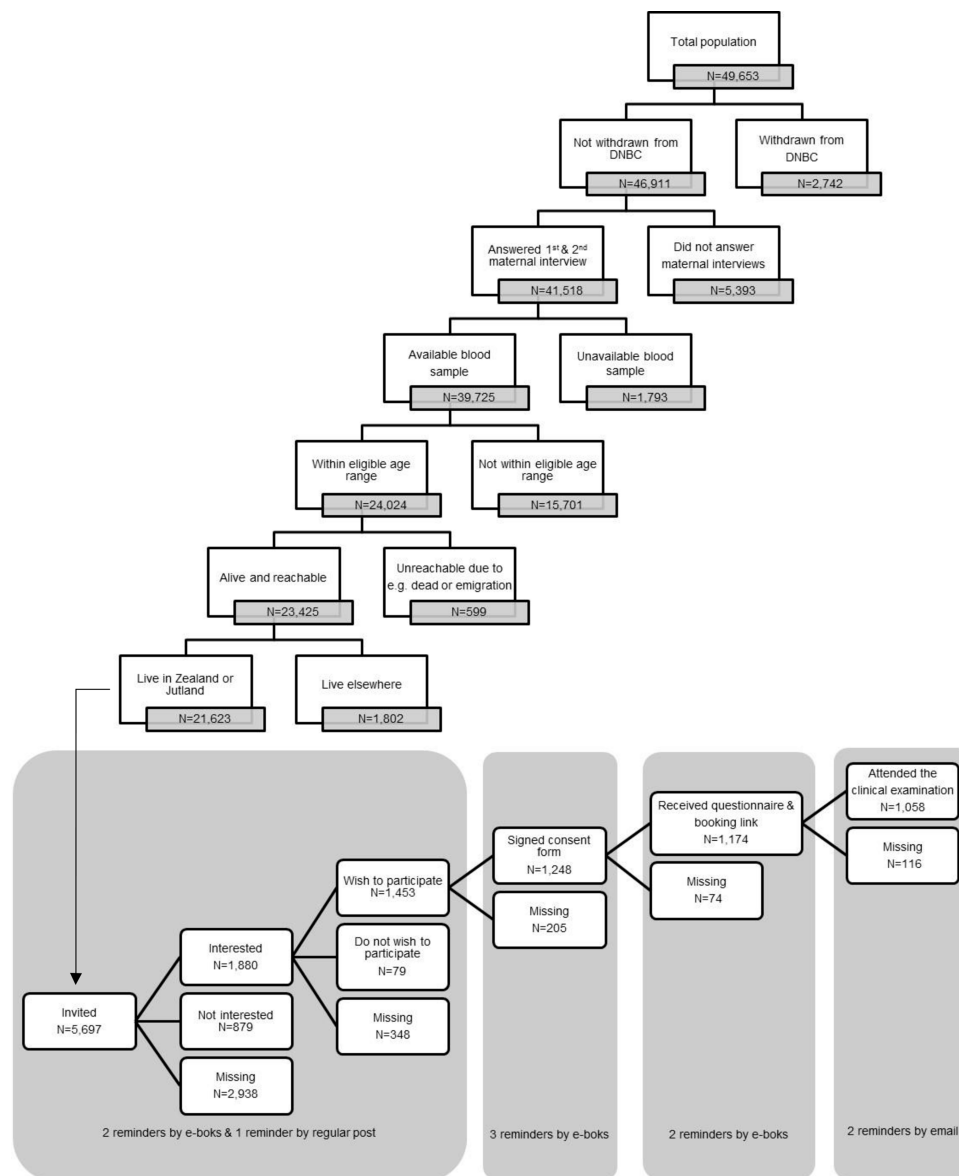
The Aarhus clinic included participants until June 2018 where it was closed due to a lack of funding. The Copenhagen clinic included participants in the entire study period that ended in December 2019. In total, 5697 men were invited and 1058 participated making the response rate 19%.

### Recruitment Logistics

Using a digitalized and comprehensive recruitment system, eligible sons were randomly selected for invitation to participate on an ongoing basis during the study period ([Figure 2](#)). The monthly number of sons invited varied in the two clinics according to capacity. An invitation letter was sent to the young men’s personal and secure digital mailbox “e-Boks” linked to the unique personal identification number. E-Boks is automatically created at the age of 15 years and used for bi-directional communication with public and private authorities, eg to receive pay checks or bank statements.<sup>31</sup> The invitation letter included information about the study and an electronic option to be contacted for additional information or decline participation. The invitation letter specified that participants who had undergone sterilization, cancer treatment, orchidectomy, or had one or no testicles were ineligible. Of the 5697 invited sons 1880 requested more information and were contacted by telephone by a member of the project group. Those still wishing to participate after the verbal information was given (N=1453), received an electronic informed consent form by e-Boks. Upon digitally consenting using their common secure login “NemID” (N=1248), participants received links to an online questionnaire and booking system to schedule an appointment for a clinical examination at the clinic closest to their home ([Figure 3](#)). After answering the online questionnaire (N=1174) participants underwent a clinical examination (N=1058). At each step of contact, non-responders were sent two reminders by e-Boks, with 14 days interval, and at the initial invitation a final reminder was sent by regular mail. Participants were each remunerated 500 DKK ( $\approx$  67 Euro).

### Data and Measurements

An overview of data collected from the questionnaire and clinical examination data is presented in [Table 1](#).



**Figure 1** Flowchart of the sampling strategy and recruitment process of the FEPOS cohort.

## Questionnaire Information

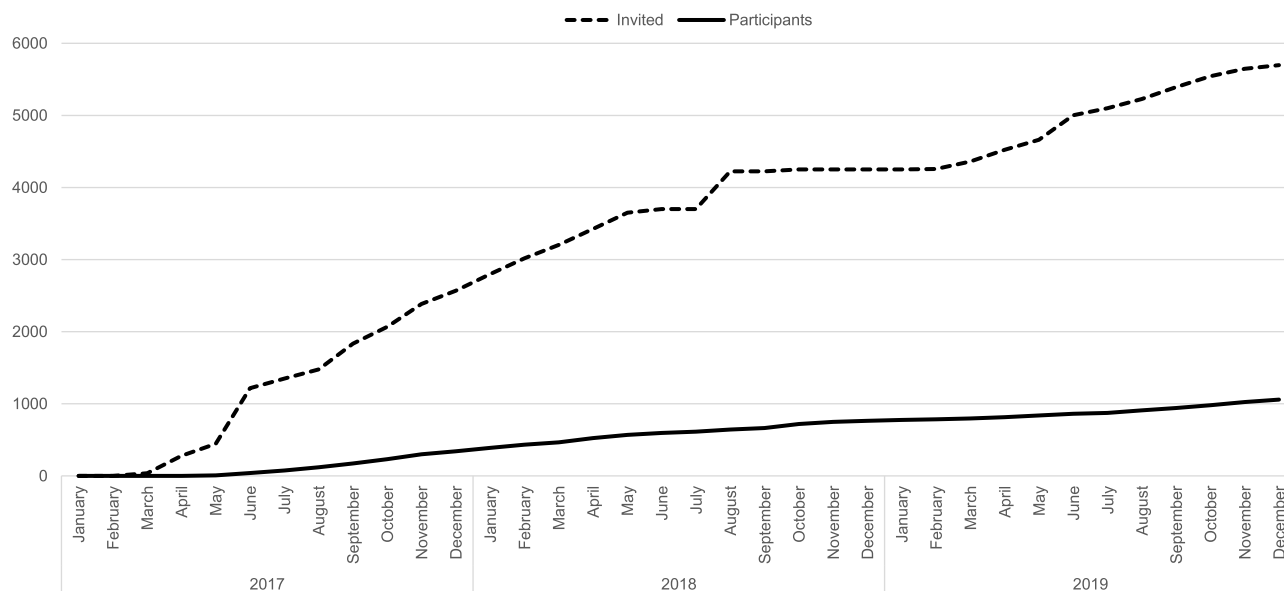
Participants filled out a comprehensive web-based questionnaire administered electronically using SurveyXact. The questionnaire included questions regarding education, work, health, and health behavior (Table 1). Nationally validated questionnaire scales were used where possible.<sup>32–35</sup> To ensure that questions were explicit and easily understood by this age group, the questionnaire was tested and revised in a group of nine young men before being sent to the FEPOS participants.

## Clinical Examination

The clinical examination was performed by a trained biomedical laboratory technician at either the Department of

Occupational and Environmental Medicine at Bispebjerg and Frederiksberg Hospital (Copenhagen) or the Department of Occupational Medicine at Aarhus University Hospital (Aarhus).

Height and waist circumference in centimeters were measured using a seca<sup>®</sup> 213 Height Measure and seca<sup>®</sup> 201 measuring tape, respectively (seca<sup>®</sup>, Hamburg, Germany). Body weight in kilos, fat percentage (including visceral fat), fat mass, fat-free mass, water percentage, muscle mass, basal metabolic rate, metabolic age, and bone weight were measured using a MC-780MA Body Composition Analyzer (Tanita<sup>®</sup>, Tokyo, Japan). Blood pressure was measured three times with 2–3 min interval



**Figure 2** Overview of the cumulative number of invited and participants in the FEPOS cohort during the study period from March 2017 to December 2019.

on the right arm, with a BP A3 Plus monitor (Microlife®, Taipei, Taiwan) at the Aarhus clinic and with an Omron M6 Comfort IT (OMRON Corporation, Kyoto, Japan) at the Copenhagen clinic. Measurements of pulmonary function forced expiratory volume in one second (FEV1) and forced vital capacity (FVC) was measured using an EasyOne® spirometer with EasyOne® disposable Spirette® tubes (ndd Medical Technologies, Inc., Andover, Massachusetts, USA). Testicular size was

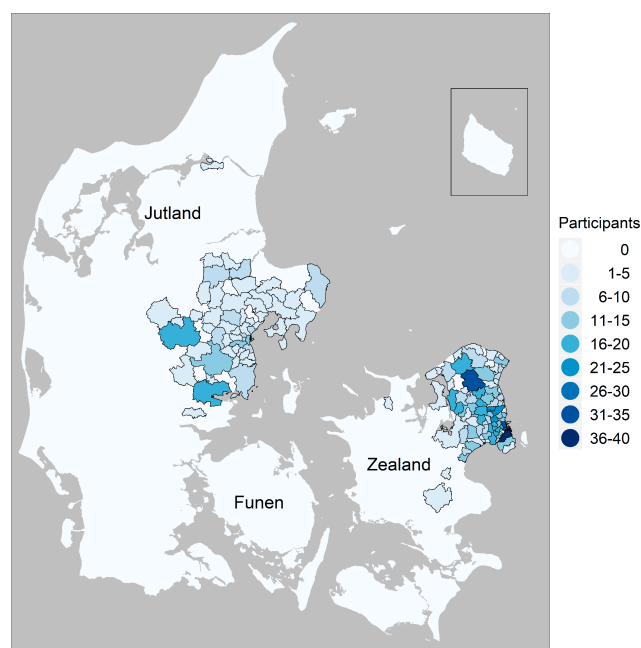
measured in privacy at the clinic by the participants themselves using a Prader Orchidometer (Bayer AG, Leverkusen, Germany). This method has previously been found valid when compared to measurements by an experienced examiner.<sup>36</sup>

### Assessment of Reproductive Hormones

Nonfasting venous blood samples were collected using VACUETTE® SAFETY Blood Collection Set + Holder (Greiner Bio-One GmbH, Kremsmünster, Austria). Plasma, serum, and whole blood were stored in CryoPure Tubes (Sarstedt, Nümbrecht, Germany) at  $-80^{\circ}\text{C}$  until analysis of reproductive hormones including hemoglobin A1c (HbA1c), follitropin (FSH), Insulin-like Growth Factor I (IGF-1), testosterone, Sex hormone-binding globulin (SHBG), insulin, lutropin (LH), thyrotropine (TSH), thyroxine (free T4 and T4), oestradiol, and inhibin B. Analyses currently await funding.

### Exposure Biomarkers of Xenobiotic Chemicals

Besides blood samples urine samples were collected at the clinics in 150 mL Frascos clear polypropylene containers with polyethylene leak proof screw caps (DELTALAB S. L., Barcelona, Spain), both free of phthalates. Samples were stored at  $3-8^{\circ}\text{C}$  for a maximum of 12 hours before transfer to polypropylene Microtubes (Sarstedt, Nümbrecht, Germany) and storage at  $-80^{\circ}\text{C}$ .



**Figure 3** Map of the residence of participants in the FEPOS cohort.

**Table 1** Overview of Data Available on the FEPOS Cohort

Category	Data Source	Variables
<b>Prenatal exposure data*</b>		
Lifestyle	DNBC telephone interview at gestational weeks 16 and 31	Alcohol Caffeine Smoking Physical activity Pre-pregnancy body mass index Stress Dietary supplements
Employment	DNBC telephone interview at gestational weeks 16 and 31	Work Workload (only first interview)
Health and medicine use	DNBC telephone interview at gestational weeks 16 and 31	Diseases Over the counter pain medication Prescribed medication Nonsteroidal anti-inflammatory drugs (NSAIDs)
Reproduction	DNBC telephone interview at gestational weeks 16 and 31	Age of onset of puberty Menstrual cycle characteristics Birth control Infertility treatment Weight gain during pregnancy
Vitamins <sup>†</sup>	Maternal plasma from gestational week 7 or 26	Vitamin D3
Biomarkers of perfluoroalkyl acid exposure (PFFA) <sup>†</sup>	Maternal plasma from gestational week 7 or 26	Perfluorohexane sulfonic acid (PFHxS) Perfluorooctanoic acid (PFOA) Perfluorooctane sulfonic acid (PFOS) Perfluoroheptanoic acid (PFHpA) Perfluorononanoic acid (PFNA) Perfluorodecanoic acid (PFDA) Perfluoroundecanoic acid (PFUnDA) Perfluorododecanoic acid (PFDoDA)

(Continued)

**Table 1** (Continued).

Category	Data Source	Variables
Biomarkers of phthalate exposure <sup>†</sup>	Maternal plasma from gestational week 7 or 26	Mono-(2-ethyl-5-oxohexyl) phthalate (5-oxo-MEHP) Mono-(2-ethyl-5-hydroxyhexyl) phthalate (5-OH-MEHP) Mono-(2-ethyl-5-carboxypentyl) phthalate (5-cx-MEPP) Mono-(4-methyl-7-carboxyheptyl) phthalate (cx-MiNP)
Biomarkers of additional xenobiotics <sup>†</sup>	Maternal plasma from gestational week 7 or 26	Triclosan <sup>§</sup> Cotinine <sup>§</sup> Acetaminophen (APAP)
<b>Data on sons' own exposures</b>		
Lifestyle	FEPOS questionnaire	Diet Alcohol Caffeine Smoking Physical activity Narcotic drugs
Education and work	FEPOS questionnaire	Educational level Work
Health	FEPOS questionnaire	Diseases Medication
Puberty and sexual experience	FEPOS questionnaire	Puberty Sexual experience
Physical tests	Clinical examination	Blood pressure Fat and muscle distribution Lung function Testicle size
Semen sample	Semen sample delivered at the clinical examination	Sperm concentration Semen volume Total sperm count Morphology Motility DNA fragmentation index (DFI) <sup>‡</sup>
Vitamins <sup>†</sup>	Blood sample taken at the clinical examination	Vitamin D3

(Continued)

Table I (Continued).

Category	Data Source	Variables
Hormones <sup>‡</sup>	Blood sample taken at the clinical examination	Hemoglobin A1c (HbA1c) Follitropin (FSH) Insulin-like Growth Factor I (IGF-I) Insulin Lutropin (LH) Thyrotropine (TSH) Thyroxine (T4) Sexual Hormone Binding Globulin (SHBG) Testosterone Thyroxine (Free T4) Oestradiol Inhibin B
Biomarkers of perfluoroalkyl acid exposure (PFFA) <sup>†</sup>	Blood sample taken at the clinical examination	Perfluorohexane sulfonic acid (PFHxS) Perfluorooctane sulfonic acid (PFOS) Perfluoroheptanoic acid (PFHpA) Perfluorooctanoic acid (PFOA) Perfluorononanoic acid (PFNA) Perfluorodecanoic acid (PFDA) Perfluoroundecanoic acid (PFUnDA) Perfluorododecanoic acid (PFDoDA)
Biomarkers of phthalate exposure <sup>†§</sup>	Urine sample taken at the clinical examination	Monoethyl phthalate (MEP) Monobutyl phthalate (MBP) Monobenzyl phthalate (MBzP) Mono-(2-ethylhexyl) phthalate (MEHP) Mono-[2-(carboxymethyl)hexyl] Phthalate (2cx-MEHP) Mono-(4-methyl-7-hydroxyoctyl) phthalate (OH-MiNP) Mono-(4-methyl-7-oxo octyl) phthalate (oxo-MiNP) Monocarboxyisonoyl Phthalate (cx-MiDP) Mono-(propyl-6-hydroxyheptyl) phthalate (OH-MPHP)
Biomarkers of phthalate exposure <sup>†§</sup>	Blood and urine taken at the clinical examination	Mono-(2-ethyl-5-oxohexyl) phthalate (5-oxo-MEHP) Mono-(2-ethyl-5-hydroxyhexyl) phthalate (5-OH-MEHP) Mono-(2-ethyl-5-carboxypentyl) phthalate (5-cx-MEPP) Mono-(4-methyl-7-carboxyheptyl) phthalate (cx-MiNP)

(Continued)

Table I (Continued).

Category	Data Source	Variables
Biomarkers of bisphenol exposure <sup>†§</sup>	Urine sample taken at the clinical examination	Bisphenol A (BPA) Bisphenol S (BPS) Bisphenol F (BPF)
Biomarker of pesticide exposure <sup>†§</sup>	Urine sample taken at the clinical examination	3-Phenoxybenzoic acid (3PBA) Trichloropyridinol (TCP)
Biomarker of exposure from urban pollution to polycyclic aromatic hydrocarbons <sup>†§</sup>	Urine sample taken at the clinical examination	1-Hydroxypyrene (1-HP)
Biomarker of smoking <sup>†§</sup>	Blood and urine taken at the clinical examination	Cotinine
Additional xenobiotic chemicals <sup>†§</sup>	Urine sample taken at the clinical examination	Di-phenylphosphate (DPP)
Additional xenobiotic chemicals <sup>†§</sup>	Blood and urine taken at the clinical examination	Triclosan

**Notes:** \*See DNBC website (<https://www.dnbc.dk/>) for all data available on mothers. <sup>†</sup>Analyses are ongoing. <sup>‡</sup>Analyses await funding. <sup>§</sup>Information on dilution with density or creatinine is available on all analyses in urine.

Maternal plasma (100 µL) was retrieved from the Danish National Biobank (DNB). First trimester plasma samples were preferred, if these were not available, we used second or third trimester plasma samples, in that prioritized order.

Vitamin D, cotinine, and a range of exposure biomarkers of several xenobiotic chemicals (Table 1) were analyzed in urine and blood, from both mother and son, using liquid chromatography-triple quadrupole mass spectrometry (QTRAP 5500, AB Sciex, Foster City, CA, USA; LC-MS/MS).<sup>37–40</sup> The analysis was performed at the Division of Occupational and Environmental Medicine at Lund University, Sweden. Analyses are ongoing – thus far 559 urine samples, 555 blood samples and 533 maternal plasma samples have been analyzed. The laboratory in Lund is

a reference laboratory for bisphenol A (BPA) analysis in urine and is part of Erlangen Round Robin inter-laboratory control program for analysis for triclosan, cotinine, trichloropyridinol (TCP), 3-phenoxybenzoic acid (3-PBA) and perfluoroalkyl acid (PFAA). The laboratory has qualified as HBM4EU laboratory for the analysis of: BPA, Bisphenol F (BPF), Bisphenol S (BPS), 1-Hydroxypyren (1-HP) and Cyclohexane-1,2-dicarboxylate-mono(oxo-isonyl) ester (oxo-MINCH) and the phthalates; Monobenzyl (MBzP), Mono-(2-ethylhexyl) (MEHP), Mono-(4-methyl-7-carboxyheptyl) (cx-MiNP), Mono-(4-methyl-7-hydroxyloctyl) (OH-MiNP), Mono-(4-methyl-7-oxo octyl) (oxo-MiNP), Mono (2-ethyl-5-oxohexyl) (5-oxo-MEHP), Mono(2-ethyl-5-hydroxyhexyl) (5-OH-MEHP), Mono-(2-ethyl-5-carboxypentyl) (5-cx-MEPP), Perfluoroheptanoic acid (PFHpA), Perfluorooctanoic acid (PFOA), Perfluorononanoic acid (PFNA), Perfluorodecanoic acid (PFDA), Perfluoroundecanoic acid (PFUnDA), Perfluorododecanoic acid (PFDoDA), Perfluorohexane sulfonic acid (PFHxS), and Perfluorooctane sulfonic acid (PFOS).

## Hair Samples

Approximately 150 hair strands (~10–20 mg) were cut from the vertex posterior as close to the scalp as possible. The hair strands were stuck on paper with adhesive tape (Lyreco, Marly, France) with clear indication of the hair root, and stored in an envelope at room temperature. The thought was to conduct hair analysis as an indicator of egg stress,<sup>41,42</sup> but no specific studies are planned yet.

## Semen Samples

Participants had the option to collect the semen sample at the clinic or at home. When choosing the latter, detailed instructions on collection and transportation was sent to the participant together with a polypropylene sample container with a diameter of 79 mm and a height of 22mm, with polyethylene snap-lid (Nerbe Plus GmbH, Winsen/Luhe, Germany) for sample collection. This container was also used to collect the semen sample in the clinic. Participants were informed that they should be sexually abstinent 48–72 hours prior to semen collection. All semen analyses followed the recommendations by the World Health Organization (WHO) 2010.<sup>43</sup> Immediately upon receipt in the laboratory, the semen volume was measured by weighing (Scout<sup>®</sup> SKX222 Portable Precision Balance, OHAU<sup>®</sup>, Parsippany, New Jersey, USA) of the sample in the pre-weighed container. The sample was then placed in

a 37°C HERATherm<sup>™</sup> Compact Microbiological Incubator (Thermo Fisher Scientific, Waltham, Massachusetts, USA) for liquefaction. After liquefaction using a TrioMix (Triolab, Brøndby, Denmark), samples were analyzed manually for sperm concentration, total sperm count, and motility using a CompuDiff 2000–16 Semen Analyzer (Molek AB, Arsta, Sweden). One trained biomedical laboratory technician affiliated to the clinic in Copenhagen and another to the clinic in Aarhus performed all in-house semen analyses. Sperm concentration was determined on two aliquots of semen samples using a BLAUBRAND<sup>®</sup> Improved Neubauer Hemocytometer (BRAND<sup>®</sup>, Wertheim, Germany) diluted with NaHCO<sub>3</sub> resolution according to concentration. The diluted semen was transferred to each chamber of the hemocytometer and put in a humid chamber for 10 minutes. Each chamber was examined until at least 200 cells had been counted. Sperm cell motility was determined by counting the proportion of a) progressive sperm; b) non-progressive sperm; c) immotile sperm, on 200 spermatozoa within each of two fresh drops of semen, placed on a preheated (37°C), clean glass slide covered with a cover slip using a CompuDiff 2000–16 Semen Analyzer (Molek AB, Arsta, Sweden). Morphology was analyzed at the Reproductive Medicine Centre, Skaane University Hospital, in Malmö, Sweden. DNA fragmentation Index (DFI), measured by flow cytometry semen chromatin structure assay<sup>44</sup> was analyzed at the Reproductive Medicine Centre, Skaane University Hospital, in Malmö, Sweden (no results yet).

The FEPOS biomedical laboratory technicians participated in a follow-up quality control with the Reproductive Medicine Centre in Malmö where they were originally trained to perform the semen analyses. In January 2018, based on five semen samples, the average coefficient of variation and range for the FEPOS biomedical laboratory technicians versus the reference laboratory were 18.4% (10.1–31.4%) versus 17.6% (1.3–28.3%) for sperm concentration and 12.7% (2.0–26.0%) versus 38.6% (9.1–81.6%) for sperm motility. As the Aarhus clinic would only include participants until June 2018, only the Copenhagen-based clinic followed the ESHRE External Quality Assessment scheme (Centre for Andrology, Karolinska University Hospital, Stockholm, Sweden). The average Z-scores based on four semen samples at each test period; winter 2017, spring 2018, and winter 2018, were –0.04 for semen concentration, –0.60 for motility, and 0.27 for all progressive compared to expert reference examiners. This was comparable to previous



studies and well below  $\pm 3$ , considered acceptable for semen quality measures.<sup>45</sup>

## Biobank

Additional quantities of biological material were collected for long-term storage at  $-80^{\circ}\text{C}$  in the DNB at Statens Serum Institut, Copenhagen, Denmark, where all other samples collected within DNBC are also stored. The amounts sent to the DNB were three 2 mL MaxxLine tubes each containing 250  $\mu\text{L}$  semen, three 2 mL MaxxLine tubes with 1.5 mL urine, four 2 mL MaxxLine tubes with 600  $\mu\text{L}$  plasma, four 2 mL MaxxLine tubes containing 600  $\mu\text{L}$  serum, and two 4.5 mL CryoPure tubes with 3.5 mL EDTA whole blood.

## Ethical Approval

This study was conducted in accordance with the Declaration of Helsinki. The establishment of the FEPOS cohort was approved by the Scientific Research Ethics Committee for Copenhagen and Frederiksberg (No. H-16,015,857) and the Danish Data Protection Agency (P-2019-503). Recruitment and data collection were also permitted by the Steering Committee of the DNBC (Ref. no. 2016–08).

## Results

### Cohort Characteristics

Selected maternal characteristics are presented in Table 2. Mean age of the mothers was 30.5 years. Smoking during first trimester was relatively common (23%) and most maternal plasma samples were from the first trimester (92%). Median concentration of mono-(4-methyl-7-carboxyheptyl) phthalate measured in blood was 0.3 ng/mL (10th-90th percentile (p10-p90): 0.2 ng/mL, 0.8 ng/mL) and median PFOS was 26.3 ng/mL (p10-p90: 17.0 ng/mL, 40.1 ng/mL). Selected characteristics of the sons are presented in Table 3. Besides more sons from the Aarhus clinic donating hair samples (90% versus 58% in the Copenhagen clinic) no big differences between sons from the Aarhus clinic and the Copenhagen clinic were observed. Of the 1054 sons who delivered a semen sample 87% chose to do so at the clinics. Azoospermia was detected in 17 (2%) young men. Median mono-(4-methyl-7-carboxyheptyl) phthalate measured in urine was 3.6 ng/mL (p10-p90: 1.0 ng/mL, 12.6 ng/mL) and median PFOS was 4.3 ng/mL (p10-p90: 2.6 ng/mL, 7.2 ng/mL).

Semen parameters are presented in Table 4. The median total sperm count was 104.9 million for sons from the Copenhagen clinic compared to 95.9 million among sons from the Aarhus clinic. The median time from ejaculation until motility analysis was longer in the Copenhagen clinic (45 versus 35 minutes). The median values across all other semen parameters were similar among sons from the Copenhagen and Aarhus clinics.

Compared to semen parameters of 365 male cohort members 20–22 years of age in the Testicular Function Study nested in the Western Australian Pregnancy Cohort (Raine)<sup>46</sup> the median across all semen parameters were a little lower for FEPOS participants. A slightly lower median across all semen parameters was also found compared to those of young Danish men presenting for compulsory medical examination upon military conscription,<sup>47</sup> although the variation in FEPOS was smaller. The most pronounced differences were for semen volume and total sperm count which might be due to a slightly longer ejaculatory abstinence among conscripts than FEPOS participant (median 2.5 days versus 2 days). The longer abstinence time in conscripts can largely be ascribed to stricter requirements regarding abstinence (participants not complying were rescheduled) whereas all FEPOS participants were included even though they did not comply with abstinence time instructions. Compared to WHO's lower reference limits<sup>43,48</sup> 86% had a semen volume of  $\geq 1.5$  mL, 83% had a sperm concentration of  $\geq 15$  million/mL, 79% had a total sperm count of  $\geq 39$  million, 95% had  $\geq 32\%$  motile sperm, and 74% had  $\geq 4\%$  morphologically normal sperm. As the WHO reference limits were derived by studies of fertile men who recently became fathers it is to be expected that less than 95% of an unselected cohort like FEPOS have semen parameters above the reference limits.<sup>46,48–50</sup>

## Discussion

To date, only few birth cohorts have detailed maternal information and biological specimens and a sufficient follow-up period and population size that enables assessment of prenatal determinants of reproductive parameters in the offspring.<sup>14,51–55</sup> Of these, the Raine Testicular Function Study<sup>46,54</sup> compares best to the FEPOS cohort. With 1058 participants the FEPOS cohort is the largest population-based male-offspring cohort worldwide with wide-ranging information on maternal health, lifestyle, socioeconomic status, occupation, and a maternal blood sample analyzed for exposure biomarkers of several xenobiotic chemicals

**Table 2** Selected Maternal Characteristics of the 1057 Mothers to the 1058 Included Sons in the FEPOS Cohort\*

Characteristics	All
	N=1057
Age in years, mean [SD]	30.5 [4.2]
Pre-pregnancy body mass index (kg/m <sup>2</sup> ), mean [SD]	22.8 [3.6]
Infertility treated, N (%)	67 (6)
Smokers, N (%)	245 (23)
Cotinine plasma levels (ng/mL) <sup>†</sup> , median [p10-p90]	0.4 [0.1–50.4]
Number of samples <LOD of 0.2 ng/mL, N (%)	146 (27)
Alcohol consumption (units/week), mean [SD]	0.7 [1.1]
Family occupational status, N (%)	
High grade professional	357 (34)
Low grade professional	350 (33)
Skilled worker	203 (19)
Unskilled worker	98 (9)
Student	45 (4)
Unclassified	≤5
Plasma sample available <sup>†</sup> , N (%)	
1st trimester blood sample	489 (92)
2nd trimester blood sample	42 (8)
3rd trimester blood sample	≤5
Biomarkers of perfluoroalkyl acid exposure (PFFA) <sup>†</sup> , median [p10-p90]	
Perfluorooctanoic acid (PFOA) (ng/mL)	4.6 [2.5–7.2]
Number of samples <LOD of 0.02 ng/mL, N (%)	0 (0)
Perfluorooctane sulfonic acid (PFOS) (ng/mL)	26.3 [17.0–40.1]
Number of samples <LOD of 0.02 ng/mL, N (%)	0 (0)
Biomarkers of phthalate exposure <sup>†</sup> , median [p10-p90]	
Mono-(2-ethyl-5-oxohexyl) phthalate (5-oxo-MEHP) (ng/mL)	0.1 [<LOD-0.3]
Number of samples <LOD of 0.1 ng/mL, N (%)	271 (51)
Mono-(2-ethyl-5-hydroxyhexyl) phthalate (5-OH-MEHP) (ng/mL)	0.2 [0.1–0.9]
Number of samples <LOD of 0.05 ng/mL, N (%)	52 (10)
Mono-(2-ethyl-5-carboxypentyl) phthalate (5-cx-MEPP) (ng/mL)	0.7 [0.4–1.5]
Number of samples <LOD of 0.05 ng/mL, N (%)	0 (0)
Mono-(4-methyl-7-carboxyheptyl) phthalate (cx-MiNP) (ng/mL)	0.3 [0.2–0.8]
Number of samples <LOD of 0.02 ng/mL, N (%)	0 (0)
Biomarkers of additional xenobiotics <sup>†</sup> , median [p10-p90]	
Triclosan (ng/mL)	1.3 [<LOD-15.1]
Number of samples <LOD of 0.1 ng/mL, N (%)	107 (20)
Acetaminophen (APAP) (ng/mL)	<LOD [<LOD-1.4]
Number of samples <LOD of 0.5 ng/mL, N (%)	424 (80)

**Notes:** \*One mother had twins. <sup>†</sup>Analysis is ongoing, so far 532 samples have been analysed. p10-p90: 10th-90th percentile.

**Abbreviation:** LOD, Limit of detection.

combined with biological markers of fertility in their sons collected after puberty. The detailed and prospectively collected prenatal information allow for comprehensive confounder control and reduces the risk of information bias.<sup>56</sup> Data collected from the mothers and children at different timepoints in the children's lives by the DNBC and information on environmental exposures collected in the FEPOS cohort further enables studies on childhood and adolescence mediators. The possibility for linkage of the FEPOS cohort to the comprehensive Danish national health registers further increase the value of the FEPOS cohort.

The response rate of 19% is in line with response rates from previous semen studies<sup>56–58</sup> including the semen study among young Danish conscripts.<sup>59</sup> It is lower compared to the Raine Testicular Function Study of 46% (40% delivered a semen sample)<sup>56</sup> and the Danish study including sons of mothers from Healthy Habits for Two with a response rate of 49%.<sup>23</sup> The lower participation in FEPOS may be explained by the contact via E-boks which can be challenging for this younger age group, but the alternatives were too costly and possibly not more effective. Another reason for the lower participation could be the demanding recruitment process. To be in accordance with Danish ethical regulations, the recruitment process involved four steps entirely depending on action from the young men. This included verbal confirmation of participation, online informed consent, self-administered questionnaire, and online booking of clinical visit, between the initial invitation and final participation at the clinics. Future research studies assessing reproductive health among young men should focus on how to get hold of participants in a less demanding way.

Differential selection related to exposures, as well as semen quality has the potential to bias the risk estimates. In studies of fertility, selection bias is often caused by the higher propensity for participation by men concerned about their fertility, trying to father children or previously diagnosed with urogenital disorders or suspected infertility.<sup>60</sup> Participants in the FEPOS cohort were 18–19 years of age and presumably not yet concerned or aware of their fertility status, which minimizes the risk of self-selection bias. Moreover, a Danish study found that biomarkers of spermatogenesis, such as inhibin B level, did not differ between men who chose to participate in a semen study and men who did not.<sup>59</sup> The sons were intentionally not informed about the specific exposures of interest but only that the focus was fetal exposure. Therefore, the sons' participation is

**Table 3** Selected Characteristics of 1058 Sons Included in the FEPOS Cohort\*

Characteristics	All	Copenhagen Clinic	Aarhus Clinic
	N=1058	N=830	N=228
Body Mass Index (kg/m <sup>2</sup> ), mean [SD]	22.5 [3.4]	22.5 [3.3]	22.7 [3.6]
Body Composition analysed, N (%)	1055 (100)	829 (100)	226 (99)
Body fat mass (kg), mean [SD]	11.5 [6.7]	11.3 [6.6]	12.3 [6.8]
Muscle mass (kg), mean [SD]	60.8 [7.1]	61.0 [7.1]	60.0 [7.1]
Smoking habits, N (%)			
Daily smoking	250 (24)	198 (24)	52 (23)
Occasional/former smoker	296 (28)	241 (29)	55 (24)
Never smoker	508 (480)	389 (47)	119 (52)
Cotinine plasma levels (ng/mL) <sup>†‡</sup> , median [p10-p90]	5.8 [0.3–2951.9]	11.5 [0.4–2540.1]	1.5 [0.3–3124.4]
Number of samples <LOD of 0.3 ng/mL, N (%)	46 (8)	24 (7)	22 (10)
Alcohol drinker, N (%)	984 (93)	769 (93)	215 (94)
Physical activity, N (%)			
No physical activity	184 (18)	149 (18)	35 (16)
1 time a week	139 (13)	107 (13)	32 (14)
2 times a week	201 (19)	165 (20)	36 (16)
3 times a week	220 (21)	164 (20)	56 (25)
4 times a week	155 (15)	121 (15)	34 (15)
≥5 times a week	155 (15)	122 (15)	33 (15)
Biospecimens collected, N (%)			
Semen	1054 (100)	829 (100)	225 (99)
Blood	1047 (99)	821 (99)	226 (99)
Urine	1042 (99)	819 (99)	223 (98)
Hair	690 (65)	484 (58)	206 (90)
Lung function measured, N (%)	1052 (100)	826 (100)	226 (99)
Forced Expiratory Volume (FVC), mean [SD]	5.6 [0.8]	5.6 [0.8]	5.3 [1.0]
Forced Expired Volume in the first second (FEV1), mean [SD]	4.6 [0.7]	4.7 [0.6]	4.4 [0.9]
Ejaculation at the clinic, N (%)	910 (87)	720 (87)	190 (86)
Spillage of semen sample, N (%)	182 (17)	146 (18)	36 (16)
Season of ejaculation, N (%)			
Winter	199 (19)	146 (18)	53 (23)
Spring	205 (19)	142 (17)	63 (28)
Summer	258 (24)	213 (26)	45 (20)
Autumn	396 (37)	329 (40)	67 (29)
Biomarkers of perfluoroalkyl acid exposure (PFFA) <sup>†‡</sup> , median [p10-p90]			
Perfluorooctanoic acid (PFOA) <sup>‡</sup> (ng/mL)	1.3 [0.9–2.0]	1.4 [0.9–2.1]	1.3 [0.9–2.0]
Number of samples <LOD of 0.02 ng/mL, N (%)	0 (0)	0 (0)	0 (0)
Perfluorooctane sulfonic acid (PFOS) <sup>‡</sup> (ng/mL)	4.3 [2.6–7.2]	4.1 [2.6–6.5]	4.4 [2.8–7.7]
Number of samples <LOD of 0.02 ng/mL, N (%)	0 (0)	0 (0)	0 (0)

(Continued)

Table 3 (Continued).

Characteristics	All	Copenhagen Clinic	Aarhus Clinic
	N=1058	N=830	N=228
Biomarkers of pesticide exposure <sup>§</sup> , median [p10-p90]			
Trichloropyridinol (TCP) <sup>§</sup> (ng/mL)	1.0 [0.3–3.5]	1.0 [0.4–3.7]	0.9 [0.3–3.2]
Number of samples <LOD of 0.1 ng/mL, N (%)	0 (0)	0 (0)	0 (0)
3-Phenoxybenzoic acid (3PBA) <sup>§</sup> (ng/mL)	0.3 [0.1–1.1]	0.3 [0.1–1.1]	0.3 [0.1–1.3]
Number of samples <LOD of 0.05 ng/mL, N (%)	31 (6)	20 (6)	11 (5)
Bisphenol A (BPA) <sup>†§</sup> , median [p10-p90]			
Bisphenol A (BPA) <sup>†§</sup> , median [p10-p90]	1.3 [0.3–5.5]	1.4 [0.4–6.6]	1.2 [0.3–4.7]
Number of samples <LOD of 0.2 ng/mL, N (%)	19 (3)	7 (2)	12 (5)
Biomarkers of phthalate exposure measured in urine <sup>†§</sup> , median [p10-p90]			
Mono-(4-methyl-7-carboxyheptyl) phthalate (cx-MiNP) <sup>§</sup> (ng/mL)	3.6 [1.0–12.6]	3.7 [1.0–13.4]	3.5 [1.0–10.5]
Number of samples <LOD of 0.05 ng/mL, N (%)	0 (0)	0 (0)	0 (0)
Mono-(2-ethyl-5-oxohexyl) phthalate (5-oxo-MEHP) <sup>§</sup> (ng/mL)	2.6 [0.8–8.1]	2.7 [0.8–8.2]	2.4 [0.7–7.5]
Number of samples <LOD of 0.2 ng/mL, N (%)	≤5	≤5	0 (0)
Mono-(2-ethyl-5-hydroxyhexyl) phthalate (5-OH-MEHP) <sup>§</sup> (ng/mL)	4.5 [1.5–14.3]	4.7 [1.6–15.2]	4.3 [1.3–13.0]
Number of samples <LOD of 0.1 ng/mL, N (%)	0 (0)	0 (0)	0 (0)
Mono-(2-ethyl-5-carboxypentyl) phthalate (5-cx-MEPP) <sup>§</sup> (ng/mL)	3.7 [1.1–11.9]	3.9 [1.3–12.4]	3.5 [1.0–10.1]
Number of samples <LOD of 0.07 ng/mL, N (%)	0 (0)	0 (0)	0 (0)
Biomarkers of phthalate exposure measured in blood <sup>†‡</sup> , median [p10-p90]			
Mono-(4-methyl-7-carboxyheptyl) phthalate (cx-MiNP) <sup>‡</sup>	0.5 [0.2–1.5]	0.5 [0.2–1.5]	0.5 [0.2–1.5]
Number of samples <LOD of 0.02 ng/mL, N (%)	0 (0)	0 (0)	0 (0)
Mono-(2-ethyl-5-oxohexyl) phthalate (5-oxo-MEHP) <sup>‡</sup>	<LOD [<LOD-0.1]	<LOD [<LOD-0.1]	<LOD [<LOD-0.1]
Number of samples <LOD of 0.1 ng/mL, N (%)	532 (96)	314 (95)	218 (96)
Mono-(2-ethyl-5-hydroxyhexyl) phthalate (5-OH-MEHP) <sup>‡</sup>	<LOD [<LOD-0.1]	<LOD [<LOD-0.1]	0.1 [<LOD-0.1]
Number of samples <LOD of 0.05 ng/mL, N (%)	305 (55)	193 (59)	112 (50)
Mono-(2-ethyl-5-carboxypentyl) phthalate (5-cx-MEPP) <sup>‡</sup>	0.2 [0.1–0.4]	0.2 [0.1–0.4]	0.2 [0.1–0.3]
Number of samples <LOD of 0.05 ng/mL, N (%)	12 (2)	7 (2)	≤5
Triclosan <sup>†‡</sup> , median [p10-p90]			
Triclosan <sup>†‡</sup> , median [p10-p90]	<LOD [<LOD-0.2]	<LOD [<LOD-0.2]	<LOD [<LOD-0.2]
Number of samples <LOD of 0.1 ng/mL, N (%)	451 (81)	262 (80)	189 (84)

Notes: \*One mother had twins. †Analysis is ongoing, so far 559 urine samples and 555 blood samples have been analysed. ‡Measured in blood. §Measured in urine. p10-p90: 10th-90th percentile.

Abbreviation: LOD, limit of detection.

unlikely to depend on exposure status. However, differential selection together with potential misclassification of exposure and outcomes should be considered in each specific hypothesis tested in this population. To minimize the risk of selection bias it is possible to use selection weights<sup>61</sup> in the upcoming FEPOS studies.

## Perspectives

The FEPOS cohort provides opportunity to study the “fetal origins of adult disease hypothesis” related to several suspected exposures.<sup>18</sup> Analyses of biological samples for

several xenobiotic chemicals and questionnaire information from both the mother and son combined with linkage to nationwide Danish health registers provide countless research opportunities. The first two publications using the FEPOS cohort have just been published.<sup>62,63</sup> The first study investigated fetal exposure to paternal smoking and semen quality in the adult son and found a lower semen concentration and total sperm count among sons paternally, but not maternally, exposed to smoking. Indication of a higher risk of small testicular volume among sons of smoking fathers, compared to sons of non-smoking fathers were also

**Table 4** Semen Characteristics of 1054 Sons Who Delivered a Semen Sample in the FEPOS Cohort

Characteristics	All	Copenhagen Clinic	Aarhus Clinic
	N=1054	N=829	N=225
	Median (5–95 Percentile)	Median (5–95 Percentile)	Median (5–95 Percentile)
Abstinence time (days)	2.0 (0.5–4.5)	2.0 (0.5–4.5)	2.5 (0.5–4.5)
Semen volume (mL)*	2.7 (1.0–5.4)	2.7 (1.0–5.4)	2.6 (1.0–5.2)
Sperm concentration (million/mL)	38.7 (2.7–138.0)	38.7 (2.8–138.8)	38.6 (2.4–134.8)
Total sperm count (million)*	102.6 (8.1–409.2)	104.9 (7.2–407.2)	95.9 (8.4–417.1)
Motile sperm (%) <sup>†</sup>	63 (30–83)	64 (31–84)	63 (28–80)
Morphologically normal sperm (%) <sup>†</sup>	6 (0–15)	6 (0–15)	6 (1–15)
Testicular size (mL)	15 (8–25)	15 (8–25)	15 (8–25)
Minutes until motility analysis	45 (30–90)	45 (35–90)	35 (25–90)

Notes: \*182 samples excluded due to spillage. <sup>†</sup>Motility and morphology not available for 17 sons with azoospermia.

observed.<sup>62</sup> The second study investigated semen quality among young men taking protein supplements and found no association between use of protein supplements and semen parameters.<sup>63</sup>

## Data Sharing Statement

The FEPOS cohort is managed by researchers from multiple Danish institutions and is overseen by a scientific reference group consisting of researchers from the DNBC management group amongst others. The cohort is considered an open access resource for researchers with projects that fall within the policy and overall aim of the DNBC [<https://www.dnbc.dk/access-to-dnbc-data>]. The scientific management team reserves the right to prioritize ongoing projects and encourages external applicants to collaborate with Danish researchers including principal investigator of FEPOS, Sandra Søgaard Tøttenborg [sandra.soegaard.toettenborg@regionh.dk]. Further questions can be directed to the DNBC administrative office [dnbc-research@ssi.dk].

## Acknowledgments

We are grateful to all participants and to biomedical laboratory technologists Marianne Lipka Flensburg and Joan Dideriksen for running the clinics and collecting data. We also thank Josefine Rahbæk Larsen for assisting with recruitment and data entry, Cecilia Tingsmark for doing the morphology analysis, and Aleksandra Kondic for DNA fragmentation analyses.

The Danish National Birth Cohort was established with a significant grant from the Danish National Research Foundation. Additional support was obtained from the Danish Regional Committees, the Pharmacy Foundation, the Egmont Foundation, the March of Dimes Birth Defects

Foundation, the Health Foundation and other minor grants. The DNBC Biobank has been supported by the Novo Nordisk Foundation and the Lundbeck Foundation.

## Author Contributions

Birgit Bjerre Høyer, Ina Olmer Specht, Jens Peter Bonde, Anne-Marie Nybo Andersen, Jørn Olsen, Christian Lindh and Aleksander Giwercman acquired funding. All authors made substantial contributions to conception and design. Data were acquired by Katia Keglberg Hærvig, Birgit Bjerre Høyer, Aleksander Giwercman, Cecilia Høst Ramlau-Hansen, Gunnar Toft, Jens Peter Bonde, Christian Lindh, and Sandra Søgaard Tøttenborg. The original draft was prepared by Katia Keglberg Hærvig. All authors contributed to data analysis and interpretation, revision of the article, gave final approval of the version to be published, and agreed to be accountable for all aspects of the work.

## Funding

The FEPOS cohort is a part of the ReproUnion collaborative study, co-financed by the European Union, Interreg V ÖKS (938 048 Euro), the Lundbeck Foundation (213 572 Euro), the Capital Region of Denmark (62,830 Euro), Medical Doctor Sofus Carl Emil Friis and Spouse Olga Doris Friis's Grant (57,402 Euro), Axel Muusfeldt's Foundation (18,203 Euro) and A.P. Møller Foundation (9135 Euro).

## Disclosure

Prof. Dr. Aleksander Giwercman reports grants from Ferring Pharmaceuticals and personal fees from Besins Healthcare Nordic and Sandoz, outside the submitted

work. The authors declare that they have no other possible conflicts of interest in this work.

## References

- Nielsen HS, Schmidt L, Andersen AN, et al. Forebyggelse af nedsat frugtbarhed [Prevention of infertility, in Danish]. 2016. 1–152.
- Schmidt L. Infertility and assisted reproduction in Denmark epidemiology and psychosocial consequences. *Dan Med Bull.* 2006;53:390–417.
- Louis JF, Thoma ME, Sørensen DN, et al. The prevalence of couple infertility in the United States from a male perspective: evidence from a nationally representative sample. *Andrology.* 2014;1(5):741–748. doi:10.1111/j.2047-2927.2013.00110.x
- Practice Committee of the American Society for Reproductive Medicine. Diagnostic evaluation of the infertile male: a committee opinion [Internet]. *Fertil Steril.* 2015;103:e18–25.
- Jørgensen N, Joensen UN, Jensen TK, et al. Human semen quality in the new millennium: a prospective cross-sectional population-based study of 4867 men. *BMJ Open.* 2012;2(4):e000990. doi:10.1136/bmjopen-2012-000990
- Ramlau-Hansen CH, Thulstrup AM, Aggerholm AS, Jensen MS, Toft G, Bonde JP. Is smoking a risk factor for decreased semen quality? A cross-sectional analysis. *Hum Reprod.* 2007;22(1):188–196. doi:10.1093/humrep/del364
- Gabrielsen JS, Tanrikut C. Chronic exposures and male fertility: the impacts of environment, diet, and drug use on spermatogenesis. *Andrology.* 2016;4(4):648–661. doi:10.1111/andr.12198
- Jensen TK, Gottschau M, Otto J, et al. Habitual alcohol consumption associated with reduced semen quality and changes in reproductive hormones; a cross-sectional study among 1221 young Danish men. *BMJ Open.* 2014;1–9.
- Villalta J, Balleca JL, Nicolas JM, Osaba De MJM, Antunez E, Pimentel C. Testicular function in asymptomatic chronic alcoholics: relation to ethanol intake. *Alcohol Clin Exp Res.* 1997;21(1):128–133.
- Gaskins AJ, Mendiola J, Afeiche M, Jørgensen N, Swan SH, Chavarro JE. Physical activity and television watching in relation to semen quality in young men. *Br J Sports Med.* 2015;49(4):265–270. doi:10.1136/bjsports-2012-091644
- Eisenberg ML, Kim S, Chen Z, Sundaram R, Schisterman EF, Louis GMB. The relationship between male BMI and waist circumference on semen quality: data from the LIFE study. *Hum Reprod.* 2014;29(2):193–200. doi:10.1093/humrep/det428
- Jensen TK, Andersson A, Skakkebaek NE, et al. Original contribution association of sleep disturbances with reduced semen quality: a cross-sectional study among 953 healthy young Danish men. *Am J Epidemiol.* 2013;177(10):1027–1037. doi:10.1093/aje/kws420
- Zamkowska D, Karwacka A, Jurewicz J, Radwan M. Environmental exposure to non-persistent endocrine disrupting chemicals and semen quality: an overview of the current epidemiological evidence. *Int J Occup Med Environ Health.* 2018;31(4):377–414. doi:10.13075/ijomh.1896.01195
- Vested A, Ramlau-Hansen CH, Olsen SF, et al. Associations of in Utero exposure to perfluorinated alkyl acids with human semen quality and reproductive hormones in adult men. *Environ Health Perspect.* 2013;121(4):453–458. doi:10.1289/ehp.1205118
- Wdowiak A, Skrzypek M, Stec M, Panasiuk L. Effect of ionizing radiation on the male reproductive system. *Ann Agric Environ Med.* 2019;26(2):210–216. doi:10.26444/aem/106085
- Jurewicz J, Dziewirska E, Radwan M, Hanke W. Air pollution from natural and anthropic sources and male fertility. *Reprod Biol Endocrinol.* 2018;16:109. doi:10.1186/s12958-018-0430-2
- Bonde JPE. Occupational causes of male infertility. *Curr Opin Endocrinol Diabetes Obes.* 2013;20(3):234–239. doi:10.1097/MED.0b013e32835f3d4b
- Barker D, Osmond C. Infant mortality childhood nutrition, and ischaemic heart disease in England and Wales. *Lancet.* 1986;327(8489):1077–1081. doi:10.1016/S0140-6736(86)91340-1
- Sharpe RM, Skakkebaek NE. Are oestrogens involved in falling sperm counts and disorders of the male reproductive tract? *Lancet.* 1993;341:1392–1396. doi:10.1016/0140-6736(93)90953-E
- Skakkebaek NE, Rajpert-de Meyts E, Main KM. Testicular dysgenesis syndrome: an increasingly common developmental disorder with environmental aspects: opinion. *Hum Reprod.* 2001;16(5):972–978. doi:10.1093/humrep/16.5.972
- Skakkebaek NE, Rajpert-de Meyts E, Buck Louis GM, et al. Male reproductive disorders and fertility trends: influences of environment and genetic susceptibility. *Physiol Rev.* 2015;96(1):55–97. doi:10.1152/physrev.00017.2015
- Kilcoyne KR, Mitchell RT. Assessing the impact of in-utero exposures: potential effects of paracetamol on male reproductive development. *Arch Dis Child.* 2017;102:1169–1175. doi:10.1136/archdischild-2016-311374
- Ramlau-Hansen CH, Nohr EA, Thulstrup AM, Bonde JP, Storgaard L, Olsen J. Is maternal obesity related to semen quality in the male offspring? A pilot study. *Hum Reprod.* 2007;22(10):2758–2762. doi:10.1093/humrep/dem219
- Ramlau-Hansen CH, Thulstrup AM, Storgaard L, Toft G, Olsen J, Bonde JP. Is prenatal exposure to tobacco smoking a cause of poor semen quality? A follow-up study. *Am J Epidemiol.* 2007;165(12):1372–1379. doi:10.1093/aje/kwm032
- Axelsson J, Rylander L, Rignell-Hydbom A, Silfver KÅ, Stenqvist A, Giwercman A. The impact of paternal and maternal smoking on semen quality of adolescent men. *PLoS One.* 2013;8(6):e66766. doi:10.1371/journal.pone.0066766
- Ramlau-Hansen CH, Toft G, Jensen MS, Strandberg-Larsen K, Hansen ML, Olsen J. Maternal alcohol consumption during pregnancy and semen quality in the male offspring: two decades of follow-up. *Hum Reprod.* 2010;25(9):2340–2345. doi:10.1093/humrep/deq140
- Kilcoyne KR, Mitchell RT. Effect of environmental and pharmaceutical exposures on fetal testis development and function: a systematic review of human experimental data. *Hum Reprod Update.* 2019;25(4):397–421. doi:10.1093/humupd/dmz004
- Bonde JP, Flachs EM, Rimborg S, et al. The epidemiologic evidence linking prenatal and postnatal exposure to endocrine disrupting chemicals with male reproductive disorders: a systematic review and meta-analysis. *Hum Reprod Update.* 2016;23(1):104–125. doi:10.1093/humupd/dmw036
- Nybo Andersen AM, Olsen J. The Danish national birth cohort: selected scientific contributions within perinatal epidemiology and future perspectives. *Scand J Public Health.* 2011;39(7):115–120. doi:10.1177/1403494811407674
- Olsen J, Melbye M, Olsen SF, et al. The Danish national birth cohort—its background, structure and aim. *Scand J Public Health.* 2001;29(4):300–307. doi:10.1177/14034948010290040201
- Ebert JF, Huibers L, Christensen B, Christensen MB. Paper- or web-based questionnaire invitations as a method for data collection: cross-sectional comparative study of differences in response rate, completeness of data, and financial cost. *J Med Internet Res.* 2018;20(1):e24. doi:10.2196/jmir.8353
- Monitoring Smoking Habits in the Danish Population 2015 (Danskernes rygevaner 2015) [homepage on the Internet]. Danish Health Authority, Danish Lung Association, Danish Heart Foundation, Danish Cancer Society. Available from: <https://www.sst.dk/da/udgivelser/2016/danskernes-rygevaner-2015>. Accessed August 20, 2016

33. Eskildsen A, Dalgaard VL, Nielsen KJ, et al. Cross-cultural adaptation and validation of the danish consensus version of the 10-item perceived stress scale. *Scand J Work Environ Health*. 2015;41(5):486–490. doi:10.5271/sjweh.3510
34. Wise LA, Mckinnon C, Wesselink A, Rothman KJ, Hatch EE. Sleep and male fecundity in a north American preconception cohort study. *Fertil Steril*. 2016;106(3):e79. doi:10.1016/j.fertnstert.2016.07.231
35. Jakobsen P & Bach E. Work Environment and Health in Denmark 2012 (Arbejdsmiljø og helbred i Danmark 2012). The National Research Center for the Working Environment (NFA). 2013. ISBN: 978-87-7904-253-7.
36. Ramlau-Hansen CH, Thulstrup AM, Bonde JP, Ernst E. Is self-measuring of testicular volume by a Prader orchidometer a valid method? *Fertil Steril*. 2007;87(6):1480–1482. doi:10.1016/j.fertnstert.2006.11.032
37. Jensen MS, Nørgaard-pedersen B, Toft G, et al. Phthalates and perfluorooctanesulfonic acid in human amniotic fluid: temporal trends and timing of amniocentesis in pregnancy. *Environ Health Perspect*. 2012;120(6):897–903. doi:10.1289/ehp.1104522
38. Gustafsson P, Rylander L, Lindh CH, Jönsson BAG. Vitamin D status at birth and future risk of attention deficit/hyperactivity disorder (ADHD). *PLoS One*. 2015;10:1–9. doi:10.1371/journal.pone.0140164
39. Lindh CH, Rylander L, Toft G, et al. Blood serum concentrations of perfluorinated compounds in men from Greenlandic Inuit and European populations. *Chemosphere*. 2012;88(11):1269–1275. doi:10.1016/j.chemosphere.2012.03.049
40. Gyllenhammar I, Glynn A, Jönsson BAG, et al. Diverging temporal trends of human exposure to bisphenols and plastizisers, such as phthalates, caused by substitution of legacy EDCs? *Environ Res*. 2017;153:48–54. doi:10.1016/j.envres.2016.11.012
41. Kalliokoski O, Jellestad FK, Murison R. A systematic review of studies utilizing hair glucocorticoids as a measure of stress suggests the marker is more appropriate for quantifying short-term stressors. *Sci Rep*. 2019;9(1):1–14. doi:10.1038/s41598-019-48517-2
42. Sauvé B, Koren G, Walsh G, Tokmakejian S, Van Uum SHM. Measurement of cortisol in human hair as a biomarker of systemic exposure. *Clin Investig Med*. 2007;30(5):183–192. doi:10.25011/cim.v30i5.2894
43. WHO. *Examination and Processing of Human Semen*. V. World Health; 2010.
44. Aleksander G, Marcello S, Jaana L, Jens Peter EB. Quality assurance of semen analysis in multicenter studies Quality assurance of semen analysis in multicenter studies. *Scand J Work Environ Health*. 1999;25(1):23–25.
45. Palacios ER, Clavero A, Gonzalvo MC, et al. Acceptable variability in external quality assessment programmes for basic semen analysis. *Hum Reprod*. 2012;27(2):314–322. doi:10.1093/humrep/der413
46. Hart RJ, Doherty DA, McLachlan RI, et al. Testicular function in a birth cohort of young men. *Human Reprod*. 2015;30(12):2713–2724. doi:10.1093/humrep/dev244
47. Priskorn L, Nordkap L, Bang AK, et al. Average sperm count remains unchanged despite reduction in maternal smoking: results from a large cross-sectional study with annual investigations over 21 years. *Human Reprod*. 2018;33(6):998–1008. doi:10.1093/humrep/dey090
48. Cooper TG, Noonan E, von Eckardstein S, et al. World Health Organization reference values for human semen characteristics. *Human Reprod Update*. 2009;16(3):231–245. doi:10.1093/humupd/dmp048
49. Iwamoto T, Nozawa S, Mieno MN, et al. Semen quality of 1559 young men from four cities in Japan: a cross-sectional population-based study. *BMJ Open*. 2013;3:4–8. doi:10.1136/bmjopen-2012-002222
50. Iwamoto T, Nozawa S, Yoshiike M, et al. Semen quality of fertile Japanese men: a cross-sectional population-based study of 792 men. *BMJ Open*. 2013;3:1–9. doi:10.1136/bmjopen-2012-002223
51. Axelsson J, Rylander L, Rignell-Hydbom A, Lindh CH, Jönsson BAG, Giwercman A. Prenatal phthalate exposure and reproductive function in young men. *Environ Res*. 2015;138:264–270. doi:10.1016/j.envres.2015.02.024
52. Mocarelli P, Gerthoux PM, Needham LL, et al. Perinatal exposure to low doses of dioxin can permanently impair human semen quality. *Environ Health Perspect*. 2011;119(5):713–718. doi:10.1289/ehp.1002134
53. Vested A, Ramlau-Hansen CH, Olsen SF, et al. In utero exposure to persistent organochlorine pollutants and reproductive health in the human male. *Reproduction*. 2014;148(6):635–646. doi:10.1530/REP-13-0488
54. Straker L, Mountain J, Jacques A, et al. Cohort profile: the Western Australian pregnancy cohort (raine) study—generation 2. *Int J Epidemiol*. 2017;46(5):1384–1385j. doi:10.1093/ije/dyw308
55. Larsen PS, Kamper-jørgensen M, Adamson A, et al. Pregnancy and birth cohort resources in Europe: a large opportunity for aetiological child health research. *Paediatr Perinat Epidemiol*. 2013;27(4):393–414. doi:10.1111/ppe.12060
56. Jensen TK, Jørgensen N, Punab M, et al. Association of in utero exposure to maternal smoking with reduced semen quality and testis size in adulthood: a cross-sectional study of 1770 young men from the general population in five European countries. *Am J Epidemiol*. 2004;159(1):49–58. doi:10.1093/aje/kwh002
57. Cohn BA, Overstreet JW, Fogel RJ, Brazil CK, Baird DD, Cirillo PM. Epidemiologic studies of human semen quality: considerations for study design. *Am J Epidemiol*. 2002;155(7):664–671. doi:10.1093/aje/155.7.664
58. Stewart TM, Liu DY, Garrett C, Brown EH, Baker HWG. Recruitment bias in studies of semen and other factors affecting pregnancy rates in fertile men. *Human Reprod*. 2009;24(10):2401–2408. doi:10.1093/humrep/dep215
59. Andersen AG, Jensen TK, Carlsen E, et al. High frequency of sub-optimal semen quality in an unselected population of young men. *Human Reprod*. 2000;15(2):366–372. doi:10.1093/humrep/15.2.366
60. Eustache F, Auger J, Cabrol D, Jouannet P. Are volunteers delivering semen samples in fertility studies a biased population? *Human Reprod*. 2004;19(12):2831–2837. doi:10.1093/humrep/deh503
61. Hernán MA, Hernández-Díaz S, Robins JM. A structural approach to selection bias. *Epidemiology*. 2004;15(5):615–625. doi:10.1097/01.ede.0000135174.63482.43
62. Hærviig KK, Hoyer BB, Giwercman A, et al. Fetal exposure to paternal smoking and semen quality in the adult son [published online ahead of print, 2020 Mar 9]. *Andrology*. 2020.
63. Tøttenborg S, Glazer C, Hærviig K, et al. Semen quality among young healthy men taking protein supplements [Accepted for publication]. *Fertil Steril*. 2020. doi:10.1016/j.fertnstert.2020.02.103

## Clinical Epidemiology

### Publish your work in this journal

Clinical Epidemiology is an international, peer-reviewed, open access, online journal focusing on disease and drug epidemiology, identification of risk factors and screening procedures to develop optimal preventative initiatives and programs. Specific topics include: diagnosis, prognosis, treatment, screening, prevention, risk factor modification,

systematic reviews, risk & safety of medical interventions, epidemiology & biostatistical methods, and evaluation of guidelines, translational medicine, health policies & economic evaluations. The manuscript management system is completely online and includes a very quick and fair peer-review system, which is all easy to use.

Submit your manuscript here: <https://www.dovepress.com/clinical-epidemiology-journal>

Dovepress