

Antimicrobial activity, toxicity and accumulated hard-tissue debris (AHTD) removal efficacy of several chelating agents

Journal:	<i>International Endodontic Journal</i>
Manuscript ID	IEJ-19-00829.R3
Manuscript Type:	Original Scientific Article
Keywords:	biofilm, chelating agents, confocal laser scanning microscopy, irrigation, Micro-CT

SCHOLARONE™
Manuscripts

Antimicrobial activity, toxicity and accumulated hard-tissue debris (AHTD) removal efficacy of several chelating agents

Abstract

Aim To evaluate the antimicrobial, toxicity, and cleaning effectiveness of ethylenediaminetetraacetic acid (EDTA) and Maleic acid (MA) alone and combined with cetrimide (CTR).

Methodology Cytotoxic and genotoxic effects were assessed on Chinese hamster cells V79 using the MTT, clonogenic, and micronucleus assays, respectively. The bacterial inhibitory and bactericidal concentrations (MIC and MBC, respectively) were determined on a strain of *E. faecalis*. Antimicrobial tests were performed on a biofilm model after treatment with the chelating agents by using a biofilm eradication concentration (MBEC) and confocal laser scanning microscope (CLSM) assays. Quantification of cell biomass and percentage of live and dead cells in the biomass was assessed for each group. The percentage reduction of accumulated hard tissue debris (AHTD) after root canal preparation and final irrigation protocols was evaluated by micro-CT. Statistical tests of one-way analysis of variance (ANOVA), Bonferroni test, Kruskal-Wallis test, Dunn's multiple comparison test, and Wilcoxon matched-pairs signed-rank tests were used.

Results CTR alone as well as in combination with EDTA and MA at dilutions of 1/10 and 1/100 were significantly toxic as compared to untreated control ($p < 0.001$). All tested mixtures were nontoxic at a dilution of 1/1000. EDTA retained a weak inhibitory and bactericidal effect against planktonic cells, while MA inhibited cells growth and killed 99.9% of the cells when diluted. CTR revealed the most prominent effect, being inhibitory and bactericidal, also when diluted. Cetrimide alone or combined with EDTA was able to remove, respectively, 40% ($p < 0.01$) and 60% ($p < 0.001$) of the entire biomass after 1 min. Conversely, MA alone and in combination with CTR had not a significant effect on biomass reduction. After final irrigation, the AHTD volume was significantly decreased in all groups ($p < 0.05$). EDTA + CTR and MA + CTR were associated with a significant reduction in the percentage of AHTD on the entire root canal compared to the same solutions without surfactant.

Conclusions 7% MA was less cytotoxic in comparison to 17% EDTA. The addition of CTR to EDTA and MA removed accumulated hard-tissue debris effectively from the canal walls and increased their antimicrobial activity when compared to the same solutions without detergents.

Keywords: biofilm; chelating agents; confocal laser scanning microscopy; irrigation; Micro-CT.

Introduction

The main goal of root canal treatment is to optimize root canal disinfection and to prevent re-infection of the root canal space after treatment (Zehnder 2006). Cleaning and shaping of the root canal system are considered the key requirements in eliminating microorganisms. Mechanical instrumentation of the root canal system produces an irregular, granular layer covering the canal walls known as the smear layer (McComb & Smith 1975), which consists of inorganic dentine debris, pulp tissues, severed odontoblastic processes, necrotic debris, microorganisms, and their metabolic products (Torabinejad *et al.* 2002). Studies have demonstrated that removal of smear layer improves the fluid-tight seal of filled root canals, allows the elimination of bacteria within the dentinal tubules and facilitates the penetration of intracanal medicaments, irrigating agents and sealers into the dentinal tubules, increases the bond strength of resin sealers to root canal dentine, resulting in a significantly better apical seal (White *et al.* 1984, Cergneux *et al.* 1987, Ørstavik & Haaapasalo 1990, Gettleman *et al.* 1991, Shahravan *et al.* 2007).

Currently, there is no single irrigating solution capable of killing bacteria, dissolving organic tissue, and removing the smear layer simultaneously (Giardino *et al.* 2018). Hence, various studies have suggested the use of a combination of irrigants (O'Connell *et al.* 2000, Teixeira *et al.* 2005).

Combined application of ethylenediaminetetraacetic acid (EDTA) and sodium hypochlorite (NaOCl) is frequently recommended for effective removal of the smear layer from the root canal system (Zehnder *et al.* 2005). Also, irrigating agents intended for endodontic use should be biocompatible when applied as intended (Peters 2013).

Conflicting results on the biofilm disruption or antimicrobial effects of EDTA have been demonstrated (Heling *et al.* 1999, Arias-Moliz *et al.* 2008, Ballal *et al.* 2011, Ordinola-Zapata *et al.* 2012). The only antibacterial property associated with EDTA is to weaken the bacterial cell membrane without killing the cell and thus promoting biofilm detachment (de Almeida *et al.* 2016). EDTA *per se* is not an effective antimicrobial agent (Reidmiller *et al.* 2006). However, since it

1
2
3 disperses biofilms (Cavaliere *et al.* 2014) and permeabilizes cell membranes (Chávez de Paz 2010),
4
5 it could aid in sensitizing biofilms to antimicrobials.
6
7

8 Regarding its biocompatibility, it has been shown that extrusion of even a low concentration of
9
10 EDTA solution through the apical constriction can not only lead to an irreversible decalcification of
11
12 the periapical bone but can also have consequences for neuroimmunological regulatory mechanisms
13
14 (inflammatory reactions and immune response) involved in periapical lesion even in lower
15
16 concentrations than those used in endodontics (Segura *et al.* 1996). Also, many studies conducted
17
18 using cytotoxicity assays on cell cultures have reported the cytotoxic effects of EDTA at various
19
20 concentrations (Malheiros *et al.* 2005, Ballal *et al.* 2009a). Using cell viability – MTT assay and
21
22 genotoxicity, it has been reported that EDTA was the least cytotoxic of irrigation solutions, used
23
24 either individually or in combination (Botton *et al.* 2016), which is in disagreement with previous
25
26 studies mentioned above.
27
28
29
30
31

32 Maleic acid (MA) is a recently proposed chelating agent for the removal of the smear layer from the
33
34 root canal system. At 7% concentration, MA was associated with better smear layer removal
35
36 (especially in the apical third) and less toxicity than 17% EDTA (Ballal *et al.* 2009a,b, Ballal *et al.*
37
38 2019a).
39
40

41
42 The high surface tension of chelating agents (Giardino *et al.* 2006), could represent a further
43
44 drawback, because of preventing its smear layer removal ability in the less accessible areas of the
45
46 root canal space. Due to these limitations, recently, new chelating solutions alone or combined with
47
48 surface-active agents have been investigated (Dunavant *et al.* 2006, Liu *et al.* 2015, Ballal *et al.*
49
50 2018). It was reported that cetrimide (CTR) added to the EDTA decreases the surface tension of the
51
52 solution (Yilmaz *et al.* 2011), increasing the penetration of the mixture into the dentinal tubules and
53
54 even into the uninstrumented areas of the root canal system. EDTA+CTR also displayed
55
56 antibacterial activity, decreasing the biofilm mechanical stability by destabilization of the cohesive
57
58 forces of the biofilm (Arias-Moliz *et al.* 2010). Interestingly, 7% MA alone or in association with
59
60

1
2
3 CTR also had antimicrobial activity against *E. faecalis* from 30 seconds of exposure onward
4
5 (Ferrer-Luque *et al.* 2010). Conversely, in the study mentioned above (Ferrer-Luque *et al.* 2010),
6
7 the combination of EDTA and CTR eradicated biofilm grown in the MBEC-HTP device after 1
8
9 minute of contact.
10
11

12
13 In order to investigate the suitability of these recently proposed irrigants for the disinfection of the
14
15 root canal system, this study aimed to evaluate the antimicrobial activity, the toxicity, and cleaning
16
17 effectiveness of EDTA and MA alone and in combination with a detergent (CTR).
18
19

20
21 The null hypothesis tested was that the addition of CTR to EDTA or MA does not affect their
22
23 antimicrobial activity, toxicity, and cleaning efficiency.
24
25

26 **Materials and Methods**

27 ***Preparation of the test agents***

28
29 For this study, freshly prepared chelating solutions and the concentrations assayed were:
30
31

32
33 17% EDTA (Carlo Erba Reagents Srl, Milano, Italy)

34
35 17% EDTA + 0.5% CTR (Sigma-Aldrich, Milano, Italy)

36
37 7% MA (Carlo Erba Reagents Srl, Milano, Italy)

38
39 7% MA + 0.5% CTR

40
41 0.5% CTR

42
43 The 17% EDTA and 7% MA solutions were prepared individually and used as such, or combined
44
45 adding 0.5 g of CTR to 100 mL of each chelating solution ((w/v %), and adjusted to pH 7.5 and 3.3,
46
47 respectively. The solution of 0.5% CTR was obtained by adding 0.5 g of detergent to 100 mL of
48
49 deionized water.
50
51

52 ***Cytotoxicity and genotoxicity assessment***

53 ***Cell culture and maintenance***

1
2
3 Chinese hamster lung fibroblast (V79) cells were procured from NCCS, Pune, India, and
4
5 maintained as per ATCC guidelines. The cells were cultured in Dulbecco's Modified Eagle Medium
6
7 (DMEM; AT151, Himedia Laboratories, Mumbai, India) supplemented with 10 % foetal bovine
8
9 serum (RM9955, Himedia Laboratories) and 1× antibiotic antimycotic mix (A002, Himedia
10
11 Laboratories) and maintained at 37 °C in a 5% CO₂ incubator (Galaxy 170S, Eppendorf, Hamburg,
12
13 Germany).

14 15 16 17 **Preparation of test solutions & MTT assay**

18
19 The test solutions were freshly diluted in DMEM on the day of experimentation. The effects of
20
21 various dilutions of the drugs, namely 1/10; 1/50; 1/100; 1/500 and 1/1000 were tested for its effect
22
23 on cell viability by MTT assay as described previously (Mosmann 1983). Briefly, 10⁴ cells per 100
24
25 µL were seeded in 96-well cell culture grade plates and allowed to attach overnight in a 5% CO₂
26
27 incubator maintained at 37°C. The next day, the cells were treated with various dilutions of the
28
29 drugs for 15 min that were prepared in pre-warmed DMEM. After 15 min of incubation with the
30
31 drugs, cells were incubated with 1mg/mL MTT reagent prepared in DMEM devoid of phenol red
32
33 and serum. Cells were incubated with MTT reagent for four hours following which the formazan
34
35 crystals was dissolved by adding 100 µL of DMSO. The optical density (OD) of each well was
36
37 obtained at 570 nm using a multi-well plate reader. Cell viability was determined by the following
38
39 formula:
40
41
42
43

44
45 % Viability = [(test OD- blank OD)/ (control OD- blank OD)] ×100 where, control corresponds to
46
47 untreated cells.

48 49 **Clonogenic assay**

50
51 This assay was carried out using the original method of Puck & Marcus (1955). A known number
52
53 of cells were seeded on 6-cm petri-dish and cultured overnight for attachment. Six hundred cells
54
55 were seeded for treatment groups receiving 1:10 and 1:100 dilutions of the drugs, whereas 200 cells
56
57 were seeded for control cell and 1:1000 dilutions. Next, cells were treated with the mentioned
58
59
60

1
2
3 dilutions of the test agents and incubated at 37 °C for 15 min. After treatment, the drug-containing
4
5 DMEM was removed, and the cultures were further incubated at 37 °C for 12 days in DMEM to
6
7 allow colony formation. Fixing and staining of the colonies were done using 0.1% crystal violet
8
9 dissolved in methanol. Stained colonies were counted manually, and the surviving fraction in each
10
11 treatment group was determined by the expression given below.
12
13

14
15 Plating efficiency; $PE = (\text{number of colonies counted} / \text{number of cells seeded}) \times 100$ where PE is
16
17 calculated using the number of colonies obtained in the untreated or control cells.
18
19

20
21 Surviving fraction; $SF = \{[\text{number of colonies counted}] / [\text{number of cells seeded} \times (PE/100)]\}$.
22

23 ***Assessment of Genotoxicity using a Micronucleus assay***

24
25 Evaluation of genotoxicity was carried out by employing an *in vitro* micronucleus assay. For this,
26
27 6×10^5 cells were seeded on 6-cm culture dishes and allowed to attach overnight. On the following
28
29 day, cells were treated with the various test solutions (1:1000 dilution in DMEM) for 15 min. Next,
30
31 the drug-containing media was removed and cells incubated in cytochalasin B (3 µg/mL) in DMEM
32
33 for 24 h and further processed as described earlier (Ballal *et al.* 2019b). Briefly, after treatment, the
34
35 cells were harvested, submitted to hypotonic shock in 0.075 M KCl and were fixed with ice-cold
36
37 fixing solution (containing 3:1 methanol:glacial acetic acid). Fixed cells were smeared on clean
38
39 glass slides and stained with acridine orange dye. For analysis, 1000 binucleated cells were scored
40
41 under a fluorescence microscope (BX51, Olympus, Japan) for the presence of micronuclei.
42
43
44
45

46 ***Assessment of antimicrobial activity***

47 ***Bacterial strains and culture media***

48
49 *Enterococcus faecalis* (*E. faecalis*) strain ATCC 4083, stored at -80°C before analysis, was used
50
51 because it was primarily isolated from the root canal of a pulpless tooth (Stuart *et al.* 2006). Then,
52
53 before use, the strain was thawed and reconstituted in Tryptic Soy Agar (TSA, Biomérieux, Marci
54
55 l'Etoile, France) for 24 hours at 37°C .
56
57
58
59
60

Determination of Minimum Inhibitory Concentration (MIC) and Minimum Bactericidal Concentration (MBC)

Minimum inhibitory concentration (MIC) and Minimum bactericidal concentration (MBC) of the chelating agents under investigation were determined by the broth microdilution method, following the guidelines of the European Committee on Antimicrobial Susceptibility Testing (http://www.eucast.org/fileadmin/src/media/PDFs/EUCAST_files/MIC_testing/Edis5.1_broth_dilution.pdf). A microbial suspension at an optical density equal to 0.5 McFarland standard in Muller Hinton broth (MHB, Biolife Italiana S.r.l. Milano, Italy) was prepared from *E. faecalis* ATCC 4083. After obtaining a microbial load of 5×10^6 CFU/ml using appropriate dilutions, 10 μ l of each suspension was inoculated in a 96-wells microplate containing 90 μ l of a serial 2-fold dilution of the chelating solutions (17% EDTA, 17% EDTA + 0.5 CTR, 7% MA, 7% MA + 0.5 CTR, 0.5 CTR). Bacterial growth in the control group was performed by inoculating the *E. faecalis* suspension in MHB. MIC values were read after 24 h of incubation at 37°C. The MBC, defined as the lowest concentration of an antimicrobial substance able to kill 99.9% of the initial inoculum, was determined by subculturing 10 μ l of microbial suspension from wells showing no visible growth in the MIC tests. Similarly, MBC values were read after 24 h of incubation at 37°C.

Determination of Minimum biofilm eradication concentrations (MBEC)

For biofilm susceptibility to chelating agents, the MBECTM High-throughput (HTP) assay (Innovotech, Edmonton, Alberta, Canada) was used. The wells were filled with 150 μ L of Brain Heart Infusion (BHI) broth (Biolife Italiana S.r.l. Milano, Italy) inoculated with 10^7 CFU/mL of *E. faecalis* resuspended from an overnight culture on Tryptic Soy Agar (TSA Biolife Italiana S.r.l.) and incubated for 24 h at 37 °C to establish a biofilm on the pegs located on the lid of the device. After the incubation, the lid was placed for approximately 30 seconds in a sterile 96 wells microplate containing 200 μ L of sterile saline solution (rinse plate) to remove unattached cells. Afterward, the lid was placed on a “challenge plate” containing 200 μ L of a serial 2-fold dilution of

1
2
3 the five chelating solutions for 1 and 5 minutes while agitating on an orbital shaker and moved
4
5 again in a new rinse plate for 30' to neutralize the test solutions.
6
7

8 Then, the lid was placed in a new 96 wells microplate containing 200 μL of BHI broth and placed in
9
10 a dry stainless steel tray which **sitting** in a water bath and sonicated at maximum power for 10' to
11
12 dislodge the remaining biofilm on the pegs. The lid was then removed, replaced with a non-pegged
13
14 lid, and the plate incubated overnight at 37 °C. MBEC values were determined by visually checking
15
16 the wells for turbidity. Clear wells indicated **complete** biofilm eradication.
17
18
19

20 For viable cell counting, three pegs were removed from the MBECTM – HTP lid biofilm treated
21
22 devices to both established periods, washed three times with sterile saline solution to remove
23
24 unattached bacteria then placed in sterile microtubes and sonicated (VWR International, Radnor,
25
26 PA, USA) at maximum power for 10 minutes. Supplemental pegs treated with sterile saline solution
27
28 serve as positive controls. The resulting suspensions were serially diluted, and 10 μL of each
29
30 dilution was seeded in TSA plates and grown overnight at 37°C for colony counting.
31
32
33
34

35 ***Confocal Laser Scanning Microscopy (CLSM) analysis***

36
37
38 *E. faecalis* biofilm was cultured on uncoated 10-mm diameter glass slides (VWR International Srl,
39
40 Milano, **Italy**) placed in 24-well microplates for 48 h, by inoculating bacterial cells in 1mL of BHI
41
42 broth to a final concentration of 10⁷ CFU/mL. At the end of the incubation time, the culture medium
43
44 was removed, and two washes with sterile saline were performed to remove non-adherent bacteria.
45
46
47 Afterward, the biofilm was treated with each of the testing solutions for 1 and 5 minutes (controls
48
49 were treated with sterile saline), then the solutions were removed, and the wells were washed twice
50
51 with saline.
52
53

54 Glass slides were then stained with FilmtracerTM LIVE/DEADTM Biofilm Viability Kit (Thermo
55
56 Fisher Diagnostics SpA, Rodano, **Italy**), prepared according to manufacturer instructions. Each
57
58
59
60

1
2
3 sample was stained with 30 μL of staining solution by incubating for 15 min at room temperature in
4
5 the dark.
6
7

8
9 Later, stained biofilms were thoroughly rinsed in physiological solution and the images acquired
10
11 with a Confocal Laser Scanning Microscope TCS SP8 (Leica Microsystems CMS GmbH,
12
13 Mannheim, **Germany**) using a 20 \times dry objective (HC PL FLUOTAR 20 \times /0.50 DRY). Sequential
14
15 optical sections were gathered along the z-axis for the entire thickness of the biofilm. Images from
16
17 at least three random areas were acquired for each sample. The selected images were processed with
18
19 Las X (Leica Microsystems CMS GmbH) and analyzed with Fiji software (Fiji, ImageJ, Wayne
20
21 Rasband, NIH **Bethesda, Maryland, USA**). The quantification of cells biomass was expressed in
22
23 μm^3 . The percentage of live and dead microorganisms in the biomass was assessed in each group.
24
25
26

27 ***Quantification of accumulated hard-tissue debris (AHTD) using Micro-CT***

28 ***Sample size calculation***

29
30
31
32
33 The effect size of AHTD removal for this study was 91%, based on a previous study with similar
34
35 methodology (Silva *et al.* 2019), and was combined with a power $\beta = 0.95$, and $\alpha = 0.05$ into an F
36
37 test family for one-way ANOVA (G*Power 3.1.7 software for Windows; Heinrich Heine,
38
39 Universität Düsseldorf, **Düsseldorf, Germany**). The minimum sample size to reveal statistical
40
41 significance among groups amounted to twenty-six samples in total. Additional samples were used,
42
43 in order to compensate for possible sample loss.
44
45
46

47 ***Root canal selection and preparation***

48
49
50
51 The experimental protocols were approved by the institutional ethics committee for the use of
52
53 human extracted teeth (IEC 519/2019). A total of fifty maxillary incisors with straight root, single
54
55 **relatively round canal in cross-section, as established preliminarily by using a micro-CT method**
56
57 **(Peters *et al.* 2010, Versiani *et al.* 2019)**, and similar root length were selected from a pool of
58
59 extracted teeth. Each tooth was radiographed in both mesiodistal and buccolingual directions to
60

1
2
3 verify the presence of a single canal with closed apex, the absence of intra-radicular resorption,
4 presence of caries, restoration, or fractures or root canal filling. The teeth were stored in 0.2%
5 sodium azide (Millipore Sigma, St. Louis, MO, USA) at 4°C until use. The teeth were decoronated
6 at the cementoenamel junction to obtain a standardized root length of 12 mm. Before
7 instrumentation, the samples were subjected to a preoperative scanning procedure by using a micro-
8 CT device (Skyscan 1176, Bruker, Kontich, Belgium). Each tooth was scanned separately at an
9 isotropic resolution of 8.92 µm. The scanner parameters were set at 90 kV, 280 µA, 0.5° rotation
10 around the vertical axis, and rotation step of 0.4°, using a 0.1-mm-thick copper filter.
11
12

13
14
15
16
17
18
19
20
21
22 The volume of interest was selected extending from the cemento-enamel junction to the apex of the
23 root, resulting in the acquisition of 671-675 transverse cross-sections per tooth. Aiming to create a
24 similar sample among the groups, ten anatomically pair-matched teeth, presenting a single oval-
25 shaped canal, were selected based on similar morphological features of the root canal such as
26 length, volume, and configuration to compose the experimental groups (De-Deus *et al.* 2019). The
27 volume of the initial pre-shaping root canal for each element was calculated, and the five groups
28 were compared to verify that the samples did not present anatomical or structural differences that
29 could create disparities between groups. No statistically significant values between the groups,
30 regarding the initial volume of each root canal, were found (One-way ANOVA, $P=0.46$); therefore,
31 the samples were homogeneous for initial volume, then distributed among the five study groups and
32 used for the shaping procedures.
33
34
35
36
37
38
39
40
41
42
43
44
45
46
47

48 The apical third of each tooth was sealed with a layer of cyanoacrylate adhesive to simulate an *ex-*
49 *vivo* closed-end model (Giardino *et al.* 2017). The glide path in the samples of all the groups was
50 accomplished with a 15 K-file (Dentsply Sirona, Ballaigues, Switzerland) until the apical foramen.
51 Working length was established by inserting a size 10 K-file (Dentsply Sirona) into each root canal
52 until it was just visible at the apical foramen (observed using magnifying loupes) then subtracting
53 1mm from the recorded length. Each sample, then, was shaped mechanically to 1mm before of the
54
55
56
57
58
59
60

1
2
3 apical foramen (established working length) using the NiTi rotary system ProTaper Next (Dentsply
4 Sirona) to a size 30,07 taper. At each instrument changeover, the canal was irrigated with 1 mL of
5 5.25% NaOCl (Ogna Laboratori Farmaceutici, Muggiò, Italy) for 1 min using a syringe with a 30-
6 gauge side-vented needle (Max-i-Probe; Dentsply Rinn, Elgin, IL, USA) placed at 2 mm from the
7 working length, for a total of 5 mL of 5.25% NaOCl. After root canal preparation and irrigation
8 with 5.25% NaOCl was accomplished, the teeth were submitted to a second scan, applying the
9 parameter settings above mentioned.
10
11
12
13
14
15
16
17
18
19
20

21 *Final irrigation protocols*

22
23 After root canal preparation, each specimen was randomly assigned to one of the five experimental
24 groups (n=10), according to the final irrigation protocol:
25

26 Group 1- 5.25% NaOCl followed by saline
27

28 Group 2- 5.25% NaOCl followed by 7% MA
29

30 Group 3- 5.25% NaOCl followed by 7% MA + 0.5% CTR
31

32 Group 4- 5.25% NaOCl followed by 17% EDTA
33

34 Group 5- 5.25% NaOCl followed by 17% EDTA + 0.5% CTR
35

36 For final irrigation, in all the groups, each specimen was irrigated with 2 mL of test agents assigned
37 for 2 min. To remove chemical residues, the canals were flushed with 5 mL of distilled water and
38 dried with size 30 absorbent paper points (Dentsply Sirona).
39

40 Then, a third scan was performed in all samples included in the five groups listed above after final
41 irrigation with the assigned chelating agent to quantify the accumulation of hard-tissue debris. The
42 images were reconstructed using a scanner software (NRecon 1.6.10.4, Skyscan, Bruker, Kontich,
43 Belgium) with a beam hardening correction of 40% and ring artifact correction of 10.
44
45

46 To ensure that the three scans performed for each element could be analyzed with the same
47 references, the Data Viewer software (Data Viewer v.1.5.1, Bruker) was used.
48
49
50
51
52
53
54
55
56
57
58
59
60

1
2
3 The segmentation threshold to separate dentine and debris from the root canal space and the
4 quantitative analyses were then performed by using CTAn software (CTAn v.1.14.4, Bruker) to
5 calculate quantitative parameters and CTVol (CTVol v.2.2.3.0, Bruker) to reconstruct visual 3D
6 models. By using CTAn software, it was also possible to obtain the volumetric values of the debris
7 present in the root canal by calculating in percentage the reduction of debris before and after the
8 final irrigation in each group. The total volume of AHTD was calculated in cubic millimeter (mm³)
9 and expressed as the percentage of the entire canal system volume after preparation (vol %).

19 ***Statistical analysis***

20
21
22 The normality of data distributions was assessed using the D'Agostino & Pearson's test and the
23 Shapiro–Wilk test. For data distributed normally, results were presented as means and standard
24 deviations (SD), and one-way analysis of variance (ANOVA) was used together with the post-hoc
25 Tukey Multiple comparison test for between-group comparisons. For toxicity assays, between-
26 group comparisons were made using a one-way ANOVA followed by Bonferroni's correction. For
27 assessing differences in root canal volume before and after preparation, and in AHTD removal,
28 within-group comparisons were performed using the paired Student t-test. For data not following a
29 normal distribution, among-group comparisons were assessed by using the Kruskal-Wallis test and
30 the Dunn's multiple comparison test, and the Wilcoxon matched-pairs signed-rank test was used for
31 within-group comparisons. Statistical analysis was undertaken using the software GraphPad Prism
32 5.0 (GraphPad Software, La Jolla, CA, USA). The significance threshold was set at $P = 0.05$.

48 **Results**

51 ***Toxicity assessment***

52
53
54 Changes in the cell viability in V79 cells in the presence of different dilutions of the test compounds
55 were determined by MTT Assay. The viability of cells in the presence of the test compounds is
56 shown in Figure 1. A group-wise statistical comparison for the effect of different dilutions of the
57
58
59
60

1
2
3 **drugs on cell viability is shown in Table 1.** Cells treated with each of the test agents at a dilution of
4
5 1:10 exhibited profound toxicity showing the lowest viability when compared to the other dilutions.
6
7 Apart from EDTA, cells receiving the test agents at a dilution of 1:50 also reduced cell viability. On
8
9 the other hand, cells **had** a gradual increase in viability with increasing dilutions of the test
10
11 compounds with 1:100, 1:500 and 1:1000 dilution. **Treated** cells **had** a significant ($p < 0.001$)
12
13 increase in cell viability when compared to the group of cells receiving 1:10 dilution of each of the
14
15 test agents (Fig. 1).
16
17
18
19

20 The PE of the V79 cells in the present study was found to be 92.7 ± 3.51 . **The SF of V79 cells upon**
21
22 **treatment with the various test solutions is summarized in Table 2.** Representative crystal violet-
23
24 stained colonies are shown in Figure 2. CTR alone, as well as in combination with EDTA and MA
25
26 at dilutions of 1/10 and 1/100, were significantly toxic ($p < 0.001$ when compared to controls), as
27
28 these did not allow colony formation. Similarly, EDTA and MA at dilution 1/10, too, resulted in a
29
30 significant decrease in SF (**Table 2**). All tested mixtures were nontoxic and showed no significant
31
32 difference at a dilution of 1/1000 (**Table 2**).
33
34
35

36 The genotoxic potential of CTR, EDTA, MA alone, or in combination, was assessed by
37
38 micronucleus assay. A 1/1000 dilution (dose selected based on viability studies) of each of the test
39
40 agents was investigated for their genotoxic potential. Data indicated that the test agents did not
41
42 exhibit a significant increase in micronucleus frequency as compared to control cells showing their
43
44 non-genotoxic nature at this tested dilution (Fig. 3).
45
46
47

48 ***Antimicrobial activity***

49
50
51 Employing the broth microdilution method (MIC and MBC), EDTA retained a weak inhibitory and
52
53 bactericidal effect against planktonic cells, while MA inhibited cells growth even when diluted 1:16
54
55 and killed 99.9% of the cells when diluted 1:8 (**Table 3**). CTR revealed the most prominent effect,
56
57 being inhibitory, also when diluted 1:1024 and bactericidal at 1:512. While the addition of EDTA
58
59 did not improve neither MIC nor MBC values of CTR, the addition of MA improved its bactericidal
60

1
2
3 activity of one dilution (Table 3). When MBEC assay was employed to assess the biofilm removal
4
5 activity of the surfactant agents, CTR was once again the most active agent, being able to remove
6
7 completely *E. faecalis* biofilm from the MBEC pegs diluted 1:8 and 1:32, respectively when applied
8
9 for 1' and 5' (Table 3). Only the addition of EDTA slightly improved CTR removal activity (Fig. 4,
10
11 5).

12
13
14 To assess the irrigating solutions ability to eradicate *enterococcal* sessile cells encased in an
15
16 exopolymeric matrix, mature biofilm was challenged for 1 and 5 minutes and analyzed using
17
18 CLSM.
19

20
21 Compared to the control, a significant biomass reduction was observed when EDTA was present in
22
23 the solution. CTR alone was able to remove 30-40% of the whole biomass and when added to
24
25 EDTA, was not able to improve the removal of the sessile cells. However, the percentage of dead
26
27 cells significantly increased when CTR was added to the irrigant solutions (Fig. 4, 6). Conversely,
28
29 MA displayed a lower bactericidal activity on biofilm cells (Fig. 4) and was the only molecule that
30
31 had a time-dependent activity, both when used alone or in combination.
32
33

34 35 *Accumulated hard tissue debris estimation*

36
37
38 By using micro-CT, it was possible to identify and measure AHTD after preparation and final
39
40 irrigation in the root canals for all the tested protocols. The data were distributed normally. Table 4
41
42 summarizes the mean values and standard deviations for the main parameters assessed. There was
43
44 no significant difference among groups both for pre-operative root canal volume ($P = 0.46$) and for
45
46 volume after root canal preparation ($P = 0.41$). The root canal volume was significantly increased in
47
48 all groups after preparation ($P < 0.01$). After preparation, there was no significant difference among
49
50 groups for AHTD volume ($P = 0.13$). After final irrigation, the AHTD volume was significantly
51
52 decreased in all groups ($P < 0.01$). The results were confirmed also expressing the AHTD data as %
53
54 of the total root canal volume (Table 4). Figure 7 shows the micro-CT images of the removal of
55
56 accumulated hard-tissue debris in the experimental groups, considering the whole canal.
57
58
59
60

1
2
3 The mean percentage of hard tissue debris removed by the different experimental solutions is shown
4 in Table 4. All the irrigating solutions were significantly superior to saline (control) in the overall
5 removal of AHTD. Significances for AHTD removal, and *P*-values of the among-group (ANOVA)
6 and between-group comparisons (unpaired Student's *t*-test) are listed in Table 5.
7
8
9

10 11 12 13 **Discussion**

14
15
16 The present study investigated the toxicity, antimicrobial activity, and AHTD removal of EDTA
17 and MA alone or in combination with CTR. Since the results of this study revealed that the addition
18 of CTR to EDTA or MA improved its antimicrobial activity and also AHTD removal efficiency, the
19 null hypothesis has to be rejected.
20
21
22

23
24
25 Cytotoxicity is one of the most important factors for assessing any adverse effect of the anti-biofilm
26 molecules before using them commercially for the prevention and removal of biofilm (Roy *et al.*
27 2018). The present work investigated various agents, namely, CTR, EDTA and MA alone, and CTR
28 in combination with EDTA and MA, for their cytotoxic potential. Viability analysis using MTT
29 assay showed that cells treated with the test agents alone or in combination at dilution 1/10 had the
30 highest cell killing rate. This could be attributed to their chemical property. CTR being a surfactant,
31 would readily disrupt cell membrane lipids resulting in the lysis of cells. EDTA is a strong metal
32 chelator and can readily remove essential divalent metal ions such as Ca²⁺ and Mg²⁺, causing
33 detachment of cells, and resulting in MTT reduction. The acidic nature of MA would contribute in a
34 major way to killing cells at the 1/10 dilution. With an increase in dilution of each of the test agents,
35 their toxic effect on cell viability, as shown by MTT assay, vanished.
36
37
38
39
40
41
42
43
44
45
46
47
48
49
50

51
52 The colony-forming assay is a gold standard assay (Franken *et al.* 2006) that has found profound
53 use in estimating the cytotoxicity of agents as it measures the reproductive capacity of cells after
54 they have undergone cellular insult. In the present investigation, V79 cells were tested for
55 clonogenicity after treatment with the test agents. Interestingly, CTR alone and in combination with
56
57
58
59
60

1
2
3 EDTA and MA at dilutions 1/10 and 1/100 did not allow colony formation. Although the MTT data
4 indicated the viability of greater than 60% for CTR alone and in combination with EDTA and MA,
5 the lack of colonies indicates their long term impact on cell reproducibility. EDTA and MA
6 treatment also reduced the clonal survival of V79 cells at 1/10 and 1/100 dilution but was less
7 severe when compared to CTR and its combination with EDTA and MA. All the test agents at
8 dilution 1/1000 were associated with colony formation similar to that of untreated/ control cells,
9 indicating their non-toxic nature at this particular dilution.
10
11
12
13
14
15
16
17
18
19

20 The formation of micronuclei is an indicator of DNA damage, and this is a sensitive method to
21 analyze the genotoxicity potential of any chemical agent (Nersesyan *et al.* 2016). Concerning to
22 genotoxicity, the drugs did not induce a significant rise in the frequency of micronuclei formation in
23 V79 cells, indicating its non-genotoxic nature at this tested concentration.
24
25
26
27
28
29

30 However, the assays used have several limitations when compared to *in vivo* conditions. Cell
31 cultures are generally more sensitive to the toxic effects of materials than "*in vivo*" tissues (Bajrami
32 *et al.* 2014); under *in vivo* conditions, substances are diluted with body fluids and their
33 concentration decreases (Labban *et al.* 2014); they are carried away from the lymph, blood, and
34 phagocytes of the vascular and lymphatic systems (Ballal *et al.* 2009a); in equal concentrations, the
35 cytotoxicity of materials decreases over time in the clinical setting compared to *in vitro* observation
36 (Malheiros *et al.* 2005). Therefore, the present results may not be directly generalizable to the *in*
37 *vivo* settings.
38
39
40
41
42
43
44
45
46
47
48

49 As already mentioned above, conflicting results on the biofilm disruption or antimicrobial effect of
50 EDTA have been reported. The only antibacterial property associated with EDTA was to weaken
51 the bacterial cell membrane without killing the cell and promoting biofilm detachment (de Almeida
52 *et al.* 2016). These data were herein confirmed as EDTA was not inhibitory when diluted 1:1 and
53 not bactericidal even when not diluted and exposed to *E. faecalis* cells in planktonic killing tests
54 (MIC, MBC). Also, in MBEC assay, EDTA was not able to dislodge the biofilms formed on the
55
56
57
58
59
60

1
2
3 4pegs. A significant biomass reduction was observed when mature biofilm was analyzed employing
4
5 CLSM, in agreement with previous reports (Cavaliere *et al.* 2014, de Almeida *et al.* 2016).
6
7

8
9 MA has recently been suggested as an alternative chelator to EDTA (Ballal *et al.* 2009b). The
10 highly acidic pH of MA, which can alter cell membrane permeability, could explain its **substantial**
11 antimicrobial **properties** (Ferrer-Luque *et al.* 2012). In the present study, it was also observed that it
12 could inhibit cell growth even when diluted 1:16 and kill 99.9% of cells when diluted 1:8 (**Table 3**).
13
14 Conversely, **the present** results **revealed** that MA **was associated with** a lower bactericidal activity
15 on biofilm cells (Fig 4), and it was able to dislodge the biofilms formed on the pegs only undiluted
16 to 1' and diluted 1: 2 to 5' by using MBEC assay in both treatments time.
17
18
19
20
21
22
23
24

25 Various ingredients **such** as detergents added to irrigants, reduce the surface tension (Giardino *et al.*
26 2018) and enhance the antibacterial effect of the solutions by a residual antibacterial activity,
27 increasing the resistance to microbial regrowth in the root canal system (Baca *et al.* 2012). Some
28 studies stated that CTR, a cationic surfactant, in addition to a proven bactericidal activity and the
29 ability to reduce the surface tension of irrigants (Wang *et al.* 2012), can decrease the mechanical
30 stability of the biofilm by destabilization of the cohesive forces of the biofilm. This probably
31 depends on the interaction between the chemical structure of the molecule and the anionic
32 properties of the extracellular polymeric substance (EPS) surrounding the biofilm (Simões *et al.*
33 2005). All these features can contribute to greater efficiency of irrigating solutions where detergents
34 are added, as highlighted in the current investigation, and explain the best results obtained
35 compared to both surfactant-free solution combinations.
36
37
38
39
40
41
42
43
44
45
46
47
48
49

50 The results of the current study showed that CTR alone had the most prominent effect, being
51 inhibitory also when diluted 1:1024 and bactericidal at 1:512. Moreover, it was able to dislodge *E.*
52 *faecalis* biofilm completely from the MBEC pegs, respectively, when applied for 1 and 5'. This
53 removal activity improved when mixed with EDTA.
54
55
56
57
58
59
60

1
2
3 Some researchers (De-Deus *et al.* 2011) formerly highlighted that scanning electron microscopic
4 (SEM) evaluation for AHTD in a laboratory setting has a limited utility to consider a side effect of
5
6 the chemomechanical preparation procedures in the intricate root canal anatomy. The status of the
7
8 dentinal surface before and after the application of the chelators is unknown, so the evaluation is not
9
10 performed in the very same dentine area of the same sample (De-Deus *et al.* 2011).
11
12

13
14 The assessment of hard-tissue debris accumulation has been made possible through the combination
15
16 of nondestructive micro-computed tomography (micro-CT) imaging and the development of robust
17
18 image analysis and processing software (Paqué *et al.* 2009).
19
20

21 Therefore, to verify the debris removal ability of the chelators used in the present study, the 3D
22
23 non-destructive micro-CT imaging was carried out because it currently represents a gold standard
24
25 technique to evaluate the AHTD inside anatomic complexities of the root canal system of shaped
26
27 and irrigated human teeth while preserving sample integrity (Keleş *et al.* 2016).
28
29

30
31 The present investigation showed that the percentage volume of AHTD removal after final
32
33 irrigation was lower in the canals irrigated with saline solution (30.65%) in comparison with the
34
35 EDTA and MA irrigation protocols, which markedly showed less remaining debris (AHTD removal
36
37 of 59.66% and 75.57% respectively), as reported in Table 5. In previous studies (Ballal *et al.* 2009b,
38
39 Ulusoy & Görgül 2013), MA had a better ability to remove the smear layer in comparison to
40
41 EDTA. These findings were not in agreement with the present study. Currently, when MA and
42
43 EDTA with or without CTR added were compared with each other, there was no significant
44
45 difference between them in removal AHTD, respectively. The discrepancy with the present results
46
47 might be explained by the differences in the experimental models and methods of investigation
48
49 used. Firstly, in the present study, the apical end of each sample was covered with a layer of
50
51 cyanoacrylate to create a closed environment (Giardino *et al.* 2017) and to simulate an *ex vivo*
52
53 closed-end model, contrary to the previous reports where the apical end of each tooth was not
54
55 closed during irrigation procedures, then not reproducing the dynamics and impact on the
56
57
58
59
60

1
2
3 replenishments of irrigants which does not mimic the clinical setting. As stated by Tay *et al.* (2010),
4
5 the root is enclosed by the bone socket during *in vivo* irrigation; then, the root canal behaves as a
6
7 closed-end channel, which results in gas entrapment at its closed-end, producing a vapor lock effect
8
9 during irrigant delivery. For the closed system, the effect of a vapor lock was most conspicuous
10
11 along the apical portion of the canal, with retention of debris and smear layer remnants, contrary to
12
13 the open system, where complete smear layer removal and debris clearance were seen. Secondly, in
14
15 the present study, a micro-CT assay was used to investigate the hard debris removal ability of the
16
17 irrigants in place of SEM evaluation, a scientifically questionable tool to study the real effect of the
18
19 chelating solutions because the lack of solid and reliable experimental features, where the results
20
21 may not be precisely determined (De-Deus *et al.* 2011). In line with the present findings, it has
22
23 been reported that there is no significant difference found between MA and EDTA group in smear
24
25 layer removal (Jaiswal *et al.* 2018). However, MA has shown better smear layer removing ability
26
27 than EDTA, experimentally.
28
29
30
31
32

33 The addition of CTR to EDTA and MA produced similar outcomes in AHTD removal (80.83% and
34
35 82.07% respectively), resulting in a significant improvement over both solutions used without
36
37 detergent. This suggests that the addition of surfactant improves the properties of the chelators, in
38
39 line with the existing literature, which recommends the use of chelators enriched with surfactants
40
41 (Yilmaz *et al.* 2011, Ballal *et al.* 2018). These results reconfirm the correlation between wettability
42
43 of irrigants and effectiveness in removing debris since a greater diffusion is obtained both inside the
44
45 canal and in its ramifications, and microscopically at the level of the dentinal tubules.
46
47
48
49

50 **Conclusions**

51
52
53 Both final irrigation protocols tested (MA+CTR and EDTA+CTR) had similar effectiveness in the
54
55 reduction of AHTD from the canal walls and increased their antimicrobial activity when compared
56
57 to the same solutions without detergents. It was also shown that 7% MA was less cytotoxic in
58
59
60

1
2
3 comparison to 17% EDTA. However, further *in vivo* studies need to be performed to confirm the
4
5 results.
6
7
8
9
10
11
12
13

14 **Acknowledgments**

15
16
17 The authors thank Dr. Andrea Venturelli, CEO Simit Dental Mantova, Italy, and Dentsply Sirona
18
19 Ballaigues, Switzerland, to kindly provided the ProTaper Next rotary files used in the present study.
20
21

22 **Conflict of interest**

23
24
25 The authors have stated explicitly that there are no conflicts of interest in connection with this
26
27 article.
28
29
30
31
32
33
34
35
36
37
38
39
40
41
42
43
44
45
46
47
48
49
50
51
52
53
54
55
56
57
58
59
60

References

- Arias-Moliz MT, Ferrer-Luque CM, Espigares-Rodríguez E, Liébana-Ureña J, Espigares-García M (2008). Bactericidal activity of phosphoric acid, citric acid, and EDTA solutions against *Enterococcus faecalis*. *Oral Surgery, Oral, Medicine, Oral Pathology, Oral Radiology, and Endodontology* **106**, e84-9.
- Arias-Moliz MT, Ferrer-Luque CM, Gonzalez-Rodriguez MP, Valderrama MJ, Baca P (2010) Eradication of *Enterococcus faecalis* biofilms by cetrимide and chlorhexidine. *Journal of Endodontics* **36**, 87-90.
- Baca P, Junco P, Arias-Moliz MT, Castillo F, Rodríguez-Archilla A, Ferrer-Luque CM (2012) Antimicrobial substantivity over time of chlorhexidine and cetrимide. *Journal of Endodontics* **38**, 927-30.
- Ballal NV, Kundabala M, Bhat S, Rao N, Rao BS (2009a) A comparative in vitro evaluation of cytotoxic effects of EDTA and maleic acid: Root canal irrigants. *Oral Surgery, Oral, Medicine, Oral Pathology, Oral Radiology, and Endodontology* **108**, 633-8.
- Ballal NV, Kandian S, Mala K, Bhat KS, Acharya S (2009b) Comparison of the efficacy of maleic acid and ethylenediaminetetraacetic acid in smear layer removal from instrumented human root canal: a scanning electron microscopic study. *Journal of Endodontics* **35**, 1573-6.
- Ballal NV, Yegneswaran PP, Mala K, Bhat KS (2011) In vitro antimicrobial activity of maleic acid and ethylenediaminetetraacetic acid on endodontic pathogens. *Oral Surgery Oral Medicine Oral Pathology Oral Radiology Endodontology* **112**, 696-700.
- Ballal NV, Ferrer-Luque CM, Sona M, Prabhu KN, Arias-Moliz T, Baca P (2018) Evaluation of final irrigation regimens with maleic acid for smear layer removal and wettability of root canal sealer. *Acta Odontologica Scandinavica* **76**, 199-203.

- 1
2
3 Ballal NV, Jain H, Rao S, Johnson AD, Baeten J, Wolcott JF (2019a) Evaluation of SmearOFF,
4 Maleic acid and two EDTA preparations in smear layer removal from root canal dentin. *Acta*
5 *Odontologica Scandinavica* **77**, 28-32.
6
7
8
9
10 Ballal NV, Das S, Rao BSS, Zehnder M, Mohn D (2019b) Chemical, cytotoxic and genotoxic
11 analysis of etidronate in sodium hypochlorite solution. *International Endodontic Journal* **52**, 1228-
12 34.
13
14
15
16
17 Bajrami D, Hoxha V, Gorduysus O, Muftuoglu S, Zeybek ND, Küçükkaya S (2014) Cytotoxic
18 effect of endodontic irrigants in vitro. *Medical Science Monitor Basic Research* **20**, 22-6.
19
20
21
22
23 Botton G, Pires CW, Cadoná FC *et al.* (2016) Toxicity of irrigating solutions and pharmacological
24 associations used in pulpectomy of primary teeth *International Endodontic Journal* **49**, 746-5.
25
26
27
28 Cavaliere R, Ball JL, Turnbull L, Whitchurch CB (2014) The biofilm matrix destabilizers, EDTA
29 and DNaseI, enhance the susceptibility of nontypeable *Haemophilus influenzae* biofilms to treatment
30 with ampicillin and ciprofloxacin. *Microbiology open* **3**, 557-67.
31
32
33
34
35 Cergneux M, Ciucchi B, Dietschi JM, Holz J (1987) The influence of the smear layer on the sealing
36 ability of canal obturation. *International Endodontic Journal* **20**, 228-32.
37
38
39
40 Chávez de Paz LE, Bergenholtz G, Svensäter G (2010) The effects of antimicrobials on endodontic
41 biofilm bacteria. *Journal of Endodontics* **36**, 70-7.
42
43
44
45 da Silva Limoeiro AG, Dos Santos AH, De Martin AS *et al.* (2016) Micro-Computed Tomographic
46 Evaluation of 2 Nickel-Titanium Instrument Systems in Shaping Root Canals. *Journal of*
47 *Endodontics* **42**, 496-9.
48
49
50
51
52
53 de Almeida J, Hoogenkamp M, Felipe WT, Crielaard W, van der Waal SV (2016) Effectiveness
54 of EDTA and Modified Salt Solution to Detach and Kill Cells from *Enterococcus faecalis* Biofilm.
55
56
57
58
59
60 *Journal of Endodontics* **42**, 320-3.

1
2
3 De-Deus G, Reis C, Paciornik S (2011) Critical appraisal of published smear layer-removal studies:
4 methodological issues. *Oral Surgery, Oral, Medicine, Oral Pathology, Oral Radiology, and*
5
6
7
8 *Endodontology* **112**, 531-43.

9
10 De-Deus G, Belladonna FG, de Siqueira Zuolo A *et al.* (2019) Micro-CT comparison of XP-endo
11
12
13 Finisher and passive ultrasonic irrigation as final irrigation protocols on the removal of accumulated
14
15
16
17 hard-tissue debris from oval shaped-canals. *Clinical Oral Investigations* **23**, 3087-93.

18
19 Dunavant TR, Regan JD, Glickman GN, Solomon ES, Honeyman AL (2006) Comparative
20
21
22
23
24
25
26 evaluation of endodontic irrigants against *Enterococcus faecalis* biofilms. *Journal of Endodontics*
27
28
29
30
31
32
33 32, 527-31.

34
35
36
37
38
39
40
41
42
43
44
45
46
47
48
49
50
51
52
53
54
55
56
57
58
59
60
61
62
63
64
65
66
67
68
69
70
71
72
73
74
75
76
77
78
79
80
81
82
83
84
85
86
87
88
89
90
91
92
93
94
95
96
97
98
99
100
101
102
103
104
105
106
107
108
109
110
111
112
113
114
115
116
117
118
119
120
121
122
123
124
125
126
127
128
129
130
131
132
133
134
135
136
137
138
139
140
141
142
143
144
145
146
147
148
149
150
151
152
153
154
155
156
157
158
159
160
161
162
163
164
165
166
167
168
169
170
171
172
173
174
175
176
177
178
179
180
181
182
183
184
185
186
187
188
189
190
191
192
193
194
195
196
197
198
199
200
201
202
203
204
205
206
207
208
209
210
211
212
213
214
215
216
217
218
219
220
221
222
223
224
225
226
227
228
229
230
231
232
233
234
235
236
237
238
239
240
241
242
243
244
245
246
247
248
249
250
251
252
253
254
255
256
257
258
259
260
261
262
263
264
265
266
267
268
269
270
271
272
273
274
275
276
277
278
279
280
281
282
283
284
285
286
287
288
289
290
291
292
293
294
295
296
297
298
299
300
301
302
303
304
305
306
307
308
309
310
311
312
313
314
315
316
317
318
319
320
321
322
323
324
325
326
327
328
329
330
331
332
333
334
335
336
337
338
339
340
341
342
343
344
345
346
347
348
349
350
351
352
353
354
355
356
357
358
359
360
361
362
363
364
365
366
367
368
369
370
371
372
373
374
375
376
377
378
379
380
381
382
383
384
385
386
387
388
389
390
391
392
393
394
395
396
397
398
399
400
401
402
403
404
405
406
407
408
409
410
411
412
413
414
415
416
417
418
419
420
421
422
423
424
425
426
427
428
429
430
431
432
433
434
435
436
437
438
439
440
441
442
443
444
445
446
447
448
449
450
451
452
453
454
455
456
457
458
459
460
461
462
463
464
465
466
467
468
469
470
471
472
473
474
475
476
477
478
479
480
481
482
483
484
485
486
487
488
489
490
491
492
493
494
495
496
497
498
499
500
501
502
503
504
505
506
507
508
509
510
511
512
513
514
515
516
517
518
519
520
521
522
523
524
525
526
527
528
529
530
531
532
533
534
535
536
537
538
539
540
541
542
543
544
545
546
547
548
549
550
551
552
553
554
555
556
557
558
559
560
561
562
563
564
565
566
567
568
569
570
571
572
573
574
575
576
577
578
579
580
581
582
583
584
585
586
587
588
589
590
591
592
593
594
595
596
597
598
599
600
601
602
603
604
605
606
607
608
609
610
611
612
613
614
615
616
617
618
619
620
621
622
623
624
625
626
627
628
629
630
631
632
633
634
635
636
637
638
639
640
641
642
643
644
645
646
647
648
649
650
651
652
653
654
655
656
657
658
659
660
661
662
663
664
665
666
667
668
669
670
671
672
673
674
675
676
677
678
679
680
681
682
683
684
685
686
687
688
689
690
691
692
693
694
695
696
697
698
699
700
701
702
703
704
705
706
707
708
709
710
711
712
713
714
715
716
717
718
719
720
721
722
723
724
725
726
727
728
729
730
731
732
733
734
735
736
737
738
739
740
741
742
743
744
745
746
747
748
749
750
751
752
753
754
755
756
757
758
759
760
761
762
763
764
765
766
767
768
769
770
771
772
773
774
775
776
777
778
779
780
781
782
783
784
785
786
787
788
789
790
791
792
793
794
795
796
797
798
799
800
801
802
803
804
805
806
807
808
809
810
811
812
813
814
815
816
817
818
819
820
821
822
823
824
825
826
827
828
829
830
831
832
833
834
835
836
837
838
839
840
841
842
843
844
845
846
847
848
849
850
851
852
853
854
855
856
857
858
859
860
861
862
863
864
865
866
867
868
869
870
871
872
873
874
875
876
877
878
879
880
881
882
883
884
885
886
887
888
889
890
891
892
893
894
895
896
897
898
899
900
901
902
903
904
905
906
907
908
909
910
911
912
913
914
915
916
917
918
919
920
921
922
923
924
925
926
927
928
929
930
931
932
933
934
935
936
937
938
939
940
941
942
943
944
945
946
947
948
949
950
951
952
953
954
955
956
957
958
959
960
961
962
963
964
965
966
967
968
969
970
971
972
973
974
975
976
977
978
979
980
981
982
983
984
985
986
987
988
989
990
991
992
993
994
995
996
997
998
999
1000

Ferrer-Luque CM, Arias-Moliz MT, Gonzalez-Rodriguez MP, Baca P (2010) Antimicrobial activity
of maleic acid and combinations of cetrimide with chelating agents against *Enterococcus faecalis*
biofilm. *Journal of Endodontics* **36**, 1673-5.

Franken NA, Rodermond HM, Stap J, Haveman J, van Bree C (2006) Clonogenic assay of cells in
vitro. *Nature Protocols* 2006 **1**, 2315-9.

Gettleman BH, Messer HH, El Deeb ME (1991) Adhesion of sealer cements to dentine with and
without the smear layer. *Journal of Endodontics* **17**, 15-20.

Giardino L, Ambu E, Becce C, Rimondini L, Morra M (2006) Surface tension comparison of four
common root canal irrigants and two new irrigants containing antibiotic. *Journal of Endodontics*,
32, 1091-3.

Giardino L, Cavani F, Generali L (2017) Sodium hypochlorite solution penetration into human
dentine: a histochemical evaluation. *International Endodontic Journal* **50**, 492-8.

Giardino L, Del Fabbro M, Cesario F, Fernandes FS, Andrade FB (2018) Antimicrobial
effectiveness of combinations of oxidant and chelating agents in infected dentine: an ex vivo
confocal laser scanning microscopy study. *International Endodontic Journal* **51**, 448-56.

1
2
3 Heling I, Irani E, Karni S, Steinberg D (1999) In vitro antimicrobial effect of RC-Prep within
4 dentinal tubules. *Journal of Endodontics* **25**, 782-5.
5
6

7
8 Jaiswal S, Patil V, Satish Kumar K S, Ratnakar P, Rairam S, Tripathi S (2018) Comparative
9 analysis of smear layer removal by conventional endodontic irrigants with a newly experimented
10 irrigant-fumaric acid: A scanning electron microscopic study. *Journal of Conservative Dentistry* **21**,
11 419-23.
12
13
14
15
16

17
18 Keleş A, Alçin H, Sousa-Neto MD, Versiani MA (2016) Supplementary steps for removing hard
19 tissue debris from isthmus-containing canal systems. *Journal of Endodontics* **42**, 1677-82.
20
21
22

23
24 Labban N, Yassen GH, Windsor LJ, Platt JA (2014) The direct cytotoxic effects of medicaments
25 used in endodontic regeneration on human dental pulp cells. *Dental Traumatology* **30**, 429-34.
26
27

28
29 Leoni GB, Versiani MA, Silva-Sousa YT, Bruniera JF, Pecora JD, Sousa-Neto MD (2017) Ex vivo
30 evaluation of four final irrigation protocols on the removal of hard-tissue debris from the mesial
31 root canal system of mandibular first molars. *International Endodontic Journal* **50**, 398-406.
32
33
34

35
36 Liu Y, Guo L, Li Y, Guo X, Wang B, Wu L (2015) In vitro comparison of antimicrobial
37 effectiveness of QMix and other final irrigants in human root canals. *Scientific Reports* **3**, 5:17823.
38
39
40
41
42
43
44
45
46
47
48
49
50
51
52
53
54
55
56
57
58
59
60

51
52
53
54
55
56
57
58
59
60

51
52
53
54
55
56
57
58
59
60

51
52
53
54
55
56
57
58
59
60

- 1
2
3 Nersesyan A, Fenech M, Bolognesi C *et al.* (2016) Use of the lymphocyte cytokinesis-block
4 micronucleus assay in occupational biomonitoring of genome damage caused by in vivo exposure
5 to chemical genotoxins: Past, present and future. *Mutation Research* **770**, 1-11.
6
7
8
9
10 O'Connell MS, Morgan LA, Beeler WJ, Baumgartner JC (2000) A comparative study of smear
11 layer removal using different salts of EDTA. *Journal of Endodontics* **26**, 739-43.
12
13
14
15 Ordinola-Zapata R, Bramante CM, Cavenago B *et al.* (2012) Antimicrobial effect of endodontic
16 solutions used as final irrigants on a dentine biofilm model. *International Endodontic Journal* **45**,
17 162-8.
18
19
20
21
22
23 Ørstavik D, Haaapasalo M (1990) Disinfection by endodontic irrigants and dressings of
24 experimentally infected dentinal tubules. *Endodontic Dental Traumatology* **6**, 142-9.
25
26
27
28 Paqué F, Laib A, Gautschi H, Zehnder M (2009) Hard-tissue debris accumulation analysis by high-
29 resolution computed tomography scans. *Journal of Endodontics* **35**, 1044-7.
30
31
32
33 Paqué F, Rechenberg DK, Zehnder M (2012) Reduction of hard-tissue debris accumulation during
34 rotary root canal instrumentation by etidronic acid in a sodium hypochlorite irrigant. *Journal of*
35 *Endodontics* **38**, 692-5.
36
37
38
39
40 Peters OA, Boessler C, Paqué F (2010) Root canal preparation with a novel nickel-titanium
41 instrument evaluated with micro-computed tomography: canal surface preparation over time.
42 *Journal of Endodontics* **36**, 1068-72.
43
44
45
46
47 Peters OA (2013) Research that matters - biocompatibility and cytotoxicity screening. *International*
48 *Endodontic Journal* **46**, 195-7.
49
50
51
52 Puck TT, Marcus PI (1955) A rapid method for viable cell titration and clone production with HeLa
53 cells in tissue culture: the use of X-irradiated cells to supply conditioning factors. *Proceedings of*
54 *the National Academy of Sciences* **41**, 432-437.
55
56
57
58
59
60

- 1
2
3 Reidmiller JS, Smith WL, Sawyer MM, Osburn BI, Stott JL, Cullor JS (2006) Antimicrobial
4 properties of the chelating agent EDTA on Streptococcal bovine mastitis isolates. *Journal of Food*
5 *Protection* **69**, 1460-2.
6
7
8
9
10 Roy R, Tiwari M, Donelli G, Tiwari V (2018) Strategies for combating bacterial biofilms: A focus
11 on anti-biofilm agents and their mechanisms of action. *Virulence* **9**, 522-554.
12
13 Segura JJ, Calvo JR, Guerrero JM, Sampedro C, Jimenez A, Llamas R (1996) The disodium salt of
14 EDTA inhibits the binding of vasoactive intestinal peptide to macrophage membranes: Endodontic
15 implications. *Journal of Endodontics* **22**, 337-40.
16
17
18
19
20
21
22
23 Shahravan A, Haghdoost A, Adl A, Rahimi H, Shadifar F (2007) Effect of smear layer on sealing
24 ability of canal obturation: a systematic review and meta-analysis. *Journal of Endodontics* **33**, 96-
25 105.
26
27
28
29
30
31
32
33
34
35
36
37
38
39
40
41
42
43
44
45
46
47
48
49
50
51
52
53
54
55
56
57
58
59
60
- Silva EJNL, Carvalho CR, Belladonna FG *et al.* (2019) Micro-CT evaluation of different final irrigation protocols on the removal of hard-tissue debris from isthmus-containing mesial root of mandibular molars. *Clinical Oral Investigations* **23**, 681-687.
- Simões M, Pereira MO, Vieira MJ (2005) Effect of mechanical stress on biofilms challenged by different chemicals. *Water Research* **39**, 5142-52.
- Stuart CH, Schwartz SA, Beeson TJ, Owatz CB (2006) Enterococcus faecalis: its role in root canal treatment failure and current concepts in retreatment. *Journal of Endodontics* **32**, 93-8.
- Tay FR, Gu LS, Schoeffel GJ *et al.* (2010) Effect of vapor lock on root canal debridement by using a side-vented needle for positive-pressure irrigant delivery. *Journal of Endodontics* **36**, 745-50.
- Teixeira CS, Felipe MC, Felipe WT (2005) The effect of application time of EDTA and NaOCl on intracanal smear layer removal: an SEM analysis. *International Endodontic Journal* **38**, 285-90.

1
2
3 Torabinejad M, Handysides R, Khademi AA, Bakland LK (2002) Clinical implications of the smear
4 layer in endodontics: a review. *Oral Surgery Oral Medicine Oral Pathology Oral Radiology*
5
6
7
8 *Endodontology* **94**, 658-6.

9
10 Ulusoy Öİ, Görgül G (2013) Effects of different irrigation solutions on root dentine microhardness,
11 smear layer removal and erosion. *Australian Endodontic Journal* **39**, 66-72.

12
13
14
15 Versiani MA, Pereira MR, Pécora JD, Sousa-Neto MD (2019) Root Canal Anatomy of Maxillary
16
17
18 and Mandibular Teeth. In: Versiani M, Basrani B, Sousa-Neto M eds. *The Root Canal Anatomy in*
19
20
21 *Permanent Dentition*; pp. 181-197. Springer, Cham, Switzerland.

22
23 Wang Z, Shen Y, Ma J, Haapasalo M (2012) The effect of detergents on the antibacterial activity of
24
25
26
27 disinfecting solutions in dentin. *Journal of Endodontics* **38**, 948-53.

28 White RR, Goldman M, Lin PS (1984) The influence of the smeared layer upon dentinal tubule
29
30
31
32 penetration by plastic filling materials. *Journal of Endodontics* **10**, 558-62.

33 Yilmaz Z, Basbag B, Buzoglu HD, Gümüsderelioglu M (2011) Effect of low-surface-tension EDTA
34
35
36
37
38 solutions on the wettability of root canal dentin. *Oral Surgery Oral Medicine Oral Pathology Oral*
39
40
41
42 *Radiology and Endodontology* **111**, 109-14.

43 Zehnder M, Schmidlin P, Sener B, Waltimo T (2005) Chelation in root canal therapy reconsidered.
44
45
46
47
48
49
50
51
52
53
54
55
56
57
58
59
60
Journal of Endodontics **31**, 817-20.

Zehnder M (2006) Root Canal Irrigants. *Journal of Endodontics* **32**, 389-98.

Figure Legends

Figure 1. Graph showing changes in the viability of V79 cells in the presence of different dilutions of test agents. ns= Not significant; * $p < 0.05$, ** $p < 0.01$, *** $p < 0.001$ when compared to its respective 1: 10 dilution for each of the test compound. Control= cells with DMEM alone.

Data are shown as Mean \pm SD, obtained from three independent experiments. Statistical analysis was done by 1-way ANOVA followed by Bonferroni's Multiple Comparison Test.

Figure 2. Representative photomicrograph showing the clonogenicity of V79 cells in the presence of different dilutions of the indicated test agents.

Figure 3. Representative photomicrograph of V79 cells stained with acridine orange exhibiting mono-nucleated and binucleated states with micronucleus. Images were taken using 200 \times magnification using fluorescence filters with FITC-TRITC dual-band fluorescence filter. Scale = 80 μ m. **(B)** Graph showing the effect of different drugs tested at a dilution of 1/1000 for the induction of micronuclei (MN) in V79 cells. No symbol indicated that the changes in the MN frequency was not significant when compared to control as well as between the groups.

Figure 4. Biofilm removal efficacy of the tested solutions on pre-formed *E. faecalis* biofilm analyzed by CLSM. Residual biomass is represented in percentage upon treatment with respect to the control. Whole bars represent the total biomass; the green fraction is viable cells, in red the dead cells still encased in the biofilm. Ctrl = control; MA = maleic acid; CTR = cetrимide. * $P < 0.05$, ** $P < 0.01$, *** $P < 0.001$.

Figure 5. Exposure time effect of the tested solution on preformed biofilm. Black bars, 1' treatment; white bars, 5' minutes treatment. Ctrl = control; MA = maleic acid; CTR = cetrимide. * $P < 0.05$.

Figure 6. CLSM 3D images of *E. faecalis* biofilms treated with the tested solutions. Ctrl = control; MA = maleic acid; CTR = cetrимide.

1
2
3
4
5
6
7
8
9
10
11
12
13
14
15
16
17
18
19
20
21
22
23
24
25
26
27
28
29
30
31
32
33
34
35
36
37
38
39
40
41
42
43
44
45
46
47
48
49
50
51
52
53
54
55
56
57
58
59
60

Figure 7. Representative micro-CT reconstructions of the root canal system of the treated teeth before and after the final irrigation with the solutions assigned. Accumulated hard tissue debris (AHTD) is depicted in black.

For Peer Review

Table 1. Summary of the statistical comparison between different test agents for each of the dilutions used for assessment of cell viability by MTT assay. Statistical analysis was done by 1-way ANOVA followed by Bonferroni's Multiple Comparison Test.

Dilutions	Cetrimide vs EDTA	Cetrimide vs MA	Cetrimide vs Cetrimide +EDTA	Cetrimide vs Cetrimide +MA	EDTA vs MA	EDTA vs Cetrimide +EDTA	EDTA vs Cetrimide +MA	MA vs Cetrimide +EDTA	MA vs Cetrimide +MA	Cetrimide +EDTA vs Cetrimide +MA
1:10	ns	ns	ns	ns	ns	ns	ns	ns	ns	ns
1:50	p < 0.001	ns	ns	ns	p < 0.001	p < 0.001	p < 0.001	ns	ns	ns
1:100	ns	ns	ns	ns	ns	ns	ns	ns	ns	ns
1:500	ns	ns	ns	ns	ns	ns	ns	ns	ns	ns
1:1000	ns	ns	ns	ns	ns	ns	ns	ns	ns	ns

Ns: Not significant.

Table 2. Surviving Fraction (SF) of V79 cells treated with the different test agents.

Solutions	1:10	1:100	1:1000
Control	1.0±0.00	1.0±0.00	1.0±0.00
Cetrimide	0.00±0.00 [#]	0.00±0.00 [#]	0.86±0.15 ^A
EDTA	0.18±0.22 [#]	0.50±0.20 ^{#,A}	0.90±0.07 ^A
MA	0.03±0.03 [#]	0.50±0.20 ^{#,A}	1.04±0.06 ^A
Cetrimide+EDTA	0.00±0.00 [#]	0.00±0.00 [#]	0.97±0.06 ^A
Cetrimide+MA	0.00±0.00 [#]	0.00±0.00 [#]	0.96±0.03 ^A

[#] $p < 0.001$ indicated the statistical comparison between untreated /control cells with various test agents. ^A $p < 0.001$ indicates the statistical comparison between the various dilutions of each test agent (n=6). Statistical analysis was done by 1-way ANOVA followed by Bonferroni's Multiple Comparison Test.

Table 3. Minimum Inhibitory Concentration (MIC) and Minimum Bactericidal Concentration (MBC) of the tested solutions.

	dilutions				concentrations			
	MIC	MBC	MBEC 1'	MBEC 5'	MIC	MBC	MBEC 1'	MBEC 5'
MA	1:16	1:8	nd	1:2	2.1875 g/L	4.375 g/L	70g/L	17.5g/L
EDTA	1:1	nd	nd	1:1	85 g/L	170 g/L	170 g/L	85 g/L
CTR	1:1024	1:512	1:8	1:32	0.0024 g/L	0.0048 g/L	0.3125 g/L	0.078125 g/L
MA + CTR			1:8	1:32	0.0342 g/l + 0.0024 g/L	0.1367 g/l + 0.0098 g/L	4.375 g/L +	1.09375 g/L + 0.078125
	1:1024	1:256					0.3125 g/L	g/L
EDTA + CTR			1:16	1:32	0.083 g/L + 0.0024 g/L	0.166 g/L + 0.0048 g/L	5.3125 g/L +	2.65625 g/L + 0.078125
	1:1024	1:512					0.15625	g/L

MA = maleic acid; CTR = cetrimide; nd = not diluted.

Table 4. Mean values and standard deviations for the main parameters assessed with micro-CT.

Parameters			EDTA	EDTA+ Cetrimide	Maleic acid	Maleic acid +Cetrimide	saline solution	P-value*
Root canal space	Volume, mm ³	Before preparation	3.11±2.24	4.25±1.33	3.89±1.55	3.88±0.89	3.09±1.47	0.46
		After preparation	5.81±1.80	5.88±0.82	6.11±1.47	6.31±0.79	5.18±0.99	0.41
		P-value**	<0.01	<0.01	<0.01	<0.01	<0.01	
AHTD	Volume, mm ³	After preparation	0.24±0.16	0.11±0.13	0.12±0.11	0.29±0.22	0.16±0.16	0.13
		After irrigation	0.09±0.06	0.02±0.03	0.04±0.09	0.05±0.05	0.10±0.10	0.52
		P-value**	<0.01	<0.01	<0.01	<0.01	<0.01	
AHTD	Volume, % of total root canal volume	After preparation	3.55±3.04	2.23±3.05	1.92±2.05	3.62±3.22	2.62±2.21	0.53
		After irrigation	1.30±1.29	0.60±1.08	0.76±1.66	1.14±1.41	1.54±1.59	0.50
		P-value**	<0.01	<0.01	<0.01	<0.01	<0.01	

AHTD= accumulated hard tissue debris; *=among-group comparisons (Kruskal-Wallis test); **=within-group comparisons (Wilcoxon matched-pairs signed-rank test)

Table 5. Mean values and standard deviations for the percentage of removed accumulated hard tissue debris (AHTD), and P-values of the among-group (ANOVA) and between-group comparisons (unpaired Student's t-test).

EDTA	EDTA+ Cetrimide	Maleic acid	Maleic acid +Cetrimide	saline solution	
59.7±20.0	80.85±7.4	75.6±21.1	82.1±14.2	30.6±20.6	P=0.049*
	0.01**	0.14	0.02**	0.01**	EDTA
		0.52	0.83	<0.001**	EDTA+ Cetrimide
			0.48	0.001**	Maleic acid
				<0.001**	Maleic acid +Cetrimide

*=among-group comparison (ANOVA); **=statistically significant difference

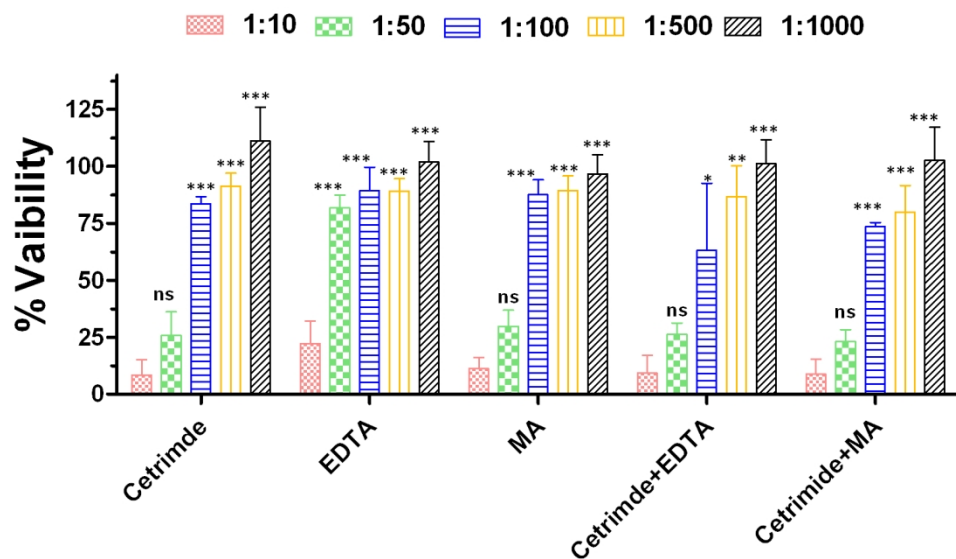
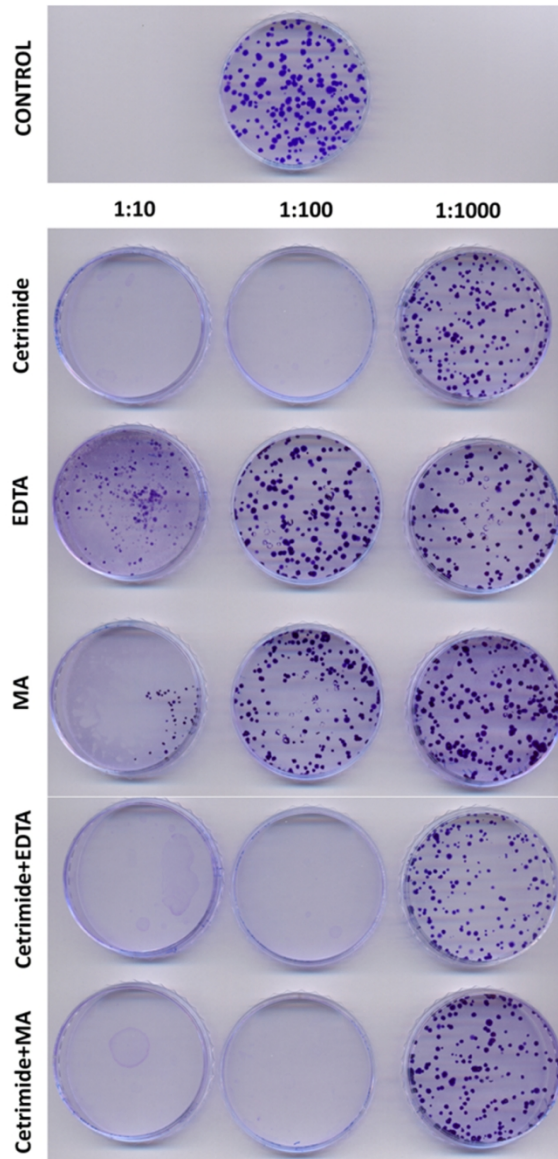


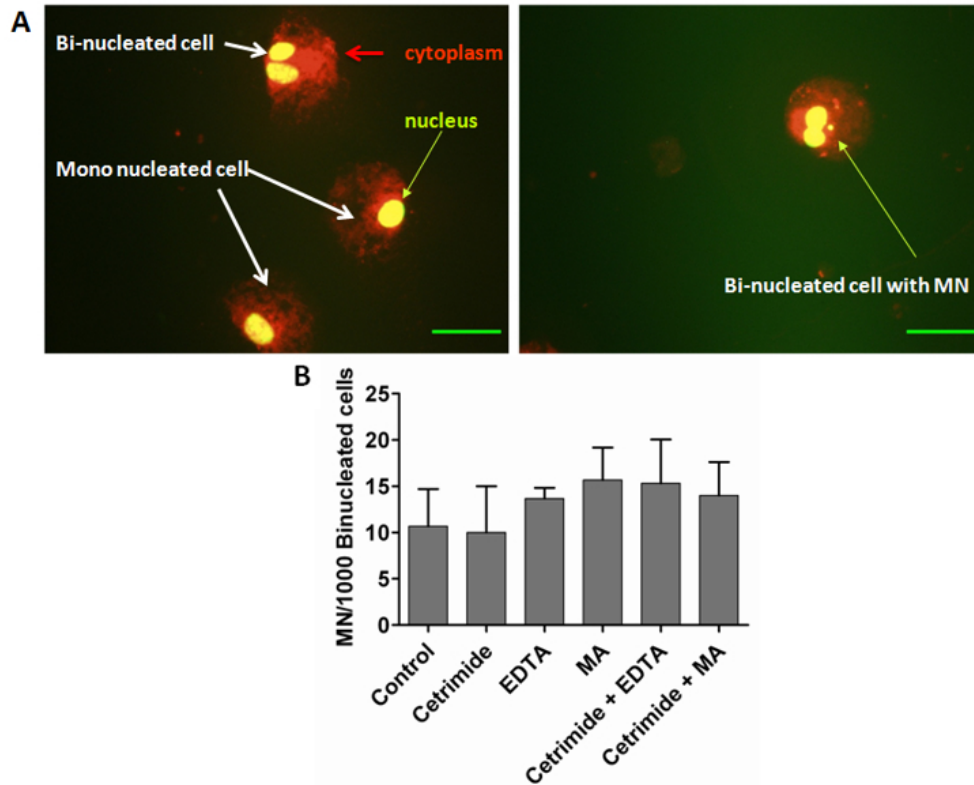
Figure 1. Graph showing changes in the viability of V79 cells in the presence of different dilutions of test agents. ns= Not significant; * $p < 0.05$, ** $p < 0.01$, *** $p < 0.001$ when compared to its respective 1: 10 dilution for each of the test compound. Control= cells with DMEM alone. Data are shown as Mean \pm SD, obtained from three independent experiments. Statistical analysis was done by 1-way ANOVA followed by Bonferroni's Multiple Comparison Test.

153x91mm (300 x 300 DPI)



45 Figure 2. Representative photomicrograph showing the clonogenicity of V79 cells in the presence of different
46 dilutions of the indicated test agents.

47 93x190mm (300 x 300 DPI)



33 Figure 3. Representative photomicrograph of V79 cells stained with acridine orange exhibiting mono-
34 nucleated and binucleated states with micronucleus. Images were taken using 200× magnification using
35 fluorescence filters with FITC-TRITC dual-band fluorescence filter. Scale = 80 μm. (B) Graph showing the
36 effect of different drugs tested at a dilution of 1/1000 for the induction of micronuclei (MN) in V79 cells.

37 124x101mm (150 x 150 DPI)

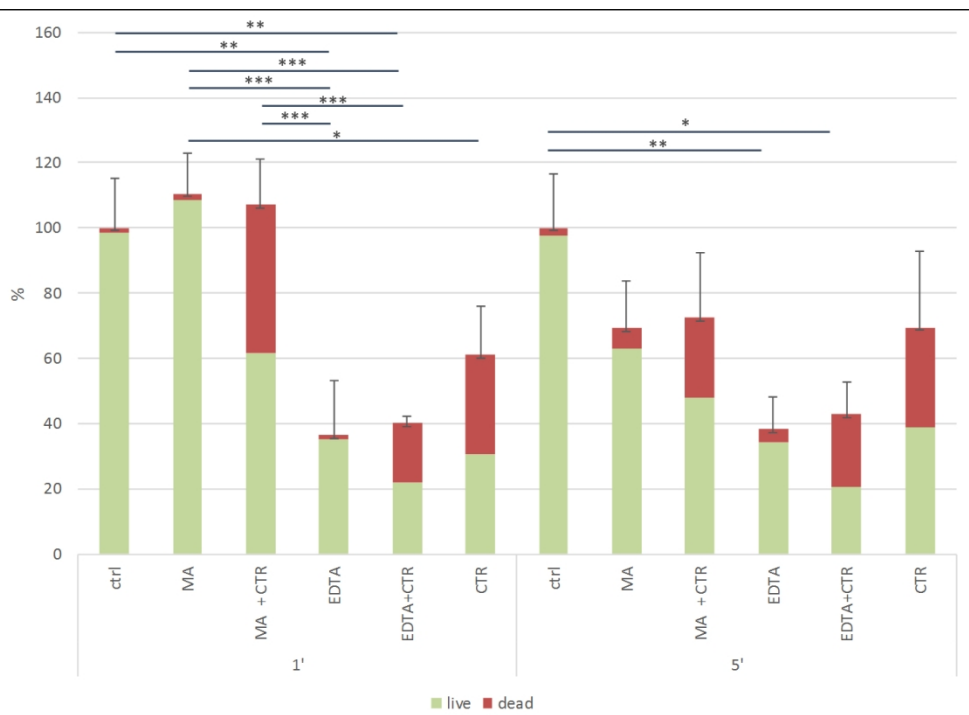


Figure 4. Biofilm removal efficacy of the tested solutions on pre-formed *E. faecalis* biofilm analyzed by CLSM. Residual biomass is represented in percentage upon treatment with respect to the control. Whole bars represent the total biomass; the green fraction is viable cells, in red the dead cells still encased in the biofilm. Ctrl = control; MA = maleic acid; CTR = cetrimide. * P<0.05, **P<0.01, ***P<0.001.

247x178mm (150 x 150 DPI)

1
2
3
4
5
6
7
8
9
10
11
12
13
14
15
16
17
18
19
20
21
22
23
24
25
26
27
28
29
30
31
32
33
34
35
36
37
38
39
40
41
42
43
44
45
46
47
48
49
50
51
52
53
54
55
56
57
58
59
60

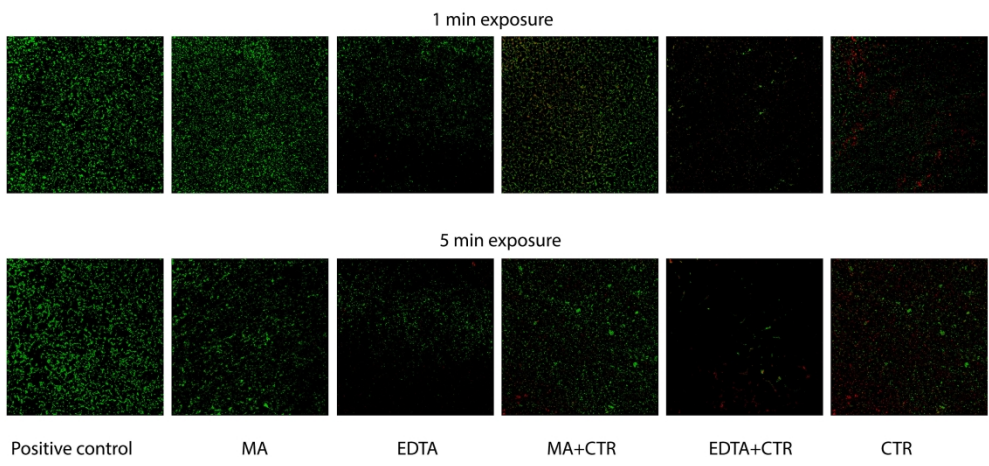


Figure 5. Exposure time effect of the tested solution on preformed biofilm. Black bars, 1' treatment; white bars, 5' minutes treatment. Ctrl = control; MA = maleic acid; CTR = cetrимide. * P<0.05.

320x152mm (300 x 300 DPI)

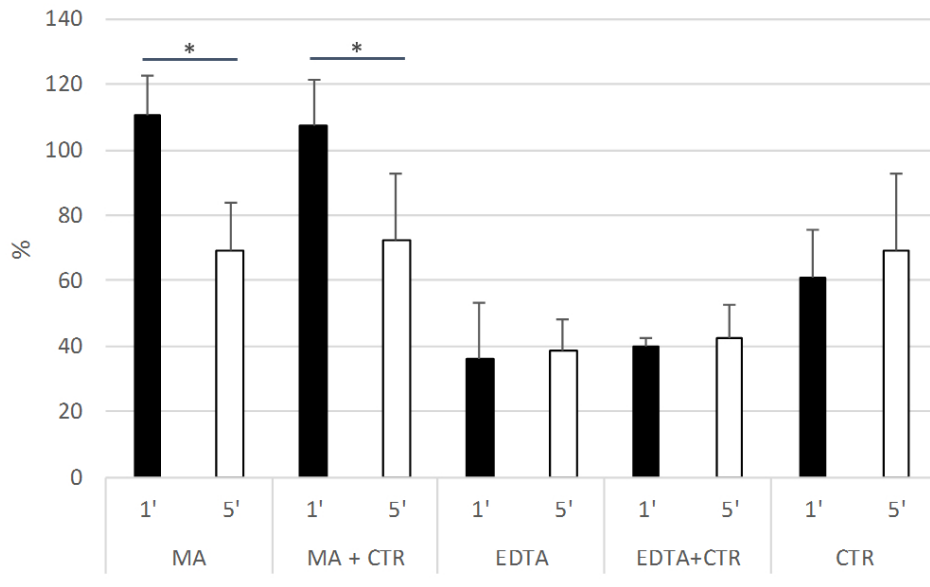


Figure 6. CLSM 3D images of *E. faecalis* biofilms treated with the tested solutions. Ctrl = control; MA = maleic acid; CTR = cetrimide.

178x107mm (150 x 150 DPI)

1
2
3
4
5
6
7
8
9
10
11
12
13
14
15
16
17
18
19
20
21
22
23
24
25
26
27
28
29
30
31
32
33
34
35
36
37
38
39
40
41
42
43
44
45
46
47
48
49
50
51
52
53
54
55
56
57
58
59
60

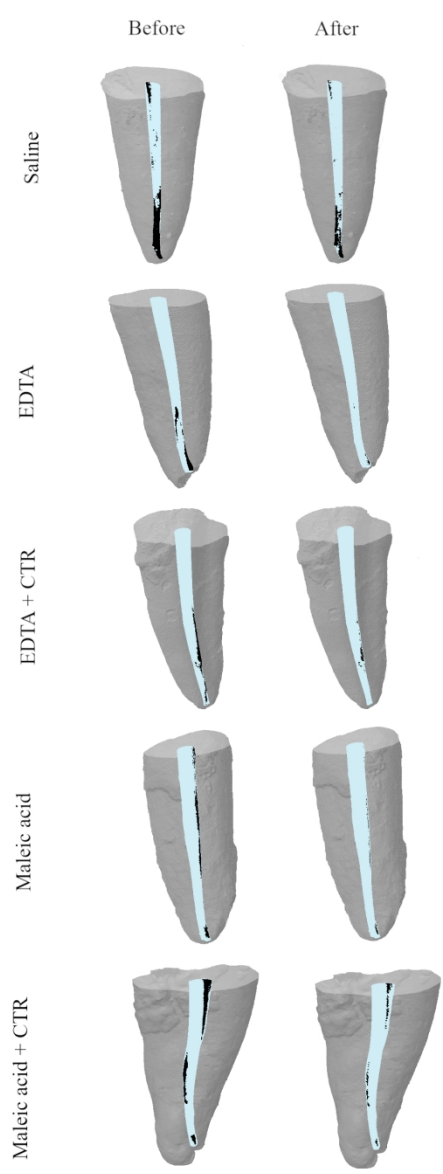


Figure 7. Representative micro-CT reconstructions of the root canal system of the treated teeth before and after the final irrigation with the solutions assigned. Accumulated hard tissue debris (AHTD) is depicted in black.

93x207mm (300 x 300 DPI)