

# chirps: API Client for the CHIRPS Precipitation Data in R

Kauê de Sousa<sup>1, 2</sup>, Adam H. Sparks<sup>3</sup>, William Ashmall<sup>4</sup>, Jacob van Etten<sup>2</sup>, and Svein Ø. Solberg<sup>1</sup>

**1** Department of Agricultural Sciences, Inland Norway University of Applied Sciences, Hamar, Norway **2** Bioversity International, Rome, Italy **3** Centre for Crop Health, University of Southern Queensland, Toowoomba, Australia **4** Universities Space Research Association, National Aeronautics and Space Administration (NASA), Huntsville, USA

DOI: [10.21105/joss.02419](https://doi.org/10.21105/joss.02419)

## Software

- [Review](#) ↗
- [Repository](#) ↗
- [Archive](#) ↗

---

**Editor:** [Daniel S. Katz](#) ↗

## Reviewers:

- [@danielskatz](#)

**Submitted:** 01 July 2020

**Published:** 01 July 2020

## License

Authors of papers retain copyright and release the work under a Creative Commons Attribution 4.0 International License ([CC BY 4.0](#)).

## Summary

The *chirps* package provides functionalities for reproducible analysis in R (R Core Team, 2020) using the CHIRPS (Funk et al., 2015) data. CHIRPS is daily precipitation data set developed by the Climate Hazards Group (Funk et al., 2015) for high resolution precipitation gridded data. Spanning 50° S to 50° N (and all longitudes) and ranging from 1981 to near-present (normally with a 45 day lag), CHIRPS incorporates 0.05 arc-degree resolution satellite imagery, and in-situ station data to create gridded precipitation time series for trend analysis and seasonal drought monitoring (Funk et al., 2015). Additionally, the package provides the API client for the IMERG (Huffman et al., 2014) and ESI (SERVIR Global, 2019a) data. The Integrated Multi-satellitE Retrievals for GPM (IMERG) data provides near-real time global observations of rainfall at 0.5 arc-degree resolution, which can be used to estimate total rainfall accumulation from storm systems and quantify the intensity of rainfall and flood impacts from tropical cyclones and other storm systems. IMERG is a daily precipitation dataset available from 2015 to near-present. The evaporative stress index (ESI) data describes temporal anomalies in evapotranspiration produced weekly at 0.25 arc-degree resolution for the entire globe (Anderson et al., 2011). The ESI data is based on satellite observations of land surface temperature, which are used to estimate water loss due to evapotranspiration (the sum of evaporation and plant transpiration from the Earth's land and ocean surface to the atmosphere). The ESI data is available from 2001 to near-present. When using these data sets in publications please cite Funk et al. (2015) for CHIRPS, Huffman et al. (2014) for IMERG and SERVIR Global (2019a) for ESI.

## Implementation

Four main functions are provided, `get_chirps()`, `get_imerg()`, `get_esi()` and `precip_indices()`. The `get_chirps()` function provides access to CHIRPS data via the ClimateSERV API Client (SERVIR Global, 2019b) with methods to handle objects of class 'data.frame', 'geojson' and 'sf' via the package *methods* (R Core Team, 2020). To accept the query, ClimateSERV requires a geojson object of type 'Polygon' (one single polygon per request). Using the package *sf* (Pebesma, 2018) internally, the input provided in `get_chirps()` is transformed into a list of polygons with a small buffer area (0.0001 arc-sec by default) around the point and transformed into a list of geojson strings. *chirps* uses *crul* (Chamberlain, 2019) to interface with ClimateSERV API. The query returns a JSON object parsed to *jsonlite* (Ooms, 2014) to obtain the data frame for the time series required. `get_chirps()` returns a `data.frame`, which also inherits the classes 'chirps' and 'chirps\_df', where each id represents

the index for the rows in the in-putted 'object'. The function `get_imerg()` returns the precipitation data from the IMERG data set. The function works with the same parameters described for `get_chirps()` and also inherits the classes 'chirps' and 'chirps\_df'. The function `get_esi()` returns the evaporative stress index (ESI) data (Anderson et al., 2011), and works similarly to `get_chirps()` returning a data.frame which inherit the class 'chirps\_df'. Users providing objects of class 'sf' and 'geojson' in `get_chirps()`, `get_imerg()` and `get_esi()` can also choose to return an object with the same class as the object provided using the arguments 'as.sf = TRUE' or 'as.geojson = TRUE'. With the function `precip_indices()` users can assess how the precipitation changes across the requested time series using precipitation variability indices (Aguilar et al., 2005), computed using *stats* (R Core Team, 2020), the main input is an object of class 'chirps'. Extended documentation is provided with examples on how to increase the buffer area and draw quadrants for the geojson polygon using *sf* (Pebesma, 2018).

## Application: a case study in the Tapajós National Forest

The *Tapajós* National Forest is a protected area in the Brazilian Amazon. Located within the coordinates  $-55.4^{\circ}$  and  $-54.8^{\circ}$  E and  $-4.1^{\circ}$  and  $-2.7^{\circ}$  S with  $\sim 527,400$  ha of multiple Amazonian ecosystems. We take twenty random points across its area to get the precipitation from Jan-2008 to Dec-2018 using `get_chirps()`. We use an object of class 'sf' which is passed to the method `get_chirps.sf()`. Then, we compute the precipitation indices for the time series with intervals of 30 days using `precip_indices()`.

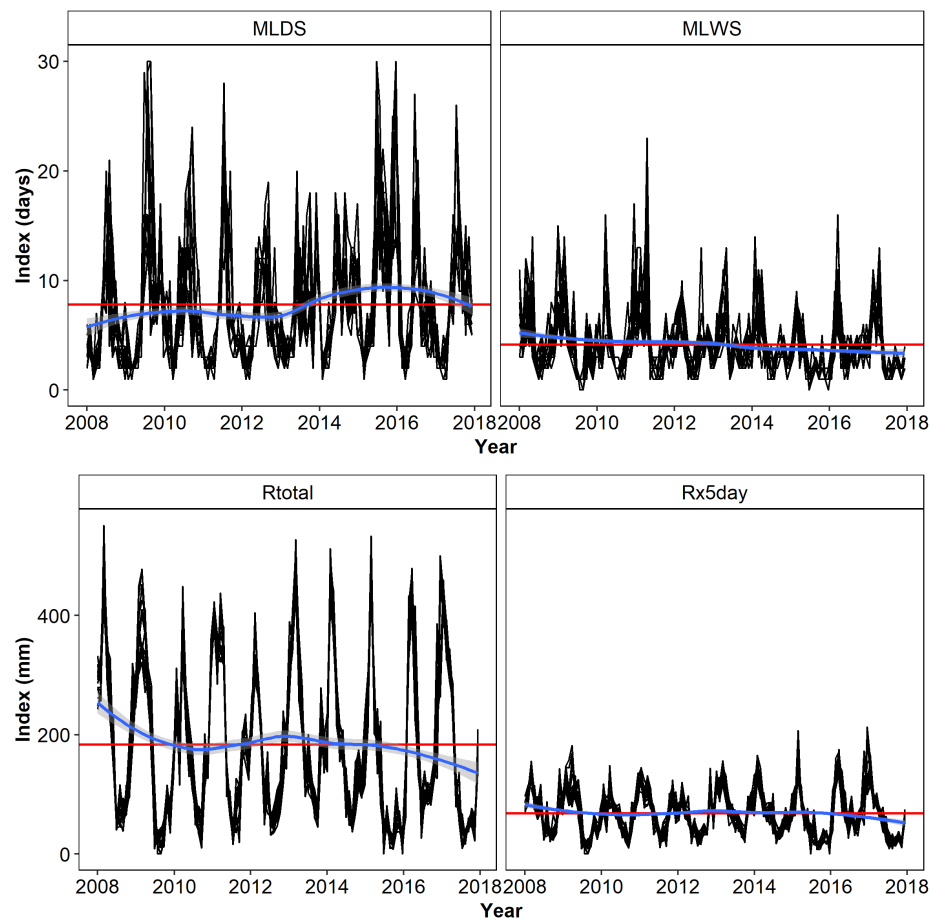
```
library("chirps")
library("sf")

data("tapajos", package = "chirps")
set.seed(1234)
tp <- st_sample(tapajos, 20)
tp <- st_as_sf(tp)

dt <- get_chirps(tp, dates = c("2008-01-01", "2018-01-31"))

p_ind <- precip_indices(dt, timeseries = TRUE, intervals = 30)
```

We selected four indices for the visualization using *tidyverse* (Wickham et al., 2019). Plots were ensembled together using *gridExtra* (Auguie, 2017). Here we see how these indices are changing across the time series (Figure 1). In this quick assessment, we note an increasing extent of consecutive dry days (MLDS) across the time series, with also a decrease in the number of consecutive rainy days (MLWS), which stays above the historical average for MLDS and below the historical average for MLWS. The trends also show a decrease in the total rainfall in the 30-days intervals, staying below the average after 2014. Finally, we note a decrease in maximum consecutive 5-days precipitation, which also stays below the historical average.



**Figure 1:** Trends in precipitation variability across the Tapajós National Forest, Brazil, for the period of 01-Jan-2010 to 31-Dec-2018 with four precipitation indices. MLDS, maximum length of consecutive dry days (days), MLWS, maximum length of consecutive wet days (days), Rtotal, total precipitation (mm), Rx5day, maximum consecutive 5-days precipitation (mm). Red lines indicates the historical mean of each index in the time series. Blue line indicates the smoothed trends in each index using the 'loess' method.

## Other applications and conclusion

Deriving precipitation indices that can be obtained from CHIRPS proved to be an excellent approach to evaluate the climate variability using precipitation data (de Sousa et al., 2018) and the effects of climate change on a continental analysis (Aguilar et al., 2005). Additionally, these indices can be used to register specific effects of climate variability on crop varietal performance. In crop modelling, Kehel, Crossa, & Reynolds (2016) applied this to assess the interactions of wheat varieties with the environment, showing how severe drought, assessed with the maximum length of dry spell (MLDS), can affect the plant development and the yield. These indices can also be useful to improve variety recommendation for climate adaptation in marginal production environments (van Etten et al., 2019).

Overall, CHIRPS data can be used in many applications and currently has over 800 citations from studies using this tool. Many applications are the field of agriculture, hydrologic modelling and drought monitoring, but also some studies using this in disease control programs (e.g. Thomson et al. (2017), Horn et al. (2018)). The *chirps* package aims to make it possible for researchers in these fields to implement this tool into a replicable and reproducible

workflow in R.

## Acknowledgements

This work was supported by The Nordic Joint Committee for Agricultural and Food Research (grant num. 202100-2817). The idea for this package was conceived during the course “Analysing Spatial Data” at the Norwegian School of Economics (NHH), we thank Professor Roger Bivand for his insights.

## References

- Aguilar, E., Peterson, T. C., Obando, P. R., Frutos, R., Retana, J. A., Solera, M., Soley, J., et al. (2005). Changes in precipitation and temperature extremes in Central America and northern South America, 1961–2003. *Journal of Geophysical Research*, 110(D23), D23107. doi:[10.1029/2005JD006119](https://doi.org/10.1029/2005JD006119)
- Anderson, M. C., Hain, C., Wardlow, B., Pimstein, A., Mecikalski, J. R., & Kustas, W. P. (2011). Evaluation of Drought Indices Based on Thermal Remote Sensing of Evapotranspiration over the Continental United States. *Journal of Climate*, 24(8), 2025–2044. doi:[10.1175/2010JCLI3812.1](https://doi.org/10.1175/2010JCLI3812.1)
- Auguie, B. (2017). *gridExtra: Miscellaneous Functions for “Grid” Graphics*. Retrieved from <https://CRAN.R-project.org/package=gridExtra>
- Chamberlain, S. (2019). *crul: HTTP Client*. Retrieved from <https://CRAN.R-project.org/package=crul>
- de Sousa, K., Casanoves, F., Sellare, J., Ospina, A., Suchini, J. G., Aguilar, A., & Mercado, L. (2018). How climate awareness influences farmers' adaptation decisions in Central America? *Journal of Rural Studies*, 64, 11–19. doi:[10.1016/j.jrurstud.2018.09.018](https://doi.org/10.1016/j.jrurstud.2018.09.018)
- Funk, C., Peterson, P., Landsfeld, M., Pedreros, D., Verdin, J., Shukla, S., Husak, G., et al. (2015). The climate hazards infrared precipitation with stations—a new environmental record for monitoring extremes. *Scientific Data*, 2, 150066. doi:[10.1038/sdata.2015.66](https://doi.org/10.1038/sdata.2015.66)
- Horn, L. M., Hajat, A., Sheppard, L., Quinn, C., Colborn, J., Zermoglio, M. F., Gudo, E. S., et al. (2018). Association between precipitation and diarrheal disease in Mozambique. *International Journal of Environmental Research and Public Health*, 15(4). doi:[10.3390/ijerph15040709](https://doi.org/10.3390/ijerph15040709)
- Huffman, G., Bolvin, D., Braithwaite, D., Hsu, K., Joyce, R., & Xie, P. (2014). Integrated Multi-satellite Retrievals for GPM (IMERG), version 4.4. NASA's Precipitation Processing Center. Retrieved from <ftp://arthurhou.pps.eosdis.nasa.gov/gpmdata/>
- Kehel, Z., Crossa, J., & Reynolds, M. (2016). Identifying Climate Patterns during the Crop-Growing Cycle from 30 Years of CIMMYT Elite Spring Wheat International Yield Trials. In A. Bari, A. B. Damania, M. Mackay, & S. Dayanandan (Eds.), *Applied Mathematics and Omics to Assess Crop Genetic Resources for Climate Change Adaptive Traits* (pp. 151–174). CRC Press. doi:[10.1201/b19518-17](https://doi.org/10.1201/b19518-17)
- Ooms, J. (2014). The jsonlite Package: A Practical and Consistent Mapping Between JSON Data and R Objects. *arXiv:1403.2805 [stat.CO]*. Retrieved from <https://arxiv.org/abs/1403.2805>
- Pebesma, E. (2018). Simple Features for R: Standardized Support for Spatial Vector Data. *The R Journal*, 10(1), 439–446. doi:[10.32614/RJ-2018-009](https://doi.org/10.32614/RJ-2018-009)

- R Core Team. (2020). *R: A language and environment for statistical computing. Version 4.0.0*. Vienna, Austria: R Foundation for Statistical Computing. Retrieved from <https://www.R-project.org/>
- SERVIR Global. (2019a). *Evaporative stress index (ESI)*. National Aeronautics and Space Administration (NASA); United States Agency for International Development (USAID). Retrieved from <https://climateserv.servirglobal.net/>
- SERVIR Global. (2019b). *ClimateSERV*. National Aeronautics and Space Administration (NASA); United States Agency for International Development (USAID). Retrieved from <https://climateserv.servirglobal.net/>
- Thomson, M. C., Ukawuba, I., Hershey, C. L., Bennett, A., Ceccato, P., Lyon, B., & Dinku, T. (2017). Using rainfall and temperature data in the evaluation of national malaria control programs in Africa. *American Journal of Tropical Medicine and Hygiene*, 97, 32–45. doi:[10.4269/ajtmh.16-0696](https://doi.org/10.4269/ajtmh.16-0696)
- van Etten, J., de Sousa, K., Aguilar, A., Barrios, M., Coto, A., Dell'Acqua, M., Fadda, C., et al. (2019). Crop variety management for climate adaptation supported by citizen science. *Proceedings of the National Academy of Sciences*, 116(10), 4194–4199. doi:[10.1073/pnas.1813720116](https://doi.org/10.1073/pnas.1813720116)
- Wickham, H., Averick, M., Bryan, J., Chang, W., D'Almeida, L., McGowan, A., François, R., et al. (2019). Welcome to the Tidyverse. *Journal of Open Source Software*, 4(43), 1686. doi:[10.21105/joss.01686](https://doi.org/10.21105/joss.01686)