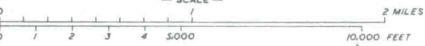


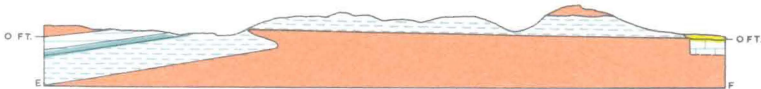
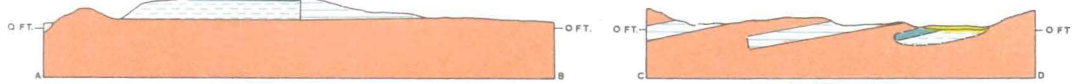
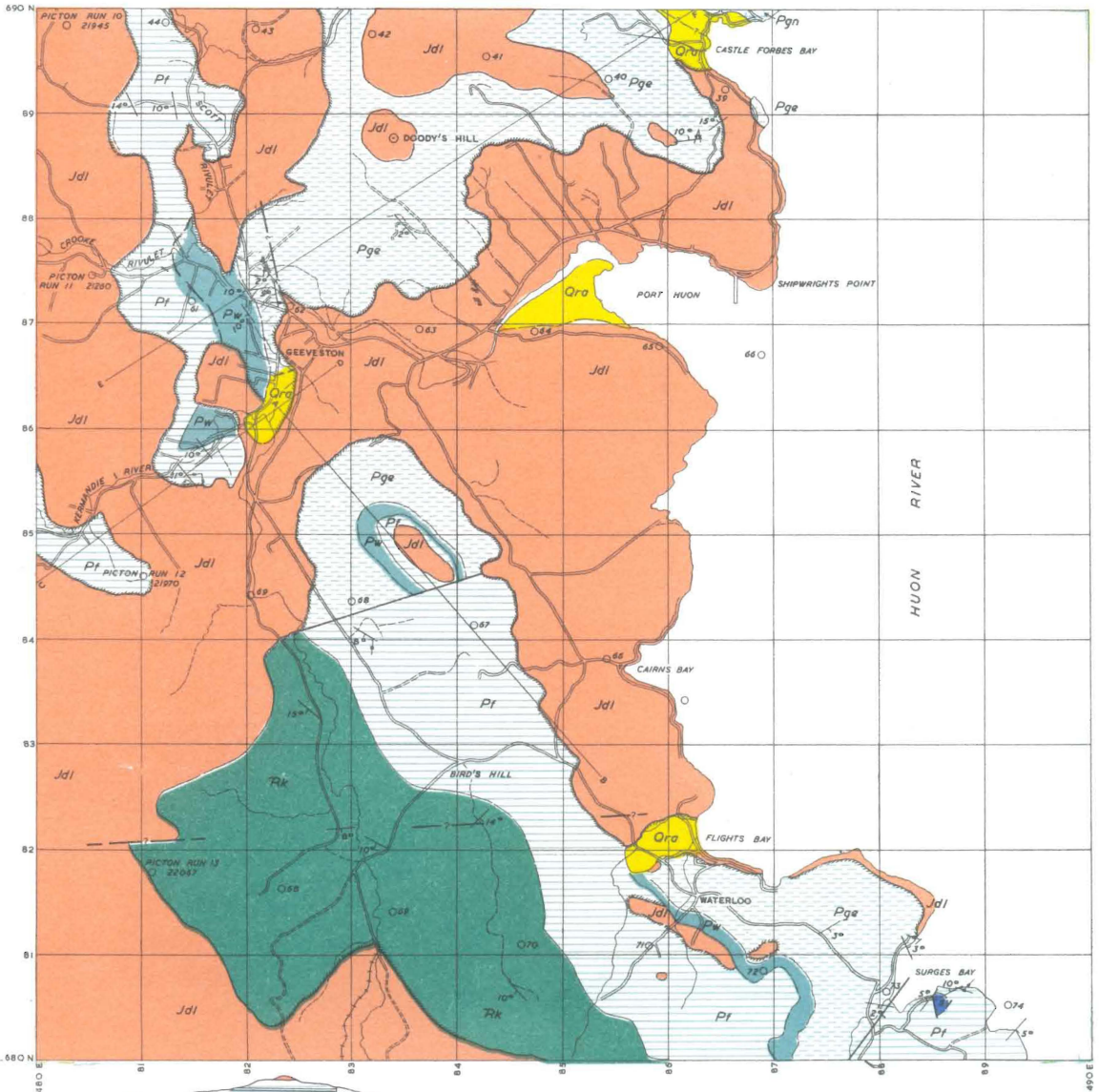
- |— FAULT WITH DOWNTROW SIDE INDICATED
- |— FAULT - POSITION APPROXIMATE
- |-|- FAULT INFERRED
- |— FORMATION BOUNDARY
- |— DOLERITE BOUNDARIES
- |— CONCORDANT SILL
- |— DISCORDANT INTRUSIVE BOUNDARIES
- |— DISCORDANT INTRUSIVE BOUNDARIES WITH CONCOMITANT FAULTING
- |— VERTICAL JOINTS
- |— STRIKE AND DIP
- |— ROADS
- |— VEHICULAR TRACK
- |— TRACK
- |— TRAMWAY
- |— DISUSED TRAMWAY
- HORIZONTAL CONTROL STATION



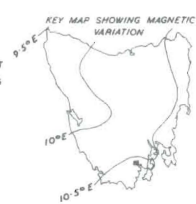
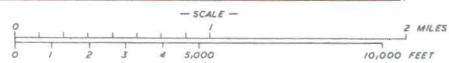
Compilation from Aerial Photographs.  
Trigonometric Station Control by courtesy Lands and Surveys Dept.  
Origin of coordinates 400,000 yds. West and 1,800,000 yds. South of True Origin of Zone 7.

MAPPED AND COMPILED BY  
R J FORD JANUARY 1952

- Quaternary System
- RECENT SERIES
- Qra ALLUVIUM
- Triassic System
- Rr FELSPATHIC SANDSTONE
- Rk KNOCKLOFTY SANDSTONE AND SHALE
- Permian System
- Pt FERNTREE MUDSTONE
- Pw WOODBRIDGE GLACIAL FORMATION
- Pge GRANGE MUDSTONE
- Jurassic System
- Jdl DOLERITE
- Sp SYENITE PORPHYRY



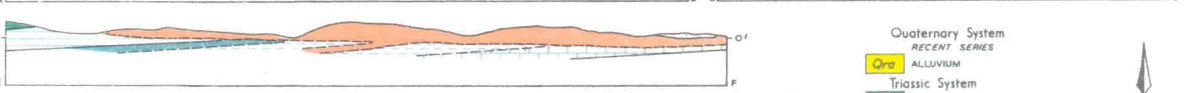
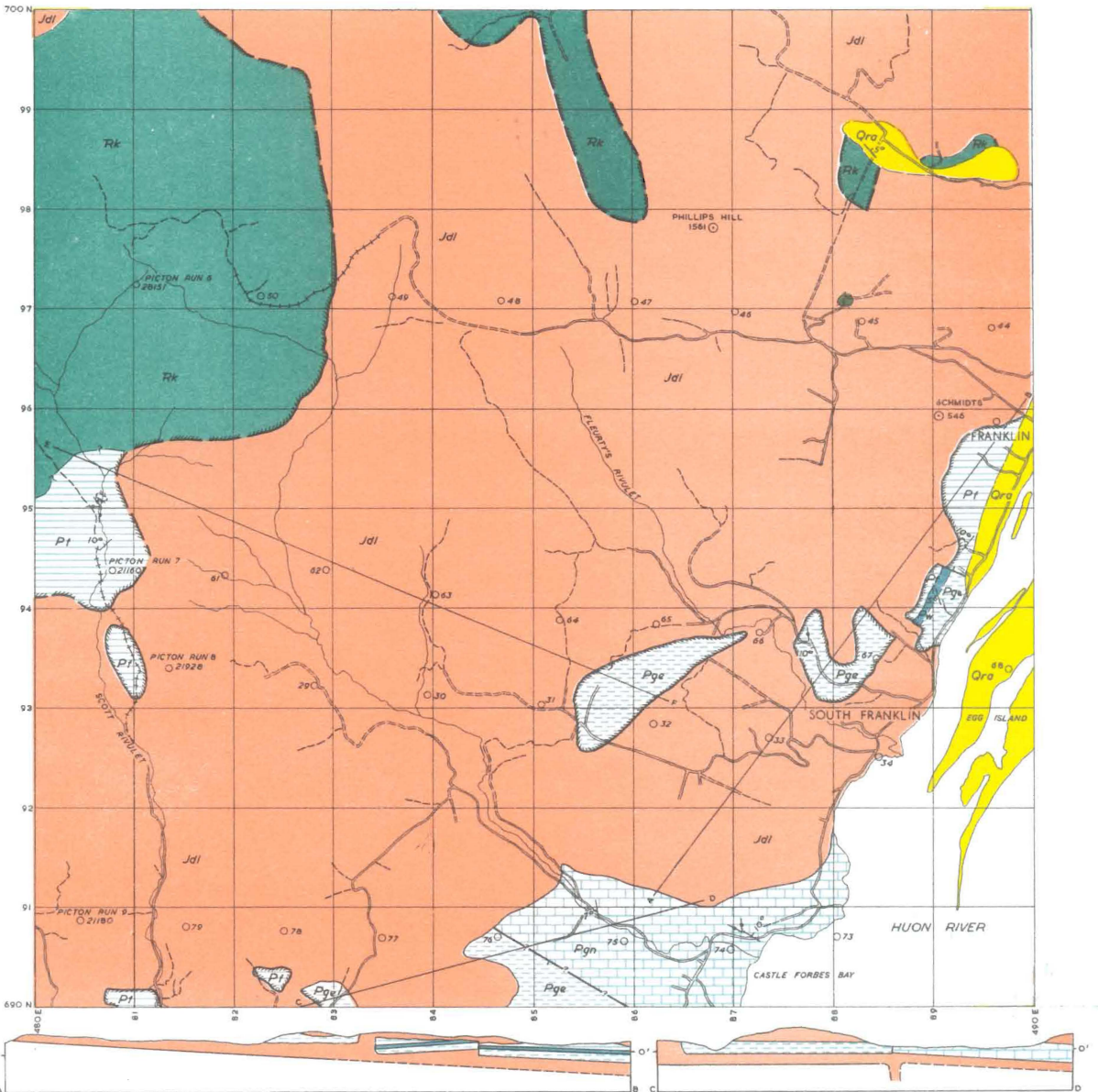
- FAULT WITH DOWNTROW SIDE INDICATED
- FAULT - POSITION APPROXIMATE
- - - FAULT INFERRED
- FORMATION BOUNDARY
- DOLERITE BOUNDARIES
- CONCORDANT SILL
- DISCORDANT INTRUSIVE BOUNDARIES
- DISCORDANT INTRUSIVE BOUNDARIES WITH CONCOMITANT FAULTING
- VERTICAL JOINTS
- STRIKE AND DIP
- ROADS
- VEHICULAR TRACK
- TRACK
- TRAMWAY
- HORIZONTAL CONTROL STATION



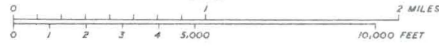
Compilation from Aerial Photographs.  
 Triangulation Station Control by  
 courtesy Lands and Surveys Dept.  
 Origin of coordinates 400,000 yds.  
 West and 1,800,000 yds. South of  
 True Origin of Zone 7

MAPPED AND COMPILED BY  
 R J FORD JANUARY 1952

- Quaternary System
- RECENT SERIES
- Ora ALLUVIUM
- Triassic System
- Rk KNOCKLOFTY SANDSTONE AND SHALE
- Permian System
- Pf FERNTREE MUDSTONE
- Pw WOODBRIDGE GLACIAL FORMATION
- Pgr GRANGE MUDSTONE
- Pgn GRANTON LIMESTONE
- Jurassic System
- Jdl DOLERITE
- Sp SYENITE PORPHYRY



- FAULT WITH DOWNTROW SIDE INDICATED
- - - FAULT—POSITION APPROXIMATE
- · - · - FAULT INFERRED
- FORMATION BOUNDARY
- DOLERITE BOUNDARIES
- CONCORDANT SILL
- · - · - DISCORDANT INTRUSIVE BOUNDARIES
- · - · - DISCORDANT INTRUSIVE BOUNDARIES WITH CONCOMITANT
- VERTICAL JOINTS
- STRIKE AND DIP
- ROADS
- VEHICULAR TRACK
- TRACK
- TRAMWAY
- DISUSED TRAMWAY
- HORIZONTAL CONTROL STATION



Compilation from Aerial Photographs. Trigonometric Station Control by courtesy Lands and Surveys Dept. Origin of co ordinates 400,000 yds. West and 1,800,000 yds. South of True Origin of Zone 7.

MAPPED AND COMPILED BY  
R J FORD AND R P MATHER  
JANUARY 1952

- Quaternary System
- RECENT SERIES
- Ora ALLUVIUM
- Triassic System
- Rk KNOCKLOFTY SANDSTONE AND SHALE
- Permian System
- Pf FERNTREE MUDSTONE
- Pg WOODBRIDGE GLACIAL FORMATION
- Pge GRANGE MUDSTONE
- Pgn GRANTON LIMESTONE
- Jurassic System
- Jdl DOLERITE