

# Towards a Software Tool Supporting Urban Decision Makers in Locating and Sizing the Household Garbage Accumulation Points Within Cities

Paolino Di Felice

Department of Industrial and Information Engineering & Economics, University of L'Aquila, L'Aquila, Italy

Locating and sizing garbage bins for the separate accumulation of household solid waste within urban areas is of primary interest for the local administrations that so far lack adequate IT support. The paper highlights the versatility of a method for solving such a problem, which involves both standard and geographic data. Implementation of the proposal, centered around a spatial database, goes in the direction of developing a supporting software tool to the officials responsible for the management of municipal solid waste. They are offered a dual-mode display of the results: one tabular (the standard format featured by relational databases) and the other based on the metaphor of geographic maps, the latter being particularly useful in capitalizing on the spatial component of the problem.

*Keywords:* solid waste, garbage accumulation point, garbage bin, algorithm, integrated spatial and descriptive data, SQL, decision support system

## 1. Introduction

“Managing solid waste (SW) well and affordably is one of the key challenges of the 21st century, and one of the key responsibilities of a city government” (UN-HABITAT, 2010). The quality of waste management services is a good indicator of a city’s governance. The way in which waste is produced and discarded gives us a key insight into how people live. In fact, if a city is dirty, the local administration may be considered ineffective or its residents may be accused of littering.

The major types of urban SW are residential and commercial. Households are the high-producers of municipal waste (EEA, 2013).

Damghani et al. (2008) report that in Tehran, the capital of Iran, the contribution of the household SW to the total municipal SW is around 62%. A similar estimation about the Americans’ production of residential SW is reported in (US EPA, 2010).

Tchobanoglous et al. (1993) categorize the activities of a municipal SW management system as a six steps procedure: waste generation; handling, separation, storage, and processing at the source (in the following briefly called *accumulation*); collection; transfer and transport; separation, processing and transformation; and disposal.

In Italy, nowadays, SW is accumulated using two complementary methods. For many years, the municipalities have spread on the major crossroads in the towns large-sized garbage bins (GBs). Daily, households put their SW in these public containers, while, cyclically, municipality-owned machines take away the SW from them. A more recent method consists of providing families with much smaller GBs and municipal workers collect the garbage door-to-door. So far, the first method covers the largest waste disposal production. That is why this study refers to such a scenario.

From the citizens’ point of view, SW accumulation and collection are among the most visible urban services. If properly implemented, they contribute:

- to keep modern towns clean;

- to develop the culture of urban cleanliness;
- to protect municipal workers dealing with the collection and transportation of infectious waste materials (Miyazaki et al., 2007);
- to protect the health of pets (they regularly visit GBs looking for food residues, with the tangible risk of getting sick) and, therefore, they contribute to protect the health of residents, too;
- to keep high the market value of the apartments in the area;
- to get high residents' satisfaction. In fact, the effectiveness of garbage accumulation and collection is a variable largely used in the studies investigating the satisfaction of individuals living in the urban areas, e.g., (Felix & Garcia-Vega, 2012).

Unfortunately, spatial distribution of the garbage accumulation points (GAPs) inside towns does not take the needs of local residents into account in terms of the quantities of waste produced and the distance from their dwelling (Parrot et al., 2009). That induces the following two side effects: a) often the GBs are full and, in those cases, the citizens' decision is to leave the bags of garbage outside the GBs; b) when the distance to the closest GB is long, households tend to dispose the domestic waste in open areas. Similar concerns about inconvenient location of the GAPs are expressed by Zia & Devadas (2008).

In our opinion, the only way to overcome those limits is to provide local administrators with an ad hoc software tool assisting them during the GBs allocation phase. This work was meant to give a contribution in the direction of developing a software tool of this type.

The tool has to be developed on top of a general method that solves “correctly” what in the remainder of the paper we call the solid waste accumulation problem (SWAP). Here, correctly means to come to a location of the GAPs in the urban territory, linked to the distance from the house of the citizens; moreover, the number of bins per GAP has to be adapted to the amount of waste “locally” produced by the citizens. Doing so, both drawbacks mentioned above should disappear.

### 1.1. Related Work

A huge amount of research has been done about facility location problems in the field of operational research; for a survey see (ReVelle & Eiselt, 2005). However, as remarked by Ghiani et al. (2012), contrarily to other location problems in the context of urban waste management, the SWAP has received little attention in the literature and only quite recently.

The unique papers pertinent to the topic are listed and compared in Table 1. The second column in Table 1 tells us that all the papers solve the problem of locating the GAPs in the urban territory to be served. Their common objective is to minimize the number of GAPs in order to reduce: a) the initial cost of buying the GBs, b) the collection time, and, finally c) the negative visual impact caused by the presence of the GBs near residential buildings.

The third column shows that only the last three papers also compute the sizing of GBs inside each GAP, while the first two do not.

The fourth column tells us about the way those papers take into account the distance between the dwellings and about what in this study we

	Locating of GAPs	Sizing of GBs	Dwelling-GAP distance	Collection
(Badran & El-Haggar, 2006)	Yes	No	No	Unsorted waste
(Bautista & Pereira, 2006)	Yes	No	Yes ( <i>maximum</i> distance)	Unsorted waste
(Tralhão et al., 2010)	Yes	Yes	Yes ( <i>average</i> distance)	Sorted waste
(Ghiani et al., 2012)	Yes	Yes	Yes ( <i>maximum</i> distance)	Unsorted waste
Present contribution	Yes	Yes	Yes ( <i>maximum</i> distance)	Sorted waste

Table 1. The related work.

call the *reference* GAP, that is, the GAP closest to the houses. (Badran et al., 2006) ignore the issue, while (Tralhão et al., 2010) minimize the average distance from dwellings to the reference GAP. The remaining three papers take the distance dwelling-(reference)GAP within a fixed maximum threshold. It is fundamental to guarantee that each family has, at a “suitable” distance, a GAP and this assures an adequate quality of the service to all residents in the area. Relevance of this issue has been pointed out clearly in numerous studies about the “quality of life”, e.g., (Felix & Garcia-Vega, 2012). Quality of the service of accumulation and collection of the household waste is perceived as relevant by citizens for two reasons. Because they support this service by paying taxes and, therefore, it is quite obvious that they have expectations regarding the quality of the returned service, and, moreover, because of the growing public concern about environmental preservation.

The last column in Table 1 specifies whether the SW is accumulated/collected in a sorted or unsorted way.

Ghiani et al. (2012) give two alternative solutions of the SWAP: the first adopts an integer programming model, while the second adopts a two-phases heuristic approach. They introduced the latter approach because the complexity of the integer programming model makes it very difficult to be solved optimally within a reasonable time by means of a general purpose solver. The method we propose in this paper bears a likeness to the heuristic approach by Ghiani et al. (2012), with which it shares also the motivation of finding a good solution of the SWAP in a short computational time.

Ghiani et al. (2012) start from a given set of GAPs located at a known position inside the city and return the minimum number of reference collection sites to be allocated, chosen among the initial candidates. In our approach, on the contrary, the reference GAPs may be located at any point of the city roads (same assumption as in Bautista & Pereira, 2006) and their number and position result from the elaboration of a method determined by the “urban geography” of the dwellings to be served.

The remainder of the paper is structured as follows. Section 2 defines the SWAP inside modern towns and lists our notations. Section 3

focuses on two algorithms that together provide a general solution of the SWAP by integrating spatial and descriptive data. The first algorithm determines the location of the GAPs in the urban territory to be served, while the second allocates the number of bins to each GAP. The position of the GAPs is set by taking into account the distance from the house of the citizens, while the number of bins is adequate to the amount of litter produced “locally” on daily basis. Such two-phases method has been introduced in (Di Felice, 2013). The algorithms strictly refer to the accumulation of the residential SW, but they can be easily adapted to other types of litter (e.g., the commercial SW). Section 4 touches on a way to implement the two algorithms in terms of open source software, while Section 5 reports about a pilot study applied to a political district of the town of L’Aquila (central Italy), whose results are presented and discussed in Section 6. Those three sections show a simple and effective way to implement the theory using the technology of the spatial database management systems (SDBMSs), and, more important, the versatility of the proposed solution from the point of view of those responsible for municipal SW management who, in fact, is offered a dual-mode display of the results: one tabular (typical of relational databases) and the other based on geographical maps, this latter particularly useful to capitalize on the spatial component of the SWAP. Together, these two operational modes provide a very effective assistance to decision makers. Section 7 focuses on the flexibility of the first algorithm in the allocation of dwellings to the GAPs and on the positive effects of such a feature. Section 8 lists a few SQL pattern queries that make explicit the analysis on demand dimension embedded in the SDBMS-centric implementation we carried out. In fact, by querying the spatial database (SDB), it is possible to extract a lot of extra information from the SDB not easily obtainable in any other way. Section 9 ends the paper.

## 2. The Solid Waste Accumulation Problem

Mathematically, the SWAP can be modeled as a bipartite directed graph  $G(V1UV2, A)$ , where  $A=V1xV2$ ; the vertices in  $V1$  represent the dwellings (i.e., the waste generation sources)

and  $V_2$  represent the GAPS. To each arc a numerical value ( $dist_{ij}$ ) can be associated, representing the distance between dwelling  $i$  and its potential reference GAP ( $j$ ). Ghiani et al. (2012) start from a given set of GAPS located at known position inside the city, therefore they have  $V_1$ ,  $V_2$ , and  $dist_{ij}$  as inputs. Contrarily, we ignore the geographical position of the vertices in  $V_1$  (and hence the values  $dist_{ij}$ ), because, as already noted, in our case the GAPS may be located at any point of the city roads.

At a less abstract level, the SWAP inside modern towns can be formulated as follows: given the set of houses and public roads (the *spatial data*) being a part of an urban area (Figure 1a), the goal is to compute the location of the GAPS in the area as well as sizing the number of bins. Further relevant data of the problem (they all together give rise to the *descriptive data*) relate to the type of waste to be stored in the GAPS, capacity of the GBs, the frequency of emptying the GBs of various types, the number of inhabitants in each house in the area to be served, and their per capita daily production of SW.

We solve the SWAP under the following constraints:

- the GAPS have to be placed on the public roads;
- every house must have its reference GAP at a distance (measured along the public roads) not greater than a predetermined value;
- the number of bins for the different types of waste in each GAP must be allocated according to the daily production of household waste of the district.

## Notations

Hereafter we use the following notations:

*District* is the urban area to be served with GAPS,

$\mathcal{R} = \{r_1, r_2, \dots, r_R\}$  is the set of public roads crossing the *District*. The generic element of  $\mathcal{R}$ ,  $r_j$ , is a triple  $\langle id, name, the\_geom \rangle$  whose values, in sequence, denote the unique identifier of the road, its name, and the geometry modeling its shape,

$\mathcal{H} = \{h_1, h_2, \dots, h_H\}$  is the set of houses located inside the *District*. By house we mean a building having a certain shape on the ground. We do not care about the number of floors composing each building, while the number of people living in it is relevant. The generic element of  $\mathcal{H}$ ,  $h_j$ , is defined by the tuple  $\langle id, road\_id, num, density, the\_geom, the\_geom\_c, the\_geom\_h \rangle$  whose values, in sequence, denote the unique identifier of the house, the unique identifier of the *reference* public road (that is the road that specifies the building's address), the house number, the number of occupants in the dwelling, the geometry of its layout (i.e., a polygon), the simplified geometry of the dwelling (i.e., the centroid of the polygon), the geometry of the projection of the centroid of the dwelling on the reference public road. Figure 1b shows the geometry of the layout of the houses, their centroid and the projection of the centroid on the reference road. From here on, when talking about dwellings, we always refer to the projection of their centroid on the reference road; therefore, the scene in Figure 1a is replaced with that in Figure 1c,

$\mathcal{GB} = \{gb_1, gb_2, \dots, gb_{GB}\}$  is the set of the different types of GBs that are part of each GAP. In the study, we take into account the following five types: *glass, plastic, paper, organic, and unsorted*, but the solution method is general, so it can be adapted to work under different assumptions. The

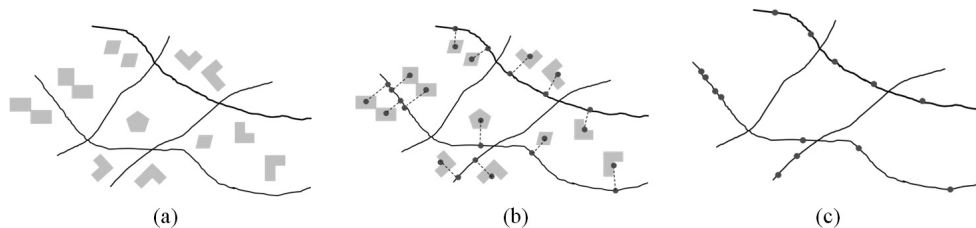


Figure 1. A scene of roads and houses (a); the original scene plus the centroid of each house and the projection of the centroid on the reference road (b); the roads and the projection of the centroids of the houses on the roads (c).

generic element of  $\mathcal{GB}$ ,  $gb_j$ , is defined by the tuple  $\langle id, type, capacity, collection \rangle$  whose values, in sequence, denote the unique identifier of the GB, its type, its capacity ( $m^3$ ), and the frequency of collection (days) from municipality's workers. For example, the tuple  $\langle 1, glass, 1.8, 7 \rangle$  specifies that the GB is of type glass, it has id 1, capacity  $1.8 m^3$ , and weekly frequency of collection,

$\mathcal{GAP} = \{gap_1, gap_2, \dots, gap_{GAP}\}$  is the set of GAPs to be dislocated in the *District*. The generic element of  $\mathcal{GAP}$ ,  $gap_j$ , is defined by the tuple  $\langle id, the\_geom, road\_id, glass, plastic, paper, organic, unsorted, rs, hs \rangle$  whose values, in sequence, denote the unique identifier of the GAP, its coordinates, the id of the public road where  $gap_j$  is located, the number of GBs for glass, plastic, paper, organic, and unsorted, and, lastly, the total number of residents and houses that the GAP is able to serve,

`housesServedBy_aGAP[]` is an array of sets data structure having a number of components equal to the cardinality of  $\mathcal{GAP}$ . The component `housesServedBy_aGAP[k]` stores the (sets of) identifiers of the houses served by the GAP having identifier equal to  $k$ ,

*dailyGlass*, *dailyPlastic*, *dailyPaper*, *dailyOrganic*, and *dailyUnsorted* denote, in sequence, the per capita daily generation (in

$m^3$ ) of the five different types of SW we refer to in the paper,

*Distance* denotes the value of the maximum distance between each house and the reference GAP (that is the GAP closest to the house).

All identifiers are positive integers starting from one. Moreover, in the algorithms we are going to present, we use, for brevity, the notation "*record\_name.field\_name*" linking a composite variable (*record*) to one of its parts (*field*). Therefore, for example,  $gap_j.id$  denotes the identifier of the element  $gap_j$  of set  $\mathcal{GAP}$ .

### 3. A Strategy to Solve the SWAP

The solution of the SWAP is obtained in two stages via the algorithms *LocatingOfGAPs* and *SizingOfGAPs* to be invoked in sequence. As mentioned in the Introduction, this schema has analogies with the two-phases heuristic approach proposed by Ghiani et al. (2012).

*LocatingOfGAPs* takes as input the sets  $\mathcal{H}$  and  $\mathcal{R}$ , and the value of *Distance* and returns the set  $\mathcal{GAP}$  and the data structure `housesServedBy_aGAP[]` to be used as input of the algorithm *SizingOfGAPs*. After the set  $\mathcal{GAP}$  is initialized, the **FOR EACH** loop is activated. It runs until all the public roads in  $\mathcal{R}$  have been visited. The visit of the generic road (*Line 3*) is devoted to locate the position where the GAPs have to

---

#### Algorithm **LocatingOfGAPs**

Input:  $\mathcal{H}, \mathcal{R}, Distance$

Output:  $\mathcal{GAP}$  and `housesServedBy_aGAP[]`. The generic tuple of  $\mathcal{GAP}$  has value:  $\langle id, geom, road\_id, NULL, NULL, NULL, NULL, NULL, NULL, NULL \rangle$

Method:

1. **Set**  $\mathcal{GAP}$  to the empty set.
  2. **FOR EACH**  $r$  in  $\mathcal{R}$
  3.     move along  $r$  and locate on it the GAPs according to the constraint that the distance (reference) GAP-house is at most equal to *Distance*.
  4.     **Add** to  $\mathcal{GAP}$  all the GAPs located along  $r$ .
  5.     Let  $gap$  be one of such GAPs and  $H_r$  be the set of the identifiers of the houses on  $r$  served by it.  $gap.id$  denotes the identifier of  $gap$ .
  6.     **Set**  $gap.geom$  to the position of  $gap$  on  $r$ . **Set**  $gap.road\_id = r.id$ . **Set** to NULL the remaining values of the record about  $gap$ .
  7.     **Add** the identifiers in  $H_r$  to the set `housesServedBy_aGAP[ $gap.id$ ]`.
  8.     **Explore** the neighbourhood of  $gap.geom$  to identify further houses (if any) that do not have  $r$  as the reference road, but that can be served by  $gap$  since it is distant less than *Distance* from them. Let  $H^*$  be the set of the identifiers of those houses.
  9.     **Add** the identifiers in  $H^*$  to the set `housesServedBy_aGAP[ $gap.id$ ]`.
  10. **END FOR EACH**
-

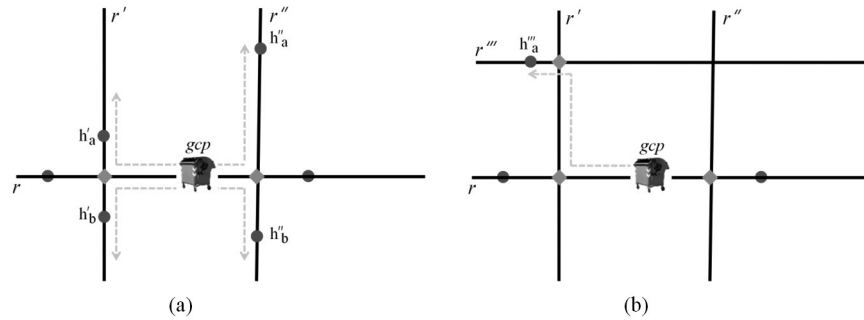


Figure 2. Dwellings close to the GAP gap (schematically represented by one of the GBs being part of it) located on road  $r$ , but having as reference road one different from  $r$ .

be allocated. The decision takes into account the value of the geometry of the projection of the centroid of the dwellings having  $r$  as the reference road (the field *the\_geom\_h* of Section 2; see also Figure 1c) and the value of *Distance*. Each time a position is found, the algorithm sets the values of the fields *gap.id*, *gap.geom*, and *gap.road\_id* of the record referring to *gap*, while the remaining fields are set to NULL (Lines 5 and 6). Line 7 copies the identifiers of the dwellings located along  $r$  and served by the GAP *gap* in the set *housesServedBy\_aGAP[*gap.id*]*. All those dwellings have *gap* as the reference GAP.

The purpose of Line 8 is to identify further houses (if any) that do not have  $r$  as the reference road, but that can be served by *gap* since it is distant less than *Distance* from those dwellings. There are two possible situations to be investigated. The first one (Figure 2a) is that

of houses that lie on roads that intersect  $r$  near to the point where is positioned *gap*. In the figure,  $r$  is intersected by roads  $r'$  and  $r''$  at the points marked as diamonds. By hypothesis,  $H^* = \{h'_a, h'_b, h''_a, h''_b\}$ , i.e., the dwellings  $h'_a, h'_b, h''_a$  and  $h''_b$  are considered to be served by *gap*. The second situation (Figure 2b) is about houses that lie on roads different either from  $r$  or from the streets that intersect  $r$ , but still they are close to *gap*. In Figure 2b, by hypothesis, house  $h'''_a$ , located on the road  $r'''$ , is distant less than *Distance* from *gap* and, therefore, it can be served by such a GAP. In summary,  $H^* = \{h'_a, h'_b, h''_a, h''_b, h'''_a\}$ . Also the dwellings in  $H^*$  have *gap* as the reference GAP. At the end of each iteration, the set *housesServedBy\_aGAP[*gap.id*]* collects the identifiers of all the roads in  $\mathcal{H}$ , served by *gap*, independently of their reference road.

---

Algorithm **SizingOfGAPs**

Input:  $\mathcal{H}$ ,  $\mathcal{GB}$ ,  $\mathcal{GAP}$ , *housesServedBy\_aGAP[]*, *dailyGlass*, *dailyPlastic*, *dailyPaper*, *dailyOrganic*, and *dailyUnsorted*

Output:  $\mathcal{GAP}$  updated

Method:

1. **FOR EACH** *gap* in  $\mathcal{GAP}$
  2.     **Copy** *housesServedBy\_aGAP[*gap*]* into HS
  3.     **Set** *gap.rs* equal to the sum of values  $h_j.density$  ( $j=1, 2, \dots, |HS|$ ), where  $h_j$  belongs to HS
  4.     **Set** *gap.hs* to  $|HS|$
  5.     **Compute** the number of different types of GBs that make up the GAP *gap* by taking into account:
    - a) their capacity (i.e., *gb.capacity*),
    - b) the daily per capita generation of SW of different typologies from the *gap.rs* residents, and
    - c) the periodicity of waste collection of different typologies (i.e., *gb.collection*)
  6.     **UPDATE** the fields *glass*, *plastic*, *paper*, *organic*, *unsorted* of *gap*
  7. **END FOR EACH**
-

A more detailed version of the algorithm *LocatingOfGAPs* may be found in (Di Felice, 2013).

*SizingOfGAPs* updates the values of the records of the set  $\mathcal{GAP}$  relatively to the fields left to NULL by *LocatingOfGAPs*. The algorithm repeats, for each GAP in  $\mathcal{GAP}$ , the following steps. Let gap be the generic GAP. Initially, the content of the set `housesServedBy_aGAP[gap]`, i.e., all the dwellings served by gap, is copied into the variable HS (*HouseServed*). Then (*Line 3*), the total number of citizens that gap can serve is calculated. This is done by adding to `gap.rs` the number of inhabitants in each of the houses present in HS. *Line 4* sets the field `gap.hs` to the value of the number of houses served by gap. The next step (*Line 5*) computes the number of GBs of the five types taken into account in our study. For example, the number of GBs for the glass is calculated as follows:

$$\text{gap.glass} = (\text{gap.rs} * \text{dailyGlass} * \text{glass.collection}) * 0.85 / (\text{glass.capacity}).$$

Set `gap.rs=165`, `dailyGlass=0.005 m3`, `glass.collection=7`, and `glass.capacity=1.8 m3`, it follows that `gap.glass = 2.73` that is rounded up to 3. The value 0.85 introduces a margin of caution in estimating the number of GBs. Obviously, this threshold can be changed as desired or eliminated altogether.

The final step of the sizing algorithm consists of updating the fields *glass*, *plastic*, *paper*, *organic*, *unsorted* of gap.

#### 4. Implementation

The implementation of algorithms *LocatingOfGAPs* and *SizingOfGAPs* was achieved in two

steps. The first step was about the design of a SDB and its subsequent implementation in PostgreSQL/PostGIS, followed by loading in it the spatial and descriptive data necessary to solve the SWAP. Then, we coded the two algorithms in the language PL/pgSQL (<http://www.postgresql.org/docs/9.1/static/plpgsql.html>) as user defined functions (UDFs).

The SDB is composed of the following five tables (the primary keys are underlined):

```
road (id, name, the_geom);
house (id, road_id, GAP_id, num,
density, the_geom, the_geom_c,
the_geom_h);
GAP (id, the_geom, road_id, glass,
plastic, paper, organic,
unsorted);
GB (id, type, capacity, collection);
GAP_GB (GAP_id, GB_id);
```

road, house, GAP, and GB store, in sequence, the elements in the sets  $\mathcal{R}$ ,  $\mathcal{H}$ ,  $\mathcal{GAP}$ , and  $\mathcal{GB}$ .

The above relational schema comes from the conceptual schema of Figure 3, where for each entity the identifying attribute and the (min, max) participation constraints in the relationships are shown.

The implementation of algorithms *LocatingOfGAPs* and *SizingOfGAPs* as UDFs has been greatly facilitated by the use of the following PostGIS functions: `ST_Area()`, `ST_Centroid()`, `ST_Distance()`, `ST_Intersection()`, `ST_Intersects()`, `ST_Length()`, `ST_Line_Interpolate_Point()`, `ST_LineMerge()`, `ST_Line_Locate_Point()`, `ST_Line_Substring()`, `AddGeometryColumn()`.

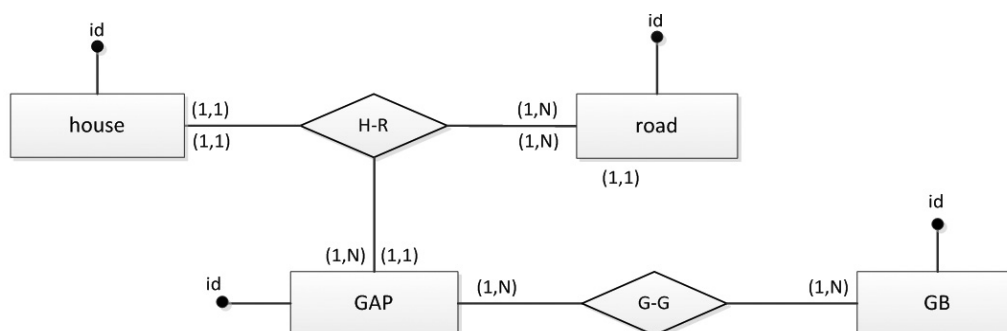


Figure 3. The conceptual schema of the SDB.

The computation of the set  $H^*$  (*Line 8*, algorithm *LocatingOfGAPs*) with regard to a given GAP, let say *gap*, requires the visit of *all* the routes that lead to dwellings not far away from *gap* more than *Distance* moving along the public roads. This action is carried out by visiting in depth the graph having as nodes the end points of the roads in  $\mathcal{R}$ , the crossings between the roads in  $\mathcal{R}$ , the houses in  $H$ , and the GAPs in  $\mathcal{GAP}$  and, as arcs, segments of the roads in  $\mathcal{R}$  delimited by pairs of nodes. The distances between pairs of points situated along the roads are computed as the shortest path between them.

The software architecture of the implementation (Figure 4) offers two major benefits: first of all, it relies on the SDBMS technology which

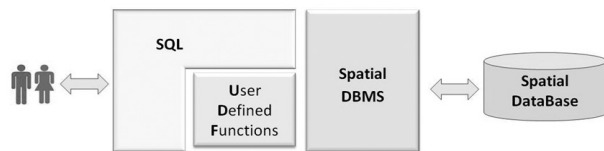


Figure 4. The software architecture of the implementation.

allows to take advantage of the expressiveness of the SQL language for querying the SDB (expressiveness that can be further improved by invoking either some of the implemented UDFs or the built-in functions); second, it makes exclusive use of open source software, a choice today in a sense mandatory for the municipal administrations chronically short of cash flow.

## 5. Study Area and Input Datasets

### The Cansatessa district

As study area, about 7 km<sup>2</sup>, we refer to the political district of Cansatessa, part of the town of L'Aquila (the capital of the Abruzzo region; central Italy). In the district, 1464 inhabitants, are distributed in 226 buildings (Figure 5, left side), while there are 17 public roads.

L'Aquila municipality is responsible for the management of the SW life cycle in all the districts, including Cansatessa. Figure 6 shows the five categories of large-sized GBs currently adopted, while their capacity is given in Table 2.



Figure 5. A Google view of the district of Cansatessa (42° 23' 0" N, 13° 20' 35" E), L'Aquila (Italy) (left side). The public roads and the houses of Cansatessa extracted from a shape file of the Abruzzo region (right side) and displayed by using QGIS.

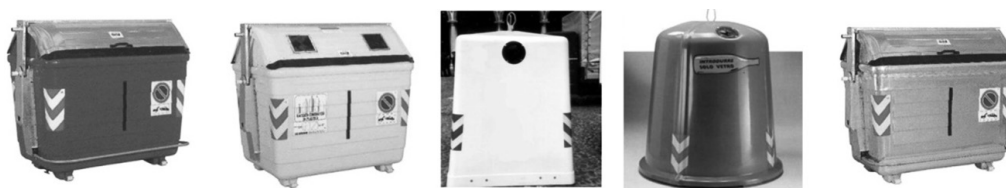


Figure 6. The categories of large-sized GBs used in all the districts of L'Aquila. From left to right they store: organic waste (i.e., biodegradable waste coming from the kitchen scraps), plastic, paper/cardboard, glass, and unsorted waste.



According to the last available regional report (OBRA, 2011), this method of accumulation in the municipality of L'Aquila covers 83.57% of the total waste generated by the residents.

Types of household SW	Frequency of collection	Capacity of the GBs (m <sup>3</sup> )
Organic	Each 3 days	2.4
Plastic	Each 3 days	2.4
Paper/cardboard	Each 5 days	3.3
Glass	Each 7 days	1.8
Unsorted	Daily	2.4

Table 2. The capacity of the different types of GBs adopted in the municipality of L'Aquila and the periodicity of collection by means of municipal garbage trucks.

Table 3 summarizes the current situation in the district of Cansatessa in terms of GAPs and GBs.

Total number of GAPs	Total number of GBs of the five different types used					Total number of GBs
	Glass	Paper	Plastic	Organic	Unsorted	
6	5	5	5	6	9	30

Table 3. GAPs and GBs in Cansatessa.

### The datasets

The datasets concern both spatial and descriptive data.

### The spatial data

The spatial data concerning public roads and houses of Cansatessa were extracted (in the ESRI shape format) from the Regional Numerical Map at the 1-5000 scale provided by the Abruzzo Region (<http://www.regione.abruzzo.it/xcartografia/>). Figure 5 (right side) shows the content of this shape using QGIS. These spatial data are sufficient to feed the algorithm *LocatingOfGAPs*.

### The descriptive data

The situation is much more complex with regard to the descriptive data necessary to feed the algorithm *SizingOfGAPs*. The data we are talking about concern the number of people living inside the dwellings and their per capita daily

production of SW of different types. Having reliable data at this level of detail is not trivial because, as stated in recent field studies (e.g., Lebersorger & Beigl, 2011), these values are dependent on many variables, including time of the year, weather, household income, size of their homes, type of heating system in the apartments, etc.

Over time volatility of data is another critical issue against the acquisition of reliable data to feed the algorithm *SizingOfGAPs*. In fact, what we are witnessing is that, partly because of the legislative pressures that exist in all European countries, the quotas of separate collection of municipal SW increase from year to year. By contrast, the data available date back to several years ago. For example, the latest study within the Abruzzo region (OBRA, 2011) reports the data from 2009.

Last practical difficulty, but certainly not the least, comes from the fact that there is no unique transformation ratio between the weight of SW (expressed in kg) and its volume, while it is precisely from these data that we need to solve the SWAP properly, given that the capacity of the GBs is expressed in m<sup>3</sup>. Nor are there any studies on the subject (as far as we know) from which to draw them. The relevance of this issue has been stressed recently by Hoornweg & Bhada-Tata (2012), where we read: "Although waste composition is usually provided by weight, waste volumes tend to be more important, especially with regard to accumulation".

All the above mentioned issues have a direct impact on the outcome of the sizing stage. Therefore, it is correct to say that the goodness of the estimates provided by the method proposed in Section 3 (as well as any other similar method) largely depends on the accuracy of the input data.

In the present pilot study, given the impossibility of making use of updated data on a local basis, we adopted "synthetic" data (Table 4). The 2nd column sets the number of residents served by a specific GB before it becomes full at 85%, according to the weekly periodicity of collection of the SW by the municipal workers. So, for instance, from Table 4 we learn that a GB of Glass type can serve at the most 120 people within seven days.

The number of people living inside the dwellings was acquired through a door-to-door survey.

Category of household SW	Number of residents served by one GB
Organic	80
Plastic	130
Paper/cardboard	100
Glass	120
Unsorted	210

Table 4. The descriptive data used to run the algorithm *SizingOfGAPs*.

## 6. Results and Discussion

### Locating of the GAPs

#### First campaign of experiments

As first set of experiments, the *LocatingOfGAPs* algorithm was run varying the value of the *Distance* parameter as follows: 50, 100, 150, 200, 250, 300, 500 (meters). The findings in (Parrot et al., 2009) advise against going further. The seven experiments were repeated three times changing the order in which the roads in the set  $\mathcal{R}$  were visited. Table 5 collects the results of the campaign of experiments.

<i>Distance</i> (m)	Number of GAPs		
	Order no.1 of visit of the roads	Order no.2 of visit of the roads	Order no.3 of visit of the roads
50	41	41	41
100	27	27	27
150	22	20	21
200	16	17	18
250	13	14	13
300	9	10	9
500	5	6	5

Table 5. The results of the first campaign of experiments.

As it was predictable, the number of GAPs decreases as the value of *Distance* increases. But Table 5 also shows that the number of GAPs is affected by the order in which the first algorithm visits the public roads. This dependence is deepened below.

### Second campaign of experiments

The second campaign of experiments consisted of running *LocatingOfGAPs* for the same seven values of the parameter *Distance* as in the first campaign of experiments, but in two extreme situations: for descending (ascending) values of the length of the roads (Table 6). In other words, in the first seven runs, the algorithm locates the GAPs first on the public road 1493m long, then on that 1046m long, and so on. While in the next seven runs it locates the GAPs first on the public road 80m long, then on that 85m long, and so on.

#	Road id	Length (m)
1	15	1493
2	17	1046
3	4	632
4	5	400
5	9	359
6	14	270
7	1	242
8	3	217
9	11	206
10	6	188
11	2	187
12	7	163
13	13	146
14	10	114
15	8	111
16	16	85
17	12	80

Table 6. The 17 public roads in Cansatessa, listed for descending value of their length.

Table 6 was built by querying the SDB by means of the following spatial query:

```
SELECT id, round(ST_Length(ST_LineMerge
(the_geom))::numeric) AS Length
FROM road
ORDER BY ST_Length(ST_LineMerge(the_geom))
DESC
```

Table 7 collects the results of the second campaign of experiments.

<i>Distance</i> (m)	Roads visited in descending order	Roads visited in ascending order
50	41	41
100	25	27
150	18	23
200	12	19
250	8	15
300	7	10
500	4	6

Table 7. The results of the second campaign of experiments.

Figure 7 shows the geographic position of the GAPS for *Distance* = 250 m and *Distance* = 300 m when the roads are visited in descending order of length.

Table 7 and Figure 7 make evident that the best strategy of crossing the public roads (by algorithm *LocatingOfGAPs*) is for descending values of their length. In fact, for any value of *Distance*, such an option gives rise to the lowest number of GAPS, moreover, the algorithm locates the GAPS first on the streets of greater extension that, likely, are also those that offer the best road conditions. This latter aspect is fundamental for the operations of garbage collection by means of the municipal trucks.

A confirmation of the latter statement is found in Figure 8, from which we can see that in case the roads are visited in increasing order of length, and set *Distance* = 250 m, the *LocatingOfGAPs* algorithm locates several GAPS in roads very short (i.e., 16, 7, 8, 13, 2), in contrast to what is observed in Figure 7 for the corresponding case.

Table 8, built by querying the SDB with the following SQL query:

```
SELECT g.id AS GAP_id, g.road_id AS Road
_id, round(ST_Length(ST_LineMerge
(r.the_geom))::numeric) AS Road
_Length
FROM GAP AS g, road AS r
WHERE g.road_id = r.id;
```

shows that the situation *Distance* = 300 m is the most favorable from this point of view. In fact, it happens that five out of the seven GAPS (Table 7) are located on the three longer public

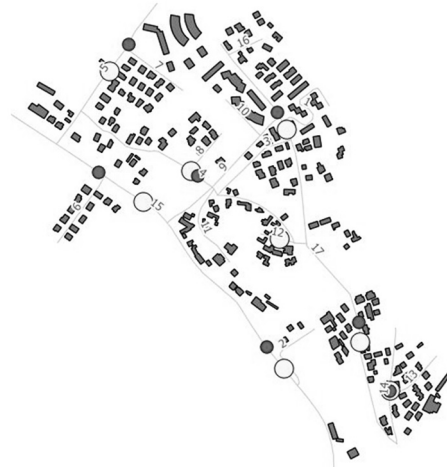


Figure 7. The (8) big and (7) small circles, respectively, denote the GAPS for *Distance* = 250 m and *Distance* = 300 m. The numbers are the identifiers of the roads. The map is made with QGIS.

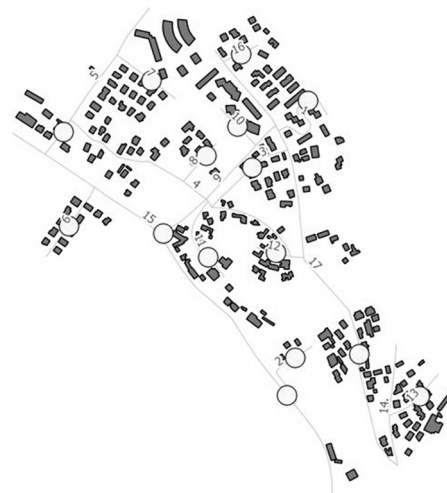


Figure 8. The geographical position of the 15 GAPS for *Distance* = 250 m, when the roads are visited in ascending order of length.

GAP_id	Road_id	Road_Length
1	15	1493
2	15	1493
3	17	1046
4	17	1046
5	4	632
6	5	400
7	14	270

Table 8. Road's id and length where the GAPS are located when *Distance* = 300 m and the roads are visited in descending order of length.

roads in the Cansatessa district. The positioning of the GAPs obtained when *Distance* = 250 m is less satisfactory (Figure 7).

## Sizing of the GAPs

### Third campaign of experiments

It was about the execution of the *SizingOfGAPs* algorithm for the same seven values of the *Distance* parameter. Then, we extracted the results (Table 9), collected in the SDB, using the following SQL query:

```
SELECT SUM (organic) AS Organic,
       SUM (plastic) AS Plastic,
       SUM (paper) AS Paper,
       SUM (glass) AS Glass,
       SUM (unsorted) AS Unsorted,
       SUM (glass) + SUM (plastic) +
       SUM (organic) + SUM (paper) +
       SUM (unsorted) AS "Total bins"
FROM   GAP
```

The 9th column shows that the average number of GBs per GAP increases (from 5.2 GBs to 18.8) as the number of GAPs decreases. The values in the column “Total bins” show, however, that the total number of GBs decreases as the GAPs decrease. This result, apparently surprising, can be interpreted by remembering that every GAP consists of at least 5 GBs, one for each category of SW. Since *Distance* = 50 m gives rise to 41 GAPs, it follows that the minimum number of GBs is (equal to) 205 (very close to the value 213); while *Distance* = 500 m gives rise to 4 GAPs, which corresponds to a minimum number of 20 GBs (significantly below 75).

The 10th column shows the average value of the area occupied by a GAP, assuming that the area of a single GB is equal to 1.5 m<sup>2</sup> (this value is in line with the size of the GBs available from the network. An example: Pack Services Srl, <http://www.packservices.it>).

Lastly, the column “Cost” gives an estimate of the initial investment to be supported. For simplicity, it is assumed that the GBs of different types have the same cost (115€, source: <http://www.alibaba.com>). It does not escape the huge difference that exists between the extreme cases (*Distance* = 50 m and *Distance* = 500 m) due to the 3 to 1 ratio on the total number of GBs. This gap, kept down for the small district of Cansatessa (226 houses and 1,464 residents), becomes relevant if the urban dimension to be served is larger. For instance, in the case of a district hundred times bigger, the initial investment for the two extreme cases is of the order, respectively, of 2.5M€ and 8.6K€.

The general finding that can be extracted from the experiments (Table 9) is that the value of the *Distance* parameter should fall between 250 m and 300 m. There are two major reasons supporting this choice:

- the resulting number of GAPs and GBs is limited. This implies that the overall waste collection time by the municipal workers is significantly reduced;
- the total number of GBs to be bought is significantly lower than that in the extreme case (*Distance* = 50m), which implies a considerable economic saving.

From Table 3 and Table 9, we see that the total number of GAPs in Cansatessa is compara-

<i>Distance</i> (m)	GAPs	Organic	Plastic	Paper	Glass	Unsorted	Total bins	GBs/GAPs	Average area of the GAP (m <sup>2</sup> )	Cost (€)
50	41	49	41	41	41	41	213	5.2	7.8	24,495
100	25	35	26	25	25	26	137	5.5	8.2	15,755
150	18	33	20	19	19	20	111	6.2	9.2	12,765
200	12	31	18	15	15	18	97	8	12	11,155
250	8	28	17	11	13	17	86	10.8	16.1	9,890
300	7	29	15	12	12	15	83	11.9	17.8	9,545
500	4	27	14	10	10	14	75	18.8	28.1	8,625

Table 9. The results of the third campaign of experiments.

ble with the outcome produced by our method when  $Distance = 300$  m (6 vs. 7), but the total number of GBs is definitely insufficient (30 vs. 83). This big mismatch makes evident that the method of allocation adopted nowadays by the municipalities is unsatisfactory. The inevitable consequence is that very often the GBs are full, so it is common to run into scenes like that in Figure 9.



Figure 9. Litter exceeding the storage capacity of the GBs at a GAP.

### 7. A Nice Feature of the Algorithm *LocatingOfGAPs*: the Flexibility

At this point we have all the elements to focus on an interesting behavioral trait of the first algorithm. Let *gap* be a GAP whose position on the territory has been identified by *LocatingOfGAPs* moving along the public road  $r$ . When the algorithm proceeds to explore the roads that are located in the neighborhood of *gap* (let  $r^*$  be one of them), two complementary situations can arise:  $r^*$  ends before a movement along  $r^*$ , starting from *gap*, equal to  $Distance$  has been accomplished (for brevity we will use the notation:  $length(gap_r^*) \leq Distance$ ), conversely  $length(gap_r^*) > Distance$ . In the first case, *LocatingOfGAPs* assigns the houses in the residual stretch of  $r^*$  (if any) to *gap*; while it manages the second case with a certain degree of flexibility, as explained below by referring to Figure 10.

In Figure 10, the inner area denotes the portion of the urban territory which is far from *gap* at most  $Distance$  (moving along the public roads of the district), while the crown adds to the internal area a stretch of the public roads equal to

$\delta$ , an arbitrary value much lesser than  $Distance$ . Figure 10 shows, moreover, the three different situations that may arise during the visit of  $r^*$  (below renamed  $r_1^*$ ,  $r_2^*$ , and  $r_3^*$  to avoid confusing the reader). In the figure, the points  $a$ ,  $b$ , and  $c$  are distant exactly  $Distance$  from *gap* by moving along  $r_1^*$ ,  $r_2^*$  and  $r_3^*$ .

The following three cases are possible when  $length(gap_r^*) > Distance$ :

1.  $length(r_1^* + \delta) \leq Distance$ , i.e., starting from *gap*,  $r_1^*$  ends before a movement equal to  $Distance + \delta$  has been accomplished along such a road. All the houses on  $r_1^*$ , between point  $a$  and the end of  $r_1^*$  (two in Figure 10), are assigned to *gap*;
2.  $length(r_2^* + \delta) > Distance$ , but beyond the gray crown there are no other houses to be served, while there are some inside the crown (one in Figure 10). *LocatingOfGAPs* assigns those dwellings to *gap*;
3.  $length(r_3^* + \delta) > Distance$ , but beyond the crown there are other houses. In this case *LocatingOfGAPs* will ignore any dwellings inside the crown (Figure 10 shows one of them) that will be assigned to a GAP to be positioned when the algorithm visits  $r_3^*$ .

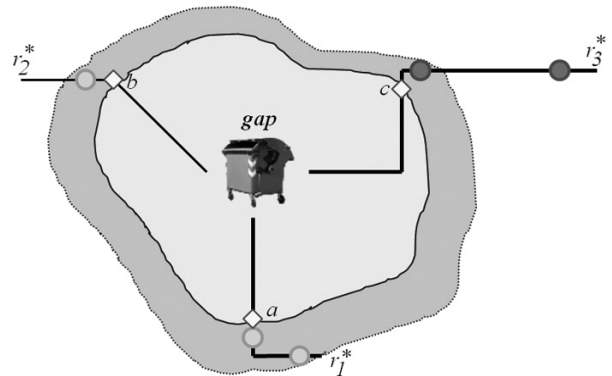


Figure 10. The light gray centroids denote dwellings assigned to *gap*, while the dark gray ones denote dwellings not served by *gap*. The three diamonds denote the points  $a$ ,  $b$ , and  $c$ .

The first half of Table 10 repeats results from Table 9 (obtained by setting  $\delta = 25\% * Distance$ ), while the second half shows the values that we obtained by eliminating from *LocatingOfGAPs* the flexibility pointed out previously; for such a reason called “*LocatingOfGAPs blind*” in the table as well as in the remainder of the paper.

Table 10, besides confirming what was reasonable to expect (i.e., a systematic increase, for the same value of *Distance*, of the total number of GAPS and GBs returned by the algorithm *LocatingOfGAPs blind* with respect to *LocatingOfGAPs*), moreover quantifies that the amount of saving we got in the pilot study is modest. Notice that it is not possible to predict the amount of saving for given values of *Distance* and  $\delta$  since it depends on the geography of the district. Obviously, it is up to the recipients of our method to carry out a campaign of experiments (for several values of *Distance* and  $\delta$ ) in order to identify the best trade-off for the district to be served.

There is a similarity between the “tolerance parameter –  $\delta$ ” in (Ghani et al., 2012) and our  $\delta$ . They set  $\delta = 10\% * Distance$  in the experiments.

Table 11 shows fluctuations in the number of GAPS and GBs (for the Cansatessa district) when  $\delta$  varies from 10% to 50% of *Distance*.

To not excessively distort the behavior of the algorithm *LocatingOfGAPs*, it is important that the value of  $\delta$  is kept much lesser than *Distance*. For this reason, we suggest do not enter the gray area of Table 11. Doing so, the maximum value of  $\delta$  is equal to 20m, 30m, 30m, 40m, 50m, 30m and 50m when *Distance* varies from 50m to 500m, respectively.

The impact of the flexibility of the algorithm *LocatingOfGAPs* in exploring the roads in the neighborhood of a GAP is especially important to pursue management of the final stretch of the public roads (a situation which can be traced back to the case of  $r_1^*$  and  $r_2^*$  in Figure 10) that may be satisfactory from the point of view of the managers of SW collection service. In fact, the shorter the final stretch of the roads, relative to the value of *Distance*, the less they are inclined towards allocating further GAPS.

<i>Distance</i> (m)	<i>LocatingOfGAPs</i> ( $\delta = 25% * Distance$ )				<i>LocatingOfGAPs blind</i>			
	GAPs	GBs	GBs/GAP	Average area of the GAP (m <sup>2</sup> )	GAPs	GBs	GBs/GAP	Average area of the GAP (m <sup>2</sup> )
50	41	213	5.2	9	43	223	5.2	7.8
100	25	137	5.5	9	28	151	5.4	8.1
150	18	111	6.2	10.5	22	130	5.9	8.8
200	12	97	8	12	15	111	7.4	11.1
250	8	86	10.8	16.5	12	104	8.7	13
300	7	83	11.9	18	8	87	10.9	16.3
500	4	75	18.8	28.5	6	82	13.7	20.5

Table 10. A comparison of the results computed by *LocatingOfGAPs* and *LocatingOfGAPs blind* for the district of Cansatessa.

<i>Distance</i> (m)	$\delta = 10\%$		$\delta = 20\%$		$\delta = 30\%$		$\delta = 40\%$		$\delta = 50\%$	
	GAPs	GBs	GAPs	GBs	GAPs	GBs	GAPs	GBs	GAPs	GBs
50	43	223	43	223	41	213	41	213	40	208
100	27	147	25	137	24	132	24	132	22	128
150	20	121	18	111	18	111	17	107	15	104
200	14	106	13	101	12	99	11	94	11	93
250	9	91	9	91	8	86	8	86	7	83
300	7	83	7	83	7	83	7	82	7	83
500	5	80	4	75	4	75	4	75	4	74

Table 11. Fluctuations in the number of GAPS and GBs.

## Concluding Remarks

Table 9 tells us that as *Distance* increases the number of GAPS decreases (as well as the number of the GBs), so it is obvious that the number of GAPS for *Distance* +  $\delta$  (for any  $\delta > 0$ ) must be less than that got for *Distance*. The values in Table 10 confirm this statement. However, it is important to emphasize that the flexibility of the first algorithm cannot be replaced by *LocatingOfGAPs blind* through the increase of the parameter *Distance* to the value *Distance* +  $\delta$ . Indeed, there is no increase of  $\delta$  able to distinguish the second case in Figure 10 from the third one.

Table 12 compares the results of *LocatingOfGAPs* with those of *LocatingOfGAPs blind*, the latter run by setting *Distance* = *Distance* of *LocatingOfGAPs* +  $\delta$  (for example, the values returned by *LocatingOfGAPs* per *Distance* = 100m, are compared with those returned by *LocatingOfGAPs blind* run by setting *Distance* = 125m).

<i>LocatingOfGAPs</i> ( $\delta=25\%$ )			<i>LocatingOfGAPs blind</i>		
<i>Distance</i> (m)	GAPs	GBs	<i>Distance</i> (m)	GAPs	GBs
50	41	213	62.5	37	194
100	25	137	125	24	135
150	18	111	187.5	15	109
200	12	97	250	12	104
250	8	86	312.5	7	81
300	7	83	375	7	81
500	4	75	625	4	73

Table 12. Comparison between *LocatingOfGAPs* and *LocatingOfGAPs blind*.

As we can see, the total number of GAPS calculated by *LocatingOfGAPs blind* is less than or equal to the corresponding value calculated by *LocatingOfGAPs*. We can also note that the deviations decrease as *Distance* increases, to disappear when *Distance*  $\geq$  300 m. About the GBs, we can see that their total number calculated by *LocatingOfGAPs blind* is always less than the corresponding value calculated by *LocatingOfGAPs*. Also in this case the deviations, large for low values of *Distance*, rapidly decline as *Distance* increases, and almost disappear when *Distance*  $\geq$  300 m.

In summary, it can be said that the reason for the deviations in Table 12 is that while *LocatingOfGAPs* tries an action of adjustment of type "local" (according to the schema of Figure 10), that does not always produce savings in the number of GAPS (and, hence, of GBs), *LocatingOfGAPs blind*, vice versa, proceeds to the positioning of the GAPS by setting a constraint about the maximum distance GAP-house less stringent and that produces a saving that is more evident the more we operate at low values of *Distance*.

## 8. Analysis on Demand

As already remarked (Section 4), the strength of the adopted software architecture resides in the technology of the SDBMSs which offers the expressiveness of the SQL language in querying the SDB. The seven queries (consistent with the PostgreSQL/PostGIS syntax) that follow give a concrete proof of the previous statement. Evidently, other requirements of analysis that might occur to those who have the responsibility for the management of the SW can be satisfied in the same way.

**Q1** Retrieve the total number of the citizens served by each allocated GAP when *Distance* = 300 m. Order the returned tuples in ascending order of the GAP's identifier.

```
SELECT    gap_id AS "GAP Id",
          SUM(density) AS
          "citizens served"
FROM      house
GROUP BY gap_id
ORDER BY gap_id ASC
```

The output is shown in Table 13.

GAP Id	citizens served
1	88
2	205
3	232
4	446
5	144
6	212
7	137

Table 13. The result of Q1.

**Q2** Retrieve the total number of the houses served by each allocated GAP when *Distance* = 300 m. Order the returned tuples in ascending order of the GAP's identifier.

```
SELECT gap_id AS "GAP Id", COUNT (*)
      AS "houses served"
FROM   house
GROUP BY gap_id
ORDER BY gap_id ASC
```

The output is shown in Table 14.

GAP Id	houses served
1	15
2	37
3	41
4	62
5	24
6	23
7	24

Table 14. The result of Q2.

**Q3** Retrieve the identifier of the houses served by each allocated GAP. Order the tuples in ascending order of GAP's identifier.

```
SELECT gap_id AS "GAP Id", id AS
      "house Id"
FROM   house
GROUP BY gap_id, id
ORDER BY gap_id ASC
```

Output not shown because composed of too many tuples (226).

**Q4** Retrieve, for each GAP, the value of the average of the distances of the houses served by it. (The SQL formulation refers to *Distance* = 300 m.)

```
SELECT g.id AS "GAP Id",
      round(AVG(distance(h.id,
      g.id, 400, true))::numeric)
      AS Distance
FROM   gap AS g, house AS h
WHERE  St_Distance(g.the_geom,
      h.the_geom_h)<= 300 AND
```

```
distance(h.id, g.id, 400, true)
<= 300 AND h.gap_id = g.id
GROUP BY g.id
```

The output is shown in Table 15.

GAP Id	AVG distance house – GAP
1	198
2	162
3	85
4	139
5	114
6	150
7	75

Table 15. The result of Q4.

In **Q4**, *St\_Distance()* is a PostGIS spatial function, while *distance()* is one of our UDFs. The first function computes the Euclidean distance between two points (in our case, the position occupied by the GAP and the projection of the centroid of the house on the reference road), while the second function computes the distance between the same two points but moving along the public roads. The condition *ST\_Distance(...)* <= 300 speeds up the computation of **Q4**, in fact it asks to ignore all the dwellings that are located more than 300 m as the crow flies, because they will certainly be at a distance not less than 300 m when moving along the roads.

**Q5** Retrieve the value of the overall average of the distances dwelling-(reference)GAP, when *Distance* = 300 m.

```
CREATE VIEW One AS (
  SELECT (AVG(distance(h.id, g.id,
    400, true))) AS distances
  FROM   gap AS g, house AS h
  WHERE  St_Distance(g.the_geom,
    h.the_geom_h)<= 300 AND
    distance(h.id, g.id,
    400, true)<= 300 AND
    h.gap_id = g.id
  GROUP BY g.id )
SELECT round((SUM(distances)/COUNT(*))
  ::numeric) AS "average distance"
FROM one
```



The output is shown in Table 16.

<b>average distance</b>
132

Table 16. The result of Q5.

The necessity to introduce the view one comes from the impossibility of nesting built-in functions (in the example: SUM and AVG) in the PostgreSQL version we used.

All the previous queries return information in the standard relational format. However, having implemented a SDB, it makes trivial to combine this method of displaying of the results with the construction of maps. Below, we propose two examples, but many others are possible.

**Q6** Retrieve the location of the dwellings served by GAP 5 and *Distance* = 300 m.

```
CREATE VIEW Two AS (
    SELECT  g.id AS "GAP Id",
           h.id AS house,
           h.the_geom AS house_polygon,
           h.the_geom_c AS
           house_centroid,
           h.the_geom_h AS
           house_projection
    FROM    gap AS g, house AS h
    WHERE   St_distance(g.the_geom,
                       h.the_geom_h) <= 300 AND
           distance(h.id, g.id, 400
                   ::double precision, true)
           <= 300 AND h.gap_id = g.id
    GROUP BY g.id, h.id, h.the_geom,
             h.the_geom_c, h.the_geom_h
    ORDER BY g.id );
SELECT  "GAP Id", house_polygon
FROM    Two
WHERE   "GAP Id" = 5;
```

The output returned by Q6 is tabular. Figure 11 shows its visualization through QGIS.

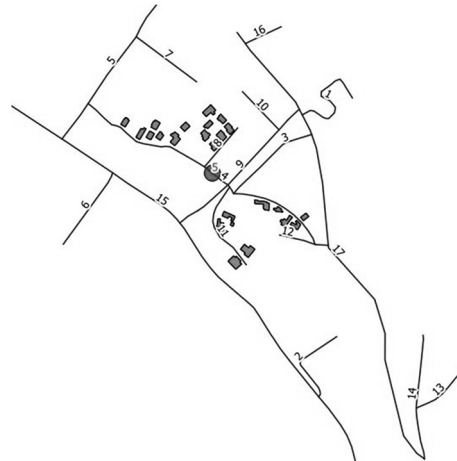


Figure 11. A GIS map built starting from the output of Q6. The figure shows the twenty-four dwellings served by GAP 5 and their reference roads (namely: 4, 8 and 11).

**Q7** Retrieve the ID and position of the GAPs located along the road “VIA LUDWIG VAN BEETHOVEN” (id = 4) and *Distance* = 300 m.

```
SELECT  r.the_geom AS road, g.id AS
        "GAP Id", g.the_geom AS Position
FROM    road AS r, gap AS g
WHERE   r.id=g.road_id AND r.name='VIA
        LUDWIG VAN BEETHOVEN';
```

The map in Figure 12 shows that only one GAP (the small circle) is located along the entered road (id = 4).

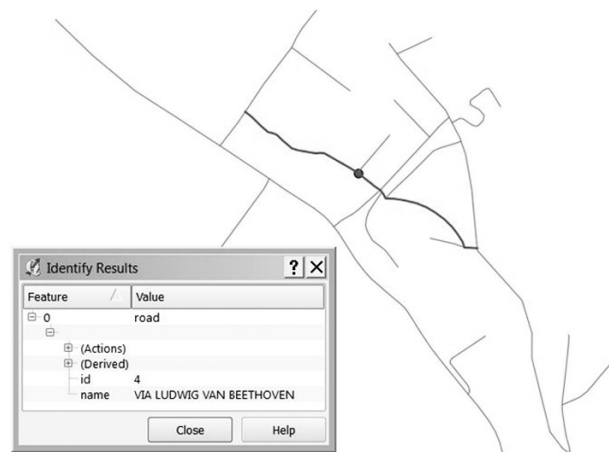


Figure 12. A QGIS map built starting from the output of Q7.

In summary, Q2 and Q3 provide a twofold “numerical view” about how various GAPs serve

the dwellings of the Cansatessa's district. **Q2** provides a global information, while **Q3** provides details about the coupling housing-GAP of reference.

**Q4** returns, for each GAP, the value of the average distance of the houses it serves, while **Q5** shows the value of the overall average of the distances between each dwelling and its reference GAP. Both those values are of interest to the managers of the service because they provide them with "global" information that enrich the starting data, i.e., the value of the *Distance* parameter. The value returned by **Q5** (132m) gives the chance to recall the experiments made by Ghiani et al. (2012). They restricted their attention to the values 140 and 150 meters as the maximum distance house-GAP of reference, with the following explanation: those values "are typical distances that can be easily covered in urban areas". The value 132m reinforces our belief that the adoption of the constraint  $Distance = 300$  m might be appropriate in the reality. The added value of the last two queries, compared to the others, is that they also return geometric information, necessary to produce geographic maps invaluable for decision makers.

## 9. Conclusions and Further Work

Complex decision problems are frequently encountered in urban planning, typically involving the consideration of a large number of conflicting objectives. The method proposed in this paper is able to produce a lot of information to support the persons responsible for the management of the municipal SW in setting, in full autonomy, and in the "real world", a satisfactory trade-off between the maximum distance dwelling-GAP of reference and the number/sizing of the GAPs.

The proposed method was implemented with open source software and then used to carry out a pilot study. The study confirmed what was in a sense obvious to expect, namely that as the distance increases, the number of GAPs decreases. Having few areas of accumulation definitely accelerates the waste collection by the municipal workers, while, on the citizens' side, this may cause some drawbacks. First of all, such a solution forces many residents to use the car to go

to drop the SW into the GBs, which may not be the case if the reference GAP is closer (e.g., within 100m). It is also plausible to foresee that such a solution may have impact on the aesthetics of the area, on the smells, as well as on the commercial value of the surrounding dwellings. Another aspect not to be underestimated is the fact that it may not be trivial to find, within modern urban areas, sites adequate to accommodate large GAPs. Last, but not least, decision makers may be constrained in the choice of a solution by the budget available. Our study pointed out clearly that the initial investment to buy the GBs decreases as the value of *Distance* increases.

In closing, it is worthwhile to repeat that the estimate of the number of GBs within each GAP is directly related to the availability of certain data about the number of people living inside the dwellings and the daily production of waste by each dwelling. It serves, also, to know what is the conversion factor of the weight of the SW (expressed in kg) in space ( $m^3$ ), because this latter value has to be correlated with the capacity of the bins (expressed in  $m^3$ ). Obviously, the responsibility to get hold of this input data is a burden to the society, either private or public, responsible of the management of the SW.

## Further Work

The solution described in this article can be benefited by the end users with a training on the job of a few hours. In fact, to make the elaborations about the location and the sizing of the GAPs for varying values of the *Distance* parameter, it is sufficient to invoke, from inside the PostgreSQL query window, the command:

```
SELECT solveSWAP(distance);
```

where `solveSWAP()` is the UDF collecting the PL/pgSQL code that implements our two algorithms. Similarly, the processing of the queries listed previously can be invoked by copying their SQL code in the same window.

To entice the persons responsible for the management of municipal SW to use our method, an additional engineering effort remains to be accomplished in order to develop a webGIS interface on top of the adopted software architecture. Through such an interface the decision

makers can access the services available to them in conditions of total independence from the architectural/technological underlying elements.

## References

- [1] M. F. BADRAN, S. M. EL-HAGGAR, Optimization of municipal solid waste management in Port Said – Egypt. *Waste Management* **26**, 534–545, 2006.
- [2] J. BAUTISTA, J. PEREIRA, Modeling the problem of locating collection areas for urban waste management, an application to the metropolitan area of Barcelona. *Omega. The International Journal of Management Science* **34**, 617–629, 2006.
- [3] A. M. DAMGHANI, G. SAVARYPOUR, E. ZAND, R. DEIHIMFARD, Municipal solid waste management in Tehran: Current practices, opportunities and challenges. *Waste Management* **28**, 929–934, 2008.
- [4] P. DI FELICE, Integration of spatial and descriptive information to solve the urban waste accumulation problem. *3rd Inter. Conf. on Integrated Information (IC-ININFO)*, Prague, Czech Republic, Sept. 5–9, 2013. Elsevier, Procedia – Social and Behavioral Sciences pp. 182–188, 2014. DOI information: 10.1016/j.sbspro.2014.07.150.
- [5] EEA, Managing municipal solid waste. A review of achievements in 32 European countries. *Report by the European Environment Agency*. <http://www.eea.europa.eu/publications/managing-municipal-solid-waste> (Retrieved on June, 2013).
- [6] R. FELIX, J. GARCIA-VEGA, Quality of Life in Mexico: A Formative Measurement Approach. *Applied Research Quality Life*, **7**:223–238, 2012. DOI 10.1007/s11482-011-9164-4.
- [7] G. GHIANI, D. LAGANÀ, E. MANNI, C. TRIKI, Capacitated location of collection sites in an urban waste management system. *Waste Management*, **32**, 1291–1296, 2012.
- [8] D. HOORNWEG, P. BHADA-TATA, What a waste: A Global Review of Solid Waste Management. Urban Development & Local Government Unit, World Bank, Washington, DC 20433 USA, 2012. [www.worldbank.org/urban](http://www.worldbank.org/urban)
- [9] S. LEBERSORGER, P. BEIGL, Municipal solid waste generation in municipalities: Quantifying impacts of household structure, commercial waste and domestic fuel. *Waste Management*, **31**, 1907–1915, 2011.
- [10] M. MIYAZAKI, T. IMATOH, H. UNE, The treatment of infectious waste arising from home health and medical care services: Present situation in Japan. *Waste Management*, **27**, 130–134, 2007.
- [11] OBRA, Official Bulletin of Regione Abruzzo – Speciale Ambiente n.25, 15 April 2011 – [http://bura.regione.abruzzo.it/2011/Speciale\\_25\\_15\\_04.pdf](http://bura.regione.abruzzo.it/2011/Speciale_25_15_04.pdf) (Retrieved on June 2013).
- [12] L. PARROT, J. SOTAMENOU, B. K. DIA, Municipal solid waste management in Africa: Strategies and livelihoods in Yaoundé, Cameroon. *Waste Management*, **29**, 986–995, 2009.
- [13] C. S. REVELLE, H. A. EISELT, Location analysis: a synthesis and survey. *European Journal of Operational Research*, **165**, 1–19, 2005.
- [14] G. TCHOBANOGLIOUS, H. THEISEN, S. VIGIL, *Integrated Solid Waste Management*. McGraw-Hill, New York, 2005.
- [15] L. TRALHÃO, J. COUTINHO-RODRIGUES, L. ALÇADA-ALMEIDA, A multiobjective modeling approach to locate multi-compartment containers for urban-sorted waste. *Waste Management*, **30**, 2418–2429, 2010.
- [16] UN-HABITAT, Solid waste management in the world's cities. *United Nations Human Settlements Programme*, 2010.
- [17] US EPA. (2010). Municipal Solid Waste Generation, Recycling, and Disposal in the United States. United States Environmental Protection Agency. [http://www.epa.gov/osw/nonhaz/municipal/pubs/msw\\_2010\\_factsheet.pdf](http://www.epa.gov/osw/nonhaz/municipal/pubs/msw_2010_factsheet.pdf). EPA-530-F-11-005, November 2011. (Retrieved on June 2013).
- [18] H. ZIA, V. DEVADAS, Urban solid waste management in Kanpur: Opportunities and perspectives. *Habitat International*, **32**, 58–73, 2008.

Received: May, 2014

Revised: October, 2014

Accepted: December, 2014

Contact address:

Paolino Di Felice  
Department of Industrial and Information  
Engineering & Economics  
University of L'Aquila  
L'Aquila  
Italy

e-mail: [paolino.difelice@ing.univaq.it](mailto:paolino.difelice@ing.univaq.it)

---

PAOLINO DI FELICE is Professor of Computer Science at the Department of Industrial and Information Engineering & Economics of the University of L'Aquila. He has authored or co-authored about 100 articles in international journals, books, and conference proceedings in the areas of programming methodologies, relational and spatial databases. He has also carried out a consistent activity of technological transfer in collaboration with several IT firms. His research has been funded by national and international institutions and carried out in collaboration with researchers of several countries (Italy, Holland, Germany, Canada, and the USA). He has served within national and international committees. In the last years, he is permanently member of the program committee of the International Conference on Integrated Information (IC-ININFO).

---