

# THE SEASIDE CALLS!



SPPAM

919.4504

Vic/Sca

1937

33217012797701



Tea-tree Foreshore, Rosebud

# Index to Resorts . . .

	Page		Page
Airey's Inlet	11	Mentone	4
Altona	4	Moe	15
Anglesea	11	Mordialloc	4, 15
Apollo Bay	11	Mornington	4, 15
Aspendale	4	Mornington Peninsula	4
Ballarat	15	Moyne River	13
Barwon Heads	11, 12	Mt. Eliza	4
Beaumaris	4	Mt. Martha	4, 5
Bellarine Peninsula	4	Ocean Grove...	11
Bendigo	15	Otway Ranges	10
Black Rock	4	Peterborough	11, 12
Brighton	4	Phillip Island	6, 7
Brodribb River	7	Point Lonsdale	4
Cape Bridgewater	13	Portarlington	4
Carrum	4	Port Campbell	11, 12
Chelsea	4	Port Fairy	13
Clifton Springs	4	Portland	13
Cowes	7, 15	Port Melbourne	15
Daylesford	15	Portsea	4
Dromana	3, 4, 5	Queenscliff	4, 15
Eastern View	11	Rosebud	4
Edithvale	4	Rye	4
Flinders	4, 6	Sandringham	4, 15
Frankston	3, 4, 15	San Remo	7
Geelong	10, 15	Seaford	4
Gembrook	15	Snowy River	7
Gippsland Lakes	6, 7	Sorrento	4
Great Ocean Road	10, 11	St. Kilda	4, 15
Griffith Island	13	Stony Point	15
Healesville	15	Summerland	7
Hurstbridge	15	Torquay	11, 12
Kalimna	6	Tower Hill	13
Lady Bay	11	Warburton	15
Lady Julia Percy Island	13	Warrnambool	10, 11
Lake Corringale	7	Whittlesea	15
Lang Lang	15	Williamstown	4, 15
Lorne	8, 11	Wilson's Promontory	7
Mallacoota	7	Wye River	11
Marlo	7		



## Along Victoria's Golden Beaches...

**N**UMEROUS charming holiday resorts cater for every mood. Wide stretches of firm sand alternate with bold, rocky headlands which in places rise to a height of 700 feet ; at other coastal resorts there is the ideal combination of beach and bush ; or again the glamorous beauty of island-dotted lakes.

The pleasures of bathing in sunlit waters, or of surfing in the foaming breakers, is varied by a wide range of other outdoor recreations—boating, fishing, shooting, golf, riding and tennis among their number. The many scenic attractions afford full scope for interesting walks.

All the resorts are linked with Melbourne direct by rail or road or by combined rail-and-road or rail-and-steamer services.

On opposite page—(Top) Frankston.  
(Below) Dromana from  
Arthur's Seat.



**E**XCELLENT facilities for picnicking, bathing and fishing are available on the popular foreshore of Port Phillip Bay. St. Kilda, Brighton, Sandringham, Black Rock, Beaumaris, Mentone, Mordialloc, Aspendale, Edithvale, Chelsea, Seaford, Frankston, Williamstown and Altona have each a distinctive appeal. Each resort has wide beaches sloping gently into the water and offering opportunities for safe bathing on golden summer days. Fine golf courses are available at Altona, Carrum and Frankston. The sheltering tea-tree fringing the Bay provides innumerable shady spots for picnic lunches. At various places high cliffs afford sweeping panoramic views across the Bay. At the more distant places the fragrance of the bush combines with the ozone-laden air to provide an invigorating tonic atmosphere.

**F**URTHER out from Melbourne are other holiday resorts—Clifton Springs, Portarlington, Queenscliff, Mt. Eliza, Mornington, Mt. Martha, Dromana, Rosebud, Rye, Flinders, Sorrento and Portsea—offering again clean, wide beaches and an equable climate. Golfers are specially catered for at Mt. Eliza, Mt. Martha, Sorrento, Portsea, Clifton Springs, Queenscliff and Flinders, each of which boasts an excellent course. At Point Lonsdale, Sorrento and Portsea there is the additional attraction of surfing in the long rollers on the ocean beaches. At Queenscliff and Point Lonsdale there is the always interesting spectacle—especially at night—of overseas and interstate liners entering or leaving the Bay. The lighthouse at Point Lonsdale may be inspected by arrangement with the Officer-in-Charge. Fine roads traversing the Mornington and Bellarine Peninsulas provide the venue for delightful outings.

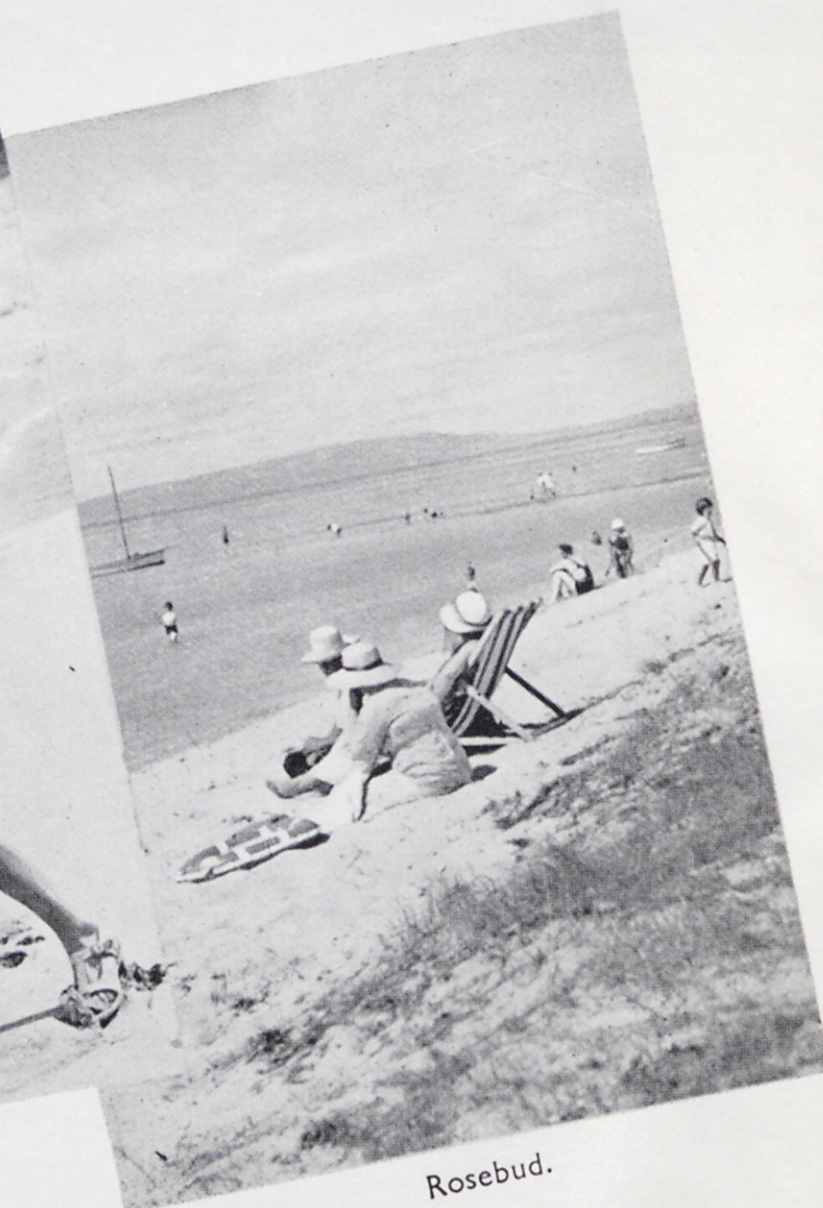
## Around Port Phillip Bay



Back Beach, Sorrento.



Beach Girl, Portsea.



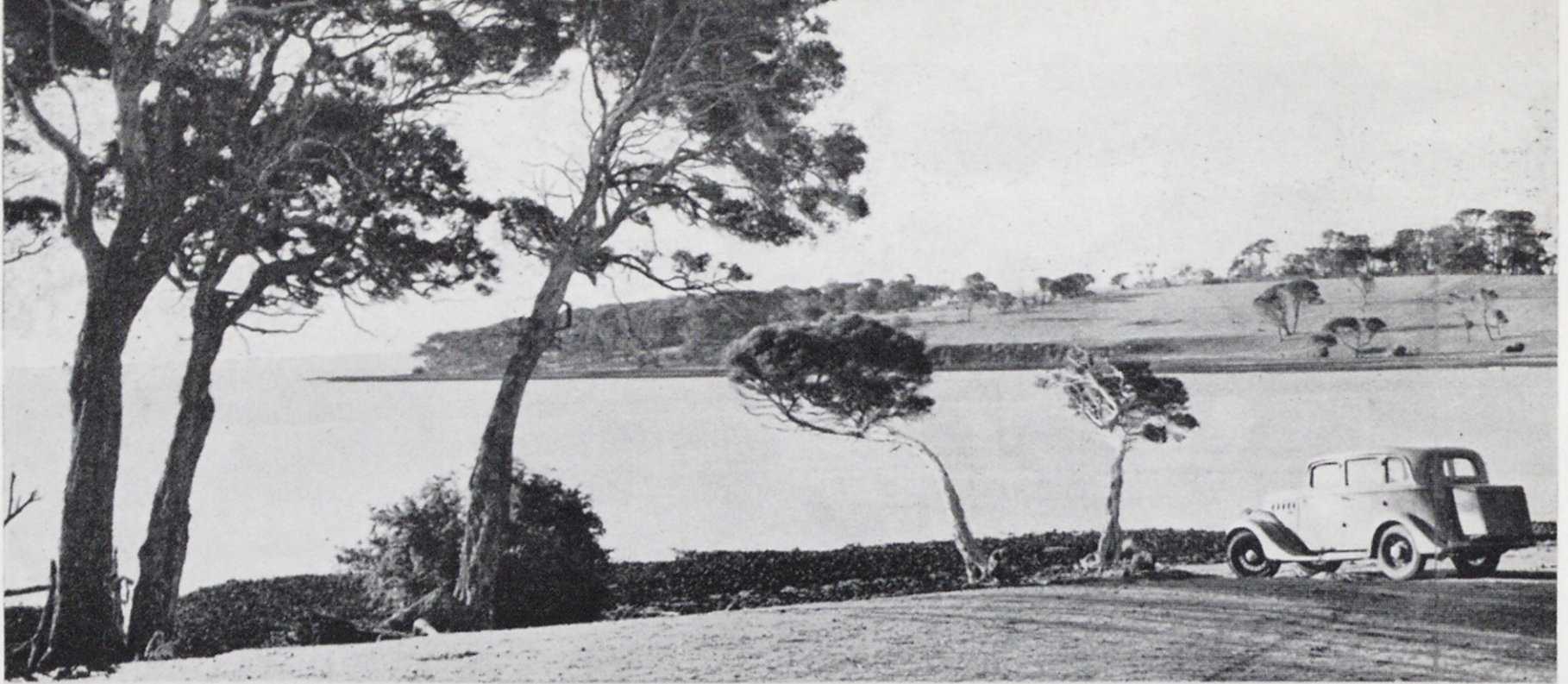
Rosebud.



(Above) Looking towards Dromana.  
(Right) Beach near Mt. Martha.



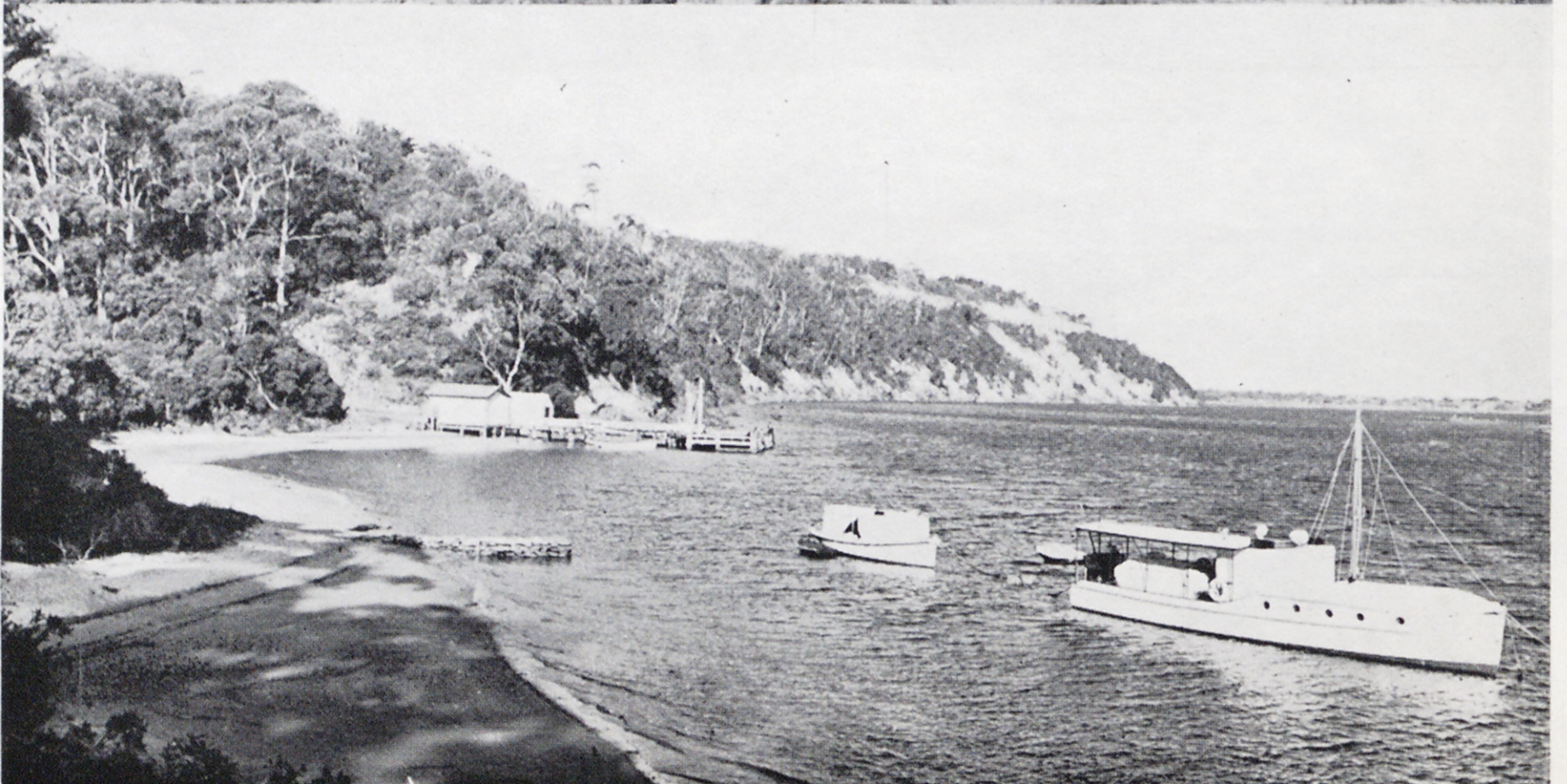
Churchill  
Island from  
Phillip Island.



Flinders.



Kalimna,  
Lakes Entrance.





# The Eastern Coastline

**P**HILLIP Island, with its koala, seal, penguin and mutton bird colonies, is a perennial attraction to tourists. Cowes, the tourist capital of the island, has fine bathing beaches, whilst at Summerland there is excellent surfing. San Remo, on the mainland opposite the Island, offers bay and ocean beaches and affords good fishing and shooting. The Gippsland Lakes—a 50-mile chain of waterways unparalleled in the Commonwealth—are extremely beautiful. The tourist who explores them fully by boat sees enchanting pictures at every turn.

**M**ARLO occupies a prominent position overlooking the Southern Ocean, Lake Corringale and the beautiful Snowy River. Only a mile and a half from the township the Brodribb River junctions with the Snowy and in these waters, as well as in the sea, there are splendid opportunities for fishing. The island-dotted lakes of Mallacoota provide a unique setting for a perfect holiday. The almost semi-tropical climate favours the growth of bananas, lemons and oranges on the well-timbered shores.

Mouth of Darby River, Wilson's Promontory





LORNE





Warrnambool.

## The Western Coastline

**C**ONNECTED with Geelong by the Great Ocean Road, the numerous resorts scattered along the western coast present inspiring snapshots of charming little bays set amid rugged cliffs, and wide curving sands bounded by tree-clad spurs of the Otway Ranges. The Great Ocean Road discloses a series of delightful bush scenes and beautiful seascapes.

**O**CEAN Grove and Barwon Heads, twin settlements on the Barwon River, afford safe river bathing as well as ocean surfing. Torquay, Anglesea, Wye River and Apollo Bay are other widely favoured resorts. Airey's Inlet, Eastern View and Lorne, where blue-gums edge the golden beach, have a wide appeal. Rambles through the bush to shimmering waterfalls and quiet fern gullies add a further note of variety.



Anglesea.

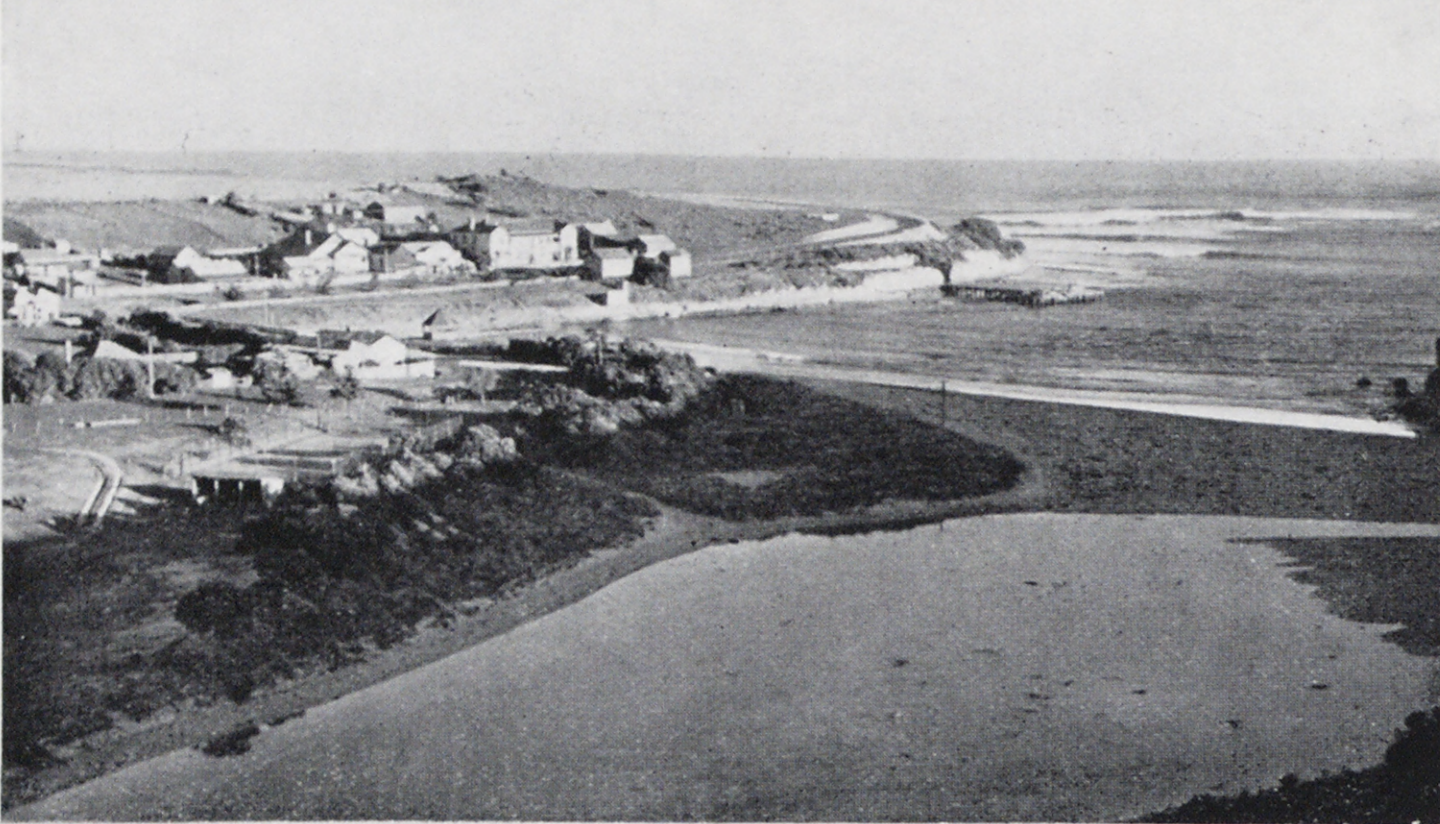


Ocean Grove.



Great Ocean Road.

**A**T Peterborough and Port Campbell there is a long stretch of precipitous cliffs at the base of which the relentless seas beat incessantly. Here and there the cliffs protect small sandy bays where there is good scope for bathing. Warrnambool is an attractive city charmingly situated on an eminence overlooking Lady Bay. Flanked by two rivers and having both sandy beaches and rocky cliffs Warrnambool affords scope for excursions to many points of interest.



(Left) Port Campbell.  
(Below) Torquay.



(Above) Barwon Heads.  
(Right) Peterborough.



**A**S the oldest seaport town in Victoria, Portland is full of historic interest. It was founded as a whaling settlement by the Henty brothers in 1834. The many picturesque and interesting scenic features in the coastal scenery also attract visitors. The town itself is built practically on the beach, and the blue waters of Portland Bay are admirably suited for safe bathing. The towering headland of Cape Bridgewater, 16 miles away, is barely a mile across at its neck and stands 450 feet above the sea. At the Blowholes, near the Cape, the seas spurt columns of water high into the air to the accompaniment of tremendous roars.



Portland.



Port Fairy.

**P**ORT Fairy is another old settlement holding a significant place in Victoria's early history. It has a safe bathing beach, protected by a shark proof reef, and some of the best surfing in Victoria is available on the ocean shore. Delightful excursions may be made to The Craggs, a group of rugged and fantastic cliffs, and to Tower Hill, a huge extinct volcanic crater. Griffith Island, at the mouth of the Moyne River, is a favourite nesting place for mutton birds. About 11 miles out, Lady Julia Percy Island affords a home for numerous seals. Port Fairy is noted for its outdoor sporting facilities, including boating, fishing, golf, tennis, croquet and bowls. There are also fine gardens in the town.



## For All Travel Information

**C**ONSULT the Victorian Government Tourist Bureau, Queen's Walk (near the Town Hall), Melbourne. Telephone, Central 2042. A staff of travel experts is available between 9 a.m. and 6 p.m. on week days, and 9 a.m. and 1 p.m. on Saturdays, to afford tourists advice and help in all matters relating to travel . . .

A cordial invitation to call at the Bureau is extended to all desirous of obtaining information concerning rail, road, sea, or air services ; also regarding hotel and guest-house accommodation at the many charming mountain, river, lake, and seaside resorts throughout Victoria.

Branches of the Victorian Government Tourist Bureau are situated at Spencer Street and Flinders Street railway stations, Melbourne ; 11 Martin Place, Sydney ; 131 King William Street, Adelaide ; 204 Adelaide Street, Brisbane ; and 8th Street, Mildura.





# Bargain Lines

## Family Tickets—

**F**AMILY Excursion Tickets to the seaside are available during the summer season on week days and Sundays, Cup Day excepted. Each ticket covers travel of two adults and four children (under 16), or one adult and five children (under 16).

Illustrative of the cheapness of these tickets, which are available from all suburban stations, are the following rates from Melbourne and any station within a 10-mile radius of the city to Sandringham, 4/8d. first class, 3/3d. second class; Williamstown, 4/8d. first class, 3/3d. second class; Mordialloc 6/5d. first class and 5/1d. second class; Frankston, 7/11d. first class and 6/5d. second class.

On Sundays throughout the year, Family Excursion Tickets from stations within 10 miles of Melbourne to St. Kilda or Port Melbourne are specially reduced to 2/6d. first class, and 2/- second class.

## Saturday and Sunday Seaside Excursions—

Very Cheap Suburban Return Tickets are available to the seaside on Saturdays and Sundays during the summer season.

## For Business Men and Holiday Travellers—

An All-Lines Bargain—The All-Lines Fortnightly Ticket, available on all lines in Victoria for fourteen days, costs £7/10/- first class, or £5/10/- second class.

## For Sunday travellers to the Seaside and the Country—

### DAY RETURN FARES—

				First Class	Second Class
Melbourne-Geelong	...	...	...	7/-	5/-
Melbourne-Queenscliff *	...	...	...	8/6	6/-
Melbourne-Ballarat	...	...	...	8/6	6/-
Melbourne-Bendigo	...	...	...	10/6	7/6
Melbourne-Daylesford	...	...	...	8/6	6/-
Melbourne-Mornington	...	...	...	5/7	4/5
Melbourne-Stony Point-Cowes	...	...	...	9/-	8/-
Melbourne-Healesville	...	...	...	5/7	4/5
Melbourne-Warburton	...	...	...	5/7	4/5
Melbourne-Gembrook	...	...	...	5/1	4/5
Melbourne-Moe	...	...	...	8/6	6/-
Melbourne-Lang Lang	...	...	...	7/-	5/-
Melbourne-Whittlesea	...	...	...	3/2	2/5
Melbourne-Hurstbridge	...	...	...	2/10	2/2

\* Sunday trains run between Melbourne and Queenscliff during portion of the summer only, and at Easter.



# “Save To Travel” . . .


Special “ Save To Travel ” stamps in 1/- and 5/- denominations are on sale at

Railway Stations, Post Offices, Road Services, Shipping and Airways Offices, and the Victorian Government Tourist Bureau and Branches . . . . .

When you have saved sufficient, the stamps will be accepted in payment or part payment for tickets covering travel by . . . . .

## Rail, Road, Sea or Air

For further particulars, consult the Victorian Government Tourist Bureau, Queen’s Walk, Melbourne (Branch Offices, Spencer Street and Flinders Street railway stations) . . . . . Telephone—Central 2042.



*Issued by the Betterment and Publicity Board, Victorian Railways, Melbourne.*



700

MILES

VICTORIA'S

GOLDEN

BEACHES

OF SUMMERTIME

