

2016

## Towards an ecosystem-based approach of Guam's coral reefs: The human dimension

Mariska Weijerman

*NOAA Fisheries, Pacific Islands Fisheries Science Center, 1845 Wasp Blvd Building 176, Mail Rm 2247, Honolulu, HI, mariska.weijerman@noaa.gov*

Cynthia Grace-McCaskey

*University of Hawai'i at Manoa, Joint Institute for Marine and Atmospheric Research, 1000 Pope Road, Marine Science Bldg 312, Honolulu, HI*

Shanna L. Grafeld

*University of Hawai'i at Manoa, Department of Natural Resources and Environmental Management, 1910 East-West Road, Sherman 101, Honolulu, HI*

Dawn M. Kotowicz

*University of Hawai'i at Manoa, Joint Institute for Marine and Atmospheric Research, 1000 Pope Road, Marine Science Bldg 312, Honolulu, HI*

Kirsten L.L. Oleson

*University of Hawai'i at Manoa, Department of Natural Resources and Environmental Management, 1910 East-West Road, Sherman 101, Honolulu, HI*

*See next page for additional authors*

Follow this and additional works at: <http://digitalcommons.unl.edu/usdeptcommercepub>

---

Weijerman, Mariska; Grace-McCaskey, Cynthia; Grafeld, Shanna L.; Kotowicz, Dawn M.; Oleson, Kirsten L.L.; and van Putten, Ingrid E., "Towards an ecosystem-based approach of Guam's coral reefs: The human dimension" (2016). *Publications, Agencies and Staff of the U.S. Department of Commerce*. 546.  
<http://digitalcommons.unl.edu/usdeptcommercepub/546>

This Article is brought to you for free and open access by the U.S. Department of Commerce at DigitalCommons@University of Nebraska - Lincoln. It has been accepted for inclusion in Publications, Agencies and Staff of the U.S. Department of Commerce by an authorized administrator of DigitalCommons@University of Nebraska - Lincoln.

---

**Authors**

Mariska Weijerman, Cynthia Grace-McCaskey, Shanna L. Grafeld, Dawn M. Kotowicz, Kirsten L.L. Oleson, and Ingrid E. van Putten

# Towards an ecosystem-based approach of Guam's coral reefs: The human dimension

Mariska Weijerman<sup>a,b,\*</sup>, Cynthia Grace-McCaskey<sup>c</sup>, Shanna L. Grafeld<sup>d</sup>, Dawn M. Kotowicz<sup>c</sup>, Kirsten L.L. Oleson<sup>d</sup>, Ingrid E. van Putten<sup>e,f</sup>

<sup>a</sup> NOAA Fisheries, Pacific Islands Fisheries Science Center, 1845 Wasp Blvd Building 176, Mail Rm 2247, Honolulu, HI 96818, USA

<sup>b</sup> Wageningen University, Environmental Systems Analysis Group, PO Box 47, 6700AA Wageningen, The Netherlands

<sup>c</sup> University of Hawai'i at Manoa, Joint Institute for Marine and Atmospheric Research, 1000 Pope Road, Marine Science Bldg 312, Honolulu, HI 96822, USA

<sup>d</sup> University of Hawai'i at Manoa, Department of Natural Resources and Environmental Management, 1910 East-West Road, Sherman 101, Honolulu, HI 96822, USA

<sup>e</sup> CSIRO Oceans and Atmosphere, GPO Box 1538, Hobart, TAS 7001, Australia

<sup>f</sup> University of Tasmania, Centre for Marine Socioecology, Hobart, TAS 7001, Australia

## ARTICLE INFO

### Article history:

Received 10 July 2015

Received in revised form

24 September 2015

Accepted 24 September 2015

### Keywords:

Marine resource use

Coral reef ecosystem

Socio-ecological model

Guam

Fisheries

Tourism

## ABSTRACT

Management of tropical reef ecosystems under pressure from terrestrial and extractive marine activities is not straightforward, especially when the interests of extractive and non-extractive marine resource sectors compete. Before implementing management actions, potential outcomes of alternative management strategies can be evaluated in order to avoid adverse or unintended consequences. In tropical reef ecosystems the continued existence of the cultural and recreational fishing activities and the economically important dive-based tourism and recreation industry rest on sustainably managed marine resources. Through a case study of Guam, an ecosystem model was linked with human behavior models for participation in fishing and diving to evaluate future socio-ecological impacts of different management options. Ecosystem indices for reef status and resilience, and extraction potential were identified to evaluate the performance of alternative management scenarios. These marine ecosystem indices link the natural system to human uses (fishing and dive-based tourism and recreation). Evaluating management scenarios indicate that applying a single management tool, such as input controls or marine preserves, without also managing the watershed, is suboptimal. Combining different management tools has negative near-term costs, particularly for the fishing sector, but these are likely to be outweighed by the long-term benefits obtained from greater species abundance. Adopting watershed management measures in addition to fishery regulations distributes the burden for improving the reef status across multiple sectors that contribute to reef pressures.

© 2015 Published by Elsevier Ltd.

## 1. Introduction

Ecosystem-based management is increasingly advocated for marine fisheries around the world [1,2]. Typically, different management strategies could be implemented to achieve the management objectives specified in an ecosystem approach. Management strategy evaluation (MSE), which compares and contrasts outcomes across multiple management objectives, is a tool implicit to an ecosystem approach [3,4]. One MSE approach involves the development of integrated marine ecosystem models, which requires intimate knowledge of the biophysical as well as the

socio-economic systems [5,6]. Integrated models can simulate the ecological, social, and economic consequences of different management approaches [7–9]. Changing human behavior is the main management lever, and thus a critical component of integrated ecosystem modeling [10]. However, human behavior models of non-commercial activities are seldom coupled to biophysical-economic models.

Typically, these integrated models depict economic behavioral drivers quantitatively through the use of metrics, such as profit maximization [11]. Yet these models fail to capture the significant, non-commercial element of the fishery system, where fish might be taken for cultural or traditional celebrations, household consumption or barter [5,12,13]. Moreover, this commercial focus on extraction ignores the significant economic importance of non-market and non-extractive uses of the marine ecosystem [14].

Both reef-fish fisheries and reef-related tourism and recreation

\* Corresponding author at: NOAA Fisheries, Pacific Islands Fisheries Science Center, 1845 Wasp Blvd Building 176, Mail Rm 2247, Honolulu, HI 96818, USA.

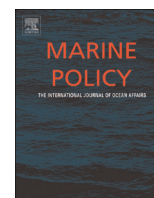
E-mail address: Mariska.weijerman@noaa.gov (M. Weijerman).



ELSEVIER

Contents lists available at ScienceDirect

## Marine Policy

journal homepage: [www.elsevier.com/locate/marpol](http://www.elsevier.com/locate/marpol)

## Towards an ecosystem-based approach of Guam's coral reefs: The human dimension



Mariska Weijerman<sup>a,b,\*</sup>, Cynthia Grace-McCaskey<sup>c</sup>, Shanna L. Grafeld<sup>d</sup>,  
Dawn M. Kotowicz<sup>c</sup>, Kirsten L.L. Oleson<sup>d</sup>, Ingrid E. van Putten<sup>e,f</sup>

<sup>a</sup> NOAA Fisheries, Pacific Islands Fisheries Science Center, 1845 Wasp Blvd Building 176, Mail Rm 2247, Honolulu, HI 96818, USA

<sup>b</sup> Wageningen University, Environmental Systems Analysis Group, PO Box 47, 6700AA Wageningen, The Netherlands

<sup>c</sup> University of Hawai'i at Manoa, Joint Institute for Marine and Atmospheric Research, 1000 Pope Road, Marine Science Bldg 312, Honolulu, HI 96822, USA

<sup>d</sup> University of Hawai'i at Manoa, Department of Natural Resources and Environmental Management, 1910 East-West Road, Sherman 101, Honolulu, HI 96822, USA

<sup>e</sup> CSIRO Oceans and Atmosphere, GPO Box 1538, Hobart, TAS 7001, Australia

<sup>f</sup> University of Tasmania, Centre for Marine Socioecology, Hobart, TAS 7001, Australia

### ARTICLE INFO

#### Article history:

Received 10 July 2015

Received in revised form

24 September 2015

Accepted 24 September 2015

#### Keywords:

Marine resource use  
Coral reef ecosystem  
Socio-ecological model  
Guam  
Fisheries  
Tourism

### ABSTRACT

Management of tropical reef ecosystems under pressure from terrestrial and extractive marine activities is not straightforward, especially when the interests of extractive and non-extractive marine resource sectors compete. Before implementing management actions, potential outcomes of alternative management strategies can be evaluated in order to avoid adverse or unintended consequences. In tropical reef ecosystems the continued existence of the cultural and recreational fishing activities and the economically important dive-based tourism and recreation industry rest on sustainably managed marine resources. Through a case study of Guam, an ecosystem model was linked with human behavior models for participation in fishing and diving to evaluate future socio-ecological impacts of different management options. Ecosystem indices for reef status and resilience, and extraction potential were identified to evaluate the performance of alternative management scenarios. These marine ecosystem indices link the natural system to human uses (fishing and dive-based tourism and recreation). Evaluating management scenarios indicate that applying a single management tool, such as input controls or marine preserves, without also managing the watershed, is suboptimal. Combining different management tools has negative near-term costs, particularly for the fishing sector, but these are likely to be outweighed by the long-term benefits obtained from greater species abundance. Adopting watershed management measures in addition to fishery regulations distributes the burden for improving the reef status across multiple sectors that contribute to reef pressures.

© 2015 Published by Elsevier Ltd.

### 1. Introduction

Ecosystem-based management is increasingly advocated for marine fisheries around the world [1,2]. Typically, different management strategies could be implemented to achieve the management objectives specified in an ecosystem approach. Management strategy evaluation (MSE), which compares and contrasts outcomes across multiple management objectives, is a tool implicit to an ecosystem approach [3,4]. One MSE approach involves the development of integrated marine ecosystem models, which requires intimate knowledge of the biophysical as well as the

\* Corresponding author at: NOAA Fisheries, Pacific Islands Fisheries Science Center, 1845 Wasp Blvd Building 176, Mail Rm 2247, Honolulu, HI 96818, USA.

E-mail address: [Mariska.weijerman@noaa.gov](mailto:Mariska.weijerman@noaa.gov) (M. Weijerman).

socio-economic systems [5,6]. Integrated models can simulate the ecological, social, and economic consequences of different management approaches [7–9]. Changing human behavior is the main management lever, and thus a critical component of integrated ecosystem modeling [10]. However, human behavior models of non-commercial activities are seldom coupled to biophysical-economic models.

Typically, these integrated models depict economic behavioral drivers quantitatively through the use of metrics, such as profit maximization [11]. Yet these models fail to capture the significant, non-commercial element of the fishery system, where fish might be taken for cultural or traditional celebrations, household consumption or barter [5,12,13]. Moreover, this commercial focus on extraction ignores the significant economic importance of non-market and non-extractive uses of the marine ecosystem [14].

Both reef-fish fisheries and reef-related tourism and recreation

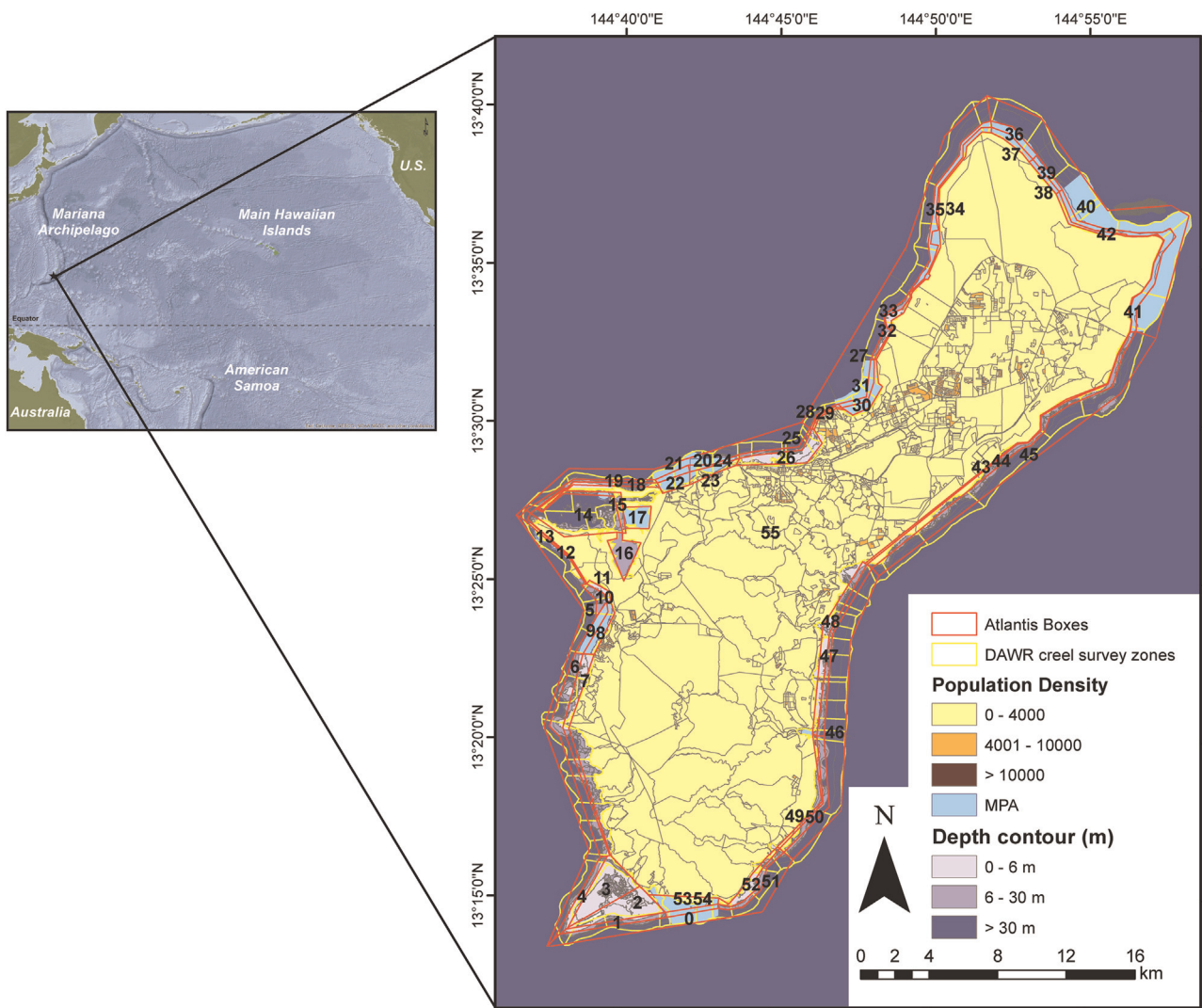
are dependent on the condition of the reefs, which are presently under heavy pressure in many parts of the world [15,16]. Effective management of coral reef resources must consider continued existence of these valuable extractive and non-extractive resource uses as well as the health of the marine ecosystem upon which they depend [17]. In this study, a dynamic reef biophysical model is linked with human behavior models for the coral reef ecosystem of Guam. In Guam, tourism is one of the major contributing economic activities to Guam's gross domestic product [18] and reef-fish fishing is mainly conducted for social or cultural reasons [5]. Despite the importance of a healthy reef ecosystem, the status of Guam's marine resources has deteriorated over the past few decades [19,20]. Guam's reefs have been stressed by poorly executed coastal development and high sediment load from fallow land burning in southern upstream watersheds [20,21]. Inadequate sewage treatment systems and septic tanks have increased the nutrients and bacterial load in coastal waters [22,23]. Crown-of-thorns seastar predation outbreaks, which can be connected with high nutrient concentrations in the waters [24], have caused coral losses [20]. Fishing activities have caused a decline or loss of ecologically important fish species [25–27]. This combination of factors has led decision-makers to actively seek alternative management approaches and tools to guide them [28].

The socio-ecological model developed in this study has three

main components: a quantitative ecological component and qualitative fishery and tourism human behavior components. Combined, these three components can be used to simulate anthropogenic impact scenarios and their ecological effects and *vice versa*. The management scenarios considered were developed in consultation with local resource managers from three agencies in Guam, and include removing existing marine preserves (MPs) and implement catch and/or size limits and reducing land-based sources of pollution through improved watershed management. While coral reef quality increases under some management scenarios, indicators that are important to the dive industry, such as the biomass of charismatic species, remain low. A management scenario that trades off some reduction in reef-fish landings against an increase in the ecological attributes that are favored by divers could be preferable.

## 2. Case study: Guam

Guam, which became an unincorporated territory of the United States in 1950, is the largest and southernmost island in the Mariana Archipelago of the western Pacific Ocean (between 13.2°N and 13.7°N and between 144.6°E and 145.0°E; Fig. 1). Guam is a volcanic island with an area of approximately 549 km<sup>2</sup> and a



**Fig. 1.** Location of Guam in the western Pacific Ocean (inset map) and the spatial model (Atlantis boxes) of the Guam Atlantis Coral Reef Ecosystem model showing human population density, creel survey zones and the depth contours.

shoreline of about 187 km (129 km adjacent to coral reefs) [20]. The human population of Guam is estimated at 159,358 individuals [29]. Chamorros, the earliest inhabitants of Guam, comprise the largest ethnic group at 37.3% of the population [29], Filipinos make up 26.3%, followed by other Pacific Islanders (12.0%), whites (7.1%), and other Asians (6.0%). Nearly 10% of the population identify themselves as having two or more ethnicities [29].

Guam's Gross Domestic Product was \$4.88 billion in 2013 [30], primarily based on tourism and the U.S. military. In 2013, Guam had approximately 1.3 million visitors of whom 70% were from Japan [31]. The tourism sector is estimated to contribute between 18% and 35% of local employment [5]. The U.S. military is the second largest contributor to Guam's economy; its economic importance has increased in the last few years, and is expected to continue to grow with the relocation of thousands of US Marines and their dependents [32].

### 2.1. Marine resource use in Guam

For Guam, fishing and diving are two important reef-based activities directly reliant on the status and ongoing sustainable use of Guam's coral reef ecosystems.

### 2.2. Diving in Guam

Guam residents as well as tourists participate in between 256,000 and 340,000 dives on Guam's reefs every year [18]. Thirteen legal dive outfitters operate on Guam and offer between one dive and up to four dives per day during peak seasons [31]. Additionally, there are anecdotal reports of some unregistered dive operators.

An estimated 6% of 1.34 million annual visitors go scuba diving while on Guam, and 3% of tourists visit Guam with scuba diving as the primary motivation for their trip [33, dive shop owner pers. comm. November 2014]. Although most tourists who visit Guam are from Japan, visitors from other Asian countries such as South Korea, Philippines, Taiwan, Hong Kong, Russia, and China have significantly increased in recent years [33]. This shift in the demographics of tourism is particularly relevant as the participation in dive trips varies by country of origin, with tourists from Hong Kong and Taiwan being far more likely to participate in scuba diving than tourists from Japan, the US, and Korea (Table 1).

### 2.3. Fishing on Guam

While diving is a popular non-extractive use of Guam's coral reef resources, reef fishing is an important extractive use of marine resources [18]. Guam's near-shore reef fishery is a multispecies and multi-gear fishery. Fishing occurs from boats and from shore involving trolling (mostly for pelagic fish), net fishing (e.g., cast net, gillnet, and surround net), and spearfishing (snorkel and scuba). Over the years gear methods have evolved and, new, more efficient catch methods used, some with detrimental impact. For instance, the relatively new practice of spearfishing on scuba has

been linked to a decrease in large-size fishes leading to a targeting of smaller fish prior to reaching sexual maturity [25,34].

It is estimated that between 35% and 45% of Guam's households were involved in near-shore fishing [18]. Much of the fish caught on Guam is not traded in the market (and is not recorded in commercial statistics) but is instead eaten within the household or shared with family and friends. A 2005 survey of Guam households found that out of the fish consumed by households, nearly one-quarter (24%) was caught by the respondent or another member of the household, and an additional 14% was caught by a friend or extended family member [18]. The social obligation to share one's fish catch extends to all fishermen [35]. This cultural practice is particularly important among Guam's Chamorro residents, who often give a large proportion of their catch to family, friends, and the local community [36,37]. Some of the other social reasons to go fishing include spending time with family and friends, to provide fish for a particular event or to teach members of the younger generation traditional fishing practices. These practices have non-market value as they can underpin social networks and cultural ties throughout the Pacific Islands region [36].

## 3. Methods

In this study a quantitative biophysical model of the coral reef ecosystems around Guam [38,39] was linked with qualitative behavior models of two reef-dependent sectors (coral reef fishing and dive tourism). The ecosystem model was based on the Atlantis framework and was developed in consultation with community experts (Appendix A) at workshops on Guam in November 2012 and June 2014. The aim of the Guam Atlantis model was to build a virtual coral reef ecosystem for managers and biologists to explore questions and provide a tool to undertake scenario analyses. The model integrates best available data from multiple disciplines, such as hydrology and marine biology, at multiple scales. Details can be found in Weijerman et al. [38] and Weijerman et al. [39].

Atlantis is a deterministic model spatially resolved in three dimensions that tracks nutrient flows through the main biological groups in the ecosystem. For Guam Atlantis two of four possible modules were parameterized [38]. The first is an ecological module that simulates primary ecological processes (consumption, production, waste production, migration, predation, recruitment, habitat dependency, and mortality). The reef-fish species were aggregated in functional groups based on their diet, life history characteristics, and functional role [38]. The second is a physical oceanographic module that represents the bathymetry, major currents, salinity, and temperature and is based on the Regional Ocean Modeling System framework developed for the Coral Triangle [40]. The third module simulates fisheries (or other human activities) and was simplified as a fixed fishing mortality per functional group based on historical catches from shore-based creel surveys conducted by the Guam Division of Aquatic and Wildlife Resources between 2010 and 2012 (DAWR). Due to a lack of data, this module did not include the effects of fishing gear on the benthic habitat and species (e.g., physical damage to corals, ghost net fishing, and damage resulting from fish lines). Finally, the fourth Atlantis module simulates the socio-economic dynamics, which typically represents commercial fisheries governed by economic rules, and was replaced by the fisher and diver behavior models, outlined below.

The recently developed Atlantis model can correctly simulate key dynamics in coral reef ecosystems around Guam [39]. These dynamics include ocean acidification [41], ocean warming [42], reef accretion and erosion [43], the relationship between the complexity of a reef ecosystem and its function to provide shelter

**Table 1**  
Breakdown of visitors by country [34] and the estimated number of people who went diving [18].

Country	Arrivals (FY2012)	Dive participation (2002) (%)	# Divers
Japan	901,683	5	45,084
Korea	164,821	2	3296
Hong Kong	8396	15	1259
Taiwan	49,851	14	6979
United States	50,967	8	4077

for fish species [44,45], the effects of nutrient and sediment input on coral growth [46,47] and coral–algal dynamics (i.e., macroalgae can overgrow corals, outcompete corals in nutrient-enriched waters, prevent coral recruit settlement, and crustose–coralline algae and, to a lesser extent, turf algae facilitate coral recruitment [48–50]).

Modeled output ecosystem metrics of Guam Atlantis were based on a 30-year simulation run and averaged over the last five years to account for interannual variation. Selected ecosystem metrics indicative of reef status and resilience [51–53] include: species abundance (measured as total reef-fish biomass), number of large fish (measured as the number of a slow growing species, represented by sharks, in the largest size class), and reef condition (measured as the ratio of calcifiers (corals and crustose–coralline algae) to non-calcifiers (turf and fleshy macroalgae)). Those metrics were augmented with two tourism-related metrics, abundance of charismatic species and reef-fish diversity (derived from species richness, i.e., the number of functional groups present, and the inverse of Pielou’s Evenness:  $J' = H'/H'_{max}$  where  $H'$  is the Shannon–Wiener diversity index), to link to the diver behavior model. For the link to the fishery behavior model two socio-economic metrics were added: landings of targeted fish species and landings of all species (including invertebrates; Fig. 2).

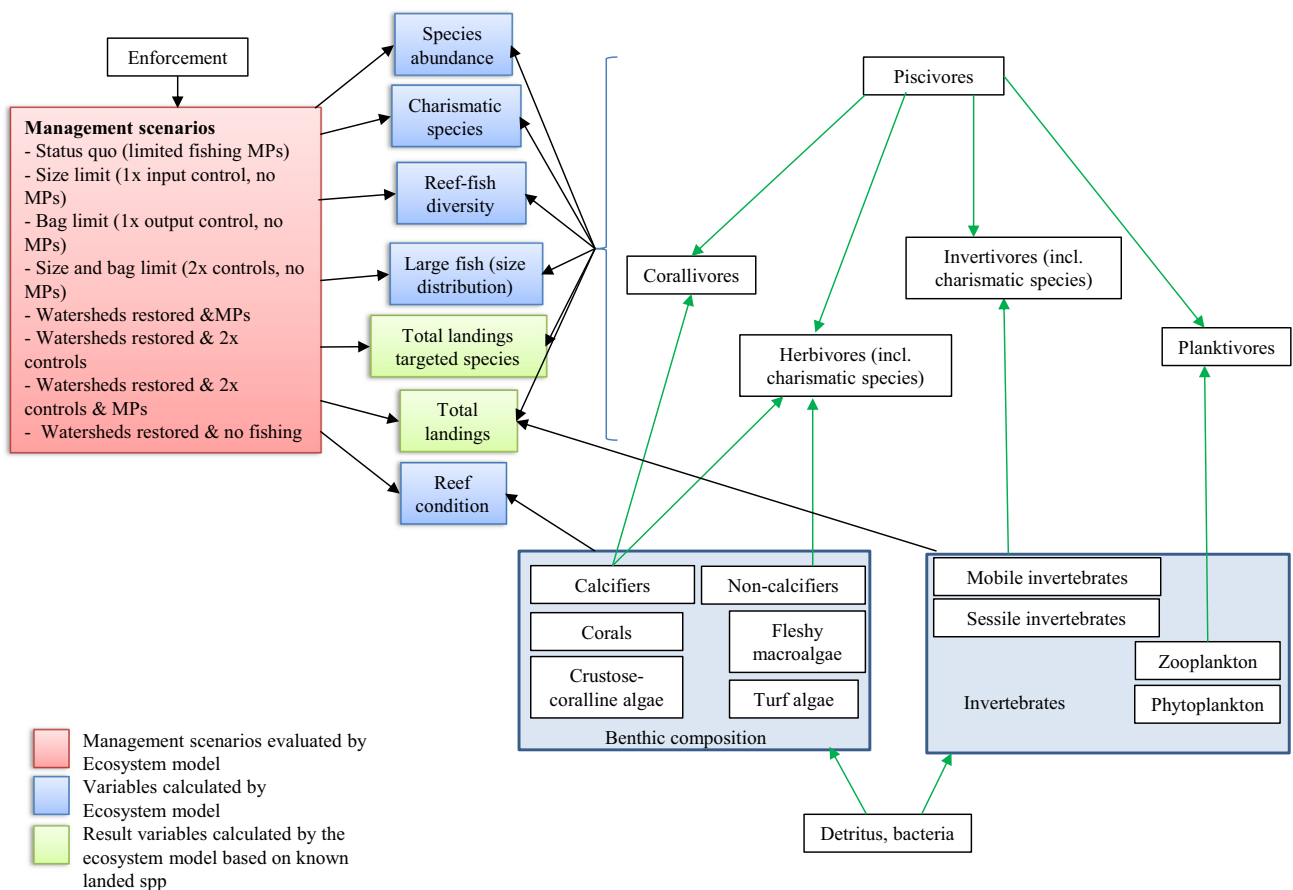
The qualitative human behavioral models leverage previously published information and expert knowledge from people who have worked with Guam’s dive tourism sector or fishing sector (or both). The disciplinary background of the experts included anthropology, economics, resource science, sociology, and biological sciences. The two behavioral models focus on different aspects of the reef ecosystem; the tourism model focuses on reef condition

while the fishery model focuses on the extraction of reef-fish species. For the tourism model, the selected ecosystem metrics are key to providing a high quality diving experience. For example, the presence or absence of charismatic species [54], such as the humphead wrasse, *Cheilinus undulatus*, and bumphead parrotfish, *Bolbometopon muricatum*; coral cover [55] (indicated by the ecosystem metric reef condition), species abundance [56], and water clarity [57] (implicitly included in reef condition, i.e., with high nutrients and/or sediments in the water column, clarity decreases and algal growth is favored over coral growth reducing the reef condition ratio).

For the fishery model, species abundance was selected, which is expected to influence reef-fish fishery participation. The fisheries relevant ecosystem metrics, landings of targeted fish species and total landings, were used to discuss consequences of changes in expected fisher behavior. A species was assumed to be a target species when its representation in the landings of a particular gear type was greater than 20% (DAWR shore-based creel survey data).

Quantitative change was projected in the selected ecosystem metrics to qualitatively explore six management scenarios (B–F) simulated using the Guam Atlantis model and compared to the status quo scenario (A) (Table 2).

As fisherman-specific catch data were not available, there were no current estimates of daily or weekly catches to set a hypothetical bag limit for scenarios Bi, Bii, D and E. Instead, for each functional group an annual allowable catch was set at 75% of the status quo landings at the end of a 30-year model run. This allowable catch was then divided by 52 to get a weekly bag limit. When this weekly limit was reached in the model run, fishing was stopped for the remainder of the week. For size limits, fishing of all



**Fig. 2.** Conceptual representation of the Guam Atlantis Coral Reef Ecosystem Model. Foodweb connections between (simplified) functional groups are shown by green arrows. Black arrows indicate the linkages between the ecological model and the ecosystem metrics.

**Table 2**  
Details of simulated management scenarios. LBSP=land-based sources of pollution.

Scenario	Presence of marine preserves <sup>1</sup>	Existing levels of LBSP	Fishing effort compared to status quo (%)	Fishing of juvenile fish
A: Status Quo	Yes	Yes	100	Goatfish, rabbitfish, jacks
Bi: Bag and size limits	No	Yes	75	No
Bii: Bag limit	No	Yes	75	Goatfish, rabbit fish, jacks
Biii: Size limit	No	Yes	100	No
C: restored watersheds	Yes	No	100	Goatfish, rabbit fish, jacks
D: Bag and size limits, restored watersheds	No	No	75	No
E: Full regulations	Yes	No	75	No
F: No fishing, restored watersheds	Yes	No	0	No

<sup>1</sup> Preserves are no-take areas except for seasonal take of juveniles and limited hook and line fishing from shore.

fishes smaller than their size at maturity was stopped, including the seasonal runs on juvenile rabbitfish, goatfish and jacks.

For ease of interpretation and visualization, the 5-year mean values of the ecosystem metrics were normalized over all strategies resulting in values between zero (worst case) and one (best case).

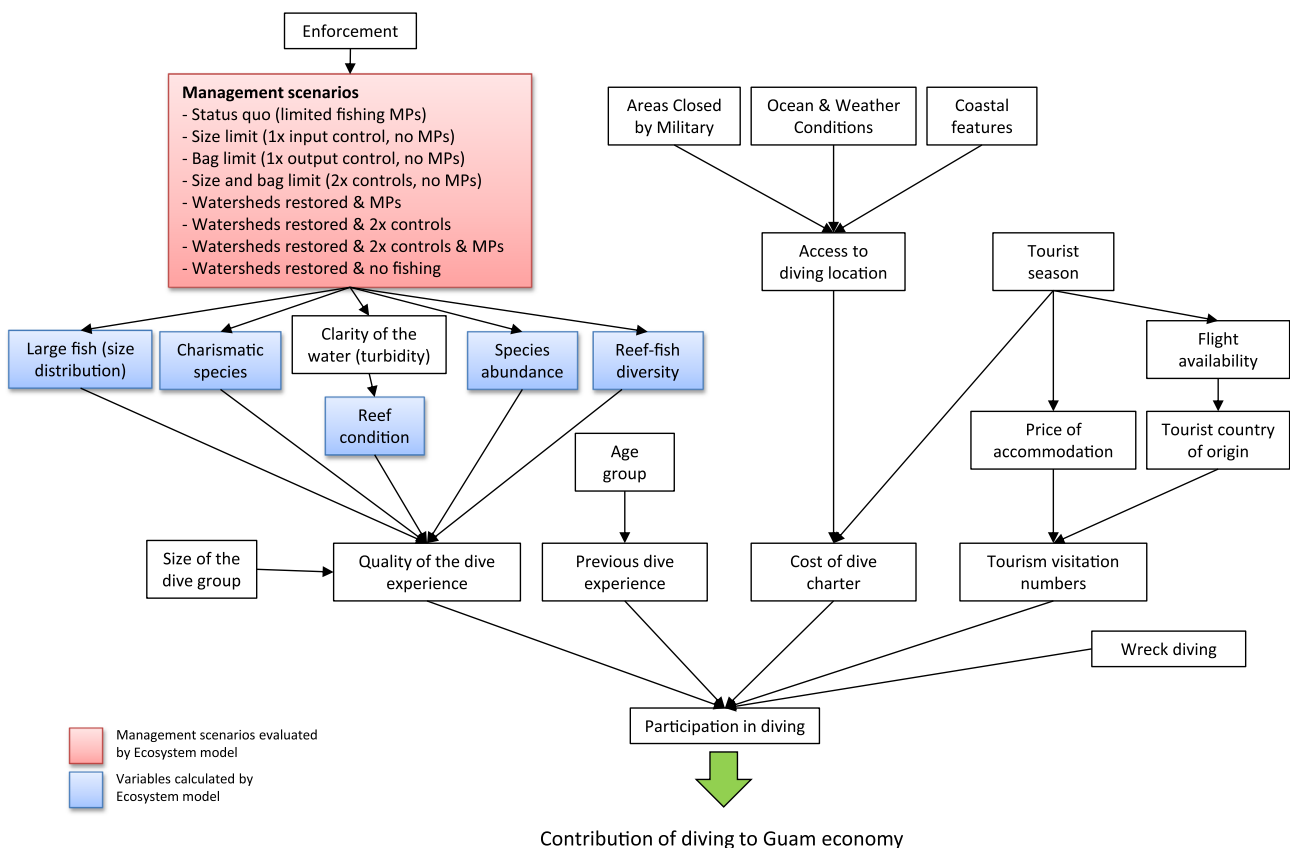
**4. Results**

The results comprise two main components: (1) a description of the theoretical dive tourism and reef fishing participation behavior models; and (2) a description of the changes in the ecosystem metrics as predicted by the Guam Atlantis ecosystem model for the different management scenarios. In the discussion these results are brought together by examining the socio-ecological implications of the different management approaches.

**4.1. Dive behavior model**

A qualitative model linking the ecological, economic, and social factors that influence participation in dive trips in Guam is shown in Fig. 3. A full description of nodes in the model is provided in Appendix B and a description of the relationship between nodes in Appendix C.

Guam's dive sector is heavily dependent on healthy coral reefs, and there is a clear connection between environmental attributes (i.e., the ecological indicators in the ecosystem model) and diver willingness to pay for diving on a reef [58]. Management can indirectly influence diver participation and the dive experience by changing the 'quality' of the environment. For example, water clarity (turbidity), several areas around Guam have turbidity issues as a result of land-based pollution and changing water clarity could strongly influence the quality of the dive experience. However, it is acknowledged that other marine management not further explored here, can also influence the quality of a dive



**Fig. 3.** Influence of different environmental and socioeconomic factors on participation in dive trips in Guam.



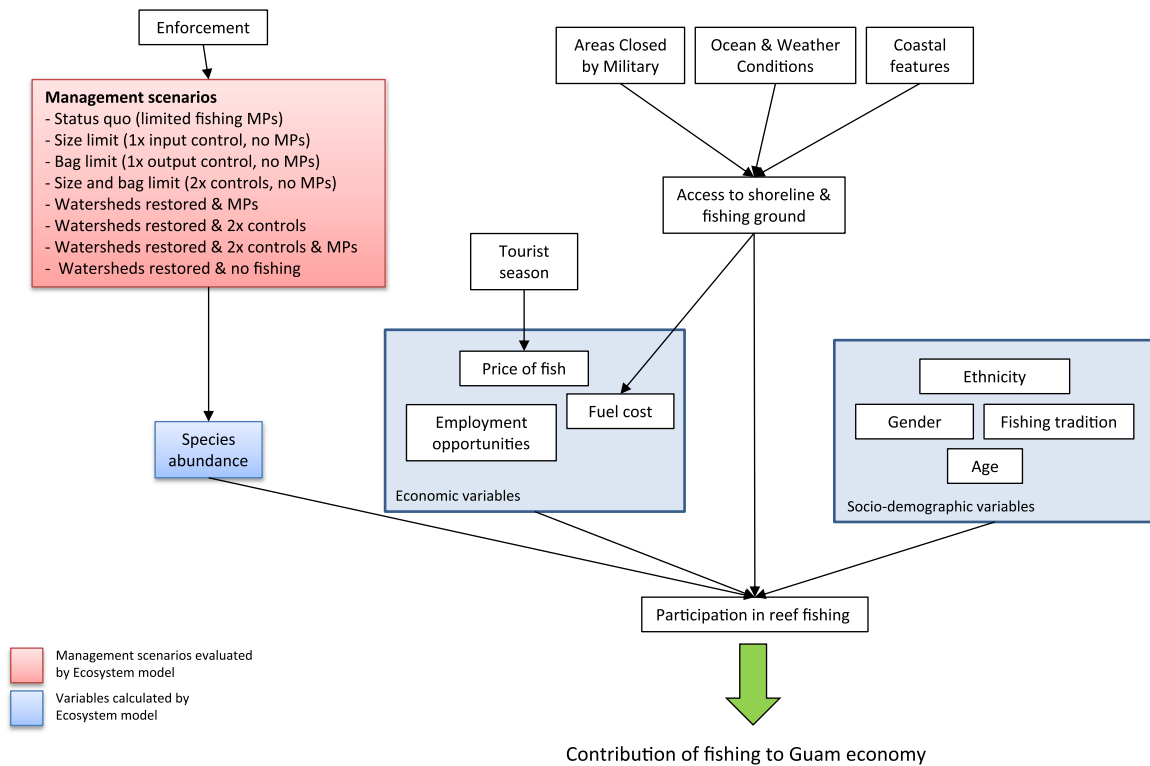


Fig. 4. Influence of species abundance, economic and socio-demographic variables and participation in reef fishing on Guam.

experience. These management approaches include, for instance, restricting diver behavior on the reef by placing limits on their autonomy [59], controlling access to marine protected areas [60,61] or avoiding inter-sector conflict by spatially limiting contact with fishers or fishing gear [62].

Dive participation can be influenced by many other economic and social factors, some of which are outside the direct scope of influence of resource managers, such as tourist visitation numbers. Tourist visitation numbers and country of origin are of particular interest, as some tourists are more likely to go diving than others.

#### 4.2. Reef fishing participation model

Similar to the diving model, a qualitative model describing the socio-demographic, economic, and ecological factors influencing participation in Guam's reef fishery was developed (Fig. 4 and Appendices D and E).

Strategies for managing marine resource extraction and coral reef health can influence participation in reef fishing by affecting the abundance of exploited and non-exploited species, and by affecting where and when fishing can occur, what species (and sizes) can be taken, and the type of gear that can be used. Management scenarios introducing bag and size limits restrict the

number and size of fish catch, which can influence how and where fishers choose to fish [63,64]. Management of adjacent watersheds can decrease sedimentation and increase water quality, improving near-shore coral reef ecosystems that could lead to higher species abundance for reef fishing.

Spatial management of marine areas, such as marine preserves, can affect access to shoreline and nearshore fishing grounds [65]. Access to fishing grounds is also affected by environmental variables, including coastal features, such as cliffs [5], and adverse ocean and weather conditions and by military exercises [66].

Ethnicity [5], gender, age [13] and whether one's family has been traditionally engaged in fishing are socio-demographic variables that play a role in determining participation in reef fishing. Economic variables that affect a fisher's decision to go reef fishing include the price of fish, which is partially determined by whether it is high tourist season, opportunities for employment, and the cost of fuel [13].

#### 4.3. Changes in ecological indicators as a result of management

Performance of scenarios that include restored watersheds out-competed the other scenarios in terms of better reef condition and species evenness (Fig. 5). The full regulation and no fishing and

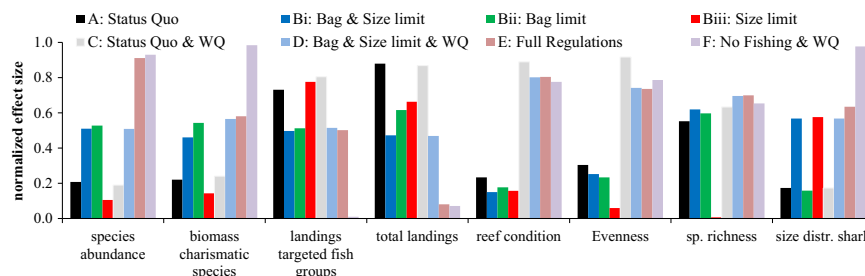


Fig. 5. Effect size based on normalized values of ecosystem metrics at the end of a 30-year simulation to allow comparisons of alternative management scenarios. Modeled scenarios are explained in "2 Methods" section.

**Table 3**  
Relative effect size of ecosystem metrics at the end of a 30-year simulation of the various management scenarios to the Status Quo scenario. Values are means of the last five years of simulations. Overall effect size is the mean of the normalized ecosystem metric values as represented in Fig. 5.

	Status quo A	Bag and size limits Bi	Bag limit Bii	Size limit Biii	Water-shed Rest. C	Bag and size and watersh rest. D	Full reg. E	No fishing and watershed rest. F
Total reef-fish biomass	1	1.12	1.13	0.94	0.99	1.12	1.31	1.33
Biomass iconic species	1	2.50	2.97	0.34	1.14	3.09	3.18	7.56
Landings targeted groups	1	0.79	0.80	1.05	1.08	0.80	0.79	0.0
Total landings	1	0.53	0.67	0.71	0.98	0.52	0.02	0.0
Reef condition	1	0.96	0.98	0.97	1.24	1.19	1.19	1.18
Evenness	1	1.00	1.00	0.98	1.04	1.02	1.02	1.03
Sp. richness	1	1.00	1.00	0.98	1.00	1.00	1.00	1.00
Size distribution sharks	1	12.32	0.37	12.54	1.00	12.32	14.10	31.01
Overall effect size	0.41	0.44	0.42	0.31	0.59	0.61	0.62	0.65

restored watershed scenarios had a positive effect on the species abundance, but performed worst of all scenarios with regard to total landings (Fig. 5).

Compared to the status quo scenario (scenario A), removing marine preserves while imposing bag and size limits (scenario Bi) resulted in a 12% increase in species abundance and in 2.5 times the biomass of charismatic species (Table 3). However, fish landings were 79% of the status quo landings and total landings (including invertebrates) dropped to 53% of the status quo landings.

## 5. Discussion

Effective management of tropical reef ecosystems under pressure from terrestrial and extractive marine activities is not straightforward, especially with potentially competing reef-based activities. The shift towards ecosystem-based fisheries management (EBFM) demands quantitative tools to support policy and management decisions. Ecosystem modeling and management strategy evaluation (MSE) are widely used in single species management testing and are becoming increasingly used in support of EBFM [67]. For EBFM evaluation, ecological models are coupled with socio-economic models to uncover societal linkages [2,10]. Evaluation of the potential effect of different management approaches prior to implementation through modeling will reduce the chance of adverse or unexpected ecological or socio-economic outcomes in the future and likely improve performance and compliance [9].

While the focus of this work was on a case study in Guam, the non-commercial reef-fish fishery and economic importance of diving also apply to many other tropical islands and coast lines making this approach generally applicable. EBFM that specifically includes the human dimension has gained traction among scientists, politicians and resource managers in the last decade [2,68]. However, only a few models have attempted to couple biophysical and socio-economic dynamics for coral reef ecosystems [69–71]. Human dimension-centered models have examined different coral reef ecosystem states and the links to socio-economic conditions and fishing participation [68], as well as the effects of gear types on the overall reef condition [72]. Hence, the approach presented in this study is novel as it includes the entire ecosystem from plankton to humans and could be a valuable tool for EBFM.

Diminishing catches affecting the fishing sector have prompted a discussion on ways in which improved fishing and water quality outcomes may be achieved for Guam [28, J. Cameron, POC Guam Coral Reef Conservation Program, pers. comm. July 2014]. With the approach outlined in this case study, key human behavior models were linked with a biogeophysical model to gain insight into the ecosystem metrics that link the two systems and evaluation of the consequences of management for socio-ecological effects in both

the fishing and diving sector. The impacts of the management scenarios were quantified by means of ecosystem indices that could be meaningfully interpreted (although in a qualitative manner) in the context of the main marine activities in Guam.

### 5.1. Trade-offs between marine sectors

At the heart of EBFM are the complex trade-offs between objectives; these trade-offs can be between ecological and socio-economic objectives (as in this study), but competing uses can also require trade-offs to be made between different socio-economic objectives. It is clear that both Guam's dive industry and reef fishing activities are inherently reliant on healthy coral reef ecosystems. The number of ecological indicators that the dive sector aims to maximize are more numerous (four in total) than the fishing sector, where species abundance (total reef fish biomass) is the only direct link to participation in reef fishing. In evaluating these trade-offs, that should be taken into account.

For the tourism and recreation sectors, divers on Guam are important to Guam's economy and have demonstrated a willingness to make financial contributions towards marine management [58]. While the dive model presented here does not allow for backwards interactions, it is important to note that given Guam's reliance on tourism, the ecological attributes that indicate coral reef quality may influence other factors, such as, tourist visitation rates. Guam is a very popular diving location due to its high biodiversity and a change in the perception of Guam as a lower quality dive location could have a negative effect on the tourism industry.

From the standpoint of the diving industry, a management scenario where there is no fishing and no land-based source pollution provides optimal results with the highest values for ecological indicators. However, this scenario eliminates all reef-fish fishing which may be impractical and infeasible politically in addition to not being economically optimal as commercial fishing also contributes to the local economy, albeit a smaller amount than tourism. Importantly, the absence of fishing would counter the traditional use and identity of Guam's residents. Even though it is not easy to express the value of cultural fishing in monetary terms, the maintenance of cultural activities has important links to cultural identity and a healthy community and society [37].

### 5.2. Interpreting alternative management scenarios

Alternative fisheries management scenarios will result in different ecological outcomes. Input and output controls, such as size and bag limits, will limit reef fishing by restricting the size and number of fishes that can be taken [63,64]. Based on the ecosystem metrics for the management scenario, it is clear that imposing a simple input restriction (size limits) without any additional

management measures will not improve the ecological outcomes for the reef; in fact, it may prove to worsen outcomes compared to the status quo, as fishing effort stays the same (so fishers will catch more larger individuals to make up the forgone catches of smaller fishes). Combined input and output controls in the form of size and bag limits or bag limits on their own will only marginally improve the ecological outcomes for the reefs' status compared to the status quo. In practice, input management tools are relatively easy to implement [73] and could mean a fast change in reef fishing behavior, but the net result on overall participation in fishing activities, compliance behavior, and location choice is uncertain. For example, under size limits, fishers may choose to avoid areas where they know there are higher numbers of small fish, which in turn may lead to localized depletion in areas with larger fish. Similarly, fishers may choose to fish closer to shore to reduce fuel cost if there are bag limits – again causing localized effects. When areas are improving ecologically under the restored watershed management, fishers may choose to direct their effort to those areas. In other words, a transfer of effort as a consequence of the management scenarios is possible, which makes it difficult to determine with certainty the total effect of controls on fishing participation.

The ecological metrics indicate that watershed restoration is an important contributor to a healthy marine ecosystem. However, watershed restoration on its own is not adequate to address the problems facing Guam's reefs and, in addition, may not achieve enough to provide the coral reef quality desired by the dive industry. While coral reef quality increases under the status quo and improved watershed scenario, total fish species biomass and the biomass of charismatic species remain low. Given the importance of these indicators for divers, selecting an alternative management scenario that allows for some reduction in fishery landings to be traded off against an increase in the ecological attributes that are favored by divers may be preferable to managers looking to balance the needs of both sectors.

Surprisingly, the scenarios with full regulations including size and bag limits and watershed restoration with retention of existing MPs (scenario E) and without the MPs (Scenario D) achieve similar ecological outcomes. The main difference is in the total reef fish biomass that is 17% higher when existing MPs are retained, most likely because fish can grow larger in MPs [26]. Removing MPs would increase shoreline and nearshore access to areas currently closed to fishers. It is likely that fishers will begin fishing in some of the areas that were common fishing grounds prior to being closed to fishing when MPs were established [65]. Fishers may also choose to fish with different gear and target different reef fish with the opening of MPs. The net result of reef-fishing participation in scenarios where MPs are opened cannot be determined. However, the potential for interactions between divers and fishers if MPs were opened may be concerning, as divers in other locations have expressed a preference to avoid such interactions [62].

Results show that there is little point in trying to manage the reef ecosystem and those who use it without also managing the watershed. Over a 30-year timeframe, the three management approaches with the most positive ecological impact all include restored watersheds. Three out of four ecosystem metrics important to the dive sector will improve if size and bag limits are imposed, the watershed is managed, and existing marine preserves are maintained. In the short term there will be some negative impacts particularly on the fishing sector as a consequence of size and bag limits, but the long-term benefits for fishers and divers obtained from greater species abundance are likely to outweigh these short term costs. Adopting watershed measures in addition to input and output controls distributes the burden for improving the reef status across multiple entities responsible for reef pressures.

## 6. Next steps

Despite the difficulties in predicting the overall behavioral changes of fishers and divers under the different scenarios, the conceptual behavioral models (combined with the ecosystem model) provide a starting point for discussions with stakeholders. Effective resource management of coral reef ecosystems is highly dependent on effective involvement of local communities [74]. The qualitative model of human behavioral drivers for reef fishing does not currently include probability distributions to enable a quantitative analysis. However, the behavioral models can be transformed into Bayesian Networks (BN), which would enable quantitative analyses of management approaches and the effects on the probability of participation in the dive and fishing sectors in Guam [17,75]. Even though the probability density function for a number of the variables was known, the conditional probabilities and relationships between mostly the social and cultural variables needs to be confirmed and tested by the local Guam community. Setting and testing the underlying probability distribution assumptions is an important component of developing a BN especially to promote local community ownership of the BN and modeling results.

## 7. Conclusion

Linking an ecological ecosystem model with socially and economically important human behavior gives us a better understanding of changes in ecological performance due to management of human-use activities. An integrated ecosystem model for Guam's fringing reef ecosystem enabled us to simulate alternative management scenarios and assess the performance criteria on both dive participation and participation in reef-fisheries. When the objectives for reef ecosystems encompass conservation and extraction goals, an integrated ecosystem model can make the trade-offs between different uses explicit. This allows managers to weigh the various performance measures and objectively consider the trade-offs between resource users and determine a 'best management solution'. From this study it is clear that the optimal management solution for the reef ecosystem in Guam (and the dive tourism and fishing sector) is to combine input and output controls, but most importantly, to restore the watershed and to thus reduce land-based ecological impacts.

## Acknowledgments

Funding was provided to MW and SG by the NOAA Coral Reef Conservation Program, project no. 817. We like to thank Adel Heenan and Rusty Brainard for their improvements to the manuscript. The scientific results and conclusions, as well as any views or opinions expressed herein, are those of the authors and do not necessarily reflect those of NOAA or the Department of Commerce.

## Appendix A. Supplementary material

Supplementary data associated with this article can be found in the online version at <http://dx.doi.org/10.1016/j.marpol.2015.09.028>.

## References

- [1] K. Sainsbury, U.R. Sumaila, *Incorporating ecosystem objectives into management of sustainable marine fisheries, including 'Best Practice' reference points and use of marine protected areas*, in: M. Sinclair, G. Valdimarson (Eds.),

- Responsible Fisheries in the Marine Ecosystem, FAO, 2003, pp. 343–361.
- [2] E. Pikitch, E. Santora, A. Babcock, A. Bakun, R. Bonfil, D.O. Conover, et al., Ecosystem-based fishery management, *Science* 305 (2004) 346–347.
  - [3] A. Smith, Management strategy evaluation: the light on the hill, *Popul. Dyn. Fish. Manag.* (1994) 249–253.
  - [4] K.J. Sainsbury, A.E. Punt, A.D. Smith, Design of operational management strategies for achieving fishery ecosystem objectives, *ICES J. Mar. Sci.: J. Conseil* 57 (2000) 731–741.
  - [5] S. Allen, P. Bartram, Guam as a fishing community. Admin Rep H-08-01. Pacific Islands Fis. Sci. Cent., NMFS, NOAA, Honolulu HI 96822-2396, Pac. Islands Fish. Sci. Cent. (2008) 55.
  - [6] S.H. Yee, J.F. Carriger, P. Bradley, W.S. Fisher, B. Dyson, Developing scientific information to support decisions for sustainable coral reef ecosystem services, *Ecol. Econ.* (2014).
  - [7] A. Smith, K. Sainsbury, R. Stevens, Implementing effective fisheries-management systems—management strategy evaluation and the Australian partnership approach, *ICES J. Mar. Sci.: J. Conseil* 56 (1999) 967–979.
  - [8] A.D.M. Smith, E.J. Fulton, A.J. Hobday, D.C. Smith, P. Shoulder, Scientific tools to support the practical implementation of ecosystem-based fisheries management, *ICES J. Mar. Sci.: J. Conseil* 64 (2007) 633–639.
  - [9] E.A. Fulton, A.D.M. Smith, D.C. Smith, P. Johnson, An integrated approach is needed for Ecosystem Based Fisheries Management: Insights from ecosystem-level management strategy evaluation, *PLoS ONE* 9 (2014) e84242.
  - [10] E.A. Fulton, A.D. Smith, D.C. Smith, I.E. van Putten, Human behaviour: the key source of uncertainty in fisheries management, *Fish Fish.* 12 (2011) 2–17.
  - [11] I.E. van Putten, S. Kulmala, O. Thébaud, N. Dowling, K.G. Hamon, T. Hutton, et al., Theories and behavioural drivers underlying fleet dynamics models, *Fish Fish.* 13 (2012) 216–235.
  - [12] A. Everson, A.M. Friedlander, Catch, effort, and yields for coral reef fisheries in Kane 'ohe Bay, O 'ahu and Hanalei Bay, Kaua 'i: comparisons between a large urban and a small rural embayment, *Status Hawaii's Coast. Fish. New Millen.* (2004) 110–131.
  - [13] J. Hospital, S. Beavers, Economic and social characteristics of Guam's small boat fisheries. Honolulu: Pacific Islands Fish. Sci. Cent., Natl. Mar. Fish. Serv., NOAA; 2012. p. 60p+Appendices.
  - [14] R.K. Craig, Coral reefs, fishing, and tourism: tensions in US ocean law and policy reform, *Staf. Environ. Law J.* 27 (2008) 3–41.
  - [15] R.E. Brainard, C. Birkeland, C.M. Eakin, P. McElhany, M.W. Miller, M. Patterson, et al. Status review report of 82 candidate coral species petitioned under the U.S. Endangered Species Act. US Dep Commer, NOAA Tech, Memo, NOAA-TM-NMFS-PIFSC-27. Honolulu, HI2011. p. 530.
  - [16] L. Burke, K. Reyter, M. Spalding, A. Perry, Reefs at risk revisited. Reefs at Risk, World Resources Institute, Washington, DC (2011), p. 114.
  - [17] É.E. Plagányi, I. van Putten, T. Hutton, R.A. Deng, D. Dennis, S. Pascoe, et al., Integrating indigenous livelihood and lifestyle objectives in managing a natural resource, *Proc. Natl. Acad. Sci.* 110 (2013) 3639–3644.
  - [18] P. Van Beukering, W. Haider, M. Longland, H. Cesar, J. Sablan, S. Shjegstad, et al., The economic value of Guam's coral reefs, *Univ. Guam Mar. Lab. Tech. Rep.* 116 (2007) 102.
  - [19] I.D. Williams, J.K. Baum, A. Heenan, K.M. Hanson, M.O. Nadon, R.E. Brainard, Human, oceanographic and habitat drivers of central and western Pacific coral reef fish assemblages, *PLoS ONE* 10 (2015) e0120516.
  - [20] D. Burdick, V. Brown, J. Asher, M. Caballes, M. Gawel, L. Goldman, et al. Status of coral reef ecosystems of Guam Guam: Bureau of Statistics and Plans, Guam Coastal Management Program; 2008. p. iv+76pp.
  - [21] E. Wolanski, R.H. Richmond, G. Davis, V. Bonito, Water and fine sediment dynamics in transient river plumes in a small, reef-fringed bay, Guam, *Estuar. Coast. Shelf Sci.* 56 (2003) 1029–1040.
  - [22] E.P.A. Guam, Integrated Report Barrigada, Guam: Water Programs Division; 2010.
  - [23] L.J. Raymundo, K. Kim, J. Redding, R.J. Miller, K. Pinkerton, D. Baker, Links between deteriorating coral health and sewage pollution of Guam reef flats. University of Guam Marine Laboratory Technical Report No. 131; 2011. p. 24.
  - [24] G. De'ath, K.E. Fabricius, H. Sweatman, M. Puotinen, The 27-year decline of coral cover on the Great Barrier Reef and its causes, *Proc. Natl. Acad. Sci.* 109 (2012) 17995–17999.
  - [25] P. Houk, K. Rhodes, J. Cuetos-Bueno, S. Lindfield, V. Fread, J. Mcllwin, Commercial coral-reef fisheries across Micronesia: a need for improving management, *Coral Reefs* 31 (2012) 13–26.
  - [26] B.M. Taylor, J.L. Mcllwin, A.M. Kerr, Marine reserves and reproductive biomass: a case study of a heavily targeted reef fish, *PLoS ONE* 7 (2012) e39599.
  - [27] S. Bejarano, Y. Golbuu, T. Sapolu, P.J. Mumby, Ecological risk and the exploitation of herbivorous reef fish across Micronesia, *Mar. Ecol. Prog. Ser.* 482 (2013) 197–215.
  - [28] M. Weijerman, V. Brown, A summary of the Guam Coral Reef Ecosystem Model workshop and discussions in Guam, November 14–20, 2012 Admin. Rep. H-13-3: Pacific Islands Fisheries Science Center, NMFS, NOAA ; 2013, p. 14.
  - [29] U.S. Census Bureau, American Factfinder; 2014.
  - [30] Bureau of Economic Analysis, The Bureau of Economic Analysis releases 2013 estimates of Gross Domestic Product for Guam; 2014.
  - [31] Guam Visitors Bureau, Visitor arrivals in 2013 even better than 2012; 2014.
  - [32] M. Ruane, Guam's Economy: Potentially Better than 2012; 2013.
  - [33] Guam Visitors Bureau, Wedding, Dive, and Waterpark: Guam's Growing Industries. Annual report; 2013, p. 2013.
  - [34] S.J. Lindfield, J.L. Mcllwin, E.S. Harvey, Depth refuge and the impacts of SCUBA spearfishing on coral reef fishes, *PLoS ONE* 9 (2014) e92628.
  - [35] J. Amesbury, R. Hunter-Anderson, Review of archaeological and historical data concerning reef fishing in the US flag islands of Micronesia: Guam and Northern Mariana Islands Prepared for the Western Pacific Regional Fishery Management Council, Honolulu: Micronesian Archaeological Research Services, Guam; 2003, p. 147.
  - [36] T.K. Pinhey, D.H. Rubinstein, S.M. Vaughn, Fishing and fiestas in Guam: an exploratory note on the reinforcement of cultural traditions, *Pac. Stud.* 29 (2006) 74–82.
  - [37] D. Kotowicz, L. Richmond, Traditional Fishing Patterns in the Marianas Trench Marine National Monument Honolulu: Pacific Islands Fish. Sci. Cent., Natl. Mar. Fish. Serv., NOAA; 2013, p. 54.
  - [38] M. Weijerman, C. Kaplanl, E.A. Fulton, R. Gorton, S. Grafeld, R. Brainard, Design and parameterization of a coral reef ecosystem model for Guam. U.S. Dep. Commer., NOAA Tech. Memo., NOAA-TM-NMFS-PIFSC-43; 2014. p. 133+ Appendices.
  - [39] M. Weijerman, E.A. Fulton, C. Kaplanl, B. Gorton, R. Leemans, W.M. Mooij, et al., An integrated coral reef ecosystem model to support resource management under a changing climate, *PLoS ONE* (2015) (in preparation).
  - [40] F.S. Castruccio, E.N. Curchitser, J.A. Kleypas, A model for quantifying oceanic transport and mesoscale variability in the Coral Triangle of the Indonesian/Philippines Archipelago, *J. Geophys. Res.: Oceans* 118 (2013) 6123–6144.
  - [41] J.A. Kleypas, R.A. Feely, V.J. Fabry, C. Langdon, C.L. Sabine, L.L. Robbins, Impacts of ocean acidification on coral reefs and other marine calcifiers: A guide for future research. Report of a workshop held 18–20 April 2005, St Petersburg, FL, sponsored by NSF, NOAA, and the US Geological Survey Report of a workshop held 18–20 April 2005, St. Petersburg, FL, sponsored by NSF, NOAA, and the US Geological Survey; 2006, p. 88.
  - [42] P.L. Jokiel, S.L. Coles, Response of Hawaiian and other Indo-Pacific reef corals to elevated temperature, *Coral Reefs* 8 (1990) 155–162.
  - [43] C.M. Eakin, A tale of two Enso Events: carbonate budgets and the influence of two warming disturbances and intervening variability, *Uva Island, Panama, Bull. Mar. Sci.* 69 (2001) 171–186.
  - [44] Y.M. Bozec, L. Alvarez-Filip, P.J. Mumby, The dynamics of architectural complexity on coral reefs under climate change, *Glob. Change Biol.* (2014).
  - [45] N. Graham, K. Nash, The importance of structural complexity in coral reef ecosystems, *Coral Reefs* (2013) 1–12.
  - [46] B.E. Lapointe, Nutrient thresholds for bottom-up control of macroalgal blooms and coral reefs, *Limnol. Oceanogr.* 44 (1997) 1586–1592.
  - [47] E. Wolanski, R.H. Richmond, L. McCook, A model of the effects of land-based, human activities on the health of coral reefs in the Great Barrier Reef and in Fouha Bay, Guam, Micronesia, *J. Mar. Syst.* 46 (2004) 133–144.
  - [48] M.L. Baskett, A.K. Salomon, Recruitment facilitation can drive alternative states on temperate reefs, *Ecology* 91 (2010) 1763–1773.
  - [49] A. Marshall, P.J. Mumby, Revisiting the functional roles of the surgeonfish *Acanthurus nigrofuscus* and *Ctenochaetus striatus*, *Coral Reefs* 31 (2012) 1093–1101.
  - [50] M.M. Nugues, R.P.M. Bak, Differential competitive abilities between Caribbean coral species and a brown alga: a year of experiments and a long-term perspective, *Mar. Ecol. Prog. Ser.* 315 (2006) 75–86.
  - [51] J. Bascompte, C.J. Melián, E. Sala, Interaction strength combinations and the overfishing of a marine food web, *Proc. Natl. Acad. Sci. USA* 102 (2005) 5443–5447.
  - [52] D.R. Bellwood, A.S. Hoey, T.P. Hughes, Human activity selectively impacts the ecosystem roles of parrotfishes on coral reefs, *Proc. R. Soc. B: Biol. Sci.* (2011).
  - [53] M. Weijerman, E.A. Fulton, F.A. Parrish, Comparison of coral reef ecosystems along a fishing pressure gradient, *PLoS ONE* 8 (2013) e63797.
  - [54] M. Rudd, M.H. Tupper, The Impact of Nassau Grouper Size and Abundance on Scuba Diver Site Selection and MPA Economics, *Coast. Manag.* 3 (2002) 133–151.
  - [55] N. Barker, C. Roberts, Scuba diver behaviour and the management of diving impacts on coral reefs, *Biol. Conserv.* 120 (2004) 4814–489.
  - [56] I.D. Williams, Polunin NVC. Differences between protected and unprotected reefs of the western Caribbean in attributes preferred by dive tourists, *Environ. Conserv.* 27 (2000) 382–391.
  - [57] J. Wielgus, N.E. Chadwick-Furman, N. Zeitouni, M. Shechter, Effects of coral reef attribute damage on recreational welfare, *Mar. Resour. Econ.* 18 (2003) 225–238.
  - [58] S.L. Grafeld, K.L.L. Oleson, M. Barnes-Mauthe, C. Chan-Halbrendt, M. Peng, M. Weijerman, Divers' Willingness to Pay for Improved Coral Reef Conditions in Guam: An Untapped Source of Funding for Management and Conservation? (September 23, 2015). Available at SSRN: ([http://papers.ssrn.com/sol3/papers.cfm?abstract\\_id=2664405](http://papers.ssrn.com/sol3/papers.cfm?abstract_id=2664405)); 2015.
  - [59] M.G. Soricce, C.-O. Oh, R.B. Ditton, Managing scuba divers to meet ecological goals for coral reef conservation, *Ambio: A J. Hum. Environ.* 36 (2007) 316–322.
  - [60] J. Asafu-Adjaye, S. Tapsuwan, A contingent valuation study of scuba diving benefits: case study in Mu Ko Similan Marine National Park, Thailand, *Tour. Manag.* 29 (2008) 1122–1130.
  - [61] G.R. Parsons, S.M. Thur, Valuing changes in the quality of coral reef ecosystems: a stated preference study of SCUBA diving in the Bonaire National Marine Park, *Environ. Resour. Econ.* 40 (2008) 593–608.
  - [62] D.A. Gill, P.W. Schuhmann, H.A. Oxenford, Recreational diver preferences for reef fish attributes: economic implications of future change, *Ecol. Econ.* 111 (2015) 48–57.
  - [63] S.A. Berkeley, M.A. Hixon, R.J. Larson, M.S. Love, Fisheries sustainability via protection of age structure and spatial distribution of fish populations,

- Fisheries 29 (2004) 23–32.
- [64] C. Birkeland, P.K. Dayton, The importance in fishery management of leaving the big ones, *Trends Ecol. Evol.* 20 (2005) 356–358.
- [65] M.B. Mascia, C. Claus, R. Naidoo, Impacts of marine protected areas on fishing communities, *Conserv. Biol.* 24 (2010) 1424–1429.
- [66] D.M. Kotowicz, S. Allen, Guam Fishing community profile update-2013 Update; 2015.
- [67] E.A. Fulton, J.S. Link, I.C. Kaplan, M. Savina-Rolland, P. Johnson, C. Ainsworth, et al., Lessons in modelling and management of marine ecosystems: the Atlantis experience, *Fish Fish.* 12 (2011) 171–188.
- [68] J.E. Cinner, T.R. McClanahan, T.M. Daw, N.A.J. Graham, J. Maina, S.K. Wilson, et al., Linking social and ecological systems to sustain coral reef fisheries, *Curr. Biol.* 19 (2009) 206–212.
- [69] J. Shafer, Agent-Based Simulation of a Recreational Coral Reef Fishery: Linking Ecological and Social Dynamics, University of Hawaii, Honolulu, 2007.
- [70] N. Gribble, GBR-prawn: modelling ecosystem impacts of changes in fisheries management of the commercial prawn (shrimp) trawl fishery in the far northern Great Barrier Reef, *Fish. Res.* 65 (2003) 493–506.
- [71] J. Melbourne-Thomas, C.R. Johnson, P. Perez, J. Eustache, E.A. Fulton, D. Cleland, Coupling biophysical and socioeconomic models for coral reef systems in Quintana Roo, Mexican Caribbean, *Ecol. Soc.* 16 (2011) 23.
- [72] T.R. McClanahan, J.E. Cinner, A framework for adaptive gear and ecosystem-based management in the artisanal coral reef fishery of Papua New Guinea, *Aquat. Conserv.: Mar. Freshw. Ecosyst.* 18 (2008) 493–507.
- [73] T.J. Emery, B.S. Green, C. Gardner, J. Tisdell, Are input controls required in individual transferable quota fisheries to address ecosystem based fisheries management objectives? *Mar. Policy* 36 (2012) 122–131.
- [74] J.E. Cinner, T.R. McClanahan, M.A. MacNeil, N.A. Graham, T.M. Daw, A. Mukminin, et al., Comanagement of coral reef social-ecological systems, *Proc. Natl. Acad. Sci.* 109 (2012) 5219–5222.
- [75] I. van Putten, A. Lalancette, P. Bayliss, D. Dennis, T. Hutton, A. Norman-López, et al., A Bayesian model of factors influencing indigenous participation in the Torres Strait tropical rocklobster fishery, *Mar. Policy* 37 (2013) 96–105.

## APPENDICES

### Appendix A. List of participating organizations in the workshop and meetings conducted in Guam in 2011 and 2014

Organization
NOAA Fisheries Pacific Islands Regional Office (PIRO)
NOAA Pacific Islands Fisheries Science Center (PIFSC)
NOAA Coral Reef Conservation Program (CRCP)
NOAA-PIFSC – Coral Reef Ecosystem Division
JIMAR - University of Hawai'i
POC Coral Reef Conservation, Western Pacific Fishery Management Council, Director of Dept. of Chamorro Affairs
Guam Coastal Management Program (GCMP)
Guam Department of Agriculture
University of Guam Marine Laboratory
Humatak Community Foundation
Guam Preservation Trust
Naval Facility Andersen Air Force Base (AAFB)
USDA Natural Resource Conservation Service
War in the Pacific National Park (NPS)
Guam Environmental Protection Agency

**Appendix B. Description of nodes in dive tourism behavior map. Starred (\*) nodes connect directly to the ecological model.**

<b>Node</b>	<b>Description of node</b>
Wreck diving	The presence or absence of a wreck at a dive site. Guam has several historic wrecks in Apra Harbor which are popular dive locations
Quality of the dive experience	The combination of ecological and situational variables that influence overall satisfaction
Previous dive experience	The total number of dives an individual has previously completed
Cost of dive charter	The price paid to participate in a dive
Tourist visitation numbers	The number of tourists visiting the island
Tourist country of origin	Tourists from different countries do not all have the same preferences
Age group	The age of an individual (in years)
Price of accommodation	Price paid for hotel accommodations can vary throughout the year
Charismatic species*	The presence or absence of charismatic species, such as, bumpead parrotfish, Napoleon wrasse, sharks, turtles
Coral cover*	The average of coral cover in the entire model domain
Species abundance*	Species abundance is the standing stock biomass of the main species that comprise the fishery target groups such as jacks, parrotfish, groupers, surgeonfish, goatfish, invertebrates (e.g. lobster) and non-target groups. The standing stock biomass changes over time due to habitat degradation and extraction.
Clarity of the water	Sediments and algal blooms can reduce the clarity of the water, and thus visibility.

Tourist season	Peak season is January to May; Off season is July to November; June and December are shoulder months.
Flight availability	The number of flights arriving in Guam per month
Access to diving locations	Access to coastline areas and potential dive sites is restricted by the natural features of the coastline in Guam, ocean and weather conditions, and military/security access controls.
Watershed condition	A description of the watershed as degraded or not. Degraded watersheds are assumed to have the same run off of sediments and nutrients as present conditions. When watersheds are restored, we assume no additional sediment and nutrient inputs.
Marine preserves	Guam has 5 marine preserves: Tumon Bay MP, Piti Bomb Holes MP, Pati Point MP, Sasa Bay MP, and Achang MP. There are specific rules regulating fishing and other activities for each one. They cover approximately 16.3% of Guam's coral reef habitat from 0 to 30-m depth.
Ocean and weather conditions	Ocean and weather conditions that may change on a daily or seasonal basis, such as wind speed and direction, wave height, tides, and visibility; Waters in some areas around the island are too rough for diving during much of the year.
Coastal features	Access to coastline areas and potential dive sites is restricted by the natural features of the coastline in Guam.
Access areas closed by military	Areas of the shoreline, territorial waters (out to 3 nm), and federal waters (3 - 200 nm) that are closed to fishing activities by the U.S. military and/or territorial and federal security agencies (e.g., the U.S. Department of Homeland Security).
Enforcement of marine preserves	The effectiveness of enforcement of rules regulating fishing and boating activities.



**Appendix C. Description of connection between nodes of dive tourism behavior map**

<b>Variable A</b>	<b>Variable B</b>	<b>Connection between variables</b>	<b>Reference</b>
Enforcement	Marine preserves	The effectiveness of enforcement can be determined if dive charters respect and observe the rules regulating fishing and other activities within the marine preserves.	Expert opinion
Marine preserves	Species abundance	The establishment (and enforcement) of marine preserves may influence the overall abundance of species and in particular in species that complete their life cycle within the marine preserve boundaries. Moreover, spillover effects may lead to a greater biomass or fish abundance of species just outside of the marine preserve boundaries.	Tupper 2007
Marine preserves	Charismatic species	The establishment (and enforcement) of marine preserves influences the overall abundance of charismatic species and in particular in species that complete their life cycle within the marine preserve boundaries.	Tupper 2007
Marine preserves	Coral cover	There is little evidence that marine preserves increase coral cover, as coral cover increase is related to herbivore biomass. However, herbivore biomass increases within marine preserves.	Gilmour et al. 2013
Watershed conditions	Turbidity	Different types of land use will have a different effect on runoff and thus ocean turbidity. Turbidity created by different land uses can be a problem in some areas of Guam. If the watershed is in good condition this will decrease runoff and thus turbidity.	Burdick et al. 2008
Oceans and weather conditions	Turbidity	Windy and stormy conditions can increase ocean turbidity.	Wolanski et al. 2003

Oceans and weather conditions	Access to diving locations	Changes in ocean and weather conditions occur on a daily basis. Some weather conditions will not allow dive activities to take place. In addition, near shore waters on the east side of the island are too rough for diving.	Expert opinion
Coastline features	Access to diving locations	Cliff lines make up a significant portion of the coastline and prevent coastal access for dive charters, particularly on the east side. The most popular dive destinations are on the west side of the island due to the presence of fringing reefs and bays and are accessible for dive charter for most of the year.	<a href="http://www.mdaguam.com/content/guam-beach-dives">http://www.mdaguam.com/content/guam-beach-dives</a>
Areas closed by military	Access to diving locations	Military areas are off limits and no access can be gained for dive charters. Further, construction in preparation for the military buildup has also inhibited access to municipal boat ramps, limiting the number of boat access points.	Expert opinion
Access to diving locations	Cost of dive charter	Decreased access to dive grounds from the shoreline can increase the distance boats need to travel, in turn, increases fuel use. With higher fuel prices are likely to be passed on to the customers.	Expert opinion
Tourist season	Cost of dive charter	In peak tourist season the cost of dive charters is higher as demand for charters is relatively higher.	Expert opinion
Tourist season	Price of accommodation	In the peak tourist season the price of accommodation is higher.	Expert opinion
Tourist season	Flight availability	In peak seasons there are more flights available to bring tourists to Guam.	Expert opinion
Price of accommodation	Tourist visitation numbers	If prices of accommodation are comparatively high this means that tourism visitation is likely to be negatively affected.	Expert opinion
Flight	Tourist	If more flights are available this is likely to increase the	Expert opinion

availability	visitation numbers	number of tourist visiting Guam.	
Flight availability	Tourist country of origin	There are more flights to Guam from some countries thus influencing the country of origin of the tourists.	Expert opinion
Wreck diving	Participation in dive trips	There are a number of popular wreck dives with historical significance in Apra Harbor, so the presence/absence of a wreck could also influence participation in dive trips.	<a href="http://www.nps.gov/submerged/Parks/WAPA.html">http://www.nps.gov/submerged/Parks/WAPA.html</a>
Tourist visitation numbers	Participation in dive trips	With higher tourist number the demand for dive trips is also likely to increase.	Expert opinion
Cost of dive charter	Participation in dive trips	More expensive dive trip costs is likely to negatively affect participation in dive trips.	Rudd and Tupper 2002
Previous dive experience	Participation in dive trips	People with previous dive experience are more likely to participate in new dive experiences and partake in dive trips on their holidays.	Expert opinion
Age	Previous dive experience	Age group influences previous dive experience with older divers generally having completed more dives.	S. Grafeld unpublished data
Quality of the dive experience	Participation in dive trips	Positive dive experiences will mean that it is more likely that the tourist will participate in a dive trip.	Expert opinion
Size of dive group	Quality of the dive experience	Previous studies have included the size of the group on a dive charter as a measure of the quality of the dive experience (with a higher WTP for smaller groups).	Rudd and Tupper 2002, Schuhmann et al. 2013
Charismatic species	Quality of the dive experience	Charismatic species are important contributors to a dive experience. Some divers will value the sighting of charismatic species most as part of the dive trip.	\$5.40 more/dive to see more Napoleon wrasse S. Grafeld unpublished data

Coral cover	Quality of the dive experience	The condition and extent of coral cover will increase the aesthetic quality of the reef and thus increase the quality of the dive experience.	Parsons and Thur 2008
Species abundance	Quality of the dive experience	The more species are visible and present on a dive – the more divers are likely to enjoy the experience.	\$6.45 more/dive for a change from low to high fish biomass \$6.23 more/dive for a change from low to high fish species diversity S. Grafeld unpublished data
Turbidity	Quality of the dive experience	If turbidity is high- visibility is low and likely to decrease the quality of the dive experience.	\$10 on average (+/- \$5) towards sediment reduction projects S. Grafeld unpublished data
Tourist country of origin	Tourist visitation numbers	There are more tourists from some countries than others (i.e. Japanese tourists make up the largest group).	<a href="https://www.fhb.com/en/assets/File/Marketing/FHB_2013-14_GuamEconForecast.pdf">https://www.fhb.com/en/assets/File/Marketing/FHB_2013-14_GuamEconForecast.pdf</a>

**Appendix D. Description of nodes in the fishery behavior map. Starred (\*) node connects to ecological model.**

<b>Node</b>	<b>Description of node</b>
Enforcement	The effectiveness of enforcement of rules regulating fishing and boating activities.
Areas closed by military/security	Areas of the shoreline, territorial waters (out to 3 nm), and federal waters (3 - 200 nm) that are closed to fishing activities by the U.S. military and/or territorial and federal security agencies (e.g., the U.S. Department of Homeland Security).
Ocean and weather conditions	Ocean and weather conditions that may change on a daily or seasonal basis, such as wind speed and direction, wave height, tides, and visibility; waters in some areas around the island are too rough for fishing from small boats during much of the year.
Coastline features	Access to coastline areas and nearshore fishing areas is restricted by the natural features of the coastline of Guam.
Access to shoreline and fishing grounds	Whether or not fishers can enter and/or utilize coastal and marine areas for fishing activities. Types of areas include coastal access roads, beaches, boat ramps, docks/piers, and marine areas.
Tourist season	Peak season is January to May; Off season is July to November; June and December are shoulder months.
Price of fish	The price for which fish are bought and sold on Guam. This depends on several factors, including seasonal availability of fish, time of year/tourist season, and outlet to which fish is being sold (Guam Fishermen's Co-op versus restaurants versus other markets).
Fuel cost	The cost of fuel used to run marine vessels. This is the main operating cost incurred in boat-based fishing on Guam.
Employment opportunities	1) Whether or not fishers earn income from non-fishing employment, 2) Whether or not that employment provides them with money beyond what is needed to meet regular expenses, allowing them to have "free time" and extra income.
Age	Age of fisher (in years)
Gender	Gender of fisher
Fishing tradition	Whether or not one comes from a "fishing family"; whether one's family members (especially older family members) are fishers.

Node	Description of node
Ethnicity	Ethnicity of fishers; people of some ethnicities are more likely to be engaged in fishing in Guam.
Species abundance	Species abundance is the standing stock biomass of the main species that comprise the fishery target groups such as jacks, parrotfish, groupers, surgeonfish, goatfish, invertebrates (e.g. lobster) and others. The standing stock biomass changes over time due to habitat degradation and extraction.
Participation in reef fishing	Any activity that involves the collection of reef species. On Guam, this includes commercial fishing and non-commercial fishing. Fishers often use multiple fishing gears and target multiple marine species during a single fishing trip. Fish may be used for subsistence, given away, or sold depending on a variety of trip-based factors. When and where one fishes, which methods are used, and which species are targeted depends on several factors, including the experience level of fishers and access to resources required to fish (e.g., boat, gear, fuel).

**Appendix E. Description of connections between nodes in the fishery behavior map. Starred (\*) node connects to ecological model.**

<b>Variable A</b>	<b>Variable B</b>	<b>Connection between variables</b>	<b>Reference</b>
Enforcement	Management scenarios	The effectiveness of enforcement can determine if fishers respect and observe the rules regulating fishing activities.	Charles et al. 1999, Sutinen and Kuperan 1999, Hatcher et al. 2000
Management scenarios	Species abundance	Different management scenarios will affect species abundance in different ways. For example, the existence (and enforcement) of marine preserves may influence the overall abundance of species, particularly for species that complete their life cycle within the marine preserve boundaries. Or, size-based controls on species influence the overall abundance of those species by limiting the fish allowed to be landed to those of a specific size. With a build-up of larger (older) individuals larval quality and survivorship increases. Leaving the small, immature fish will increase the spawning biomass.	Berkeley et al. 2004, Birkeland and Dayton 2005, Taylor et al. 2012, Williams et al. 2012
Management scenarios	Access to shoreline and fishing grounds	Some management scenarios (such as the existence/expansion of MPs) may prevent fishers from accessing certain shoreline and nearshore areas, sometimes restricting access to common or traditional fishing grounds.	Expert opinion and personal observation
Areas closed by military/security	Access to shoreline and fishing grounds	These kinds of closed areas limit the ability of fishers to access and fish within fishing grounds. Further, construction in preparation for the military buildup has also inhibited access to municipal boat ramps, restricting boat access to nearshore fishing grounds and fewer access points. Fishers have to make longer boat trips to get to their fishing locations.	Expert opinion and personal observation
Ocean and	Access to	Changes in ocean and weather conditions occur on a daily and	Expert opinion

Variable A	Variable B	Connection between variables	Reference
weather conditions	shoreline and fishing grounds	seasonal basis and contribute to fishers' decisions regarding whether to go fishing and where they will fish. Some nearshore waters on the east side of the island are too rough for fishing from small boats for approximately 9 months of the year, on average.	
Coastline features	Access to shoreline and fishing grounds	Coastline features determine the extent of coastal access for fishers. For example, cliff lines make up a significant portion of the coastline and prevent access to adjacent fishing grounds.	Allen and Bartram 2008
Access to shoreline and fishing grounds	Fuel cost	Decreased access to shoreline and fishing grounds can increase the distance boats need to travel to preferred fishing grounds; this, in turn, increases fuel use. With higher fuel prices, the cost to travel further distances increases. Fuel is the main operating cost incurred in fishing on Guam. Increased fuel costs influence where and how often fishermen decide to fish.	Hospital and Beavers 2012 Expert opinion
Access to shoreline and fishing grounds	Participation in reef fishing	Access to fishing grounds can affect fishers' decision to fish via expectations for: financial profit, catching fish as food, and/or passing on fishing tradition. Additionally, access affects decisions regarding when and where to fish, which gear to use, and which species to target. Further, restrictions to access may focus fishing in smaller areas, encouraging competition and local depletion in remaining open areas.	Halpern et al. 2004, Allen and Bartram 2008
Tourist season	Price of fish	Tourist season affects the price of fish because prices tend to be higher during high season when the demand is high for certain species.	Expert opinion



Variable A	Variable B	Connection between variables	Reference
Price of fish	Participation in reef fishing	The current price of fish may determine: 1) whether one decides to go fishing or not, 2) the fishing method used (including location, gear used, and species targeted), and 3) what is done with the catch once landed (kept for household consumption, given away/shared, sold).	Expert opinion
Employment opportunities	Participation in reef fishing	Fishing activities can be affected by: 1) whether or not fishers earn income from non-fishing employment, and 2) whether or not that employment provides them with money above and beyond what is needed to meet regular expenses. Fishers who hold jobs that provide them with extra income, and who have "free time," are able to buy and maintain a fishing boat and fishing gear, and afford the expenses of fishing trips. The fish they catch may be used for household consumption, given away, or sold for extra income to recoup fishing trip costs. On the other hand, fishers who do not earn sufficient income from non-fishing employment may have a greater incentive to fish to provide food for their households.	Expert opinion
Fuel cost	Participation in reef fishing	Fuel is the main operating cost incurred in boat fishing on Guam. As fuel prices increase, less of the fuel cost is recovered either when selling fish or when used as food. Above some price for fuel, fishers may decide not to go out fishing because it is not worth the investment in fuel. Therefore, increased fuel costs influence where and how often fishers decide to fish, which gear to use, and which species to target.	Hospital and Beavers 2012
Age	Participation in reef fishing	In general, younger people are more likely to fish than older people, especially physically-demanding activities such as spear fishing.	Expert opinion

Variable A	Variable B	Connection between variables	Reference
Gender	Participation in reef fishing	Men are much more likely to fish than women.	Expert opinion and personal observation
Fishing tradition	Participation in reef fishing	Individuals are more likely to fish if they come from a "fishing family," and/or if other members of their families are fishers.	Expert opinion
Ethnicity	Participation in reef fishing	Individuals are more likely to fish if their ethnicity has been historically engaged in fishing.	Allen and Bartram 2008
Species abundance*	Participation in reef fishing	The overall abundance of marine species may determine: 1) whether one decides to go fishing or not, 2) the fishing method used (including location, gear used, and species targeted), and 3) what is done with the catch once landed (kept for household consumption, given away/shared, sold).	Expert opinion

## References from Appendices

- Allen, S. and P. Bartram. 2008. Guam as a fishing community. Pacific Islands Fish.Sci. Cent. , Pacific Islands Fis. Sci. Cent., NMFS, NOAA, Honolulu HI 96822-2396.
- Berkeley, S. A., M. A. Hixon, R. J. Larson, and M. S. Love. 2004. Fisheries sustainability via protection of age structure and spatial distribution of fish populations. *FISHERIES* **29**:23-32.
- Birkeland, C. and P. K. Dayton. 2005. The importance in fishery management of leaving the big ones. *Trends in Ecology & Evolution* **20**:356-358.
- Burdick, D., V. Brown, J. Asher, M. Caballes, M. Gawel, L. Goldman, A. Hall, J. Kenyon, T. Leberer, E. Lundblad, J. McIlwain, J. Miller, D. Minton, M. Nadon, N. Pioppi, L. Raymundo, B. Richards, R. Schroeder, P. Schupp, E. Smith, and B. Zgliczynski. 2008. Status of coral reef ecosystems of Guam. Bureau of Statistics and Plans, Guam Coastal Management Program, Guam.
- Charles, A. T., R. L. Mazany, and M. L. Cross. 1999. The economics of illegal fishing: a behavioral model. *Marine Resource Economics* **14**:95-110.
- Gilmour, J. P., L. D. Smith, A. J. Heyward, A. H. Baird, and M. S. Pratchett. 2013. Recovery of an isolated coral reef system following severe disturbance. *Science* **340**:69-71.
- Halpern, B. S., S. D. Gaines, and R. R. Warner. 2004. Confounding effects of the export of production and the displacement of fishing effort from marine reserves. *Ecological Applications* **14**:1248-1256.
- Hatcher, A., S. Jaffry, O. Thébaud, and E. Bennett. 2000. Normative and social influences affecting compliance with fishery regulations. *Land Economics*:448-461.
- Hospital, J. and S. Beavers. 2012. Economic and social characteristics of Guam's small boat fisheries. Page 60p + Appendices. Pacific Islands Fish. Sci. Cent., Natl. Mar. Fish. Serv., NOAA, Honolulu.
- Parsons, G. R. and S. M. Thur. 2008. Valuing changes in the quality of coral reef ecosystems: a stated preference study of SCUBA diving in the Bonaire National Marine Park. *Environmental and Resource Economics* **40**:593-608.
- Rudd, M. and M. H. Tupper. 2002. The Impact of Nassau Grouper Size and Abundance on Scuba Diver Site Selection and MPA Economics. *Coastal Management* **3**:133-151.
- Schuhmann, P. W., J. F. Casey, J. A. Horrocks, and H. A. Oxenford. 2013. Recreational SCUBA divers' willingness to pay for marine biodiversity in Barbados. *Journal of Environmental Management* **121**:29-36.
- Sutinen, J. G. and K. Kuperan. 1999. A socio-economic theory of regulatory compliance. *International journal of social economics* **26**:174-193.
- Taylor, B. M., J. L. McIlwain, and A. M. Kerr. 2012. Marine reserves and reproductive biomass: A case study of a heavily targeted reef fish. *PLoS ONE* **7**:e39599.
- Tupper, M. 2007. Identification of nursery habitats for commercially valuable humphead wrasse *Cheilinus undulatus* and large groupers (Pisces: Serranidae) in Palau. *Marine Ecology Progress Series* **332**:189-199.
- Williams, I., J. Zamzow, K. Lino, M. Ferguson, and E. Donham. 2012. Status of coral reef fish assemblages and benthic condition around Guam: A report based on underwater visual surveys in Guam and the Mariana Archipelago, April-June 2011. U.S. Dep Commer, NOAA Tech. Memo., NOAA-TM-NMFS-PIFSC-33.
- Wolanski, E., R. H. Richmond, G. Davis, and V. Bonito. 2003. Water and fine sediment dynamics in transient river plumes in a small, reef-fringed bay, Guam. *Estuarine, coastal and shelf science* **56**:1029-1040.