



van Heck, H. J., Davies, J. H., Elliott, T., & Porcelli, D. (2016). Global scale modeling of melting and isotopic evolution of Earth's mantle: melting modules for TERRA. *Geoscience Model Development*, 9, 1399-1411. 10.5194/gmd-9-1399-2016

Publisher's PDF, also known as Final Published Version

Link to published version (if available):
[10.5194/gmd-9-1399-2016](https://doi.org/10.5194/gmd-9-1399-2016)

[Link to publication record in Explore Bristol Research](#)
PDF-document

University of Bristol - Explore Bristol Research

General rights

This document is made available in accordance with publisher policies. Please cite only the published version using the reference above. Full terms of use are available:
<http://www.bristol.ac.uk/pure/about/ebr-terms.html>

Take down policy

Explore Bristol Research is a digital archive and the intention is that deposited content should not be removed. However, if you believe that this version of the work breaches copyright law please contact open-access@bristol.ac.uk and include the following information in your message:

- Your contact details
- Bibliographic details for the item, including a URL
- An outline of the nature of the complaint

On receipt of your message the Open Access Team will immediately investigate your claim, make an initial judgement of the validity of the claim and, where appropriate, withdraw the item in question from public view.



Global-scale modelling of melting and isotopic evolution of Earth's mantle: melting modules for TERRA

Hein J. van Heck^{1,2}, J. Huw Davies¹, Tim Elliott³, and Don Porcelli⁴

¹School of Earth and Ocean Sciences, Cardiff University, Main Building, Park Place, Cardiff, CF10 3AT, Wales, UK

²Institute of Earth Sciences, Utrecht University, Budapestlaan 4, 3584 CD Utrecht, the Netherlands

³Department of Earth Sciences, University of Bristol, Wills Memorial Building, Queen's Road, Bristol BS8 1RJ, UK

⁴Department of Earth Sciences, University of Oxford, South Parks Road, Oxford OX1 3AN, UK

Correspondence to: Hein J. van Heck (vanheckhj@cardiff.ac.uk)

Received: 21 August 2015 – Published in Geosci. Model Dev. Discuss.: 3 November 2015

Revised: 25 February 2016 – Accepted: 10 March 2016 – Published: 14 April 2016

Abstract. Many outstanding problems in solid-Earth science relate to the geodynamical explanation of geochemical observations. Currently, extensive geochemical databases of surface observations exist, but satisfying explanations of underlying mantle processes are lacking. One way to address these problems is through numerical modelling of mantle convection while tracking chemical information throughout the convective mantle.

We have implemented a new way to track both bulk compositions and concentrations of trace elements in a finite-element mantle convection code. Our approach is to track bulk compositions and trace element abundances via particles. One value on each particle represents bulk composition and can be interpreted as the basalt component. In our model, chemical fractionation of bulk composition and trace elements happens at self-consistent, evolving melting zones. Melting is defined via a composition-dependent solidus, such that the amount of melt generated depends on pressure, temperature and bulk composition of each particle. A novel aspect is that we do not move particles that undergo melting; instead we transfer the chemical information carried by the particle to other particles. Molten material is instantaneously transported to the surface layer, thereby increasing the basalt component carried by the particles close to the surface and decreasing the basalt component in the residue.

The model is set to explore a number of radiogenic isotopic systems, but as an example here the trace elements we choose to follow are the Pb isotopes and their radioactive parents. For these calculations we will show (1) the evolution of the distribution of bulk compositions over time, showing the

buildup of oceanic crust (via melting-induced chemical separation in bulk composition), i.e. a basalt-rich layer at the surface, and the transportation of these chemical heterogeneities through the deep mantle; (2) the amount of melt generated over time; (3) the evolution of the concentrations and abundances of different isotopes of the trace elements (U, Th, K and Pb) throughout the mantle; and (4) a comparison to a semi-analytical theory relating observed arrays of correlated Pb isotope compositions to melting age distributions (Rudge, 2006).

1 Introduction

A big question in solid-Earth sciences is, what are the interior dynamics of the mantle? A related question that might help to find answers is, what processes are responsible for the geochemical heterogeneity observed in magmatic outputs (recorded in databases, e.g. Lehnert et al., 2000). Some aspects of the geochemical observations are constraints on mantle dynamics, because the dynamics are partly responsible for the heterogeneity in geochemical observations. Therefore progress can be made by introducing geochemistry to (numerical) mantle convection models (as in Christensen and Hofmann, 1994; van Keken and Ballentine, 1998; Xie and Tackley, 2004a; Huang and Davies, 2007b; Brandenburg et al., 2008).

In the Earth's mantle, chemical heterogeneities in bulk composition and trace element concentration and isotope composition are continuously created by melting. Oceanic

crust is produced by partial melting at oceanic spreading centres where most mantle melting occurs, and also where most chemical heterogeneity is generated. This heterogeneous material is brought into the deeper mantle via subduction of oceanic lithosphere. Here it mixes. To a lesser extent, melting also happens on continents and beneath oceanic lithosphere to create ocean island basalts (OIBs), providing a second mechanism for creating heterogeneity. In addition to this continuous generation of heterogeneities, chemically distinct material might have survived for billions of years, originating much earlier in Earth history, e.g. linked to core formation processes, mantle magma oceans, or asteroid bombardment. This makes melting a first-order feature to be implemented in thermo-chemical convection codes.

Numerical mantle convection codes have been developed that are capable of tracking chemical heterogeneities (for an overview see Tackley, 2007). Although different techniques each have advantages (level set – Samuel and Evonuk, 2010; field tracking – Davies et al., 2007; and marker-net based method – Oldham and Davies, 2004), particle-based methods have proven to be most useful for systems that involve strong mixing, e.g. the Earth's mantle evolving over billions of years.

In this paper, we will deal with global-scale convection, melting, and the tracking of heterogeneities resulting from melting. Christensen and Hofmann (1994) were the first to demonstrate a method to track the evolution of recycled oceanic crust and its influence on the chemistry of the mantle. After that study was published, many followed a similar approach, either tracking preset heterogeneities (e.g. Davies, 2002; Zhong and Hager, 2003; Nakagawa and Tackley, 2004), or having the chemical heterogeneities emerge via melting during the calculation at fixed melting zones (Walzer and Hendel, 1999; Davies, 2002; Huang and Davies, 2007a, b, c), moving melting zones that follow force-balanced plates or imposed plate motions (Brandenburg and van Keken, 2007a, b; Brandenburg et al., 2008), or freely moving melting location via a melting phase diagram (De Smet et al., 1998; Van Thienen et al., 2004; Xie and Tackley, 2004a, b; Nakagawa et al., 2009, 2010).

In addition to tracking of bulk compositions, it is also possible to track the distribution and evolution of trace element abundances. Of particular interest are both parent and daughter isotopes of radiogenic systems. Since the radiogenic parents decay in a very predictable manner (following known decay constants), their relative abundances compared to their daughter isotopes can be used as clocks. Different elements behave differently during partial melting (via different partition coefficients), so when the techniques of tracking and melting are implemented, the system of segregation and decay can be tracked. We follow the well-studied uranium–thorium–lead system (U–Th–Pb), as has previously been done in a similar way in Christensen and Hofmann (1994), Xie and Tackley (2004a) and Brandenburg et al. (2008).

For purely thermal convection, numerous analytical solutions exist which can be used to benchmark numerical codes (for example Rayleigh–Taylor instabilities, Nu–Ra scalings, corner flow). In this way, numerical codes can be checked for accuracy for simple set-ups and then used to study more complicated scenarios. For thermo-chemical convection on the other hand, very few analytical solutions exist. This makes the benchmarking of thermo-chemical convection difficult. There is one semi-analytical theory available for the evolution of Pb isotopes in the mantle (Rudge, 2006). We will use this theory and compare its predictions to the outcome of newly performed numerical calculations.

We present the details of a newly implemented method of melt and chemical heterogeneity tracking in a global-scale convection code. We will show a good fit of our model data to the analytical prediction of Pb isochron ages as a function of melting age distribution functions (Rudge, 2006). Through this we validate our implementation.

2 Methods

In this section we first describe the numerical code and calculation set-up before presenting more details about using particles to track bulk and trace element compositions. Then we move on to describe the implementation of melting, including changes in mantle bulk compositions and fractionation of trace elements. We conclude this section by providing some details about the initial set-up of the trace elements, as done for the calculation presented.

2.1 Numerical mantle convection simulations

We use TERRA, a parallel, well-established, benchmarked, spherical convection code (Baumgardner, 1985; Bunge and Baumgardner, 1995; Yang and Baumgardner, 2000; Stegman et al., 2002, 2003; Köstler, 2011; Davies et al., 2013). The grid covers the full 3-D spherical shell. At each radial layer the grid is a regular subdivision of an icosahedron (Baumgardner and Frederickson, 1985).

Assuming incompressibility and the Boussinesq approximation, the equations for convective flow in the mantle can be expressed non-dimensionally as

$$\nabla \cdot \mathbf{u} = 0, \quad (1)$$

$$\nabla \cdot (\mu(u_{i,j} + u_{j,i})) - \nabla p = RaT\hat{e}, \quad (2)$$

$$\frac{\partial T}{\partial t} + \nabla \cdot (T\mathbf{u}) = \nabla^2 T + H', \quad (3)$$

$$\frac{\partial C}{\partial t} = -\nabla \cdot (C\mathbf{u}), \quad (4)$$

where length is non-dimensionalised by D the depth of the mantle; time is non-dimensionalised by $D^2 \kappa^{-1}$ (κ the thermal diffusivity), and temperature by ΔT the temperature drop across the domain.

Table 1. Calculation parameters.

Parameter	Symbol	Value
Radial resolution		22 km
Surface temperature		300 K
CMB temperature		3000 K
Internal heating		$4 \times 10^{-12} \text{ W kg}^{-1}$
Upper mantle viscosity		$3 \times 10^{21} \text{ Pa s}$
Thermal diffusivity	κ	$8.9 \times 10^{-7} \text{ m}^2 \text{ s}^{-1}$
Reference density	ρ	$4.5 \times 10^3 \text{ kg m}^{-3}$
Gravity acceleration	g	10 m s^{-2}
Thermal expansivity	α	$2.5 \times 10^{-5} \text{ K}^{-1}$
Specific heat	c_p	$1 \times 10^3 \text{ J K}^{-1} \text{ kg}^{-1}$

The other variables and parameters are u , velocity; μ , dynamic viscosity; p , pressure; T , temperature; \hat{e} , the radial unit vector; Ra , the Rayleigh number ($= \frac{\alpha \rho g \Delta T D^3}{\mu \kappa}$; α , thermal expansion; ρ , reference density; g , gravity acceleration); and t , time; H' is the non-dimensional internal heating, equal to $\frac{H}{\rho c_p}$, where H is the heat generation rate per unit volume and c_p is the specific heat at constant pressure. Material movement is driven by buoyancy forces resulting from horizontal differences in density as expressed in the momentum equation (Eq. 2). Temperature is advected with the material flow, diffuses and is produced internally as described by Eq. (3); Eq. (3) describes the advection of temperature with the material flow, and its diffusion, and the heat produced internally, while Eq. (1) is the continuity equation which ensures conservation of mass. Equation (4) describes the (passive) advection of bulk composition (C). Equations (1) and (2) are solved using finite elements, Eq. (3) is solved via a finite-volume method, and Eq. (4) is solved via particle tracking (Runge–Kutta).

2.2 Calculation set-up

Resolution was chosen such that radial resolution was ~ 22 km. Lateral resolution was ~ 28 km at the surface, increasing towards ~ 15 km at the core–mantle boundary (CMB). Top and bottom boundaries were impermeable, free slip and isothermal. Internal heating was uniform and constant over time. We used a layered viscosity profile, where viscosity increased by a factor of 30 at a depth of 660 km. Dimensional values used are listed in Table 1. To generate a stable initial condition, we performed a pre-run, using all the same parameters but without tracking bulk and trace element composition. This pre-run generated a steady flow field and matching temperature distribution.

To mimic most of Earth's evolution, we ran the calculation over a time corresponding to several billions of years. The calculation started at a time 3.6 Ga and ran forward until present day. By doing so, we skip the first billion years (BY) of the Earth's evolution. This is done because, in Earth's

early evolution, mantle temperatures were most likely higher than they are at present, leading to lower viscosity and higher vigour in the convection. Numerically this type of convection would be harder to solve for accurately. Moreover, the style of convection, and so whether or not it can be treated using the same sort of model, is also uncertain. We note that the viscosity is not temperature-dependent in the actual simple case presented here, and so the starting time could be older.

2.3 Particles and bulk composition

We use particles for tracking chemical information and thus for dealing with melting. A schematic illustration of how this works is given in Fig. 1. The particles are advected using a second-order Runge–Kutta advection scheme. Each particle is linked to an array to carry the particle information. Three values are used to indicate the particles position; one to indicate the mass that the particle represents; one to track at what time the particle last produced or received melt; one to track the bulk composition; and one for the abundance of each isotope which is tracked in the system. When using the set-up presented in this paper, that means that each particle is linked to an array with 13 numbers. The mass that a particle represents is attributed at initialisation as the volume of the node, multiplied by the density, divided by the number of particles attributed to that node. After initialisation, the mass a particle represents is only changed when the particle is split, or merged with another particle (i.e. for numerical, not physical, reasons; see Sect. 2.4 for more details). Bulk composition is tracked by a single number (C value) for each particle. The C value can vary between 0 and 1. Zero we interpret to mean effectively completely infertile (in basalt), and 1 to mean completely fertile (in basalt). We use a simple set-up in the actual test that we present, described in the section above. This includes on initialisation giving all particles a value of 0.6, representing a homogeneous, partly fertile mantle.

2.4 Splitting and merging

In order to keep proper coverage of particles throughout the mantle, we sometimes need to split and merge particles. Particles were split whenever less than a threshold number of particles were present in a grid cell. The threshold for the calculations presented here was three. All particles in such cells are split in half, creating two new particles, each representing half the original mass. One particle copies the position of the old particle, while the other is placed in the same grid cell, mirrored over the z axis. Each new particle receives half of the atoms of each isotope the old particle was carrying, while bulk composition and melting time are simply copied.

Merging of particles is needed sometimes as well. The threshold number of particles required in a grid cell before merging was undertaken can again be varied and was set at 35 in the calculations presented here. When two particles merge, their mass and isotopes are simply summed. Which

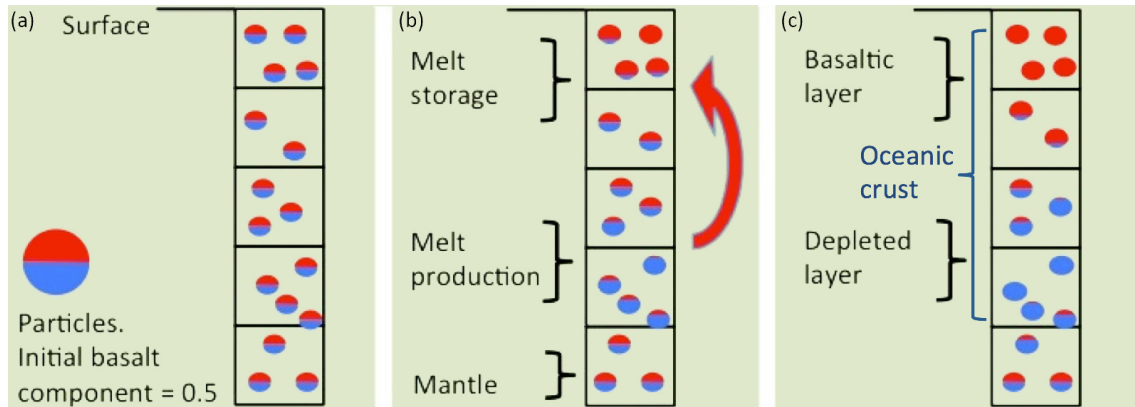


Figure 1. Schematic illustration of the use of particles in the transport of bulk composition on melting. Five grid elements just below the surface are schematically drawn (black squares), with the circles in them representing the particles. The basaltic component each particle is carrying is indicated by the red coloured area. A red particle is completely basaltic ($C = 1$), whereas a blue particle is completely depleted ($C = 0$). Note that only a few particles per grid element are drawn, while our model uses up to 35 particles per grid element. Time progresses from left to right, i.e. (a) to (c). (a) Situation before melting. All particles indicated have a basaltic component of 0.5 (50%). (b) Movement of melt. The particles around the third grid element from the top start to produce melt. They thereby decrease their basaltic component (formation of residue) and send the produced basalt to particles closer to the surface (indicated by the red arrow). The particles closer to the surface increase their basaltic component as a result of receiving melt. (c) Result after some time. The particles at the layer closest to the surface received so much melt that they have become completely basaltic, and the second layer from the top start to become more basaltic as well. The area below, where melt has been produced, now forms a layer of depleted material. In this diagram the particles have not been moved. In the model the particles are advected by mantle flow.

two particles are merged is determined by their location in the array allocated to the node, so effectively they are selected at random. The position of the new particles is the average location determined by weighting the old positions according to the particle masses. The bulk composition is also the mass-weighted average of the two original compositions. The melting time of the new particle is copied from one of the old particles picked at random. We note that these rules for splitting and merging particles conserve the global bulk composition, mass and isotope abundances.

2.5 Melting

We now describe the melting algorithm starting with an overview. The melting algorithm is implemented on particles whose temperature exceeds their solidus. The amount of melt and its content of trace elements are calculated for each such particle. This information is then passed to near-surface particles conserving energy, mass, bulk composition and atoms of trace elements. Note that, in contrast to many other implementations, the melting particles are not moved as part of the melting event. We next describe the general assumptions underlying our algorithm and then describe the specific choices and give more details.

Our melting relationships follow from three assumptions. The first assumption is that the proportion of fusible (or basaltic) material in a particle can be represented by a compositional parameter C . Following a melting event, all or part of this fusible component is removed from the melt-

producing particle, thereby depleting it. The degree of melting, F , is given directly by the change in composition C as follows:

$$F = C_o - C_n, \quad (5)$$

where C_n is the new bulk composition and C_o is the previous bulk composition, as recorded at the particle.

The second assumption is that the solidus is dependent on the compositional parameter, C , i.e. $T_s = f(C)$, where T_s is the solidus temperature and $f(C)$ is a function of C . Physically the function $f(C)$ must be monotonic; i.e. the solidus temperature must increase steadily as the composition becomes more depleted. Since $f(C)$ is monotonic, its inverse function, $f^{-1} = g(T_s)$ (also monotonic), exists. The function g gives the composition, C , as a function of the solidus temperature: $C = g(T_s)$.

The third assumption is that, following the melting event, the temperature of the particle will be the temperature of the solidus for its new composition; this is achieved by changing the composition, not the temperature. Melt can be extracted until the residual composition is so refractory ($C = 0$) that no further melting occurs.

Using these assumptions, the degree of melting is explicitly calculated as follows. First, at each time step, temperature (T) is interpolated from the grid to the particles using linear interpolation (using barycentric-based finite-element shape functions). Then using the temperature difference between the composition-dependent solidus and the actual temperature on the particle, we calculate the new composition of

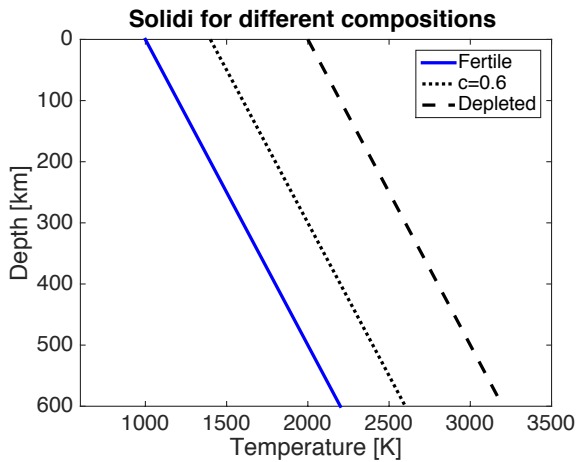


Figure 2. Composition-dependent solidi. The slope of the solidi used is 2 K km^{-1} . The difference between the solidi for completely fertile and fully depleted material is 1000 K . The solidus for the initial value for bulk composition (0.6) is plotted as an example.

the residue C_n (assuming it is in thermal equilibrium with its new solidus (T), and only when the temperature exceeds the solidus):

$$C_n = C(T). \quad (6)$$

Then, using Eq. (5), we can calculate the degree of melting, F , using the new composition. For numerical reasons we set a threshold for F of at least 0.0001 ; degrees of melting lower than this are ignored.

For this work we make the simplifying assumption that the functions relating solidus temperature to composition and the inverse are linear; i.e. functions f and g are linear. This simplification is justified for this work since our goal is to demonstrate and then test the method with a simple semi-analytical model. We also assume that the solidus temperature is a function of pressure and make the reasonable, simplifying assumption for this work that it is a linear relationship (see Fig. 2). Expanding Eq. (6) now gives

$$C_n = 1 - \frac{T - (T_{m-1} + zdT_m/dz)}{\Delta T_{\text{Comp}}}, \quad (7)$$

where, C_n is the new bulk composition; T the temperature at the particle; T_{m-1} the melting temperature at the surface for material of composition of $C = 1$; z the depth of the particle; dT_m/dz the slope of the solidus; and ΔT_{Comp} the compositionally dependent temperature difference between the solidi for material of composition zero and material of composition one.

The total amount of melt is calculated by multiplying the mass of the particle with the degree of melting. This melt (basalt, $C = 1$) is extracted from the melt-producing particle and brought to one or more particles close to the surface.

We consider the particles at the surface, directly above the melt-producing particle, and keep updating their composition towards pure basalt until all melt is stored. We do this starting at the surface layer of the grid and continue downwards to underlying layers if required such that a layer of pure basalt forms and all the melt is accommodated. Since not all particles represent the same amount of mass, we are careful to ensure that all melt is stored and mass conservation is obeyed. Note that the melting/residue particle keeps the same mass. This reflects the fact that the melting column subsides (compacts) in the following way: since basalt is removed, and the particle's mass is conserved, the removed material is implicitly replaced by depleted material (of composition $C = 0$, because fusible component is linearly linked to degree of melting; Eq. 5). The basalt is stored higher in the column, where it takes the space of fully depleted material. Any intervening layers are unchanged.

Note that, after melting, while the temperature of the melt-producing particle in the residue is unchanged (and hence energy is conserved in the melting event), it is in thermal equilibrium with its new solidus since its composition has changed appropriately. The implementation presented here does not take the effect of latent heat or thermal advection by melt migration into account. Neglecting this will only have an effect on the thermal evolution of calculations, and then only ones with massive magmatism. The effect on the chemical evolution considered here will be minimal. This aspect could be added to the model if future applications required it.

We then bring the trace isotopes with the melt to the surface. For this we assume simple batch melting partitioning,

$$A_{m-i} = F \left(\frac{A_{s-i}}{F + (D_i(1 - F))} \right), \quad (8)$$

where A_{m-i} is the abundance of isotope i (number of moles) that is moved to the melt; A_{s-i} the abundance that was present in the solid before melting; F is the degree of melting (Eq. 5); and D_i the isotope (and element)-specific partition coefficient. Note that the right-hand side starts with a multiplication with F , which is not needed when elemental fractionation is described in terms of concentrations. Since our approach deals with abundances, we have to scale to the relative volume of the melt.

We define a melting age for each particle. This is the most recent time that a particle changes its bulk composition due to melting, either by producing or receiving melt. The particles track their melting age, saving this time as one of their attributes.

2.6 Trace elements

We track the evolution of different trace elements through the domain, focussing on several isotopes of U, Th, and Pb. ^{238}U , ^{235}U , and ^{232}Th are the three radioactive parents followed. As they decay radioactively, ^{206}Pb , ^{207}Pb , and

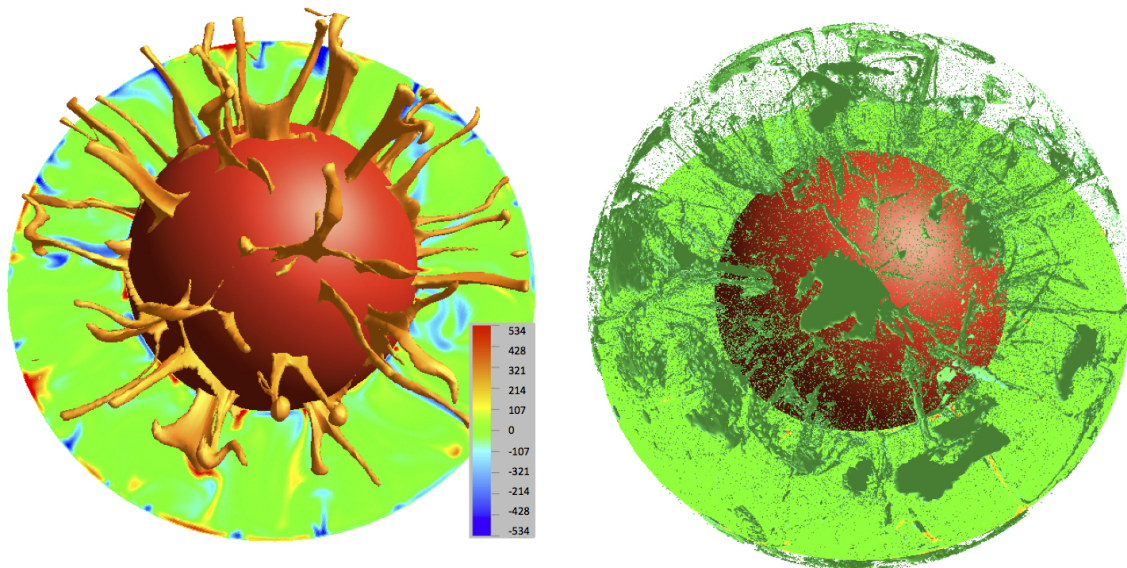


Figure 3. Snapshots of temperature anomaly (left) and matching bulk composition field (right) in the mantle. The red sphere in the middle of the figures is the core–mantle boundary. For the temperature image the isosurface shows where temperature is 200 K higher than the horizontal average value (the top 600 km is omitted); the cross section shows the temperature deviations from the horizontal average value. The composition shows an isosurface of slightly higher than average basaltic component.

^{208}Pb are produced as ultimate decay products. The ratios of these radiogenic (daughter) isotopes to the non-radiogenic ^{204}Pb change as a function of time and parent–daughter ratios. For $^{206}\text{Pb}/^{204}\text{Pb}$ and $^{207}\text{Pb}/^{204}\text{Pb}$, changes of parent–daughter ratios are coupled, since both have parent U isotopes, ^{238}U and ^{235}U respectively. Thus mantle sources, in which U is variably fractionated from Pb, evolve to different $^{206}\text{Pb}/^{204}\text{Pb}$ and $^{207}\text{Pb}/^{204}\text{Pb}$ with time, but the slope of the correlation between these two ratios defines the time of U–Pb fractionation. In reality, it is unlikely the mantle comprises discrete reservoirs, fractionated at the same time and more plausibly a mixture of sources fractionated at variable times. In this case the slope of an array of $^{206}\text{Pb}/^{204}\text{Pb}$ and $^{207}\text{Pb}/^{204}\text{Pb}$ ratios for mantle-derived samples still carries age information about mantle evolution (e.g. Allègre et al., 1980), but interpretation of such “pseudo-isochrons” (see Rudge, 2006) is more complex. One potassium isotope (^{40}K) is also tracked since, next to U and Th, ^{40}K is the isotope that generates the bulk of the mantle’s internal heating.

For all radioactive parents we first estimate the total amount of each isotope at present day. That is the amount in all reservoirs combined, i.e. the total budget for the Earth. After that is done, we estimate the amount at the start of the calculation (3.6 Ga) by adding the amount that has decayed since then, via standard exponential decay (Eq. 9):

$$X_s = X_{\text{pd}} e^{\Delta t \lambda}, \quad (9)$$

where X can be U, Th, or K; X_s is the abundance at the start of the calculation; X_{pd} is the abundance at present day; λ is

the decay constant; and Δt is the time between the time at the start and present day.

2.7 Initialisation of chemistry

The bulk composition is initialised with a C value (bulk composition) of 0.6 for each particle. The initialisation of trace elements is done in terms of concentrations; once attributed to the particles these concentrations are translated to abundances via the masses of the particles. At initialisation we homogeneously depleted the top 30% of the mantle in all trace elements to 98%. This was done as an end-member model (e.g. Armstrong, 1968) to account for the removal of heat-forming elements to the continental crust before 3.6 Ga. We thus implicitly assume that fluxes to the continental crust are balanced by fluxes back to the mantle, although we do not explicitly model this process or its potentially heterogeneous distribution.

2.7.1 Radioactive parents

Uranium-238 (^{238}U) is initialised via an estimate of ^{238}U (mole g^{-1}) for the present bulk silicate Earth (BSE). ^{235}U is initialised via the present-day molar ratio of $^{238}\text{U}/^{235}\text{U}$. ^{40}K and ^{232}Th abundances are estimated via their present-day mass ratios to ^{238}U . Values used are listed in Table 2 and expressed algebraically as

$$^{235}\text{U}_{\text{pd}} = ^{238}\text{U}_{\text{pd}} / \text{U238U235}_{\text{pd}}, \quad (10)$$

Table 2. Parameters and values used for initialisation of trace elements.

Parameter	Value	Explanation
$^{238}\text{U}_{\text{pd}}$	8.402×10^{-11}	Present-day BSE in mole g^{-1}
$\text{U}_{238}\text{U}_{235\text{pd}}$	137.88	Present-day mol ratio $^{238}\text{U} / ^{235}\text{U}$
KU_{MR}	$1.40 \times 10^{+4}$	Present-day K / U mass ratio
$^{40}\text{K}_{\%}$	0.01167	Mole-% of K that is ^{40}K at present day
ThU_{MR}	3.8	Present-day Th / U mass ratio
$\text{M}(\text{U})$	238.029	g U mole^{-1}
$\text{M}(\text{Th})$	232.038	g Th mole^{-1}
$\text{M}(\text{K})$	39.098	g K mole^{-1}
$\text{U}_{238}\text{Pb}_{204\text{pd}}$	8.0	Present-day BSE molar ratio
$\text{Pb}_{\text{diablo}}^{206/204}$	9.3066	Initial ratios of the Earth (from Canyon Diablo meteorite).
$\text{Pb}_{\text{diablo}}^{207/204}$	10.293	
$\text{Pb}_{\text{diablo}}^{208/204}$	29.475	
T_{E}	4.56 Gy	Age of the Earth

$$^{40}\text{K}_{\text{pd}} = \frac{^{40}\text{K}_{\%}}{100} \cdot ^{238}\text{U}_{\text{pd}} \cdot \text{KU}_{\text{MR}} \cdot \frac{\text{M}(\text{U})}{\text{M}(\text{K})}, \quad (11)$$

$$^{232}\text{Th}_{\text{pd}} = ^{238}\text{U}_{\text{pd}} \cdot \text{ThU}_{\text{MR}} \cdot \frac{\text{M}(\text{U})}{\text{M}(\text{Th})}. \quad (12)$$

2.7.2 Radioactive daughters

The BSE abundance of ^{204}Pb is estimated via the molar ratio to ^{238}U at present day. Note that, since ^{204}Pb is stable, this equals the amount at the start of a calculation.

$$^{204}\text{Pb} = ^{238}\text{U}_{\text{pd}} / \text{U}_{238}\text{Pb}_{204\text{pd}} \quad (13)$$

Initial abundances for the radiogenic Pb isotopes are estimated via the ratio to ^{204}Pb at time of the formation of Earth:

$$^{206}\text{Pb}_{\text{s}} = ^{204}\text{Pb} \cdot \text{Pb}_{\text{diablo}}^{206/204} + ^{238}\text{U}_{\text{D}}, \quad (14)$$

$$^{207}\text{Pb}_{\text{s}} = ^{204}\text{Pb} \cdot \text{Pb}_{\text{diablo}}^{207/204} + ^{235}\text{U}_{\text{D}}, \quad (15)$$

$$^{208}\text{Pb}_{\text{s}} = ^{204}\text{Pb} \cdot \text{Pb}_{\text{diablo}}^{208/204} + ^{232}\text{Th}_{\text{D}}. \quad (16)$$

The $^{238}\text{U}_{\text{D}}$, $^{235}\text{U}_{\text{D}}$, and $^{232}\text{Th}_{\text{D}}$ are the amounts of ^{238}U , ^{235}U , and ^{232}Th respectively that have decayed between the formation of the Earth and the time the calculation starts (3.6 Ga). These values are calculated using Eq. (9), with T_{E} , the age of the Earth, and the decay constants as listed in Table 3.

3 Results

Figure 3 shows snapshots of temperature distribution and bulk composition in the domain. Figure 4 shows snapshots of the temperature, melt production, bulk composition and

Table 3. Isotope data: decay constant (λ) per year and partition coefficient (D) of isotopes.

Isotope	λ	D
^{204}Pb	–	0.025
^{206}Pb	–	0.025
^{207}Pb	–	0.025
^{208}Pb	–	0.025
^{235}U	9.85×10^{-10}	0.007
^{238}U	1.55×10^{-10}	0.007
^{232}Th	4.95×10^{-11}	0.008
^{40}K	5.54×10^{-10}	0.010

melting age (i.e. time since melting), at the end of the calculation. The relationships between these parameters is clearly visible; in our model, mantle material melts at focussed regions of high temperature close to the surface (plumes), where the bulk composition gets altered. The basalt collects at the surface directly above. From there, material moves mainly along the surface towards elongate regions of downwelling flow (subduction zones). Segregated material has reached the CMB within 500 million years (seen in time series of bulk compositional field and values of the domain root mean square (rms) velocity which is above 1 cm year^{-1} ; not shown). The snapshots are representative of the structures as they develop over time; note that both the amount of melt produced over time (Fig. 5c) and the increase in the average melting age over time (Fig. 6) are steady. Figure 7 shows the radial distribution of Pb isotopes and Pb isotope ratios radially. The more basalt-rich surface layer shows up as an increase for example in ^{204}Pb , while just beneath we see a decrease which goes with the thin underlying residual layer.

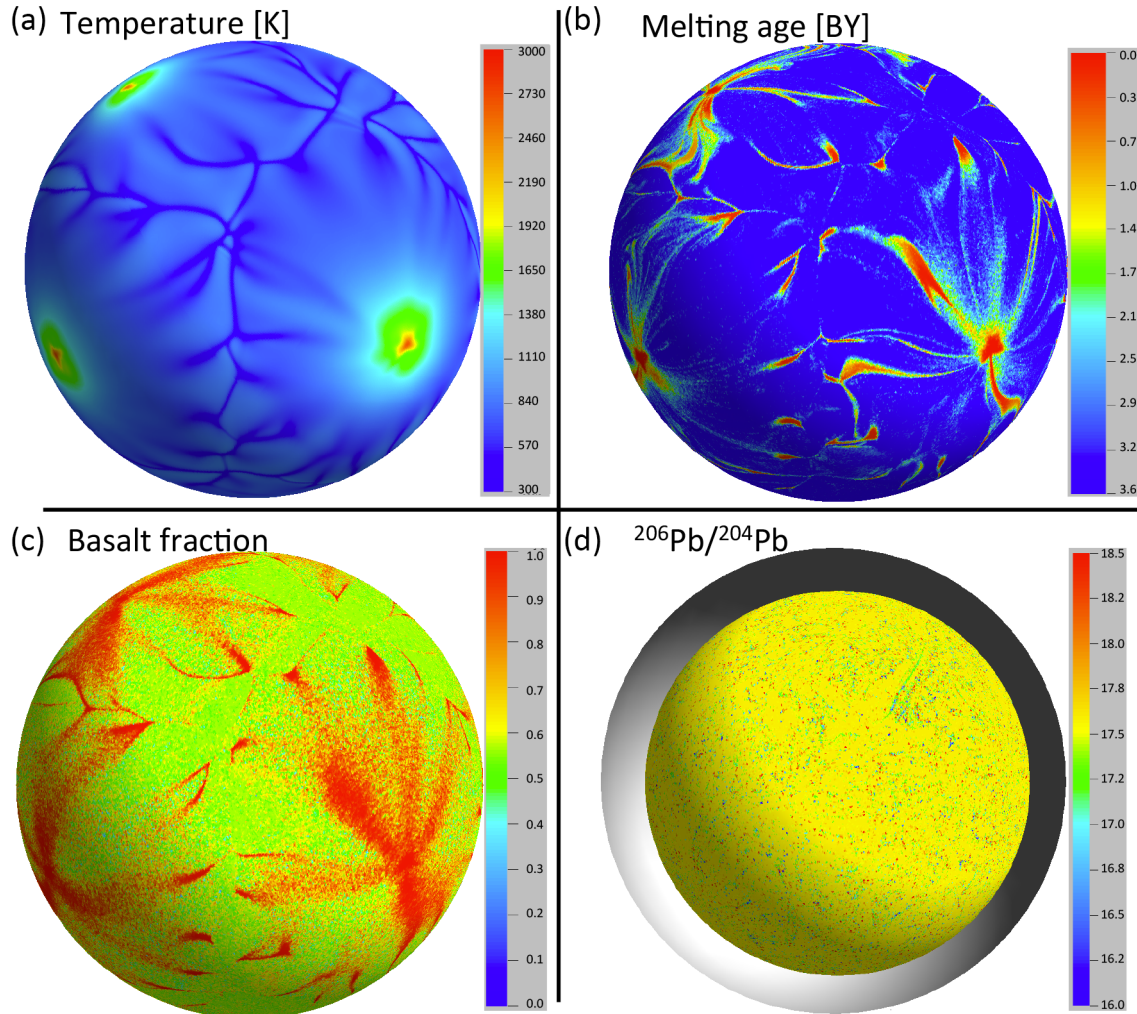


Figure 4. Snapshots taken at the end of the calculation of (a) temperature 50 km below the surface; (b) time since melting (in billions of years) 50 km below the surface; (c) basalt fraction at the surface; (d) $^{206}\text{Pb}/^{204}\text{Pb}$ molar ratio at a depth of 1300 km. Note that melting in our model happens at the top of regions of central upwellings (plumes). Also, as the lead isotope panel (d) shows, the mid-mantle seems to be fairly homogenous on the scale modelled here. For the melting time (b), basalt fraction (c) and lead isotope ratio (d) the values were linearly interpolated from the particles to the grid before plotting.

Deeper in the mantle the figure shows that in this case it is relatively well mixed with limited variation.

3.1 Melting diagnostics

As shown in Fig. 5a, our method conserves bulk composition (average value stays constant over time). The figure also shows that the surface average bulk composition becomes more basaltic than the global average, as expected. Figure 5b shows that the total number of particles present in the domain stays roughly constant at a total of 1.2 billion, although particles are continuously merged and split (Fig. 5b). The fact that this method conserves bulk composition shows that the splitting and merging does not affect the average composition. Figure 5c shows total melt production over time. As shown,

there is limited variation in the amount of melt produced as a function of time. Melt production never stops.

3.2 Pb pseudo-isochrons vs. melting age distributions

Following Rudge (2006), we can compare our findings with his analytical solution linking pseudo-isochron ages based on Pb isotope distributions to the distribution of melting ages in the mantle, using

$$\frac{^{235}\text{U}}{^{238}\text{U}} \cdot \frac{(e^{\lambda_{235}\tau_{\text{ddi}}} - 1)}{(e^{\lambda_{238}\tau_{\text{ddi}}} - 1)} = \beta, \quad (17)$$

where ^{235}U and ^{238}U are the abundances of uranium isotopes; λ_{235} and λ_{238} the decay constants; τ_{ddi} the pseudo-

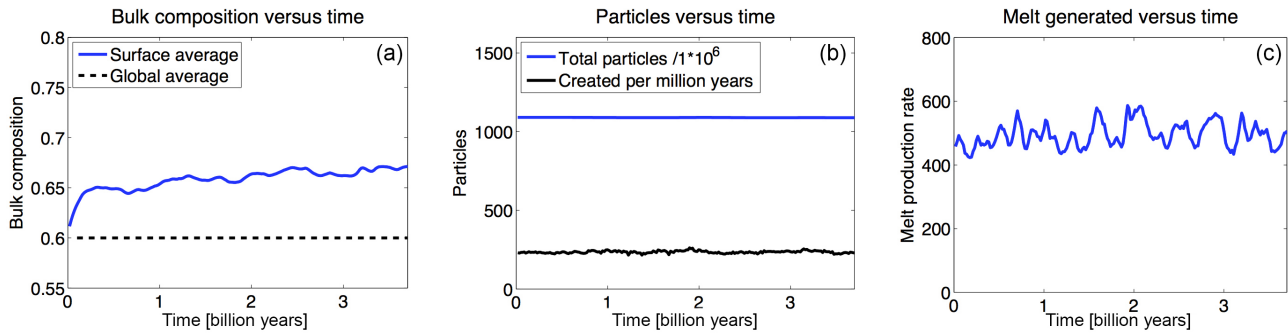


Figure 5. Time diagnostics of (a) bulk composition (left diagram); (b) particle evolution (middle diagram); and (c) melt generation (right diagram). (a) The global average bulk composition (dashed black line) stays at the initial value of 0.6, showing conservation of composition. The surface average (solid blue line) was measured as the average bulk composition of the particles that are in the top layer of elements. The surface average composition is always a bit higher than the global average since, on melting, basalt (composition = 1) is sent (i.e. migrates) to the surface. (b) The solid blue line indicates the total number of particles present in the domain over time. Although particles are created and merge continuously, the total count stays around 1.2 billion. The black line indicates the particle production rate, which is about 200 per million years. Over the full calculation time of 3.6 billion years around 0.7 million particles are created, which is less than 1 in 1000 compared to the total amount. (c) Melt production rate (in $\text{km}^3 \text{year}^{-1}$) versus time. The melt production varies by about 10% on short timescale (~ 50 MY) but is constant over longer timescales and never lower than $\sim 80\%$ of the average value. The melt production as shown here included also the melt that was transported back to the same radial layer.

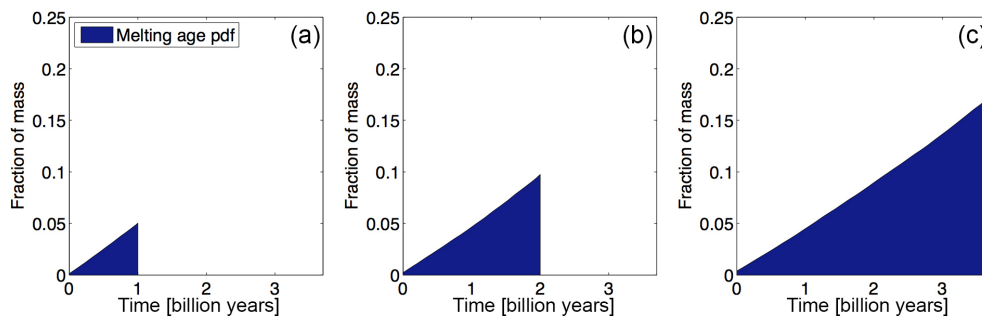


Figure 6. Cumulative probability density functions of the distribution of melting ages at different times during the calculation. The “fraction of mass” indicated on the vertical axes is the fraction of the total mass of the mantle. (a) 1 billion years; (b) 2 billion years; and (c) 3.6 billion years. Time is plotted as “calculation time”, meaning that 3.6 billion years is present day and 0 is 3.6 billion years in the past. Images are based on 40 bins. The gradual increase in total fraction of mantle mass that has a melting age matches the steady melt production rate (Fig. 5c). Towards the end of the calculation close to 20% of the volume of the mantle has been through melting at least once.

isochron ages; and β the slope of the regression line for the $^{207}\text{Pb} / ^{204}\text{Pb}$ vs. $^{206}\text{Pb} / ^{204}\text{Pb}$ plot.

We can plot the Pb isotope ratios carried by the particles, for example in the top layer of the model, at different times. Following Rudge (2006), we fit a geometric mean regression line (also known as the reduced major axis regression line, as in Fig. 8) to these data at the different times, i.e. evaluating β of Eq. (17). Then, using Eq. (17), we can evaluate the pseudo-isochron age τ_{ddi} for each of these different times. Similarly, following Rudge (2006), a pseudo-isochron age can be obtained by looking at the distribution of melting ages in the mantle as follows:

$$\frac{(e^{\lambda_{235}\tau_{\text{ddi}}} - 1)^2}{(e^{\lambda_{238}\tau_{\text{ddi}}} - 1)^2} = \frac{E(e^{\lambda_{235}\hat{T}_m} - 1)^2}{E(e^{\lambda_{238}\hat{T}_m} - 1)^2}, \quad (18)$$

where

$$Ef(\hat{T}_m) = \int_0^{\tau_s} f(\tau)q_m(\tau)d\tau. \quad (19)$$

$q_m(\tau)$ is the probability density function of the particle melting ages; $f(\tau)$ is an arbitrary given function (e.g. $(e^{\lambda_{238}\hat{T}_m} - 1)^2$); τ_{ddi} is the pseudo-isochron age; \hat{T}_m is a random variable which gives the distributions of the parcel ages that have undergone melting; and τ_s is the starting age of the model, 3.6 Gy. Rudge’s theory is based on a statistical box model and in particular assumes (1) strong mixing and (2) heavy averaging.

Figure 6 shows the buildup of $q_m(\tau)$ over time in our model. Since melt production is fairly constant, the histograms show a steady increase in melting age.

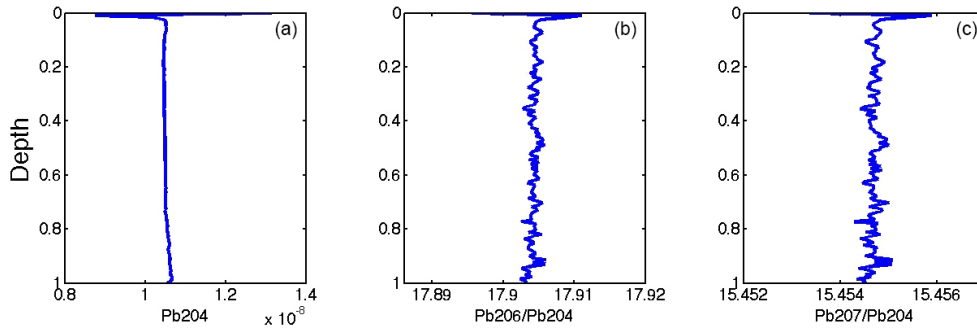


Figure 7. Radial profiles of different Pb isotopes taken at the end of the calculation (present day, after 3.6 BY of calculation time). The vertical axes indicate the non-dimensional depth running from the surface (0) to the core–mantle boundary (1). The left diagram shows the radial average (mean) concentration of ^{204}Pb in moles per kilogram. The middle two diagrams show the radial average molar ratios of $^{206}\text{Pb}/^{204}\text{Pb}$ and $^{207}\text{Pb}/^{204}\text{Pb}$.

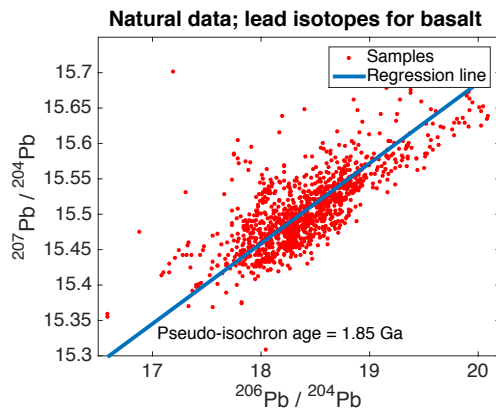


Figure 8. Scatter plot of measured ratios of Pb isotope data of mid-ocean ridge basalt (MORB) samples (data from the PetDB database: Lehnert et al., 2000, www.earthchem.org/petdb). The data selected are for “spreading ridges”, “basalt”, and “fresh”; samples were taken deeper than 2000 m below sea level. The geometric mean regression line has a pseudo-isochron age of 1.85 Gy.

Figure 9b shows the time evolution of the obtained pseudo-isochron ages based on Pb isotopes (τ_{ddi} from Eqs. 17 and 18; black and red curves in Fig. 9b) and particle melting ages (blue line in Fig. 9b).

For Fig. 9b, showing Pb isotopes on the surface, our results were subsampled and used only data on Pb isotopes from particles that had undergone melting at least once (had a melting age) and were at the surface layer of the model. For the Pb isotopes sampled at the melt, our results were subsampled and used only data on Pb isotopes from melt that was produced in that time step (i.e. not taking the information from a particle but from the material that moved to the surface due to melting). In this case, the pseudo-isochron has a value of 0 for the first 500 million years of the calculated time since until that time only unfractionated material is sampled.

4 Discussion

We have implemented tracking of radioactively decaying isotope systems in a numerical model of mantle convective flows. Through this integration we have a tool that will allow experiments on the evolution of the Earth's mantle, providing stronger constraints on both the spatial and temporal evolution. The key process is fractionation of both bulk composition and trace elements on melting. The algorithm that deals with this process (Sect. 2.5) is built on using particles to track the advection of chemical concentration (bulk composition) and abundances (trace elements) with fluid flow. Upon melting, information about bulk and trace element composition is moved between those particles. In that way we simulate eruption of material as it is transported to the surface. An advantage of this method of moving melt (i.e. via information not particles) is that we can consider any degree of melting without being limited by the resolution of the number of particles. However, in algorithms that move particles the quanta of melt that can be considered are dictated by the mass that a single particle represents. This allows us to consider much smaller degrees of melting, which is important for example for incompatible elements in the residue. Also, we do not have to gather enough melt before eruption can happen; i.e. melting is dealt with every time step, immediately after it is formed. Some previous methods used buffering before erupting melt for the numerical reasons explained. When melting happens close to the surface (as in our implementation), there is no physical reason to buffer the melt. At greater depth in the Earth there might be internal melting (no eruption), which is not dealt with in our implementation. Two further consequences are (i) our implementation is computationally easier, in the sense that it requires much less communication between different parts of the grid, and (ii) melting does not lead to variations in the concentration of particles.

By deliberately keeping the system simple, we can compare and test the results of our numerical experiments to a quasi-analytical solution (Sect. 3, Rudge, 2006). This solu-

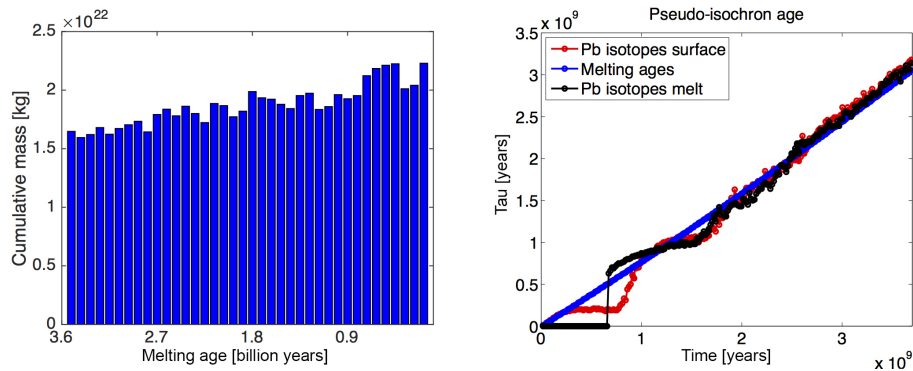


Figure 9. Pseudo-isochron ages calculated. (left) Histogram of the melting ages. The height of the bins shows the summed mass represented by all the particles that have a melting age that falls in that bin. (right) Pseudo-isochron ages as determined via the Pb isotopes sampled at the surface (red), the melting ages distribution (blue), and Pb isotopes sampled at the melt (black). The horizontal axis shows time since the start of the calculation and the vertical axis the pseudo-isochron age.

tion links the melting-time distribution of the whole mantle to the pseudo-isochrons that can be measured in lead isotopes sampled only at the surface of the domain. Figure 8b shows that we produce a good match between the pseudo-isochron ages based on surface samples and pseudo-isochron ages based on melting-time distributions. At the end of the modelled time the misfit is around 2%. We note (1) that our Eq. (18) from Rudge (2006) assumes a well-mixed planet and (2) that the number of melting events that are averaged before sampling (N) is large (heavy averaging), a generalisation from Rudge et al. (2005). As regards the mixing, we note that the homogeneous distribution of Pb isotopes, both radially (Fig. 7) and laterally (Fig. 4d), supports strong mixing. As regards averaging, we note that Rudge (2006) suggests that the dependence of the pseudo-isochron age on N is fairly weak. The good match is achieved for both sampling the surface and sampling the melt. When sampling the melt, $N = 1$, while particles sampled at the surface carry the signature of a collection of multiple melting events (larger N). The results presented here also support that the dependence of the pseudo-isochron age on N is weak. The good match gives us confidence in the method and therefore opens the opportunity to extract information about the interior distributions of chemical heterogeneity from surface observations.

The sampling location can be important as can be seen in Fig. 9b, where we show the evolution of the pseudo-isochron based on random sampling across the surface and sampling of the melt just after fractionation. Early on in the calculation, the difference between our subset sampled at the surface and the melting location is substantial mainly because the material sampled at melting locations has not gone through melting and fractionation before, whereas the surface contains fractionated material immediately after the calculation starts. On the long timescale ($> \text{BY}$) the difference between the two isochrons is very small, again supporting the idea of a strongly mixed reservoir.

In our model set-up, due to the convective pattern resulting from limited variation in viscosity, melting predominantly happens at the top of circular upwellings, i.e. plume-like structures. Most melting in the terrestrial mantle (and chemical fractionation) happens at elongate plate boundaries; oceanic spreading ridges; and the downwelling counterpart, subduction zones. Although different in detail, the global-scale distribution and evolution of both melting ages and isotope patterns seem largely unaffected. This is also shown by the limited difference observed in the pseudo-isochrons based on samples taken at random across the surface versus those taken at the location of melt production.

Although the pseudo-isochrons we find via the melting ages and lead isotopes are consistent, in absolute value they do deviate from the one observed in lead isotopes in nature. As mentioned already, the simulation case presented is intentionally simple to allow a direct comparison with the analytical solution of Rudge (2006); as a result it is not Earth-like in every respect. In particular, the vigour of convection (mean velocity: $\sim 1.5 \text{ cm year}^{-1}$) is much lower than Earth (current surface velocity: 5 cm year^{-1} rms). Also the model vigour is constant, while on Earth it is expected to be more vigorous in the hotter past. The combined effect is that the number of overturns in the simulated case will be many times less than for Earth (Huang and Davies, 2007a). Therefore the number of passages through melting zones will also be much lower in this simulation than Earth. Since this model case is not Earth-like in either its vigour or its melting, a difference between pseudo-isochron ages is not a surprise. Since more melting would remove more of the older heterogeneities and therefore reduce the pseudo-isochron age, it might be expected therefore that more realistic models will have the potential to reconcile these differences. Future work is planned to investigate this.

Future implementations will be extended with routines to allow trace elements to move to/from both continent and atmosphere reservoirs (for noble gasses) and will have exten-

sions on how chemical structures affect the flow field. The good comparison to analytical theory presented in this work gives confidence that the current implementation is a good basis from which to include more complex and Earth-like processes into future numerical experiments. By doing so we can shift the focus from comparing numerical experiments to analytical solutions, to comparing them to observations.

5 Conclusions

We presented and tested a new implementation for tracking bulk chemistry and trace element abundance in a global mantle convection code that includes melting. A notable feature of the melting routine is that we transport information between particles, rather than moving particles. We showed that our implementation is robust in the sense that (1) it conserves composition; (2) it conserves trace element abundance; and (3) it matches the Rudge (2006) quasi-analytical solution for the prediction of isochron ages based on the distribution of melting age and pseudo-isochron ages based on lead isotopes at the surface of the model.

Code availability

The TERRA code is not freely available. This is because the code has been developed over many years, starting before “open-source” style licensing was available. There have been many developers. As a result we do not have the rights to release all parts of the code. The extensions described in this manuscript that deal with melting form a module that is called each time step, immediately after the particles have been advected. We note that our current implementation as presented affects only the chemistry; there is no link between the chemistry and the fluid mechanics equations. The modules pertinent to this manuscript are available on request from the lead author.

Acknowledgements. We acknowledge the support of NERC NE/H006559/1, NE/K004824/1 and NE/M000400/1. We also acknowledge the support of NERC ARCHER (UK national super-computer). The authors acknowledge Andy Heath, Ian Thomas and Ian Merrick for developing the software “MantleVis” used to create Figs. 3 and 4. We thank Takashi Nakagawa and an anonymous reviewer for constructive comments that improved the clarity of the manuscript.

Edited by: T. Poulet

References

Allègre, C., Brevart, O., Dupré, B., and Minster, J.-F.: Isotopic and chemical effects produced in a continuously differentiating convecting Earth mantle, *Philos. T. R. Soc. Lond.*, 297, 447–477, 1980.

- Armstrong, R. L.: A model for the evolution of strontium and lead isotopes in a dynamic earth, *Rev. Geophys.*, 6, 175–199, 1968.
- Baumgardner, J. R.: Three-dimensional treatment of convective flow in the Earth's mantle, *J. Stat. Phys.*, 39, 501–511, 1985.
- Baumgardner, J. R. and Frederickson, P. O.: Icosahedral discretization of the two-sphere, *SIAM J. Numer. Anal.*, 22, 1107–1115, 1985.
- Brandenburg, J. and van Keken, P.: Methods for thermochemical convection in Earth's mantle with force-balanced plates, *Geochem. Geophys. Geosys.*, 8, Q11004, doi:10.1029/2007GC001692, 2007a.
- Brandenburg, J. and van Keken, P.: Deep storage of oceanic crust in a vigorously convecting mantle, *J. Geophys. Res.-Sol. Ea.*, 112, B06403, doi:10.1029/2006JB004813, 2007b.
- Brandenburg, J., Hauri, E. H., van Keken, P. E., and Ballentine, C. J.: A multiple-system study of the geochemical evolution of the mantle with force-balanced plates and thermochemical effects, *Earth Planet. Sc. Lett.*, 276, 1–13, 2008.
- Bunge, H.-P. and Baumgardner, J. R.: Mantle convection modeling on parallel virtual machines, *Comput. Phys.*, 9, 207–215, 1995.
- Christensen, U. R. and Hofmann, A. W.: Segregation of subducted oceanic crust in the convecting mantle, *J. Geophys. Res.-Sol. Ea.*, 99, 19867–19884, 1994.
- Davies, D. R., Davies, J. H., Hassan, O., Morgan, K., and Nithiarasu, P.: Investigations into the applicability of adaptive finite element methods to two-dimensional infinite Prandtl number thermal and thermochemical convection, *Geochem. Geophys. Geosys.*, 8, Q05010, doi:10.1029/2006GC001470, 2007.
- Davies, D. R., Davies, J. H., Bollada, P. C., Hassan, O., Morgan, K., and Nithiarasu, P.: A hierarchical mesh refinement technique for global 3-D spherical mantle convection modelling, *Geosci. Model Dev.*, 6, 1095–1107, doi:10.5194/gmd-6-1095-2013, 2013.
- Davies, G. F.: Stirring geochemistry in mantle convection models with stiff plates and slabs, *Geochim. Cosmochim. Ac.*, 66, 3125–3142, 2002.
- De Smet, J., Van den Berg, A., and Vlaar, N.: Stability and growth of continental shields in mantle convection models including recurrent melt production, *Tectonophysics*, 296, 15–29, 1998.
- Huang, J. and Davies, G. F.: Stirring in three-dimensional mantle convection models and implications for geochemistry: Passive tracers, *Geochem. Geophys. Geosys.*, 8, Q03017, doi:10.1029/2006GC001312, 2007a.
- Huang, J. and Davies, G. F.: Stirring in three-dimensional mantle convection models and implications for geochemistry: 2. Heavy tracers, *Geochem. Geophys. Geosys.*, 8, Q07004, doi:10.1029/2007GC001621, 2007b.
- Huang, J. and Davies, G. F.: Geochemical processing in a three-dimensional regional spherical shell model of mantle convection, *Geochem. Geophys. Geosys.*, 8, Q11006, doi:10.1029/2007GC001625, 2007c.
- Köstler, C.: Iterative solvers for modeling mantle convection with strongly varying viscosity, PhD thesis, Friedrich-Schiller-Univ. Jena, Germany, 2011.
- Lehnert, K., Su, Y., Langmuir, C., Sarbas, B., and Nohl, U.: A global geochemical database structure for rocks, *Geochem. Geophys. Geosys.*, 1, 1012, doi:10.1029/1999GC000026, 2000.
- Nakagawa, T. and Tackley, P. J.: Thermo-chemical structure in the mantle arising from a three-component convective system and

- implications for geochemistry, *Phys. Earth Planet. In.*, 146, 125–138, 2004.
- Nakagawa, T., Tackley, P. J., Deschamps, F., and Connolly, J. A.: Incorporating self-consistently calculated mineral physics into thermochemical mantle convection simulations in a 3-D spherical shell and its influence on seismic anomalies in Earth's mantle, *Geochem. Geophys. Geosys.*, 10, Q03004, doi:10.1029/2008GC002280, 2009.
- Nakagawa, T., Tackley, P. J., Deschamps, F., and Connolly, J. A.: The influence of MORB and harzburgite composition on thermochemical mantle convection in a 3-D spherical shell with self-consistently calculated mineral physics, *Earth Planet. Sc. Lett.*, 296, 403–412, 2010.
- Oldham, D. and Davies, J. H.: Numerical investigation of layered convection in a three-dimensional shell with application to planetary mantles, *Geochem. Geophys. Geosys.*, 5, Q12C04, doi:10.1029/2003GC000603, 2004.
- Rudge, J. F.: Mantle pseudo-isochrons revisited, *Earth Planet Sc. Lett.*, 249, 494–513, 2006.
- Rudge, J. F., McKenzie, D., and Haynes, P. H.: A theoretical approach to understanding the isotopic heterogeneity of mid-ocean ridge basalt, *Geochim. Cosmochim. Ac.*, 69, 3873–3887, 2005.
- Samuel, H. and Evonuk, M.: Modeling advection in geophysical flows with particle level sets, *Geochem. Geophys. Geosys.*, 11, Q08020, doi:10.1029/2010GC003081, 2010.
- Stegman, D. R., Richards, M. A., and Baumgardner, J. R.: Effects of depth-dependent viscosity and plate motions on maintaining a relatively uniform mid-ocean ridge basalt reservoir in whole mantle flow, *J. Geophys. Res.*, 107, ETG 5-1–ETG 5-8, doi:10.1029/2001JB000192, 2002.
- Stegman, D. R., Jellinek, A. M., Zatman, S. A., Baumgardner, J. R., and Richards, M. A.: An early lunar core dynamo driven by thermochemical mantle convection, *Nature*, 421, 143–146, 2003.
- Tackley, P. J.: Mantle Geochemical Geodynamics, in: *Treatise on Geophysics*, edited by: Schubert, G. and Bercovici, D., 437–505, Elsevier, Amsterdam, 2007.
- van Keken, P. E. and Ballentine, C.: Whole-mantle versus layered mantle convection and the role of a high-viscosity lower mantle in terrestrial volatile evolution, *Earth Planet. Sc. Lett.*, 156, 19–32, 1998.
- Van Thienen, P., Van den Berg, A., and Vlaar, N.: Production and recycling of oceanic crust in the early Earth, *Tectonophysics*, 386, 41–65, 2004.
- Walzer, U. and Hendel, R.: A new convection-fractionation model for the evolution of the principal geochemical reservoirs of the Earth's mantle, *Phys. Earth Planet. In.*, 112, 211–256, 1999.
- Xie, S. and Tackley, P. J.: Evolution of U-Pb and Sm-Nd systems in numerical models of mantle convection and plate tectonics, *J. Geophys. Res.-Sol. Ea.*, 109, B11204, doi:10.1029/2004JB003176 2004a.
- Xie, S. and Tackley, P. J.: Evolution of helium and argon isotopes in a convecting mantle, *Phys. Earth Planet. In.*, 146, 417–439, 2004b.
- Yang, W.-S. and Baumgardner, J. R.: A matrix-dependent transfer multigrid method for strongly variable viscosity infinite Prandtl number thermal convection, *Geophys. Astro. Fluid*, 92, 151–195, 2000.
- Zhong, S. and Hager, B. H.: Entrainment of a dense layer by thermal plumes, *Geophys. J. Int.*, 154, 666–676, 2003.