



Westerberg, I., & McMillan, H. K. (2015). Uncertainty in hydrological signatures. *Hydrology and earth system sciences*, 19, 3951-3968.
10.5194/hess-19-3951-2015

Publisher's PDF, also known as Final Published Version

Link to published version (if available):
[10.5194/hess-19-3951-2015](https://doi.org/10.5194/hess-19-3951-2015)

[Link to publication record in Explore Bristol Research](#)
PDF-document

University of Bristol - Explore Bristol Research

General rights

This document is made available in accordance with publisher policies. Please cite only the published version using the reference above. Full terms of use are available:
<http://www.bristol.ac.uk/pure/about/ebr-terms.html>

Take down policy

Explore Bristol Research is a digital archive and the intention is that deposited content should not be removed. However, if you believe that this version of the work breaches copyright law please contact open-access@bristol.ac.uk and include the following information in your message:

- Your contact details
- Bibliographic details for the item, including a URL
- An outline of the nature of the complaint

On receipt of your message the Open Access Team will immediately investigate your claim, make an initial judgement of the validity of the claim and, where appropriate, withdraw the item in question from public view.



Uncertainty in hydrological signatures

I. K. Westerberg^{1,2} and H. K. McMillan³

¹Department of Civil Engineering, University of Bristol, Queen's Building, University Walk, Clifton, BS8 1TR, UK

²IVL Swedish Environmental Research Institute, P.O. Box 21060, 10031, Stockholm, Sweden

³National Institute of Water and Atmospheric Research, P.O. Box 8602, Christchurch, New Zealand

Correspondence to: I. K. Westerberg (ida.westerberg@bristol.ac.uk)

Received: 27 March 2015 – Published in Hydrol. Earth Syst. Sci. Discuss.: 24 April 2015

Revised: 31 July 2015 – Accepted: 24 August 2015 – Published: 24 September 2015

Abstract. Information about rainfall–runoff processes is essential for hydrological analyses, modelling and water-management applications. A hydrological, or diagnostic, signature quantifies such information from observed data as an index value. Signatures are widely used, e.g. for catchment classification, model calibration and change detection. Uncertainties in the observed data – including measurement inaccuracy and representativeness as well as errors relating to data management – propagate to the signature values and reduce their information content. Subjective choices in the calculation method are a further source of uncertainty.

We review the uncertainties relevant to different signatures based on rainfall and flow data. We propose a generally applicable method to calculate these uncertainties based on Monte Carlo sampling and demonstrate it in two catchments for common signatures including rainfall–runoff thresholds, recession analysis and basic descriptive signatures of flow distribution and dynamics. Our intention is to contribute to awareness and knowledge of signature uncertainty, including typical sources, magnitude and methods for its assessment.

We found that the uncertainties were often large (i.e. typical intervals of ± 10 – 40 % relative uncertainty) and highly variable between signatures. There was greater uncertainty in signatures that use high-frequency responses, small data subsets, or subsets prone to measurement errors. There was lower uncertainty in signatures that use spatial or temporal averages. Some signatures were sensitive to particular uncertainty types such as rating-curve form. We found that signatures can be designed to be robust to some uncertainty sources. Signature uncertainties of the magnitudes we found have the potential to change the conclusions of hydrological and ecohydrological analyses, such as cross-catchment comparisons or inferences about dominant processes.

1 Introduction

1.1 Hydrological signatures and observational uncertainty

Information about rainfall–runoff processes in a catchment is essential for hydrological analyses, modelling and water-management applications. Such information derived as an index value from observed data series (rainfall, flow and/or other variables) is known as a hydrological or diagnostic signature and is widely used in both hydrology (Hrachowitz et al., 2013) and ecohydrology (Olden and Poff, 2003). The reliability of signature values depends on uncertainties in the data and calculation method, and some signatures may be particularly susceptible to uncertainty. Signature uncertainties have so far received little attention in the literature; therefore, guidance on how to assess uncertainty and typical uncertainty magnitudes would be valuable.

Signatures are used to identify dominant processes and to determine the strength, speed and spatiotemporal variability of the rainfall–runoff response. Common signatures describe the flow regime (e.g. flow duration curve, FDC, and recession characteristics) and the water balance (e.g. runoff ratio and catchment elasticity; Harman et al., 2011). Field studies have identified drivers of catchment function, such as a threshold response to antecedent wetness (Graham et al., 2010b; Penna et al., 2011; Tromp-van Meerveld and McDonnell, 2006a), which have been captured as signatures (McMillan et al., 2014). Signatures often incorporate multiple data types, including soft data (Seibert and McDonnell, 2002; Winsemius et al., 2009).

There is a long history of using flow signatures in ecohydrology to assess instream habitat including the seasonal

streamflow pattern, and the timing, frequency and duration of extreme flows (e.g. Jowett and Duncan, 1990). Signatures are used to detect hydrological change, e.g. Archer and Newson (2002) used flow signatures to assess the impacts of upland afforestation and drainage. Signatures can define hydrological similarity between catchments (McDonnell and Woods, 2004; Sawicz et al., 2011; Wagener et al., 2007) and assist prediction in ungauged basins (Blöschl et al., 2013). Model calibration criteria using signatures are useful because they preserve information in measured data (Gupta et al., 2008; Refsgaard and Knudsen, 1996; Sugawara, 1979). Signatures used in calibration include the FDC (Westerberg et al., 2011), flow entropy (Pechlivanidis et al., 2012), the spectral density function (Montanari and Toth, 2007), and combinations of multiple signatures (Pokhrel et al., 2012). By using signatures that target individual modelling decisions, model components can be tested for compatibility with observed data (Clark et al., 2011; Coxon et al., 2013; Hrachowitz et al., 2014; Kavetski and Fenicia, 2011; Li and Sivapalan, 2011; McMillan et al., 2011). Hydrological signatures have been regionalised to ungauged basins and then used to constrain a model for the ungauged basin (Kapangaziwiri et al., 2012; Westerberg et al., 2014; Yadav et al., 2007).

Some authors have considered the effect of data uncertainty on hydrological signatures (Kauffeldt et al., 2013), particularly in model calibration. Blazkova and Beven (2009) incorporate uncertainties in signatures used as limits of acceptability to constrain hydrological models. Juston et al. (2014) investigate the impact of rating-curve uncertainty on FDCs and change detection for a Kenyan basin. They show that uncertainty in extrapolated high flows creates significant uncertainty in the FDC and the total annual flow. Kennard et al. (2010) discuss the uncertainties affecting ecohydrological flow signatures from measurement error, data retrieval and preprocessing, data quality, and the hydrologic metric estimation.

1.2 Uncertainty considerations relevant for hydrological signatures

We present a short description of data uncertainties relevant to hydrological signatures (see McMillan et al., 2012, for a longer review). In general, data uncertainties stem from (1) measurement uncertainty (e.g. instrument inaccuracy or malfunction), (2) measurement representativeness for the variable under study (e.g. point rainfall compared to catchment average rainfall), and (3) data management uncertainty (e.g. data entry errors, filling of missing values or station coordinate errors). Errors from data management, equipment malfunction or human errors can often be detected and corrected in quality control (Bengtsson and Milloti, 2010; Eischeid et al., 1995; Viney and Bates, 2004; Westerberg et al., 2010). But some data errors, e.g. poorly calibrated or off-level rain gauges, are difficult to correct post hoc (Sieck et al., 2007). The calculation of some signatures requires sub-

jective decisions that introduce extra uncertainty, for example storm identification criteria, data time step, and whether to split the data by month/season (e.g. Stoelzle et al., 2013).

Each uncertainty component requires an error model that specifies the error distribution and dependencies (e.g. errors may be heteroscedastic and/or autocorrelated). It is essential that the error model accurately reflects the uncertainty, rather than simply adding random noise, as hydrological uncertainties are typically highly structured. Some measurement uncertainties can be estimated by repeated sampling, whereas representativeness errors are difficult to estimate. The latter are often epistemic due to lack of knowledge at unmeasured locations/time periods (e.g. rainfall distant from rain gauges). The most appropriate method to assess data uncertainty depends on the information available and the hydrologist's knowledge of the catchment. For example, the choice of likelihood function may depend on characteristics of the data errors and the measurement site. Uncertainty estimation depends on the perceptual understanding of the uncertainty sources as well as the studied system and there is potential for a false sense of certainty about uncertainty where strong error model assumptions are made (Brown, 2004). Juston et al. (2014) refer to *uncertainty*² and show how interpretation of uncertainties as random vs. systematic affects hydrologic change detection. This paper was focused on signature uncertainty rather than data uncertainty; we stress that alternative data uncertainty assessment methods could be used where the perceptual understanding of the uncertainty sources is different.

The objectives of this paper were (1) to contribute to the community's awareness and knowledge of observational uncertainty in hydrologic signatures, (2) to propose a general method for estimating signature uncertainty, and (3) to demonstrate how typical uncertainty estimates translate to magnitude and distribution of signature uncertainty in two example catchments.

2 Catchments and data

We used two catchments: the Brue catchment in the UK, and the Mahurangi catchment in New Zealand. This enabled us to compare signature uncertainties in different locations and with different uncertainty sources. Both catchments have excellent rain-gauge networks that allowed us to quantify uncertainty in rainfall data, and there is some existing knowledge of the dominant hydrological processes.

2.1 The Mahurangi catchment

The Mahurangi is a 50 km² catchment in the North Island of New Zealand. It has a warm and humid climate, with mean annual rainfall of 1600 mm yr⁻¹. The catchment has hills and gently rolling lowlands, and land use is a mixture of pasture, native forest and pine plantation. The soils are clay loams,

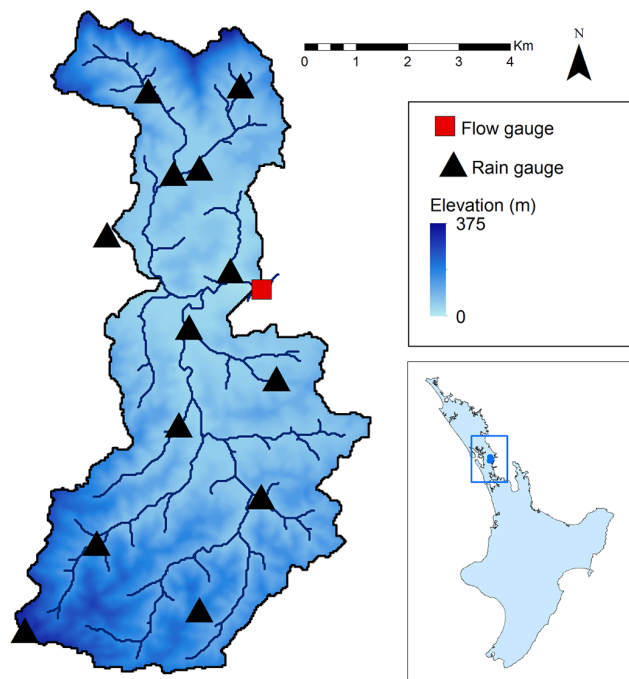


Figure 1. The Mahurangi catchment in New Zealand and the location of the rain gauges and the outlet flow gauge.

less than 1 m deep. Extensive data sets of rainfall and flow were collected during the Mahurangi River Variability Experiment 1997–2001 (Woods et al., 2001). We used hourly data from the 13 tipping bucket rain gauges and the catchment outlet flow gauge for 1 January 1998–31 December 2000 (Fig. 1). Missing rainfall values were available from a previous study that had infilled them using linear correlation with a nearby site. The flow gauge has a two-part triangular weir for low to medium flows, and a rated section with confining wooded banks for high flows. During the study period, the maximum recorded stage was 3.8 m, but the highest gauged stage is 2.7 m.

2.2 The Brue catchment

The predominantly rural 135 km² Brue catchment in south-west England has low grassland hills of up to 300 m a.s.l. (Fig. 2). Clay soils overlay alternating bands of permeable and impermeable rocks. An extensive precipitation data set consisting of 49 tipping-bucket rain gauges and radar data with 15 min resolution was created by the HYREX (Hydrological Radar Experiment) project (Moore et al., 2000; Wood et al., 2000). We used the data from 1 January 1994 to 31 December 1997, with a mean annual precipitation of 820 mm yr⁻¹. The extensive quality control described by Wood et al. (2000) included analyses of monthly cumulative rainfall totals and correlation analyses of timing errors. The detected errors included those caused by instrument malfunctions such as funnels blocked by debris and due to damage to

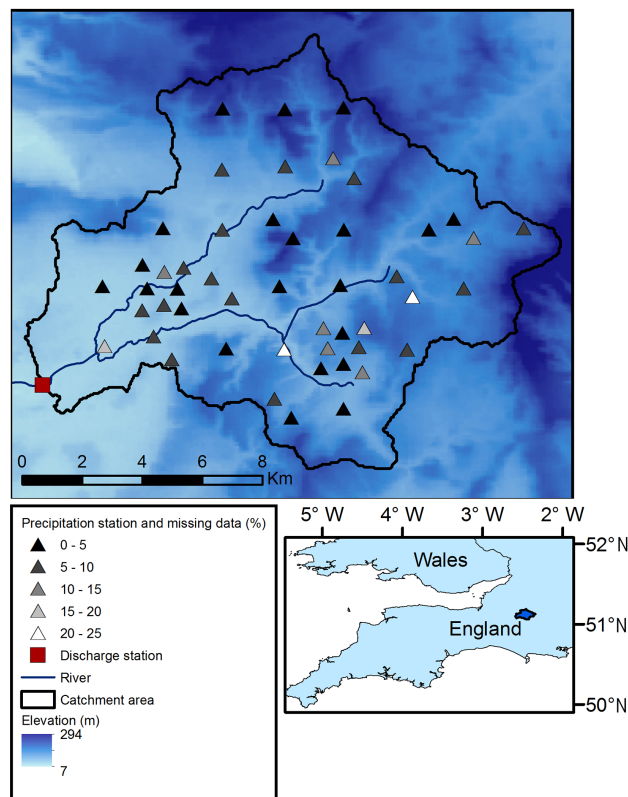


Figure 2. The Brue catchment in south-west England, and the location of the precipitation and discharge stations. The percent of missing values after quality control is given for each rain gauge.

electrical cables by mice. There were thus substantial periods of missing data resulting after quality control (Fig. 2), even for these carefully maintained rain gauges. We interpolated the missing precipitation values with inverse-distance weighting to obtain a complete data set for subsampling analysis.

The Lovington discharge station has a crump profile weir for low flows and a rated section above 0.6 m. The whole stage range was gauged and the water was below bankfull level for the chosen period. The stage–discharge relationship is affected by downstream summer weed growth resulting in scatter in the low-flow part of the rating curve.

3 Method: estimation of uncertainty in hydrological signatures

Uncertainty sources and distributions are application specific, so a general analytic solution for the signature uncertainty is not available. We suggest that Monte Carlo simulation provides a generally applicable and flexible method, by sampling equally likely possible realisations of the true data values (e.g. rainfall or flow series), conditioned on the observed data. Where multiple data sources are needed (e.g.

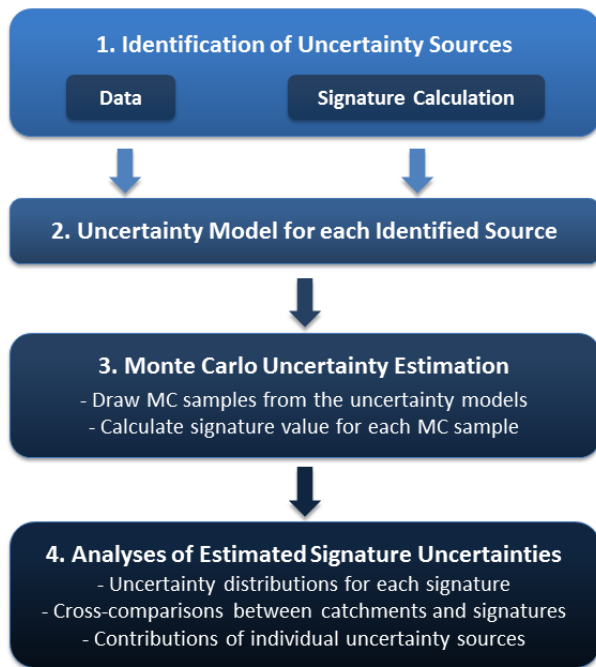


Figure 3. Schematic description of the method used for estimation of signature uncertainty.

calculation of runoff ratio), paired samples are used. Each sampled data series is used to calculate the signature value, and the values collated to give the signature distribution. This technique has previously been used to determine uncertainty in discharge (McMillan et al., 2010; Pappenberger et al., 2006) and rainfall (Villarini and Krajewski, 2008).

We applied the Monte Carlo (MC) approach to estimate uncertainty in signatures of different complexity. We used signatures that require rainfall and/or streamflow data only. Our method is described in Fig. 3 and has four steps: (1) identification of uncertainty sources in the data and from subjective decisions in signature calculation, (2) specification of uncertainty models for each uncertainty source either from the literature or catchment-specific analyses, (3) Monte Carlo sampling from the different uncertainty models and calculation of signature values for each sample, and (4) analyses of the estimated signature distributions, their dependence on individual uncertainty sources and comparisons between catchments. We analysed both the absolute and relative uncertainty distributions, where the relative uncertainties were defined using the signature value from the best-estimate discharge and precipitation.

3.1 Method: data uncertainty sources and their estimation

We first describe the error models for uncertainties relating to rainfall and flow. Further uncertainty sources that are specific to a particular signature are described separately in Sect. 3.2.

Table 1 presents a summary of all uncertainty sources together with literature references for the uncertainty estimation methods.

3.1.1 Catchment average rainfall

Identification of uncertainty sources

We considered catchment average rainfall estimated from a network of rain gauges, with three main uncertainty sources: point measurement uncertainty, spatial interpolation uncertainty and equipment malfunction uncertainty (e.g. unrecognised blocked gauges). Point uncertainty includes random errors such as turbulent airflow around the gauge (Ciach, 2003) and is usually assessed using co-located gauges. Systematic point errors are also common (e.g. undercatch due to wind loss, wetting loss, splash-in/out). In theory, systematic errors can be corrected for, but this is difficult and the site-specific information required is not always available (Sieck et al., 2007). In this study, we considered random point uncertainty but not systematic components. Interpolation errors occur when estimating catchment average rainfall from the point measurements at the gauges and depend on rainfall spatial variability (affected by topography, rain rate and storm type), density of gauges and network design.

Uncertainty estimation method

Point uncertainty was calculated using the formula derived by Ciach (2003) from a study of 15 co-located tipping bucket rain gauges over 12 weeks:

$$\sigma = 0.0035 + 0.2/r, \quad (1)$$

where r is the rainfall rate (in mmh^{-1}) and σ is the standard deviation of the relative error in 1 h measurements. No information about the distribution of the errors was given; we assumed a Gaussian distribution with zero mean. Interpolation uncertainty was estimated by subsampling from the gauge network. We subsampled using 1–13 (1–49) gauges for Mahurangi (Brue) for the basic signatures. For the combined rainfall–runoff signatures, three gauge densities were used: 1 gauge 45 km^{-2} , 1 gauge 10 km^{-2} and 1 gauge 5 km^{-2} , which equalled 1 (3), 5 (14) and 10 (28) gauges in Mahurangi (Brue) respectively. We also used the single-gauge case for Brue. Each subsampled data set was used to estimate areal average rainfall at each time step using Thiessen polygon interpolation. Equipment malfunction uncertainty was investigated for Brue, where a quality-assured set of reliable periods was available (Sect. 2.2). We repeated our analyses using both the raw and quality-controlled data sets.

Table 1. Sources of uncertainty considered in this study and the methods used for estimation.

Variable/signature	Uncertainty sources	Estimation method	Reference if applicable
Rainfall	Point uncertainty	Normal distribution with σ a function of rain rate	Ciach (2003)
	Interpolation uncertainty	Subsampling from a dense network of rain gauges	
	Equipment malfunction	Rainfall data with/without QC	Wood et al. (2000)
Flow	Discharge uncertainty in gaugings	Analysis of stations with stable ratings	Coxon et al. (2015)
	Stage uncertainty in gaugings	Uniform distribution ± 5 mm	McMillan et al. (2012)
	Rating-curve uncertainty	Voting point likelihood method	McMillan and Westerberg (2015)
Recession analysis	Flow data time step	Tested hourly vs. daily	
	Seasonality of response	Tested using all data or split by season	Shaw and Riha (2012)
Rainfall–runoff threshold	Effects of base flow	Tested with/without base-flow separation	Gustard et al. (1992)
	Rainfall event definition	Tested with/without inclusion of smaller events	

3.1.2 Discharge data

Identification of uncertainty sources

We considered discharge as estimated from a measured stage series and a rating curve that relates stage to discharge. This is the most common method and is used at both our case study sites. The following are the main uncertainty sources.

1. Uncertainty in the gaugings (i.e. the measurements of stage and discharge used to fit the rating curve). Discharge uncertainty is typically larger; however, during high-flow gaugings, stage can change rapidly and its average may be difficult to estimate.
2. Approximation of the true stage–discharge relation by the rating curve. This is usually the dominant uncertainty (McMillan et al., 2012), especially when the stage–discharge relation changes over time. In both catchments, low to medium flows are contained within a weir, which constrains the uncertainty. However, for Brue considerable low-flow uncertainty remains as a consequence of seasonal vegetation growth.

Uncertainty in the stage time series was not assessed apart from correcting obvious outliers. For Brue, occasional periods where stage data had been interpolated linearly from lower-frequency measurements were excluded from the recession analysis.

Uncertainty estimation method

We used the voting point likelihood method to estimate discharge uncertainty by sampling multiple feasible rating curves (McMillan and Westerberg, 2015). In brief, discharge gauging uncertainty was approximated by logistic distribution functions based on an analysis of 26 UK flow gauging stations with stable rating sections (Coxon et al., 2015). This analysis gave 95 % relative error bounds of 13–14 % for high flow and of 30–40 % for low flow (noting that the logistic distribution is heavy-tailed). Stage gauging uncertainty was ap-

proximated by a uniform distribution of ± 5 mm, a mid-range value based on previous studies (McMillan et al., 2012).

Rating-curve uncertainties, including extrapolation and temporal variability, were jointly estimated using Markov chain Monte Carlo (MCMC) sampling of the posterior distribution of rating curves consistent with the uncertain gaugings. The voting point likelihood draws on previous methods that account for multiple sources of discharge uncertainty (Juston et al., 2014; Krueger et al., 2010; McMillan et al., 2010; Pappenberger et al., 2006). The rating-curve forms were based on the official curves, where Mahurangi had a three-segment power law curve and Brue a two-segment power law curve (for the range of flows analysed here). The power law parameters and the breakpoints were treated as parameters for estimation.

3.2 Method: calculation of hydrological signatures with uncertainty

3.2.1 Basic signatures

A set of signatures describing different aspects of the rainfall–runoff behaviour were calculated (Table 2). We used signatures describing flow distribution, event characteristics, flow dynamics and rainfall; flow timing would be less affected by the data uncertainties studied here. Only data uncertainty (i.e. no subjective decisions) was considered for the basic signatures.

3.2.2 Recession analysis

Recession analysis is widely used to study the storage–discharge relationship of a catchment (Hall, 1968; Tallaksen, 1995), which gives insights into the size, heterogeneity and release characteristics of catchment water stores (Clark et al., 2011; Staudinger et al., 2011). We used the established method of characterising the relationship between flow and its time derivative. In the theoretical case where flow Q is a power function of storage, and evaporation is negligible, the relationship is

Table 2. Basic rainfall–runoff signatures included in the study. All signatures are calculated on hourly data unless otherwise specified.

	Signature	Name	Description	Unit
Flow distribution	Q_{MEAN}	Mean flow	Mean flow for the analysis period	mm h^{-1}
	$Q_{0.01}, Q_{0.1}, Q_1, Q_5, Q_{50}, Q_{85}, Q_{95}, Q_{99}$	Flow percentiles	Low- and high-flow exceedance percentiles from the FDC	mm h^{-1}
Event frequency and duration	Q_{HF}	High-flow event frequency	Average number of daily high-flow events per year, with a threshold of 9 times the median daily flow (Clausen and Biggs, 2000)	yr^{-1}
	Q_{HD}	High-flow event duration	Average duration of daily flow events higher than 9 times the median daily flow (Clausen and Biggs, 2000)	days
	Q_{LF}	Low-flow event frequency	Average number of daily low-flow events per year, with a threshold of 0.2 times the mean daily flow (Olden and Poff, 2003, they used a 5 % threshold)	yr^{-1}
	Q_{LD}	Low-flow event duration	Average duration of daily flow events lower than 0.2 times the mean daily flow (see Q_{LF})	days
Flow dynamics	BFI	Base-flow index	Contribution of base flow to total streamflow, calculated from daily flows using the <i>Flood Estimation Handbook</i> method (Gustard et al., 1992)	–
	S_{FDC}	Slope of the normalised FDC	Slope of the FDC between the 33 and 66 % exceedance values of streamflow normalised by its mean (Yadav et al., 2007)	–
	Q_{CV}	Overall flow variability	Coefficient of variation in streamflow, i.e. standard deviation divided by mean flow (Clausen and Biggs, 2000; Jowett and Duncan, 1990)	–
	Q_{LV}	Low-flow variability	Mean of annual minimum flow divided by the median flow (Jowett and Duncan, 1990)	–
	Q_{HV}	High-flow variability	Mean of annual maximum flow divided by the median flow (Jowett and Duncan, 1990)	–
	Q_{AC}	Flow autocorrelation	Autocorrelation for 1 day (24 h) Used by Euser et al. (2013) and Winsemius et al. (2009)	–
Rainfall–runoff	RR	Total runoff ratio	Total runoff divided by total precipitation	–
Rainfall	P_{MA}	Mean annual precipitation	Mean annual catchment average precipitation	mm yr^{-1}
	P_{SD}	Standard deviation of hourly precipitation	Standard deviation of catchment average precipitation	mm h^{-1}

$$d\hat{Q}/d\hat{Q}dt = -\hat{Q}^b/T_0, \quad (2)$$

where $\hat{Q} = Q/Q_0$ is flow scaled by the median flow Q_0 . T_0 and b are found by plotting $-dQ/dt$ against Q on logarithmic axes; b is the slope and T_0 is derived from the intercept.

T_0 is the characteristic recession time at the median flow. b indicates nonlinearity of response: $b = 1$ implies a linear reservoir, $b > 1$ implies greater nonlinearity or multiple wa-

ter stores with different drainage rates (Clark et al., 2009; Harman et al., 2009).

Subjective decisions in recession analysis include how recession periods are defined, the delay after rainfall used to eliminate quickflow, the data time step, and whether to extend time steps during low flows to improve flow derivative accuracy (Rupp and Selker, 2006). A moving average can be used to smooth diurnal flow fluctuations. Options to estimate T_0 and b include linear regression, total least squares regression to allow for errors in both variables (Brutsaert and Lopez, 1998), or regression on binned data values (Kirchner, 2009). If water distributions vary seasonally, the results are sensitive to whether recessions are fitted using all data combined or split by season, month or event (Shaw and Riha, 2012).

We assessed subjective uncertainty in recession analysis by comparing the distributions of recession parameters b and T_0 in the following cases, which in our experience have the most potential to affect recession parameter values: (1) using hourly vs. daily flow data, and (2) calculating recession parameters using all data combined vs. calculating parameters by season and taking the mean.

3.2.3 Thresholds in rainfall–runoff response

Threshold behaviour in the relationship between rainfall depth and flow contributes to hydrological complexity (Ali et al., 2013) and exerts a strong control on model predictions. Threshold identification depends on both rainfall and flow data, making it a good candidate to test the effect of multiple uncertainty sources. Rainfall–runoff thresholds have been found in many catchments (Graham et al., 2010b; Tromp-van Meerveld and McDonnell, 2006a, b), including the Mahurangi (McMillan et al., 2011, 2014). We only studied threshold signatures in Mahurangi, as Brue did not display any rainfall–runoff threshold.

The signatures that we used were threshold location (in millimetres of rain per event) and threshold strength. We quantified threshold strength based on the method of McMillan et al. (2014). Storm events were identified and event rainfall was plotted against event runoff. Strong threshold behaviour was defined as an abrupt increase in slope of the event rainfall–runoff relationship. This attribute was tested by fitting each data set with two intersecting lines (a “broken-stick” fit), using total least squares to optimise the slopes and intersect. The corresponding null hypothesis was that the two lines have equal slopes. This test returns a z statistic which quantifies the strength of evidence for the alternative hypothesis: where the absolute value exceeds 1.96, the null hypothesis can be rejected at the 5 % level.

We defined events based on McMillan et al. (2011), such that events require at least 2 mm h^{-1} or 10 mm day^{-1} of precipitation, and are deemed to end either when a new event begins, or 5 days after the last rainfall. Events are distinct if they are separated by 12 dry hours. We assessed uncertainty

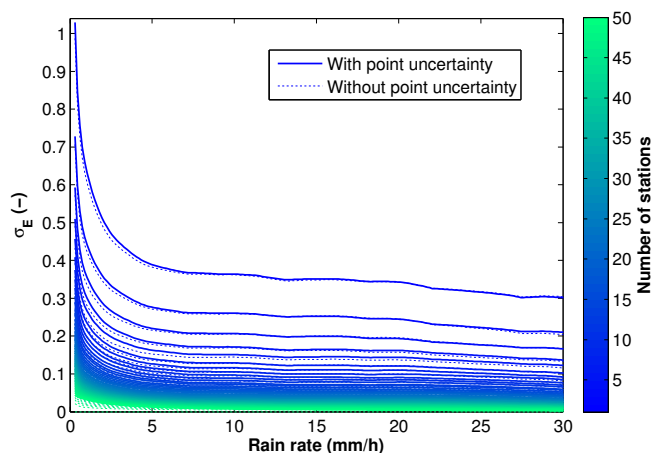


Figure 4. Standard deviation of the relative rainfall error as a function of rain rate for different numbers of subsampled stations for 1000 Monte Carlo realisations for the Brue catchment, with and without point uncertainty.

due to subjective decisions by using or not using base-flow separation and by changing the event definition to include smaller events, where at least 1 mm h^{-1} or 5 mm day^{-1} of precipitation fell. We used the base-flow separation method of Gustard et al. (1992), which interpolates linearly between 5-day flow minima to create the base-flow series.

4 Results

4.1 Estimated uncertainty in rainfall and discharge data

4.1.1 Rainfall data

The standard deviation of the error in catchment average rainfall resulting from different numbers of subsampled stations was calculated. It was plotted as a function of hourly rain rate using the moving-average window method of Villarini and Krajewski (2008), with a bandwidth equal to 0.7 times the rain rate at the centre of the window (results for Brue in Fig. 4). The errors decreased with rain rate and there was a large initial decrease in the error when the number of subsampled stations increased from 1 to around 5. The point uncertainty only had a small effect on the error standard deviation.

The number of gauges had a large effect on the estimated mean annual precipitation; if only one rain gauge was used, there was a range of $200\text{--}300 \text{ mm yr}^{-1}$ that would clearly affect catchment water balance analyses (Fig. 5). One rain gauge in a catchment of this size is still well above the WMO-recommended station density of 1 gauge 575 km^{-2} in hilly terrain (WMO, 2008). Here there was also a large initial decrease in the range when the number of gauges increased to around five. But, even when three or four gauges

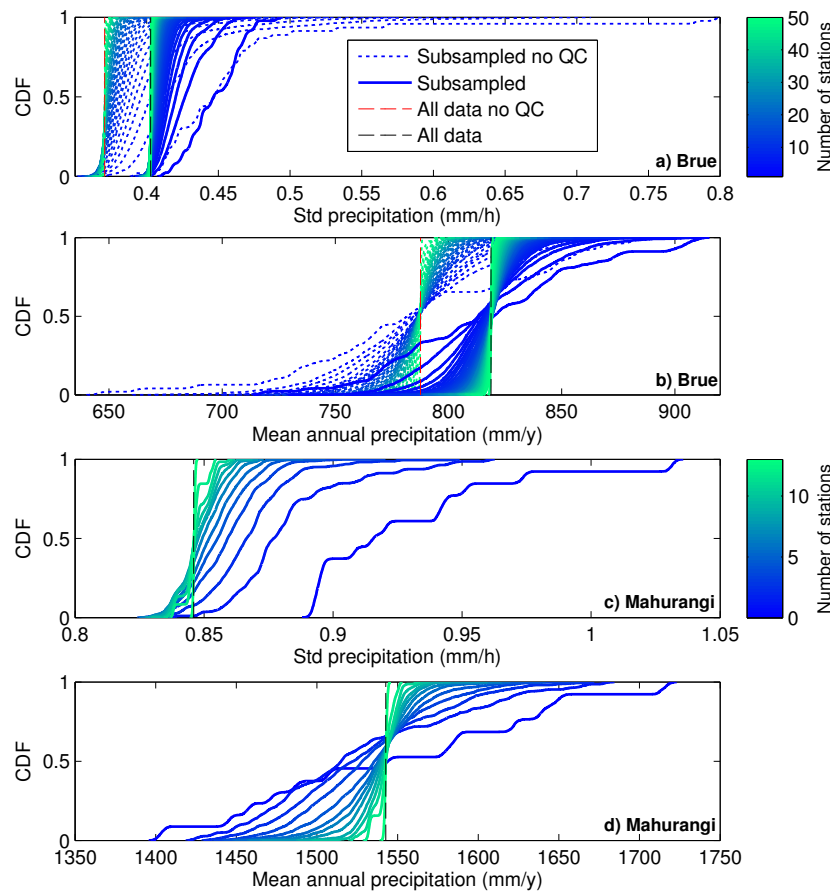


Figure 5. (a and c) standard deviation of hourly precipitation and, (b and d) mean annual precipitation for different numbers of subsampled stations. For Mahurangi, results are shown for the period without missing discharge values. Point measurement uncertainty was included and we used 4000 Monte Carlo realisations.

were used (1 gauge $12\text{--}16\text{ km}^{-2}$) for Mahurangi, there was a $1430\text{--}1660\text{ mm yr}^{-1}$ range in mean annual precipitation. When the non-quality-controlled data set was used for Brue (Fig. 5a and b), there was a decrease in both mean annual values and standard deviation. At the same time, the range in standard deviation increased because stations with erroneously high or missing precipitation values were retained (blocked rain gauges were a particular problem in this catchment; Wood et al., 2000). The estimated precipitation standard deviation was uncertain for one subsampled gauge in Mahurangi (Fig. 5c), where gauges were located in both the wettest and driest parts of the catchment.

4.1.2 Discharge data

The estimated rating-curve uncertainty is shown in Fig. 6, with the corresponding flow percentile uncertainty summarised using boxplots. The 5–95 percentile uncertainty bounds enclose almost all of the uncertain gaugings, apart from a small number of outliers. Low-flow uncertainty is larger in Brue where vegetation growth affects the stability of

the stage–discharge relation. High-flow uncertainty is larger in Mahurangi where fewer, more scattered high-flow gaugings cause a wider range in the extrapolated flows. Mahurangi has a fast rainfall–runoff response with little base flow and peak-flow events that are infrequent but have large magnitudes (up to 11 mm h^{-1} ; Fig. 7a, right inset plot). Brue, by contrast, has a higher base flow and more peak-flow events of longer duration and lower magnitudes (up to 1 mm h^{-1} ; Fig. 7b, right inset plot). Large high-flow uncertainty is likely in catchments such as Mahurangi where peak flows occur seldom and last only a few hours – this makes reliable high-flow gauging practically difficult and rating-curve extrapolation likely necessary. The larger high-flow rating-curve uncertainty in Mahurangi (Fig. 6a) is reflected in a wider peak-flow uncertainty distribution (Fig. 7a, left inset plot). In Brue, the whole flow range is gauged and the high-flow rating-curve uncertainty is smaller (Fig. 6c), the peak-flow distribution has higher kurtosis with heavier tails (Fig. 7b, left inset plot).

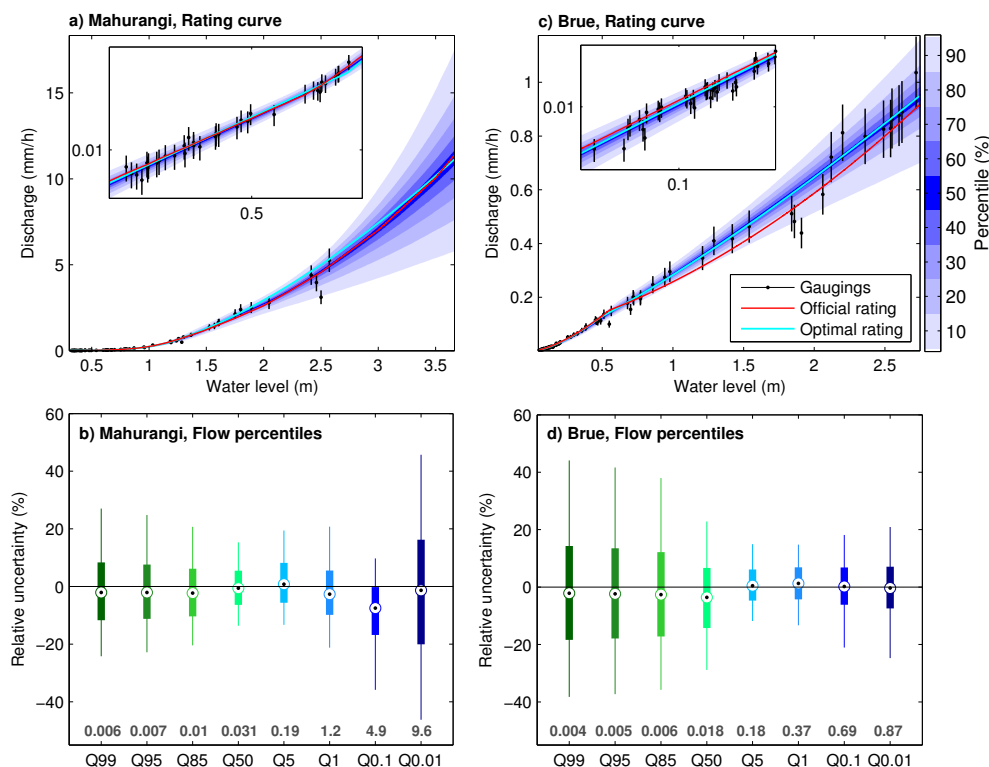


Figure 6. Estimated rating-curve uncertainty and uncertainty in flow percentiles for the Mahurangi (a and b) and Brue (c and d) catchments. Uncertainties are calculated relative to the optimal rating curve from the MCMC. For Brue the official rating curve is dissimilar to the optimal MCMC rating curve because it was calculated for a longer gauging data set starting in the 1960s, with considerably more variability. The rating curve is shown in linear space, with an inset plot in log space for the low-flow range. The flow percentiles for the optimal rating are given as hourly averages (in mm h^{-1}) at the bottom of the (b) and (d) figures. The boxplot whiskers extend to the 5 and 95 percentiles, and the box covers the interquartile range.

4.2 Estimated uncertainty in the hydrological signatures

4.2.1 Basic signatures

Flow percentile uncertainties mirrored those of the rating curves, with larger uncertainties in high-flow percentiles for Mahurangi and larger uncertainties in low-flow percentiles for Brue (Fig. 6). Uncertainty in mean discharge was around $\pm 10\%$ for both catchments; this is the 5–95 percentile interval, while the distributions are shown in Fig. 8. Signatures describing the flow variability (S_{FDC} , Q_{CV} , and Q_{AC}) had much higher uncertainties in Mahurangi ($\pm 20\text{--}50\%$), where there was a fast rainfall–runoff response and greater high-flow rating uncertainty. The uncertainty in the S_{FDC} was particularly large for Mahurangi because the rating curve had a breakpoint in the 33–66 percentile interval used to calculate the slope. Signatures describing the frequency and duration of high- and low-flow events (Q_{HF} , Q_{HD} , Q_{LF} , and Q_{LD}) had large uncertainties in both catchments ($\pm 10\text{--}35\%$). This arises because the event threshold is defined as a multiplier of the mean or median flow, and so the (uncertain) gradient of the rating curve greatly impacts on the flow percentile

equivalent to the threshold value. Frequency and duration signatures have alternatively had the event threshold defined directly as a flow percentile (Kennard et al., 2010; Olden and Poff, 2003); we suggest this is preferable as those signatures were insensitive to the uncertainties analysed here, apart from sometimes small effects when using daily averages.

4.2.2 Total runoff ratio

For the total runoff ratio, we tested the contribution of each uncertainty source by including or excluding different sources. We calculated total uncertainty (Fig. 8c, d, black bars) using different rain-gauge densities. Total uncertainty was approximately $\pm 15\%$ using a single rain gauge, decreasing slowly with more gauges. The distributions were largely unbiased when using quality-controlled data. The contribution of point precipitation uncertainty was minimal: excluding this source made no difference to the uncertainty distribution (Fig. 8, green bars). Precipitation uncertainty is therefore due to interpolation and was evaluated by excluding flow uncertainty and calculating the remaining uncertainty (Fig. 8, blue bars). This uncertainty was noticeable (approx-

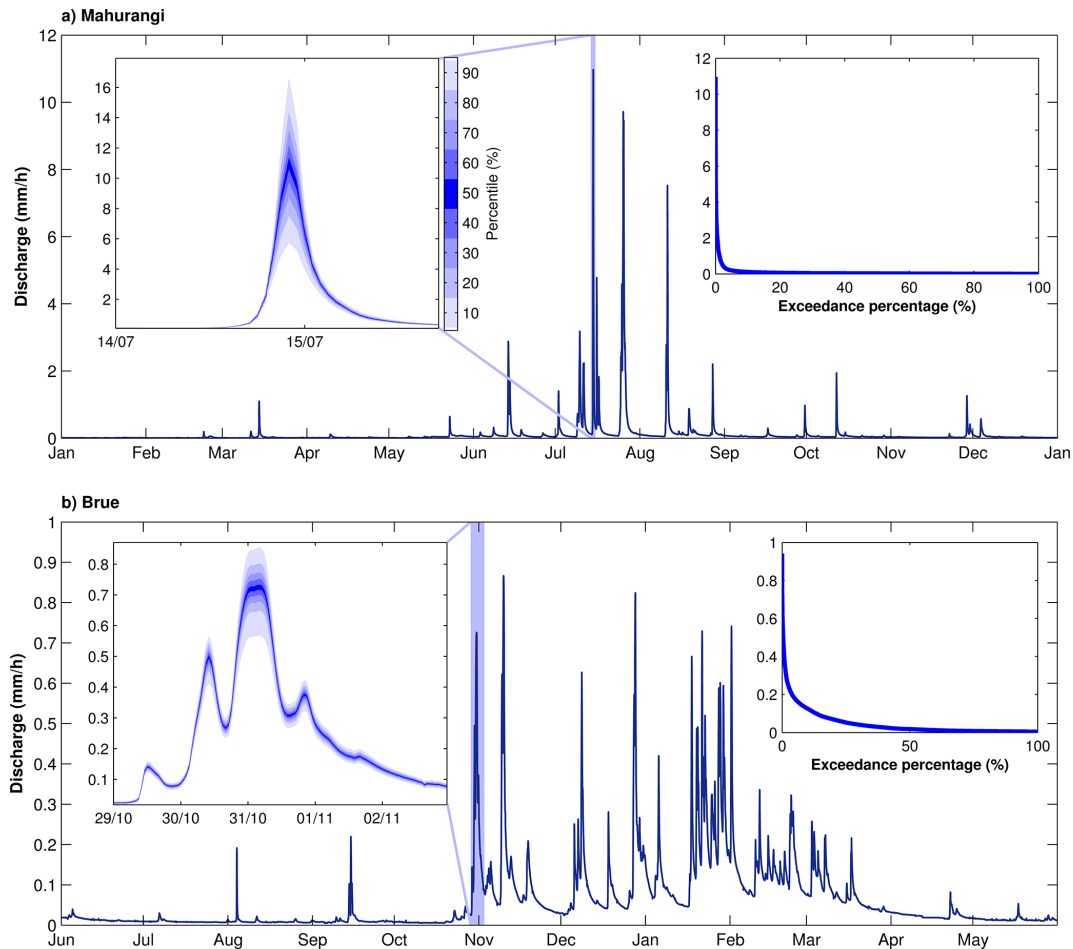


Figure 7. Discharge calculated using the optimal rating curve for 1998 for Mahurangi (a) and for 1994–1995 for Brue (b). The left inset plots show the discharge time series uncertainty distribution at an hourly scale for a peak-flow event in each catchment. The right inset plots show the flow duration curves for the full time series for each catchment. The y axis variable and unit is discharge (in mm h^{-1}) in all plots.

imately $\pm 10\%$ Mahurangi, $\pm 9\%$ Brue) for one gauge, but decreased quickly with more gauges and was negligible at a density of 1 gauge 5 km^{-2} . Total uncertainty was dominated by discharge uncertainty (dark blue bars) which was greater than precipitation uncertainty (blue bars). In the Brue catchment the effect of using non-quality-controlled data was assessed (red and purple bars) which increased and biased the uncertainty, particularly at low gauging densities.

4.2.3 Recession analysis

We tested the effect of data uncertainty on recession analysis results by plotting histograms of the recession parameters b (nonlinearity of recession shape) and T_0 (recession slope at median flow). We considered subjective uncertainty by using data at daily or hourly time steps and by calculating parameters using all data together or splitting by season and then taking parameter averages (Fig. 9).

Uncertainty in the recession descriptors was typically (1) greater for Brue than for Mahurangi, in particular for

hourly flow data, and (2) greater for hourly flow data than for daily flow data. Recessions are calculated from flow derivatives and are therefore affected by relative changes in flow (e.g. channel shape). The linear regression used to calculate the recession parameters is particularly sensitive to uncertainties in extreme low or high flows. The low-flow uncertainty at Brue resulting from summer weed growth creates higher uncertainties at that site. Daily flow values are based on an aggregation of measured values and are therefore more robust to data uncertainty. However, using daily data in small catchments can mask details of the recession shape, as the slope can change markedly during a single day. In our case, this difference caused shifts in the parameter distributions between hourly and daily data and would therefore affect our ability to compare parameter values between catchments. For example, b values were similar in the two catchments when using daily data, but different when using hourly data; and the converse is true for T_0 . This was caused by differences

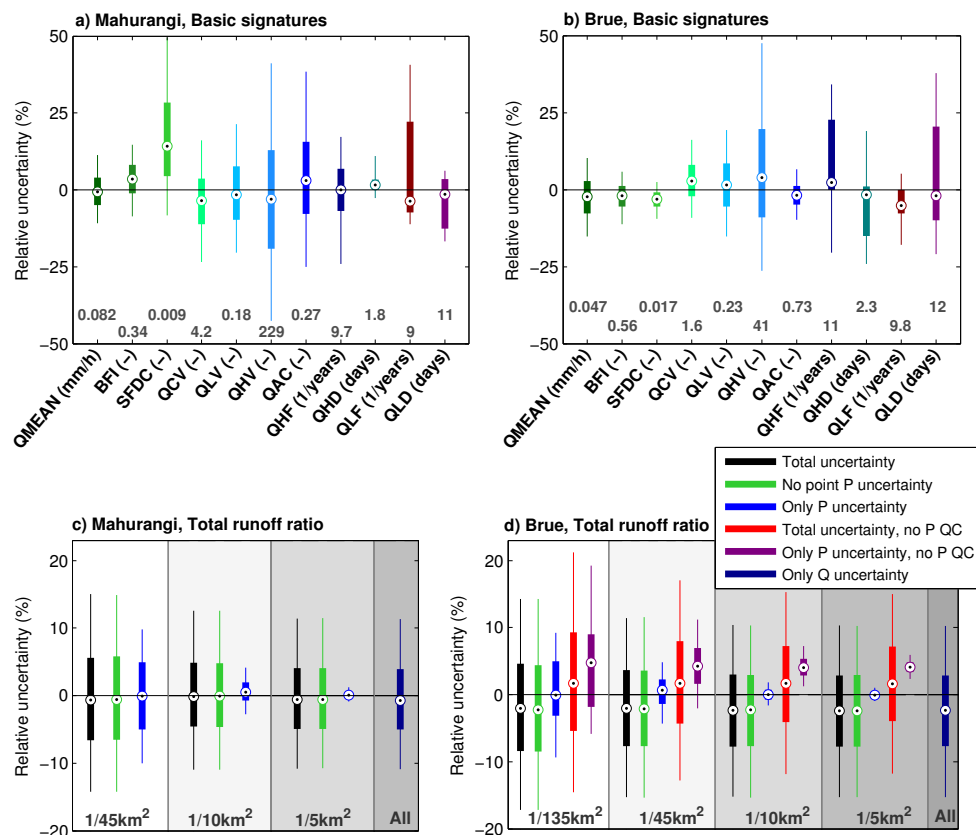


Figure 8. Relative uncertainty in basic signatures as a percentage of the signature values calculated with the optimal rating curve from the MCMC. The boxplot whiskers extend to the 5 and 95 percentiles, and the box covers the interquartile range. The signature values for the optimal rating curves are given at the bottom of the (a and b) panels.

in the hydrograph such as low-flow fluctuations in Brue and flashy peak-flow events in Mahurangi.

Recession parameters calculated per season were highly uncertain in Brue for the T_0 parameter. This was due to some seasons having very few recession data points and therefore the fitted regression relationships being sensitive to changes in these points. Recession parameters were highly sensitive to subjective decisions in defining recession periods, as also found by Stoelzle et al. (2013). Such definitions could result in particular recession periods being included or excluded from the analysis depending on the sampled rating curve. When the excluded periods included extreme high- or low-flow values, this could significantly skew the fitted parameters and therefore give multimodal parameter distributions according to the particular set of valid recession periods. For the daily timescale, the starting hour used in calculating the daily averages could also have a large effect on the resulting recession parameters.

4.2.4 Thresholds in rainfall–runoff response

We tested for uncertainty in the estimated threshold in the event rainfall–runoff relationship in Mahurangi using box-

plots of the threshold location and strength under different uncertainty scenarios (Fig. 10). The threshold broken-stick fit is illustrated in Fig. 10a for the best-estimate data (in blue) and for an example realisation with uncertainty (in grey).

The threshold was 65 mm when using best-estimate rainfall and flow data. Total uncertainty was a largely unbiased distribution with a range of ~ 20 mm. Total uncertainty was a combination of flow uncertainty (slight low bias) with rainfall interpolation uncertainty (slight high bias). Point rainfall uncertainty was not important when using multiple gauges. Threshold location was highly sensitive to the number of rain gauges used: using only one gauge created a very wide uncertainty distribution. As with the rainfall uncertainty analysis, there was a large decrease in the uncertainty when increasing to five gauges (Sect. 4.1.1). The use of base-flow separation did not greatly change the median threshold but did increase the range. Event definition parameters had little effect on the threshold uncertainty.

Threshold strength was defined using a change-in-slope statistic where higher values indicate a stronger threshold. Considering flow or rainfall uncertainty weakened the calculated threshold. For flow uncertainty this was due to the op-

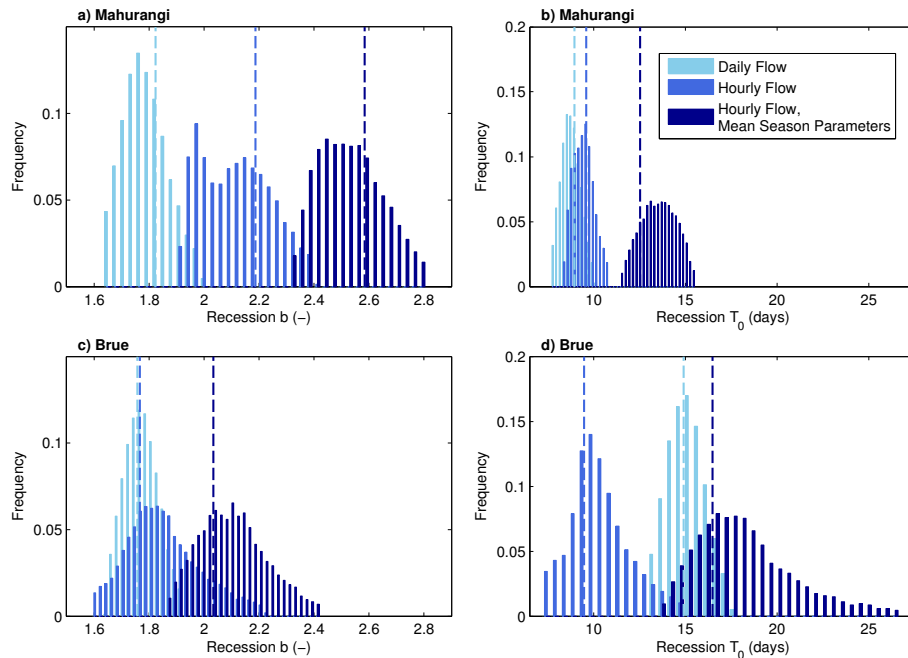


Figure 9. Histograms of recession parameter distributions, where parameters are calculated using (1) daily flow data, (2) hourly flow data, and (3) hourly flow data where recession parameters are calculated per season and then averaged. Dashed lines show the parameter values from the optimal MCMC rating curve. Distributions are truncated at the 2.5 and 97.5 percentiles.

timal rating curve having its first breakpoint and mid-section slope above the median values of the sampled rating-curve distribution; both of which were associated with a stronger threshold. As with the S_{FDC} , this shows the strong impact of the rating-curve breakpoint locations on signature uncertainty. For rainfall, uncertainty adds noise to the event rainfall depth and therefore corrupts the estimated rainfall–runoff relationship, weakening the threshold. Consequently, the number of rain gauges is an important control on estimated threshold strength, with fewer gauges causing a weakened threshold. As the underlying threshold was strong, the case of one rain gauge was the only scenario that could cause the threshold statistic not to be significant at the 5% level. However, in other catchments with weaker thresholds, lack of good rainfall data is likely to result in thresholds being missed. Using base-flow separation increased the derived threshold strength, as it typically reduced runoff depths for smaller events below the threshold. Event definition had only a small effect on derived threshold strength; when smaller events were included the threshold strength statistic increased, as the fit was based on a greater number of points.

4.3 Summary of the signature uncertainties

To summarise our results, we tabulated examples of each signature type together with their dominant uncertainty sources and summary statistics of the total uncertainty distribution, for each catchment (Table 3). Our aim is to allow for an easy comparison of the signature uncertainties in our study with

those of other studies. We therefore chose commonly used distribution statistics, i.e. the first three distribution moments (mean, standard deviation, skewness) and the half-width of the 5–95 percentile range, which is commonly quoted in uncertainty studies (e.g. McMillan et al., 2012). We hope that authors of future studies will consider using similar statistics, to enable the community to compile a generalised understanding of signature uncertainties across different catchments, scales and landscapes.

5 Discussion

5.1 Uncertainty in different types of signatures

Uncertainty distributions were highly variable between signatures and therefore the impact of the uncertainty depends on which signatures are used (Table 3). There was greater uncertainty in signatures that use high-frequency responses (e.g. variations over short timescales, thresholds based on event precipitation totals), subsets of data more prone to measurement errors (e.g. extreme high and low flows, Q_{HV} and Q_{99}), and signatures based on small numbers of values (e.g. seasonal recession characteristics in the Brue catchment). Signatures describing flow variability were uncertain in the Mahurangi catchment, which has a flashy rainfall–runoff response and where stage significantly exceeded the highest gaugings leading to large discharge uncertainty at high flows. This is likely to be a common situation in small,

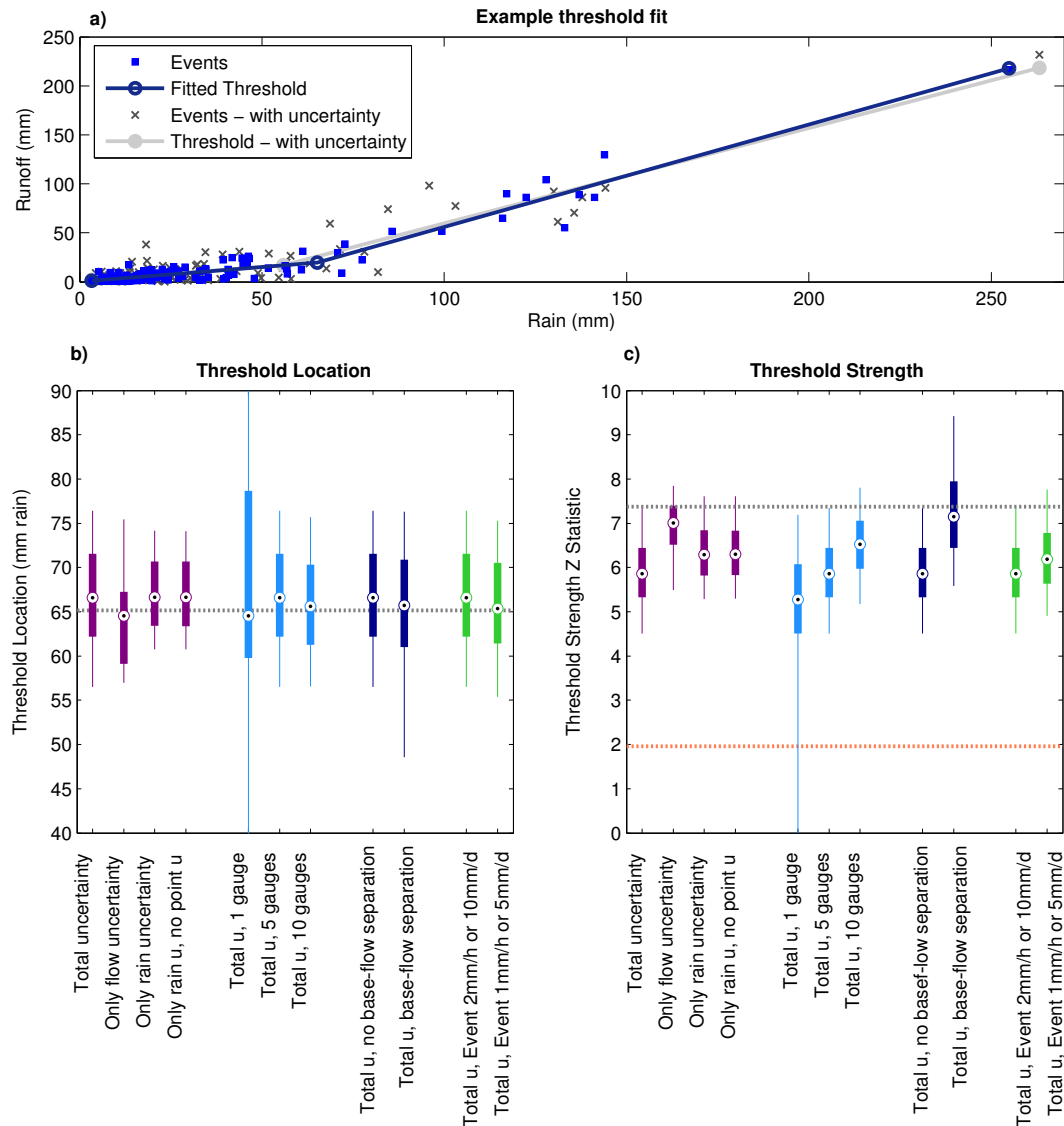


Figure 10. (a) Example of the threshold fitting procedure without (blue) and with (grey, one-rain-gauge scenario) uncertainty (u). Boxplots of (b) threshold location and (c) threshold strength in the Mahurangi catchment, under different data and subjective uncertainty scenarios. Horizontal grey lines show baseline signature values from the optimal rating-curve and precipitation data. The orange line in Fig. 9c shows the value above which the change in slope of the rainfall–runoff relationship is significant at the 5 % level. Boxplot whiskers for the uncertainty distribution in the one-rain-gauge scenario are truncated for clarity. The total uncertainty scenario used 1 raingauge 10km⁻².

fast-responding catchments with few high-flow events, due to the practical difficulties of gauging during such short time windows. There was lower uncertainty in signatures that use spatial or temporal averages (e.g. total runoff ratio and BFI). Uncertainty in signatures calculated from averages depends on the type of data uncertainty, e.g. random errors are reduced by averaging, but some systematic errors such as rainfall undercatch are not. Rating-curve uncertainty is an intermediate case as it depends on error magnitudes that vary across the flow range. Some signatures are sensitive to particular types of data uncertainty. For example, in Mahurangi high uncertainty in S_{FDC} relates to uncertainty in rating-curve

shape, and in Brue high uncertainty in Q_{LD} relates to uncertainty of the low-flow rating in combination with the shape of the hydrograph. Signatures that describe the rainfall–runoff relationship for individual events (e.g. threshold location and strength) were particularly sensitive to precipitation uncertainties for low gauging densities.

Signatures can be designed to be robust to some data uncertainty sources. A clear example is for signatures describing the frequency and duration of high and low-flow events. If these events are defined using a threshold defined as a multiplier of the mean or median flow, they are highly sensitive to rating-curve uncertainty. If, instead, the events are

Table 3. Dominant uncertainty sources and uncertainty characteristics.

Signature type	Catchment ^a	Dominant uncertainty source	Uncertainty characteristics				
			Half-width of 5–95 percentile range (%)	Mean (bias) (%)	SD (%)	Skewness (–)	
Flow distribution	Average flow conditions (Q_{MEAN})	M	Rating-curve uncertainty	11.1	–0.4	6.8	0.32
		B	Rating-curve uncertainty	12.7	–2.4	7.7	–0.03
	Low-flow percentiles (Q_{95})	M	Discharge gauging uncertainty	23.8	–1.2	14.6	0.47
		B	Rating-curve uncertainty	39.5	–1.1	23.8	0.45
	High-flow percentiles ($Q_{0.1}$)	M	Rating-curve uncertainty	22.8	–8.3	16.6	1.54
		B	Rating-curve uncertainty	19.6	0.0	12.0	0.13
Events	Event frequency and duration (Q_{HD})	M	Threshold value, which depends on rating-curve uncertainty	6.9	2.3	3.3	1.30
		B	Threshold value, which depends on rating-curve uncertainty	21.6	–5.1	13.1	0.57
Flow dynamics	Base-flow index (BFI)	M	Rating-curve uncertainty	11.6	3.4	7.1	–0.11
		B	Rating-curve uncertainty	8.5	–2.3	5.1	–0.19
	Slope of flow duration curve (S_{FDC})	M	Rating-curve breakpoint location	28.8	16.9	17.4	0.46
		B	Rating-curve uncertainty	6.0	–3.2	3.7	–0.18
	Variability of extreme flows (Q_{HV})	M	Rating-curve uncertainty	41.9	–1.0	30.4	2.30
		B	Rating-curve uncertainty	37.0	6.5	23.0	0.75
Recession analysis (b hourly)	M	Calculation time step	9.9	–3.1	6.3	0.38	
	B	Rating-curve uncertainty	14.9	5.1	8.9	0.72	
Rainfall–runoff	Total runoff ratio (RR^{b})	M	Rating-curve uncertainty	14.6	–0.3	9.0	0.26
		B	Rating-curve uncertainty	13.3	–2.0	8.1	0.02
	Rainfall–runoff threshold (threshold location ^c)	M	Rainfall interpolation uncertainty	15.3	2.9	15.2	5.88
		B	–	–	–	–	–
Rainfall	Mean annual precipitation (P_{MA}^{b})	M	Interpolation uncertainty	10.0	0.3	5.7	0.22
		B	Interpolation uncertainty (equipment malfunction)	4.6	–0.4	2.7	0.34
	Standard deviation of precipitation (P_{SD}^{b})	M	Interpolation uncertainty	8.0	9.5	4.4	1.55
		B	Interpolation uncertainty (equipment malfunction)	4.9	4.6	2.9	0.67

^a M: Mahurangi, B: Brue.

^b These signatures were calculated using 1 gauge 45 km^{–2} and including point error.

^c This signature was calculated for the total uncertainty scenario in Fig. 10.

directly defined using a flow percentile threshold, they were little affected by rating-curve uncertainty (see Sect. 4.2.1). This simple change in signature definition reduces sensitivity to data uncertainty. We found that any cut-offs imposed in signature calculation, such as event or recession definition criteria, could have a strong and unpredictable effect on signature uncertainty. For example, rainfall–runoff threshold strength calculations were particularly sensitive to large storm events, which control the gradient of the second line

in the “broken stick”. If such events were conditionally excluded (e.g. classified as disinformative and removed when runoff exceeded rainfall; which depends on the rating curve and rain gauge(s) selected), the resulting uncertainty could overwhelm any other uncertainty sources. We suggest that signatures including cut-off type definitions should be carefully evaluated and the cut-offs removed if possible.

5.2 Method limitations and future developments

The quality of signature uncertainty estimates relies on accurate assessment of data uncertainty and therefore on sufficient information. An example of insufficient uncertainty information would be for a gauge where out-of-bank flows occur, but there is no information on the out-of-bank rating. As discussed by Juston et al. (2014) for rating-curve uncertainty, it is essential to understand whether data errors are random or systematic, aleatory or epistemic. In our study, point rainfall errors were not important in signature uncertainty, but there is scope to improve their representation as systematic or random (e.g. systematic wind-related undercatch, or random turbulence effects). However, quantification of these errors is not straightforward (Sieck et al., 2007).

We recognise that the inferred distributions of signature uncertainty will be sensitive to the assumptions and methods used to estimate distributions of data uncertainty. This introduces some subjectivity into the uncertainty estimation and it is therefore important to make the assumptions explicit and motivate method choices by the perceptual understanding of the uncertainty sources. For example, the optimal methods for estimating rating-curve uncertainty under typical time-varying, poorly specified errors remain an active debate in the hydrological community. Using an informal likelihood, as we did, rather than a formal statistical likelihood can be more robust to multiple epistemic error sources but can also be criticised for not obeying a formal statistical framework (as discussed by McMillan and Westerberg, 2015, and Smith et al., 2008). Future progress in understanding how perceptual models and data jointly contribute to system identification may help to resolve this dichotomy (Gupta and Nearing, 2014). At present, we recognise that uncertainty distributions are more subjective in signatures that emphasise poorly described aspects of data uncertainty such as out-of-bank flows.

For signatures calculated over a long time period, it may be appropriate to incorporate nonstationary error characteristics, such as rating-curve shifts or the example explored by Hamilton and Moore (2012) where the best-practice method for infilling discharge values under ice changed over time. The time period used is important if signatures are used for catchment classification: an unusual event such as a large flood may shift the signature values (Casper et al., 2012). Additional uncertainty sources can be important in other catchments, such as catchment boundary uncertainty and flow by-passing the gauge (Graham et al., 2010a).

5.3 Implications for use of signatures in hydrological analyses

Our results are pertinent to any hydrological analysis that uses signatures to assess catchment behaviour. Examples of applications whose reliability could be affected by signature uncertainty include testing bias correction of a climate model using signatures in a coupled hydrological model (Casper

et al., 2012), predicting signatures in ungauged catchments (Zhang et al., 2014), classifying catchments using flow complexity signatures (Sivakumar et al., 2013), and assessing spatial variability of hydrological processes (McMillan et al., 2014). In some cases, absolute signature values are not used, rather it is the pattern or gradient over the landscape, or trend over time that is important. Data uncertainties may obscure such patterns depending on the magnitude of the uncertainty in relation to the strength of the measured pattern. The range of signature values found by McMillan et al. (2014) across Mahurangi was large compared to the uncertainty magnitudes found in this study. This suggests that the conclusions regarding the signature patterns would still hold, assuming that the uncertainty at the catchment outlet is representative for the internal subcatchments. Some subjective uncertainty sources may not be relevant in catchment comparisons, as choices such as how to define recession periods or whether to do base-flow separation can be chosen consistently. However, subjective uncertainties can still change the conclusions drawn such as the cut-offs described above, and as discussed in Sect. 4.2.3 where daily data suggested similar recession b parameters in Mahurangi and Brue but hourly data showed strong differences.

When signatures are used as a performance measure in model calibration (e.g. Blazkova and Beven, 2009) reliable uncertainty estimates are crucial so that the model is not overfitted. Previous studies have quantified data and signature uncertainty using upper and lower bounds (e.g. fuzzy estimates used by Coxon et al., 2013; Hrachowitz et al., 2014; Westerberg et al., 2011). However, this does not allow for the straightforward estimation of uncertainty in all types of signatures that is made possible by our method of generating multiple feasible realisations of rainfall and discharge time series.

6 Conclusions

This study investigated the effect of uncertainties in data and calculation methods on hydrological signatures. We present a widely applicable method to evaluate signature uncertainty, and show results for two example catchments. The uncertainties were often large (i.e. typical intervals of ± 10 – 40 % relative uncertainty) and highly variable between signatures. It is therefore important to consider uncertainty when signatures are used for hydrological and ecohydrological analyses and modelling. Uncertainties of these magnitudes could change the conclusions of analyses such as cross-catchment comparisons or inferences about dominant processes.

Although we show that significant uncertainty can exist in hydrological signatures, we do not intend that this paper has a negative message. Consideration of uncertainty is equivalent to extracting the signal from noisy data and not overestimating the information content in the data. As argued by Pappenberger and Beven (2006) and Juston et al. (2013), ig-

norance is not bliss when it comes to hydrological uncertainty; incorporation of uncertainty analysis leads to many advantages including more reliable and robust conclusions, reduction in predictive bias, and improved understanding. In particular, we hope that this paper encourages others to estimate data uncertainty in their catchments, either individually or by reference to typical uncertainty magnitudes, to design diagnostic signatures and hypothesis testing techniques that are robust to data uncertainty and to evaluate analysis results in the context of signature uncertainty.

Acknowledgements. The research leading to these results has received funding from the People Programme (Marie Curie Actions) of the European Union's Seventh Framework Programme FP7/2007-2013/ under REA grant agreement no. 329762, by NIWA under the Hazards Research Programme 1 (2014/15 SCI) and by the Ministry of Business, Innovation and Employment, NZ, through contract C01X1006 Waterscape. We thank Alberto Viglione, Hoshin Gupta and Nataliya Le Vine for their constructive reviews which helped to improve this paper.

Edited by: N. Romano

References

- Ali, G., Oswald, C. J., Spence, C., Cammeraat, E. L. H., McGuire, K. J., Meixner, T., and Reaney, S. M.: Towards a unified threshold-based hydrological theory: necessary components and recurring challenges, *Hydrol. Process.*, 27, 313–318, 2013.
- Archer, D. and Newson, M.: The use of indices of flow variability in assessing the hydrological and instream habitat impacts of upland afforestation and drainage, *J. Hydrol.*, 268, 244–258, 2002.
- Bengtsson, L. and Milloti, S.: Extreme storms in Malmo, Sweden, *Hydrol. Process.*, 24, 3462–3475, 2010.
- Blazkova, S. and Beven, K. J.: A limits of acceptability approach to model evaluation and uncertainty estimation in flood frequency estimation by continuous simulation: Skalka catchment, Czech Republic, *Water Resour. Res.*, 45, W00B16, doi:10.1029/2007WR006726, 2009.
- Blöschl, G., Sivapalan, M., Wagener, T., Viglione, A., and Savenije, H. H. G. (Eds.): *Runoff Prediction in Ungauged Basins: Synthesis Across Processes, Places and Scales*, Cambridge University Press, Cambridge, 2013.
- Brown, J. D.: Knowledge, uncertainty and physical geography: towards the development of methodologies for questioning belief, *T. I. Brit. Geogr.*, 29, 367–381, 2004.
- Brutsaert, W. and Lopez, J. P.: Basin-scale geohydrologic drought flow features of riparian aquifers in the southern Great Plains, *Water Resour. Res.*, 34, 233–240, 1998.
- Casper, M. C., Grigoryan, G., Gronz, O., Gutjahr, O., Heinemann, G., Ley, R., and Rock, A.: Analysis of projected hydrological behavior of catchments based on signature indices, *Hydrol. Earth Syst. Sci.*, 16, 409–421, doi:10.5194/hess-16-409-2012, 2012.
- Ciach, G. J.: Local random errors in tipping-bucket rain gauge measurements, *J. Atmos. Ocean. Tech.*, 20, 752–759, 2003.
- Clark, M., McMillan, H., Collins, D., Kavetski, D., and Woods, R.: Hydrological field data from a modeller's perspective: Part 2: process-based evaluation of model hypotheses, *Hydrol. Process.*, 25, 523–543, 2011.
- Clark, M. P., Rupp, D. E., Woods, R. A., Tromp-van Meerveld, H. J., Peters, N. E., and Freer, J. E.: Consistency between hydrological models and field observations: linking processes at the hillslope scale to hydrological responses at the watershed scale, *Hydrol. Process.*, 23, 311–319, 2009.
- Clausen, B. and Biggs, B. J. F.: Flow variables for ecological studies in temperate streams: groupings based on covariance, *J. Hydrol.*, 237, 184–197, 2000.
- Coxon, G., Freer, J., Wagener, T., Odoni, A., and Clark, M.: Diagnostic evaluation of multiple hypotheses of hydrological behaviour in a limits-of-acceptability framework for 24 UK catchments, *Hydrol. Process.*, 28, 6135–6150, doi:10.1002/hyp.10096, 2013.
- Coxon, G., Freer, J., Westerberg, I. K., Wagener, T., Woods, R., and Smith, P. J.: A novel framework for discharge uncertainty quantification applied to 500 UK gauging stations, *Water Resour. Res.*, 51, 5531–5546, doi:10.1002/2014WR016532, 2015.
- Eischeid, J. K., Baker, C. B., Karl, T. R., and Diaz, H. F.: The quality-control of long-term climatological data using objective data-analysis, *J. Appl. Meteorol.*, 34, 2787–2795, 1995.
- Euser, T., Winsemius, H. C., Hrachowitz, M., Fenicia, F., Uhlenbrook, S., and Savenije, H. H. G.: A framework to assess the realism of model structures using hydrological signatures, *Hydrol. Earth Syst. Sci.*, 17, 1893–1912, doi:10.5194/hess-17-1893-2013, 2013.
- Graham, C. B., van Verseveld, W., Barnard, H. R., and McDonnell, J. J.: Estimating the deep seepage component of the hillslope and catchment water balance within a measurement uncertainty framework, *Hydrol. Process.*, 24, 3631–3647, 2010a.
- Graham, C. B., Woods, R. A., and McDonnell, J. J.: Hillslope threshold response to rainfall: (1) A field based forensic approach, *J. Hydrol.*, 393, 65–76, 2010b.
- Gupta, H. V. and Nearing, G. S.: Debates – The future of hydrological sciences: A (common) path forward? Using models and data to learn: A systems theoretic perspective on the future of hydrological science, *Water Resour. Res.*, 50, 5351–5359, doi:10.1002/2013WR015096, 2014.
- Gupta, H. V., Wagener, T., and Liu, Y. Q.: Reconciling theory with observations: elements of a diagnostic approach to model evaluation, *Hydrol. Process.*, 22, 3802–3813, 2008.
- Gustard, A., Bullock, A., and Dixon, J. M.: *Low Flow Estimation in the United Kingdom*, Institute of Hydrology, Wallingford, UK, 108, 88 pp., 1992.
- Hall, F. R.: Base flow recessions – a review, *Water Resour. Res.*, 4, 973–983, 1968.
- Hamilton, A. and Moore, R. D.: Quantifying Uncertainty in Streamflow Records, *Can. Water Resour. J.*, 37, 3–21, 2012.
- Harman, C. J., Sivapalan, M., and Kumar, P.: Power law catchment-scale recessions arising from heterogeneous linear small-scale dynamics, *Water Resour. Res.*, 45, W09404, doi:10.1029/2008WR007392, 2009.
- Harman, C. J., Troch, P. A., and Sivapalan, M.: Functional model of water balance variability at the catchment scale: 2. Elasticity of fast and slow runoff components to precipitation change in the continental United States, *Water Resour. Res.*, 47, W02523, doi:10.1029/2010WR009656, 2011.

- Hrachowitz, M., Savenije, H. H. G., Blöschl, G., McDonnell, J. J., Sivapalan, M., Pomeroy, J. W., Arheimer, B., Blume, T., Clark, M. P., Ehret, U., Fenicia, F., Freer, J. E., Gelfan, A., Gupta, H. V., Hughes, D. A., Hut, R. W., Montanari, A., Pande, S., Tetzlaff, D., Troch, P. A., Uhlenbrook, S., Wagener, T., Winsemius, H. C., Woods, R. A., Zehe, E., and Cudennec, C.: A decade of Predictions in Ungauged Basins (PUB) a review, *Hydrolog. Sci. J.*, 58, 1198–1255, doi:10.1080/02626667.2013.803183, 2013.
- Hrachowitz, M., Fovet, O., Ruiz, L., Euser, T., Gharari, S., Nijzink, R., Freer, J., Savenije, H. H. G., and Gascuel-Oudou, C.: Process consistency in models: the importance of system signatures, expert knowledge, and process complexity, *Water Resour. Res.*, 50, 7445–7469, 2014.
- Jowett, I. G. and Duncan, M. J.: Flow variability in New-Zealand rivers and its relationship to in-stream habitat and biota, *New Zeal. J. Mar. Fresh.*, 24, 305–317, 1990.
- Juston, J., Jansson, P.-E., and Gustafsson, D.: Rating curve uncertainty and change detection in discharge time series: case study with 44-year historic data from the Nyangores River, Kenya, *Hydrol. Process.*, 28, 2509–2523, 2014.
- Juston, J. M., Kauffeldt, A., Quesada Montano, B., Seibert, J., Beven, K. J., and Westerberg, I. K.: Smiling in the rain: seven reasons to be positive about uncertainty in hydrological modelling, *Hydrol. Process.*, 27, 1117–1122, 2013.
- Kapangaziwiri, E., Hughes, D. A., and Wagener, T.: Incorporating uncertainty in hydrological predictions for gauged and ungauged basins in southern Africa, *Hydrolog. Sci. J.*, 57, 1000–1019, 2012.
- Kauffeldt, A., Halldin, S., Rodhe, A., Xu, C.-Y., and Westerberg, I. K.: Disinformative data in large-scale hydrological modelling, *Hydrol. Earth Syst. Sci.*, 17, 2845–2857, doi:10.5194/hess-17-2845-2013, 2013.
- Kavetski, D. and Fenicia, F.: Elements of a flexible approach for conceptual hydrological modeling: 2. Application and experimental insights, *Water Resour. Res.*, 47, W11511, doi:10.1029/2011WR010748, 2011.
- Kennard, M. J., Mackay, S. J., Pusey, B. J., Olden, J. D., and Marsh, N.: Quantifying uncertainty in estimation of hydrologic metrics for ecohydrological studies, *River Res. Appl.*, 26, 137–156, 2010.
- Kirchner, J. W.: Catchments as simple dynamical systems: catchment characterization, rainfall–runoff modeling, and doing hydrology backward, *Water Resour. Res.*, 45, W02429, doi:10.1029/2008WR006912, 2009.
- Krueger, T., Freer, J., Quinton, J. N., Macleod, C. J. A., Bilotta, G. S., Brazier, R. E., Butler, P., and Haygarth, P. M.: Ensemble evaluation of hydrological model hypotheses, *Water Resour. Res.*, 46, W07516, doi:10.1029/2009WR007845, 2010.
- Li, H. Y. and Sivapalan, M.: Effect of spatial heterogeneity of runoff generation mechanisms on the scaling behavior of event runoff responses in a natural river basin, *Water Resour. Res.*, 47, W00H08, doi:10.1029/2010WR009712, 2011.
- McDonnell, J. J. and Woods, R.: On the need for catchment classification, *J. Hydrol.*, 299, 2–3, 2004.
- McMillan, H. and Westerberg, I. K.: Rating curve estimation under epistemic uncertainty, *Hydrol. Process.*, 29, 1873–1882, 2015.
- McMillan, H., Freer, J., Pappenberger, F., Krueger, T., and Clark, M.: Impacts of uncertain flow data on rainfall–runoff model calibration and discharge predictions, *Hydrol. Process.*, 24, 1270–1284, 2010.
- McMillan, H., Clark, M., Bowden, W. B., Duncan, M. J., and Woods, R.: Hydrological field data from a modeller’s perspective. Part 1: Diagnostic tests for model structure, *Hydrol. Process.*, 25, 511–522, 2011.
- McMillan, H., Krueger, T., and Freer, J.: Benchmarking observational uncertainties for hydrology: rainfall, river discharge and water quality, *Hydrol. Process.*, 26, 4078–4111, 2012.
- McMillan, H., Gueguen, M., Grimon, E., Woods, R., Clark, M. P., and Rupp, D. E.: Spatial variability of hydrological processes and model structure diagnostics in a 50 km² catchment, *Hydrol. Process.*, 28, 4896–4913, doi:10.1002/hyp.9988, 2014.
- Montanari, A. and Toth, E.: Calibration of hydrological models in the spectral domain: an opportunity for scarcely gauged basins?, *Water Resour. Res.*, 43, W05434, doi:10.1029/2006WR005184, 2007.
- Moore, R. J., Jones, D. A., Cox, D. R., and Isham, V. S.: Design of the HYREX raingauge network, *Hydrol. Earth Syst. Sci.*, 4, 521–530, doi:10.5194/hess-4-521-2000, 2000.
- Olden, J. D. and Poff, N. L.: Redundancy and the choice of hydrologic indices for characterizing streamflow regimes, *River Res. Appl.*, 19, 101–121, 2003.
- Pappenberger, F. and Beven, K. J.: Ignorance is bliss: or seven reasons not to use uncertainty analysis, *Water Resour. Res.*, 42, W05302 doi:10.1029/2005WR004820, 2006.
- Pappenberger, F., Matgen, P., Beven, K. J., Henry, J. B., Pfister, L., and de Fraipont, P.: Influence of uncertain boundary conditions and model structure on flood inundation predictions, *Adv. Water Resour.*, 29, 1430–1449, 2006.
- Pechlivanidis, I. G., Jackson, B. M., McMillan, H. K., and Gupta, H. V.: Using an informational entropy-based metric as a diagnostic of flow duration to drive model parameter identification, *Global Nest J.*, 14, 325–334, 2012.
- Penna, D., Tromp-van Meerveld, H. J., Gobbi, A., Borga, M., and Dalla Fontana, G.: The influence of soil moisture on threshold runoff generation processes in an alpine headwater catchment, *Hydrol. Earth Syst. Sci.*, 15, 689–702, doi:10.5194/hess-15-689-2011, 2011.
- Pokhrel, P., Yilmaz, K. K., and Gupta, H. V.: Multiple-criteria calibration of a distributed watershed model using spatial regularization and response signatures, *J. Hydrol.*, 418, 49–60, 2012.
- Refsgaard, J. C. and Knudsen, J.: Operational validation and inter-comparison of different types of hydrological models, *Water Resour. Res.*, 32, 2189–2202, 1996.
- Rupp, D. E. and Selker, J. S.: Information, artifacts, and noise in $dQ/dt - Q$ recession analysis, *Adv. Water Resour.*, 29, 154–160, 2006.
- Sawicz, K., Wagener, T., Sivapalan, M., Troch, P. A., and Carrillo, G.: Catchment classification: empirical analysis of hydrologic similarity based on catchment function in the eastern USA, *Hydrol. Earth Syst. Sci.*, 15, 2895–2911, doi:10.5194/hess-15-2895-2011, 2011.
- Seibert, J. and McDonnell, J. J.: On the dialog between experimentalist and modeler in catchment hydrology: use of soft data for multicriteria model calibration, *Water Resour. Res.*, 38, 1241, doi:10.1029/2001WR000978, 2002.
- Shaw, S. B. and Riha, S. J.: Examining individual recession events instead of a data cloud: using a modified interpretation of

- $dQ/dt - Q$ streamflow recession in glaciated watersheds to better inform models of low flow, *J. Hydrol.*, 434, 46–54, 2012.
- Sieck, L. C., Burges, S. J., and Steiner, M.: Challenges in obtaining reliable measurements of point rainfall, *Water Resour. Res.*, 43, W01420 doi:10.1029/2005wr004519, 2007.
- Sivakumar, B., Singh, V., Berndtsson, R., and Khan, S.: Catchment classification framework in hydrology: challenges and directions, *J. Hydrol. Eng.*, 20, A4014002, doi:10.1061/(ASCE)HE.1943-5584.0000837, 2013.
- Smith, P., Beven, K. J., and Tawn, J. A.: Informal likelihood measures in model assessment: theoretic development and investigation, *Adv. Water Resour.*, 31, 1087–1100, 2008.
- Staudinger, M., Stahl, K., Seibert, J., Clark, M. P., and Tallaksen, L. M.: Comparison of hydrological model structures based on recession and low flow simulations, *Hydrol. Earth Syst. Sci.*, 15, 3447–3459, doi:10.5194/hess-15-3447-2011, 2011.
- Stoelzle, M., Stahl, K., and Weiler, M.: Are streamflow recession characteristics really characteristic?, *Hydrol. Earth Syst. Sci.*, 17, 817–828, doi:10.5194/hess-17-817-2013, 2013.
- Sugawara, M.: Automatic calibration of the tank model, *Hydrol. Sci. Bull.*, 24, 375–388, 1979.
- Tallaksen, L. M.: A review of baseflow recession analysis, *J. Hydrol.*, 165, 349–370, 1995.
- Tromp-van Meerveld, H. J. and McDonnell, J. J.: Threshold relations in subsurface stormflow: 1. A 147-storm analysis of the Panola hillslope, *Water Resour. Res.*, 42, W02410, doi:10.1029/2004WR003778, 2006a.
- Tromp-van Meerveld, H. J. and McDonnell, J. J.: Threshold relations in subsurface stormflow: 2. The fill and spill hypothesis, *Water Resour. Res.*, 42, W02411, doi:10.1029/2004WR003800, 2006b.
- Villarini, G. and Krajewski, W. F.: Empirically-based modeling of spatial sampling uncertainties associated with rainfall measurements by rain gauges, *Adv. Water Resour.*, 31, 1015–1023, 2008.
- Viney, N. R. and Bates, B. C.: It never rains on Sunday: the prevalence and implications of untagged multi-day rainfall accumulations in the Australian high quality data set, *Int. J. Climatol.*, 24, 1171–1192, 2004.
- Wagener, T., Sivapalan, M., Troch, P. A., and Woods, R.: Catchment classification and hydrologic similarity, *Geogr. Comp.*, 1, 901–931, 2007.
- Westerberg, I. K., Walther, A., Guerrero, J.-L., Coello, Z., Halldin, S., Xu, C. Y., Chen, D., and Lundin, L.-C.: Precipitation data in a mountainous catchment in Honduras: quality assessment and spatiotemporal characteristics, *Theor. Appl. Climatol.*, 101, 381–396, 2010.
- Westerberg, I. K., Guerrero, J.-L., Younger, P. M., Beven, K. J., Seibert, J., Halldin, S., Freer, J. E., and Xu, C.-Y.: Calibration of hydrological models using flow-duration curves, *Hydrol. Earth Syst. Sci.*, 15, 2205–2227, doi:10.5194/hess-15-2205-2011, 2011.
- Westerberg, I. K., Gong, L., Beven, K. J., Seibert, J., Semedo, A., Xu, C.-Y., and Halldin, S.: Regional water balance modelling using flow-duration curves with observational uncertainties, *Hydrol. Earth Syst. Sci.*, 18, 2993–3013, doi:10.5194/hess-18-2993-2014, 2014.
- Winsemius, H. C., Schaefli, B., Montanari, A., and Savenije, H. H. G.: On the calibration of hydrological models in ungauged basins: a framework for integrating hard and soft hydrological information, *Water Resour. Res.*, 45, W12422, doi:10.1029/2009wr007706, 2009.
- WMO: Guide to Hydrological Practices, vol I.: Hydrology – from Measurement to Hydrological Information, World Meteorological Organization, Geneva, 168, 2008.
- Wood, S. J., Jones, D. A., and Moore, R. J.: Accuracy of rainfall measurement for scales of hydrological interest, *Hydrol. Earth Syst. Sci.*, 4, 531–543, doi:10.5194/hess-4-531-2000, 2000.
- Woods, R. A., Grayson, R. B., Western, A. W., Duncan, M. J., Wilson, D. J., Young, R. I., Ibbitt, R. P., Henderson, R. D., and McMahon, T. A.: Experimental design and initial results from the Mahurangi River variability experiment: MARVEX, in: Observations and Modelling of Land Surface Hydrological Processes, edited by: Lakshmi, V., Albertson, J. D., and Schaake, J., Water Resources Monographs, American Geophysical Union, Washington, D.C., 201–213, 2001.
- Yadav, M., Wagener, T., and Gupta, H.: Regionalization of constraints on expected watershed response behavior for improved predictions in ungauged basins, *Adv. Water Resour.*, 30, 1756–1774, 2007.
- Zhang, Y., Vaze, J., Chiew, F. H. S., Teng, J., and Li, M.: Predicting hydrological signatures in ungauged catchments using spatial interpolation, index model, and rainfall–runoff modelling, *J. Hydrol.*, 517, 936–948, 2014.