



Doyle, R. E., Lee, C., McGill, D. M., & Mendl, M. (2015). Evaluating pharmacological models of high and low anxiety in sheep. *PeerJ*, 2015(12), [e1510]. [10.7717/peerj.1510](https://doi.org/10.7717/peerj.1510)

Publisher's PDF, also known as Final Published Version

Link to published version (if available):  
[10.7717/peerj.1510](https://doi.org/10.7717/peerj.1510)

[Link to publication record in Explore Bristol Research](#)  
PDF-document

## University of Bristol - Explore Bristol Research

### General rights

This document is made available in accordance with publisher policies. Please cite only the published version using the reference above. Full terms of use are available:  
<http://www.bristol.ac.uk/pure/about/ebr-terms.html>

### Take down policy

Explore Bristol Research is a digital archive and the intention is that deposited content should not be removed. However, if you believe that this version of the work breaches copyright law please contact [open-access@bristol.ac.uk](mailto:open-access@bristol.ac.uk) and include the following information in your message:

- Your contact details
- Bibliographic details for the item, including a URL
- An outline of the nature of the complaint

On receipt of your message the Open Access Team will immediately investigate your claim, make an initial judgement of the validity of the claim and, where appropriate, withdraw the item in question from public view.

# Evaluating pharmacological models of high and low anxiety in sheep

Rebecca E. Doyle<sup>1,2</sup>, Caroline Lee<sup>3</sup>, David M. McGill<sup>2</sup> and Michael Mendl<sup>4</sup>

<sup>1</sup> Animal Welfare Science Centre, Faculty of Veterinary and Animal Sciences, The University of Melbourne, Parkville, Australia

<sup>2</sup> Graham Centre for Agricultural Innovation (NSW Department of Primary Industries and Charles Sturt University), Wagga, Australia

<sup>3</sup> Agriculture, CSIRO, Armidale, NSW, Australia

<sup>4</sup> School of Veterinary Science, University of Bristol, Langford, United Kingdom

## ABSTRACT

New tests of animal affect and welfare require validation in subjects experiencing putatively different states. Pharmacological manipulations of affective state are advantageous because they can be administered in a standardised fashion, and the duration of their action can be established and tailored to suit the length of a particular test. To this end, the current study aimed to evaluate a pharmacological model of high and low anxiety in an important agricultural and laboratory species, the sheep. Thirty-five 8-month-old female sheep received either an intramuscular injection of the putatively anxiogenic drug 1-(m-chlorophenyl)piperazine (mCPP; 1 mg/kg;  $n = 12$ ), an intravenous injection of the putatively anxiolytic drug diazepam (0.1 mg/kg;  $n = 12$ ), or acted as a control (saline intramuscular injection  $n = 11$ ). Thirty minutes after the treatments, sheep were individually exposed to a variety of tests assessing their general movement, performance in a 'runway task' (moving down a raceway for a food reward), response to startle, and behaviour in isolation. A test to assess feeding motivation was performed two days later following administration of the drugs to the same animals in the same manner. The mCPP sheep had poorer performance in the two runway tasks (6.8 and 7.7× slower respectively than control group;  $p < 0.001$ ), a greater startle response (1.4 vs. 0.6;  $p = 0.02$ ), a higher level of movement during isolation (9.1 steps vs. 5.4;  $p < 0.001$ ), and a lower feeding motivation (1.8× slower;  $p < 0.001$ ) than the control group, all of which act as indicators of anxiety. These results show that mCPP is an effective pharmacological model of high anxiety in sheep. Comparatively, the sheep treated with diazepam did not display any differences compared to the control sheep. Thus, we suggest that mCPP is an effective treatment to validate future tests aimed at assessing anxiety in sheep, and that future studies should include other subtle indicators of positive affective states, as well as dosage studies, so conclusions on the efficacy of diazepam as a model of low anxiety can be drawn.

**Subjects** Agricultural Science, Animal Behavior, Veterinary Medicine, Zoology

**Keywords** Affective state, Behaviour, Diazepam, mCPP, Welfare

## INTRODUCTION

In order to evaluate the welfare of animals more effectively research has led to the development of new behavioural and cognitive tests aimed at providing insight into welfare states (e.g., *Harding, Paul & Mendl, 2004; Statham et al., 2013*). However,

Submitted 24 September 2015

Accepted 25 November 2015

Published 14 December 2015

Corresponding author

Rebecca E. Doyle,  
rebecca.doyle@unimelb.edu.au

Academic editor

María Ángeles Esteban

Additional Information and  
Declarations can be found on  
page 14

DOI 10.7717/peerj.1510

© Copyright  
2015 Doyle et al.

Distributed under  
Creative Commons CC-BY 4.0

**OPEN ACCESS**

interpretation of these tests can be difficult, especially when it is not clear what state (e.g., positive or negative) the treatment under investigation has induced. For example, different treatments inducing apparently similar states (e.g., negative states) can lead to different responses in certain tests (Doyle *et al.*, 2011; Verbeek, Ferguson & Lee, 2014). This calls into question the validity of the tests, but also whether the experimental treatments really did induce the states that they were designed or assumed to induce. This latter issue is a key challenge in the validation of new tests of welfare state, and it would be helpful to have a set of treatments that are known to reliably induce particular states in a target species, so that these can be used to evaluate the validity of new tests. One potentially promising type of treatment is pharmacological manipulation (Forkman *et al.*, 2007; Mendl *et al.*, 2009), which presents the possibility of triggering clear affective states. Drugs can be administered in a standardised fashion and with appropriate controls (e.g., saline injections), and they have the advantage of remaining active for the duration of a test (assuming appropriate half-life). This is not necessarily the case when using an environmental manipulation that, for example, can be applied prior to but not during a test.

Examples of drugs being used to validate tests for affective state in animal welfare research are becoming more prevalent (Destrez *et al.*, 2012; Donald *et al.*, 2011; Doyle *et al.*, 2011; Rygula, Papciak & Popik, 2014; Verbeek *et al.*, 2014). In some cases, the drugs are chosen because of their effects in human subjects. For example, studies have shown that the serotonin agonist 1-(m-chlorophenyl)piperazine (mCPP) has an anxiogenic effect in both clinically anxious and healthy humans (Benjamin, Greenberg & Murphy, 1996; Charney *et al.*, 1987; Kahn *et al.*, 1990). Similarly, rats exposed to mCPP consistently perform behaviours indicative of an anxiety-like state including increasing escape attempts when in the elevated plus maze (Jones, Duxon & King, 2002), a reduction of exploratory behaviour in a light-dark box (Bilkei-Gorzó, Gyertyán & Lévy, 1998), and increased startle responses (Bijlsma *et al.*, 2010).

Diazepam (DZP), a GABA agonist, is associated with a reduction in fearfulness and anxiety in humans (Roy-Byrne, 2004). In rats, the administration of diazepam decreased anxiety-like behaviours in the elevated plus maze and reduced fear associated with a novel environment (Cole & Rodgers, 1995). Anxiolytic effects of diazepam have also been reported in pigs (Andersen *et al.*, 2000; Dantzer, 1976; Dantzer, 1977), dogs (Ibáñez & Anzola, 2009), and cattle, where it was demonstrated to reduce behaviours indicative of anxiety, fear and frustration (Sandem *et al.*, 2006).

Sheep are used broadly in medical research, including for highly invasive procedures and pharmacological trials (Holland *et al.*, 2013; Yates *et al.*, 2010), are farmed in extensive conditions and in large numbers globally (Dwyer, 2009), and are a useful model species for other production animals as they are easy to maintain and have well-developed cognitive abilities (Greiveldinger, Veissier & Boissy, 2011). Pharmacological models of high and low anxiety states in this species would thus be of use in a range of research areas. Recent research has demonstrated that both mCPP and DZP may have similar effects in sheep to those observed in humans and rodents, but the results have been mixed (Destrez *et al.*, 2012; Drake, 2006; Lee *et al.*, 2009; Table 1). In an effort to evaluate these drugs

**Table 1** Behavioural results from mCPP and Diazepam studies on sheep.

Drug	Reference	Dose (mg/kg)	Administration method	Drug-test interval	Animal numbers	Test	Finding
mCPP	<i>Lee et al. (2009)</i>	2	IM	30 min	32	Isolation box test (agitation scores only)	Increased agitation
						Spatial maze task—learning	No effect
	<i>Drake (2006)</i>	0.5	IM	20 min	5	Spatial maze task—memory	No effect
						Arena test	No effect
		1	5	Isolation box test (agitation scores and vocalisations)	No effect		
				Arena test	Increased distance from human, zones crossed and vocalisations made		
2	5	Isolation box test (agitation scores and vocalisations)	No effect				
		Arena test	No effect				
		Isolation box test (agitation scores and vocalisations)	No effect				
DZP	<i>Drake (2006)</i>	0.3	IM	20 min	5	Arena test	No effect
						Isolation box test (agitation scores and vocalisations)	No effect
						Arena test	No effect
	<i>Destrez et al. (2012)</i>	0.6	20 min	5	Isolation box test (agitation scores and vocalisations)	No effect	
					Arena test	No effect	
		0.9	20 min	5	General behaviour	Ataxia, reduced locomotion	
0.1	IV	10 min	10	Arena test	Less vigilant, but no effect on vocalisations, feeding or locomotion		
				Suddenness test	Faster return to eating, but no feeding differences before the test		
0.1	10 min	3 h	8	Judgement bias test	No effect		
				Judgement bias test	Reduced latency to approach one ambiguous location		

as effective inducers of anxious (mCPP) and calm (DZP) states in sheep, the current study aimed to measure behavioural and cognitive differences in sheep following the administration of both drugs. Assessing both drugs in the same experiment allowed us to study their ability to generate states of increased and decreased anxiety relative to

a control group, using the same tests and controlling for gender, age, experiential and environmental effects.

Previous studies in sheep have proposed that evaluating simple cognitive processes can give insight into their affective states, with negative states reducing performance in simple tasks and, as in humans and rodents, increasing reactivity to startling stimuli (Greiveldinger, Veissier & Boissy, 2007; Greiveldinger, Veissier & Boissy, 2009). Similarly, increased activity and vocalisations are often observed in situations that sheep are motivated to avoid, and so increased activity in isolation can be reflective of higher levels of anxiety and distress in sheep (Beausoleil *et al.*, 2012). Based on the literature, our *a priori* hypothesis was that sheep treated with mCPP would move more in isolation, have a reduced performance in a runway task (traversing a 150 m raceway to receive a feed reward), and have a greater startle response than control sheep, reflecting an increased level of anxiety. Conversely, it was hypothesised that sheep treated with diazepam would move less in isolation, have improved performance in the runway task and a smaller startle response than control sheep, reflecting a reduced level of anxiety (increased level of calmness).

## METHODOLOGY

The following protocol was approved by the Charles Sturt University Animal Care and Ethics Committee; protocol number 13/106.

### Animals

Thirty-nine 8-month-old merino ewes averaging 30.2 kg (range 22.5–38.5 kg) were housed in groups of four to five in outside pens where they had *ad libitum* access to water and were fed a diet of Lucerne pellets, Lucerne hay and oats at a rate of maintenance plus 10%.

### Training of the runway task

The task was for sheep to walk down a 30 m laneway individually, and without visual contact with other sheep, to receive a feed reward. Training involved sheep moving from their home pen to the facility (150 m away) where they then had the opportunity to complete the task and receive the feed reward. Sheep were placed in a start box and given a maximum of 90 s to reach the feed reward and 30 s to consume the reward, which consisted of Lucerne hay and oats. If a sheep failed to reach the feed reward in the allocated 90 s, it was moved to the end of the laneway and then had the opportunity to eat. Sheep performed the task three times per day. For five consecutive days, sheep were trained to perform the task in groups of two to three sheep to facilitate them learning the task. After this sheep were considered to be habituated and were trained individually. Each sheep received individual training for seven days over a three week period. A regression analysis was performed to assess whether or not sheep had learnt the task, with four sheep failing to learn the task. Details on the training criteria are provided in the statistical analysis section.

## Treatments

Thirty-five sheep proceeded to the main trial and were randomly allocated to one of three treatment groups: control ( $n = 11$ ), mCPP ( $n = 12$ ) or DZP ( $n = 12$ ). The mCPP group received an intramuscular injection of 1-(m-chlorophenyl)piperazine (Sigma-Aldrich, Castle Hill, Australia) at a rate of 1.0 mg/kg. The DZP group received an intravenous injection of diazepam (Provet, Sydney, Australia) at a rate of 0.1 mg/kg. Control sheep received a saline injection. Drug treatments were administered 30 min before testing in line with previous studies (Table 1).

Prior to the experiment, a dose of 2.0 mg/kg (Table 1) was tested on three sheep not involved in the experiment. The sheep displayed what the researchers perceived to be behaviours indicative of severe anxiety and discomfort including ataxic gait, head rolling and a stiff stance, none of which had previously been reported. This finding indicated that, from both an ethical and experimental perspective, the 2.0 mg/kg dose was too high and a dose of 1.0 mg/kg was used instead. When this dose was tested on another three sheep, also not involved in the experiment, the severe behaviours seen previously were not observed. At all dose rates, signs of mild distress had abated within 2 h of initial administration.

## General movement and vocalisations

The time taken to move the sheep from a standard start point near the home pen to the start box of the runway task and the number of vocalisations made were recorded. This measured the effect of the drug on speed of movement before the test situation. No differences in gait were observed in any of the sheep.

## Runway task

Thirty minutes after the drug treatment, sheep were tested in the runway task. On the first entry to the start box, sheep were allowed to move down the length of the runway to receive a feed reward ('runway task'), mimicking a normal training session.

## Runway startle task

On the second entry to the start box, a 5 s startle stimulus (rapid onset white noise at 98 dB (as measured 30 cm from the speaker; the closest distance that sheep could be)) was played as soon as the sheep left the box. The white noise was generated using the program Audacity® 1.3.12 Freeware. The sheep were given 60 s to reach the feed reward.

Video recordings were taken of both tests and analysed by an observer blind to the treatments. The time each sheep took to reach the feed reward was recorded, as was the number of vocalisations. The level of 'startle' a sheep displayed to the audio recording in the startle test was subjectively scored using a 4-point scale (Table 2) which was adapted from the method reported by Greiveldinger, Veissier & Boissy (2007).

## Isolation test

At the end of the startle task, the sheep were moved to a 1 × 1 m pen with opaque sides for 1 min. The number of forward steps, the number of 180° turns, and the number of vocalisations that sheep made were scored from video recordings.

**Table 2** Startle response scale.

Score	Description
0	No sign of startle
1	Stop movement
2	Stop movement and look towards the speaker
3	Display a visual contraction of the shoulders and/or hind quarters with flexion of the legs, stop movement, look towards the speaker

### Feed motivation test

Two days after the runway, startle and isolation tests, sheep were given the same drug or control treatment to test for feeding motivation. This was done independently of the other tests to assess the impact of the drugs on the appetite of the sheep. As the alpha half-life is 1 h for DZP (*Mandelli, Tognoni & Garattini, 1978*) and 5.8 h for mCPP (*Gijssman et al., 1998*), no traces of either drug would have been present in the sheep from the first trial.

Thirty minutes following treatment the sheep were tested for feeding motivation. Sheep were isolated in their home pen but retained close visual and auditory contact with conspecifics and were provided with approximately 150 g of oats in a shallow, transparent container. They were given a maximum of 1 min to eat the grain, and the time taken to commence feeding and the amount consumed were recorded. Exact weights of the feed provided to each sheep were recorded prior to the start of the test to ensure accurate consumption was recorded. Two sheep from the DZP group were removed from the test for unrelated illness before its commencement making DZP  $n = 10$  for this test.

### Statistical analyses

All statistical analyses were performed in R version 3.2 (*R Core Team, 2015*).

### Training criterion

To assess whether or not a sheep had 'learnt' the task, a regression analysis was performed for each sheep for each of the last three days of training. For each training day, the time required to reach the feed reward in each of the three training runs was used in a simple linear regression analysis. From the regression model, a predicted value for the final training run on that training day was calculated. Using this method, each sheep had a predicted 'final training run' time for each of the last three days of training. If any of the predicted run times for the last three training days was over 60 s, that sheep was considered to have not 'learnt' the task. The time of 60 s was selected as this reflected the average response times of the sheep in the first two days of individual training without handler intervention.

The between-individual sheep variation accounted for approximately 30% of the total variation in the last three days of training (days five to seven). The regression analysis and 60 s cut-off time were used to account for a number of different ways sheep could have learned the task. For example, some sheep were generally faster during the training phase and learned the task quicker. In other cases, sheep may have been fast initially but then their latency times actually slowed, suggesting that they hadn't necessarily learned the task, or were responding too inconsistently to be tested. Others were slow initially



(i.e., greater than 60 s) but improved with time. This criterion covered numerous different situations where sheep may have been learning; thus providing a more robust approach to assessing learning than using an average time may lead to.

A regression was chosen as it captures trends in learning within and across days. Compared to taking an average of these training times, which gives a single value to compare to the cut-off time, the regression analyses carried out captures if an animal had improved or got worse over those final days. This approach is less susceptible to: (1) being skewed by a single poor performance or (2) missing a string of poor performances which indicate that an individual had not learned the task

### ***Cox's proportional hazards model***

*Runway task.* Nineteen failed completions were recorded over both runway tasks, so these results were analysed with Cox's proportional hazards model using survival analysis (*Therneau, 2015; Therneau & Grambsch, 2000*). Any sheep that failed to approach the feed reward within 60 s was deemed as a censored result, and this was recorded as a 'survival' incidence. Cox proportional hazards model considers explanatory variables that affect the hazard of an event happening. From the fitted model, the hazard ratio can be predicted to investigate the effect of a factor (drug treatment in this case) on whether or not a sheep was likely to approach the feed reward. Hazard ratio values are positive values ranging from zero to infinity. A hazard ratio of  $>1$  indicates a higher likelihood of approaching the feed reward compared with the reference level for each categorical explanatory variable. Values between 0 and 1 indicate a lower likelihood of approaching the feed reward compared with the reference level. Note that the use of the term hazard in survival analysis does not necessarily imply a deleterious outcome and, in this study, the hazard refers to the sheep approaching the feed reward. Both the runway and startle runway tasks were analysed separately. Each of the drug treatments (control, DZP or mCPP) were fixed effects in the model and sheep was a random effect.

*Feeding behaviour.* A Cox's proportional hazards model using survival analysis was also performed to investigate the effect of drug on feeding behaviour in the feeding motivation test and drug treatment was the only fixed effect. Similar to the runway task analysis described above, any sheep that failed to eat the feed reward within 60 s was deemed as a censored result, and this was recorded as a 'survival' incidence.

### ***Other measures***

Linear regressions were used to investigate differences in speed of movement of the sheep from a standard start point near the home pen to the start box of the runway task. Drug was the predictor variable in the model.

We recorded the number of vocalisations made during general movement, runway and startle runway tasks and the isolation test and during feeding motivation. General movement and both runway tests were variable in their duration, so vocalisations were calculated as vocalisations/min and analysed using a linear regression, whereas vocalisations in the isolation tests were analysed using a generalised linear model (GLM) with a Poisson distribution. Drug was the only predictor variable for these analyses. This same GLM method and model was also used to analyse steps and turns in the isolation



**Table 3** Results summary for the general movement test, runway task, runway startle task and isolation box test for each treatment group; standard error of the means presented in parentheses, different superscripts indicate statistically significant differences between treatments.

Treatment	General movement		Runway task	Runway startle task	Isolation box test		
	Average time (s)	Average vocalisations/min	Average vocalisations/min	Average vocalisations/min	Front steps	180° turns	Average vocalisations
Control	57 (3.1)	5.9 (1.3)	2.3 (1.1) <sup>a</sup>	1.7 (1.0) <sup>a</sup>	5.4 (0.9) <sup>a</sup>	3.3 (0.5) <sup>a</sup>	7.1 (2.8)
DZP	63 (5.7)	5.8 (1.1)	0.7 (1.1) <sup>a</sup>	1.8 (1.0) <sup>a</sup>	7.1 (0.8) <sup>ab</sup>	4.3 (0.8) <sup>ab</sup>	5.9 (1.0)
mCPP	61 (2.1)	6.4 (1.2)	7.5 (1.1) <sup>b</sup>	6.7 (1.0) <sup>b</sup>	9.1 (1.2) <sup>b</sup>	5.9 (1.3) <sup>b</sup>	5.0 (1.1)
<i>P</i> -val	0.673	0.932	<0.001	<0.001	0.0028	0.0105	0.467

Notes. Differing superscripts indicate statistically significant differences between treatments within a measure.

test. There were no occurrences of sheep jumping in the isolation test. An ordinal logistic regression was performed on the scores for startle response, with drug as the fixed effect in the model.

## RESULTS

### General movement and vocalisation

There were no statistical differences in the time taken to move sheep in each treatment group from the common start point to the start box of the runway task ( $p = 0.673$ ), or for vocalisations ( $p = 0.466$ ) during this time (Table 3).

### Runway task

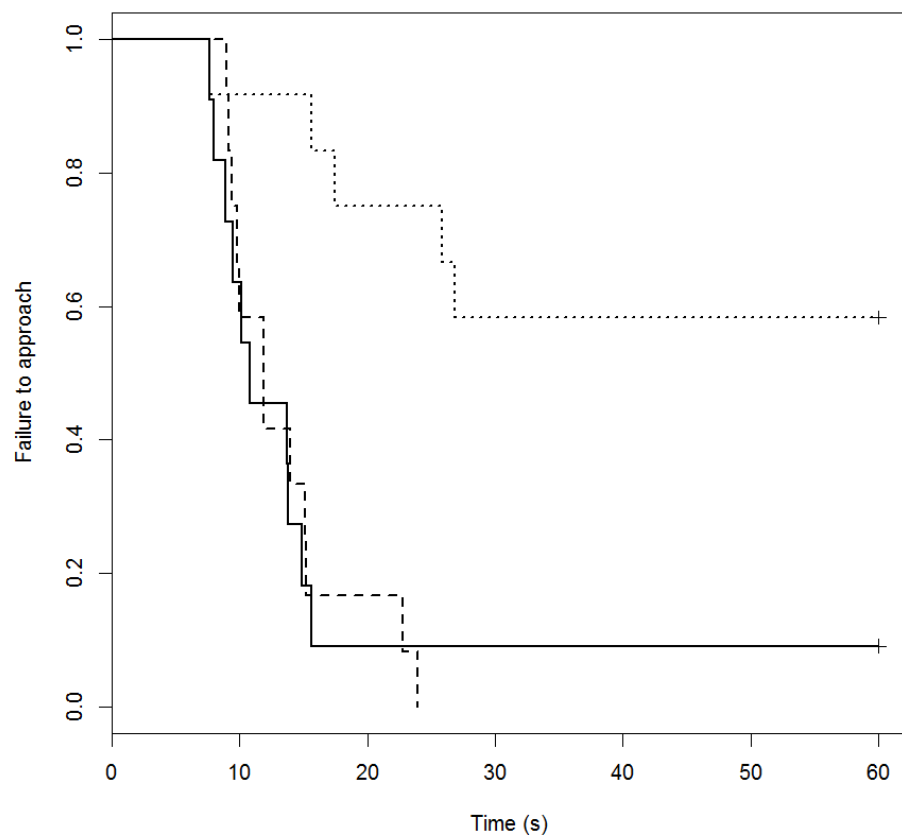
The drug treatment influenced sheep performance in the runway task, with the mCPP sheep being both significantly slower to complete the test and less likely to complete, compared to the two other treatment groups (Table 4). The mCPP treated sheep had a lower hazard ratio than the control group, indicating that they were less likely to complete the task. The DZP group had almost the same hazard ratio as the control group and were only slightly faster in their predicted approach time (Table 4; Time to approach). The Kaplan–Meier plot for this task (Fig. 1) shows the time of each approach and the proportion of sheep that failed to approach. The median approach time for the control group was 11 s and there was a 9% failure rate (1/11 animals did not complete the test). The median time was 12 s for the DZP group, and all sheep completed the test. The median of the mCPP group was 60 s as over half the animals did not complete the test (42% completed; 5 out of 12 sheep).

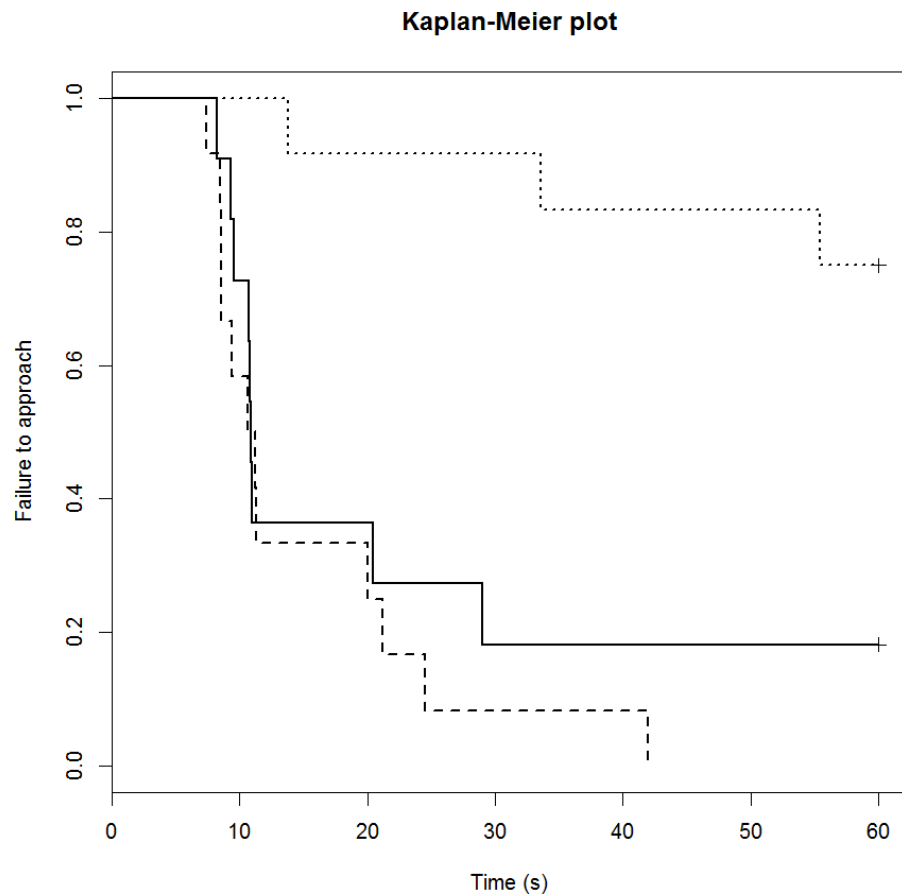
### Startle runway task

The startle score for the mCPP group was significantly greater than the control group (1.4 vs. 0.6 respectively;  $p = 0.022$ ), but there was no difference between the DZP (0.3) and control groups ( $p = 0.60$ ). The drug treatment also influenced sheep performance in the runway component of the startle test in a similar way (Table 4). Only three out of 12 mCPP treated sheep completed the task (failure rate of 75%; Fig. 2). The control group had failure rate of 18% (2/11 sheep) and a median completion time of 11 s. The DZP treated sheep had a median completion time of 11 s and there were no failures.

**Table 4** Hazard ratio of sheep approaching the end of the test as affected by drug treatment, for both the known and startle runway tests.

Runway test	Drug	Coefficient <sup>a</sup>	SE (coeff)	Hazard ratio <sup>b</sup>	Time to approach (s) <sup>c</sup>	<i>p</i> value
Runway task	Control			Reference level		
	DZP	0.03	0.44	1.03 (0.6–1.47)	0.97×	0.94
	mCPP	−1.92	0.57	0.15 (0.1–0.19)	6.79×	<0.01
Runway startle task	Control			Reference level		
	DZP	0.5	0.45	1.64 (0.98–2.31)	0.61×	0.27
	mCPP	−2.04	0.68	0.13 (0.1–0.16)	7.7×	<0.01

**Notes.**<sup>a</sup>Regression coefficient from the proportional hazards model.<sup>b</sup>95% CI in parentheses.<sup>c</sup>Calculated as 1/hazard ratio (i.e., average time taken to reach the end of the test compared with the reference level).**Kaplan-Meier plot****Figure 1** Kaplan–Meier curves for the runway task. Solid lines, control; long broken lines, DZP; dotted lines, mCPP. Every time a sheep approached the feed reward, the probability on the Y axis drops.



**Figure 2** Kaplan–Meier curves for the runway startle task. Solid lines, control; long broken lines, DZP; dotted lines, mCPP. Every time a sheep approached the feed reward, the probability on the Y axis drops.

Drug significantly affected vocalisations in each of the tests with the mCPP group vocalising significantly more than the other two treatments (Table 3; both  $p < 0.001$ ).

### Isolation test

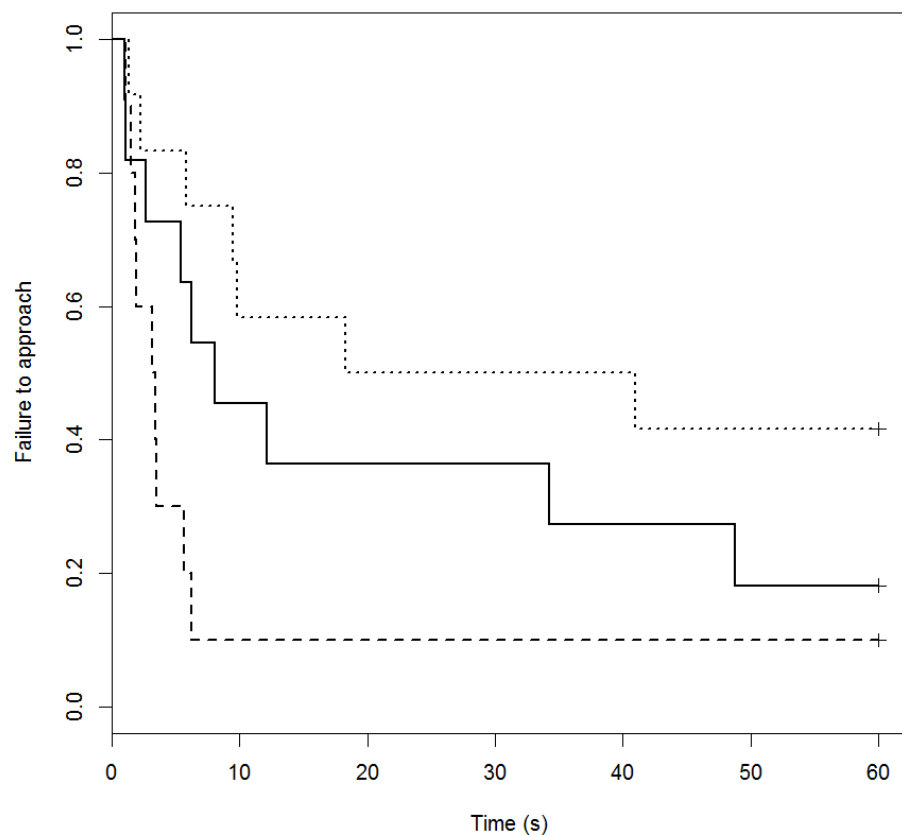
Sheep that received mCPP performed significantly more steps in the IBT test compared to either of the other treatments ( $p < 0.001$ ; Table 3). There was no significant statistical difference in vocalisations.

### Feed motivation test

Neither drug treatment group differed in their feeding motivation compared to the control group (Table 5). The control group had failure rate of 18% (2/11 sheep) and the median time to eat was 8 s (Fig. 3). The DZP group had failure rate of 10% (1/10 sheep) and the median time to eat was 3 s. The mCPP group had failure rate of 42% (5/11 sheep) and the median time to eat was 30 s. Post-hoc least significant means analysis of the survival curves indicated a significant difference between the two drug groups ( $p < 0.05$ ).

**Table 5** Hazard ratio of sheep eating in the feed motivation test as affected by drug treatment.

Drug	Coefficient <sup>a</sup>	SE (coeff)	Hazard ratio <sup>b</sup>	Time to eat (s) <sup>c</sup>	P value
Control	Reference				
DZP	0.74	0.49	2.11 (1.31–2.9)	0.47×	0.13
mCPP	−0.59	0.51	0.55 (0.35–0.76)	1.8×	0.24

**Notes.**<sup>a</sup>Regression coefficient from the proportional hazards model.<sup>b</sup>95% CI in parentheses.<sup>c</sup>Calculated as 1/hazard ratio (i.e., average time taken to reach the end of the test compared with the reference level).**Kaplan-Meier plot****Figure 3** Kaplan–Meier curves for the feeding motivation test. Solid lines, control; long broken lines, DZP; dotted lines, mCPP. Every time a sheep commenced eating, the probability on the Y axis drops.**DISCUSSION**

As hypothesised, sheep treated with mCPP displayed slower responses in the runway test, were more reactive to drawn.le test, vocalised more in both tests, and were more active in isolation, all indicating that they were more anxious than the control group. Thus, mCPP, at a dose rate of 1.0 mg/kg, is effective at inducing an anxious-like state in the

sheep. In contrast to the hypothesis, no effects of DZP were identified. Both sets of results are discussed in detail below.

The mCPP treatment increased the level of activity in the isolation test, supporting previous results (*Lee et al., 2009*). Movement in restricted isolation has been clearly linked with agitation in sheep (*Beausoleil et al., 2012; Bickell et al., 2011; Plush et al., 2011*), and vocalisation is a measure of fear and distress during isolation (*Cockram, 2004; Forkman et al., 2007*). The higher amount of movement in the isolation test and the greater number of vocalisations in the runway task indicates that the mCPP treated sheep were more anxious than the other treatments.

The runway task also created a situation in which the sheep's response to startle and subsequent recovery could be assessed, a method that has been used previously (*Greiveldinger, Veissier & Boissy, 2007*). In support of the hypothesis that mCPP treated sheep would be more anxious, they had a slower average completion time than the other two groups. Cognitive performance is optimal when an individual is experiencing mild stress or arousal (*Mendl, 1999*); however, anxiety can distort risk assessment, disturb cognition and affect memory and attention (*Lang, Davis & Öhman, 2000*). Exposure to mCPP negatively affected cognitive performance of rhesus macaques in a variety of cognitive tasks assessed memory, attention, reaction time and motor coordination (*Taffe et al., 2002*). Studies in humans have also shown that mCPP affects perceptual and attentional tasks, but not those that use working memory (*Sabbe et al., 2001; Silverstone et al., 1994*). Together, these results support the findings of the current study, which uses a simple runway task to assess the impact of the drugs on task performance. The findings of *Silverstone et al. (1994)* that working memory was not affected by mCPP may help to explain why there was no difference in the spatial maze task previously used by *Lee et al. (2009; Table 1)* as this task requiring working memory. Further assessment of the specific type of cognitive function mCPP alters would allow further conclusions to be drawn.

The startle reflex is a ubiquitous, cross-species response to abrupt and intense stimulation, and the amplitude of the response varies according to the internal state of the organism, including its level of fear or anxiety (*Grillon & Baas, 2003; Lang, Davis & Öhman, 2000*) and is generally potentiated in negative states. Previously published work has demonstrated an increased startle response in rats following mCPP administration (*Bijlsma et al., 2010; Risbrough & Geyer, 2005*), indicating that mCPP potentiates startle responses and may hence induce anxiety and other negative states. In line with these findings, startle responses were potentiated in mCPP sheep relative to the control group, corroborating our proposal that mCPP induces an anxiety-like negative state in sheep.

When combined, these runway, startle and behavioural results from our study support mCPP as a pharmacological model of high anxiety in sheep; however, it is possible that these differences were the result of non-anxiety related changes (e.g., reduced feeding motivation, motor impairment). There was a risk that feeding motivation may be influenced by the pharmacological models, and therefore influence performance in the simple cognitive tasks. Indeed, mCPP has been shown to suppress appetite and lead to reduced body weight in humans and rats (*Lee et al., 2004; Sargent et al., 1997; Vickers et al., 2003; Wright & Rodgers, 2014*). The independent feeding motivation test in our

study did not detect differences between the mCPP and control groups, but there was a difference between the two drug treatments, suggesting an effect on appetite. Whether this is an effect of DZP, mCPP or small additive effects from both treatment groups is not clear however, as DZP can also increase appetite (*Foltin, 2004; Gaskins, Massey & Ziccardi, 2008*), although this same phenomenon is not always evident (*Destrez et al., 2012; Sandem et al., 2006*). Furthermore, the conclusions that can be drawn from the literature on the hypophagic effects of mCPP are limited as the studies listed above also reported behavioural changes that could be linked to general anxiety, and thus whether appetite is independent of general anxiety effects cannot be determined. Broadly, this highlights an ongoing issue of the effects that food-related tasks can have on the interpretation of results. These issues have been raised in other recently published studies investigating animal affect (*Bateson et al., 2015; Verbeek et al., 2014b*). However, it is noted that gait was not affected by either drug, despite previously reported issues when using diazepam (*Drake, 2006*) and mCPP (*Lee et al., 2004*) in sheep. This is an important point, as changes in movement are often used in behavioural tests designed to assess the affective states of domestic animals. Finally, it is noted that the number of animals in each treatment group in our study borders on what is considered to be the minimum recommended number of 'events per variable' for survival analysis (*Peduzzi et al., 1995*). Thus, while a variety of the results indicate the validity of mCPP as a model of anxiety in sheep, we are cautious with the interpretation of these findings.

As no effects of DZP were evident, we cannot conclude that the treatment and dosage used generated a useful model of calmness/low anxiety in this study. However, it may be that the treatment was not effective during the test period. *Destrez et al. (2012)* identified reduced vigilance and a faster recovery from startle in sheep 10 min after DZP administration. Comparatively, we waited 30 min following administration before testing the sheep. Previous studies on the pharmacokinetics of DZP in sheep found that when administered intramuscularly, serum concentrations peaked 30 min after administration, and remained in circulation for over 5 h (*Moore et al., 1991*). When considered in combination with the literature, it suggests that the dose rate and administration-to-testing interval used in the current study were reasonable; however, this cannot be verified, and as a result, the efficacy of DZP cannot be concluded on in this study. The limited pharmacokinetic information about these drugs raises another issue for other pharmacological treatments in future studies as many of the drugs currently used in affect-related animal research have not had comprehensive pharmacokinetic studies performed for the broad range of species we may want to test them in. This will be an important consideration if the use of drug models in applied ethology increases.

Whilst positive affective states are of growing interest in the assessment of animal welfare, methods for measuring them are limited (*Yeates & Main, 2008*). Thus, a lack of appropriate measures to identify positive affective states in the tests used here may have prevented the detection of differences in the DZP group. Recent studies have shown that eye aperture, eye whites and ear postures may be useful ways to identify positive affective states in ruminants (*Boissy et al., 2011; Proctor & Carder, 2015; Sandem et al., 2006*), as well as there being evidence of qualitative behaviour assessment being effective

(*Rutherford et al., 2012*), so measuring these in future studies using DZP could help clarify whether or not it is an effective model of low anxiety.

To conclude, there is good evidence that mCPP is an effective model of anxiety in sheep, and it negatively impacts on runway performance, enhances startle and increases distress during isolation; however, our results did not support DZP as an effective model of low anxiety in sheep. Based on these results, we suggest that mCPP is an effective treatment to validate future tests aimed at assessing anxiety in sheep. We also recommend that DZP is trialled in future studies that include other subtle indicators of positive affective states, and pharmacokinetic assessment, to provide a more rigorous examination of the effectiveness of it as a model of low anxiety in sheep.

## ADDITIONAL INFORMATION AND DECLARATIONS

### Funding

The authors received no funding for this work.

### Competing Interests

Caroline Lee is an employee of CSIRO, Armidale, NSW, Australia

### Author Contributions

- Rebecca E. Doyle conceived and designed the experiments, performed the experiments, analyzed the data, contributed reagents/materials/analysis tools, wrote the paper, prepared figures and/or tables.
- Caroline Lee reviewed drafts of the paper.
- David M. McGill analyzed the data, prepared figures and/or tables, reviewed drafts of the paper.
- Michael Mendl conceived and designed the experiments, reviewed drafts of the paper.

### Animal Ethics

The following information was supplied relating to ethical approvals (i.e., approving body and any reference numbers):

Charles Sturt University Animal Care & Ethics Committee, protocol number 13/106.

### Data Availability

The following information was supplied regarding data availability:

Raw data can be found in the [Supplemental Information](#).

### Supplemental Information

Supplemental information for this article can be found online at <http://dx.doi.org/10.7717/peerj.1510#supplemental-information>.

## REFERENCES

- Andersen IL, Færevik G, Bøe KE, Janczak AM, Bakken M. 2000. Effects of diazepam on the behaviour of weaned pigs in three putative models of anxiety. *Applied Animal Behaviour Science* 68:121–130 DOI 10.1016/S0168-1591(00)00098-8.



- Bateson M, Emmerson M, Ergün G, Monaghan P, Nettle D. 2015.** Opposite effects of early-life competition and developmental telomere attrition on cognitive biases in juvenile European starlings. *PLoS ONE* **10**:e0132602  
[DOI 10.1371/journal.pone.0132602](https://doi.org/10.1371/journal.pone.0132602).
- Beausoleil NJ, Blache D, Stafford KJ, Mellor DJ, Noble AD. 2012.** Selection for temperament in sheep: domain-general and context-specific traits. *Applied Animal Behaviour Science* **139**:74–85 [DOI 10.1016/j.applanim.2012.02.020](https://doi.org/10.1016/j.applanim.2012.02.020).
- Benjamin J, Greenberg BD, Murphy DL. 1996.** Daily administration of m-chlorophenylpiperazine to healthy human volunteers rapidly attenuates many of its behavioral, hormonal, cardiovascular and temperature effects. *Psychopharmacology* **127**:140–149 [DOI 10.1007/BF02805987](https://doi.org/10.1007/BF02805987).
- Bickell S, Nowak R, Poindron P, Chadwick A, Ferguson D, Blache D. 2011.** Challenge by a novel object does not impair the capacity of ewes and lambs selected for a nervous temperament to display early preference for each other. *Animal Production Science* **51**:575–581 [DOI 10.1071/AN11009](https://doi.org/10.1071/AN11009).
- Bijlsma EY, De Jongh R, Olivier B, Groenink L. 2010.** Fear-potentiated startle, but not light-enhanced startle, is enhanced by anxiogenic drugs. *Pharmacology Biochemistry and Behavior* **96**:24–31 [DOI 10.1016/j.pbb.2010.04.002](https://doi.org/10.1016/j.pbb.2010.04.002).
- Bilkei-Gorzó A, Gyertyán I, Lévy G. 1998.** mCPP-induced anxiety in the light-dark box in rats—a new method for screening anxiolytic activity. *Psychopharmacology* **136**:291–298 [DOI 10.1007/s002130050568](https://doi.org/10.1007/s002130050568).
- Boissy A, Aubert A, Desiré L, Greiveldinger L, Delval E, Veissier I. 2011.** Cognitive sciences to relate ear postures to emotions in sheep. *Animal Welfare* **20**:47–56.
- Charney DS, Woods SW, Goodman WK, Heninger GR. 1987.** Serotonin function in anxiety. *Psychopharmacology* **92**:14–24 [DOI 10.1007/BF00215473](https://doi.org/10.1007/BF00215473).
- Cockram MS. 2004.** A review of behavioural and physiological responses of sheep to stressors to identify potential behavioural signs of distress. *Animal Welfare* **13**:283–291.
- Cole J, Rodgers R. 1995.** Ethological comparison of the effects of diazepam and acute/chronic imipramine on the behaviour of mice in the elevated plus-maze. *Pharmacology Biochemistry and Behavior* **52**:473–478  
[DOI 10.1016/0091-3057\(95\)00163-Q](https://doi.org/10.1016/0091-3057(95)00163-Q).
- Dantzer R. 1976.** Effect of diazepam on performance of pigs in a progressive ratio schedule. *Physiology and Behavior* **17**:161–163 [DOI 10.1016/0031-9384\(76\)90286-9](https://doi.org/10.1016/0031-9384(76)90286-9).
- Dantzer R. 1977.** Effects of diazepam on behaviour suppressed by extinction in pigs. *Pharmacology, Biochemistry and Behavior* **6**:157–161  
[DOI 10.1016/0091-3057\(77\)90066-1](https://doi.org/10.1016/0091-3057(77)90066-1).
- Destrez A, Deiss V, Belzung C, Lee C, Boissy A. 2012.** Does reduction of fearfulness tend to reduce pessimistic-like judgment in lambs? *Applied Animal Behaviour Science* **139**:233–241 [DOI 10.1016/j.applanim.2012.04.006](https://doi.org/10.1016/j.applanim.2012.04.006).
- Donald RD, Healy SD, Lawrence AB, Rutherford KMD. 2011.** Emotionality in growing pigs: is the open field a valid test? *Physiology & Behavior* **104**:906–913  
[DOI 10.1016/j.physbeh.2011.05.031](https://doi.org/10.1016/j.physbeh.2011.05.031).

- Doyle RE, Hinch GN, Fisher AD, Boissy A, Henshall JM, Lee C. 2011.** Administration of serotonin inhibitor p-Chlorophenylalanine induces pessimistic-like judgement bias in sheep. *Psychoneuroendocrinology* **36**:279–288 DOI [10.1016/j.psyneuen.2010.07.018](https://doi.org/10.1016/j.psyneuen.2010.07.018).
- Drake KA. 2006.** The neurophysiological regulation of temperament in sheep. PhD Thesis, University of New England.
- Dwyer C. 2009.** Welfare of sheep: providing for welfare in an extensive environment. *Small Ruminant Research* **86**:14–21 DOI [10.1016/j.smallrumres.2009.09.010](https://doi.org/10.1016/j.smallrumres.2009.09.010).
- Foltin RW. 2004.** Effects of amphetamine, dexfenfluramine, diazepam, and dietary manipulations on responding reinforced by stimuli paired with food in nonhuman primates. *Pharmacology Biochemistry and Behavior* **77**:471–479 DOI [10.1016/j.pbb.2003.12.013](https://doi.org/10.1016/j.pbb.2003.12.013).
- Forkman B, Boissy A, Meunier-Salaün M-C, Canali E, Jones R. 2007.** A critical review of fear tests used on cattle, pigs, sheep, poultry and horses. *Physiology & Behavior* **92**:340–374 DOI [10.1016/j.physbeh.2007.03.016](https://doi.org/10.1016/j.physbeh.2007.03.016).
- Gaskins LA, Massey JG, Ziccardi MH. 2008.** Effect of oral diazepam on feeding behavior and activity of Hawai'i 'amakihi (*Hemignathus virens*). *Applied Animal Behaviour Science* **112**:384–394 DOI [10.1016/j.applanim.2007.07.008](https://doi.org/10.1016/j.applanim.2007.07.008).
- Gijsman HJ, Van Gerven J, Tieleman MC, Schoemaker RC, Pieters M, Ferrari MD, Cohen AF, Van Kempen GM. 1998.** Pharmacokinetic and pharmacodynamic profile of oral and intravenous meta-chlorophenylpiperazine in healthy volunteers. *Journal of Clinical Psychopharmacology* **18**:289–295 DOI [10.1097/00004714-199808000-00007](https://doi.org/10.1097/00004714-199808000-00007).
- Greiveldinger L, Veissier I, Boissy A. 2007.** Emotional experience in sheep: predictability of a sudden event lowers subsequent emotional responses. *Physiology and Behavior* **92**:675–683 DOI [10.1016/j.physbeh.2007.05.012](https://doi.org/10.1016/j.physbeh.2007.05.012).
- Greiveldinger L, Veissier I, Boissy A. 2009.** Behavioural and physiological responses of lambs to controllable vs. uncontrollable aversive events. *Psychoneuroendocrinology* **34**:805–814 DOI [10.1016/j.psyneuen.2008.10.025](https://doi.org/10.1016/j.psyneuen.2008.10.025).
- Greiveldinger L, Veissier I, Boissy A. 2011.** The ability of lambs to form expectations and the emotional consequences of a discrepancy from their expectations. *Psychoneuroendocrinology* **36**:806–815 DOI [10.1016/j.psyneuen.2010.11.002](https://doi.org/10.1016/j.psyneuen.2010.11.002).
- Grillon C, Baas J. 2003.** A review of the modulation of the startle reflex by affective states and its application in psychiatry. *Clinical Neurophysiology* **114**:1557–1579 DOI [10.1016/S1388-2457\(03\)00202-5](https://doi.org/10.1016/S1388-2457(03)00202-5).
- Harding EJ, Paul ES, Mendl M. 2004.** Cognitive bias and affective state. *Nature* **427**:312 DOI [10.1038/427312a](https://doi.org/10.1038/427312a).
- Holland JC, Brennan O, Kennedy O, Mahony N, Rackard S, O'Brien F, Lee TC. 2013.** Examination of osteoarthritis and subchondral bone alterations within the stifle joint of an ovariectomised ovine model. *Journal of Anatomy* **222**:588–597 DOI [10.1111/joa.12051](https://doi.org/10.1111/joa.12051).
- Ibáñez M, Anzola B. 2009.** Use of fluoxetine, diazepam, and behavior modification as therapy for treatment of anxiety-related disorders in dogs. *Journal of Veterinary Behavior: Clinical Applications and Research* **4**:223–229 DOI [10.1016/j.jveb.2009.04.001](https://doi.org/10.1016/j.jveb.2009.04.001).

- Jones N, Duxon MS, King SM. 2002. 5-HT(2c) receptor mediation of unconditioned escape behaviour in the unstable elevated exposed plus maze. *Psychopharmacology* 164:214–220 DOI 10.1007/s00213-002-1197-9.
- Kahn RS, Wetzler S, Asnis G, Kling M, Suckow R, Van Praag H. 1990. Effects of m-chlorophenylpiperazine in normal subjects: a dose–response study. *Psychopharmacology* 100:339–344 DOI 10.1007/BF02244603.
- Lang PJ, Davis M, Öhman A. 2000. Fear and anxiety: animal models and human cognitive psychophysiology. *Journal of Affective Disorders* 61:137–159 DOI 10.1016/S0165-0327(00)00343-8.
- Lee C, Reed MT, Gresset F, Doyle RE, Fisher AD. 2009. *The effect of anxiety on memory and learning performance in sheep*. Cairns: International Society of Applied Ethology Congress.
- Lee M, Somerville E, Kennett G, Dourish C, Clifton P. 2004. Reduced hypophagic effects of d-fenfluramine and the 5-HT<sub>2C</sub> receptor agonist mCPP in 5-HT<sub>1B</sub> receptor knockout mice. *Psychopharmacology* 176:39–49 DOI 10.1007/s00213-004-1864-0.
- Mandelli M, Tognoni G, Garattini S. 1978. Clinical pharmacokinetics of diazepam. *Clinical Pharmacokinetics* 3:72–91 DOI 10.2165/00003088-197803010-00005.
- Mendl M. 1999. Performing under pressure: stress and cognitive function. *Applied Animal Behaviour Science* 65:221–244 DOI 10.1016/S0168-1591(99)00088-X.
- Mendl M, Burman OHP, Richard MA, Paul ES. 2009. Cognitive bias as an indicator of animal emotion and welfare: emerging evidence and underlying mechanisms. *Applied Animal Behaviour Science* 118:161–181 DOI 10.1016/j.applanim.2009.02.023.
- Moore DH, Smallridge RC, Von Bredow JD, Lukey BJ. 1991. The pharmacokinetics of atropine and diazepam in sheep: intramuscular co-administration. *Biopharmaceutics & Drug Disposition* 12:525–536 DOI 10.1002/bdd.2510120706.
- Peduzzi P, Concato J, Feinstein AR, Holford TR. 1995. Importance of events per independent variable in proportional hazards regression analysis II. Accuracy and precision of regression estimates. *Journal of Clinical Epidemiology* 48:1503–1510 DOI 10.1016/0895-4356(95)00048-8.
- Plush KJ, Hebart ML, Brien FD, Hynd PI. 2011. The genetics of temperament in Merino sheep and relationships with lamb survival. *Applied Animal Behaviour Science* 134:130–135 DOI 10.1016/j.applanim.2011.07.009.
- Proctor HS, Carder G. 2015. Measuring positive emotions in cows: do visible eye whites tell us anything? *Physiology & Behavior* 147:1–6 DOI 10.1016/j.physbeh.2015.04.011.
- R Core Team. 2015. *R: a language and environment for statistical computing*. Available at <http://www.R-project.org/>.
- Risbrough VB, Geyer MA. 2005. Anxiogenic treatments do not increase fear-potentiated startle in mice. *Biological Psychiatry* 57:33–43 DOI 10.1016/j.biopsych.2004.10.006.
- Roy-Byrne PP. 2004. The GABA-benzodiazepine receptor complex: structure, function, and role in anxiety. *The Journal of Clinical Psychiatry* 66:14–20.
- Rutherford KMD, Donald RD, Lawrence AB, Wemelsfelder F. 2012. Qualitative Behavioural Assessment of emotionality in pigs. *Applied Animal Behaviour Science* 139:218–224 DOI 10.1016/j.applanim.2012.04.004.

- Rygula R, Papciak J, Popik P. 2014.** The effects of acute pharmacological stimulation of the 5-HT, NA and DA systems on the cognitive judgement bias of rats in the ambiguous-cue interpretation paradigm. *European Neuropsychopharmacology* **24**:1103–1111 DOI [10.1016/j.euroneuro.2014.01.012](https://doi.org/10.1016/j.euroneuro.2014.01.012).
- Sabbe B, Hulstijn W, Maes M, Pier M, Scharpé S, Zitman F. 2001.** Psychomotor slowing, neuroendocrine responses, and behavioral changes after oral administration of meta-chlorophenylpiperazine in normal volunteers. *Psychiatry Research* **105**:151–163 DOI [10.1016/S0165-1781\(01\)00326-2](https://doi.org/10.1016/S0165-1781(01)00326-2).
- Sandem AI, Janczak AM, Salte R, Braastad BO. 2006.** The use of diazepam as a pharmacological validation of eye white as an indicator of emotional state in dairy cows. *Applied Animal Behaviour Science* **96**:177–183 DOI [10.1016/j.applanim.2005.06.008](https://doi.org/10.1016/j.applanim.2005.06.008).
- Sargent P, Sharpley A, Williams C, Goodall E, Cowen P. 1997.** 5-HT<sub>2C</sub> receptor activation decreases appetite and body weight in obese subjects. *Psychopharmacology* **133**:309–312 DOI [10.1007/s002130050407](https://doi.org/10.1007/s002130050407).
- Silverstone P, Rue J, Franklin M, Hallis K, Camplin G, Laver D, Cowen P. 1994.** The effects of administration of mCPP on psychological, cognitive, cardiovascular, hormonal and MHPG measurements in human volunteers. *International Clinical Psychopharmacology* **9**:137–138.
- Statham PTE, Campbell NW, Hannuna SL, Jones SM, Paul ES, Colborne GR, Browne WJ, Mendl MT. 2013.** Development of an automated measure of ‘defence cascade’ in pigs. In: *Behaviour 2013: joint meeting of the 33rd international ethological conference (IEC) & the association for the study of animal behaviour (ASAB)*. Newcastle-Gateshead, UK..
- Taffe MA, Davis SA, Yuan J, Schroeder R, Hatzidimitriou G, Parsons LH, Ricaurte GA, Gold LH. 2002.** Cognitive performance of MDMA-treated rhesus monkeys: sensitivity to serotonergic challenge. *Neuropsychopharmacology* **27**:993–1005 DOI [10.1016/S0893-133X\(02\)00380-9](https://doi.org/10.1016/S0893-133X(02)00380-9).
- Therneau T. 2015.** A package for survival analysis in S version 2.38 Available at <http://CRAN.R-project.org/package=survival>.
- Therneau TM, Grambsch PM. 2000.** *Modeling survival data: extending the Cox model*. New York: Springer.
- Verbeek E, Ferguson D, Lee C. 2014.** Are hungry sheep more pessimistic? The effects of food restriction on cognitive bias and the involvement of ghrelin in its regulation. *Physiology & Behavior* **123**:67–75 DOI [10.1016/j.physbeh.2013.09.017](https://doi.org/10.1016/j.physbeh.2013.09.017).
- Verbeek E, Ferguson D, Quinquet de Monjour P, Lee C. 2014.** Generating positive affective states in sheep: the influence of food rewards and opioid administration. *Applied Animal Behaviour Science* **154**:39–47 DOI [10.1016/j.applanim.2014.02.011](https://doi.org/10.1016/j.applanim.2014.02.011).
- Vickers SP, Easton N, Webster LJ, Wyatt A, Bickerdike MJ, Dourish CT, Kennett GA. 2003.** Oral administration of the 5-HT<sub>2C</sub> receptor agonist, mCPP, reduces body weight gain in rats over 28 days as a result of maintained hypophagia. *Psychopharmacology* **167**:274–280.

- Wright FL, Rodgers RJ. 2014.** On the behavioural specificity of hypophagia induced in male rats by mCPP, naltrexone, and their combination. *Psychopharmacology* **231**:787–800 DOI [10.1007/s00213-013-3295-2](https://doi.org/10.1007/s00213-013-3295-2).
- Yates DT, Strosser GL, Black PL, Halalshah RA, Lankford LM, Hernandez LL, Loest CA, Ross TT. 2010.** Technical note: effects of rumen passage on fluoxetine bioavailability in serum and effects of fluoxetine on serum prolactin concentration and demeanor in ewes. *Journal of Animal Science* **88**:3611–3616 DOI [10.2527/jas.2010-3076](https://doi.org/10.2527/jas.2010-3076).
- Yeates JW, Main DCJ. 2008.** Assessment of positive welfare: a review. *Veterinary Journal* **175**:293–300 DOI [10.1016/j.tvjl.2007.05.009](https://doi.org/10.1016/j.tvjl.2007.05.009).