



Hickey, J., Gottsmann, J. H., & Mothes, P. (2015). Estimating volcanic deformation source parameters with a finite element inversion: The 2001-2002 unrest at Cotopaxi volcano, Ecuador. *Journal of Geophysical Research: Solid Earth*, 120(3), 1473-1486. 10.1002/2014JB011731

Publisher's PDF, also known as Final Published Version

Link to published version (if available):  
[10.1002/2014JB011731](https://doi.org/10.1002/2014JB011731)

[Link to publication record in Explore Bristol Research](#)  
PDF-document

## University of Bristol - Explore Bristol Research

### General rights

This document is made available in accordance with publisher policies. Please cite only the published version using the reference above. Full terms of use are available:  
<http://www.bristol.ac.uk/pure/about/ebr-terms.html>

### Take down policy

Explore Bristol Research is a digital archive and the intention is that deposited content should not be removed. However, if you believe that this version of the work breaches copyright law please contact [open-access@bristol.ac.uk](mailto:open-access@bristol.ac.uk) and include the following information in your message:

- Your contact details
- Bibliographic details for the item, including a URL
- An outline of the nature of the complaint

On receipt of your message the Open Access Team will immediately investigate your claim, make an initial judgement of the validity of the claim and, where appropriate, withdraw the item in question from public view.



## RESEARCH ARTICLE

10.1002/2014JB011731

## Special Section:

Stress, strain and mass changes at volcanoes

## Key Points:

- Deformation and seismicity during 2001–2002 unrest at Cotopaxi volcano
- Deformation caused by shallow source beneath southwest flank
- Aseismic pressurization led to fluid migration which caused seismicity

## Correspondence to:

J. Hickey,  
james.hickey@bristol.ac.uk

## Citation:

Hickey, J., J. Gottsmann, and P. Mothes (2015), Estimating volcanic deformation source parameters with a finite element inversion: The 2001–2002 unrest at Cotopaxi volcano, Ecuador, *J. Geophys. Res. Solid Earth*, 120, doi:10.1002/2014JB011731.

Received 28 OCT 2014

Accepted 30 JAN 2015

Accepted article online 3 FEB 2015

This is an open access article under the terms of the Creative Commons Attribution License, which permits use, distribution and reproduction in any medium, provided the original work is properly cited.

## Estimating volcanic deformation source parameters with a finite element inversion: The 2001–2002 unrest at Cotopaxi volcano, Ecuador

James Hickey<sup>1</sup>, Jo Gottsmann<sup>1,2</sup>, and Patricia Mothes<sup>3</sup>

<sup>1</sup>School of Earth Sciences, University of Bristol, Bristol, UK, <sup>2</sup>Cabot Institute, University of Bristol, Bristol, UK, <sup>3</sup>Instituto Geofísico, Escuela Politécnica Nacional, Quito, Ecuador

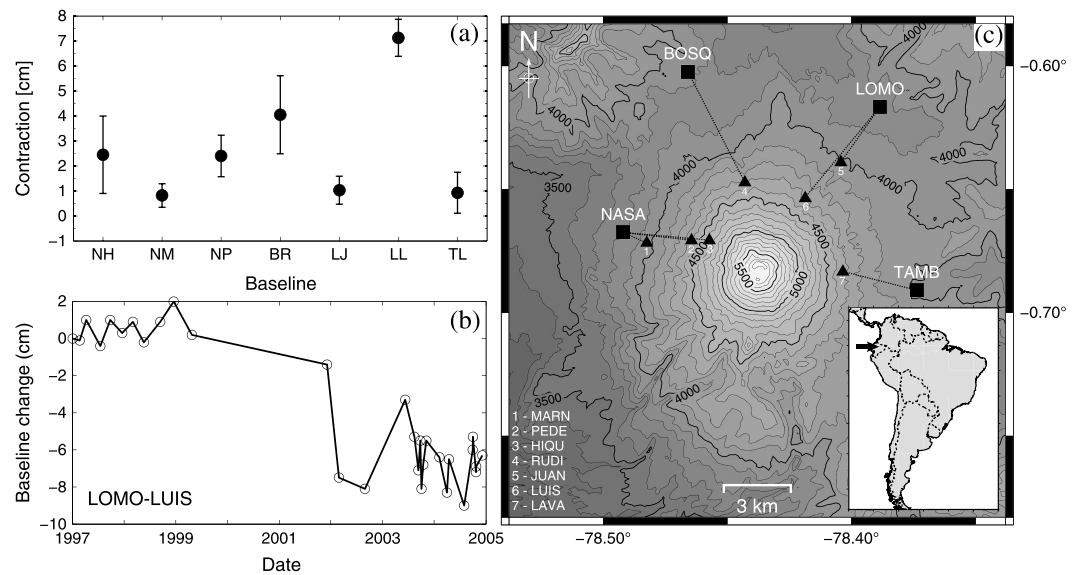
**Abstract** Deformation at Cotopaxi was observed between 2001 and 2002 along with recorded seismicity beneath the northeast (NE) flank, despite the fact that the last eruption occurred in 1942. We use electronic distance meter deformation data along with the patterns of recorded seismicity to constrain the cause of this unrest episode. To solve for the optimum deformation source parameters we employ inverse finite element (FE) models that account for material heterogeneities and surface topography. For a range of source shapes the models converge on a shallow reservoir beneath the southwest (SW) flank. The individual best fit model is a small oblate-shaped source, approximately 4–5 km beneath the summit, with a volume increase of roughly  $20 \times 10^6 \text{ m}^3$ . This SW source location contrasts with the NE seismicity locations. Subsequently, further FE models that additionally account for temperature-dependent viscoelasticity are used to reconcile the deformation and seismicity simultaneously. Comparisons of elastic and viscous timescales allude to aseismic pressurization of a small magma reservoir in the SW. Seismicity in the NE is then explained through a mechanism of fluid migration from the SW to the NE along fault systems. We extend our analyses to further show that if future unrest crises are accompanied by measurable seismicity around the deformation source, this could indicate a higher magma supply rate and increased likelihood of a forthcoming eruption.

### 1. Introduction

Magmatic intrusions often cause deformation at the Earth's surface as a result of the corresponding stress and strain being transferred through the crust [e.g., Gudmundsson, 2012]. If the rocks through which the magma propagates are relatively cold and brittle, and the associated strain rates are sufficiently high, then the intrusion can be accompanied by measurable seismicity. On the other hand, if the rocks are preheated, weakened, and ductile, or the strain rates are comparably low, then the magma can migrate aseismically. By combining the measured deformation with the recorded seismicity patterns, or lack thereof, we can build up an understanding of how magma is supplied, stored, and transported beneath active volcanoes.

Cotopaxi (5897 m) is an active stratovolcano located in the Eastern Cordillera of the Ecuadorian Andes (Figure 1). Despite being in a regional compressional setting, magma emplacement and the development of Cotopaxi has been enhanced by a horizontal least principal stress and vertical NNE-SSW striking faults in a transfer fault zone [Fiorini and Tibaldi, 2012]. Unlike other volcanoes within the Eastern Cordillera (e.g., Tungurahua, Sangay, and Cayambe), Cotopaxi displays a bimodal magmatic evolution with a rhyolitic and andesitic eruptive history and very limited evidence of intermingling [Hall and Mothes, 2008]. To the west is the more dacitic Western Cordillera, with the densely populated Inter-Andean Valley sitting between them [Hall et al., 2008]. The symmetrical conical edifice of Cotopaxi is topped by a  $1 \text{ km}^3$  glacier covering a  $21 \text{ km}^2$  area [Jordan, 1983]. Given the increasing population density on the surrounding flanks and the presence of a large glacier, the lahar risk is high [Barberi et al., 1995; Mothes et al., 1998; Aguilera et al., 2004]. As many as 100,000 people reside in the path of a lahar, the same size as one that occurred in 1877 [Pistolesi et al., 2013].

A stratigraphic study of eruptive products from 1140 to the present found no obvious patterns in magma composition, eruptive magnitude, or periods of quiescence; renewed magmatic activity could thus take the form of a single explosive event or mark the beginning of a swarm of eruptions [Pistolesi et al., 2011]. Such clusters of events are thought to be initiated by an increase in magma supply rate from depth, perhaps modulated by a deeper reservoir that recharges a shallower system [Pistolesi et al., 2011]. Petrological and geochemical results also indicate that Cotopaxi's volcanic system undergoes frequent recharge via andesitic



**Figure 1.** The location and deformation of Cotopaxi volcano. (a) The contraction of the electronic distance meter (EDM) baselines. The baseline names relate to the base stations and prisms in Figure 1c. (b) Time series of the contraction of the LOMO-LUIS EDM baseline. There is a clear decrease in the baseline length between 2001 and 2002. (c) Map of the EDM network operational between 2001 and 2002 around the summit of the volcano. The squares represent the EDM base stations, and the triangles are the reflecting prisms. The inset map and arrow show the location of Cotopaxi within South America.

magmas [Garrison *et al.*, 2011]. Whether this magma supply proceeds seismically or aseismically, and the implications that may have for the given supply rate and thus the risk of eruption, remains to be seen.

Since seismic monitoring of Cotopaxi began, long-period (LP), very-long-period (VLP), and volcano-tectonic (VT) events have been detected [Ruiz *et al.*, 1998; Kumagai *et al.*, 2010, 2013], as well as tremor associated with lahars [Kumagai *et al.*, 2009]. LP events recorded between 1989 and 1997, in a 3 km wide column stretching from +4 to −8 km depth, coincided with the occurrence of VT events but were not related to any volcanic unrest. The LPs were thought to be caused by the interaction of a hydrothermal system (fed by glacier melt) and hot material at depth (without fresh magma supply), while the VTs were a result of the increased stress caused by water and steam in cracks [Ruiz *et al.*, 1998].

An unrest period at Cotopaxi began in January 2001 with increased LPs, followed by swarms of VTs in November 2001, and VLP/LPs in June 2002 [Molina *et al.*, 2008]. Concurrent contraction of an electronic distance meter (EDM) line on the NE flank was also recorded during the 2001–2002 unrest and interpreted as flank inflation [Molina *et al.*, 2008]. Waveform inversion of a single VLP event and particle motion analyses alluded to a volumetric change of a subvertical crack 2–3 km beneath the NE flank, but the location is not particularly well constrained given the network size and geometry (two stations on the north and northeast flanks) [Molina *et al.*, 2008]. The combined results led to a conclusion of an intruded magmatic dyke as the cause of the recorded unrest [Molina *et al.*, 2008].

In this paper we use the complete EDM data set to test the hypothesis that an intrusion in the NE caused the observed deformation. We show that the spatial deformation field is far wider than just the NE flank and use inverse finite element (FE) models that account for material heterogeneities and topographical complexities to search for optimal deformation source parameters. The results are combined with the seismic observations and further forward FE models that incorporate temperature-dependent effects to provide first-order insights on the architecture of Cotopaxi's magmatic plumbing system.

## 2. Methods

### 2.1. Data

The EDM network surrounding Cotopaxi was first established by the Instituto Geofísico Escuela Politécnica Nacional (IGEPN) in 1987, with the latest additions added in 2004. However, weather and access conditions prevent measurements being made at the same temporal rate across all base stations. For the 2001–2002

unrest period, seven baselines provide usable data, with an unfortunate lack of coverage on the southern flanks (Figure 1). To extract the values for this period from the time series we took the difference between the means for the periods before (1997–2000) and after (2002–2005) the unrest. All seven baselines display a contraction, thus indicating a general inflation of the edifice that is not restricted to the NE flank. Magnitudes of the contraction are between 1 and 8 cm, and the associated errors ( $2\sigma$ : 0.8–2.5 cm) were calculated by a bootstrapping technique (Figure 1).

## 2.2. Numerical Model Setups

We use COMSOL Multiphysics (v4.4) to build and solve the finite element (FE) models in this study. The structural mechanics module is used in conjunction with an optimization procedure to solve the inverse problem. Subsequent forward FE models couple the structural mechanics to a heat transfer module to explore the effects of temperature-dependent mechanical properties.

### 2.2.1. Model Geometry

In order to account for sources offset from the center of the volcano and the nonaxisymmetric spatial deformation pattern, we use a full 3-D model geometry. Steep relief is known to alter modeled deformation patterns when compared to flat surfaces [e.g., *Williams and Wadge, 1998, 2000; Trasatti et al., 2003; Champenois et al., 2014*], so we include the real topography of Cotopaxi in our models via a digital elevation model (DEM) using 90 m SRTM data. This also allows a more accurate representation of the EDM lines in the FE model, as in reality they are recording deformation across three dimensions. The deformation source is represented as either a sphere, or oblate or prolate spheroid of varying eccentricity. Our final model geometry is 50 km  $\times$  50 km  $\times$  30 km in extent, and meshed with >165,000 tetrahedral elements, with a higher mesh density around the edifice and source regions (Figure 2).

The inclusion of faults in the models were beyond the scope of this paper given the inverse approach selected and the lack of accurate data on their locations. Future work that can map their location and extent and has additional computational power should aspire to include them, given they can impact a surface deformation pattern if they are proximal to the deformation source [*Folch and Gottsmann, 2006*]. We also neglected to include the summit glacier as a separate geometric entity with its own mechanical properties as synthetic tests proved that the impact of this on the deformation field was negligible.

### 2.2.2. Solid Mechanics

Mechanical heterogeneities in the subsurface significantly alter stress and strain distributions when compared to the simpler, unrealistic, homogeneous representations that are often used in analytical models [*Beauducel et al., 2004; Masterlark, 2007; Kinvig et al., 2009; Geyer and Gottsmann, 2010; Hautmann et al., 2010; Hickey et al., 2013*]. Therefore, to include the effects of a mechanically heterogeneous subsurface, we use the IGEPN 1-D seismic velocity model from the RENSIG network to delineate layers of different mechanical properties [*Font et al., 2013*].  $V_p$  and  $V_s$  velocities are converted to a Poisson's Ratio,  $\nu$ , density,  $\rho$ , and dynamic Young's Modulus,  $E$ , using the equations presented in *Brocher* [2005] (for all model parameters see Table 1):

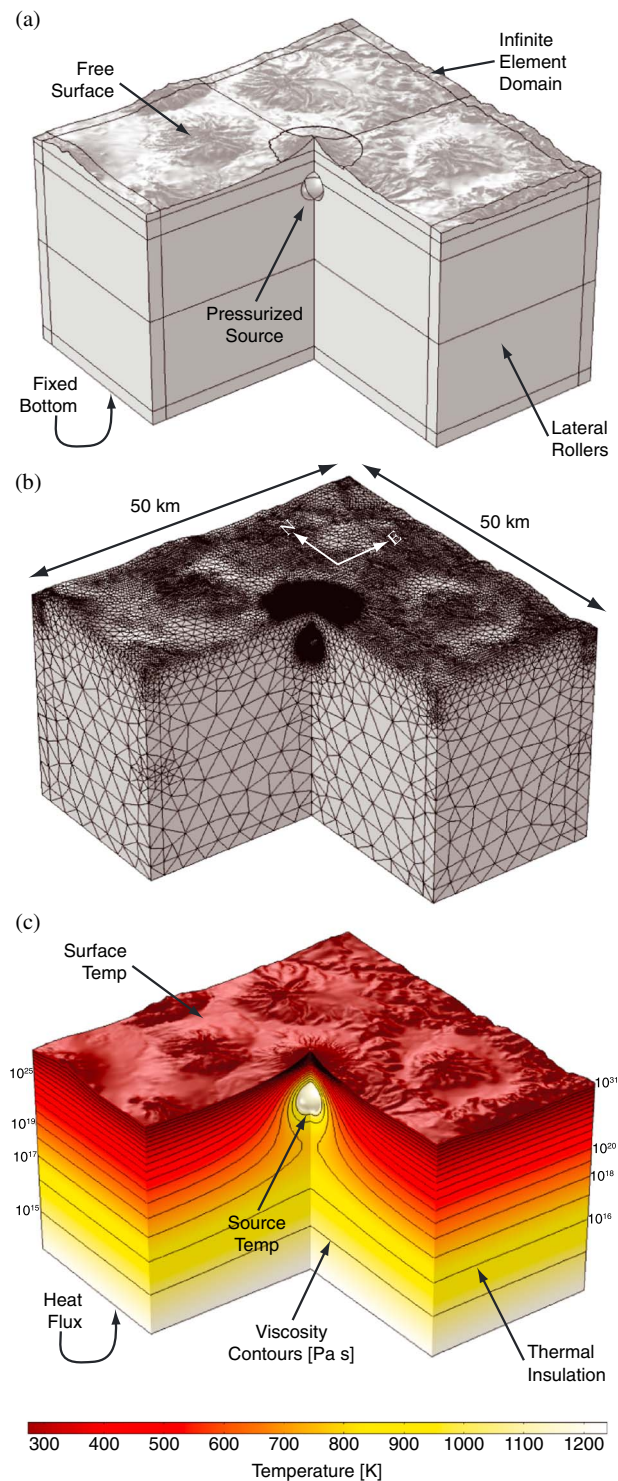
$$\nu = 0.5 \times \left[ \left( \frac{V_p}{V_s} \right)^2 - 2 \right] / \left[ \left( \frac{V_p}{V_s} \right)^2 - 1 \right] \quad (1)$$

$$\rho = 1.6612V_p - 0.4721V_p^2 + 0.067V_p^3 - 0.0043V_p^4 + 0.000106V_p^5 \quad (2)$$

$$E = \frac{V_p^2 \rho (1 + \nu)(1 - 2\nu)}{(1 - \nu)} \quad (3)$$

As the volcanic edifice is not accounted for in the velocity model, we use a dynamic Young's Modulus of 10 GPa (roughly equal to half of the layer immediately below) to account for further microheterogeneities, fracturing and alteration that can cause significant weakening. All the resultant values are consistent with those found in volcanic regions [*Gudmundsson, 2011*] (Table 2).

The model boundary and initial conditions are adapted from the benchmarked approach outlined in *Hickey and Gottsmann* [2014] to be applicable in a 3-D model: the top surface is free, the bottom surface is fixed, and the lateral surfaces have a roller condition (Figure 2). An infinite element domain borders the bottom and lateral edges of the model geometry to negate any boundary affects impacting the deformation results



**Figure 2.** The finite element model setups. (a) The basic model geometry and deformation boundary conditions. A pressurized spheroidal cavity is used to represent the deformation source, and an infinite element domain prevents any boundary affects from arising. More details can be found in *Hickey and Gottsmann* [2014]. (b) The meshed model configuration. Tetrahedral elements are used to mesh the model geometry, with smaller elements and a higher mesh density around the deformation source and volcanic edifice. (c) Thermomechanical model setup. Basal heat flux, surface temperature, and thermal insulation boundary conditions set up a background geothermal gradient, which is perturbed by a defined source temperature. The temperature distribution is used to calculate the viscosity distribution via equation (8) which is then used in a viscoelastic deformation model. An example temperature distribution and subsequent viscosity contours are displayed.



**Table 1.** List of Model Parameters<sup>a</sup>

Parameter	Definition	Value	Unit
$\nu$	Poisson's ratio	equation (1)	-
$\rho$	Density	equation (2)	g/cm <sup>2</sup>
$E$	Young's modulus	equation (3)	GPa
$G$	Shear modulus	Table 2	GPa
$K$	Bulk modulus	Table 2	GPa
$X$	Longitude	m.v.	deg
$Y$	Latitude	m.v.	deg
$Z$	Depth (rel. to sea level)	m.v.	km
$\Delta P$	Source pressure	m.v.	MPa
$\Delta V$	Source volume change	m.v.	m <sup>3</sup>
$R$	Source radius	m.v.	km
$a$	Semimajor axis (vert.)	m.v.	km
$b$	Semiminor axes (horiz.)	m.v.	km
$D_i$	EDM data	Figure 1	m
$E_i$	EDM error	Figure 1	m
$W_i$	EDM weight	equation (6)	-
$M_i$	Modeled EDM	m.v.	m
$J$	Objective function	equation (4)	m
$\eta$	Viscosity	equation (8)	Pa s
$A_d$	Dorn parameter	10 <sup>9</sup>	Pa s
$H$	Activation energy	120	KJ/mol
$R$	Universal gas constant	8.314	J/(mol K)
$k$	Thermal conductivity	3	W/(m K)
$C_p$	Heat capacity	1000	J/(kg K)
$dT/dZ$	Geothermal gradient	30	K/Km
$T_{\text{surf}}$	Surface temp.	273	K
$T_{\text{mag}}$	Source temp.	1173	K

<sup>a</sup>m.v. = Model variant.

of the interior. The model forcing is supplied by a boundary load applied uniformly to the surface of the source cavity walls and can be converted to a complementary volume change using the three-dimensional expansion of the source surfaces (also benchmarked against the solutions of *Delaney and McTigue* [1994]).

### 2.2.3. Optimization

To solve the inverse problem with a FE approach we use the Optimization module in COMSOL. This searches for the optimum location (longitude, latitude, and depth) and overpressure of the source to fit the EDM deformation data within its error and automatically rebuilds the mesh after each iteration. It works to minimize an objective function by varying a set of given design variables (source parameters) within their defined range. We specify the objective function,  $J$ , as follows:

$$J = \sqrt{\sum f_i} \quad (4)$$

where

$$f_i = [(M_i - D_i) \times W_i]^2 \quad (5)$$

$$W_i = \frac{a_i}{\sum a_j} \quad (6)$$

$$a_i = \left| \frac{D_i}{E_i} \right| \quad (7)$$

**Table 2.** Layered Mechanical Properties

$Z$ (km)	$\rho$ (kg/m <sup>3</sup> )	$\nu$	$E$ (GPa)	$G$ (GPa)	$K$ (GPa)
>4	2280	0.2408	10.00	4.03	6.43
2.5–4	2280	0.2408	21.32	8.59	13.71
0–2.5	2680	0.2402	67.42	27.18	43.25
–11.7–0	2740	0.2392	74.58	30.09	47.66
–26.7 to –11.7	2850	0.2498	87.01	34.81	57.96

**Table 3.** Initial Prescribed Parameter Constraints ( $X, Y, Z, \Delta P$ ), Tested Source Sizes ( $R, a, b$ ), and Resultant Objective Function ( $J$ )<sup>a</sup>

Parameter	Source Shape		
	Sphere	Prolate	Oblate
$X$ (deg)	−78.53 to −78.35	−78.50 to −78.37	−78.50 to −78.3
$Y$ (deg)	−0.78 to −0.59	−0.75 to −0.62	−0.75 to −0.62
$Z$ (km)	−7.0–2.5	−7.0–2.5	−7.0–2.5
$\Delta P$ (MPa)	1–1000	1–1000	1–500
$R$ (km)	0.5–2.0	-	-
$a$ (km)	-	0.75–2.00	0.01–1.00
$b$ (km)	-	0.30–1.00	0.75–2.00
$J$ (m)	0.0013–0.5845	0.0026–0.9670	0.0010–0.2455

<sup>a</sup>See section 2.2.3 for details.

and  $M, D, E$ , and  $W$ , are the model, data, error, and weight, respectively, for the index,  $i$ , relating to each of the seven EDM baselines.  $J$  is then the square root of the weighted residual sum of squares. For the design variables we include the longitude, latitude, depth, and overpressure of the source (Table 3). The algorithm used is a derivative-free numerical optimization called BOBYQA (Bound Optimization BY Quadratic Approximation), based on *Powell* [2009]. It works by “walking” toward the solution that minimizes  $J$  for the constraints (parameter bounds) placed on the design variables. Local minima are avoided by testing different starting conditions for the source parameters.

The results of an initial optimization are used to inform a sequence of subsequent inversions, which use increasingly tighter constraints on the design variables, so as to build up nested parameter constraint grids and ensure the most robust final solution. This procedure is repeated for each source shape and size. The modeled EDM baselines,  $M_i$ , are calculated by subtracting the three-dimensional straight line distance between the two points after the simulation from the distance before the simulation.

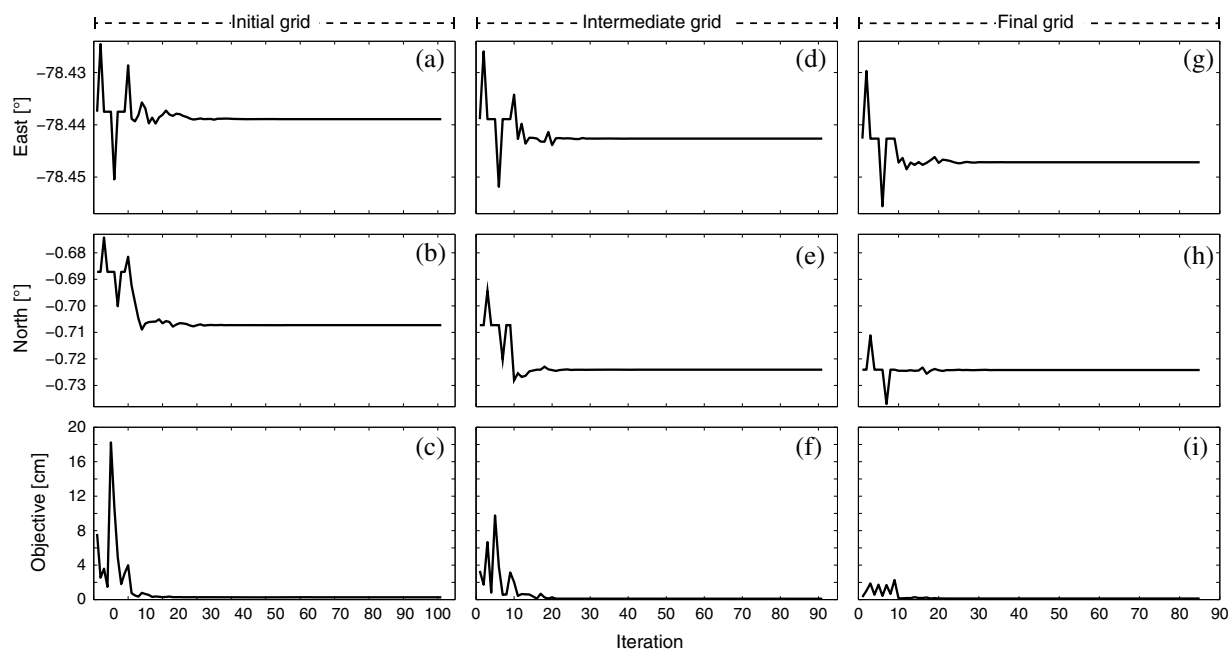
#### 2.2.4. Thermomechanics

The observation of LPs caused by the interaction of a hydrothermal system and hot material at depth [*Ruiz et al.*, 1998] indicates that a substantial amount of heat remains in the crust beneath Cotopaxi. Further heating is likely to be caused by any fresh input of new magma. Where rocks are significantly heated, they are unlikely to respond in an elastic manner; viscoelastic effects are thus more applicable [*Dragoni and Magnanensi*, 1989; *Ranalli*, 1995; *Jellinek and DePaolo*, 2003]. Temperature-dependent viscoelastic effects are known to impact the way stress and strain is partitioned in volcanic settings [e.g., *Del Negro et al.*, 2009; *Gregg et al.*, 2012; *Gottsmann and Odbert*, 2014], so we incorporate this in a series of forward FE models, guided by the best results obtained from the optimization procedure outlined above.

To include the influence of temperature-dependent viscoelasticity we adapt the approach outlined in *Hickey and Gottsmann* [2014] for application in a 3-D model domain. This couples a heat transfer module, to calculate a steady-state temperature distribution, with the solid mechanics, where the temperature value is used to define the viscosity of the viscoelastic component across the model domain. The viscosity,  $\eta$ , is calculated via

$$\eta = A_d \exp\left(\frac{H}{RT}\right) \quad (8)$$

where  $A_d$  is the Dorn Parameter (a material constant),  $H$  is the activation energy,  $R$  is the universal gas constant, and  $T$  is temperature. For the boundary conditions, the surface is set to 273 K, the walls of the source are set to 1173 K, the bottom is given an inward heat flux of 0.09 W/m<sup>2</sup>, and thermal insulation is used on the lateral surfaces which results in a general background geothermal gradient of 30 K/km (Figure 2). Elevated temperatures in the vicinity of the source result in reduced viscosities. This setup also requires that the elastic parameters for the solid mechanics are specified in terms of their shear modulus,  $G = E/[2(1 + \nu)]$ , and bulk modulus,  $K = E/[3(1 - 2\nu)]$  (Table 2). The value of the shear modulus is then split equally between the elastic and viscoelastic branches of the standard linear solid viscoelastic representation [*Del Negro et al.*, 2009; *Hickey and Gottsmann*, 2014].



**Figure 3.** Source parameter convergence. The optimization solver varies the source parameters to reduce the objective function. We use the results of an initial parameter grid (a, b, and c) to inform the parameter constraints of the next inversion (d, e, and f). This process of nested parameter constraint grids ensures the final solution (g, h, and i) is as robust as possible, with the smallest possible objective function (or misfit).

### 3. Results and Discussion

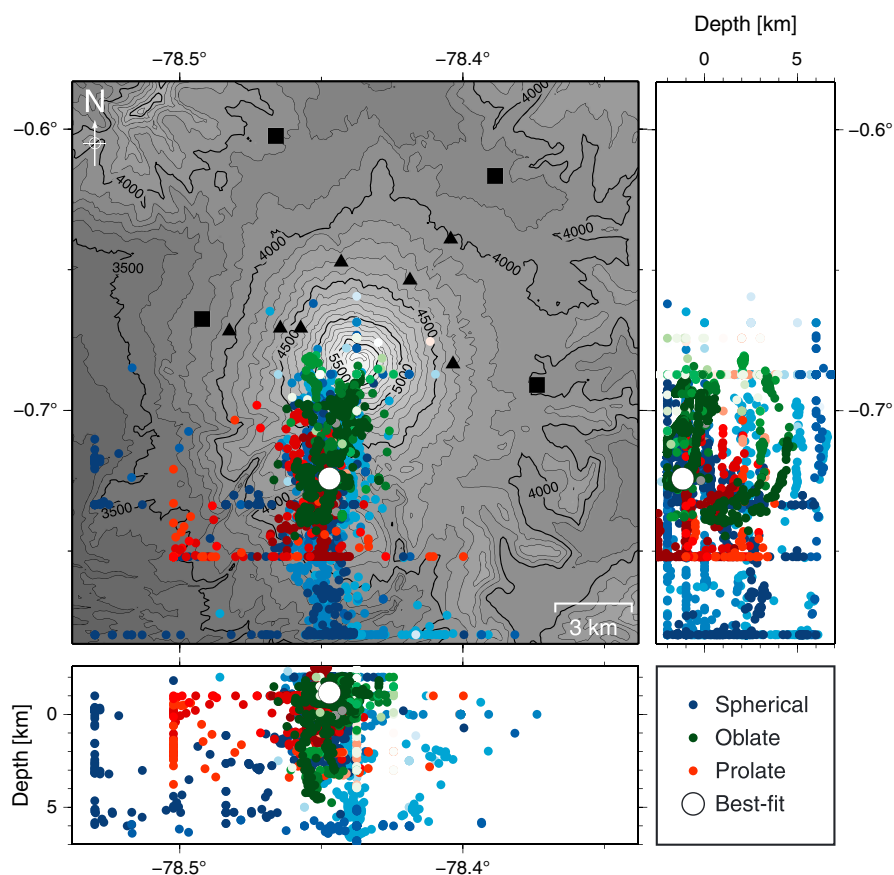
#### 3.1. Parameter Convergence and Source Location

The sequences of nested parameter constraint grids ensured that the final solution was as robust as possible: the results of the first search were used as the initial conditions for the next inversion, and so on. Evolution of the optimal source parameters can be traced through each iteration of the linked inversions (Figure 3). This approach is justified by the continual decrease in the objective function,  $J$ , which serves as an indicator of modeled misfit. The sequence was stopped when  $J$  showed no further decrease between the first and last iterations of an individual inversion (e.g., Figure 3i). Figure 3 also shows that the number of iterations required in each inversion to converge upon a final solution decreased as the sequence of linked inversions progressed, further demonstrating the robustness of the solution.

All three source shapes converge on a solution beneath the SW-SSW of the edifice at depths of 1–2 km above sea level, regardless of size or spheroidal eccentricity (Figure 4). Oblate sources generally provide the best fit to the data, with prolate sources the worst (Table 3). In the case of some of the poorer fits to the data, the solver underperformed and got “stuck” varying the source location in one dimension. This is what creates the linear features that are visible in Figure 4 for the spherical and prolate sources. Also interesting to note is a second grouped population of spherical sources, slightly to the south of the main congregation of solutions (further evident in Figure 5b). Although the misfits for this second group of source locations are slightly higher, the linear alignment may allude to the SSW-NNE trending faults playing a role in the deformation recorded.

The convergence of the deformation sources in the SW contrasts strongly with the source proposed by *Molina et al.* [2008] in the NE to explain the seismicity. This mismatch is striking. To further explore this discrepancy and to counter the fact that the optimization solver does not always fully exploit the parameter constraint bounds supplied (i.e., if the tested parameters of one iteration provide a poorer fit to that of the parameters tested previously, the solver will “walk” in a different direction), we performed a series of extra tests in which the location of the deformation source was restricted to the NE. The results were poor, with the resultant modeled EDM lines only fitting a maximum of two of the observed EDM recordings ( $J > 0.006$  m). Thus the most likely source to fit the observed deformation is SW-SSW of the edifice, as shown in Figure 4.





**Figure 4.** Distribution of modeled source locations. The source locations from every iteration of each original inversion are shown for all three source shapes. A darker color (blue, red, or green, for spherical-, prolate-, or oblate-shaped sources, respectively) indicates a better fit to the data. There is a clear preference for a deformation source location SW-SSW of the edifice at a shallow depth. The source location of the individual best fit model is shown by a white circle.

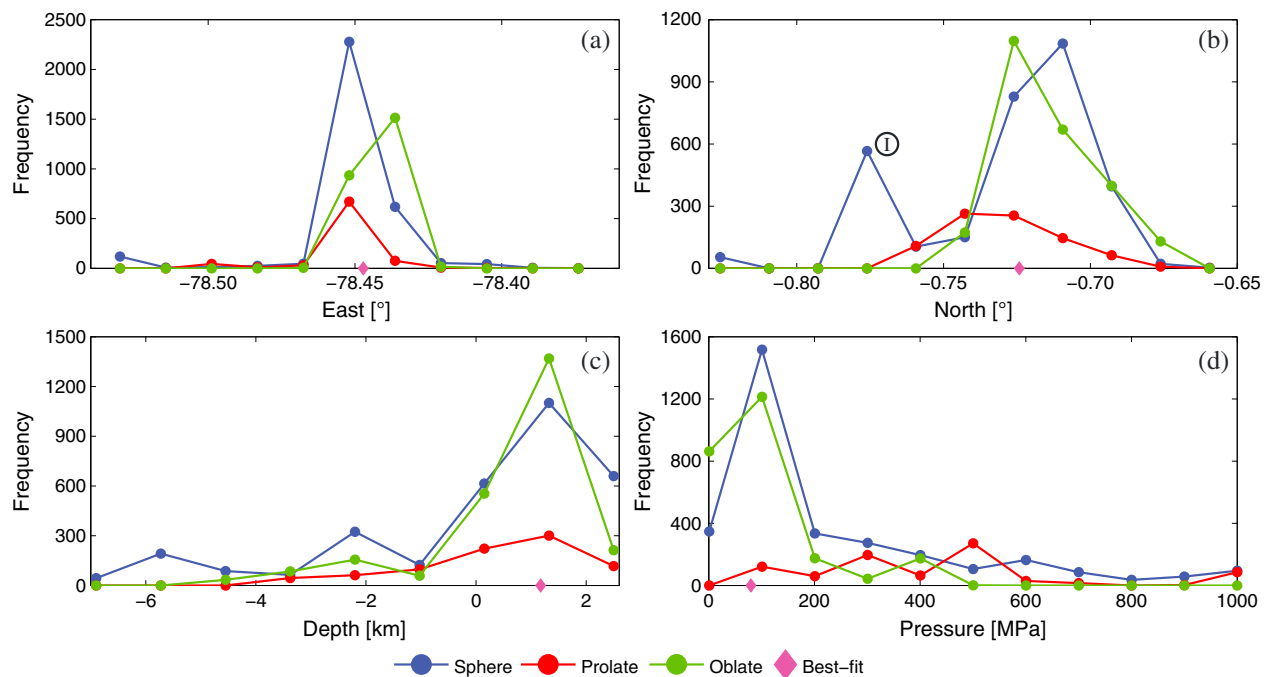
### 3.2. Best Fit Model

Of the parameters tested, the best fit model of this study fits the most EDM observations (six of the seven, Figure 6) with the smallest objective function ( $J \approx 0.001$  m). The source is oblate in shape with  $a = 0.25$  km and  $b = 1.50$  km. It is located SSW of the edifice ( $X = -78.447^{+0.014}_{-0.004}$ ,  $Y = -0.724^{+0.001}_{-0.001}$ ), at a depth of  $Z = 1.17^{+0.58}_{-0.35}$  km (Figure 4). The overpressure,  $\Delta P = 80^{+10}_{-5}$  MPa, translates to a volume change of  $\Delta V \approx 20 \times 10^6$  m<sup>3</sup>. Uncertainties on the source parameters were constrained by rerunning the inversion with the recorded EDM values replaced by their upper and lower error bounds. Figure 5 shows that the resultant best fit model parameters fit well within the most frequent source parameter distributions from all of the inversions conducted, while Figure 6 shows how the modeled EDM baselines converged to the final best fit solution as the inversion progressed through the different iterations.

#### 3.2.1. Source Overpressure and Failure Criteria

The best fit modeled  $\Delta P$  seems high (80 MPa) when compared to the usual estimates of rock tensile strength ( $T_0$ ) that are often employed as maximum estimates of magma reservoir pressurization [Gudmundsson, 2006]. These range from 0.5 to 9 MPa when measured in situ [Gudmundsson, 2012], or up to 31 MPa when calculated from laboratory tests where  $T_0 = 6.88K_C$  [Zhang, 2002], and  $K_C$  is the tensile fracture toughness with a value of  $3.5 \pm 1$  MPa m<sup>1/2</sup> at magmatic temperatures [Smith et al., 2009]. In situ fracture toughness is considerably higher, particularly for stratovolcanoes [Gudmundsson, 2009] but has yet to be directly related to in situ tensile strength estimates.

There are a number of reasons why  $\Delta P$  could be high. First, the inversion models employed an elastic host rock rheology to reduce the computational requirements, which is known to overestimate pressure requirements [Trasatti et al., 2003; Newman et al., 2006; Del Negro et al., 2009; Hickey et al., 2013]. Linked to this are the values used to represent the elastic medium. We converted seismic velocities to a Young's Modulus and



**Figure 5.** Source parameter frequency distributions. The colored lines (blue, red, or green, for spherical-, prolate-, or oblate-shaped sources, respectively) represent the frequency histogram data for each source shape. All four parameters solved for in the inversions are displayed: longitude (a), latitude (b), depth (c), and pressure (d). The source parameters used to define the best fit model are displayed with the diamond on the x axis. In Figure 5b, the “1” represents a second smaller congregation of spherical source locations albeit with a higher misfit than the main population of source locations.

a Poisson’s Ratio and thus obtain dynamic values, but static values are perhaps more appropriate given the slower nature of volcanic deformation in comparison to the propagation of seismic waves [Gudmundsson, 2011]. As static moduli can be up to 13 times smaller than dynamic moduli [Gudmundsson, 2011], this would give a smaller  $\Delta P$  estimate proportional to that factor for a linearly elastic domain. In this case, our modeled overpressure may actually be below any static reservoir failure criterion.

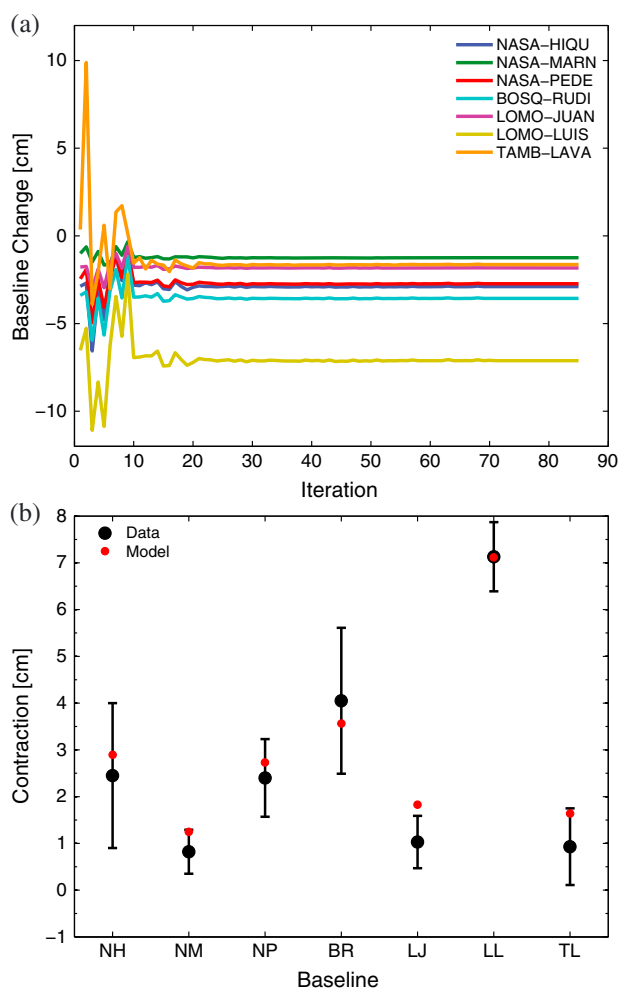
In reality, however, the rocks encasing a magmatic reservoir are unlikely to behave in an elastic manner due to high thermal gradients and numerous microfractures. Viscoelastic behavior is more likely in this case, which brings the applicability of a static limiting overpressure into disregard due to viscous dissipation of stress acting to relieve the building pressure and expansion of the reservoir boundaries by solid-state creep [e.g., Jellinek and DePaolo, 2003]. Hence, a dynamic failure criterion based on a critical strain rate is perhaps more appropriate [e.g., Gottsmann and Odbert, 2014], and the 80 MPa value for  $\Delta P$  is of less significance.

Regardless of any line of argument presented above, there is the possibility that in the present case the small reservoir SSW of the edifice did indeed “fail” and contribute to a migration of fluids to the NE. This is discussed in a later section.

### 3.2.2. Influence of Thermomechanics

When the effect of temperature is included in the models via a temperature-dependent viscoelastic setup, there is a reduction in the required overpressure to fit the same deformation pattern. The thermomechanical model setup was applied to the best fit model from the inversions (described above), and for the given settings  $\Delta P$  was reduced by 25% to 60 MPa when applied as a constant throughout the simulation. The resultant  $\Delta V$  remained at  $\sim 20 \times 10^6 \text{ m}^3$  (due to viscous expansion following the instantaneous elastic inflation) and explains how the same amplitudes of surface deformation can still be met.

The thermomechanical setup also introduces a time-dependent aspect into the model. However, as the temporal resolution of the EDM data is poor, and also varies between baselines, it does not warrant a full in-depth study of the influence of temperature-dependent viscoelasticity and time-dependent pressurization on deformation predictions [e.g., Gottsmann and Odbert, 2014]. Instead, we use the setup described to examine the rheology of the magma reservoir host rock.



**Figure 6.** Modeled EDM baselines for the best fit model. (a) The modeled values from the inversion for the EDM baseline changes converge to their near-final values after approximately 25 iterations. (b) The end results (red circles) fit six out of seven of the measured EDM observations (black circles with error bounds).

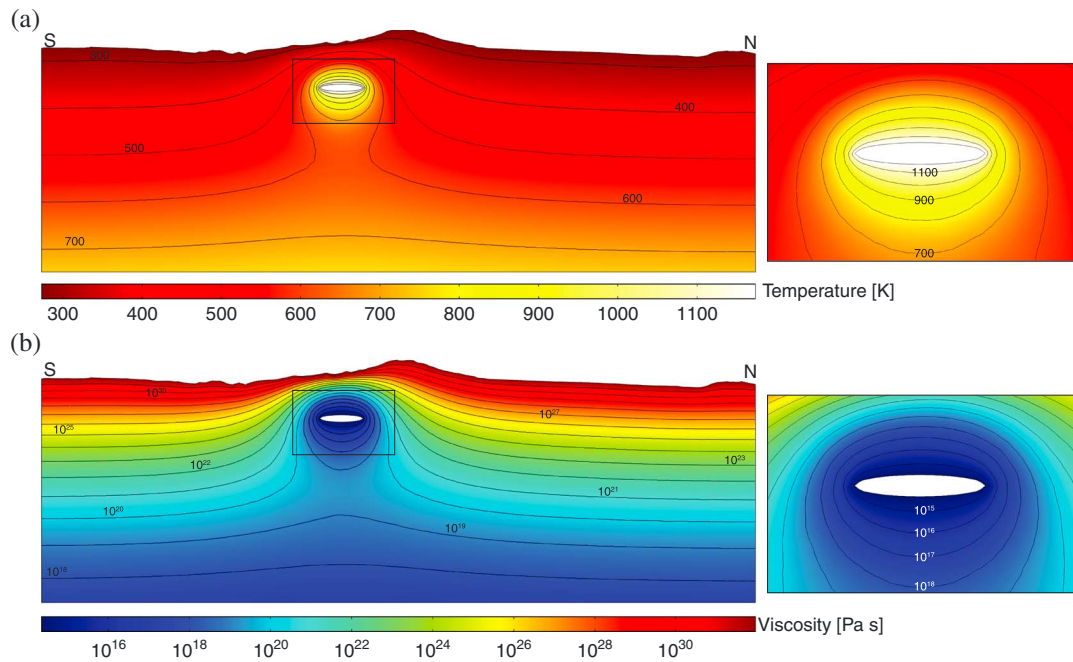
the basal heat flux, still result in viscosities of  $10^{14.3}$  Pa s around the chamber (although they do alter the background temperature which would influence the resultant surface deformation). Changes to the surface temperature also do not affect the viscosity of the host rock. The most important controls are the source temperature, and the activation energy (used in equation (8)). Magmatic temperatures at Cotopaxi have been estimated between 743 and 1673 K [Garrison *et al.*, 2011], which when translated into a source temperature in the model gives viscosities between  $10^{12.7}$  and  $10^{17.4}$  Pa s at the host rock interface. Activation energies between 105 and 165 KJ/mol [Meissner and Tanner, 1992] give viscosities between  $10^{13.7}$  and  $10^{16.3}$  Pa s. The combined results give a potential range in viscosity of  $10^{12.7}$ – $10^{17.4}$  Pa s for the magma reservoir host rock. However, in reality, it is possible that the scenarios with the lower range of viscosities would become part of a “capture front” [Marsh, 1996], given that a viscosity of  $10^{16}$  is often used as an indicator of a magmatic “mush” zone. Either way, the host rocks would certainly respond in a viscoelastic manner.

### 3.3. Resolving the Deformation and the Seismicity

With the observed seismicity in the NE and the origin of the deformation in the SW-SSW, there is an initial discrepancy when trying to resolve the two with the same source. Here we explore a potential mechanism to reconcile the deformation and seismicity simultaneously.

The settings employed in this study predict rocks with a viscosity of  $10^{14.3}$  Pa s immediately at the magma reservoir boundary (Figure 7). This result is dependent on the steady state temperature distribution that is calculated in the model (Figure 7), which of course may not reflect true subsurface conditions. A steady state temperature distribution requires a certain amount of time to reach equilibrium, so if this time has not passed, the heat from the hot zone(s) will not have conducted as far through the crust, and the general temperature distribution will be reduced. On the other hand, if a hydrothermal system is present (something the current model does not incorporate) heat could be convected away from the source more efficiently and the temperature distribution would be increased. Therefore, the temperature distributions presented here serve only as first-order estimates and assume a thermal legacy in the system resulting from the previous eruptive history.

Consequently, we test how variability in the parameters used to calculate temperature and viscosity can influence the resultant rheology of the host rock. The values of thermal conductivity and heat capacity are somewhat obsolete in the steady state simulation as they only affect the time it takes for heat to conduct and materials to warm up, respectively. Geologically plausible variations in the geothermal gradient (20–60 K/km), input as variations in



**Figure 7.** Best fit thermomechanical model temperature and viscosity distributions. (a) The steady state temperature distribution solved from the initial thermo-mechanical boundary conditions and heat transfer parameters. The inset clearly shows the elevated temperatures around the source. (b) The viscosity distribution resulting from the temperature solution in Figure 7a, calculated from equation (8). High temperatures around the source produce rocks that behave in an increasingly viscoelastic manner.

### 3.3.1. Aseismic Inflation

Given there was no elevated seismicity recorded in the SW during this unrest period, perhaps the processes that lead to the best fit reservoir being pressurized proceeded aseismically. This can be the case when rocks behave in a ductile manner, which is more likely when the rocks are presumed to be heated, weakened, and viscoelastic [Jaeger *et al.*, 2007]. Ductility is then expected when the timescale of a forcing process is significantly longer than the Maxwell viscoelastic relaxation time of the rock [Dragoni, 1993].

To test the hypothesis that the inflation of the small magma reservoir inferred beneath Cotopaxi proceeded aseismically, we compare the elastic pressurization timescale to the viscoelastic timescale using the equations presented in Jellinek and DePaolo [2003]. The elastic timescale equation was derived for a spherical source but can still provide a first-order approximation when comparing the two timescales for our best fit oblate-shaped source. The elastic timescale,  $\tau_e$ , is

$$\tau_e = \frac{3\Delta P_{crit}V_{ch}}{2QE} \quad (9)$$

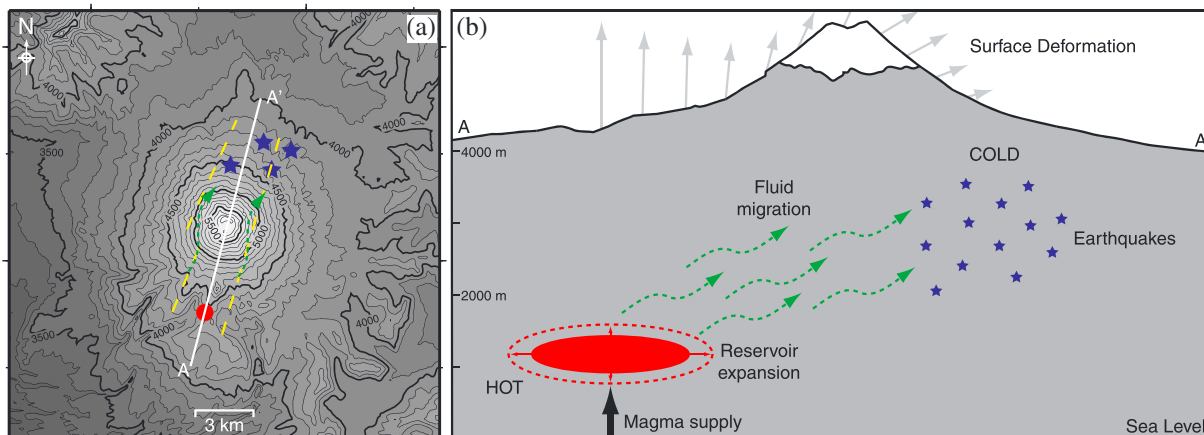
where  $\Delta P_{crit}$  is the critical overpressure to fail a chamber,  $V_{ch}$  is the volume of the chamber (in this case  $\frac{4}{3}\pi ab^2$ ) and  $Q$  is the time-averaged magma influx [Jellinek and DePaolo, 2003]. The general Maxwell viscoelastic timescale,  $\tau_v$ , is

$$\tau_v = \frac{\eta}{E} \quad (10)$$

and aseismic deformation is expected if  $\tau_v \ll \tau_e$ . Hence, we can rewrite the equations in order to express them in terms of a required host rock viscosity value:

$$\eta \ll \frac{3\Delta P_{crit}V_{ch}}{2Q} \quad (11)$$

To solve equation (11) we use a range in  $\Delta P_{crit}$  of 1–31 MPa, 0.03–0.3 m<sup>3</sup>/s for the magma influx [Jellinek and DePaolo, 2003; Annen, 2009], and the volume of the best fit modeled source ( $2.36 \times 10^9$  m<sup>3</sup>). The resultant



**Figure 8.** Schematic overview of the 2001–2002 unrest period. (a) Map view of the mechanism proposed to simultaneously explain seismicity in the NE (blue stars) and a deformation source in the SW (red circle). (b) A cross-section through the map view along the A–A' transect. Magma is supplied to the reservoir inferred from the inversion of EDM geodetic data. The pressurization of this reservoir causes deformation at the surface and fluids to migrate (green arrows). The fluids preferentially travel along the NNE–SSW trending faults (dashed yellow lines) which produce the VLP and LP signals that are observed, while the VTs are a result of increased fluid pressure in cracks/pores in a colder, more brittle part of the crust. The best fit modeled deformation source (solid red ellipse) and topography are drawn to scale. See the text for more details.

viscosity is  $10^{16.1}–10^{18.6}$  Pa s. In the most part the broad range in host rock viscosity values inferred from the thermomechanical models ( $10^{12.7}–10^{17.4}$  Pa s) are indeed smaller, and we can thus propose that the reservoir pressurization occurred aseismically.

### 3.3.2. Fluid Migration and Seismicity

The seismicity source proposed by *Molina et al.* [2008] cannot explain the observed deformation. However, if we assume the NE seismicity locations to be robust, we can explain both the seismicity and the deformation with the best fit model inferred from the EDM measurements.

We propose a mechanism whereby magma supply and pressurization of the magma reservoir initiated a migration of hydrothermal and/or magmatic fluids. This could have been caused by one, or a combination of, a change in the local stress field, a temperature increase, or fresh fluid injection. The fluids would flow most efficiently along the NNE–SSW trending faults [*Fiorini and Tibaldi, 2012*], which could take them into the NE quadrant of the volcano from the source in the SW. Fluid movement and mass transport have long been proposed as the causes of LP and VLP seismicity [*Chouet, 2003; McNutt, 2005*] so this could explain the presence of both types of signals in the NE during the 2001–2002 unrest period. Where the fluids move away from a hot magmatic zone into colder parts of the crust, the rocks would become increasingly brittle. Hence, the VT signals could be the result of excess fluid and gas pressure in cracks and pores. Our mechanism, similar to that proposed for LPs and VTs at Cotopaxi between 1989 and 1997 [*Ruiz et al., 1998*], is summarized in Figure 8.

## 4. Implications for Eruption Forecasting

Clusters of eruptions are known to occur at Cotopaxi when there is an increase in the time-averaged magma supply rate, which may be modulated by a deep magmatic reservoir [*Pistolesi et al., 2011*]. We have inferred a small shallow reservoir from the inversion of EDM data, which could allude toward some connection between the two levels of magma storage. A column of hot material is proposed to exist beneath the volcano from depths of  $-8$  km to  $+4$  km which contributes toward the creation of LP signals [*Ruiz et al., 1998*]. This column may in fact represent a complex plumbing system that connects a deeper reservoir to shallower storage regions. Assuming this plumbing system geometry, we can infer that the current magma supply rate is low due to the lack of eruptions and aseismic inflation (following equation (9), a higher magma supply rate would decrease  $\tau_e$  and hence increase the likelihood of seismicity). If the magma supply rate increases and there is recorded seismicity accompanying the deformation, then this may be indicative of a critical level of unrest that precedes a forthcoming eruption. Work to constrain the deeper system through evaluation of a wider deformation field and the nature of the fluid movement through gravimetric studies should form part of a subsequent study.



## 5. Conclusions

Using the recorded patterns of seismicity and deformation, we have presented a viable mechanism to explain a period of unrest at Cotopaxi volcano between 2001 and 2002. A thorough examination of the EDM deformation data set indicated a general expansion of the entire edifice. Inverse finite element models that account for material heterogeneities and surface topography while searching for the optimum deformation parameters converge on a solution for a small, shallow source SW-SSW of the edifice. Sequences of nested parameter constraint grids ensured a robust solution. The best fit model is an oblate source with  $a = 0.25$  km and  $b = 1.50$  km, at the location  $X = -78.447^\circ$ ,  $Y = -0.724^\circ$ ,  $Z = 1.17$  km, and a volume change of  $\Delta V \approx 20 \times 10^6 \text{ m}^3$ .

A deformation source in the SW contrasts strongly with the source proposed in the NE by Molina *et al.* [2008] to explain the seismicity. However, predicted EDM baseline results were especially poor when the deformation source was restricted to the NE. Therefore, to reconcile the deformation and seismicity simultaneously, we use thermomechanical viscoelastic finite element models and comparisons of elastic and viscous timescales to show that the pressurization of the shallow magma reservoir proceeded aseismically. Subsequent fluid migration from the SW into the NE along NNE-SSW trending faults caused the seismicity due to mass transport and excess pore pressures. The lack of eruption following this unrest period and the aseismic nature of the magmatic recharge indicate that the magma supply rate was low. Future unrest episodes where measurable seismicity accompanies the deforming magma reservoir could be indicative of a higher magma supply rate and a critical level of unrest that could precede a forthcoming eruption.

## Acknowledgments

The data informing this paper is available upon request to the lead author. This work was supported by the European Commission, Framework Program 7 (grant 282759, VUELCO, and grant 308665, MEDSUV), the Natural Environmental Research Council (NE/G01843X/1), and the Royal Society (UF090006). We thank reviewers A. Gudmundsson and L. Crescentini, and Editor A. Revil, for their comments which helped to improve the paper. We also thank Mark Jellinek for thoughtful discussions during manuscript preparation.

## References

- Aguilera, E., M. T. Pareschi, M. Rosi, and G. Zanchetta (2004), Risk from lahars in the northern valleys of Cotopaxi volcano (Ecuador), *Nat. Hazards*, *33*(2), 161–189, doi:10.1023/B:NHAZ.0000037037.03155.23.
- Annen, C. (2009), From plutons to magma chambers: Thermal constraints on the accumulation of eruptible silicic magma in the upper crust, *Earth Planet. Sci. Lett.*, *284*(3–4), 409–416, doi:10.1016/j.epsl.2009.05.006.
- Barberi, F., M. Coltelli, A. Frullani, M. Rosi, and E. Almeida (1995), Chronology and dispersal characteristics of recently (last 5000 years) erupted tephra of Cotopaxi (Ecuador): Implications for long-term eruptive forecasting, *J. Volcanol. Geotherm. Res.*, *69*(3–4), 217–239, doi:10.1016/0377-0273(95)00017-8.
- Beauducel, F., G. D. Natale, F. Obrizzo, and F. Pingue (2004), 3-D modelling of Campi Flegrei ground deformations: Role of caldera boundary discontinuities, *Pure Appl. Geophys.*, *161*(7), 1329–1344, doi:10.1007/s00024-004-2507-4.
- Brocher, T. M. (2005), Empirical relations between elastic wavespeeds and density in the Earth's crust, *Bull. Seismol. Soc. Am.*, *95*(6), 2081–2092, doi:10.1785/0120050077.
- Champenois, J., V. Pinel, S. Baize, L. Audin, H. Jomard, A. Hooper, A. Alvarado, and H. Yepes (2014), Large-scale inflation of Tungurahua volcano (Ecuador) revealed by Persistent Scatterers SAR interferometry, *Geophys. Res. Lett.*, *41*, 5821–5828, doi:10.1002/2014GL060956.
- Chouet, B. (2003), Volcano seismology, *PPure Appl. Geophys.*, *160*(3), 739–788, doi:10.1007/PL00012556.
- Del Negro, C., G. Currenti, and D. Scandura (2009), Temperature-dependent viscoelastic modeling of ground deformation: Application to Etna volcano during the 1993–1997 inflation period, *Phys. Earth Planet. Inter.*, *172*(3–4), 299–309, doi:10.1016/j.pepi.2008.10.019.
- Delaney, P., and D. McTigue (1994), Volume of magma accumulation or withdrawal estimated from surface uplift or subsidence, with application to the 1960 collapse of Kilauea Volcano, *Bull. Volcanol.*, *56*, 417–424.
- Dragoni, M. (1993), The brittle-ductile transition in tectonic boundary zones, *Ann. Geofis.*, *36*(2), 37–44.
- Dragoni, M., and C. Magnanensi (1989), Displacement and stress produced by a pressurized, spherical magma chamber, surrounded by a viscoelastic shell, *Phys. Earth Planet. Inter.*, *56*(3–4), 316–328, doi:10.1016/0031-9201(89)90166-0.
- Fiorini, E., and A. Tibaldi (2012), Quaternary tectonics in the central Interandean Valley, Ecuador: Fault-propagation folds, transfer faults and the Cotopaxi Volcano, *Global Planet. Change*, *90–91*, 87–103, doi:10.1016/j.gloplacha.2011.06.002.
- Folch, A., and J. Gottsmann (2006), Faults and ground uplift at active calderas, in *Mechanisms of Activity and Unrest at Large Calderas*, edited by C. Troise, G. De Natale, and C. Kilburn, *Geol. Soc. Spec. Publ.*, 109–120. U. K.
- Font, Y., M. Segovia, S. Vaca, and T. Theunissen (2013), Seismicity patterns along the Ecuadorian subduction zone: New constraints from earthquake location in a 3-D a priori velocity model, *Geophys. J. Int.*, *193*(1), 263–286, doi:10.1093/gji/ggs083.
- Garrison, J. M., J. P. Davidson, M. Hall, and P. Mothes (2011), Geochemistry and petrology of the most recent deposits from Cotopaxi Volcano, Northern Volcanic Zone, Ecuador, *J. Petrol.*, *52*(9), 1641–1678, doi:10.1093/petrology/egr023.
- Geyer, A., and J. Gottsmann (2010), The influence of mechanical stiffness on caldera deformation and implications for the 1971–1984 Rabaul uplift (Papua New Guinea), *Tectonophysics*, *483*(3–4), 399–412, doi:10.1016/j.tecto.2009.10.029.
- Gottsmann, J., and H. Odbert (2014), The effects of thermomechanical heterogeneities in island arc crust on time-dependent preeruptive stresses and the failure of an andesitic reservoir, *J. Geophys. Res. Solid Earth*, *119*, 4626–4639, doi:10.1002/2014JB011079.
- Gregg, P., S. de Silva, E. Grosfils, and J. Parmigiani (2012), Catastrophic caldera-forming eruptions: Thermomechanics and implications for eruption triggering and maximum caldera dimensions on Earth, *J. Volcanol. Geotherm. Res.*, *241–242*, 1–12, doi:10.1016/j.jvolgeores.2012.06.009.
- Gudmundsson, A. (2006), How local stresses control magma-chamber ruptures, dyke injections, and eruptions in composite volcanoes, *Earth Sci. Rev.*, *79*(1–2), 1–31, doi:10.1016/j.earscirev.2006.06.006.
- Gudmundsson, A. (2009), Toughness and failure of volcanic edifices, *Tectonophysics*, *471*(1–2), 27–35, doi:10.1016/j.tecto.2009.03.001.
- Gudmundsson, A. (2011), *Rock Fractures in Geological Processes*, Cambridge Univ. Press, New York.
- Gudmundsson, A. (2012), Magma chambers: Formation, local stresses, excess pressures, and compartments, *J. Volcanol. Geotherm. Res.*, *237–238*, 19–41, doi:10.1016/j.jvolgeores.2012.05.015.



- Hall, M., and P. Mothes (2008), The rhyolitic-andesitic eruptive history of Cotopaxi volcano, Ecuador, *Bull. Volcanol.*, *70*(6), 675–702, doi:10.1007/s00445-007-0161-2.
- Hall, M., P. Samaniego, J. Le Pennec, and J. Johnson (2008), Ecuadorian Andes volcanism: A review of Late Pliocene to present activity, *J. Volcanol. Geotherm. Res.*, *176*(1), 1–6, doi:10.1016/j.jvolgeores.2008.06.012.
- Hautmann, S., J. Gottsmann, R. S. J. Sparks, G. S. Mattioli, I. S. Sacks, and M. H. Strutt (2010), Effect of mechanical heterogeneity in arc crust on volcano deformation with application to Soufrière Hills Volcano, Montserrat, West Indies, *J. Geophys. Res.*, *115*, B09203, doi:10.1029/2009JB006909.
- Hickey, J., and J. Gottsmann (2014), Benchmarking and developing numerical finite element models of volcanic deformation, *J. Volcanol. Geotherm. Res.*, *280*, 126–130, doi:10.1016/j.jvolgeores.2014.05.011.
- Hickey, J., J. Gottsmann, and R. del Potro (2013), The large-scale surface uplift in the Altiplano-Puna region of Bolivia: A parametric study of source characteristics and crustal rheology using finite element analysis, *Geochem. Geophys. Geosyst.*, *14*(3), 540–555, doi:10.1002/ggge.20057.
- Jaeger, J. C., N. G. W. Cook, and R. W. Zimmerman (2007), *Fundamentals of Rock Mechanics*, Blackwell, Malden, Mass.
- Jellinek, A. M., and D. J. DePaolo (2003), A model for the origin of large silicic magma chambers: Precursors of caldera-forming eruptions, *Bull. Volcanol.*, *65*(5), 363–381, doi:10.1007/s00445-003-0277-y.
- Jordan, E. (1983), Die Vergletscherung des Cotopaxi Ecuador, *Zeitsch Gletsh Glazial*, *19*(1), 73–102.
- Kinzig, H., A. Geyer, and J. Gottsmann (2009), On the effect of crustal layering on ring-fault initiation and the formation of collapse calderas, *J. Volcanol. Geotherm. Res.*, *186*(3–4), 293–304, doi:10.1016/j.jvolgeores.2009.07.007.
- Kumagai, H., P. Palacios, T. Maeda, D. B. Castillo, and M. Nakano (2009), Seismic tracking of lahars using tremor signals, *J. Volcanol. Geotherm. Res.*, *183*(1–2), 112–121, doi:10.1016/j.jvolgeores.2009.03.010.
- Kumagai, H., M. Nakano, T. Maeda, H. Yepes, P. Palacios, M. Ruiz, S. Arrais, M. Vaca, I. Molina, and T. Yamashima (2010), Broad-band seismic monitoring of active volcanoes using deterministic and stochastic approaches, *J. Geophys. Res.*, *115*, B08303, doi:10.1029/2009JB006889.
- Kumagai, H., R. Lacson, Y. Maeda, M. S. Figueroa, T. Yamashina, M. Ruiz, P. Palacios, H. Ortiz, and H. Yepes (2013), Source amplitudes of volcano-seismic signals determined by the amplitude source location method as a quantitative measure of event size, *J. Volcanol. Geotherm. Res.*, *257*, 57–71, doi:10.1016/j.jvolgeores.2013.03.002.
- Marsh, B. D. (1996), Solidification fronts and magmatic evolution, *Mineral. Mag.*, *60*, 5–40.
- Masterlark, T. (2007), Magma intrusion and deformation predictions: Sensitivities to the Mogi assumptions, *J. Geophys. Res.*, *112*, B06419, doi:10.1029/2006JB004860.
- McNutt, S. R. (2005), Volcanic seismology, *Annu. Rev. Earth Planet. Sci.*, *33*(1), 461–491, doi:10.1146/annurev.earth.33.092203.122459.
- Meissner, R., and B. Tanner (1992), Crustal viscosities and seismic velocities, *Phys. Earth Planet. Inter.*, *69*(3–4), 252–256, doi:10.1016/0031-9201(92)90143-J.
- Molina, I., H. Kumagai, A. García-Aristizábal, M. Nakano, and P. Mothes (2008), Source process of very-long-period events accompanying long-period signals at Cotopaxi Volcano, Ecuador, *J. Volcanol. Geotherm. Res.*, *176*(1), 119–133, doi:10.1016/j.jvolgeores.2007.07.019.
- Mothes, P., M. L. Hall, and R. J. Janda (1998), The enormous Chillós Valley Lahar: An ash-flow-generated debris flow from Cotopaxi Volcano, Ecuador, *Bull. Volcanol.*, *59*(4), 233–244, doi:10.1007/s004450050188.
- Newman, A. V., T. H. Dixon, and N. Gourmelen (2006), A four-dimensional viscoelastic deformation model for Long Valley Caldera, California, between 1995 and 2000, *J. Volcanol. Geotherm. Res.*, *150*(1–3), 244–269, doi:10.1016/j.jvolgeores.2005.07.017.
- Pistolesi, M., M. Rosi, R. Cioni, K. V. Cashman, A. Rossotti, and E. Aguilera (2011), Physical volcanology of the post-twelfth-century activity at Cotopaxi volcano, Ecuador: Behavior of an andesitic central volcano, *Geol. Soc. Am. Bull.*, *123*(5–6), 1193–1215, doi:10.1130/B30301.1.
- Pistolesi, M., R. Cioni, M. Rosi, K. V. Cashman, A. Rossotti, and E. Aguilera (2013), Evidence for lahar-triggering mechanisms in complex stratigraphic sequences: The post-twelfth century eruptive activity of Cotopaxi Volcano, Ecuador, *Bull. Volcanol.*, *75*(3), 1–18, doi:10.1007/s00445-013-0698-1.
- Powell, M. J. D. (2009), The BOBYQA algorithm for bound constrained optimization without derivatives, *Tech. Rep. DAMTP 2009/NA06*, Report for Department of Applied Mathematics and Theoretical Physics, Univ. of Cambridge.
- Ranalli, G. (1995), *Rheology of the Earth*, Chapman and Hall, London, U. K.
- Ruiz, M., B. Guillier, J.-L. Chatelain, H. Yepes, M. Hall, and P. Ramon (1998), Possible causes for the seismic activity observed in Cotopaxi volcano, Ecuador, *Geophys. Res. Lett.*, *25*(13), 2305–2308.
- Smith, R., P. R. Sammonds, and C. R. Kilburn (2009), Fracturing of volcanic systems: Experimental insights into pre-eruptive conditions, *Earth Planet. Sci. Lett.*, *280*(1–4), 211–219, doi:10.1016/j.epsl.2009.01.032.
- Trasatti, E., C. Giunchi, and M. Bonafede (2003), Effects of topography and rheological layering on ground deformation in volcanic regions, *J. Volcanol. Geotherm. Res.*, *122*, 89–110.
- Williams, C., and G. Wadge (1998), The effects of topography on magma chamber deformation models: Application to Mt. Etna and radar interferometry, *Geophys. Res. Lett.*, *25*(10), 1549–1552.
- Williams, C., and G. Wadge (2000), An accurate and efficient method for including the effects of topography in three-dimensional elastic models of ground deformation with applications to radar interferometry, *J. Geophys. Res.*, *105*(B4), 8103–8120.
- Zhang, Z. (2002), An empirical relation between mode I fracture toughness and the tensile strength of rock, *Int. J. Rock Mech. Min. Sci.*, *39*(3), 401–406, doi:10.1016/S1365-1609(02)00032-1.