

## RESEARCH ARTICLE

# The Influence of Different Fever Definitions on the Rate of Fever in Neutropenia Diagnosed in Children with Cancer

Roland A. Ammann<sup>1\*</sup>, Oliver Teuffel<sup>1,2</sup>, Philipp Agyeman<sup>1,3</sup>, Nadine Amport<sup>1</sup>, Kurt Leibundgut<sup>1</sup>

**1** Department of Pediatrics, University of Bern, Bern, Switzerland, **2** Division of Oncology, Medical Services of the Statutory Health Insurance Baden-Württemberg, Tübingen, Germany, **3** Institute for Infectious Diseases, University of Bern, Bern, Switzerland

\* [roland.ammann@insel.ch](mailto:roland.ammann@insel.ch)


 OPEN ACCESS

**Citation:** Ammann RA, Teuffel O, Agyeman P, Amport N, Leibundgut K (2015) The Influence of Different Fever Definitions on the Rate of Fever in Neutropenia Diagnosed in Children with Cancer. *PLoS ONE* 10(2): e0117528. doi:10.1371/journal.pone.0117528

**Academic Editor:** Paul J. Galardy, Mayo Clinic, UNITED STATES

**Received:** September 4, 2014

**Accepted:** December 26, 2014

**Published:** February 11, 2015

**Copyright:** © 2015 Ammann et al. This is an open access article distributed under the terms of the [Creative Commons Attribution License](http://creativecommons.org/licenses/by/4.0/), which permits unrestricted use, distribution, and reproduction in any medium, provided the original author and source are credited.

**Data Availability Statement:** Ethical and legal restrictions prevent public sharing of data. Data may be requested from Thomas Riedel ([thomas.riedel@insel.ch](mailto:thomas.riedel@insel.ch)), Head, IRB, Ethikkommission der Universitätskinderkliniken, University of Bern, Department of Pediatrics, Inselspital and from Roland A. Ammann MD ([roland.ammann@insel.ch](mailto:roland.ammann@insel.ch)), University of Bern, Department of Pediatrics, Inselspital, Bern, Switzerland.

**Funding:** This study was supported by an unrestricted research grant from the Swiss Cancer League (Grant No. KLS-2933-02-2012). The funders

## Abstract

### Background

The temperature limit defining fever (TLDF) is based on scarce evidence. This study aimed to determine the rate of fever in neutropenia (FN) episodes additionally diagnosed by lower versus standard TLDF.

### Methods

In a single center using a high TLDF (39.0°C tympanic temperature, Limit<sub>Standard</sub>), pediatric patients treated with chemotherapy for cancer were observed prospectively. Results of all temperature measurements and CBCs were recorded. The application of lower TLDFs (Limit<sub>Low</sub>; range, 37.5°C to 38.9°C) versus Limit<sub>Standard</sub> was simulated *in silicon*, resulting in three types of FN: simultaneous FN, diagnosed at both limits within 1 hour; earlier FN, diagnosed > 1 hour earlier at Limit<sub>Low</sub>; and additional FN, not diagnosed at Limit<sub>Standard</sub>.

### Results

In 39 patients, 8896 temperature measurements and 1873 CBCs were recorded during 289 months of chemotherapy. Virtually applying Limit<sub>Standard</sub> resulted in 34 FN diagnoses. The predefined relevantly ( $\geq 15\%$ ) increased FN rate was reached at Limit<sub>Low</sub> 38.4°C, with total 44 FN, 23 simultaneous, 11 earlier, and 10 additional (Poisson rate ratio<sub>Additional/Standard</sub>, 0.29; 95% lower confidence bound, 0.16). Virtually applying 37.5°C as Limit<sub>Low</sub> led to earlier FN diagnosis (median, 4.5 hours; 95% CI, 1.0 to 20.8), and to 53 additional FN diagnosed. In 51 (96%) of them, spontaneous defervescence without specific therapy was observed in reality.

### Conclusion

Lower TLDFs led to many additional FN diagnoses, implying overtreatment because spontaneous defervescence was observed in the vast majority. Lower TLDFs led as well to

had no role in study design, data collection and analysis, decision to publish, or preparation of the manuscript.

**Competing Interests:** The authors have declared that no competing interests exist.

relevantly earlier diagnosis in a minority of FN episodes. The question if the high TLDF is not only efficacious but as well safe remains open.

## Introduction

Fever in severe chemotherapy-induced neutropenia (hereafter fever in neutropenia, FN), is the most frequent potentially lethal complication of therapy in patients with cancer [1]. Despite its clinical importance, however, fever and thus FN are not consistently defined in pediatric oncology. A widely used fever definition, specifically, temperature limits defining fever (TLDF), encompasses a persistent temperature  $\geq 38.0^{\circ}\text{C}$ , or a single temperature  $\geq 38.3^{\circ}\text{C}$  [2] or  $\geq 38.5^{\circ}\text{C}$  [3], but definitions used clinically and in research range from  $37.5^{\circ}\text{C}$  to  $39.0^{\circ}\text{C}$  [3–6]. This wide range reflects that both an international consensus on TLDF is missing [7], and that national consensus-based policies are incompletely implemented locally [3, 8].

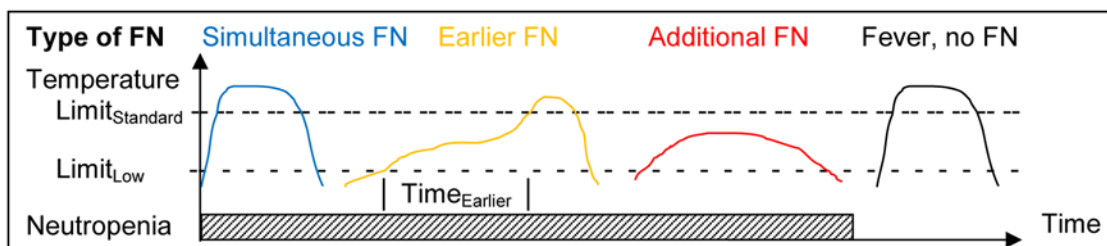
The TLDF, however, directly influences whether FN is diagnosed or not, usually implying emergency hospitalization and intravenous broad-spectrum antimicrobial therapy as current standard of care [7]. The TLDF has thus important implications on individual patient management, health-related quality of life, resource utilization, costs, and potentially treatment-related mortality [9–11]. Efficacy must be weighed against safety for the determination of an ideal TLDF. A high TLDF emphasizes efficacy by avoiding unnecessary FN diagnoses in patients without relevant infections who will spontaneously defervesce (Fig. 1) [6]. A low TLDF emphasizes safety by avoiding delays in FN diagnosis and start of empirical antimicrobial therapy. Such delays may increase morbidity and mortality in patients with bacterial infection [12]. There is very scarce evidence how to rationally determine this ideal TLDF. To our knowledge, there is no published or ongoing prospective study on the efficacy or safety of different TLDFs in pediatric or adult oncology. A single Swiss two-center retrospective study reported no significant difference in the rate of FN, and of FN with bacteremia, between temperature limits of  $38.5^{\circ}\text{C}$  and  $39.0^{\circ}\text{C}$  [6].

Based on the historically established clinical use of a high TLDF of  $39.0^{\circ}\text{C}$  in Bern [6], this prospective single-center study aimed to assess the efficacy of a high TLDF by determining the rate of additional FN diagnoses when virtually lowering it. This aim was achieved.

## Patients and Methods

### Study Design

This was a prospective single-center observational study. The intervention, virtually lowering the TLDF, and its effects were simulated *in silicon*, i.e., using software on a personal computer,



**Figure 1. Types of FN diagnoses applying a low versus high TLDF.**

doi:10.1371/journal.pone.0117528.g001

without changing the routine clinical management of patients. The study was conducted in accordance with the Declaration of Helsinki. Before starting patient accrual, the protocol was approved by the Institutional Review Board (Ethikkommission der Universitätskinderkliniken Bern) and registered at [www.clinicaltrials.com](http://www.clinicaltrials.com) (NCT01683370). Patients, if able to judge, and their legal guardians gave written informed consent prior to study entry.

## Patients

Patients aged 1 to 17 years with cancer who were treated at the Department of Pediatrics, University of Bern, Inselspital, Bern, Switzerland, and who required chemotherapy for  $\geq 2$  months at time of recruitment were eligible.

Patients were off study when informed consent was withdrawn, and when chemotherapy was completed ( $\geq 2$  weeks after last dose, and absolute neutrophil count (ANC)  $> 0.5$  G/L).

## Routine Clinical Management, Including FN

Patients were treated with chemotherapy, including myeloablative therapy followed by autologous peripheral blood stem cell transplantation, or multimodal therapy, according to internationally established protocols.

Temperature was always measured in the ear by infrared tympanic thermometry using the Braun ThermoScan 5 (IRT 4520; Braun GmbH, Kronberg, Germany; steps displayed,  $0.1^{\circ}\text{C}$ ; accuracy,  $\pm 0.2^{\circ}\text{C}$ ; clinical repeatability,  $\pm 0.14^{\circ}\text{C}$ ) [13, 14]. All parents were trained in its use during initial hospitalization and at study entry.

In inpatients, temperature was measured routinely twice a day. Additional measurements were made when fever was suspected, as well as before and during transfusions and medications known to potentially induce fever. In outpatients, parents were instructed to measure temperature when they suspected fever. If temperature was  $\geq 39.0^{\circ}\text{C}$ , or in case of reduced general condition or other problems, parents called the pediatric oncology department. An emergency complete blood count (CBC) was ordered if the last CBC was older than 48 hours. Patients with an ANC  $> 0.5$  G/L and in good general condition were allowed to take oral paracetamol for the next 48 hours. Those with an ANC  $\leq 0.5$  G/L or in reduced general condition were seen in the emergency department and usually hospitalized for FN.

FN was diagnosed when a patient had fever during a period of chemotherapy-induced severe neutropenia. Fever was defined as a single ear temperature  $\geq 39.0^{\circ}\text{C}$  (Limit<sub>standard</sub>). With increasing or plateau temperature, this TLDF corresponds to  $39.1^{\circ}\text{C}$  core temperature, and to  $38.4^{\circ}\text{C}$  axillary temperature [13]. Severe neutropenia was defined as ANC  $\leq 0.5$  G/L, or  $\leq 1.0$  G/L and expected to decline. In reality, the treating physician was free to diagnose FN at lower temperatures if clinically indicated [2]. At diagnosis of FN, patients were hospitalized and treated with empirical intravenous broad-spectrum antibiotics, usually ceftriaxone plus amikacin, plus antipyretics. Further details of management have been published [6, 15].

## Study Specific Procedures

Participation in this observational study did not influence any diagnostic nor therapeutic decisions. The parents were instructed to note results of temperature measurements clinically indicated in the outpatient setting on paper forms.

An experienced pediatric oncology nurse (N.A.) extracted information from these forms and patient charts: time and results of temperature measurements and CBCs; number of emergency calls and CBCs performed for fever; FN diagnoses; and clinical course of FN. This information was checked for plausibility and agreement with charts by a pediatric oncologist (R.A.A.) before analysis.

## Definitions

The duration of antimicrobial therapy for FN defined the duration of FN episodes. Restarting antimicrobial therapy within 7 days and with persistent neutropenia was considered to belong to the same FN episode. The TLDF used in reality ( $\text{Limit}_{\text{Reality}}$ ) was defined as the first temperature  $\geq 39.0^{\circ}\text{C}$ , or the highest temperature measured until start of antibiotics if the FN diagnosis was made at lower temperatures. Adverse events (AE) were defined as published [15], and tracked onward for 7 days after end of FN.

For analysis,  $\text{Limit}_{\text{Standard}}$  was virtually replaced by a lower TLDF ( $\text{Limit}_{\text{Low}}$ ).  $\text{Time}_{\text{Earlier}}$  was defined as the difference in time of FN diagnosis applying  $\text{Limit}_{\text{Low}}$  versus  $\text{Limit}_{\text{Standard}}$ . Three types of FN episodes were differentiated (Fig. 1). First, simultaneous FN was defined by  $\text{Time}_{\text{Earlier}} \leq 1$  hour. Second, earlier FN was defined by  $\text{Time}_{\text{Earlier}} > 1$  hour and  $\leq 168$  hours, with continued neutropenia and continued fever (temperature measured at least once  $\geq 37.5^{\circ}\text{C}$  every 24 hours) during  $\text{Time}_{\text{Earlier}}$ . Third, additional FN was defined as FN diagnosed applying  $\text{Limit}_{\text{Low}}$ , but not applying  $\text{Limit}_{\text{Standard}}$ .

For analysis, the minimum delay between two emergency calls or CBCs for fever was assumed to be 48 hours. If virtual CBCs required by  $\text{Limit}_{\text{Low}}$  did not coincide with CBCs performed, virtual ANCs were calculated assuming linear changes over time, and that the ANC was 17% of the leukocyte count (previously unpublished data from reference 15).

## Statistics

Because of non-normally distributed data, median, interquartile range (IQR), and range were calculated. Fisher's exact test, the exact Wilcoxon's rank sum test, and Kaplan-Meier estimates with their 95% confidence interval (CI) were calculated where applicable [16]. Poisson rates with exact 95% CI were calculated. Rate ratios of additional and of earlier versus standard FN diagnoses ( $\text{RR}_{\text{Early/Std}}$ ,  $\text{RR}_{\text{Add/Std}}$ ) were calculated, together with their exact 95% lower confidence bound (LCB; lower bound of the exact 90% CI).  $\text{Limit}_{\text{Low}}$  was varied between  $39.0^{\circ}\text{C}$  and  $37.5^{\circ}\text{C}$  [17].

Because of missing evidence for the definition of time limits differentiating earlier versus additional, and earlier versus simultaneous FN, corresponding sensitivity analyses were performed. For the time limit differentiating earlier versus additional FN, sensitivity analyses used 72 hours and 999 hours instead of the 168 hours used for the main analysis. For the time limit differentiating earlier versus simultaneous FN, sensitivity analyses used 4 hours instead of 1 hour used in the main analysis. This resulted in a total of 5 ( $2^*3-1$ ) sensitivity analyses besides the main analysis.

In FN diagnosed in reality below  $\text{Limit}_{\text{Standard}}$ , antipyretics preclude that temperature rises to  $\text{Limit}_{\text{Standard}}$  (Fig. 1), which would lead to an overestimation of additional FN episodes. This potential distortion was avoided by discarding information on temperature and CBC within 7 days preceding such episodes before main analysis. The clinical course of FN in reality, however, was described in the full dataset, i.e., without discarding information on these 7 days periods, in order to avoid artificial underreporting of antimicrobial therapy and of AE in FN defined by  $\text{Limit}_{\text{Low}}$ . Sample size was determined in a power analysis by 1000-fold random simulation on data of 94 historical patients from Bern with 177 FN during 81.7 years chemotherapy exposure time [18]. Assuming a 33% increase of the FN rate by applying  $\text{Limit}_{\text{Low}}$  instead of  $\text{Limit}_{\text{Standard}}$ , 32 FN episodes defined by  $\text{Limit}_{\text{Standard}}$  were found to reach 80% power to detect a clinically relevant increase of  $\geq 15\%$  in the FN rate (95% LCB of  $\text{RR}_{\text{Add/Std}} \geq 0.15$ ;  $\alpha = 0.05$ ).

The *in silico* simulation by virtually applying different TLDFs was performed in Excel 2010 spreadsheets, and the statistical analyses in R 2.15.1 (R Foundation for Statistical Computing, Vienna, Austria). *P*-values  $< 0.05$  were considered significant.

## Results

### Patients

This study was open for recruitment from August 2012 to May 2013. Of 40 eligible patients, 39 participated in the study. Their median age at recruitment was 7.4 years (range, 1.2 to 16.7), and 16 (41%) were girls. Diagnoses were acute lymphoblastic leukemia in 18 (46%) patients, acute myeloid leukemia in 2 (5%), Non-Hodgkin lymphoma in 2 (5%), central nervous system tumor in 5 (13%), and other solid tumors in 12 (31%). Four (10%) patients had relapses, and one (3%) a second malignancy.

### Chemotherapy, Temperature Measurements and CBC

The study was closed in August 2013 when the accrual goal of 32 FN episodes with fever  $\geq 39.0^{\circ}\text{C}$  ( $\text{Limit}_{\text{Reality}} \geq \text{Limit}_{\text{Standard}}$ ) was reached. The cumulative chemotherapy exposure time in 39 patients studied was 8799 days (289 months), with a median of 199 days per patient (range, 63 to 366).

During this time, temperature was recorded 8896 times, with a median rate of 26 measurements per patient per month (IQR, 8 to 53; range, 0 to 237). The median temperature measured was  $37.1^{\circ}\text{C}$  (IQR, 36.7 to 37.6; range, 35.0 to 41.2), and 283 (3.2%) temperatures were  $\geq 39.0^{\circ}\text{C}$ .

There were 1873 CBCs recorded, with a median rate of 6 CBC per patient per month (IQR, 4 to 8; range, 2 to 23). The ANC was  $\leq 0.5$  G/L in 435 CBCs (23%), 0.5 to 1.0 G/L in 244 (13%),  $> 1.0$  G/L in 1032 (55%), and unknown in 162 (9%).

### FN Episodes Diagnosed in Reality

In the 32 FN episodes diagnosed at temperatures  $\geq 39.0^{\circ}\text{C}$ , the ANC was  $\leq 0.5$  G/L in 28 (88%) episodes, and  $> 0.5$  G/L but  $\leq 1.0$  G/L and expected to decline in 4 (13%).

During the study, 11 further FN episodes, all at an ANC  $\leq 0.5$  G/L, were diagnosed at lower temperatures (range,  $38.0^{\circ}\text{C}$  to  $38.9^{\circ}\text{C}$ ) for different clinical reasons (steroid therapy for ALL within 7 days before FN, 4; AML, 2; other, 5). Male sex was more frequent in the FN episodes diagnosed  $< 39.0^{\circ}\text{C}$  versus  $\geq 39.0^{\circ}\text{C}$ , while other characteristics of patients, disease, temperature measurements before FN diagnosis, and outcomes were not significantly different ([Table 1](#)).

In total, 43 (32+11) FN episodes were diagnosed in 20 of the 39 patients (median number per patient, 1; range, 0 to 5), at a rate of 0.15 per month of chemotherapy exposure time (95% CI, 0.11 to 0.20). The median  $\text{Limit}_{\text{Reality}}$  was  $39.1^{\circ}\text{C}$  (range,  $38.0^{\circ}\text{C}$  to  $40.2^{\circ}\text{C}$ ). In 35 episodes with temperature measurements recorded within 24 hours before FN diagnosis, the median calculated temperature increase preceding FN diagnosis was  $0.40^{\circ}\text{C}$  per hour (IQR, 0.16 to 0.96; range, 0.05 to 2.80).

Twice, FN was not diagnosed and intravenous empirical antimicrobial therapy was not initiated despite fever  $\geq 39.0^{\circ}\text{C}$  during neutropenia. Both patients were in ALL maintenance therapy, had been diagnosed with an upper airway infection with good general condition within 24 hours before fulfilling FN criteria, later received oral antibiotics, with uneventful clinical course.

### Emergency Calls and CBCs at Different TLDFs

In reality, 90 emergency calls for fever were recorded. Virtually applying different TLDFs, this number reduced to 65 (72%) at  $\text{Limit}_{\text{Standard}}$ , and increased to 108 for  $38.5^{\circ}\text{C}$  (120%), to 161 for  $38.0^{\circ}\text{C}$  (179%), and to 360 for  $37.5^{\circ}\text{C}$  (400%). In reality, 59 emergency CBCs for fever were

recorded. Virtually applying different TLDFs, this number reduced to 30 (51%) at Limit<sub>Standard</sub>, and increased to 55 for 38.5°C (93%), to 81 for 38.0°C (137%), and to 179 for 37.5°C (303%).

### Diagnoses of FN at Different TLDFs

Virtually applying different TLDFs, the number of episodes of fever (with or without neutropenia) increased from 124 at Limit<sub>Standard</sub> to 291 (235%) at 38.5°C, to 604 (487%) at 38.0°C, and to 1191 (960%) at 37.5°C.

The 7 days preceding the 11 FN episodes diagnosed at Limit<sub>Reality</sub> < Limit<sub>Standard</sub> were now discarded from the dataset for the main analysis. Virtually applying Limit<sub>Standard</sub>, 34 (43–11+2) FN episodes remained. The number of FN episodes diagnosed by virtually applying Limit<sub>Low</sub> increased to 41 at 38.5°C, to 54 at 38.0°C, and to 87 at 37.5°C (Table 2, Fig. 2).

**Table 1. Characteristics and Outcome of 43 FN Episodes Diagnosed in Reality.**

Characteristic / Outcome	Temperature of FN diagnosis		P
	≥39.0°C (N = 32)	<39.0°C (N = 11)	
Characteristics of patient and disease			
Age group			0.69
1.00 to 3.99 years	6 (19%)	2 (18%)	
4.00 to 7.99 years	13 (41%)	3 (27%)	
8.00 to 11.99 years	9 (28%)	3 (27%)	
≥12 years	4 (13%)	3 (27%)	
Male sex	14 (44%)	9 (82%)	0.039
Diagnosis			0.83
ALL, preceding corticosteroid therapy	10 (31%)	4 (36%)	
ALL, other preceding therapy	9 (28%)	2 (18%)	
Acute myeloid leukemia	3 (9%)	2 (18%)	
Other diagnoses than acute leukemia	10 (31%)	3 (27%)	
Temperature measurements before FN			
Number of TM within 24 hours	3 (1 to 6)	4 (2 to 8)	0.62
Time since last TM [hours]	1.0 (0.5 to 3.8)	1.4 (0.6 to 2.6)	0.99
Increase since last TM [°C per hour]	0.60 (0.20 to 1.01)	0.31 (0.15 to 0.45)	0.19
Outcomes			
Any adverse event	14 (44%)	5 (45%)	1.00
AE, Serious medical complication	1 (3%)	1 (9%)	0.45
AE, bacteremia	4 (13%)	4 (36%)	0.17
AE, any MDI	13 (41%)	5 (45%)	1.00
AE, pneumonia	4 (13%)	1 (9%)	1.00
Length of hospitalization [days]	5.7 (3.1 to 8.5)	8.2 (4.4 to 26.6)	0.18
Length of i.v. antibiotics [days]	5.5 (3.5 to 8.5)	7.2 (3.7 to 24.9)	0.38
Length of any antibiotics [days]	5.6 (3.7 to 8.7)	10.0 (4.5 to 29.0)	0.30

Indicated are numbers (proportion of all episodes) and *P*-values from Fisher's exact test for categorical variables, and medians (interquartile range) and *P*-values from Wilcoxon's rank sum test for continuously measured variables.

AE, adverse event; ALL, acute lymphoblastic leukemia; FN, fever in neutropenia; MDI, microbiologically defined infection; TM, temperature measurement.

doi:10.1371/journal.pone.0117528.t001

**Table 2. Frequency of FN Episodes Diagnosed in Reality, and Virtually at Different Temperature Limits Defining Fever.**

Type of analysis, item	FN diagnosed in reality	FN virtually diagnosed using limit <sub>Standard</sub> or limit <sub>Low</sub>				
		39.0°C	38.5°C	38.4°C	38.0°C	37.5°C
Main analysis <sup>a</sup> (time limits 168 <sup>b</sup> , 1 <sup>c</sup> )						
Total number of FN	43 (100%)	34 (100%)	41 (100%)	44 (100%)	54 (100%)	87 (100%)
Simultaneous FN	43 (100%)	34 (100%)	24 (59%)	23 (52%)	16 (30%)	14 (16%)
Earlier FN	0	0	10 (24%)	11 (25%)	18 (33%)	20 (23%)
Additional FN	0	0	7 (17%)	10 (23%)	20 (37%)	53 (61%)
Ratio additional / early FN	-	-	0.70	0.91	1.11	2.65
Rate ratio <sub>Early/Std</sub> (95% LCB)	-	0.00	0.29 (0.16)	0.32 (0.18)	0.53 (0.34)	0.59 (0.39)
Rate ratio <sub>Additional/Std</sub> (95% LCB)	-	0.00	0.21 (0.10)	0.29 (0.16)	0.59 (0.39)	1.56 (1.22)
Sensitivity analysis <sup>a</sup> (time limits 999 <sup>b</sup> , 1 <sup>c</sup> )						
Ratio additional / early FN	-	-	0.70	0.82	0.88	1.37
Rate ratio <sub>Early/Std</sub> (95% LCB)	-	0.00	0.32 (0.18)	0.35 (0.20)	0.55 (0.35)	0.61 (0.40)
Rate ratio <sub>Additional/Std</sub> (95% LCB)	-	0.00	0.23 (0.11)	0.29 (0.15)	0.48 (0.30)	0.84 (0.59)
Sensitivity analysis <sup>a</sup> (time limits 72 <sup>b</sup> , 4 <sup>c</sup> )						
Ratio additional / early FN	-	-	1.29	1.50	1.85	4.73
Rate ratio <sub>Early/Std</sub> (95% LCB)	-	0.00	0.20 (0.09)	0.23 (0.11)	0.37 (0.22)	0.43 (0.26)
Rate ratio <sub>Additional/Std</sub> (95% LCB)	-	0.00	0.26 (0.10)	0.34 (0.16)	0.69 (0.39)	2.03 (1.22)

FN, fever in neutropenia; LCB, lower confidence bound; RR<sub>Add/Std</sub>, rate ratio additional/standard; RR<sub>Early/Std</sub>, rate ratio earlier/standard.

<sup>a</sup>7 days preceding 11 FN episodes diagnosed at Limit<sub>Reality</sub> < Limit<sub>Standard</sub> discarded from dataset;

<sup>b</sup>Time limit, in hours, differentiating earlier versus additional FN;

<sup>c</sup>Time limit, in hours, differentiating earlier versus simultaneous FN.

doi:10.1371/journal.pone.0117528.t002

The predefined clinically relevant increase of  $\geq 15\%$  in the FN rate was reached when Limit<sub>Low</sub> was 38.4°C, with 44 FN, 10 additional FN (RR<sub>Add/Std</sub>, 0.29; 95% LCB, 0.16), 23 simultaneous, and 11 earlier FN (Table 2, Fig. 2).

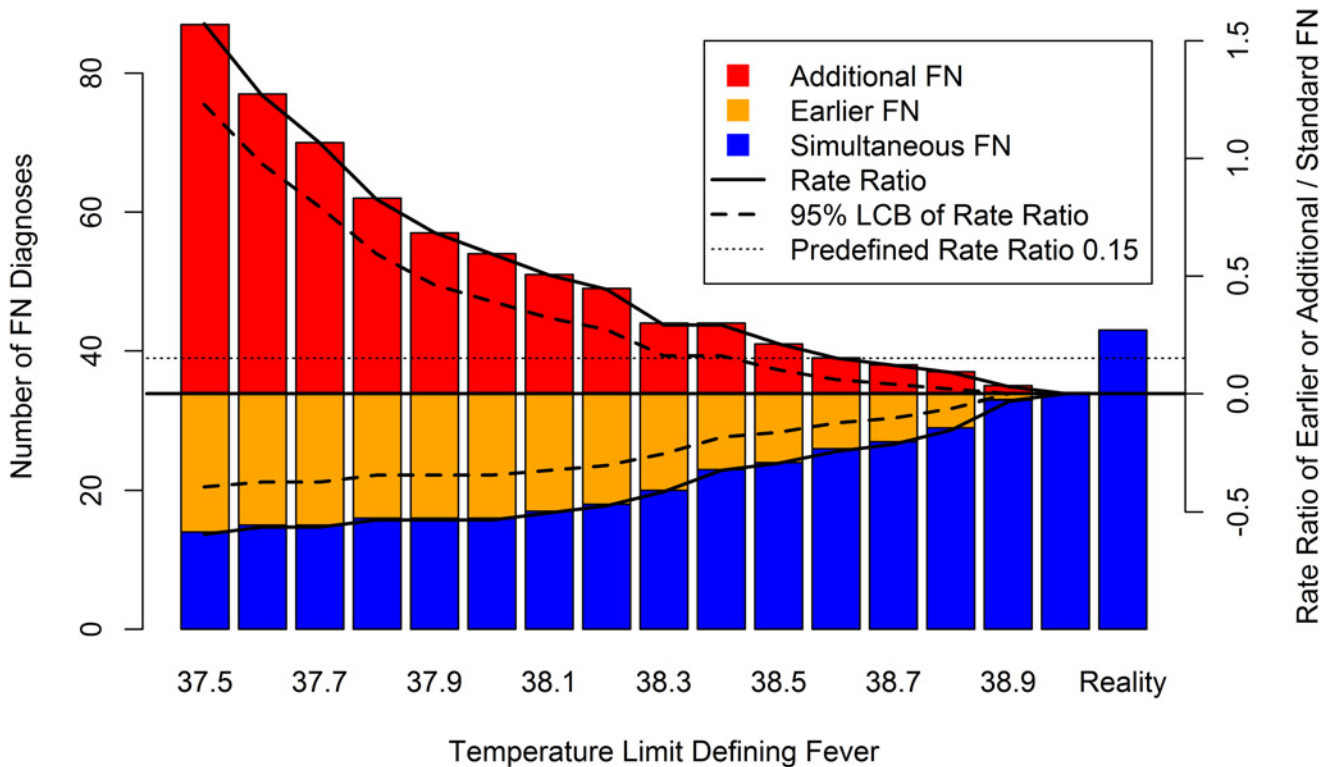
In the 34 FN episodes defined by Limit<sub>Standard</sub> the median Time<sub>Earlier</sub> was 0.3 hours (95% CI, 0.0 to 1.5) at Limit<sub>Low</sub> 38.5°C, 1.4 hours (0.8 to 8.0) at 38.0°C, and 4.5 hours (1.0 to 20.8) at 37.5°C (Fig. 3).

### Sensitivity Analyses

In all 5 sensitivity analyses, the Limit<sub>Low</sub> of 38.4°C found in the main analysis to result in the predefined increase of  $\geq 15\%$  in the FN rate (95% LCB of RR<sub>Add/Std</sub>  $\geq 0.15$ ) remained unchanged. The ratio of additional versus early FN diagnoses at this temperature was 0.91 (10/11) in the main analysis, and ranged from 0.82 (9/11) to 1.50 (12/8) in the different sensitivity analyses (Table 2). The Limit<sub>Low</sub> at and below which this ratio was always  $\geq 1$  was 38.1°C in the main analysis, and ranged from 37.8°C to 38.7°C in the different sensitivity analyses (Fig. 4).

### Adverse Events

An AE was reported in 14 (41%) of the 34 (32+2) FN episodes defined by Limit<sub>Standard</sub>, including bacteremia in 4 (12%), and a serious medical complication (SMC) in 1 (3%; diagnostic bronchoalveolar lavage in the intensive care unit for varizella zoster virus primoinfection with pneumonia; Table 2). Applying Limit<sub>Low</sub> 38.0°C, an AE was reported in 8 of 18 earlier FN episodes versus 6 of 16 simultaneous FN episodes (44% versus 38%,  $p = 0.74$ ). Overall, no significant differences were found for AE, bacteremia, and SMC between earlier and simultaneous



**Figure 2. Additional, earlier, and simultaneous FN diagnoses according to TLDF.**

doi:10.1371/journal.pone.0117528.g002

FN episodes applying  $\text{Limit}_{\text{Low}} 38.5^{\circ}\text{C}$ ,  $38.0^{\circ}\text{C}$ , and  $37.5^{\circ}\text{C}$ , but the corresponding 95% CIs, and thus uncertainty, were very large.

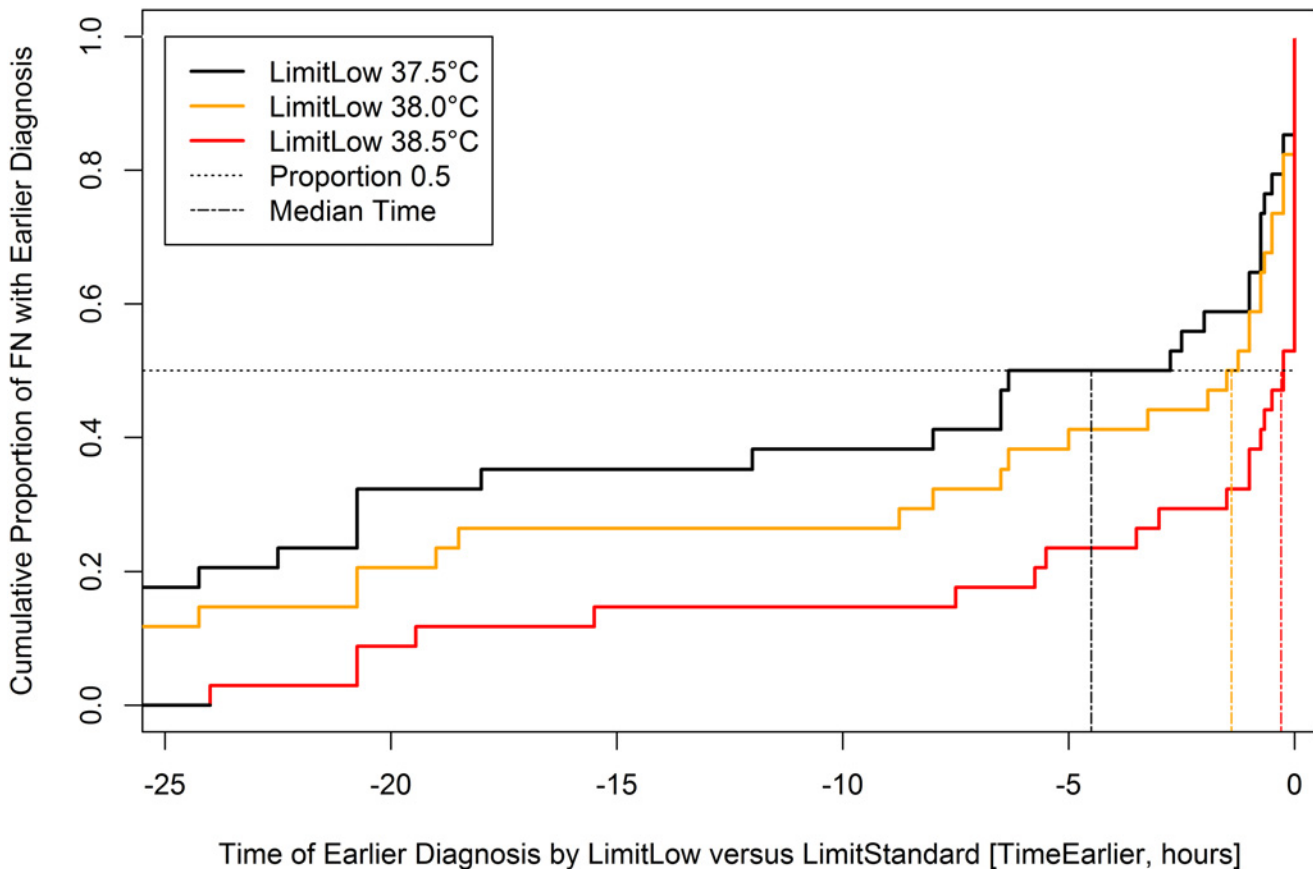
### Clinical Course in Reality

The clinical course of FN in reality was analyzed in the full dataset, i.e., without discarding information on the 7 days preceding the 11 FN episodes diagnosed at  $\text{Limit}_{\text{Reality}} < \text{Limit}_{\text{Standard}}$ . Applying  $\text{Limit}_{\text{Low}} 38.0^{\circ}\text{C}$ , 65 FN episodes would have been diagnosed in this full dataset, i.e., 31 (65–34) more FN episodes than applying  $\text{Limit}_{\text{Standard}} 39.0^{\circ}\text{C}$  (Table 3).

Because of poor general performance of the patients, an FN diagnosis implying empirical intravenous antimicrobial therapy had been made in 11 (43–32; 35%) of these 31 additional FN in reality. AE were reported in 5 of these 11 FN episodes diagnosed at temperature below  $\text{Limit}_{\text{Standard}}$ : The first patient had a positive blood culture (*Moraxella catarrhalis*), herpes zoster, candidiasis of the skin, and a bronchoalveolar lavage (negative results) was performed in the pediatric intensive care unit. The second patient had an upper respiratory tract infection with picornavirus detected. The third patient had a positive blood culture (*Enterococcus faecium*). The fourth patient had a positive blood culture (*Fusobacterium* sp.). The fifth patient had a multifocal osteomyelitis, with *Campylobacter* sp. detected by polymerase chain reaction (Table 3).

Oral antibiotics had been given in 1 (3–2; 3%) of these 31 additional FN, in which an AE was reported (upper airway infection with beginning pneumonia). No antimicrobial therapy had been given in the remaining 19 (19–0; 61%) of these 31 additional FN, of which all had an uneventful clinical course without AE (Table 3).





**Figure 3. Cumulative proportion plots of  $Time_{Earlier}$  at different  $Limit_{Low}$  in 34 FN episodes diagnosed at  $Limit_{Standard}$ .**

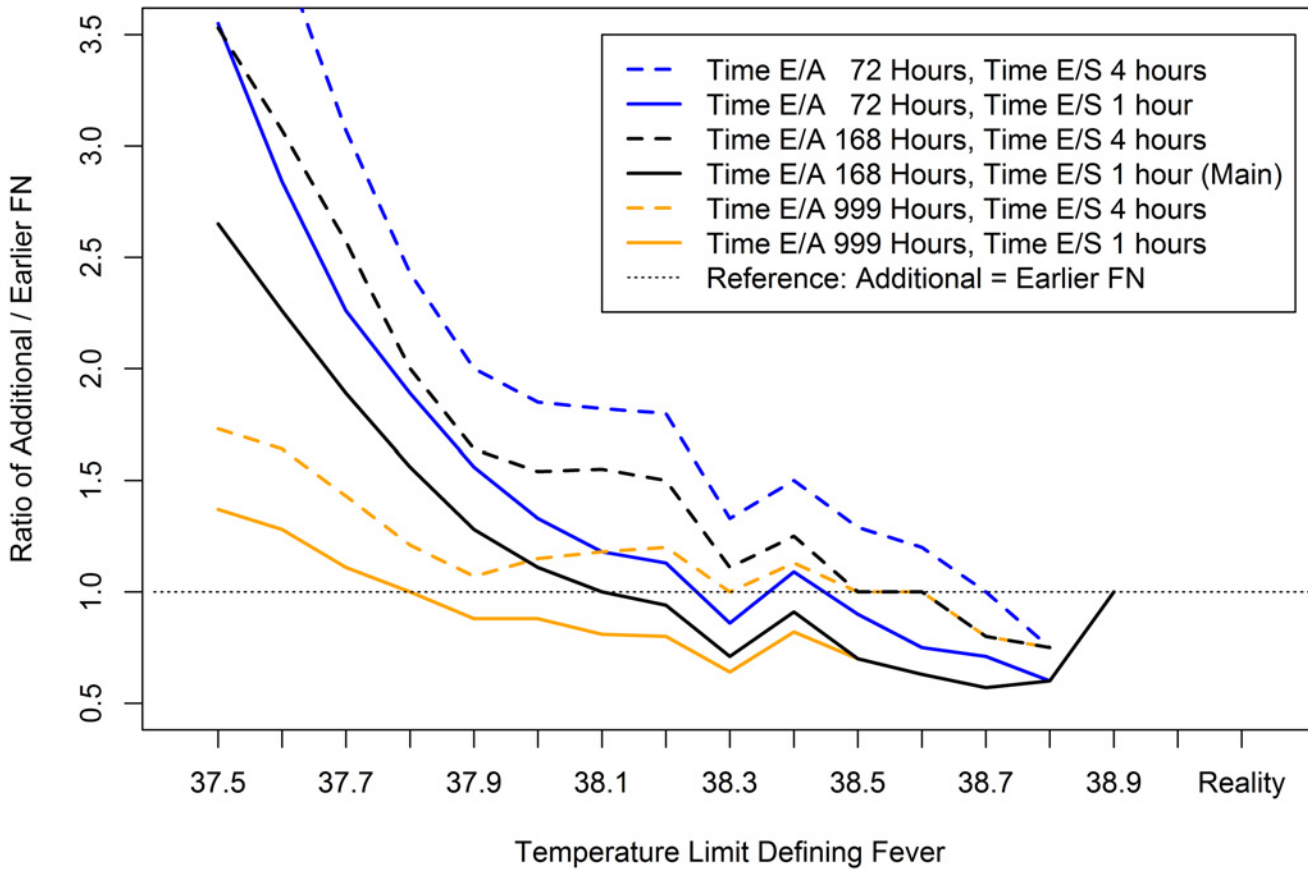
doi:10.1371/journal.pone.0117528.g003

## Discussion

The results of this study demonstrate the efficacy of a high versus low TLDF by significantly reducing the number of FN diagnoses, emergency calls, and CBCs performed for fever. Specifically, virtually lowering the TDLF from 39.0°C to 38.4°C led to a clinically relevant increase of FN diagnoses exceeding 15%. In reality, spontaneous defervescence without specific therapy and without AE was observed in most of these additional FN virtually diagnosed at lower TLDFs. Lowering  $Limit_{Low}$  to around 38.0°C [2, 3] a steady increase of emergency calls, emergency CBCs, and FN diagnoses was observed. This increase became steeper when  $Limit_{Low}$  was lowered further.

Reducing the number of FN diagnoses is an extended version of risk-adapted treatment restriction in diagnosed FN [7, 15, 19–21]. Less FN diagnoses imply less emergency hospitalizations, less empirical therapies with intravenous antibiotics, less costs, and supposedly a better quality of life for patients [9–11, 22, 23].

This study was not designed to assess the safety of a high TLDF, but safety was indirectly, and only roughly, estimated in three ways. First, FN episodes diagnosed in reality below  $Limit_{Standard}$  were recorded. Their number, a quarter of all FN, was non-negligible. These episodes reflect that the treating physician was free to diagnose FN at temperatures below  $Limit_{Standard}$  if clinically indicated, as suggested by current guidelines [2]. In nearly half of these FN episodes diagnosed below  $Limit_{Standard}$  an AE was reported. This predefined priority of clinical impression over the TLDF clearly increases the safety of the high  $Limit_{Standard}$  used. Second, the difference in FN diagnosis time applying  $Limit_{Low}$  versus  $Limit_{Standard}$ ,  $Time_{Earlier}$ , was calculated as



**Figure 4. Ratio of additional/earlier FN diagnoses according to TLDF and definition of earlier FN diagnosis.** Time E/A, time limit differentiating earlier versus additional FN. Time E/S, time limit differentiating earlier versus simultaneous FN.

doi:10.1371/journal.pone.0117528.g004

**Table 3. Clinical Course of FN Episodes Diagnosed in Reality, and Virtually at Different Temperature Limits Defining Fever.**

FN episodes	FN diagnosed	FN virtually diagnosed using limit <sub>Standard</sub> or limit <sub>Low</sub>				
	in reality	39.0°C	38.5°C	38.4°C	38.0°C	37.5°C
Total number of episodes <sup>a</sup>	43 (100%)	34 (100%)	49 (100%)	53 (100%)	65 (100%)	98 (100%)
<i>Episodes with adverse event</i>	19 (44%)	14 (41%)	19 (39%)	19 (36%)	20 (31%)	21 (21%)
Diagnosis of FN, intravenous antibiotics	43 (100%)	32 (94%)	40 (82%)	41 (77%)	43 (66%)	43 (44%)
<i>With adverse event</i>	19 (44%)	14 (41%)	18 (37%)	18 (34%)	19 (29%)	19 (19%)
<i>Without adverse event</i>	24 (56%)	18 (53%)	22 (45%)	23 (43%)	24 (37%)	24 (24%)
No diagnosis of FN, oral antibiotics	0	2 (6%)	3 (6%)	3 (6%)	3 (5%)	4 (4%)
<i>With adverse event</i>	0	0	1 (2%)	1 (2%)	1 (2%)	2 (2%)
<i>Without adverse event</i>	0	2 (6%)	2 (4%)	2 (4%)	2 (3%)	2 (2%)
No diagnosis of FN, no antibiotics	0	0	6 (12%)	9 (17%)	19 (29%)	51 (52%)
<i>With adverse event</i>	0	0	0	0	0	0
<i>Without adverse event</i>	0	0	6 (12%)	9 (17%)	19 (29%)	51 (52%)

FN, fever in neutropenia. <sup>a</sup>Full dataset.

doi:10.1371/journal.pone.0117528.t003

a potential surrogate marker of safety. Earlier diagnosis implies earlier start of empirical antibiotic therapy, which in turn may decrease morbidity and mortality in patients with bacterial infection [12].  $\text{Time}_{\text{Earlier}}$  was non-negligible for many FN episodes in a large range of TLDFs (Fig. 3). Correspondingly, the number of earlier FN was as well non-negligible. It was notably higher than the number of additional FN for TLDFs  $\geq 38.2^\circ\text{C}$ . Sensitivity analyses showed that both these numbers and thus their ratio heavily depended on the time limits differentiating earlier versus simultaneous FN, and earlier versus additional FN (Table 2, Fig. 4). Third, AE were compared between earlier and simultaneous FN episodes applying different TLDFs. No significant differences were found for AE in general, for bacteremia, and for SMC, but these comparisons were clearly underpowered. Taking these three findings together, a TLDF of  $39.0^\circ\text{C}$  as used in Bern might prove unsafe in larger studies. However, the fact that the treating physician was free to diagnose FN at lower temperatures if clinically indicated, lessens this problem: In a quarter of FN episodes, the diagnosis was made without—or probably before— $\text{Limit}_{\text{Standard}}$  was reached for clinical reasons. The fact that relevant AE were detected in nearly half (5 of 11) of these episodes underlines the importance that TLDFs, be they low or high, must not be used as absolute limits neglecting other clinical findings.

To our knowledge this is the first prospective, though purely observational, study of the effect of lowering the TLDF on the rate of FN in pediatric or adult oncology. Its results clearly contradict the counterintuitive finding of no association between TLDF and FN rate in the only retrospective study in pediatric oncology [6]. Methodological weaknesses seem to have led to false negative findings there.

The findings of this study are based on large numbers of temperature measurements and CBCs prospectively recorded. This study relied on the high TLDF of  $39.0^\circ\text{C}$  used in Bern. A reverse design, i.e., virtually assessing the impact of higher TLDFs in centers using low or medium TLDFs, is made impossible by the routine application of antipyretics after FN diagnosis. This implied a single-center study design, with its potential inherent limitations on generalizability of results. In silicon simulation allowed for a non-interventional study. Together with a dedicated PI and research nurse, both known to all patients and parents from clinical routine, these aspects have led to the near-perfect accrual rate which sharply contrasts recent reports on supportive care studies in pediatric oncology [24]. In the outpatient setting, the study relied on reporting of temperature measurements by parents. Incomplete reporting may have led to underestimated rates of both additional and delayed FN diagnosis applying  $\text{Limit}_{\text{Low}}$ . This might be prevented by using temperature measurement devices that automatically store time-stamped results.

In conclusion, this study showed that a high TLDF of  $39.0^\circ\text{C}$  is efficacious via reducing FN diagnoses. Lowering the TLDF to  $38.4^\circ\text{C}$ , and further to  $38.0^\circ\text{C}$  [2, 3] led to a relevant number of additional FN diagnoses, implying overtreatment in the majority of them because spontaneous defervescence was observed in reality. However, it would as well have led to earlier diagnosis, and thus earlier start of therapy, in the majority of episodes. The question if a high TLDF is safe remains open. Before clinical application of this high TLDF in other centers, however, the question of safety must be reliably answered. Even a slight decrease in safety, with its implications on morbidity and mortality, would need to be cautiously weighed against a relevant decrease in hospitalizations and antimicrobial therapy. Based on the results of this study, a large randomized controlled multicenter trial adequately powered to answer this safety question is currently under development.

## Acknowledgments

We thank all patients and parents for study participation; and Eveline Stutz-Grunder, MD, for critically commenting on an earlier version of the manuscript.

## Author Contributions

Conceived and designed the experiments: RAA OT PA NA KL. Performed the experiments: RAA NA. Analyzed the data: RAA. Wrote the paper: RAA OT PA NA KL. Recruited patients for study participation: RAA NA. Treated patients clinically: RAA OT KL.

## References

1. Koh AY, Pizzo PA (2011) Infectious complications in pediatric cancer patients. In: Pizzo PA, Poplack DG (eds): Principles and practice of pediatric oncology, 6th edn. Philadelphia: Lippincott Williams & Wilkins. pp. 1190–1242.
2. Freifeld AG, Bow EJ, Sepkowitz KA, Boeckh MJ, Ito JI, et al. (2011) Clinical practice guideline for the use of antimicrobial agents in neutropenic patients with cancer: 2010 update by the Infectious Diseases Society of America. *Clin Infect Dis* 52: e56–93. doi: [10.1093/cid/cir073](https://doi.org/10.1093/cid/cir073) PMID: [21258094](https://pubmed.ncbi.nlm.nih.gov/21258094/)
3. Gibson F, Chisholm J, Blandford E, Donachie P, Hartley J, et al. (2013) Developing a national 'low risk' febrile neutropenia framework for use in children and young people's cancer care. *Support Care Cancer* 21: 1241–1251. doi: [10.1007/s00520-012-1653-y](https://doi.org/10.1007/s00520-012-1653-y) PMID: [23262805](https://pubmed.ncbi.nlm.nih.gov/23262805/)
4. Phillips B, Selwood K, Lane SM, Skinner R, Gibson F, et al. (2007) Variation in policies for the management of febrile neutropenia in United Kingdom Children's Cancer Study Group centers. *Arch Dis Child* 92: 495–498. doi: [10.1136/adc.2006.102699](https://doi.org/10.1136/adc.2006.102699) PMID: [17284481](https://pubmed.ncbi.nlm.nih.gov/17284481/)
5. Ammann RA, Tissing WJ, Phillips B (2012) Rationalising the approach to children with fever in neutropenia. *Curr Opin Infect Dis* 25: 258–265. doi: [10.1097/QCO.0b013e328351d199](https://doi.org/10.1097/QCO.0b013e328351d199) PMID: [22395759](https://pubmed.ncbi.nlm.nih.gov/22395759/)
6. Binz P, Bodmer N, Leibundgut K, Teuffel O, Niggli FK, et al. (2013) Different fever definitions and the rate of fever and neutropenia diagnosed in children with cancer: A retrospective two-center cohort study. *Pediatr Blood Cancer* 60: 799–805. doi: [10.1002/psc.24380](https://doi.org/10.1002/psc.24380) PMID: [23193083](https://pubmed.ncbi.nlm.nih.gov/23193083/)
7. Lehrnbecher T, Phillips R, Alexander S, Alvaro F, Carlesse F, et al. (2012) Guideline for the management of fever and neutropenia in children with cancer and/or undergoing hematopoietic stem-cell transplantation. *J Clin Oncol* 30: 4427–4438. doi: [10.1200/JCO.2012.42.7161](https://doi.org/10.1200/JCO.2012.42.7161) PMID: [22987086](https://pubmed.ncbi.nlm.nih.gov/22987086/)
8. Bate J, Gibson F, Selwood K, Skinner R, Phillips B, et al. (2013) A reaudit of current febrile neutropenia practice in UK paediatric oncology centres prior to implementation of NICE guidance. *Arch Dis Child* 98: 315–316. doi: [10.1136/archdischild-2013-303810](https://doi.org/10.1136/archdischild-2013-303810) PMID: [23467661](https://pubmed.ncbi.nlm.nih.gov/23467661/)
9. Teuffel O, Amir E, Alibhai SM, Beyene J, Sung L (2011) Cost-effectiveness of outpatient management for febrile neutropenia in children with cancer. *Pediatrics* 127: e279–286. doi: [10.1542/peds.2010-0734](https://doi.org/10.1542/peds.2010-0734) PMID: [21220399](https://pubmed.ncbi.nlm.nih.gov/21220399/)
10. Teuffel O, Sung L (2012) Advances in management of low-risk febrile neutropenia. *Curr Opin Pediatr* 24: 40–25. doi: [10.1097/MOP.0b013e32834c4b12](https://doi.org/10.1097/MOP.0b013e32834c4b12) PMID: [22037219](https://pubmed.ncbi.nlm.nih.gov/22037219/)
11. Cheng S, Teuffel O, Ethier MC, Diorio C, Martino J, et al. (2011) Health-related quality of life anticipated with different management strategies for paediatric febrile neutropenia. *Br J Cancer* 105: 606–611. doi: [10.1038/bjc.2011.213](https://doi.org/10.1038/bjc.2011.213) PMID: [21694729](https://pubmed.ncbi.nlm.nih.gov/21694729/)
12. Fletcher M, Hodgkiss H, Zhang S, Browning R, Hadden C, et al. (2013) Prompt administration of antibiotics is associated with improved outcomes in febrile neutropenia in children with cancer. *Pediatr Blood Cancer* 60: 1299–1306. doi: [10.1002/psc.24485](https://doi.org/10.1002/psc.24485) PMID: [23417978](https://pubmed.ncbi.nlm.nih.gov/23417978/)
13. Nimah MM, Bshesh K, Callahan JD, Jacobs BR (2006) Infrared tympanic thermometry in comparison with other temperature measurement techniques in febrile children. *Pediatr Crit Care Med* 7: 48–55. doi: [10.1097/01.PCC.0000185476.35550.B2](https://doi.org/10.1097/01.PCC.0000185476.35550.B2) PMID: [16395075](https://pubmed.ncbi.nlm.nih.gov/16395075/)
14. Kaz Europe SA (2011) Braun Thermoscan (IRT 4520 / IRT 4020 MNLA) product description. P/N U.0035. Lausanne, Switzerland. pp 3–12.
15. Ammann RA, Bodmer N, Hirt A, Niggli FK, Nadal D, et al. (2010) Predicting adverse events in children with fever and chemotherapy-induced neutropenia: the prospective multicenter SPOG 2003 FN study. *J Clin Oncol* 28: 2008–2014. doi: [10.1200/JCO.2009.25.8988](https://doi.org/10.1200/JCO.2009.25.8988) PMID: [20231680](https://pubmed.ncbi.nlm.nih.gov/20231680/)
16. Altman DG (1991) Practical statistics for medical research. London: Chapman & Hall, 611 p.
17. Ichikawa M, Suzuki D, Ohshima J, Cho Y, Kaneda M, et al. (2011) Piperacillin/tazobactam versus cefazopran for the empirical treatment of pediatric cancer patients with febrile neutropenia. *Pediatr Blood Cancer* 57: 1159–1162. doi: [10.1002/psc.23106](https://doi.org/10.1002/psc.23106) PMID: [21438131](https://pubmed.ncbi.nlm.nih.gov/21438131/)
18. Schlapbach LJ, Aebi C, Otth M, Ridolfi Lüthy A, Leibundgut K, et al. (2007) Serum levels of mannose-binding lectin and the risk of fever in neutropenia pediatric cancer patients. *Pediatr Blood Cancer* 49: 11–16. doi: [10.1002/psc.21097](https://doi.org/10.1002/psc.21097) PMID: [17143875](https://pubmed.ncbi.nlm.nih.gov/17143875/)
19. Klaassen RJ, Goodman TR, Pham B, Doyle JJ (2000) "Low-risk" prediction rule for pediatric oncology patients presenting with fever and neutropenia. *J Clin Oncol* 18: 1012–1019. PMID: [10694551](https://pubmed.ncbi.nlm.nih.gov/10694551/)

20. Oude Nijhuis C, Kamps WA, Daenen SM, Gietema JA, van der Graaf WT, et al. (2005) Feasibility of withholding antibiotics in selected febrile neutropenic cancer patients. *J Clin Oncol* 23: 7437–7444. doi: [10.1200/JCO.2004.00.5264](https://doi.org/10.1200/JCO.2004.00.5264) PMID: [16234511](https://pubmed.ncbi.nlm.nih.gov/16234511/)
21. Phillips RS, Lehrnbecher T, Alexander S, Sung L (2012) Updated systematic review and meta-analysis of the performance of risk prediction rules in children and young people with febrile neutropenia. *PLoS One* 7: e38300. doi: [10.1371/journal.pone.0038300](https://doi.org/10.1371/journal.pone.0038300) PMID: [22693615](https://pubmed.ncbi.nlm.nih.gov/22693615/)
22. Sung L, Feldman BM, Schwaborn G, Paczesny D, Cochrane A, et al. (2004) Inpatient versus outpatient management of low-risk pediatric febrile neutropenia: measuring parents' and healthcare professionals' preferences. *J Clin Oncol* 22: 3922–3929. doi: [10.1200/JCO.2004.01.077](https://doi.org/10.1200/JCO.2004.01.077) PMID: [15459214](https://pubmed.ncbi.nlm.nih.gov/15459214/)
23. Manji A, Beyene J, Dupuis LL, Phillips R, Lehrnbecher T, et al. (2012) Outpatient and oral antibiotic management of low-risk febrile neutropenia are effective in children—a systematic review of prospective trials. *Support Care Cancer* 20: 1135–1145. doi: [10.1007/s00520-012-1425-8](https://doi.org/10.1007/s00520-012-1425-8) PMID: [22402749](https://pubmed.ncbi.nlm.nih.gov/22402749/)
24. Schoot RA, van Ommen CH, Caron HN, Tissing WJ, van de Wetering MD (2012) Accrual in supportive care trials in pediatric oncology, a challenge! *Support Care Cancer* 20: 3149–3153. doi: [10.1007/s00520-012-1447-2](https://doi.org/10.1007/s00520-012-1447-2) PMID: [22476398](https://pubmed.ncbi.nlm.nih.gov/22476398/)