

1  
2  
3  
4  
5  
6  
7  
8  
9  
10  
11  
12  
13  
14  
15  
16  
17  
18  
19  
20  
21

**Population mixing and the risk of childhood leukaemia in Switzerland:**

**A census-based cohort study**

Judith E. Lupatsch<sup>1</sup>, Claudia E. Kuehni<sup>1</sup>, Felix Niggli<sup>2</sup>, Roland A. Ammann<sup>3</sup>, Matthias Egger<sup>1,4</sup>, Ben D. Spycher<sup>1</sup> for the Swiss Paediatric Oncology Group and the Swiss National Cohort Study Group

1 Institute of Social and Preventive Medicine, University of Bern, Finkenhubelweg 11, 3012 Bern, Switzerland

2 University Children’s Hospital Zurich, Steinwiesstrasse 75, 8032 Zurich, Switzerland

3 Department of Paediatrics, Freiburgstrasse 4, University of Bern, 3010, Bern, Switzerland

4 Centre for Infectious Disease Epidemiology and Research, University of Cape Town, Rondebosch, Cape Town, 7700, South Africa

**Corresponding author**

Ben D. Spycher

Institute of Social and Preventive Medicine (ISPM), University of Bern, Finkenhubelweg 11, CH-3012 Bern, Switzerland

Email: [ben.spycher@ispm.unibe.ch](mailto:ben.spycher@ispm.unibe.ch)

Phone: +41 31 631 56 97

Fax: +41 31 631 35 20

1 **Abstract**

2 **Background:** Childhood leukaemia (CL) may have an infectious cause and population mixing may  
3 therefore increase the risk of CL. We aimed to determine whether CL was associated with  
4 population mixing in Switzerland.

5 **Methods:** We followed children aged <16 years in the Swiss National Cohort 1990-2008 and linked  
6 CL cases from the Swiss Childhood Cancer Registry to the cohort. We calculated adjusted hazard  
7 ratios (HRs) for all CL, CL at age <5 years and acute lymphoblastic leukaemia (ALL) for three  
8 measures of population mixing (population growth, in-migration and diversity of origin), stratified  
9 by degree of urbanisation. Measures of population mixing were calculated for all municipalities for  
10 the 5-year period preceding the 1990 and 2000 censuses.

11 **Results:** Analyses were based on 2,128,012 children of whom 536 developed CL. HRs comparing  
12 highest with lowest quintile of population growth were 1.11 (95%Confidence Interval (CI): 0.65-  
13 1.89) in rural and 0.59 (95%CI: 0.43-0.81) in urban municipalities (interaction:  $p=0.271$ ). Results  
14 were similar for ALL and for CL at age <5 years. For level of in-migration there was evidence of a  
15 negative association with ALL. HRs comparing highest with lowest quintile were 0.60 (95%CI: 0.41-  
16 0.87) in urban and 0.61 (95%CI: 0.30-1.21) in rural settings. There was little evidence of an  
17 association with diversity of origin.

18 **Conclusion:** This nationwide cohort study of the association between CL and population growth, in-  
19 migration and diversity of origin provides little support for the population mixing hypothesis.

20  
21  
22 **Keywords:** Population Mixing, Leukaemia, Children, Cohort Study, Switzerland

## Introduction

1  
2 The causes of childhood leukaemia (CL) are largely unknown. Only a minority of cases can be  
3 explained by established causes such as ionizing radiation or genetic syndromes [1, 2]. Population  
4 mixing was proposed by Kinlen in 1988 as an explanation for excesses of childhood leukaemia  
5 observed near the nuclear reprocessing plants at Dounreay and Sellafield [3]. Attempts to explain  
6 these excesses by ionizing radiation originating from the plants had failed [4]. Kinlen suggested that,  
7 because these areas were geographically isolated, the influx of workers might have led to local  
8 epidemics of a yet to be identified, presumably common and subclinical infection causing leukaemia  
9 in some of the children.

10 Since then, a number of studies have investigated leukaemia incidence or mortality in children  
11 following historic events of extreme population mixing, such as war time evacuation or large  
12 construction sites [5-9]. Other studies used census data to identify areas of increased population  
13 mixing. Common measures of population mixing include population growth [10-13], level of in-  
14 migration [14-16], or diversity of origin of migrants [17, 18].

15 A recent systematic review and meta-analysis of studies in which population mixing was measured  
16 as population growth showed a positive association between childhood leukaemia incidence and  
17 population mixing in rural but not urban areas [19]. No study has compared measures of population  
18 growth with other measures of population mixing in the same setting. Furthermore, most previous  
19 studies could not adjust analyses for potential confounders like ionizing radiation, socio-economic  
20 status, or traffic related air pollution. Apart from one case-control study [17], all previous studies  
21 were ecological.

22 Using a nationwide cohort design, we investigated whether the incidence of childhood leukaemia  
23 was elevated in Swiss municipalities experiencing high levels of population mixing. Based on the  
24 existing evidence [19], we hypothesized that a positive association would be found in rural but not  
25 in urban areas. We used population growth, in-migration, and diversity of origin of migrants as  
26 measures of population mixing and adjusted for several potential confounders.

27

1  
2  
3  
4  
5  
6  
7  
8  
9  
10  
11  
12  
13  
14  
15  
16  
17  
18  
19  
20  
21  
22  
23  
24  
25  
26  
27  
28  
29  
30

## Methods

### Population

We included all children aged <16 years registered in the national censuses 1990 or 2000. Participation in these censuses was compulsory and coverage for 2000 was estimated to be 98.6% [20]. Data on these children were obtained from the Swiss National Cohort (SNC) [21], a longitudinal research platform that links records from the national censuses 1990 and 2000 with migration and mortality records. This allowed calculating individual follow-up time (time from census to emigration or death) between 1990 and 2008 for all individuals registered in the censuses.

Incident leukaemia cases were identified through probabilistic record linkage of the SNC with the Swiss Childhood Cancer Registry (SCCR), based on sex, nationality, date of birth, date of birth of parents, residential geo-codes at census and municipality of residence at census and at birth. All leukaemia cases diagnosed in Switzerland at age <16 years between the first census (4<sup>th</sup> December 1990) and 31<sup>st</sup> December 2008 that were born before and diagnosed after a census (1990 or 2000) were eligible. The SCCR [22, 23] is a population-based registry including all children and adolescents diagnosed with a tumour classified according to the International Classification of Childhood Cancer, third edition [24] (ICCC-3). Completeness of the SCCR was above 91% throughout the study period, with coverage increasing to 96% in 2008 [25]. Addresses were geocoded using the database of geo-referenced buildings maintained by Swiss Post (GeoPost) or manually using the geoportal of the Swiss Federal Office of Topography ([www.geo.admin.ch](http://www.geo.admin.ch)).

### Outcomes

Outcomes were any leukaemia (ICCC-3 diagnostic group 1) and acute lymphoblastic leukaemia (ALL, ICC-3 diagnostic group 1a) in children below 16 years of age; and any leukaemia in children below 5 years of age.

### Municipalities

Population mixing was measured at the level of municipalities, the smallest administrative area in Switzerland. We used a classification from the Federal Statistical Office [26] to distinguish urban and rural municipalities. The classification has four categories, urban (main urban centres), semi-urban (urban agglomeration around centres) and isolated towns (towns without surrounding agglomeration) and rural. For the analyses, municipalities of the first three categories were

1 designated as urban. We merged neighbouring municipalities that underwent territorial changes  
2 (e.g. merges or exchanges of territory) to ensure consistent area boundaries between censuses.

### 3 **Measures of Population Mixing**

4 We used population growth, level of in-migration, and diversity of origin of migrants as measures of  
5 population mixing. All measures were calculated for each municipality and each census year (1990,  
6 2000) based on population movements in the 5-year period preceding each census.

7 *Population growth* (PG) was calculated as the increase in population during the 5 year period as a  
8 proportion of the population 5 years before the census. Calculations were based on the annual  
9 population statistics at the municipality level compiled by the Swiss Federal Statistical Office. *Level*  
10 *of in-migration* (IM) was calculated as the proportion of the population at census that lived in a  
11 different municipality or abroad 5 years preceding the census based on information from the census  
12 questionnaire. *Diversity of origin* was measured using Shannon's Index ( $H$ ) [27]:

$$13 \quad H_i = - \sum_{j=1}^M \{p_{ij} \ln p_{ij}\},$$

14 where  $M$  represents the total number of areas of origin and  $p_{ij}$  the proportion of population of  
15 municipality  $i$  at time of census reporting to have lived in area of origin  $j$  5 years preceding census.  
16 Areas of origin were assessed at the district level, an administrative area typically consisting of  
17 about 15 municipalities. In-migrants from abroad were designated a single area of origin.

### 18 **Potential confounding**

19 We considered factors that are potentially associated with location of residence and the risk of  
20 childhood leukaemia as potential confounders (supplementary Fig. S1). These included  
21 environmental exposures: traffic related air pollution (distance from place of residence to nearest  
22 highway in meters: <100, 100-<250, 250-<500, ≥500), exposure to ionizing background radiation  
23 (total external dose rates from cosmic and terrestrial sources at place of residence in nSv/h: <100,  
24 100-<150, 150-<200, ≥200 [28]), exposure to electromagnetic fields (field strength from broadcast  
25 transmitters at place of residence [29] in V/m: <0.05, 0.05-<0.2, ≥0.2, distance to nearest high  
26 voltage powerline in meters: <100, 100-<250, 250-<500, ≥500); as well as household level  
27 variables: level of education of head of household (compulsory, upper secondary, tertiary), rent of  
28 accommodation in Swiss francs (quintiles) and crowding (number of persons per room in quintiles);  
29 an area-based measure of socio-economic status (SES): the Swiss neighbourhood index of  
30 socioeconomic position (Swiss-SEP) [Swiss-SEP, 30](quintiles).

## 1 **Statistical Analysis**

2 We used Cox proportional hazards regression to compare incidence of childhood leukaemia across  
3 quintiles of population mixing using the lowest quintile as reference category. Age was used as  
4 underlying time scale and follow-up time began at date of the first census the child was recorded in  
5 (4<sup>th</sup> December 1990 or 5<sup>th</sup> December 2000) and ended at the date of diagnosis, death, emigration,  
6 16<sup>th</sup> birthday, or administrative censoring (31<sup>st</sup> December 2008), whichever occurred first.  
7 Exposure to population mixing was assessed at time of first census, and was updated at second  
8 census for children recorded in both censuses. Children linked to a non-eligible SCCR patient record  
9 (e.g. diagnosed with a cancer other than leukaemia or diagnosed before entering follow-up) from  
10 the SCCR were no longer considered at risk after diagnosis.

11 We fitted separate models for each exposure measure (population growth, level of in-migration,  
12 diversity of origin) with and without adjustment for listed potential confounders and fitted models  
13 stratified by urban and rural municipalities. We used likelihood ratio (LR) to test for the presence of  
14 an association between outcomes and exposure measures and for interaction between exposure  
15 measures and level of urbanisation. In further analyses, we estimated a linear dose response by  
16 including exposure measures as continuous variables. We fitted all models using STATA version  
17 12.1.

## 18 **Bias modelling and sensitivity analyses**

19 The measure  $H$  is known to be a negatively biased estimator of Shannon's entropy in small samples,  
20 i.e. in small municipalities. In all models using diversity of origin as measure of population mixing,  
21 we therefore controlled for population size of the respective municipality. A number of alternative  
22 estimators have been proposed to account for this bias [31-33]. In a Monte Carlo experiment based  
23 on our data we compared the extent of bias and variance of different estimators. As sensitivity  
24 analyses, we repeated our main analyses excluding the municipalities with <100 in-migrants.

25

1

## Results

### 2 **Population**

3 Of the 642 eligible incident cases, 539 (84%) could be linked to an SNC record, 3 were diagnosed  
4 after recorded emigration, leaving 536 cases for the time to event analysis (*Fig. 1*). The proportion  
5 of cases with ALL was somewhat higher among those included than among those not included into  
6 the analyses (supplementary *table S1*). The SNC included a total of 2,129,261 children aged <16  
7 years at time of census. Of these, 1,249 children were diagnosed with a cancer before entry into the  
8 cohort, leaving 2,128,012 children included in time to event analysis (*Fig. 1*). Median follow-up time  
9 was 8.1 years, children had a median age of 6.6 years at entry into the cohort and 8.1 years at  
10 diagnosis. *Table 1* shows characteristics of included childhood leukaemia cases, number of children  
11 and person-years at risk.

### 12 **Municipalities**

13 Our analyses included 2,584 municipalities of which 920 (36%) were urban and 1,664 (64 %) were  
14 rural (*Table 2*). In 1990 median population size of these municipalities was 874 (range 22 to  
15 345,795), median population density was 121 inhabitants per km<sup>2</sup> of productive land area  
16 (excluding water bodies and areas with no vegetation or only unproductive vegetation), and median  
17 population growth between 1985-90 was 6.4% (range -28% to 124%). Measures of population  
18 mixing tended to be higher in urban areas than in rural areas. They were similar for the periods  
19 1985-90 and 1995-2000, except for population growth which tended to be higher in 1985-90 (*Table*  
20 *2*). *Fig. 2* shows choropleth maps of Switzerland mapping the three measures of population mixing  
21 (population growth, level of in-migration, diversity of origin) and the level of urbanisation for all  
22 municipalities.

### 23 **Association between childhood leukaemia and measures of population mixing**

24 *Table 3* shows the results from Cox regressions for population growth. For any leukaemia diagnosed  
25 before 16 years of age, when including all municipalities, we found evidence for a negative  
26 association between leukaemia incidence and population growth (*p* value from LR test: unadjusted  
27 model 0.094, fully adjusted model 0.008). The HR comparing the highest to the lowest quintile of  
28 population growth (which only contained municipalities with negative growth) was 0.78 (95%  
29 Confidence Interval (CI): 0.60-1.00) and 0.68 (0.52-0.88) in the crude and adjusted model  
30 respectively. The negative association was slightly stronger in urban municipalities - particularly  
31 when adjusting for confounding (*p* LR: 0.002, HR comparing the highest to the lowest quintile 0.59,

1 95%CI 0.43-0.81). We found no evidence of an association in rural municipalities and HR were close  
2 to 1 for all quintiles. However, the interaction test could not confirm a difference between urban and  
3 rural municipalities regarding the association between leukaemia risk and population growth ( $p$  LR:  
4 0.271). Findings were broadly similar for ALL and for leukaemia in children aged <5 years. HRs for  
5 leukaemia diagnosed before 5 years of age tended to be greater than 1 for children in rural  
6 municipalities with high population, but confidence intervals were wide and LR tests showed no  
7 evidence of an association ( $p$  LR: 0.649) or of an interaction between rural and urban municipalities  
8 ( $p$  LR: 0.577).

9 There was evidence of a negative dose response relationship for population growth in the adjusted  
10 model for leukaemia diagnosed <16 years of age (HR per 100% increase 0.25, 95% CI 0.07-0.97,  $p$   
11 LR: 0.045; online supplement *table S2*).

12 *Table 4* shows the results from Cox regressions for level of in-migration. For leukaemia and ALL in  
13 children aged <16 years there was weak evidence of a reduced risk with higher levels of in-  
14 migration, particularly in urban areas and in fully adjusted models ( $p$  LR leukaemia: 0.098,  $p$  LR:  
15 ALL 0.062). However there was no evidence that this association differed between urban and rural  
16 municipalities ( $p$  LR: 0.790).

17 *Table 5* shows the results from Cox regressions for diversity of origin. There was little evidence for  
18 any association between diversity of origin and childhood leukaemia except for leukaemia in  
19 children under 5 years ( $p$  LR: 0.047). However confidence intervals included 1 in all analyses and  
20 there was no evidence of interaction by urbanisation.

## 21 **Bias modelling and sensitivity analyses**

22 Considerable bias and variance of the Shannon Index were observed for municipalities with less  
23 than 100 in-coming migrants but none of the alternative measures performed better than  $H$   
24 (*supplementary text S1 and fig. S1*). Estimates for diversity of origin did not change substantially in  
25 sensitivity analysis excluding communities with <100 in-migrants (*supplementary table S3*).

26



1

## Discussion

2 This census-based cohort study in Switzerland found that population mixing, when measured as  
3 population growth, was negatively associated with childhood leukaemia in urban municipalities: a  
4 higher risk of childhood leukaemia was found in the lowest quintile of population growth which  
5 only contains municipalities with negative growth. In rural areas, point estimates were suggestive of  
6 a positive association between leukaemia risk and population growth as we had hypothesised,  
7 particularly for leukaemia occurring before the age of 5. However, statistical evidence for this  
8 association was weak and interaction tests did not confirm a difference between rural and urban  
9 areas. When using level of in-migration as a measure, there was again evidence of a negative  
10 association with leukaemia risk, and no indication of a difference between urban and rural  
11 municipalities. Little evidence of an association was found between childhood leukaemia risks and  
12 the diversity of origin of incoming migrants. Associations were strengthened when adjusted for a  
13 range of potential confounders including socio-economic factors, ionizing background radiation and  
14 proximity to highways and power lines.

15 Several studies have used routine data to investigate associations between childhood leukaemia and  
16 measures of population mixing. Studies looking at *population growth* mostly found a positive  
17 association between growth and incidence of childhood leukaemia for rural areas [3]. A Canadian  
18 study reported a positive association between population growth and leukaemia in rural areas of  
19 Ontario, particularly for ALL in <5 year olds, and a negative association in urban areas [11]. A study  
20 from the United States of America also found an increased risk of ALL in rural areas with high  
21 population growth [10]. Other studies reported an association between leukaemia and population  
22 growth without distinguishing between rural and urban areas [34, 35, 12, 36]. A negative  
23 association between population growth and leukaemia was reported in a study of French  
24 municipalities [13]. Studies looking at *level of incoming migrants* as measure for population mixing  
25 found contradictory results. Some studies did not find an association between in-migration levels  
26 and leukaemia [14, 37], while other studies found positive associations [16, 15, 38, 39]. Studies  
27 looking at *diversity of origin* also found mixed results: some found increased incidence rates with  
28 higher diversity [14, 39] and others negative associations between ALL and diversity [17, 18].

### 29 Limitations and strengths

30 This study shares several limitations with previous studies. Most importantly, there is no agreed  
31 definition or operationalization of population mixing. Though a number of measures have been used  
32 in the past, it remains unclear whether these actually identify areas at increased risk of localised

1 epidemics of infections that may be causing leukaemia [40]. The size of the municipalities in  
2 Switzerland varies greatly and data from larger municipalities may not have had the resolution to  
3 capture population mixing occurring at a smaller scale. The time frame of the exposure (5 years) is  
4 arbitrary and was given by the questionnaire design of the Swiss census. Our study did not account  
5 for population changes occurring before or after this period. Incomplete coverage of the SCCR and  
6 linkage errors are likely to have caused some misclassification of exposures and outcomes. Children  
7 were aged 0-15 years when they entered the cohort. It is possible that the older among these  
8 children were more likely to be immune to a putative leukemogenic infection and this may have  
9 diluted potential effects of population mixing in our study. However, this problem is less likely to  
10 have affected the analysis of the 0-4 year age group.

11 A main strength of our study is that it was based on individual-level data and included virtually the  
12 whole population. It is therefore essentially free of selection and response bias. The individual-level,  
13 time to event data ensured that exposures preceded the outcome and accounted for loss to follow-  
14 up by migration or death. Our study considered a variety of exposure measures, each capturing a  
15 different aspect of population mixing. For instance, for a municipality with a high population  
16 turnover, but where in-migration is roughly in balance with out-migration, population growth will  
17 be small while level of in-migration will be high. We measured population mixing over a 5-year  
18 period prior to two censuses. Compared to other studies that used shorter time frames reflecting  
19 short-term fluctuations [18, 14, 17] our measures are more likely to capture population trends over  
20 several years. We were able to adjust for a number of potentially important confounders. Few  
21 previous studies have considered potential confounding.

## 22 **Interpretation of findings**

23 Our findings of a decreased risk of leukaemia in urban municipalities experiencing population  
24 growth cannot be explained by Kinlen's hypothesis, which predicts a positive association in rural  
25 areas and the lack of an association in urban areas. It is possible that areas with large population  
26 growth differ from regions with low or negative growth regarding one or more risk factors for  
27 leukaemia not fully accounted for in our analyses. One such factor might be air pollution which was  
28 included in our analyses only through proximity to highways. All major city centres of Switzerland  
29 are in the lowest two quintiles of population growth while high population growth areas are mainly  
30 in the surrounding urban agglomeration. Air pollution levels also tends to be higher in city centres.

31 Another factor might be exposure to common childhood infections which is likely to be high in  
32 urban areas with high population growth. Greaves [41] suggested that early exposure to childhood

1 infections may be protective against leukaemia, whereas delayed exposure could result in abnormal  
2 immune responses and, in rare cases, to leukaemia. If children in urban areas with negative  
3 population growth were exposed to common infections at a later age than children in growing  
4 urban areas, Greaves' hypothesis is a possible explanation for the higher risk observed in the former  
5 compared to the latter.

6 Our findings in rural areas also provide little support for the population mixing hypothesis.  
7 Consistent with the hypothesis, leukaemia risks in children under 5 and risk for ALL under 16  
8 tended to be higher in municipalities with high population growth. However tests of interaction did  
9 not suggest that the association between leukaemia and population growth differed between urban  
10 and rural areas. Assuming the population mixing hypothesis is true, our study might have lacked the  
11 statistical power to detect an association in rural areas (sufficient power for urban areas is  
12 demonstrated by the detection of a negative association). Alternatively, the hypothesised leukaemia  
13 causing infection may not have commonly occurred in localised epidemics in Switzerland or such  
14 epidemics were poorly captured by our measures of population mixing. Throughout the period of  
15 investigation the population of Switzerland was steadily growing (mainly through immigration) but  
16 there were no rapid population shifts comparable to those reported in other studies, for example  
17 war time evacuations. Also, residential mobility was not markedly lower in rural areas compared to  
18 urban areas of Switzerland and the remote alpine regions in Switzerland have for a long time been  
19 frequented by large numbers of tourists. Herd immunity to common infections might therefore be  
20 high even in rural areas. Our measures of population mixing would thus fail to reflect any increased  
21 risk of epidemics.

22 To conclude, this nationwide cohort study suggests that population increases in urban areas are  
23 associated with a decreased risk of childhood leukaemia. Overall, the study therefore provides little  
24 support for the population mixing hypothesis proposed by Kinlen.

## **Acknowledgements**

The work of the Swiss Childhood Cancer Registry is supported by the Swiss Paediatric Oncology Group ([www.spog.ch](http://www.spog.ch)), Schweizerische Konferenz der kantonalen Gesundheitsdirektorinnen und –direktoren ([www.gdk-cds.ch](http://www.gdk-cds.ch)), Swiss Cancer Research ([www.krebsforschung.ch](http://www.krebsforschung.ch)), Kinderkrebshilfe Schweiz ([www.kinderkrebshilfe.ch](http://www.kinderkrebshilfe.ch)), Ernst-Göhner Stiftung, Stiftung Domarena and National Institute of Cancer Epidemiology and Registration ([www.nicer.ch](http://www.nicer.ch)).

The members of the Swiss Pediatric Oncology Group Scientific Committee:

R. A. Ammann (Bern), R. Angst (Aarau), M. Ansari (Geneva), M. Beck Popovic (Lausanne), E. Bergstraesser (Zurich), P. Brazzola (Bellinzona), J. Greiner (St. Gallen), M. Grotzer (Zurich), H. Hengartner (St. Gallen), T. Kuehne (Basel), K. Leibundgut (Bern), F. Niggli (Zurich), J. Rischewski (Lucerne), N. von der Weid (Basel)

The members of the Swiss National Cohort Study Group:

M. Egger (Chairman of the Executive Board), A. Spoerri (University of Bern), M. Zwahlen (University of Bern), M. Puhan (Chairman of the Scientific Board), M. Bopp (University of Zurich), D. Fäh (University of Zurich), N. Künzli (University of Basel), F. Paccaud (University of Lausanne), M. Oris (University of Geneva), M. Schwyn (Swiss Federal Statistical Office, Neuchâtel).

## **Compliance with Ethical Standards**

### **Funding**

This study was supported by Swiss Cancer Research (# 3049-08-2012, # 3515-08-2014), the Swiss Federal Office of Public Health (# 08.001616, #10.002946, # 12.0083557) and the Swiss Cancer League (#02224-03-2008). B.D. Spycher was supported by a Swiss National Science Foundation fellowship (PZ00P3\_147987).

### **Conflict of interest**

The authors declare that they have no conflict of interest

### **Ethical approval**

Approval of the study was granted through the general cancer registry permission of the Swiss Childhood Cancer Registry by the ethics committee of the canton of Bern.

## References

1. Wiemels J. Perspectives on the causes of childhood leukemia. *Chem Biol Interact.* 2012;196:59-67.
2. Eden T. Aetiology of childhood leukaemia. *Cancer Treat Rev.* 2010;36:286-97.
3. Kinlen L. Evidence for an infective cause of childhood leukaemia: comparison of a Scottish new town with nuclear reprocessing sites in Britain. *Lancet.* 1988;2:1323-7.
4. Black D. Investigation of the Possible Increased Incidence of Cancer in West Cumbria; Report of the Independent Advisory Group. London, HMSO. 1984.
5. Kinlen LJ, Clarke K, Hudson C. Evidence from population mixing in British New Towns 1946-85 of an infective basis for childhood leukaemia. *Lancet.* 1990;336:577-82.
6. Kinlen L. Childhood leukaemia and ordnance factories in west Cumbria during the Second World War. *Br J Cancer.* 2006;95:102-6.
7. Kinlen LJ, O'Brien F, Clarke K, Balkwill A, Matthews F. Rural population mixing and childhood leukaemia: effects of the North Sea oil industry in Scotland, including the area near Dounreay nuclear site. *BMJ.* 1993;306:743-8.
8. Kinlen LJ, Balkwill A. Infective cause of childhood leukaemia and wartime population mixing in Orkney and Shetland, UK. *Lancet.* 2001;357:858.
9. Boutou O, Guizard AV, Slama R, Pottier D, Spira A. Population mixing and leukaemia in young people around the La Hague nuclear waste reprocessing plant. *Br J Cancer.* 2002;87:740-5.
10. Wartenberg D, Schneider D, Brown S. Childhood leukaemia incidence and the population mixing hypothesis in US SEER data. *Br J Cancer.* 2004;90:1771-6.
11. Koushik A, King WD, McLaughlin JR. An ecologic study of childhood leukemia and population mixing in Ontario, Canada. *Cancer Causes Control.* 2001;12:483-90.
12. Alexander FE, Chan LC, Lam TH, Yuen P, Leung NK, Ha SY et al. Clustering of childhood leukaemia in Hong Kong: association with the childhood peak and common acute lymphoblastic leukaemia and with population mixing. *Br J Cancer.* 1997;75:457-63.
13. Laplanche A, de Vathaire F. Leukaemia mortality in French communes (administrative units) with a large and rapid population increase. *Br J Cancer.* 1994;69:110-3.
14. Stiller CA, Kroll ME, Boyle PJ, Feng Z. Population mixing, socioeconomic status and incidence of childhood acute lymphoblastic leukaemia in England and Wales: analysis by census ward. *Br J Cancer.* 2008;98:1006-11.
15. Dickinson HO, Hammal DM, Bithell JF, Parker L. Population mixing and childhood leukaemia and non-Hodgkin's lymphoma in census wards in England and Wales, 1966-87. *Br J Cancer.* 2002;86:1411-3.
16. Rudant J, Baccaini B, Ripert M, Goubin A, Bellec S, Hemon D et al. Population-mixing at the place of residence at the time of birth and incidence of childhood leukaemia in France. *Eur J Cancer.* 2006;42:927-33.
17. Law GR, Parslow RC, Roman E, United Kingdom Childhood Cancer Study I. Childhood cancer and population mixing. *Am J Epidemiol.* 2003;158:328-36.
18. Parslow RC, Law GR, Feltbower R, Kinsey SE, McKinney PA. Population mixing, childhood leukaemia, CNS tumours and other childhood cancers in Yorkshire. *Eur J Cancer.* 2002;38:2033-40.

19. Kinlen LJ. An examination, with a meta-analysis, of studies of childhood leukaemia in relation to population mixing. *Br J Cancer.* 2012;107:1163-8.
20. Bopp M, Spoerri A, Zwahlen M, Gutzwiller F, Paccaud F, Braun-Fahrlander C et al. Cohort Profile: the Swiss National Cohort--a longitudinal study of 6.8 million people. *Int J Epidemiol.* 2009;38:379-84.
21. Spoerri A, Zwahlen M, Egger M, Bopp M. The Swiss National Cohort: a unique database for national and international researchers. *Int J Public Health.* 2010;55:239-42.
22. Michel G, von der Weid NX, Zwahlen M, Adam M, Rebholz CE, Kuehni CE et al. The Swiss Childhood Cancer Registry: rationale, organisation and results for the years 2001-2005. *Swiss Med Wkly.* 2007;137:502-9.
23. Michel G, von der Weid NX, Zwahlen M, Redmond S, Strippoli MP, Kuehni CE et al. Incidence of childhood cancer in Switzerland: the Swiss Childhood Cancer Registry. *Pediatr Blood Cancer.* 2008;50:46-51.
24. Steliarova-Foucher E, Stiller C, Lacour B, Kaatsch P. International Classification of Childhood Cancer, third edition. *Cancer.* 2005;103:1457-67.
25. Schindler M, Mitter V, Rueegg C, Bergstrasser E, Gumy-Pause F, Michel G et al. Death Certificate Notations in the Swiss Childhood Cancer Registry: Validation of Registration Procedures and Completeness. Abstract presented at ENCR Scientific Meeting and General Assembly, 12-14 Nov, Ispra, Italy. 2014.
26. Schuler M, Dessemontet P, Joye D. Die Raumgliederung der Schweiz. Neuchatel, Switzerland Swiss Federal Statistical Office; 2005.  
doi:<http://www.bfs.admin.ch/bfs/portal/de/index/news/publikationen.html?publicationID=1881>.
27. Shannon CE. A Mathematical Theory of Communication. *At&T Tech J.* 1948;27:379-423.
28. Spycher BD, Lupatsch JE, Zwahlen M, Roosli M, Niggli F, Grotzer MA et al. Background Ionizing Radiation and the Risk of Childhood Cancer: A Census-Based Nationwide Cohort Study. *Environ Health Perspect.* 2015.
29. Hauri DD, Spycher B, Huss A, Zimmermann F, Grotzer M, von der Weid N et al. Exposure to Radio-Frequency Electromagnetic Fields From Broadcast Transmitters and Risk of Childhood Cancer: A Census-based Cohort Study. *Am J Epidemiol.* 2014;179:843-51.
30. Panczak R, Galobardes B, Voorpostel M, Spoerri A, Zwahlen M, Egger M et al. A Swiss neighbourhood index of socioeconomic position: development and association with mortality. *J Epidemiol Community Health.* 2012.
31. Schurmann T. Bias analysis in entropy estimation. *J Phys a-Math Gen.* 2004;37:L295-L301.
32. Grassberger P. Entropy estimates from insufficient samplings. *arXiv:physics/0307138v2.* 2008.
33. Peet RK. The Measurement of Species Diversity. *Annual Review of Ecology and Systematics.* 1974;5:285-307.
34. Clark BR, Ferketich AK, Fisher JL, Ruymann FB, Harris RE, Wilkins JR, 3rd. Evidence of population mixing based on the geographical distribution of childhood leukemia in Ohio. *Pediatr Blood Cancer.* 2007;49:797-802.
35. Adelman AS, Groves FD, O'Rourke K, Sinha D, Hulsey TC, Lawson AB et al. Residential mobility and risk of childhood acute lymphoblastic leukaemia: an ecological study. *Br J Cancer.* 2007;97:140-4.

36. Li CY, Lin RS, Lin CH. Urbanization and childhood leukaemia in Taiwan. *Int J Epidemiol.* 1998;27:587-91.
37. Infante-Rivard C, Fortier I, Olson E. Markers of infection, breast-feeding and childhood acute lymphoblastic leukaemia. *Br J Cancer.* 2000;83:1559-64.
38. Nyari TA, Kajtar P, Bartyik K, Thurzo L, Parker L. Childhood acute lymphoblastic leukaemia in relation to population mixing around the time of birth in South Hungary. *Pediatr Blood Cancer.* 2006;47:944-8.
39. Stiller CA, Boyle PJ. Effect of population mixing and socioeconomic status in England and Wales, 1979-85, on lymphoblastic leukaemia in children. *BMJ.* 1996;313:1297-300.
40. Taylor JC, Law GR, Boyle PJ, Feng Z, Gilthorpe MS, Parslow RC et al. Does population mixing measure infectious exposure in children at the community level? *Eur J Epidemiol.* 2008;23:593-600.
41. Greaves MF. Speculations on the cause of childhood acute lymphoblastic leukemia. *Leukemia.* 1988;2:120-5.

**Tables**

Table 1: Characteristics of childhood leukaemia cases, number of children at risk and person-years of follow-up

	Age group	
	0-4 years	0-16 years
No. of leukaemia cases (ICCC*)	147 (100.0%)	536 (100.0%)
(1a) Acute lymphoblastic leukaemia	130 (88.4%)	420 (78.4%)
(1b) Acute myeloid leukaemia	13 (8.8%)	82 (15.3%)
(1c) Chronic myeloproliferative diseases	0 (0.0%)	9 (1.7%)
(1d) Myelodysplastic syndrome	2 (1.3%)	16 (3.0%)
(1e) Unspecified and other specified leukaemia	2 (1.3%)	6 (1.1%)
No. of leukaemia cases in a rural region	33 (22.4%)	151 (28.1%)
Gender		
Male	86 (58.5%)	319 (59.5%)
Female	61 (41.5%)	217 (40.5%)
Median age at diagnosis in years (IQR**)	3.3 (2.4-4.04)	8.1 (4.7-12.2)
No. of children at risk	794'473	2'128'012
Person-years at risk	1'959'394	16'412'861

\*ICCC, *International Classification of Childhood Cancer*, \*\*IQR= *Interquartile range*



Table 2: Characteristics of municipalities in Switzerland

		Municipalities					
		all		urban		rural	
N		2,584		920	(35.60%)	1,664	(66.40%)
		median	range	median	range	median	range
Population size	1990	874	22 to 345,795	2087	56 to 345,795	560	22 to 9,908
Population density <sup>a</sup>	1990	121	2 to 11,136	374	18 to 11,136	77	18 to 1,399
Population growth <sup>b</sup>	1985-1990	6%	-28 to 124%	75%	-11% to 101%	6%	-28% to 124%
Level of in-migration <sup>c</sup>	1985-1990	24%	0% to 67%	27%	9% to 59%	22%	0% to 67%
Diversity of origin <sup>d</sup>	1985-1990	2.24	0.00 to 3.73	2.32	0.66 to 3.39	2.20	0.00 to 3.73
Population size	2000	974	12 to 333,259	2340	65 to 333,259	607	12 to 10,403
Population density <sup>a</sup>	2000	136	2 to 11,586	443	21 to 11,586	85	2 to 1765
Population growth <sup>b</sup>	1995-2000	26%	-50% to 78%	46%	-39% to 44%	10%	-50% to 78%
Level of in-migration <sup>c</sup>	1995-2000	23%	0% to 75%	26%	5% to 46%	21%	0% to 75%
Diversity of origin <sup>d</sup>	1995-2000	2.17	0.00 to 3.61	2.20	0.37 to 3.52	2.15	0.00 to 3.61

<sup>a</sup> Number of inhabitants per square km of productive land area within municipalities; <sup>b</sup> Percent population increase relative to populations in 1985 and 1995, respectively; <sup>c</sup> Percent in-migrated population relative to populations in 1990 and 2000, respectively; <sup>d</sup> Shannon-Index of in-migrated population

Tabelle 3. Time to event analysis for population growth

Outcome	Population growth (quintiles)	All municipalities		Rural municipalities		Urban municipalities		Test for interaction <sup>a</sup>	
		Crude	Adjusted <sup>b</sup>	Crude	Adjusted <sup>b</sup>	Crude	Adjusted <sup>b</sup>	Crude	Adjusted <sup>b</sup>
		HR (95% CI)	HR (95% CI)	HR (95% CI)	HR (95% CI)	HR (95% CI)	HR (95% CI)		
All leukaemia, <16 y	1	1	1	1	1	1	1	0.603	0.271
	2	0.82 (0.64 - 1.06)	0.78 (0.60 - 1.01)	1.09 (0.63 - 1.90)	1.13 (0.65 - 1.96)	0.77 (0.58 - 1.04)	0.73 (0.54 - 0.98)		
	3	0.71 (0.54 - 0.92)	0.64 (0.49 - 0.84)	0.98 (0.56 - 1.71)	0.94 (0.53 - 1.67)	0.66 (0.48 - 0.89)	0.59 (0.43 - 0.80)		
	4	0.76 (0.58 - 0.98)	0.68 (0.52 - 0.89)	1.07 (0.62 - 1.84)	1.07 (0.62 - 1.87)	0.70 (0.51 - 0.94)	0.60 (0.44 - 0.82)		
	5	0.78 (0.60 - 1.00)	0.68 (0.52 - 0.88)	1.11 (0.66 - 1.87)	1.11 (0.65 - 1.89)	0.71 (0.52 - 0.96)	0.59 (0.43 - 0.81)		
Acute lymphoblastic leukaemia, <16 y	1	1	1	1	1	1	1	0.486	0.262
	2	0.90 (0.67 - 1.20)	0.86 (0.64 - 1.15)	1.34 (0.70 - 2.53)	1.40 (0.74 - 2.67)	0.82 (0.59 - 1.14)	0.78 (0.56 - 1.09)		
	3	0.76 (0.56 - 1.03)	0.70 (0.51 - 0.95)	1.27 (0.67 - 2.42)	1.25 (0.65 - 2.39)	0.67 (0.47 - 0.95)	0.60 (0.42 - 0.86)		
	4	0.83 (0.62 - 1.12)	0.75 (0.56 - 1.02)	1.22 (0.64 - 2.31)	1.25 (0.65 - 2.41)	0.77 (0.55 - 1.08)	0.67 (0.48 - 0.96)		
	5	0.78 (0.58 - 1.05)	0.68 (0.50 - 0.92)	1.17 (0.63 - 2.19)	1.22 (0.64 - 2.30)	0.71 (0.50 - 1.01)	0.58 (0.40 - 0.85)		
All leukaemia, <5 y	1	1	1	1	1	1	1	0.582	0.577
	2	0.82 (0.49 - 1.36)	0.78 (0.46 - 1.30)	1.46 (0.35 - 6.09)	1.54 (0.37 - 6.46)	0.77 (0.44 - 1.34)	0.72 (0.41 - 1.27)		
	3	0.93 (0.57 - 1.53)	0.88 (0.53 - 1.46)	1.85 (0.48 - 7.14)	2.05 (0.53 - 7.97)	0.86 (0.50 - 1.50)	0.77 (0.44 - 1.36)		
	4	0.96 (0.58 - 1.57)	0.90 (0.54 - 1.49)	2.50 (0.69 - 9.08)	2.98 (0.81 - 10.95)	0.80 (0.46 - 1.41)	0.69 (0.39 - 1.24)		
	5	0.93 (0.56 - 1.52)	0.86 (0.51 - 1.43)	1.79 (0.47 - 6.73)	2.16 (0.56 - 8.29)	0.89 (0.51 - 1.56)	0.74 (0.41 - 1.32)		

CI confidence interval; HR hazard ratio

<sup>a</sup> Likelihood ratio test interaction between population growth and urbanity

<sup>b</sup> adjusted for level of education of head of household, flat rent, crowding, the Swiss neighbourhood index of socioeconomic position, distance to highways, ionizing background radiation (dose rates from terrestrial gamma and cosmic radiation), electromagnetic fields from broadcast transmitters, distance to high voltage power lines

Tabelle 4. Time to event analysis for level of in-migration

Outcome	Level of in-migration (quintiles)	All municipalities		Rural municipalities		Urban municipalities		Test for interaction <sup>a</sup>	
		Crude	Adjusted <sup>b</sup>	Crude	Adjusted <sup>b</sup>	Crude	Adjusted <sup>b</sup>	Crude	Adjusted <sup>b</sup>
		HR (95% CI)	HR (95% CI)	HR (95% CI)	HR (95% CI)	HR (95% CI)	HR (95% CI)		
All leukaemia, <16 y	1	1	1	1	1	1	1	0.863	0.790
	2	0.96 (0.74 - 1.24)	0.95 (0.73 - 1.23)	1.11 (0.74 - 1.68)	1.18 (0.76 - 1.81)	0.83 (0.59 - 1.15)	0.80 (0.57 - 1.11)		
	3	0.77 (0.59 - 1.01)	0.76 (0.57 - 1.00)	0.76 (0.44 - 1.31)	0.80 (0.45 - 1.40)	0.69 (0.49 - 0.96)	0.66 (0.47 - 0.93)		
	4	0.93 (0.72 - 1.20)	0.86 (0.66 - 1.13)	0.93 (0.57 - 1.51)	0.97 (0.58 - 1.63)	0.83 (0.60 - 1.15)	0.74 (0.53 - 1.03)		
	5	0.79 (0.60 - 1.03)	0.73 (0.55 - 0.96)	0.75 (0.44 - 1.29)	0.69 (0.38 - 1.24)	0.71 (0.51 - 0.99)	0.65 (0.46 - 0.92)		
Acute lymphoblastic leukaemia, <16 y	1	1	1	1	1	1	1	0.873	0.739
	2	0.83 (0.62 - 1.11)	0.81 (0.60 - 1.09)	0.93 (0.57 - 1.50)	1.01 (0.61 - 1.68)	0.72 (0.49 - 1.04)	0.69 (0.47 - 1.00)		
	3	0.72 (0.53 - 0.98)	0.71 (0.52 - 0.97)	0.82 (0.46 - 1.46)	0.90 (0.49 - 1.66)	0.62 (0.43 - 0.90)	0.59 (0.40 - 0.86)		
	4	0.91 (0.68 - 1.20)	0.83 (0.62 - 1.13)	0.94 (0.55 - 1.60)	1.03 (0.58 - 1.83)	0.80 (0.56 - 1.14)	0.70 (0.48 - 1.01)		
	5	0.73 (0.54 - 0.98)	0.66 (0.48 - 0.91)	0.64 (0.34 - 1.21)	0.61 (0.30 - 1.21)	0.66 (0.46 - 0.95)	0.60 (0.41 - 0.87)		
All leukaemia, <5 y	1	1	1	1	1	1	1	0.681	0.571
	2	1.51 (0.90 - 2.53)	1.50 (0.88 - 2.54)	0.81 (0.31 - 2.13)	0.92 (0.34 - 2.48)	1.84 (0.92 - 3.67)	1.79 (0.89 - 3.58)		
	3	1.17 (0.68 - 2.01)	1.14 (0.65 - 1.99)	0.79 (0.26 - 2.41)	0.93 (0.29 - 2.95)	1.28 (0.63 - 2.61)	1.21 (0.59 - 2.49)		
	4	1.33 (0.78 - 2.25)	1.24 (0.72 - 2.15)	0.87 (0.31 - 2.44)	1.05 (0.35 - 3.12)	1.48 (0.73 - 2.98)	1.33 (0.65 - 2.71)		
	5	1.05 (0.60 - 1.82)	0.98 (0.55 - 1.74)	0.94 (0.34 - 2.64)	1.15 (0.38 - 3.45)	1.08 (0.52 - 2.25)	0.97 (0.46 - 2.04)		

CI confidence interval; HR hazard ratio

<sup>a</sup> Likelihood ratio test interaction between population growth and urbanity

<sup>b</sup> adjusted for level of education of head of household, flat rent, crowding, the Swiss neighbourhood index of socioeconomic position, distance to highways, ionizing background radiation (dose rates from terrestrial gamma and cosmic radiation), electromagnetic fields from broadcast transmitters, distance to high voltage power lines

Tabelle 5. Time to event analysis for diversity of origin

Outcome	Diversity of origin (quintiles)	All municipalities		Rural municipalities		Urban municipalities		Test for interaction <sup>a</sup>	
		Crude	Adjusted <sup>b</sup>	Crude	Adjusted <sup>b</sup>	Crude	Adjusted <sup>b</sup>	Crude	Adjusted <sup>b</sup>
		HR (95% CI)	HR (95% CI)	HR (95% CI)	HR (95% CI)	HR (95% CI)	HR (95% CI)		
All leukaemia, <16 y	1	1	1	1	1	1	1	0.988	0.994
	2	0.94 (0.71 - 1.25)	0.93 (0.70 - 1.24)	0.98 (0.59 - 1.60)	1.01 (0.61 - 1.68)	0.97 (0.69 - 1.37)	0.90 (0.64 - 1.28)		
	3	1.00 (0.76 - 1.32)	0.95 (0.72 - 1.26)	1.02 (0.61 - 1.72)	0.99 (0.58 - 1.70)	1.05 (0.75 - 1.46)	0.93 (0.66 - 1.31)		
	4	1.14 (0.87 - 1.50)	1.13 (0.85 - 1.49)	1.35 (0.80 - 2.25)	1.41 (0.83 - 2.40)	1.15 (0.83 - 1.60)	1.05 (0.75 - 1.46)		
	5	1.18 (0.88 - 1.59)	1.14 (0.85 - 1.55)	1.30 (0.71 - 2.39)	1.35 (0.72 - 2.52)	1.20 (0.85 - 1.69)	1.07 (0.76 - 1.53)		
Acute lymphoblastic leukaemia, <16 y	1	1	1	1	1	1	1	0.901	0.922
	2	1.00 (0.73 - 1.39)	1.00 (0.72 - 1.40)	1.10 (0.63 - 1.93)	1.18 (0.67 - 2.10)	0.99 (0.66 - 1.49)	0.91 (0.61 - 1.38)		
	3	1.06 (0.77 - 1.46)	1.01 (0.73 - 1.40)	1.03 (0.57 - 1.88)	1.03 (0.55 - 1.93)	1.12 (0.76 - 1.64)	0.99 (0.67 - 1.46)		
	4	1.31 (0.96 - 1.77)	1.30 (0.95 - 1.78)	1.30 (0.71 - 2.36)	1.43 (0.77 - 2.66)	1.39 (0.96 - 2.02)	1.25 (0.86 - 1.82)		
	5	1.25 (0.89 - 1.76)	1.22 (0.86 - 1.73)	1.54 (0.78 - 3.01)	1.67 (0.84 - 3.34)	1.23 (0.82 - 1.83)	1.09 (0.73 - 1.63)		
All leukaemia, <5 y	1	1	1	1	1	1	1	0.545	0.547
	2	1.09 (0.64 - 1.86)	1.06 (0.62 - 1.82)	1.94 (0.65 - 5.80)	2.06 (0.68 - 6.25)	0.88 (0.47 - 1.65)	0.79 (0.42 - 1.50)		
	3	0.81 (0.46 - 1.44)	0.77 (0.43 - 1.38)	1.53 (0.47 - 5.05)	1.63 (0.48 - 5.47)	0.66 (0.34 - 1.30)	0.59 (0.30 - 1.16)		
	4	1.43 (0.86 - 2.37)	1.33 (0.79 - 2.24)	1.73 (0.52 - 5.82)	1.89 (0.55 - 6.45)	1.44 (0.82 - 2.53)	1.23 (0.69 - 2.20)		
	5	1.14 (0.65 - 2.02)	1.05 (0.59 - 1.88)	1.27 (0.28 - 5.74)	1.39 (0.30 - 6.50)	1.20 (0.64 - 2.25)	1.04 (0.55 - 1.96)		

CI confidence interval; HR hazard ratio

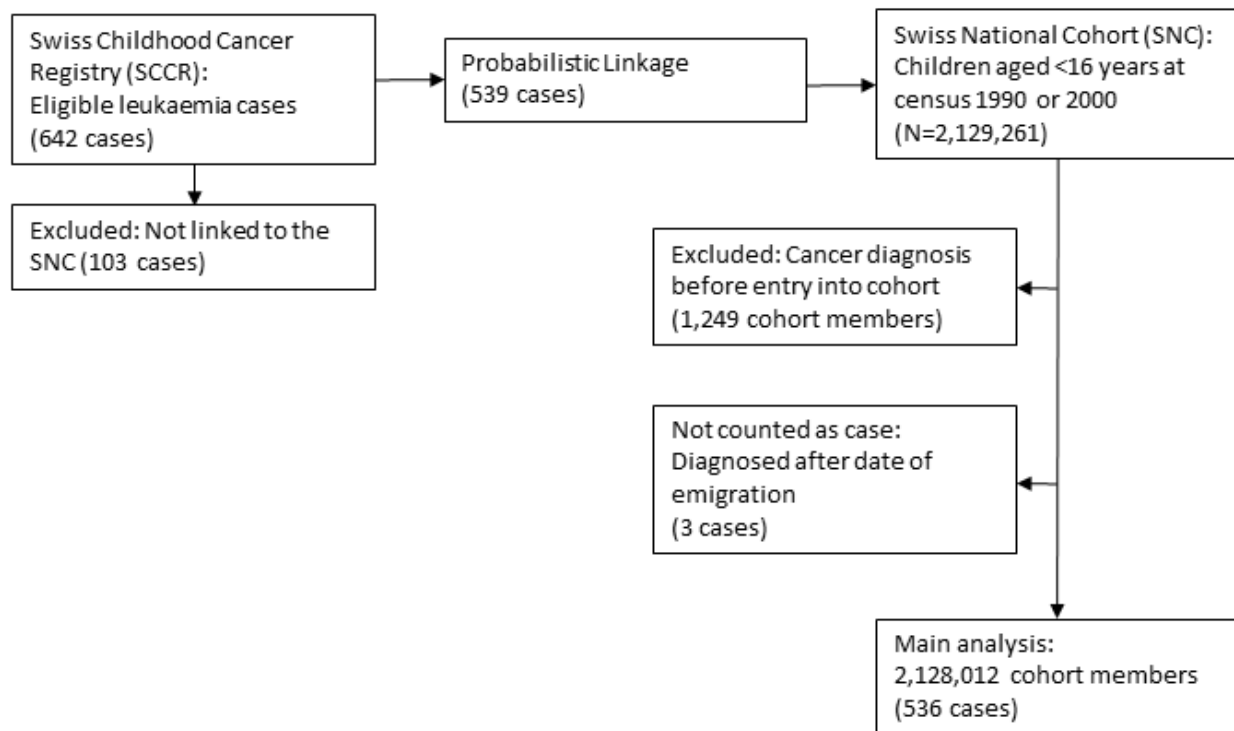
<sup>a</sup> Likelihood ratio test interaction between population growth and urbanity

<sup>b</sup> adjusted for level of education of head of household, flat rent, crowding, the Swiss neighbourhood index of socioeconomic position, distance to highways, ionizing background radiation (dose rates from terrestrial gamma and cosmic radiation), electromagnetic fields from broadcast transmitters, distance to high voltage power lines

## Figures Titles

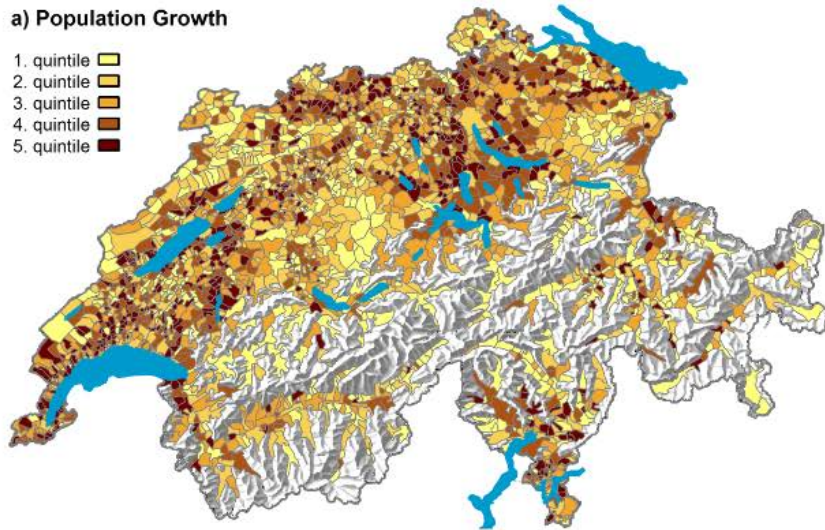
**Fig. 1.** Flow chart of leukaemia cases and cohort members

**Fig. 2.** Population growth, level of in-migration, diversity of origin and level of urbanisation for all Swiss municipalities as of date of census 2000.

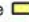






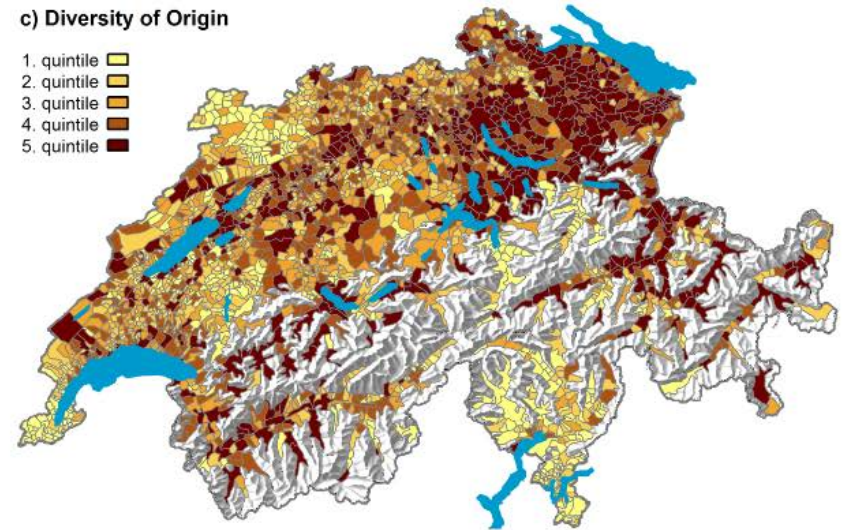
**a) Population Growth**

- 1. quintile 
- 2. quintile 
- 3. quintile 
- 4. quintile 
- 5. quintile 



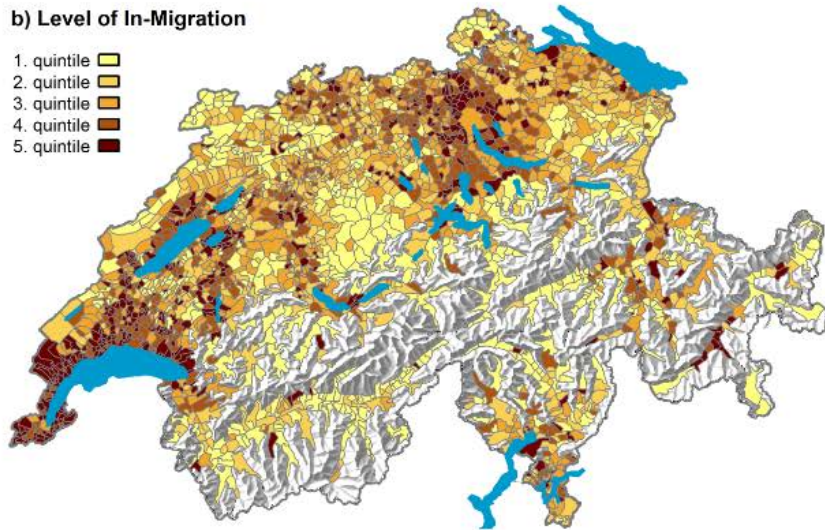
**c) Diversity of Origin**

- 1. quintile 
- 2. quintile 
- 3. quintile 
- 4. quintile 
- 5. quintile 



**b) Level of In-Migration**

- 1. quintile 
- 2. quintile 
- 3. quintile 
- 4. quintile 
- 5. quintile 



**d) Level of Urbanization**

- rural 
- urban 

