

# Relationship between survival and increased radiation dose to subventricular zone in glioblastoma is controversial

Olgun Elicin · Ebrar Inac · Esengul Kocak Uzel ·  
Songul Karacam · Omer Erol Uzel

Received: 25 December 2013 / Accepted: 13 March 2014 / Published online: 26 March 2014  
© Springer Science+Business Media New York 2014

**Abstract** To test the hypothesis on prolonged survival in glioblastoma cases with increased subventricular zone (SVZ) radiation dose. Sixty glioblastoma cases were previously treated with adjuvant radiotherapy and Temozolamide. Ipsilateral, contralateral and bilateral SVZs were contoured and their doses were retrospectively evaluated. Median follow-up, progression free survival (PFS) and overall survival (OS) were 24.5, 8.5 and 19.3 months respectively. Log-rank tests showed a statistically significant correlation between contralateral SVZ (cSVZ) dose > 59.2 Gy (75th percentile) and poor median PFS (10.37 [95 % CI 8.37–13.53] vs 7.1 [95 % CI 3.5–8.97] months,  $p = 0.009$ ). cSVZ dose > 59.2 Gy was associated with poor OS in the subgroup with subtotal resection/biopsy (HR: 4.83 [95 % CI 1.71–13.97],  $p = 0.004$ ). High ipsilateral SVZ dose of > 62.25 Gy (75th percentile) was associated with poor PFS in both subgroups of high performance status (HR: 2.58 [95 % CI 1.03–6.05],  $p = 0.044$ ) and SVZ without tumoral contact (HR: 10.57 [95 % CI 2.04–49],  $p = 0.008$ ). The effect of high cSVZ dose on PFS lost its statistical significance in multivariate

Cox regression analysis. We report contradictory results compared to previous publications. Changing the clinical practice based on retrospective studies which even do not indicate consistent results among each other will be dangerous. We need carefully designed prospective randomized studies to evaluate any impact of radiation to SVZ in glioblastoma.

**Keywords** Glioblastoma · Radiotherapy · Radiation · Subventricular zone · Survival · Dose

## Introduction

Despite modern treatment modalities, outcome of glioblastoma is still poor. Median survival is around 14 months [1, 2]. Standard primary treatment of glioblastoma is surgical resection followed by chemo-radiotherapy and adjuvant chemotherapy with six cycles of Temozolamide [3]. Local recurrence is the main problem during the course of the disease [4].

Neural stem cells are located in the subventricular zone (SVZ) [5]. A growing body of evidence indicates cells with cancer stem cell (CSC) properties causing glioblastoma in preclinical models [6–9]. CSCs are known to be resistant to radiation and chemotherapy [10–12]. Conversely, there are also publications demonstrating that cells residing in SVZ have no proliferative or triggering effect on tumor. Moreover, there is evidence of antitumoral immune-reactive and inflammatory response originated from the neural stem cells in the SVZ [13, 14] against malignancy.

Lim et al. [15] and Adeberg et al. [16] separated glioblastoma cases into categories based on relationship of tumor location to SVZ and/or cortex, reporting that CSCs residing in SVZ may be responsible of glioblastoma

---

O. Elicin · E. Inac · S. Karacam · O. E. Uzel  
Radiation Oncology Department, Cerrahpasa Faculty of  
Medicine, Istanbul University, I.U. Cerrahpasa Tıp Fakültesi,  
Radyasyon Onkolojisi A.D. – Fatih, 34098 Istanbul, Turkey

O. Elicin (✉)  
Inselspital, Radiation Oncology Department, University of Bern,  
Inselspital Klinik und Poliklinik für Radio-Onkologie,  
3010 Bern, Switzerland  
e-mail: olgunelicin@gmail.com

E. K. Uzel  
Radiation Oncology Department, Sisli Etfal Teaching Hospital,  
Sisli Etfal Egitim Arastirma Hastanesi, Radyasyon Onkolojisi  
Klinigi – Sisli, 34371 Istanbul, Turkey

formation in some cases. Calabrese et al. [17] showed that cells having CSC properties can be ectopically located in any region of the brain where vascular endothelia is present regardless of SVZ. An elegant review describes the advancements of CSC research and the lack of consensus about ‘Glioblastome CSCs’ [18].

There are four retrospective studies which reported better outcomes with higher ipsilateral SVZ (iSVZ) radiation doses for either overall survival (OS), progression free survival (PFS) or both [19–22], but without any dose consensus. We could only find one abstract with negative results showing no association between iSVZ dose and survival [23]. We doubted whether this situation is related to a publication bias against negative results and whether we can obtain similar results showing any statistical correlation or not, hence the latter becoming the aim of this study.

## Materials and methods

Sixty-six patients with newly diagnosed glioblastoma were treated in our clinic between January 2010 and June 2012. Patients had to be over 18 years old with histopathologically confirmed glioblastoma having at least 1 month of follow-up after the end of concomitant chemo-radiotherapy. Patients who were not treated with standard chemo-radiotherapy [3] were excluded. Discontinuation of radiotherapy or chemotherapy during the concomitant phase (2 cases) was also an exclusion criterion. In order to have a minimal follow-up of one year, patients whose treatments were ended within the last year before the data analysis were not included in the study. Pre- and post-operative Magnetic Resonance Imaging (MRI) was mandatory. Patients with multiple tumors, bilaterally extending tumors (2 cases), tumors arising from the midline (1 case) or from an infratentorial location (1 case) were excluded. The remaining 60 patients were included in the study.

Treatment planning system used before 2010 was unavailable. Therefore the backed-up data of 3D conformal radiotherapy plans (3DCRT) before 2010 could not be acquired. Planning tomographies were scanned with 2.5 mm slice thickness. CTV was defined as resection cavity and residual tumor (if any) identified on gadolinium enhanced T1 sequence plus a margin of 2 cm including edema visualized in T2 sequence of MRIs, but at the same time excluding anatomical barriers. PTV margin was 3 mm around CTV. 60 Gy in 2 Gy daily fractions was prescribed to PTV in single phased 3DCRT plans. Treatments of two patients were planned in Varian Eclipse (Varian Medical Systems, Palo Alto, CA, USA) and the rest in Precise Plan (version 2.16 – Elekta Oncology Systems, Crawley, UK) software, both configured for 6-MV photons.

SVZ volume delineation was done by a single physician according to guidelines [19]. Structures of 3–5 mm thick strips were created lateral to the lateral ventricles. Ipsilateral SVZ were defined as the SVZ on the tumor side. For each patient, contralateral and bilateral SVZ were also created (cSVZ and bSVZ respectively). Dose to each SVZ volume was calculated and measured with dose volume histograms generated on the original plans retrospectively.

All patients were evaluated three monthly after the end of the adjuvant chemotherapy. Progression was defined as radiological verification of recurrence or progression. Additional MRIs were requested in case of clinical suspicion. Patients in undistinguished progression/pseudoprogression status were continued to be followed and confirmed progressions were retrospectively registered with their initial date of suspicion as the date of progression. Decision for salvage treatment depended on mutual discretion of the treating physician, patient and the family.

Information about patients lost to follow-up was acquired from the national database. Descriptive statistics were reported. Date of surgery or biopsy (Bx) was chosen for PFS and OS calculation. Kaplan–Meier method with 95 % confidence intervals (CI) was used for median PFS and OS calculation. Patients lost to follow-up or those who were alive without progression were censored at the time of last follow-up for PFS. Patients who were alive were censored at the time of analysis for OS. CTV, iSVZ, cSVZ and bSVZ doses and CTV volumes were dichotomized each for 25th, 50th (median) and 75th percentiles. Log-rank tests for PFS and OS were used for SVZ infiltration (+/–), median age ( $\geq 54$ ; +/–), Karnofsky Performance Status (KPS  $\geq 90$ ; +/–), gender (m/f), gross total resection status (GTR; +/–), doses to CTV, CTV volumes and doses to SVZ structures. Univariate and multivariate Cox proportional hazard models were used to determine the prognostic factors and investigate any relationship between the parameters and survival. Spearman correlation coefficient was used to study the relationship between CTV volume and dose to SVZ’s.

All tests were done using JMP 9.0 (SAS Institute Inc. North Carolina, USA). Two-sided *p* values under 0.05 were considered as statistically significant.

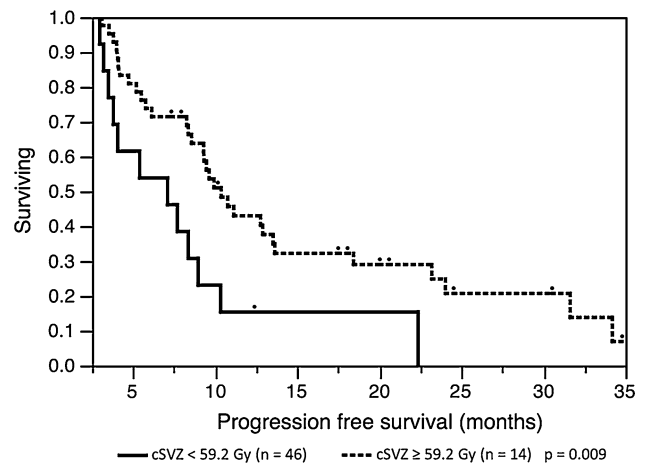
## Results

Descriptive patient characteristics are available on Table 1. All patients had newly diagnosed glioblastomas. Median follow-up for surviving patients were 24.5 months. Median PFS and OS of the whole cohort were 9.5 (95 % CI 7.7–11.1) and 19.27 (95 % CI 12.77–25.23) months respectively. All patients completed concomitant chemo-radiation course without any interruption.

**Table 1** Description of patient and treatment characteristics

Characteristic	All (n = 60)
Age at diagnosis (years)	
Mean	53.1 ± 12.7
Median	54 (range 24–86)
Sex	
Female	21 (35 %)
Male	39 (65 %)
Extent of resection	
GTR	26 (43.3 %)
STR/Bx	34 (56.7 %)
KPS	
≥90	33 (55 %)
<90	27 (45 %)
Tumor SVZ contact	
+	32 (53.3 %)
–	28 (46.7 %)
Tumor side	
Left	27 (45 %)
Right	33 (55 %)
Lobe where the tumor resides	
Frontal	12 (20 %)
Parietal	5 (8.3 %)
Temporal	19 (31.7 %)
Occipital	4 (6.7 %)
Intraventricular	1 (1.6 %)
Multilobar extension	19 (31.7 %)
CTV	
Mean volume (cm <sup>3</sup> )	299 ± 158.5
Quartile volumes (25th, 50th, 75th)	174.1, 280.9, 400.2
Mean dose (Gy)	62.7 ± 0.7
Quartile doses (25th, 50th, 75th)	62.1, 62.7, 63.2
iSVZ	
Mean volume (cm <sup>3</sup> )	5.2 ± 2.4
Mean dose (Gy)	58.8 ± 6.5
Quartile doses (25th, 50th, 75th)	58.3, 61.4, 62.2
cSVZ	
Mean volume (cm <sup>3</sup> )	6.4 ± 2.3
Mean dose (Gy)	44.9 ± 15.9
Quartile doses (25th, 50th, 75th)	32.3, 50.6, 59.2
bSVZ	
Mean volume (cm <sup>3</sup> )	11.6 ± 4.2
Mean dose (Gy)	51.9 ± 10.4
Quartile doses (25th, 50th, 75th)	43.8, 55, 60.4

Log-rank tests showed a significant relation of cSVZ dose >59.2 Gy (75th percentile) with poor median PFS (10.37 [95 % CI 8.37–13.53] vs 7.1 [95 % CI 3.5–8.97] months, *p* = 0.009) (Fig. 1). PFS were also worse in women than men (median PFS of 7.68 [95 % CI 4–9] vs 10.77 [95 % CI



**Fig. 1** Progression free survival by contralateral subventricular zone (cSVZ) dose based on log-rank test

8.57–23.2] months, *p* = 0.009). Those two parameters had significant effect on PFS in univariate Cox proportional hazard analysis, but the effect of high cSVZ dose on PFS lost its statistical significance in multivariate analysis (Table 2) and only sex remained as a significant factor.

Univariate analyses on doses were repeated by stratifying the patients into subgroups of age, sex, resection status, SVZ tumoral contact and KPS (Table 3). cSVZ > 59.2 Gy remained to be a significant prognostic factor for poor PFS in subgroups of age ≥ 54 (HR: 6.78 [95 % CI 1.97–24.26], *p* = 0.003), male gender (HR: 3.96 [95 % CI 1.36–10.33], *p* = 0.014), subtotal resection STR/Bx (HR: 8.9 [95 % CI 2.83–30.9], *p* = 0.001), SVZ contact positive (HR: 2.56 [95 % CI 1.05–6.19], *p* = 0.039) and KPS ≥ 90 (HR: 3.43 [95 % CI 1.09–9.25], *p* = 0.037). cSVZ dose > 59.2 Gy was also associated with poor OS in STR/Bx subgroup (HR: 4.83 [95 % CI 1.71–13.97], *p* = 0.004). High iSVZ dose of >62.25 Gy (75th percentile) was associated with poor PFS in both subgroups of high performance status (HR: 2.58 [95 % CI 1.03–6.05], *p* = 0.044) (Fig. 2) and SVZ without tumoral contact (HR: 10.57 [95 % CI 2.04–49], *p* = 0.008) (Fig. 3).

Finally we used Spearman’s  $\rho$  to identify any correlation between CTV volume and SVZ doses. Although CTV volume was associated with neither PFS nor OS in univariate and multivariate analysis, CTV volume was significantly associated with each SVZ dose ( $\rho$  range 0.39–0.61, *p* < 0.002).

**Discussion**

Even today glioblastoma is a devastating disease with poor survival rates and causing gradually deteriorating quality of life. Our patient characteristics and methodology was quite

**Table 2** Treatment outcome analysis of glioblastoma patients with Cox proportional hazards model

Parameter	PFS		OS	
	HR (95 % CI)	<i>p</i> value	HR (95 % CI)	<i>p</i> value
Univariate analysis				
Age ≥ 54 vs < 54	1.44 (0.79–2.66)	0.238	1.63 (0.87–3.16)	0.131
Sex (f vs m)	2.83 (1.48–5.36)	0.002	1.44 (0.74–2.71)	0.274
GTR vs STR/Bx	1.47 (0.77–2.80)	0.240	1.10 (0.55–2.19)	0.785
Tumor contacts SVZ	1.13 (0.62–2.06)	0.700	1.24 (0.66–2.37)	0.509
KPS ≥ 90	1.04 (0.58–1.92)	0.888	1.17 (0.62–2.27)	0.621
CTV volumes (cm <sup>3</sup> )				
>174.1	0.74 (0.38–1.53)	0.408	0.83 (0.41–1.87)	0.638
>280.9	1.15 (0.63–2.09)	0.638	1.35 (0.72–2.61)	0.352
>400.2	0.89 (0.43–1.72)	0.736	0.82 (0.38–1.63)	0.580
CTV doses (Gy)				
>62.1	0.86 (0.46–1.73)	0.665	0.93 (0.47–1.97)	0.845
>62.7	0.84 (0.46–1.53)	0.578	0.91 (0.48–1.72)	0.769
>63.2	0.94 (0.46–1.79)	0.848	0.62 (0.28–1.27)	0.197
iSVZ doses (Gy)				
>58.3	1.43 (0.72–3.08)	0.318	1.12 (0.54–2.62)	0.773
>61.4	1.09 (0.60–1.99)	0.767	0.84 (0.44–1.59)	0.591
>62.2	1.16 (0.56–2.24)	0.671	1.10 (0.52–2.14)	0.800
cSVZ doses (Gy)				
>32.3	1.04 (0.55–2.12)	0.906	1.74 (0.78–4.61)	0.187
>50.6	0.98 (0.54–1.78)	0.946	1.11 (0.59–2.13)	0.744
>59.2	2.42 (1.18–4.71)	0.018	1.49 (0.72–2.88)	0.268
bSVZ doses (Gy)				
>43.8	0.84 (0.43–1.78)	0.640	1.18 (0.55–2.93)	0.689
>55	1.02 (0.56–1.87)	0.947	1.19 (0.62–2.30)	0.604
>60.4	0.97 (0.46–1.89)	0.938	0.67 (0.29–1.37)	0.282
Multivariate Cox regression <sup>a</sup>				
Sex (f vs m)	2.39 (1.19–4.73)	0.015	–	–
cSVZ > 59.2 Gy	1.72 (0.80–3.53)	0.161	–	–

<sup>a</sup> Only parameters with *p* < 0.1 included for backward elimination

similar with the previous studies [19–22] about this subject: Male/female ratio seems to be around 2:1 [19–22]; the GTR rates [21, 22], performance scores [22] and periventricular tumoral contact ratios [22] are also nearly the same. But most of the dosimetric data and their correlation to outcome do not comply with previously published data. Mean doses to iSVZ, cSVZ and bSVZ are very heterogeneous throughout the published literature. Our dosimetric results are only concordant with those of Gupta et al. [20]. The reason for that might be the difference in techniques or another factor, like tumor location. For example, only Lee et al. [21] did not include patients with multiple and bilateral tumors. Others did not report about this entity or included [20] those patients. Only Chen et al. [22] reported their choice of planning method which was intensity modulated radiotherapy. We do not have information about the technique used by other groups. Total prescribed doses also varied with the greatest range of 30–63 Gy in the

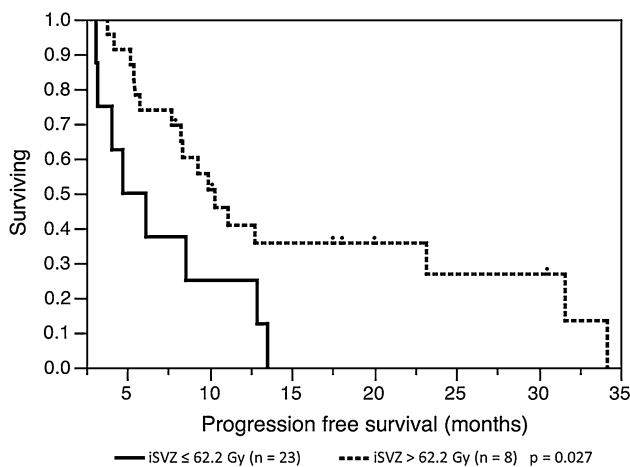
study of Evers et al. [19] who also included grade 3 glial tumors. Target volume definition strategy and 60 Gy single phase approach [3] we and Gupta et al. used is widely preferred in European centers whereas two phase approach which is preferred in North America was chosen in the studies of Chen et al. and Lee et al.

The first study including only glioblastoma patients was published as an abstract by Slotman et al. [23] with a cohort of 40 patients. So far it is the only negative study we are aware of. The second study was published by Gupta et al. [20]. They studied 40 glioblastoma cases. Old age (>50), poor recursive partitioning analysis class and increased cSVZ dose were related significantly to worse PFS and OS in univariate survival analysis. In multivariate Cox model, only iSVZ dose was significant for OS. Results being different from the present study may be related to three factors: First, multifocal and bilateral tumors were also included in the study. Second, there is no information

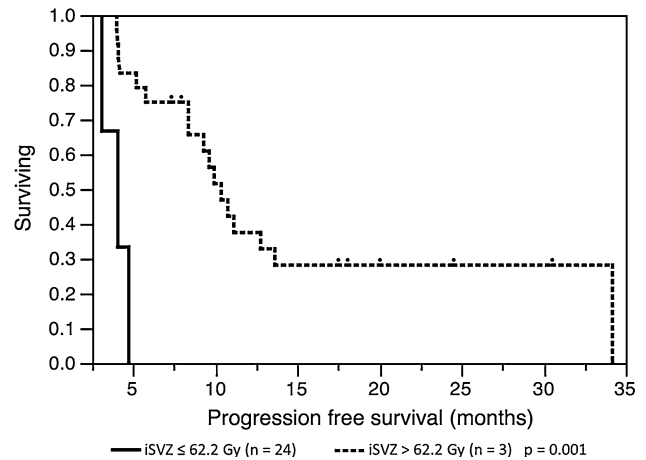
**Table 3** Univariate subgroup analyses with Cox proportional hazard model (only significant results shown)

Dose stratified under subgroups	PFS		OS	
	HR (95 % CI)	<i>p</i> value	HR (95 % CI)	<i>p</i> value
Age ≥ 54				
cSVZ > 59.2 Gy	6.78 (1.97–24.26)	0.003	–	–
Male sex				
cSVZ > 59.2 Gy	3.96 (1.36–10.33)	0.014	–	–
STR/Bx				
cSVZ > 59.2 Gy	8.9 (2.83–30.9)	0.001	4.83 (1.71–13.97)	0.004
SVZ contact: yes				
cSVZ > 59.2 Gy	2.56 (1.05–6.19)	0.039	–	–
SVZ contact: no				
iSVZ > 62.2 Gy	10.57 (2.04–49)	0.008	–	–
KPS ≥ 90				
iSVZ > 62.2 Gy	2.58 (1.03–6.05)	0.044	–	–
cSVZ > 59.2 Gy	3.43 (1.09–9.25)	0.037	–	–

– Non-significant (*p* > 0.05)



**Fig. 2** Progression free survival by ipsilateral subventricular zone (iSVZ) dose in patients having Karnofsky Performance ≥90 based on log-rank test



**Fig. 3** Progression free survival by ipsilateral subventricular zone dose (iSVZ) in patients having no tumor contact to the subventricular zone based on log-rank test

about associated parameters in the multivariate Cox model being used as nested or not. Third; different from the present study, censored patients had to be with at least 6-months of follow-up after completion of therapy.

The last two studies were published recently. Lee et al. [21] analysed a combined cohort of 173 patients from two centers. This is the largest cohort studied thus far. Twenty-one patients received iSVZ dose > 59.4 Gy and univariate analysis showed a significantly longer median PFS with high dose. Surgery (STR vs GTR and Bx vs GTR), age >50 and occipital lobe tumor location were also significantly associated with both PFS and OS in the univariate analysis. In one of the two multivariate Cox models used, iSVZ dose > 59.4 Gy, surgery (GTR vs STR and GTR vs Bx) and age <50 remained to be significantly associated with better

PFS but only surgery was correlated with better OS. This article has some unique features: This is the only study which also reported the anatomical sites of the tumors. On the other hand, the authors hypothesized at the beginning that 59.4 Gy may be effective to control CSCs, because 59.4–60 Gy is prescribed in glioblastoma as a standard, therefore used this dose threshold in the statistical analysis and the results were supporting the hypothesis. But when they redid the calculation with other arbitrary threshold levels and mean dose (>50 Gy) to iSVZ, none were associated with significant improvement in PFS. A similar issue is valid for the arbitrary selection of age (50). It is neither mean, median nor some other percentile value. Additionally, our concern for statistics regarding the use of associated values in the same multivariate Cox model in the study of Gupta et al. repeats itself here.

Chen et al. [22] retrospectively analyzed a set of 116 cases. Minimum follow-up time was 7 months. It is the first and only study reporting the planning technique and the presence of direct tumoral contact to SVZ which was not prognostic. In the univariate analysis, only craniotomy vs biopsy was associated with better PFS. For OS age <70 was a better prognostic factor in the subgroups of GTR and STR patients. The subgroup of GTR patients who received >40 Gy had significantly improved PFS and OS in the multivariate analysis. But the reason for choosing 40 Gy as a threshold was not stated in the article.

In our univariate analysis increased cSVZ >59.2 Gy was a strong predictor of PFS and remained to be a significant factor throughout the subgroups of KPS  $\geq$  90, age  $\geq$ 54, male sex, non-GTR and patients with tumoral contact to SVZ. It was a significant factor for worse OS in subgroup without GTR too. Probably the association between increased cSVZ dose and worse PFS is indirectly associated with the extent of disease burden through large CTV volumes. We could not show any significant association between CTV properties and survival but found a significant correlation between CTV volume and SVZ doses. But the same logic should apply to iSVZ dose however mostly it did not: We could only observe a significant impact of increased iSVZ dose >62.25 Gy on worse OS in subgroups of KPS  $\geq$ 90 and patients who did not have any tumor close to ventricles. Finally in the multivariate analysis, only sex remained to be a significant factor on PFS. On the other hand, there is also pre-clinical evidence about anti-tumoral activity and immune response of stem cells residing in the SVZ against glial malignancies [14]. One can even hypothesize that increased radiation dose destroys stem cells residing in SVZ, which involve in parenchymal repair and generate an immune response against tumor.

Our study has limitations: It has all major drawbacks of a retrospective study with a small sample size. Besides we did not investigate the O6-methylguanine-methyltransferase promoter status which may have changed the results. We did not have any distant recurrences or metachronous primaries and therefore could not analyze its relationship with SVZ parameters if there is any.

Relationship between glioblastoma location, SVZ and dose to CTV and SVZs is a very questionable issue prone to speculative discussion. As we tried to emphasize before, those parameters are somehow connected to each other and therefore susceptible to analytical errors. In a disease with such a poor outcome it is exciting to see data about increasing survival rates just by increased radiation dose. But changing the clinical practice based on retrospective studies which even do not indicate consistent results among each other will be dangerous. However it is definitely a subject worth exploring. We need carefully designed

prospective randomized studies to evaluate any impact of radiation to SVZ in glioblastoma.

**Conflict of interest** The authors declare that they have no conflict of interest.

**Ethical standards** The authors declare that the study and reporting methodology complies with the current laws.

## References

- Koshy M, Villano JL, Dolecek TA et al (2012) Improved survival time trends for glioblastoma using the SEER 17 population-based registries. *J Neurooncol* 107:207–212
- Stupp R, Hegi ME, Mason WP et al (2009) Effects of radiotherapy with concomitant and adjuvant temozolomide versus radiotherapy alone on survival in glioblastoma in a randomised phase III study: 5-year analysis of the EORTC-NCIC trial. *Lancet Oncol* 10:459–466
- Stupp R, Mason WP, van den Bent MJ et al (2005) Radiotherapy plus concomitant and adjuvant temozolomide for glioblastoma. *N Engl J Med* 352:987–996
- Oh J, Sahgal A, Sanghera P et al (2011) Glioblastoma: patterns of recurrence and efficacy of salvage treatments. *Can J Neurol Sci* 38:621–625
- Quiñones-Hinojosa A, Sanai N, Soriano-Navarro M et al (2006) Cellular composition and cytoarchitecture of the adult human subventricular zone: a niche of neural stem cells. *J Comp Neurol* 494:415–434
- Singh SK, Clarke ID, Terasaki M et al (2003) Identification of a cancer stem cell in human brain tumors. *Cancer Res* 63:5821–5828
- Galli R, Binda E, Orfanelli U et al (2004) Isolation and characterization of tumorigenic, stem-like neural precursors from human glioblastoma. *Cancer Res* 64:7011–7021
- Bao S, Wu Q, Li Z et al (2008) Targeting cancer stem cells through L1CAM suppresses glioma growth. *Cancer Res* 68:6043–6048
- Cheng L, Wu Q, Huang Z et al (2011) L1CAM regulates DNA damage checkpoint response of glioblastoma stem cells through NBS1. *EMBO J* 30:800–813
- Bao S, Wu Q, McLendon RE et al (2006) Glioma stem cells promote radioresistance by preferential activation of the DNA damage response. *Nature* 444:756–760
- Eramo A, Ricci-Vitiani L, Zeuner A et al (2006) Chemotherapy resistance of glioblastoma stem cells. *Cell Death Differ* 13:1238–1241
- Firat E, Gaedicke S, Tsurumi C et al (2010) Die Bedeutung der Mitotischen Katastrophe nach  $\gamma$ -Bestrahlung von Glioblastomstammzellen. *Strahlenther Onkol* 186(Suppl 1):116
- Bexell D, Gunnarsson S, Nordquist J, Bengzon J (2007) Characterization of the subventricular zone neurogenic response to rat malignant brain tumors. *Neuroscience* 147:824–832
- Mercapide J, Rappa G, Anzanello F, King J, Fodstad O, Lorico A (2010) Primary gene-engineered neural stem/progenitor cells demonstrate tumor-selective migration and antitumor effects in glioma. *Int J Cancer* 126:1206–1215
- Lim DA, Cha S, Mayo MC et al (2007) Relationship of glioblastoma multiforme to neural stem cell regions predicts invasive and multifocal tumor phenotype. *Neuro Oncol* 9:424–429
- Adeberg S, König L, Bostel T et al (2013) Glioblastomrezidivmuster: radiologische Auswertung des Rezidivmusters von 608 Patienten in Bezug auf neuronale Stammzellen der subventrikulären Zone Adeberg. *Strahlenther Onkol* 189(Suppl 1):24–25

17. Calabrese C, Poppleton H, Kocak M et al (2007) A perivascular niche for brain tumor stem cells. *Cancer Cell* 11:69–82
18. Koshy M, Villano JL, Dolecek TA et al (2012) Improved survival time trends for glioblastoma using the SEER 17 population-based registries. *J Neurooncol* 107:207–212
19. Evers P, Lee PP, DeMarco J et al (2010) Irradiation of the potential cancer stem cell niches in the adult brain improves progression-free survival of patients with malignant glioma. *BMC Cancer* 10:384
20. Gupta T, Nair V, Paul SN et al (2012) Can irradiation of potential cancer stem-cell niche in the subventricular zone influence survival in patients with newly diagnosed glioblastoma? *J Neurooncol* 109:195–203
21. Lee P, Eppinga W, Lagerwaard F et al (2013) Evaluation of high ipsilateral subventricular zone radiation therapy dose in glioblastoma: a pooled analysis. *Int J Radiat Oncol Biol Phys* 86:609–615
22. Chen L, Guerrero-Cazares H, Ye X et al (2013) Increased subventricular zone radiation dose correlates with survival in glioblastoma patients after gross total resection. *Int J Radiat Oncol Biol Phys* 86:616–622
23. Slotman BJE, Eppinga WSC, de Haan PF, Lagerwaard J (2011) Is irradiation of potential cancer stem cell niches in the subventricular zones indicated in GBM? (abstr 1058). *Int J Radiat Oncol Biol Phys* 81(Suppl 1):184