

at Jalaripeta, Visakhapatnam

M. V. Hanumantha Rao, M. Satish Kumar, S. Sumithrudu, M. Murali Mohan, V. Uma Mahesh, Shubhadeep Ghosh and G. Maheswarudu

Regional Centre of CMFRI, Visakhapatnam

The Indian oilsardine *Sardinella longiceps*, locally called as 'burra kovallu' or 'Kerala kovallu' forms a juvenile fishery during October - November along the Visakhapatnam coast. This seasonal juvenile fishery is the major source of income generation for the fishermen of Jalaripeta, Visakhapatnam. The boatseine locally called as 'chengula vala' is used for exploiting the oilsardine juvenile population. The net with a height of 30 m and 5 mm mesh size made up of nylon webbing with 60-65 m length head rope is provided with thermocol floats and bottom rope with concrete sinkers at 5 m intermediate distance. Artisanal crafts are used to operate this gear by

13-15 fishermen involved in the operation. The fishermen are divided equally in two groups and each group occupies one boat during boatseine operation. They go at midnight for fishing which continues till next day morning and undertakes 2 - 3 drags with an average catch of 1 - 1.5 t per unit per day. There are about eight units in this fishing village which operated daily with an average production of 186 t in the month of October and 59 t in the first half of November. The size of oilsardine ranged from 64 to 101 mm in the month of October and from 77 to 118 mm in the month of November with corresponding weight range of 2.16 to 8.2 g and 3.4 to 12.2 g, respectively (Fig. 1, 2).

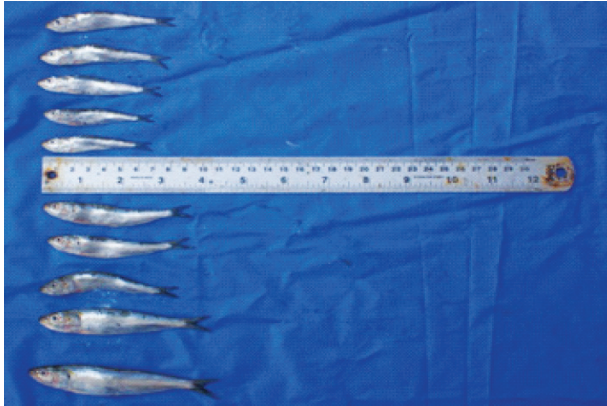


Fig. 1. Juvenile oilsardine landed at Jalaripeta, Visakhapatnam

A detailed analysis on the biology revealed that all the fish were indeterminates in both the months. The study on food and feeding showed that most of the individuals had half filled stomachs. The juveniles were sold at ₹ 8 per kg wet weight and at ₹ 20-22 per dry weight to the local fish meal agents. Their average



Fig. 2. Juvenile oilsardine being sun dried at Jalaripeta, Visakhapatnam

income during these two months was ₹ 8,000-10,000 per month per fisherman, whereas in the remaining months of the year they earn around ₹ 3,000-4,000 per month per fisherman by exploitation of other resources.