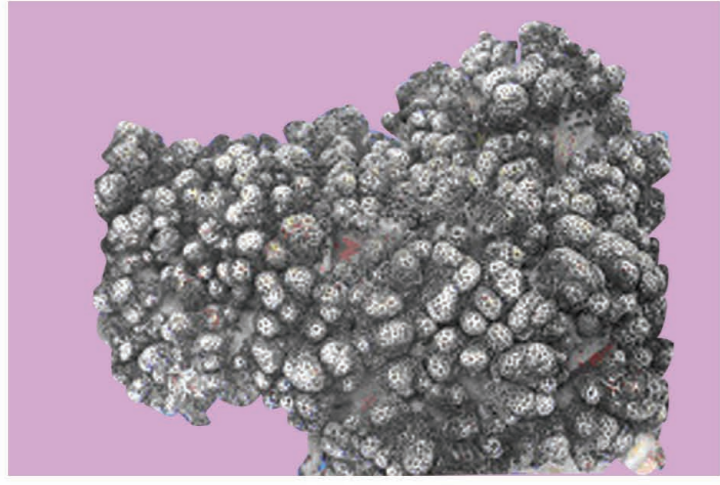


# भारत के मृदु प्रवाल और समुद्री फैन SOFT CORALS AND SEA FANS OF INDIA

## OCTOCORALLIA : ALCYONACEA (SOFT CORALS)



*Cladiella australis*



*Cladiella laciniosa*



*Dampia pocilloporaeformis*



*Lobophytum crassum*



*Lobophytum hirsutum*



*Lobophytum pauciflorum*



*Lobophytum sarcophytoides*



*Sarcophyton cherbonnieri*



*Sarcophyton elegans*



*Sinularia brassica*



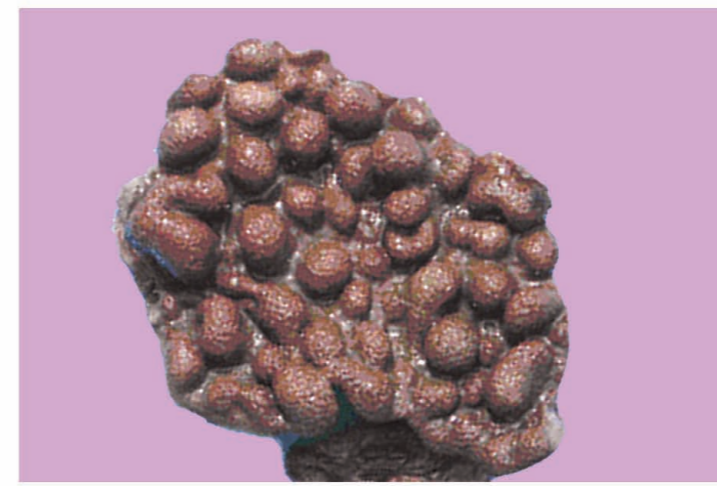
*Sinularia gaveshaniana*



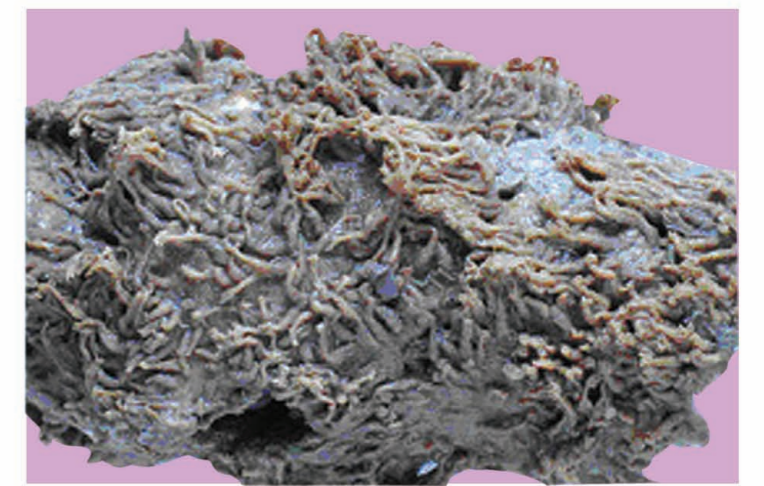
*Sinularia jasminae*



*Sinularia kavarrattiensis*



*Sinularia parulekari*



*Xenia sp.*

## HORN CORALS (SEA FANS)



*Echinogorgia complexa*



*Echinogorgia reticulata*



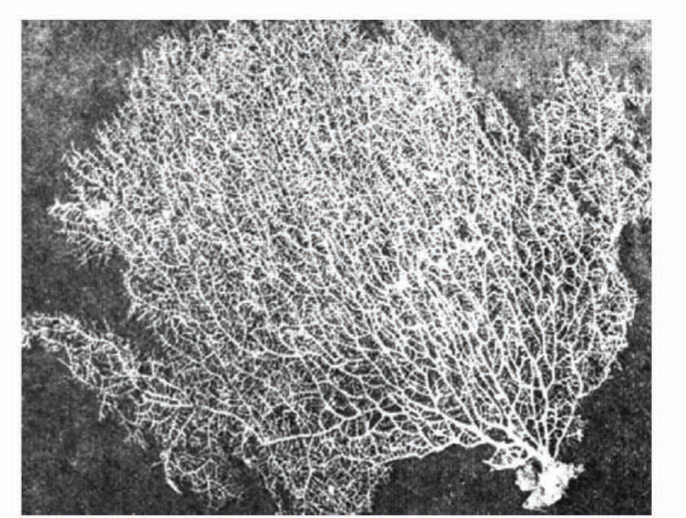
*Echinomuricea indica*



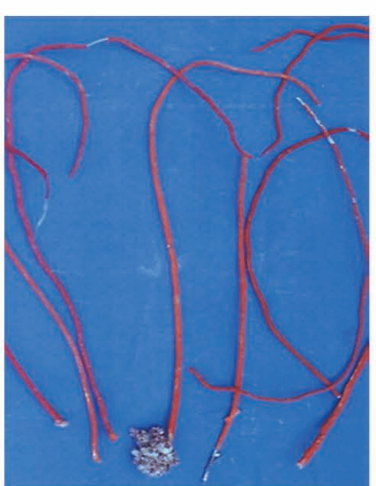
*Echinomuricea indomalaccensis*



*Gorgonella umbraculum*



*Heterogorgia flabellum*



*Juncella juncea*



*Leptogorgia australiensis*



*Plexauroides praelonga cinerea*



*Plexauroides praelonga typica*



*Subergorgia suberosa*



*Thesea flava*



भाकृ अनुप  
ICAR

तैयारी : राणी मेरी जॉर्ज, टी.एस. नियोमी, मेरी के. माणिशेरी, एन.के.सनिल, के.के.जोशी, के.विनोद, मोली वर्गीस, संध्या सुकुमारन और वी.जे.तोमस  
Prepared by : Rani Mary George, T. S. Naomi, Mary K. Manisseri, N. K. Sanil, K. K. Joshi, K. Vinod, Molly Varghese, Sandhya Sukumaran and V. J. Thomas

प्रकाशन : डॉ.जी.सैदा रावु, निदेशक, केंद्रीय समुद्री मात्स्यिकी अनुसंधान संस्थान, कोच्ची - 682 018, केरल, भारत  
Published by : Dr. G. Syda Rao, Director, Central Marine Fisheries Research Institute, Kochi - 682 018, Kerala, India

CMFRI Poster No. 02/2012



कडलमीन  
cadalmin