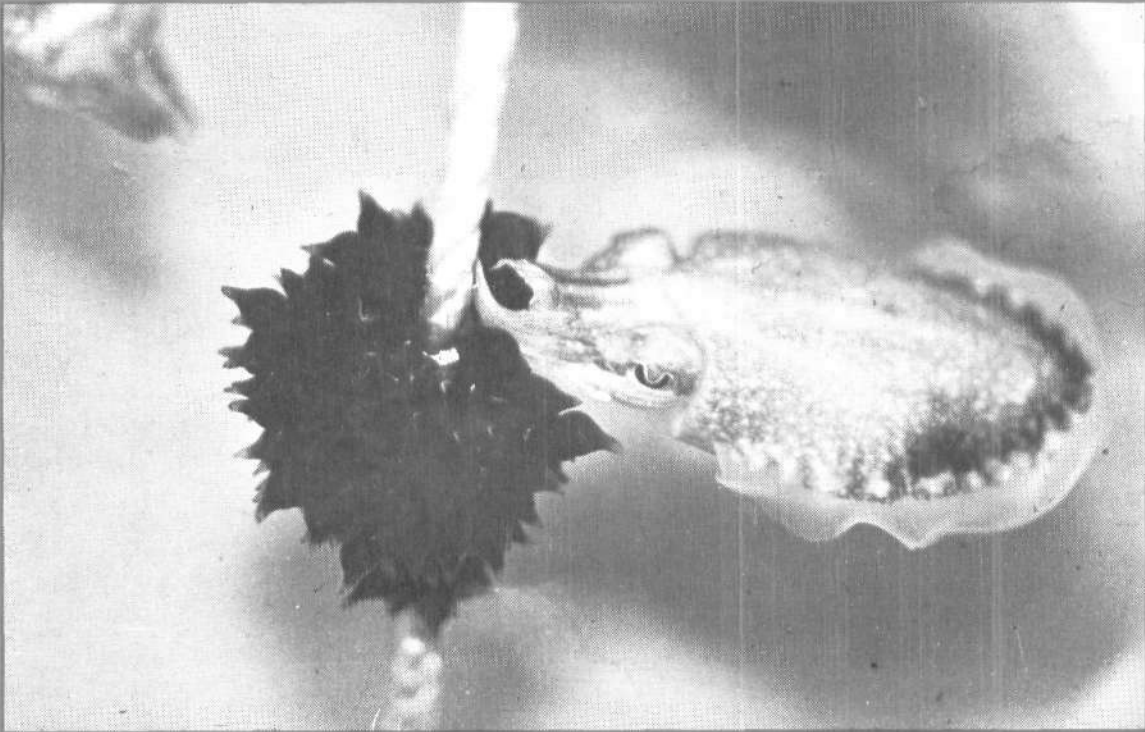




समुद्री मात्स्यकी सूचना सेवा MARINE FISHERIES INFORMATION SERVICE

No. 159

JANUARY, FEBRUARY, MARCH 1999



तकनीकी एवं TECHNICAL AND
विस्तार अंकावली EXTENSION SERIES

केन्द्रीय समुद्री मात्स्यकी CENTRAL MARINE FISHERIES
अनुसंधान संस्थान RESEARCH INSTITUTE
कोचिन, भारत COCHIN, INDIA

भारतीय कृषि अनुसंधान परिषद्
INDIAN COUNCIL OF AGRICULTURAL RESEARCH



Fig. 1. Full view of stranded whale.



Fig. 2. Enlarged head portion of whale.

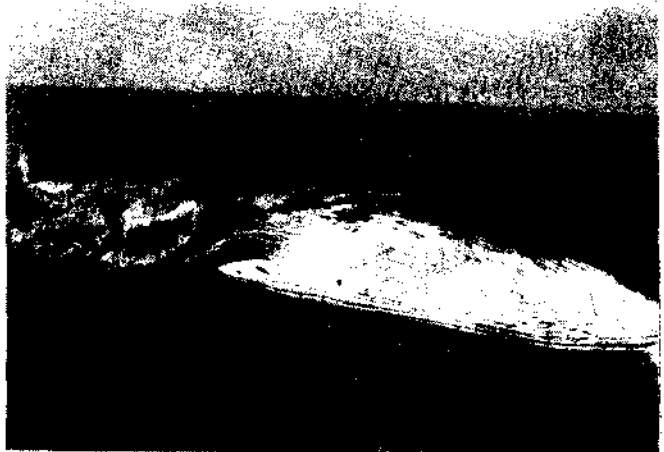


Fig. 3. Extruded viscera of the whale.

901 On the stranding of a whale at Mannalamkunnu, Trichur district, Kerala

A male identified to be *Balaenoptera musculus* with a total length of 14.3 m and weighing approximately 13 t was stranded near Mannalamkunnu landing centre on 30-10-'98 (Fig. 1-3). The whale was in a highly putrified condition while stranded and hence buried immediately by local people. A few morphometric measurements that could be recorded on the specimen are given below.

| | | |
|----------------|---|--------|
| Total length | - | 14.3 m |
| Height of body | - | 2.30 m |

| | | |
|---------------------|---|--------|
| Length of upper jaw | - | 2.30 m |
| Length of lower jaw | - | 2.17 m |

Reported by K.G. Baby, Chavakkad Field Centre of CMPRI, Chavakkad - 680 515, India.
