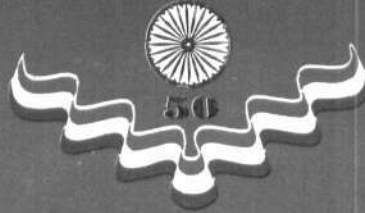


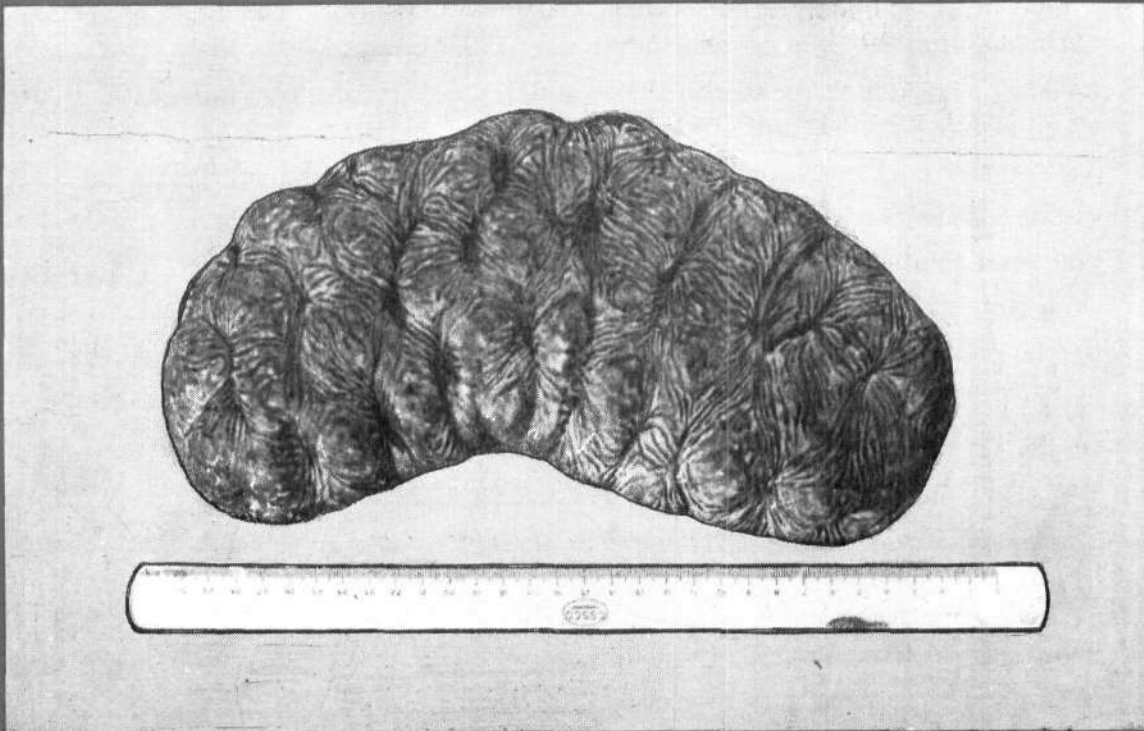


# समुद्री मात्स्यकी सूचना सेवा MARINE FISHERIES INFORMATION SERVICE



No. 158

DECEMBER 1998



तकनीकी एवं विस्तार अंकावली TECHNICAL AND EXTENSION SERIES

केन्द्रीय समुद्री मात्स्यकी अनुसंधान संस्थान कोचिन, भारत CENTRAL MARINE FISHERIES RESEARCH INSTITUTE COCHIN, INDIA

भारतीय कृषि अनुसंधान परिषद  
INDIAN COUNCIL OF AGRICULTURAL RESEARCH

**890 Note on a dolphin, *Sousa chinensis* landed at Veraval**

On 18-10-1997 a humpback dolphin measuring 201 cm in total length was accidentally entangled in a gill net operated off Veraval and was landed at Bhidiya fish landing centre. The specimen was identified as *Sousa chinensis*.

Detailed morphometric measurements in cm of the specimen are listed below.

Total length	: 201
Tip of snout to centre of eye	: 31
Tip of snout to anterior insertion of flipper	: 40
Tip of snout to centre of anus	: 150
Notch of flukes to posterior end of dorsal fin	: 91
Notch of fluke to centre of anus	: 60
Length of fluke on outer curvature	: 42
Length of fluke on inner curvature	: 54
Distance between the extremities of flukes	: 40
Width at insertion of fluke	: 14
Length of dorsal fin base	: 26
Vertical height of dorsal fin	: 12
Length of flipper from anterior insertion to tip	: 26
Length of flipper along the curve of lower border	: 17
Greatest width of flipper	: 8.5

Depth of body at anal region	: 27
Depth of body at origin of flipper	: 28
Depth of body at origin of dorsal	: 48
Depth of body in the region of eye	: 26
Tip of lower jaw to centre of anus	: 148
Length of upper jaw	: 26.5
Length of lower jaw	: 26
Eye diameter — horizontal	: 3
Eye diameter — vertical	: 2
Distance between genital opening and anus	: 4
Total number of teeth on one side of upper jaw	: 35
Total number of teeth on one side of lower jaw	: 36

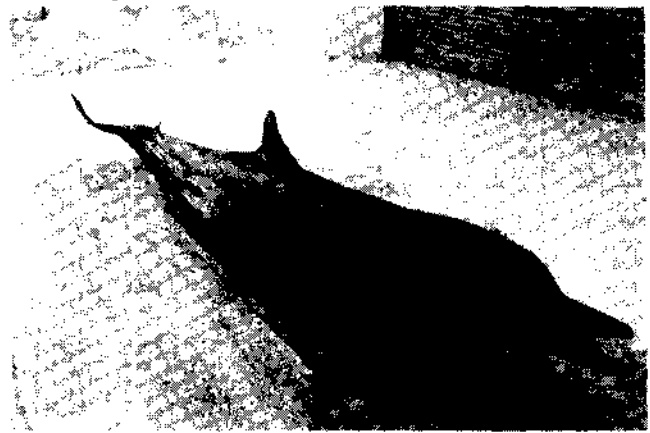


Fig. 1. Hump-back dolphin, *Sousa chinensis* landed at Veraval.

The total length of the alimentary canal (from the mouth to the anus) was 15.48 m. The stomach was practically empty with only remnants of fish. The weights in g of some of the internal organs were :

Heart	: 510 g
Lungs	: 2,580 g
Liver	: 2,500 g and
Kidneys	: 1,000 g

**Reported by : Joe K. Kizhakudan, B., Manojkumar, A.P., Dineshababu and Sujitha Thomas, Veraval Research centre of C.M.F.R.I., Veraval, Gujarat - 362 269, India.**

\*\*\*\*\*