



MARINE FISHERIES INFORMATION SERVICE



Technical and Extension Series

CENTRAL MARINE FISHERIES RESEARCH INSTITUTE

Vol. 104

April, May, June 1990

COCHIN, INDIA

INDIAN COUNCIL OF AGRICULTURAL RESEARCH

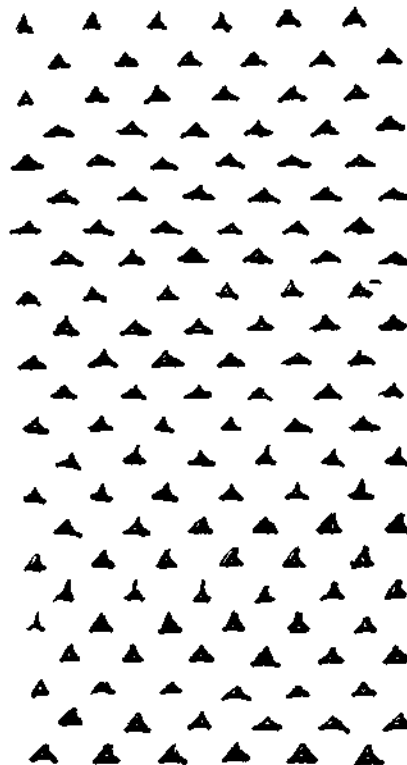
TAGGED TIGER SHARK (*GALEOCERDA CUVIERI*) LANDED AT TUTICORIN*

On 24 - 8 - 1989, during one of our regular observations at Tuticorin north landing centre, we were informed by some fishermen that a shark had landed with a belt around its neck. It was a female tiger shark *Galeocerda cuvieri* (Le Sueur). This shark was landed with a tag in the form of a girdle round about the nape just behind the 5th gill opening. The tag was pierced through the muscle at the base of right pectoral fin. Except at the place where the tag had passed through, the muscles of the shark had out grown the tag causing a gaping wound 20 mm deep and 25 mm wide around the nape of the shark. The tag measured 1045 mm in circumference and 10 mm in width. It was of plastic material and the joint was securedly pasted by a synthetic gum. Coded markings were imprinted to a length of 33 mm of the tag from one end.

The shark had an ash grey colour dorsally and pale white at the ventral surface. There were 33 vertical stripes on the body. Mouth rounded with four rows of strongly serrated teeth in each jaw. Each row with 23 powerful teeth.

The shark was caught by a mechanised Tuticorin type boat using hooks and line. The fish was caught at a distance of 40 km from shore southeast of Tuticorin in the 26 fathom depth area. Only this shark was caught by them on that day. The fish weighed 130 kg and was sold by auction for Rupces 916.

Morphometric measurements (in mm) of tagged tiger shark *Galeocerda cuvieri* caught off Tuticorin on 24 - 8 - 1989 are given overleaf.



A

Fig. 1 A. Coded markings on the tag.

* Reported by P. Sam Bennet, G. Arumugam and T. S. Balasubramanian, Tuticorin Research Centre of CMFRI, Tuticorin.

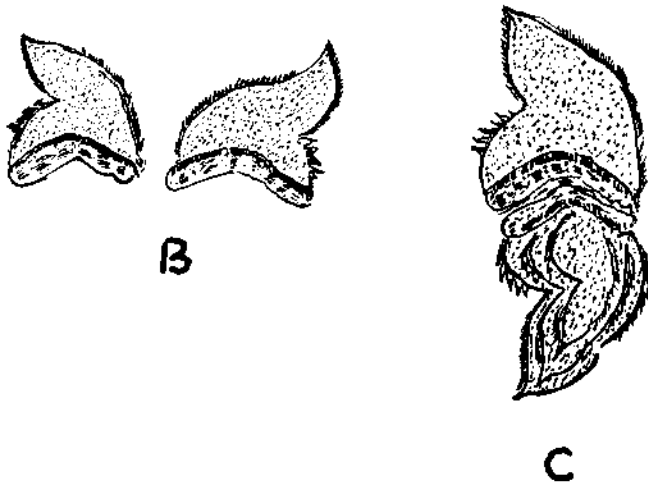


Fig. 1 B. Teeth details, C. Teeth arrangement.



Fig. 2 The tagged shark - a lateral view.



Fig. 3 The ventro-lateral view of the tagged shark.

Total length	2,050
Fork length	1,680
Sex	Female
snout to origin of pectoral	540
Snout to origin of pelvic	1,140
Snout to first gill slit (head length)	430
Snout to anterior margin of eye	380
Snout to inner ends of nostrils	210
Nostril width	15
Distance in between inner ends of nostrils	250
Distance from eye to 5th gill slit	390
Head width through 1st gill slit	1,010
Horizontal diameter of eye	30
Vertical diameter of eye	25
Inter orbital distance	400
Mouth width	360
Mouth height	110
Inter dorsal distance	910
Second dorsal to origin of caudal	320
Distance from pectoral to pelvic	600
Distance from anal to origin of caudal	480
First dorsal base	230
First dorsal height	305
Second dorsal base	90
Second dorsal height	105
Anal base	80
Anal height	100
Pectoral length	375
Pectoral base	180
Caudal upper lobe from origin to tip	700
Caudal lower lobe	340
Depth of body through pectoral	1,030
Depth of body through anal	670
Length of 1st gill slit	262
Length of third gill slit	270
Length of posterior extension of 1st dorsal	130
Length of posterior extension of 2nd dorsal	105
Length of posterior extension of anal	80