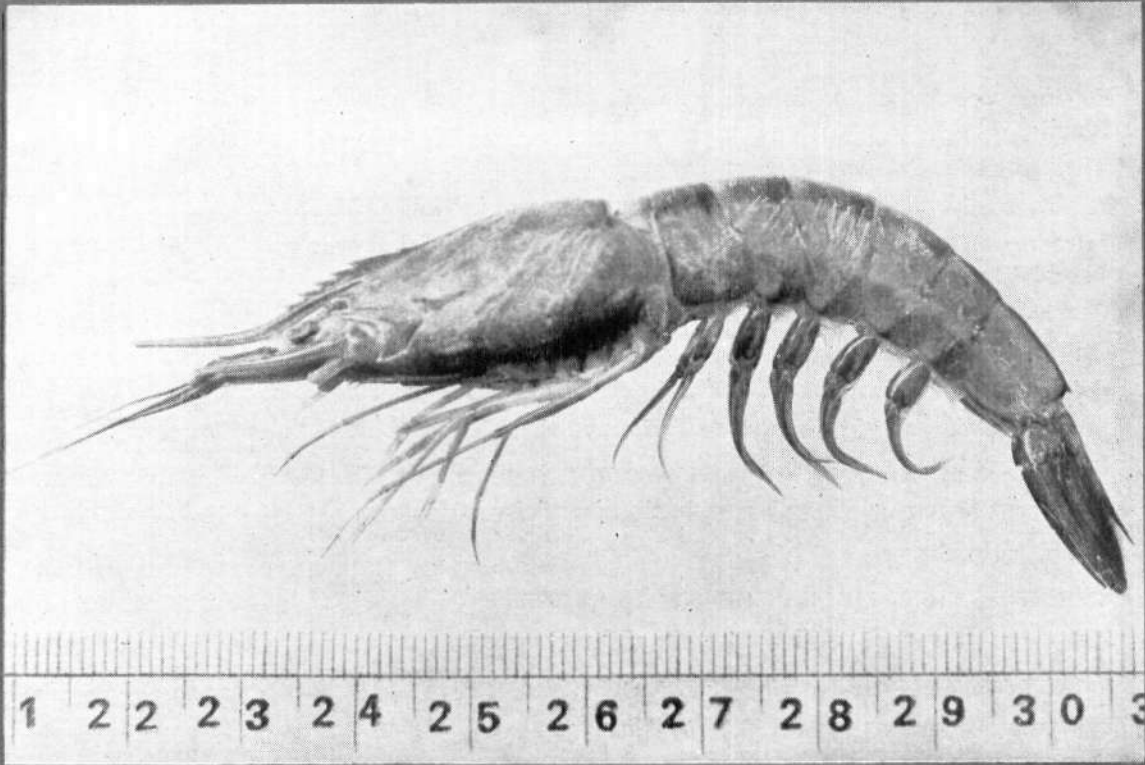




समुद्री मात्स्यकी सूचना सेवा MARINE FISHERIES INFORMATION SERVICE

No. 102

DECEMBER 1989



तकनीकी एवं विस्तार अंकावली TECHNICAL AND EXTENSION SERIES

केन्द्रीय समुद्री मात्स्यकी अनुसंधान संस्थान कोचिन, भारत CENTRAL MARINE FISHERIES RESEARCH INSTITUTE COCHIN, INDIA

भारतीय कृषि अनुसंधान परिषद
INDIAN COUNCIL OF AGRICULTURAL RESEARCH

ON TWO SPECIES OF MARINE TURTLES CAUGHT OFF DHANUSHKODI, GULF OF MANNAR*

A female leatherback turtle *Dermochelys coriacea* (Fig. 1) was captured on 14-2-89, at 0400 hrs in a trawl net operated from a 10 m long mechanised boat, 30 km southeast of Pamban opposite to Dhanushkodi at about 13 m depth. It was brought to the



Fig. 1. The leatherback turtle landed at Pamban on 14-2-1989

* Reported by S. Krishnapillai and C. Kasinathan, Regional Centre of CMFRI, Mandapam Camp.

Therkuvadi landing centre in dead condition. While observing the leatherback turtle, an Olive Ridley *Lepidochelys olivacea* (Fig. 2) was also landed by a trawl boat. (Fig. 3). The morphometric measurements (in cm) of the two turtles are given below.



Fig. 2. The Olive Ridley turtle landed at Pamban on 14-2-1989.

Body characters	Leather-back turtle	Olive Ridley
Carapace length	162	67
Carapace width	86	56
Head length	47	—
Plastron length	150	51
Plastron width	87	48.5

Body Characters	Leather-back turtle	Olive Ridley
Anterior flipper length	102	38
Posterior flipper length	56	—
No. of spines in the anterior flipper		1
Weight in kg	300	—
Sex	Female	—

