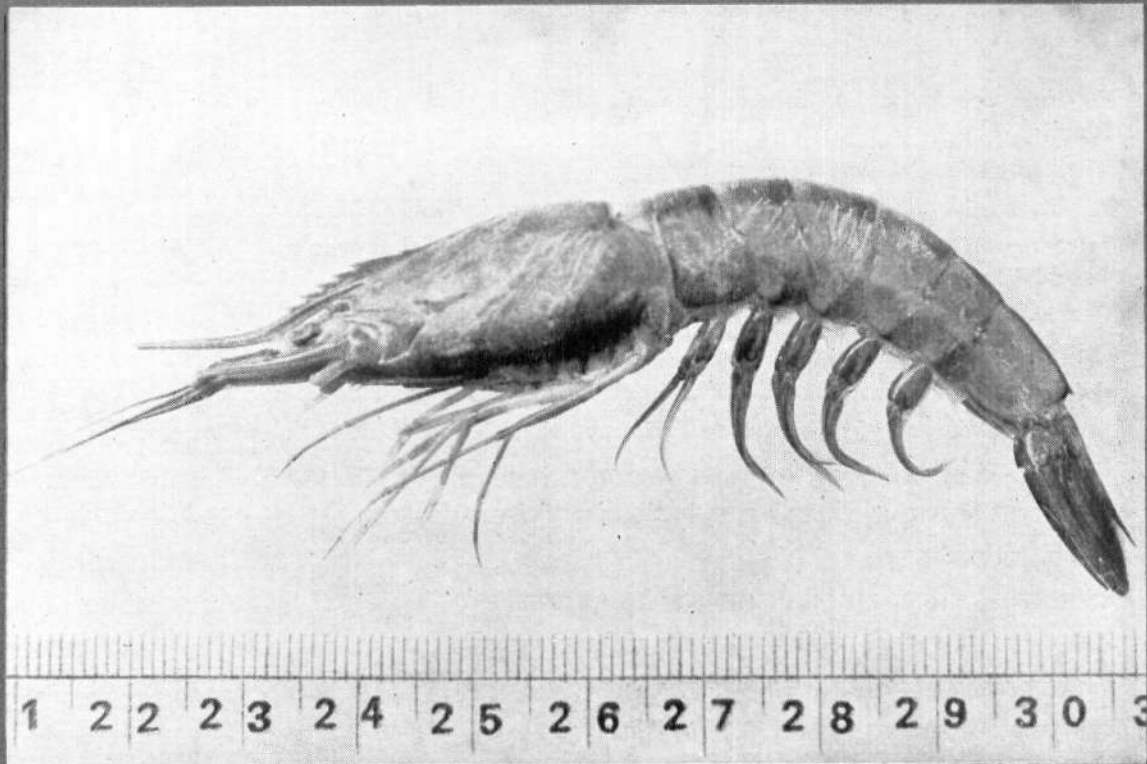




समुद्री मात्स्यकी सूचना सेवा MARINE FISHERIES INFORMATION SERVICE

No. 102

DECEMBER 1989



तकनीकी एवं विस्तार अंकावली TECHNICAL AND EXTENSION SERIES

केन्द्रीय समुद्री मात्स्यकी अनुसंधान संस्थान कोचिन, भारत CENTRAL MARINE FISHERIES RESEARCH INSTITUTE COCHIN, INDIA

भारतीय कृषि अनुसंधान परिषद
INDIAN COUNCIL OF AGRICULTURAL RESEARCH

ON A FIN WHALE STRANDED AT SOMESWARA, SOUTH KANARA*

A huge whale was observed floating near the shore at Ullal by the fishermen in the evening of 15-3-1989. On 17-3-1989, a local news paper which reported the news with the photo of the whale stranded at



Fig. 1. Ventro-lateral view showing the size of flipper.

* Reported by G.M. Kulkarni, P.U. Zacharia, S. Kemparaju, D. Nagaraja, Y. Muniyappa and R. Appaya Naik of Mangalore Research Centre of CMFRI, Mangalore.

Someswara stated that the whale sighted at Ullal was dragged away from the shore into the sea for about 15-20 km and released by the trawler fisherman. But the whale was swept shoreward by strong waves and was stranded at Someswara beach on 16-3-1989. On receipt of the news the authors visited the place on 17-3-1989.



Fig. 2. Ventral view showing prominent genital opening.



Fig. 3. Lateral view showing the extent of ventral grooves upto the umbilicus.

The carcass was floating in water near the beach being tossed about by the waves and not completely ran aground. Hence a few morphometric measurements could only be taken.

The presence of ventral grooves and other characters facilitated to identify the specimen belonging to the genus *Balaenoptera physalis*.

Some of the measurements (in cm) of the whale taken in the field are given below:

| | |
|---|-------|
| Total length (tip of the lower jaw to tip of the fluke) | 1,402 |
| Length of each flipper..... | 165 |
| Length of fluke..... | 183 |
| Distance between flipper base to origin of fluke..... | 1,037 |
| Distance from origin of fluke to genito-anal slit... | 457 |
| Number of ventral grooves..... | 62 |
| Ratio of flipper length to the total length..... | 1:9 |

The whale was a female with prominent genital opening (Fig. 2) with maximum girth at the region of flippers. The flipper was comparatively smaller (Fig. 3). The dorsal fin was triangular in shape and placed slightly nearer to caudal than to the lower jaw and approximately opposite to the genital opening. The ventral grooves were very distinct and extended upto umbilicus.

