

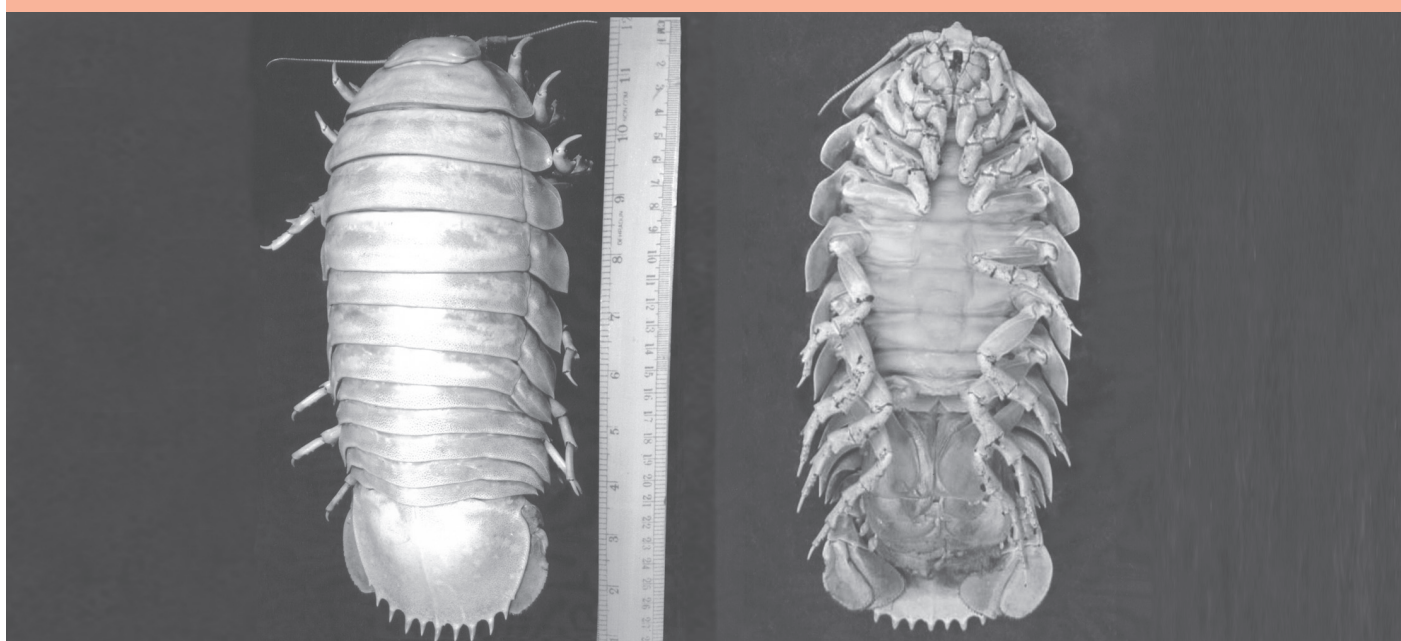
ISSN 0254-380 X



# MARINE FISHERIES INFORMATION SERVICE

No. 187

January, February, March, 2006



TECHNICAL AND EXTENSION SERIES

**CENTRAL MARINE FISHERIES RESEARCH INSTITUTE**

COCHIN, INDIA

(INDIAN COUNCIL OF AGRICULTURAL RESEARCH)

## Heavy landings of juveniles of grouper in trawl at Neendakara Fisheries Harbour, Kollam

Neendakara Fisheries Harbour is one of the major fish landing centres of Kerala. Every day 150 to 200 trawlers operate in the depth range of 14-80 m. The trawl catch consists of adults and juveniles of penaeid and non-peneid prawns, ribbonfishes, sardines, sciaenids, Decapterus, mackerel, flatfishes, whitebaits, lizardfishes,

threadfin breams and a wide variety of miscellaneous fishes and non-target benthic biota.

During August- December 2005, a large number of juveniles of the grouper *Epinephelus diacanthus* was landed by the trawlers. The average catch/hour was 1.5 kg (Table-1), estimated catch was 316 t and

Table-1. Landings of *Epinephelus diacanthus* juveniles at Neendakara Fisheries Harbour by trawlers

Months	Effort (AFH)	Catch(t)	CPH (kg)	Estimated Nos
August	57979	74	1.28	588247
September	36851	18	0.49	0
October	55676	85	1.53	4173648
November	34510	64	1.85	1689887
December	19989	75	3.75	1849981
Total	205005	316	1.54	8301763

the estimated numbers was about 8301763 during this period. The total length ranged from 85 - 180 mm and weight 10-78g. The stomach of most individuals was full with crabs, stolephorus and Squilla. The occurrence of juveniles of groupers in large numbers in the coastal shallow waters of

Needakara might be due to the promimity to the freeding ground and their coastward migration for feeding. The catch was sold in local fish markets along with other trash fishes.

---

Reported by: P.T.Mani, CMFRI, Cochin