



Marine Fisheries Information Service

Technical and Extension Series

Number 199

January - March 2009



Central Marine Fisheries Research Institute

(Indian Council of Agricultural Research)

Post Box No. 1603, Cochin - 682 018, Kerala, India

WWW.cmfri.org.in

New Fish meal plant at Karwar to process oil sardine

P. S. Swathi Lekshmi, Lingappa and Chandrakant Ganapati Ulvekar

Mangalore Research Centre of CMFRI, Mangalore

Karwar Research Centre of CMFRI, Karwar

Karnataka recorded an appreciable catch of 1,00,179 t of oil sardine in 2007. The boom in oil sardine landings has led to the establishment of a new fish meal plant at Baithkol landing centre of Karwar which became functional in March, 2008 (Fig. 1). The Karnataka Fisheries Development Board has leased out the fish meal plant to a private company, Sai Annapoorna Bio-Protein Private Ltd. The products manufactured by the fish meal plant are fish oil and fish meal powder. They supply fish oil to CP Aquamarine which exports the fish oil to

south-east Asian countries such as Vietnam and Thailand. The fish meal powder is used as prawn feed and it is procured and marketed by CP Aquamarine. The company procures fish from Mangalore to Goa from boat owners and agents. The average supply of fish is 200 t/day. The company processes only oil sardine (*Sardinella longiceps*) for the manufacture of fish meal and fish oil.

The average production of fish meal per day is 35-40 t and the average production of fish oil per day is 600 l. The company employs a total manpower



Fig.1. View of the new fish meal and fish oil processing plant at Baithkol



Fig. 2. Fish being shoved inside the fish tank and sucked into the boiler



Fig. 3. Fish being boiled inside the boilers



Fig. 6. Fish meal powder

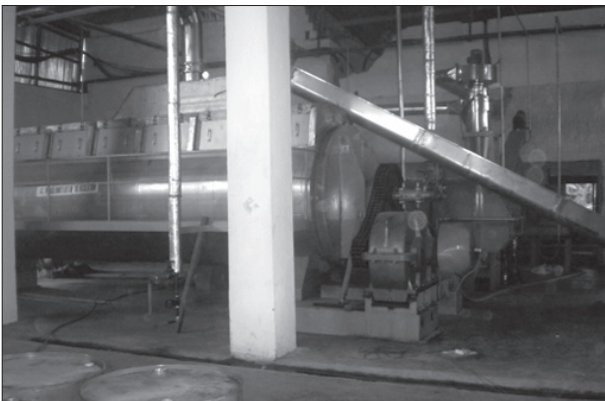


Fig. 4. Boiled fish being sent to cooker and then presser by automatic conveyor



Fig. 7. Fish oil extraction machine

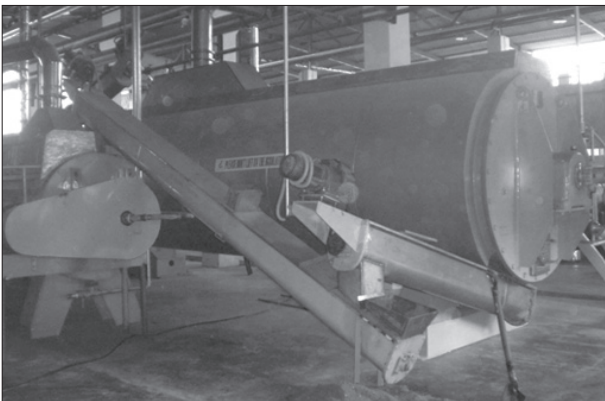


Fig. 5. Fish converted into powder for fish meal



Fig. 8. Fish oil being packed in sealed drums

of 80 personnel consisting of 40 workers in the technical cadre and 40 labourers. The manpower employed in this company consists of local people. The wages of the labourers range from Rs. 1,800 to 2,000/month and that of technical personnel is Rs. 6,000/month.

The fish is first fed inside the fish tanks by shoving

them manually. From the fish tank, it is sucked inside the boiler where it is boiled (Fig. 2 & 3). From there it goes to the cooker through the automatic conveyor. The cooked fish goes to the presser wherein fish for fish meal and the oil for fish oil are separated (Fig. 4). The fresh fish meal goes to the dryer and from there to the cooling and chilling plant. From the

chilling plant it goes to the grinder where it is ground to fine powder, subsequently to the sieve and then for packing (Fig. 5 & 6).

The fish oil is extracted from the oil extraction machine and then goes to the drums for packing (Fig. 7 & 8).

An unusual landing of whale shark *Rhincodon typus* along Blangad beach, Kerala

K. G. Baby

Central Marine Fisheries Research Institute, Cochin

On 03-03-2008, a whale shark (*Rhincodon typus*) locally known as 'Pullisravu', was caught alive in the motorized drift net at Blangad landing center in Thrissur District, Kerala. The drift net was operated at a depth of 30 m off Blangad landing center. The whale shark was lying dead for a day in the sea shore and the same was dropped into the sea by fishermen as there was nobody to take it by auction.

The measurements of the species landed is given below:

Length	515 cm.
Width	87 cm.
Weight	500 Kg.



Rhincodon typus landed at Blangad beach