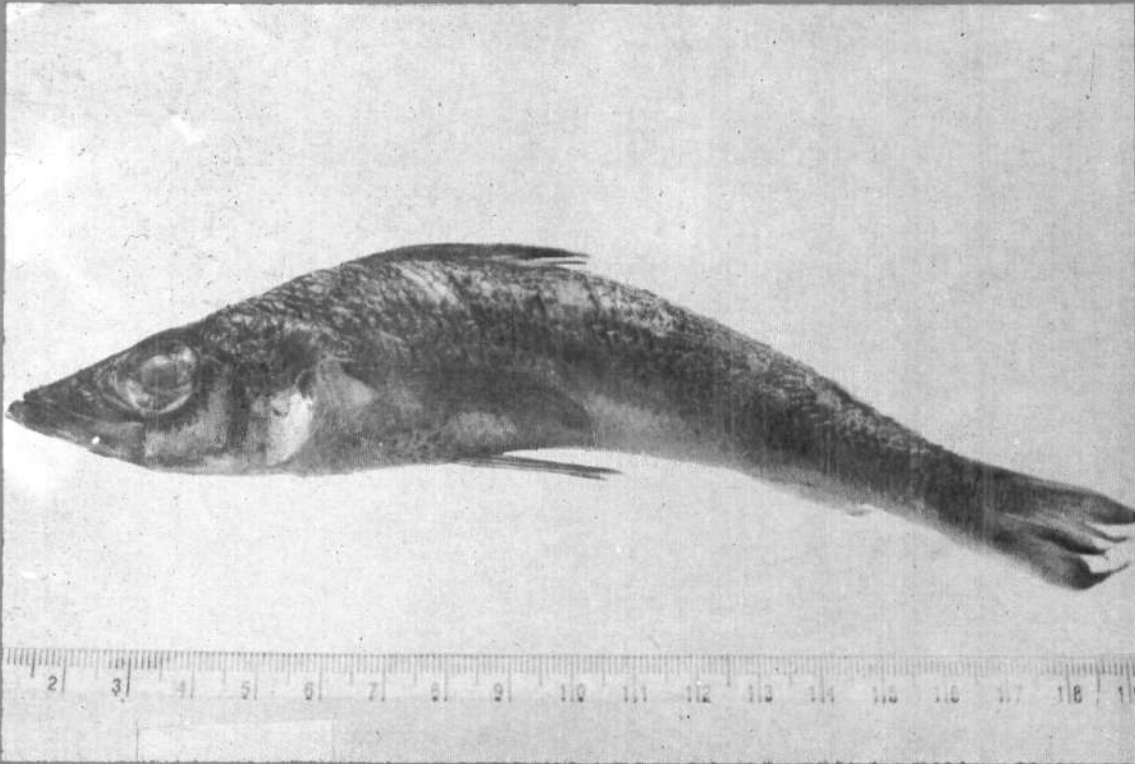




# समुद्री मात्स्यकी सूचना सेवा MARINE FISHERIES INFORMATION SERVICE

No. 140

NOVEMBER - DECEMBER 1995



तकनीकी एवं विस्तार अंकावली TECHNICAL AND EXTENSION SERIES

केन्द्रीय समुद्री मात्स्यकी अनुसंधान संस्थान  
कोचिन, भारत CENTRAL MARINE FISHERIES RESEARCH INSTITUTE  
COCHIN, INDIA

भारतीय कृषि अनुसंधान परिषद  
INDIAN COUNCIL OF AGRICULTURAL RESEARCH

## On a Leather back turtle *Dermochelys coriacea* landed at Rameswaram\*

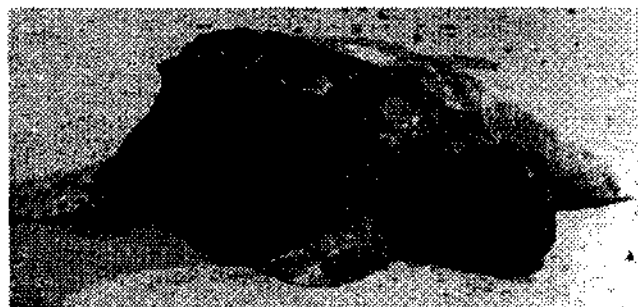


Fig. 1. The leather back turtle *Dermochelys coriacea* (Linnaeus) landed at Rameswaram.

A leather back turtle was washed ashore on 10-3-1991 about 2 km from the Rameswaram temple, Ramnad District, Tamil Nadu. Local enquiries revealed that it was caught on 7-3-1991 at 0200 hrs by a mechanised boat which operated shrimp trawl net in 15 m depth about 15 km southeast of Rameswaram. The turtle was identified as a female of *Dermochelys coriacea* (Linnaeus) which measured 174 cm in carapace length and weighed about 350 kg. The morphometric

measurements (in cm) of the leather back turtle is given below.

Total length	208
Carapace length	174
Carapace width	120
Flipper length	180
Head length	34

Of the five species of the sea turtles occurring in the Indian seas, the Leather back turtle *Dermochelys coriacea* popularly known as "Eluvari aamai" or "Thoni aamai" in Tamil is rare along the Indian coasts. Along the west coast the species was reported from Quilon (Cameron, 1923. *J. Bombay Nat. Hist. Soc.*, **29** (1) : 299-300), Calicut (Jones, 1959. *J. Bombay Nat. Hist. Soc.*, **56** (1) : 137-139.) and Malvan (Karbhari, *et al.* 1986 MFIS No. **70**. and along the east coast from Visakhapatnam (Dutt 1976 *Seafood Exp. Journ.*, **8** (8) :36.), Madras (Rajagopalan, 1985. MFIS No. **50** and Mandapam (Rao, *et al.*, 1989 MFIS, No. **95** and Pillai and Kasinathan, 1989. MFIS No. **102**).

---

\*Reported by S. Krishna Pillai, M.Badrudeen and Bose, Mandapam Regional Centre of CMFRI, Mandapam Camp - 623 520.