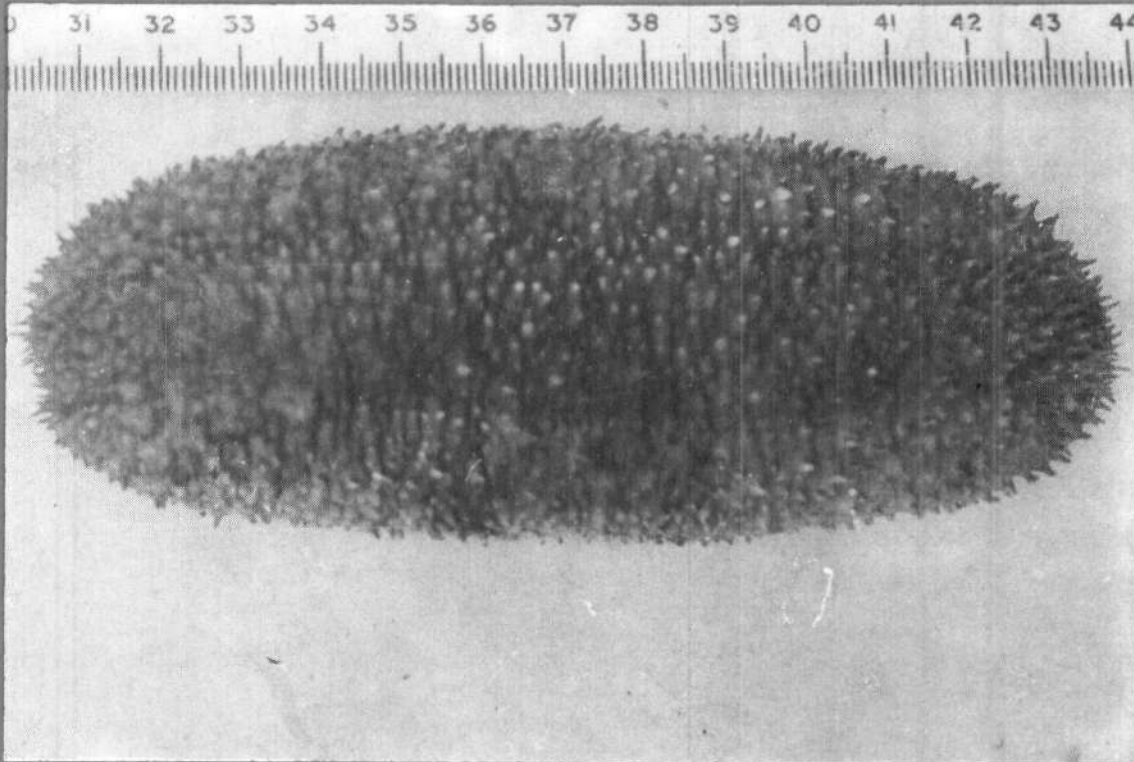




# समुद्री मात्स्यकी सूचना सेवा MARINE FISHERIES INFORMATION SERVICE

No. 137

APRIL - MAY 1995



तकनीकी एवं TECHNICAL AND  
विस्तार अंकावली EXTENSION SERIES

केन्द्रीय समुद्री मात्स्यकी CENTRAL MARINE FISHERIES  
अनुसंधान संस्थान RESEARCH INSTITUTE  
कोचिन, भारत COCHIN, INDIA

भारतीय कृषि अनुसंधान परिषद  
INDIAN COUNCIL OF AGRICULTURAL RESEARCH

## ON THE LARGEST SUNFISH *MASTURUS LANCEOLATUS* LEONARD RECORDED AT PERIAPATTINAM, GULF OF MANNAR\*

Sunfishes of the family Molidae are purely oceanic species of the warm and temperate seas having a restricted distribution. Though not common along the Indian coast, the occurrence of some of the species like *Ranzania truncata*, *R. typus*, *Mola mola*, *Masturus oxyropterus* and *M. lanceolatus* have been reported from Indian waters. Recently a sunfish *Masturus lanceolatus* measuring 1535 mm of total length has been reported from Tuticorin. (*Mar. Fish. Infor. Serv., T & E Ser.*, No. 128 : 16-17)

On 23.01.1994 a specimen of *Masturus lanceolatus* measuring 1830 mm was found floating in the sea and was brought to Periapattinam fish market. This fish was in fresh condition without any damage or injuries on the body. The body was oval in shape with dark grey colour and the skin was rough with minute denticles. The snout was rounded with a terminal mouth. The dorsal and anal fin lobes were entire and continuous with the caudal fin gradually tapering. The fins were almost dark to dark grey in colour. Incidentally, this was the largest sunfish species ever recorded from

the Indian waters. The important morphometric measurements taken are given in Table 1.

Since the flesh was soft and unpalatable, the fish was buried later.

TABLE 1. Morphometric measurements (in mm) of sunfish *Masturus lanceolatus* landed at Periapattinam

Total length.....	1830
Standard length.....	1542
Snout length.....	180
Head length.....	430
Height of body.....	870
Eye diameter.....	64
Height of dorsal fin.....	620
Height of anal fin.....	570
Height of pectoral fin.....	200
Length of eye to pectoral fin.....	230
Weight (approximate).....	75 kg

\*Reported by : M. Badrudeen, Mandapam Regional Centre of CMFRI, Mandapam Camp - 623 520.