

BIRD COMMUNITIES IN URBAN HABITAT: THE IMPORTANCE OF VEGETATION IN CITY SQUARES

COMUNIDADE DE AVES EM AMBIENTE URBANO: A IMPORTÂNCIA DA VEGETAÇÃO EM PRAÇAS

Hermes Willyan Parreira Claro
Universidade Estadual de Goiás (UEG)
hermeswillyanpc@gmail.com

Reile Ferreira Rossi
Universidade Estadual de Goiás (UEG)
reilerossi@yahoo.com.br

Wellington Hannibal Lopes
Universidade Estadual de Goiás (UEG)
wellingtonhannibal@gmail.com

Abstract: Urbanization changes the structure and composition of the environment, altering the quality and quantity of resources provided by it, thus affecting the richness and composition of birds. In this study, we investigated the relation of the bird communities and bird trophic guilds with a gradient of plant structure in an urban area, in the southern Goiás state, Brazil. We surveyed bird communities in ten city squares of Quirinópolis, between months March and October 2013. We found 62 bird species distributed in 24 families, being omnivores ($n = 20$ spp.) and insectivores ($n = 18$ spp.) comprised the most richness trophic guilds. For plant structure, we found 754 plant individuals, distributed in 17 families with 37 species. Bird composition and the richness of frugivorous species were relationship with the gradient of plant richness in city squares. While, the abundance of omnivorous and granivorous species were related by the gradient of plant abundance. We conclude that different aspect of vegetation structure are essential to harbor a rich and diverse bird community in city squares. We highlighted that programs of afforestation should consider the diversity of plant species.

Key words: Urban area. Trophic guilds. Bird composition. Species richness.

Resumo: A urbanização modifica a estrutura e a composição do ambiente, alterando a qualidade e a quantidade dos recursos que são providos pelo mesmo, afetando, dessa forma, a riqueza e a composição de aves. Neste estudo nós testamos a relação da comunidade de aves e das guildas tróficas com a estrutura vegetacional em uma área urbana no sul de Goiás, Brasil. A coleta de dados ocorreu entre março e outubro de 2013, durante dez dias consecutivos em dez praças e um esforço amostral de 25 horas em cada. Nós registramos 62 espécies de aves distribuídas em 51 gêneros e 24 famílias. As categorias tróficas mais representativas foram onívoras ($n = 20$) e insetívoros ($n = 18$). Nas praças nós encontramos 754 plantas, distribuídas em 37 espécies e 17 famílias. Não foi encontrada associação da abundância e riqueza de aves com a abundância e riqueza de plantas. A riqueza de plantas explicou a composição de aves. A riqueza de frugívoros foi dependente da riqueza de plantas, enquanto que a abundância de onívoros e granívoros foi dependente da abundância de plantas. Nectarívoros, insetívoros e carnívoros não obtiveram resultados significantes. Baseado em nosso estudo, nós sugerimos a implementação de programas de arborização com vegetação nativa em praças, ruas e avenidas, permitindo que a vegetação (arbustos, ervas e flores) propaguem-se em áreas restritas a pedestres.

Palavras-chave: Área urbana. Guildas tróficas. Composição de aves. Riqueza de espécies.

Introduction

The urbanization process modifies the physical and biotic structure of the habitat, providing different conditions and resources to bird communities that will occur in this new environment (MENDONÇA; ANJOS, 2000). This modification can reduce the habitat quality, affecting bird structures in different ways, such as, decreasing the richness of forest specialist-species and increasing the abundance of synanthropic bird species (MCKINNEY, 2006; ORTEGA-ÁLVAREZ; MACGREGOR-FORS, 2009). In this scenario, urban green areas become an important refuge for sensitive species (GODDARD et al., 2010). Further, the bird composition in urban environment are highly dependent on the spatial distribution of green areas, causing a non-uniformity in the bird assemblage (WHITE et al., 2005). Thus, habitat urbanization affect the structure and composition of bird communities.

Vegetation structures (e.g. native vegetation patch size, shrub and tree species richness, tree height and canopy cover) have been positively associated to urban bird species richness and abundances (CHACE; WALSH, 2006; MACGREGOR-FORS, 2008). The vegetation structure of urban areas also affect the trophic guilds of birds, for example nectarivorous and frugivorous bird species that occur in places with low degree of anthropization (ORTEGA-ÁLVAREZ; MACGREGOR-FORS, 2009), have a narrow gradient of food resource to exploit in this environments (BONIER et al, 2007; MENDONÇA; ANJOS, 2005; PAUW; LOUW, 2012). On contrary, omnivorous and granivorous bird species, tolerant to disturbed areas, are less affected by habitat urbanization (BLAIR, 1996). These species can exploit a wide food resource gradient, increasing in abundance in places with high food resource availability (SHOCHAT, 2004), and areas with higher degree of anthropization (ORTEGA-ÁLVAREZ; MACGREGOR-FORS, 2009). Nevertheless, bird community and its trophic guild have been poorly investigated about the of vegetation structure gradient in city squares.

In this study, we investigated how bird communities and bird trophic guild respond to a gradient of vegetation structure in an urban area in southern Goiás state, Brazil. Our question are: i) does the bird structure and composition change across gradients of vegetation structure (e.g. plant abundance and plant richness)? ii) How trophic guild of birds response to vegetation structure in city squares? We hypothesized that: i) the abundance, richness and composition of birds will be positively related to the abundance and richness of plant species

in city squares; and that ii) the abundance and richness of trophic guild also will be positively related to the abundance and richness, respectively of plant communities.

Material and methods

Study area

We surveyed birds in 10 city square in the municipality of Quirinópolis, southern Goiás state, Brazil (Figure 1). The city cover a 3,789.084 km² area, with a human population of 49.416 inhabitants (IBGE, 2019). The climate is Tropical with dry winter (Aw, according Köppen classification) markedly seasonal, observed in almost all state of Goiás where rainfall is between 1,600 to 1,900 mm, and annual mean temperature between 19 to 20 °C (ALVARES et al., 2014).

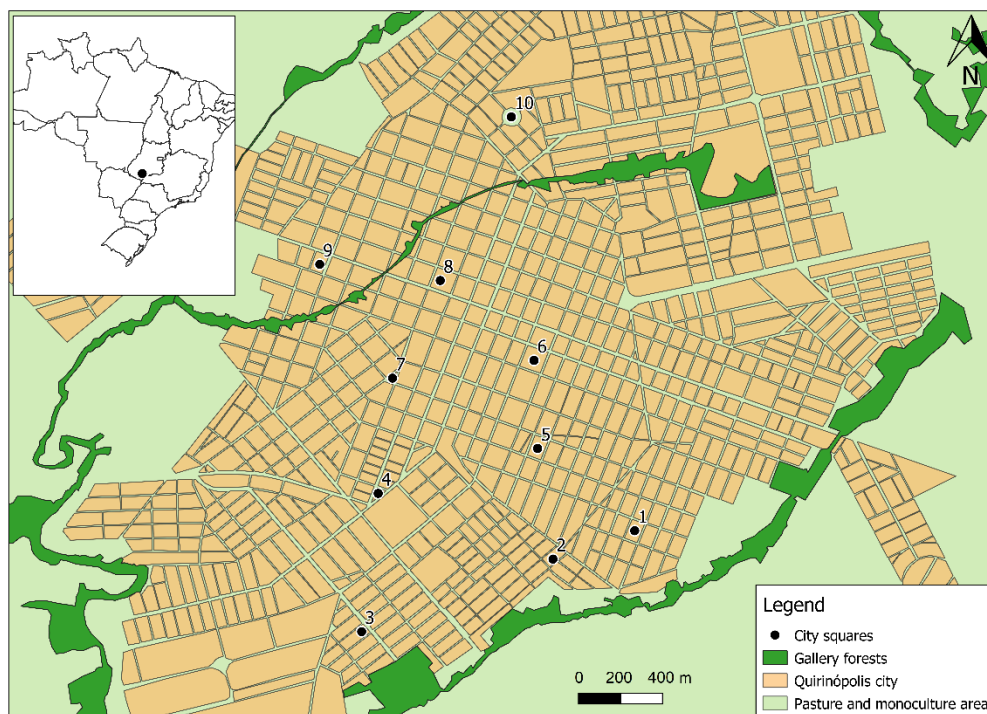


Figure 1: Location of the municipality of Quirinópolis, southern Goiás, Brazil and the 10 city squares marked along urban area. The green colours show the gallery forests along of the city.

Bird surveys

We surveyed bird community monthly between March and October 2013, during ten consecutive days (7 days: 6:30 to 9:00 h and 3 days: 16:00 to 18:30 h), adding a sample effort of 25 hours for each city square. We used binoculars 10x40 for observe and record bird species. We used personal observation and scientific literature (MOTTA-JÚNIOR, 1990; SICK, 1997; TELES; DIAS, 2010) for allocated each species according its trophic guild. For taxonomic classification, we followed Piacentini et al. (2015).

Vegetation structure

We used abundance and richness of plant communities for evaluate vegetation structure on each city squares. For this, we count number of tree and shrub species, and its taxonomic classification, following APG III system for angiosperms (FLORA DO BRASIL, 2020; LORENZI; SOUZA, 2001; LORENZI, 2009; MBOT, 2019; SOUZA et al, 2013). For some species, leaves, fruits, and flowers were collected to taxonomic classification, and voucher on Herbarium José Ângelo Rizzo (HERBJAR) of the Universidade Estadual de Goiás, Câmpus Sudoeste.

Data analyses

To investigate if our sampling effort was sufficient to represent the bird community in urban area of Quirinópolis city, we made a sample-based estimates using Jackknife 1 through the function *specpool* of the R package *vegan* (OKSANEN et al, 2018). Before comparison, we test the auto-correlation between abundance and richness of plant species using Pearson's linear correlation analysis ($\rho = 0.35$, $df = 8$, $P = 0.32$). Therefore, we test the relation between abundance and richness of birds with abundance and richness of plant community, respectively, using the linear regression analyses. To ordinate bird species composition in the city squares, we applied a Non-Metric Multidimensional Scaling (NMDS) analysis, supported by the Jaccard similarity index, considering a maximum stress of 0.2. We used the "envifit" function (R package *vegan*, OKSANEN et al. 2018) to test the relationship between the NMDS axes (response variable: species composition) and the abundance and richness of the plant communities (predictor variables). For investigate the association between trophic guild with plant structure, we compared abundance and richness of frugivore, granivore, insectivore, and omnivores species with abundance and richness of plant by the linear regression. All analyses were conducted in R Program (R CORE TEAM, 2018).

Results

We recorded 2.733 contacts with birds, distributed in 62 bird species (six migratory habit), 51 genera and 24 families (Appendix I). Our sampling covered about 82.1% of the estimated richness by jackknife 1 = 75.5 species. *Crotophaga ani*, *Eupetomena macroura*, *Passer domesticus*, *Patagioenas picazuro* and *Pitangus sulphuratus* were registered in all city squares, and were the most abundant (higher number of contacts). We found six bird trophic guild on city squares: omnivores 32% (20 spp.), insectivores 29% (18 spp.), frugivorous 15% (9 spp.), granivores 11% (7 spp.), nectarivores 8% (5 spp.), and carnivores 5% (3 spp.). The most abundant trophic guilds were omnivores and frugivorous with 1,058 and 730 contacts, respectively (Appendix I). In all city squares, we recorded 754 arboreal plant individuals, distributed in 37 plant species, belonging to 17 family.

We didn't find any evidence of association of abundance and richness of birds with the abundance and richness of plants (Table 1).

Table 1: Results of linear regression between bird community structure and trophic guilds (response variable) with abundance and richness of plants (predictor variables) recorded in ten city squares in the Quirinópolis municipality, southern Goiás, Brazil.

Response	Predictor	R ² _{adj.}	t-value	P
Bird abundance	Plant abundance	0.30	2.19	0.06
Bird richness	Plant richness	0.23	1.94	0.08
Bird composition	Plant abundance	0.36	permutation	0.23
Bird composition	Plant richness	0.61	permutation	0.03*
Frugivore abundance	Plant abundance	0.12	1.49	0.17
Frugivore richness	Plant richness	0.45	2.84	0.02*
Gramnivore abundance	Plant abundance	0.35	2.42	0.04*
Gramnivore richness	Plant richness	0.09	1.40	0.20
Insectivore abundance	Plant abundance	0.05	1.21	0.26
Insectivore richness	Plant richness	0.01	0.28	0.78
Omnivore abundance	Plant abundance	0.38	2.56	0.03*
Omnivore richness	Plant richness	0.26	2.04	0.07

* Statistic significant value $p < 0.05$. Number of permutations: 999

The NMDS analysis of the composition of the bird communities was considered adequate, with a stress of 0.06. However, only plant species richness was associated with first NMDS axis, explaining bird composition ordination ($R^2_{adj.} = 0.61$, $P = 0.03$, Figure 2).

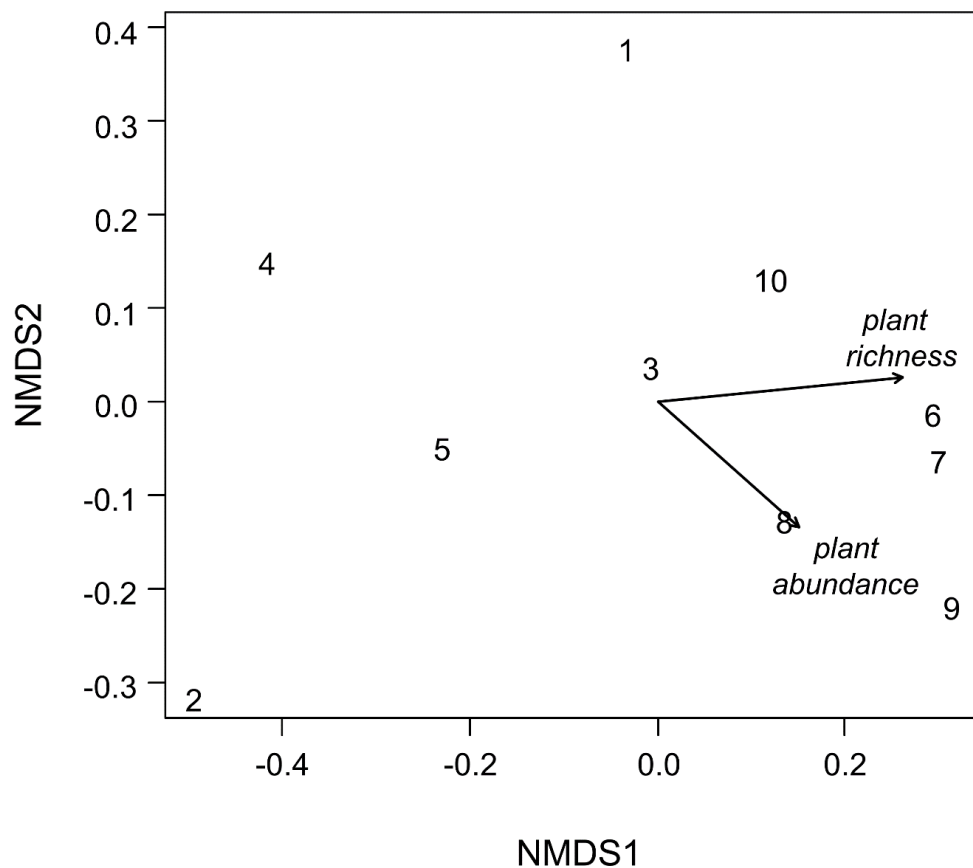


Figure 2: Non-Metric Multidimensional Scaling of the similarity (Jaccard) between the bird communities in ten city squares (numbers inside plot) in Quirinópolis municipality, southern Goiás, Brazil. Arrow represent predictor variables abundance and richness of plant communities measured in the city squares.

Focus on trophic guilds, we found significant association only between richness of frugivorous with plant richness ($R^2_{adj.} = 0.45$, $t = 2.86$, $p = 0.02$), abundance of granivorous with plant abundance ($R^2_{adj.} = 0.35$, $t = 2.42$, $p = 0.04$), and abundance of omnivorous with plant abundance ($R^2_{adj.} = 0.38$, $t = 2.56$, $p = 0.03$, Figure 3). All others association between trophic guilds with abundance and richness of plants were not significant (Table 1).

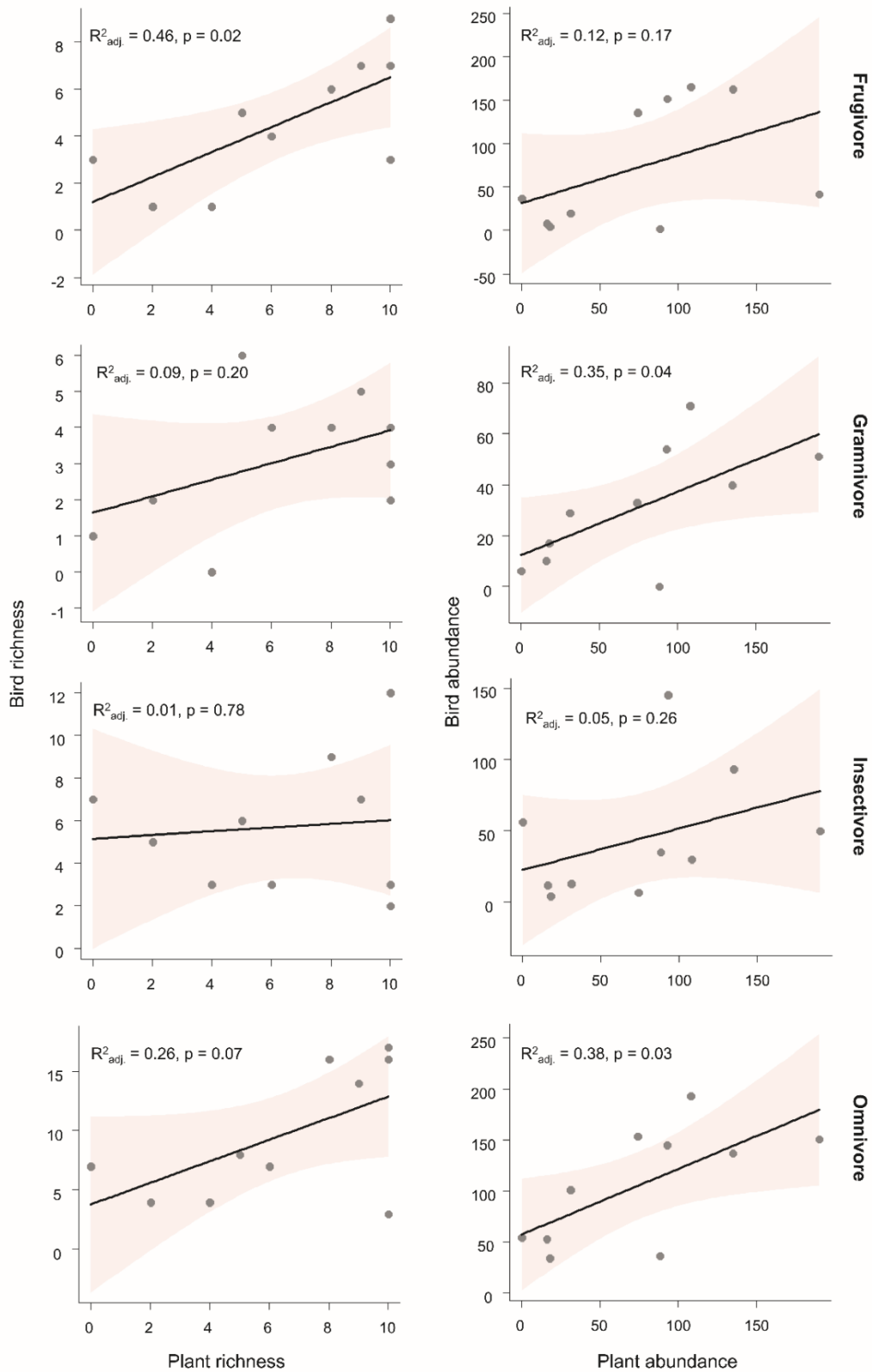


Figure 3: Relation between richness and abundance of bird guilds (frugivore, grammivore, insectivore and omnivore) with richness and abundance of plant in ten city squares in Quirinópolis municipality, southern Goiás, Brazil.

Discussion

We found a representative bird community expected to occur in urban area of Quirinópolis municipality, southern Goiás state, central Brazil. The patterns in abundance of generalist species like *C. ani*, *E. macroura*, *P. domesticus*, *P. picazuro* and *P. sulphuratus*, and the species richness in omnivores and insectivores trophic guilds already are expected in urban areas (CRUZ; PIRATELLI, 2011; FRANCHIN; MARÇAL-JUNIOR, 2004; LEVEAU; LEVEAU, 2004; MATARAZZO-NEUBERGER, 1995; RODRIGUES et al, 2018; SCHERER et al, 2005; TELES et al, 2012), being described as an effect of urbanization (CHACE; WALSH 2006). Considering ours hypotheses, for the component of bird community in urban areas, only the composition was associated to plant richness, and for the trophic guilds components, the richness of frugivorous was associated to plant richness and the abundances of granivorous and omnivorous were associated to plant abundances. We discussed below these patterns and the mechanism that could determine them.

The association between bird composition to plant richness could indicated a specific relationship between bird communities to the gradient of plant species richness, with one part of bird community occurring in city squares with higher plant richness, and another part of community occurring in the gradient with lower plant richness. This pattern differ of the reported in the scientific literature, for example, in Paris city, the spatial distribution of city squares, or the level of urbanization in the surrounding, was more important for determining bird community composition than vegetation structure (HUSTÉ; BOULINIER, 2011).

The relation between frugivorous bird species with plant richness can be explained for the higher number of fruited ornamental plants (e.g. palms) in the Quirinópolis city squares, which may be benefiting some frugivorous species, a behavior commonly observed in other urban areas (REICHARD et al., 2001). Further, species more specialist like frugivorous tend to be more common on urban forest remnants, which are rich in food resource in cities (BONIER et al., 2007). For example, on the temperate secondary forest of the Cantabrian Range (north Spain) the frugivorous bird species richness was positively correlated with the quantity and variety of seeds dispersed by birds (GARCIA; MARTINEZ, 2012). The abundance of omnivorous and granivorous were dependent of plant abundances. This result is unexpected, considering that species of these groups are abundant in residential areas independent of green areas (ORTEGA-ALVAREZ; MACGREGOR-FORS, 2009).

Habitat degradation can contribute to predation rate (EVANS, 2004), in this sense, the plant abundance could be used for to reduce this interaction by improving crypsis (WHITTINGHAM; EVANS, 2004). In urban areas, the influence of human traffic and domesticated animal affected bird survival (KARK et al, 2007; LIM; SODHI, 2004), then, urban green areas comprise place where human disturbance is lower compared to other urban land-uses (DEVICTOR et al, 2008).

Our study provided an exploratory look on the responses of bird guilds with relation the urbanization process. The bird community of Quirinópolis city exhibit a higher number of generalist species and a lower number of specialist-species, a common pattern in urban areas. These results can be reflex of the lower quality and heterogeneity of urban areas of Quirinópolis, which has streets and avenues little wooded and city-squares with a little representative plant species. City square are designed primarily for the benefit of humans, thus, the presence of birds and vegetation contribute to human-welfare, beside to provide an opportunity to learn about the wildlife. Therefore, actions to promote the increase bird diversity in urban areas should be applied in all cities.

References

ALVARES, C. A.; STAPE, J. L.; SENTELHAS, P. C.; GONÇALVES, J. L. M.; SPAROVEK, G. Köppen's climate classification map for Brazil. **Metereologische Zeitschrift**, v. 22, n. 6, p. 711-728, janeiro de 2014.

ARGEL-DE-OLIVEIRA, M.M. Aves e vegetação em um bairro residencial da cidade de São Paulo (São Paulo, Brasil). **Rev. Bras. Zool.**, v. 12, n. 1, p. 110-116, 1995.

BHULLAR, S.; MAJER, J. Arthropods on street trees: a food resource for wildlife. **Pacific Conservation Biology**, n. 6, p. 171-173, 2000.

BLAIR, R.B. Land use and avian species diversity along an urban gradient. **Ecological Applications**, v. 6, n. 2, p. 506-519, nov./jun. 1996.

BONIER, F.; MARTIN, P.R.; WINGFIELD, J.C. Urban birds have broader environmental tolerance. **Biology Letters**, n. 3, p. 670-673, jul./ago. 2007.

CHACE, J.F.; WALSH, J.J. Urban effects on native avifauna: a review. **Landscape and Urban Planning**, v. 74, p. 46-69, ago./nov. 2006.

CRUZ, B.B.; PIRATELLI, A.J. Avifauna associada a um trecho urbano do Rio Sorocaba, Sudeste do Brasil. **Biota Neotropical**, v. 11, n. 4, p. 255-264, fev./dez. 2011.

DEVICTOR, V.; JULLIARD, R.; CLAVEL, J.; JIGUET, F.; LEE, A.; COUVET, D. 2008. Functional biotic homogenization of bird communities in disturbed landscapes. **Global Ecology and Biogeography**, n. 17, p. 252-261, 2008.

EVANS, K.L. The potential for interactions between predation and habitat change to cause population declines of farmland birds. **Ibis**, n. 146, p. 1-13, 2004.

FLORA DO BRASIL 2020 EM CONSTRUÇÃO. **Jardim Botânico do Rio de Janeiro**. Disponível em: <http://reflora.jbrj.gov.br/reflora/PrincipalUC/PrincipalUC.do>. Acesso em: 07 de março de 2019.

FRANCHIN, A.G.; MARÇAL-JUNIOR, O. A riqueza da avifauna no Parque Municipal do Sabiá, zona urbana de Uberlândia (MG). **Biotemas**, v. 17, n. 1, p. 179-202, novembro de 2004.

GARCIA, D. & MARTINEZ, D. Species richness matters for the quality of ecosystem services: a test using seed dispersal by frugivorous birds. **Proceedings of the Royal Society B**, n. 279, p. 3106-3113, jan./mar. 2012.

GODDARD, M.A.; DOUGILL, A.J.; BENTON, T.G. Scaling up from gardens: biodiversity conservation in urban environments. **Trends in Ecology and Evolution**, v. 25, n. 2, p. 90-98, fevereiro de 2010.

HUSTÉ, A.; BOULINIER, T. Determinants of Bird community composition on patches in the suburbs of Paris, France. **Biological Conservation**, n. 144, p. 243-252, ago./set. 2011.

INSTITUTO BRASILEIRO DE GEOGRAFIA E ESTATÍSTICA – IBGE. **Infográficos: dados gerais do município**. Disponível em: <https://cidades.ibge.gov.br/brasil/go/quirinopolis/panorama>. Acesso em: 07 de março de 2019.

KARK, S.; IWANIUK, A.; SCHALIMTZEK, A.; BANKER, E. Living in the city: can anyone become an ‘urban exploiter’?. **Journal of Biogeography**, n. 34, p. 638-651, dez./abr. 2007.

LEVEAU, L.M.; LEVEAU, C.M. Comunidades de aves em un gradiente urbano de la ciudad de Mar Del Plata, Argentina. **Homero**, v. 19, n. 1, p. 13-21, jan./ago. 2004.

LIM, H.C.; SODHI, N.S. Responses of avian guilds to urbanization in a tropical city. **Landscape and urban planning**, v. 6, n. 4, p. 199-215, jul./abr. 2004.

LORENZI, H.; SOUZA, H.M. **Plantas ornamentais no Brasil: arbustivas, herbáceas e trepadeiras**. 3ª edição. São Paulo: Plantarum, 1088 p. 2001.

LORENZI, H. **Árvores brasileiras: manual de identificação e cultivo de plantas arbóreas nativas do Brasil**. 2ª edição. São Paulo: Plantarum, 386 p. 2009.

MACGREGOR-FORS, I. Relation between habitat attributes and Bird richness in a western Mexico suburb. **Landscape and Urban Planning**, n. 84, p. 92-98, jun/ago. 2008.

MATARAZZO-NEUBERGER, W.M. Comunidade de aves de cinco parques e praças da

grande São Paulo, estado de São Paulo. **Ararajuba**, n. 3: p. 13-19, 1995.

MCKINNEY, M.L. Urbanization as a major cause of biotic homogenization. **Biological Conservation**, n. 127, p. 247-260, set./nov. 2006.

MENDONÇA-LIMA, A.; FONTANA, C.S. Composição, frequência e aspectos biológicos da avifauna no Porto Alegre Country Clube, Rio Grande do Sul. **Ararajuba**, v. 8, n. 1, p. 1-8, 2000.

MENDONÇA, L.B.; ANJOS, L. Beija-flores (Aves, Trochilidae) e seus recursos florais em uma área urbana do Sul do Brasil. **Revista Brasileira de Zoologia**, v. 22, n. 1, p. 51-59, março de 2005.

MISSOURI BOTANICAL GARDEN – MBOT. **Explore the beta release of web tropicos**. Disponível em: <http://www.tropicos.org/>. Acesso em: 07 de março de 2019.

MOTTA-JÚNIOR, J.C. Estrutura trófica e composição das avifaunas de três habitats terrestres na região central do estado de São Paulo. **Ararajuba**, n. 1, p. 65-71, 1990.

OKSANEN, J., BLANCHET, F.G., FRIENDLY, M., KINDT, R., LEGENDRE, P., MCGLINN, D., MINCHIN, P.R., O'HARA, R.B., SIMPSON, G.L., SOLYMOS, P., STEVENS, M.H.H., SZOECS, E., WAGNER, H. 2018. Package 'vegan'. Community Ecology Package. R package version 2.5-2 <https://CRAN.R-project.org/package=vegan>.

ORTEGA-ÁLVAREZ, R.; MACGREGOR-FORS, I. Living in the big city: effects of urban land-use on bird community structure, diversity, and composition. **Landscape and urban planning**, v. 90, p. 189-195, dezembro de 2009.

PARKER, Y.; YOM-TOV, Y.; ALON-MOZES, T.; BARNEA, A. The effect of plant richness and urban garden structure on bird species richness, diversity and community structure. **Landscape and Urban Planning**, n. 122, p. 186-195, novembro de 2014.

PAUW, A.; LOUW, K. Urbanization drives a reduction in functional diversity in a guild of nectar-feeding birds. **Ecology and Society**, v. 17, n. 2, p. 27, junho de 2012.

PIACENTINI, V.Q.; ALEIXO, A.; AGNE, C.E.; MAURICIO, G.N.; PACHECO, J.F.; BRAVO, G.A.; BRITO, G.R.R.; NAKA, L.N.; OLMOS, F.; POSSO, S.; SILVEIRA, L.F.; BETINI, G.S.; CARRANO, E.; FRANZ, I.; LEES, A.C.; LIMA, L.M.; PIOLI, D.; SCHUNCK, F.; AMARAL, F.R.; BENCKE, G.A.; COHN-HAFT, M.; FIGUEIREDO, L.F.A.; STRAUBE, F.C.; CESARI, E. Annotated checklist of the birds of Brazil by the Brazilian Ornithological Records Committee/Lista comentada das aves do Brasil pelo Comitê Brasileiro de Registros Ornitológicos. **Revista Brasileira de Ornitologia**, v. 23, n. 2, p. 91-298, junho de 2015.

PIVATTO, M. A. C.; BERNARDON, G. **Guia fotográfico: aves do pantanal**. São Paulo: Aves & fotos, 256 pp, 2012.

R CORE TEAM (2019). R: A language and environment for statistical computing. R Foundation for Statistical Computing, Vienna, Austria. URL <http://www.R-project.org/>.

REICHARD, S.H., CHALKER-SCOTT, L. & BUCHANAN, S. 2001. Interactions among non-native plants and birds. In: Marzluff J.M., Bowman R., Donnelly R. (eds) *Avian Ecology and Conservation in an Urbanizing World*. Springer, Boston, MA.

SACCO, A.G.; BERGMANN, F.B.; RUI, A.M. Assembleia de aves na área urbana do município de Pelotas, Rio Grande do Sul, Brasil. ***Biota Neotropica***, v. 13, n. 2, p. 153-162, abril de 2013.

SCHERER, A.; SCHERER, S.B.; BUGONI, L.; MOHR, L.V.; EFE, M.A.; HARTZ, S.M. Estrutura trófica da avifauna em oito parques da cidade de Porto Alegre, Rio Grande do Sul, Brasil. ***Ornithologia***, v. 1, n. 1, p. 25-32, junho de 2005.

SHOCHAT, E. Credit or debit? Resource input changes population dynamics of city-slicker birds. ***Oikos***, n. 106, p. 622-626, 2004.

SICK, H. ***Ornithologia Brasileira***. Rio de Janeiro: Editora Nova Fronteira, 1997.

SOUZA, V.C.; FLORES, T.B.; LORENZI, H. ***Introdução à botânica: morfologia***. São Paulo: Instituto Plantarum de Estudos da Flora, 2013.

TELES, A.S.; M.M. DIAS. Bird communities in two fragments of Cerrado in Itirapina, Brazil. ***Brazilian Journal of Biology***, v. 70, n. 3, p. 537-550, agosto de 2010.

TELES, A.S.; BLAMIRE, D.; REIS, E.S. Comunidade de aves no clube recreativo da Saneago em Iporá, Estado de Goiás. ***Biotemas***, v. 25, n. 3, p. 195-204, setembro de 2012.

WHITE, J.G.; ANTOS, M.J.; FITZSIMONS, J.A.; PALMER, G.C. Non-uniform Bird assemblages in urban environments: the influence of streetscape vegetation. ***Landscape and urban planning***, n. 71, p. 123-135, fevereiro de 2005.

WHITTINGHAM, M.J.; EVANS, K.L. The effect of habitat structure on predation risk of birds in agricultural landscapes. ***Ibis***, n. 146, p. 210-220, 2004.

Appendix I. Recorded bird species. Scientific names and taxonomic sequence follow Piacentini et al. (2015). Study area: (1) Praça da Bíblia, (2) Praça Cícero Joaquim de Medeiros, (3) Praça dos Perus, (4) Praça Célio Moraes Andrade, (5) Praça do Circo, (6) Praça dos Três Poderes, (7) Praça das Crianças, (8) Praça José Ferreira de Jesus, (9) Praça Coronel Jacinto Honório, (10) Praça Airosa Martins Parreira. Feeding habits (F.H): (ONI) omnivorous, (CAR) carnivorous, (FRU) frugivorous, (INS) insectivorous, (GRA) granivorous, (NEC) nectarivorous.

Family	Specie	Study area	F.H.	Contact**
Accipitridae	<i>Rupornis magnirostris</i> (Gmelin, 1788)	9	CAR	1
Charadriidae	<i>Vanellus chilensis</i> (Molina, 1782)	1, 2, 3, 4, 5, 8, 10	ONI	58
Columbidae	<i>Columbina talpacoti</i> (Temminck, 1810)	1, 3, 6, 7, 8, 9, 10	GRA	100
	<i>Columbina squammata</i> (Lesson, 1831)	10	GRA	1
	<i>Columba livia</i> Gmelin, 1789	6	GRA	21
	<i>Patagioenas picazuro</i> (Temminck, 1813)	1, 3, 4, 5, 6, 7, 8, 9, 10	FRU	159
	<i>Patagioenas cayennensis</i> (Bonnaterre, 1792)	1, 3, 5, 6, 7, 8, 9, 10	FRU	125
	<i>Patagioenas plumbea</i> (Vieillot, 1818)	9	FRU	1
	<i>Zenaida auriculata</i> (Des Murs, 1847)	1, 3, 4, 5, 6, 7, 8, 10	GRA	89
Cuculidae	<i>Crotophaga ani</i> Linnaeus, 1758	2, 3, 4, 5, 6, 7, 8, 9, 10	INS	124
	<i>Guira guira</i> (Gmelin, 1788)	1, 2, 3, 5, 6, 8, 9, 10	INS	67
Strigidae	<i>Glaucidium brasilianum</i> (Gmelin, 1788)	6	CAR	1
	<i>Athene cunicularia</i> (Molina, 1782)	2, 5, 8	INS	24
Caprimulgidae	<i>Podager nacunda</i> (Vieillot, 1817)	5	INS	1
Trochilidae	<i>Phaethornis pretrei</i> (Lesson & Delattre, 1839)	1	NEC	1
	<i>Eupetomena macroura</i> (Gmelin, 1788)	1, 2, 3, 4, 5, 6, 7, 8, 9, 10	NEC	74
	<i>Chlorostilbon lucidus</i> (Shaw, 1812)	1, 3, 6, 7, 8, 9, 10	NEC	52
	<i>Thalurania furcata</i> (Gmelin, 1788)	10	NEC	2
Momotidae	<i>Momotus momota</i> (Linnaeus, 1766)	6, 7, 9	ONI	7
Ramphastidae	<i>Ramphastos toco</i> Statius Muller, 1776	6, 7, 8, 9	ONI	22
	<i>Pteroglossus castanotis</i> Gould, 1834	8, 9	ONI	6
Picidae	<i>Colaptes melanochloros</i> (Gmelin, 1788)	9	INS	1
Falconidae	<i>Falco sparverius</i> Linnaeus, 1758	3, 4, 5, 10	CAR	12
Psittacidae	<i>Ara ararauna</i> (Linnaeus, 1758)	6, 7, 9	FRU	30
	<i>Diopsittaca nobilis</i> (Linnaeus, 1758)	6, 7, 8, 9, 10	FRU	56
	<i>Psittacara leucophthalmus</i> (Statius Muller, 1776)	5, 6, 7, 8, 9, 10	FRU	68
	<i>Eupsittula aurea</i> (Gmelin, 1788)	2, 3, 6, 7, 8, 9	FRU	59
	<i>Brotogeris chiriri</i> (Vieillot, 1818)	1, 3, 6, 7, 8, 9, 10	FRU	230
Thamnophilidae	<i>Herpsilochmus longirostris</i> Pelzeln, 1868	9	INS	4
	<i>Thamnophilus doliatus</i> (Linnaeus, 1764)	6, 7	INS	3
	<i>Thamnophilus pelzelni</i> Hellmayr, 1924	9	INS	2
Rhynchocyclidae	<i>Todirostrum cinereum</i> (Linnaeus, 1766)	8, 9	INS	15

Tyrannidae	<i>Pitangus sulphuratus</i> (Linnaeus, 1766)	2, 3, 4, 5, 6, 7, 8, 9, 10	ONI	122
	<i>Machetornis rixosa</i> (Vieillot, 1819)	4, 6, 8, 9, 10	INS	43
	<i>Myiodynastes maculatus</i> (Statius Muller, 1776) *	6, 7, 8, 9, 10	ONI	20
	<i>Megarynchus pitangua</i> (Linnaeus, 1766)	6, 7, 9	ONI	6
	<i>Tyrannus albogularis</i> Burmeister, 1856 *	4, 6	INS	2
	<i>Tyrannus melancholicus</i> Vieillot, 1819	3, 4, 5, 6, 7, 8, 9, 10	INS	84
	<i>Tyrannus savana</i> Daudin, 1802 *	1, 5, 8, 9	INS	13
	<i>Griseotyrannus aurantioatrocristatus</i> (d'Orbigny & Lafresnaye, 1837) *	5, 7, 8	ONI	8
	<i>Pyrocephalus rubinus</i> (Boddaert, 1783) *	6, 10	INS	3
	<i>Xolmis cinereus</i> (Vieillot, 1816) *	4, 5, 8, 9	INS	10
Hirundinidae	<i>Progne tapera</i> (Vieillot, 1817)	9	INS	11
	<i>Progne chalybea</i> (Gmelin, 1789)	8, 9	INS	37
Turdidae	<i>Turdus leucomelas</i> Vieillot, 1818	6, 7, 8, 9	ONI	24
	<i>Turdus rufiventris</i> Vieillot, 1818	6, 7, 8, 9	ONI	26
	<i>Turdus amaurochalinus</i> Cabanis, 1850	6, 7, 8, 9	ONI	10
Mimidae	<i>Mimus saturninus</i> (Lichtenstein, 1823)	4, 5, 10	ONI	12
Icteridae	<i>Icterus cayanensis</i> (Linnaeus, 1766)	3, 6, 7, 8, 9	ONI	32
	<i>Gnorimopsar chopi</i> (Vieillot, 1819)	7	ONI	1
	<i>Molothrus bonariensis</i> (Gmelin, 1789)	2, 3, 5, 6, 7, 8, 9, 10	ONI	61
Thraupidae	<i>Tangara sayaca</i> (Linnaeus, 1766)	1, 3, 5, 6, 7, 8, 9, 10	ONI	81
	<i>Tangara palmarum</i> (Wied, 1821)	6, 7, 8, 9	ONI	58
	<i>Tangara cayana</i> (Linnaeus, 1766)	7, 9	ONI	10
	<i>Sicalis flaveola</i> (Linnaeus, 1766)	1, 3, 4, 6, 7, 8, 9, 10	GRA	85
	<i>Volatinia jacarina</i> (Linnaeus, 1766)	3, 7, 8, 10	GRA	9
	<i>Cyanerpes cyaneus</i> (Linnaeus, 1766)	9	FRU	1
	<i>Coereba flaveola</i> (Linnaeus, 1758)	3, 6, 7, 8, 9, 10	NEC	47
	<i>Sporophila caerulea</i> (Vieillot, 1823)	6, 10	GRA	6
Fringillidae	<i>Euphonia chlorotica</i> (Linnaeus, 1766)	3, 6, 7, 8, 9, 10	ONI	30
Passeridae	<i>Passer domesticus</i> (Linnaeus, 1758)	1, 2, 3, 4, 5, 6, 7, 8, 9, 10	ONI	464

*Migratory species.

**Number of contacts that we had with birds.

SOBRE OS AUTORES

Hermes Willyan Parreira Claro

Graduado em Ciências Biológicas pela Universidade Estadual de Goiás (2013). Mestrando no Programa de Pós graduação stricto sensu em Ambiente e Sociedade, pela Universidade Estadual de Goiás, Campus Morrinhos. Atuou como bolsista PIBIC/UEG na área de microbiologia, com a linha de pesquisa voltada para nematoides da cultura da cana-de-açúcar. Tem experiência com manejo e captura de aves e pequenos mamíferos. É membro do grupo de pesquisa Biodiversidade e Conservação em Paisagens Fragmentadas (CNPq), e do Laboratório de Ecologia e Biogeografia de Mamíferos - LECOBIOMA. Atualmente está trabalhando com dieta de pequenos mamíferos não-voadores no sul de Goiás, com enfoque no aninhamento das comunidades.

Lattes: <http://lattes.cnpq.br/0539870966050411>

Reile Ferreira Rossi

Possui graduação em Ciências Licenciatura Plena em Biologia pela Universidade Estadual de Goiás (2001), Mestrado em Zoologia na Universidade de Brasília - UnB (2016), doutorando em Zoologia - UnB. Especialista em Ciências da Natureza - UnB e em Docência Universitária - UEG. É Docente de Ensino Superior Efetivo de Zoologia do Curso de Ciências Biológicas da Universidade Estadual de Goiás, Campus Quirinópolis. Professor Efetivo de Biologia da Secretaria de Estado de Educação, Cultura e Esportes de Goiás. Tem experiência na área de Zoologia, com ênfase em Conservação das Espécies Animais, realiza e orienta pesquisas sobre a Aves em paisagens fragmentadas no sul de Goiás, atuando principalmente nos seguintes temas: efeitos da fragmentação, conservação, biologia reprodutiva e levantamento da diversidade de aves. Membro da Sociedade Brasileira de Ornitologia. Tem registro no Conselho Regional de Biologia - CRBio 4 e cadastro no IBAMA/SISBIO. Voluntário na ONG Associação Galeatus.

Lattes: <http://lattes.cnpq.br/8636789579051341>

Wellington Hannibal Lopes

Biólogo, licenciado em Ciências Biológicas (UFMS, 2005), Mestre em Biodiversidade Animal (UFMS, 2007), Doutor em Ecologia e Conservação (UFMS, 2017). É professor da Universidade Estadual de Goiás. Foi Coordenador Adjunto de Pesquisa e Pós-Graduação do Câmpus Quirinópolis nos anos de 2018 e 2019. É autor do livro Mamíferos do Pantanal (2015), e organizador do livro Biodiversidade, Manejo e Conservação do Sul de Goiás (2017). É líder do grupo de pesquisa Biodiversidade e Conservação em Paisagens Fragmentadas (CNPq), e do Laboratório de Ecologia e Biogeografia de Mamíferos - LECOBIOMA. Pesquisador associado do Instituto Nacional de Ciência e Tecnologia em Ecologia, Evolução e Conservação da Biodiversidade (INCT-EECBio) e do grupo Macroecologia e Mudanças Climáticas (UFJ). É orientador nos Programas de Pós-Graduação: Ambiente e Sociedade (UEG-Morrinhos) e Biodiversidade e Conservação (IF-Goiano - Rio Verde). Foi editor associado da revista Oecologia Australis. Tem publicações na área da ecologia de mamíferos, com ênfase em: i) biodiversidade e distribuição de mamíferos Neotropicais, e ii) ecologia e conservação de mamíferos em paisagens fragmentadas.

Lattes: <http://lattes.cnpq.br/4195742742074059>

Recebido para publicação em dezembro de 2019

Aprovado para publicação em abril de 2020