



THE UNIVERSITY  
OF QUEENSLAND  
AUSTRALIA

CREATE CHANGE

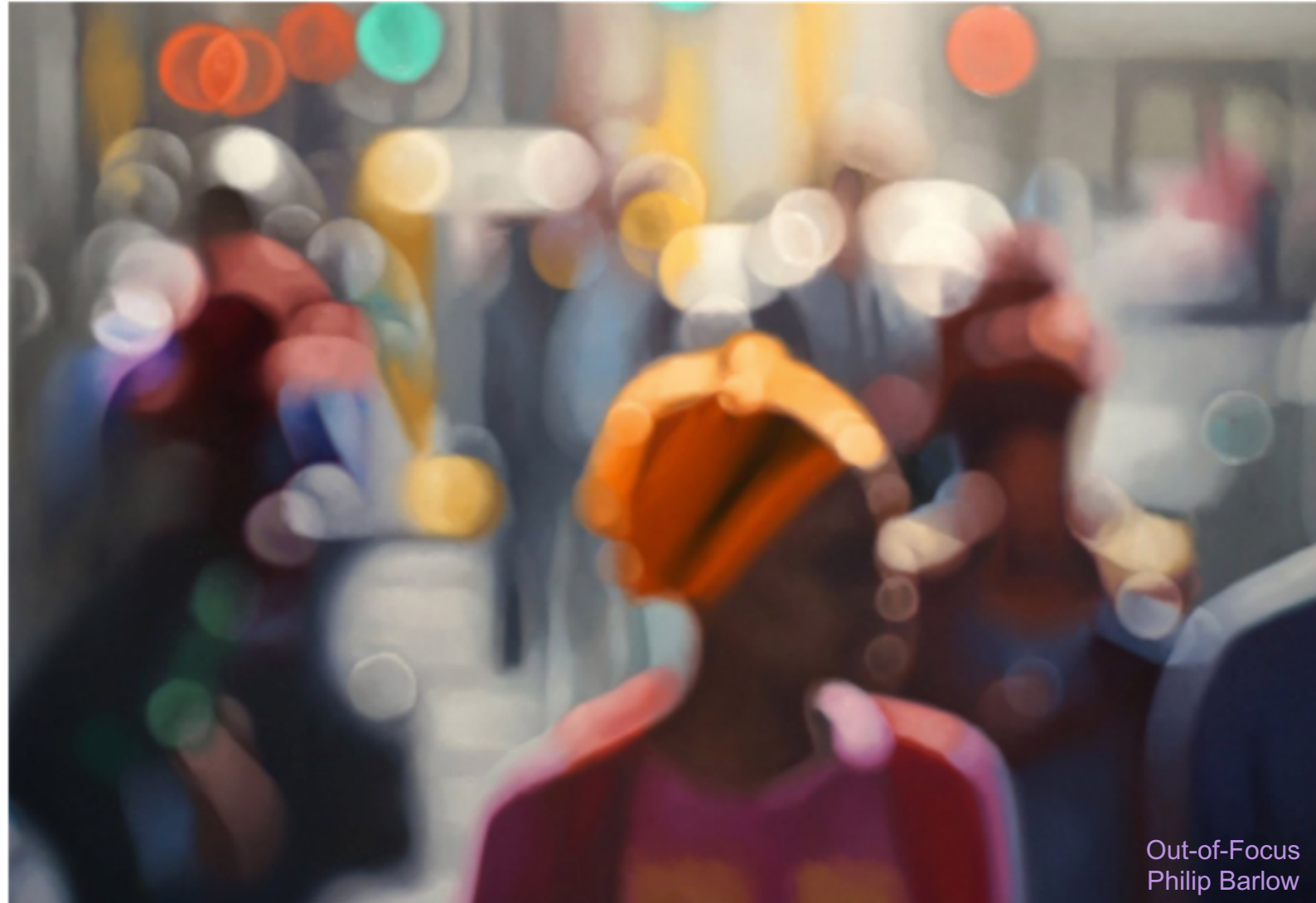
# Pedagogical partnership in uncertain times

**2020 National Students as Partners Roundtable**

Kelly E Matthews, Preeti Vayada & Yifei Liang

@kellymatthewsuq

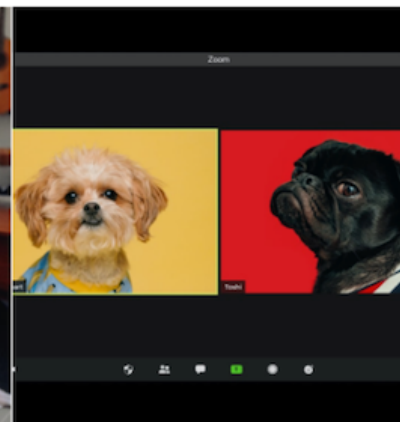
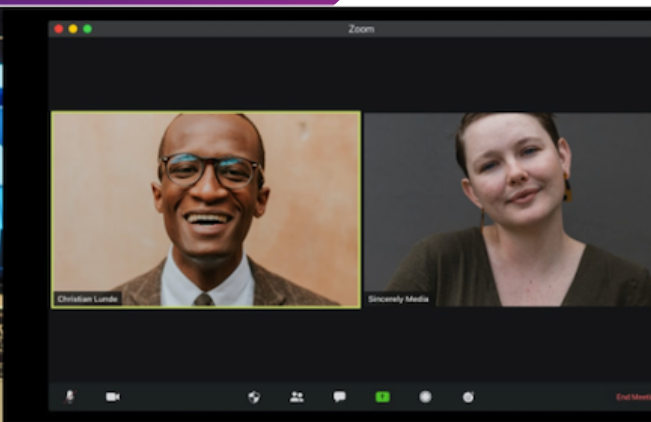
Describe 2020  
in one word



Out-of-Focus  
Philip Barlow



New rules:  
social and  
physical  
distancing



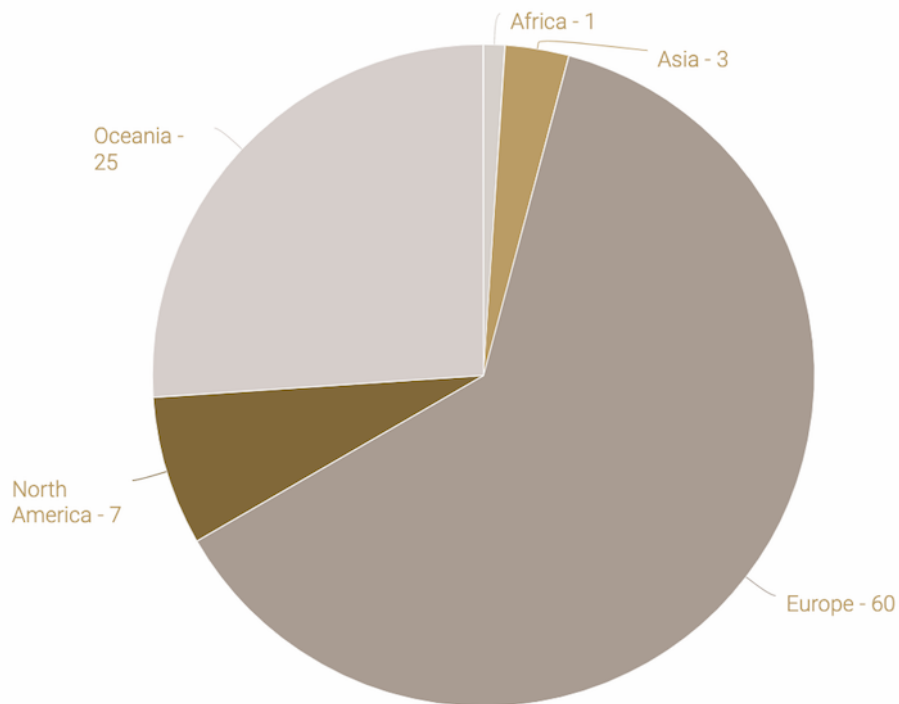
share SaP  
stories

# Online Community Poll

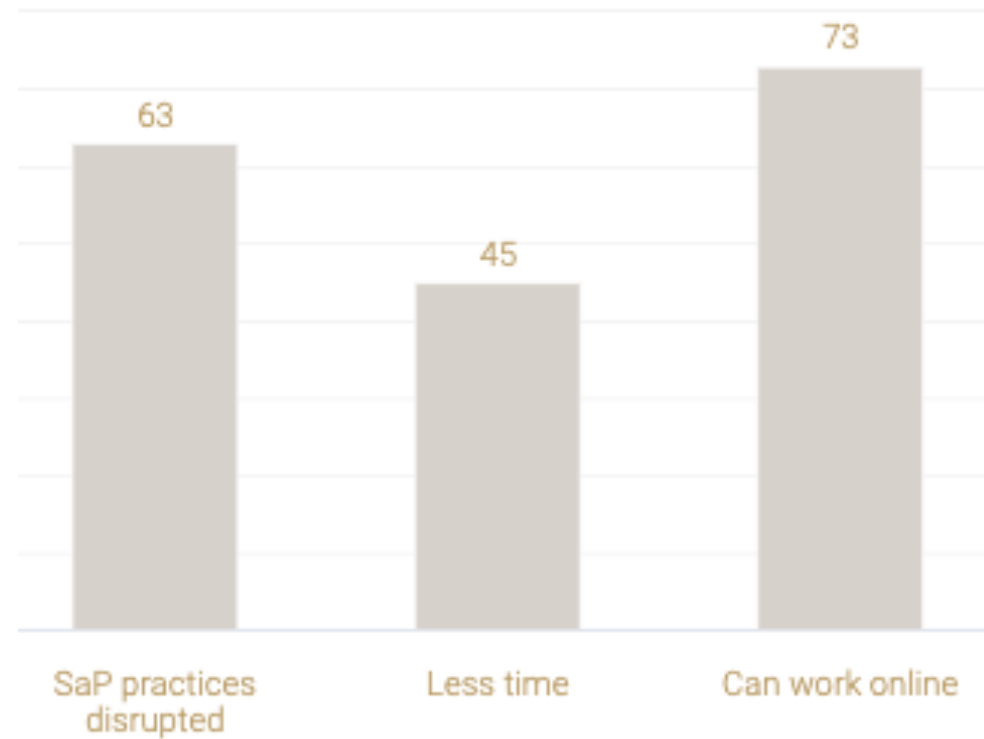
4 April to 1 May 2020

106 contributors

90% staff + 10% student/staff



## Impact



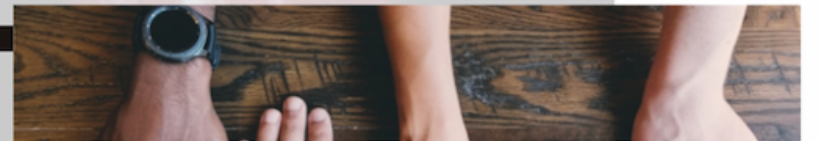
# Online Community Poll



**shared  
vulnerabilities**



**time and energy**



**connecting  
compassionately**

# Shared vulnerabilities

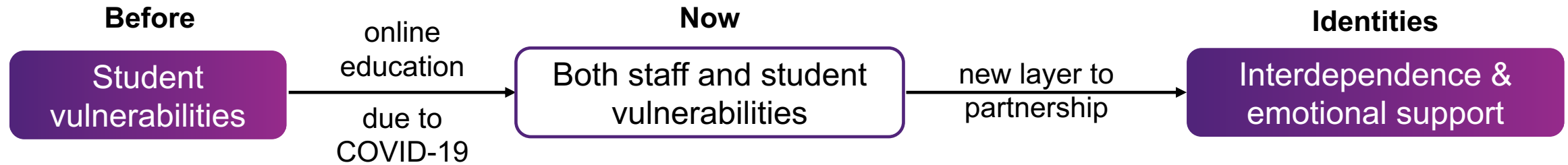
## Quotes

**I feel much closer to my students and much more exposed. (Europe)**

**We have so much to learn together/from each other about developing good online learning experiences. (North America)**

**The current situation has created new challenges and stress points for everyone. (Europe)**

# Shared vulnerabilities



# Time and energy

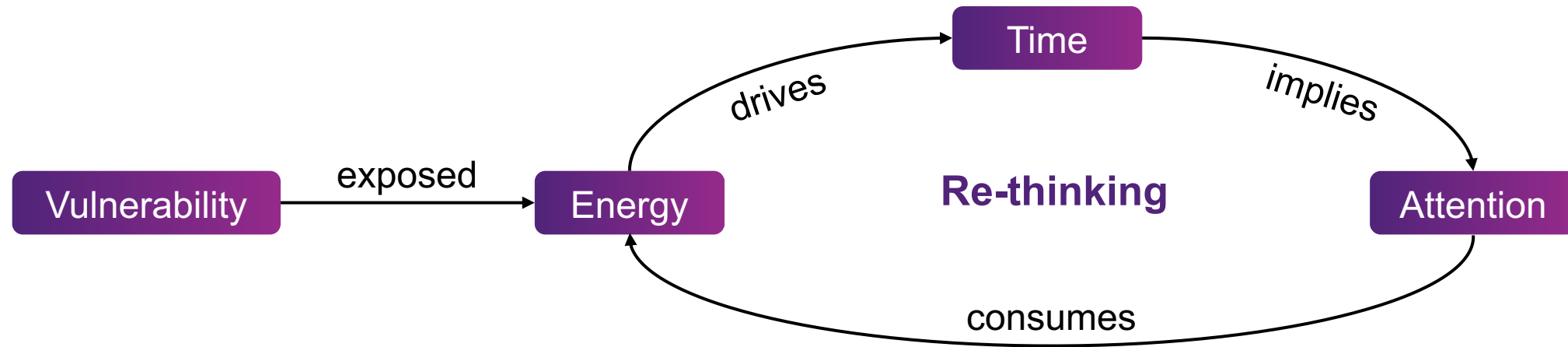
## Quotes

**A lot more time and effort are required to maintain a positive relationship online. More time needed for affirming relationship. (Oceania)**

**I think that educators will struggle to find the time to put new partnership initiatives together due to the pressures of keeping 'business as usual' running. (Europe)**



# Time and energy



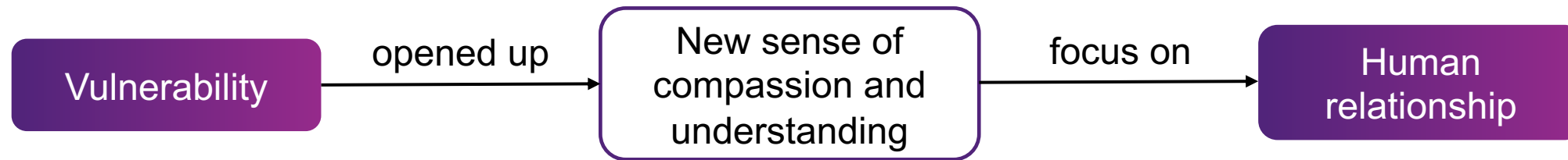
# Connecting compassionately

## Quotes

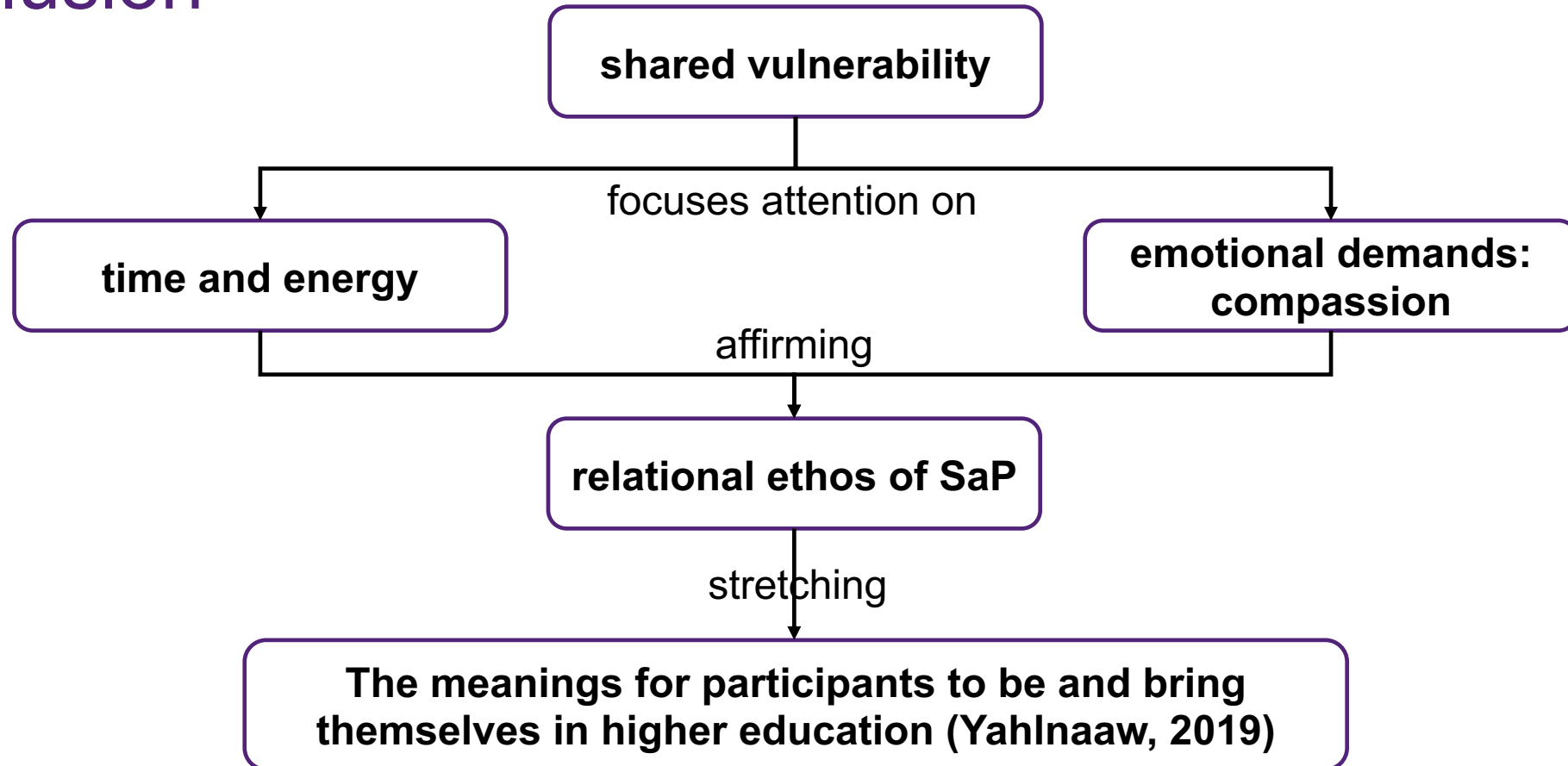
**Much more attention to how students are feeling, what emotions they are experiencing. Their humour and support were just as important for me, as my support and reassurance were for them. (Europe)**

**Learners and teachers together, taking care of one-another also means thinking about emotional, physical and mental health. (Europe)**

# Connecting compassionately



# Conclusion



**Ask ourselves: *What really matters to us as learners and teachers in higher education?***

# References

- Matthews, K.E. (2020). *Dataset: Learner-teacher partnership in times of COVID-19: A community poll to share practices and perspectives*, 4 April to 1 May 2020. Brisbane: University of Queensland. Retrieved from <http://escape.library.uq.edu.au/view/UQ:9ccf895>
- Matthews, K. E., Cook-Sather, A., Godbold, N., Healey, M., & Rafferty, C. (2020). Learner-teacher partnership in times of COVID-19: A community poll to share practices and perspectives. [http://www.surveymonkey.com/r/PPinCOVID-19\\_poll](http://www.surveymonkey.com/r/PPinCOVID-19_poll)
- Yahlnaaw, . (2019). T'aats'iigang: Stuffing a jar full. *International Journal for Students as partners*, 3(2), 6-10.



# Thank you Thank Deakin



THE UNIVERSITY  
OF QUEENSLAND  
AUSTRALIA

CREATE CHANGE

New rules:  
social and  
physical  
distancing

