

# Accepted Manuscript

The macroscopic appearance of the major duodenal papilla influences bile duct cannulation: a prospective multicenter study by the Scandinavian Association for Digestive Endoscopy study group for ERCP

Erik Haraldsson, MD, Leena Kylänpää, MD, PhD, Juha Grönroos, MD, PhD, Arto Saarela, MD, PhD, Ervin Toth, MD, PhD, Gunnar Qvigstad, MD, PhD, Mari Hult, MD, Outi Lindström, MD, PhD, Simo Laine, MD, PhD, Heikki Karjula, MD, Truls Hauge, MD, PhD, Riadh Sadik, MD, PhD, Urban Arnelo, MD, PhD

PII: S0016-5107(19)32062-0

DOI: <https://doi.org/10.1016/j.gie.2019.07.014>

Reference: YMGE 11670

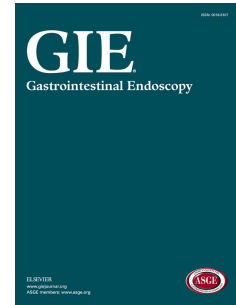
To appear in: *Gastrointestinal Endoscopy*

Received Date: 11 April 2019

Accepted Date: 10 July 2019

Please cite this article as: Haraldsson E, Kylänpää L, Grönroos J, Saarela A, Toth E, Qvigstad G, Hult M, Lindström O, Laine S, Karjula H, Hauge T, Sadik R, Arnelo U, The macroscopic appearance of the major duodenal papilla influences bile duct cannulation: a prospective multicenter study by the Scandinavian Association for Digestive Endoscopy study group for ERCP, *Gastrointestinal Endoscopy* (2019), doi: <https://doi.org/10.1016/j.gie.2019.07.014>.

This is a PDF file of an unedited manuscript that has been accepted for publication. As a service to our customers we are providing this early version of the manuscript. The manuscript will undergo copyediting, typesetting, and review of the resulting proof before it is published in its final form. Please note that during the production process errors may be discovered which could affect the content, and all legal disclaimers that apply to the journal pertain.



# The macroscopic appearance of the major duodenal papilla influences bile duct cannulation: a prospective multicenter study by the Scandinavian Association for Digestive Endoscopy study group for ERCP

Erik Haraldsson<sup>1,2</sup> MD, Leena Kylänpää<sup>3</sup> MD, PhD, Juha Grönroos<sup>4</sup> MD, PhD, Arto Saarela<sup>5</sup> MD, PhD, Ervin Toth<sup>6</sup> MD, PhD, Gunnar Qvigstad<sup>7</sup> MD, PhD, Mari Hult<sup>8,11</sup> MD, Outi Lindström<sup>3</sup> MD, PhD, Simo Laine<sup>4</sup> MD, PhD, Heikki Karjula<sup>5</sup> MD, Truls Hauge<sup>9</sup> MD, PhD, Riadh Sadik<sup>10</sup> MD, PhD, Urban Arnelo<sup>1,11</sup> MD, PhD

1. Division of Surgery, Department of Clinical Science, Intervention and Technology, Karolinska Institutet, Stockholm, Sweden
2. Department of Surgery, Skaraborg Hospital, Skövde, Sweden
3. Department of Gastroenterological Surgery, University of Helsinki and Helsinki University Hospital, Helsinki, Finland
4. Department of Surgery, University of Turku, and Division of Digestive Surgery and Urology, Turku University Hospital, Turku, Finland
5. Department of Surgery, Oulu University Hospital, Oulu, Finland
6. Department of Gastroenterology, Skåne University Hospital, Lund University, Malmö, Sweden
7. Department of Gastroenterology and Hepatology, St. Olavs Hospital, Trondheim University Hospital, Trondheim, Norway
8. Department of Medicine, Solna, Unit of Clinical Epidemiology, Karolinska Institutet, Stockholm, Sweden
9. Department of Gastroenterology, Oslo University Hospital and Institute of Clinical Medicine, Faculty of Medicine, University of Oslo, Oslo, Norway;
10. Department of Gastroenterology, Sahlgrenska Academy, Gothenburg, Sweden
11. Department of Upper GI Diseases, Karolinska University Hospital, Stockholm, Sweden

## Keywords

Cholangiopancreatography, Endoscopic Retrograde Catheterization  
Ampulla of Vater

## Corresponding Author

Erik Haraldsson, e-mail: [erik.haraldsson@ki.se](mailto:erik.haraldsson@ki.se)



# The macroscopic appearance of the major duodenal papilla influences bile duct cannulation: a prospective multicenter study by the Scandinavian Association for Digestive Endoscopy study group for ERCP

## Abstract

**Background and Aims:** Certain appearances of the major duodenal papilla have been claimed to make cannulation more difficult during ERCP. This study uses a validated classification of the endoscopic appearance of the major duodenal papilla to determine if certain types of papilla predisposes to difficult cannulation.

**Methods:** Patients, with a naïve papilla, scheduled for ERCP, were included. The papilla was classified into one of 4 papilla types before cannulation started. Time to successful bile duct cannulation, attempts and number of pancreatic duct passages were recorded. Difficult cannulation was defined as, after 5 minutes, 5 attempts, or 2 pancreatic guide-wire passages.

**Results:** One thousand four hundred one patients were included from 9 different centers in the Nordic countries. The overall frequency of difficult cannulation was 42% (95% CI, 39%-44%). Type 2, small papilla, (52%; 95% CI, 45%-59%) and Type 3 protruding or pendulous papilla (48%; 95% CI, 42%-53%) were more frequently difficult to cannulate compared with Type 1, regular papilla (36%; 95% CI, 33%-40%, both  $p < 0.001$ ). If an inexperienced endoscopist started cannulation, the frequency of failed cannulation increased from 1.9% to 6.3% ( $p < 0.0001$ ), even though they were replaced by a senior endoscopist after 5 minutes.

**Conclusion:** The endoscopic appearance of the major duodenal papilla influences bile duct cannulation. Small, Type 2, and protruding or pendulous Type 3 papillae are more frequently

difficult to cannulate. In addition, cannulation might even fail more frequently if a beginner starts cannulation. These findings have to be taken into consideration when performing studies regarding bile duct cannulation and in training future generations of endoscopists.

## Background

How to best achieve a safe and effective bile duct cannulation during ERCP has always been, and still is, a much-debated issue<sup>1-3</sup>. Both technical- and patient-related aspects of cannulation and cannulation difficulties have previously been investigated<sup>4-6</sup>, but not if, and in what way, the endoscopic appearance of the major duodenal papilla may influence cannulation.

All endoscopists who perform ERCP recognize the obvious differences in the macroscopic appearance of the major duodenal papilla<sup>7</sup>. This has led to a widespread conception among endoscopists that certain specified appearances of the papilla are more difficult to cannulate and therefore more prone to adverse events<sup>8-12</sup>. However, until now there has not been a structured investigation of what kind of influence the macroscopic appearance of the major duodenal papilla has on difficulties during bile duct cannulation. Before determining the association between the macroscopic appearance of the major duodenal papilla and cannulation difficulties some prerequisites have to be met. First, there has to be a clear definition of what is to be considered a difficult bile duct cannulation in order to make any evaluation of cannulation difficulties relevant and reproducible. There have been several different definitions used to investigate this matter<sup>13</sup>. However, since 2016, the European Society for Gastrointestinal Endoscopy (ESGE)<sup>14</sup> recommends the use of the definition presented in the SADE group study<sup>15</sup> when investigating issues regarding difficult bile duct cannulation. This definition shows

a clear increase in adverse events when any of the criteria of: more than 5 minutes, 5 attempts, or 2 pancreatic guidewire passages were met.

Second, to make certain that different endoscopists are in agreement on the endoscopic appearance of the papilla, an interobserver-validated endoscopic classification has to be established. In our previously published paper, the first inter- and intraobserver-validated classification of the endoscopic appearance has been presented<sup>16</sup> (Figure 1).

With a validated classification and an accepted definition of difficult cannulation in place, we aim to determine the possible influence the endoscopic appearance of the major duodenal papilla has on the ability to perform bile duct cannulation during ERCP.

## Methods

Patients from 9 different centers in the Nordic countries who, on clinical grounds, were scheduled for ERCP were prospectively included into the study. To be included, the patients had to be over 18 years old, have an intact, naïve, major duodenal papilla, and the desired duct to cannulate had to be the common bile duct.

Exclusion criteria were a papilla hidden inside a large diverticulum or bulky tumors of the papilla that made classification impossible and also patients with surgically altered anatomy.

Primary outcome measure was differences in the frequency of difficult cannulation distributed between the different papilla types. Difficult bile duct cannulation was defined using the 5-5-2 criterion, ie, after 5 minutes, 5 attempts or 2 pancreatic guidewire passages and when any of those limits is reached<sup>15</sup>. The endoscopic appearance of the major duodenal papilla was classified into 1 of the 4 distinctive papilla types: Regular (Type 1), small (Type 2), protruding or pendulous (Type 3) and creased or ridged (Type 4) of our previously published classification<sup>16</sup> (Figure 1). When, during the ERCP, the duodenoscope reached the papillary region in the duodenum, the endoscopist classified

the endoscopic appearance of the papilla into 1 of the 4 predefined papilla types. Two photographs of the papilla were captured with and without a cannulation catheter or sphincterotome alongside it for size reference. Thereafter, bile duct cannulation was initiated. Time was recorded from the first intentional touch of the papilla. The number of continuous contacts with the papilla, attempts, were recorded as well as all guidewire passages into the main pancreatic duct. When a guidewire or catheter was securely placed inside the common bile duct, determined by fluoroscopy, the stopwatch was terminated. The number of cannulation attempts and pancreatic guidewire passages was summarized. Data regarding the indication for the ERCP, patient demographics, methods used for cannulation, measures taken to avoid post ERCP pancreatitis (nonsteroidal anti-inflammatory drugs [NSAIDs] and/or protective pancreatic endoprosthesis insertion), as well as post-ERCP adverse events occurring during the first 24 hours or before discharge were recorded. Adverse events were defined according to the consensus criteria<sup>17</sup>. No further follow-up of the severity of the adverse events were made.

To determine the influence of endoscopists experience on difficulties during bile duct cannulation of the different papilla types, endoscopists of different levels of experience were allowed to start cannulation attempts. When an inexperienced endoscopist, ie, a “fellow,” started attempting bile duct cannulation and could not achieve deep bile duct cannulation within 5 minutes, a more senior colleague replaced the fellow and continued cannulation efforts. A fellow was defined as an endoscopist who had performed fewer than 200 career-long ERCPs<sup>18</sup>. Expert endoscopists were defined as having performed over 1000 ERCPs, and intermediate endoscopists were those who had performed 200 to 1000 ERCPs during their career. Power calculations were not possible because the distribution of the different papilla types was previously unknown as was the overall frequency of difficult cannulation using the ESGE approved definition. The 5-5-2 (more

than 5 minutes, more than 5 attempts, 2 or more wire passages or contrast injections into the pancreatic duct) definition is based primarily on the work by the SADE study group of ERCP<sup>15</sup>, consisting of expert endoscopists. However, ESGE has recommended that this definition should be used in future studies investigating difficult cannulation.

All statistical calculations were made with SPSS version 25. The Chi-square test or Fisher exact test were used for categorical data as appropriate, as well as odds ratio calculation. Mann-Whitney U-test was used for non-normally distributed continuous data. The study was approved by the ethical review board at the Karolinska Institutet, Stockholm (Dnr 2013/908-31/2).

## Results

In total, 1401 patients were included in the study. Classification of the papilla into the predefined types was possible in 98% of the cases. In 2% (n=24) of the cases, the endoscopist was unable to select an appropriate papilla type and these 24 cases were excluded from further analyses. The endoscopist was asked to state a reason for inability to classify the papilla. In the majority (n=13) of cases a swollen papilla caused by inflammation, impacted stones or an unexpected finding of a tumor (exclusion criteria) was indicated as the causative factor. In 5 case reports, no explanation for inability to perform classification was given. It was in violation with the study protocol to classify the papillae in retrospect using the photos taken during the ERCP. In only 1 case did the endoscopist have problems in choosing between the defined papilla types. In the remaining 5 cases, classification was impossible due to inability to find the papilla because of extensive mucosal folds, large diverticulum (exclusion criteria), or narrow duodenal lumen hindering movement of the duodenoscope.

The distribution of the different papilla types is shown in Figure 2, with regular papilla, Type 1 being the most frequent (56%) followed by Type 3, protruding or pendulous papilla occurring in 23%.

The mean age of the patients was 66 years (range 18-101 years), and 52% were female.

The most common indications for ERCP were common bile duct stones 44%, followed by periampullary tumor<sup>19</sup> (excluding tumors invading the papilla itself) and jaundice, see Table 1. No significant differences were seen between the different papilla types regarding age, sex, previous cholecystectomy rate, NSAID use, protective pancreatic stent or indications for ERCP, except for patients with creased or ridged papilla, Type 4. Compared with Type 1 papilla, patients with Type 4 papilla were, on average, younger (mean 59 years vs 66 years,  $p < 0.0001$ ) and had more frequently primary sclerosing cholangitis as an indication for ERCP (18.7% vs 5.7%,  $p < 0.0001$ ). In patients with Type 3 papilla, periampullary diverticulum was not as frequent as in Type 1 papilla (6% vs 13%,  $p = 0.001$ ).

In most instances the cannulation attempts were started by an expert endoscopist ( $n = 870$ , 62%) and to a lesser extent by an endoscopist in the intermediate category ( $n = 240$ , 17%). In 291 cases (21%), a fellow started the cannulation attempts. The level of endoscopist experience was evenly distributed among the different papilla types, with only minor, nonsignificant differences.

The overall frequency of difficult cannulation regardless of papilla type was 42% (95% CI, 39%-44%). Among the different papilla types, difficult cannulation varied, as shown in Figure 3. Small papilla, Type 2 (52%; 95% CI, 45%-59%) and protruding or pendulous papilla, Type 3 (48%; 95% CI, 42%-53%) were significantly more often difficult to cannulate compared with regular, Type 1 papilla (36%; 95% CI, 33%-40%). There was, accordingly, an increased odds ratio (OR) for difficult cannulation for both small papilla

(OR, 1.89; 95% CI, 1.37-2.62) and protruding or pendulous Type 3 papilla (OR, 1.61; 95% CI, 1.24-2.10) compared with regular, Type 1 papilla. Creased or ridged, Type 4 papilla (43%; 95% CI, 34%-52%) did not show any significant difference from regular Type 1 papilla in the frequency of difficult cannulation.

Cannulation difficulties were even more evident when endoscopists with different levels of experience attempted bile duct cannulation. Regardless of papilla type, bile duct cannulation was more often difficult when a fellow started (69%; 95% CI, 64%-74%) as well as when an endoscopist from the intermediate category started (49%; 95% CI, 42%-55%) compared with when an expert started (30%; 95% CI, 27%-34%, both  $P$  values < .0001). The frequency of difficult cannulation for endoscopists with varying degrees of experience is shown in Table 2

When only expert endoscopists performing bile duct cannulation on their own were analyzed, the result was similar as in the entire study population: a significantly higher frequency of difficult cannulation when cannulating small papilla, Type 2 (43%; 95% CI, 34%-53%;  $p=0.0002$ ) or protruding or pendulous papilla, Type 3 (36%; 95% CI, 29%-43%;  $p=0.0075$ ) was seen, compared with regular papilla, Type 1 (25%; 95% CI, 21%-29%). No difference was found when comparing creased or ridged papilla, Type 4 (32%; 95% CI, 21%-45%;  $p=0.22$ ) with Type 1.

The median time to successful bile duct cannulation was significantly longer for both Type 2 papilla (median time 269 seconds, IQR 622 seconds) and Type 3 papilla (median time 245 seconds, IQR 794 seconds, both  $p<0.05$ ) compared with Type 1 papilla (median time 139 seconds, IQR 455 seconds). Cannulation time for creased or ridged papilla Type 4 (median 210 seconds, IQR 515 seconds) was not significantly different from Type 1.

In 99% of the ERCPs the endoscopists used guidewire-assisted cannulation. If cannulation became difficult, 50% of the endoscopists continued with guidewire

cannulation until cannulation succeeded or failed. In the remaining patients, different auxiliary cannulation techniques were used. Standard pre-cut technique as the only auxiliary method was used in 9%, pancreatic sphincterotomy in 15%, double-wire technique in 15% and combination of several techniques in 10%. No significant differences between the papilla types regarding choice of auxiliary technique was found. The overall post ERCP pancreatitis (PEP) frequency regardless of papilla type was 6.7% (95% CI, 5.5%-8.2%). When there was difficult cannulation the frequency of PEP increased to 8.9% compared with 5.1% ( $p=0.006$ ) when cannulation was not difficult. There was also a variation in the frequency of PEP between the different papilla types but none of the differences were statistically significant. Regular, Type 1 papilla had a PEP frequency of 6.1% (95% CI, 4.6%-8.0%) whereas small, Type 2 papilla had 9.4% (95% CI, 5.9%-14.6%), protruding or pendulous, Type 3 papilla 6.4% (95% CI, 4.1%-9.7%) and creased or ridged, Type 4 had 7.5% (95% CI, 3.6%-14.3%). There was overall a low frequency of other adverse events such as postinterventional bleeding (0.2%) and cholangitis (0.6%) and there were no significant differences between the papilla types. The overall frequency of failed cannulation was low (2.8%; 95% CI, 2.1%-3.9%), with only nonsignificant differences between the different papilla types. However, the frequency of failed cannulation regardless of papilla type increased from 1.9% to 6.3% ( $p<0.0001$ ) if a fellow started cannulation attempts compared with an expert, even though they had to turn the endoscope over to a more senior colleague after 5 minutes. This was especially pronounced for small, Type 2 papilla with an overall 14% failed cannulation frequency when a fellow started compared with 2.7% ( $p=0.018$ ) when an expert performed the cannulation single-handedly. The OR, regardless of papilla type, for failed cannulation when a fellow started to cannulate compared with when an expert endoscopist started was 4.0 (95% CI, 2.0-8.2;  $p=0.0001$ ). When a fellow started the OR



for failed cannulation on a small papilla was 6.1 (95% CI, 1.4-27;  $p=0.017$ ) and on a protruding or pendulous papilla 5.2 (95% CI, 1.3-21;  $p=0.022$ ) compared with when an expert started.

## Discussion

Although many endoscopists have been assuming that the appearance of the major duodenal papilla has implications on bile duct cannulation no prospective investigation of this matter has previously been performed. By using our classification of the endoscopic appearance of the major duodenal papilla combined with the ESGE approved definition of difficult cannulation, we have determined that small, Type 2 papillae and protruding or pendulous, Type 3 papillae are more frequently difficult to cannulate. Accordingly, they also have a higher OR for difficult cannulation compared to regular, Type 1 papillae.

These findings have previously only been assumed, based on expert opinion, and not on a validated classification of different papilla types and a prospective data collection<sup>4,11,12</sup>.

With these results in mind, further research regarding cannulation difficulties has to take these aspects into consideration.

In addition, this study demonstrates clear differences regarding frequency of difficult cannulation, between a fellow starting cannulation of a certain type of papilla, compared with when an expert is starting. This finding is, of course, obvious, but has previously not been quantified using the present definition for difficult cannulation or in regard to differences in endoscopic appearance of the papilla types. The differences in frequency of difficult cannulation might also be of use when evaluating competence among different endoscopists and during ERCP training. With beginners having a high ratio of difficult cannulation and experts a significantly lower ratio, and as difficult cannulation is a considerably more frequent phenomenon than failed cannulation and affects every

endoscopist to a varying degree, it can be used as an intraprocedural quality measure along with failed cannulation frequency<sup>20,21</sup>. Further studies regarding this might determine a benchmark for what frequency of difficult cannulation one should accomplish and maintain to be considered a qualified ERCP endoscopist.

A more unexpected but intriguing and important finding is that when a fellow starts cannulation, the odds for failed cannulation increase significantly even as a more senior endoscopist continues cannulation attempts after 5 minutes. These findings also have implications on how education and training in ERCP and bile duct cannulation is conducted. For example, it may be suggested that when a fellow is confronted with a certain papilla type, i.e. small, Type 2 or protruding or pendulous, Type 3 papilla, they probably should abstain from any cannulation attempt and hand the endoscope over to a more experienced endoscopist from the very start, so as not to jeopardize further cannulation success. Perhaps during initial ERCP training focus should be shifted from bile duct cannulation attempts by the trainee, leaving that to the trainer, and instead focusing on other technical skills to complete a successful ERCP, not putting the patient at increased risk for failed cannulation. Simulator training, training on models or only starting procedures on patients who have previously been sphincterotomized is a safer path in the early phase of ERCP-learning<sup>22</sup>.

In previous studies it was found that the factor “trainee participation” might have a slight negative influence on bile duct cannulation<sup>23,24</sup>. No definitive explanation for this finding was shown, but trauma to the papilla was discussed as a possible explanation. In contrast, other studies have not been able to identify this problem when evaluating trainees learning ERCP<sup>25,26</sup>. Frost et al<sup>27</sup> made a structured effort to answer this question. However, in contrast to the present study they could not find any negative impact of letting a trainee start cannulation. None of these studies<sup>25-27</sup> have, on the other hand,

considered the impact of the endoscopic appearance of the papilla on cannulation difficulties. The present study was not designed to investigate this unexpected finding, and consequently it needs to be evaluated in a more dedicated study to make any definitive statements regarding this finding.

The same holds true for the post-ERCP pancreatitis (PEP) frequencies for the different papilla types. No significant differences between the papilla types regarding PEP frequency was seen in the present study, although there is a tendency that small papillae have a frequency of PEP in parallel with the increased frequency of difficult cannulation. In the present study, as well as in previous studies, there is a higher frequency of PEP if cannulation is difficult.<sup>28,29</sup> The definition for difficult cannulation used is constructed with the risk of PEP as a decisive factor<sup>15</sup>.

When a new classification is made, to be used in a clinical setting, one has to make some kind of compromise between usefulness and precision. Previously there have been suggestions for a classification of the endoscopic appearance of the papilla but it has not undergone any interobserver validation and been applied in studies concerning pre-cut cannulation technique<sup>9,30</sup>, not difficult cannulation per se. In the present study, we aimed at implementing a more universal, easy-to-use classification, in an everyday clinical setting to make the results more generalizable. As in all studies where different observers are called upon to make a judgement and determine what they believe is the correct classification, there will always be an uncertainty as to whether the “correct” decision is made. In contrast, one could ask oneself, how useful, in the clinical situation, is a classification if only dedicated experts can determine the “correct” answer? In the present and our previous study, we have tried to balance these opposing aspects to make a classification that is easy to use and understand, but still interobserver-validated to a

substantial degree, to both experts and beginners, making it relevant in everyday clinical practice.

To summarize and conclude, the present study has shown that the endoscopic appearance of the major duodenal papilla affects bile duct cannulation. Small, Type 2 and protruding or pendulous Type 3 papillae are more often difficult to cannulate, especially for inexperienced endoscopists. Furthermore, the finding that when a fellow endoscopists start attempting bile duct cannulation the frequency of failed cannulation rises, even when a more experienced endoscopist continues cannulation, raises some concerns regarding endoscopy training.

These findings have to be taken into consideration when performing studies regarding bile duct cannulation and in the training of future generations of endoscopists.

### Acknowledgements

The study was supported by grants from the Research Fund at Skaraborg Hospital, Skövde, Sweden (VGSKAS 863391) and from the Stockholm County Council, the Karolinska Institutet (SLL: ALF 20170480)

The authors wish to thank colleagues helpful with data acquisition: Per Bergenzaun, Roberto Valente, Alexander Waldthaler, Niklas Fagerström, Karolinska University Hospital, Stockholm Sweden. Tomas Manke, Anders Kylebäck och Åsa Fredriksson, Skaraborg Hospital, Skövde, Sweden. Marianne Udd, Mia Rainio, Andrea Tenca, Helsinki University Hospital, Helsinki, Finland. Sara Regnér, Gabriele Wurm Johanson, Artur Nemeth, Mats Hall, Skåne University Hospital, Malmö, Sweden.

The authors also like to thank Fredrik Swahn, Skåne University Hospital, Lund, Sweden and Per Ejstrud, Aalborg University Hospital, Denmark for valuable intellectual input.

### References

1. Adler DG. Guidewire cannulation in ERCP: from zero to hero! *Gastrointest Endosc* 2018;87:202–4.
2. Hawes RH, Devière J. How I cannulate the bile duct. *Gastrointest Endosc* 2018;87:1–3.
3. Reddy ND, Nabi Z, Lakhtakia S. How to improve cannulation rates during endoscopic retrograde cholangiopancreatography. *Gastroenterology* 2017;152:1275–9.

4. Lee T, Hwang S, Choi H, et al. Sequential algorithm analysis to facilitate selective biliary access for difficult biliary cannulation in ERCP: a prospective clinical study. *BMC Gastroenterol* 2014;14:30.
5. Lopes L., Dinis-Ribeiro M., Rolanda C. Early precut fistulotomy for biliary access: time to change the paradigm of “the later, the better”? *Gastrointest Endosc* 2014;80:634–41.
6. Löhr J-M, Aabakken L, Arnelo U, et al. How to cannulate? A survey of the Scandinavian Association for Digestive Endoscopy (SADE) in 141 endoscopists. *Scand J Gastroentero* 2012;47:861–9.
7. Silvis SE., Vennes JA., Dreyer M. Variations in the normal duodenal papilla. *Gastrointest Endosc* 1983;29:132–3.
8. Swan MP., Bourke MJ., Williams SJ., et al. Failed biliary cannulation: Clinical and technical outcomes after tertiary referral endoscopic retrograde cholangiopancreatography. *World J Gastroentero* 2011;17:4993–8.
9. Horiuchi A., Nakayama Y., Kajiyama M., et al. Effect of Precut Sphincterotomy on Biliary Cannulation Based on the Characteristics of the Major Duodenal Papilla. *Clin Gastroenterol H* 2007;5:1113–8.
10. Mariani A., Leo M., Giardullo N., et al. Early precut sphincterotomy for difficult biliary access to reduce post-ERCP pancreatitis: a randomized trial. *Endoscopy* 2016;48:530–5.
11. Testoni P. No treatment for asymptomatic common bile ducts stones? *Endosc Int Open* 2017;05:E1151–2.
12. Matsushita M., Uchida K., Nishio A., et al. Small papilla: another risk factor for post-sphincterotomy perforation. *Endoscopy* 2008;40:875–6.
13. Liao W-C., Angsuwatcharakon P., Isayama H., et al. International consensus recommendations for difficult biliary access. *Gastrointest Endosc* 2017;85:295–304.
14. Testoni P., Mariani A., Aabakken L., et al. Papillary cannulation and sphincterotomy techniques at ERCP: European Society of Gastrointestinal Endoscopy (ESGE) Clinical Guideline. *Endoscopy* 2016;48:657–83.
15. Halttunen J., Meisner S., Aabakken L., et al. Difficult cannulation as defined by a prospective study of the Scandinavian Association for Digestive Endoscopy (SADE) in 907 ERCPs. *Scand J Gastroentero* 2014;49:752–8.
16. Haraldsson E., Lundell L., Swahn F., et al. Endoscopic classification of the papilla of Vater. Results of an inter- and intraobserver agreement study. *United Eur Gastroent* 2016;5:504–10.
17. Cotton P., Lehman G., Vennes J., et al. Endoscopic sphincterotomy complications and their management: an attempt at consensus. *Gastrointestinal Endoscopy* 1991;37:383–93.

18. Jowell P., Baillie J., Branch., et al. Quantitative assessment of procedural competence: a prospective study of training in endoscopic retrograde cholangiopancreatography. *Ann Intern Med* 1996;125:983-89.
19. Yeo CJ., Sohn TA., Cameron JL., et al. Periampullary adenocarcinoma. *Ann Surg* 1998;227:821–31.
20. Adler DG., Lieb JG., Cohen J., et al. Quality indicators for ERCP. *Gastrointest Endosc* 2015;81:54–66.
21. Domagk D., Oppong KW., Aabakken L., et al. Performance measures for endoscopic retrograde cholangiopancreatography and endoscopic ultrasound: a European Society of Gastrointestinal Endoscopy (ESGE) Quality Improvement Initiative. *United Eur Gastroent* 2018;6:1448–60.
22. Jovanovic I., Mönkemüller K. Quality in endoscopy training—the endoscopic retrograde cholangiopancreatography case. *Ann Transl Medicine* 2018;6:264.
23. Williams E., Ogollah R., Thomas P., et al. What predicts failed cannulation and therapy at ERCP? Results of a large-scale multicenter analysis. *Endoscopy* 2012;44:674–83.
24. Peng C., Nietert PJ., Cotton PB., et al. Predicting native papilla biliary cannulation success using a multinational endoscopic retrograde cholangiopancreatography (ERCP) quality network. *Bmc Gastroenterol* 2013;13:147.
25. Pan Y., Zhao L., Leung J., et al. Appropriate time for selective biliary cannulation by trainees during ERCP – a randomized trial. *Endoscopy* 2015;47:688–95.
26. Cotton PB., Garrow DA., Gallagher J., et al. Risk factors for complications after ERCP: a multivariate analysis of 11,497 procedures over 12 years. *Gastrointest Endosc* 2009;70:80–8.
27. Frost J., Kurup A., Shetty S., et al. Does the presence of a trainee compromise success of biliary cannulation at ERCP? *Endosc Int Open* 2017;5:E559–62.
28. Dumonceau J-M., Andriulli A., Elmunzer JB., et al. Prophylaxis of post-ERCP pancreatitis: European Society of Gastrointestinal Endoscopy (ESGE) Guideline – Updated June 2014. *Endoscopy* 2014;46:799–815.
29. Elmunzer JB. Reducing the risk of post-ERCP endoscopic retrograde cholangiopancreatography pancreatitis. *Digest Endosc* 2017;29:749–57.
30. Lee T., Bang B., Park S-H., Jeong S., Lee D., Kim S-J. Precut fistulotomy for difficult biliary cannulation: is it a risky preference in relation to the experience of an endoscopist? *Digest Dis Sci* 2011;56:1896–903.

## Tables

<b>Table 1. Patient characteristics</b>	
No of patients (n)	1401
Female	52%
Age, years, mean (SD)	66 (16)
<b>Indication for ERCP</b>	
Common bile duct stones	44%
Periampullary tumor	15%
Jaundice	13%
Stricture	9%
Primary sclerosing cholangitis	7%
Bile Leak	4%
Other	8%

<b>Table 2. Frequency of difficult cannulation, depending on experience and papilla type</b>			
Experience	Expert	Intermediate	Fellow
Papilla type			
Type 1, regular papilla	25%	45%*	66%*
Type 2, small papilla	43%	49% <sup>⊕</sup>	83%*
Type 3, protruding or pendulous papilla	36%	63%*	69%*
Type 4, creased or ridged papilla	32%	44% <sup>⊕</sup>	73%*
<b>Overall</b>	<b>30%</b>	<b>49%*</b>	<b>69%*</b>

\*Significant difference ( $p < 0.05$ ) compared with Expert, <sup>⊕</sup> nonsignificant compared with Expert

## Figure legends

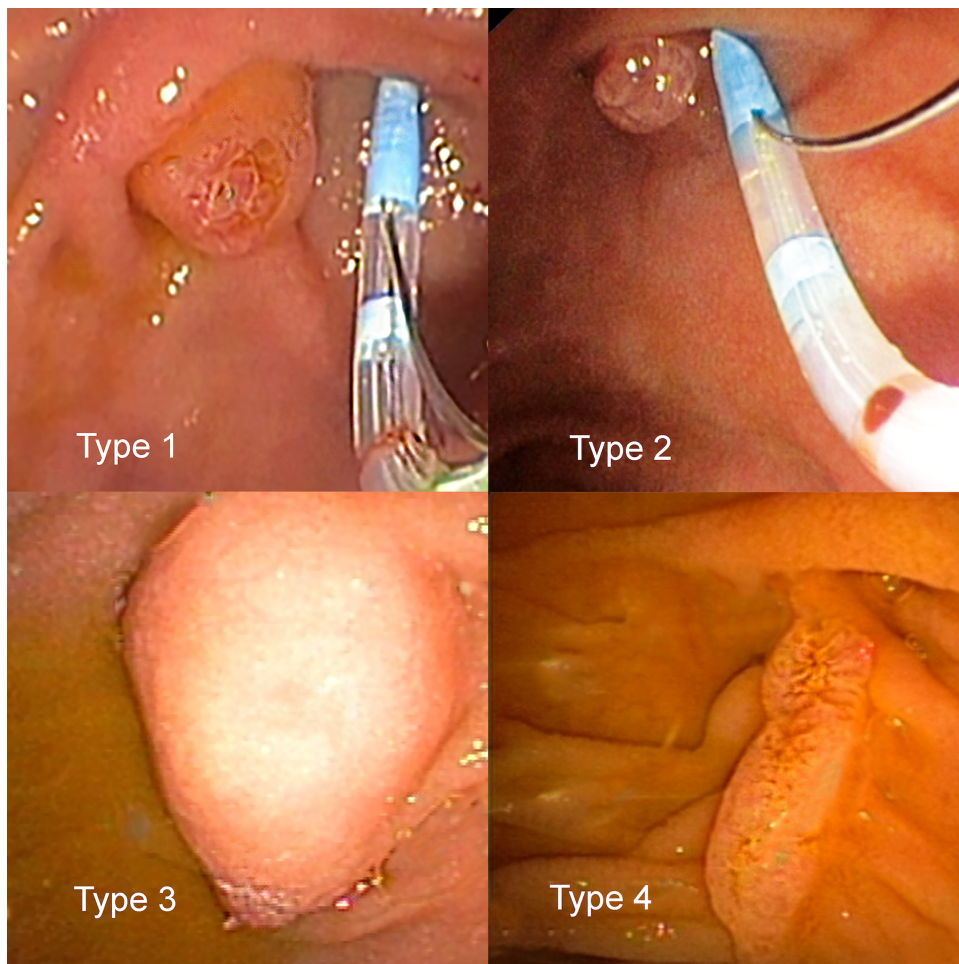
### **Figure 1. Classification of the endoscopic appearance of the papilla of Vater.**

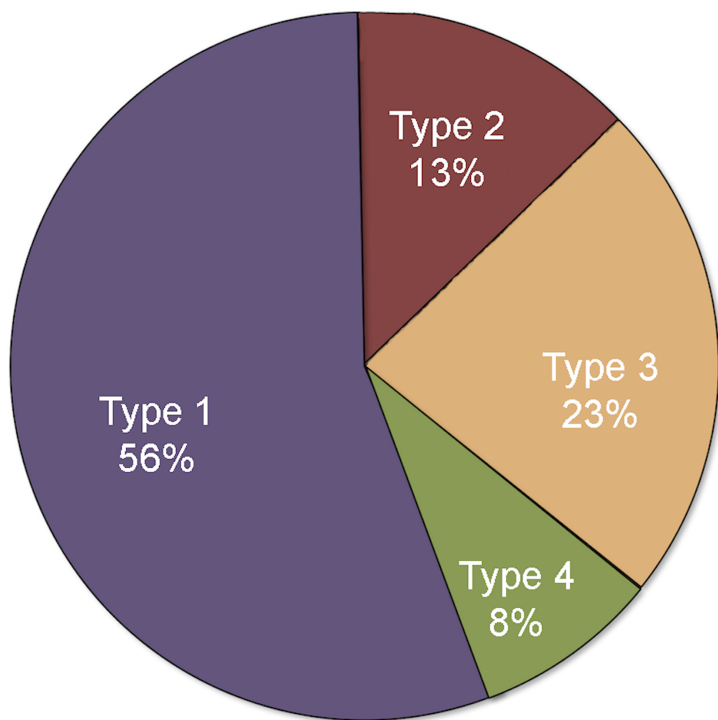
Type 1 “Regular papilla”- Most common type with no distinctive features “classic appearance.” Type 2 “Small papilla”- Small, often flat with a diameter not bigger than 3 mm (approx. 2 sphincterotome diam). Type 3 “Protruding or pendulous papilla”- A papilla that is protruding or bulging into the duodenal lumen sometimes hanging down, pendulous with the orifice oriented caudally. Type 4 “Creased or ridged papilla”- The ductal mucosa seems to extend distally out of the orifice either on a ridge or in a crease.

### **Figure 2. Distribution of the different papilla types**

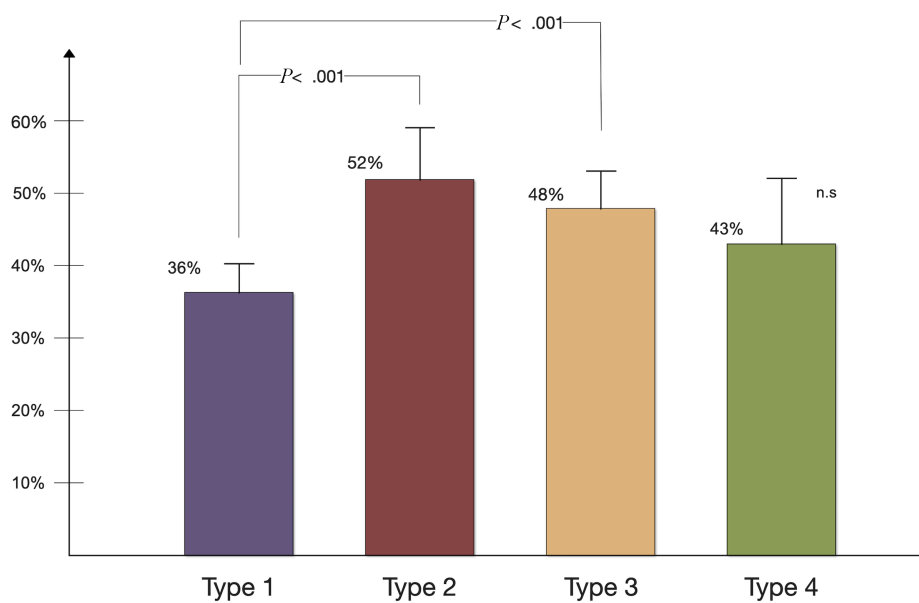
### **Figure 3. Frequency of difficult cannulation distributed among the different papilla types (95% CI)**







ACCEPTED MANUSCRIPT



## Acronyms and abbreviations

ERCP=Endoscopic retrograde cholangiopancreatography

95% CI = 95% confidence interval

SADE= Scandinavian Association of Digestive Endoscopy

ESGE= European Association of Gastrointestinal Endoscopy

NSAIDs= Non-steroid anti-inflammatory Drugs

PEP= Post-ERCP pancreatitis

OR= Odds Ratio

IQR = Inter quartile range

ACCEPTED MANUSCRIPT

Authors contribution

Erik Haraldsson, M.D,

*Active and leading in all aspects of the production, designing and conceptualizing this work. Wrote the drafts for the manuscript. Finalized and approved the final manuscript after thorough review of the fellow co-authors. Analyzed the data.*

Leena Kylänpää, M.D, Ph.D, Ass. Prof

*Made a substantial contribution to the conception and design of the work. Great contribution in the acquisition, analysis, and interpretation of the data. Critically revised drafts of the manuscript and approved the final version.*

Juha Grönroos, M.D, Ph.D, Prof.

*Made a substantial contribution to the design of the work. Great contribution in the acquisition, analysis, and interpretation of the data. Critically revised drafts of the manuscript and approved the final version.*

Arto Saarela, M.D, Ph.D, Ass. prof

*Made a substantial contribution to the design of the work. Great contribution in the acquisition, analysis, and interpretation of the data. Critically revised drafts of the manuscript and approved the final version.*

Ervin Toth, M.D, Ph.D, Ass. prof

*Made a substantial contribution to the design of the work. Great contribution in the acquisition, analysis, and interpretation of the data. Critically revised drafts of the manuscript and approved the final version.*

Gunnar Qvigstad, M.D, Ph.D, Ass. prof

*Made a substantial contribution to the design of the work. Great contribution in the acquisition, analysis, and interpretation of the data. Critically revised drafts of the manuscript and approved the final version.*

Mari Hult, M.D,

*Substantial contribution in the acquisition of the data. Critically revised drafts of the manuscript and approved the final version.*

Outi Lindström, M.D, Ph.D,

*Substantial contribution in the acquisition of the data. Critically revised drafts of the manuscript and approved the final version.*

Simo Laine M.D, Ph.D,

*Substantial contribution in the acquisition of the data. Critically revised drafts of the manuscript and approved the final version.*

Heikki Karjula M.D, Ph.D,

*Substantial contribution in the acquisition of the data. Critically revised drafts of the manuscript and approved the final version.*

Truls Hauge, M.D, Ph.D, Ass. prof

*Made a substantial contribution to the design of the work. Great contribution in the acquisition, analysis, and interpretation of the data. Critically revised drafts of the manuscript and approved the final version.*

Riadh Sadik, M.D, Ph.D, Ass. prof

*Made a substantial contribution to the design of the work. Great contribution in the acquisition, and interpretation of the data. Critically revised and approved the final manuscript.*

Urban Arnelo, M.D, Ph.D, Ass. prof

*Leading in the conception and design of the work. Active and leading in all aspects of the production of this work. Revised and drafted the manuscript for important intellectual content. Corrected and approved the final manuscript. Great effort in the acquisition, analysis and interpretation of the data.*

*All authors agree to be accountable for all aspects of the work.*