

RESEARCH ARTICLE

Open Access



Early exposure to social disadvantages and later life body mass index beyond genetic predisposition in three generations of Finnish birth cohorts

Estelle Lowry^{1,2,3†}, Nina Rautio^{1,4*†}, Niko Wasenius^{5,6}, Tom A. Bond⁷, Jari Lahti^{8,9}, Ioanna Tzoulaki^{7,10}, Abbas Dehghan¹¹, Anni Heiskala¹, Leena Ala-Mursula¹, Jouko Miettunen^{1,12}, Johan Eriksson^{5,6,13,14}, Marjo-Riitta Järvelin^{1,7} and Sylvain Sebert^{1,2,15}

Abstract

Background: The study aimed to explore the association between early life and life-course exposure to social disadvantage and later life body mass index (BMI) accounting for genetic predisposition and maternal BMI.

Methods: We studied participants of Helsinki Birth Cohort Study born in 1934–1944 (HBCS1934–1944, $n = 1277$) and Northern Finland Birth Cohorts born in 1966 and 1986 (NFBC1966, $n = 5807$, NFBC1986, $n = 6717$). Factor analysis produced scores of social disadvantage based on social and economic elements in early life and adulthood/over the life course, and was categorized as high, intermediate and low. BMI was measured at 62 years in HBCS1934–1944, at 46 years in NFBC1966 and at 16 years in NFBC1986. Multivariable linear regression analysis was used to explore associations between social disadvantages and BMI after adjustments for polygenic risk score for BMI (PRS BMI), maternal BMI and sex.

Results: The association between exposure to high early social disadvantage and increased later life BMI persisted after adjustments ($\beta = 0.79$, 95% CI, 0.33, 1.25, $p < 0.001$) in NFBC1966. In NFBC1986 this association was attenuated by PRS BMI ($p = 0.181$), and in HBCS1934–1944 there was no association between high early social disadvantage and increased later life BMI ($\beta 0.22$, 95% CI $-0.91, 1.35$, $p = 0.700$). In HBCS1934–1944 and NFBC1966, participants who had reduced their exposure to social disadvantage during the life-course had lower later life BMI than those who had increased their exposure ($\beta - 1.34$, $[-2.37, -0.31]$, $p = 0.011$; $\beta - 0.46$, $[-0.89, -0.03]$, $p = 0.038$, respectively).

Conclusions: High social disadvantage in early life appears to be associated with higher BMI in later life. Reducing exposure to social disadvantage during the life-course may be a potential pathway for obesity reduction.

Keywords: Early life, Social disadvantage, Body mass index (BMI), Maternal, Polygenic risk score for BMI

* Correspondence: nina.rautio@oulu.fi

†Estelle Lowry and Nina Rautio contributed equally to this work.

¹Center for Life Course Health Research, University of Oulu, P.O.Box 5000, Fin-90014, Oulu, Finland

⁴Unit of Primary Health Care, Oulu University Hospital, P.O.Box 10, 90029 OYS Oulu, Finland

Full list of author information is available at the end of the article



© The Author(s). 2020 **Open Access** This article is licensed under a Creative Commons Attribution 4.0 International License, which permits use, sharing, adaptation, distribution and reproduction in any medium or format, as long as you give appropriate credit to the original author(s) and the source, provide a link to the Creative Commons licence, and indicate if changes were made. The images or other third party material in this article are included in the article's Creative Commons licence, unless indicated otherwise in a credit line to the material. If material is not included in the article's Creative Commons licence and your intended use is not permitted by statutory regulation or exceeds the permitted use, you will need to obtain permission directly from the copyright holder. To view a copy of this licence, visit <http://creativecommons.org/licenses/by/4.0/>. The Creative Commons Public Domain Dedication waiver (<http://creativecommons.org/publicdomain/zero/1.0/>) applies to the data made available in this article, unless otherwise stated in a credit line to the data.

Background

Obesity continues to be a major threat to public health resources [1]. The Global epidemic of obesity is driven by shared societal determinants and appear to have the greatest effect on the poorest people [2]. Current economic systems are promoting excessive and unsustainable consumption patterns, which are reflected in the rising obesity levels worldwide [2]. Therefore, there is an urgency to address the continuing challenge of obesity in terms of biological and social risks in early life. In simplest terms, it may seem as though the rising obesity prevalence is due to environmental exposures such as excessive energy intake, sedentary lifestyles, [3] and sleep debt [4]. However, it appears to manifest preferentially in genetically predisposed individuals [5] suggesting a more complex interaction between hereditary/genetic and environmental risk factors [6].

Accumulating evidence supports an important role for social factors in early life that may be equally, if not more important than adult social factors in predisposing to adult obesity [7–10]. A previous study of Northern Finland Birth Cohort 1966 showed that differences in BMI by social class were formed at least partly during early childhood and a high maternal pre-pregnancy BMI was predictive of obesity in adulthood among the offspring [11]. Since then, early social disadvantage has been continually linked to later obesity [7–9]. One study also reported that higher genetic risk and low socio-economic status were associated with higher BMI in pre-adolescent individuals [12]. We hypothesised that a higher genetic risk for obesity may already be present at birth in the most socially disadvantaged groups (Additional File 1, Fig. 1). However, it is still unclear whether the association between early social disadvantage and later life obesity is direct or due in part to the inheritance of genetic risk and/or other maternal risk factors. Further complicating this relationship is the concept of social mobility, in which people can move up or down the social hierarchy throughout the life-course. Previous research has shown the direction of mobility to be accompanied by improvement or worsening of health, and likewise changes in health can often be related to fluctuations in social circumstances [13, 14]. Therefore, more information is needed on whether the association between early social disadvantage and later obesity can be modified by the process of social mobility during the life-course [13].

In this study, we aimed to test whether i) early exposure to social disadvantage is related to later life body mass index (BMI) and other measures of body composition, ii) the relationship between early exposure to social disadvantage and later life BMI and body composition can be explained by higher genetic predisposition or maternal BMI and iii) reduction in social disadvantage during the life-course is associated with a

lower BMI and other measures of adiposity in adulthood. Finally, we used three generations of birth cohorts in Finland to replicate the study during different historical phases of the obesity epidemic.

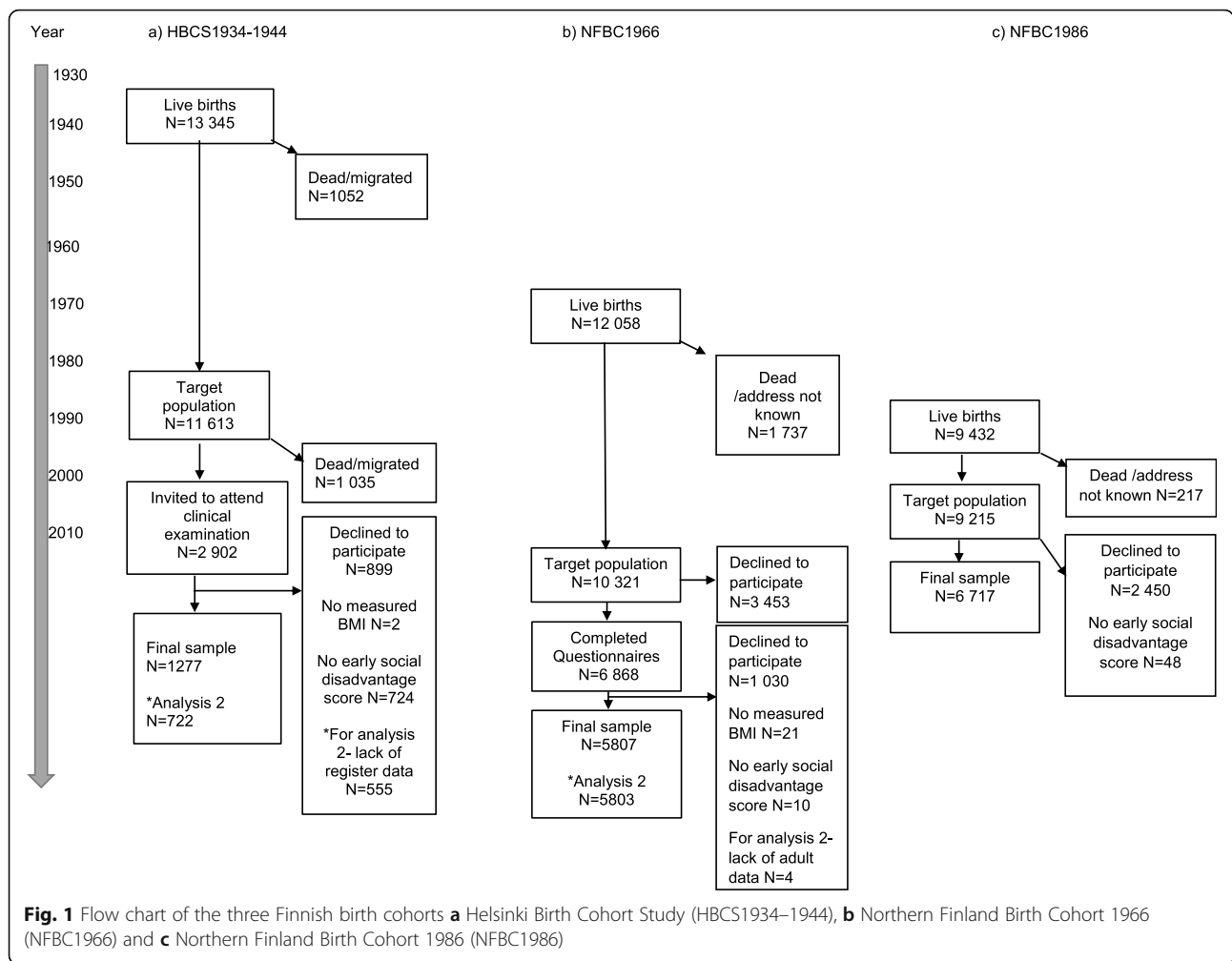
Methods

The study population comprised participants from the Helsinki Birth Cohort Study (HBCS1934–1944) [15] and Northern Finland Birth Cohorts 1966 (NFBC1966) and 1986 (NFBC1986), [16], which are population-based birth cohorts.

HBCS1934–1944 comprised a total of 13,345 live-born children between 1934 and 1944 at Helsinki University Central Hospital or the Helsinki City Maternity Hospital and they were identified and followed through to present day using register data [17]. Children attended child welfare clinics voluntarily and those, who were alive and living in Finland in 1971, received a unique personal identity number (ID). Information on pregnancy and early life was gathered from hospital records and child welfare clinics. ID numbers were used to link the data to national registers. Clinical examinations were conducted on a random sample of 2003 individuals, at a mean age of 62 years between 2001 and 2004, and for 2001 of those individuals, the primary outcome, i.e. measured BMI was available. The present study used the 1277 individuals with measured BMI and early life social disadvantage score in the analysis examining early life exposure to social disadvantage with adulthood BMI. In the second analysis examining social mobility, a sample size of 722 participants had both adult register and clinical data (Fig. 1). The clinical study protocol was approved by the Ethics Committee of Epidemiology and Public Health of the Hospital District of Helsinki and Uusimaa.

NFBC1966 included 12,058 live-born children (96.3% of all births) during 1966 in the two former northern provinces of Finland, Oulu and Lapland [18]. The current analysis focuses on information provided during pregnancy and the latest 46-year follow-up, which was conducted between April 2012 and February 2014. Of the 10,321 eligible individuals at age 46-years, 5817 individuals had the primary outcome measure, i.e. measured BMI and the present study used the 5807 individuals with information concerning early life exposure and BMI (Fig. 1).

NFBC1986 consisted of 9432 live-born children between 1st of July 1985 and the 30th of June 1986 also in the former provinces of Oulu and Lapland (98.5% of all births) [16]. The data used in this study was collected during pregnancy and at age 16 years by clinical examination. Of 9215 eligible individuals at age 16 years, 6765 individuals had our primary outcome measure, measured BMI, in 2001. Overall, 6717 individuals had information concerning early life



social disadvantage and BMI (Fig. 1). NFBC1966 and NFBC1986 were approved by the Ethics Committee of the Northern Ostrobothnia Hospital District.

Social disadvantage measures used in factor scores

Parental data were used to quantify individuals’ early life exposure to social disadvantage. In HBCS1934–1944, information was obtained from hospital records, child welfare clinics and school health care records. All social disadvantage measures at mean age 44 years (range 41–51 years) in 1985 were based on national registers from Statistics Finland. In NFBCs, information concerning parental social disadvantage was obtained from questionnaires during pregnancy. At 46 years, social disadvantage measures in NFBC1966 were taken from postal questionnaire, only occupation was obtained from the national register received from Statistics Finland in 2013. In NFBC1986 social disadvantage scores were not computed at 16-year follow-up, as these would still have been reflective of the parent’s situation.

In order to create a composite measure of social disadvantage during early life and adulthood, we used a systematic approach for variable selection as described previously in [19]. Following an inventory of available variables in each dataset, we selected all those, which were

- an indicator of social disadvantage (a lack of social and economic resources) based on previous literature and a priori knowledge.
- associated with the primary outcome of later life body mass index (BMI) ($p < 0.05$).

The same steps were followed to create a social disadvantage measure in early life and adulthood within HBCS1934–1944 and NFBC1966, and in NFBC1986 during early life only as adult follow-up data is not yet available.

All available indicators of social disadvantage (Criteria 1) are listed in the Additional file 1, Tables 1A-C. The final selected variables for the composite score (meeting

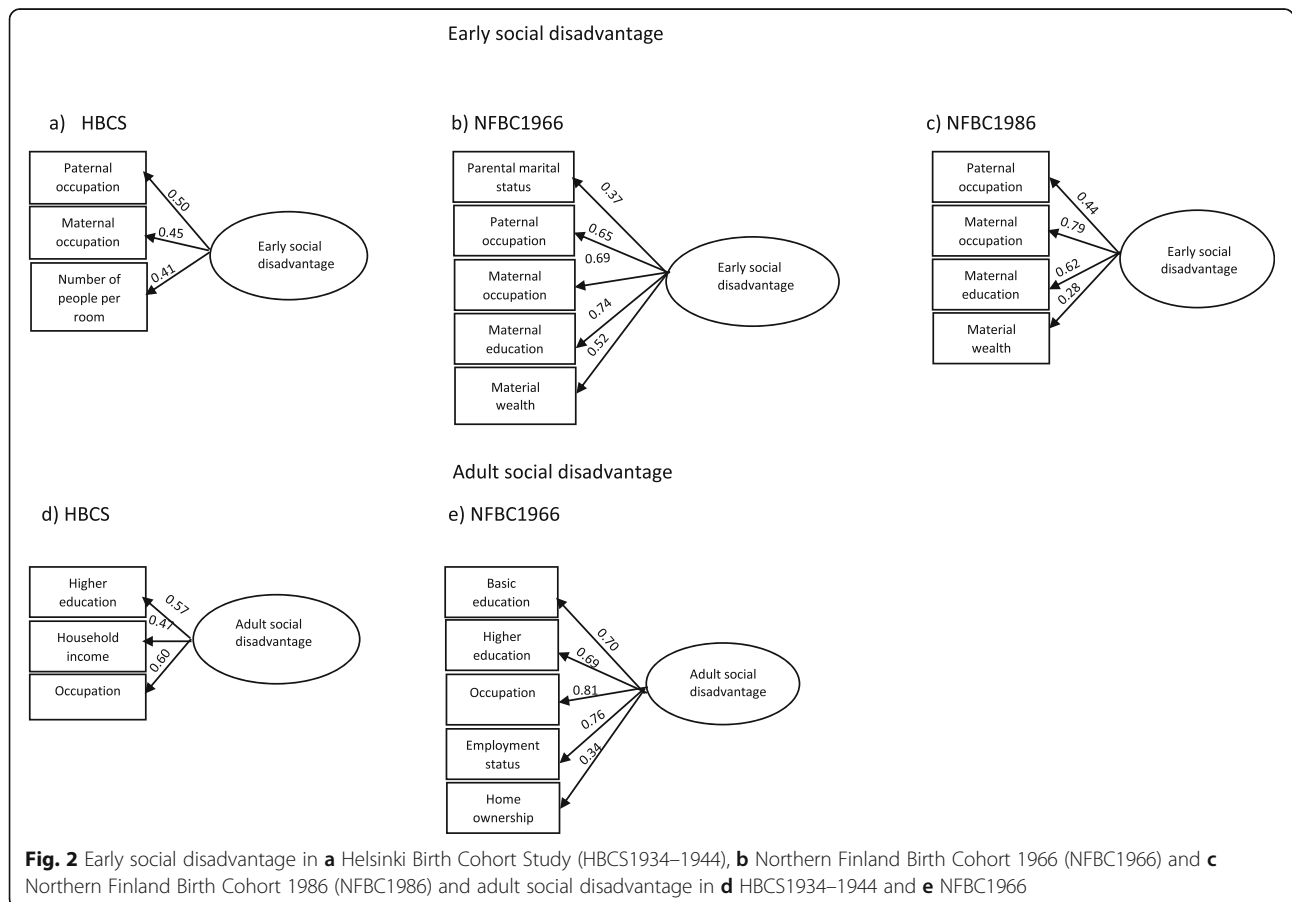
Criteria 2) are as follows; In HBCS1934–1944 early life social disadvantage was represented by paternal and maternal occupation and number of people per room. In adulthood, variables were higher education, household income and occupation. In NFBC1966 early life social disadvantage meeting all criteria was represented by parental marital status, paternal occupation, maternal occupation, maternal education and material wealth. Material wealth was a constructed variable including apartment/house ownership, car ownership and whether the family’s dwelling had electricity, telephone, running water and television. Adulthood social disadvantage variables were basic education, higher education, occupation, employment status and home ownership. In NFBC1986 early life social disadvantage was represented by paternal occupation, maternal occupation, maternal education and material wealth. Material wealth was a constructed variable including ownership of apartment/house, summer cottage, car, automatic washing machine, telephone, central heating, flushing toilet and a separate bathroom. Full information on original categorisations and re-categorizations are presented in Additional file 1, Table 2.

Following variable selections (Additional file 1, Tables 1A-C), confirmatory factor analysis (CFA) was

used to produce a single factor score to reflect social disadvantage during the early life in all three cohorts and at a point in adulthood in HBCS1934–1944 and NFBC1966 (Fig. 2). The scores were divided into quartiles with the highest 25% representing high social disadvantage, and the lowest 25% representing low social disadvantage. Participants were defined as having reduced social disadvantage in NFBC1966 and HBCS1934–1944 if they moved to a lower social disadvantage category between the two time points, stable if there was no movement and increased social disadvantage if they moved to a higher social disadvantage category.

Body mass index and other measures of body composition

At approximately 62 years of age in HBCS1934–1944, 46 years in NFBC1966 and 16 years in NFBC1986 individuals were invited to clinical examinations conducted by trained research nurses. Weight (kg) and height (cm) were measured from participants in light indoor clothing without shoes. BMI (kg/m²) was calculated as weight (kg) divided by height (m²) squared. Overweight was defined as BMI ≥25 kg/m² and obesity as BMI ≥30 kg/m². Additionally, we assessed waist circumference (WC),



body fat percentage (BFP) and visceral fat area (VFA) in NFBC1966. Waist circumference (cm) was measured from the point midway between the costal margin and iliac crest. Body fat (%) and visceral fat area (cm²) were measured by bio-impedance using InBody 720.

Covariates

Known early life risk factors for obesity were used as covariates. In HBCS1934–1944, maternal weight (kg) and height (cm) data were taken from hospital records at the time when women came to the hospital to deliver. In NFBCs, maternal weight and height before pregnancy were derived from questionnaires and maternal BMI was calculated as described earlier.

We calculated a polygenic risk score for BMI (PRS BMI) for each HBCS1934–1944, NFBC1966 and NFBC1986 individual as a weighted sum of BMI-increasing alleles at genome-wide single nucleotide polymorphisms (SNPs). Genotype quality control for NFBC1966 is presented in Additional file 1, text 1. For SNP weights we used the beta coefficients estimated by the BOLT-LMM model using the “--predBetasFile” flag in the BOLT-LMM software package [20]. We estimated BOLT-LMM SNP effects in the UK Biobank (UKB), a prospective cohort of 502,628 volunteers recruited across the UK at age 40–69 years through United Kingdom National Health Service registers [21, 22]. To calculate PRS we used PRSice version 2.1.3.beta [23], which automatically harmonises the base (UKB) and target (HBCS1934–1944, NFBC1966, NFBC1986) data sets and removes ambiguous (A/T and C/G) SNPs, and calls the plink --score function [24]. More detailed information in Additional file 1, text 1.

Statistical analysis

Information from study participants was used to create the composite social disadvantage score and assign the exposure of individuals to high, intermediate or low social disadvantage. We selected our core study sample for each cohort based on those who had an early life social disadvantage score and measured BMI at the relevant age. Descriptive statistics were generated for explanatory and outcome measures and distributions were examined for normality. Skewed variables were logarithmically transformed. Univariable linear regression was used to assess the association of each explanatory variable with the primary outcome i.e. BMI at follow-ups.

In HBCS1934–1944 all analyses were conducted using Stata/MP 15.5 (StataCorp, 4905 Lakeway Dr., College Station, TX 77845, USA). In NFBCs factor analysis was conducted using Mplus 7.0 [25] and other analysis using SAS Enterprise 7.15 (2017, SAS Institute Inc. Cary, NC, USA). Mplus uses full information maximum likelihood method to estimate the model parameters in order to account for missing data [26]. In Stata, complete case analysis was used to create the factor scores within the HBCS1934–

1944. Factor scores were extracted and used in univariable and multivariable linear regression models to assess associations between social disadvantage and BMI and other measures of body composition. These models were adjusted for PRS BMI and ancestry principal components, maternal BMI and sex. In regression analysis, individuals without data for PRS BMI or maternal BMI were excluded so numbers were the same for each model allowing comparison.

Results

Population characteristics

In HBCS1934–1944, at a mean age of 62 years, mean BMI was 27.7 kg/m²(SD 4.8) and prevalence of overweight and obesity were 44.4 and 26.8%, respectively. At 46-years in the NFBC1966, mean BMI was 26.9 kg/m²(SD 4.9) and 39.4 and 21.4% were overweight and obese, respectively. In NFBC1986 at the age of 16-years, mean BMI was 21.2 kg/m²(SD 3.5) (Table 1) and 8.9 and 2.7% were overweight and obese, respectively. Additionally, there were no difference in early life exposure to social disadvantage in those who attended the later follow-up and those who did not in both NFBC1966 ($p = 0.19$) and NFBC1986 ($p = 0.36$) [results not shown in main tables]. The retrospective design of the HBCS1934–1944 does not allow a measure of non-participation according to early exposure. As shown in Fig. 1, the absence of measures of early social disadvantage created attrition in the final sample.

In HBCS1934–1944, individuals exposed to high early social disadvantage also had the highest mean BMI in later life (Table 2). In the more recent NFBCs, later life BMI was related to early life social disadvantage in a gradual manner with the highest social disadvantage group having the highest BMI. Maternal BMI was also highest in the group exposed to high early social disadvantage in both NFBCs. Importantly, we observed a difference in the PRS BMI scores in all cohorts, indicating that individuals exposed to high early social disadvantage had increased genetic predisposition for greater BMI (Fig. 3). In NFBC1966, high early social disadvantage was also associated with high later life VFA (Additional file 1, Table 3). In women, a similar relationship was observed for WC and BFP, but not in men (Additional file 1, Table 3).

The PRS BMI explained 10–12% of the total variation in later life BMI when adjusted for sex in all cohorts (Fig. 4). Due to differences in PRS BMI between social disadvantage groups, we also controlled for population stratification by adjusting the top five principal components in NFBC1966 [27] and four multidimensional-scaling coordinates in NFBC1986.

Association of early life social disadvantage with later life body mass index and other measures of adiposity

In HBCS1934–1944, despite observing a trend for higher adult BMI in those exposed to high early life social

Table 1 Descriptives for HBCS1934–1944, NFBC1966 and NFBC1986

	HBCS1934–1944 (n = 766–1277)	NFBC1966 (n = 5803–5807)	NFBC1986 (n = 6717)
Sex			
Men	577 (45)	2553 (44)	3317 (49)
Women	700 (55)	3254 (56)	3400 (51)
BMI 16 (kg/m ²)	–	–	21.19 (3.50)
BMI 46 (kg/m ²)	–	26.86 (4.90)	–
BMI 62 (kg/m ²)	27.7 (4.81)	–	–
Maternal BMI (kg/m ²)	26.5 (2.9)	23.16 (3.18)	22.33 (3.38)
PRS BMI ^a	0.003 (1.00)	8.62 ⁻¹⁵ (1.00)	0.006 (1.00)
Change in Social Disadvantage			
Stable SD	322 (42)	2535 (44)	–
Reduced SD	196 (26)	1426 (25)	–
Increased SD	248 (32)	1842 (32)	–

^aPRSBMI = in polygenic risk score for body mass index standardized values used

disadvantage, these individuals were not found to be at greater risk of increased BMI (β 0.22, 95% CI $-0.91, 1.35$) compared to those with low early social disadvantage (Fig. 5). However, exposure to high (β 0.79, 95% CI 0.33, 1.25) or intermediate early life social disadvantage (β 0.54, 95% CI 0.07, 0.84) was related to higher later life BMI even after full adjustments in NFBC1966 (Fig. 5). In the youngest cohort, NFBC1986, the association between high (β 0.29, 95% CI $-0.01, 0.58$) and intermediate early social disadvantage (β 0.23, 95% CI $-0.11, 0.58$) with higher later life BMI was attenuated with the addition of PRS BMI (Fig. 5).

In addition, results concerning early exposure to social disadvantage and later life VFA were similar to later life BMI in NFBC1966 (Additional file 1, Table 4). Sex-specific analyses for later life WC and BFP showed contrasting results. Women exposed to high or intermediate early social disadvantage were at greater risk of higher WC and BFP in adulthood after adjustments. Conversely, in men early social disadvantage was not associated with adult WC or BFP (Additional file 1, Table 5).

Social mobility and its association with later life body mass index and other measures of adiposity

In HBCS1934–1944, we observed that 42.0% of individuals ($n = 322$) remained stable in their lifecourse exposure to social disadvantage, 25.6% ($n = 196$) were upwardly mobile and the remaining 32.4% ($n = 248$) were downwardly mobile. In NFBC1966, corresponding figures were 43.7% ($n = 2535$), 24.6% ($n = 1426$) and 31.7% ($n = 1842$), respectively. In HBCS1934–1944, there was no difference in social mobility between sexes. In NFBC1966, a greater proportion of women were found to remain stable (25.2%) or show upward mobility (16.6%) compared to men (18.5, 8.0%, $p < 0.001$,

respectively). There was no difference in maternal BMI or PRS BMI according to social mobility in either cohort.

In both HBCS1934–1944 and NFBC1966, participants showing upward social mobility over the lifecourse had lower later life BMI after adjustment for all covariates (Fig. 5). Additional file 1, Tables 6–7 show results on other measures of adiposity in NFBC1966. Women showing upward social mobility during the lifecourse also had lower later life WC and BFP after adjustments (Additional file 1, Table 7).

Discussion

In this longitudinal study of three generations of birth cohorts, we found that participants exposed to high and intermediate social disadvantages in early life had higher BMI in later life than those who had been born into families with low social disadvantage. In NFBC1966, this association persisted following adjustment for PRS BMI (as well as principal components, in order to control for population stratification), maternal BMI and sex. However, in NFBC1986 the association was attenuated by the adjustment for PRS BMI. We observed a similar trend in HBCS1934–1944 for higher later life BMI in the group exposed to high early social disadvantage. Furthermore, individuals showing upward social mobility during the lifecourse had lower later life BMI compared to individuals with downward social mobility based on findings in our two adult cohorts (HBCS1934–1944 and NFBC1966).

These three birth cohorts reflect changes in the socio-historical context which may explain the trends we are observing. When individuals in the oldest birth cohort were born (1934–1944), Finland was an agricultural society. At this time, food was scarce as they moved from the Great Depression into a period of war when groceries were rationed. During the 1960's, Finland was transitioning into an industrial economy, characterised by urbanization and mass

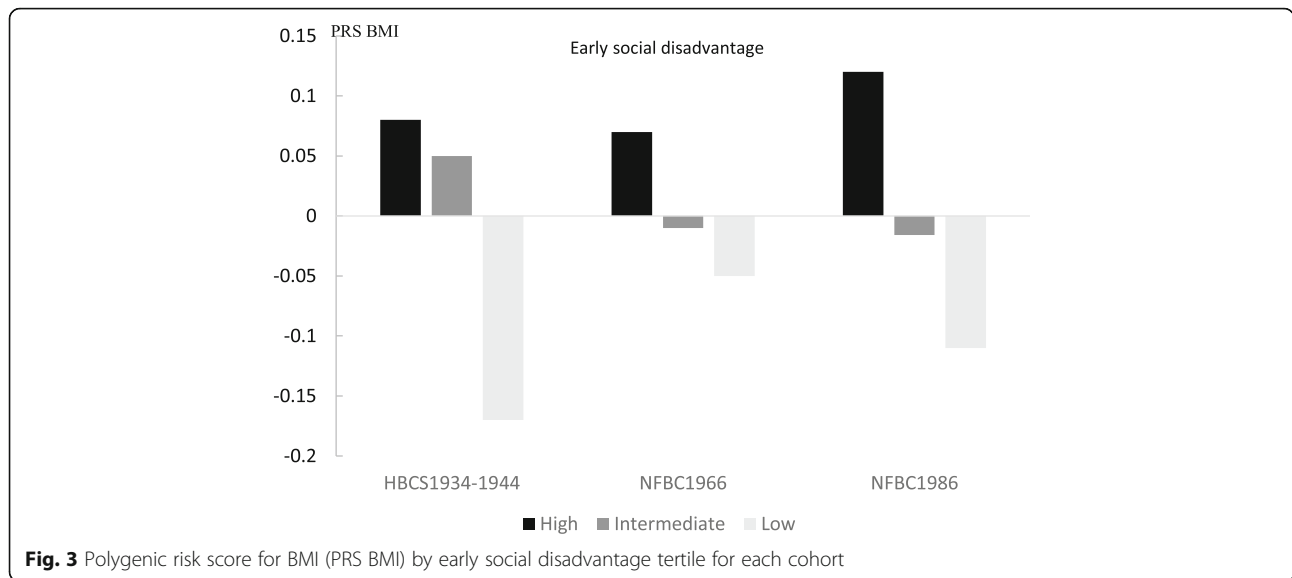
Table 2 Descriptives by early social disadvantage in Helsinki Birth Cohort 1934–1944 (HBCS1934–1944), Northern Finland Birth Cohort 1966 (NFBC1966) and Northern Finland Birth Cohort 1986 (NFBC1986)

	HBCS1934–1944				NFBC1966				NFBC1986			
	Early social disadvantage				Early social disadvantage				Early social disadvantage			
	High	Intermediate	Low		High	Intermediate	Low		High	Intermediate	Low	
	n	%	n	%	n	%	n	%	n	%	n	%
BMI	398	31	561	44	318	25	1463	25	1463	25	1444	25
	\bar{x}	sd	\bar{x}	sd	\bar{x}	sd	\bar{x}	sd	\bar{x}	sd	\bar{x}	sd
	28.2	5.5	27.4	4.5	27.7	4.3	0.046	1463	27.3	5.0	2900	26.8
	3.1	0.014	3.1	0.014	3.1	0.014	3.1	0.014	3.1	0.014	3.1	0.014
Mat BMI	366	26.6	3.0	508	26.5	2.8	273	26.5	3.2	0.67	1276	23.7
	3.2	0.67	3.2	0.67	3.2	0.67	3.2	0.67	3.2	0.67	3.2	0.67
Sex	n	%	n	%	n	%	n	%	n	%	n	%
Men	176	31	236	41	165	29	619	42	1254	43	680	47
Women	222	31	325	46	153	22	844	58	1646	57	764	53

^aBMI was measured at age of approximately 62 years in HBCS1934–1944, 46 in NFBC1966 and 16 in the NFBC1986

^bMat BMI = maternal body mass index measured during late pregnancy in HBCS1934–1944

^cPRS BMI = in polygenic risk score for body mass index standardized values used



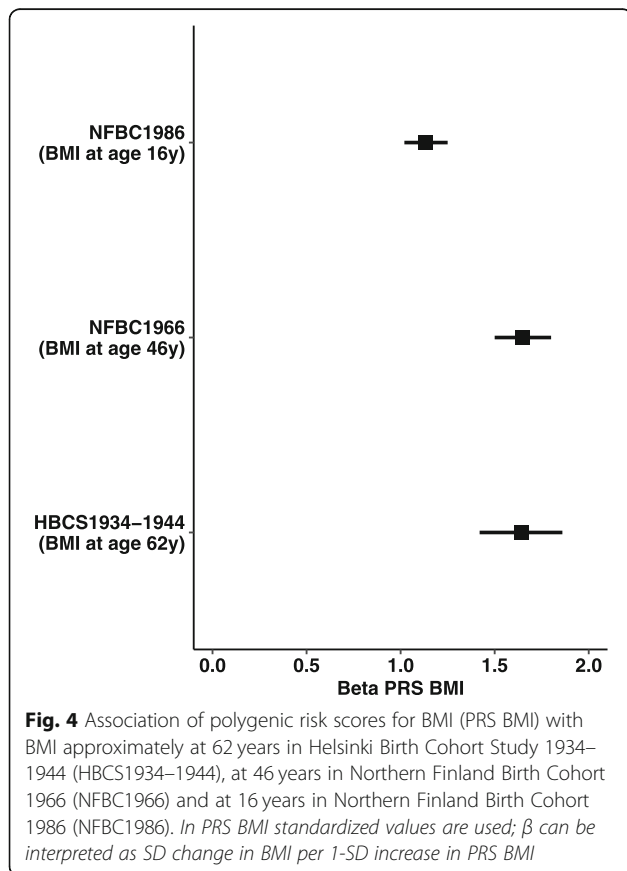
migration. When the youngest birth cohort was born in the 1980's, Finland was living in an economic boom and becoming a consumer nation [28].

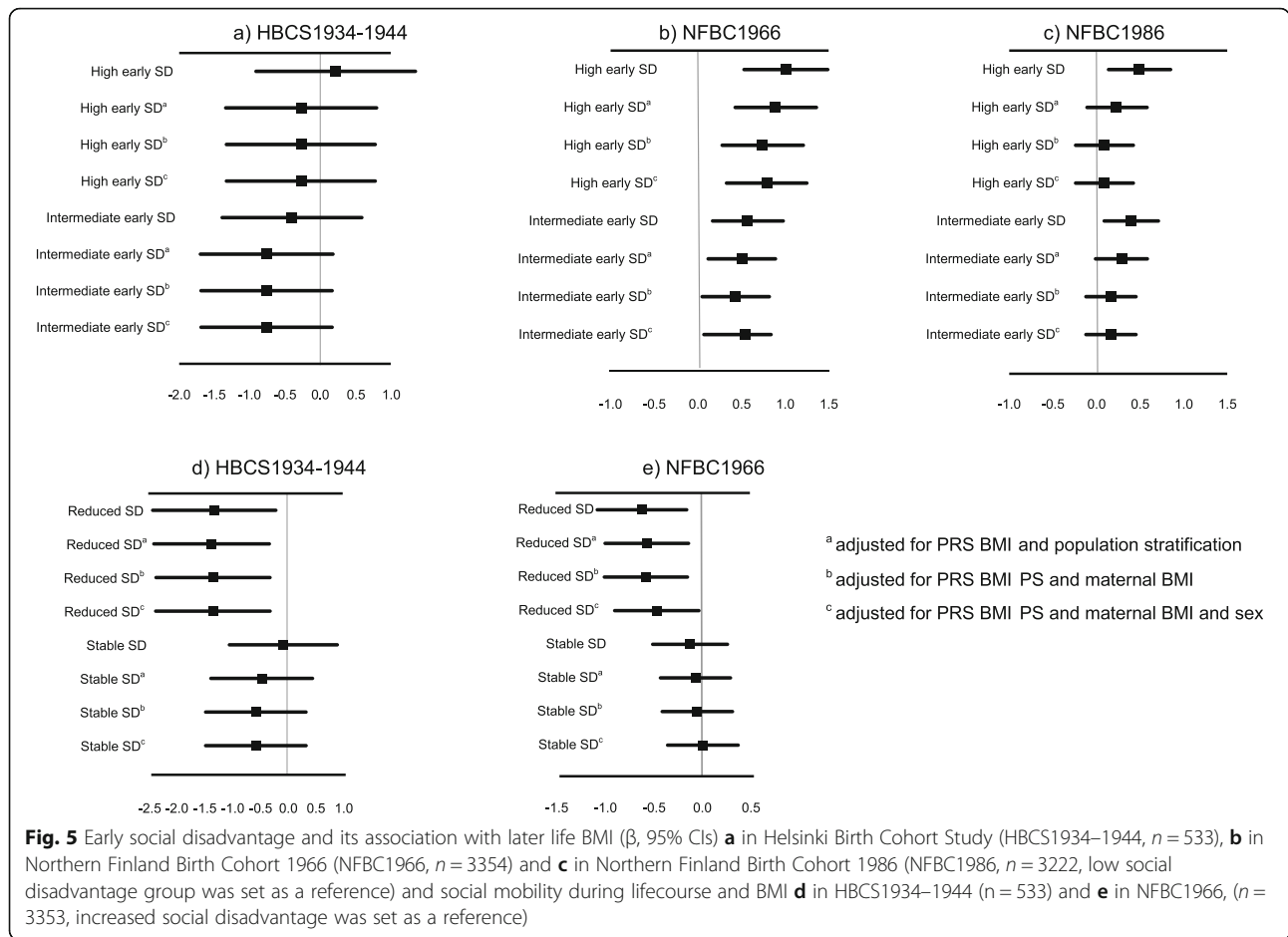
A previous study on seven population-based surveys from six countries showed that in cohorts born between

1910 and 1961, women from manual childhood backgrounds had an elevated risk of obesity in adulthood, although it was attenuated in two studies after adjustment for adult socioeconomic position. Among men, the association with childhood position was mostly in the same direction, although effects were weaker [29], which is consistent with what we observed in HBCS1934–1944.

NFBC1966 showed the most robust association between early social disadvantage and later life BMI, which is also consistent with previous reports showing the importance of occupational social class of the head of household in early life and risk for adult obesity [30] even after adjustment for parental BMI in men [9]. Additionally, our results on early social disadvantage and adult VFA (Additional file 1, Table 4) and adult WC and BFP in women showed similar trends to that of BMI (Additional file 1, Table 5).

In our youngest cohort included in the study (NFBC1986) the association between early social disadvantage and later life BMI was attenuated after adjusting for genetic predisposition to higher BMI. Interestingly, we also found that in all cohorts the PRS BMI was not equally distributed at birth and was highest in individuals born into the group with highest early life social disadvantages. This may be partly explained by social selection [31], meaning that parents' of the participants with higher genetic predisposition to higher BMI may have already drifted to lower social positions and have difficulties in rising to higher social positions. There is also evidence that individuals tend to seek the company of people, who have similar characteristics than their own e.g. for example marrying people of the same level of educational attainment [32]. These two observed trends of unequal distribution of PRS BMI at birth and stronger effect of genetic risk through time strongly





suggest that the current obesogenic environments may be promoting the vicious cycle between low social class and poor health outcomes. We found one other similar study which has demonstrated interaction between genetic influence and socio-economic status in change in BMI across adolescence [12]. Finally, it could be hypothesised that BMI may exert a causal influence on psychosocial factors which may in turn contributed to the observed association. This may be consistent with the finding that obesity may be causally associated to smoking [33] and future research based on multivariate mendelian randomisation with very large sample size, for example, may help elucidating the observed associations.

Individuals born in the two oldest cohorts with reduced exposure to social disadvantage during their lifecourse, also had lower BMI compared to individuals with increased exposure to social disadvantage. This is in line with previous studies in women which have also shown that upward mobility from low social origins to higher position during the lifecourse have decreased the risk for obesity compared to those with a stable situation [34, 35]. Therefore, a society's degree of social mobility

is important, for example in immobile societies an individual's education is strongly related to their parent's education [36].

It has not been possible to test the pathways of effect between high early social disadvantage and later life BMI in the present study. However, we would speculate that underlying factors such as stress [37], nutrition in infancy and childhood, psychological factors such as emotional deprivation and social norms regarding dietary factors and obesity [10] may be involved. Furthermore, it has been shown that childhood social disadvantage was related to smoking and excess alcohol intake in later life [38] and therefore could foster other unhealthy lifestyle behaviors leading to obesity.

Strengths of our study include the use of longitudinal or register-based measures of social disadvantage in early life and adulthood to avoid recall bias and construct comprehensive measures of social disadvantage reflecting different social variables [8]. Previously, early social disadvantage has been solely based on a single variable, generally father's occupation. We have already demonstrated with the initial step in our variable selection strategy that there are a number of variables associated

with later life BMI and potentially acting via different pathways of effect. Therefore, we wanted to capture the complexities of social construct by composing a composite variable. Use of this tested systematic strategy allows comparison between different datasets and time points as the selection process is carried out for each composite measure and thus accounts for differences in variable importance over time and by region. This study also examines the relationship between early social disadvantage and later life obesity in three different birth cohorts, which is especially valuable given the trends of intergenerational transmission of obesity and impact of maternal obesity [39, 40]. Additionally, we were able to use objective measures of body composition, including VFA, WC and BFP in the NFBC1966 in addition to BMI, which has been criticized for not differentiating between body lean mass and body fat mass [41].

We do acknowledge that our study has some limitations. Although the use of three separate cohorts allows us the opportunity to study trends and replicate findings, there are also challenges with harmonisation. HBCS1934–1944 used a retrospective identification of participants based on birth records and subsequent follow-up was primarily via register-based data. Due to availability of funding, a small random sample was invited to attend a clinical examination in later life which resulted in a considerably smaller number of participants included in the present study, particularly in analysis of social mobility. Participants of the cohorts were of different ages at the time of the measurement of BMI and maternal BMI was measured during late pregnancy in the HBCS1934–1944 and not in pre-pregnancy as in NFBCs. We did not conduct meta-analysis due to these differences and high expected heterogeneity of the studies [42]. Whilst the PRS for BMI explained only about 10–12% of variation of BMI, this is expected with the methodology used and similar to the variation explained in similar studies [43]. In addition, we have used ranking of participants within their study populations in order to compare how their position within society has changed over time, however we have not been able to account for changes in environment during this period, which is an inherent limitation of longitudinal studies exploring social factors. Social mobility was not available in NFBC1986 as adult data is not yet available for this cohort.

We conducted sensitivity analyses for NFBC1966 data using only the early social disadvantage measures used in the HBCS1934–1944 (instead of number of persons in room we used material wealth: home ownership, car, electricity, telephone, running water and television). After adjustment for PRS BMI the association between high early social disadvantage and BMI was still significant, but intermediate exposure was no longer associated with later life BMI. It may be that the effect of early

social disadvantage on later BMI is better captured with a range of variables. We used a systematic approach for variables selection and reduction according to the association of the social variables and later BMI. This approach allowed us to reduce the number of variables included in the factor score, which can also improve the interpretability as well as replicability across cohorts. We must acknowledge that this process may remove some variables that may contribute to latent factors and further research, probably based in only one cohort should explore other methods to include more social factors that may influence the risk of obesity.

Conclusions

Our results based on three generations of birth cohorts showed that participants exposed to high social disadvantage in early life had a tendency towards higher BMI in later life. This association was most robust in the cohort born in the 1960's, withstanding adjustment for genetic predisposition and maternal BMI. The genetic effect was greatest on those born into a more obesogenic environment in the 1980s. Notably, our results based on the two adult cohorts showed that participants with reduced exposure to social disadvantage during the life-course had a lower BMI than those with increased exposure, suggesting a potential pathway for intervention.

Supplementary information

Supplementary information accompanies this paper at <https://doi.org/10.1186/s12889-020-08763-w>.

Additional file 1: Table 1A. Variable selection in Helsinki Birth Cohort Study 1934–1944 (✓ included, ✗ excluded). **Table 1B.** Variable selection in Northern Finland Birth Cohort 1966 (✓ included, ✗ excluded). **Table 1C.** Variable selection in Northern Finland Birth Cohort 1986 (✓ included, ✗ excluded). **Table 2.** Social disadvantage variables with their original categorizations and coding used within confirmatory factor analysis in early life in Helsinki Birth Cohort Study 1934–1944 (HBCS1934–1944), Northern Finland Birth Cohort 1966 (NFBC1966), and Northern Finland Birth Cohort Study 1986 (NFBC1986) and at age of 44-years in HBCS1934–1944 and 46-years in NFBC1966. **Text 1.** Genotype quality control for NFBC1966 and more detailed information concerning calculation of polygenic risk score for body mass index (BMI). **Table 3.** Association of early social disadvantage with visceral fat area (cm²), waist circumference (cm) and body fat (%) at 46-years in Northern Finland Birth Cohort 1966 (NFBC1966). **Table 4.** Association between early social disadvantage with visceral fat area (cm²) at age of 46-years in Northern Finland Birth Cohort 1966 (NFBC1966, *n* = 3294). Low social disadvantage was set as a reference group. **Table 5.** Associations between early social disadvantage with waist circumference (cm) and body fat (%) at age of 46-years in men and in women in Northern Finland Birth Cohort 1966 (NFBC1966). Low social disadvantage was set as a reference group. **Table 6.** Association of change in social disadvantage during the life-course with visceral fat area (cm²) at age of 46-years in Northern Finland Birth Cohort (NFBC1966, *n* = 3293). Increased social disadvantage was set as a reference group. **Table 7.** Association of change in social disadvantage during the lifecourse with waist circumference (cm) and body fat (%) at age of 46-years in men and women in Northern Finland Birth Cohort 1966 (NFBC1966). Increased social disadvantage was set as a reference group. **Figure 1.** Directed acyclic diagram (DAG) for the tested

association. We may hypothesise the association between exposure to early social disadvantage to be the result of co-existing pathways. This includes the possible interplay with the child polygenic risk score for BMI that might in part proxy some confounding effects of his/her parents' BMI.

Abbreviations

BFP: Body fat percentage; CFA: Confirmatory factor analysis; HBCS1934–1944: Helsinki Birth Cohort Study 1934–1944; ID: Personal identity number; NFBC: Northern Finland Birth Cohort; PC: Principal component; PRS: Polygenic risk score for body mass index; SNPs: Single nucleotide polymorphisms; UKB: UK Biobank; VFA: Visceral fat area; WC: Waist circumference

Acknowledgements

We thank all cohort members and researchers who participated in the study. We also wish acknowledge the work of the NFBC project center. The polygenic risk score for body mass index was calculated using data from UK Biobank under the applications 236 and 13436.

Authors' contributions

EL, NR, L A-M and SS designed research. EL, NW, AH, TB and JL performed the statistical analysis. EL and NR wrote paper. EL designed the statistical approach together with SS. EL and NR had primary responsibility for final content. All authors made substantial contributions to the interpretation of results and revising the manuscript. All authors reviewed and approved the final draft.

Funding

NFBC1966 received financial support from University of Oulu Grant no. 24000692, Oulu University Hospital Grant no. 24301140, ERDF European Regional Development Fund Grant no. 539/2010 A31592. This work was supported by the Academy of Finland [#268336] and the European Union's Horizon 2020 research and innovation program for the DynaHEALTH (under grant agreement No 633595), LifeCycle (under grant agreement No 733206), EUCANCONNECT (under grant agreement No 824989), LongITools (under grant agreement No 873749), and the JPI HDHL, PREcisE project, ZonMw the Netherlands no. P75416. T.A.B. is supported by the Medical Research Council (UK) [grant number: MR/ K501281/1]. The funders had no role in study design, in the collection, analysis and interpretation of the data, in the writing of the article and in the decision to submit it for publication.

Availability of data and materials

The data that support the findings of this study are available, but restrictions apply to the availability of these data, which were used under license for the current study, and so are not publicly available. Data are however available upon reasonable request and with permission.

Ethics approval and consent to participate

All procedures performed in studies involving human participants were in accordance with the ethical standards of the institutional and/or national research committee (Ethics Committee of Epidemiology and Public of the Hospital District of Helsinki and Uusimaa and Ethics Committee of the Northern Ostrobothnia Hospital District) and with the 1964 Helsinki declaration and its later amendments or comparable ethical standards. In HBCS1934–1944, written informed consent was obtained from each participant before the study. In NFBC1966 written informed consent was obtained from all individual participants included in the study. In NFBC1986 all participants and their parents/guardians signed an informed consent to use their data.

Consent for publication

Not applicable.

Competing interests

The authors declare that they have no competing interests.

Author details

¹Center for Life Course Health Research, University of Oulu, P.O.Box 5000, Fin-90014, Oulu, Finland. ²Biocenter Oulu, University of Oulu, P.O.Box 8000, Fin-90014, Oulu, Finland. ³School of Natural and Built Environment, Queen's University Belfast, Elmwood Avenue Belfast, Belfast BT7 1NN, UK. ⁴Unit of Primary Health Care, Oulu University Hospital, P.O.Box 10, 90029 OYS Oulu, Finland. ⁵Folkhälsan Research Center, Haartmanninkatu 8, 00290 Helsinki, Finland. ⁶Department of General Practice and Primary Health Care, University of Helsinki, P.O. Box 20, 00014, Helsinki, Finland. ⁷Department of Epidemiology and Biostatistics, Imperial College, London SW7 2AZ, UK. ⁸Department of Psychology and Logopedics, University of Helsinki, P.O.Box 63, 00014, Helsinki, Finland. ⁹Turku Institute for Advanced Studies, University of Turku, FI-20014 Turku, Finland. ¹⁰Department of Hygiene and Epidemiology, University of Ioannina Medical School, 45110 Ioannina, Greece. ¹¹Department of Biostatistics and Epidemiology, MRC-PHE Centre for Environment and Health, School of Public Health, Imperial College London, London W2 1PG, UK. ¹²Medical Research Center Oulu, Oulu University Hospital and University of Oulu, P.O. Box 8000, FI-90014 Oulu, Finland. ¹³Department of Obstetrics and Gynecology, National University of Singapore, Yong Loo Lin School of Medicine, Singapore, SG, Singapore. ¹⁴Singapore Institute for Clinical Sciences, Agency for Science, Technology, and Research, Singapore, Singapore. ¹⁵Department of Genomics, Imperial College London, London SW7 2AZ, UK.

Received: 29 November 2019 Accepted: 22 April 2020

Published online: 18 May 2020

References

- Bentham J, Di Cesare M, Bilano V, et al. Worldwide trends in body-mass index, underweight, overweight, and obesity from 1975 to 2016: a pooled analysis of 2416 population-based measurement studies in 128.9 million children, adolescents, and adults. *Lancet*. 2017;390:2627–42.
- Swinburn B, Kraak V, Allender S, et al. The global syndemic of obesity, undernutrition, and climate change: *The Lancet* commission report. *Lancet*. 2019;393:791–846.
- World Health Organization. Obesity and overweight. 2019. <http://www.who.int/mediacentre/factsheets/fs311/en/>. Accessed 14 Apr 2019.
- Cappuccio FP, Taggart FM, Kandala N-B, et al. Meta-analysis of short sleep duration and obesity in children and adults. *Sleep*. 2008;31:619–26.
- Brandkvist M, Björngaard JH, Ødegard RA, et al. Quantifying the impact of genes on body mass index during the obesity epidemic: longitudinal findings from the HUNT study. *BMJ*. 2019;366:14067. <https://doi.org/10.1136/bmj.14067>.
- Heianza Y, Qi L. Impact of genes and environment on obesity and cardiovascular disease. *Endocrinology*. 2018;160:81–100.
- Parsons TJ, Power C, Logan S, et al. Childhood predictors of adult obesity: A systematic Review. *Int J Obes*. 1999;23:1–107.
- Senese LC, Almeida ND, Fath AK, et al. Associations between childhood socioeconomic position and adulthood obesity. *Epidemiol Rev*. 2009;31:21–51.
- Power C, Manor O, Matthews S. Child to adult socioeconomic conditions and obesity in a national cohort. *Int J Obes*. 2003;27:1081–6.
- Power C, Parsons T. Nutritional and other influences in childhood as predictors of adult obesity. *Proc Nutr Soc*. 2000;59:267–72.
- Laitinen J, Power J, Järvelin M-J. Family social class, maternal body mass index, childhood body mass index, and age at menarche as predictors of adult obesity. *Am J Clin Nutr*. 2001;74:287–94.
- Coleman J, Krapohl E, Eley T et al. Individual and shared effects of social environment and polygenic risk scores on adolescent body mass index. *Sci Rep*. 2018;6:344. <https://doi.org/10.1038/s41598-018-24774-5>.
- Heraclides A, Brunner E. Social mobility and social accumulation across the life course in relation to adult overweight and obesity: the Whitehall II study. *J Epidemiol Community Health*. 2010;64:714–9.
- Karnehed NEK, Rasmussen F, Hemmingsson T, et al. Obesity in young adulthood is related to social mobility among Swedish men. *Obesity*. 2008; 16:654–8.
- National Institute for Health and Welfare. Helsinki Birth Cohort Study (HBCS) Idefix. 2019. <https://thl.fi/en/web/thlfi-en/research-and-expertwork/projects-and-programmes/helsinki-birth-cohort-study-hbcs-idefix>. Accessed 14 Mar 2019.
- University of Oulu Northern Finland Birth Cohorts. <http://www.oulu.fi/nfbc/>. Accessed 15 Sept 2018.

17. Eriksson JG, Forsén T, Tuomilehto J, et al. Early growth and coronary heart disease in later life: longitudinal study. *Br Med J*. 2001;322:949–53.
18. Rantakallio P. Groups at risk in low birth weight infants and perinatal mortality. *Acta Paediatr Scand Suppl*. 1969;193:1–17.
19. Lowry E, Rautio N, Karhunen V, et al. Understanding the complexity of glycaemic health: systematic bio-psychosocial modelling of fasting glucose in middle-age adults; a DynaHEALTH study. *Int J Obes*. 2019;43:1181–92.
20. Loh P-R, Kichaev G, Gazal S, et al. Mixed-model association for biobank-scale datasets. *Nat Genet*. 2018;50:906–8.
21. Bycroft C, Freeman C, Petkova D, et al. Genome-wide genetic data on ~500,000 UK biobank participants. *BioRxiv*. 2017. <https://doi.org/10.1101/166298>.
22. Sudlow C, Gallacher J, Allen N, et al. UK biobank: an open access resource for identifying the causes of a WideRange of complex diseases of middle and old age. *PLoS Med*. 2015;12:e1001779.
23. Euesden J, Lewis CM, O'Reilly PF. PRSice: polygenic risk score software. *Bioinformatics*. 2015;31:1466–8.
24. Chang CC, Chow CC, Tellier LC, et al. Second-generation PLINK: rising to the challenge of larger and richer datasets. *Gigascience*. 2015;4:7.
25. Muthén L, Muthén B. *Mplus user's guide*. 4th. Los Angeles: Authors; 1998–2007.
26. Kenward M, Molenberghs G. Likelihood based frequentist inference when data are missing at random. *Stat Sci*. 1998;13:236–47.
27. Lehne B, Lewis CM, Schlitt T. From SNPs to genes: disease association at the gene level. *PLoS One*. 2011;6:e20133.
28. Statistics Finland. Finns consume eleven times more now than 100 years ago. 2007; http://www.stat.fi/tup/suomi90/heinakuu_en.html. Accessed 14 May 2019.
29. Power C, Graham H, Due P, et al. The contribution of childhood and adult socioeconomic position to adult obesity and smoking behaviour: an international comparison. *Int J Epidemiol*. 2005;34:335–44.
30. El-Sayed A, Scarborough P, Galea S. Unevenly distributed: a systematic review of the health literature about socioeconomic inequalities in adult obesity in the United Kingdom. *BMC Public Health*. 2012;12:18.
31. Blane D, Smith GD, Bartley M. Social selection: what does it contribute to social class differences in health? *Sociol Health Illn*. 1993;15:1–15.
32. Schoen R, Cheng Y-A. Partner choice and the differential retreat from marriage. *J Marriage Fam*. 2006;68:1–10.
33. Carreras-Torres R, Johansson M, Haycock PC, Relton CL, Davey Smith G, Brennan P, Martin RM. Role of obesity in smoking behavior: Mendelian randomisation study in UK biobank. *BMJ*. 2018;361:k1767.
34. Malhotra R, Malhotra C, Chan A, et al. Life-course socioeconomic status and obesity among older Singaporean Chinese men and women. *J Gerontol Ser B Psychol Sci Soc Sci*. 2013;68:117–27.
35. Aitsi-Selmi A, Batty GD, Barbieri MA, et al. Childhood socioeconomic position, adult socioeconomic position and social mobility in relation to markers of adiposity in early adulthood: evidence of differential effects by gender in the 1978/79 Ribeirão Preto cohort study. *Int J Obes*. 2013;37:439–47.
36. Causa O, Dantan S, Johansson Å. Intergenerational social mobility in European OECD countries. Economics Department working papers no 707. <https://www.oecdilibrary.org/docserver/223043801483.pdf?expires=1559032385&id=id&accname=ocid961&checksum=E049853352955408EF310C47AE2B2FE6>. Accessed 14 May 2019.
37. Bradley RH, Corwyn RF. Socioeconomic status and child development. *Annu Rev Psychol*. 2002;53:371–99.
38. Non AL, Román JC, Gross CL, et al. Early childhood social disadvantage is associated with poor health behaviours in adulthood. *Ann Hum Biol*. 2016; 43:144–53.
39. Thompson AL. Intergenerational impact of maternal obesity and postnatal feeding practices on pediatric obesity. *Nutr Rev*. 2013;71:555–61.
40. Naess M, Holmen TL, Langaas M, et al. Intergenerational transmission of overweight and obesity from parents to their adolescent offspring -the HUNT study. *PLoS One*. 2016;11:e–166585. <https://doi.org/10.1371/journal.pone.0166585>.
41. Nuttall FQ. Body mass index: obesity, BMI, and health: a critical review. *Nutr Today*. 2015;50:117–28.
42. Haidich AB. Meta-analysis in medical research. *Hippokratia*. 2010;14:29–37.
43. Khara AV, Chaffin M, Wade KH, et al. Polygenic Prediction of Weight and Obesity Trajectories from Birth to Adulthood. *Cell*. 2019;177:587–596.e9.

Publisher's Note

Springer Nature remains neutral with regard to jurisdictional claims in published maps and institutional affiliations.

Ready to submit your research? Choose BMC and benefit from:

- fast, convenient online submission
- thorough peer review by experienced researchers in your field
- rapid publication on acceptance
- support for research data, including large and complex data types
- gold Open Access which fosters wider collaboration and increased citations
- maximum visibility for your research: over 100M website views per year

At BMC, research is always in progress.

Learn more biomedcentral.com/submissions

