




# 41BB-based and CD28-based CD123-redirectioned T-cells ablate human normal hematopoiesis in vivo

Matteo Libero Baroni,<sup>1</sup> Diego Sanchez Martinez,<sup>1</sup> Francisco Gutierrez Aguera,<sup>1</sup> Heleia Roca Ho,<sup>1</sup> Maria Castella,<sup>1</sup> Samanta Romina Zanetti <sup>1</sup>, Talia Velasco Hernandez <sup>1</sup>, Rafael Diaz de la Guardia,<sup>1</sup> Julio Castaño,<sup>1</sup> Eduardo Anguita,<sup>2</sup> Susana Vives,<sup>3</sup> Josep Nomdedeu,<sup>4</sup> Helene Lapillone,<sup>5</sup> Anne E Bras,<sup>6</sup> Vincent H J van der Velden,<sup>6</sup> Jordi Junca,<sup>1,3</sup> Pedro Marin,<sup>7</sup> Alex Bataller <sup>7</sup>, Jordi Esteve,<sup>7</sup> Binje Vick,<sup>8</sup> Irmela Jeremias,<sup>8,9</sup> Angel Lopez,<sup>10</sup> Marc Sorigue,<sup>1,3</sup> Clara Bueno,<sup>1,11</sup> Pablo Menendez<sup>1,11,12</sup>

**To cite:** Baroni ML, Sanchez Martinez D, Gutierrez Aguera F, *et al.* 41BB-based and CD28-based CD123-redirectioned T-cells ablate human normal hematopoiesis in vivo. *Journal for ImmunoTherapy of Cancer* 2020;**8**:e000845. doi:10.1136/jitc-2020-000845

► Additional material is published online only. To view, please visit the journal online (<http://dx.doi.org/10.1136/jitc-2020-000845>).

Accepted 07 May 2020



© Author(s) (or their employer(s)) 2020. Re-use permitted under CC BY-NC. No commercial re-use. See rights and permissions. Published by BMJ.

For numbered affiliations see end of article.

## Correspondence to

Dr Pablo Menendez;  
pmenendez@carrerasresearch.org

## ABSTRACT

**Background** Acute myeloid leukemia (AML) is a hematopoietic malignancy which is biologically, phenotypically and genetically very heterogeneous. Outcome of patients with AML remains dismal, highlighting the need for improved, less toxic therapies. Chimeric antigen receptor T-cell (CART) immunotherapies for patients with refractory or relapse (R/R) AML are challenging because of the absence of a universal pan-AML target antigen and the shared expression of target antigens with normal hematopoietic stem/progenitor cells (HSPCs), which may lead to life-threatening on-target/off-tumor cytotoxicity. CD33-redirectioned and CD123-redirectioned CARTs for AML are in advanced preclinical and clinical development, and they exhibit robust antileukemic activity. However, preclinical and clinical controversy exists on whether such CARTs are myeloablative.

**Methods** We set out to comparatively characterize in vitro and in vivo the efficacy and safety of 41BB-based and CD28-based CARCD123. We analyzed 97 diagnostic and relapse AML primary samples to investigate whether CD123 is a suitable immunotherapeutic target, and we used several xenograft models and in vitro assays to assess the myeloablative potential of our second-generation CD123 CARTs.

**Results** Here, we show that CD123 represents a bona fide target for AML and show that both 41BB-based and CD28-based CD123 CARTs are very efficient in eliminating both AML cell lines and primary cells in vitro and in vivo. However, both 41BB-based and CD28-based CD123 CARTs ablate normal human hematopoiesis and prevent the establishment of de novo hematopoietic reconstitution by targeting both immature and myeloid HSPCs.

**Conclusions** This study calls for caution when clinically implementing CD123 CARTs, encouraging its preferential use as a bridge to allo-HSCT in patients with R/R AML.

## BACKGROUND

Acute myeloid leukemia (AML) is a biologically, phenotypically and genetically very heterogeneous malignant disease which

results from the uncontrolled accumulation of differentiation-defective hematopoietic stem/progenitor cells (HSPCs) or immature myeloid cells.<sup>1,2</sup> AML is one of the most common hematopoietic malignancies, and its incidence increases with age.<sup>3,4</sup> Intensive chemotherapy combos based on nucleoside analogs plus anthracyclines remain the standard front-line treatment of AML,<sup>5</sup> followed by allogeneic HSPC transplant (allo-HSCT), based on patients' eligibility, to consolidate complete remission (CR) and to prevent relapse.<sup>6</sup> However, with the exception of a few molecular subgroups (the 'so-called' low-risk AMLs), relapses are common after consolidation therapy and/or allo-HSCT. Chemotherapy-related toxicity, refractoriness, and failure to eradicate leukemia-initiating cells are the major mechanisms underlying AML progression and relapse.<sup>7-10</sup> Unfortunately, improved AML treatments have only experienced minor developments over the last four decades, and current 5-year event-free survival (EFS) remains ~20% in adults and <70% in children,<sup>11,12</sup> highlighting the desperate need for safer and more efficient therapeutics.

Immunotherapy has generated unprecedented expectations in cancer treatment. In AML, both CD33- and CD123-specific antibody-drug conjugates have been used for combination therapy with standard chemotherapy with improved EFS,<sup>13,14</sup> and Bispecific T-cell Engagers (BiTEs) for CD33 and Dual-Affinity Retargeting (DART) antibodies for CD123 are being clinically assayed.<sup>15,16</sup> Adoptive cellular immunotherapy based on the engineering of human chimeric antigen receptor T-cells (CARTs) redirectioned against

cell surface tumor antigens has shown robust clinical responses in patients with B-cell malignancies, thanks to the high efficacy, specificity and persistence of CARTs.<sup>17–19</sup> However, the clinical implementation of AML-specific and safe CARTs for patients with refractory or relapse (R/R) AML is still awaiting. Strategies targeting AML using CARTs have proven more challenging than in B-lineage malignancies because of two reasons: (1) the lack of a universal pan-AML target antigen due to the large disease heterogeneity, which hampers clinical implementation, since a wide range of CARs would be needed to cover the different leukemic phenotypes; and (2) the shared expression of immature target antigens between normal HSPCs and myeloid blasts, which compromises safety due to potential on-target/off-tumor cytotoxicity against HSPCs, leading to fatal aplasia.<sup>20 21</sup>

Adoptive immunotherapy for AML is in advanced preclinical and clinical development using CD33-redirection and CD123-redirection CARs (CD123 CARTs), and they exhibit robust antileukemic activity in vitro and in vivo.<sup>22–25</sup> However, controversy exists on whether CD123-directed and CD33-directed CARTs are myeloablative. Some groups raised safety concerns leading to the development of complex target antigen knockout in HSPC or T-cell suicide strategies to circumvent such a toxicity.<sup>23 26</sup> In contrast, other groups showed a safety profile with limited on-target/off-tumor toxicity of such CARs.<sup>22 27–31</sup> Here, we set out to characterize in vitro and in vivo the efficacy and the safety of 41BB-costimulated and CD28-costimulated CD123CARs, based on a clinically relevant single chain variable fragment (scFv) from the CSL362 monoclonal antibody (MoAb). Analysis of a large cohort of diagnostic and relapse AML primary samples revealed that CD123 is a suitable target for AML, and CD123 CARTs were very efficient in vitro and in vivo in eliminating both AML cell lines and primary cells, regardless of the costimulation motif. However, clonogenic assays and several xenograft models revealed that both 41BB-costimulated and CD28-costimulated CD123 CARTs strongly ablate normal human hematopoiesis by targeting both HSCs and myeloid progenitors. This study calls for caution when clinically implementing CD123 CARTs and highlights its preferential use as a bridge to allo-HSCT in patients with R/R AML.

## MATERIALS AND METHODS

### Car design and vectors, lentiviral production and T-cell transduction

The anti-CD123 scFV derived from the clinically tested CSL362 MoAb was generated and cloned into the pCCL lentiviral-based second-generation CAR backbone containing a human CD8 transmembrane domain, a human costimulatory domain (either 41BB or CD28), CD3z endodomain, and a T2A–green fluorescence protein (GFP) cassette. The pCCL vector expressing GFP alone (MOCK vector) was used as a control. Chimeric antigen receptor (CAR)-expressing viral particles pseudotyped

with vesicular stomatitis virus-G (VSV-G) were generated using HEK 293T cells with a standard polyethylenimine (PEI) transfection protocol. For each production, plasmid transfection was carried out using a 3:1 PEI:DNA ratio using 16 µg transfer vector, 16 µg of pSPAX2, and 8 µg VSV-G per plate, and viral particles were concentrated by ultracentrifugation as previously described.<sup>32</sup> Peripheral blood mononuclear cells (PBMCs) were isolated from buffy coats from healthy volunteers by Ficoll-Hypaque gradient centrifugation. Buffy coats were obtained from the Barcelona Blood and Tissue Bank (BST) on institutional review board (IRB) approval (HCB/2018/0030). T-cells were activated by plate-bound OKT3 and anti-CD28 antibodies (BD Biosciences) for 2 days in the presence of interleukin (IL)-7 and IL-15 (10 ng/mL, Mitenyi Biotech).<sup>33 34</sup> Surface expression of CAR123 was traced by fluorescence-activated cell sorting (FACS). CAR detection was confirmed by GFP expression and by using an AffiniPure F(ab')<sub>2</sub> Fragment Goat Anti-Human IgG (H+L) (Jackson ImmunoResearch). Activation and subsetting of lentivirally transduced T-cells were confirmed by surface staining with CD25/CD69 (data not shown) and CD3/CD4/CD8, respectively.

### Immunophenotyping of healthy HSPCs, primary AML samples and cell lines

Diagnostic immunophenotyping data for the most commonly expressed antigens in AML (CD123, CD33, CD13, CD34, CD15, c-kit, and CD66) were obtained for 97 patients diagnosed at local hospitals: Germans Trias i Pujol (Barcelona, Spain), Hospital Clínico (Madrid, Spain), Hôpital Armand Trousseau (Paris, France) and Santa Creu i San Pau (Barcelona, Spain). CD123 expression was also compared in diagnostic-relapsed paired samples (n=68 patients) and in paired bulk leukemia-leukemia stem cells (LSCs) (n=37 patients).<sup>35</sup> Cell lines were stained with CD123-APC, CD33-BV421, CD14-PerCP-Cy5.5 and CD19-APC. The expression of CD123 and CD33 antigens was prospectively compared in CD34+ HSPCs derived from healthy cord blood (CB, n=22), mobilized peripheral blood (PB, n=10) and diagnostic primary AML samples (n=24). For HSPC subsetting, CD34+ cells were stained with CD34-PE or CD34-PE-Cy7, CD133-PE, CD19-FITC, CD90-APC, CD13-PE-Cy7 and CD71-APC-Cy7, which allow for the identification and quantification of immature HSCs (CD34++CD133+CD90+), myeloid progenitors (CD34+CD13++CD71–/low), erythroid progenitors (CD34+CD71++CD13low), and B-cell progenitors (CD34+CD19+CD71–CD13–). Isotype-matched, non-reactive fluorochrome-conjugated MoAbs were always used as a fluorescence reference. All antibodies were purchased from Beckton Dickinson. Cells were incubated with MoAbs (30 min at 4°C in the darkness), then washed in phosphate-buffered saline (PBS) and analyzed in a FACSCanto-II flow cytometer equipped with FACSDiva software (Becton Dickinson).<sup>36–38</sup> Determination of antigen density for CD33 and CD123 was

performed using BDQuantibrite-PE (Becton Dickinson) according to the manufacturer's instructions.

### In vitro cytotoxicity assays and cytokine release determination

The cell lines THP-1, MOLM-13 and 697 were purchased from DSMZ (Germany) and expanded according to DSMZ recommendations. Primary AMLs and healthy CD34+ cells were obtained from the aforementioned hospitals and the BST, respectively (IRB approval: HCB/2018/0030). Target cells were incubated with CAR123 or MOCK T-cells at different effector:target (E:T) ratios for the indicated time periods. CART-mediated cytotoxicity was determined by analyzing the residual alive (7-AAD-) target cells at each time point and E:T ratio. For absolute cell counting, Trucount absolute count beads (Becton Dickinson) were used. Furthermore, FACS-sorted CD3+ mature T-cells from the bone marrow (BM) of CD123+ patients with AML were activated, transduced with CD123 CAR and tested against their autologous-matched CD123+ AML blasts. Target cells ( $1 \times 10^5$ ) were used for all cytotoxicity assays unless stated otherwise. Table 1 shows the clinical–biological features of the CD123+ AML samples used for in vitro experiments. The production of the proinflammatory cytokines IL-2, tumor necrosis factor alpha (TNF- $\alpha$ ) and interferon gamma (IFN- $\gamma$ ) was assessed by ELISA (Human ELISA SET, BD Biosciences) using in vitro supernatants harvested at 16 hours post-T-cell exposure, and sera were collected from mice 10 days after CART infusion.

### Colony-forming unit (CFU) assays

CB-derived CD34+ cells were exposed for 24 hours to either CD123 CARTs or MOCK T-cells (E:T 1:1) and then plated ( $2 \times 10^3$ ) onto serum-free methylcellulose H4435 (Stem Cell Technologies). CFUs were then counted and scored after 12–14 days following standard procedures.

### In vivo xenograft models for AML, HSPCs and CARTs

Non-obese diabetic-Cg-Prkdcscid Il2rgtm1Wjl/SzJ (NSG) mice (8–12 weeks old, Jackson Laboratory) were bred and housed under pathogen-free conditions in the animal facility of the Barcelona Biomedical Research Park. In experiments addressing CAR123 efficacy, mice were intravenously transplanted with  $0.25 \times 10^6$  Luc-mCherry-expressing patient-derived xenograft AML cells (PDX-579)<sup>39</sup> 5 days before intravenous infusion of  $3 \times 10^6$  of either 41BB-CD123 or CD28-CD123 CARTs derived from healthy PBMCs. Tumor burden was monitored at the indicated time points by bioluminescence (BLI) using the Xenogen in vivo imaging system (IVIS) 50 Imaging System (Perkin Elmer).<sup>32</sup> In experiments addressing the myeloablative effect of CAR123, CD34+ HSPCs ( $0.1 \times 10^6$ ) were intra-BM transplanted in sublethally irradiated (2 Gy) NSG mice, followed by intravenous infusion of  $3 \times 10^6$  of 41BB-CD123, CD28-CD123 CARTs or MOCK T-cells either 1 day or 6 weeks after CD34+ transplantation. BM and PB were FACS-analyzed for human

chimerism at sacrifice. Cells were stained with anti-HLA-ABC-PE and CD45-BV450. Engrafted mice were assessed for multilineage engraftment using anti-CD123-APC for myeloid cells, anti-CD19-BV421 for lymphoid cells, and anti-CD34-PE.Cy7 for immature cells. Human absolute engraftment in PB and BM was quantified using BD Trucount tubes according to manufacturer's instructions.

### Statistical analysis

For comparison of CD123 expression between paired 'diagnostic-relapse' and 'bulk leukemic cells-LSC', the Mann-Whitney U test was used. For differences in antigen density and engraftment among groups, a one-way analysis of variance test was used. For the remaining comparisons, Student's t-test was used. All p values were considered statistically significant at  $<0.05$  (\*).

## RESULTS

### CD123 represents a bona fide immunotarget for AML

We first analyzed by FACS the expression levels of the most common diagnostic myeloid markers in a cohort of 97 patients with AML at presentation. We found that CD123 was the most common and homogeneously expressed antigen ( $86.4\% \pm 26.8$  of AML blasts) followed by CD33 ( $77.4\% \pm 32.1$ ) (figure 1A). Important, in 82% of the patients with AML analyzed,  $>80\%$  of the blasts were CD123+, while only 66% of the patients showed positivity for CD33 in  $>80\%$  of the blasts (figure 1A). A target antigen for immunotherapy in AML should ideally be absent in HSPCs. CD123 and CD33 are both partially expressed in healthy CD34+ HSPCs,<sup>22,23</sup> so we next quantified the density (molecules/cell) of both antigens in fresh primary AML blasts (n=24), healthy CB-derived (n=22) and healthy mobilized PB-derived CD34+ HSPCs (n=10). Of note, 67% (16/24) of patients with AML displayed levels of CD123 significantly higher than those found in both CB-derived and PB-derived CD34+ HSPCs, while only 41% (10/24) of patients with AML displayed levels of CD33 that segregate them from CB-derived and PB-derived CD34+ HSPCs (figure 1B). This suggests that CD123 represents, a priori, a less myeloablative target than CD33. Of note, analysis of paired diagnostic (DX)-relapse (RX) AML samples revealed that CD123 expression is maintained at relapse, and in AML-LSC (identified as CD34+CD38-)<sup>35</sup> (figure 1C), reinforcing CD123 as a bona fide immunotarget for R/R AML.

### 41BB-based and CD28-based CD123 CARTs efficiently eliminate AML primary cells in vitro and in vivo

We next designed second-generation 41BB-based and CD28-based CD123CARTs coupled in-frame with GFP through a T2A sequence (figure 1D and online supplementary figure S1A). The expression of both 41BB-CD123 and CD28-CD123 CAR in T-cells was confirmed through codetection of scFv and GFP (figure 1E and online supplementary figure S1B) and did not affect the CD4:CD8 ratio (figure 1F). Importantly, activated (CD69+CD25+) T-cells

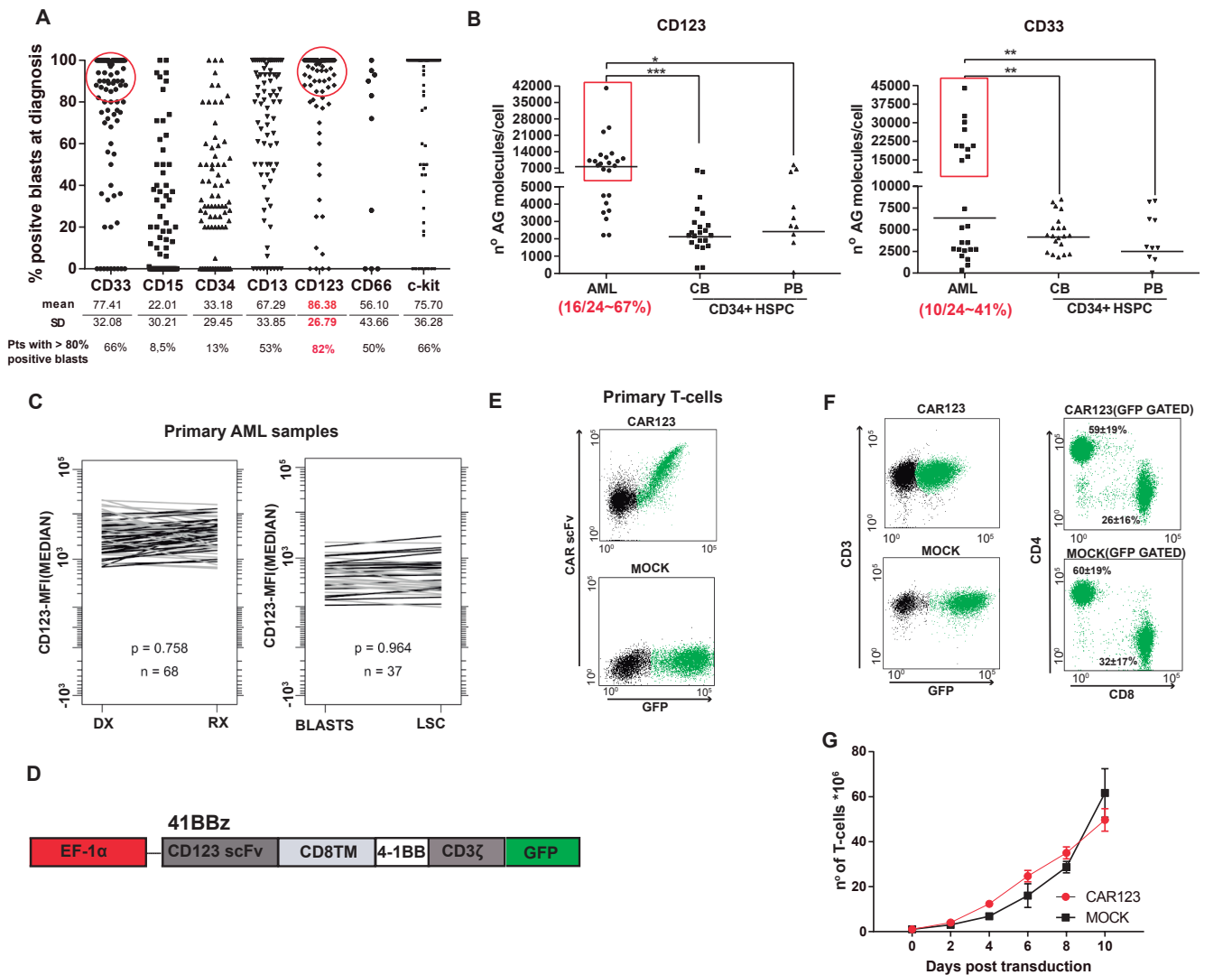
**Table 1** Biological and cytogenetic-molecular characteristics of blasts from diagnostic patients with AML

Patient ID	Diagnostic	Cytogenetics	Molecular	Age (years)	Gender	Blasts (%)	Cd123 (%)	Use
14085	AML	46,XY	NPM1+, FLT3-ITD	42	M	87	80	AG density
14176	AML-M1	46,XX	Normal	44	F	83	75	AG density ELISA
14093	AML-M4	46,XX	NPM1 <sup>MUT</sup> , FLT3-ITD	52	F	81	86	AG density
14184	AML-M1	46,XX, t(8;21)	AML1-ETO	14	F	90	84	AG density
14268	AML	46,XY, inv(16)	NPM1 <sup>MUT</sup> , FLT3-ITD	69	M	95	92	AG density Autologous
14269	AML-M5	47,XX,+8	Normal	64	F	92	90	AG density ELISA
14266	AML	46,XX,t(8;21)	AML1-ETO, FLT3-ITD+	48	F	90	92	AG density ELISA
14123	AML	46,XY,t(3;3)	Normal	28	M	42	77	AG density
14185	AML	46,XY,inv(16)	Normal	8	M	77	72	AG density
14143	AML-M1	46,XY	Normal	43	M	90	90	AG density
14156	AML	46,XY,11q23	MLL-AF6	1	M	88	100	AG density
14144	AML	46,XY,del(7)(q22)	Normal	61	M	88	98	AG density
14141	AML-M5	46,XX, t(8;21)	AML1-ETO	39	F	83	82	AG density
14091	AML-M4	47,XX,+8	Normal	61	F	95	80	AG density
14272	AML	46,XX	NPM1 <sup>MUT</sup> , FLT3-ITD	44	F	73	88	Autologous
14274	AML	46,XX, t(8;21)	AML1-ETO	13	F	85	75	Autologous
ABT3974	AML	46,XY,+9, inv(16) (p13;q22), der(17)t(11;17) (q13;q25)	CEBPA, FLT3-TKD, WT1	37	M	91	87	AG density
ABT5270	AML	46,XY	NPM1, DNMT3A, IDH1	55	M	74	77	AG density
ABT4435	AML	46,XX	IDH2, DNMT3A	70	F	24	96	AG density
ABT8326	sAML	44–45X-,Y, der(3),del(7)(q22),der(8),add(12)(p13),-18,add(21)(q28)	TET2, CALR	61	M	6	56	AG density
ABT7693	AML	46,XY	NPM1, IDH1, PTPN11	45	M	80	99	AG density
ABT4470	AML	47,XX	NPM1, IDH1, BCOR	72	F	71	76	AG density
ABT5718	AML	46,XX	CEBPA <sup>bi</sup> , DNMT3A, TET2	52	F	34	65	AG density
ABT8597	AML	NA	NPM1, IDH1, NRAS	69	F	71	100	AG density
ABT3906	AML	NA	NPM1, FLT3-ITD <sup>HIGH</sup> , IDH1	40	M	93	77	AG density
ABT4685	tAML	46,XX	CEBPA <sup>bi</sup> , TET2, WT1	67	F	49	93	AG density

AG, antigen; AML, acute myeloid leukemia; F, female; M, male; sAML, secondary acute myeloid leukemia; tAML, therapy-related acute myeloid leukemia.

continuously expanded ~50-fold over a 10-day period, similar to MOCK T-cells (figure 1G), demonstrating that redirecting T-cells against CD123 does not hamper T-cell expansion.

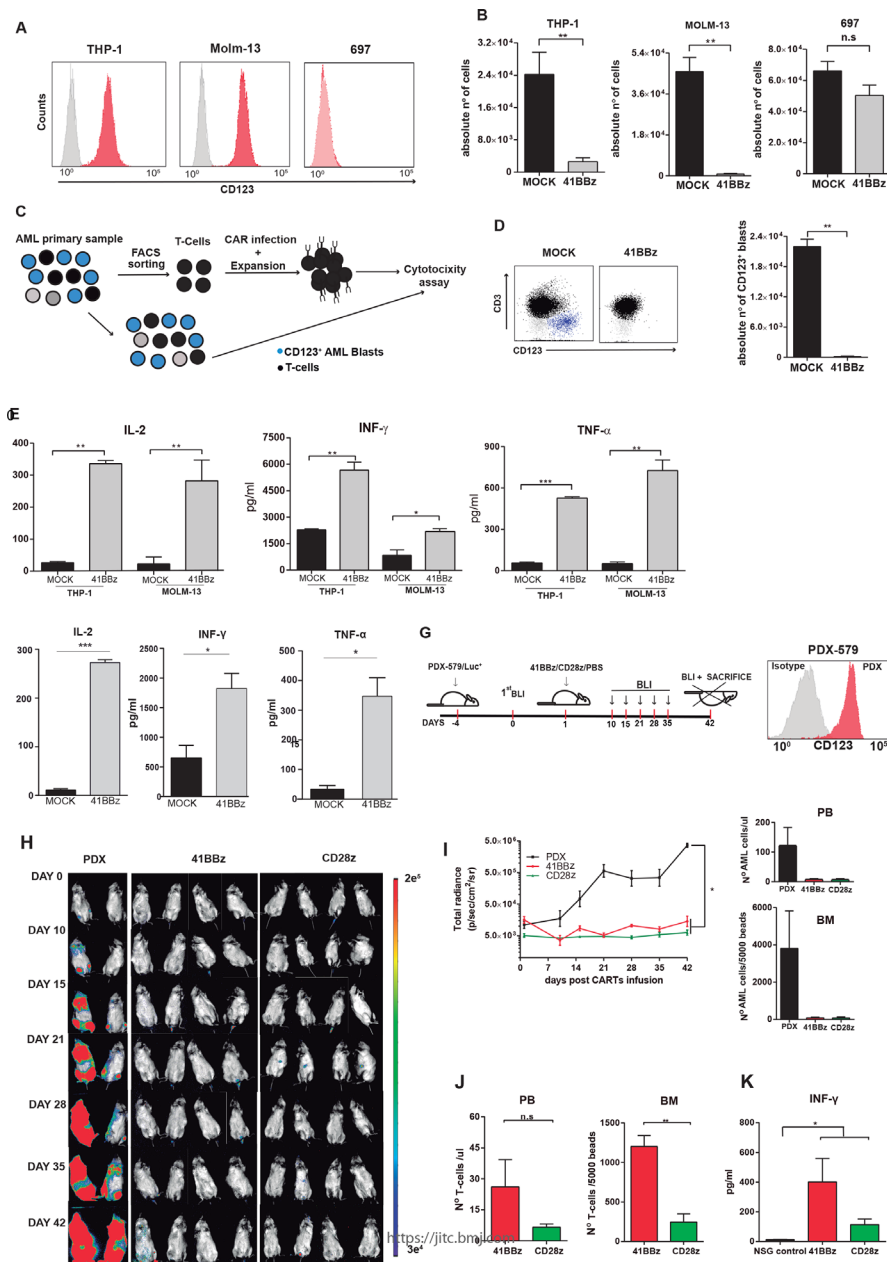
We then tested the functionality of our 41BB-CD123 and CD28-CD123 CARs in vitro and in vivo (figure 2 and online supplementary figure S1, S2). In vitro, both 41BB-CD123 (figure 2A) and CD28-CD123 (online



**Figure 1** Expression of CD123 in AML and design, detection and expansion CD123 CARTs. (A) Immunophenotyping of the indicated diagnostic myeloid markers in a cohort of 97 patients with AML at presentation. Each dot denotes an individual patient. Red circles identify patients with >80% of blasts positive for the indicated marker. (B) Comparative antigen density (measured as antigen molecules/cell) for CD123 and CD33 in primary AML samples (n=24), CB-derived (n=22) and PB-derived (n=10) CD34+ cells from healthy donors. AML blasts were identified as 7AAD<sup>-</sup>CD3<sup>-</sup>CD45<sup>+/low</sup>CD123<sup>+</sup>CD33<sup>+</sup>. One-way analysis of variance; \*p<0.05, \*\*p<0.01, \*\*\*p<0.001. (C) Comparison of CD123 expression in 68 paired diagnostic-relapse AML samples (left panel) and in bulk tumor versus AML-LSC (n=37, right panel).<sup>33</sup> (D) Scheme of the CD123 CAR structure. (E) CAR detection in primary T-cells using an antihuman IgG F(ab')<sub>2</sub> antibody and GFP. (F) Successful CAR123 transduction and detection in CD4+ and CD8+ T-cells (n=3). (G) Robust expansion of activated T-cells transduced with either MOCK (black line) or CAR123 (red line) (n=3). AML, acute myeloid leukemia; CAR, chimeric antigen receptor; CART, chimeric antigen receptor T-cell; CB, cord blood; DX, diagnostic; GFP, green fluorescence protein; LSC, leukemia stem cell; PB, peripheral blood; RX,relapse.

supplementary figure S1C) CARTs, but not MOCK T-cells, specifically eliminated the CD123+ AML cell lines THP1 and MOLM13 in an E:T ratio-dependent manner (online supplementary figure S2) while sparing the CD123- B-ALL cell line 697. In fact, CD123+ AML cells barely survived exposure to CD123 CARTs in a 48-hour absolute number assay at a 1:1 E:T ratio (figure 2B and online supplementary figure S1C). We then examined in an autologous setting whether CD3+ T-cells deriving from patients with AML can be isolated, modified to express CD123 CAR, expanded and used as cytotoxic effector cells

(figure 2C). Patient-derived CD123 CARTs were successfully generated from magnetic-activated cell sorting (MACS)-sorted CD3+ T-cells (>95% purity) and specifically eliminated autologous patient-matched CD123+ AML blasts (figure 2D). Important, both CD123 CARTs produced high levels of the proinflammatory cytokines IL-2, TNF- $\alpha$ , and IFN- $\gamma$  on coculture with both AML cell lines (figure 2E and online supplementary figure S1D) and primary blasts (figure 2F), confirming their robust cytotoxicity.



**Figure 2** 41BB-CD123 CARTs specifically target and eliminate CD123+ AML cells in vitro and in vivo. (A) Surface expression of CD123 (red) in THP-1, MOLM-13 and 697 cell lines. (B) Absolute counts of alive residual target cells measured by FACS in 48-hour cytotoxicity assays at 1:1 E:T ratio (n=3). Data are presented as mean±SEM; \*p<0.05, \*\*p<0.01, \*\*\*p<0.001. (C) Graphical cartoon of the experimental design for autologous cytotoxic assays. Normal CD3+ T-cells were FACS-purified from the BM of patients with AML (n=3), infected with CD123 CAR, expanded, and exposed to autologous total PBMCs (1:1 E:T). Residual CD123+ blasts were quantified 48 hours post-41BB-CD123 CART exposure. (D) Left: representative FACS analysis of the cytotoxicity assay. T-cells are shown in black and CD123+ blasts in blue. Right: absolute counts of alive AML blasts in 48-hour cytotoxicity assays at 1:1 E:T ratio (n=3). (E,F) ELISA showing robust secretion of proinflammatory cytokines by 41BB-CD123 CARTs after exposure to CD123+ cell lines (E) and AML primary blasts (F) for 16 hours at 1:2 E:T ratio (n=3). (G) Experimental design to assess in vivo the efficacy of both 41BB-based and CD28-based CD123 CAR. NSG mice were intravenously injected with  $2.5 \times 10^5$  Luc-expressing xenograft AML cells (PDX-579) followed 5 days after by a single intravenous injection of  $3 \times 10^6$  CD123 CARTs (either 41BB or CD28) generated from healthy PBMCs. Tumor burden was monitored every 7–10 days by BLI using IVIS imaging. (H) IVIS imaging of tumor burden monitored by BLI at the indicated time points. (I) Left: total radiance quantification (p/s/cm<sup>2</sup>/sr) at the indicated time points for 41BB-CD123 CARTs, CD28-CD123 CARTs and untreated mice. \*P<0.05. Right: absolute counts of residual AML cells in PB and BM at endpoint. (J) T-cell persistence in PB and BM at endpoint. (K) In vivo quantification by ELISA of IFN- $\gamma$  in PB sera collected in the acute phase (10 days post-CART infusion). \*p<0.05. AML, acute myeloid leukemia; BLI, bioluminescence; BM, bone marrow; CART, chimeric antigen receptor Tcell; E:T, effector:target; FACS, fluorescence-activated cell sorting; IFN- $\gamma$ , interferon gamma; IVIS, in vivo imaging system; ns, non-significant; NSG, non-obese diabetic-Cg-Prkdcscid Il2rgtm1Wjl/SzJ; PB, peripheral blood; PBMC, peripheral blood mononuclear cell.

We next compared the cytotoxic activity of 41BB-CD123 and CD28-CD123 CARTs *in vivo* using Luc-expressing CD123+ AML xenograft (figure 2G). NSG mice were transplanted with  $0.25 \times 10^6$  Luc-expressing AML PDX cells 5 days prior to intravenous infusion of  $3 \times 10^6$  41BB-CD123 or CD28-CD123 CARTs, and leukemia establishment was followed up weekly by BLI until disease signs were evident (figure 2H). While control mice increasingly showed aggressive disease and disseminated leukemia, CD123 CART-treated mice showed extensive disease control across the experiment, regardless of the costimulation domain used (figure 2H1). Of note, T-cells persisted in PB and BM at sacrifice, although at higher levels in 41BB-CD123 CART-treated mice, in line with the reported longer persistence/effector function of 41BB-costimulated CARTs (figure 2J).<sup>40</sup> Similarly, both CD123 CARTs, especially 41BB-costimulated CD123 CARTs produced high levels of the IFN- $\gamma$  *in vivo* (figure 2K). Collectively, both 41BB-CD123 and CD28-CD123 CARTs have similarly potent and specific antileukemic activity against AML cells *in vitro* and *in vivo*.

#### **On-target/off-tumor targeting of immature HSPCs and myeloid progenitors render both 41BB-CD123 and CD28-CD123 CARTs severely myeloablative *in vitro* and *in vivo***

There is controversy on whether CD123-redirected T-cells are myeloablative. To prospectively assess the potential myelotoxicity of CD123 CARTs, we first addressed *in vitro* whether exposure to CD123 CARTs hampers the viability and clonogenic capacity of CD34+ HSPCs (figure 3A). As compared with MOCK T-cells, both CD123 CARTs induced a massive reduction in CD34+ cell counts in a 72 hours (E:T ratio 2:1) assay (figure 3B). Similarly, CD34+ HSPCs pre-exposed to either CD123 CARTs (E:T ratio 1:1) for only 24 hours showed 50%–80% reduction in their clonogenic capacity (figure 3D).

We next assessed the myeloablative potential of both 41BB-CD123 and CD28-CD123 CARTs *in vivo* using xenograft models of human hematopoietic reconstitution. In an initial set of experiments, sublethally irradiated NSG mice were reconstituted with  $0.1 \times 10^6$  CD34+ HSPCs, and 6 weeks later, when human multilineage engraftment was established, mice received  $3 \times 10^6$  41BB-CD123, CD28-CD123 CARTs or MOCK T-cells (figure 3E). Human engraftment was biweekly analyzed in PB (figure 3F) and BM (figure 3G) over 6 weeks. MOCK T-cell-treated mice consistently showed increased myeloid (HLA-ABC +CD45+CD123+CD33+), B-lymphoid (HLA-ABC+CD45+CD123CD19+) and immature (HLA-ABC+CD45+CD34+) hematopoietic engraftment than that observed on the day of CART infusion. In contrast, both 41BB-CD123 and CD28-CD123 CART-treated mice showed an impaired multilineage engraftment in both PB and BM (figure 3F). However, in this xenograft model of existing hematopoiesis, CD28-based CD123 CARTs proved less myeloablative than 41BB-CD123 CARTs.

Next, we assessed the capacity of both CD123 CARTs in preventing *de novo* establishment of normal

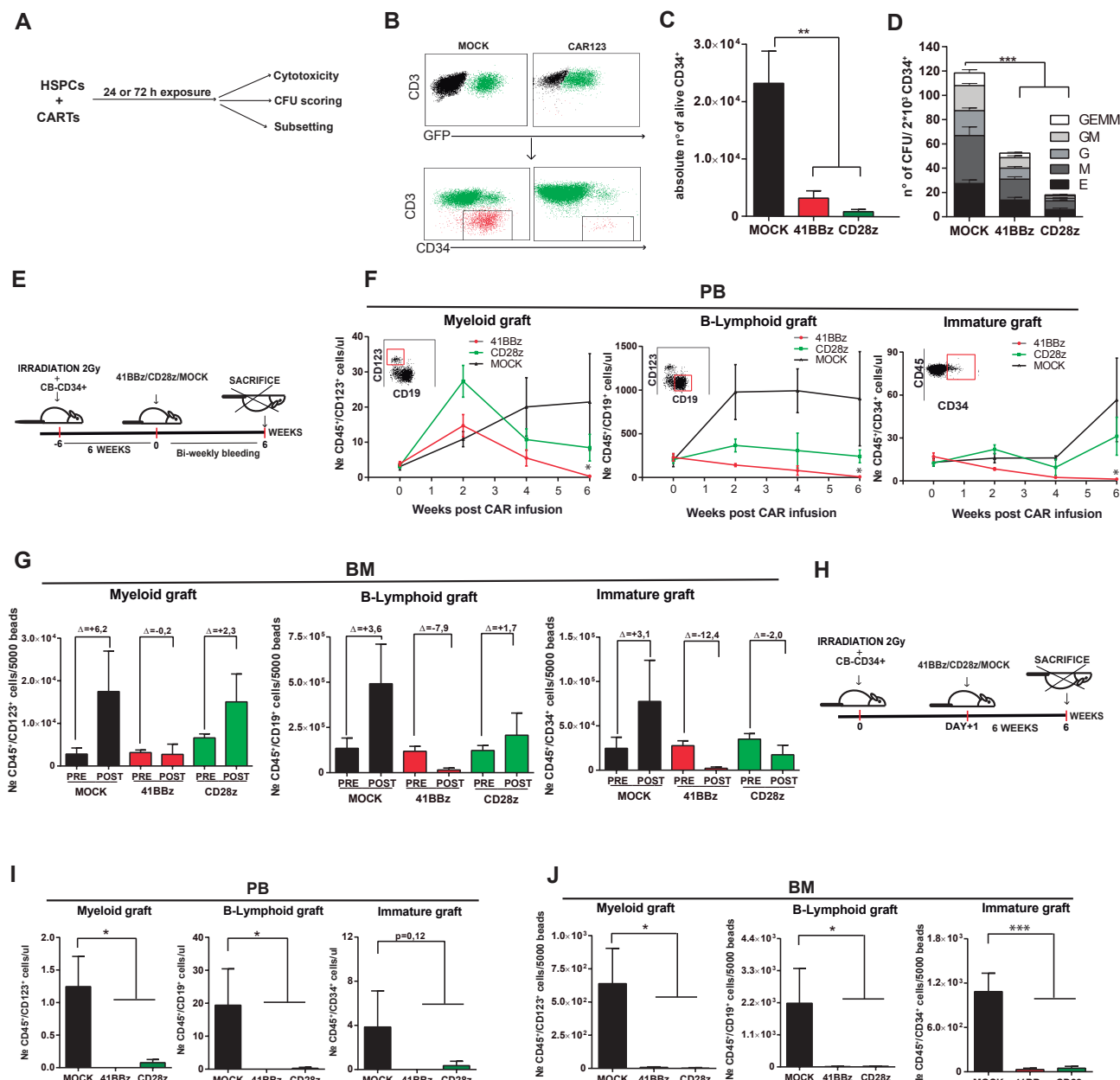
hematopoiesis by transplanting sublethally irradiated NSG mice with CD34+ HSPC and either 41BB-CD123, CD28-CD123 CARTs or MOCK T-cells 1 day after (figure 3H). Long-term multilineage human engraftment was found in both PB and BM in MOCK T-cell-treated mice; however, human hematopoiesis was barely reconstituted in both 41BB-CD123 and CD28-CD123 CART-treated mice (figure 3I), indicating that both 41BB-CD123 and CD28-CD123 CARTs prevent healthy hematopoietic reconstitution.

Finally, to further characterize the myeloablative effects of CD123 CARTs, we exposed total CD34+ HSPCs to either CD123 CARTs or MOCK T-cells for 48 hours at 1:1 E:T ratio, and quantified afterwards whether the myeloablative effects were CD34+ subset-specific (figures 3A, 4A). We found a significant loss of both immature/early HSPCs (CD34 ++CD133+CD90+) and myeloid progenitors (CD34 +CD13+CD71 low), while B-cell progenitors (CD34 +CD19+CD13-CD71-) and erythroid progenitors (CD34+CD71+CD13 low) were unaffected by CD123 CARTs exposure (figure 4A). Of note, CD123 CART-mediated cytotoxicity correlated well with the expression levels of CD123 in the different CD34+ subsets (figure 4C). Collectively, our results suggest that CD123 CARTs ablate human hematopoiesis by targeting both early/immature HSPCs and myeloid progenitors.

#### **DISCUSSION**

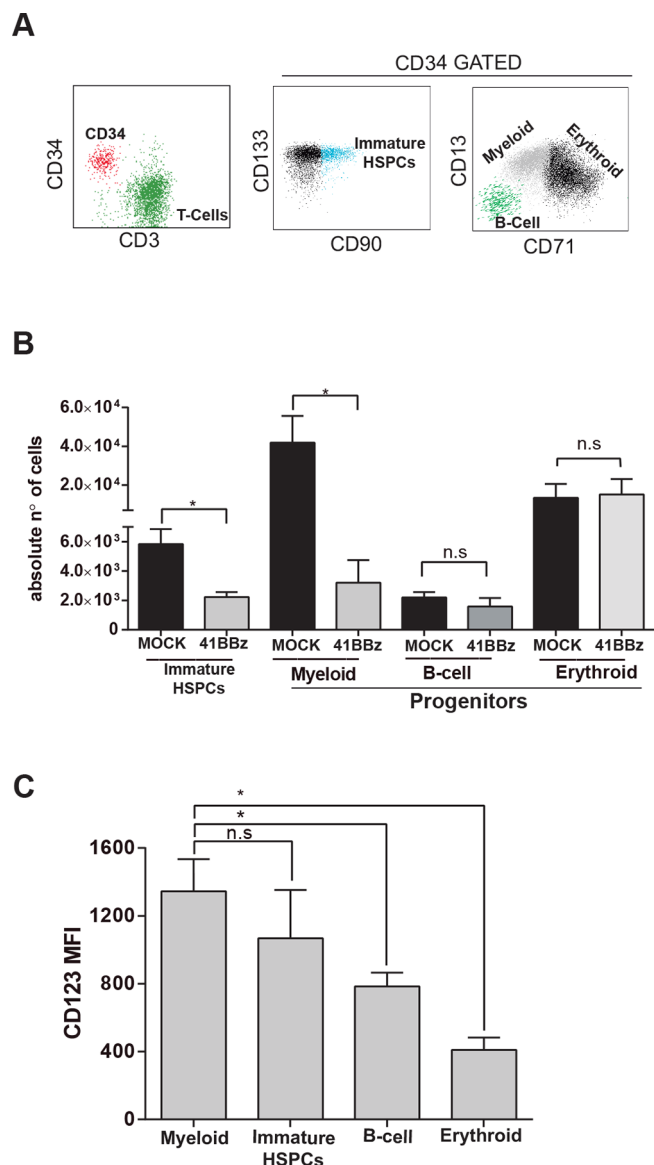
AML is a very heterogeneous stem cell malignant disease characterized by the progressive acquisition of (epi) genetic alterations resulting in a clonal rapid expansion of differentiation-defective HSPC in BM and PB.<sup>1</sup> Unfortunately, the prognosis of AML remains unfavorable, especially in patients >60 years old, due to common relapses, disease refractoriness and treatment-related toxicities.<sup>41</sup> Unfortunately, improved AML treatments have only experienced minor developments over the last four decades, reinforcing the high-demand for new therapeutics with improved efficacy and reduced toxicity.<sup>20 23</sup> In this context, the undisputable clinical improvements of cancer immunotherapy have not gone unnoticed in AML and undoubtedly represent the great hope of the next decade in the treatment of AML. In fact, immunotherapeutic targeting in AML is already well advanced in clinical trials using MoAb, antibody–drug conjugates, BiTEs, DARTs and CAR T-cell therapies against CD33 and CD123.<sup>13–16 20 22 29</sup> However, clinical progress and regulatory approval of such immunotherapies have been hampered by the challenge to find a specific and safe targetable surface antigen.<sup>41 42</sup>

CD33 and CD123 are the most extensively explored antigens for AML and blastic plasmacytoid dendritic cell neoplasm immunotherapy.<sup>42 43</sup> In this study, we aimed to better characterize the suitability of CD33 and CD123 in a large cohort of diagnostic and relapse AML primary samples. We show that CD123 represents a bona fide target for AML with a potentially safer profile than



**Figure 3** Both 41BB-CD123 and CD28-CD123 CARTs eliminate healthy CD34<sup>+</sup> HSPCs in vitro and in vivo. (A) Experimental scheme for in vitro assessment of CAR123 cytotoxicity on healthy CD34<sup>+</sup> cells. (B) Representative FACS showing the residual CD34<sup>+</sup> HSPCs (red) after exposure to CAR123 CARTs or MOCK T-cells for 72 hours at an E:T ratio of 2:1. (C) Absolute quantification of remaining alive CD34<sup>+</sup> cells after exposure to either 41BB-CD123 or CD28-CD123 CARTs (72 hours, E:T 2:1). (D) Clonogenic assays performed with residual alive CD34<sup>+</sup> HSPCs after 24 hours of cocubation with either 41BB-CD123 CARTs, CD28-CD123 CARTs or MOCK T-cells (E:T 1:1) (n=3 donors). (E) Schematic representation of the in vivo experimental plan. CD34<sup>+</sup> cells were intra-BM transplanted into NSG mice, and 6 weeks later, the level of human engraftment was assessed by FACS analysis in PB and BM. Mice then received  $3 \times 10^6$  of either CD123 CARTs (41BB or CD28) or MOCK T-cells. PB bleedings were performed biweekly and PB/BM were analyzed at sacrifice (6 weeks after CART infusion). (F,G) Analysis of murine PB (F) and BM (G) multilineage reconstitution (CD19<sup>+</sup> B lymphoid, CD123<sup>+</sup> myeloid and CD34<sup>+</sup> immature) at the indicated weeks post-CART infusion. Final engraftment (POST) of myeloid, B lymphoid and immature HSPCs is presented as fold change in comparison to pre-CART/MOCK infusion (PRE). (H) Schematic representation of the in vivo experimental plan. CD34<sup>+</sup> cells were intra-BM transplanted into NSG mice, followed the day after by infusion of either  $3 \times 10^6$  CD123 CARTs (41BB or CD28) or MOCK T-cells. Mice were sacrificed 6 weeks after and PB and BM were analyzed. (I,J) Analysis of murine PB (I) and BM (J) multilineage reconstitution (CD19<sup>+</sup> B lymphoid, CD123<sup>+</sup> myeloid and CD34<sup>+</sup> immature) 6 weeks after CART infusion. \*P<0.05, \*\*P<0.01, \*\*\*P<0.001. BM, bone marrow; CART, chimeric antigen receptor T-cell; E, erythroid colony-forming unit; E:T, effector:target; FACS, fluorescence-activated cell sorting; G, granulocytic colony-forming unit; GEMM, granulocytic, erythroid, myelomonocytic colony-forming unit; GM, granulomonocytic colony-forming unit; HSPC, hematopoietic stem/progenitor cell; M, monocytic colony-forming unit; NSG, non-obese diabetic-Cg-Prkdcscid Il2rgtm1Wjl/SzJ; PB, peripheral blood.





**Figure 4** CAR123-mediated cytotoxicity is CD34 subset specific. (A) Flow cytometry characterization of different subsets of CD34+ HSPCs post CD123 CART exposure. Left: identification of CD34+ HSPCs and CD123 CARTs. Middle right: identification of CD90+ CD133+ early-immature CD34+ HSPCs (turquoise dots), CD13–CD71–CD19+ B-lymphoid CD34+ HSPCs (green dots), CD13++CD71 dim myeloid CD34+ HSPCs (gray dots) and CD13lowCD71++ erythroid CD34+ HSPCs (black dots). (B) Absolute quantification by FACS of the different CD34+ subsets (as identified in A) on exposure to CD123 CARTs or MOCK T-cells (48 hours, E:T 1:1) (n=3). (C) MFI levels of CD123 in the different CD34+ cell subsets (n=3). \*P<0.05. CART, chimeric antigen receptor T-cell; FACS, fluorescence-activated cell sorting; MFI, mean fluorescence intensity.

CD33. Not only is the most common and homogeneously expressed antigen in AML, but also its expression is also fully retained at relapse and in AML-LSC. This lack of antigen plasticity, a phenomenon widely observed during the progression and relapse of acute leukemias,<sup>44</sup> further strengthens the potential of CD123 as immunotarget

for AML. More importantly, a target antigen for immunotherapy in AML should ideally spare HSPCs. Previous studies about the expression of CD123 in CD34+ HSPCs have provided conflicting results based on the source of CD34+ cells and the MoAb used.<sup>20 22 29</sup> Here, we demonstrate that CD123 is expressed in both CB-derived and PB-derived CD34+ HSPCs; however, in contrast to CD33, which discriminates more poorly AML from either CB-derived or PB-derived CD34+ HSPCs, two-thirds of patients with AML express CD123 at levels significantly higher than those in healthy CD34+ cells, suggesting CD123 as a safer target than CD33 for AML.

Extensive evidence supports CD123 targeting as a therapeutic approach for AML. First, major phenotypical (immature, granulocytic and monocytic) and cytogenetic (FLT3- and NPM1-mutated) AML subgroups express CD123.<sup>35 45 46</sup> Second, CD123+ AML cells are capable of initiating leukemogenesis when transplanted in immunodeficient mice, thus marking AML-LSC.<sup>47–49</sup> Third, the presence of CD34+ CD38 CD123+ cells in AML at presentation is associated with lower disease-free and overall survival and failure to achieve complete remission.<sup>50 51</sup> Fourth, CD123 expression enhances AML cell proliferation and induces downregulation of CXCR4, favoring the egress of BM AML-LSCs into the circulation.<sup>52</sup> Based on this background, we prompted to characterize and compare in vitro and in vivo the efficacy and safety profile of the second-generation 41BB-based and CD28-based CD123CARs derived from the clinically tested CSL362 humanized MoAb.<sup>14 53</sup> Regardless of the costimulation motif, CD123 CARTs were very efficient in vitro and in vivo in eliminating both AML cell lines and primary cells, even at relatively low E:T ratios. Importantly, however, CD123 CARTs ablated existing normal human hematopoiesis and prevented the establishment of de novo hematopoietic reconstitution by directly targeting both myeloid progenitors and early/immature HSPCs, with subsequent functional consequences in all downstream normal hematopoietic progenitors, rendering severe impairment of multilineage hematopoiesis in BM and PB. This study adds information to the existing controversy about the myeloablative potential of CD123 CARTs. Despite several reports showing a limited cytotoxic effect on CD34+ HSPCs,<sup>22 25 29</sup> our data support the work by Gill and coworkers who reported a myeloablative in vivo potential of 41BB-based CD123 CARTs on CD34+ HSPCs.

The myeloablative effects observed here were not limited to the 41BB-based CD123 CARTs but were similarly observed with the CD28-costimulated CD123CARs. Previous studies used different sources of CD34+ cells, different vector designs, and distinct CD123 scFvs. Therefore, current conflicting data may be attributed to distinct vector architectures, CAR-binding affinity, target density, source of healthy CD34+ cells, or even experimental designs.<sup>31</sup> The robust myeloablative effects reported in this study calls for caution when clinically implementing CD123 CARTs. Unfortunately, however, immunotherapies for AML different from CARTs, such as DARTs or

CD123-directed MoAbs, resulted in limited clinical efficacy unable to control the disease in the medium–long term.<sup>14,54,55</sup> A potentially safer clinical approach to circumvent myeloablation would be the use of potent CD123 CARTs to achieve CR followed by allo-HSCT as a rescue therapy. Finally, alternative sources of effector cells, such as natural killer (NK) cells, cytokine-induced killer (CIK) cells or V $\delta$ 1  $\gamma\delta$  T-cells (DOTs) are being explored in order to better control the in vivo persistence of CD123 CAR bearing cells.<sup>56,57</sup>

#### Author affiliations

- <sup>1</sup>Biomedicine, Research Institute Against Leukemia Josep Carreras, Barcelona, Catalunya, Spain
- <sup>2</sup>Hematology and Hemotherapy Department, Hospital Clinico Universitario San Carlos Instituto Cardiovascular, Madrid, Comunidad de Madrid, Spain
- <sup>3</sup>Hematology Department, Hospital Universitari Germans Trias i Pujol, Badalona, Catalunya, Spain
- <sup>4</sup>Hematology Department, Hospital de la Santa Creu i Sant Pau, Barcelona, Catalunya, Spain
- <sup>5</sup>Centre de Recherche Saint-Antoine, Armand-Trousseau Childrens Hospital, Paris, Île-de-France, France
- <sup>6</sup>Immunology Department, Erasmus Medical Center, Rotterdam, Zuid-Holland, Netherlands
- <sup>7</sup>Hematology Department, Hospital Clinic de Barcelona, Barcelona, Catalunya, Spain
- <sup>8</sup>Helmholtz Center, Munich German Research Center for Environmental Health, Neuherberg, Bayern, Germany
- <sup>9</sup>Pediatrics Department, Munich University Hospital Dr von Hauner Children's Hospital, Munchen, Bayern, Germany
- <sup>10</sup>Human Immunology Department, Centre for Cancer Biology, Adelaide, South Australia, Australia
- <sup>11</sup>Centro de investigación en Red-Oncología, CIBERONC, Comunidad de Madrid, Madrid, Spain
- <sup>12</sup>Institució Catalana de Recerca i Estudis Avançats, ICREA, Barcelona, Catalunya, Spain

**Correction notice** Since the online publication of this article, it was noticed that 'Samanta Romina Zanetti' was incorrectly spelled as 'Samanta Zanetti'. This error has been corrected.

**Acknowledgments** We deeply thank Marixtell Vinyoles and Paolo Petazzi for their technical support and Juan Jose Rodríguez-Sevilla for critically reviewing the manuscript.

**Authors' contribution:** MLB designed the experiments, analyzed/interpreted the data, and wrote the manuscript. DSM, FGA, HRH, MC, SZ, TVH, JC, and RDdG performed experiments. EA, SV, JN, HL, AEB, VHJvdV, JJ, PMA, AB, JE, AL, BV, IJ and MS provided clinical samples and biological data. CB designed the experiments, interpreted the data, and financially supported the work. PMe conceived the study, designed the experiments, wrote the manuscript, and financially supported the work.

**Funding** We thank CERCA/Generalitat de Catalunya and Fundació Josep Carreras-Obra Social la Caixa for their institutional support. PM acknowledges financial support from the European Research Council (CoG-2014–646903, PoC-2018–811220), the Spanish Ministry of Economy and Competitiveness (MINECO, SAF2016–80481-R), the Spanish Cancer Research Association (AECC-Semilla19), the Fundación Uno entre Cienmil, the Obra Social La Caixa (LCF/PR/HR19/52160011), the Leo Messi Foundation, the Banco Santander Foundation and the "Heroes hasta la médula" initiative. CB was supported by the AECC and the Health Institute Carlos III/FEDER (PI17/01028). MLB is supported by an FPI scholarship from MINECO. DSM is supported by a Sara Borrell fellowship from ISCIII. SZ and TVH are supported by Marie Skłodowska Curie Fellowships. PMA is an investigator of the Spanish Cell Therapy Network or TERCEL.

**Competing interests** None declared.

**Patient consent for publication** Not required.

**Ethics approval** This study was approved by the institutional review board, Barcelona Clinic Hospital Ethics Committee (HCB/2017/1056). All in vivo procedures

were approved by the Animal Care Committee of The Barcelona Biomedical Research Park (HRH-17-0029-P1).

**Provenance and peer review** Not commissioned; externally peer reviewed.

**Data availability statement** All data relevant to the study are included in the article and uploaded as supplementary information. The datasets and materials generated in this study are available from the corresponding author on reasonable request.

**Open access** This is an open access article distributed in accordance with the Creative Commons Attribution Non Commercial (CC BY-NC 4.0) license, which permits others to distribute, remix, adapt, build upon this work non-commercially, and license their derivative works on different terms, provided the original work is properly cited, appropriate credit is given, any changes made indicated, and the use is non-commercial. See <http://creativecommons.org/licenses/by-nc/4.0/>.

#### ORCID iDs

Samanta Romina Zanetti <http://orcid.org/0000-0002-9052-8751>  
Talia Velasco Hernandez <http://orcid.org/0000-0003-2183-7443>  
Alex Bataller <http://orcid.org/0000-0002-6085-2745>

#### REFERENCES

- 1 Bonnet D, Dick JE. Human acute myeloid leukemia is organized as a hierarchy that originates from a primitive hematopoietic cell. *Nat Med* 1997;3:730–7.
- 2 Li S, Mason CE, Melnick A. Genetic and epigenetic heterogeneity in acute myeloid leukemia. *Curr Opin Genet Dev* 2016;36:100–6.
- 3 Young AL, Challen GA, Birmann BM, et al. Clonal haematopoiesis harbouring AML-associated mutations is ubiquitous in healthy adults. *Nat Commun* 2016;7:12484.
- 4 Bowman RL, Busque L, Levine RL. Clonal hematopoiesis and evolution to hematopoietic malignancies. *Cell Stem Cell* 2018;22:157–70.
- 5 Robak T. Purine nucleoside analogues in the treatment of myeloid leukemias. *Leuk Lymphoma* 2003;44:391–409.
- 6 Cornelissen JJ, Blaise D. Hematopoietic stem cell transplantation for patients with AML in first complete remission. *Blood* 2016;127:62–70.
- 7 Thol F, Schlenk RF, Heuser M, et al. How I treat refractory and early relapsed acute myeloid leukemia. *Blood* 2015;126:319–27.
- 8 Bose P, Vachhani P, Cortes JE. Treatment of relapsed/refractory acute myeloid leukemia. *Curr Treat Options Oncol* 2017;18:17.
- 9 De Grandis M, Mancini SJ, Aurrand-Lions M. In quest for leukemia initiating cells in AML. *Oncoscience* 2018;5:9–10.
- 10 Guardia RD, dela, González-Silva L, López-Millán B, et al. Bone marrow clonogenic myeloid progenitors from NPM1-Mutated AML patients do not harbor the NPM1 mutation: implication for the Cell-Of-Origin of NPM1+ AML. *Genes* 2020;11:73.
- 11 Creutzig U, van den Heuvel-Eibrink MM, Gibson B, et al. Diagnosis and management of acute myeloid leukemia in children and adolescents: recommendations from an international expert panel. *Blood* 2012;120:3187–205.
- 12 Thein MS, Ershler WB, Jemal A, et al. Outcome of older patients with acute myeloid leukemia: an analysis of SEER data over 3 decades. *Cancer* 2013;119:2720–7.
- 13 Hills RK, Castaigne S, Appelbaum FR, et al. Addition of gemtuzumab ozogamicin to induction chemotherapy in adult patients with acute myeloid leukaemia: a meta-analysis of individual patient data from randomised controlled trials. *Lancet Oncol* 2014;15:986–96.
- 14 Lee EM, Yee D, Busfield SJ, et al. Efficacy of an Fc-modified anti-CD123 antibody (CSL362) combined with chemotherapy in xenograft models of acute myelogenous leukemia in immunodeficient mice. *Haematologica* 2015;100:914–26.
- 15 Jitschin R, Saul D, Braun M, et al. CD33/CD3-bispecific T-cell engaging (BiTE®) antibody construct targets monocytic AML myeloid-derived suppressor cells. *J Immunother Cancer* 2018;6:116.
- 16 Al-Hussaini M, Rettig MP, Ritchey JK, et al. Targeting CD123 in acute myeloid leukemia using a T-cell-directed dual-affinity retargeting platform. *Blood* 2016;127:122–31.
- 17 Brentjens RJ, Riviere I, Park JH, et al. Safety and persistence of adoptively transferred autologous CD19-targeted T cells in patients with relapsed or chemotherapy refractory B-cell leukemias. *Blood* 2011;118:4817–28.
- 18 Lee DW, Kochenderfer JN, Stetler-Stevenson M, et al. T cells expressing CD19 chimeric antigen receptors for acute lymphoblastic leukaemia in children and young adults: a phase 1 dose-escalation trial. *Lancet* 2015;385:517–28.

- 19 Kochenderfer JN, Wilson WH, Janik JE, *et al.* Eradication of B-lineage cells and regression of lymphoma in a patient treated with autologous T cells genetically engineered to recognize CD19. *Blood* 2010;116:4099–102.
- 20 Gill S, Tasian SK, Ruella M, *et al.* Preclinical targeting of human acute myeloid leukemia and myeloablation using chimeric antigen receptor-modified T cells. *Blood* 2014;123:2343–54.
- 21 Jetani H, Garcia-Cadenas I, Nerretter T, *et al.* Car T cells targeting FLT3 on AML confer potent anti-leukemic activity and act synergistically with the FLT3 inhibitor midostaurin. *Blood* 2017;130:1351.
- 22 Pizzitola I, Anjos-Afonso F, Rouault-Pierre K, *et al.* Chimeric antigen receptors against CD33/CD123 antigens efficiently target primary acute myeloid leukemia cells in vivo. *Leukemia* 2014;28:1596–605.
- 23 Tasian SK, Kenderian SS, Shen F, *et al.* Optimized depletion of chimeric antigen receptor T cells in murine xenograft models of human acute myeloid leukemia. *Blood* 2017;129:2395–407.
- 24 Kenderian SS, Ruella M, Shestova O, *et al.* CD33-specific chimeric antigen receptor T cells exhibit potent preclinical activity against human acute myeloid leukemia. *Leukemia* 2015;29:1637–47.
- 25 Tettamanti S, Marin V, Pizzitola I, *et al.* Targeting of acute myeloid leukaemia by cytokine-induced killer cells redirected with a novel CD123-specific chimeric antigen receptor. *Br J Haematol* 2013;161:389–401.
- 26 Kim MY, Yu K-R, Kenderian SS, *et al.* Genetic inactivation of CD33 in hematopoietic stem cells to enable CAR T cell immunotherapy for acute myeloid leukemia. *Cell* 2018;173:1439–53.
- 27 Stevens BM, Zhang W, Pollyea DA, *et al.* Cd123 CAR T cells for the treatment of myelodysplastic syndrome. *Exp Hematol* 2019;74:52–63.
- 28 Luo Y, Chang L-J, Hu Y, *et al.* First-In-Man CD123-Specific chimeric antigen receptor-modified T cells for the treatment of refractory acute myeloid leukemia. *Blood* 2015;126:3778.
- 29 Mardiros A, Dos Santos C, McDonald T, *et al.* T cells expressing CD123-specific chimeric antigen receptors exhibit specific cytolytic effector functions and antitumor effects against human acute myeloid leukemia. *Blood* 2013;122:3138–48.
- 30 Budde L, Song JY, Kim Y, *et al.* Remissions of acute myeloid leukemia and blastic plasmacytoid dendritic cell neoplasm following treatment with CD123-Specific CAR T cells: a first-in-human clinical trial. *Blood* 2017;130:811.
- 31 Bôle-Richard E, Fredon M, Biichlé S, *et al.* CD28/4-1BB CD123 CAR T cells in blastic plasmacytoid dendritic cell neoplasm. *Leukemia* 2020. doi:10.1038/s41375-020-0777-1. [Epub ahead of print: 28 Feb 2020].
- 32 Sánchez-Martínez D, Baroni ML, Gutierrez-Agüera F, *et al.* Fratricide-resistant CD1a-specific CAR T cells for the treatment of cortical T-cell acute lymphoblastic leukemia. *Blood* 2019;133:2291–304.
- 33 Gomes-Silva D, Srinivasan M, Sharma S, *et al.* CD7-edited T cells expressing a CD7-specific CAR for the therapy of T-cell malignancies. *Blood* 2017;130:285–96.
- 34 Mamonkin M, Rouce RH, Tashiro H, *et al.* A T-cell-directed chimeric antigen receptor for the selective treatment of T-cell malignancies. *Blood* 2015;126:983–92.
- 35 Bras AE, de Haas V, van Stigt A, *et al.* Cd123 expression levels in 846 acute leukemia patients based on standardized immunophenotyping. *Cytometry B Clin Cytom* 2019;96:134–42.
- 36 Bueno C, Roldan M, Anguita E, *et al.* Bone marrow mesenchymal stem cells from patients with aplastic anemia maintain functional and immune properties and do not contribute to the pathogenesis of the disease. *Haematologica* 2014;99:1168–75.
- 37 Menendez P, Catalina P, Rodriguez R, *et al.* Bone marrow mesenchymal stem cells from infants with MLL-AF4+ acute leukemia harbor and express the MLL-AF4 fusion gene. *J Exp Med* 2009;206:3131–41.
- 38 Rodriguez R, Tornin J, Suarez C, *et al.* Expression of FUS-CHOP fusion protein in immortalized/transformed human mesenchymal stem cells drives mixoid liposarcoma formation. *Stem Cells* 2013;31:2061–72.
- 39 Ebinger S, Zeller C, Carlet M, *et al.* Plasticity in growth behavior of patients' acute myeloid leukemia stem cells growing in mice. *Haematologica* 2020. doi:10.3324/haematol.2019.226282. [Epub ahead of print: 06 Feb 2020].
- 40 Guedan S, Posey AD, Shaw C, *et al.* Enhancing CAR T cell persistence through ICOS and 4-1BB costimulation. *JCI Insight* 2018;3.
- 41 Ossenkoppele G, Löwenberg B. How I treat the older patient with acute myeloid leukemia. *Blood* 2015;125:767–74.
- 42 Tasian SK. Acute myeloid leukemia chimeric antigen receptor T-cell immunotherapy: how far up the road have we traveled? *Ther Adv Hematol* 2018;9:135–48.
- 43 Ugo Testa, Elvira Pelosi, Germana Castelli. Cd123 as a therapeutic target in the treatment of hematological malignancies. *Cancers* 2019;11:1358.
- 44 Dorantes-Acosta E, Pelayo R. Lineage switching in acute leukemias: a consequence of stem cell plasticity? *Bone Marrow Res* 2012;2012:1–18.
- 45 Testa U, Riccioni R, Diverio D, *et al.* Interleukin-3 receptor in acute leukemia. *Leukemia* 2004;18:219–26.
- 46 Riccioni R, Diverio D, Riti V, *et al.* Interleukin (IL)-3/granulocyte macrophage-colony stimulating factor/IL-5 receptor alpha and beta chains are preferentially expressed in acute myeloid leukaemias with mutated FMS-related tyrosine kinase 3 receptor. *Br J Haematol* 2009;144:376–87.
- 47 Al-Mawali A, Gillis D, Lewis I. Immunoprofiling of leukemic stem cells CD34+/CD38-/CD123+ delineate FLT3/ITD-positive clones. *J Hematol Oncol* 2016;9:61.
- 48 Angelini DF, Ottone T, Guerrera G, *et al.* A leukemia-associated CD34/CD123/CD25/CD99+ immunophenotype identifies FLT3-Mutated clones in acute myeloid leukemia. *Clin Cancer Res* 2015;21:3977–85.
- 49 Guzman ML, Neering SJ, Upchurch D, *et al.* Nuclear factor-kappaB is constitutively activated in primitive human acute myelogenous leukemia cells. *Blood* 2001;98:2301–7.
- 50 Zahran AM, Aly SS, Rayan A, *et al.* Survival outcomes of CD34+CD38-LSCs and their expression of CD123 in adult AML patients. *Oncotarget* 2018;9:34056–65.
- 51 Arai NH M, Abe M, Baba Y, *et al.* *Int J Hematol* 2019.
- 52 Wittwer NL, Brumatti G, Marchant C, *et al.* High CD123 levels enhance proliferation in response to IL-3, but reduce chemotaxis by downregulating CXCR4 expression. *Blood Adv* 2017;1:1067–79.
- 53 Nievergall E, Ramshaw HS, Yong ASM, *et al.* Monoclonal antibody targeting of IL-3 receptor  $\alpha$  with CSL362 effectively depletes CML progenitor and stem cells. *Blood* 2014;123:1218–28.
- 54 He SZ, Busfield S, Ritchie DS, *et al.* A phase 1 study of the safety, pharmacokinetics and anti-leukemic activity of the anti-CD123 monoclonal antibody CSL360 in relapsed, refractory or high-risk acute myeloid leukemia. *Leuk Lymphoma* 2015;56:1406–15.
- 55 Barrett AJ. Antibody darts on target for acute myelogenous leukemia. *Ann Transl Med* 2017;5:80.
- 56 Correia DV, Fogli M, Hudspeth K, *et al.* Differentiation of human peripheral blood  $\delta 1 +$  T cells expressing the natural cytotoxicity receptor NKp30 for recognition of lymphoid leukemia cells. *Blood* 2011;118:992–1001.
- 57 Rotolo R, Leuci V, Donini C, *et al.* CAR-Based strategies beyond T lymphocytes: integrative opportunities for cancer adoptive immunotherapy. *Int J Mol Sci* 2019;20. doi:10.3390/ijms20112839. [Epub ahead of print: 11 Jun 2019].