

A Rare Soft-Tissue Tumor in a 15-Year-Old Boy With Tuberosus Sclerosis Complex: Challenge

Lindsey Oudijk, MD, PhD,* Elodie J. Mendels, MD,† and Jeffrey Damman, MD, PhD*

(*Am J Dermatopathol* 2020;42:e66–e67)

CASE REPORT

A 15-year-old boy known with tuberous sclerosis complex with a *TSC2* mutation and clinical features of hypopigmented macules, facial angiofibromas, mental retardation, epilepsy, angiomyolipoma, and cardiac rhabdomyoma presented at our pediatric dermatology clinics. He had a gradually increasing large soft multinodular tumor in the neck (Fig. 1), which had been present for 5 months. At times, the lesion was painful, and the patient noticed purulent discharge. The tumor measured 5.3 × 3.5 cm and showed an irregular surface with comedo-like/cystic openings. The patient requested removal of the tumor for cosmetic reasons.

On gross pathology, the specimen showed a diffuse, pale fibrotic appearance, with fibrosis extending into the subcutaneous fat (Fig. 2A). Histopathologic examination of the lesion revealed 3 components: abundant thick collagen bundles in the dermis and underlying adipose tissue; concentric perifollicular, perieccrine, and perivascular fibrosis; and variable-sized epithelial cysts and dilated openings (Figs. 2B–D).

WHAT IS YOUR DIAGNOSIS?

(Continued on page 460)



FIGURE 1. Exophytic multinodular tumor in the neck with an irregular surface and comedo-like openings.

From the Departments of *Pathology, and †Pediatric Dermatology, Erasmus MC, University Medical Center, Rotterdam, the Netherlands.

The authors declare no conflicts of interest.

Correspondence: L. Oudijk, Department of Pathology, Erasmus University Medical Center Rotterdam, Doctor Molewaterplein 40, 3015 GD Rotterdam, the Netherlands (e-mail: l.oudijk@erasmusmc.nl).

Copyright © 2019 Wolters Kluwer Health, Inc. All rights reserved.

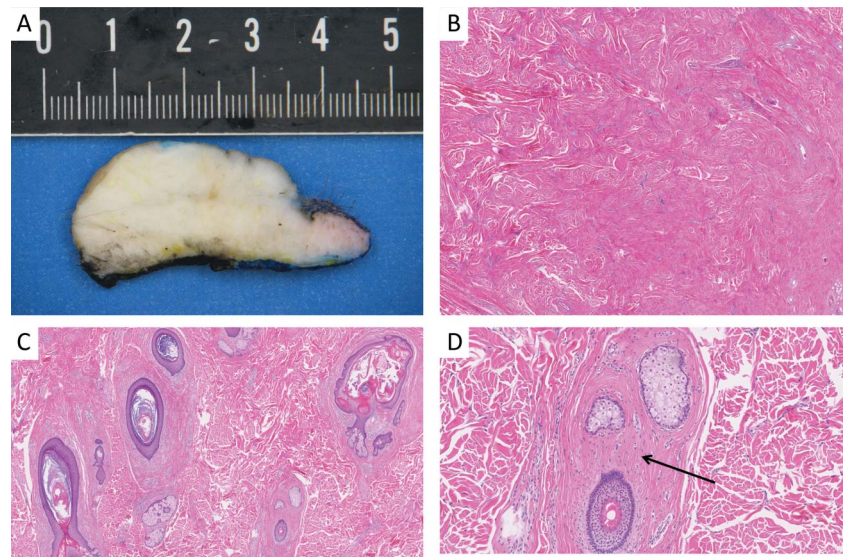


FIGURE 2. Gross pathology shows a diffuse, pale fibrotic rubbery appearance (A). Histopathology reveals abundant thick haphazardly arranged collagen bundles in the dermis and subcutis (B), concentric variable-sized epithelial cysts/dilatation of hair follicles (C), and profound perifollicular fibrosis (D, arrow).